

Data Path : Z:\HPCHEM1\BNA F\DATA\BF021315\  
 Data File : BF077306.D  
 Acq On : 13 Feb 2015 13:59  
 Operator : TP/IZ  
 Sample : G1258-03  
 Misc :  
 ALS Vial : 3 Sample Multiplier: 1

Instrument :  
 BNA\_F  
 ClientSampleId :  
 FB

Integration Parameters: rteint.p  
 Integrator: RTE  
 Smoothing : ON Filtering: 5  
 Sampling : 1 Min Area: 3 % of largest Peak  
 Start Thrs: 0.2 Max Peaks: 100  
 Stop Thrs : 0 Peak Location: TOP

If leading or trailing edge < 100 prefer < Baseline drop else tangent >  
 Peak separation: 5

Method : Z:\HPCHEM1\BNA F\METHODS\8270-BF021215.M  
 Title : ASP BNA STANDARDS FOR 5 POINT CALIBRATION

Signal : TIC

| peak # | R.T. min | first scan | max scan | last scan | PK TY | peak height | corr. area | corr. % max. | % of total |
|--------|----------|------------|----------|-----------|-------|-------------|------------|--------------|------------|
| 1      | 1.275    | 32         | 34       | 38        | rBV   | 11662       | 20958      | 1.70%        | 0.310%     |
| 2      | 1.333    | 38         | 39       | 51        | rVB   | 134663      | 247362     | 20.09%       | 3.659%     |
| 3      | 3.493    | 225        | 228      | 239       | rBV   | 20109       | 60252      | 4.89%        | 0.891%     |
| 4      | 4.499    | 313        | 316      | 326       | rBV   | 104574      | 270701     | 21.98%       | 4.005%     |
| 5      | 6.945    | 527        | 530      | 531       | rBV   | 51407       | 93814      | 7.62%        | 1.388%     |
| 6      | 6.990    | 531        | 534      | 545       | rVB   | 364533      | 739007     | 60.01%       | 10.933%    |
| 7      | 7.505    | 576        | 579      | 588       | rBB   | 61698       | 122576     | 9.95%        | 1.813%     |
| 8      | 7.813    | 603        | 606      | 616       | rBV   | 388060      | 648673     | 52.68%       | 9.596%     |
| 9      | 8.808    | 690        | 693      | 705       | rBV   | 305733      | 505723     | 41.07%       | 7.482%     |
| 10     | 10.408   | 830        | 833      | 846       | rBB   | 93594       | 171440     | 13.92%       | 2.536%     |
| 11     | 13.059   | 1062       | 1065     | 1076      | rBB   | 639743      | 1045244    | 84.88%       | 15.463%    |
| 12     | 13.494   | 1101       | 1103     | 1108      | rBB   | 18848       | 29931      | 2.43%        | 0.443%     |
| 13     | 14.522   | 1190       | 1193     | 1199      | rBB   | 112721      | 188713     | 15.33%       | 2.792%     |
| 14     | 14.785   | 1213       | 1216     | 1220      | rBB   | 14196       | 22791      | 1.85%        | 0.337%     |
| 15     | 14.900   | 1223       | 1226     | 1229      | rBB   | 7358        | 13036      | 1.06%        | 0.193%     |
| 16     | 16.077   | 1326       | 1329     | 1333      | rBB   | 110976      | 170107     | 13.81%       | 2.517%     |
| 17     | 16.294   | 1345       | 1348     | 1358      | rBB   | 392786      | 543270     | 44.12%       | 8.037%     |
| 18     | 17.437   | 1445       | 1448     | 1455      | rBB   | 148655      | 201924     | 16.40%       | 2.987%     |
| 19     | 17.643   | 1464       | 1466     | 1468      | rBB   | 9583        | 13099      | 1.06%        | 0.194%     |
| 20     | 19.392   | 1618       | 1619     | 1626      | rBB   | 11974       | 18247      | 1.48%        | 0.270%     |
| 21     | 19.700   | 1643       | 1646     | 1648      | rBV   | 886375      | 1231385    | 100.00%      | 18.217%    |
| 22     | 20.969   | 1754       | 1757     | 1761      | rBV   | 155172      | 207053     | 16.81%       | 3.063%     |
| 23     | 22.740   | 1910       | 1912     | 1924      | rVB   | 123809      | 194239     | 15.77%       | 2.874%     |

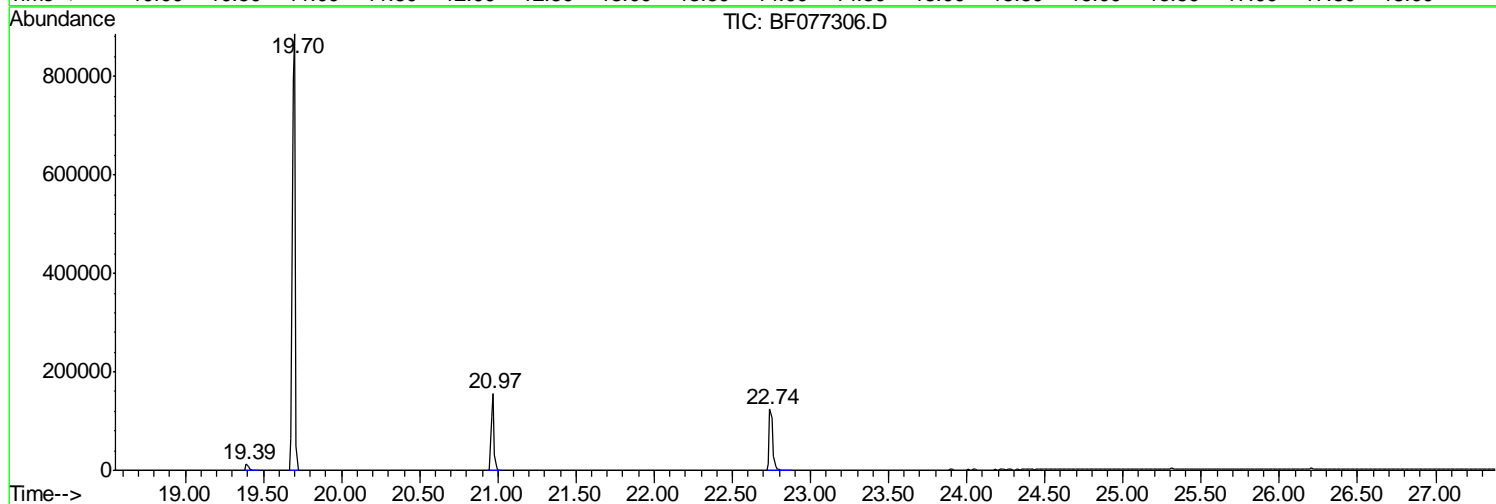
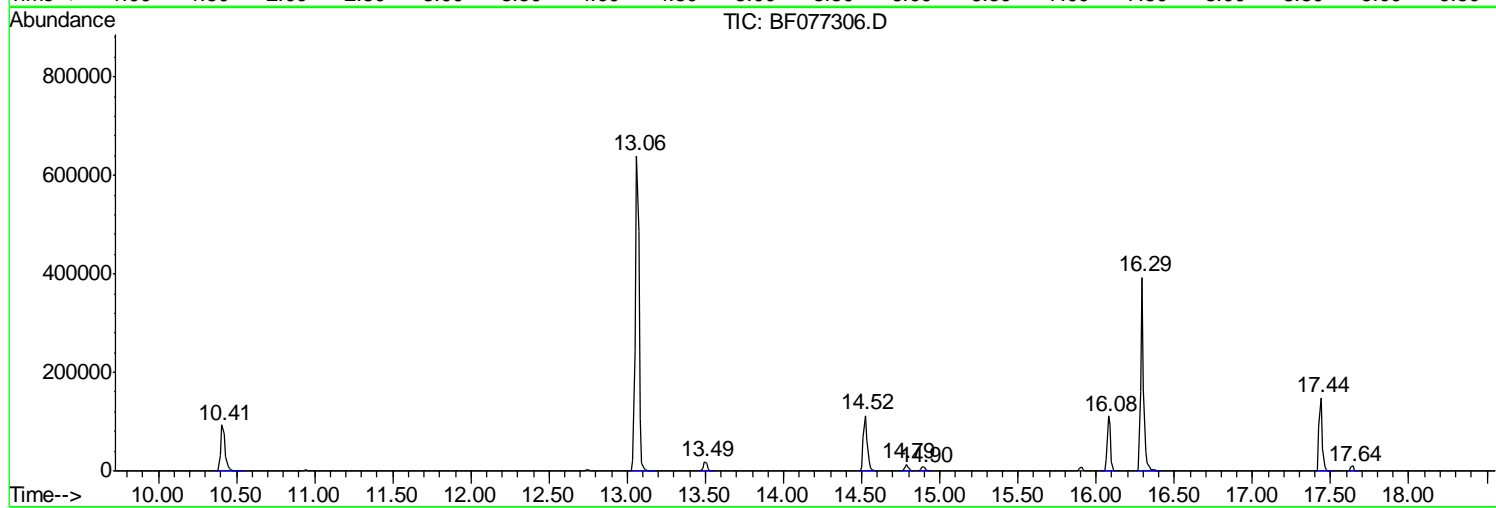
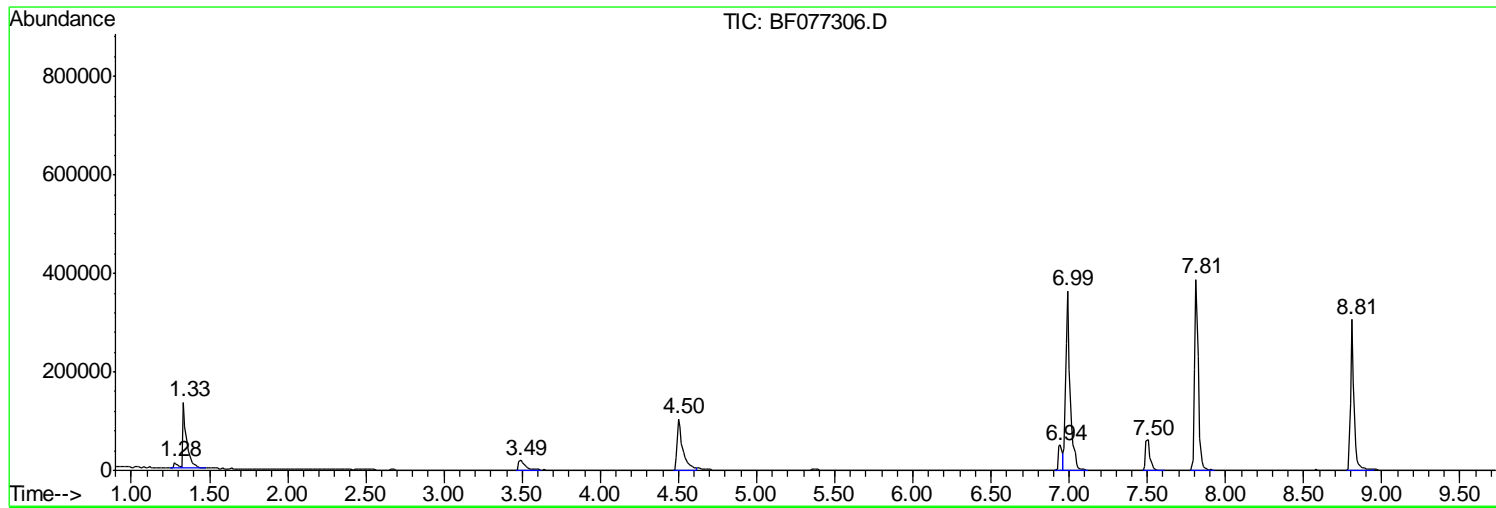
Sum of corrected areas: 6759545

Data Path : Z:\HPCHEM1\BNA F\DATA\BF021315\  
Data File : BF077306.D  
Acq On : 13 Feb 2015 13:59  
Operator : TP/IZ  
Sample : G1258-03  
Misc :  
ALS Vial : 3 Sample Multiplier: 1

Instrument :  
BNA\_F  
ClientSampled :  
FB

Quant Method : Z:\HPCHEM1\BNA F\METHODS\8270-BF021215.M  
Quant Title : ASP BNA STANDARDS FOR 5 POINT CALIBRATION

TIC Library : C:\DATABASE\NIST02.L  
TIC Integration Parameters: LSCINT.P



Data Path : Z:\HPCHEM1\BNA F\DATA\BF021315\  
 Data File : BF077306.D  
 Acq On : 13 Feb 2015 13:59  
 Operator : TP/IZ  
 Sample : G1258-03  
 Misc :  
 ALS Vial : 3 Sample Multiplier: 1

Instrument :  
 BNA\_F  
 ClientSampleId :  
 FB

Quant Method : Z:\HPCHEM1\BNA F\METHODS\8270-BF021215.M  
 Quant Title : ASP BNA STANDARDS FOR 5 POINT CALIBRATION

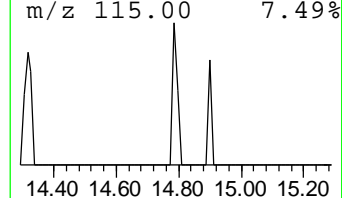
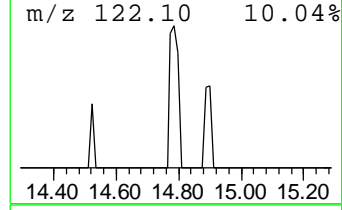
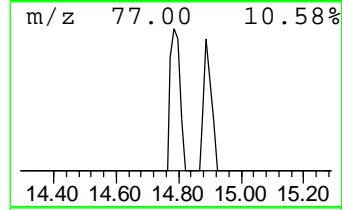
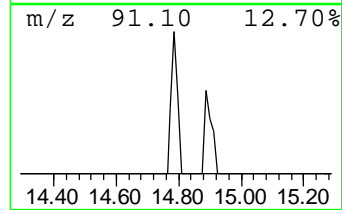
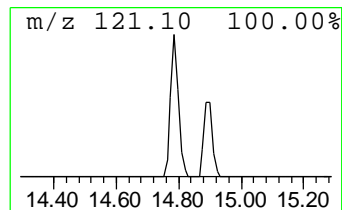
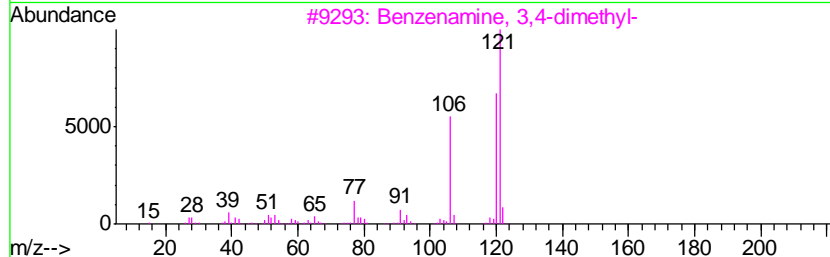
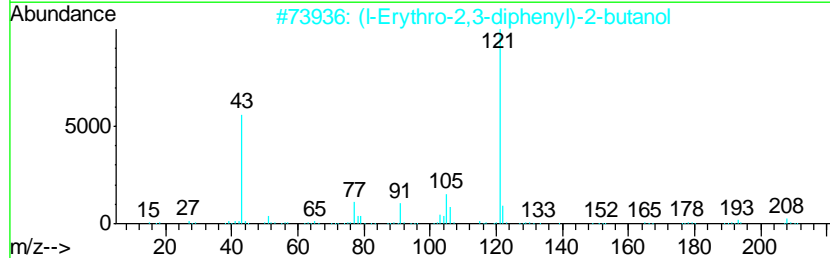
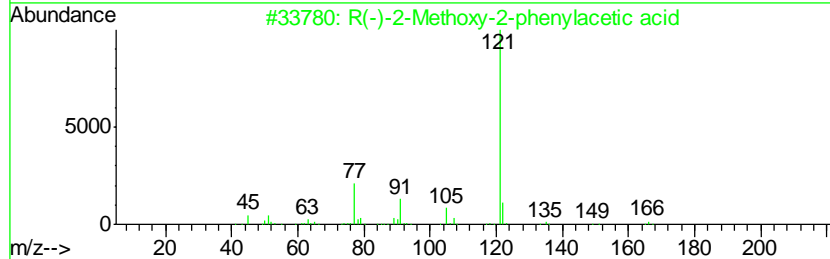
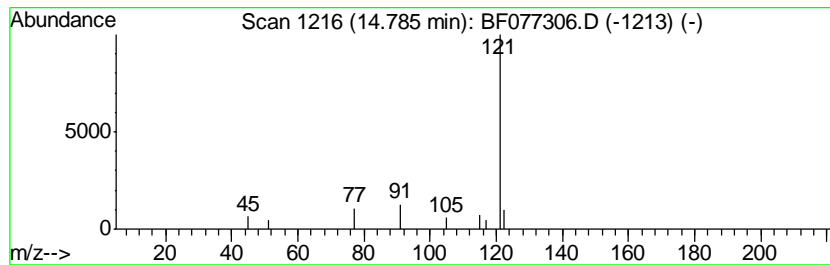
TIC Library : C:\DATABASE\NIST02.L  
 TIC Integration Parameters: LSCINT.P

\*\*\*\*\*  
 Peak Number 6 R(-)-2-Methoxy-2-phenylacet... Concentration Rank 7

| R.T.  | EstConc | Area  | Relative to ISTD | R.T.  |
|-------|---------|-------|------------------|-------|
| 14.79 | 2.42 ng | 22791 | Acenaphthene-d10 | 14.52 |

| Hit# | of | Tentative ID                       | MW  | MolForm | CAS#         | Qual |
|------|----|------------------------------------|-----|---------|--------------|------|
| 1    | 5  | R(-)-2-Methoxy-2-phenylacetic acid | 166 | C9H10O3 | 1000132-09-7 | 64   |
| 2    |    | (1-Erythro-2,3-diphenyl)-2-butanol | 226 | C16H18O | 004613-10-9  | 43   |
| 3    |    | Benzenamine, 3,4-dimethyl-         | 121 | C8H11N  | 000095-64-7  | 9    |
| 4    |    | Benzenamine, 3,5-dimethyl-         | 121 | C8H11N  | 000108-69-0  | 9    |
| 5    |    | Benzenamine, 2,4-dimethyl-         | 121 | C8H11N  | 000095-68-1  | 9    |



Data Path : Z:\HPCHEM1\BNA F\DATA\BF021315\  
 Data File : BF077306.D  
 Acq On : 13 Feb 2015 13:59  
 Operator : TP/IZ  
 Sample : G1258-03  
 Misc :  
 ALS Vial : 3 Sample Multiplier: 1

Instrument :  
 BNA\_F  
 ClientSampled :  
 FB

Quant Method : Z:\HPCHEM1\BNA F\METHODS\8270-BF021215.M  
 Quant Title : ASP BNA STANDARDS FOR 5 POINT CALIBRATION

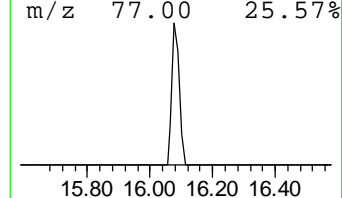
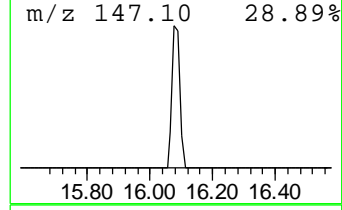
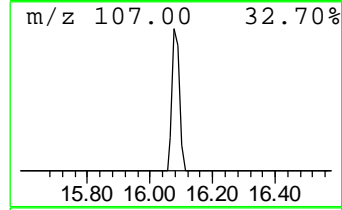
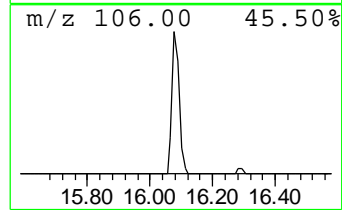
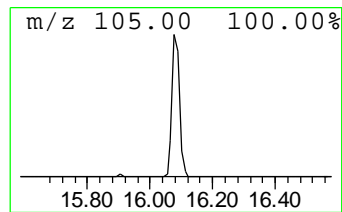
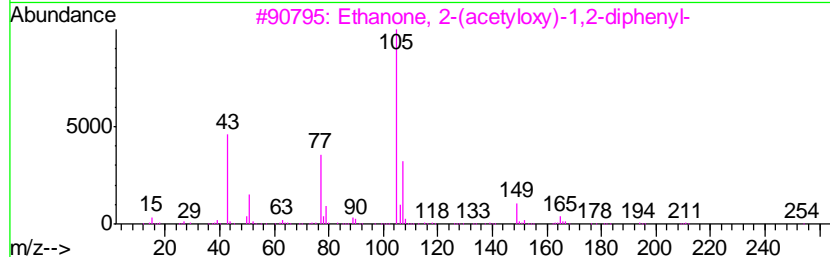
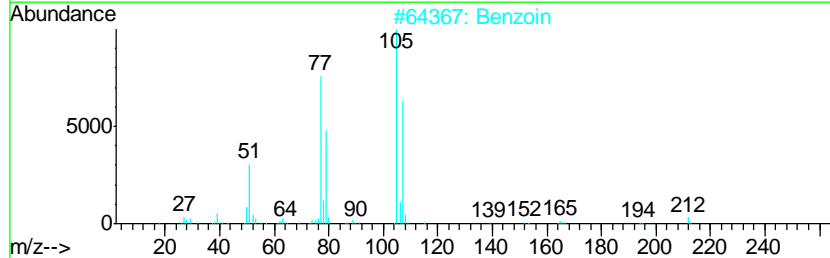
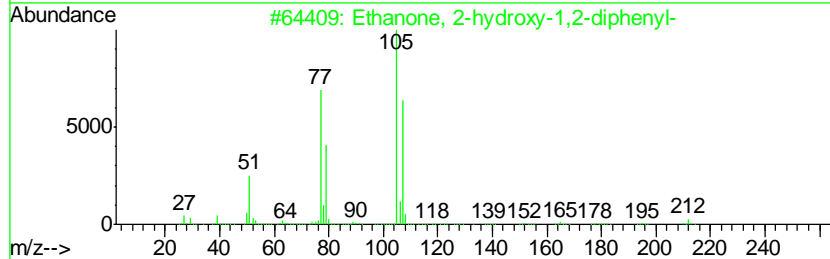
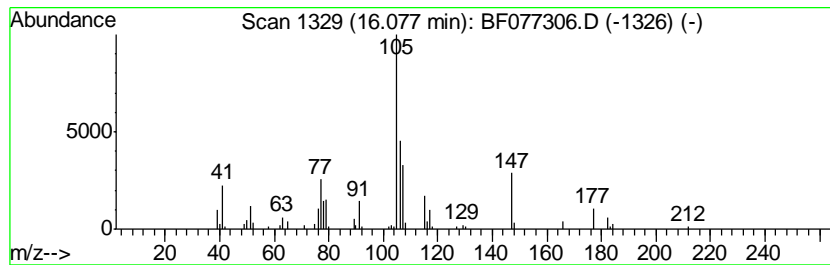
TIC Library : C:\DATABASE\NIST02.L  
 TIC Integration Parameters: LSCINT.P

\*\*\*\*\*  
 Peak Number 7 unknown16.08 Concentration Rank 3

| R.T.  | EstConc  | Area   | Relative to ISTD | R.T.  |
|-------|----------|--------|------------------|-------|
| 16.08 | 16.85 ng | 170107 | Phenanthrene-d10 | 17.44 |

| Hit# | of | Tentative ID                        | MW  | MolForm    | CAS#        | Qual |
|------|----|-------------------------------------|-----|------------|-------------|------|
| 1    | 5  | Ethanone, 2-hydroxy-1,2-diphenyl-   | 212 | C14H12O2   | 000119-53-9 | 30   |
| 2    |    | Benzoin                             | 212 | C14H12O2   | 000579-44-2 | 30   |
| 3    |    | Ethanone, 2-(acetyloxy)-1,2-diph... | 254 | C16H14O3   | 000574-06-1 | 27   |
| 4    |    | Benzamide, N-butyl-                 | 177 | C11H15NO   | 002782-40-3 | 22   |
| 5    |    | 2-(Benzylidenehydrazino)-2-oxo-N... | 295 | C17H17N3O2 | 098308-85-1 | 16   |



Data Path : Z:\HPCHEM1\BNA\_F\DATA\BF021315\  
Data File : BF077306.D  
Acq On : 13 Feb 2015 13:59  
Operator : TP/IZ  
Sample : G1258-03  
Misc :  
ALS Vial : 3 Sample Multiplier: 1

Instrument :  
BNA\_F  
ClientSampleId :  
FB

Quant Method : Z:\HPCHEM1\BNA\_F\METHODS\8270-BF021215.M  
Quant Title : ASP BNA STANDARDS FOR 5 POINT CALIBRATION

TIC Library : C:\DATABASE\NIST02.L  
TIC Integration Parameters: LSCINT.P

| TIC Top Hit name     | RT    | EstConc | Units | Response | --Internal Standard-- |       |        |      |
|----------------------|-------|---------|-------|----------|-----------------------|-------|--------|------|
|                      |       |         |       |          | #                     | RT    | Resp   | Conc |
| R(-)-2-Methoxy-2-... | 14.79 | 2.4     | ng    | 22791    | 3                     | 14.52 | 188713 | 20.0 |
| unknown16.08         | 16.08 | 16.9    | ng    | 170107   | 4                     | 17.44 | 201924 | 20.0 |