

Data Path : Z:\svoasrv\HPCHEM1\BNA\_F\Data\BF021325\  
 Data File : BF141608.D  
 Acq On : 13 Feb 2025 12:24  
 Operator : RC/JU  
 Sample : Q1237-03  
 Misc :  
 ALS Vial : 7 Sample Multiplier: 1

Instrument :  
 BNA\_F  
 ClientSampleId :  
 HL2PX3

Quant Time: Feb 13 12:54:24 2025  
 Quant Method : Z:\svoasrv\HPCHEM1\BNA\_F\Methods\8270-BF020625.M  
 Quant Title : ASP BNA STANDARDS FOR 5 POINT CALIBRATION  
 QLast Update : Thu Feb 06 16:58:59 2025  
 Response via : Initial Calibration

Compound	R.T.	QIon	Response	Conc	Units	Dev(Min)
Internal Standards						
1) 1,4-Dichlorobenzene-d4	6.787	152	97501	20.000	ng	0.00
21) Naphthalene-d8	8.063	136	397436	20.000	ng	-0.01
39) Acenaphthene-d10	9.822	164	223685	20.000	ng	-0.01
64) Phenanthrene-d10	11.304	188	371884	20.000	ng	-0.01
76) Chrysene-d12	13.951	240	250100	20.000	ng	-0.01
86) Perylene-d12	15.410	264	205278	20.000	ng	0.00
System Monitoring Compounds						
5) 2-Fluorophenol	5.410	112	591179	95.057	ng	0.00
7) Phenol-d6	6.422	99	735929	93.623	ng	-0.02
23) Nitrobenzene-d5	7.345	82	492796	64.673	ng	-0.02
42) 2,4,6-Tribromophenol	10.610	330	205410	91.415	ng	-0.02
45) 2-Fluorobiphenyl	9.139	172	907766	62.523	ng	-0.01
79) Terphenyl-d14	12.898	244	915157	61.773	ng	0.00

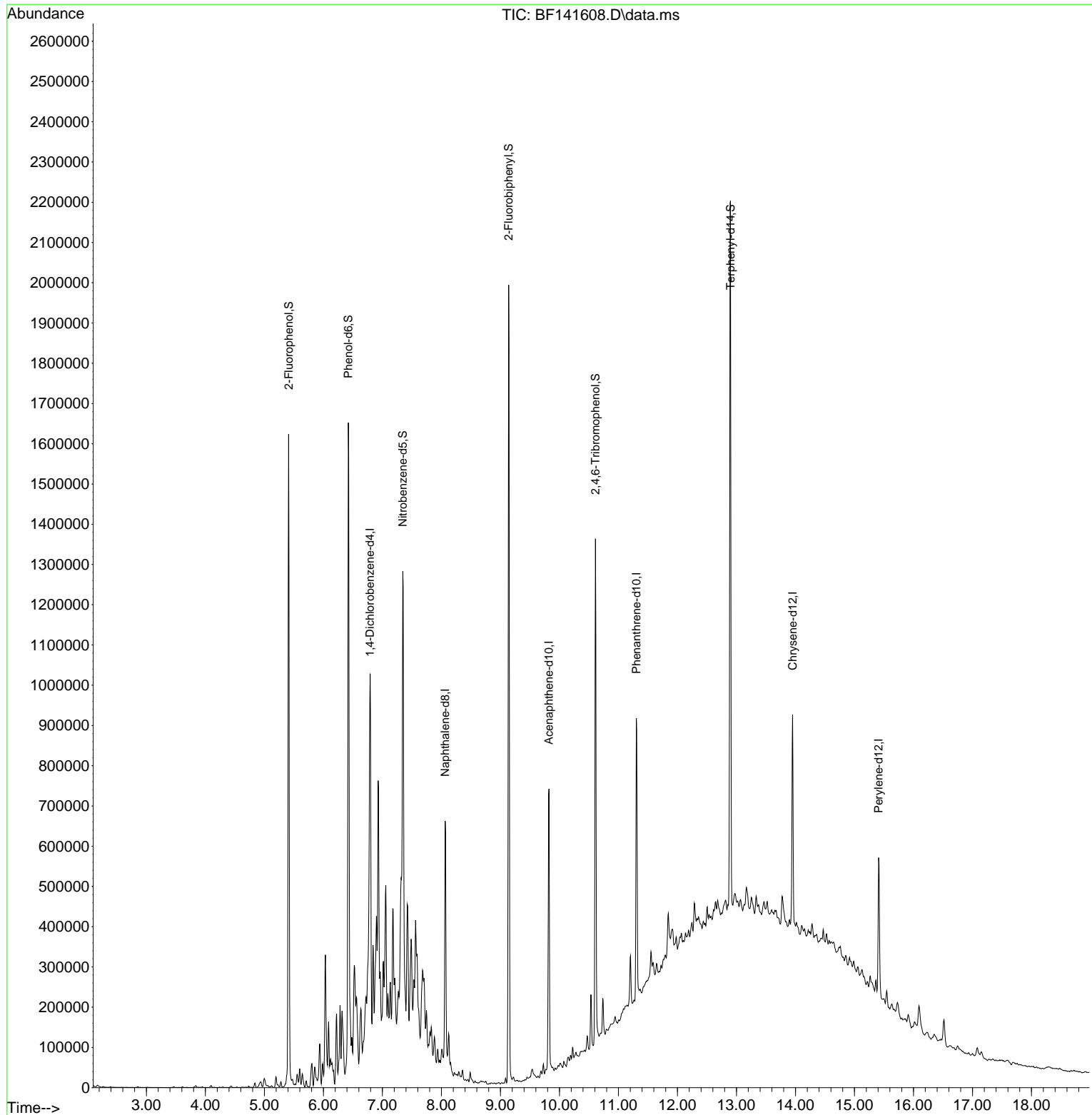
Target Compounds Qvalue

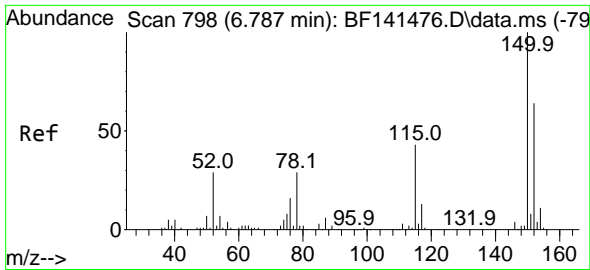
(#) = qualifier out of range (m) = manual integration (+) = signals summed

Data Path : Z:\svoasrv\HPCHEM1\BNA\_F\Data\BF021325\  
 Data File : BF141608.D  
 Acq On : 13 Feb 2025 12:24  
 Operator : RC/JU  
 Sample : Q1237-03  
 Misc :  
 ALS Vial : 7 Sample Multiplier: 1

Instrument :  
 BNA\_F  
 ClientSampleId :  
 HL2PX3

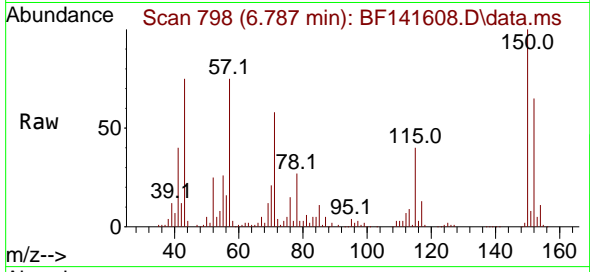
Quant Time: Feb 13 12:54:24 2025  
 Quant Method : Z:\svoasrv\HPCHEM1\BNA\_F\Methods\8270-BF020625.M  
 Quant Title : ASP BNA STANDARDS FOR 5 POINT CALIBRATION  
 QLast Update : Thu Feb 06 16:58:59 2025  
 Response via : Initial Calibration



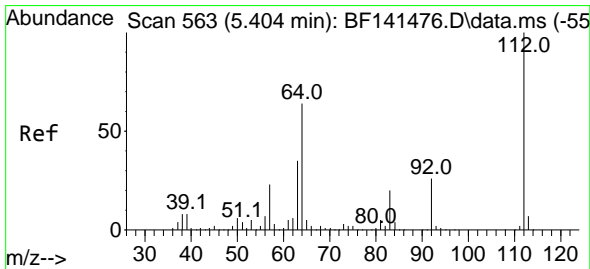
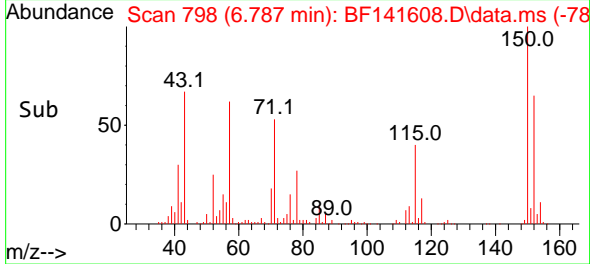
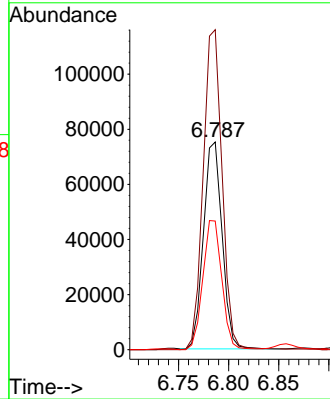


#1  
 1,4-Dichlorobenzene-d4  
 Concen: 20.000 ng  
 RT: 6.787 min Scan# 798  
 Delta R.T. -0.005 min  
 Lab File: BF141608.D  
 Acq: 13 Feb 2025 12:24

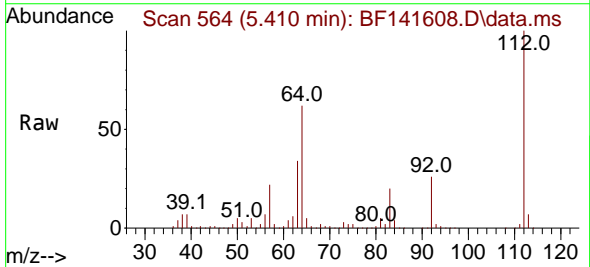
Instrument :  
 BNA\_F  
 ClientSampleId :  
 HL2PX3



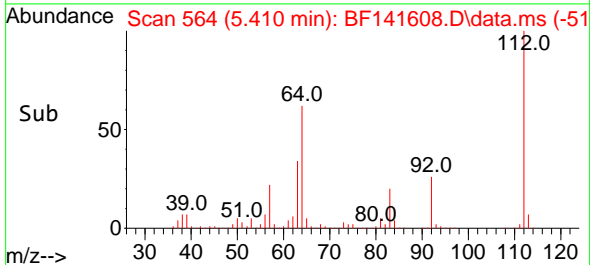
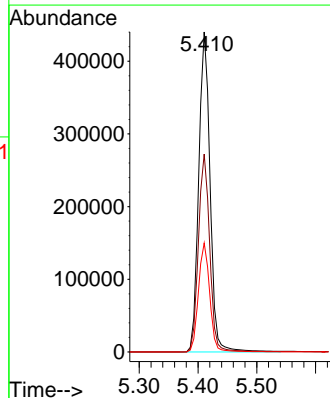
Tgt Ion:152 Resp: 97501  
 Ion Ratio Lower Upper  
 152 100  
 150 154.1 125.0 187.4  
 115 61.9 53.6 80.4

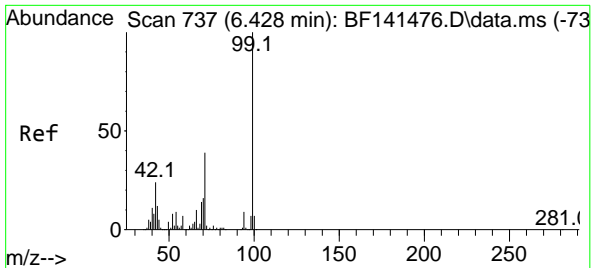


#5  
 2-Fluorophenol  
 Concen: 95.057 ng  
 RT: 5.410 min Scan# 564  
 Delta R.T. 0.000 min  
 Lab File: BF141608.D  
 Acq: 13 Feb 2025 12:24



Tgt Ion:112 Resp: 591179  
 Ion Ratio Lower Upper  
 112 100  
 64 61.9 51.1 76.7  
 63 34.1 28.4 42.6



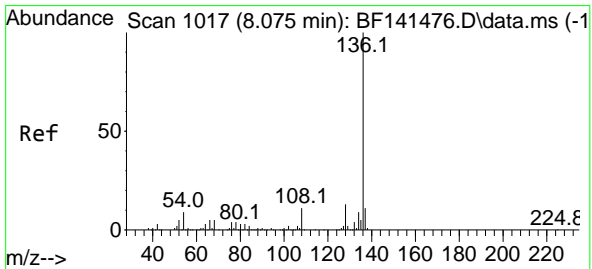
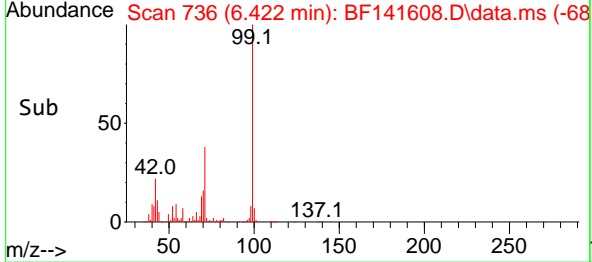
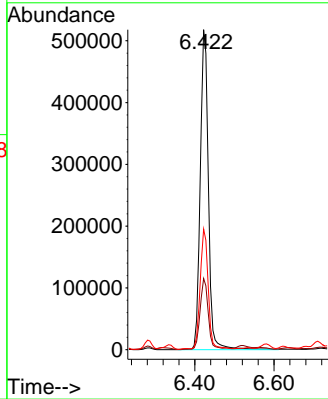
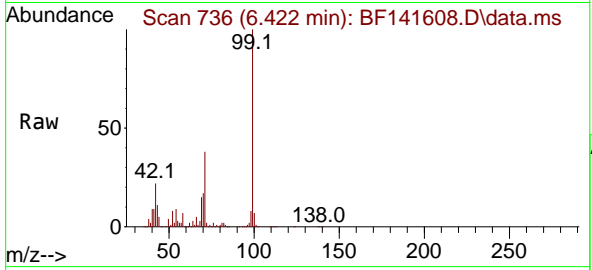


#7  
 Phenol-d6  
 Concen: 93.623 ng  
 RT: 6.422 min Scan# 71  
 Delta R.T. -0.017 min  
 Lab File: BF141608.D  
 Acq: 13 Feb 2025 12:24

Instrument :  
 BNA\_F  
 ClientSampleId :  
 HL2PX3

Tgt Ion: 99 Resp: 735929

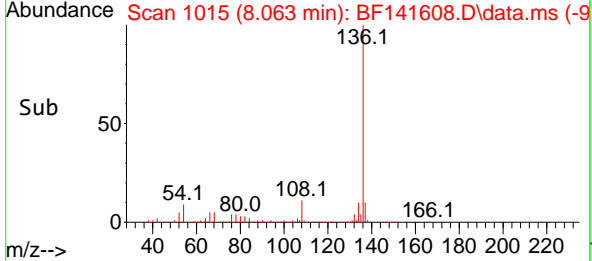
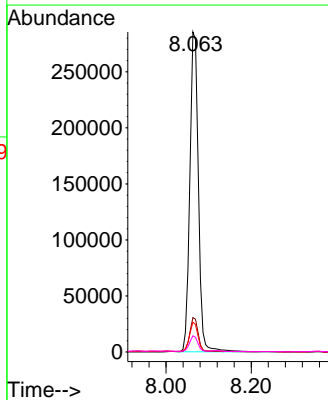
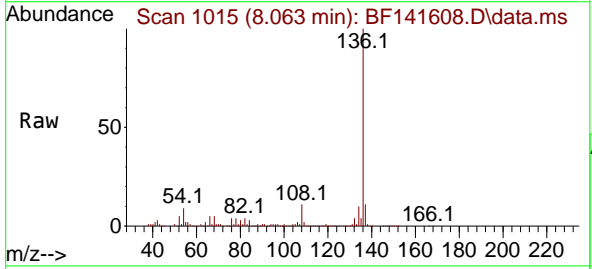
Ion	Ratio	Lower	Upper
99	100		
42	22.2	19.1	28.7
71	37.7	31.1	46.7

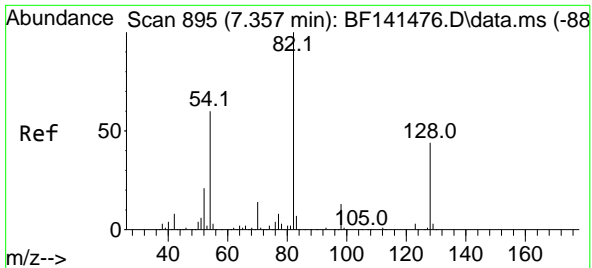


#21  
 Naphthalene-d8  
 Concen: 20.000 ng  
 RT: 8.063 min Scan# 1015  
 Delta R.T. -0.012 min  
 Lab File: BF141608.D  
 Acq: 13 Feb 2025 12:24

Tgt Ion: 136 Resp: 397436

Ion	Ratio	Lower	Upper
136	100		
137	10.7	8.6	13.0
54	9.3	7.2	10.8
68	5.0	3.7	5.5



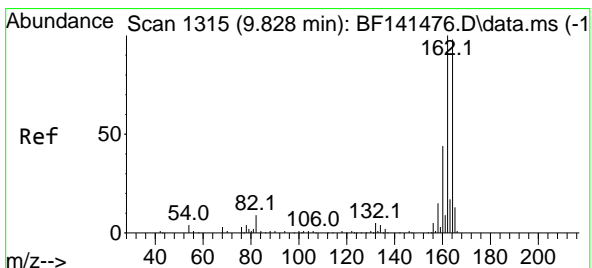
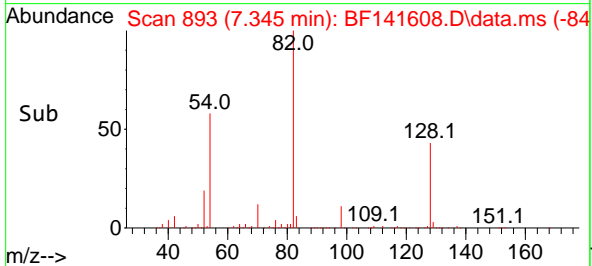
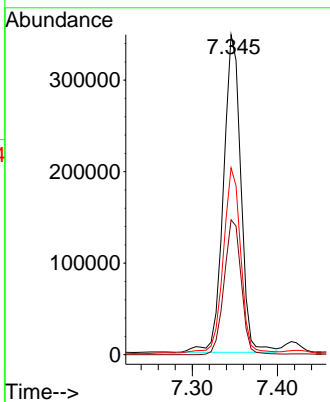
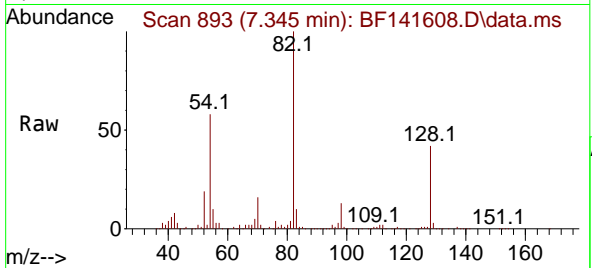


#23  
 Nitrobenzene-d5  
 Concen: 64.673 ng  
 RT: 7.345 min Scan# 895  
 Delta R.T. -0.017 min  
 Lab File: BF141608.D  
 Acq: 13 Feb 2025 12:24

Instrument :  
 BNA\_F  
 ClientSampleId :  
 HL2PX3

Tgt Ion: 82 Resp: 492796

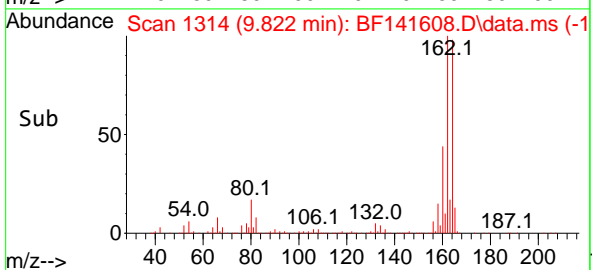
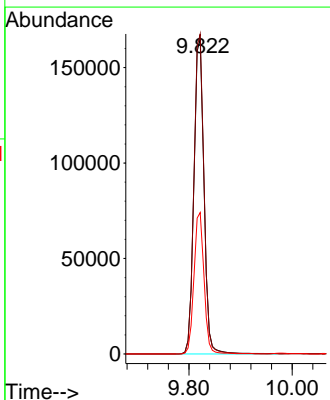
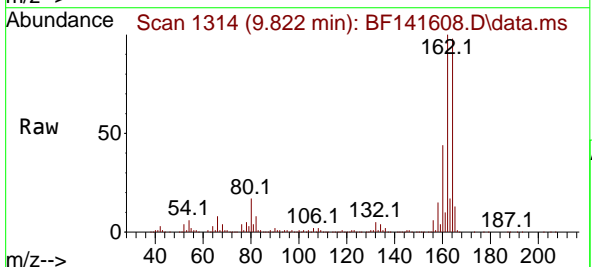
Ion	Ratio	Lower	Upper
82	100		
128	42.2	34.8	52.2
54	58.4	48.2	72.4

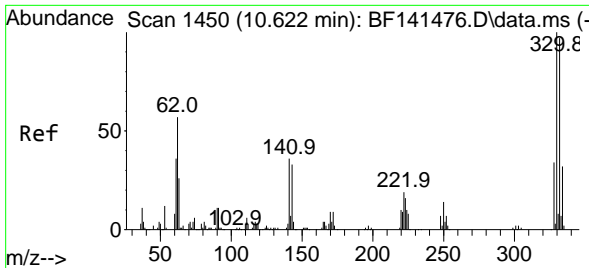


#39  
 Acenaphthene-d10  
 Concen: 20.000 ng  
 RT: 9.822 min Scan# 1314  
 Delta R.T. -0.012 min  
 Lab File: BF141608.D  
 Acq: 13 Feb 2025 12:24

Tgt Ion: 164 Resp: 223685

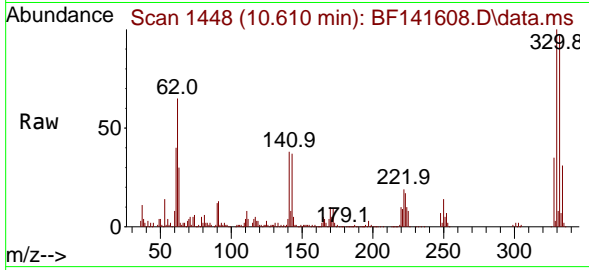
Ion	Ratio	Lower	Upper
164	100		
162	101.7	81.3	121.9
160	45.0	35.9	53.9



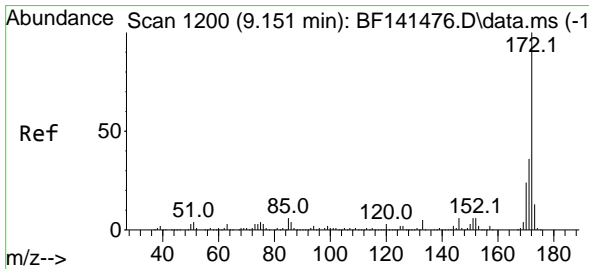
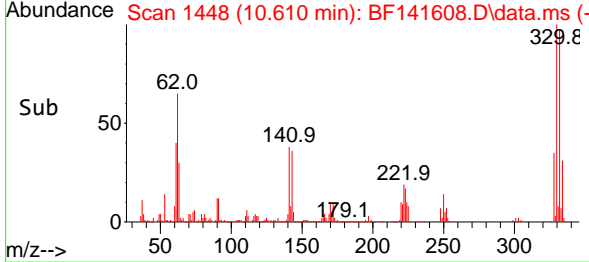
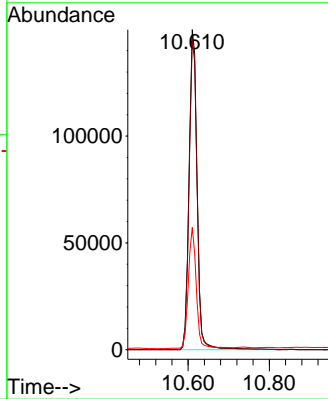


#42  
 2,4,6-Tribromophenol  
 Concen: 91.415 ng  
 RT: 10.610 min Scan# 1448  
 Delta R.T. -0.017 min  
 Lab File: BF141608.D  
 Acq: 13 Feb 2025 12:24

Instrument :  
 BNA\_F  
 ClientSampleId :  
 HL2PX3

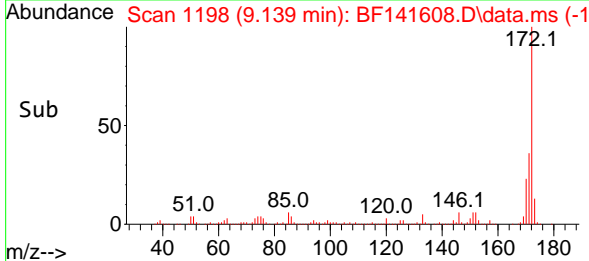
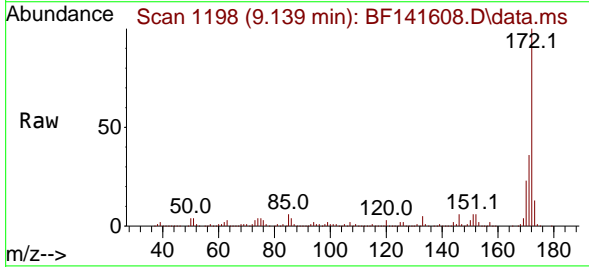
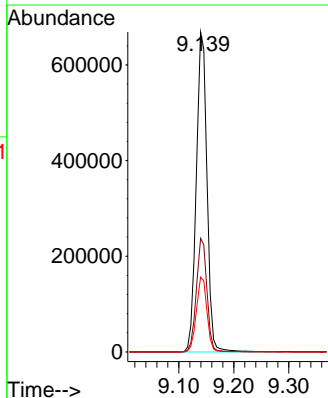


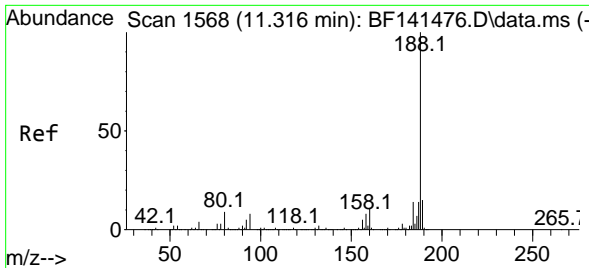
Tgt Ion:330 Resp: 205410  
 Ion Ratio Lower Upper  
 330 100  
 332 96.7 78.5 117.7  
 141 37.9 31.0 46.4



#45  
 2-Fluorobiphenyl  
 Concen: 62.523 ng  
 RT: 9.139 min Scan# 1198  
 Delta R.T. -0.012 min  
 Lab File: BF141608.D  
 Acq: 13 Feb 2025 12:24

Tgt Ion:172 Resp: 907766  
 Ion Ratio Lower Upper  
 172 100  
 171 35.5 28.7 43.1  
 170 23.4 18.9 28.3



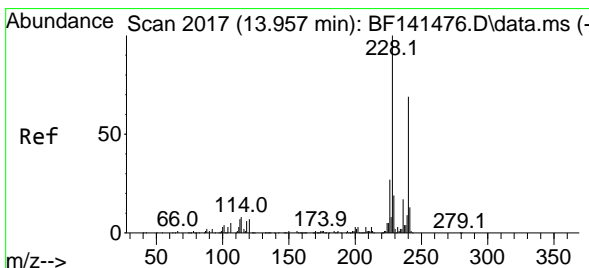
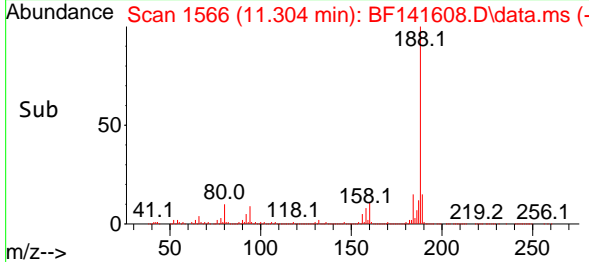
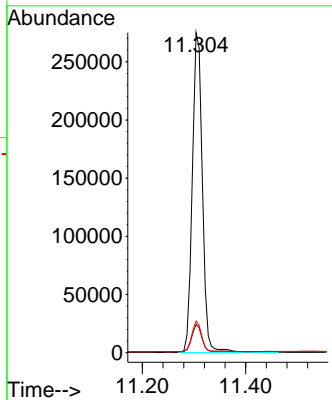
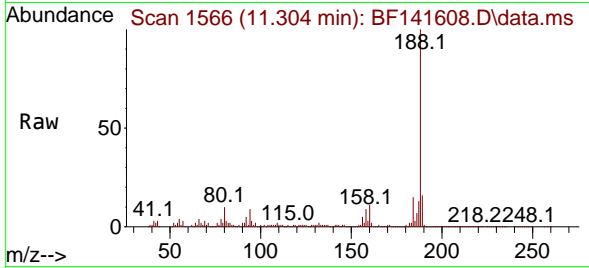


#64  
 Phenanthrene-d10  
 Concen: 20.000 ng  
 RT: 11.304 min Scan# 11  
 Delta R.T. -0.012 min  
 Lab File: BF141608.D  
 Acq: 13 Feb 2025 12:24

Instrument :  
 BNA\_F  
 ClientSampleId :  
 HL2PX3

Tgt Ion:188 Resp: 371884

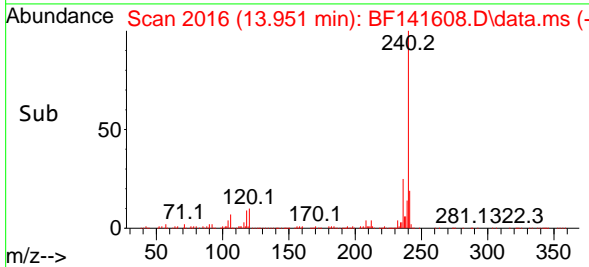
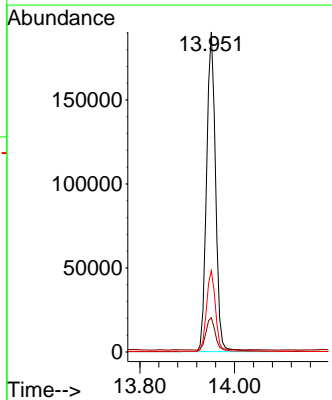
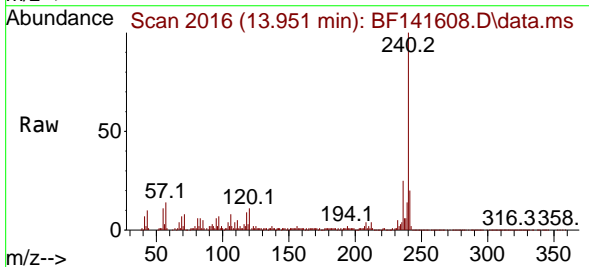
Ion	Ratio	Lower	Upper
188	100		
94	8.9	6.6	10.0
80	9.9	7.3	10.9

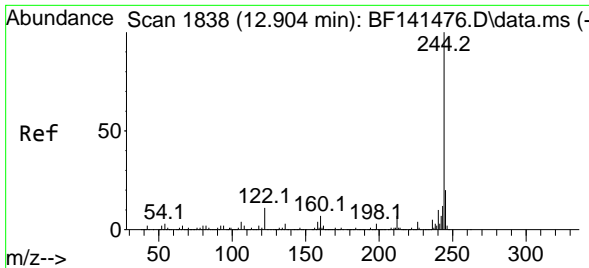


#76  
 Chrysene-d12  
 Concen: 20.000 ng  
 RT: 13.951 min Scan# 2016  
 Delta R.T. -0.012 min  
 Lab File: BF141608.D  
 Acq: 13 Feb 2025 12:24

Tgt Ion:240 Resp: 250100

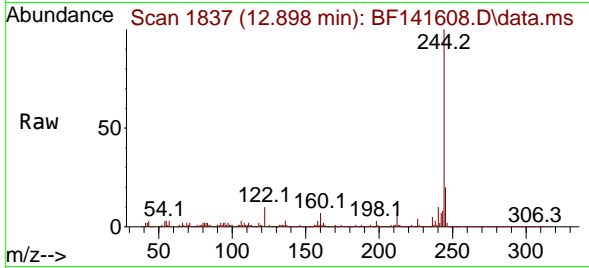
Ion	Ratio	Lower	Upper
240	100		
120	10.7	8.0	12.0
236	25.4	19.8	29.8



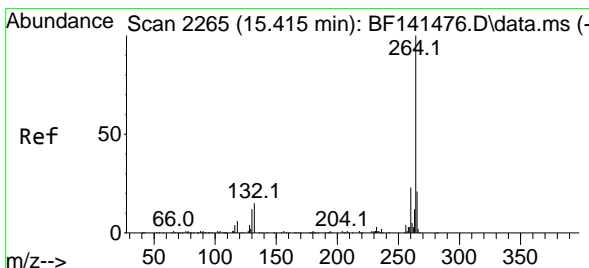
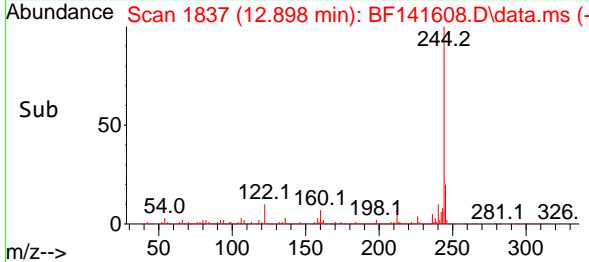
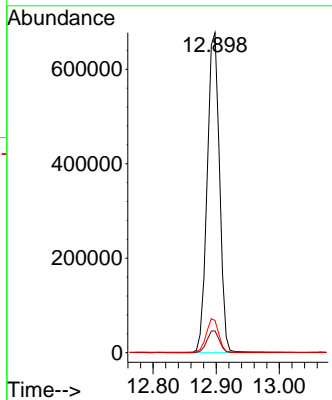


#79  
 Terphenyl-d14  
 Concen: 61.773 ng  
 RT: 12.898 min Scan# 11  
 Delta R.T. -0.006 min  
 Lab File: BF141608.D  
 Acq: 13 Feb 2025 12:24

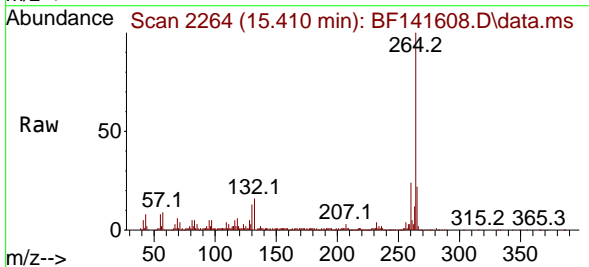
Instrument :  
 BNA\_F  
 ClientSampleId :  
 HL2PX3



Tgt Ion:244 Resp: 915157  
 Ion Ratio Lower Upper  
 244 100  
 212 6.8 5.6 8.4  
 122 10.0 8.4 12.6



#86  
 Perylene-d12  
 Concen: 20.000 ng  
 RT: 15.410 min Scan# 2264  
 Delta R.T. -0.006 min  
 Lab File: BF141608.D  
 Acq: 13 Feb 2025 12:24



Tgt Ion:264 Resp: 205278  
 Ion Ratio Lower Upper  
 264 100  
 260 23.5 18.6 28.0  
 265 21.5 17.0 25.4

