

Data Path : Z:\HPCHEM1\BNA_F\DATA\BF021517\
 Data File : BF092962.D
 Acq On : 15 Feb 2017 20:25
 Operator : SJ/MA
 Sample : I1838-01
 Misc :
 ALS Vial : 14 Sample Multiplier: 1

Instrument :
 BNA_F
 ClientSampleId :
 FK-BPM-01-BB9-BB10-BB11-BB12

Integration Parameters: rteint.p
 Integrator: RTE
 Smoothing : ON Filtering: 5
 Sampling : 1 Min Area: 3 % of largest Peak
 Start Thrs: 0.2 Max Peaks: 100
 Stop Thrs : 0 Peak Location: TOP

If leading or trailing edge < 100 prefer < Baseline drop else tangent >
 Peak separation: 5

Method : Z:\HPCHEM1\BNA_F\METHODS\8270-BF013017.M
 Title : ASP BNA STANDARDS FOR 5 POINT CALIBRATION

Signal : TIC

peak #	R.T. min	first scan	max scan	last scan	PK TY	peak height	corr. area	corr. % max.	% of total
1	5.047	256	259	270	rBV	1206268	1851098	37.94%	4.557%
2	5.470	293	296	299	rBV	3384831	4136714	84.78%	10.184%
3	6.510	384	387	390	rBV	3420985	4226239	86.62%	10.405%
4	6.636	396	398	401	rBV	3114282	4357937	89.31%	10.729%
5	6.876	416	419	421	rBV	608406	822774	16.86%	2.026%
6	7.024	430	432	435	rBV	2730103	3193583	65.45%	7.862%
7	7.436	465	468	471	rBV	2050148	2786926	57.12%	6.861%
8	8.156	528	531	533	rBV	1348767	1160542	23.78%	2.857%
9	9.230	622	625	628	rBV	4381981	4468396	91.58%	11.001%
10	9.619	657	659	661	rBV	181355	209338	4.29%	0.515%
11	9.825	669	677	681	rBV2	112745	240995	4.94%	0.593%
12	9.905	681	684	686	rVB	1521022	1315012	26.95%	3.237%
13	10.339	713	722	723	rBV	85587	129615	2.66%	0.319%
14	10.693	750	753	756	rBV	2304474	2693276	55.20%	6.631%
15	10.808	761	763	768	rVB	147559	166907	3.42%	0.411%
16	11.253	800	802	804	rBV	107475	99553	2.04%	0.245%
17	11.391	811	814	816	rBV	1439245	1365112	27.98%	3.361%
18	12.979	950	953	955	rBV	4220954	4879335	100.00%	12.013%
19	13.859	1028	1030	1037	rBV	141602	210104	4.31%	0.517%
20	14.019	1042	1044	1047	rVB	1271145	1250789	25.63%	3.079%
21	15.460	1167	1170	1175	rBV	758915	1054422	21.61%	2.596%

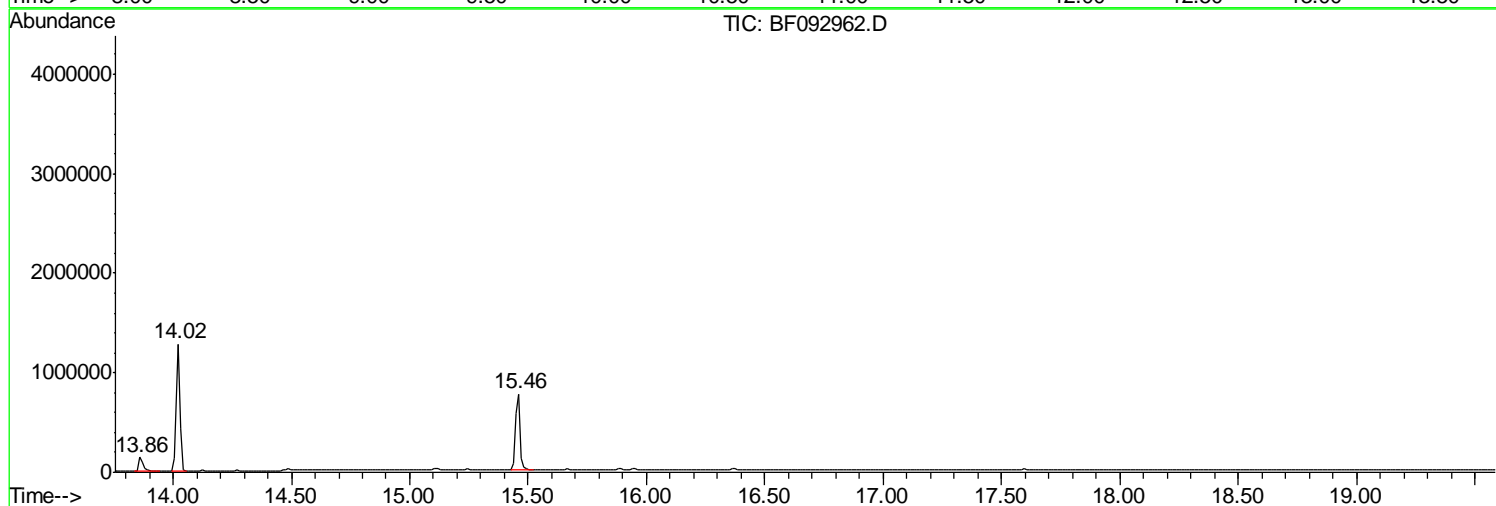
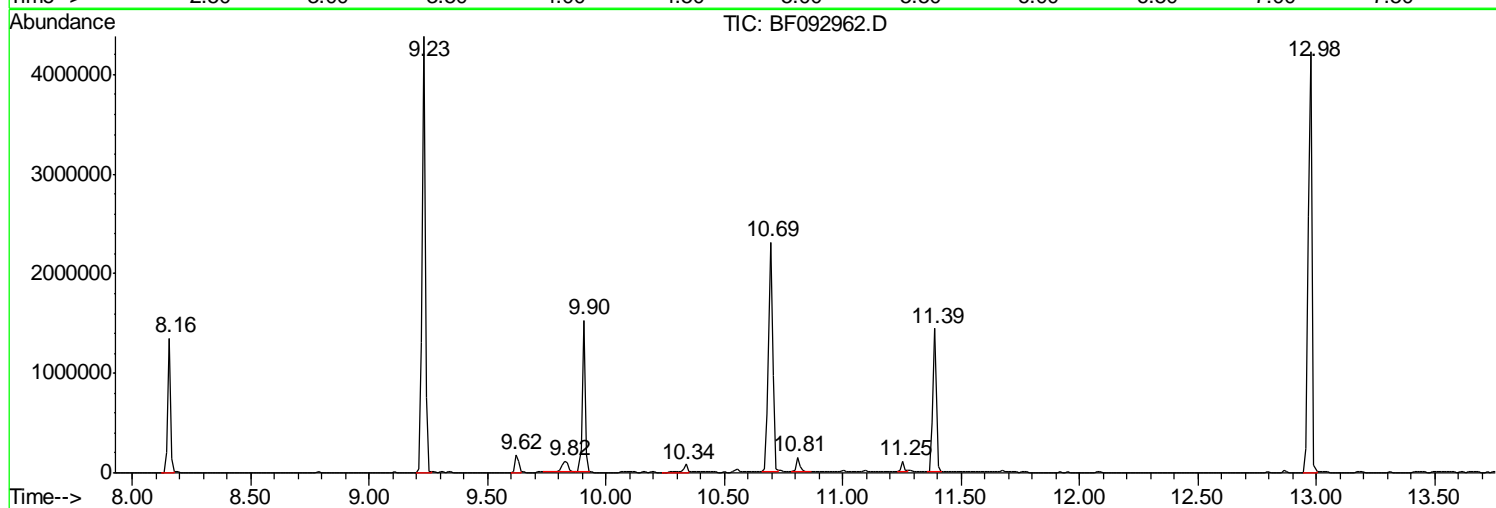
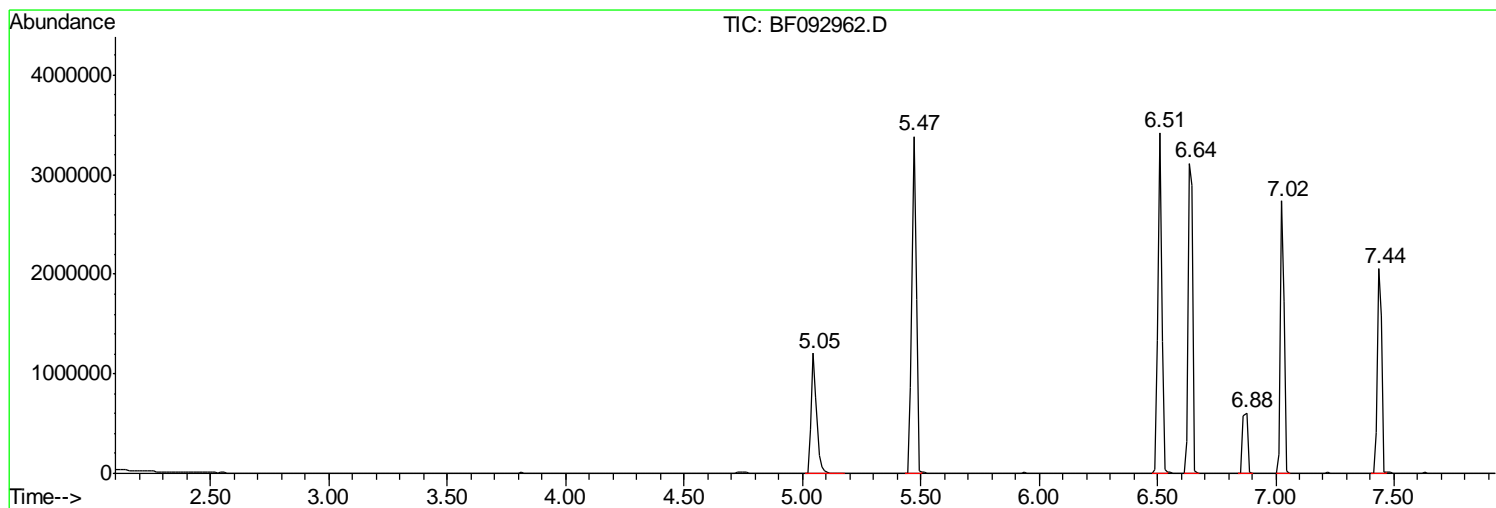
Sum of corrected areas: 40618667

Data Path : Z:\HPCHEM1\BNA_F\DATA\BF021517\
Data File : BF092962.D
Acq On : 15 Feb 2017 20:25
Operator : SJ/MA
Sample : I1838-01
Misc :
ALS Vial : 14 Sample Multiplier: 1

Instrument :
BNA_F
ClientSampleId :
FK-BPM-01-BB9-BB10-BB11-BB12

Quant Method : Z:\HPCHEM1\BNA_F\METHODS\8270-BF013017.M
Quant Title : ASP BNA STANDARDS FOR 5 POINT CALIBRATION

TIC Library : C:\DATABASE\NIST02.L
TIC Integration Parameters: LSCINT.P



Data Path : Z:\HPCHEM1\BNA_F\DATA\BF021517\
 Data File : BF092962.D
 Acq On : 15 Feb 2017 20:25
 Operator : SJ/MA
 Sample : I1838-01
 Misc :
 ALS Vial : 14 Sample Multiplier: 1

Instrument :
 BNA_F
 ClientSampleId :
 FK-BPM-01-BB9-BB10-BB11-BB12

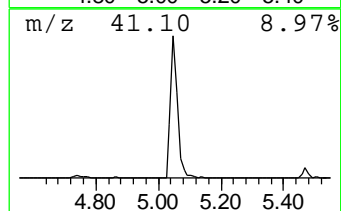
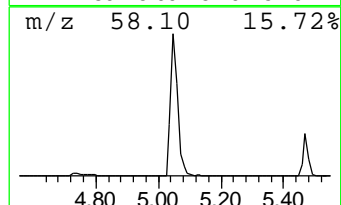
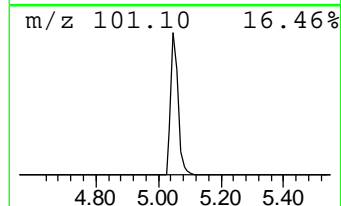
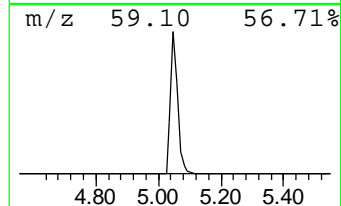
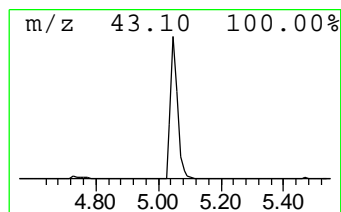
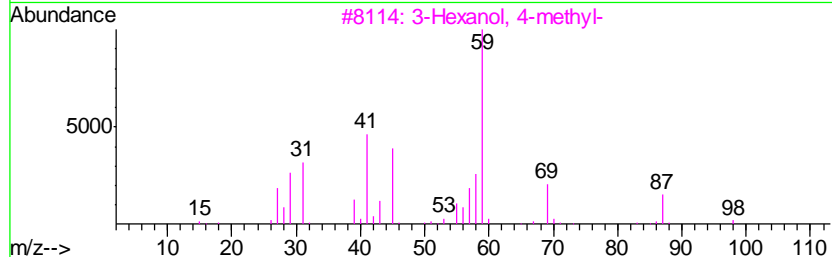
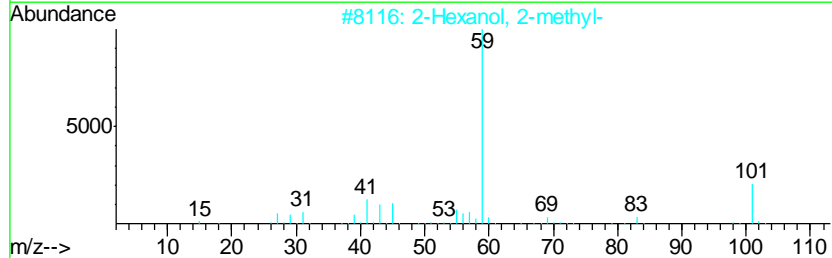
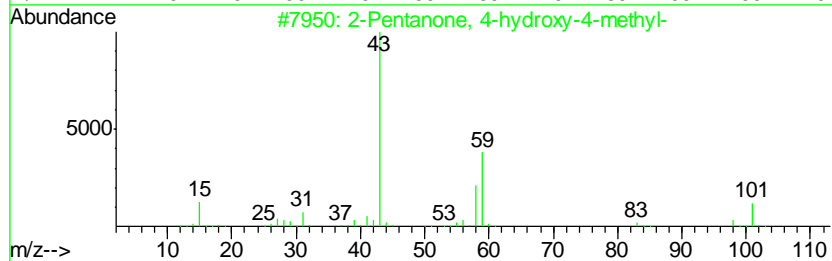
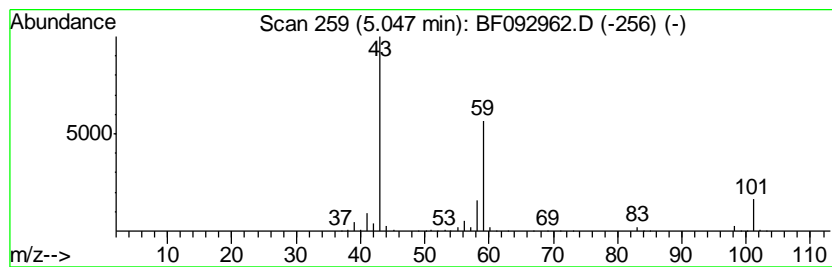
Quant Method : Z:\HPCHEM1\BNA_F\METHODS\8270-BF013017.M
 Quant Title : ASP BNA STANDARDS FOR 5 POINT CALIBRATION

TIC Library : C:\DATABASE\NIST02.L
 TIC Integration Parameters: LSCINT.P

 Peak Number 1 2-Pentanone, 4-hydroxy-4-me... Concentration Rank 3

R.T.	EstConc	Area	Relative to ISTD	R.T.
5.05	45.00 ng	1851100	1,4-Dichlorobenzene-d4	6.88

Hit#	of	Tentative ID	MW	MolForm	CAS#	Qual
1	5	2-Pentanone, 4-hydroxy-4-methyl-	116	C6H12O2	000123-42-2	59
2		2-Hexanol, 2-methyl-	116	C7H16O	000625-23-0	33
3		3-Hexanol, 4-methyl-	116	C7H16O	000615-29-2	33
4		Acetic acid, cyano-, 1,1-dimethy...	141	C7H11NO2	001116-98-9	23
5		Acetic acid, 1,1-dimethylethyl e...	116	C6H12O2	000540-88-5	9



Data Path : Z:\HPCHEM1\BNA_F\DATA\BF021517\
 Data File : BF092962.D
 Acq On : 15 Feb 2017 20:25
 Operator : SJ/MA
 Sample : I1838-01
 Misc :
 ALS Vial : 14 Sample Multiplier: 1

Instrument :
 BNA_F
 ClientSampleId :
 FK-BPM-01-BB9-BB10-BB11-BB12

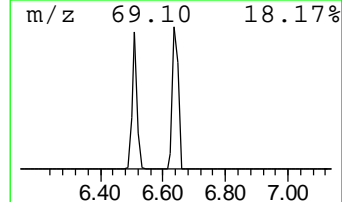
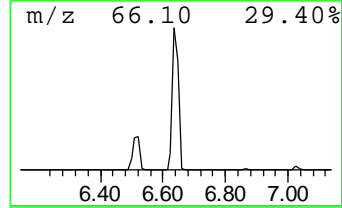
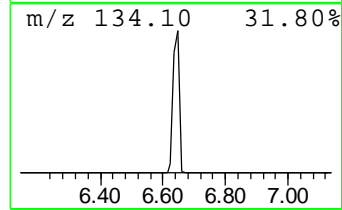
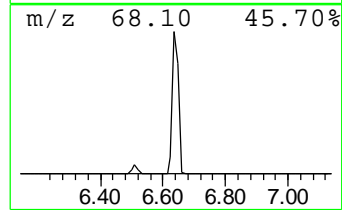
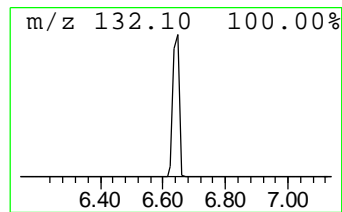
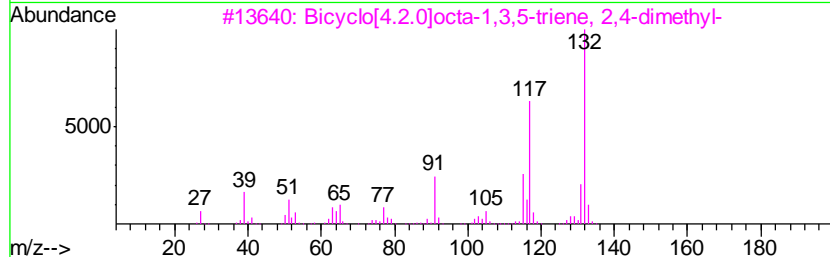
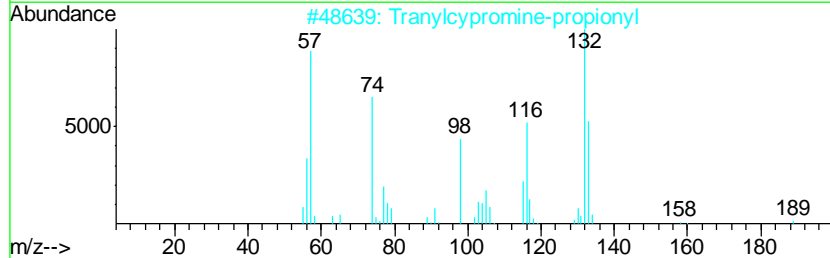
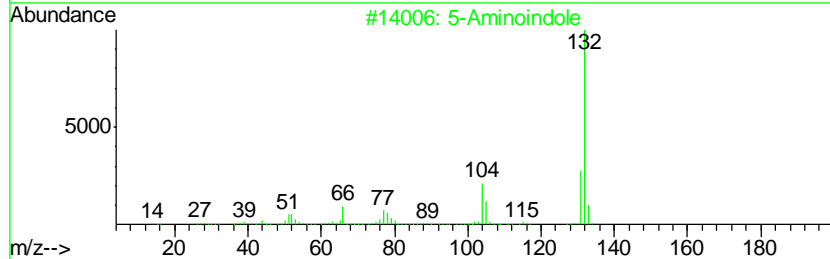
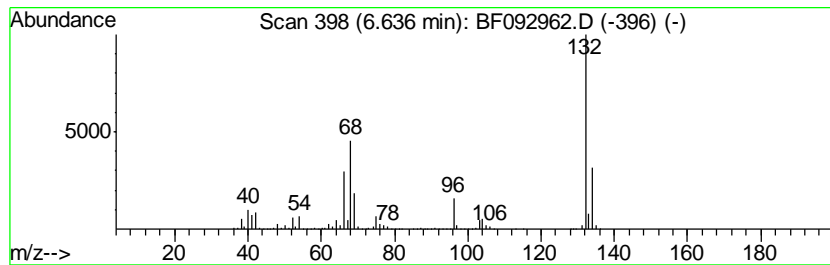
Quant Method : Z:\HPCHEM1\BNA_F\METHODS\8270-BF013017.M
 Quant Title : ASP BNA STANDARDS FOR 5 POINT CALIBRATION

TIC Library : C:\DATABASE\NIST02.L
 TIC Integration Parameters: LSCINT.P

 Peak Number 2 unknown6.64 Concentration Rank 1

R.T.	EstConc	Area	Relative to ISTD	R.T.
6.64	105.93 ng	4357940	1,4-Dichlorobenzene-d4	6.88

Hit#	of	Tentative ID	MW	MolForm	CAS#	Qual
1	5	5-Aminoindole	132	C8H8N2	005192-03-0	12
2		Tranylcypromine-propionyl	189	C12H15NO	1000123-86-3	10
3		Bicyclo[4.2.0]octa-1,3,5-triene,...	132	C10H12	028749-81-7	9
4		1-Aminoindan	133	C9H11N	034698-41-4	9
5		4-Methylpyrrolo[1,2-a]pyrazine	132	C8H8N2	064608-60-2	9



Data Path : Z:\HPCHEM1\BNA_F\DATA\BF021517\
 Data File : BF092962.D
 Acq On : 15 Feb 2017 20:25
 Operator : SJ/MA
 Sample : I1838-01
 Misc :
 ALS Vial : 14 Sample Multiplier: 1

Instrument :
 BNA_F
 ClientSampled :
 FK-BPM-01-BB9-BB10-BB11-BB12

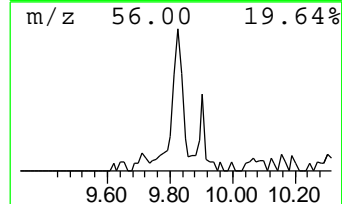
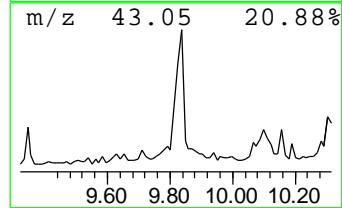
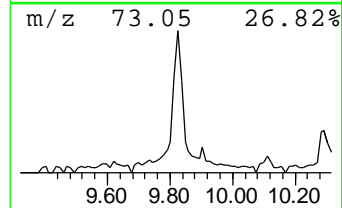
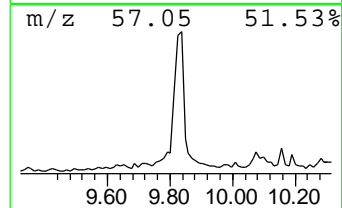
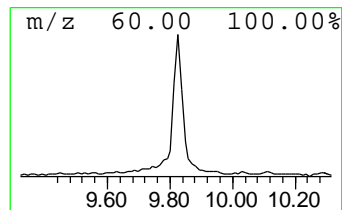
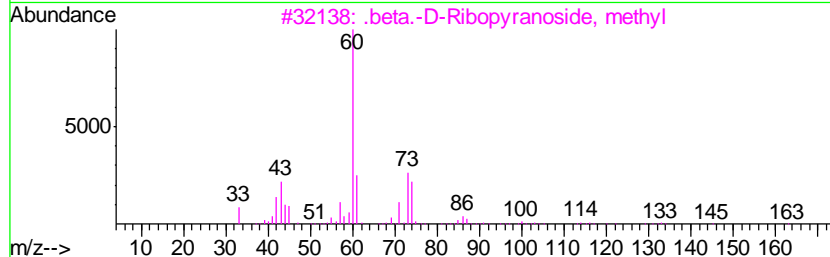
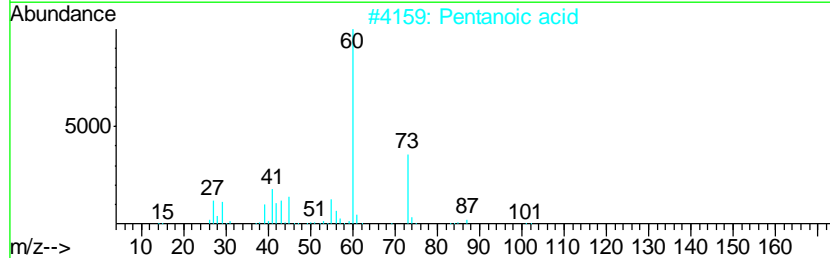
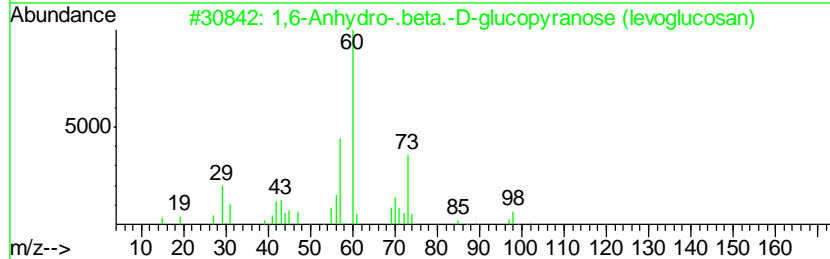
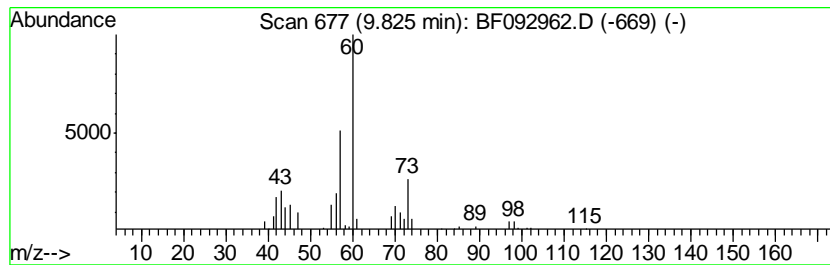
Quant Method : Z:\HPCHEM1\BNA_F\METHODS\8270-BF013017.M
 Quant Title : ASP BNA STANDARDS FOR 5 POINT CALIBRATION

TIC Library : C:\DATABASE\NIST02.L
 TIC Integration Parameters: LSCINT.P

 Peak Number 4 1,6-Anhydro-.beta.-D-glucop... Concentration Rank 4

R.T.	EstConc	Area	Relative to ISTD	R.T.
9.82	3.67 ng	240995	Acenaphthene-d10	9.90

Hit#	of	Tentative ID	MW	MolForm	CAS#	Qual
1	5	1,6-Anhydro-.beta.-D-glucopyrano...	162	C6H10O5	000498-07-7	72
2		Pentanoic acid	102	C5H10O2	000109-52-4	50
3		.beta.-D-Ribopyranoside, methyl	164	C6H12O5	017289-61-1	40
4		3,4-Altrosan	162	C6H10O5	1000129-76-4	40
5		Hexanoic acid	116	C6H12O2	000142-62-1	33



Data Path : Z:\HPCHEM1\BNA_F\DATA\BF021517\
 Data File : BF092962.D
 Acq On : 15 Feb 2017 20:25
 Operator : SJ/MA
 Sample : I1838-01
 Misc :
 ALS Vial : 14 Sample Multiplier: 1

Instrument :
 BNA_F
 ClientSampleID :
 FK-BPM-01-BB9-BB10-BB11-BB12

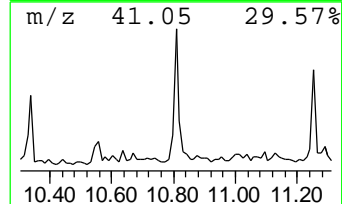
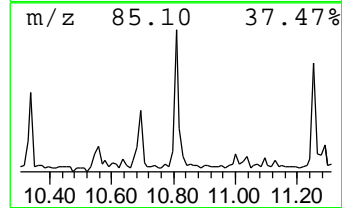
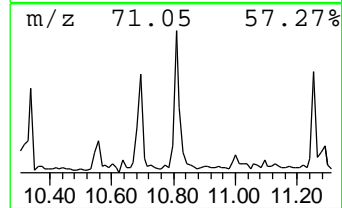
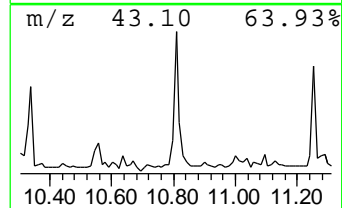
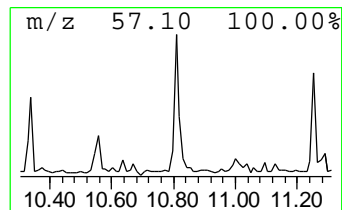
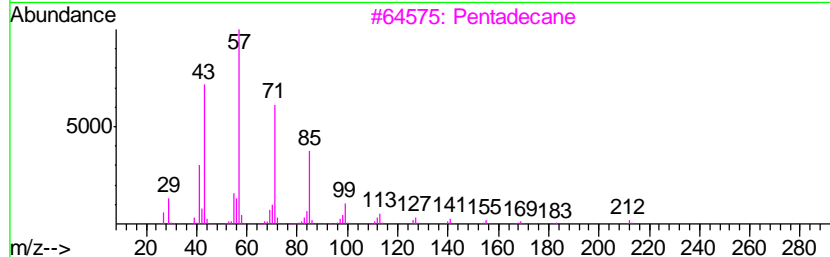
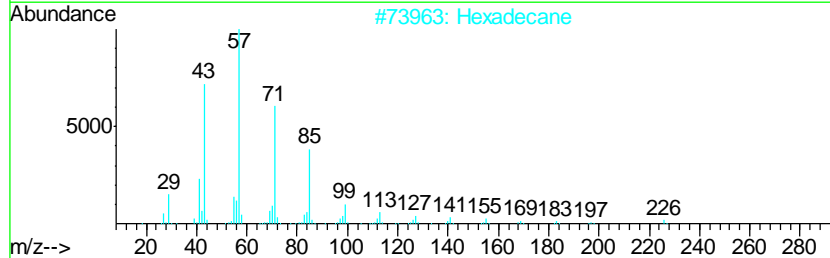
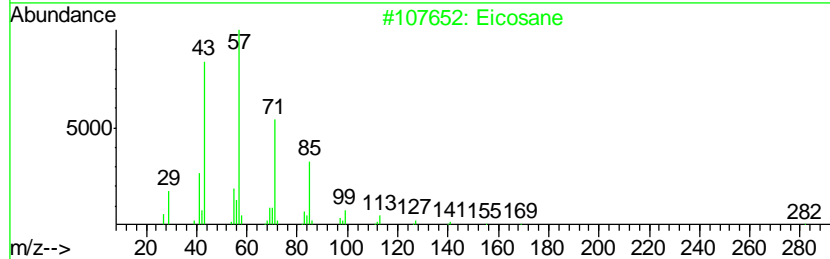
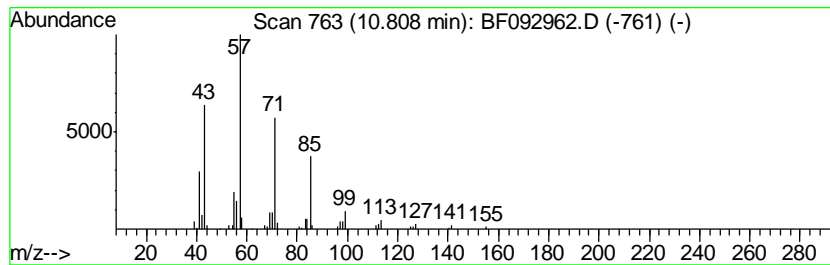
Quant Method : Z:\HPCHEM1\BNA_F\METHODS\8270-BF013017.M
 Quant Title : ASP BNA STANDARDS FOR 5 POINT CALIBRATION

TIC Library : C:\DATABASE\NIST02.L
 TIC Integration Parameters: LSCINT.P

 Peak Number 5 Eicosane Concentration Rank 6

R.T.	EstConc	Area	Relative to ISTD	R.T.
10.81	2.45 ng	166907	Phenanthrene-d10	11.39

Hit#	of	Tentative ID	MW	MolForm	CAS#	Qual
1	5	Eicosane	282	C20H42	000112-95-8	91
2		Hexadecane	226	C16H34	000544-76-3	90
3		Pentadecane	212	C15H32	000629-62-9	90
4		Tetradecane	198	C14H30	000629-59-4	90
5		Tridecane	184	C13H28	000629-50-5	90



Data Path : Z:\HPCHEM1\BNA_F\DATA\BF021517\
 Data File : BF092962.D
 Acq On : 15 Feb 2017 20:25
 Operator : SJ/MA
 Sample : I1838-01
 Misc :
 ALS Vial : 14 Sample Multiplier: 1

Instrument :
 BNA_F
 ClientSampleId :
 FK-BPM-01-BB9-BB10-BB11-BB12

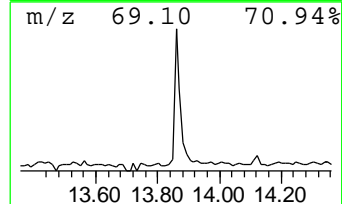
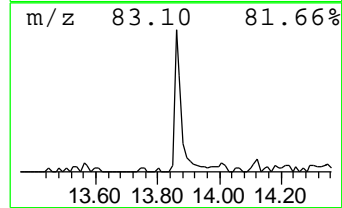
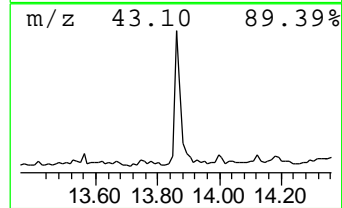
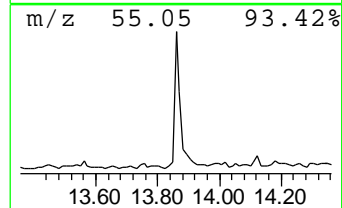
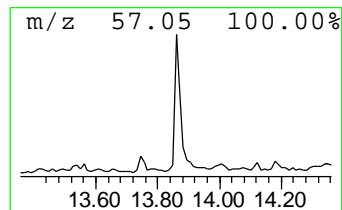
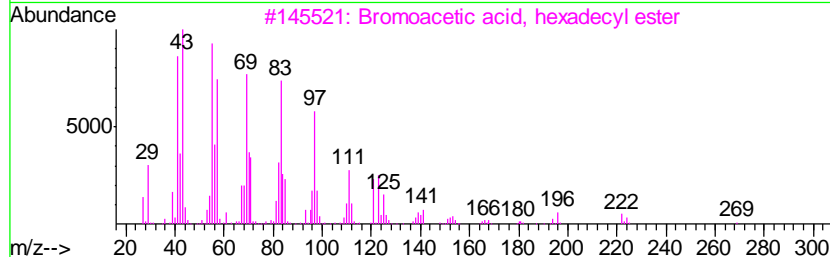
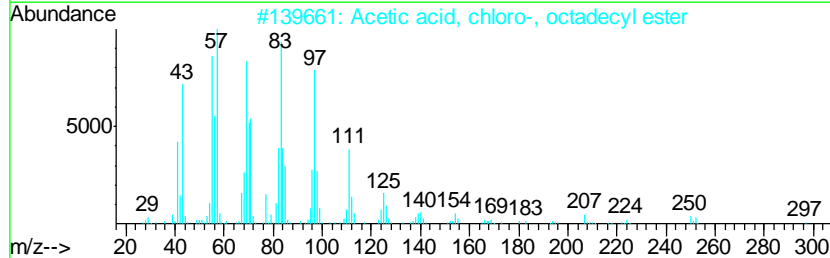
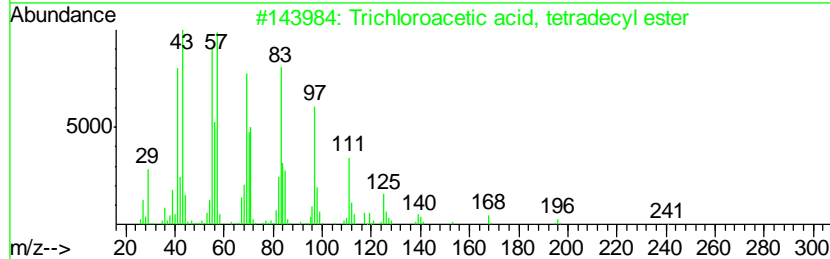
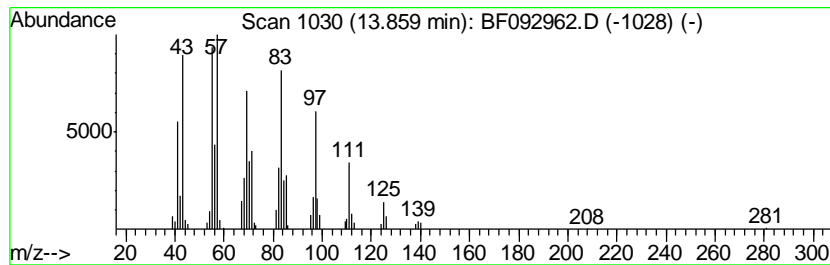
Quant Method : Z:\HPCHEM1\BNA_F\METHODS\8270-BF013017.M
 Quant Title : ASP BNA STANDARDS FOR 5 POINT CALIBRATION

TIC Library : C:\DATABASE\NIST02.L
 TIC Integration Parameters: LSCINT.P

 Peak Number 6 Trichloroacetic acid, tetra... Concentration Rank 5

R.T.	EstConc	Area	Relative to ISTD	R.T.
13.86	3.36 ng	210104	Chrysene-d12	14.02

Hit#	of	Tentative ID	MW	MolForm	CAS#	Qual
1	5	Trichloroacetic acid, tetradecyl...	358	C16H29Cl3O2	074339-52-9	91
2		Acetic acid, chloro-, octadecyl ...	346	C20H39ClO2	005348-82-3	91
3		Bromoacetic acid, hexadecyl ester	362	C18H35BrO2	005454-48-8	91
4		5-Eicosene, (E)-	280	C20H40	074685-30-6	91
5		Trichloroacetic acid, pentadecyl...	372	C17H31Cl3O2	074339-53-0	91



Data Path : Z:\HPCHEM1\BNA_F\DATA\BF021517\
Data File : BF092962.D
Acq On : 15 Feb 2017 20:25
Operator : SJ/MA
Sample : I1838-01
Misc :
ALS Vial : 14 Sample Multiplier: 1

Instrument :
BNA_F
ClientSampleId :
FK-BPM-01-BB9-BB10-BB11-BB12

Quant Method : Z:\HPCHEM1\BNA_F\METHODS\8270-BF013017.M
Quant Title : ASP BNA STANDARDS FOR 5 POINT CALIBRATION

TIC Library : C:\DATABASE\NIST02.L
TIC Integration Parameters: LSCINT.P

TIC Top Hit name	RT	EstConc	Units	Response	--Internal Standard--			
					#	RT	Resp	Conc
2-Pentanone, 4-hy...	5.05	45.0	ng	1851100	1	6.88	822774	20.0
unknown6.64	6.64	105.9	ng	4357940	1	6.88	822774	20.0
1,6-Anhydro-.beta...	9.82	3.7	ng	240995	3	9.90	1315010	20.0
Eicosane	10.81	2.5	ng	166907	4	11.39	1365110	20.0
Trichloroacetic a...	13.86	3.4	ng	210104	5	14.02	1250790	20.0