

Data Path : Z:\HPCHEM1\BNA_F\DATA\BF021715\
 Data File : BF077344.D
 Acq On : 18 Feb 2015 6:00
 Operator : TP/IZ
 Sample : G1302-05
 Misc : W
 ALS Vial : 24 Sample Multiplier: 1

Instrument :
 BNA_F
 ClientSampleId :
 FYMW-09

Integration Parameters: rteint.p
 Integrator: RTE
 Smoothing : ON
 Sampling : 1
 Start Thrs: 0.2
 Stop Thrs : 0

Filtering: 5
 Min Area: 3 % of largest Peak
 Max Peaks: 100
 Peak Location: TOP

If leading or trailing edge < 100 prefer < Baseline drop else tangent >
 Peak separation: 5

Method : Z:\HPCHEM1\BNA_F\METHODS\8270-BF021715.M
 Title : ASP BNA STANDARDS FOR 5 POINT CALIBRATION

Signal : TIC

peak #	R.T. min	first scan	max scan	last scan	PK TY	peak height	corr. area	corr. % max.	% of total
1	1.001	8	10	23	rVB2	39074	73507	2.74%	0.416%
2	1.687	66	70	73	rBV	365439	556816	20.76%	3.153%
3	1.870	83	86	89	rBV	531489	672311	25.07%	3.807%
4	1.916	89	90	94	rBV	28131	34684	1.29%	0.196%
5	5.184	374	376	379	rBV	52568	82531	3.08%	0.467%
6	5.664	415	418	421	rVB	649292	626322	23.35%	3.546%
7	6.910	525	527	530	rVB	324442	372389	13.89%	2.108%
8	7.082	539	542	545	rBV	1523662	1377419	51.36%	7.799%
9	7.379	565	568	570	rBV	373176	370396	13.81%	2.097%
10	7.562	582	584	586	rBV	1572996	1444406	53.86%	8.178%
11	8.065	626	628	631	rVB	1152850	1036644	38.65%	5.870%
12	8.956	703	706	708	rBV	543645	520747	19.42%	2.948%
13	9.653	765	767	769	rVB	51616	58246	2.17%	0.330%
14	10.305	821	824	826	rVB	2301034	2458887	91.69%	13.922%
15	10.465	836	838	840	rVB	77978	71254	2.66%	0.403%
16	10.796	865	867	870	rBV3	37888	53981	2.01%	0.306%
17	11.128	894	896	898	rBV2	553779	597062	22.26%	3.381%
18	11.174	898	900	902	rVB	64995	63556	2.37%	0.360%
19	11.882	960	962	965	rBV	26088	28669	1.07%	0.162%
20	12.031	973	975	979	rVB	189293	185579	6.92%	1.051%
21	12.111	979	982	985	rBV	1438593	1371462	51.14%	7.765%
22	12.557	1018	1021	1023	rVV	115242	143033	5.33%	0.810%
23	12.614	1023	1026	1034	rVB	28978	67364	2.51%	0.381%
24	12.922	1049	1053	1055	rBV	34369	34195	1.28%	0.194%
25	12.979	1055	1058	1059	rVV	640654	636037	23.72%	3.601%
26	13.002	1059	1060	1062	rVB	55055	52067	1.94%	0.295%
27	13.231	1076	1080	1082	rBV	141003	192598	7.18%	1.090%
28	13.357	1088	1091	1101	rVB6	13449	39144	1.46%	0.222%
29	13.688	1117	1120	1122	rBV	46301	62702	2.34%	0.355%
30	14.340	1174	1177	1178	rBV2	15837	29680	1.11%	0.168%
31	14.374	1178	1180	1184	rVB	30843	68438	2.55%	0.387%
32	14.580	1195	1198	1201	rVB2	22823	50314	1.88%	0.285%
33	14.671	1204	1206	1209	rBV2	27628	34653	1.29%	0.196%
34	14.980	1230	1233	1235	rBV	2538360	2681808	100.00%	15.184%

Data Path : Z:\HPCHEM1\BNA_F\DATA\BF021715\
Data File : BF077344.D
Acq On : 18 Feb 2015 6:00
Operator : TP/IZ
Sample : G1302-05
Misc : W
ALS Vial : 24 Sample Multiplier: 1

Instrument :
BNA_F
ClientSampleId :
FYMW-09

Integration Parameters: rteint.p
Integrator: RTE
Smoothing : ON Filtering: 5
Sampling : 1 Min Area: 3 % of largest Peak
Start Thrs: 0.2 Max Peaks: 100
Stop Thrs : 0 Peak Location: TOP

If leading or trailing edge < 100 prefer < Baseline drop else tangent >
Peak separation: 5

Method : Z:\HPCHEM1\BNA_F\METHODS\8270-BF021715.M
Title : ASP BNA STANDARDS FOR 5 POINT CALIBRATION

35	15.277	1257	1259	1260	rBV	19472	27299	1.02%	0.155%
36	15.563	1282	1284	1287	rBV	75707	86298	3.22%	0.489%
37	16.146	1333	1335	1340	rBV	100901	132791	4.95%	0.752%
38	16.271	1344	1346	1349	rBV	500800	655043	24.43%	3.709%
39	18.043	1498	1501	1504	rBV	499910	611188	22.79%	3.461%

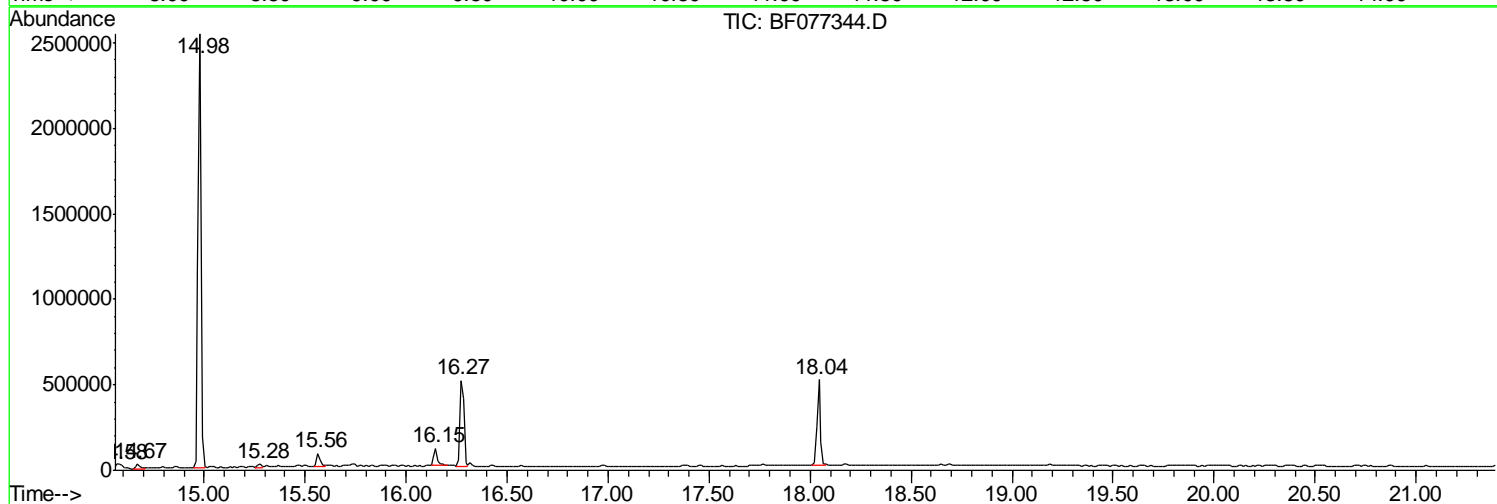
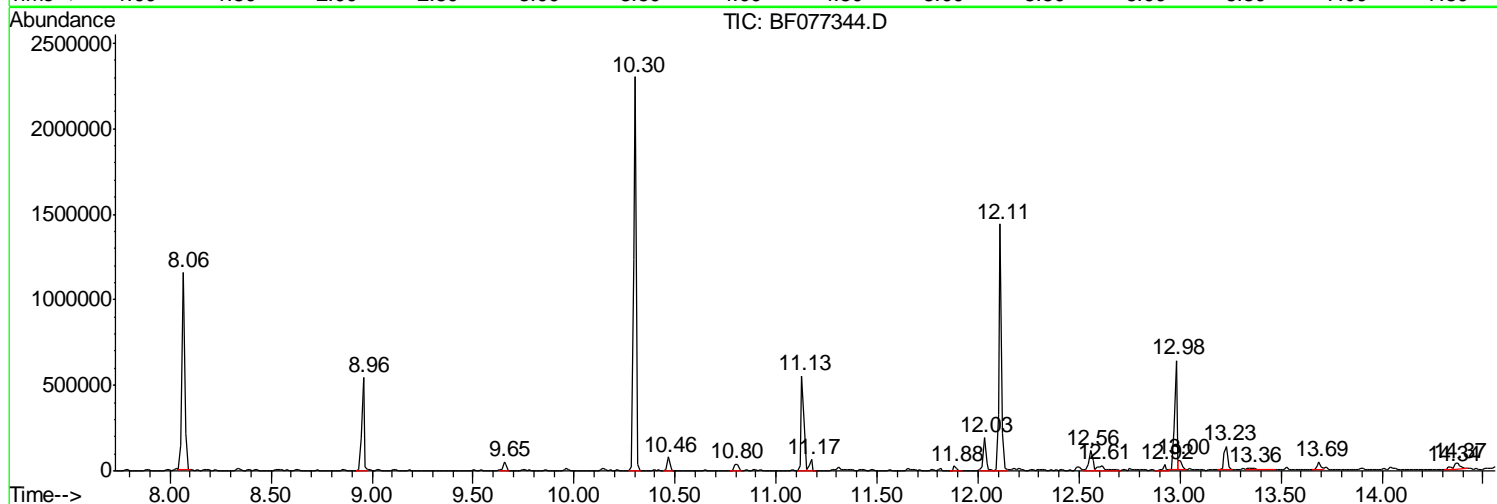
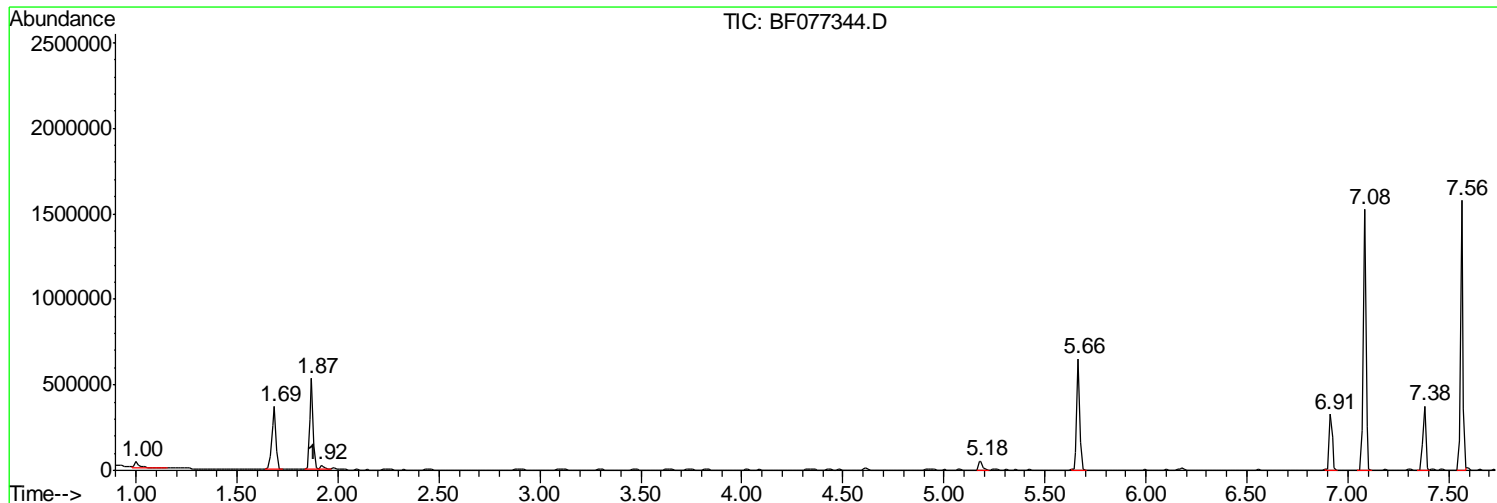
Sum of corrected areas: 17661520

Data Path : Z:\HPCHEM1\BNA_F\DATA\BF021715\
 Data File : BF077344.D
 Acq On : 18 Feb 2015 6:00
 Operator : TP/IZ
 Sample : G1302-05
 Misc : W
 ALS Vial : 24 Sample Multiplier: 1

Instrument :
 BNA_F
 ClientSampled :
 FYMW-09

Quant Method : Z:\HPCHEM1\BNA_F\METHODS\8270-BF021715.M
 Quant Title : ASP BNA STANDARDS FOR 5 POINT CALIBRATION

TIC Library : C:\DATABASE\NIST02.L
 TIC Integration Parameters: LSCINT.P



Data Path : Z:\HPCHEM1\BNA_F\DATA\BF021715\
 Data File : BF077344.D
 Acq On : 18 Feb 2015 6:00
 Operator : TP/IZ
 Sample : G1302-05
 Misc : W
 ALS Vial : 24 Sample Multiplier: 1

Instrument :
 BNA_F
 ClientSampleID :
 FYMW-09

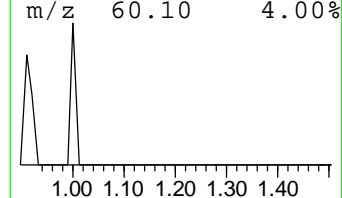
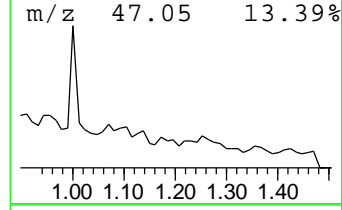
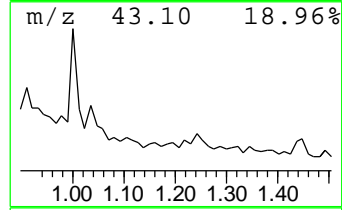
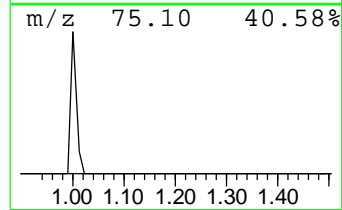
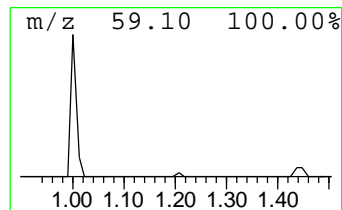
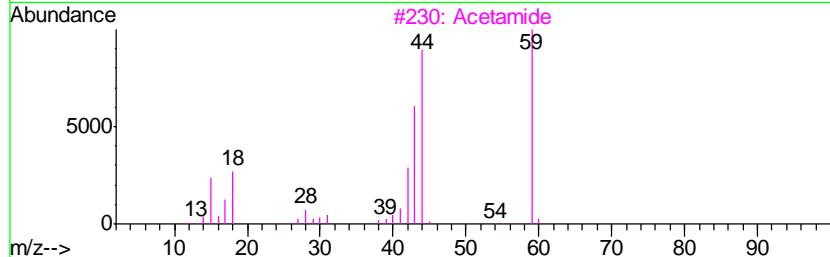
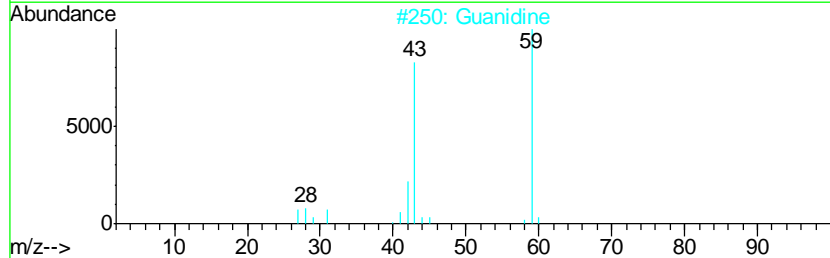
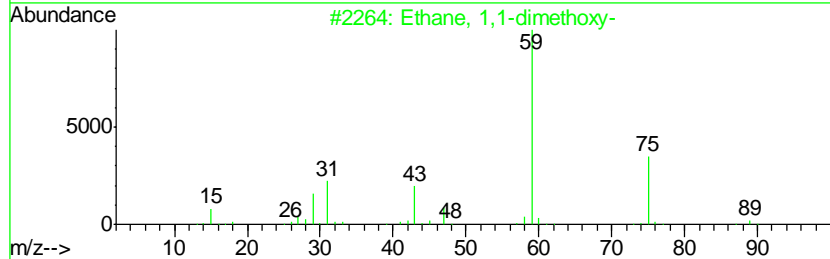
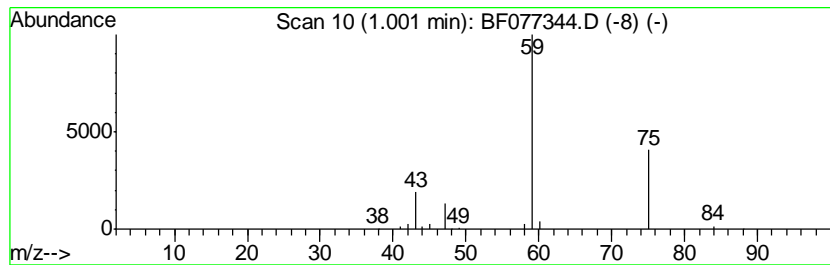
Quant Method : Z:\HPCHEM1\BNA_F\METHODS\8270-BF021715.M
 Quant Title : ASP BNA STANDARDS FOR 5 POINT CALIBRATION

TIC Library : C:\DATABASE\NIST02.L
 TIC Integration Parameters: LSCINT.P

 Peak Number 1 Ethane, 1,1-dimethoxy- Concentration Rank 10

R.T.	EstConc	Area	Relative to ISTD	R.T.
1.00	3.97 ng	73507	1,4-Dichlorobenzene-d4	7.38

Hit#	of	Tentative ID	MW	MolForm	CAS#	Qual
1	5	Ethane, 1,1-dimethoxy-	90	C4H10O2	000534-15-6	64
2		Guanidine	59	CH5N3	000113-00-8	7
3		Acetamide	59	C2H5NO	000060-35-5	5
4		Formamide, N-methyl-	59	C2H5NO	000123-39-7	4
5		1,2-Butanediol	90	C4H10O2	000584-03-2	4



Data Path : Z:\HPCHEM1\BNA_F\DATA\BF021715\
 Data File : BF077344.D
 Acq On : 18 Feb 2015 6:00
 Operator : TP/IZ
 Sample : G1302-05
 Misc : W
 ALS Vial : 24 Sample Multiplier: 1

Instrument :
 BNA_F
 ClientSampleID :
 FYMW-09

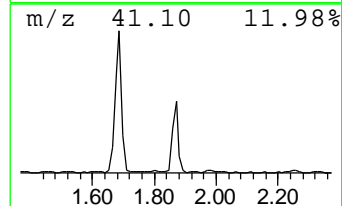
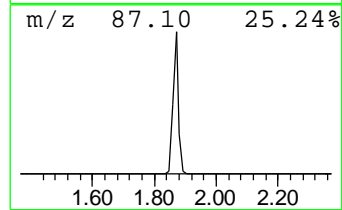
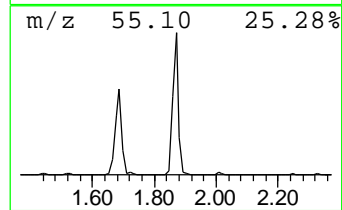
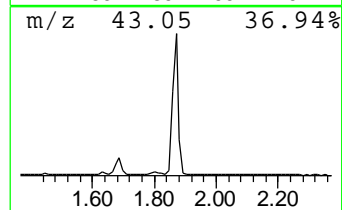
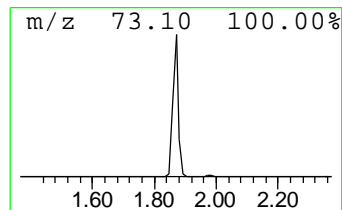
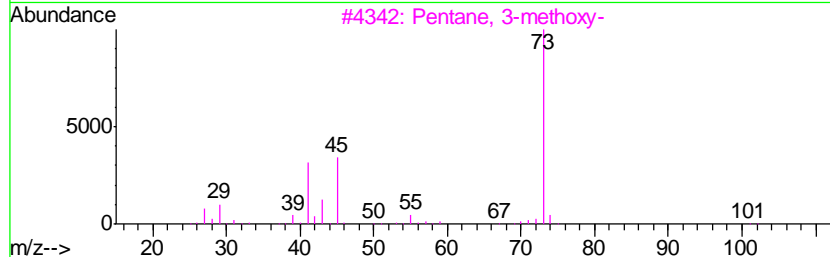
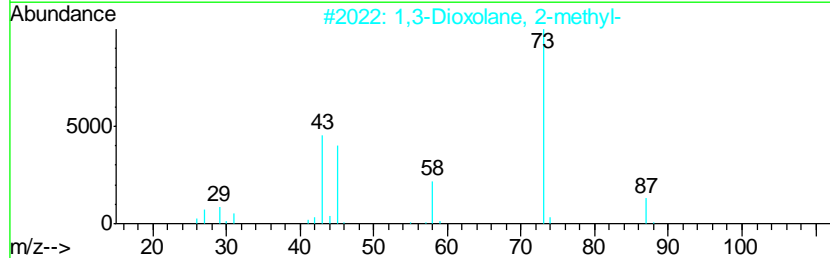
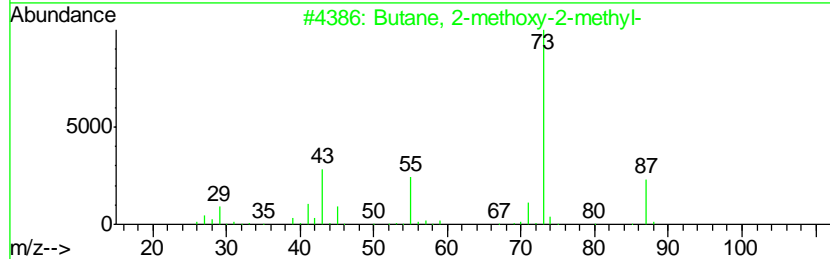
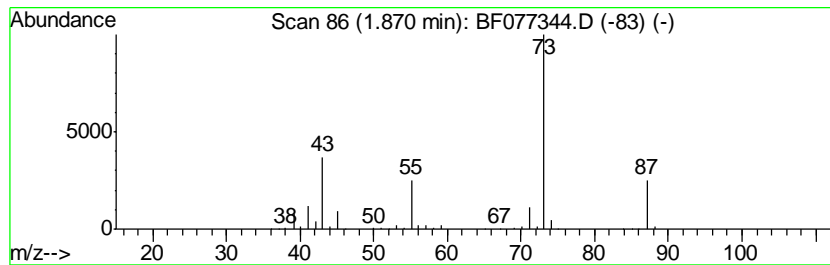
Quant Method : Z:\HPCHEM1\BNA_F\METHODS\8270-BF021715.M
 Quant Title : ASP BNA STANDARDS FOR 5 POINT CALIBRATION

TIC Library : C:\DATABASE\NIST02.L
 TIC Integration Parameters: LSCINT.P

 Peak Number 3 Butane, 2-methoxy-2-methyl- Concentration Rank 3

R.T.	EstConc	Area	Relative to ISTD	R.T.
1.87	36.30 ng	672311	1,4-Dichlorobenzene-d4	7.38

Hit#	of	Tentative ID	MW	MolForm	CAS#	Qual
1	5	Butane, 2-methoxy-2-methyl-	102	C6H14O	000994-05-8	78
2		1,3-Dioxolane, 2-methyl-	88	C4H8O2	000497-26-7	37
3		Pentane, 3-methoxy-	102	C6H14O	036839-67-5	23
4		Silane, tetramethyl-	88	C4H12Si	000075-76-3	17
5		N-Ethylformamide	73	C3H7NO	000627-45-2	9



Data Path : Z:\HPCHEM1\BNA_F\DATA\BF021715\
 Data File : BF077344.D
 Acq On : 18 Feb 2015 6:00
 Operator : TP/IZ
 Sample : G1302-05
 Misc : W
 ALS Vial : 24 Sample Multiplier: 1

Instrument :
 BNA_F
 ClientSampleID :
 FYMW-09

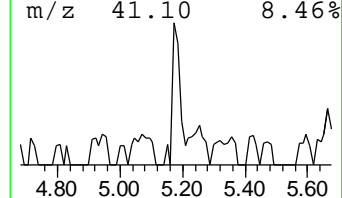
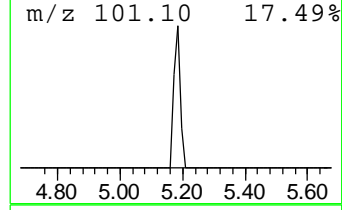
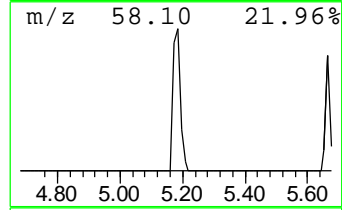
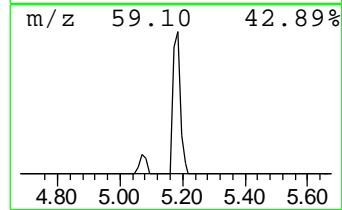
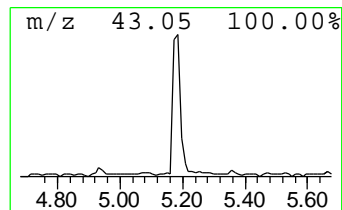
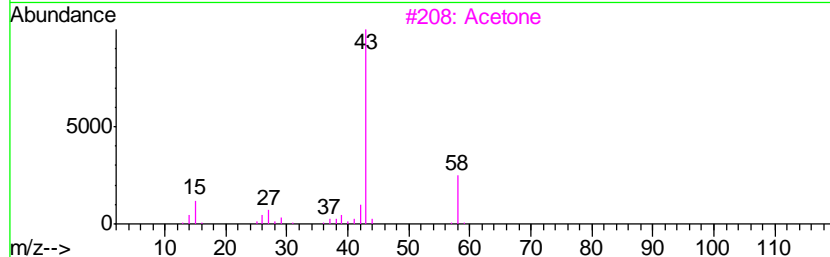
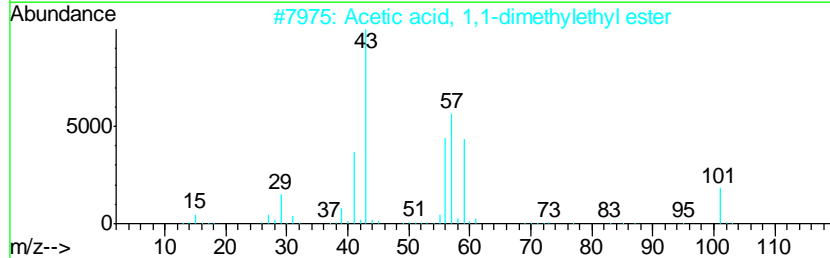
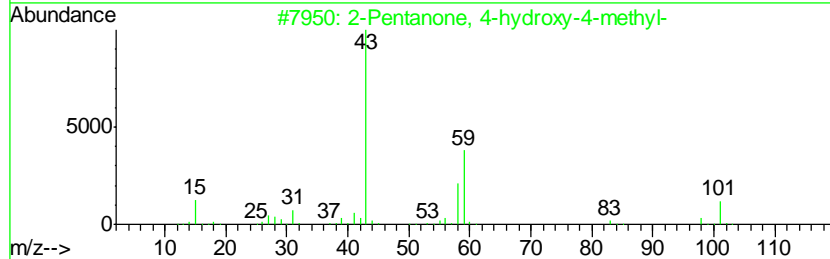
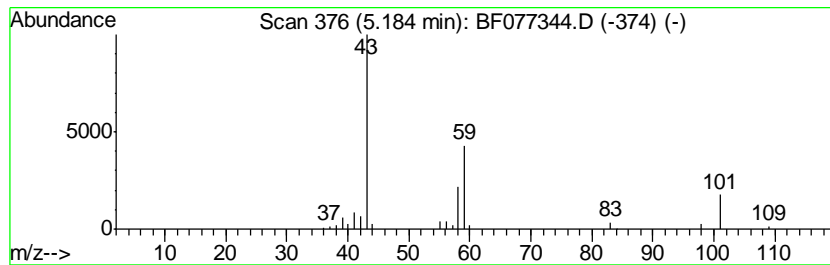
Quant Method : Z:\HPCHEM1\BNA_F\METHODS\8270-BF021715.M
 Quant Title : ASP BNA STANDARDS FOR 5 POINT CALIBRATION

TIC Library : C:\DATABASE\NIST02.L
 TIC Integration Parameters: LSCINT.P

 Peak Number 4 2-Pentanone, 4-hydroxy-4-me... Concentration Rank 8

R.T.	EstConc	Area	Relative to ISTD	R.T.
5.18	4.46 ng	82531	1,4-Dichlorobenzene-d4	7.38

Hit#	of	Tentative ID	MW	MolForm	CAS#	Qual
1	5	2-Pentanone, 4-hydroxy-4-methyl-	116	C6H12O2	000123-42-2	78
2		Acetic acid, 1,1-dimethylethyl e...	116	C6H12O2	000540-88-5	36
3		Acetone	58	C3H6O	000067-64-1	9
4		2-Propyn-1-ol, acetate	98	C5H6O2	000627-09-8	9
5		4-Penten-2-one, 4-methyl-	98	C6H10O	003744-02-3	9



Data Path : Z:\HPCHEM1\BNA_F\DATA\BF021715\
 Data File : BF077344.D
 Acq On : 18 Feb 2015 6:00
 Operator : TP/IZ
 Sample : G1302-05
 Misc : W
 ALS Vial : 24 Sample Multiplier: 1

Instrument :
 BNA_F
 ClientSampled :
 FYMW-09

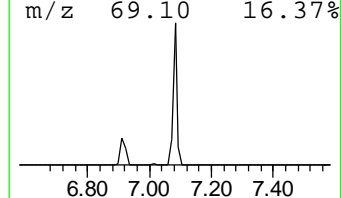
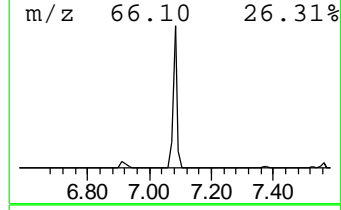
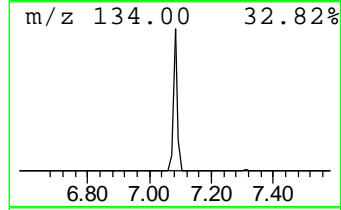
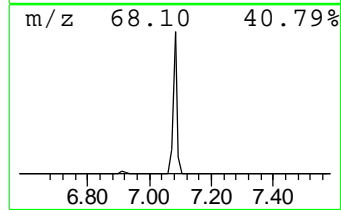
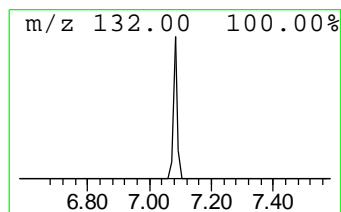
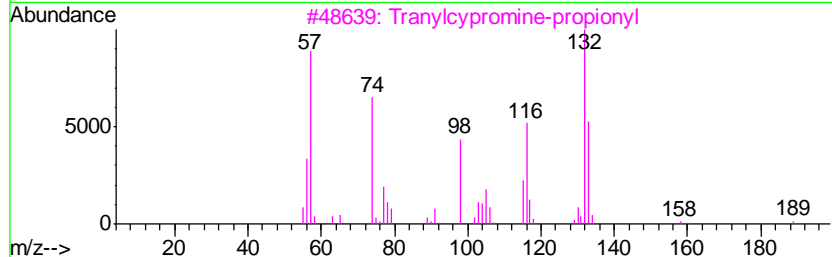
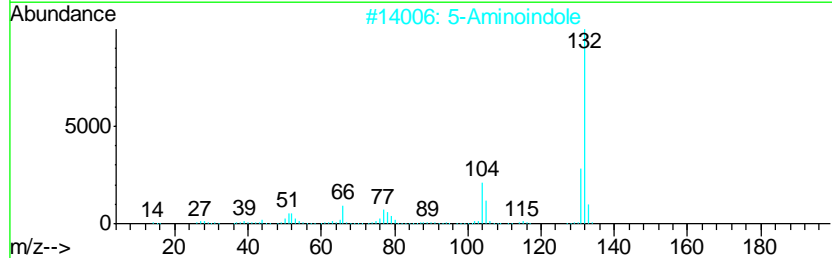
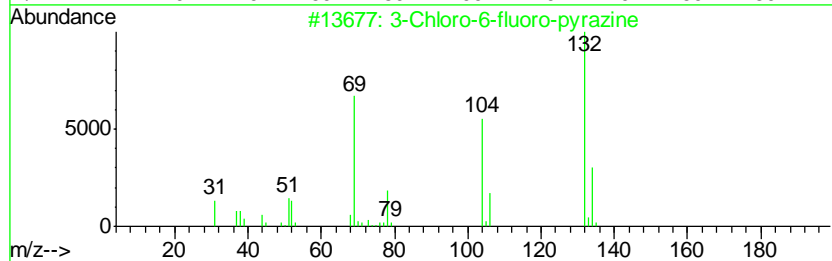
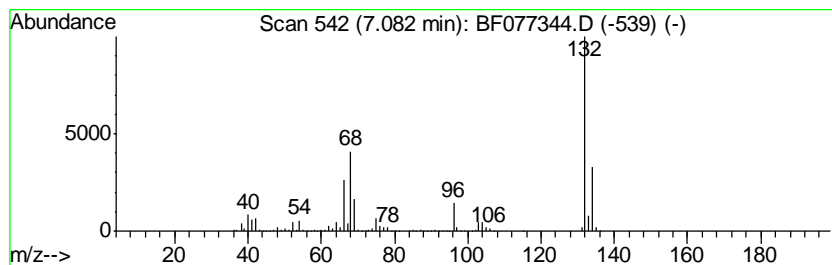
Quant Method : Z:\HPCHEM1\BNA_F\METHODS\8270-BF021715.M
 Quant Title : ASP BNA STANDARDS FOR 5 POINT CALIBRATION

TIC Library : C:\DATABASE\NIST02.L
 TIC Integration Parameters: LSCINT.P

 Peak Number 5 unknown7.08 Concentration Rank 2

R.T.	EstConc	Area	Relative to ISTD	R.T.
7.08	74.38 ng	1377420	1,4-Dichlorobenzene-d4	7.38

Hit#	of	Tentative ID	MW	MolForm	CAS#	Qual
1	5	3-Chloro-6-fluoro-pyrazine	132	C4H2ClFN2	1000146-10-7	27
2		5-Aminoindole	132	C8H8N2	005192-03-0	12
3		Tranylcypropine-propionyl	189	C12H15NO	1000123-86-3	10
4		Amphetaminil	250	C17H18N2	017590-01-1	10
5		Bicyclo[4.2.0]octa-1,3,5-triene,...	132	C10H12	028749-81-7	9



Data Path : Z:\HPCHEM1\BNA_F\DATA\BF021715\
 Data File : BF077344.D
 Acq On : 18 Feb 2015 6:00
 Operator : TP/IZ
 Sample : G1302-05
 Misc : W
 ALS Vial : 24 Sample Multiplier: 1

Instrument :
 BNA_F
 ClientSampleID :
 FYMW-09

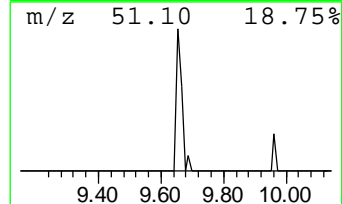
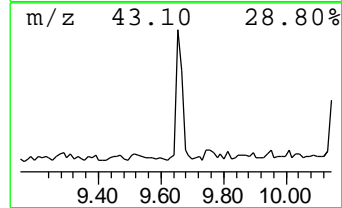
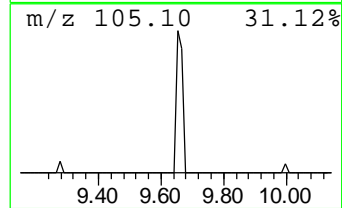
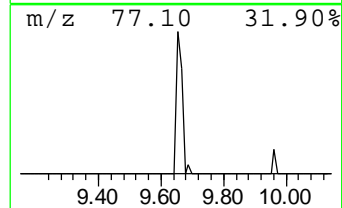
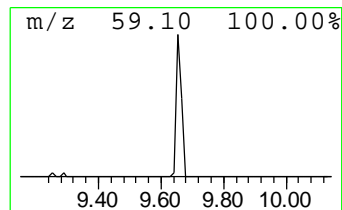
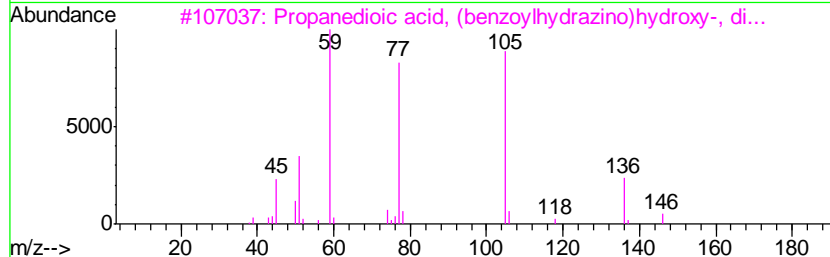
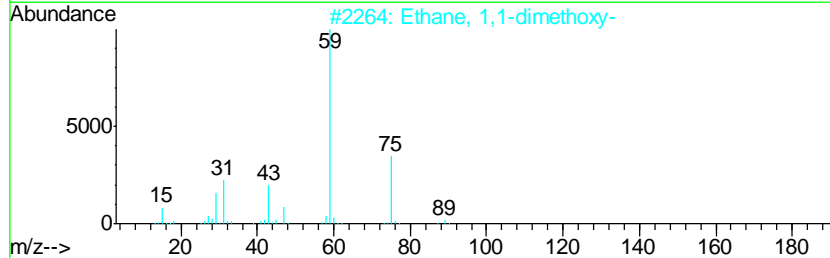
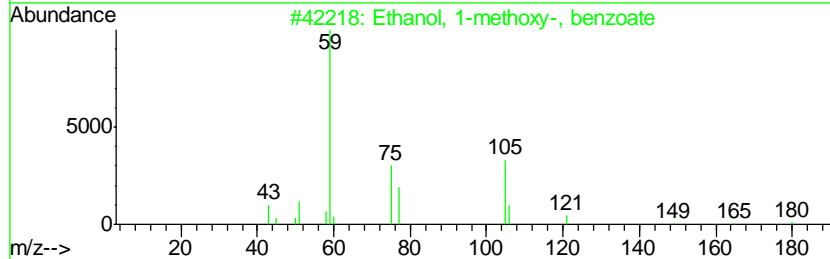
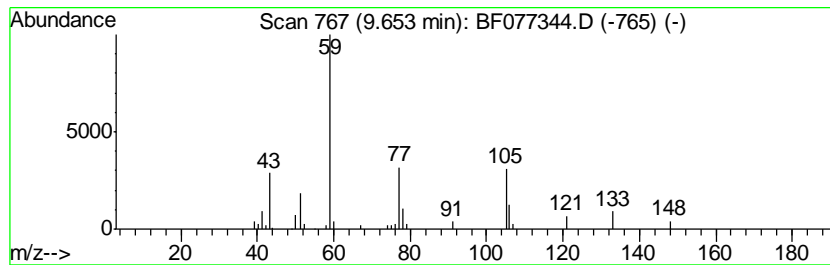
Quant Method : Z:\HPCHEM1\BNA_F\METHODS\8270-BF021715.M
 Quant Title : ASP BNA STANDARDS FOR 5 POINT CALIBRATION

TIC Library : C:\DATABASE\NIST02.L
 TIC Integration Parameters: LSCINT.P

 Peak Number 7 Ethanol, 1-methoxy-, benzoate Concentration Rank 13

R.T.	EstConc	Area	Relative to ISTD	R.T.
9.65	2.24 ng	58246	Naphthalene-d8	8.96

Hit#	of	Tentative ID	MW	MolForm	CAS#	Qual
1	5	Ethanol, 1-methoxy-, benzoate	180	C10H12O3	051835-44-0	59
2		Ethane, 1,1-dimethoxy-	90	C4H10O2	000534-15-6	9
3		Propanedioic acid, (benzoylhydra...	282	C12H14N2O6	1000142-99-9	9
4		Acetic acid, chloro-, methyl ester	108	C3H5ClO2	000096-34-4	9
5		Guanidine	59	CH5N3	000113-00-8	7



Data Path : Z:\HPCHEM1\BNA_F\DATA\BF021715\
 Data File : BF077344.D
 Acq On : 18 Feb 2015 6:00
 Operator : TP/IZ
 Sample : G1302-05
 Misc : W
 ALS Vial : 24 Sample Multiplier: 1

Instrument :
 BNA_F
 ClientSampled :
 FYMW-09

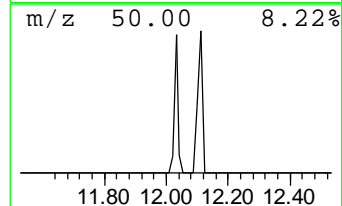
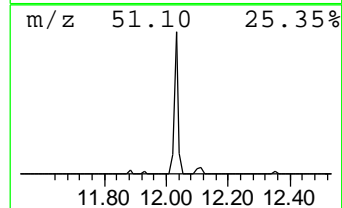
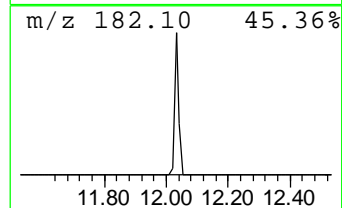
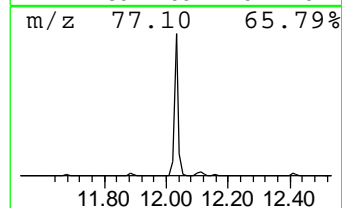
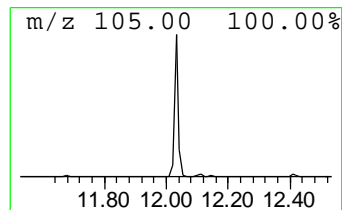
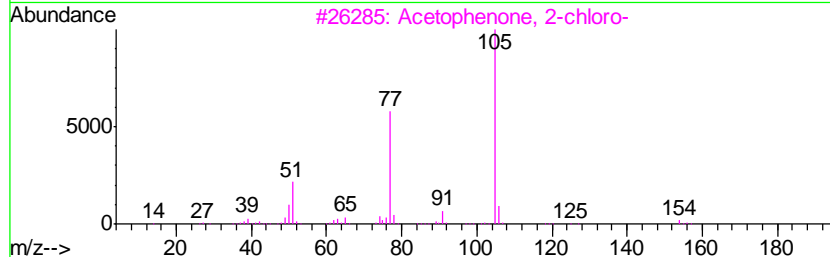
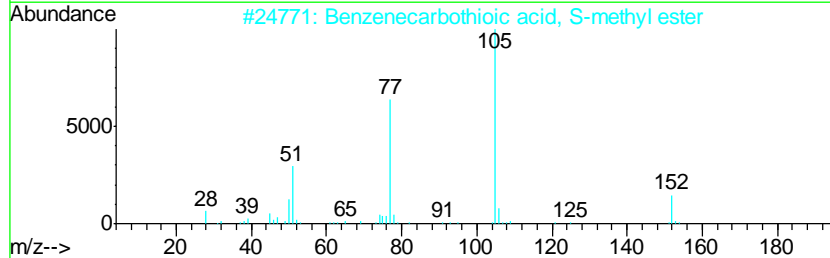
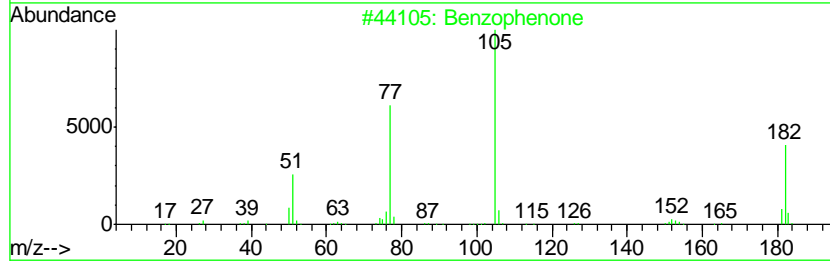
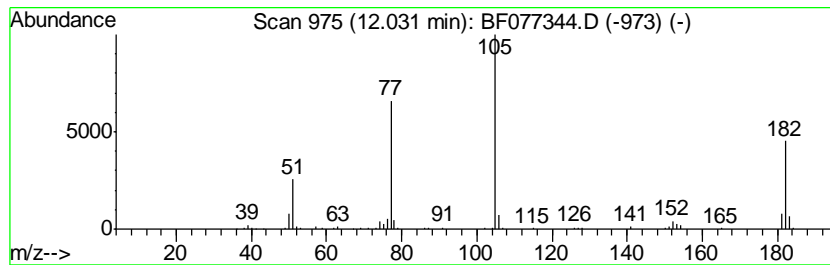
Quant Method : Z:\HPCHEM1\BNA_F\METHODS\8270-BF021715.M
 Quant Title : ASP BNA STANDARDS FOR 5 POINT CALIBRATION

TIC Library : C:\DATABASE\NIST02.L
 TIC Integration Parameters: LSCINT.P

 Peak Number 9 Benzophenone Concentration Rank 5

R.T.	EstConc	Area	Relative to ISTD	R.T.
12.03	6.22 ng	185579	Acenaphthene-d10	11.13

Hit#	of	Tentative ID	MW	MolForm	CAS#	Qual
1	5	Benzophenone	182	C13H10O	000119-61-9	96
2		Benzenecarbothioic acid, S-methy...	152	C8H8OS	005925-68-8	50
3		Acetophenone, 2-chloro-	154	C8H7ClO	000532-27-4	49
4		Benzoylformic acid	150	C8H6O3	000611-73-4	47
5		Benzenepropanenitrile, .beta.-oxo-	145	C9H7NO	000614-16-4	47



Data Path : Z:\HPCHEM1\BNA_F\DATA\BF021715\
 Data File : BF077344.D
 Acq On : 18 Feb 2015 6:00
 Operator : TP/IZ
 Sample : G1302-05
 Misc : W
 ALS Vial : 24 Sample Multiplier: 1

Instrument :
 BNA_F
 ClientSampleID :
 FYMW-09

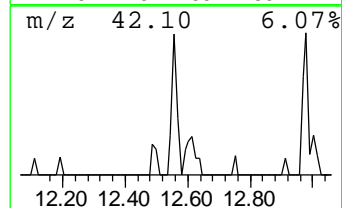
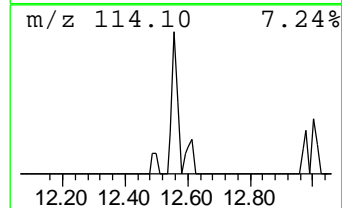
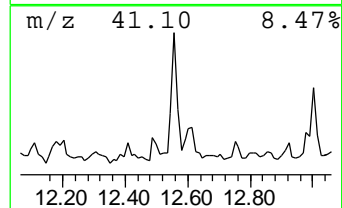
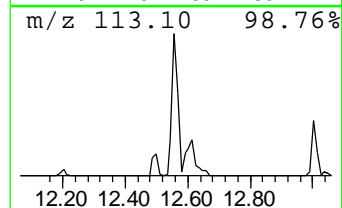
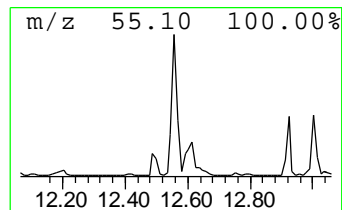
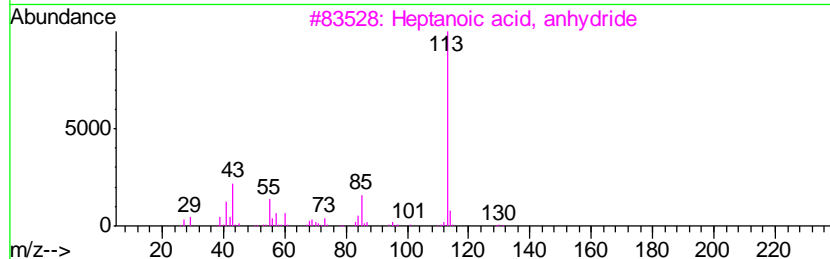
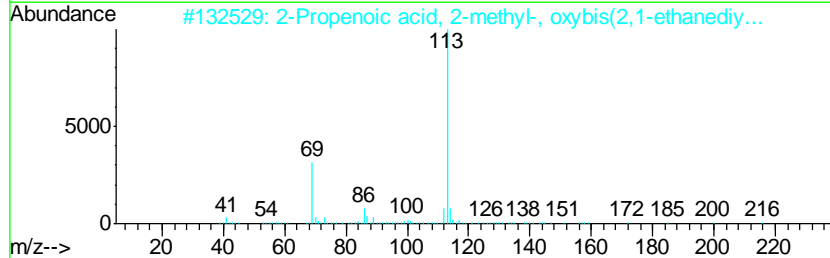
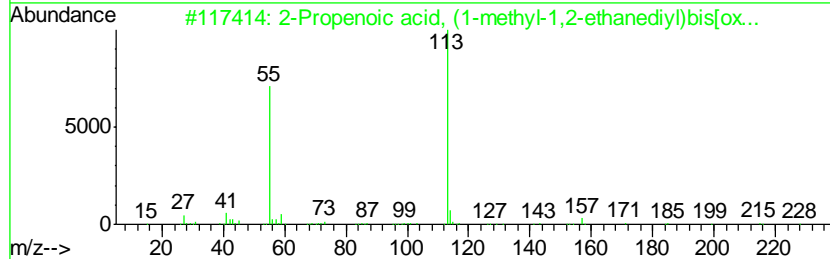
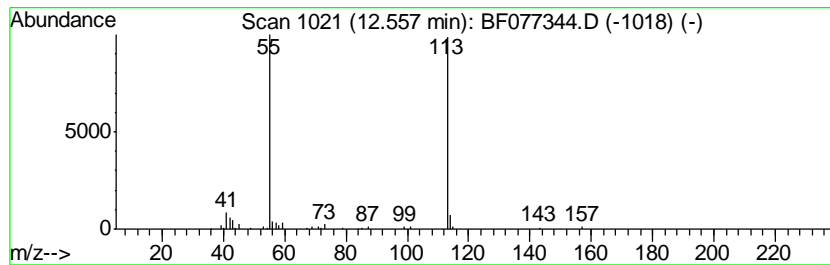
Quant Method : Z:\HPCHEM1\BNA_F\METHODS\8270-BF021715.M
 Quant Title : ASP BNA STANDARDS FOR 5 POINT CALIBRATION

TIC Library : C:\DATABASE\NIST02.L
 TIC Integration Parameters: LSCINT.P

 Peak Number 10 2-Propenoic acid, (1-methyl... Concentration Rank 7

R.T.	EstConc	Area	Relative to ISTD	R.T.
12.56	4.50 ng	143033	Phenanthrene-d10	12.98

Hit#	of	Tentative ID	MW	MolForm	CAS#	Qual
1	5	2-Propenoic acid, (1-methyl-1,2-...	300	C15H24O6	042978-66-5	64
2		2-Propenoic acid, 2-methyl-, oxy...	330	C16H26O7	000109-17-1	36
3		Heptanoic acid, anhydride	242	C14H26O3	000626-27-7	17
4		Propanedioic acid, 2-propenyl-, ...	172	C8H12O4	040637-56-7	9
5		Piperidine-2,5-dione	113	C5H7NO2	052065-78-8	9



Data Path : Z:\HPCHEM1\BNA_F\DATA\BF021715\
 Data File : BF077344.D
 Acq On : 18 Feb 2015 6:00
 Operator : TP/IZ
 Sample : G1302-05
 Misc : W
 ALS Vial : 24 Sample Multiplier: 1

Instrument :
 BNA_F
 ClientSampleID :
 FYMW-09

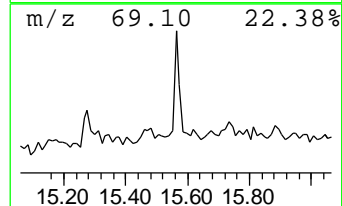
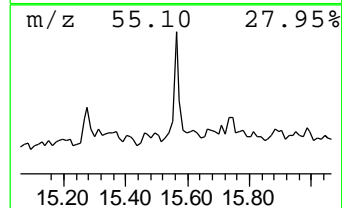
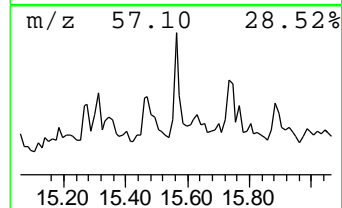
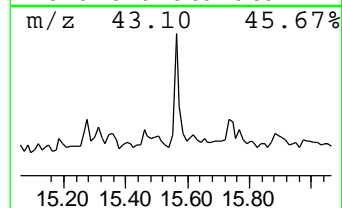
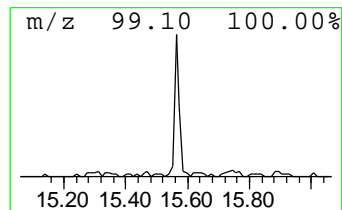
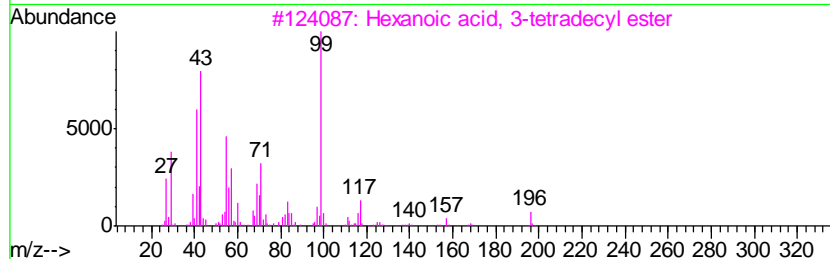
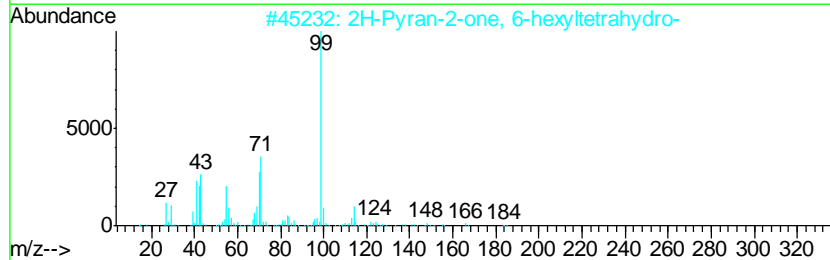
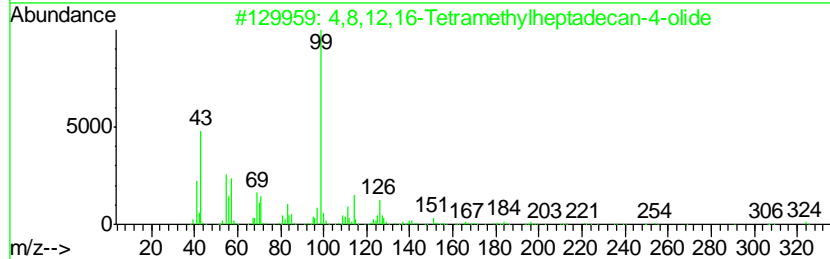
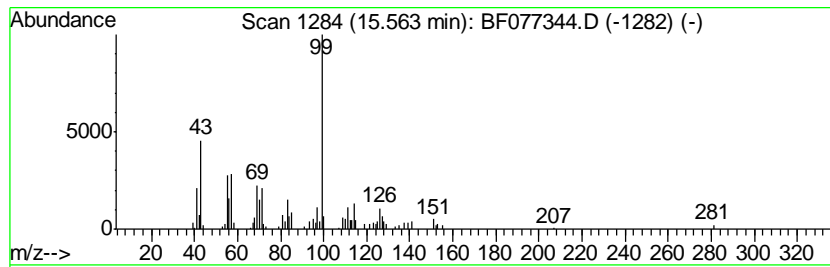
Quant Method : Z:\HPCHEM1\BNA_F\METHODS\8270-BF021715.M
 Quant Title : ASP BNA STANDARDS FOR 5 POINT CALIBRATION

TIC Library : C:\DATABASE\NIST02.L
 TIC Integration Parameters: LSCINT.P

 Peak Number 14 4,8,12,16-Tetramethylheptad... Concentration Rank 11

R.T.	EstConc	Area	Relative to ISTD	R.T.
15.56	2.63 ng	86298	Chrysene-d12	16.27

Hit#	of	Tentative ID	MW	MolForm	CAS#	Qual
1	5	4,8,12,16-Tetramethylheptadecan-...	324	C21H40O2	096168-15-9	74
2		2H-Pyran-2-one, 6-hexyltetrahydro-	184	C11H20O2	000710-04-3	53
3		Hexanoic acid, 3-tetradecyl ester	312	C20H40O2	1000279-29-7	53
4		Hexanoic acid, 5-tridecyl ester	298	C19H38O2	1000279-29-4	53
5		trans-4-Hydroxy-3-methylundecano...	198	C12H22O2	148806-10-4	53



Data Path : Z:\HPCHEM1\BNA_F\DATA\BF021715\
 Data File : BF077344.D
 Acq On : 18 Feb 2015 6:00
 Operator : TP/IZ
 Sample : G1302-05
 Misc : W
 ALS Vial : 24 Sample Multiplier: 1

Instrument :
 BNA_F
 ClientSampleID :
 FYMW-09

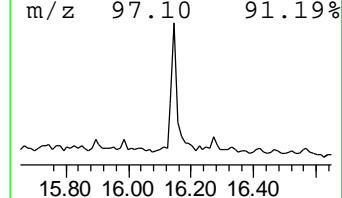
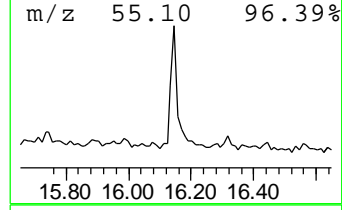
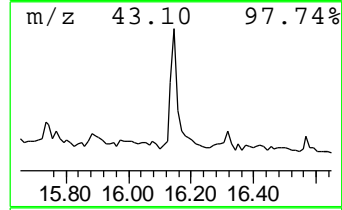
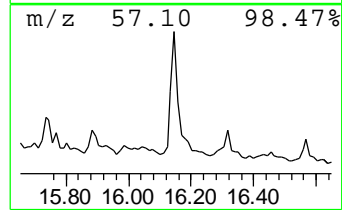
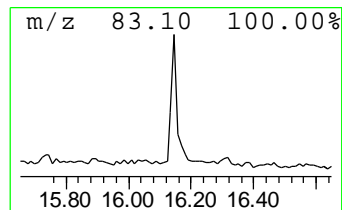
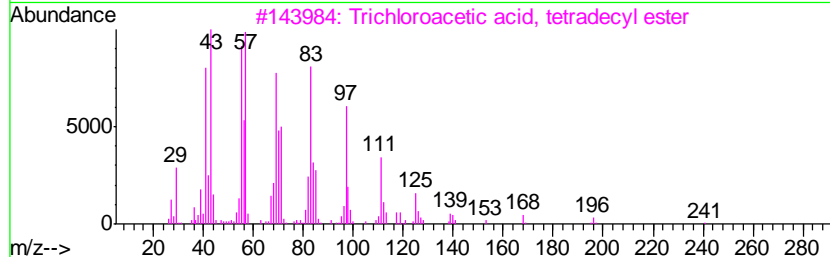
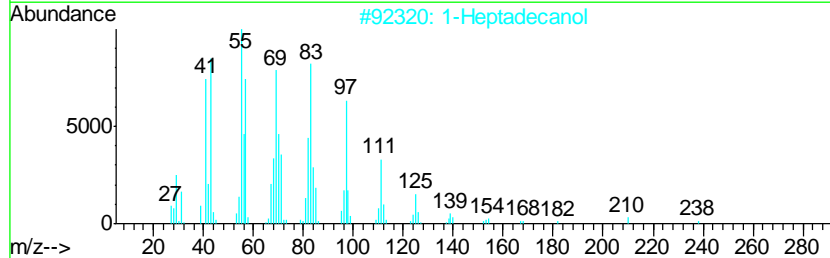
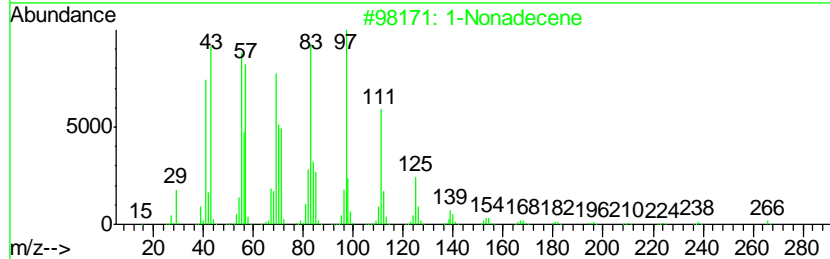
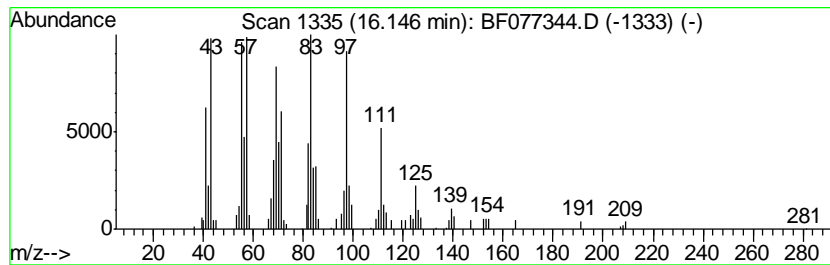
Quant Method : Z:\HPCHEM1\BNA_F\METHODS\8270-BF021715.M
 Quant Title : ASP BNA STANDARDS FOR 5 POINT CALIBRATION

TIC Library : C:\DATABASE\NIST02.L
 TIC Integration Parameters: LSCINT.P

 Peak Number 15 1-Nonadecene Concentration Rank 9

R.T.	EstConc	Area	Relative to ISTD	R.T.
16.15	4.05 ng	132791	Chrysene-d12	16.27

Hit#	of	Tentative ID	MW	MolForm	CAS#	Qual
1	5	1-Nonadecene	266	C19H38	018435-45-5	94
2		1-Heptadecanol	256	C17H36O	001454-85-9	90
3		Trichloroacetic acid, tetradecyl...	358	C16H29Cl3O2	074339-52-9	90
4		3-Chloropropionic acid, heptadec...	346	C20H39ClO2	1000283-05-1	83
5		11-Tricosene	322	C23H46	052078-56-5	83



Data Path : Z:\HPCHEM1\BNA_F\DATA\BF021715\
Data File : BF077344.D
Acq On : 18 Feb 2015 6:00
Operator : TP/IZ
Sample : G1302-05
Misc : W
ALS Vial : 24 Sample Multiplier: 1

Instrument :
BNA_F
ClientSampleId :
FYMW-09

Quant Method : Z:\HPCHEM1\BNA_F\METHODS\8270-BF021715.M
Quant Title : ASP BNA STANDARDS FOR 5 POINT CALIBRATION

TIC Library : C:\DATABASE\NIST02.L
TIC Integration Parameters: LSCINT.P

TIC Top Hit name	RT	EstConc	Units	Response	--Internal Standard--			
					#	RT	Resp	Conc
Ethane, 1,1-dimet...	1.00	4.0	ng	73507	1	7.38	370396	20.0
Butane, 2-methoxy...	1.87	36.3	ng	672311	1	7.38	370396	20.0
2-Pentanone, 4-hy...	5.18	4.5	ng	82531	1	7.38	370396	20.0
unknown7.08	7.08	74.4	ng	1377420	1	7.38	370396	20.0
Ethanol, 1-methox...	9.65	2.2	ng	58246	2	8.96	520747	20.0
Benzophenone	12.03	6.2	ng	185579	3	11.13	597062	20.0
2-Propenoic acid,...	12.56	4.5	ng	143033	4	12.98	636037	20.0
4,8,12,16-Tetrame...	15.56	2.6	ng	86298	5	16.27	655043	20.0
1-Nonadecene	16.15	4.0	ng	132791	5	16.27	655043	20.0