

Data Path : Z:\HPCHEM1\BNA F\DATA\BF022118\
 Data File : BF103138.D
 Acq On : 21 Feb 2018 16:05
 Operator : SJ/JU
 Sample : J1623-17
 Misc :
 ALS Vial : 13 Sample Multiplier: 1

Instrument :
 BNA_F
 ClientSampled :
 TP-9-10

Integration Parameters: rteint.p
 Integrator: RTE
 Smoothing : ON
 Sampling : 1
 Start Thrs: 0.2
 Stop Thrs : 0

Filtering: 5
 Min Area: 3 % of largest Peak
 Max Peaks: 100
 Peak Location: TOP

If leading or trailing edge < 100 prefer < Baseline drop else tangent >
 Peak separation: 5

Method : Z:\HPCHEM1\BNA F\METHODS\8270-BF020318.M
 Title : ASP BNA STANDARDS FOR 5 POINT CALIBRATION

Signal : TIC

peak #	R.T. min	first scan	max scan	last scan	PK TY	peak height	corr. area	corr. % max.	% of total
1	2.169	7	14	22	rVB	1137003	1589645	38.06%	3.594%
2	5.081	505	509	512	rBV	48751	51721	1.24%	0.117%
3	5.122	512	516	525	rVB	95190	137694	3.30%	0.311%
4	5.504	576	581	584	rBV	3963651	4177161	100.00%	9.444%
5	6.516	747	753	766	rBV	3438637	4119432	98.62%	9.314%
6	6.651	771	776	779	rBV	4077349	4035736	96.61%	9.125%
7	6.875	811	814	818	rBV	1231027	1007655	24.12%	2.278%
8	7.033	837	841	844	rBV	3409863	3110008	74.45%	7.032%
9	7.445	905	911	914	rBV	2623983	2718869	65.09%	6.147%
10	8.157	1029	1032	1046	rBV	1369534	1388860	33.25%	3.140%
11	9.233	1210	1215	1218	rBV	4014515	3755454	89.90%	8.491%
12	9.304	1224	1227	1230	rVB	54716	44260	1.06%	0.100%
13	9.627	1276	1282	1289	rVB	193774	219965	5.27%	0.497%
14	9.774	1304	1307	1313	rBV	62079	66305	1.59%	0.150%
15	9.833	1314	1317	1320	rVB	158407	121607	2.91%	0.275%
16	9.916	1327	1331	1334	rBV	1521102	1323638	31.69%	2.993%
17	9.945	1334	1336	1342	rVB	102203	98092	2.35%	0.222%
18	10.121	1363	1366	1369	rVB	55786	47049	1.13%	0.106%
19	10.333	1395	1402	1405	rBV	215195	182900	4.38%	0.414%
20	10.463	1421	1424	1428	rVB	101094	87358	2.09%	0.198%
21	10.551	1434	1439	1442	rBV2	59464	73494	1.76%	0.166%
22	10.710	1461	1466	1480	rBV	2080130	2196723	52.59%	4.967%
23	10.804	1480	1482	1492	rVB	152832	193489	4.63%	0.437%
24	11.016	1512	1518	1520	rBV6	28334	48358	1.16%	0.109%
25	11.210	1548	1551	1555	rBV	55197	51900	1.24%	0.117%
26	11.251	1555	1558	1561	rVV2	69504	70349	1.68%	0.159%
27	11.304	1565	1567	1570	rVB	47951	44865	1.07%	0.101%
28	11.404	1580	1584	1586	rBV	1237084	1121665	26.85%	2.536%
29	11.427	1586	1588	1592	rVV	875897	722173	17.29%	1.633%
30	11.480	1594	1597	1600	rVB	190138	160417	3.84%	0.363%
31	11.639	1619	1624	1628	rBV2	107381	130956	3.14%	0.296%
32	11.904	1666	1669	1671	rBV	98926	108420	2.60%	0.245%
33	11.933	1672	1674	1677	rVV	138588	118226	2.83%	0.267%
34	11.980	1680	1682	1685	rVB	51560	42493	1.02%	0.096%

Data Path : Z:\HPCHEM1\BNA F\DATA\BF022118\
 Data File : BF103138.D
 Acq On : 21 Feb 2018 16:05
 Operator : SJ/JU
 Sample : J1623-17
 Misc :
 ALS Vial : 13 Sample Multiplier: 1

Instrument :
 BNA_F
 ClientSampleId :
 TP-9-10

Integration Parameters: rteint.p
 Integrator: RTE
 Smoothing : ON
 Sampling : 1
 Start Thrs: 0.2
 Stop Thrs : 0

Filtering: 5
 Min Area: 3 % of largest Peak
 Max Peaks: 100
 Peak Location: TOP

If leading or trailing edge < 100 prefer < Baseline drop else tangent >
 Peak separation: 5

Method : Z:\HPCHEM1\BNA F\METHODS\8270-BF020318.M
 Title : ASP BNA STANDARDS FOR 5 POINT CALIBRATION

35	12.021	1685	1689	1691	rBV2	150777	178261	4.27%	0.403%
36	12.198	1717	1719	1722	rVB	61635	49386	1.18%	0.112%
37	12.233	1722	1725	1729	rVB3	71822	80354	1.92%	0.182%
38	12.457	1759	1763	1765	rBV	54318	68047	1.63%	0.154%
39	12.480	1765	1767	1771	rVV4	45525	74466	1.78%	0.168%
40	12.545	1774	1778	1782	rBV2	59734	65200	1.56%	0.147%
41	12.621	1787	1791	1794	rBV	1122784	977776	23.41%	2.211%
42	12.851	1823	1830	1836	rBV	1082729	1158551	27.74%	2.619%
43	12.898	1836	1838	1841	rVB2	46318	43830	1.05%	0.099%
44	12.986	1847	1853	1857	rBV	2442644	2607798	62.43%	5.896%
45	13.068	1862	1867	1871	rBV3	72576	121724	2.91%	0.275%
46	13.151	1878	1881	1883	rBV3	74982	94367	2.26%	0.213%
47	13.174	1883	1885	1888	rVB2	122594	119347	2.86%	0.270%
48	13.245	1894	1897	1899	rBV	64600	63694	1.52%	0.144%
49	13.280	1899	1903	1906	rVV3	92539	116473	2.79%	0.263%
50	13.404	1922	1924	1930	rBV2	54174	62343	1.49%	0.141%
51	13.486	1936	1938	1943	rVB6	42440	46421	1.11%	0.105%
52	13.686	1969	1972	1976	rVB	112690	99220	2.38%	0.224%
53	13.798	1987	1991	1993	rBV2	109044	129421	3.10%	0.293%
54	13.821	1993	1995	1998	rVB	63887	55074	1.32%	0.125%
55	13.868	1998	2003	2006	rBV4	330843	404765	9.69%	0.915%
56	14.051	2029	2034	2036	rBV2	1038733	1374895	32.91%	3.109%
57	14.074	2036	2038	2045	rVB	506272	470973	11.27%	1.065%
58	14.198	2056	2059	2061	rBV2	51146	53885	1.29%	0.122%
59	14.439	2098	2100	2103	rVB	109771	88670	2.12%	0.200%
60	15.104	2209	2213	2217	rBV	370567	602573	14.43%	1.362%
61	15.215	2230	2232	2240	rVB	79388	101863	2.44%	0.230%
62	15.415	2263	2266	2272	rVB	214014	267171	6.40%	0.604%
63	15.480	2273	2277	2282	rVB	297979	362914	8.69%	0.821%
64	15.545	2283	2288	2292	rBV	540265	726680	17.40%	1.643%
65	17.056	2540	2545	2553	rBV2	99171	196409	4.70%	0.444%

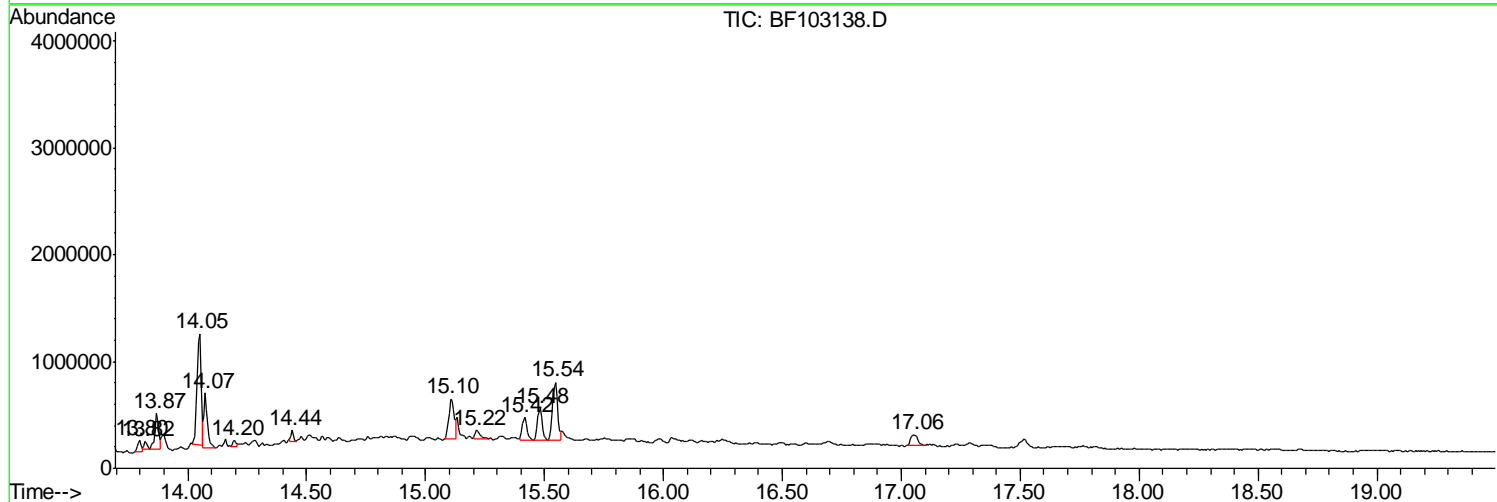
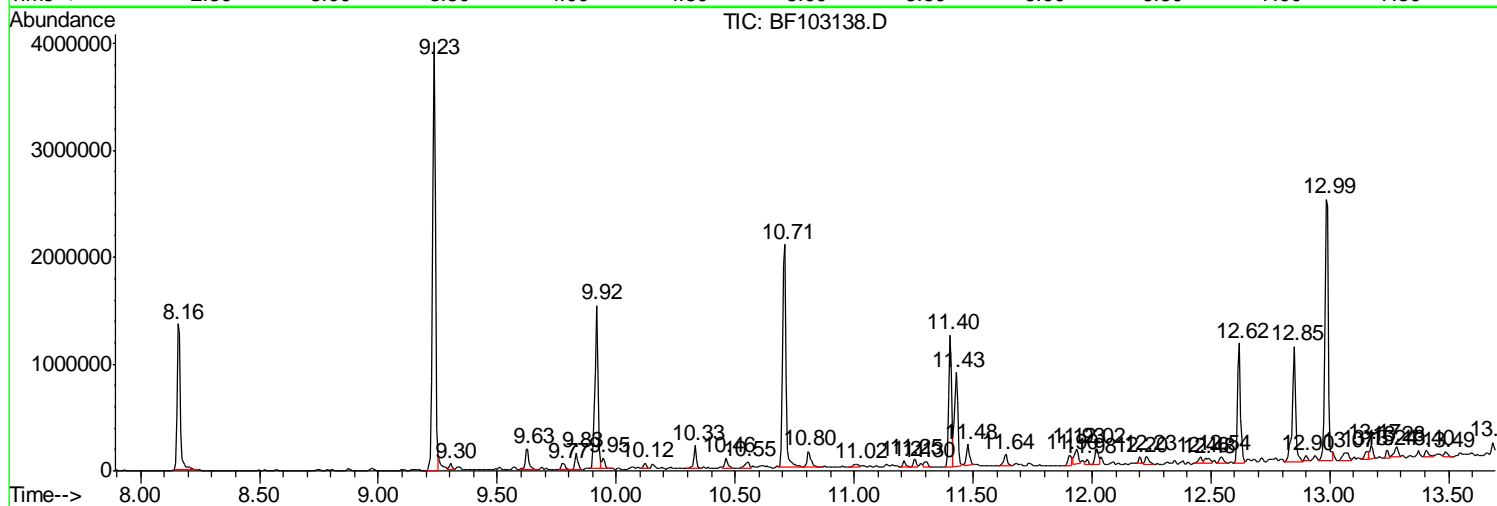
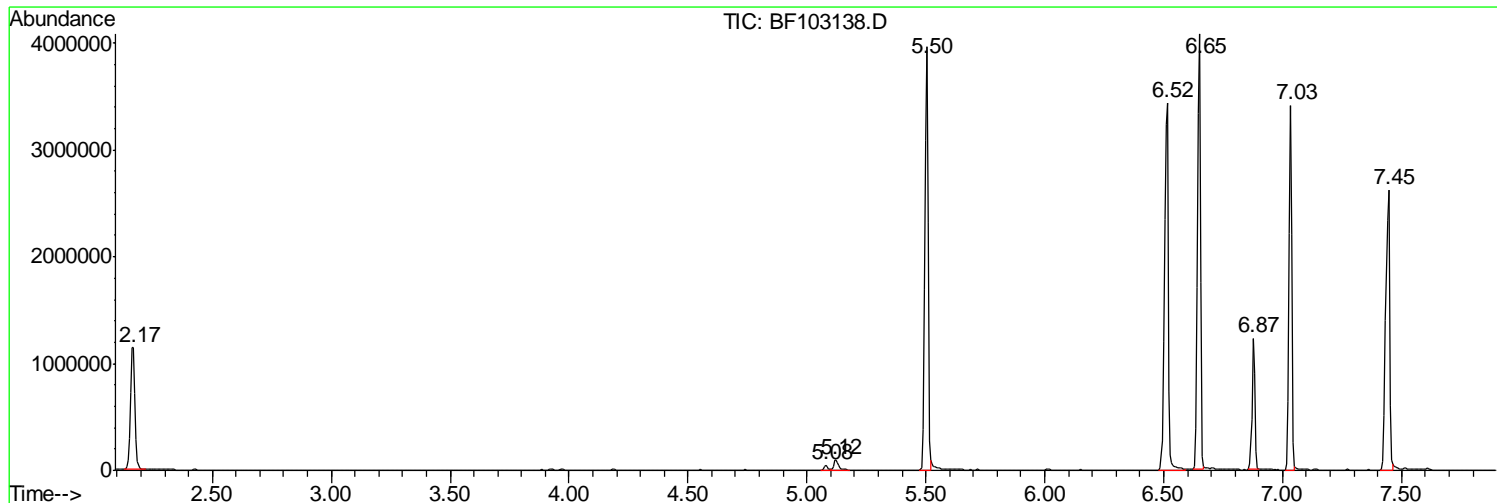
Sum of corrected areas: 44229488

Data Path : Z:\HPCHEM1\BNA F\DATA\BF022118\
 Data File : BF103138.D
 Acq On : 21 Feb 2018 16:05
 Operator : SJ/JU
 Sample : J1623-17
 Misc :
 ALS Vial : 13 Sample Multiplier: 1

Instrument :
 BNA_F
 ClientSampled :
 TP-9-10

Quant Method : Z:\HPCHEM1\BNA F\METHODS\8270-BF020318.M
 Quant Title : ASP BNA STANDARDS FOR 5 POINT CALIBRATION

TIC Library : C:\DATABASE\NIST11.L
 TIC Integration Parameters: LSCINT.P



Data Path : Z:\HPCHEM1\BNA F\DATA\BF022118\
 Data File : BF103138.D
 Acq On : 21 Feb 2018 16:05
 Operator : SJ/JU
 Sample : J1623-17
 Misc :
 ALS Vial : 13 Sample Multiplier: 1

Instrument :
 BNA_F
 ClientSampled :
 TP-9-10

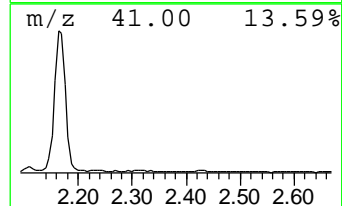
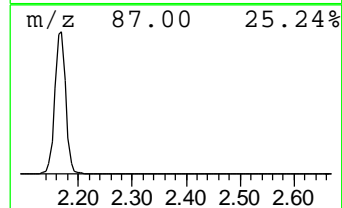
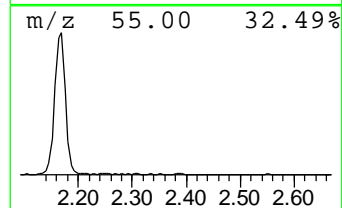
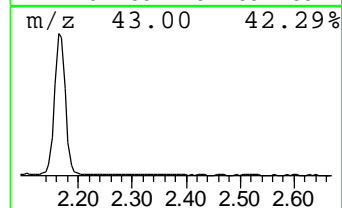
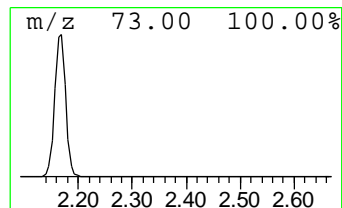
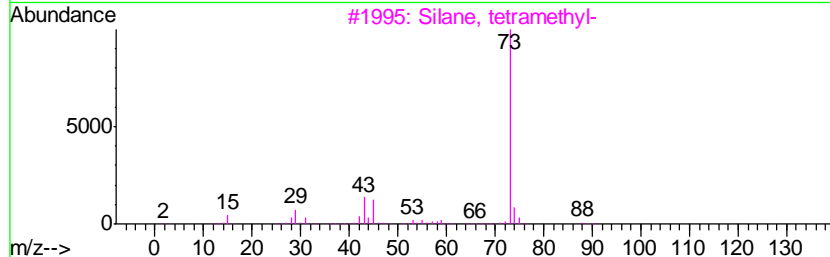
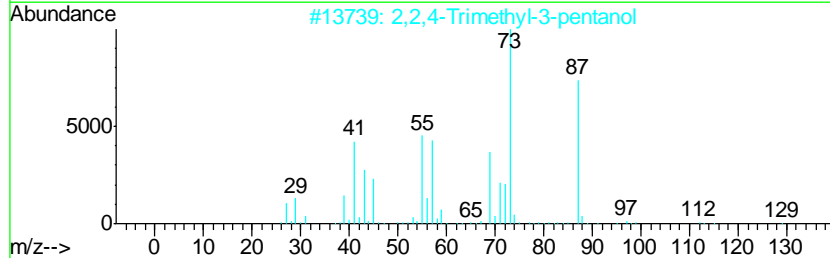
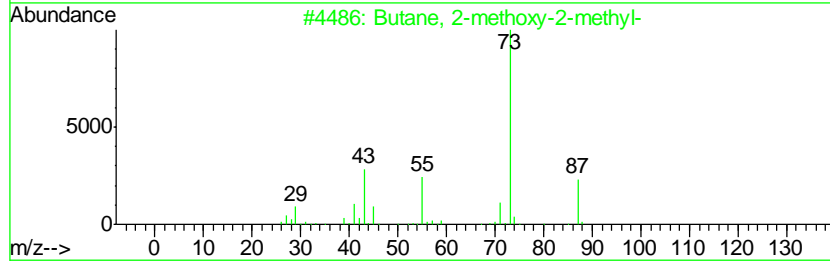
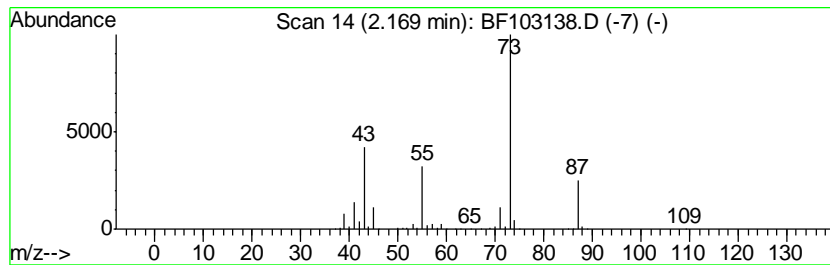
Quant Method : Z:\HPCHEM1\BNA F\METHODS\8270-BF020318.M
 Quant Title : ASP BNA STANDARDS FOR 5 POINT CALIBRATION

TIC Library : C:\DATABASE\NIST11.L
 TIC Integration Parameters: LSCINT.P

 Peak Number 1 Butane, 2-methoxy-2-methyl- Concentration Rank 3

R.T.	EstConc	Area	Relative to ISTD	R.T.
2.17	31.55 ng	1589650	1,4-Dichlorobenzene-d4	6.87

Hit#	of	Tentative ID	MW	MolForm	CAS#	Qual
1	5	Butane, 2-methoxy-2-methyl-	102	C6H14O	000994-05-8	83
2		2,2,4-Trimethyl-3-pentanol	130	C8H18O	005162-48-1	40
3		Silane, tetramethyl-	88	C4H12Si	000075-76-3	38
4		3-Pentanol, 2,4-dimethyl-	116	C7H16O	000600-36-2	37
5		1,3-Dioxolane, 2-methyl-	88	C4H8O2	000497-26-7	23



Data Path : Z:\HPCHEM1\BNA F\DATA\BF022118\
 Data File : BF103138.D
 Acq On : 21 Feb 2018 16:05
 Operator : SJ/JU
 Sample : J1623-17
 Misc :
 ALS Vial : 13 Sample Multiplier: 1

Instrument :
 BNA_F
 ClientSampled :
 TP-9-10

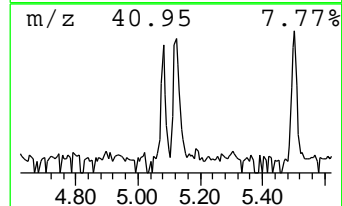
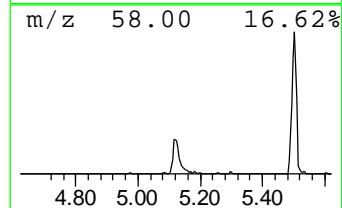
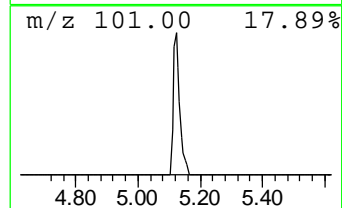
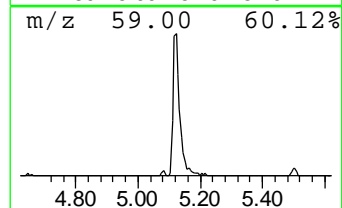
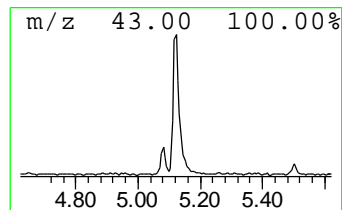
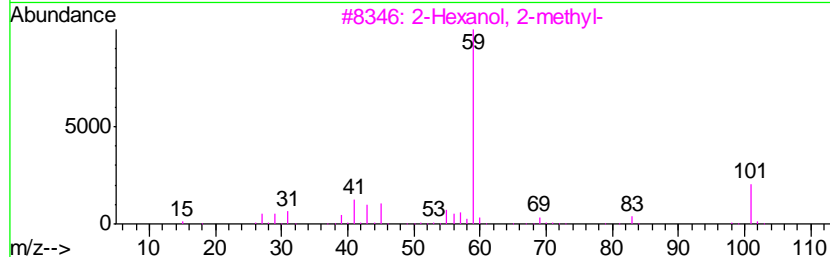
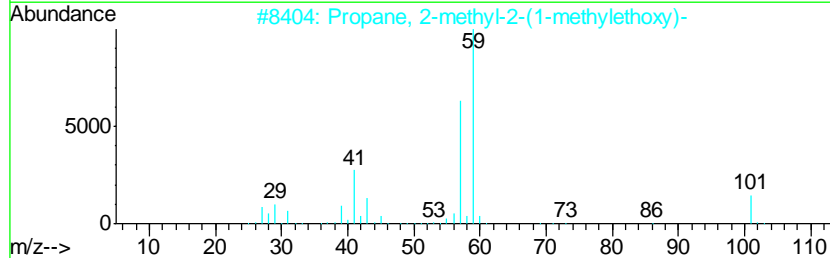
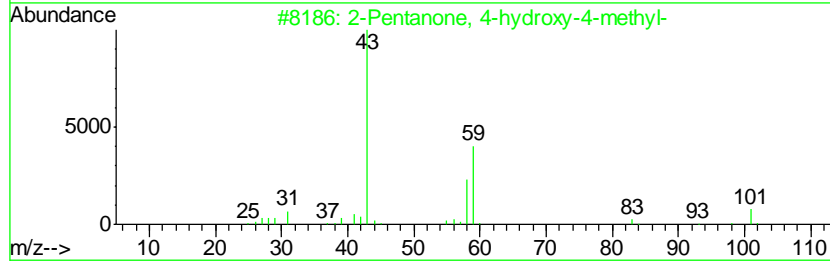
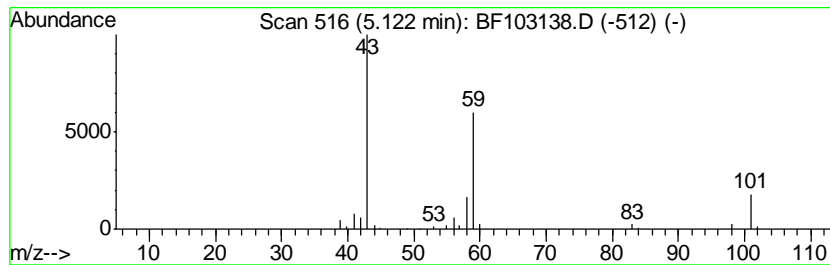
Quant Method : Z:\HPCHEM1\BNA F\METHODS\8270-BF020318.M
 Quant Title : ASP BNA STANDARDS FOR 5 POINT CALIBRATION

TIC Library : C:\DATABASE\NIST11.L
 TIC Integration Parameters: LSCINT.P

 Peak Number 2 2-Pentanone, 4-hydroxy-4-me... Concentration Rank 10

R.T.	EstConc	Area	Relative to ISTD	R.T.
5.12	2.73 ng	137694	1,4-Dichlorobenzene-d4	6.87

Hit#	of	Tentative ID	MW	MolForm	CAS#	Qual
1	5	2-Pentanone, 4-hydroxy-4-methyl-	116	C6H12O2	000123-42-2	56
2		Propane, 2-methyl-2-(1-methyleth...	116	C7H16O	017348-59-3	42
3		2-Hexanol, 2-methyl-	116	C7H16O	000625-23-0	28
4		Acetone	58	C3H6O	000067-64-1	22
5		Butane, 1-ethoxy-	102	C6H14O	000628-81-9	9



Data Path : Z:\HPCHEM1\BNA F\DATA\BF022118\
 Data File : BF103138.D
 Acq On : 21 Feb 2018 16:05
 Operator : SJ/JU
 Sample : J1623-17
 Misc :
 ALS Vial : 13 Sample Multiplier: 1

Instrument :
 BNA_F
 ClientSampled :
 TP-9-10

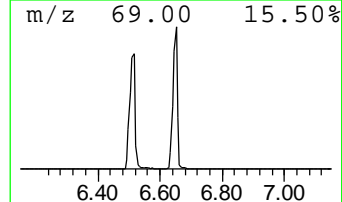
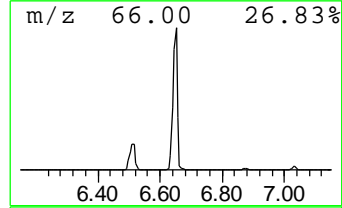
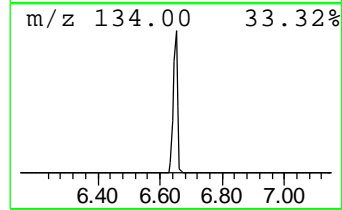
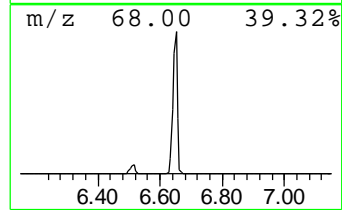
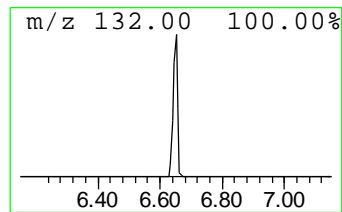
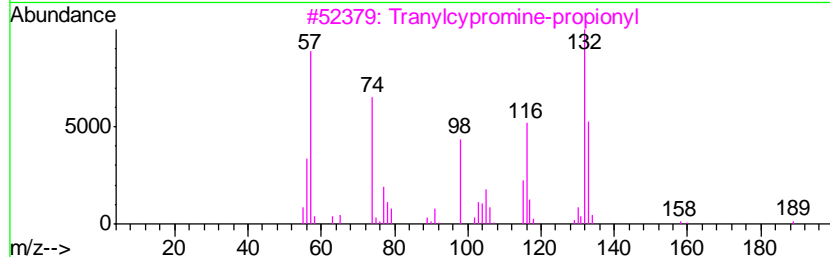
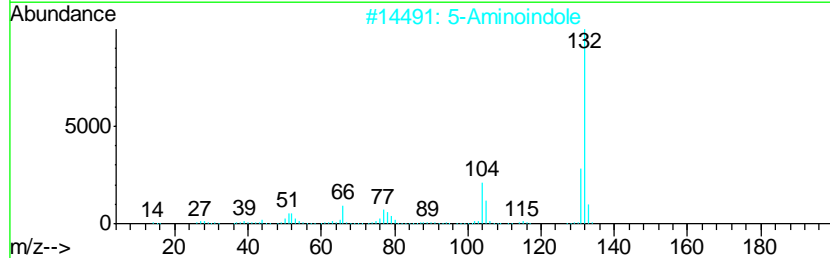
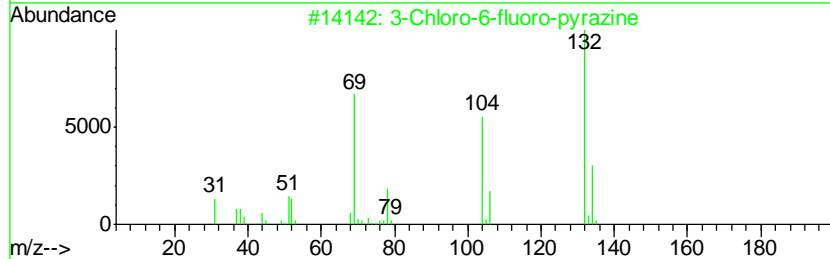
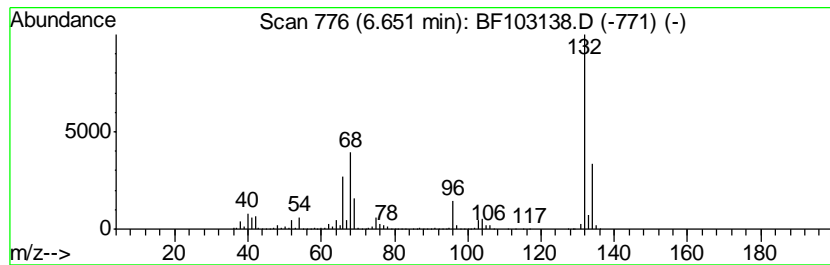
Quant Method : Z:\HPCHEM1\BNA F\METHODS\8270-BF020318.M
 Quant Title : ASP BNA STANDARDS FOR 5 POINT CALIBRATION

TIC Library : C:\DATABASE\NIST11.L
 TIC Integration Parameters: LSCINT.P

 Peak Number 3 unknown6.65 Concentration Rank 1

R.T.	EstConc	Area	Relative to ISTD	R.T.
6.65	80.10 ng	4035740	1,4-Dichlorobenzene-d4	6.87

Hit#	of	Tentative ID	MW	MolForm	CAS#	Qual
1	5	3-Chloro-6-fluoro-pyrazine	132	C4H2ClFN2	1000146-10-7	27
2		5-Aminoindole	132	C8H8N2	005192-03-0	12
3		Tranlycypromine-propionyl	189	C12H15NO	1000123-86-3	10
4		Bicyclo[4.2.0]octa-1,3,5-triene,...	132	C10H12	028749-81-7	9
5		(E)-3-Chloro-2-methyl-2-pentenal	132	C6H9ClO	031357-76-3	9



Data Path : Z:\HPCHEM1\BNA F\DATA\BF022118\
 Data File : BF103138.D
 Acq On : 21 Feb 2018 16:05
 Operator : SJ/JU
 Sample : J1623-17
 Misc :
 ALS Vial : 13 Sample Multiplier: 1

Instrument :
 BNA_F
 ClientSampleID :
 TP-9-10

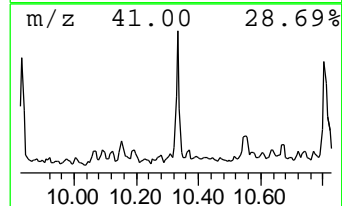
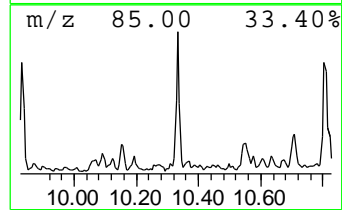
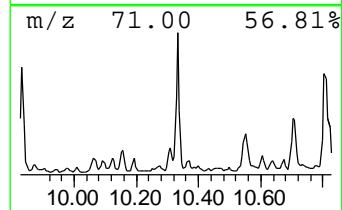
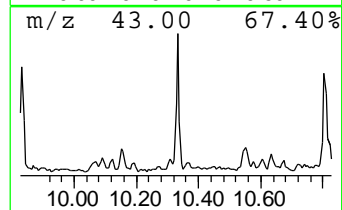
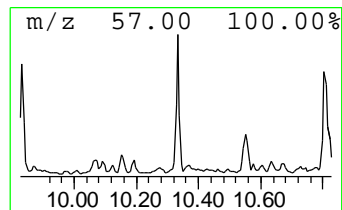
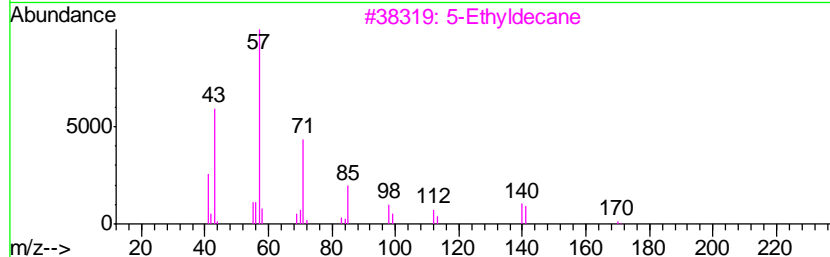
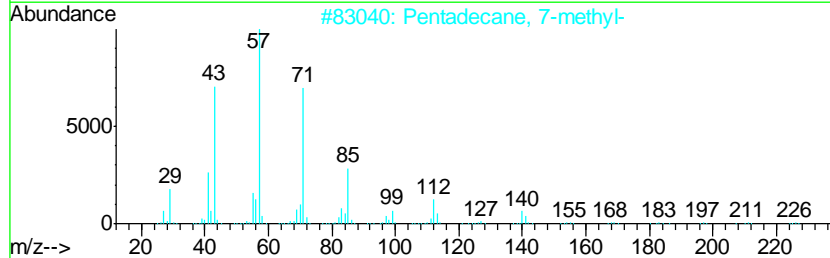
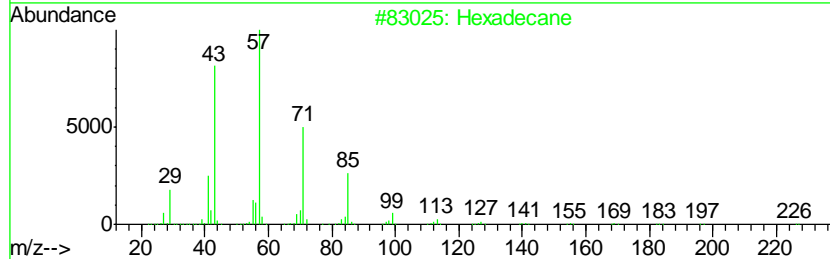
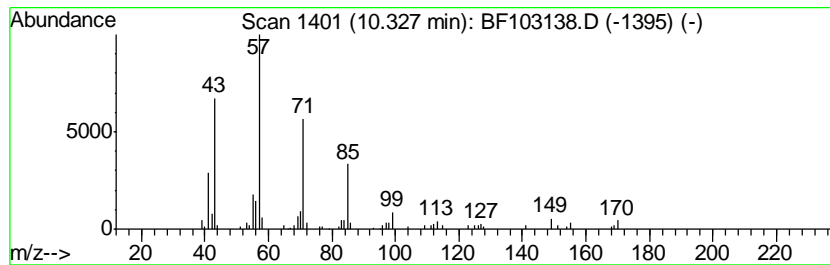
Quant Method : Z:\HPCHEM1\BNA F\METHODS\8270-BF020318.M
 Quant Title : ASP BNA STANDARDS FOR 5 POINT CALIBRATION

TIC Library : C:\DATABASE\NIST11.L
 TIC Integration Parameters: LSCINT.P

 Peak Number 5 Hexadecane Concentration Rank 9

R.T.	EstConc	Area	Relative to ISTD	R.T.
10.33	2.76 ng	182900	Acenaphthene-d10	9.92

Hit#	of	Tentative ID	MW	MolForm	CAS#	Qual
1	5	Hexadecane	226	C16H34	000544-76-3	96
2		Pentadecane, 7-methyl-	226	C16H34	006165-40-8	91
3		5-Ethyldecane	170	C12H26	017302-36-2	91
4		Dodecane, 2-methyl-6-propyl-	226	C16H34	055045-08-4	86
5		Eicosane	282	C20H42	000112-95-8	86



Data Path : Z:\HPCHEM1\BNA F\DATA\BF022118\
 Data File : BF103138.D
 Acq On : 21 Feb 2018 16:05
 Operator : SJ/JU
 Sample : J1623-17
 Misc :
 ALS Vial : 13 Sample Multiplier: 1

Instrument :
 BNA_F
 ClientSampled :
 TP-9-10

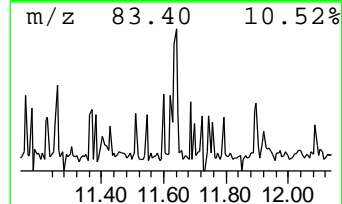
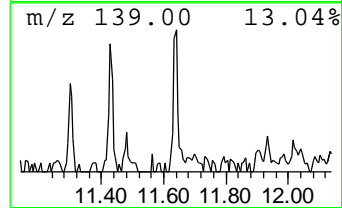
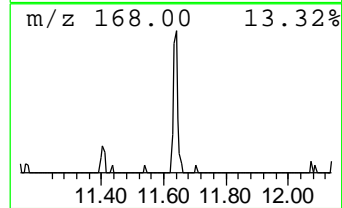
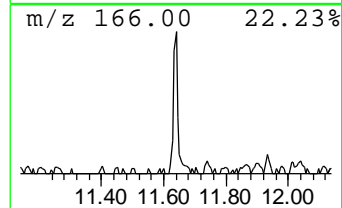
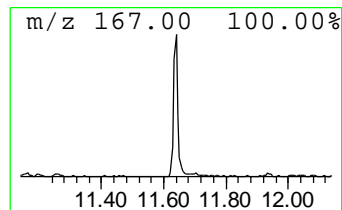
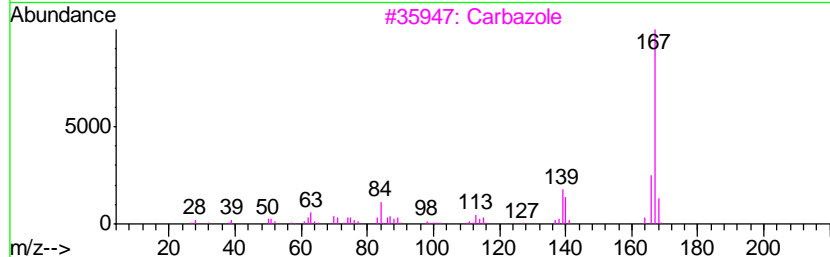
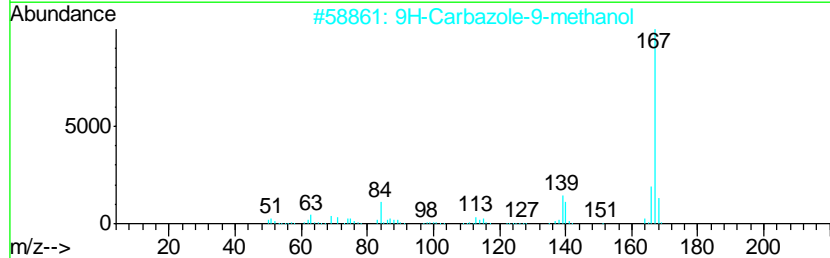
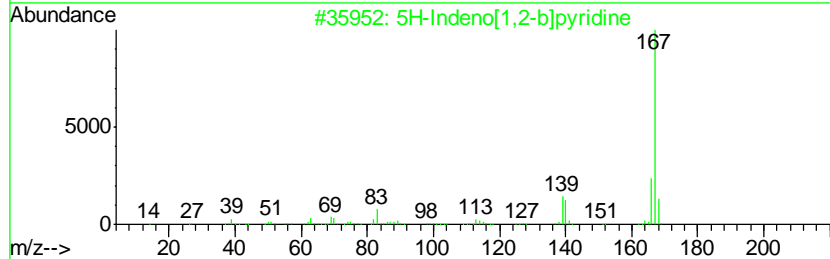
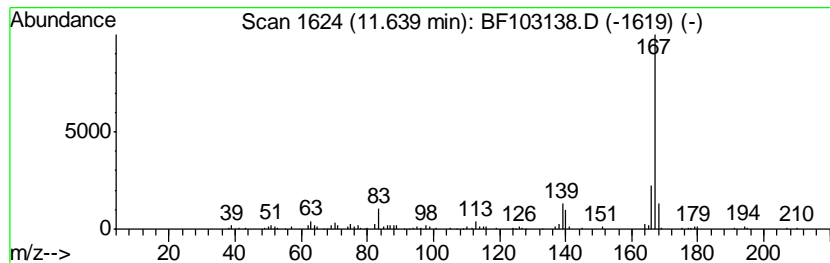
Quant Method : Z:\HPCHEM1\BNA F\METHODS\8270-BF020318.M
 Quant Title : ASP BNA STANDARDS FOR 5 POINT CALIBRATION

TIC Library : C:\DATABASE\NIST11.L
 TIC Integration Parameters: LSCINT.P

 Peak Number 7 5H-Indeno[1,2-b]pyridine Concentration Rank 11

R.T.	EstConc	Area	Relative to ISTD	R.T.
11.64	2.34 ng	130956	Phenanthrene-d10	11.40

Hit#	of	Tentative ID	MW	MolForm	CAS#	Qual
1	5	5H-Indeno[1,2-b]pyridine	167	C12H9N	000244-99-5	93
2		9H-Carbazole-9-methanol	197	C13H11NO	002409-36-1	87
3		Carbazole	167	C12H9N	000086-74-8	87
4		9H-Carbazole, 9-nitroso-	196	C12H8N2O	002788-23-0	87
5		2-Azafluorene	167	C12H9N	000244-40-6	83



Data Path : Z:\HPCHEM1\BNA F\DATA\BF022118\
 Data File : BF103138.D
 Acq On : 21 Feb 2018 16:05
 Operator : SJ/JU
 Sample : J1623-17
 Misc :
 ALS Vial : 13 Sample Multiplier: 1

Instrument :
 BNA_F
 ClientSampleID :
 TP-9-10

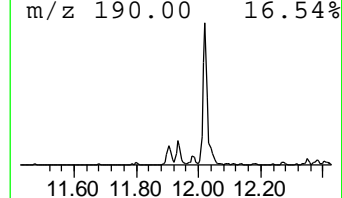
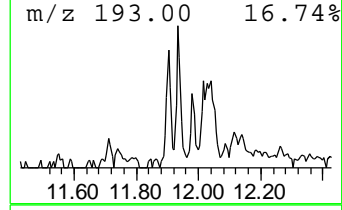
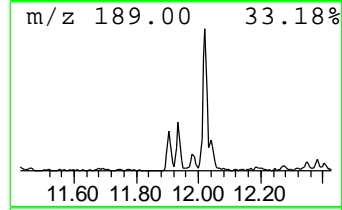
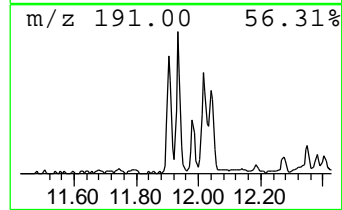
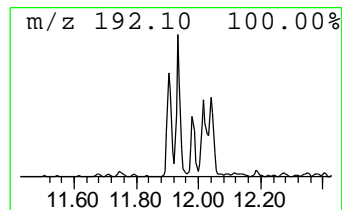
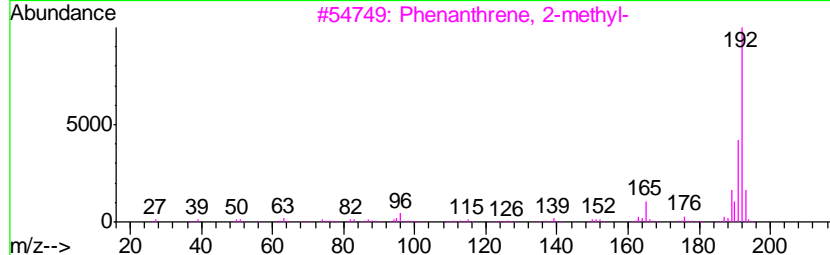
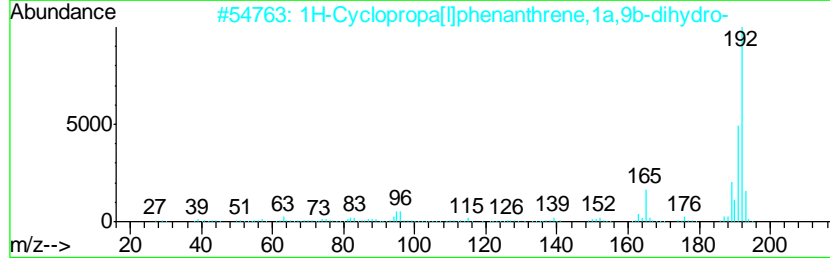
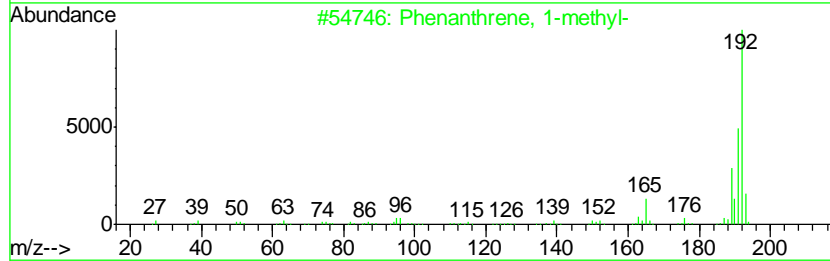
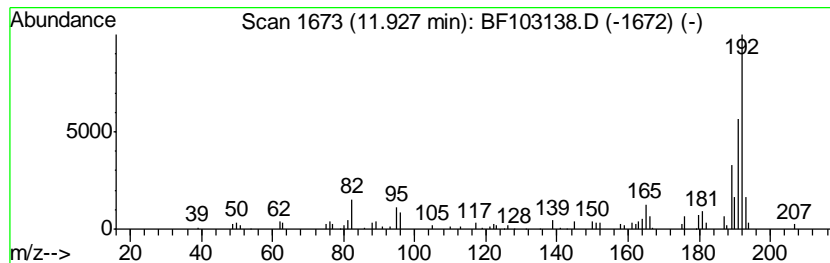
Quant Method : Z:\HPCHEM1\BNA F\METHODS\8270-BF020318.M
 Quant Title : ASP BNA STANDARDS FOR 5 POINT CALIBRATION

TIC Library : C:\DATABASE\NIST11.L
 TIC Integration Parameters: LSCINT.P

 Peak Number 8 Phenanthrene, 1-methyl- Concentration Rank 12

R.T.	EstConc	Area	Relative to ISTD	R.T.
11.93	2.11 ng	118226	Phenanthrene-d10	11.40

Hit#	of	Tentative ID	MW	MolForm	CAS#	Qual
1	5	Phenanthrene, 1-methyl-	192	C15H12	000832-69-9	95
2		1H-Cyclopropa[1]phenanthrene,1a,...	192	C15H12	000949-41-7	95
3		Phenanthrene, 2-methyl-	192	C15H12	002531-84-2	94
4		Anthracene, 2-methyl-	192	C15H12	000613-12-7	94
5		1H-Indene, 2-phenyl-	192	C15H12	004505-48-0	93



Data Path : Z:\HPCHEM1\BNA F\DATA\BF022118\
 Data File : BF103138.D
 Acq On : 21 Feb 2018 16:05
 Operator : SJ/JU
 Sample : J1623-17
 Misc :
 ALS Vial : 13 Sample Multiplier: 1

Instrument :
 BNA_F
 ClientSampled :
 TP-9-10

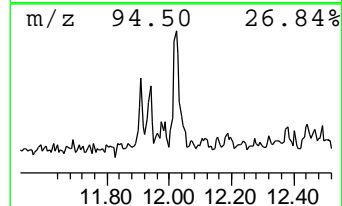
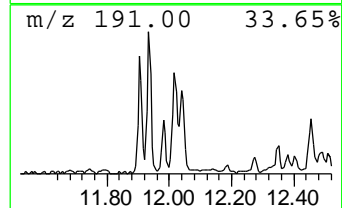
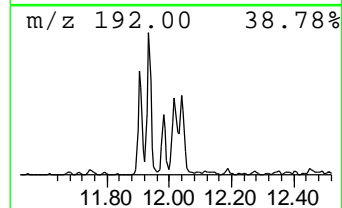
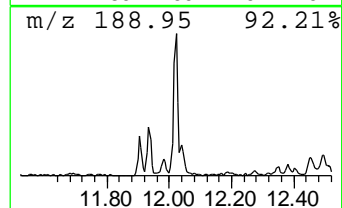
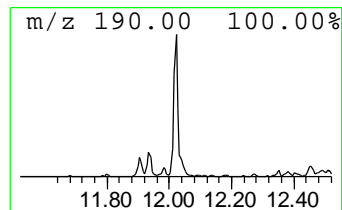
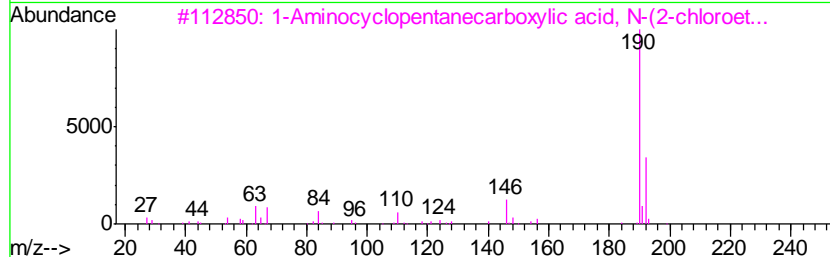
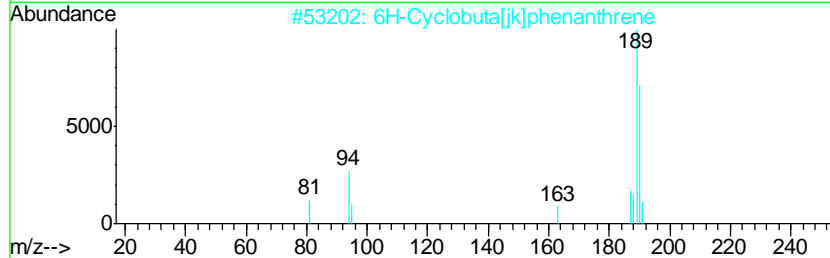
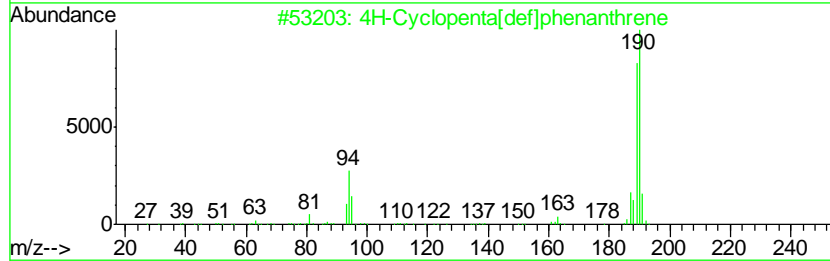
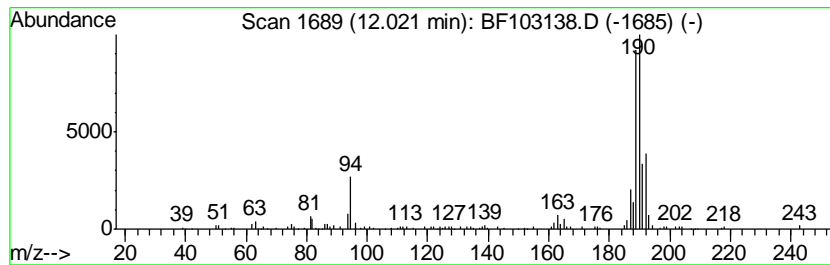
Quant Method : Z:\HPCHEM1\BNA F\METHODS\8270-BF020318.M
 Quant Title : ASP BNA STANDARDS FOR 5 POINT CALIBRATION

TIC Library : C:\DATABASE\NIST11.L
 TIC Integration Parameters: LSCINT.P

 Peak Number 9 4H-Cyclopenta[def]phenanthrene Concentration Rank 7

R.T.	EstConc	Area	Relative to ISTD	R.T.
12.02	3.18 ng	178261	Phenanthrene-d10	11.40

Hit#	of	Tentative ID	MW	MolForm	CAS#	Qual
1	5	4H-Cyclopenta[def]phenanthrene	190	C15H10	000203-64-5	93
2		6H-Cyclobuta[jk]phenanthrene	190	C15H10	083469-43-6	45
3		1-Aminocyclopentanecarboxylic ac...	263	C11H18ClNO4	1000329-16-5	17
4		1-Aminocyclopentanecarboxylic ac...	389	C20H36ClNO4	1000329-17-2	17
5		1-Aminocyclopentanecarboxylic ac...	333	C16H28ClNO4	1000329-16-8	17



Data Path : Z:\HPCHEM1\BNA F\DATA\BF022118\
 Data File : BF103138.D
 Acq On : 21 Feb 2018 16:05
 Operator : SJ/JU
 Sample : J1623-17
 Misc :
 ALS Vial : 13 Sample Multiplier: 1

Instrument :
 BNA_F
 ClientSampleID :
 TP-9-10

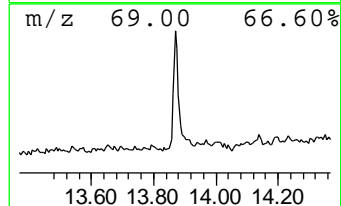
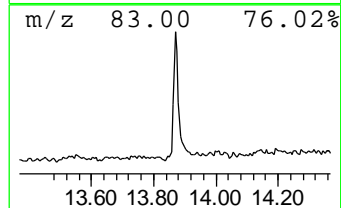
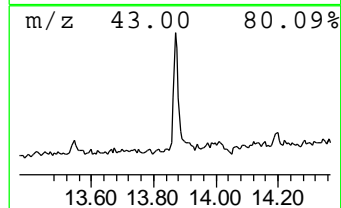
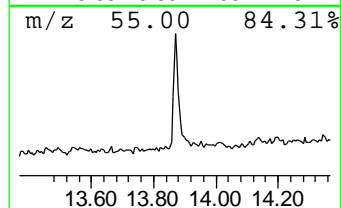
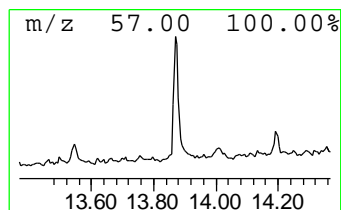
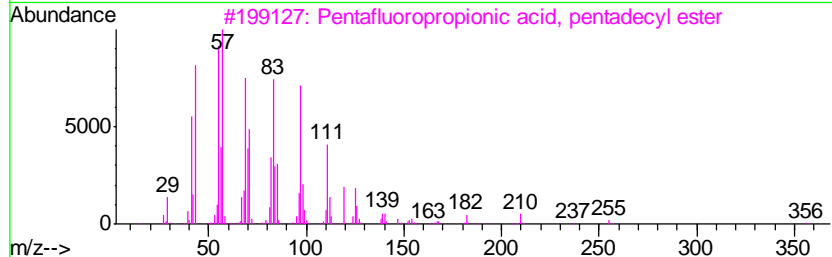
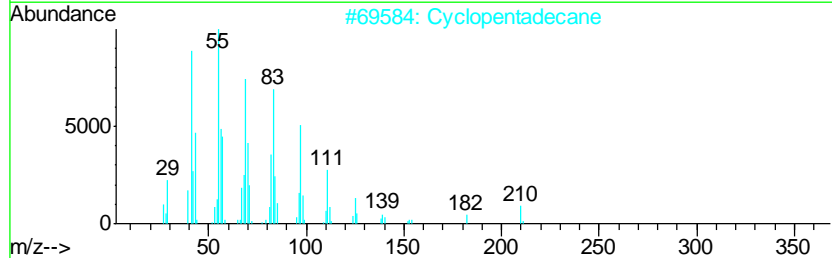
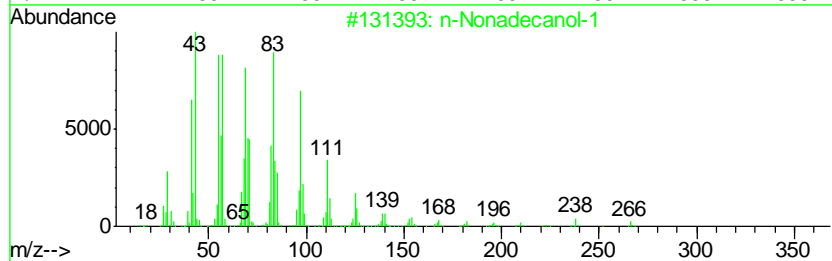
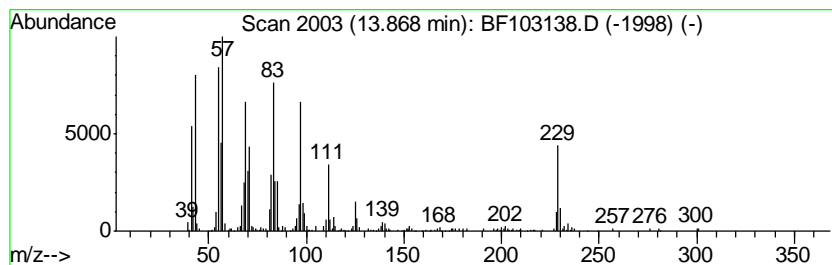
Quant Method : Z:\HPCHEM1\BNA F\METHODS\8270-BF020318.M
 Quant Title : ASP BNA STANDARDS FOR 5 POINT CALIBRATION

TIC Library : C:\DATABASE\NIST11.L
 TIC Integration Parameters: LSCINT.P

 Peak Number 10 n-Nonadecanol-1 Concentration Rank 5

R.T.	EstConc	Area	Relative to ISTD	R.T.
13.87	5.89 ng	404765	Chrysene-d12	14.05

Hit#	of	Tentative ID	MW	MolForm	CAS#	Qual
1	5	n-Nonadecanol-1	284	C19H40O	001454-84-8	90
2		Cyclopentadecane	210	C15H30	000295-48-7	90
3		Pentafluoropropionic acid, penta...	374	C18H31F5O2	959092-08-1	89
4		Trifluoroacetic acid, pentadecyl...	324	C17H31F3O2	959010-23-2	89
5		Heptafluorobutyric acid, pentade...	424	C19H31F7O2	959261-23-5	89



Data Path : Z:\HPCHEM1\BNA F\DATA\BF022118\
 Data File : BF103138.D
 Acq On : 21 Feb 2018 16:05
 Operator : SJ/JU
 Sample : J1623-17
 Misc :
 ALS Vial : 13 Sample Multiplier: 1

Instrument :
 BNA_F
 ClientSampled :
 TP-9-10

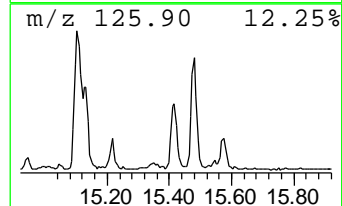
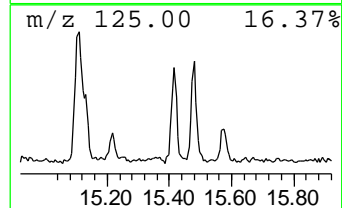
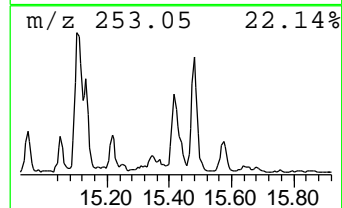
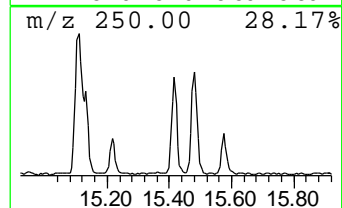
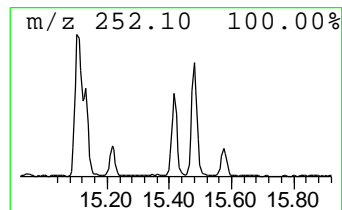
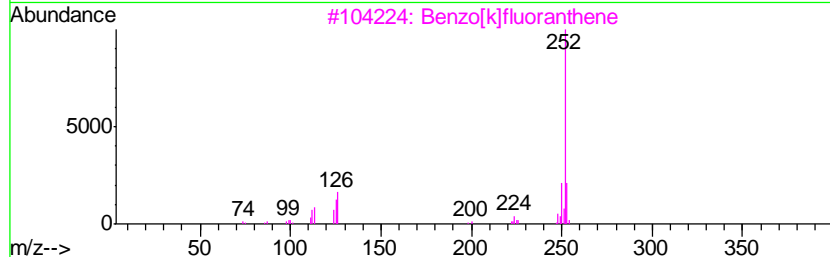
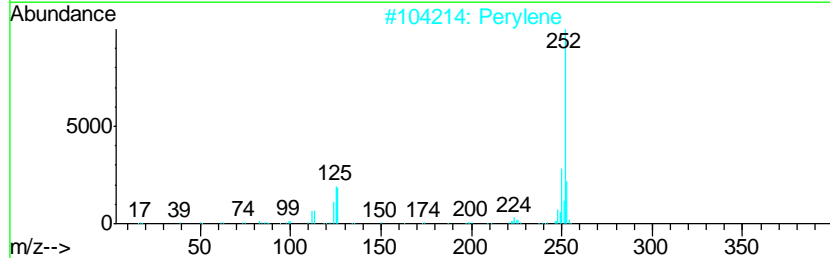
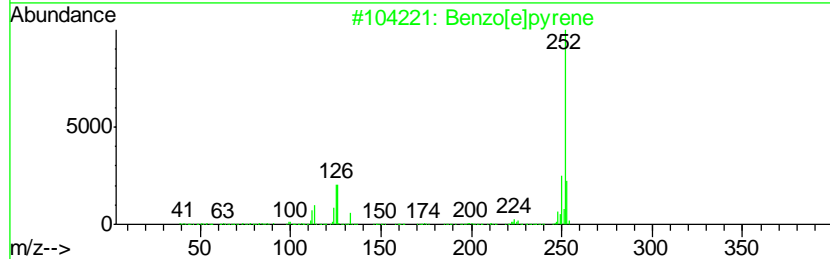
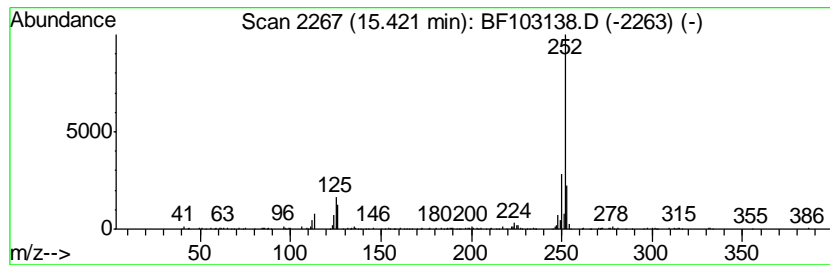
Quant Method : Z:\HPCHEM1\BNA F\METHODS\8270-BF020318.M
 Quant Title : ASP BNA STANDARDS FOR 5 POINT CALIBRATION

TIC Library : C:\DATABASE\NIST11.L
 TIC Integration Parameters: LSCINT.P

 Peak Number 12 Benzo[e]pyrene Concentration Rank 4

R.T.	EstConc	Area	Relative to ISTD	R.T.
15.42	7.35 ng	267171	Perylene-d12	15.54

Hit#	of	Tentative ID	MW	MolForm	CAS#	Qual
1	5	Benzo[e]pyrene	252	C20H12	000192-97-2	98
2		Perylene	252	C20H12	000198-55-0	94
3		Benzo[k]fluoranthene	252	C20H12	000207-08-9	94
4		Benzo[e]acephenanthrylene	252	C20H12	000205-99-2	93
5		Benzo[j]fluoranthene	252	C20H12	000205-82-3	90



Data Path : Z:\HPCHEM1\BNA_F\DATA\BF022118\
Data File : BF103138.D
Acq On : 21 Feb 2018 16:05
Operator : SJ/JU
Sample : J1623-17
Misc :
ALS Vial : 13 Sample Multiplier: 1

Instrument :
BNA_F
ClientSampleId :
TP-9-10

Quant Method : Z:\HPCHEM1\BNA_F\METHODS\8270-BF020318.M
Quant Title : ASP BNA STANDARDS FOR 5 POINT CALIBRATION

TIC Library : C:\DATABASE\NIST11.L
TIC Integration Parameters: LSCINT.P

TIC Top Hit name	RT	EstConc	Units	Response	--Internal Standard--			
					#	RT	Resp	Conc
Butane, 2-methoxy...	2.17	31.6	ng	1589650	1	6.87	1007660	20.0
2-Pentanone, 4-hy...	5.12	2.7	ng	137694	1	6.87	1007660	20.0
unknown6.65	6.65	80.1	ng	4035740	1	6.87	1007660	20.0
Hexadecane	10.33	2.8	ng	182900	3	9.92	1323640	20.0
5H-Indeno[1,2-b]p...	11.64	2.3	ng	130956	4	11.40	1121670	20.0
Phenanthrene, 1-m...	11.93	2.1	ng	118226	4	11.40	1121670	20.0
4H-Cyclopenta[def...	12.02	3.2	ng	178261	4	11.40	1121670	20.0
n-Nonadecanol-1	13.87	5.9	ng	404765	5	14.05	1374900	20.0
Benzo[e]pyrene	15.42	7.3	ng	267171	6	15.54	726680	20.0