

Data Path : Z:\svoasrv\HPCHEM1\BNA\_F\Data\BF022322\  
 Data File : BF127053.D  
 Acq On : 23 Feb 2022 21:55  
 Operator : CG\JU  
 Sample : N1626-06 5X  
 Misc :  
 ALS Vial : 23 Sample Multiplier: 1

Instrument :  
 BNA\_F  
 ClientSampleId :  
 CC-B3

Integration Parameters: rteint.p  
 Integrator: RTE  
 Smoothing : ON  
 Sampling : 1  
 Start Thrs : 0.2  
 Stop Thrs : 0  
 Filtering: 5  
 Min Area: 3 % of largest Peak  
 Max Peaks: 100  
 Peak Location: TOP

If leading or trailing edge < 100 prefer < Baseline drop else tangent >  
 Peak separation: 5

Method : Z:\svoasrv\HPCHEM1\BNA\_F\Methods\8270-BF021622.M  
 Title : ASP BNA STANDARDS FOR 5 POINT CALIBRATION

Signal : TIC: BF127053.D\data.ms

peak #	R.T. min	first scan	max scan	last scan	PK TY	peak height	corr. area	corr. % max.	% of total
1	3.669	228	235	241	rBV	10294	16391	1.91%	0.190%
2	4.528	374	381	385	rBV	798269	860198	100.00%	9.997%
3	5.134	480	484	487	rBV	201808	191187	22.23%	2.222%
4	5.540	549	553	558	rBV	75577	67790	7.88%	0.788%
5	6.540	720	723	732	rBV	182116	155501	18.08%	1.807%
6	6.916	783	787	791	rBV	536625	421668	49.02%	4.901%
7	7.234	838	841	846	rVB	29000	22683	2.64%	0.264%
8	7.475	878	882	885	rBV	259631	206403	23.99%	2.399%
9	8.204	1002	1006	1008	rBV	561469	483980	56.26%	5.625%
10	8.222	1008	1009	1012	rVB	46537	25173	2.93%	0.293%
11	9.275	1184	1188	1191	rBV	413962	339013	39.41%	3.940%
12	9.904	1292	1295	1301	rBV	168903	150241	17.47%	1.746%
13	9.963	1301	1305	1308	rVV	491109	410870	47.76%	4.775%
14	9.992	1308	1310	1313	rVB	71196	49590	5.76%	0.576%
15	10.163	1336	1339	1343	rBV	43291	33735	3.92%	0.392%
16	10.375	1373	1375	1379	rVB2	19827	18630	2.17%	0.217%
17	10.510	1394	1398	1401	rBV	72748	57958	6.74%	0.674%
18	10.663	1419	1424	1426	rBV5	12832	16601	1.93%	0.193%
19	10.751	1435	1439	1443	rBV3	39832	48267	5.61%	0.561%
20	10.851	1453	1456	1458	rBV	67768	65903	7.66%	0.766%
21	10.875	1458	1460	1466	rVB	365789	330030	38.37%	3.836%
22	11.051	1486	1490	1494	rBV6	15820	27270	3.17%	0.317%
23	11.151	1503	1507	1509	rBV2	20958	32194	3.74%	0.374%
24	11.304	1529	1533	1535	rBV	132054	120385	14.00%	1.399%
25	11.333	1535	1538	1540	rBV	58215	57548	6.69%	0.669%
26	11.451	1555	1558	1560	rBV	382690	359897	41.84%	4.183%
27	11.480	1560	1563	1566	rVV	524731	436931	50.79%	5.078%
28	11.527	1568	1571	1574	rVB	108047	88137	10.25%	1.024%
29	11.610	1583	1585	1590	rBV4	32423	43922	5.11%	0.510%
30	11.680	1595	1597	1601	rVB	97678	88405	10.28%	1.027%
31	11.727	1603	1605	1608	rVV	158815	150084	17.45%	1.744%
32	11.757	1608	1610	1614	rVB	477211	384428	44.69%	4.468%
33	11.957	1642	1644	1647	rBV2	43292	50238	5.84%	0.584%
34	11.986	1647	1649	1653	rVV3	60706	60057	6.98%	0.698%
35	12.027	1654	1656	1659	rVV3	40688	53804	6.25%	0.625%
36	12.069	1661	1663	1668	rVV3	67306	105645	12.28%	1.228%

Data Path : Z:\svoasrv\HPCHEM1\BNA\_F\Data\BF022322\  
 Data File : BF127053.D  
 Acq On : 23 Feb 2022 21:55  
 Operator : CG\JU  
 Sample : N1626-06 5X  
 Misc :  
 ALS Vial : 23 Sample Multiplier: 1

Instrument :  
 BNA\_F  
 ClientSampleId :  
 CC-B3

Integration Parameters: rteint.p  
 Integrator: RTE  
 Smoothing : ON Filtering: 5  
 Sampling : 1 Min Area: 3 % of largest Peak  
 Start Thrs: 0.2 Max Peaks: 100  
 Stop Thrs : 0 Peak Location: TOP

If leading or trailing edge < 100 prefer < Baseline drop else tangent >  
 Peak separation: 5

Method : Z:\svoasrv\HPCHEM1\BNA\_F\Methods\8270-BF021622.M  
 Title : ASP BNA STANDARDS FOR 5 POINT CALIBRATION

37	12.139	1672	1675	1679	rVV	158792	133921	15.57%	1.556%
38	12.421	1720	1723	1725	rBV	61417	53355	6.20%	0.620%
39	12.469	1728	1731	1733	rVV	219503	183162	21.29%	2.129%
40	12.492	1733	1735	1739	rVV	112665	111267	12.94%	1.293%
41	12.527	1739	1741	1744	rVV	142918	121128	14.08%	1.408%
42	12.557	1744	1746	1753	rVB	304026	271230	31.53%	3.152%
43	12.633	1757	1759	1762	rBV3	64667	68658	7.98%	0.798%
44	12.674	1762	1766	1769	rBV	636145	520048	60.46%	6.044%
45	12.904	1802	1805	1809	rVB	610861	512113	59.53%	5.952%
46	13.039	1825	1828	1830	rVB	297707	244300	28.40%	2.839%
47	13.263	1863	1866	1868	rBV	210086	199602	23.20%	2.320%
48	13.604	1922	1924	1927	rBV2	182967	154940	18.01%	1.801%

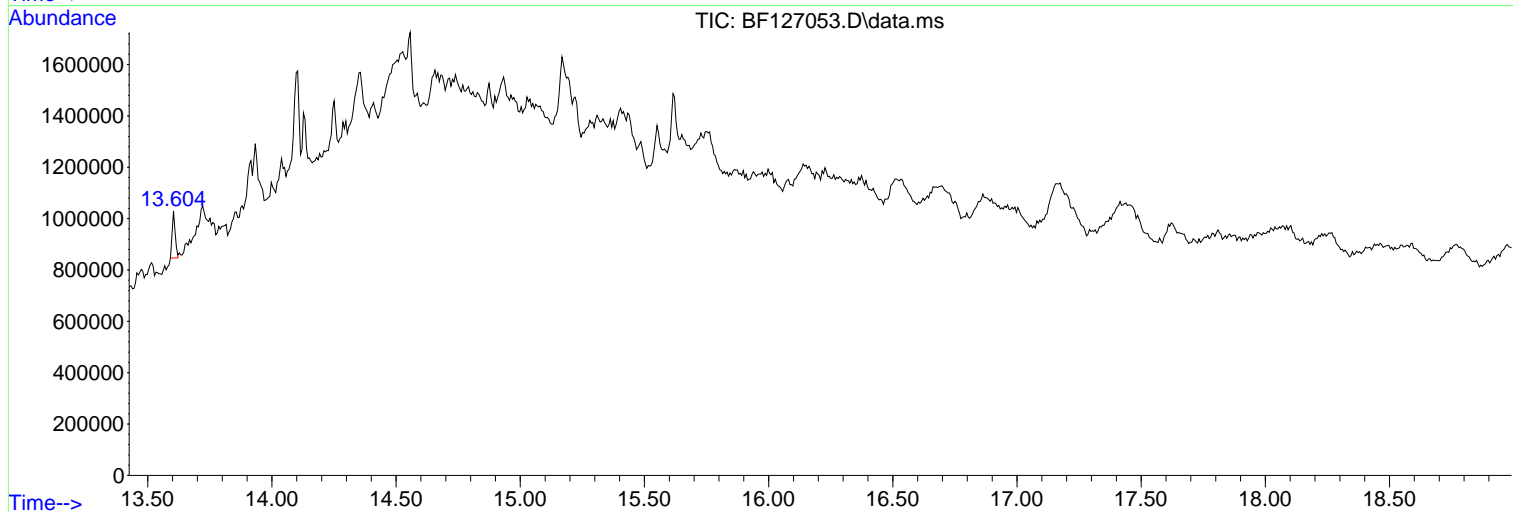
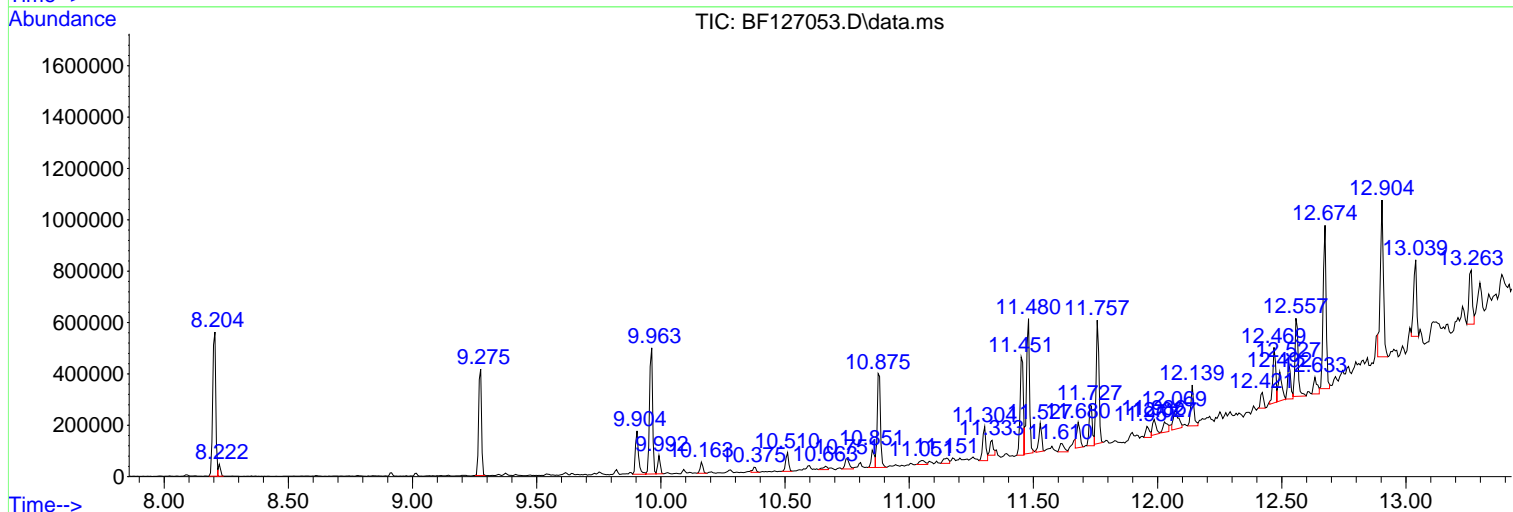
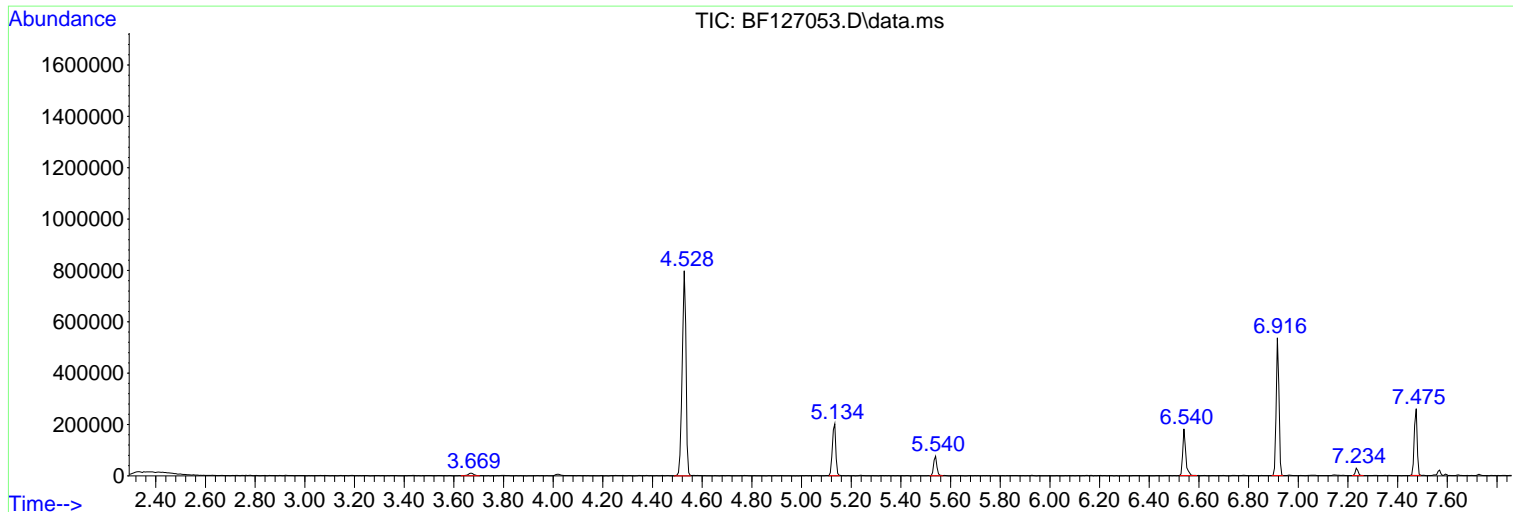
Sum of corrected areas: 8604481

Data Path : Z:\svoasrv\HPCHEM1\BNA\_F\Data\BF022322\  
 Data File : BF127053.D  
 Acq On : 23 Feb 2022 21:55  
 Operator : CG\JU  
 Sample : N1626-06 5X  
 Misc :  
 ALS Vial : 23 Sample Multiplier: 1

Instrument :  
 BNA\_F  
 ClientSampleId :  
 CC-B3

Quant Method : Z:\svoasrv\HPCHEM1\BNA\_F\Methods\8270-BF021622.M  
 Quant Title : ASP BNA STANDARDS FOR 5 POINT CALIBRATION

TIC Library : C:\Database\NIST20.L  
 TIC Integration Parameters: LSCINT.P



Data Path : Z:\svoasrv\HPCHEM1\BNA\_F\Data\BF022322\  
 Data File : BF127053.D  
 Acq On : 23 Feb 2022 21:55  
 Operator : CG\JU  
 Sample : N1626-06 5X  
 Misc :  
 ALS Vial : 23 Sample Multiplier: 1

Instrument :  
 BNA\_F  
 ClientSampleId :  
 CC-B3

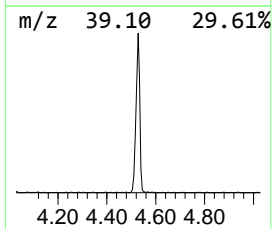
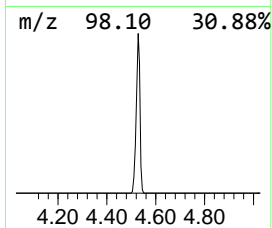
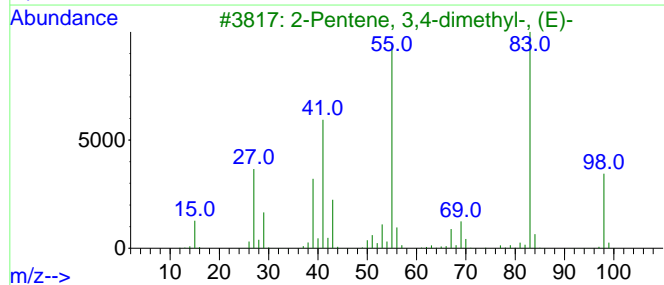
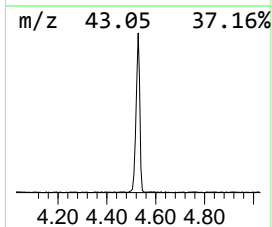
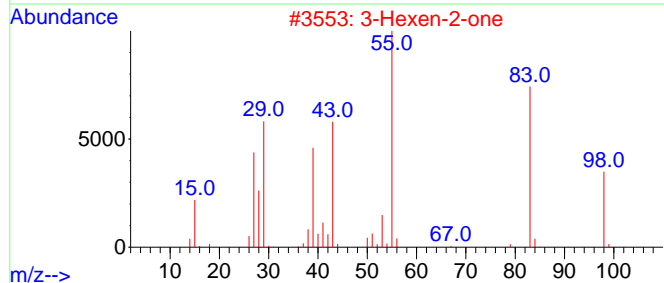
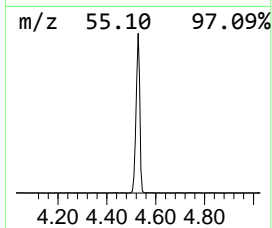
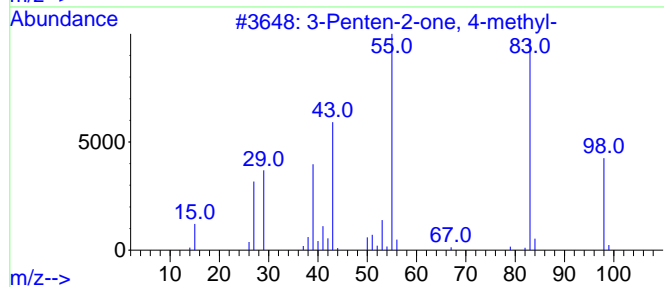
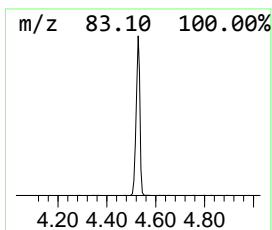
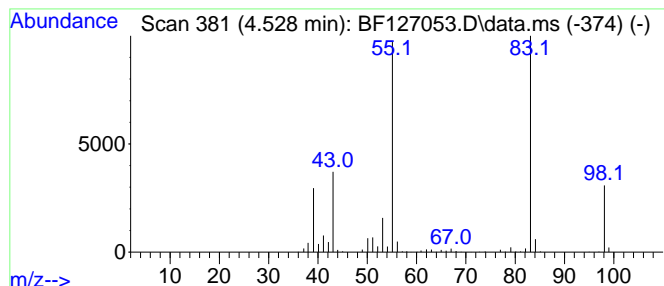
Quant Method : Z:\svoasrv\HPCHEM1\BNA\_F\Methods\8270-BF021622.M  
 Quant Title : ASP BNA STANDARDS FOR 5 POINT CALIBRATION

TIC Library : C:\Database\NIST20.L  
 TIC Integration Parameters: LSCINT.P

\*\*\*\*\*  
 Peak Number 1 3-Penten-2-one, 4-methyl- Concentration Rank 1

R.T.	EstConc	Area	Relative to ISTD	R.T.
4.528	40.80 ng	860198	1,4-Dichlorobenzene-d4	6.916

Hit#	of 5	Tentative ID	MW	MolForm	CAS#	Qual
1		3-Penten-2-one, 4-methyl-	98	C6H10O	000141-79-7	91
2		3-Hexen-2-one	98	C6H10O	000763-93-9	91
3		2-Pentene, 3,4-dimethyl-, (E)-	98	C7H14	004914-92-5	86
4		2-Pentene, 2,4-dimethyl-	98	C7H14	000625-65-0	86
5		2-Pentene, 4,4-dimethyl-, (E)-	98	C7H14	000690-08-4	86



Data Path : Z:\svoasrv\HPCHEM1\BNA\_F\Data\BF022322\  
 Data File : BF127053.D  
 Acq On : 23 Feb 2022 21:55  
 Operator : CG\JU  
 Sample : N1626-06 5X  
 Misc :  
 ALS Vial : 23 Sample Multiplier: 1

Instrument :  
 BNA\_F  
 ClientSampleId :  
 CC-B3

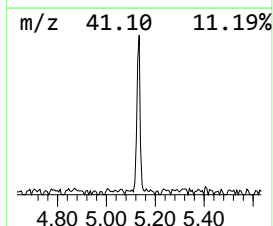
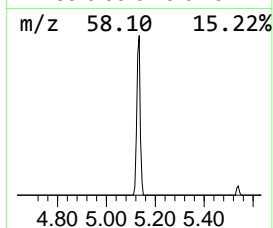
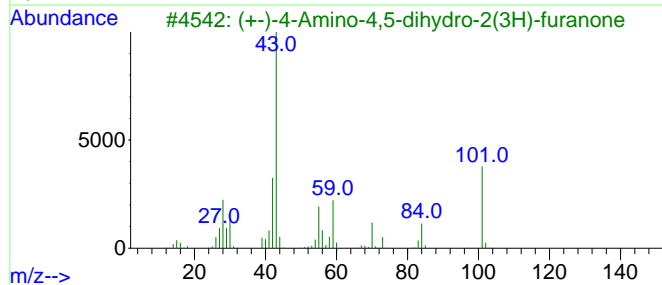
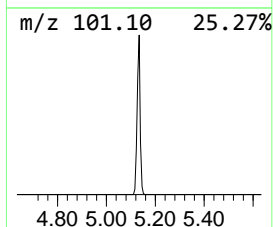
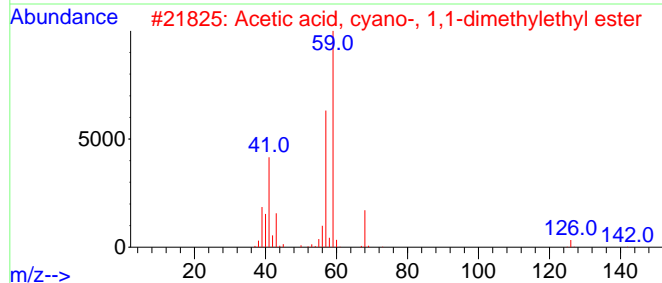
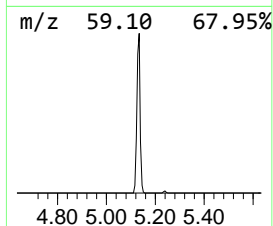
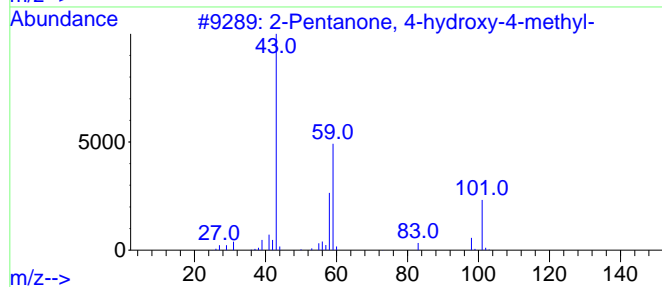
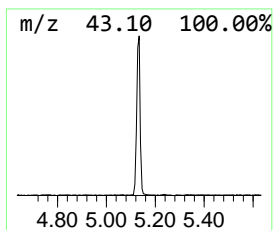
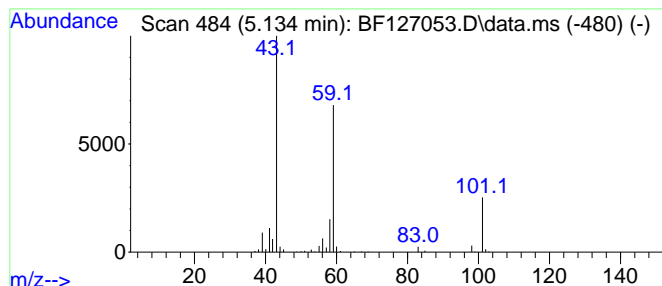
Quant Method : Z:\svoasrv\HPCHEM1\BNA\_F\Methods\8270-BF021622.M  
 Quant Title : ASP BNA STANDARDS FOR 5 POINT CALIBRATION

TIC Library : C:\Database\NIST20.L  
 TIC Integration Parameters: LSCINT.P

\*\*\*\*\*  
 Peak Number 2 2-Pentanone, 4-hydroxy-4-me... Concentration Rank 8

R.T.	EstConc	Area	Relative to ISTD	R.T.
5.134	9.07 ng	191187	1,4-Dichlorobenzene-d4	6.916

Hit#	of	5	Tentative ID	MW	MolForm	CAS#	Qual
1			2-Pentanone, 4-hydroxy-4-methyl-	116	C6H12O2	000123-42-2	40
2			Acetic acid, cyano-, 1,1-dimethy...	141	C7H11NO2	001116-98-9	32
3			(+)-4-Amino-4,5-dihydro-2(3H)-f...	101	C4H7NO2	016504-58-8	17
4			1-Propen-2-ol, acetate	100	C5H8O2	000108-22-5	10
5			Morpholine, 4-methyl-	101	C5H11NO	000109-02-4	9



Data Path : Z:\svoasrv\HPCHEM1\BNA\_F\Data\BF022322\  
 Data File : BF127053.D  
 Acq On : 23 Feb 2022 21:55  
 Operator : CG\JU  
 Sample : N1626-06 5X  
 Misc :  
 ALS Vial : 23 Sample Multiplier: 1

Instrument :  
 BNA\_F  
 ClientSampleId :  
 CC-B3

Quant Method : Z:\svoasrv\HPCHEM1\BNA\_F\Methods\8270-BF021622.M  
 Quant Title : ASP BNA STANDARDS FOR 5 POINT CALIBRATION

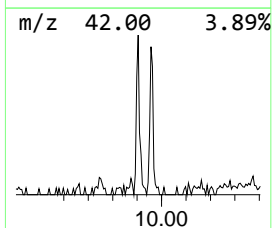
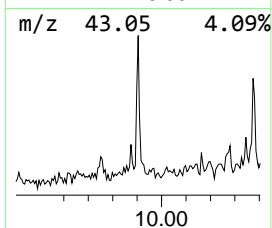
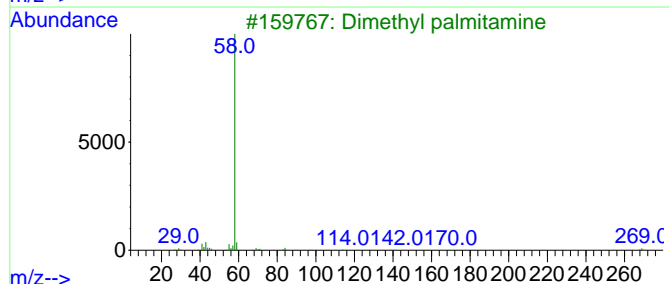
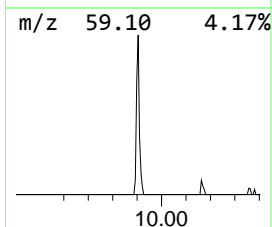
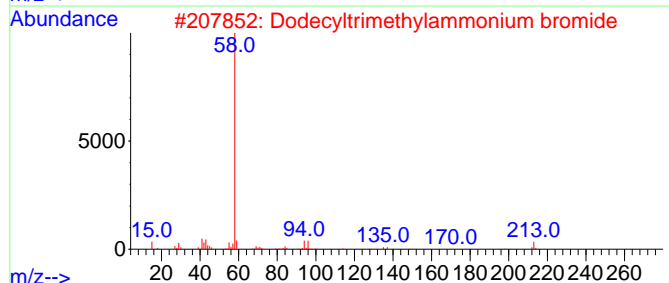
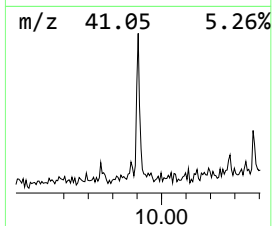
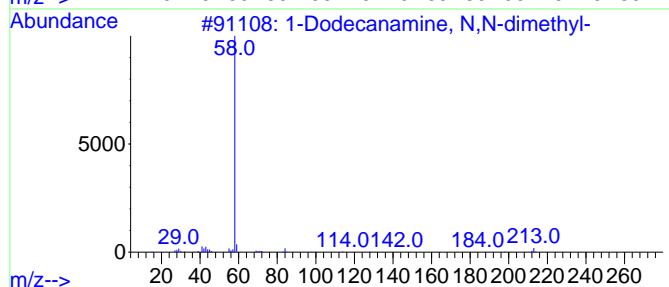
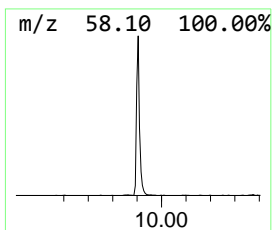
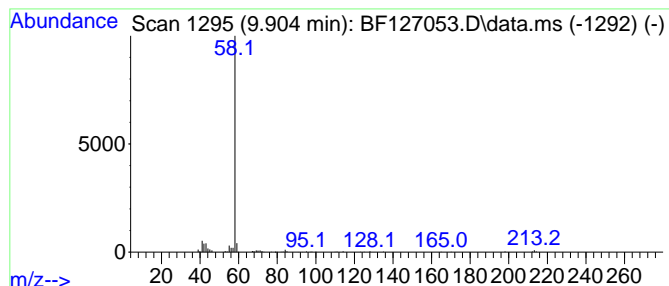
TIC Library : C:\Database\NIST20.L  
 TIC Integration Parameters: LSCINT.P

\*\*\*\*\*  
 Peak Number 3 1-Dodecanamine, N,N-dimethyl- Concentration Rank 10

R.T.	EstConc	Area	Relative to ISTD	R.T.
9.904	7.31 ng	150241	Acenaphthene-d10	9.963

Hit#	of	5	Tentative ID	MW	MolForm	CAS#	Qual
1			1-Dodecanamine, N,N-dimethyl-	213	C14H31N	000112-18-5	90
2			Dodecyltrimethylammonium bromide	307	C15H34BrN	001119-94-4	78
3			Dimethyl palmitamine	269	C18H39N	000112-69-6	72
4			1-Pentadecanamine, N,N-dimethyl-	255	C17H37N	017678-60-3	72
5			1-Tridecanamine, N,N-dimethyl-	227	C15H33N	017373-29-4	72



Data Path : Z:\svoasrv\HPCHEM1\BNA\_F\Data\BF022322\  
 Data File : BF127053.D  
 Acq On : 23 Feb 2022 21:55  
 Operator : CG\JU  
 Sample : N1626-06 5X  
 Misc :  
 ALS Vial : 23 Sample Multiplier: 1

Instrument :  
 BNA\_F  
 ClientSampleId :  
 CC-B3

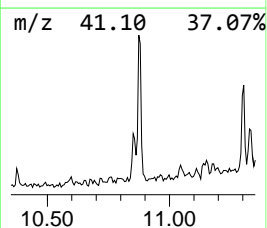
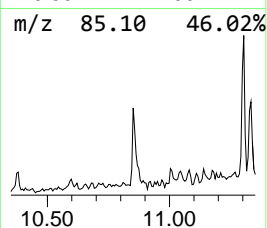
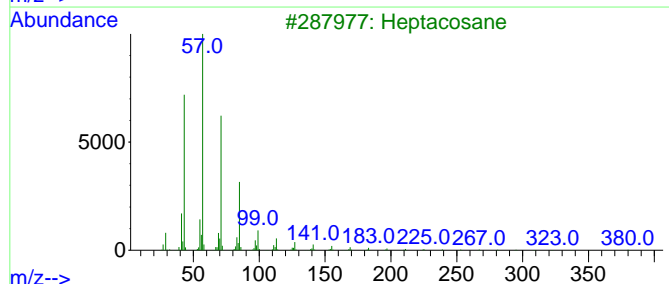
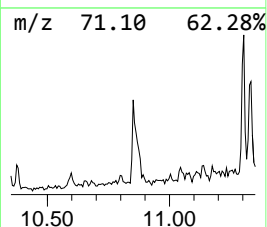
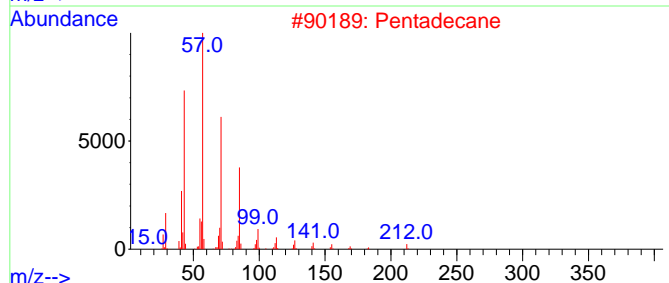
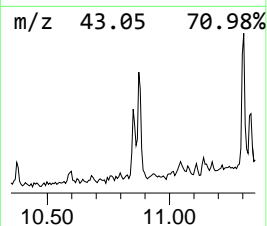
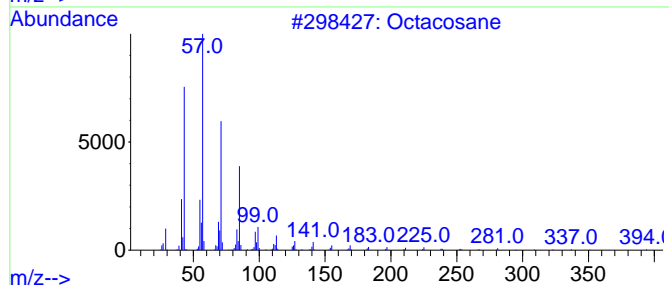
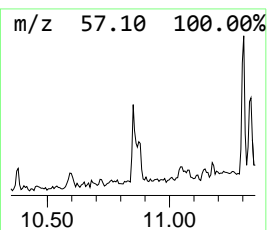
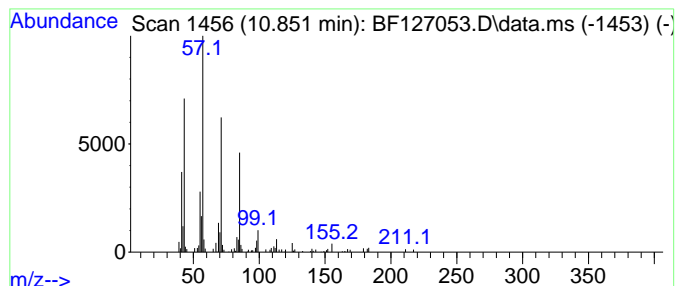
Quant Method : Z:\svoasrv\HPCHEM1\BNA\_F\Methods\8270-BF021622.M  
 Quant Title : ASP BNA STANDARDS FOR 5 POINT CALIBRATION

TIC Library : C:\Database\NIST20.L  
 TIC Integration Parameters: LSCINT.P

\*\*\*\*\*  
 Peak Number 4 Octacosane Concentration Rank 15

R.T.	EstConc	Area	Relative to ISTD	R.T.
10.851	3.66 ng	65903	Phenanthrene-d10	11.451

Hit#	of 5	Tentative ID	MW	MolForm	CAS#	Qual
1		Octacosane	394	C28H58	000630-02-4	91
2		Pentadecane	212	C15H32	000629-62-9	90
3		Heptacosane	380	C27H56	000593-49-7	90
4		Tridecane, 1-iodo-	310	C13H27I	035599-77-0	86
5		Tetracosane	338	C24H50	000646-31-1	86



Data Path : Z:\svoasrv\HPCHEM1\BNA\_F\Data\BF022322\  
 Data File : BF127053.D  
 Acq On : 23 Feb 2022 21:55  
 Operator : CG\JU  
 Sample : N1626-06 5X  
 Misc :  
 ALS Vial : 23 Sample Multiplier: 1

Instrument :  
 BNA\_F  
 ClientSampleId :  
 CC-B3

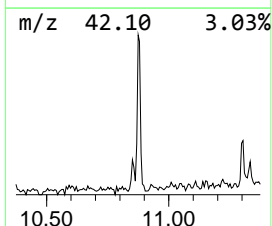
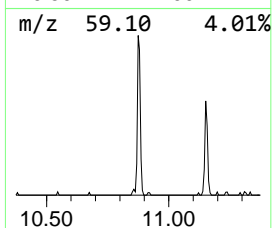
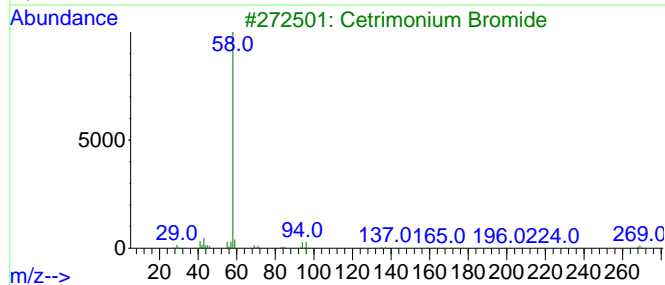
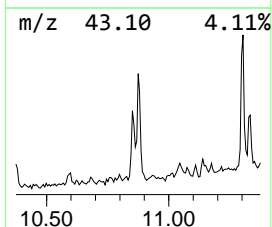
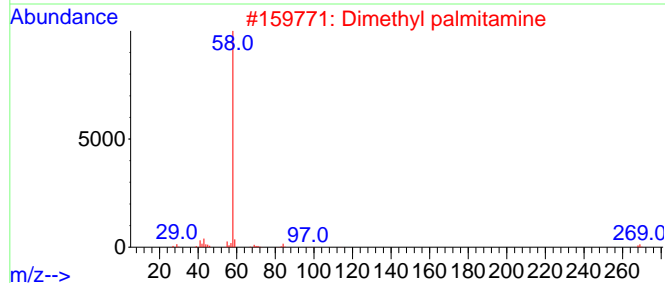
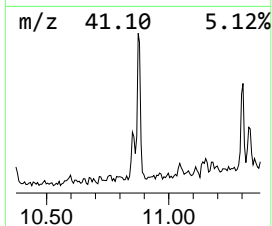
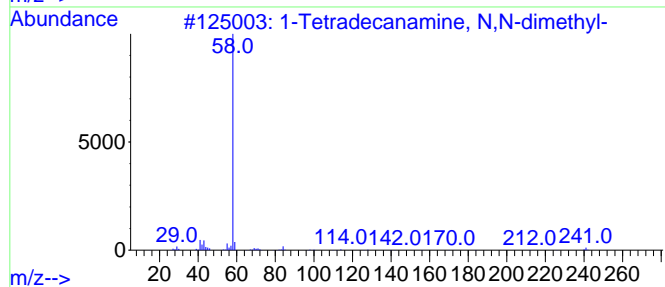
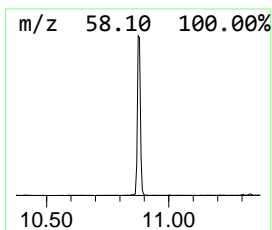
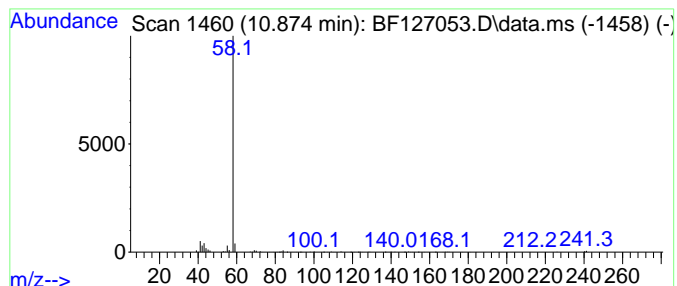
Quant Method : Z:\svoasrv\HPCHEM1\BNA\_F\Methods\8270-BF021622.M  
 Quant Title : ASP BNA STANDARDS FOR 5 POINT CALIBRATION

TIC Library : C:\Database\NIST20.L  
 TIC Integration Parameters: LSCINT.P

\*\*\*\*\*  
 Peak Number 5 1-Tetradecanamine, N,N-dime... Concentration Rank 5

R.T.	EstConc	Area	Relative to ISTD	R.T.
10.874	18.34 ng	330030	Phenanthrene-d10	11.451

Hit#	of	5	Tentative ID	MW	MolForm	CAS#	Qual
1			1-Tetradecanamine, N,N-dimethyl-	241	C16H35N	000112-75-4	78
2			Dimethyl palmitamine	269	C18H39N	000112-69-6	72
3			Cetrimonium Bromide	363	C19H42BrN	000057-09-0	72
4			Dimantine	297	C20H43N	000124-28-7	72
5			Eicosylamine, N,N-dimethyl-	325	C22H47N	1000406-30-5	72





Data Path : Z:\svoasrv\HPCHEM1\BNA\_F\Data\BF022322\  
 Data File : BF127053.D  
 Acq On : 23 Feb 2022 21:55  
 Operator : CG\JU  
 Sample : N1626-06 5X  
 Misc :  
 ALS Vial : 23 Sample Multiplier: 1

Instrument :  
 BNA\_F  
 ClientSampleId :  
 CC-B3

Quant Method : Z:\svoasrv\HPCHEM1\BNA\_F\Methods\8270-BF021622.M  
 Quant Title : ASP BNA STANDARDS FOR 5 POINT CALIBRATION

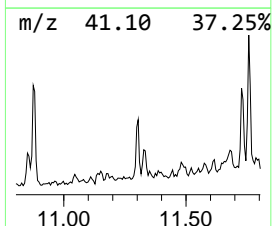
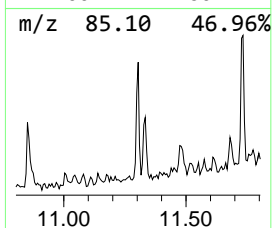
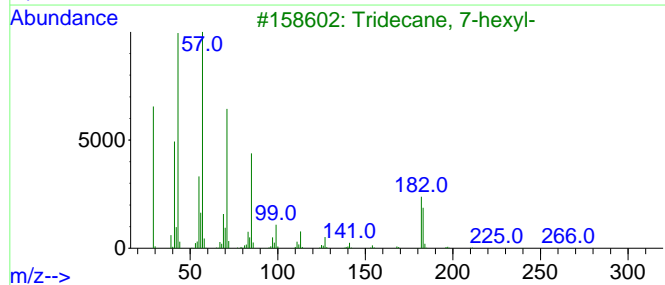
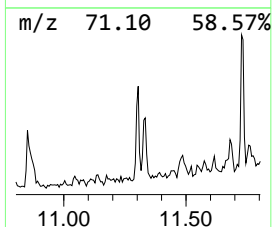
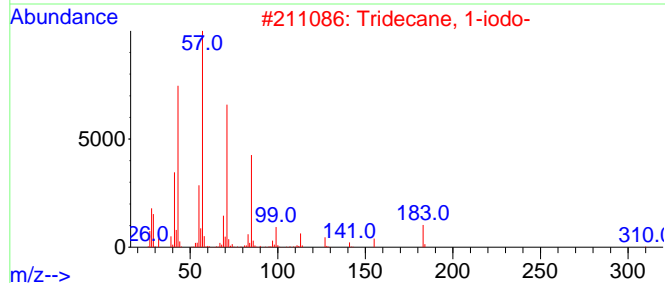
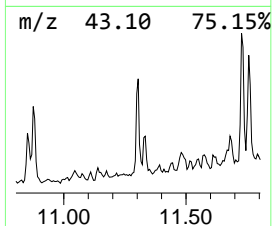
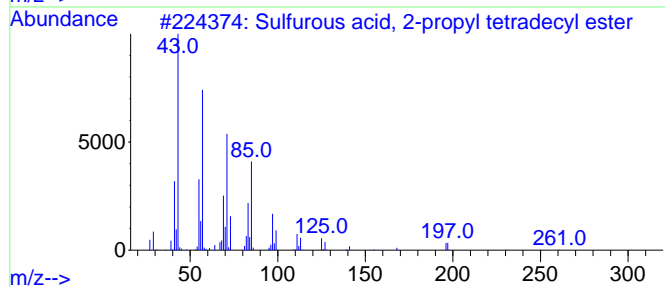
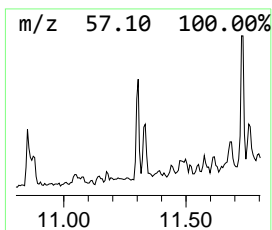
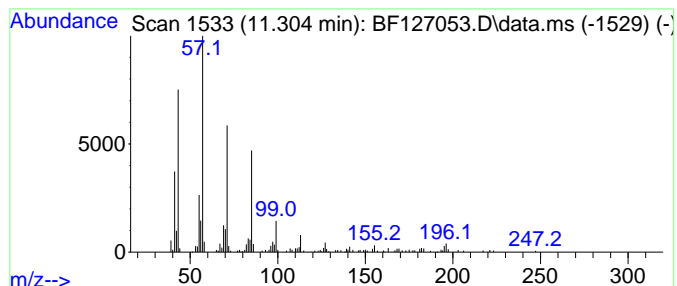
TIC Library : C:\Database\NIST20.L  
 TIC Integration Parameters: LSCINT.P

\*\*\*\*\*  
 Peak Number 6 Sulfurous acid, 2-propyl te... Concentration Rank 12

R.T.	EstConc	Area	Relative to ISTD	R.T.
11.304	6.69 ng	120385	Phenanthrene-d10	11.451

Hit#	of 5	Tentative ID	MW	MolForm	CAS#	Qual
1		Sulfurous acid, 2-propyl tetradecyl ester	320	C17H36O3S	1010309-12-5	87
2		Tridecane, 1-iodo-	310	C13H27I	035599-77-0	87
3		Tridecane, 7-hexyl-	268	C19H40	007225-66-3	87
4		Hexadecane, 1-iodo-	352	C16H33I	000544-77-4	86
5		Nonadecane	268	C19H40	000629-92-5	83



Data Path : Z:\svoasrv\HPCHEM1\BNA\_F\Data\BF022322\  
 Data File : BF127053.D  
 Acq On : 23 Feb 2022 21:55  
 Operator : CG\JU  
 Sample : N1626-06 5X  
 Misc :  
 ALS Vial : 23 Sample Multiplier: 1

Instrument :  
 BNA\_F  
 ClientSampleId :  
 CC-B3

Quant Method : Z:\svoasrv\HPCHEM1\BNA\_F\Methods\8270-BF021622.M  
 Quant Title : ASP BNA STANDARDS FOR 5 POINT CALIBRATION

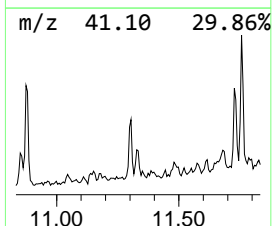
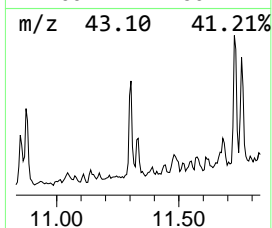
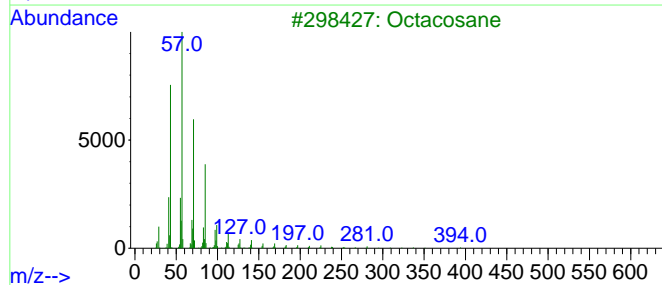
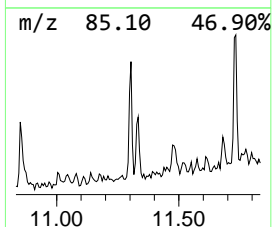
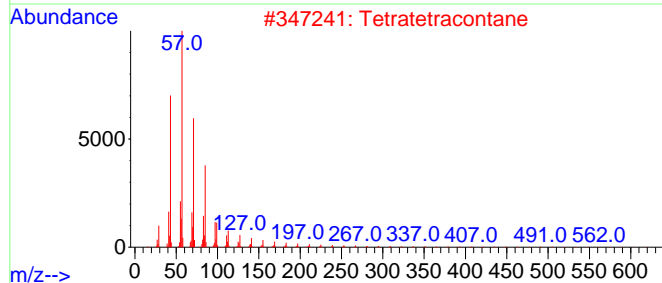
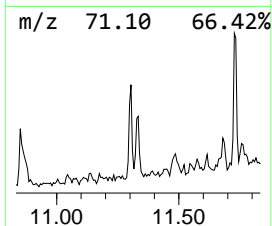
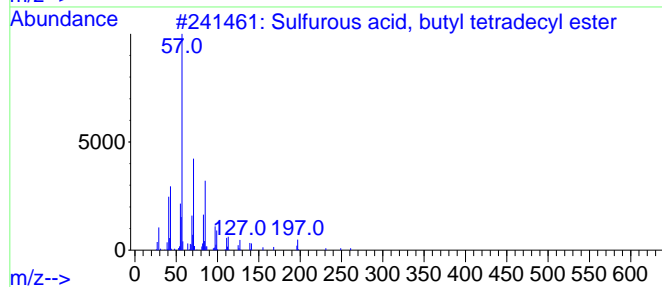
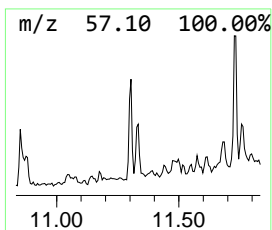
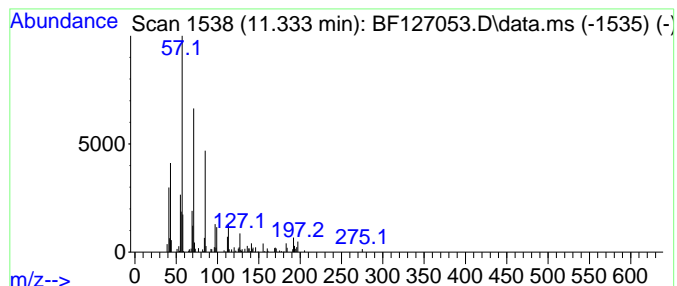
TIC Library : C:\Database\NIST20.L  
 TIC Integration Parameters: LSCINT.P

\*\*\*\*\*  
 Peak Number 7 Sulfurous acid, butyl tetra... Concentration Rank 17

R.T.	EstConc	Area	Relative to ISTD	R.T.
11.333	3.20 ng	57548	Phenanthrene-d10	11.451

Hit# of 5	Tentative ID	MW	MolForm	CAS#	Qual
1	Sulfurous acid, butyl tetradecyl...	334	C18H38O3S	1010309-18-1	90
2	Tetratetracontane	619	C44H90	007098-22-8	87
3	Octacosane	394	C28H58	000630-02-4	87
4	Sulfurous acid, butyl pentadecyl...	348	C19H40O3S	1000309-18-2	86
5	Hexatriacontane	507	C36H74	000630-06-8	86



Data Path : Z:\svoasrv\HPCHEM1\BNA\_F\Data\BF022322\  
 Data File : BF127053.D  
 Acq On : 23 Feb 2022 21:55  
 Operator : CG\JU  
 Sample : N1626-06 5X  
 Misc :  
 ALS Vial : 23 Sample Multiplier: 1

Instrument :  
 BNA\_F  
 ClientSampleId :  
 CC-B3

Quant Method : Z:\svoasrv\HPCHEM1\BNA\_F\Methods\8270-BF021622.M  
 Quant Title : ASP BNA STANDARDS FOR 5 POINT CALIBRATION

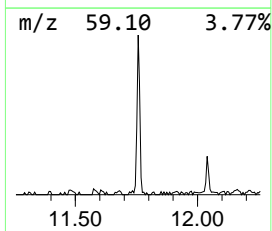
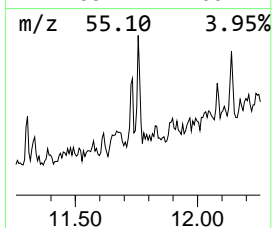
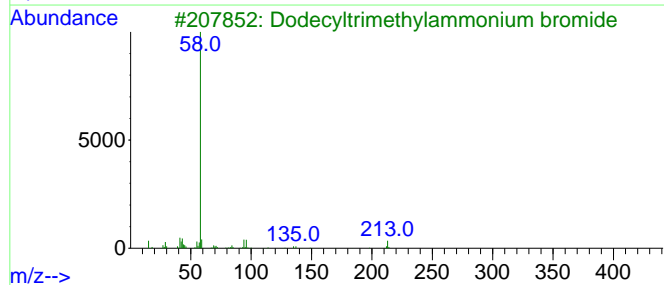
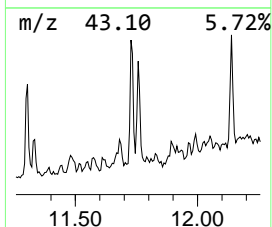
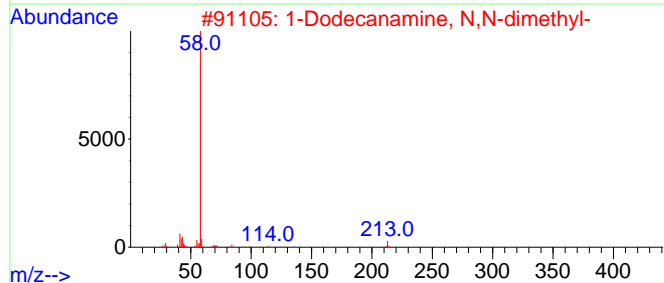
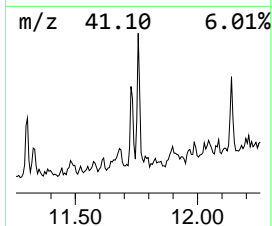
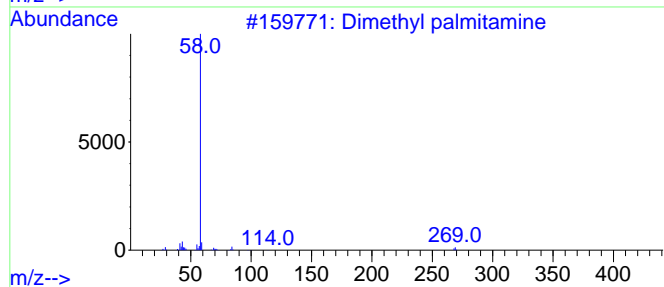
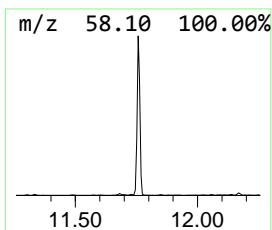
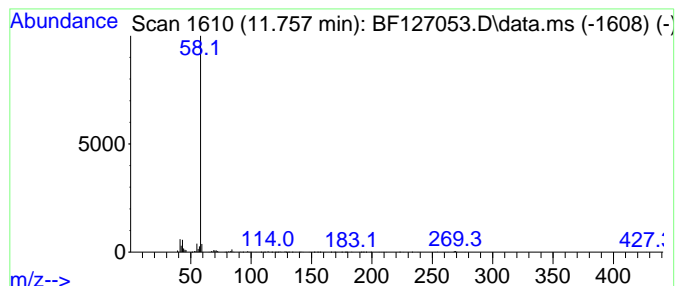
TIC Library : C:\Database\NIST20.L  
 TIC Integration Parameters: LSCINT.P

\*\*\*\*\*  
 Peak Number 8 Dimethyl palmitamine Concentration Rank 3

R.T.	EstConc	Area	Relative to ISTD	R.T.
11.757	21.36 ng	384428	Phenanthrene-d10	11.451

Hit#	of	Tentative ID	MW	MolForm	CAS#	Qual
1	5	Dimethyl palmitamine	269	C18H39N	000112-69-6	90
2		1-Dodecanamine, N,N-dimethyl-	213	C14H31N	000112-18-5	78
3		Dodecyltrimethylammonium bromide	307	C15H34BrN	001119-94-4	78
4		Cetrimonium Bromide	363	C19H42BrN	000057-09-0	78
5		Tetracosylamine, N,N-dimethyl-	381	C26H55N	1000406-30-7	78



Data Path : Z:\svoasrv\HPCHEM1\BNA\_F\Data\BF022322\  
 Data File : BF127053.D  
 Acq On : 23 Feb 2022 21:55  
 Operator : CG\JU  
 Sample : N1626-06 5X  
 Misc :  
 ALS Vial : 23 Sample Multiplier: 1

Instrument :  
 BNA\_F  
 ClientSampleId :  
 CC-B3

Quant Method : Z:\svoasrv\HPCHEM1\BNA\_F\Methods\8270-BF021622.M  
 Quant Title : ASP BNA STANDARDS FOR 5 POINT CALIBRATION

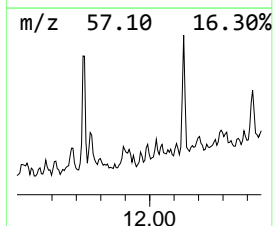
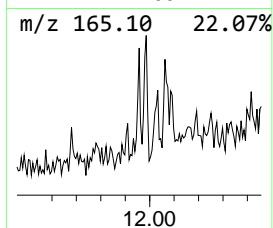
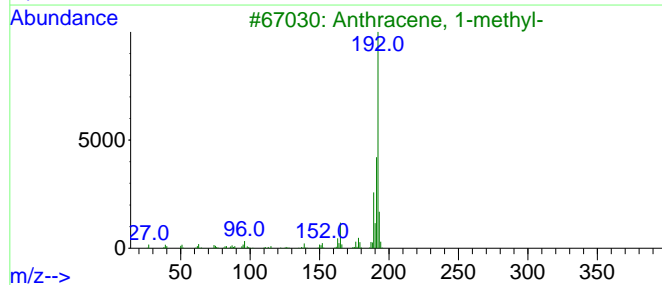
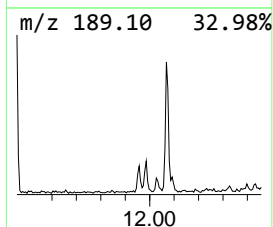
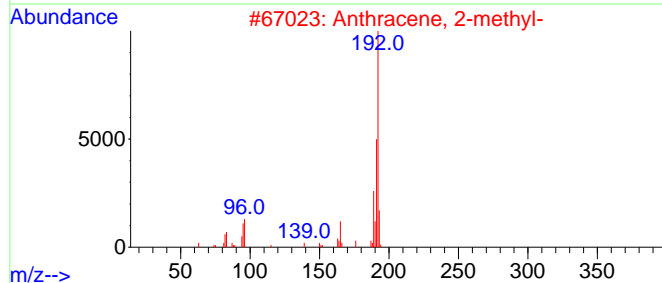
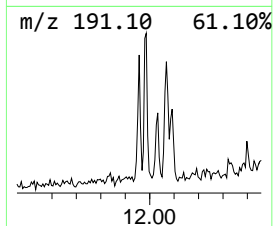
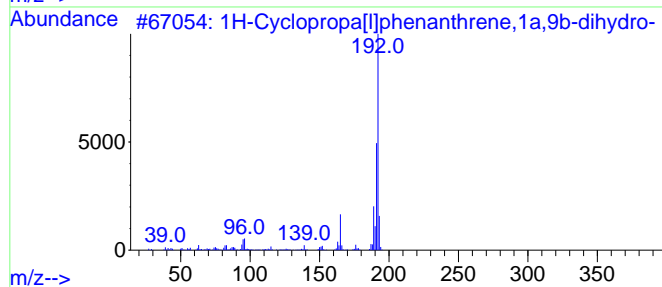
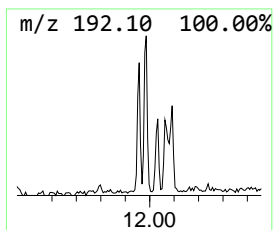
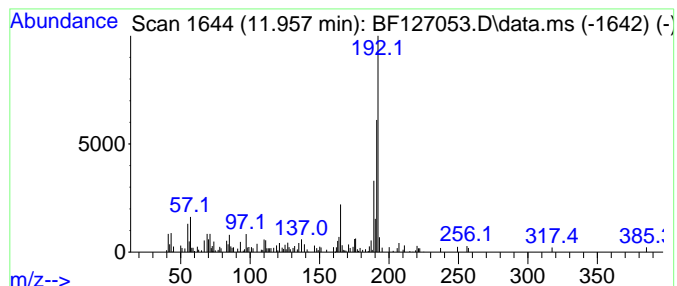
TIC Library : C:\Database\NIST20.L  
 TIC Integration Parameters: LSCINT.P

\*\*\*\*\*  
 Peak Number 9 1H-Cyclopropa[1]phenanthren... Concentration Rank 20

R.T.	EstConc	Area	Relative to ISTD	R.T.
11.957	2.79 ng	50238	Phenanthrene-d10	11.451

Hit#	of 5	Tentative ID	MW	MolForm	CAS#	Qual
1		1H-Cyclopropa[1]phenanthrene,1a,...	192	C15H12	000949-41-7	81
2		Anthracene, 2-methyl-	192	C15H12	000613-12-7	81
3		Anthracene, 1-methyl-	192	C15H12	000610-48-0	76
4		Phenanthrene, 2-methyl-	192	C15H12	002531-84-2	74
5		Anthracene, 9-methyl-	192	C15H12	000779-02-2	74



Data Path : Z:\svoasrv\HPCHEM1\BNA\_F\Data\BF022322\  
 Data File : BF127053.D  
 Acq On : 23 Feb 2022 21:55  
 Operator : CG\JU  
 Sample : N1626-06 5X  
 Misc :  
 ALS Vial : 23 Sample Multiplier: 1

Instrument :  
 BNA\_F  
 ClientSampleId :  
 CC-B3

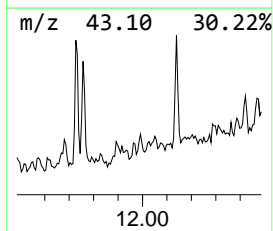
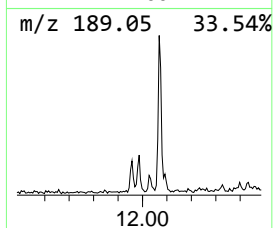
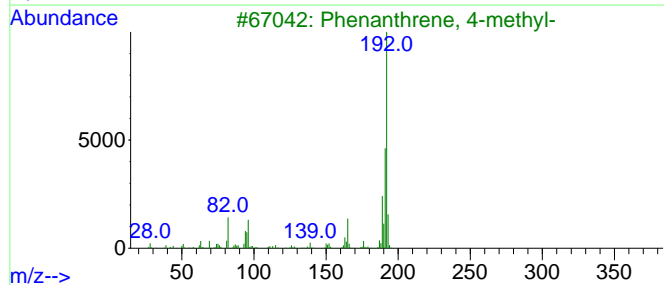
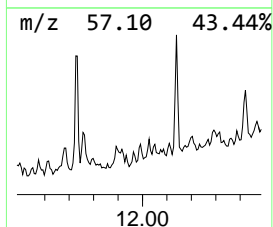
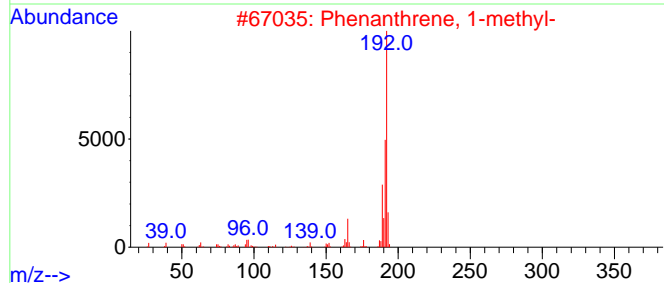
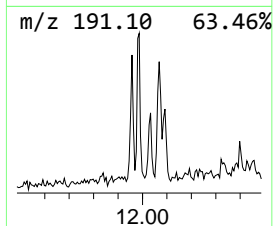
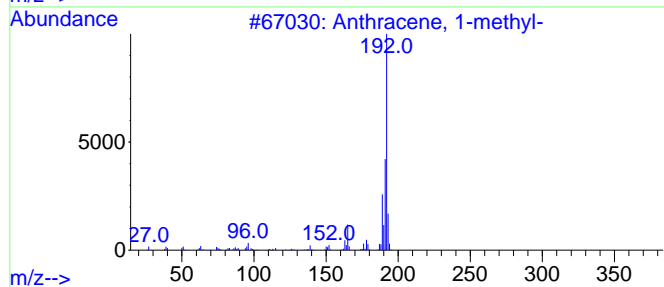
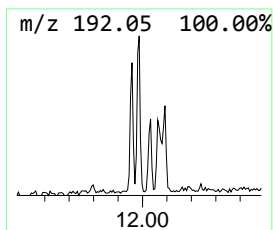
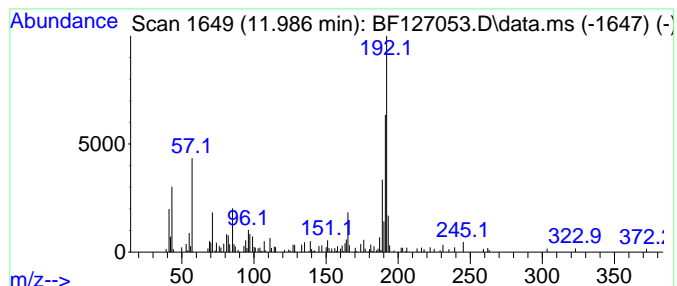
Quant Method : Z:\svoasrv\HPCHEM1\BNA\_F\Methods\8270-BF021622.M  
 Quant Title : ASP BNA STANDARDS FOR 5 POINT CALIBRATION

TIC Library : C:\Database\NIST20.L  
 TIC Integration Parameters: LSCINT.P

\*\*\*\*\*  
 Peak Number 10 Anthracene, 1-methyl- Concentration Rank 16

R.T.	EstConc	Area	Relative to ISTD	R.T.
11.986	3.34 ng	60057	Phenanthrene-d10	11.451

Hit#	of	5	Tentative ID	MW	MolForm	CAS#	Qual
1			Anthracene, 1-methyl-	192	C15H12	000610-48-0	86
2			Phenanthrene, 1-methyl-	192	C15H12	000832-69-9	76
3			Phenanthrene, 4-methyl-	192	C15H12	000832-64-4	76
4			Anthracene, 9-methyl-	192	C15H12	000779-02-2	76
5			Phenanthrene, 3-methyl-	192	C15H12	000832-71-3	76



Data Path : Z:\svoasrv\HPCHEM1\BNA\_F\Data\BF022322\  
 Data File : BF127053.D  
 Acq On : 23 Feb 2022 21:55  
 Operator : CG\JU  
 Sample : N1626-06 5X  
 Misc :  
 ALS Vial : 23 Sample Multiplier: 1

Instrument :  
 BNA\_F  
 ClientSampleId :  
 CC-B3

Quant Method : Z:\svoasrv\HPCHEM1\BNA\_F\Methods\8270-BF021622.M  
 Quant Title : ASP BNA STANDARDS FOR 5 POINT CALIBRATION

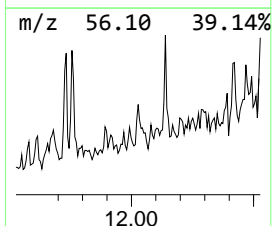
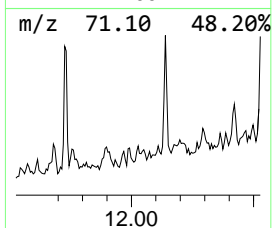
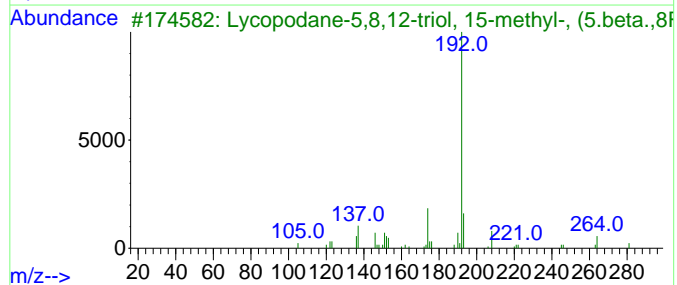
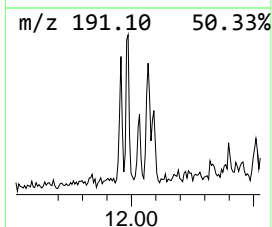
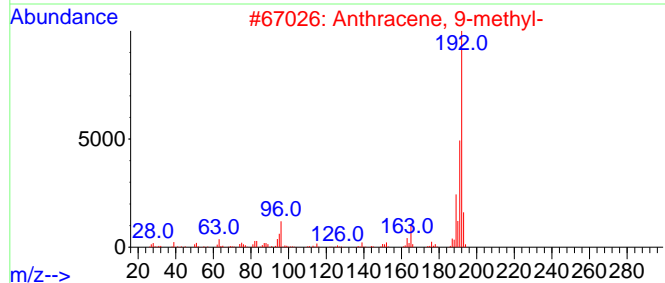
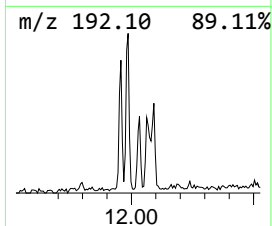
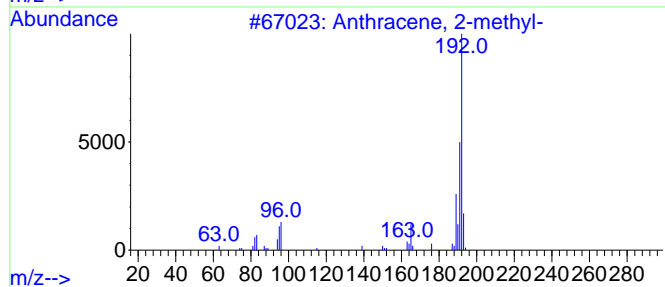
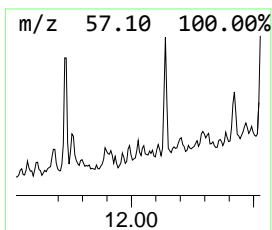
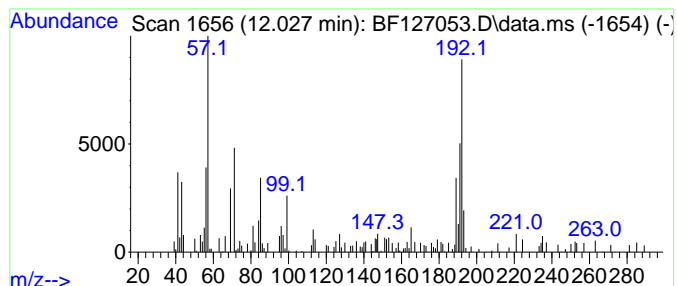
TIC Library : C:\Database\NIST20.L  
 TIC Integration Parameters: LSCINT.P

\*\*\*\*\*  
 Peak Number 11 Anthracene, 2-methyl- Concentration Rank 18

R.T.	EstConc	Area	Relative to ISTD	R.T.
12.027	2.99 ng	53804	Phenanthrene-d10	11.451

Hit#	of 5	Tentative ID	MW	MolForm	CAS#	Qual
1		Anthracene, 2-methyl-	192	C15H12	000613-12-7	70
2		Anthracene, 9-methyl-	192	C15H12	000779-02-2	66
3		Lycopodane-5,8,12-triol, 15-meth...	281	C16H27NO3	003175-91-5	60
4		1H-Indene, 1-phenyl-	192	C15H12	001961-96-2	46
5		Phenanthrene, 3-methyl-	192	C15H12	000832-71-3	46



Data Path : Z:\svoasrv\HPCHEM1\BNA\_F\Data\BF022322\  
 Data File : BF127053.D  
 Acq On : 23 Feb 2022 21:55  
 Operator : CG\JU  
 Sample : N1626-06 5X  
 Misc :  
 ALS Vial : 23 Sample Multiplier: 1

Instrument :  
 BNA\_F  
 ClientSampleId :  
 CC-B3

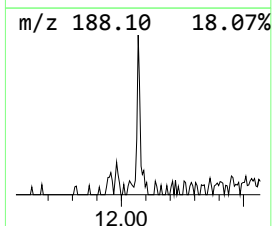
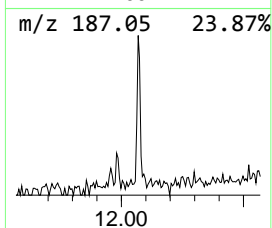
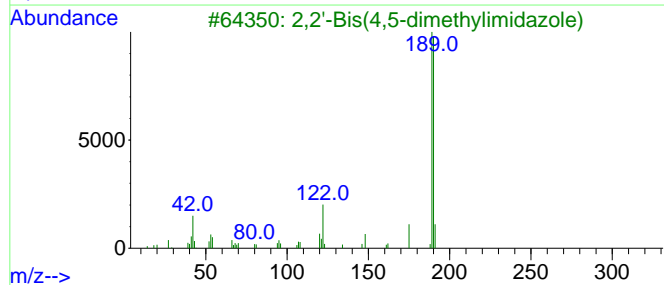
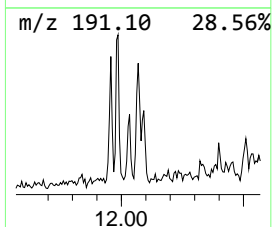
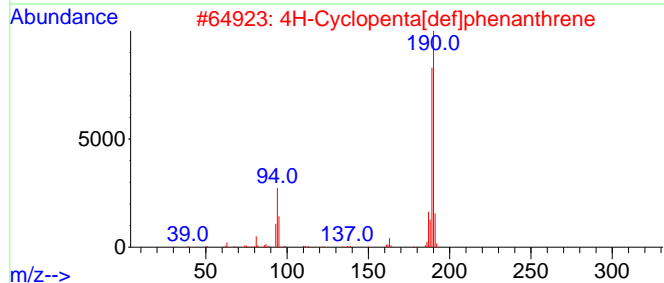
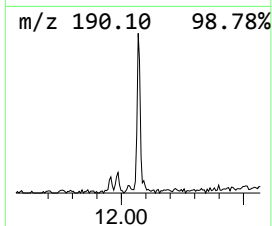
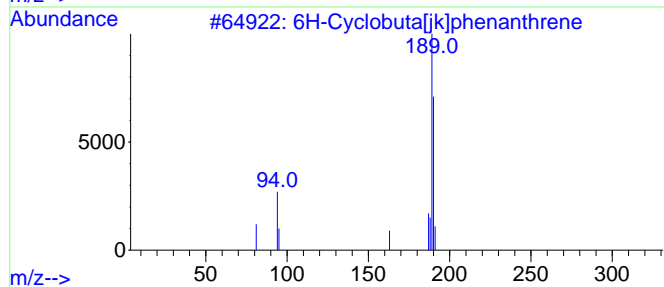
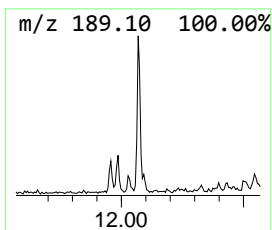
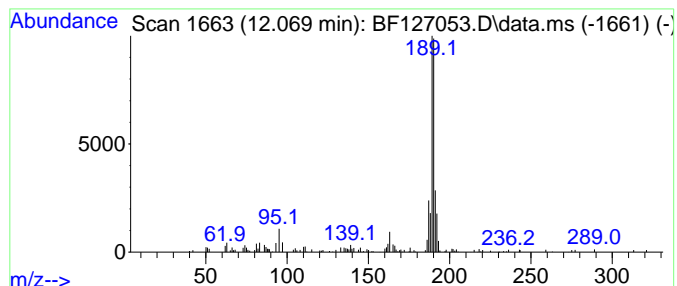
Quant Method : Z:\svoasrv\HPCHEM1\BNA\_F\Methods\8270-BF021622.M  
 Quant Title : ASP BNA STANDARDS FOR 5 POINT CALIBRATION

TIC Library : C:\Database\NIST20.L  
 TIC Integration Parameters: LSCINT.P

\*\*\*\*\*  
 Peak Number 12 6H-Cyclobuta[jk]phenanthrene Concentration Rank 14

R.T.	EstConc	Area	Relative to ISTD	R.T.
12.069	5.87 ng	105645	Phenanthrene-d10	11.451

Hit#	of	5	Tentative ID	MW	MolForm	CAS#	Qual
1			6H-Cyclobuta[jk]phenanthrene	190	C15H10	083469-43-6	80
2			4H-Cyclopenta[def]phenanthrene	190	C15H10	000203-64-5	80
3			2,2'-Bis(4,5-dimethylimidazole)	190	C10H14N4	069286-06-2	36
4			Cyclohexanone, 2-(2-furanylmethy...	190	C12H14O2	056053-07-7	35
5			3,3',5,5'-Tetramethyl-2,2'-bifuryl	190	C12H14O2	222187-59-9	35



Data Path : Z:\svoasrv\HPCHEM1\BNA\_F\Data\BF022322\  
 Data File : BF127053.D  
 Acq On : 23 Feb 2022 21:55  
 Operator : CG\JU  
 Sample : N1626-06 5X  
 Misc :  
 ALS Vial : 23 Sample Multiplier: 1

Instrument :  
 BNA\_F  
 ClientSampleId :  
 CC-B3

Quant Method : Z:\svoasrv\HPCHEM1\BNA\_F\Methods\8270-BF021622.M  
 Quant Title : ASP BNA STANDARDS FOR 5 POINT CALIBRATION

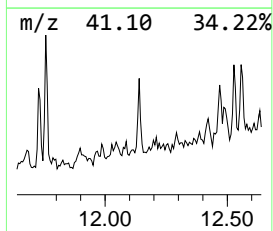
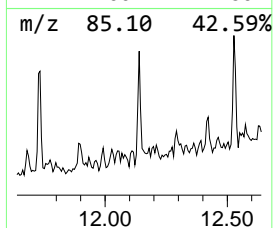
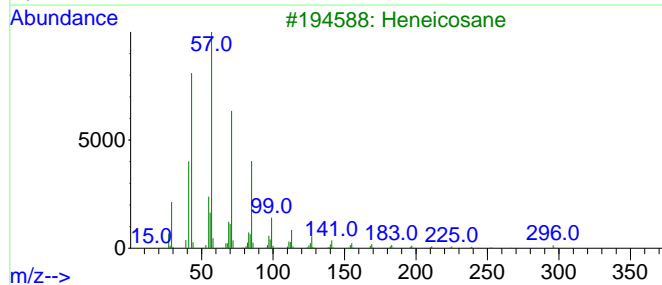
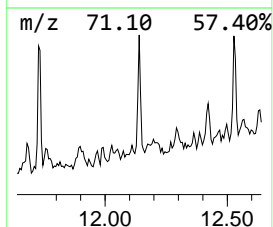
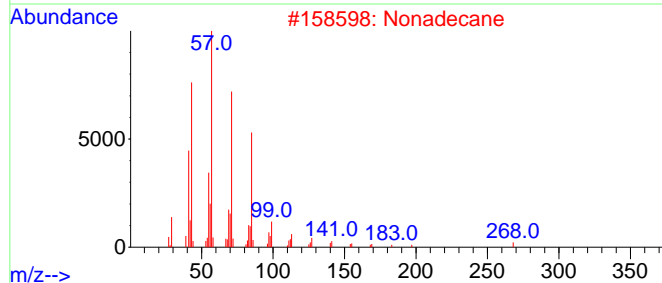
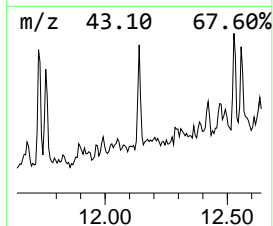
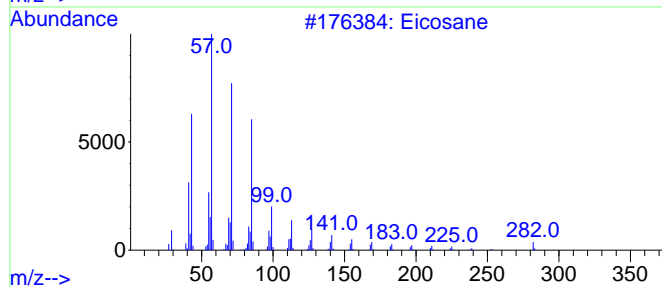
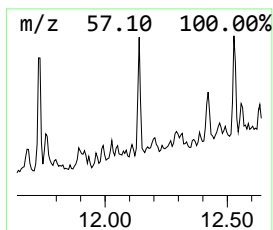
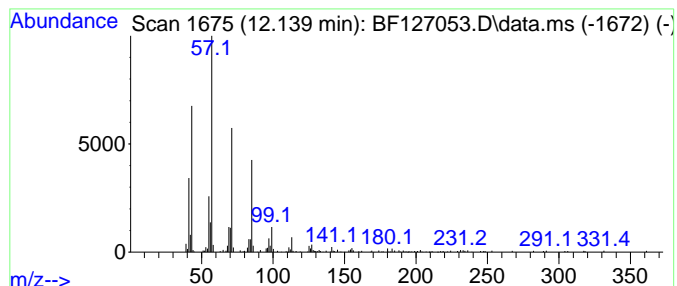
TIC Library : C:\Database\NIST20.L  
 TIC Integration Parameters: LSCINT.P

\*\*\*\*\*  
 Peak Number 13 Eicosane Concentration Rank 9

R.T.	EstConc	Area	Relative to ISTD	R.T.
12.139	7.44 ng	133921	Phenanthrene-d10	11.451

Hit#	of 5	Tentative ID	MW	MolForm	CAS#	Qual
1		Eicosane	282	C20H42	000112-95-8	95
2		Nonadecane	268	C19H40	000629-92-5	87
3		Heneicosane	296	C21H44	000629-94-7	72
4		Heptadecane	240	C17H36	000629-78-7	72
5		Heptacosane	380	C27H56	000593-49-7	72





Data Path : Z:\svoasrv\HPCHEM1\BNA\_F\Data\BF022322\  
 Data File : BF127053.D  
 Acq On : 23 Feb 2022 21:55  
 Operator : CG\JU  
 Sample : N1626-06 5X  
 Misc :  
 ALS Vial : 23 Sample Multiplier: 1

Instrument :  
 BNA\_F  
 ClientSampleId :  
 CC-B3

Quant Method : Z:\svoasrv\HPCHEM1\BNA\_F\Methods\8270-BF021622.M  
 Quant Title : ASP BNA STANDARDS FOR 5 POINT CALIBRATION

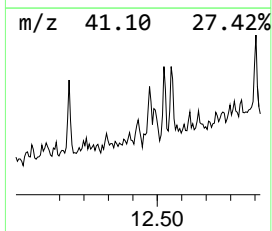
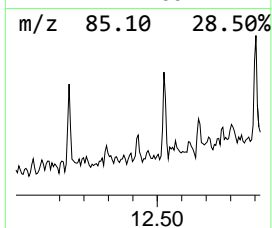
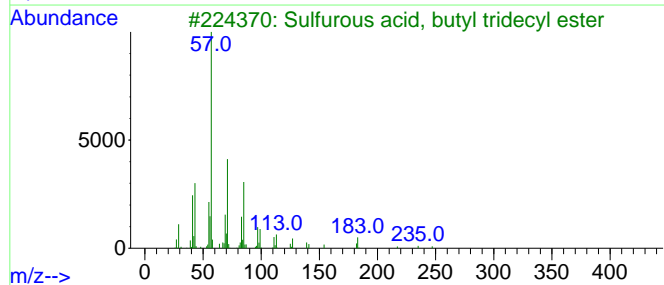
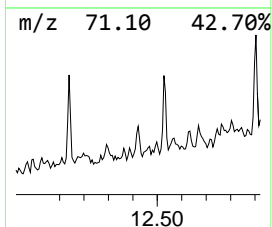
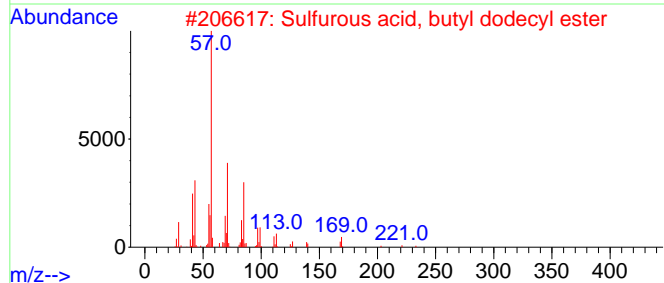
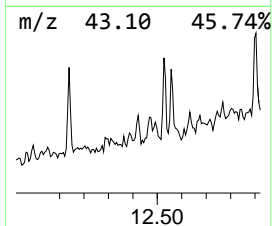
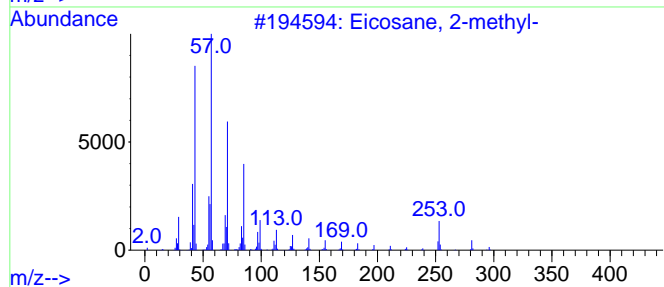
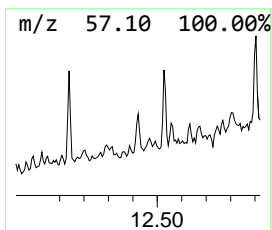
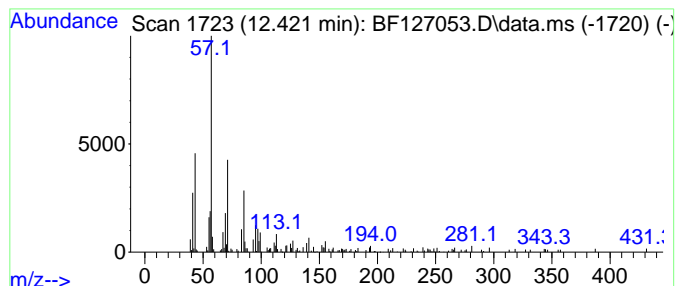
TIC Library : C:\Database\NIST20.L  
 TIC Integration Parameters: LSCINT.P

\*\*\*\*\*  
 Peak Number 14 Eicosane, 2-methyl- Concentration Rank 19

R.T.	EstConc	Area	Relative to ISTD	R.T.
12.422	2.97 ng	53355	Phenanthrene-d10	11.451

Hit#	of 5	Tentative ID	MW	MolForm	CAS#	Qual
1		Eicosane, 2-methyl-	296	C21H44	001560-84-5	89
2		Sulfurous acid, butyl dodecyl ester	306	C16H34O3S	1000309-17-9	72
3		Sulfurous acid, butyl tridecyl e...	320	C17H36O3S	1000309-18-0	72
4		Decane, 3,8-dimethyl-	170	C12H26	017312-55-9	68
5		Dodecane, 1-iodo-	296	C12H25I	004292-19-7	68



Data Path : Z:\svoasrv\HPCHEM1\BNA\_F\Data\BF022322\  
 Data File : BF127053.D  
 Acq On : 23 Feb 2022 21:55  
 Operator : CG\JU  
 Sample : N1626-06 5X  
 Misc :  
 ALS Vial : 23 Sample Multiplier: 1

Instrument :  
 BNA\_F  
 ClientSampleId :  
 CC-B3

Quant Method : Z:\svoasrv\HPCHEM1\BNA\_F\Methods\8270-BF021622.M  
 Quant Title : ASP BNA STANDARDS FOR 5 POINT CALIBRATION

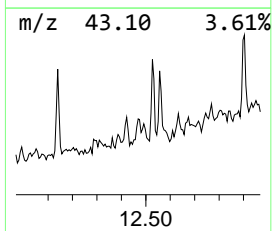
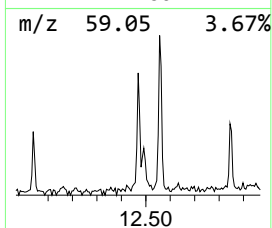
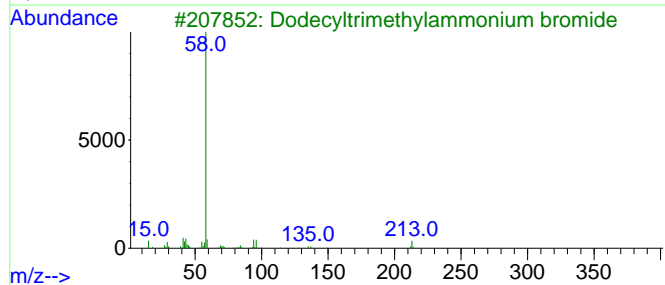
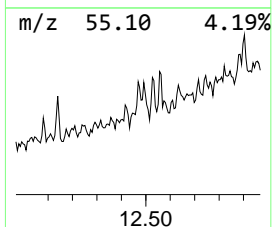
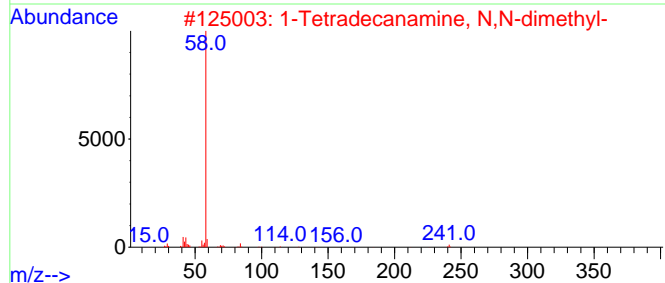
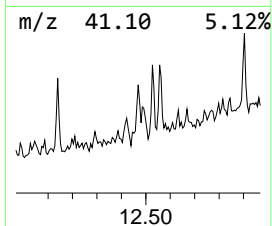
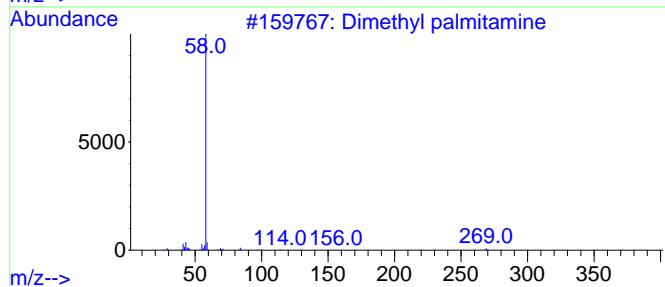
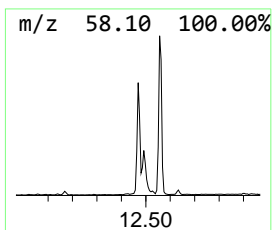
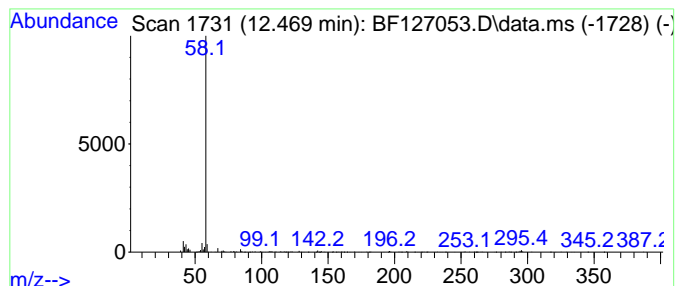
TIC Library : C:\Database\NIST20.L  
 TIC Integration Parameters: LSCINT.P

\*\*\*\*\*  
 Peak Number 15 Dodecyltrimethylammonium br... Concentration Rank 7

R.T.	EstConc	Area	Relative to ISTD	R.T.
12.469	10.18 ng	183162	Phenanthrene-d10	11.451

Hit#	of	5	Tentative ID	MW	MolForm	CAS#	Qual
1			Dimethyl palmitamine	269	C18H39N	000112-69-6	78
2			1-Tetradecanamine, N,N-dimethyl-	241	C16H35N	000112-75-4	78
3			Dodecyltrimethylammonium bromide	307	C15H34BrN	001119-94-4	78
4			1-Pentadecanamine, N,N-dimethyl-	255	C17H37N	017678-60-3	72
5			1-Undecanamine, N,N-dimethyl-	199	C13H29N	017373-28-3	72



Data Path : Z:\svoasrv\HPCHEM1\BNA\_F\Data\BF022322\  
 Data File : BF127053.D  
 Acq On : 23 Feb 2022 21:55  
 Operator : CG\JU  
 Sample : N1626-06 5X  
 Misc :  
 ALS Vial : 23 Sample Multiplier: 1

Instrument :  
 BNA\_F  
 ClientSampleId :  
 CC-B3

Quant Method : Z:\svoasrv\HPCHEM1\BNA\_F\Methods\8270-BF021622.M  
 Quant Title : ASP BNA STANDARDS FOR 5 POINT CALIBRATION

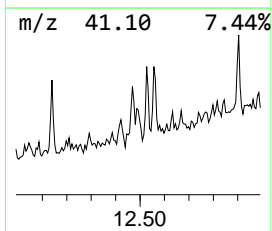
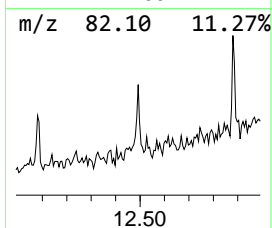
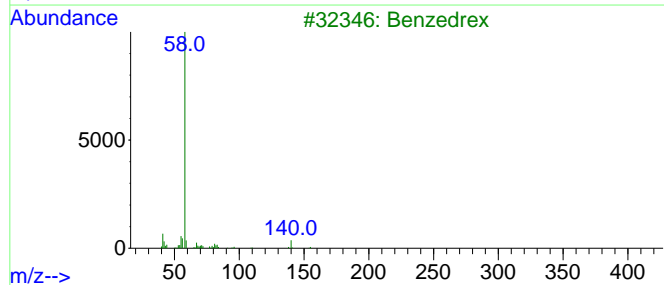
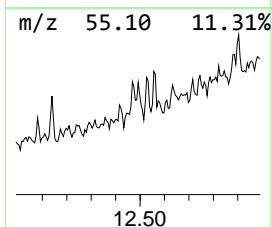
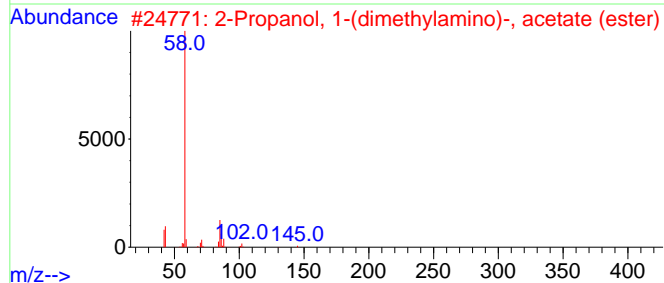
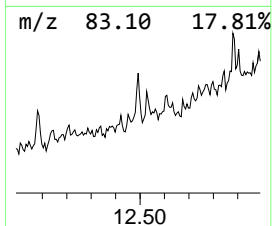
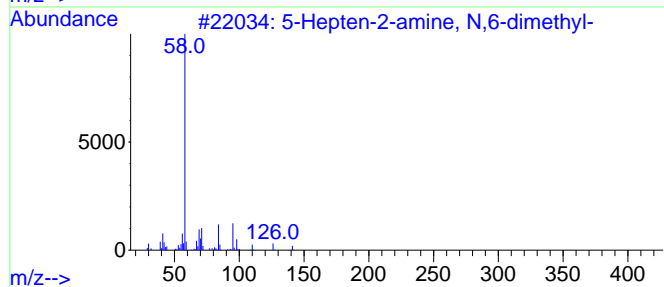
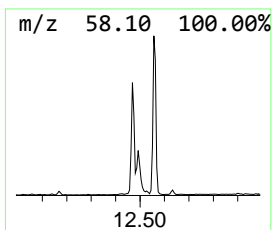
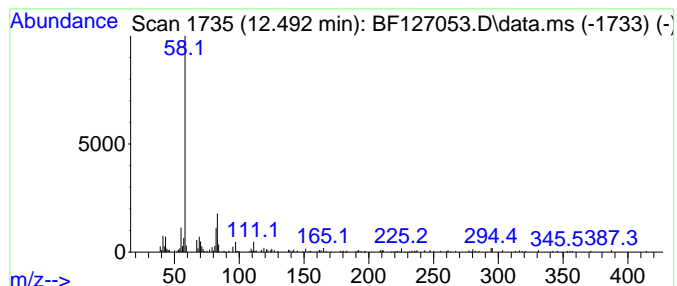
TIC Library : C:\Database\NIST20.L  
 TIC Integration Parameters: LSCINT.P

\*\*\*\*\*  
 Peak Number 16 5-Hepten-2-amine, N,6-dimet... Concentration Rank 13

R.T.	EstConc	Area	Relative to ISTD	R.T.
12.492	6.18 ng	111267	Phenanthrene-d10	11.451

Hit#	of 5	Tentative ID	MW	MolForm	CAS#	Qual
1		5-Hepten-2-amine, N,6-dimethyl-	141	C9H19N	000503-01-5	50
2		2-Propanol, 1-(dimethylamino)-, ...	145	C7H15NO2	032188-28-6	50
3		Benzedrex	155	C10H21N	000101-40-6	50
4		Sumatriptan	295	C14H21N3O2S	103628-46-2	50
5		Lauramide, N-(2-phenylethyl)-N-e...	331	C22H37NO	1000490-83-5	49



Data Path : Z:\svoasrv\HPCHEM1\BNA\_F\Data\BF022322\  
 Data File : BF127053.D  
 Acq On : 23 Feb 2022 21:55  
 Operator : CG\JU  
 Sample : N1626-06 5X  
 Misc :  
 ALS Vial : 23 Sample Multiplier: 1

Instrument :  
 BNA\_F  
 ClientSampleId :  
 CC-B3

Quant Method : Z:\svoasrv\HPCHEM1\BNA\_F\Methods\8270-BF021622.M  
 Quant Title : ASP BNA STANDARDS FOR 5 POINT CALIBRATION

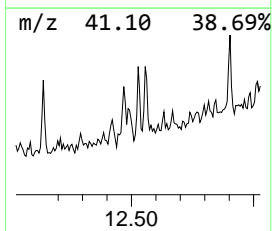
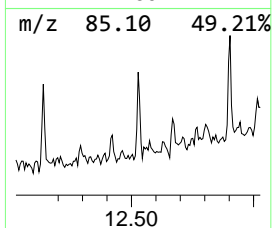
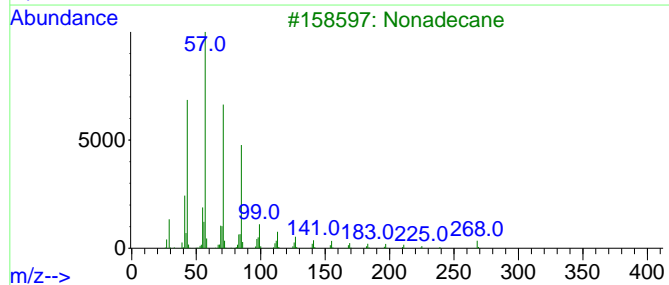
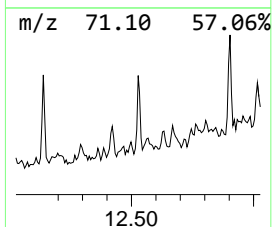
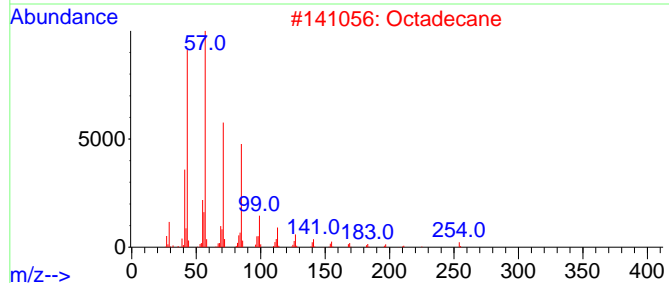
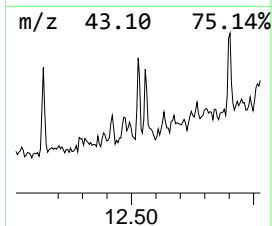
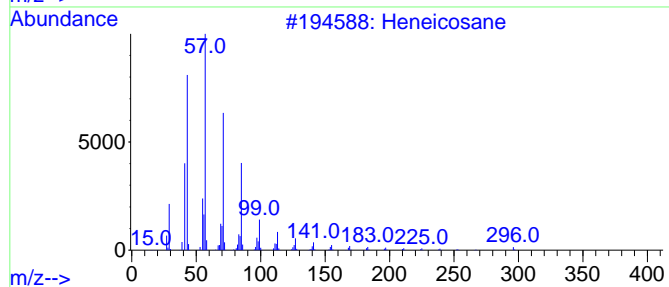
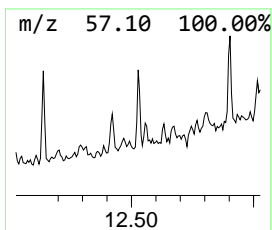
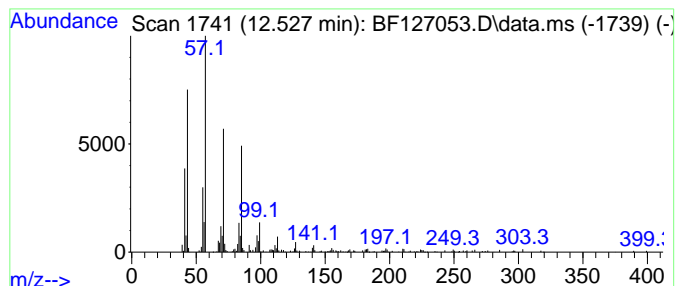
TIC Library : C:\Database\NIST20.L  
 TIC Integration Parameters: LSCINT.P

\*\*\*\*\*  
 Peak Number 17 Heneicosane Concentration Rank 11

R.T.	EstConc	Area	Relative to ISTD	R.T.
12.527	6.73 ng	121128	Phenanthrene-d10	11.451

Hit#	of 5	Tentative ID	MW	MolForm	CAS#	Qual
1		Heneicosane	296	C21H44	000629-94-7	90
2		Octadecane	254	C18H38	000593-45-3	83
3		Nonadecane	268	C19H40	000629-92-5	80
4		Tetradecane	198	C14H30	000629-59-4	80
5		Heptadecane, 2,6,10,15-tetramethyl-	296	C21H44	054833-48-6	78



Data Path : Z:\svoasrv\HPCHEM1\BNA\_F\Data\BF022322\  
 Data File : BF127053.D  
 Acq On : 23 Feb 2022 21:55  
 Operator : CG\JU  
 Sample : N1626-06 5X  
 Misc :  
 ALS Vial : 23 Sample Multiplier: 1

Instrument :  
 BNA\_F  
 ClientSampleId :  
 CC-B3

Quant Method : Z:\svoasrv\HPCHEM1\BNA\_F\Methods\8270-BF021622.M  
 Quant Title : ASP BNA STANDARDS FOR 5 POINT CALIBRATION

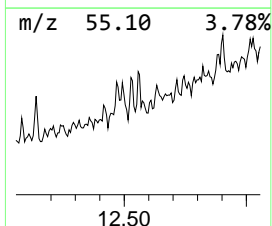
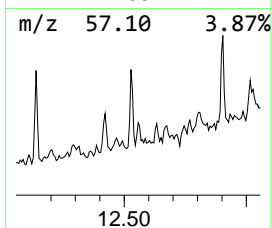
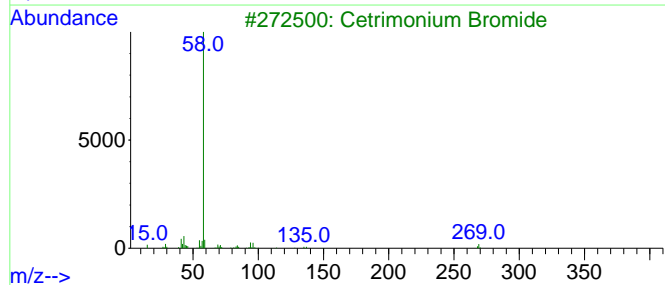
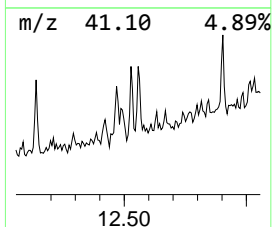
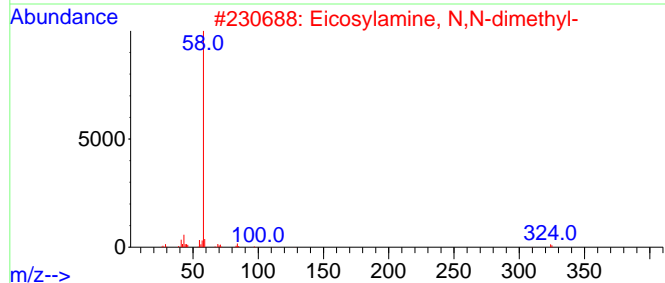
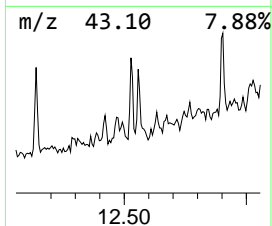
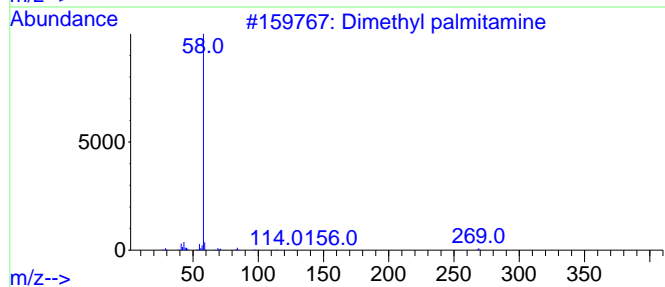
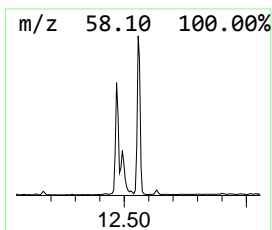
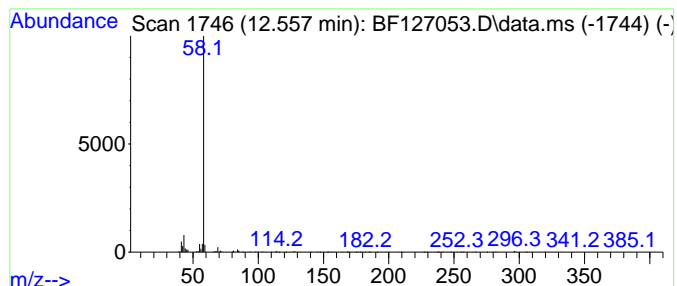
TIC Library : C:\Database\NIST20.L  
 TIC Integration Parameters: LSCINT.P

\*\*\*\*\*  
 Peak Number 18 Eicosylamine, N,N-dimethyl- Concentration Rank 6

R.T.	EstConc	Area	Relative to ISTD	R.T.
12.557	15.07 ng	271230	Phenanthrene-d10	11.451

Hit#	of 5	Tentative ID	MW	MolForm	CAS#	Qual
1		Dimethyl palmitamine	269	C18H39N	000112-69-6	83
2		Eicosylamine, N,N-dimethyl-	325	C22H47N	1000406-30-5	78
3		Cetrimonium Bromide	363	C19H42BrN	000057-09-0	78
4		1-Dodecanamine, N,N-dimethyl-	213	C14H31N	000112-18-5	78
5		Dodecyltrimethylammonium bromide	307	C15H34BrN	001119-94-4	78



Data Path : Z:\svoasrv\HPCHEM1\BNA\_F\Data\BF022322\  
 Data File : BF127053.D  
 Acq On : 23 Feb 2022 21:55  
 Operator : CG\JU  
 Sample : N1626-06 5X  
 Misc :  
 ALS Vial : 23 Sample Multiplier: 1

Instrument :  
 BNA\_F  
 ClientSampleId :  
 CC-B3

Quant Method : Z:\svoasrv\HPCHEM1\BNA\_F\Methods\8270-BF021622.M  
 Quant Title : ASP BNA STANDARDS FOR 5 POINT CALIBRATION

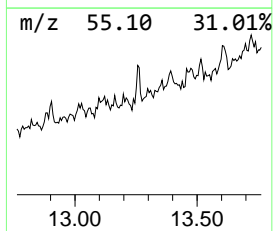
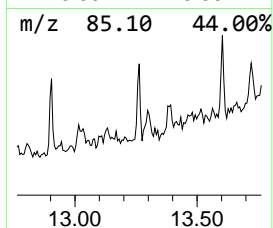
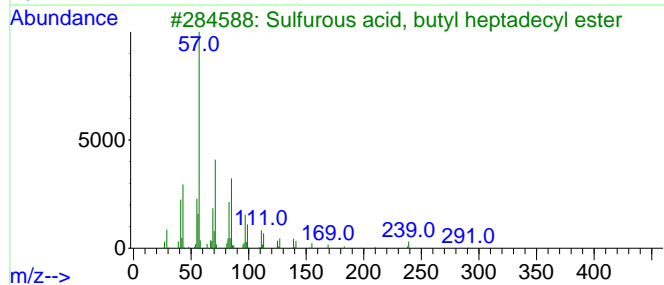
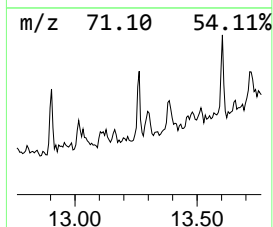
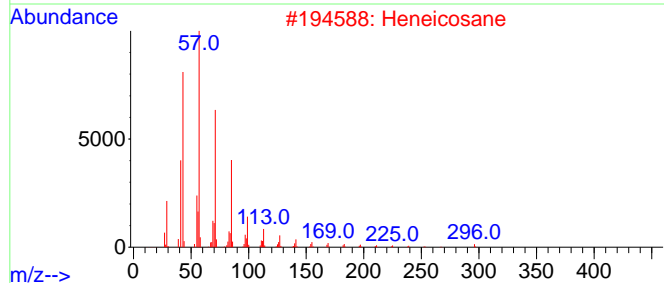
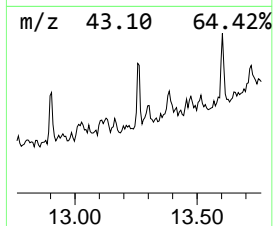
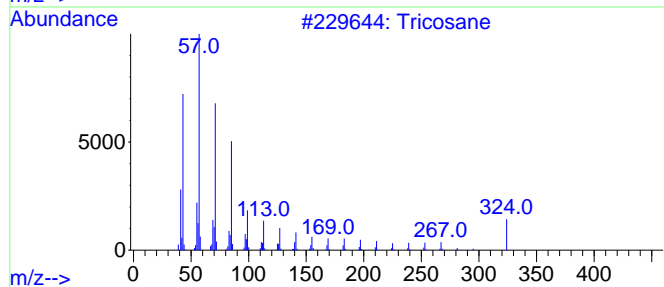
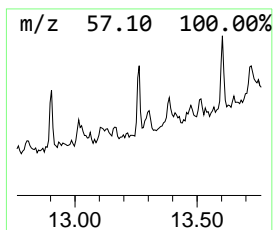
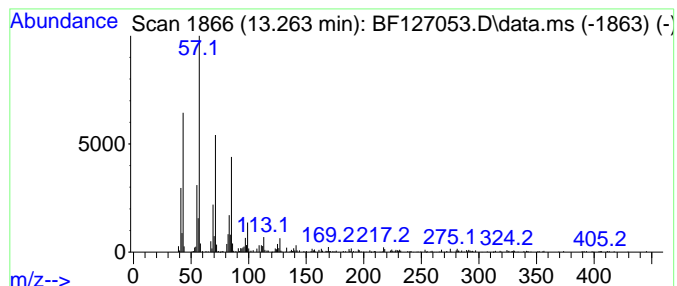
TIC Library : C:\Database\NIST20.L  
 TIC Integration Parameters: LSCINT.P

\*\*\*\*\*  
 Peak Number 19 Tricosane Concentration Rank 2

R.T.	EstConc	Area	Relative to ISTD	R.T.
13.263	25.77 ng	199602	Chrysene-d12	14.104

Hit#	of 5	Tentative ID	MW	MolForm	CAS#	Qual
1		Tricosane	324	C23H48	000638-67-5	87
2		Heneicosane	296	C21H44	000629-94-7	83
3		Sulfurous acid, butyl heptadecyl...	376	C21H44O3S	1000309-18-4	83
4		5-Ethyl-5-methylnonadecane	310	C22H46	1000360-42-7	83
5		2-Bromo dodecane	248	C12H25Br	013187-99-0	80



Data Path : Z:\svoasrv\HPCHEM1\BNA\_F\Data\BF022322\  
 Data File : BF127053.D  
 Acq On : 23 Feb 2022 21:55  
 Operator : CG\JU  
 Sample : N1626-06 5X  
 Misc :  
 ALS Vial : 23 Sample Multiplier: 1

Instrument :  
 BNA\_F  
 ClientSampleId :  
 CC-B3

Quant Method : Z:\svoasrv\HPCHEM1\BNA\_F\Methods\8270-BF021622.M  
 Quant Title : ASP BNA STANDARDS FOR 5 POINT CALIBRATION

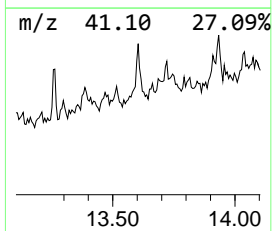
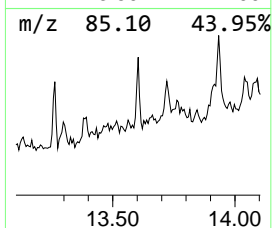
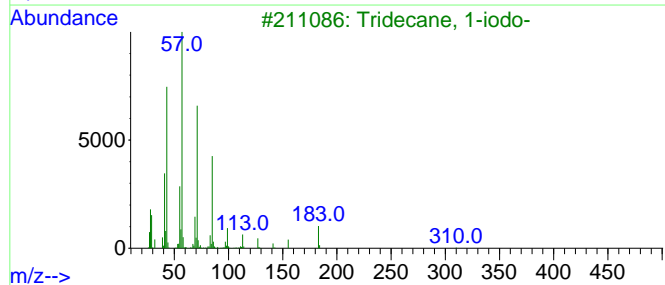
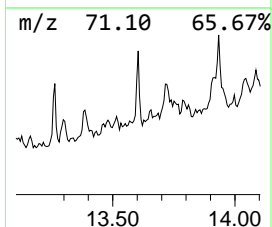
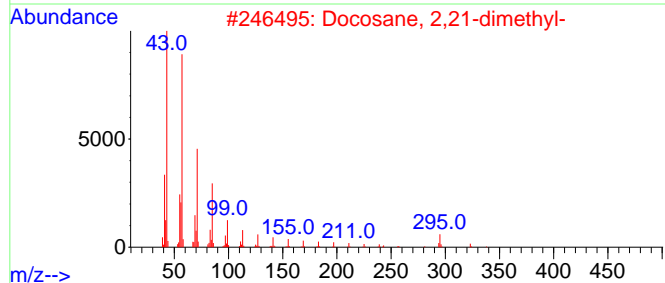
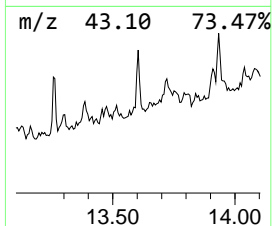
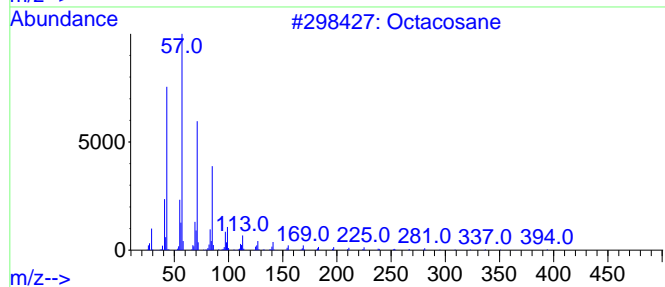
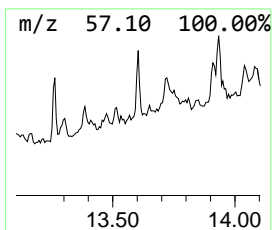
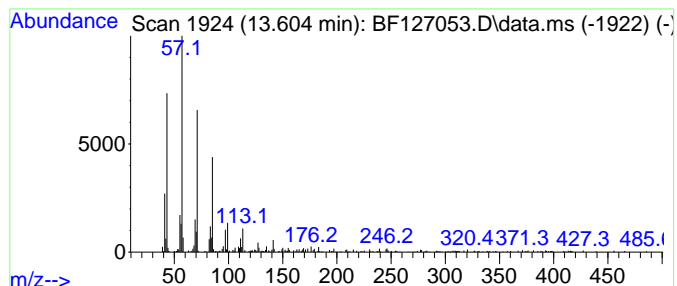
TIC Library : C:\Database\NIST20.L  
 TIC Integration Parameters: LSCINT.P

\*\*\*\*\*  
 Peak Number 20 Docosane, 2,21-dimethyl- Concentration Rank 4

R.T.	EstConc	Area	Relative to ISTD	R.T.
13.604	20.00 ng	154940	Chrysene-d12	14.104

Hit#	of 5	Tentative ID	MW	MolForm	CAS#	Qual
1		Octacosane	394	C28H58	000630-02-4	90
2		Docosane, 2,21-dimethyl-	338	C24H50	077536-31-3	90
3		Tridecane, 1-iodo-	310	C13H27I	035599-77-0	90
4		Octacosane, 2-methyl-	408	C29H60	001560-98-1	87
5		Octadecane	254	C18H38	000593-45-3	87



Data Path : Z:\svoasrv\HPCHEM1\BNA\_F\Data\BF022322\  
 Data File : BF127053.D  
 Acq On : 23 Feb 2022 21:55  
 Operator : CG\JU  
 Sample : N1626-06 5X  
 Misc :  
 ALS Vial : 23 Sample Multiplier: 1

Instrument :  
 BNA\_F  
 ClientSampleId :  
 CC-B3

Quant Method : Z:\svoasrv\HPCHEM1\BNA\_F\Methods\8270-BF021622.M  
 Quant Title : ASP BNA STANDARDS FOR 5 POINT CALIBRATION

TIC Library : C:\Database\NIST0.L  
 TIC Integration Parameters: LSCINT.P

TIC Top Hit name	RT	EstConc	Units	Response	--Internal Standard--			
					#	RT	Resp	Conc
3-Penten-2-one,...	4.528	40.8	ng	860198	1	6.916	421668	20.0
2-Pentanone, 4-...	5.134	9.1	ng	191187	1	6.916	421668	20.0
1-Dodecanamine,...	9.904	7.3	ng	150241	3	9.963	410870	20.0
Octacosane	10.851	3.7	ng	65903	4	11.451	359897	20.0
1-Tetradecanami...	10.874	18.3	ng	330030	4	11.451	359897	20.0
Sulfurous acid,...	11.304	6.7	ng	120385	4	11.451	359897	20.0
Sulfurous acid,...	11.333	3.2	ng	57548	4	11.451	359897	20.0
Dimethyl palmit...	11.757	21.4	ng	384428	4	11.451	359897	20.0
1H-Cyclopropa[l...	11.957	2.8	ng	50238	4	11.451	359897	20.0
Anthracene, 1-m...	11.986	3.3	ng	60057	4	11.451	359897	20.0
Anthracene, 2-m...	12.027	3.0	ng	53804	4	11.451	359897	20.0
6H-Cyclobuta[jk...	12.069	5.9	ng	105645	4	11.451	359897	20.0
Eicosane	12.139	7.4	ng	133921	4	11.451	359897	20.0
Eicosane, 2-met...	12.422	3.0	ng	53355	4	11.451	359897	20.0
Dodecyltrimethy...	12.469	10.2	ng	183162	4	11.451	359897	20.0
5-Hepten-2-amin...	12.492	6.2	ng	111267	4	11.451	359897	20.0
Heneicosane	12.527	6.7	ng	121128	4	11.451	359897	20.0
Eicosylamine, N...	12.557	15.1	ng	271230	4	11.451	359897	20.0
Tricosane	13.263	25.8	ng	199602	5	14.104	154940	20.0
Docosane, 2,21-...	13.604	20.0	ng	154940	5	14.104	154940	20.0