

Data Path : Z:\HPCHEM1\BNA_F\DATA\BF022415\
 Data File : BF077423.D
 Acq On : 24 Feb 2015 18:50
 Operator : IZ / TP
 Sample : G1353-01
 Misc :
 ALS Vial : 27 Sample Multiplier: 1

Instrument :
 BNA_F
 ClientSampleId :
 MW-2

Quant Time: Feb 25 01:31:06 2015
 Quant Method : Z:\HPCHEM1\BNA_F\METHODS\8270-BF021915.M
 Quant Title : ASP BNA STANDARDS FOR 5 POINT CALIBRATION
 QLast Update : Wed Feb 25 00:25:01 2015
 Response via : Initial Calibration

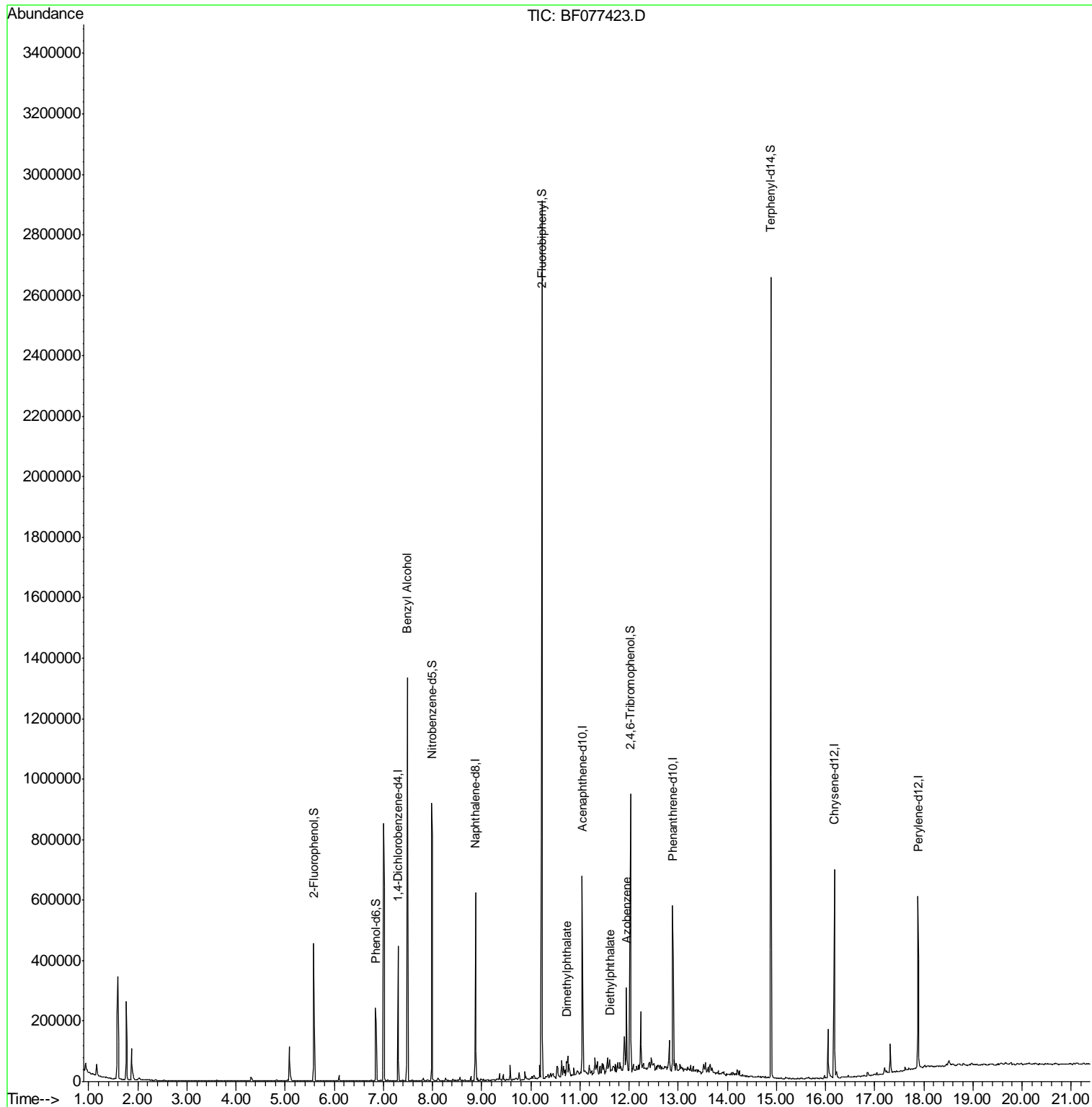
Internal Standards	R.T.	QIon	Response	Conc	Units	Dev(Min)
1) 1,4-Dichlorobenzene-d4	7.30	152	66732	20.00	ng	0.00
21) Naphthalene-d8	8.88	136	265606	20.00	ng	-0.01
38) Acenaphthene-d10	11.05	164	133992	20.00	ng	-0.01
63) Phenanthrene-d10	12.89	188	260556	20.00	ng	-0.01
75) Chrysene-d12	16.18	240	281129	20.00	ng	-0.05
86) Perylene-d12	17.88	264	285190	20.00	ng	-0.17
System Monitoring Compounds						
5) 2-Fluorophenol	5.58	112	142836	35.73	ng	-0.01
7) Phenol-d6	6.84	99	113356	22.06	ng	-0.02
23) Nitrobenzene-d5	7.98	82	420115	98.36	ng	-0.01
41) 2,4,6-Tribromophenol	12.03	330	125455	97.24	ng	-0.01
44) 2-Fluorobiphenyl	10.22	172	926098	107.77	ng	0.00
78) Terphenyl-d14	14.89	244	999636	83.13	ng	-0.01
Target Compounds						
15) Benzyl Alcohol	7.48	79	8111	2.08	ng	# 56
49) Dimethylphthalate	10.73	163	19673	2.09	ng	97
59) Diethylphthalate	11.61	149	19701	2.12	ng	96
62) Azobenzene	11.95	77	45502	5.16	ng	# 1

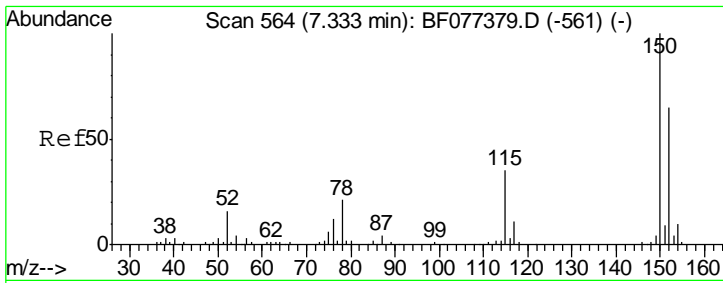
(#) = qualifier out of range (m) = manual integration (+) = signals summed

Data Path : Z:\HPCHEM1\BNA_F\DATA\BF022415\
 Data File : BF077423.D
 Acq On : 24 Feb 2015 18:50
 Operator : IZ / TP
 Sample : G1353-01
 Misc :
 ALS Vial : 27 Sample Multiplier: 1

Instrument :
 BNA_F
 ClientSampled :
 MW-2

Quant Time: Feb 25 01:31:06 2015
 Quant Method : Z:\HPCHEM1\BNA_F\METHODS\8270-BF021915.M
 Quant Title : ASP BNA STANDARDS FOR 5 POINT CALIBRATION
 QLast Update : Wed Feb 25 00:25:01 2015
 Response via : Initial Calibration

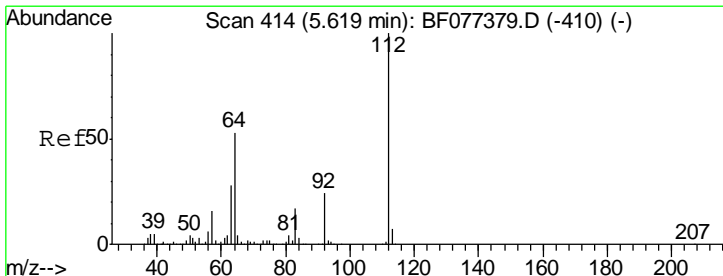
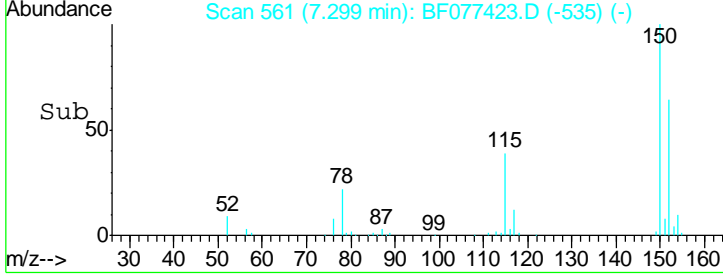
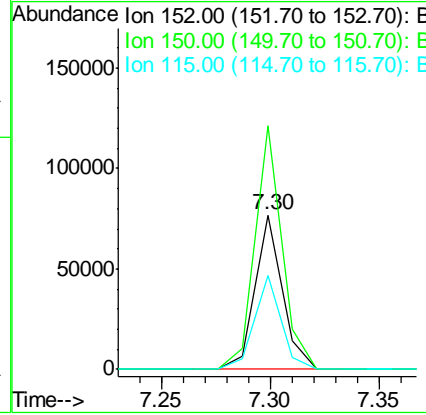
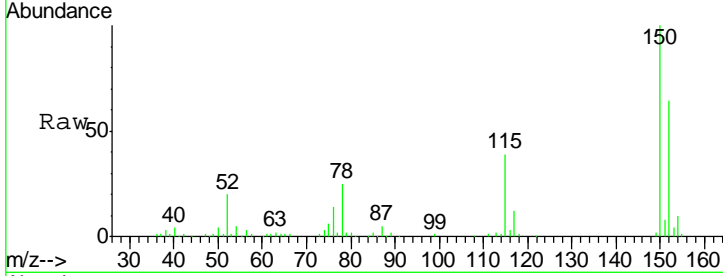




#1
 1,4-Dichlorobenzene-d4
 Concen: 20.00 ng
 RT: 7.30 min Scan# 561
 Delta R.T. -0.00 min
 Lab File: BF077423.D
 Acq: 24 Feb 2015 18:50

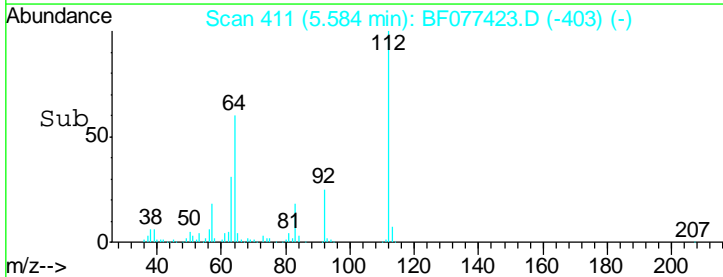
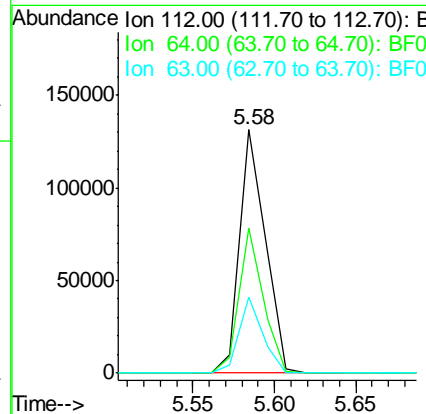
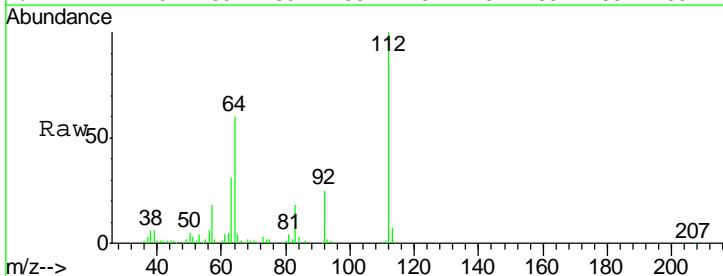
Instrument :
 BNA_F
 ClientSampleID :
 MW-2

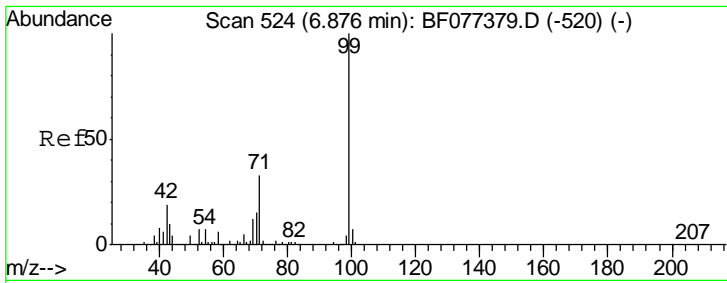
Tgt Ion	Resp	Lower	Upper
152	66732		
150	157.4	124.0	186.0
115	61.1	49.4	74.2



#5
 2-Fluorophenol
 Concen: 35.73 ng
 RT: 5.58 min Scan# 411
 Delta R.T. -0.01 min
 Lab File: BF077423.D
 Acq: 24 Feb 2015 18:50

Tgt Ion	Resp	Lower	Upper
112	142836		
64	59.6	48.5	72.7
63	31.2	25.0	37.4

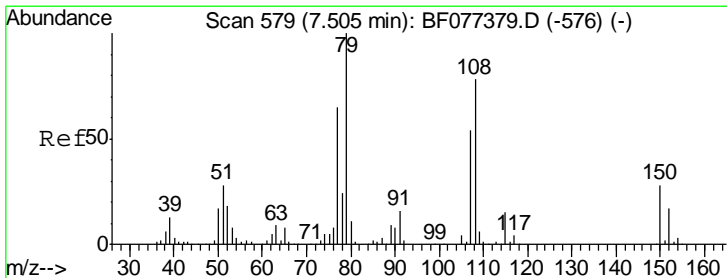
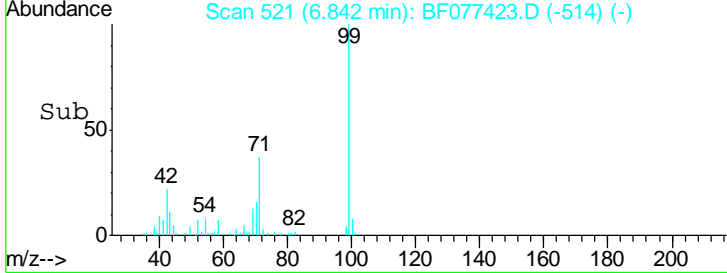
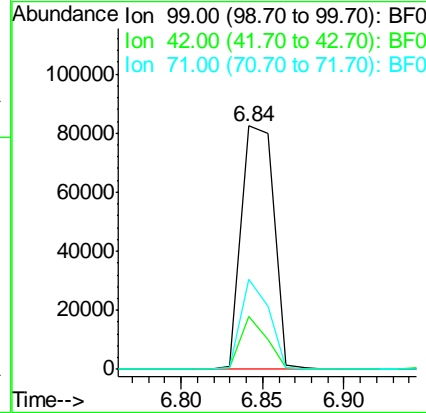
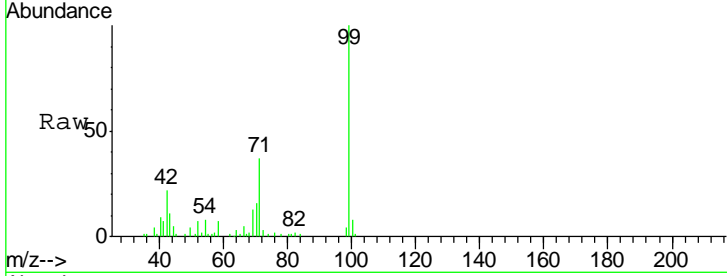




#7
 Phenol-d6
 Concen: 22.06 ng
 RT: 6.84 min Scan# 521
 Delta R.T. -0.02 min
 Lab File: BF077423.D
 Acq: 24 Feb 2015 18:50

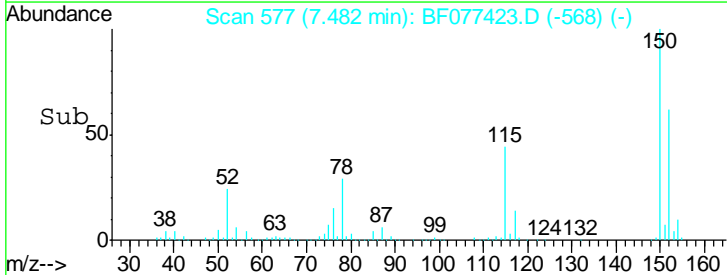
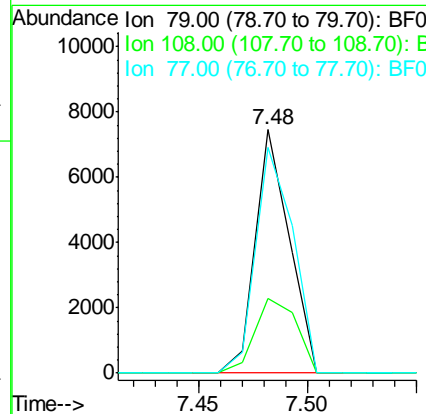
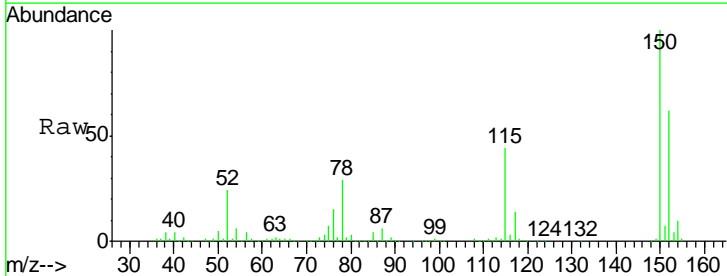
Instrument :
 BNA_F
 ClientSampled :
 MW-2

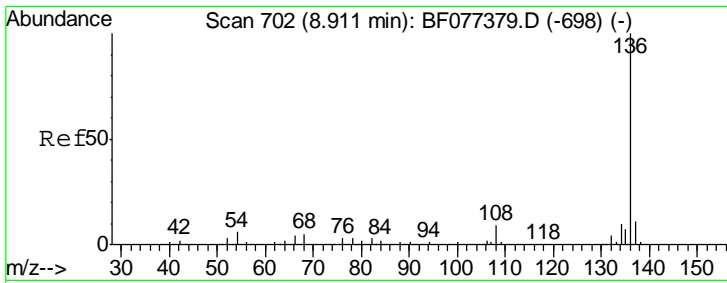
Tgt Ion	Resp	Lower	Upper
99	113356		
42	21.8	16.2	24.4
71	37.0	26.7	40.1



#15
 Benzyl Alcohol
 Concen: 2.08 ng
 RT: 7.48 min Scan# 577
 Delta R.T. -0.00 min
 Lab File: BF077423.D
 Acq: 24 Feb 2015 18:50

Tgt Ion	Resp	Lower	Upper
79	8111		
108	30.5	58.3	87.5#
77	92.5	51.3	76.9#

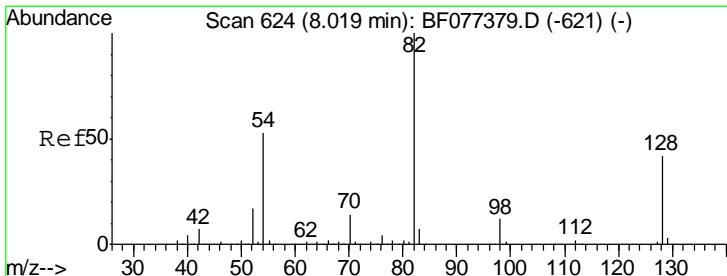
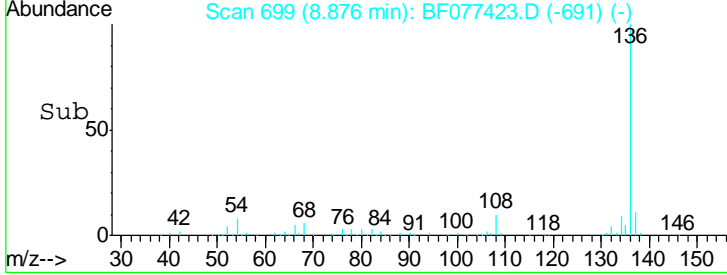
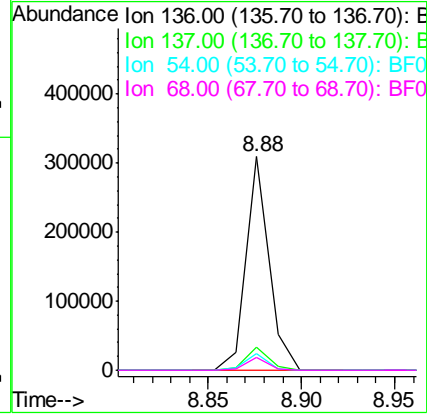
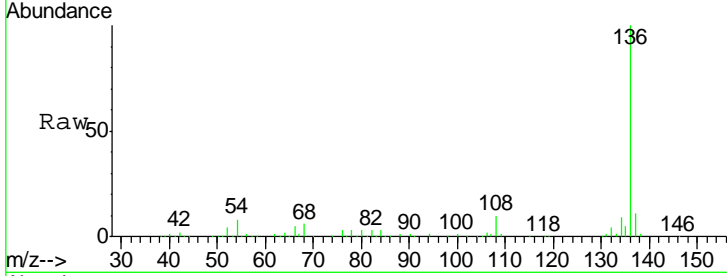




#21
 Naphthalene-d8
 Concen: 20.00 ng
 RT: 8.88 min Scan# 699
 Delta R.T. -0.01 min
 Lab File: BF077423.D
 Acq: 24 Feb 2015 18:50

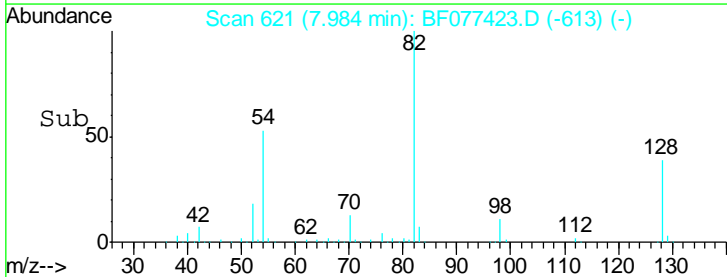
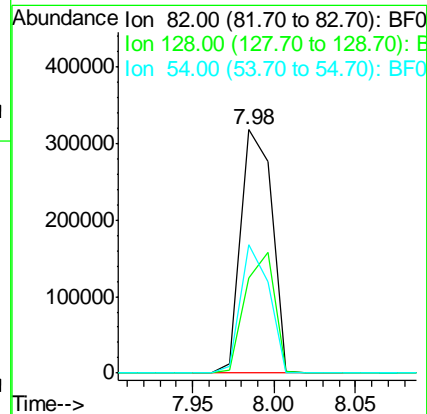
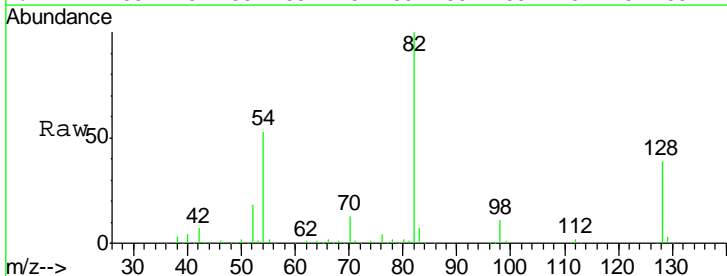
Instrument :
 BNA_F
 ClientSampled :
 MW-2

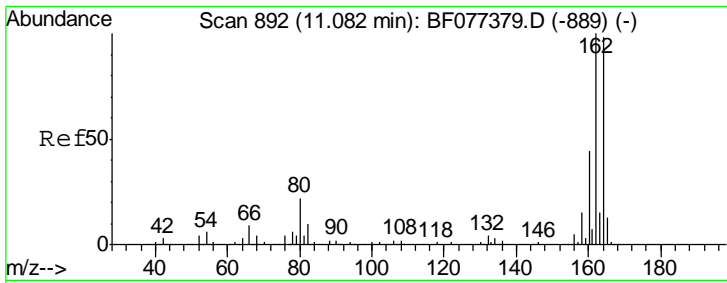
Tgt Ion	Resp	Lower	Upper
136	100		
137	11.0	8.6	13.0
54	7.7	6.2	9.4
68	6.0	5.0	7.6



#23
 Nitrobenzene-d5
 Concen: 98.36 ng
 RT: 7.98 min Scan# 621
 Delta R.T. -0.01 min
 Lab File: BF077423.D
 Acq: 24 Feb 2015 18:50

Tgt Ion	Resp	Lower	Upper
82	100		
128	39.2	43.8	65.8#
54	53.0	36.7	55.1

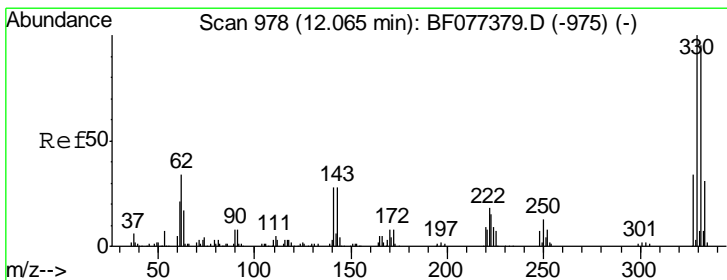
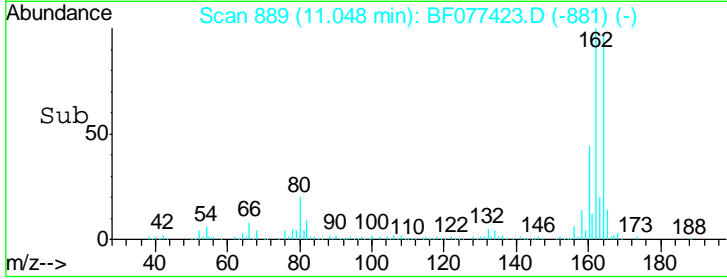
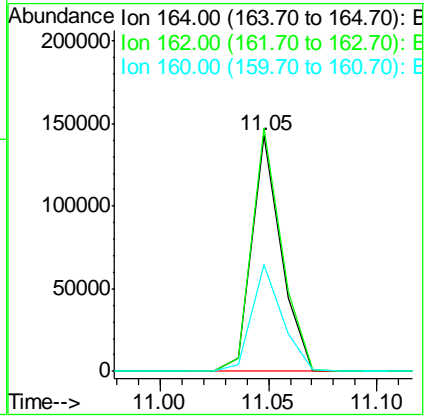
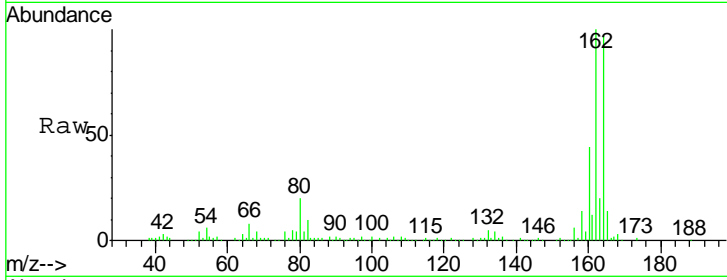




#38
 Acenaphthene-d10
 Concen: 20.00 ng
 RT: 11.05 min Scan# 889
 Delta R.T. -0.01 min
 Lab File: BF077423.D
 Acq: 24 Feb 2015 18:50

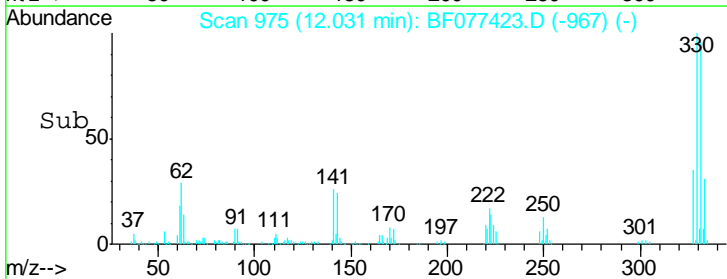
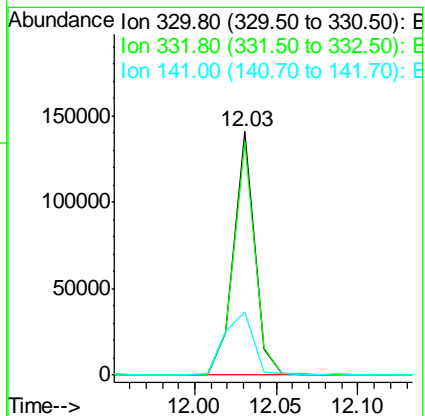
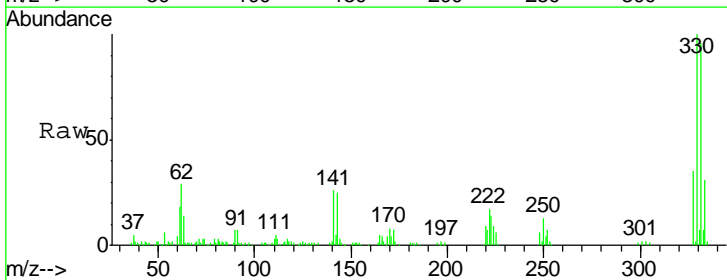
Instrument :
 BNA_F
 ClientSampled :
 MW-2

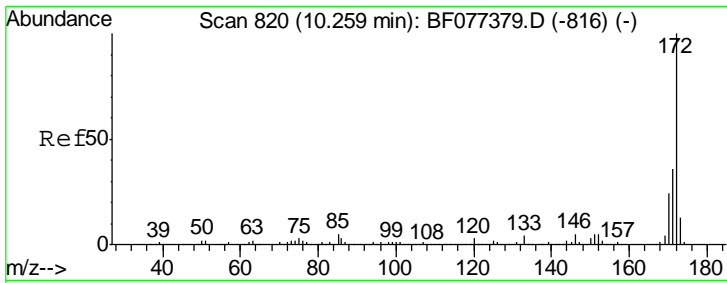
Tgt Ion	Resp	Lower	Upper
164	100		
162	103.5	83.2	124.8
160	45.1	34.6	52.0



#41
 2,4,6-Tribromophenol
 Concen: 97.24 ng
 RT: 12.03 min Scan# 975
 Delta R.T. -0.01 min
 Lab File: BF077423.D
 Acq: 24 Feb 2015 18:50

Tgt Ion	Resp	Lower	Upper
330	100		
332	97.1	77.4	116.2
141	37.1	28.8	43.2



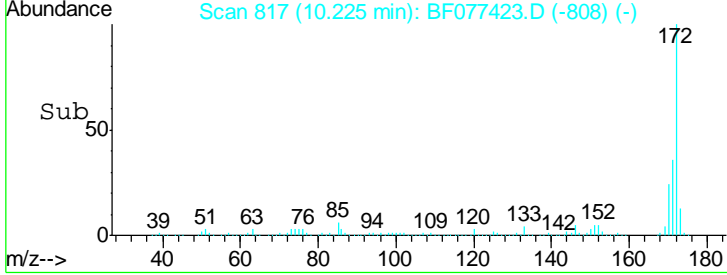
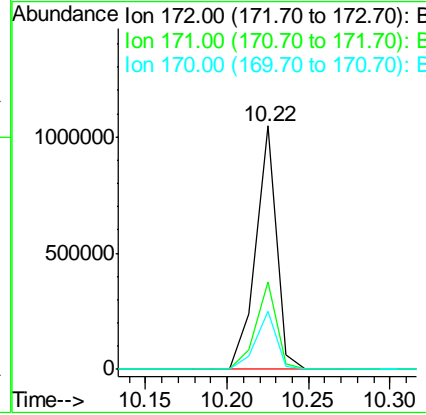
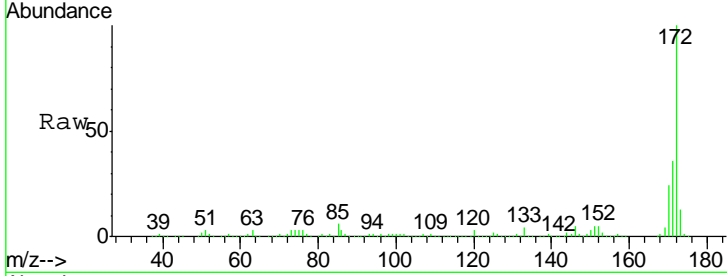


#44
 2-Fluorobiphenyl
 Concen: 107.77 ng
 RT: 10.22 min Scan# 817
 Delta R.T. -0.00 min
 Lab File: BF077423.D
 Acq: 24 Feb 2015 18:50

Instrument :
 BNA_F
 ClientSampleId :
 MW-2

Tgt Ion:172 Resp: 926098

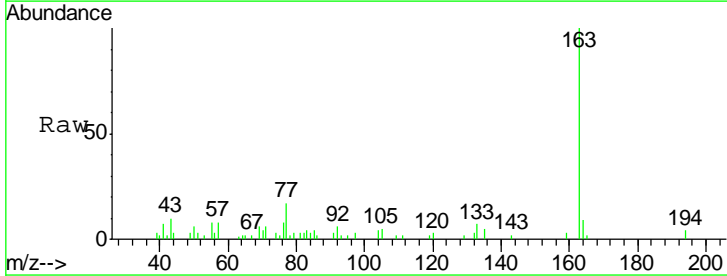
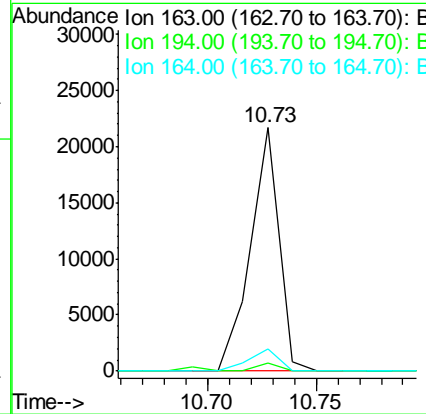
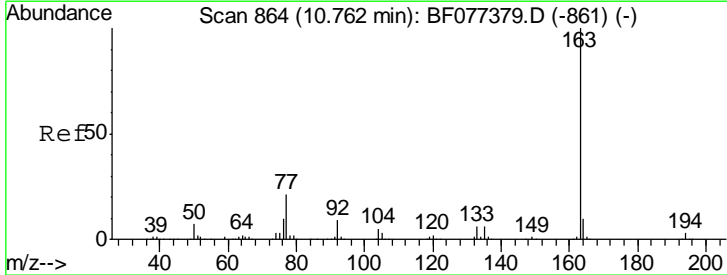
Ion	Ratio	Lower	Upper
172	100		
171	35.7	28.9	43.3
170	24.1	19.4	29.2

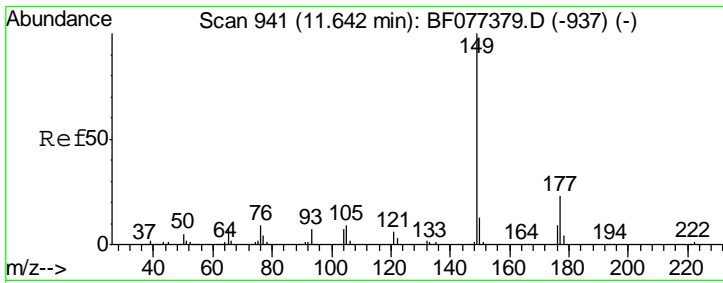


#49
 Dimethylphthalate
 Concen: 2.09 ng
 RT: 10.73 min Scan# 861
 Delta R.T. -0.01 min
 Lab File: BF077423.D
 Acq: 24 Feb 2015 18:50

Tgt Ion:163 Resp: 19673

Ion	Ratio	Lower	Upper
163	100		
194	3.5	2.6	4.0
164	9.4	8.6	13.0

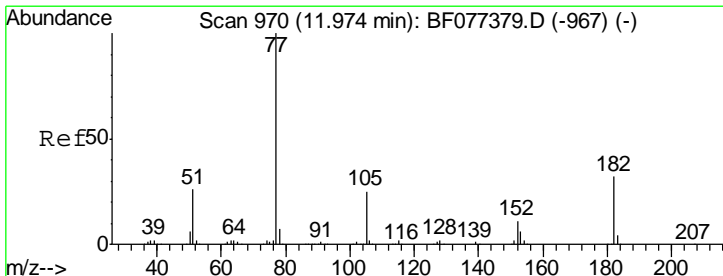
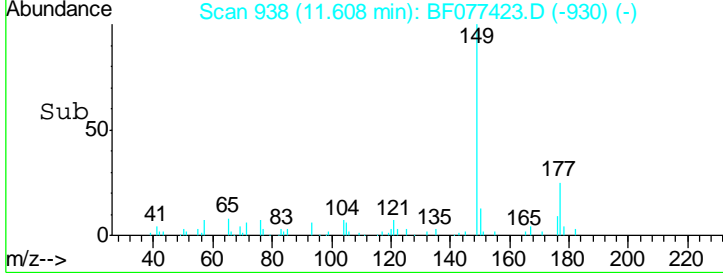
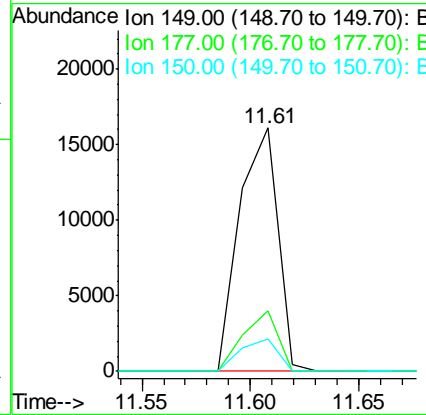
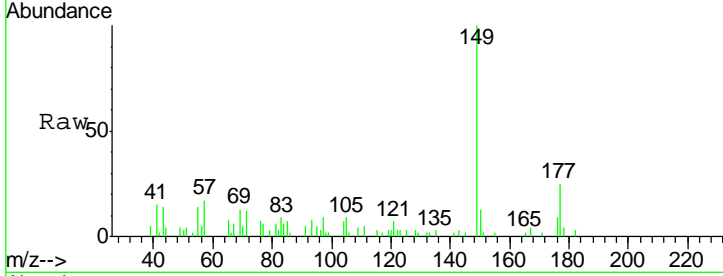




#59
 Diethylphthalate
 Concen: 2.12 ng
 RT: 11.61 min Scan# 938
 Delta R.T. -0.01 min
 Lab File: BF077423.D
 Acq: 24 Feb 2015 18:50

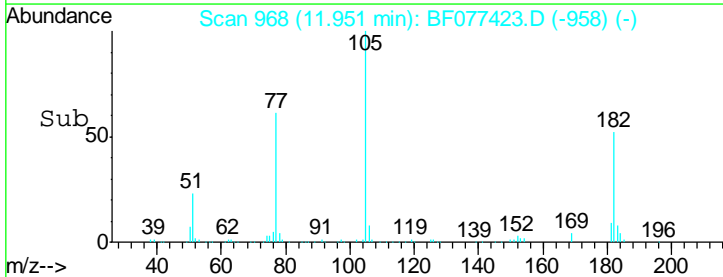
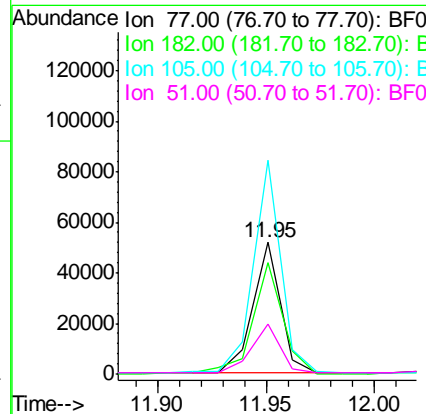
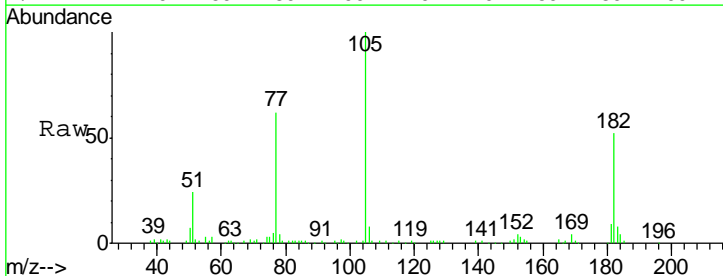
Instrument :
 BNA_F
 ClientSampled :
 MW-2

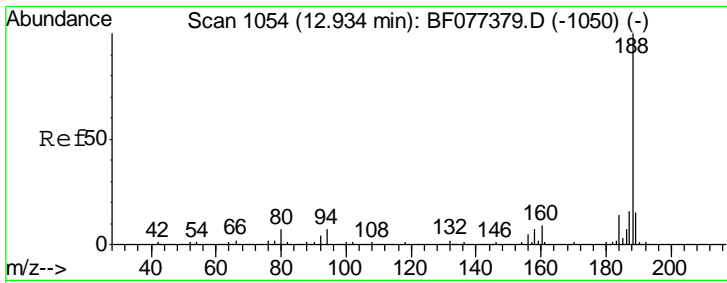
Tgt Ion	Resp	Lower	Upper
149	19701		
177	24.7	17.2	25.8
150	13.1	10.5	15.7



#62
 Azobenzene
 Concen: 5.16 ng
 RT: 11.95 min Scan# 968
 Delta R.T. 0.01 min
 Lab File: BF077423.D
 Acq: 24 Feb 2015 18:50

Tgt Ion	Resp	Lower	Upper
77	45502		
182	84.8	4.9	44.9#
105	162.5	3.3	43.3#
51	38.4	8.9	48.9

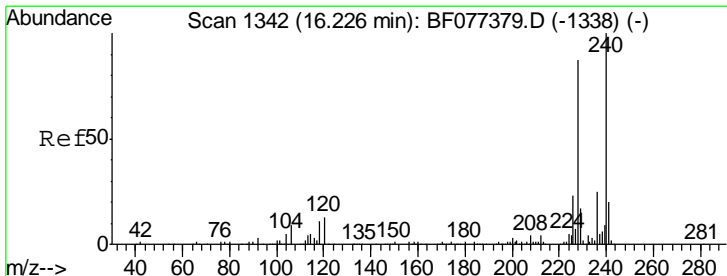
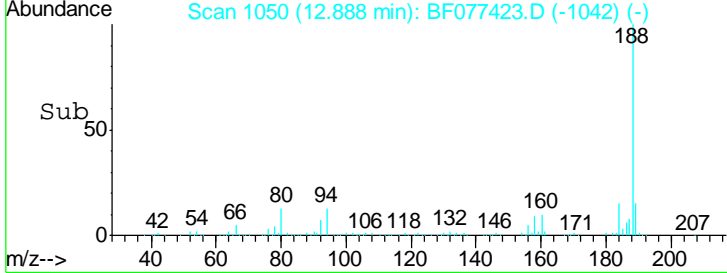
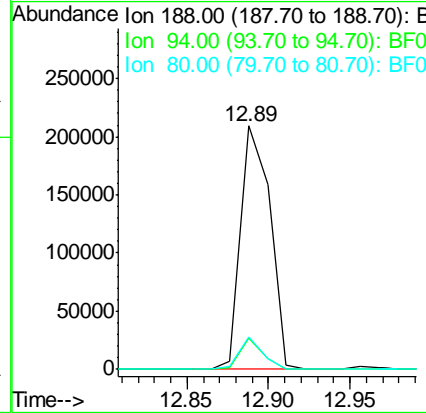
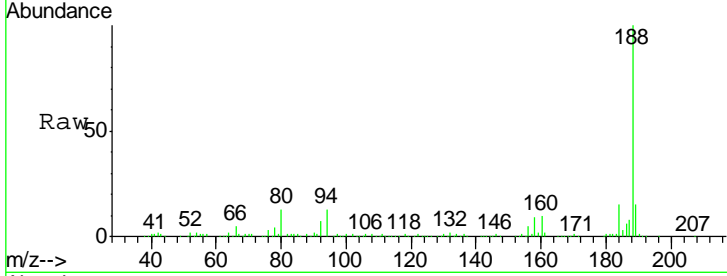




#63
 Phenanthrene-d10
 Concen: 20.00 ng
 RT: 12.89 min Scan# 1050
 Delta R.T. -0.01 min
 Lab File: BF077423.D
 Acq: 24 Feb 2015 18:50

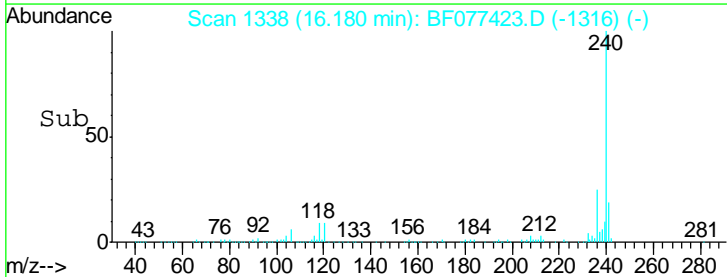
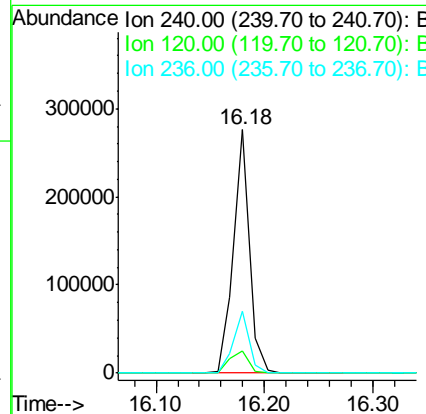
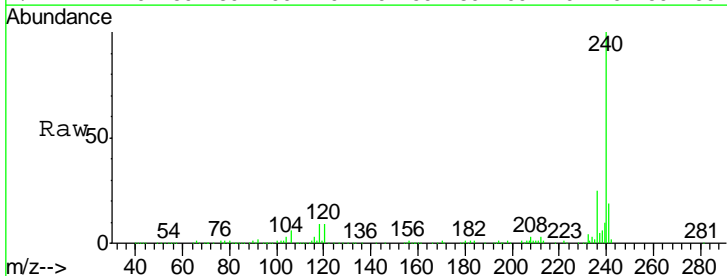
Instrument :
 BNA_F
 ClientSampled :
 MW-2

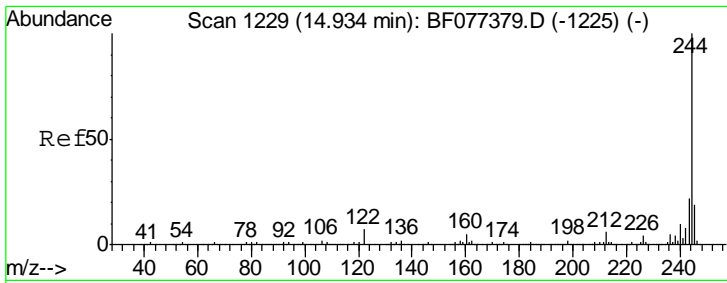
Tgt Ion	Resp	Lower	Upper
188	100		
94	12.8	7.4	11.2#
80	13.3	8.0	12.0#



#75
 Chrysene-d12
 Concen: 20.00 ng
 RT: 16.18 min Scan# 1338
 Delta R.T. -0.05 min
 Lab File: BF077423.D
 Acq: 24 Feb 2015 18:50

Tgt Ion	Resp	Lower	Upper
240	100		
120	9.4	8.8	13.2
236	25.2	20.7	31.1

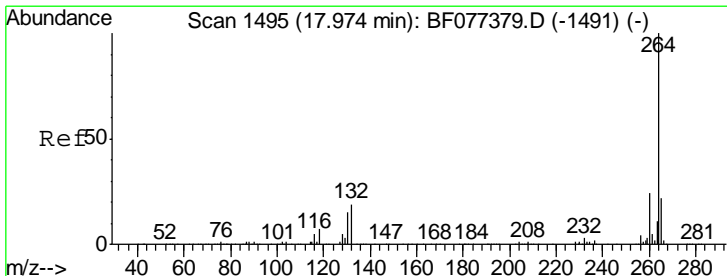
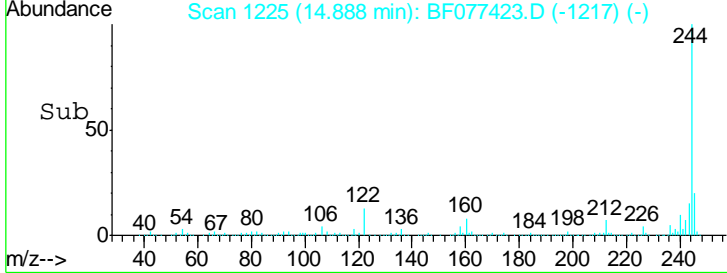
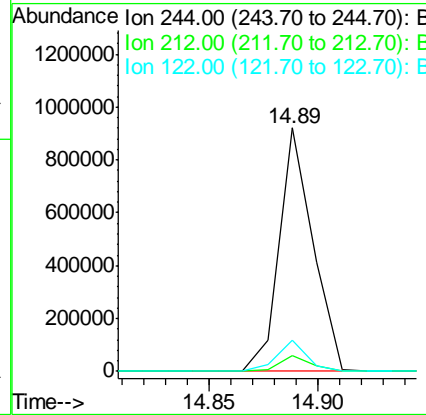
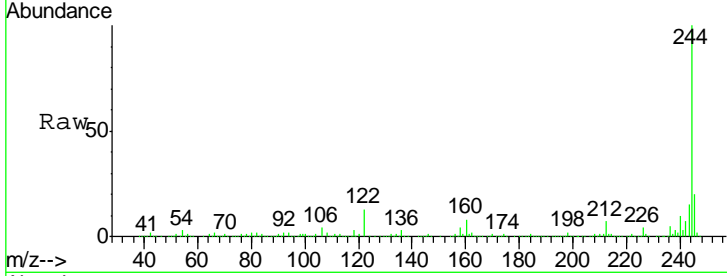




#78
 Terphenyl-d14
 Concen: 83.13 ng
 RT: 14.89 min Scan# 1225
 Delta R.T. -0.01 min
 Lab File: BF077423.D
 Acq: 24 Feb 2015 18:50

Instrument :
 BNA_F
 ClientSampled :
 MW-2

Tgt Ion	Ratio	Lower	Upper
244	100		
212	6.7	5.2	7.8
122	13.0	7.8	11.8#



#86
 Perylene-d12
 Concen: 20.00 ng
 RT: 17.88 min Scan# 1487
 Delta R.T. -0.17 min
 Lab File: BF077423.D
 Acq: 24 Feb 2015 18:50

Tgt Ion	Ratio	Lower	Upper
264	100		
260	23.9	19.3	28.9
265	22.3	16.8	25.2

