

Data Path : Z:\SVOASRV\HPCHEM1\BNA F\DATA\BF022420\
 Data File : BF119037.D
 Acq On : 24 Feb 2020 22:58
 Operator : CG/JU
 Sample : L1635-04
 Misc :
 ALS Vial : 12 Sample Multiplier: 1

Instrument :
 BNA_F
 ClientSampleId :

Quant Time: Feb 25 00:28:02 2020
 Quant Method : Z:\SVOASRV\HPCHEM1\BNA F\METHODS\8270-BF022020.M
 Quant Title : ASP BNA STANDARDS FOR 5 POINT CALIBRATION
 QLast Update : Thu Feb 20 17:40:17 2020
 Response via : Initial Calibration

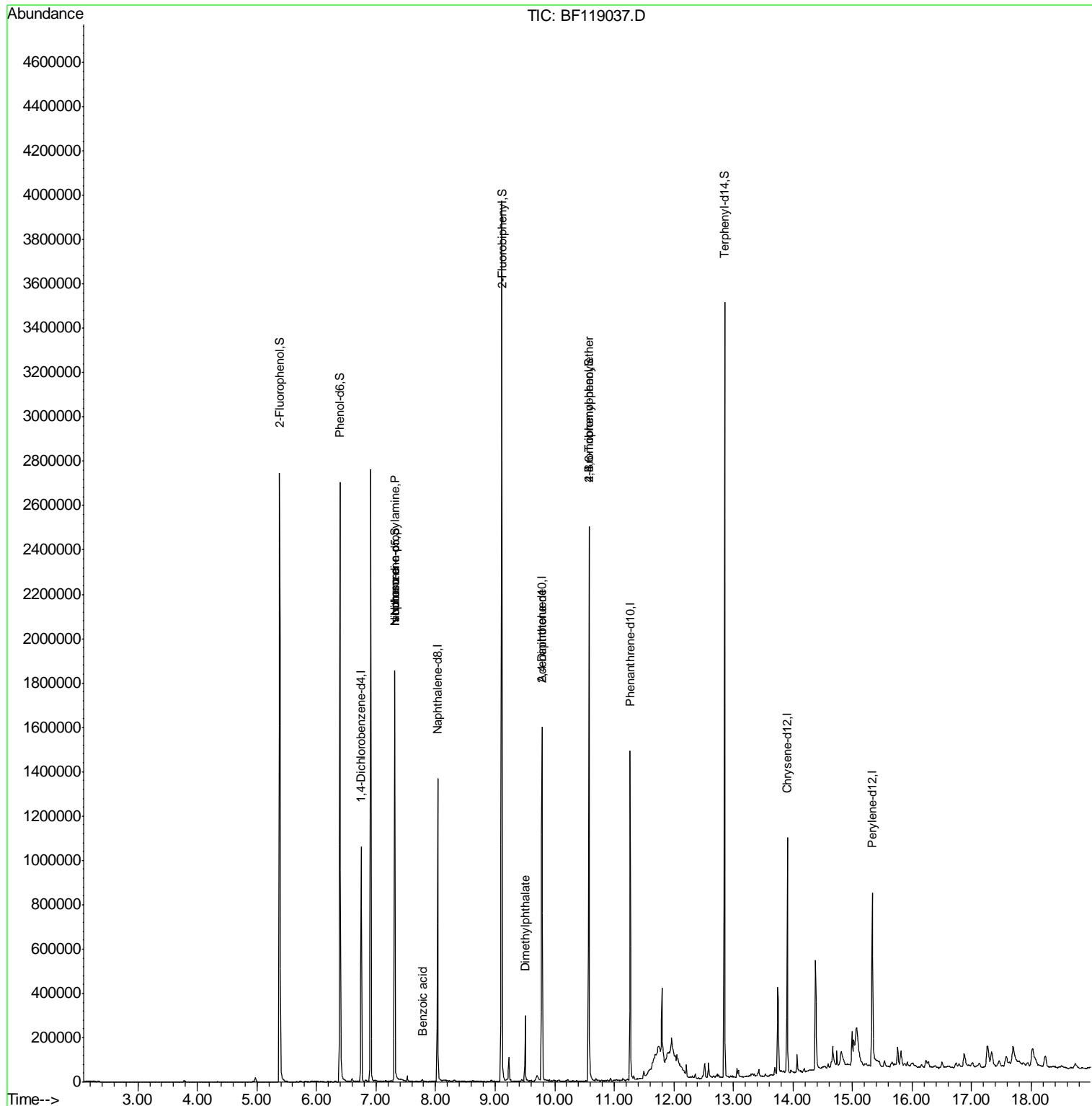
| Internal Standards | R.T. | QIon | Response | Conc | Units | Dev(Min) |
|--------------------------------|-------|------|----------|--------|-------|----------|
| 1) 1,4-Dichlorobenzene-d4 | 6.75 | 152 | 164761 | 20.00 | ng | -0.01 |
| 21) Naphthalene-d8 | 8.03 | 136 | 623259 | 20.00 | ng | -0.01 |
| 39) Acenaphthene-d10 | 9.79 | 164 | 328431 | 20.00 | ng | 0.00 |
| 64) Phenanthrene-d10 | 11.27 | 188 | 548101 | 20.00 | ng | 0.00 |
| 76) Chrysene-d12 | 13.90 | 240 | 348529 | 20.00 | ng | 0.00 |
| 87) Perylene-d12 | 15.33 | 264 | 376094 | 20.00 | ng | 0.00 |
| System Monitoring Compounds | | | | | | |
| 5) 2-Fluorophenol | 5.38 | 112 | 823599 | 83.54 | ng | 0.00 |
| 7) Phenol-d6 | 6.40 | 99 | 990684 | 82.62 | ng | 0.00 |
| 23) Nitrobenzene-d5 | 7.32 | 82 | 653956 | 55.40 | ng | -0.01 |
| 42) 2,4,6-Tribromophenol | 10.57 | 330 | 326362 | 75.96 | ng | 0.00 |
| 45) 2-Fluorobiphenyl | 9.11 | 172 | 1250898 | 56.11 | ng | -0.01 |
| 79) Terphenyl-d14 | 12.85 | 244 | 1201387 | 59.35 | ng | 0.00 |
| Target Compounds | | | | | | |
| 19) n-Nitroso-di-n-propylamine | 7.32 | 70 | 91378 | 13.079 | ng | # 76 |
| 25) Isophorone | 7.32 | 82 | 653951 | 31.900 | ng | # 63 |
| 32) Benzoic acid | 7.79 | 122 | 132 | 6.699 | ng | # 37 |
| 50) Dimethylphthalate | 9.50 | 163 | 133380 | 5.311 | ng | 100 |
| 57) 2,4-Dinitrotoluene | 9.79 | 165 | 41734 | 5.770 | ng | # 29 |
| 67) 4-Bromophenyl-phenylether | 10.57 | 248 | 21210 | 2.960 | ng | # 1 |

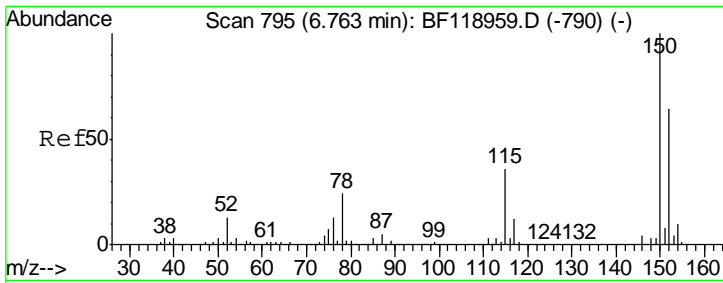
(#) = qualifier out of range (m) = manual integration (+) = signals summed

Data Path : Z:\SVOASRV\HPCHEM1\BNA F\DATA\BF022420\
 Data File : BF119037.D
 Acq On : 24 Feb 2020 22:58
 Operator : CG/JU
 Sample : L1635-04
 Misc :
 ALS Vial : 12 Sample Multiplier: 1

Instrument :
 BNA_F
 ClientSampleId :

Quant Time: Feb 25 00:28:02 2020
 Quant Method : Z:\SVOASRV\HPCHEM1\BNA F\METHODS\8270-BF022020.M
 Quant Title : ASP BNA STANDARDS FOR 5 POINT CALIBRATION
 QLast Update : Thu Feb 20 17:40:17 2020
 Response via : Initial Calibration

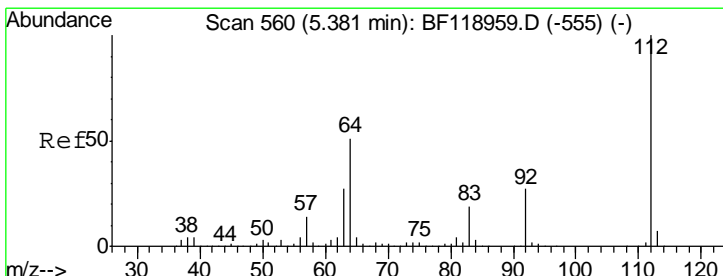
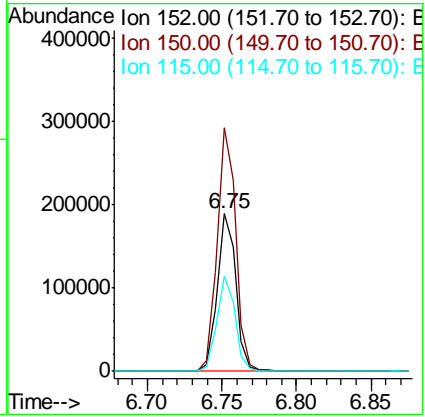
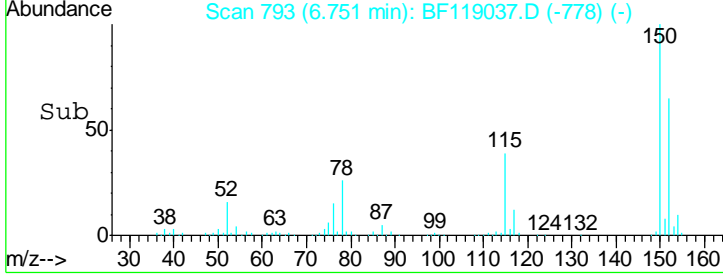
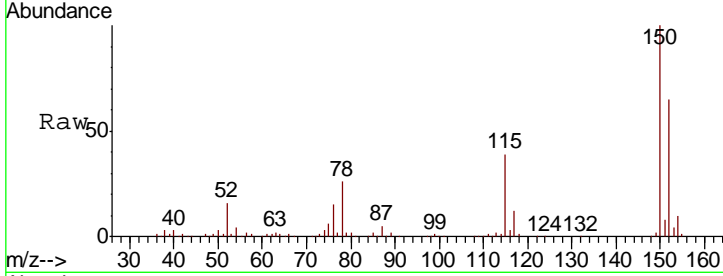




#1
 1,4-Dichlorobenzene-d4
 Concen: 20.000 ng
 RT: 6.75 min Scan# 793
 Delta R.T. -0.01 min
 Lab File: BF119037.D
 Acq: 24 Feb 2020 22:58

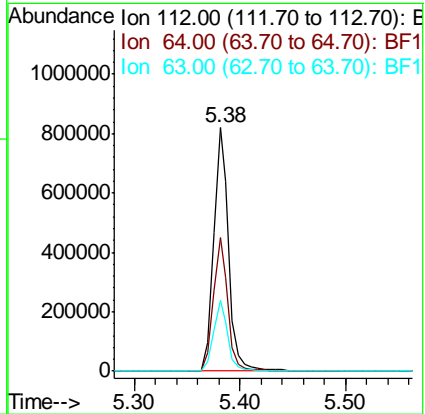
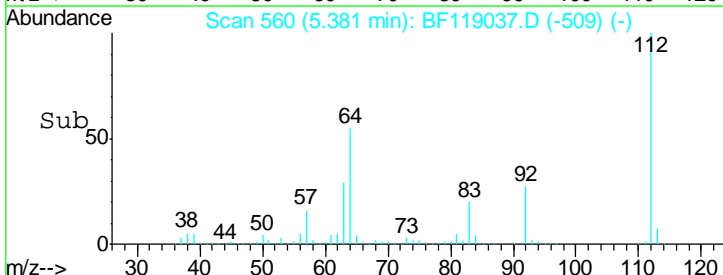
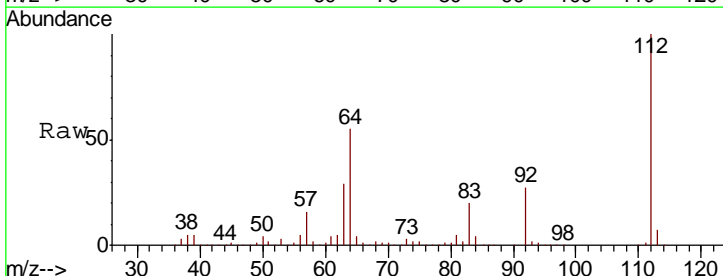
Instrument :
 BNA_F
 ClientSampled :

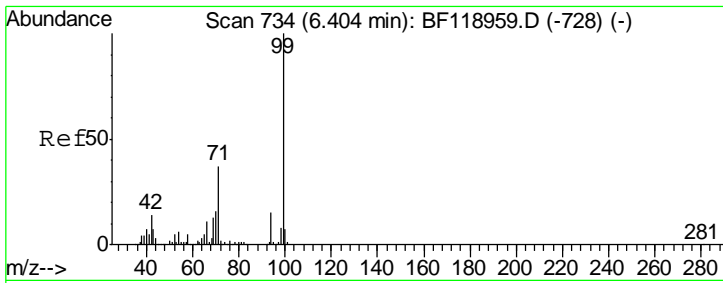
| Tgt Ion | Resp | Lower | Upper |
|---------|--------|-------|-------|
| 152 | 164761 | | |
| 150 | 154.6 | 124.3 | 186.5 |
| 115 | 60.5 | 44.6 | 67.0 |



#5
 2-Fluorophenol
 Concen: 83.538 ng
 RT: 5.38 min Scan# 560
 Delta R.T. -0.00 min
 Lab File: BF119037.D
 Acq: 24 Feb 2020 22:58

| Tgt Ion | Resp | Lower | Upper |
|---------|--------|-------|-------|
| 112 | 823599 | | |
| 64 | 55.0 | 40.4 | 60.6 |
| 63 | 28.9 | 21.3 | 31.9 |

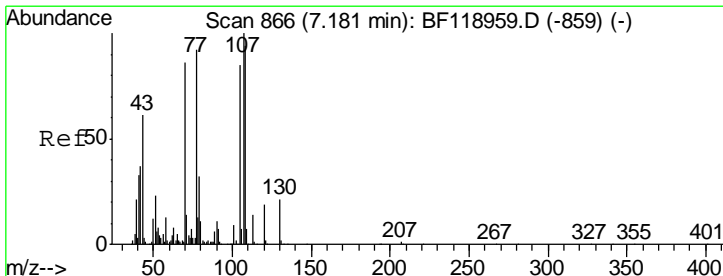
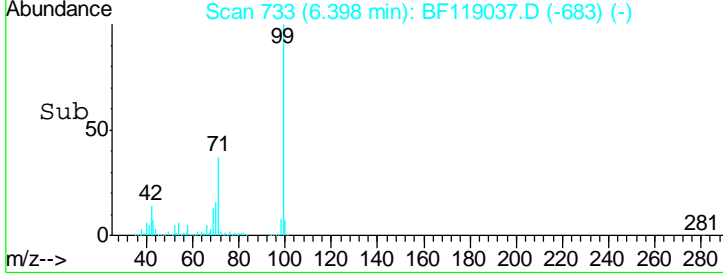
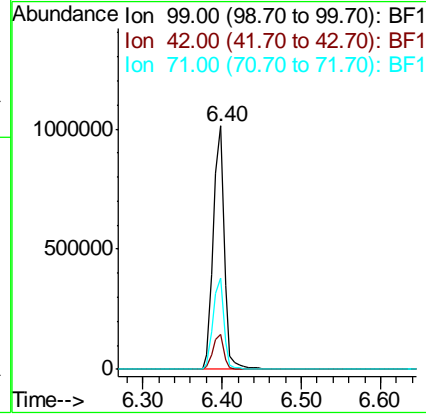
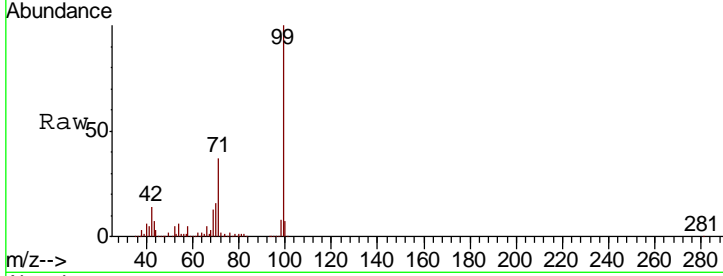




#7
 Phenol-d6
 Concen: 82.624 ng
 RT: 6.40 min Scan# 733
 Delta R.T. -0.01 min
 Lab File: BF119037.D
 Acq: 24 Feb 2020 22:58

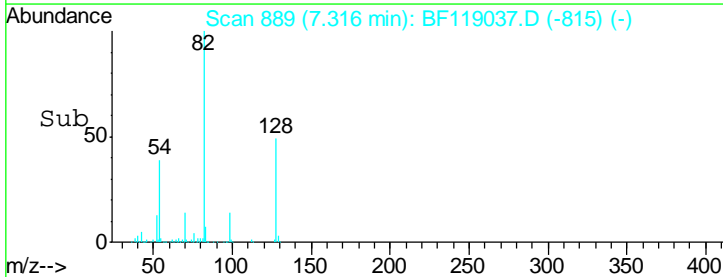
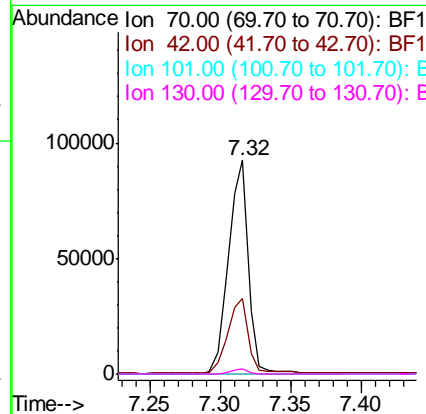
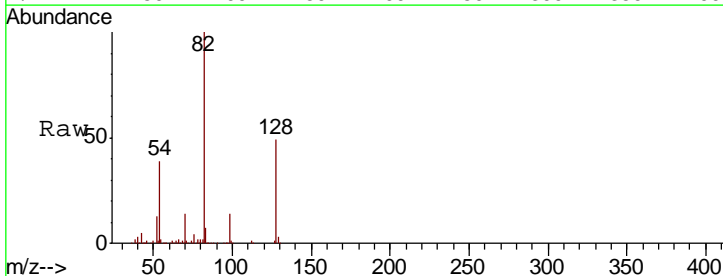
Instrument :
 BNA_F
 ClientSampled :

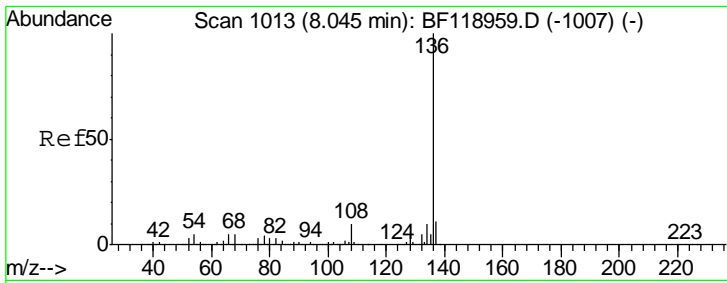
| Tgt Ion | Resp | Lower | Upper |
|---------|------|-------|-------|
| 99 | 100 | | |
| 42 | 14.5 | 11.4 | 17.0 |
| 71 | 37.3 | 29.8 | 44.6 |



#19
 n-Nitroso-di-n-propylamine
 Concen: 13.079 ng
 RT: 7.32 min Scan# 889
 Delta R.T. 0.14 min
 Lab File: BF119037.D
 Acq: 24 Feb 2020 22:58

| Tgt Ion | Resp | Lower | Upper |
|---------|------|-------|-------|
| 70 | 100 | | |
| 42 | 35.3 | 34.6 | 51.8 |
| 101 | 0.0 | 8.1 | 12.1# |
| 130 | 2.1 | 19.4 | 29.2# |

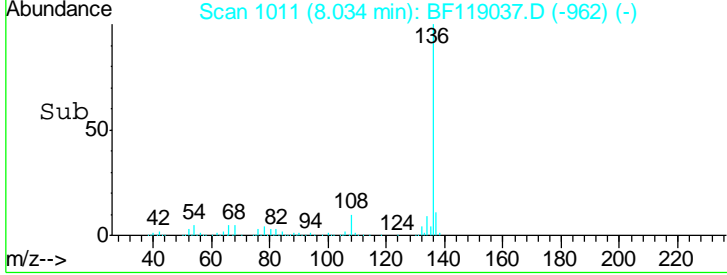
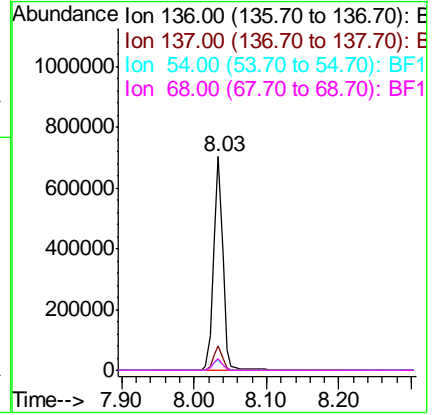
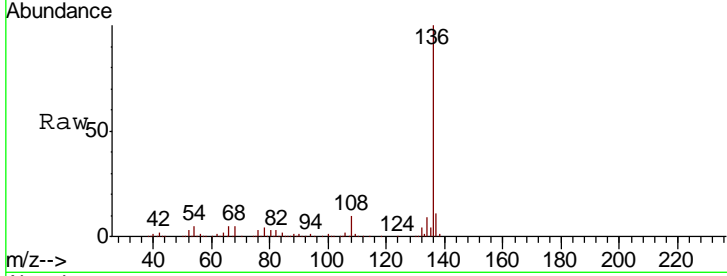




#21
 Naphthalene-d8
 Concen: 20.000 ng
 RT: 8.03 min Scan# 1011
 Delta R.T. -0.01 min
 Lab File: BF119037.D
 Acq: 24 Feb 2020 22:58

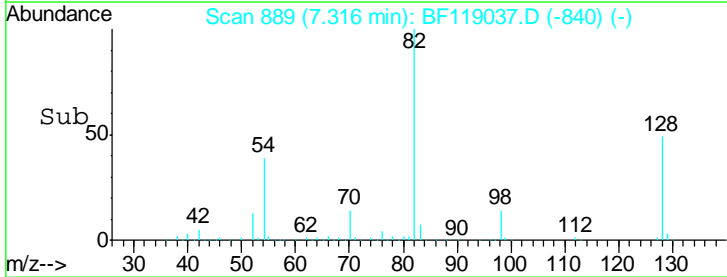
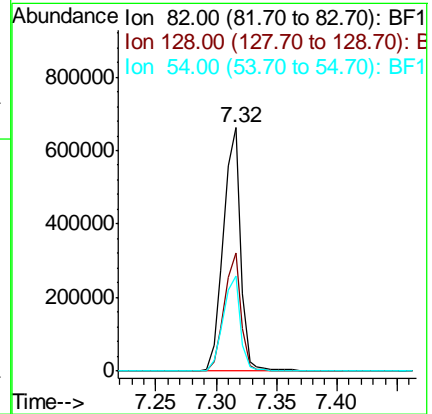
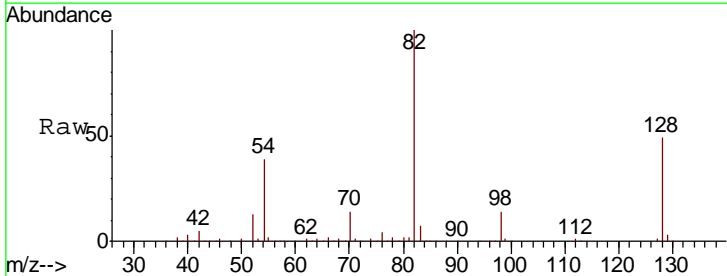
Instrument :
 BNA_F
 ClientSampleId :

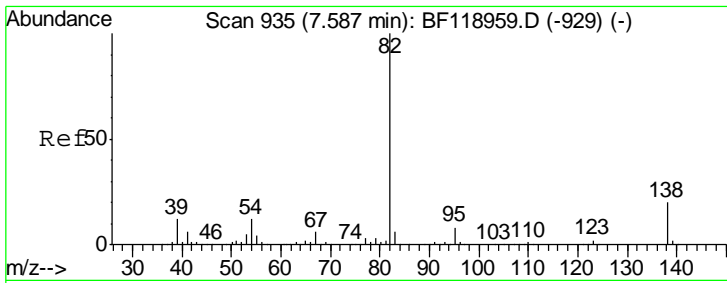
| Tgt Ion | Resp | Lower | Upper |
|---------|--------|-------|-------|
| 136 | 623259 | | |
| 137 | 11.1 | 8.9 | 13.3 |
| 54 | 5.0 | 3.8 | 5.6 |
| 68 | 5.2 | 4.2 | 6.2 |



#23
 Nitrobenzene-d5
 Concen: 55.401 ng
 RT: 7.32 min Scan# 889
 Delta R.T. -0.01 min
 Lab File: BF119037.D
 Acq: 24 Feb 2020 22:58

| Tgt Ion | Resp | Lower | Upper |
|---------|--------|-------|-------|
| 82 | 653956 | | |
| 128 | 48.8 | 38.2 | 57.2 |
| 54 | 39.1 | 31.3 | 46.9 |

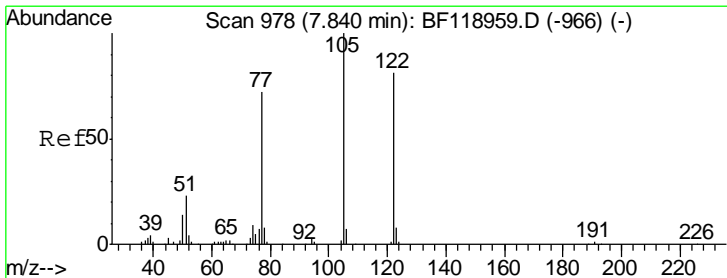
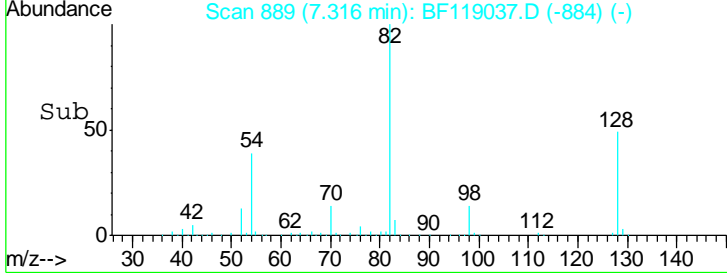
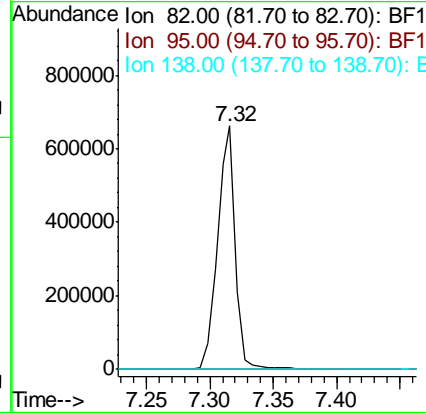
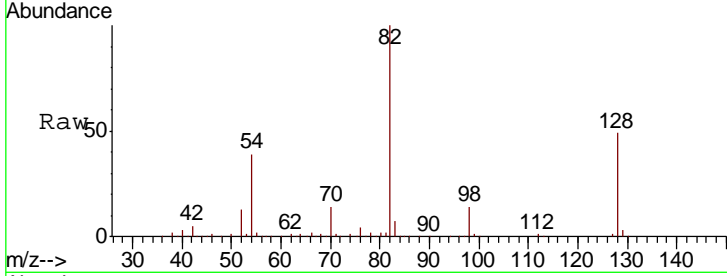




#25
 Isophorone
 Concen: 31.900 ng
 RT: 7.32 min Scan# 889
 Delta R.T. -0.27 min
 Lab File: BF119037.D
 Acq: 24 Feb 2020 22:58

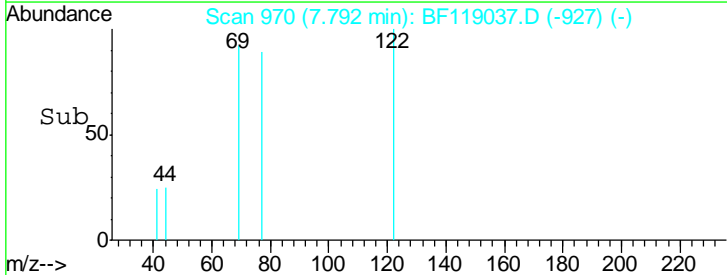
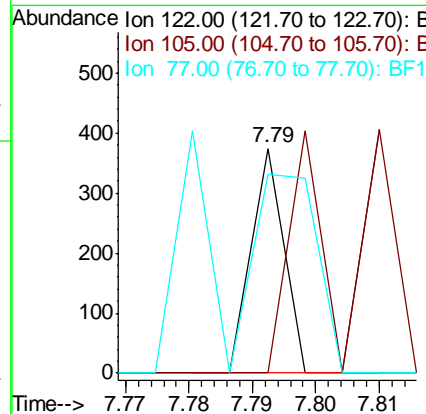
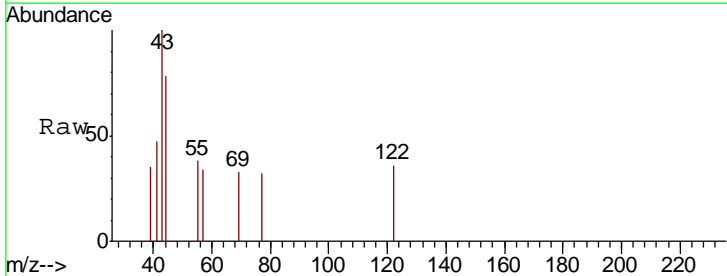
Instrument :
 BNA_F
 ClientSampled :

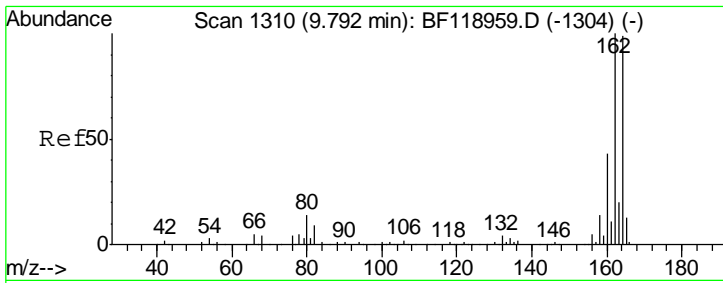
| Tgt Ion | Resp | Lower | Upper |
|---------|------|-------|-------|
| 82 | 100 | | |
| 95 | 0.0 | 6.1 | 9.1# |
| 138 | 0.0 | 15.8 | 23.6# |



#32
 Benzoic acid
 Concen: 6.699 ng
 RT: 7.79 min Scan# 970
 Delta R.T. -0.05 min
 Lab File: BF119037.D
 Acq: 24 Feb 2020 22:58

| Tgt Ion | Resp | Lower | Upper |
|---------|------|-------|--------|
| 122 | 100 | | |
| 105 | 0.0 | 102.2 | 142.2# |
| 77 | 88.8 | 68.6 | 108.6 |

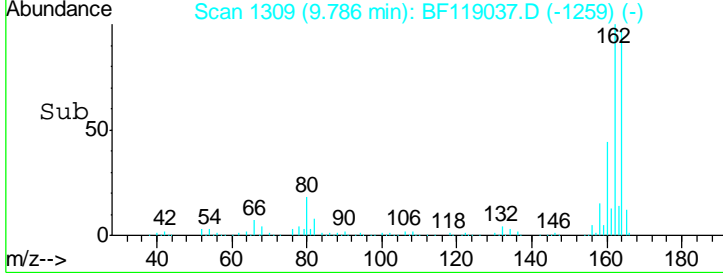
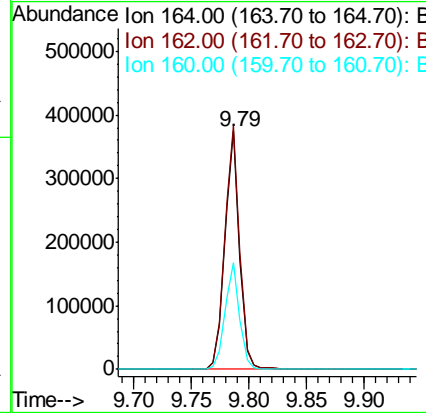
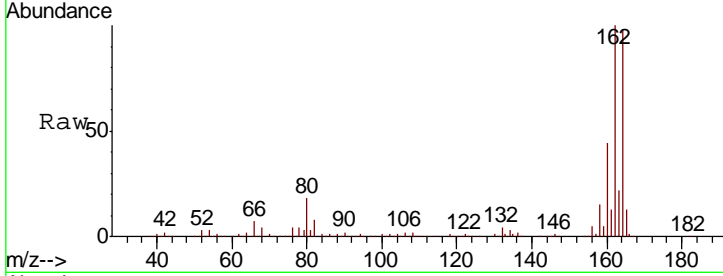




#39
 Acenaphthene-d10
 Concen: 20.000 ng
 RT: 9.79 min Scan# 1309
 Delta R.T. -0.01 min
 Lab File: BF119037.D
 Acq: 24 Feb 2020 22:58

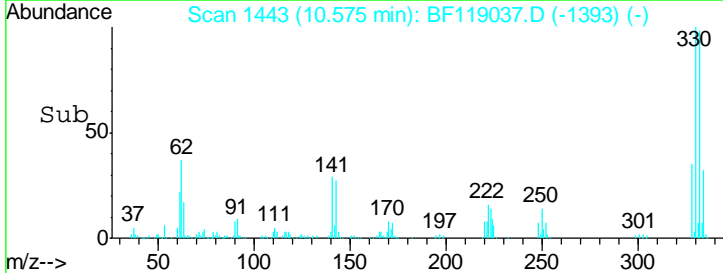
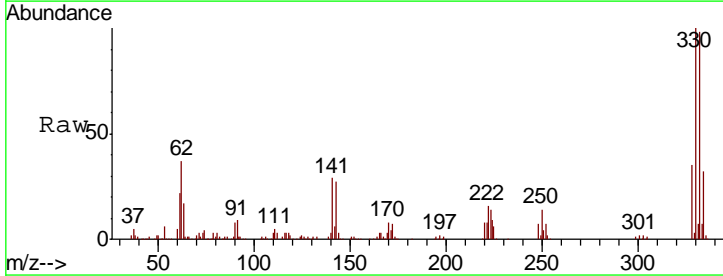
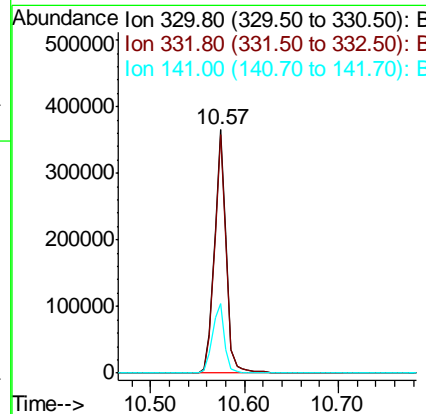
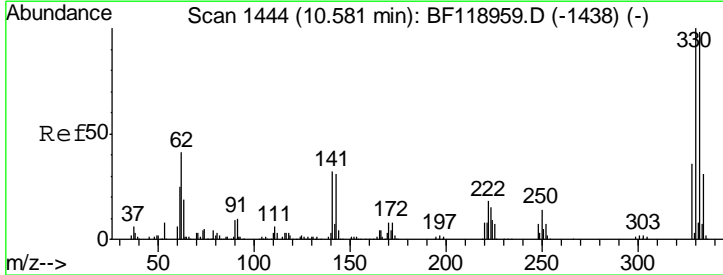
Instrument :
 BNA_F
 ClientSampled :

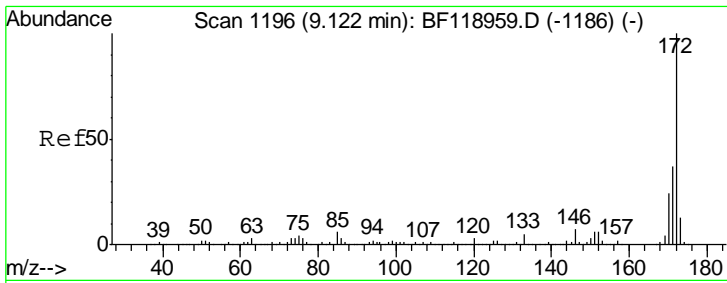
| Tgt Ion | Resp | Lower | Upper |
|---------|-------|-------|-------|
| 164 | 100 | | |
| 162 | 102.3 | 81.2 | 121.8 |
| 160 | 44.8 | 35.2 | 52.8 |



#42
 2,4,6-Tribromophenol
 Concen: 75.961 ng
 RT: 10.57 min Scan# 1443
 Delta R.T. -0.01 min
 Lab File: BF119037.D
 Acq: 24 Feb 2020 22:58

| Tgt Ion | Resp | Lower | Upper |
|---------|------|-------|-------|
| 330 | 100 | | |
| 332 | 97.1 | 77.1 | 115.7 |
| 141 | 29.4 | 23.0 | 34.6 |



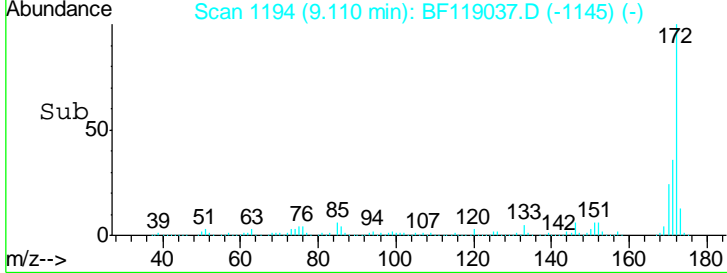
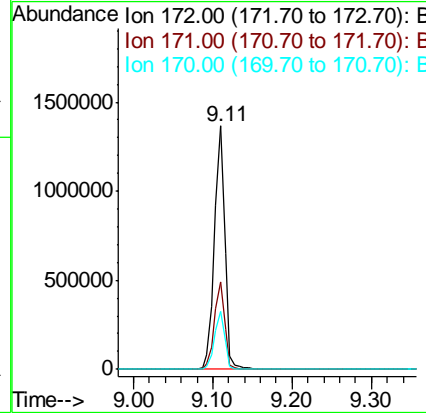
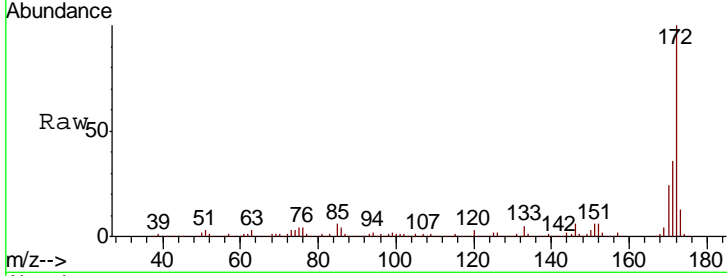


#45
 2-Fluorobiphenyl
 Concen: 56.109 ng
 RT: 9.11 min Scan# 1194
 Delta R.T. -0.01 min
 Lab File: BF119037.D
 Acq: 24 Feb 2020 22:58

Instrument :
 BNA_F
 ClientSampled :

Tot Ion:172 Resp: 1250898

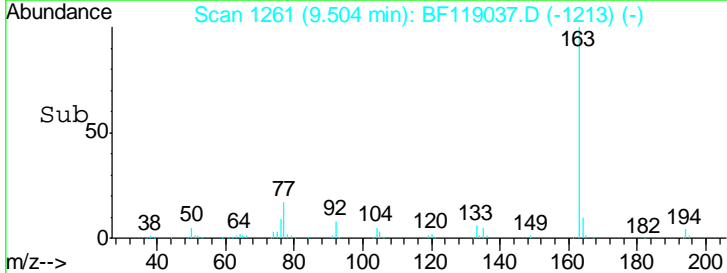
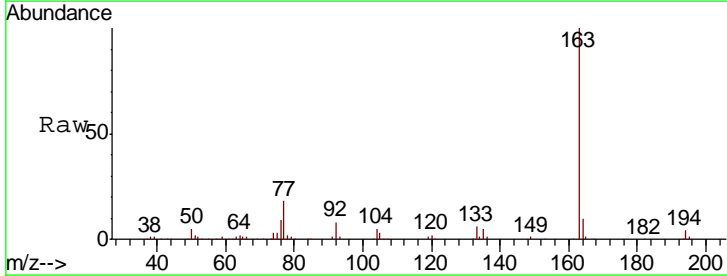
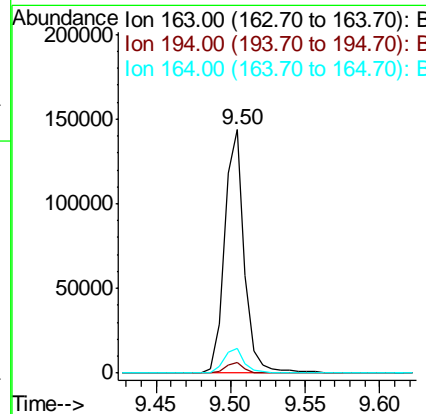
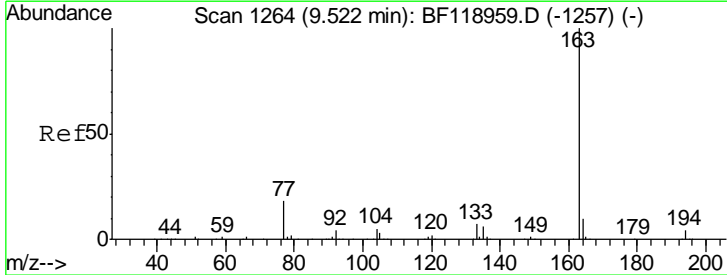
| Ion | Ratio | Lower | Upper |
|-----|-------|-------|-------|
| 172 | 100 | | |
| 171 | 36.2 | 29.4 | 44.2 |
| 170 | 23.6 | 19.6 | 29.4 |

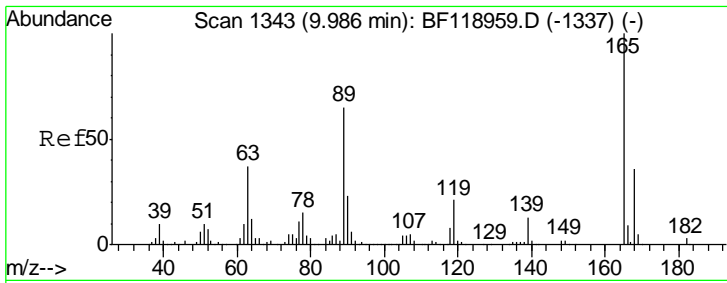


#50
 Dimethylphthalate
 Concen: 5.311 ng
 RT: 9.50 min Scan# 1261
 Delta R.T. -0.02 min
 Lab File: BF119037.D
 Acq: 24 Feb 2020 22:58

Tgt Ion:163 Resp: 133380

| Ion | Ratio | Lower | Upper |
|-----|-------|-------|-------|
| 163 | 100 | | |
| 194 | 4.2 | 3.4 | 5.2 |
| 164 | 10.3 | 8.2 | 12.2 |

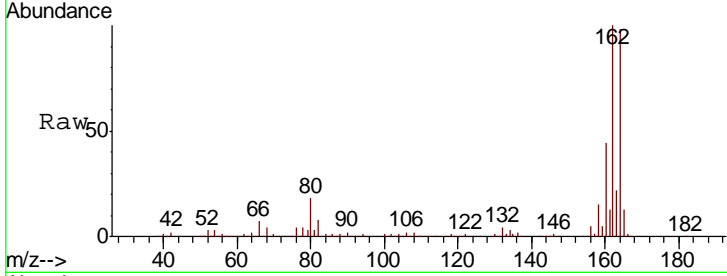




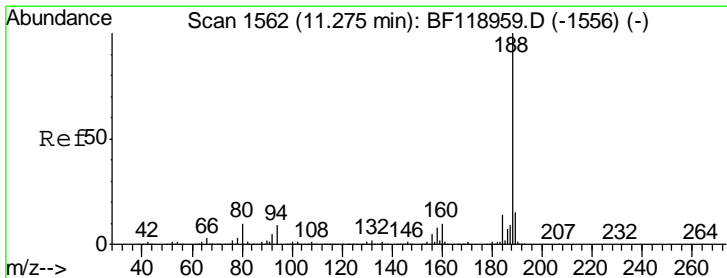
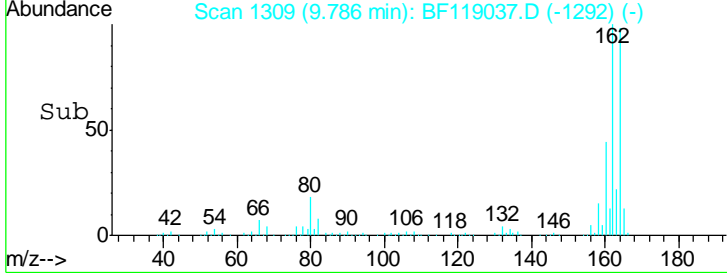
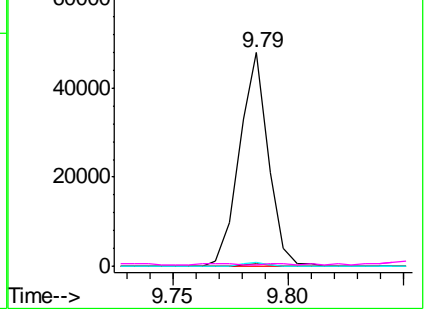
#57
 2,4-Dinitrotoluene
 Concen: 5.770 ng
 RT: 9.79 min Scan# 1309
 Delta R.T. -0.20 min
 Lab File: BF119037.D
 Acq: 24 Feb 2020 22:58

Instrument :
 BNA_F
 ClientSampled :

| Tgt Ion | Resp | Lower | Upper |
|---------|-------|-------|-------|
| 165 | 41734 | | |
| 63 | 1.1 | 29.8 | 44.8# |
| 89 | 1.6 | 51.9 | 77.9# |
| 182 | 0.8 | 2.3 | 3.5# |

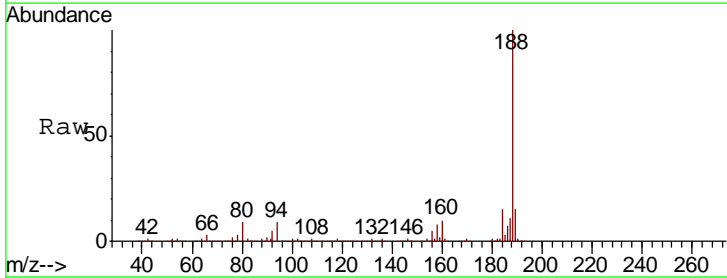


Abundance Ion 165.00 (164.70 to 165.70): E
 Ion 63.00 (62.70 to 63.70): BF1
 Ion 89.00 (88.70 to 89.70): BF1
 Ion 182.00 (181.70 to 182.70): E

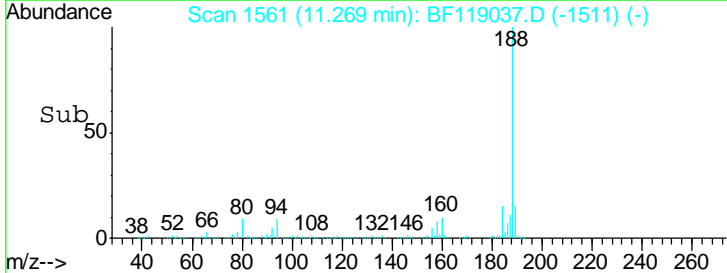
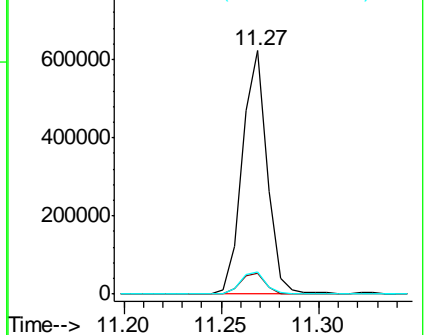


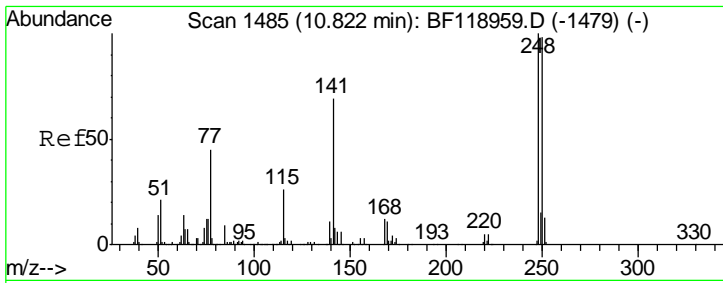
#64
 Phenanthrene-d10
 Concen: 20.000 ng
 RT: 11.27 min Scan# 1561
 Delta R.T. -0.01 min
 Lab File: BF119037.D
 Acq: 24 Feb 2020 22:58

| Tgt Ion | Resp | Lower | Upper |
|---------|--------|-------|-------|
| 188 | 548101 | | |
| 94 | 8.6 | 7.0 | 10.6 |
| 80 | 9.0 | 7.9 | 11.9 |



Abundance Ion 188.00 (187.70 to 188.70): E
 Ion 94.00 (93.70 to 94.70): BF1
 Ion 80.00 (79.70 to 80.70): BF1

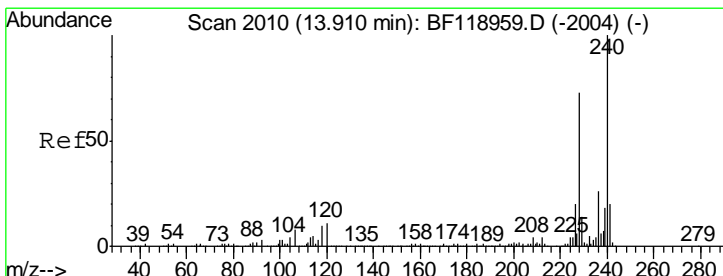
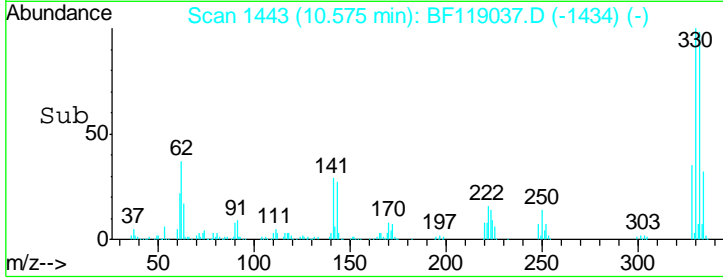
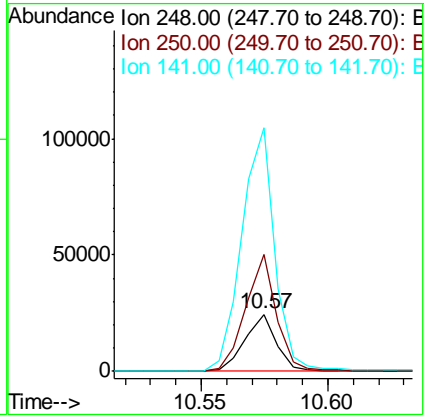
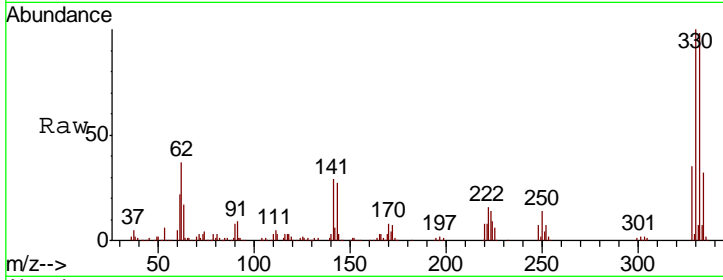




#67
 4-Bromophenyl-phenylether
 Concen: 2.960 ng
 RT: 10.57 min Scan# 1443
 Delta R.T. -0.25 min
 Lab File: BF119037.D
 Acq: 24 Feb 2020 22:58

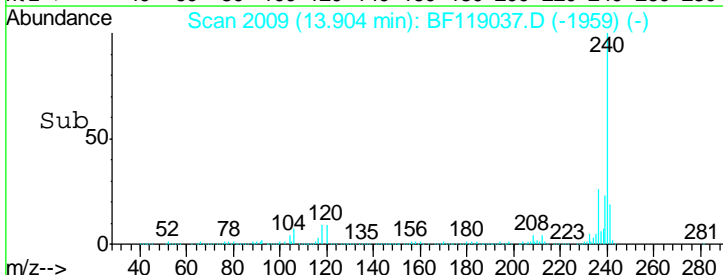
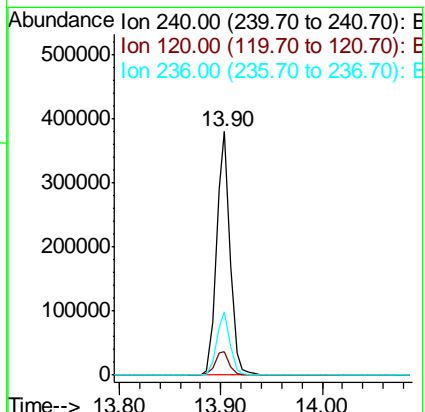
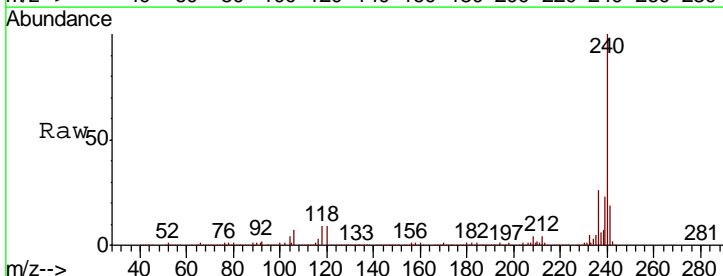
Instrument :
 BNA_F
 ClientSampled :

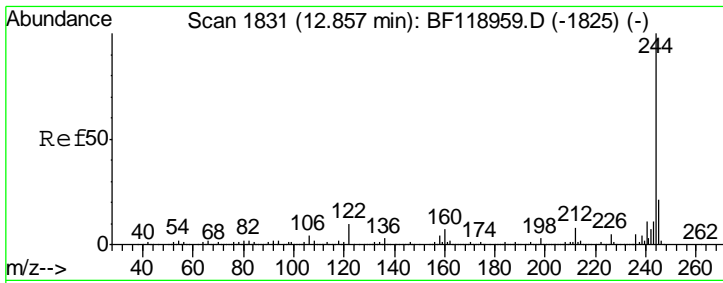
| Tgt Ion | Resp | Lower | Upper |
|---------|-------|-------|--------|
| 248 | 21210 | | |
| 248 | 100 | | |
| 250 | 206.9 | 78.8 | 118.2# |
| 141 | 429.1 | 55.3 | 82.9# |



#76
 Chrysene-d12
 Concen: 20.000 ng
 RT: 13.90 min Scan# 2009
 Delta R.T. -0.01 min
 Lab File: BF119037.D
 Acq: 24 Feb 2020 22:58

| Tgt Ion | Resp | Lower | Upper |
|---------|--------|-------|-------|
| 240 | 348529 | | |
| 240 | 100 | | |
| 120 | 9.4 | 8.9 | 13.3 |
| 236 | 26.0 | 20.6 | 30.8 |



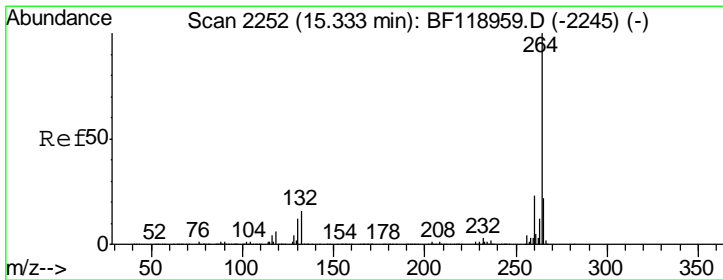
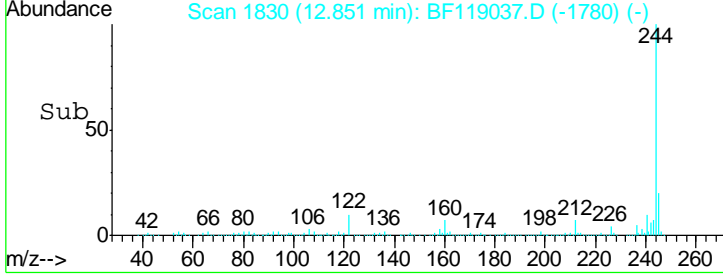
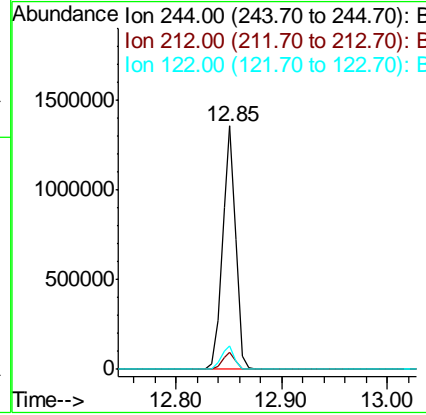
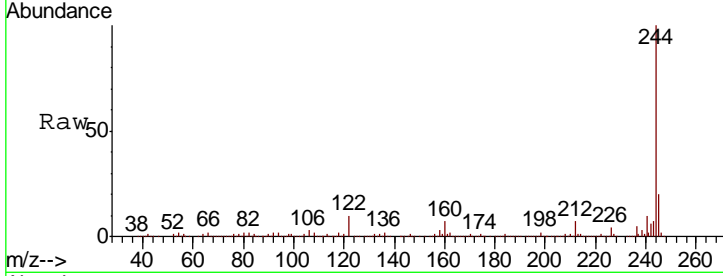


#79
 Terphenyl-d14
 Concen: 59.346 ng
 RT: 12.85 min Scan# 1830
 Delta R.T. -0.01 min
 Lab File: BF119037.D
 Acq: 24 Feb 2020 22:58

Instrument :
 BNA_F
 ClientSampled :

Tgt Ion: 244 Resp: 1201387

| Ion | Ratio | Lower | Upper |
|-----|-------|-------|-------|
| 244 | 100 | | |
| 212 | 7.1 | 6.3 | 9.5 |
| 122 | 9.8 | 8.4 | 12.6 |



#87
 Perylene-d12
 Concen: 20.000 ng
 RT: 15.33 min Scan# 2252
 Delta R.T. -0.00 min
 Lab File: BF119037.D
 Acq: 24 Feb 2020 22:58

Tgt Ion: 264 Resp: 376094

| Ion | Ratio | Lower | Upper |
|-----|-------|-------|-------|
| 264 | 100 | | |
| 260 | 24.5 | 18.6 | 28.0 |
| 265 | 21.4 | 17.3 | 25.9 |

