

Data Path : Z:\SVOASRV\HPCHEM1\BNA F\DATA\BF022420\  
 Data File : BF119047.D  
 Acq On : 25 Feb 2020 3:50  
 Operator : CG/JU  
 Sample : L1635-17  
 Misc :  
 ALS Vial : 22 Sample Multiplier: 1

Instrument :  
 BNA\_F  
 ClientSampleId :

Quant Time: Feb 25 06:45:13 2020  
 Quant Method : Z:\SVOASRV\HPCHEM1\BNA F\METHODS\8270-BF022020.M  
 Quant Title : ASP BNA STANDARDS FOR 5 POINT CALIBRATION  
 QLast Update : Thu Feb 20 17:40:17 2020  
 Response via : Initial Calibration

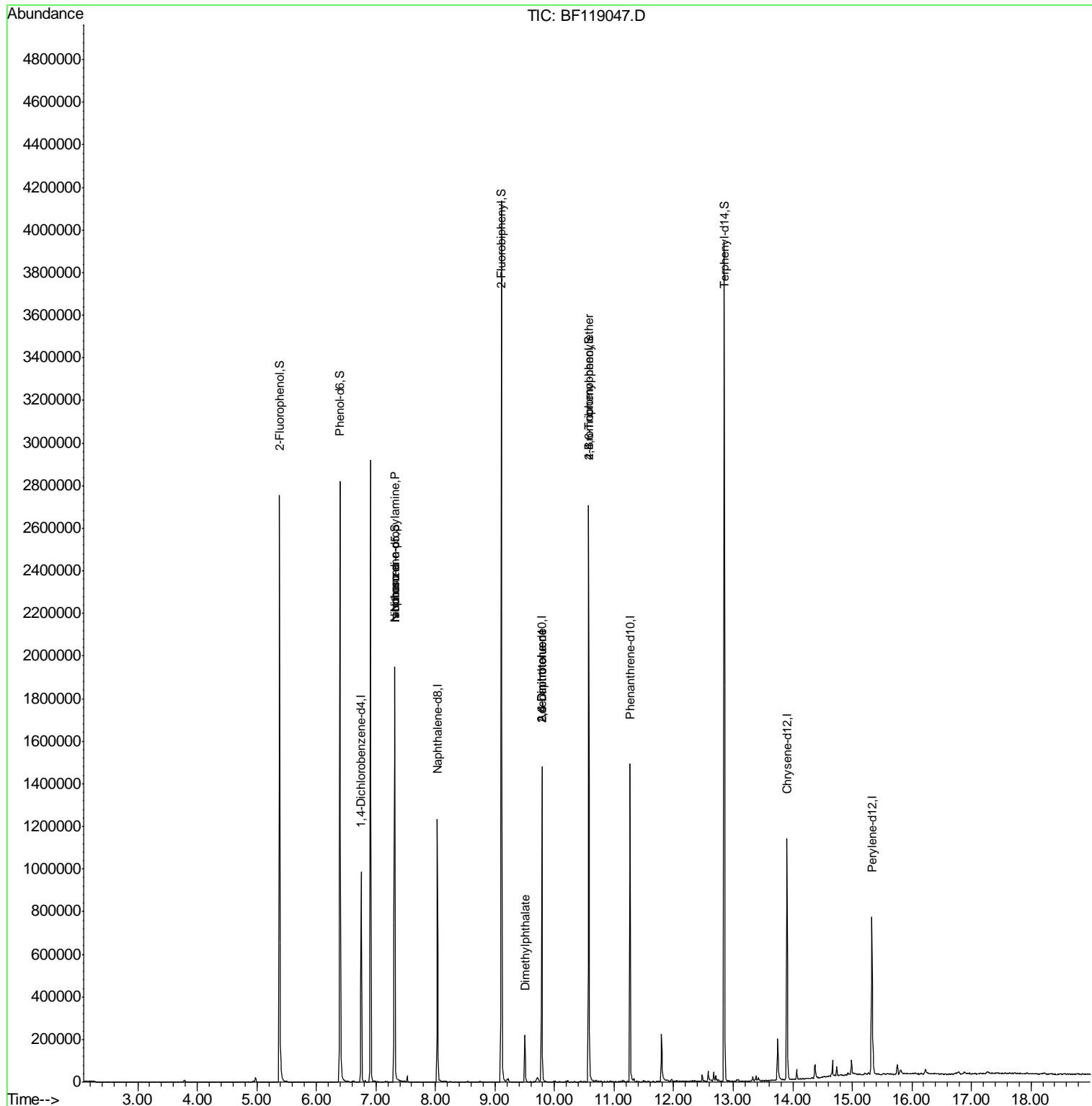
Internal Standards	R.T.	QIon	Response	Conc	Units	Dev(Min)
1) 1,4-Dichlorobenzene-d4	6.75	152	152762	20.00	ng	-0.01
21) Naphthalene-d8	8.03	136	576504	20.00	ng	-0.01
39) Acenaphthene-d10	9.79	164	311162	20.00	ng	0.00
64) Phenanthrene-d10	11.27	188	546060	20.00	ng	0.00
76) Chrysene-d12	13.90	240	382243	20.00	ng	0.00
87) Perylene-d12	15.33	264	360852	20.00	ng	0.00
System Monitoring Compounds						
5) 2-Fluorophenol	5.38	112	862786	94.39	ng	0.00
7) Phenol-d6	6.40	99	1029971	92.65	ng	0.00
23) Nitrobenzene-d5	7.32	82	685884	62.82	ng	-0.01
42) 2,4,6-Tribromophenol	10.57	330	355341	87.30	ng	0.00
45) 2-Fluorobiphenyl	9.11	172	1336504	63.28	ng	-0.01
79) Terphenyl-d14	12.85	244	1430725	64.44	ng	0.00
Target Compounds						
19) n-Nitroso-di-n-propylamine	7.32	70	93801	14.480	ng	# 77
25) Isophorone	7.32	82	685875	36.170	ng	# 63
50) Dimethylphthalate	9.50	163	103442	4.347	ng	99
51) 2,6-Dinitrotoluene	9.79	165	39193	7.414	ng	# 30
57) 2,4-Dinitrotoluene	9.79	165	39193	5.720	ng	# 29
67) 4-Bromophenyl-phenylether	10.57	248	23261	3.259	ng	# 1

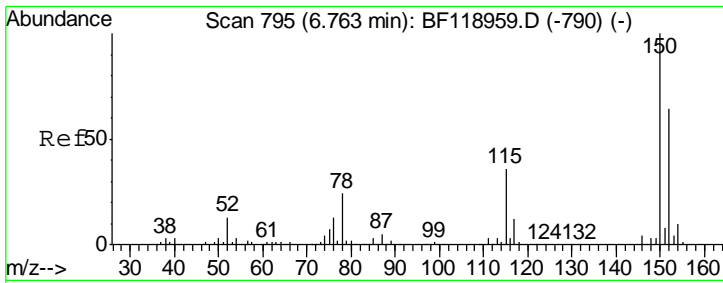
(#) = qualifier out of range (m) = manual integration (+) = signals summed

Data Path : Z:\SVOASRV\HPCHEM1\BNA F\DATA\BF022420\  
 Data File : BF119047.D  
 Acq On : 25 Feb 2020 3:50  
 Operator : CG/JU  
 Sample : L1635-17  
 Misc :  
 ALS Vial : 22 Sample Multiplier: 1

Instrument :  
 BNA\_F  
 Client Sampled :

Quant Time: Feb 25 06:45:13 2020  
 Quant Method : Z:\SVOASRV\HPCHEM1\BNA F\METHODS\8270-BF022020.M  
 Quant Title : ASP BNA STANDARDS FOR 5 POINT CALIBRATION  
 QLast Update : Thu Feb 20 17:40:17 2020  
 Response via : Initial Calibration

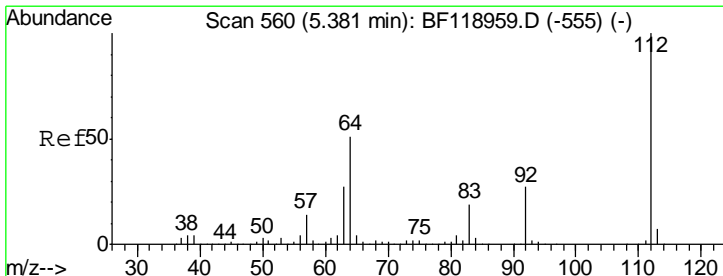
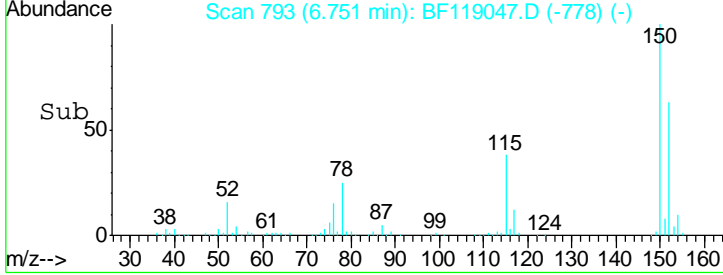
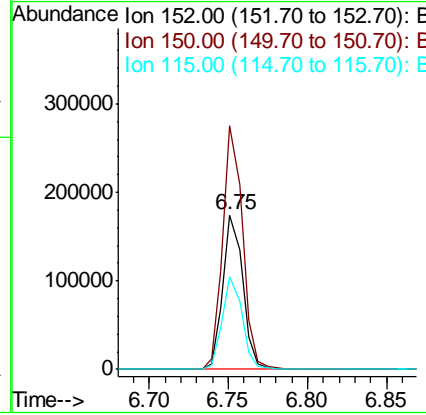
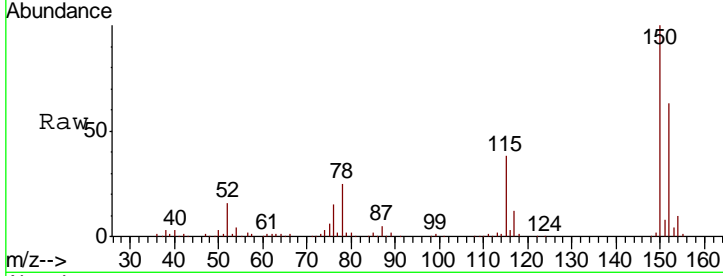




#1  
 1,4-Dichlorobenzene-d4  
 Concen: 20.000 ng  
 RT: 6.75 min Scan# 793  
 Delta R.T. -0.01 min  
 Lab File: BF119047.D  
 Acq: 25 Feb 2020 3:50

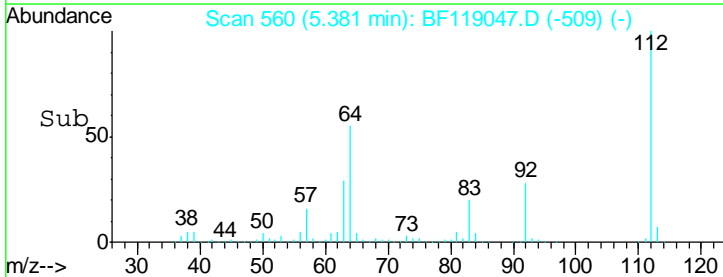
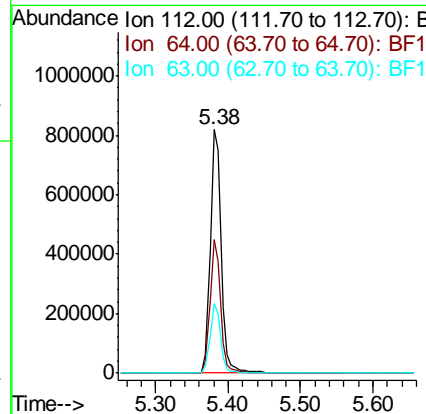
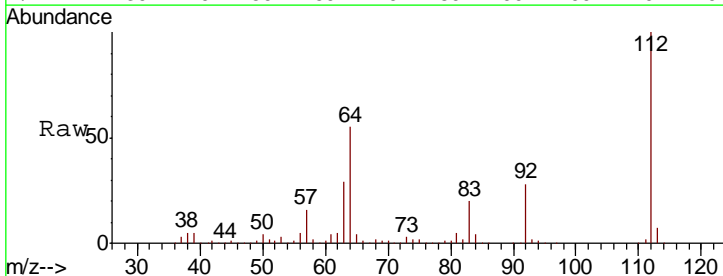
Instrument :  
 BNA\_F  
 ClientSampled :

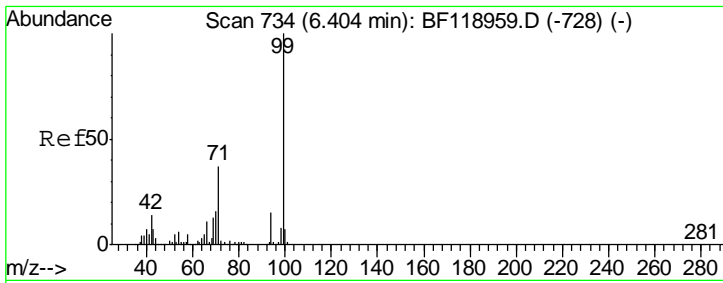
Tgt Ion	Resp	Lower	Upper
152	152762		
150	157.7	124.3	186.5
115	60.3	44.6	67.0



#5  
 2-Fluorophenol  
 Concen: 94.387 ng  
 RT: 5.38 min Scan# 560  
 Delta R.T. -0.00 min  
 Lab File: BF119047.D  
 Acq: 25 Feb 2020 3:50

Tgt Ion	Resp	Lower	Upper
112	862786		
64	55.0	40.4	60.6
63	28.8	21.3	31.9

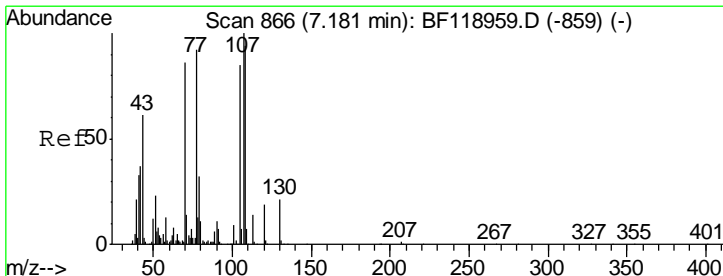
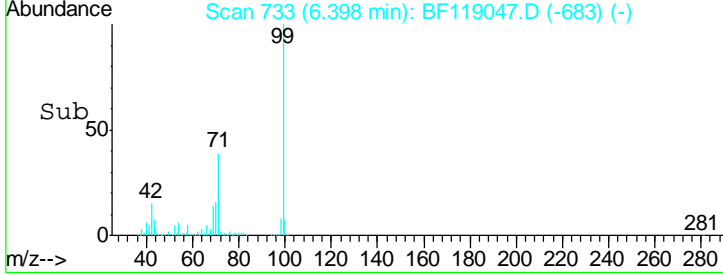
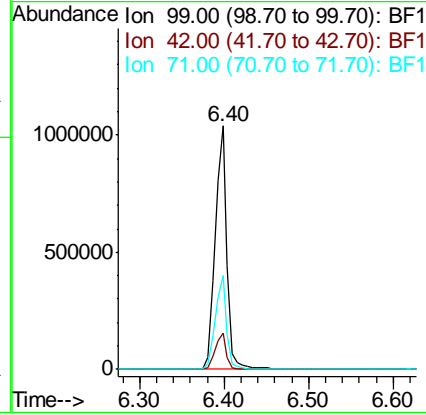
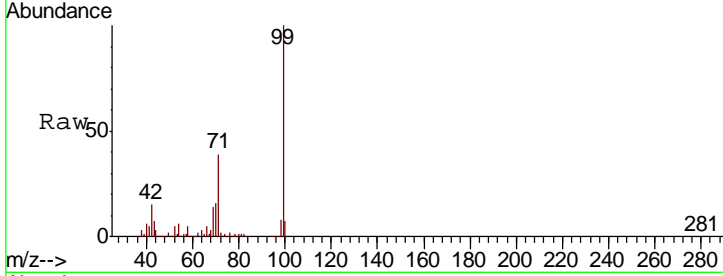




#7  
 Phenol-d6  
 Concen: 92.647 ng  
 RT: 6.40 min Scan# 733  
 Delta R.T. -0.01 min  
 Lab File: BF119047.D  
 Acq: 25 Feb 2020 3:50

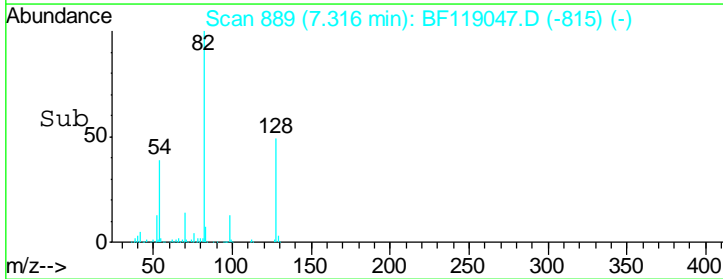
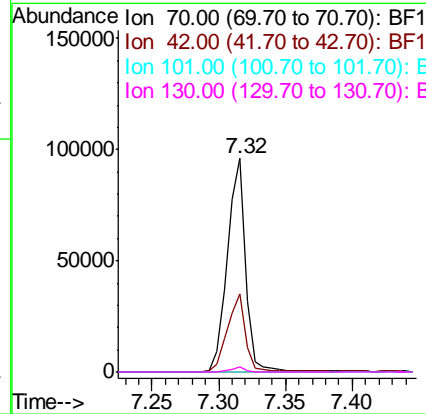
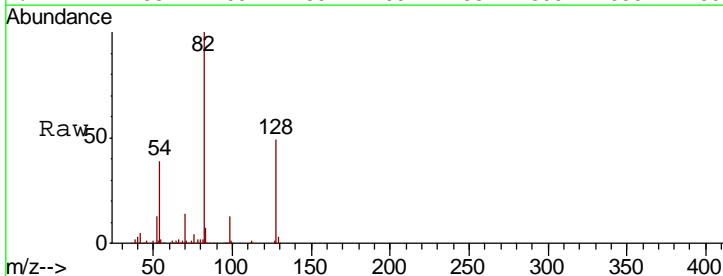
Instrument :  
 BNA\_F  
 ClientSampled :

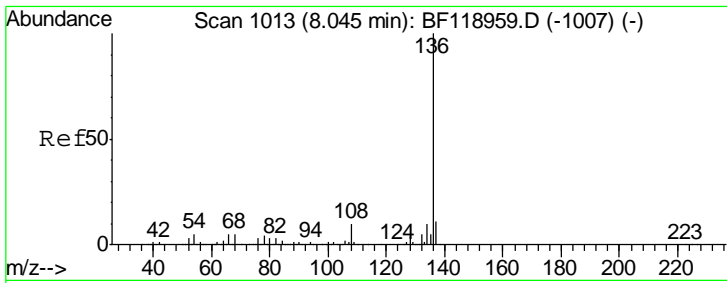
Tgt Ion	Resp	Lower	Upper
99	1029971		
42	14.9	11.4	17.0
71	38.8	29.8	44.6



#19  
 n-Nitroso-di-n-propylamine  
 Concen: 14.480 ng  
 RT: 7.32 min Scan# 889  
 Delta R.T. 0.14 min  
 Lab File: BF119047.D  
 Acq: 25 Feb 2020 3:50

Tgt Ion	Resp	Lower	Upper
70	93801		
42	36.4	34.6	51.8
101	0.0	8.1	12.1#
130	2.3	19.4	29.2#

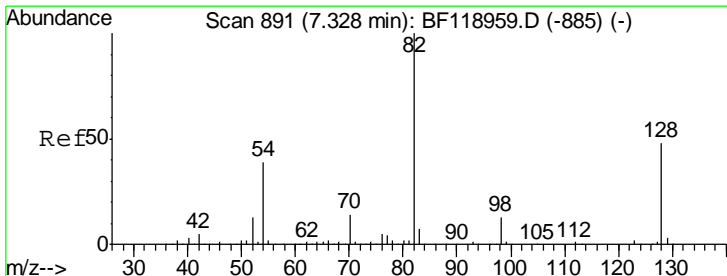
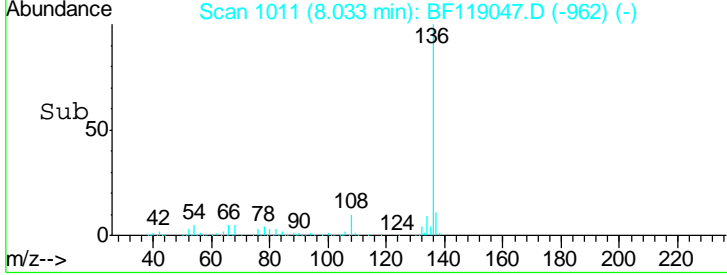
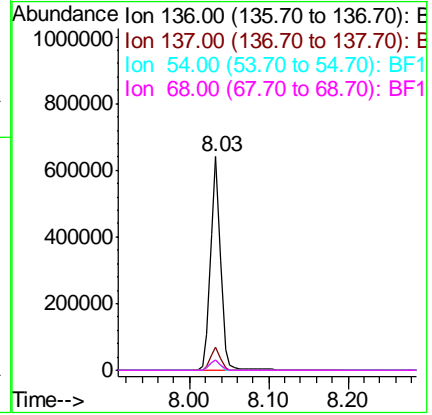
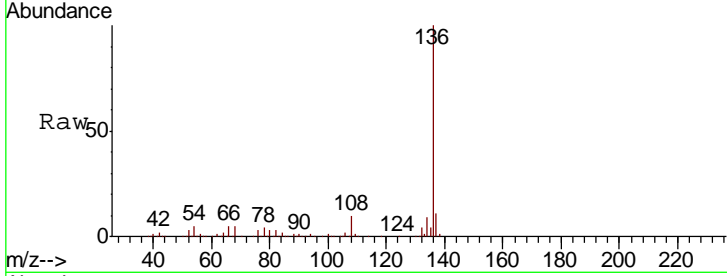




#21  
 Naphthalene-d8  
 Concen: 20.000 ng  
 RT: 8.03 min Scan# 1011  
 Delta R.T. -0.01 min  
 Lab File: BF119047.D  
 Acq: 25 Feb 2020 3:50

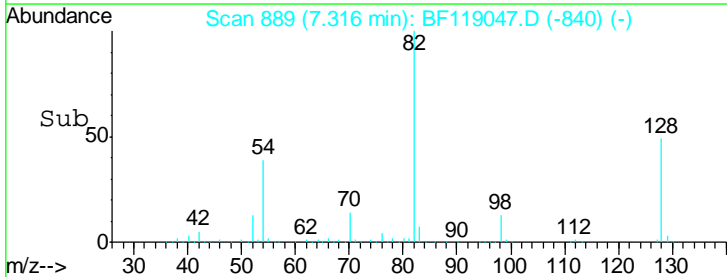
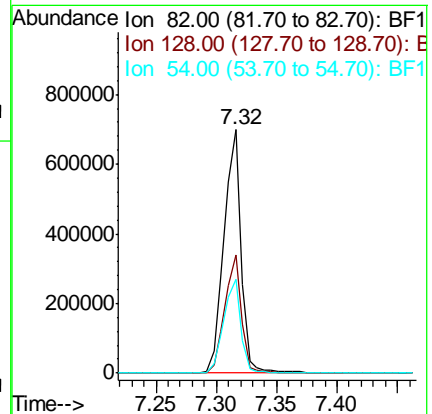
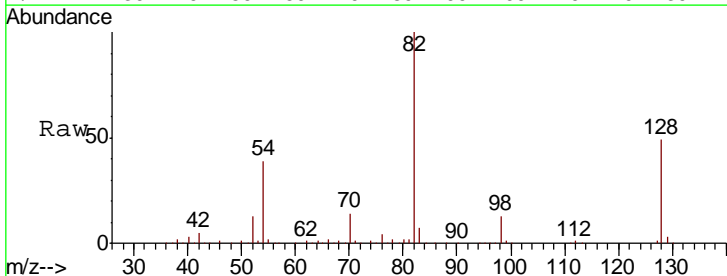
Instrument :  
 BNA\_F  
 ClientSampled :

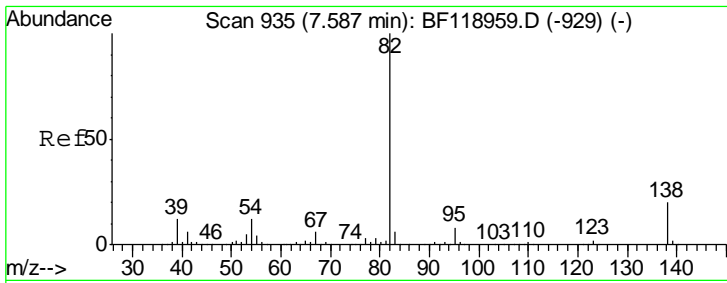
Tgt Ion	Resp	Lower	Upper
136	576504		
137	10.7	8.9	13.3
54	5.0	3.8	5.6
68	5.0	4.2	6.2



#23  
 Nitrobenzene-d5  
 Concen: 62.818 ng  
 RT: 7.32 min Scan# 889  
 Delta R.T. -0.01 min  
 Lab File: BF119047.D  
 Acq: 25 Feb 2020 3:50

Tgt Ion	Resp	Lower	Upper
82	685884		
128	48.5	38.2	57.2
54	38.8	31.3	46.9

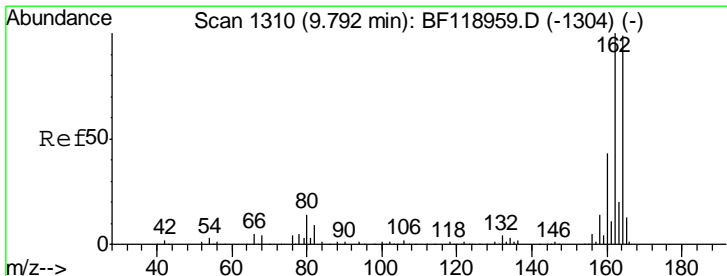
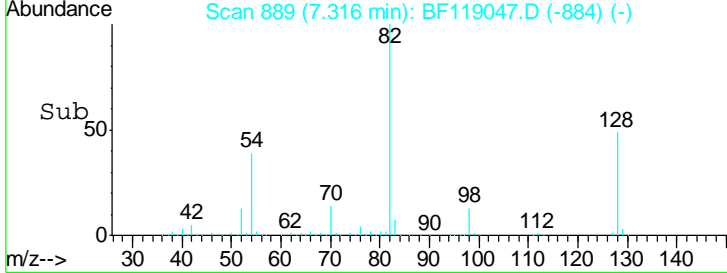
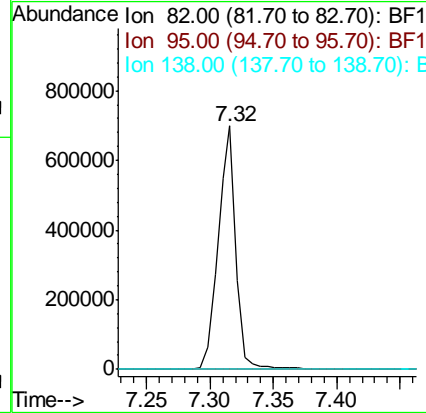
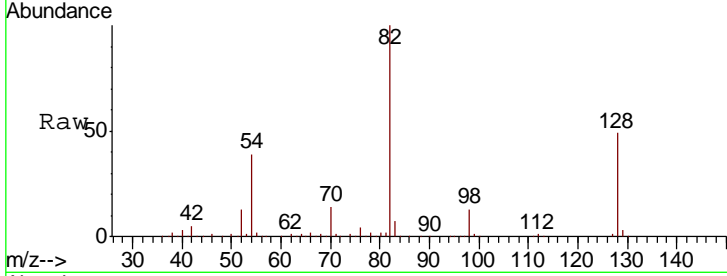




#25  
 Isophorone  
 Concen: 36.170 ng  
 RT: 7.32 min Scan# 889  
 Delta R.T. -0.27 min  
 Lab File: BF119047.D  
 Acq: 25 Feb 2020 3:50

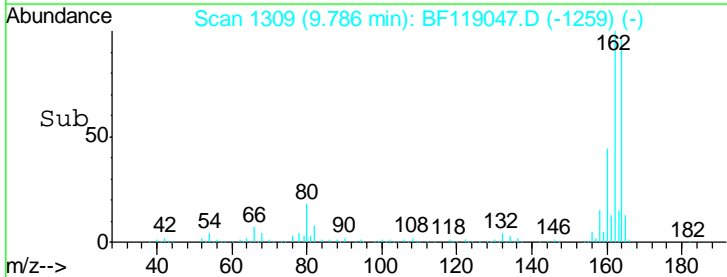
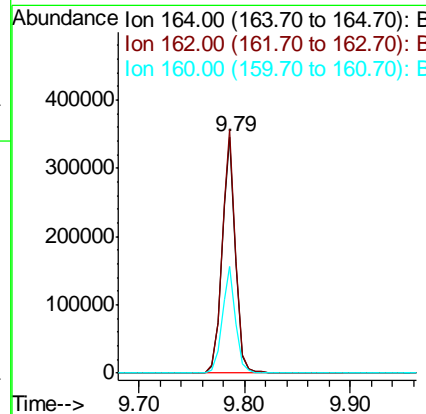
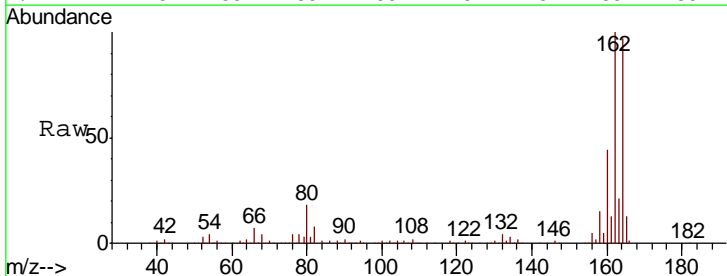
Instrument :  
 BNA\_F  
 ClientSampled :

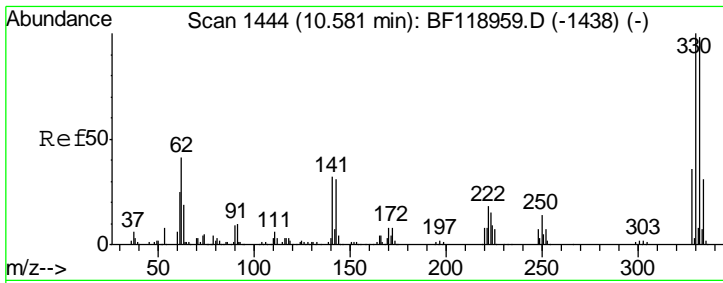
Tgt Ion	Resp	Lower	Upper
82	100		
95	0.0	6.1	9.1#
138	0.0	15.8	23.6#



#39  
 Acenaphthene-d10  
 Concen: 20.000 ng  
 RT: 9.79 min Scan# 1309  
 Delta R.T. -0.01 min  
 Lab File: BF119047.D  
 Acq: 25 Feb 2020 3:50

Tgt Ion	Resp	Lower	Upper
164	100		
162	103.0	81.2	121.8
160	44.9	35.2	52.8

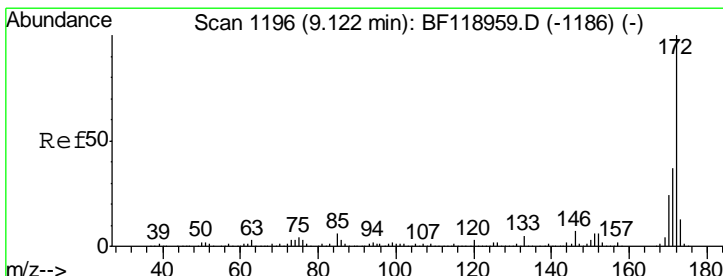
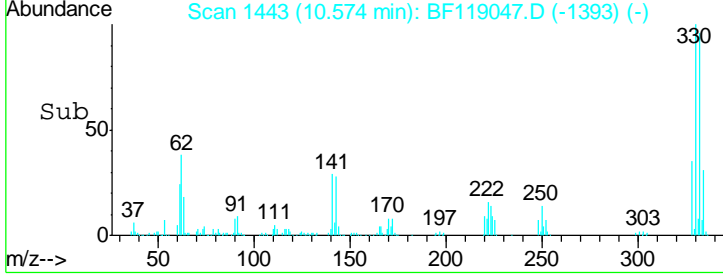
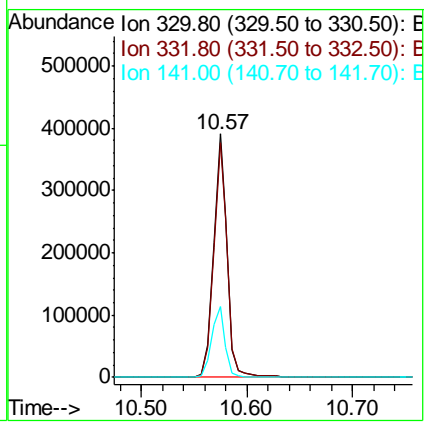
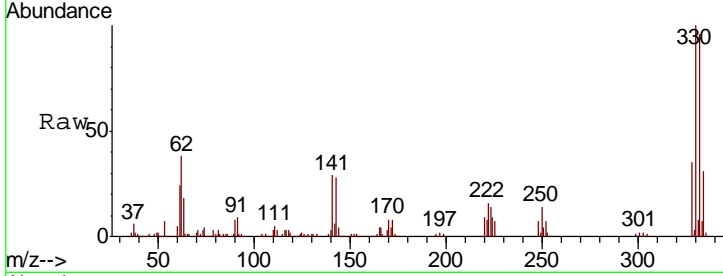




#42  
 2,4,6-Tribromophenol  
 Concen: 87.296 ng  
 RT: 10.57 min Scan# 1443  
 Delta R.T. -0.01 min  
 Lab File: BF119047.D  
 Acq: 25 Feb 2020 3:50

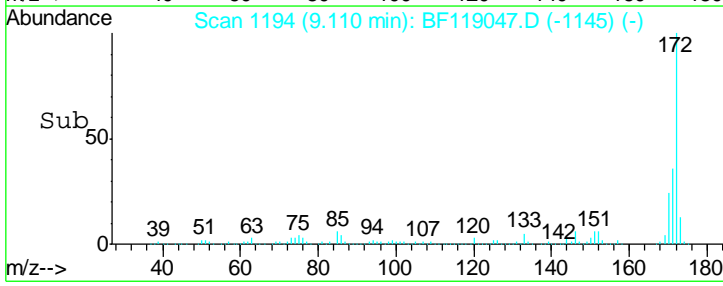
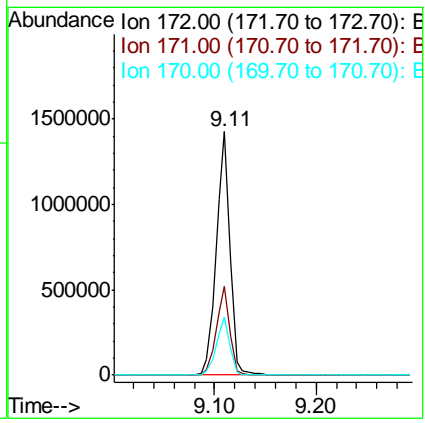
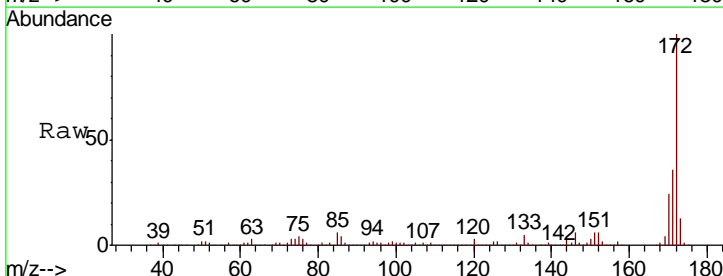
Instrument :  
 BNA\_F  
 ClientSampled :

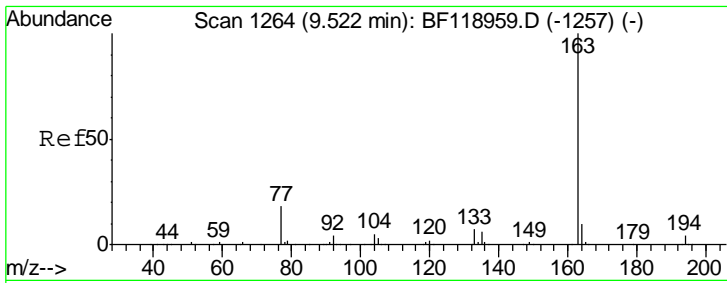
Tgt Ion	Resp	Lower	Upper
330	100		
332	97.0	77.1	115.7
141	29.1	23.0	34.6



#45  
 2-Fluorobiphenyl  
 Concen: 63.276 ng  
 RT: 9.11 min Scan# 1194  
 Delta R.T. -0.01 min  
 Lab File: BF119047.D  
 Acq: 25 Feb 2020 3:50

Tgt Ion	Resp	Lower	Upper
172	100		
171	36.3	29.4	44.2
170	23.7	19.6	29.4

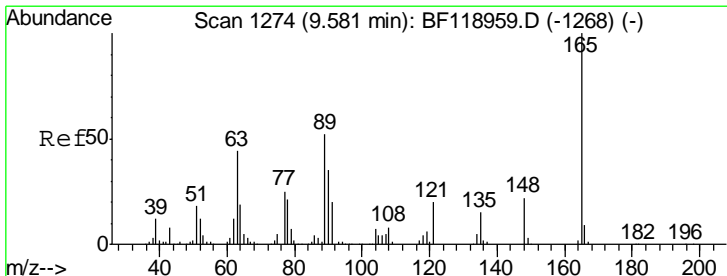
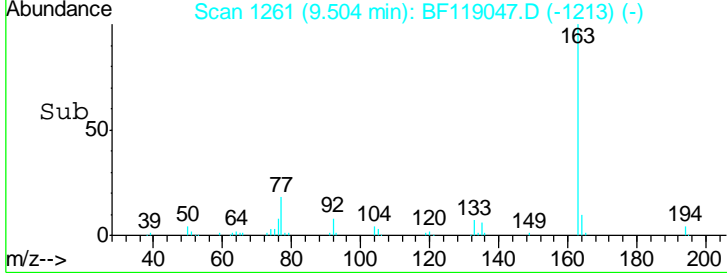
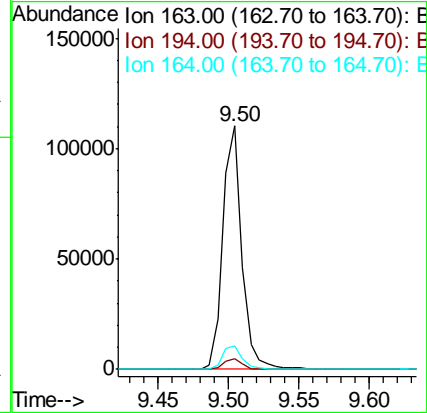
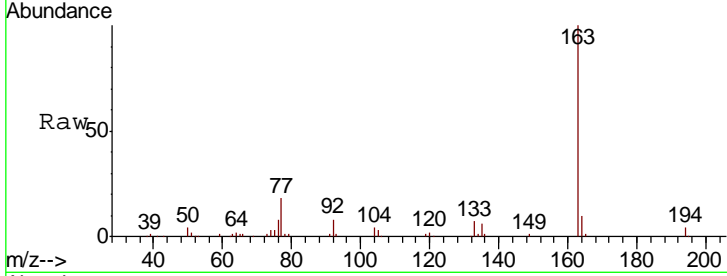




#50  
 Dimethylphthalate  
 Concen: 4.347 ng  
 RT: 9.50 min Scan# 1261  
 Delta R.T. -0.02 min  
 Lab File: BF119047.D  
 Acq: 25 Feb 2020 3:50

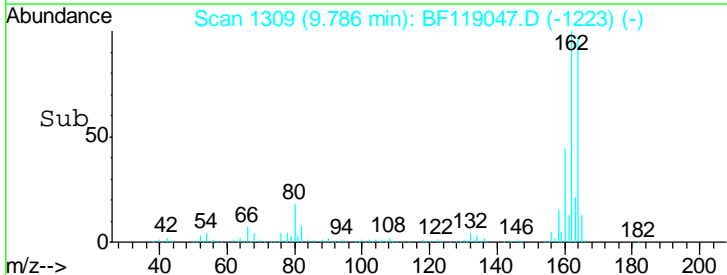
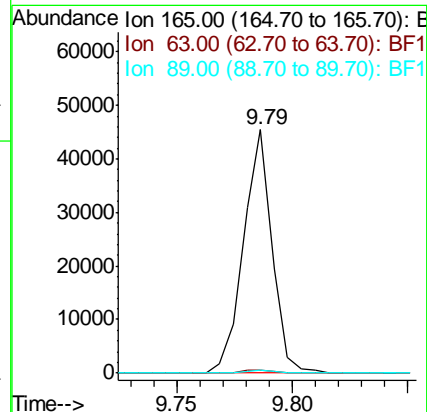
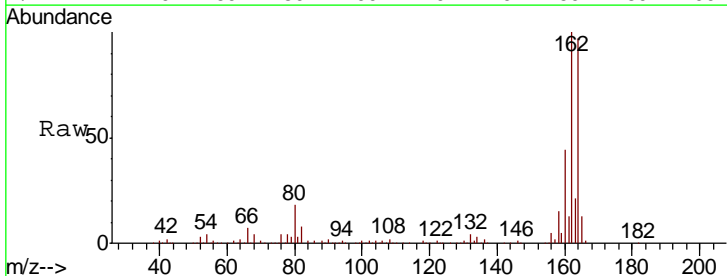
Instrument :  
 BNA\_F  
 ClientSampled :

Tgt Ion	Resp	Lower	Upper
163	103442		
194	4.3	3.4	5.2
164	9.8	8.2	12.2

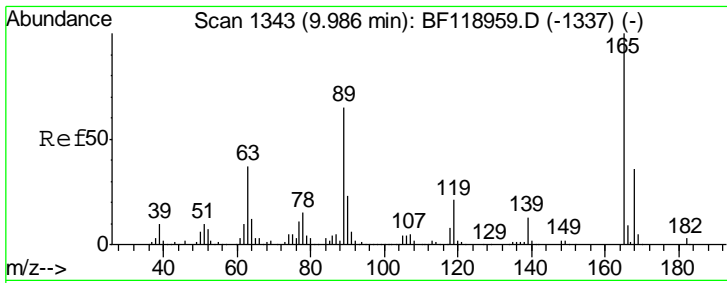


#51  
 2,6-Dinitrotoluene  
 Concen: 7.414 ng  
 RT: 9.79 min Scan# 1309  
 Delta R.T. 0.21 min  
 Lab File: BF119047.D  
 Acq: 25 Feb 2020 3:50

Tgt Ion	Resp	Lower	Upper
165	39193		
63	1.1	37.9	56.9#
89	1.4	41.4	62.0#



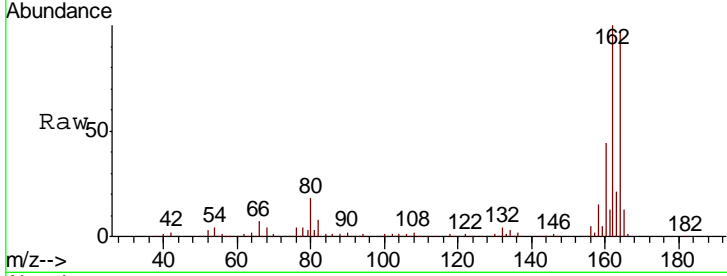




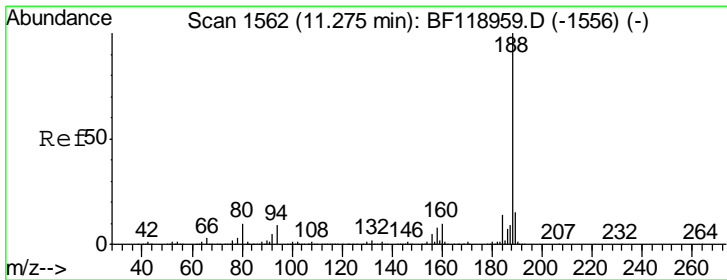
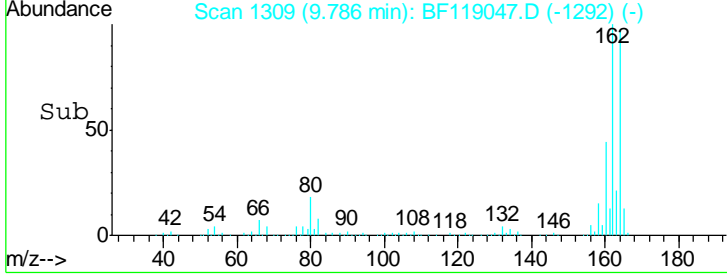
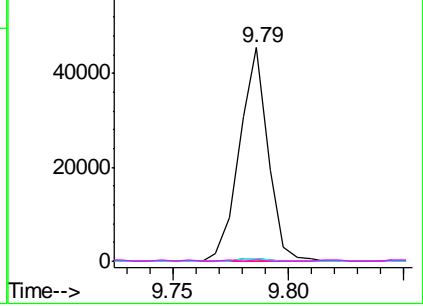
#57  
 2,4-Dinitrotoluene  
 Concen: 5.720 ng  
 RT: 9.79 min Scan# 1309  
 Delta R.T. -0.20 min  
 Lab File: BF119047.D  
 Acq: 25 Feb 2020 3:50

Instrument :  
 BNA\_F  
 ClientSampled :

Tgt Ion	Resp	Lower	Upper
165	39193		
63	1.1	29.8	44.8#
89	1.4	51.9	77.9#
182	0.7	2.3	3.5#

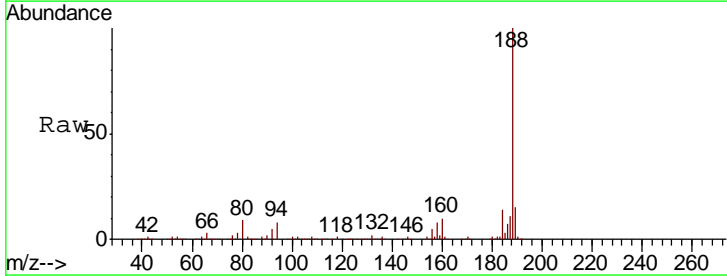


Abundance Ion 165.00 (164.70 to 165.70): E  
 Ion 63.00 (62.70 to 63.70): BF1  
 Ion 89.00 (88.70 to 89.70): BF1  
 Ion 182.00 (181.70 to 182.70): E

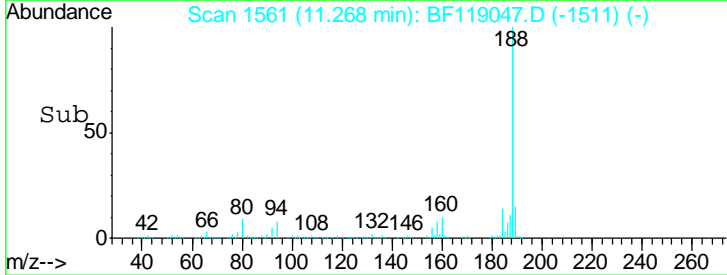
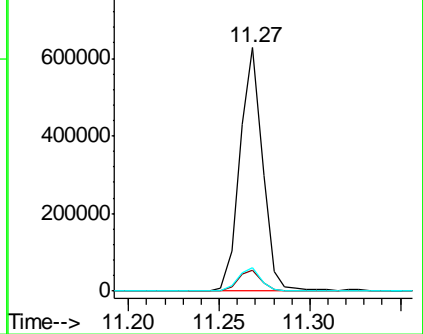


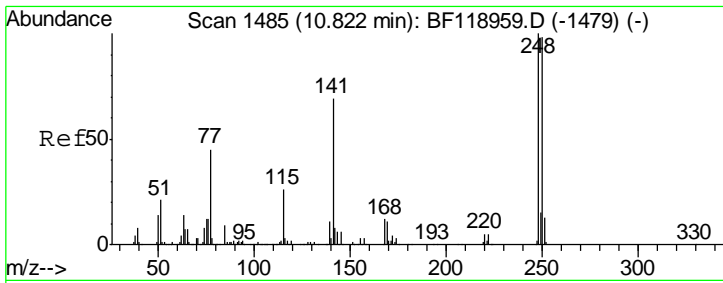
#64  
 Phenanthrene-d10  
 Concen: 20.000 ng  
 RT: 11.27 min Scan# 1561  
 Delta R.T. -0.01 min  
 Lab File: BF119047.D  
 Acq: 25 Feb 2020 3:50

Tgt Ion	Resp	Lower	Upper
188	546060		
94	8.5	7.0	10.6
80	9.4	7.9	11.9



Abundance Ion 188.00 (187.70 to 188.70): E  
 Ion 94.00 (93.70 to 94.70): BF1  
 Ion 80.00 (79.70 to 80.70): BF1

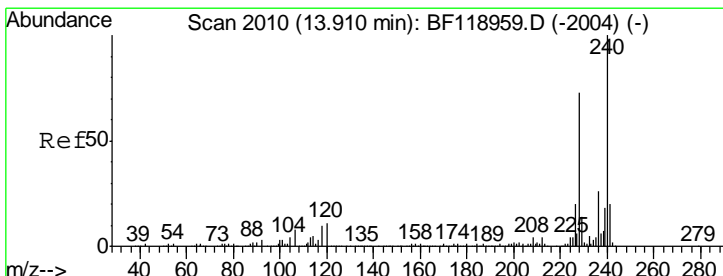
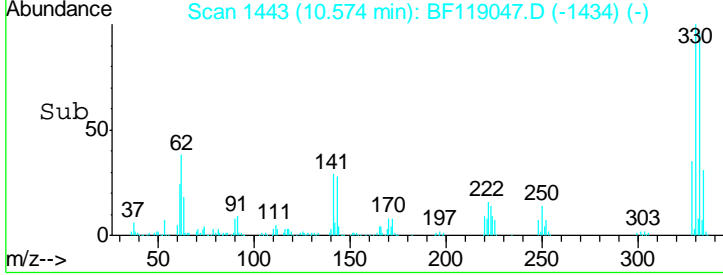
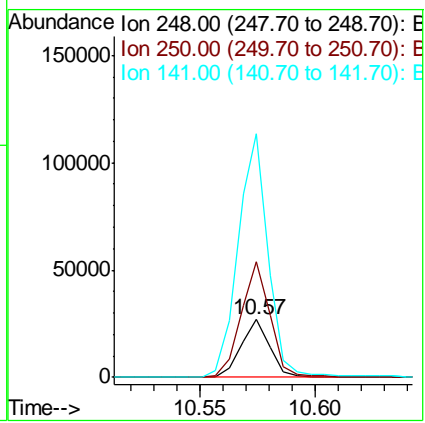
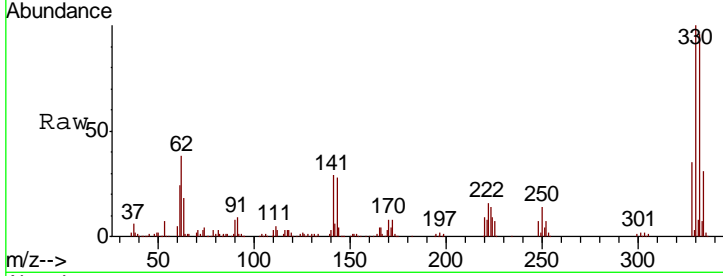




#67  
 4-Bromophenyl-phenylether  
 Concen: 3.259 ng  
 RT: 10.57 min Scan# 1443  
 Delta R.T. -0.25 min  
 Lab File: BF119047.D  
 Acq: 25 Feb 2020 3:50

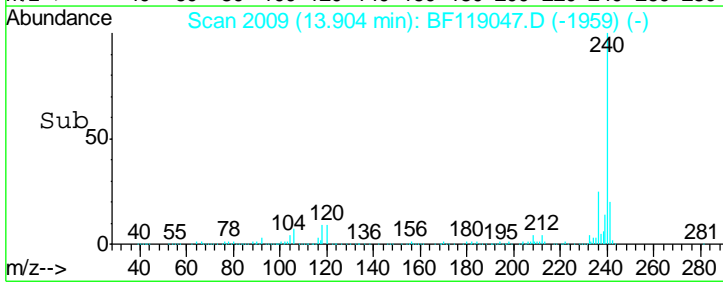
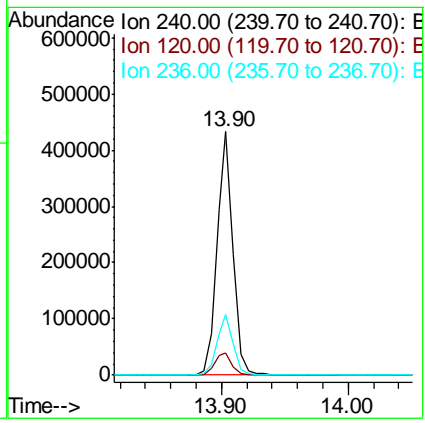
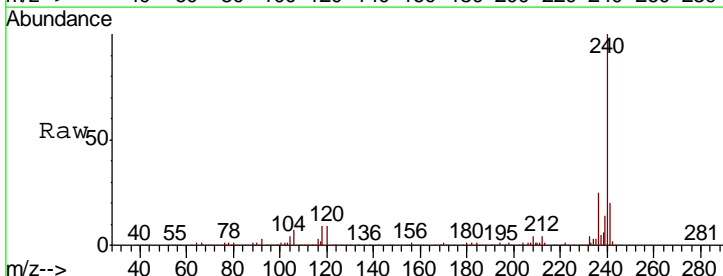
Instrument :  
 BNA\_F  
 ClientSampled :

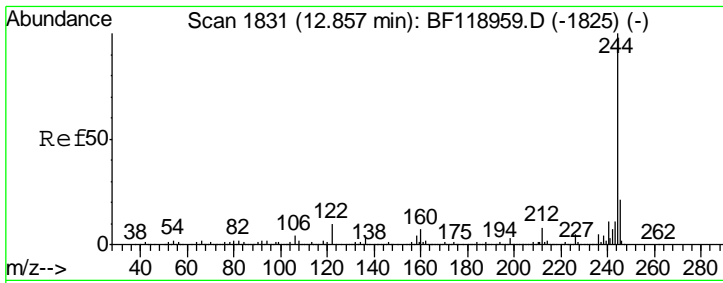
Tgt Ion	Resp	Lower	Upper
248	23261		
248	100		
250	200.4	78.8	118.2#
141	420.0	55.3	82.9#



#76  
 Chrysene-d12  
 Concen: 20.000 ng  
 RT: 13.90 min Scan# 2009  
 Delta R.T. -0.01 min  
 Lab File: BF119047.D  
 Acq: 25 Feb 2020 3:50

Tgt Ion	Resp	Lower	Upper
240	382243		
240	100		
120	9.2	8.9	13.3
236	25.0	20.6	30.8



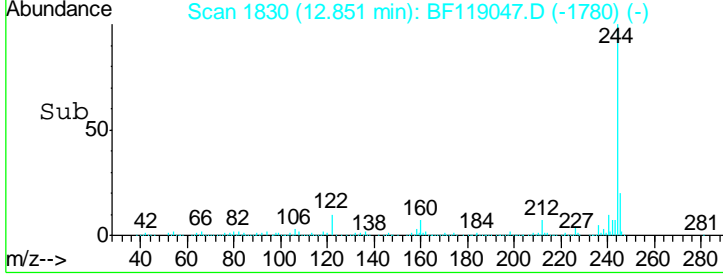
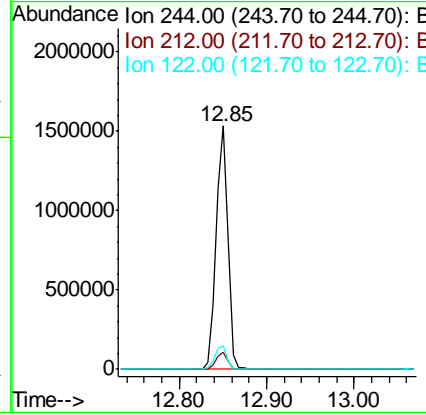
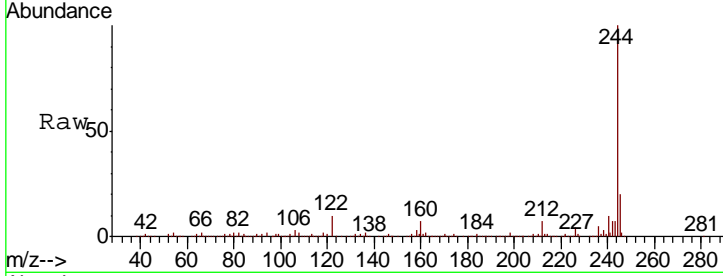


#79  
 Terphenyl-d14  
 Concen: 64.442 ng  
 RT: 12.85 min Scan# 1830  
 Delta R.T. -0.01 min  
 Lab File: BF119047.D  
 Acq: 25 Feb 2020 3:50

Instrument :  
 BNA\_F  
 ClientSampled :

Tgt Ion: 244 Resp: 1430725

Ion	Ratio	Lower	Upper
244	100		
212	7.1	6.3	9.5
122	9.5	8.4	12.6



#87  
 Perylene-d12  
 Concen: 20.000 ng  
 RT: 15.33 min Scan# 2252  
 Delta R.T. -0.00 min  
 Lab File: BF119047.D  
 Acq: 25 Feb 2020 3:50

Tgt Ion: 264 Resp: 360852

Ion	Ratio	Lower	Upper
264	100		
260	23.8	18.6	28.0
265	21.3	17.3	25.9

