

Data Path : Z:\svoasrv\HPCHEM1\BNA_F\Data\BF022625\
 Data File : BF141786.D
 Acq On : 26 Feb 2025 16:57
 Operator : RC/JU
 Sample : Q1422-02
 Misc :
 ALS Vial : 13 Sample Multiplier: 1

Instrument :
 BNA_F
 ClientSampleId :
 B-154-SB02

Integration Parameters: rteint.p
 Integrator: RTE
 Smoothing : ON Filtering: 5
 Sampling : 1 Min Area: 3 % of largest Peak
 Start Thrs: 0.2 Max Peaks: 100
 Stop Thrs : 0 Peak Location: TOP

If leading or trailing edge < 100 prefer < Baseline drop else tangent >
 Peak separation: 5

Method : Z:\svoasrv\HPCHEM1\BNA_F\Methods\8270-BF020625.M
 Title : ASP BNA STANDARDS FOR 5 POINT CALIBRATION

Signal : TIC: BF141786.D\data.ms

peak #	R.T. min	first scan	max scan	last scan	PK TY	peak height	corr. area	corr. % max.	% of total
1	5.404	558	563	588	rBV	510517	849082	65.75%	9.474%
2	6.422	731	736	765	rBV	545561	912209	70.63%	10.178%
3	6.781	792	797	806	rBV	333841	430682	33.35%	4.806%
4	7.345	887	893	921	rBV	344701	540131	41.82%	6.027%
5	7.651	937	945	956	rBV2	6878	17429	1.35%	0.194%
6	8.063	1010	1015	1040	rBV	382170	581353	45.02%	6.487%
7	9.133	1192	1197	1209	rBV	766964	1064355	82.42%	11.876%
8	9.816	1308	1313	1332	rBV	472240	680565	52.70%	7.594%
9	10.527	1429	1434	1442	rBV	52920	75188	5.82%	0.839%
10	10.604	1442	1447	1473	rVB	407843	622121	48.17%	6.942%
11	11.298	1560	1565	1585	rBV	466828	687180	53.21%	7.668%
12	11.833	1650	1656	1667	rBV2	20203	48980	3.79%	0.547%
13	12.880	1829	1834	1849	rBV	996616	1291451	100.00%	14.410%
14	13.786	1982	1988	2004	rBV3	22013	71666	5.55%	0.800%
15	13.939	2009	2014	2027	rVB	417574	600517	46.50%	6.701%
16	15.386	2254	2260	2273	rBV	272611	489248	37.88%	5.459%

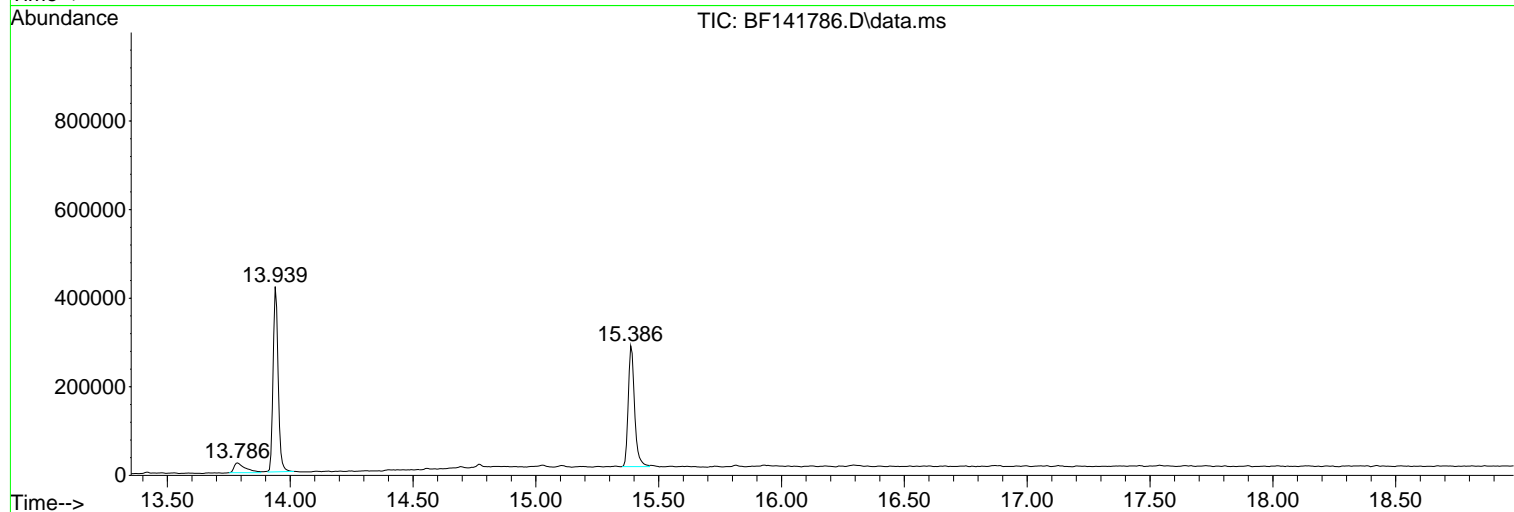
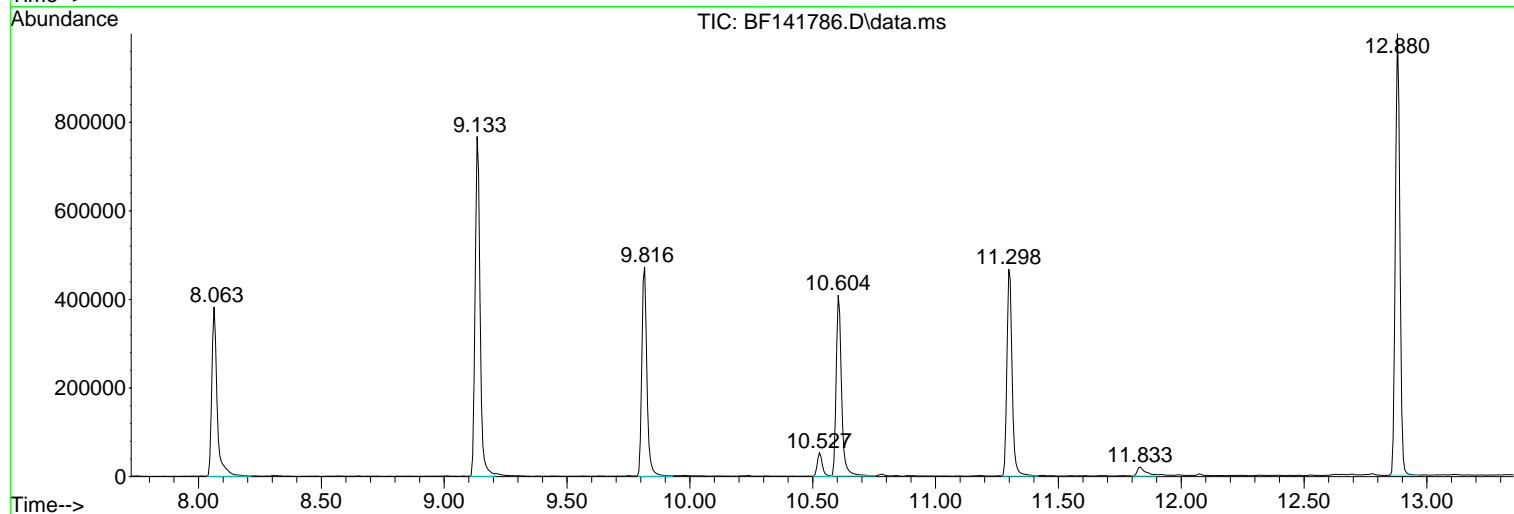
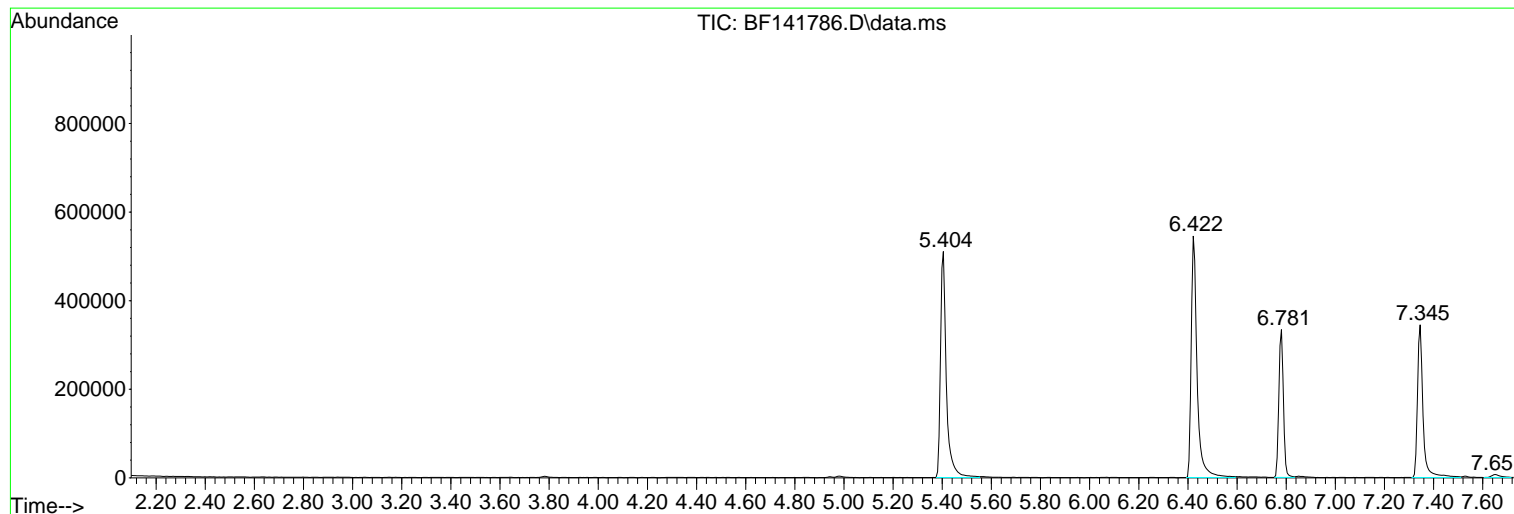
Sum of corrected areas: 8962157

Data Path : Z:\svoasrv\HPCHEM1\BNA_F\Data\BF022625\
Data File : BF141786.D
Acq On : 26 Feb 2025 16:57
Operator : RC/JU
Sample : Q1422-02
Misc :
ALS Vial : 13 Sample Multiplier: 1

Instrument :
BNA_F
ClientSampleId :
B-154-SB02

Quant Method : Z:\svoasrv\HPCHEM1\BNA_F\Methods\8270-BF020625.M
Quant Title : ASP BNA STANDARDS FOR 5 POINT CALIBRATION

TIC Library : C:\Database\NIST20.L
TIC Integration Parameters: LSCINT.P



Data Path : Z:\svoasrv\HPCHEM1\BNA_F\Data\BF022625\
 Data File : BF141786.D
 Acq On : 26 Feb 2025 16:57
 Operator : RC/JU
 Sample : Q1422-02
 Misc :
 ALS Vial : 13 Sample Multiplier: 1

Instrument :
 BNA_F
 ClientSampleId :
 B-154-SB02

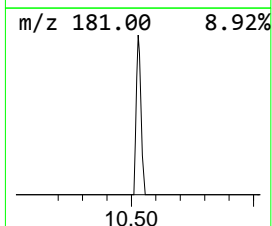
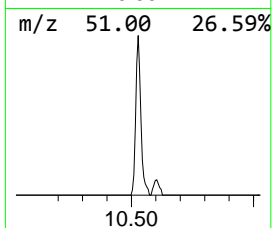
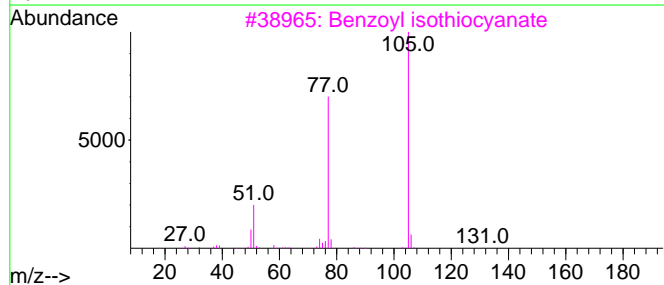
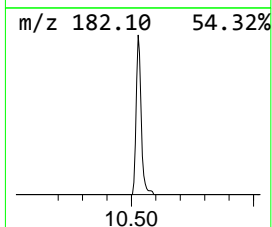
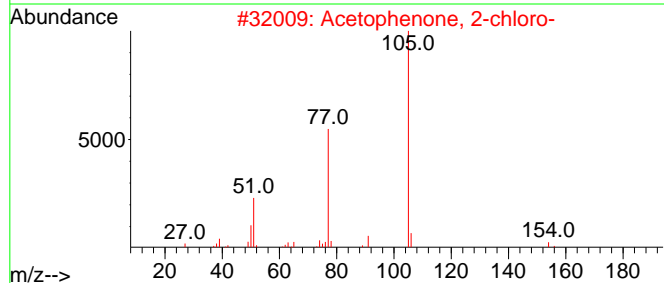
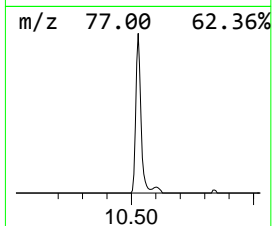
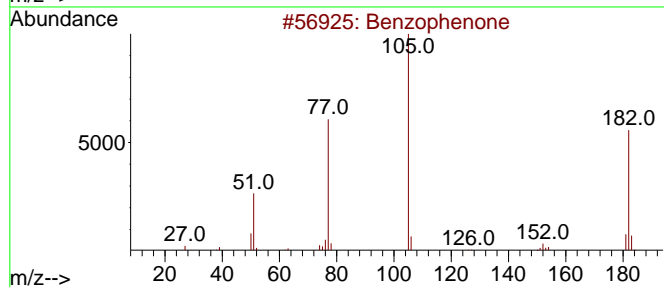
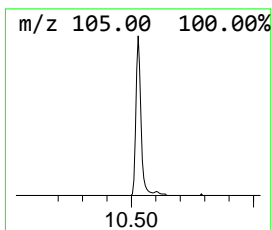
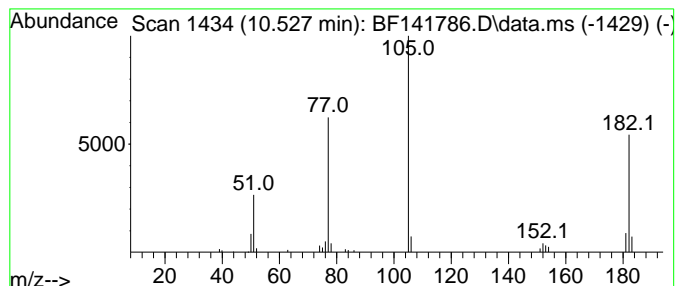
Quant Method : Z:\svoasrv\HPCHEM1\BNA_F\Methods\8270-BF020625.M
 Quant Title : ASP BNA STANDARDS FOR 5 POINT CALIBRATION

TIC Library : C:\Database\NIST20.L
 TIC Integration Parameters: LSCINT.P

 Peak Number 1 Benzophenone Concentration Rank 2

R.T.	EstConc	Area	Relative to ISTD	R.T.
10.527	2.21 ng	75188	Acenaphthene-d10	9.816

Hit#	of	5	Tentative ID	MW	MolForm	CAS#	Qual
1			Benzophenone	182	C13H10O	000119-61-9	96
2			Acetophenone, 2-chloro-	154	C8H7ClO	000532-27-4	49
3			Benzoyl isothiocyanate	163	C8H5NOS	000532-55-8	47
4			Benzenepropanenitrile, .beta.-oxo-	145	C9H7NO	000614-16-4	47
5			1-Propanone, 3-chloro-1-phenyl-	168	C9H9ClO	000936-59-4	47



Data Path : Z:\svoasrv\HPCHEM1\BNA_F\Data\BF022625\
 Data File : BF141786.D
 Acq On : 26 Feb 2025 16:57
 Operator : RC/JU
 Sample : Q1422-02
 Misc :
 ALS Vial : 13 Sample Multiplier: 1

Instrument :
 BNA_F
 ClientSampleId :
 B-154-SB02

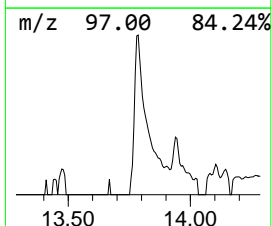
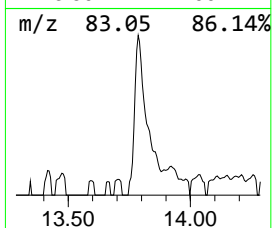
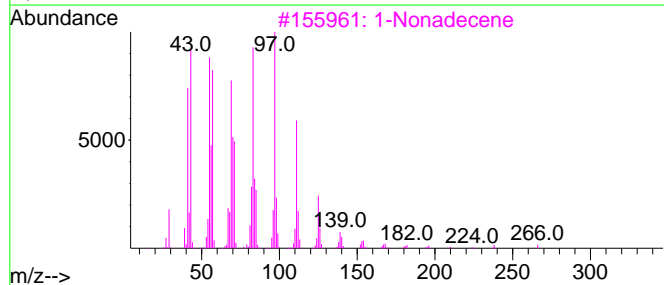
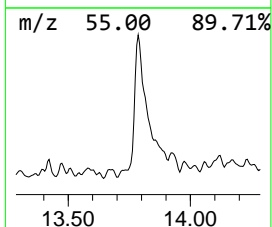
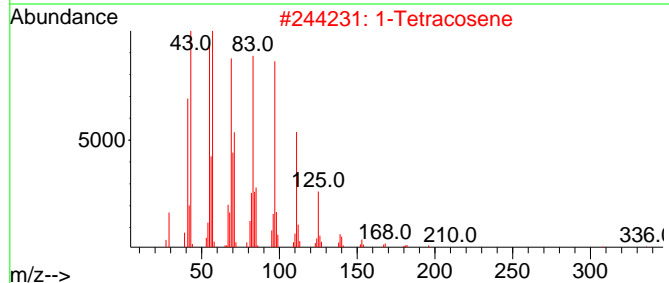
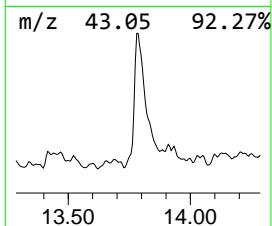
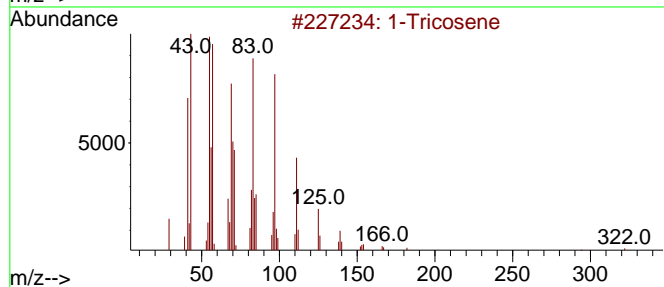
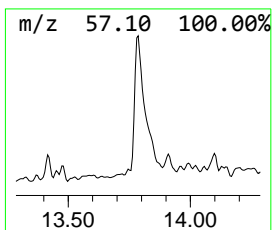
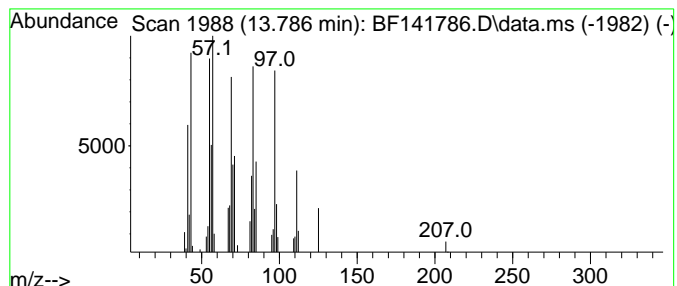
Quant Method : Z:\svoasrv\HPCHEM1\BNA_F\Methods\8270-BF020625.M
 Quant Title : ASP BNA STANDARDS FOR 5 POINT CALIBRATION

TIC Library : C:\Database\NIST20.L
 TIC Integration Parameters: LSCINT.P

 Peak Number 2 1-Tricosene Concentration Rank 1

R.T.	EstConc	Area	Relative to ISTD	R.T.
13.786	2.39 ng	71666	Chrysene-d12	13.939

Hit#	of 5	Tentative ID	MW	MolForm	CAS#	Qual
1		1-Tricosene	322	C23H46	018835-32-0	90
2		1-Tetracosene	336	C24H48	010192-32-2	90
3		1-Nonadecene	266	C19H38	018435-45-5	87
4		1-Hexacosene	364	C26H52	018835-33-1	87
5		Trifluoroacetoxy hexadecane	338	C18H33F3O2	006222-03-3	83



Data Path : Z:\svoasrv\HPCHEM1\BNA_F\Data\BF022625\
Data File : BF141786.D
Acq On : 26 Feb 2025 16:57
Operator : RC/JU
Sample : Q1422-02
Misc :
ALS Vial : 13 Sample Multiplier: 1

Instrument :
BNA_F
ClientSampleId :
B-154-SB02

Quant Method : Z:\svoasrv\HPCHEM1\BNA_F\Methods\8270-BF020625.M
Quant Title : ASP BNA STANDARDS FOR 5 POINT CALIBRATION

TIC Library : C:\Database\NIST20.L
TIC Integration Parameters: LSCINT.P

TIC Top Hit name	RT	EstConc	Units	Response	--Internal Standard--			
					#	RT	Resp	Conc
Benzophenone	10.527	2.2	ng	75188	3	9.816	680565	20.0
1-Tricosene	13.786	2.4	ng	71666	5	13.939	600517	20.0