

Data Path : Z:\SVOASRV\HPCHEM1\BNA F\DATA\BF022820\  
 Data File : BF119142.D  
 Acq On : 28 Feb 2020 20:53  
 Operator : CG/JU  
 Sample : L1373-04  
 Misc :  
 ALS Vial : 14 Sample Multiplier: 1

Instrument :  
 BNA\_F  
 ClientSampleId :  
 TR-06-022720

Quant Time: Mar 02 03:19:40 2020  
 Quant Method : Z:\SVOASRV\HPCHEM1\BNA F\METHODS\8270-BF022020.M  
 Quant Title : ASP BNA STANDARDS FOR 5 POINT CALIBRATION  
 QLast Update : Wed Feb 26 16:03:05 2020  
 Response via : Initial Calibration

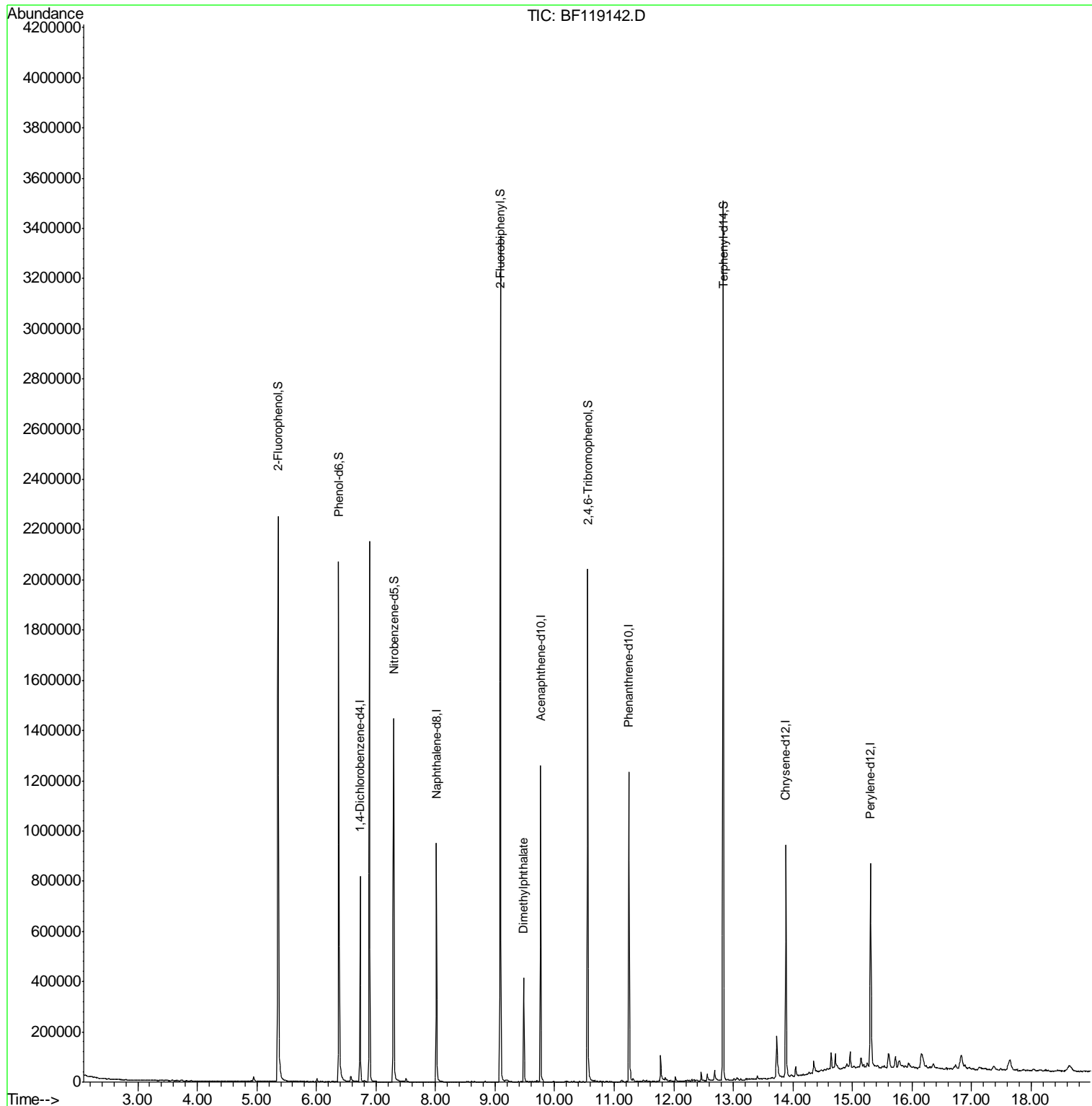
Internal Standards	R.T.	QIon	Response	Conc	Units	Dev(Min)
1) 1,4-Dichlorobenzene-d4	6.73	152	121899	20.00	ng	-0.01
21) Naphthalene-d8	8.02	136	470049	20.00	ng	-0.02
39) Acenaphthene-d10	9.76	164	251120	20.00	ng	-0.02
64) Phenanthrene-d10	11.25	188	454856	20.00	ng	-0.02
76) Chrysene-d12	13.88	240	305179	20.00	ng	-0.02
87) Perylene-d12	15.30	264	363678	20.00	ng	-0.02
System Monitoring Compounds						
5) 2-Fluorophenol	5.36	112	676632	92.76	ng	-0.01
7) Phenol-d6	6.38	99	826843	93.21	ng	-0.02
23) Nitrobenzene-d5	7.30	82	536948	60.31	ng	-0.02
42) 2,4,6-Tribromophenol	10.56	330	285423	86.88	ng	-0.02
45) 2-Fluorobiphenyl	9.09	172	1100527	64.56	ng	-0.02
79) Terphenyl-d14	12.83	244	1259620	71.06	ng	-0.02
Target Compounds						
50) Dimethylphthalate	9.48	163	171125	8.912	ng	99

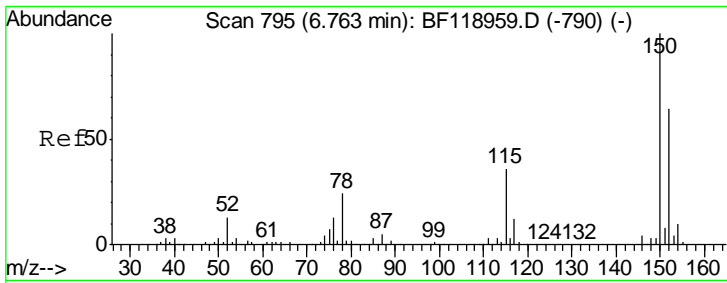
(#) = qualifier out of range (m) = manual integration (+) = signals summed

Data Path : Z:\SVOASRV\HPCHEM1\BNA F\DATA\BF022820\  
 Data File : BF119142.D  
 Acq On : 28 Feb 2020 20:53  
 Operator : CG/JU  
 Sample : L1373-04  
 Misc :  
 ALS Vial : 14 Sample Multiplier: 1

Instrument :  
 BNA\_F  
 ClientSampleId :  
 TR-06-022720

Quant Time: Mar 02 03:19:40 2020  
 Quant Method : Z:\SVOASRV\HPCHEM1\BNA F\METHODS\8270-BF022020.M  
 Quant Title : ASP BNA STANDARDS FOR 5 POINT CALIBRATION  
 QLast Update : Wed Feb 26 16:03:05 2020  
 Response via : Initial Calibration

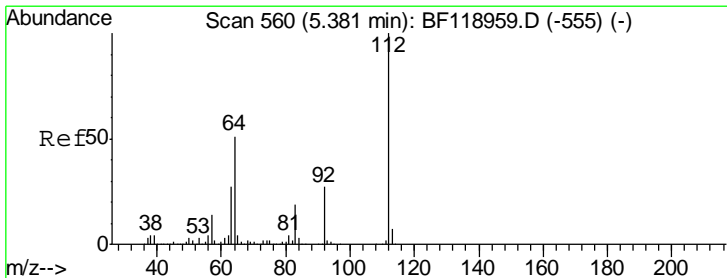
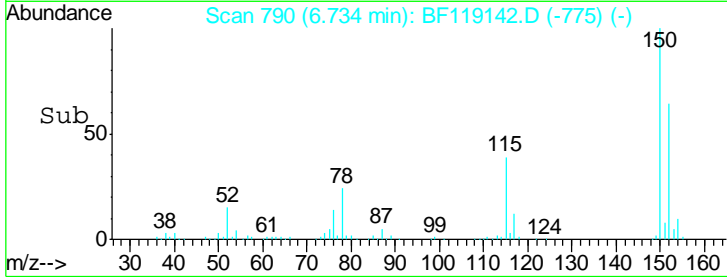
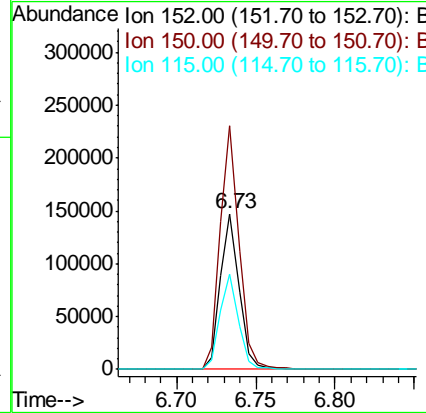
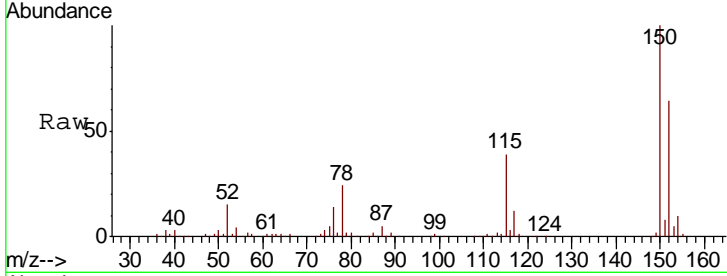




#1  
 1,4-Dichlorobenzene-d4  
 Concen: 20.000 ng  
 RT: 6.73 min Scan# 790  
 Delta R.T. -0.01 min  
 Lab File: BF119142.D  
 Acq: 28 Feb 2020 20:53

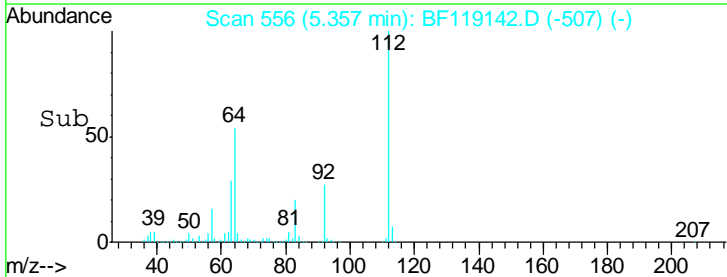
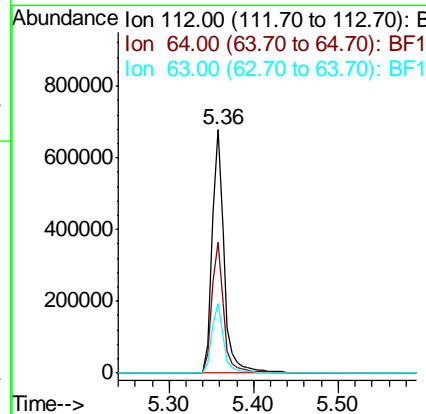
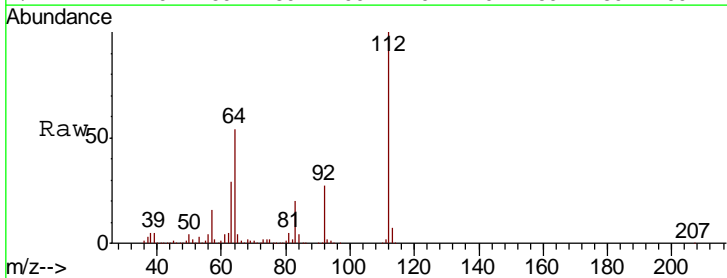
Instrument :  
 BNA\_F  
 ClientSampleId :  
 TR-06-022720

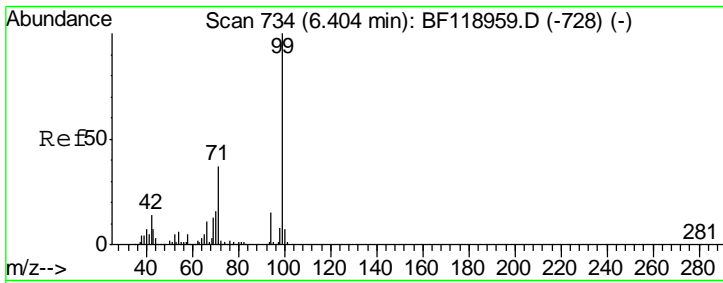
Tgt Ion	Resp	Lower	Upper
152	121899		
150	156.2	123.0	184.6
115	60.8	49.5	74.3



#5  
 2-Fluorophenol  
 Concen: 92.763 ng  
 RT: 5.36 min Scan# 556  
 Delta R.T. -0.01 min  
 Lab File: BF119142.D  
 Acq: 28 Feb 2020 20:53

Tgt Ion	Resp	Lower	Upper
112	676632		
64	53.9	45.0	67.4
63	28.8	24.2	36.4

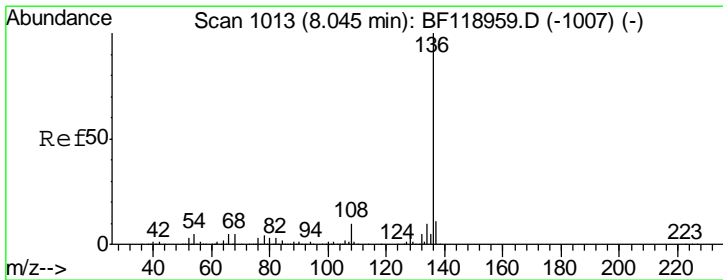
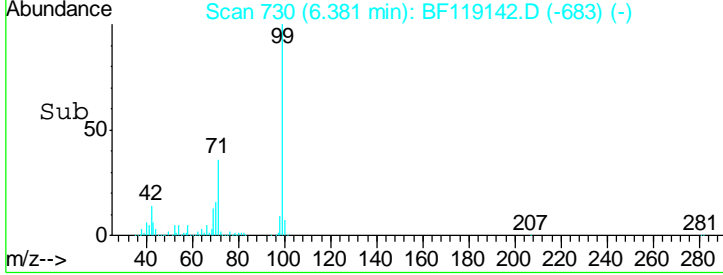
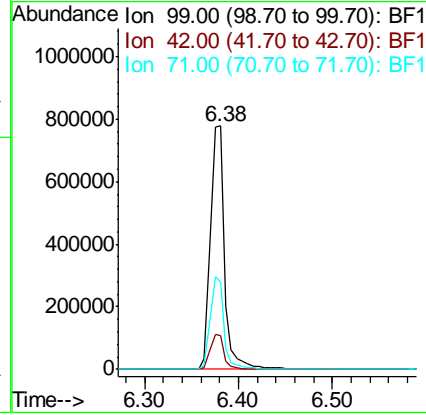
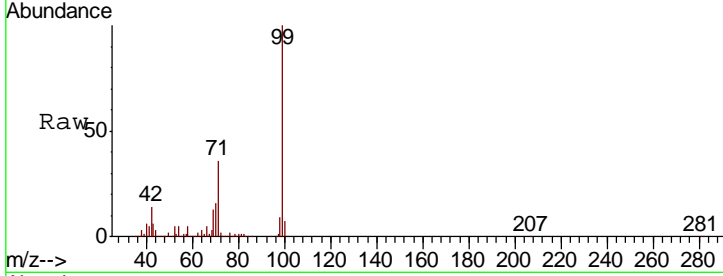




#7  
 Phenol-d6  
 Concen: 93.206 ng  
 RT: 6.38 min Scan# 730  
 Delta R.T. -0.02 min  
 Lab File: BF119142.D  
 Acq: 28 Feb 2020 20:53

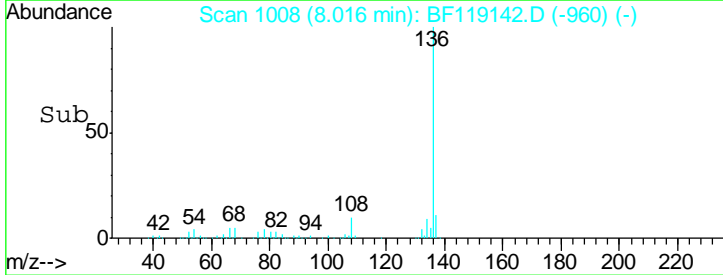
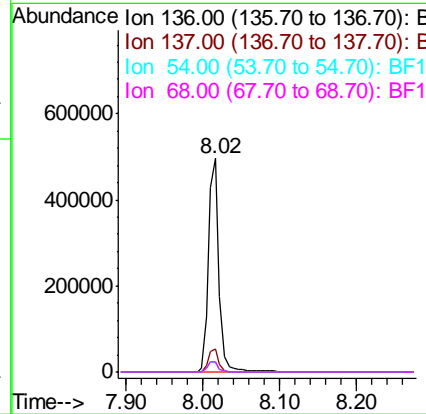
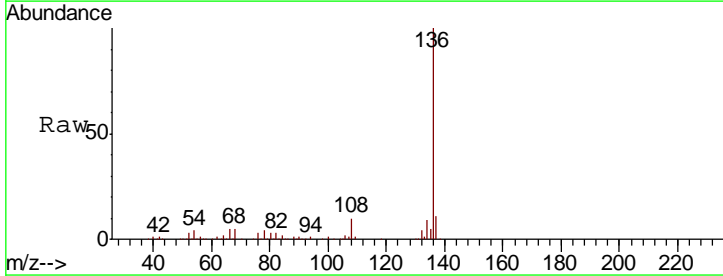
Instrument :  
 BNA\_F  
 ClientSampled :  
 TR-06-022720

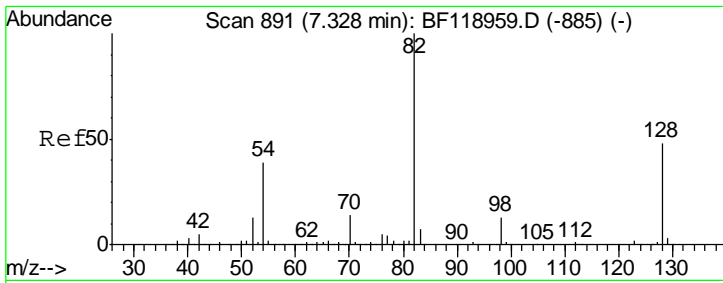
Tgt Ion	Resp	Lower	Upper
99	826843		
42	13.6	12.6	18.8
71	36.2	31.0	46.4



#21  
 Naphthalene-d8  
 Concen: 20.000 ng  
 RT: 8.02 min Scan# 1008  
 Delta R.T. -0.02 min  
 Lab File: BF119142.D  
 Acq: 28 Feb 2020 20:53

Tgt Ion	Resp	Lower	Upper
136	470049		
137	10.7	8.8	13.2
54	4.4	3.8	5.6
68	4.8	3.9	5.9

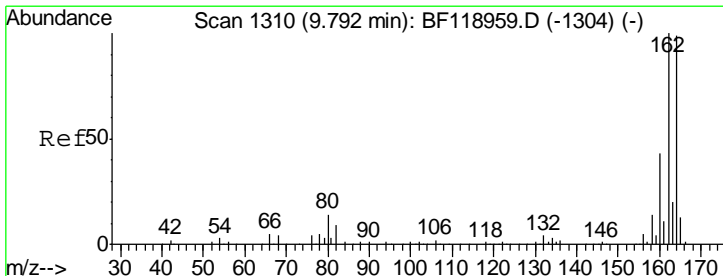
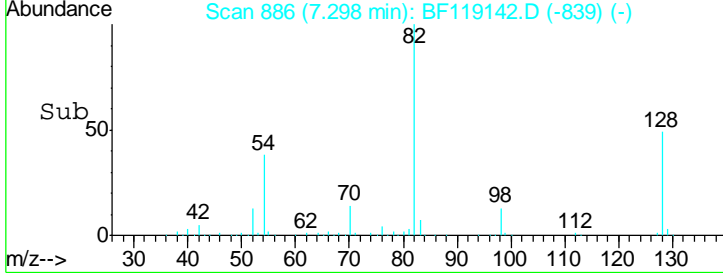
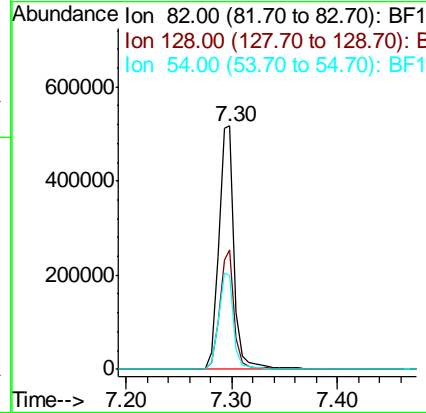
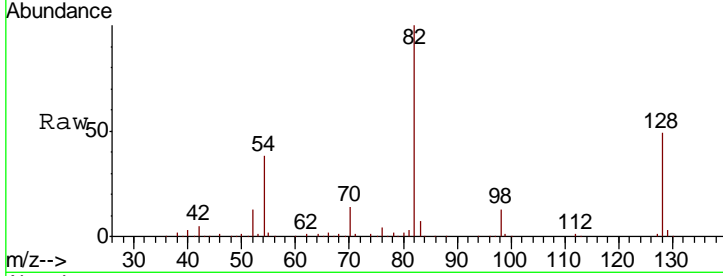




#23  
 Nitrobenzene-d5  
 Concen: 60.315 ng  
 RT: 7.30 min Scan# 886  
 Delta R.T. -0.02 min  
 Lab File: BF119142.D  
 Acq: 28 Feb 2020 20:53

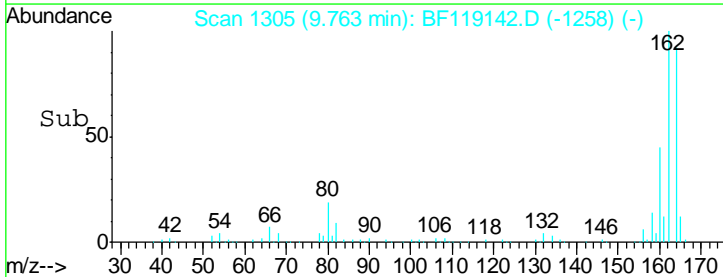
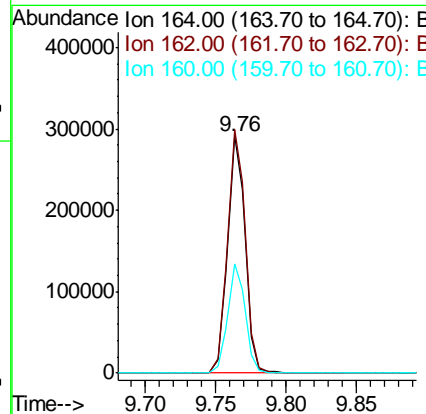
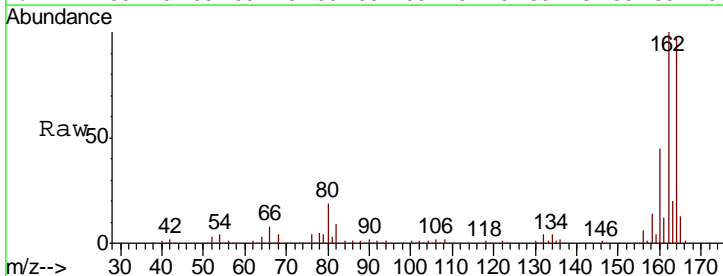
**Instrument :**  
 BNA\_F  
**ClientSampled :**  
 TR-06-022720

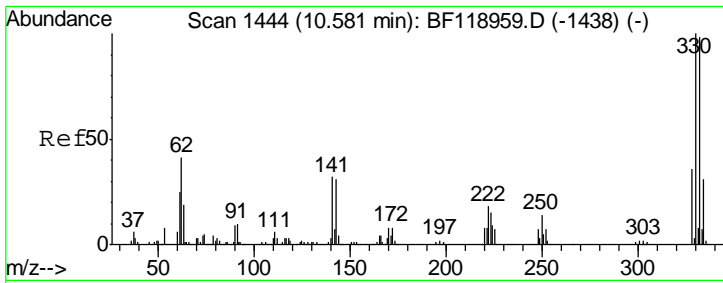
Tgt Ion	Resp	Lower	Upper
82	536948		
128	49.1	37.9	56.9
54	38.3	33.4	50.2



#39  
 Acenaphthene-d10  
 Concen: 20.000 ng  
 RT: 9.76 min Scan# 1305  
 Delta R.T. -0.02 min  
 Lab File: BF119142.D  
 Acq: 28 Feb 2020 20:53

Tgt Ion	Resp	Lower	Upper
164	251120		
162	102.8	81.8	122.8
160	46.1	36.0	54.0

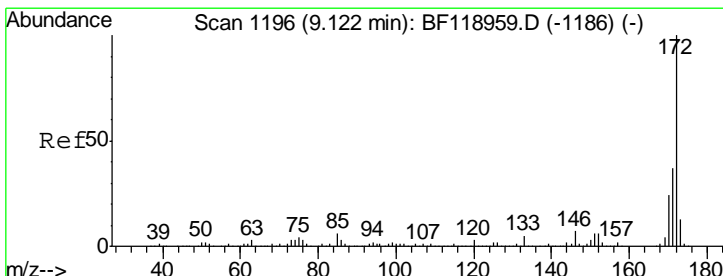
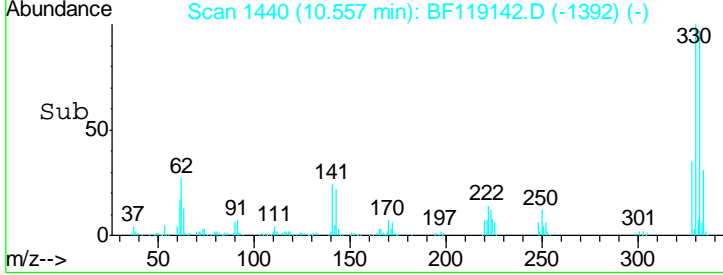
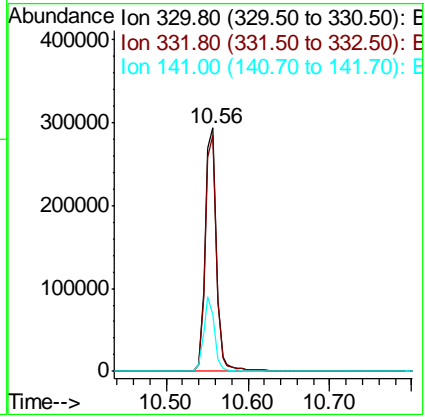
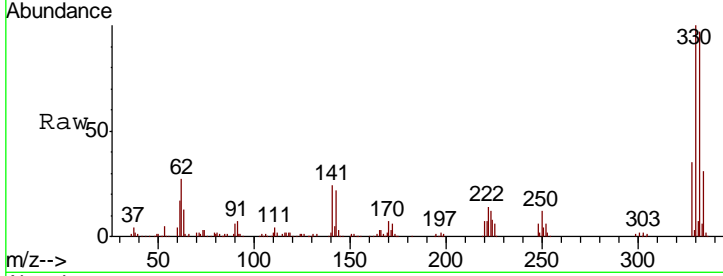




#42  
 2,4,6-Tribromophenol  
 Concen: 86.885 ng  
 RT: 10.56 min Scan# 1440  
 Delta R.T. -0.02 min  
 Lab File: BF119142.D  
 Acq: 28 Feb 2020 20:53

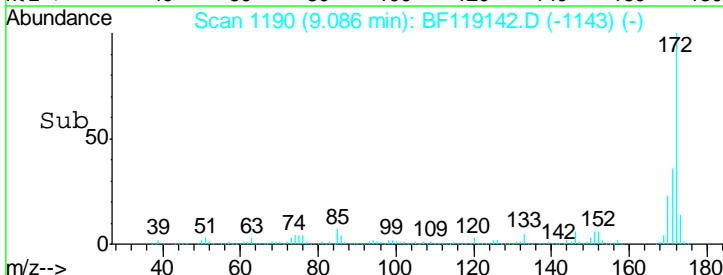
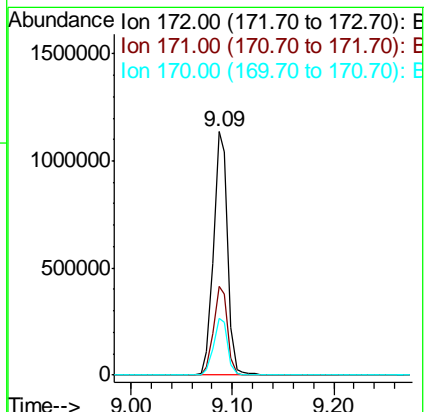
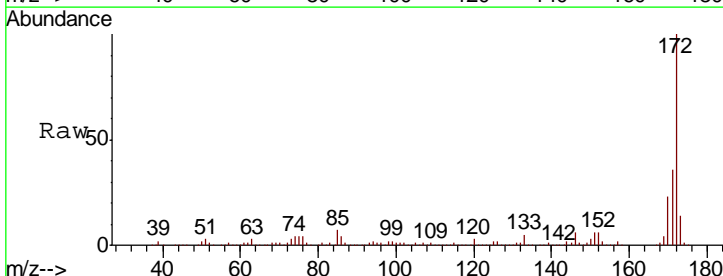
Instrument :  
 BNA\_F  
 ClientSampled :  
 TR-06-022720

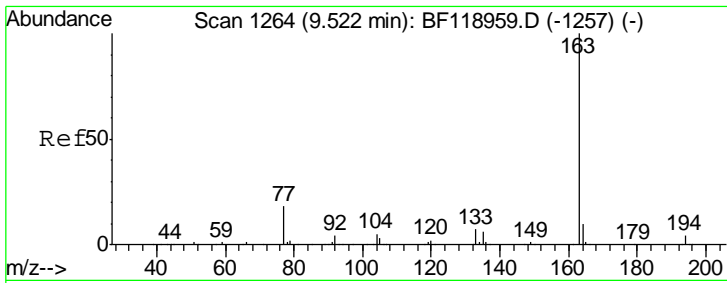
Tgt Ion	Resp	Lower	Upper
330	100		
332	95.9	76.0	114.0
141	29.7	22.9	34.3



#45  
 2-Fluorobiphenyl  
 Concen: 64.561 ng  
 RT: 9.09 min Scan# 1190  
 Delta R.T. -0.02 min  
 Lab File: BF119142.D  
 Acq: 28 Feb 2020 20:53

Tgt Ion	Resp	Lower	Upper
172	100		
171	36.5	30.6	45.8
170	23.5	20.2	30.2



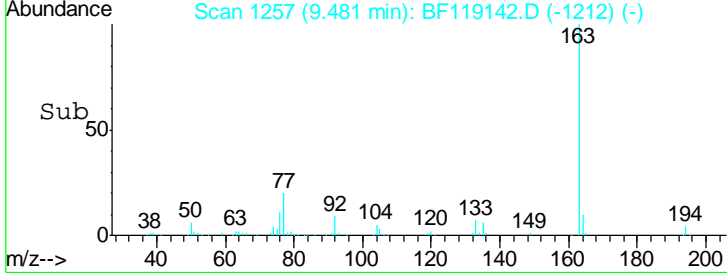
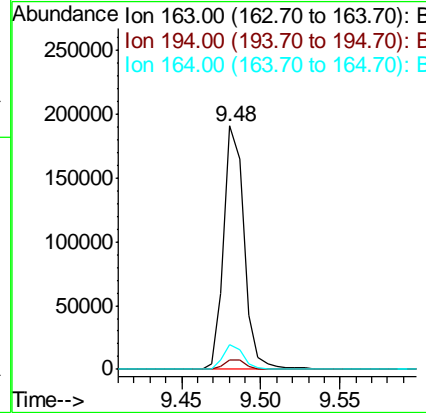
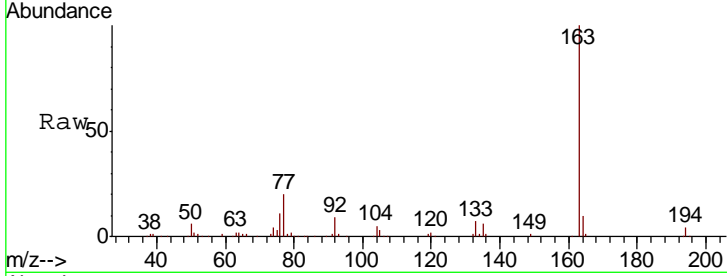


#50  
 Dimethylphthalate  
 Concen: 8.912 ng  
 RT: 9.48 min Scan# 1257  
 Delta R.T. -0.04 min  
 Lab File: BF119142.D  
 Acq: 28 Feb 2020 20:53

**Instrument :**  
 BNA\_F  
**ClientSampled :**  
 TR-06-022720

Tgt Ion: 163 Resp: 171125

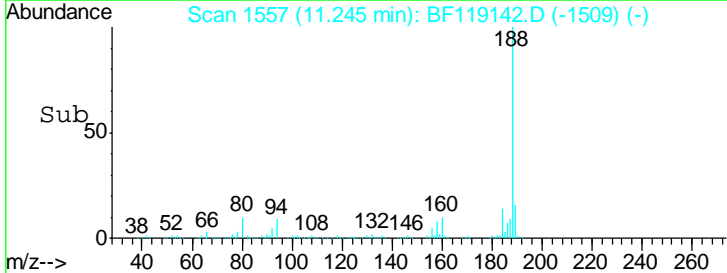
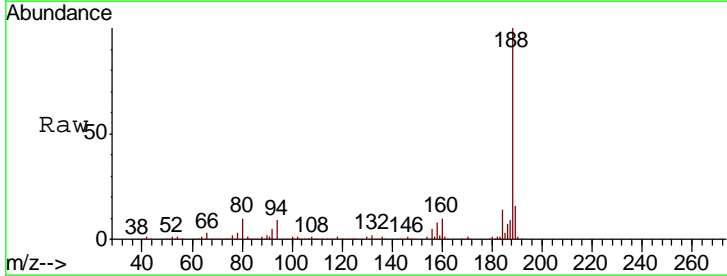
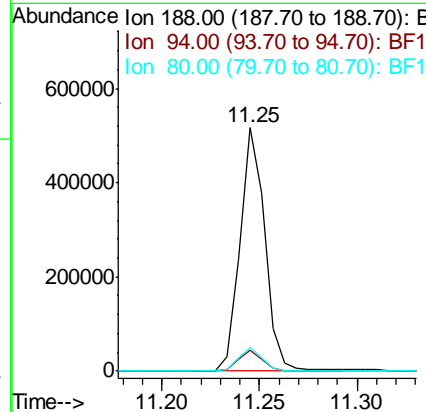
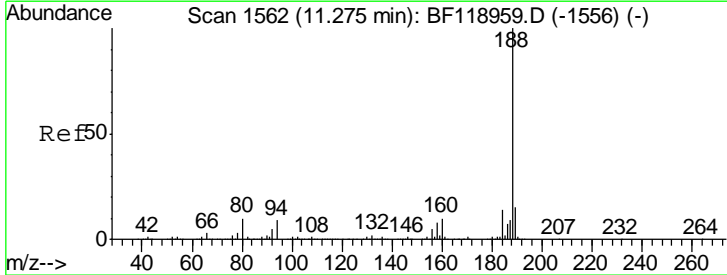
Ion	Ratio	Lower	Upper
163	100		
194	4.0	3.5	5.3
164	10.2	8.4	12.6

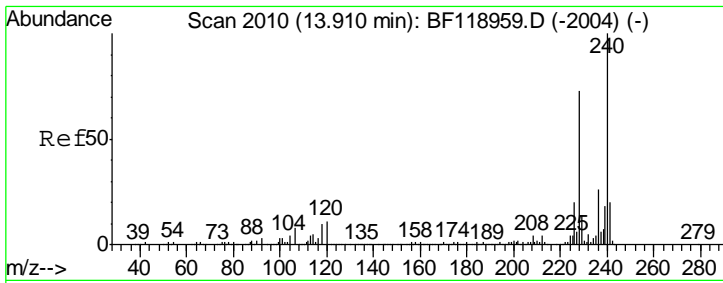


#64  
 Phenanthrene-d10  
 Concen: 20.000 ng  
 RT: 11.25 min Scan# 1557  
 Delta R.T. -0.02 min  
 Lab File: BF119142.D  
 Acq: 28 Feb 2020 20:53

Tgt Ion: 188 Resp: 454856

Ion	Ratio	Lower	Upper
188	100		
94	8.5	7.1	10.7
80	9.7	7.8	11.8

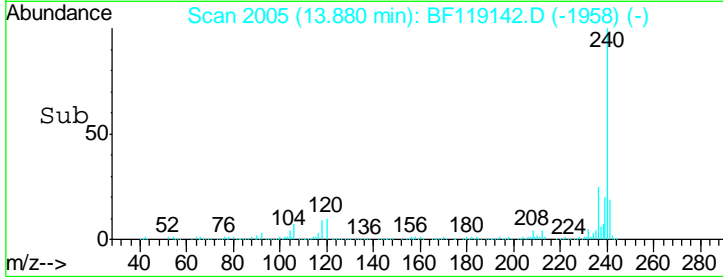
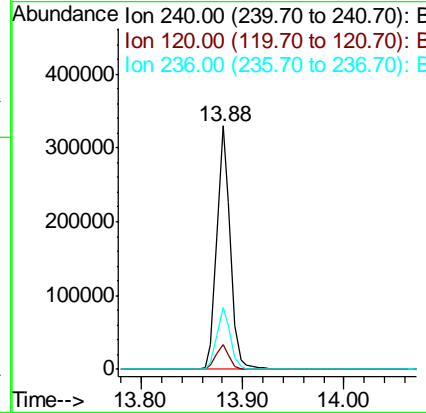
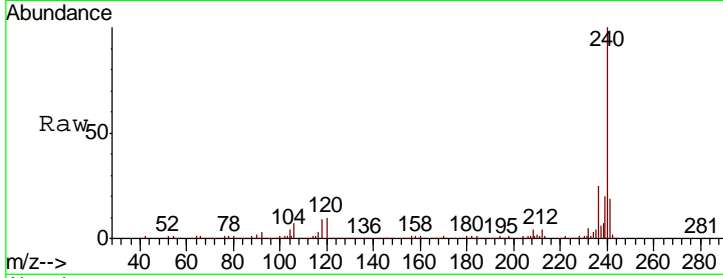




#76  
 Chrysene-d12  
 Concen: 20.000 ng  
 RT: 13.88 min Scan# 2005  
 Delta R.T. -0.02 min  
 Lab File: BF119142.D  
 Acq: 28 Feb 2020 20:53

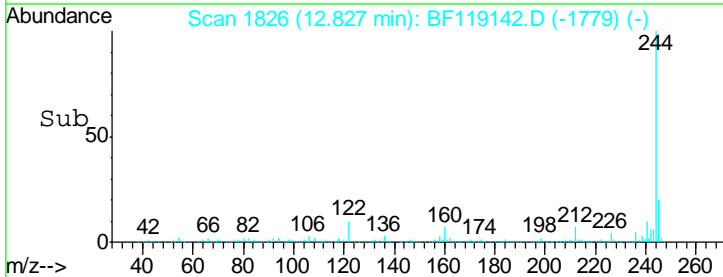
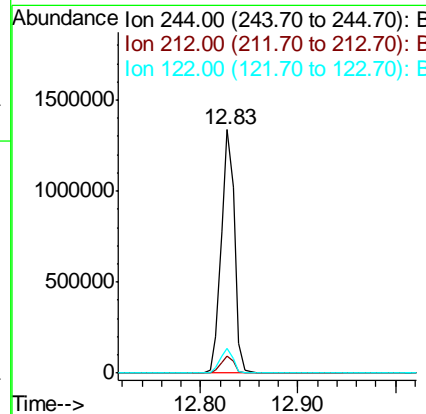
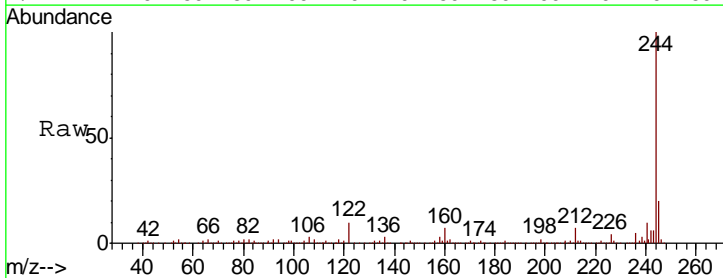
Instrument :  
 BNA\_F  
 ClientSampled :  
 TR-06-022720

Tgt Ion	Resp	Lower	Upper
240	100		
120	10.0	8.4	12.6
236	25.3	21.0	31.4

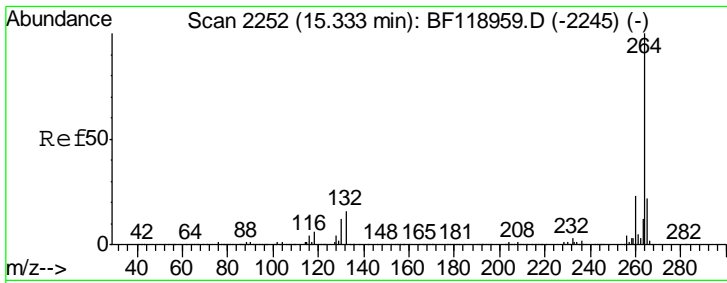


#79  
 Terphenyl-d14  
 Concen: 71.062 ng  
 RT: 12.83 min Scan# 1826  
 Delta R.T. -0.02 min  
 Lab File: BF119142.D  
 Acq: 28 Feb 2020 20:53

Tgt Ion	Resp	Lower	Upper
244	100		
212	7.1	6.6	10.0
122	10.4	8.2	12.2







#87  
 Perylene-d12  
 Concen: 20.000 ng  
 RT: 15.30 min Scan# 2247  
 Delta R.T. -0.02 min  
 Lab File: BF119142.D  
 Acq: 28 Feb 2020 20:53

Instrument :  
 BNA\_F  
 ClientSampleId :  
 TR-06-022720

Tot Ion: 264 Resp: 363678

Ion	Ratio	Lower	Upper
264	100		
260	23.7	19.4	29.2
265	21.3	17.7	26.5

