

Data Path : Z:\HPCHEM1\BNA F\DATA\BF030117\  
 Data File : BF093299.D  
 Acq On : 1 Mar 2017 19:47  
 Operator : SJ/MA  
 Sample : I2002-06  
 Misc :  
 ALS Vial : 13 Sample Multiplier: 1

Instrument :  
 BNA\_F  
 ClientSampleId :  
 SSP-7(5.5-7.5)

Integration Parameters: rteint.p  
 Integrator: RTE  
 Smoothing : ON  
 Sampling : 1  
 Start Thrs: 0.2  
 Stop Thrs : 0

Filtering: 5  
 Min Area: 3 % of largest Peak  
 Max Peaks: 100  
 Peak Location: TOP

If leading or trailing edge < 100 prefer < Baseline drop else tangent >  
 Peak separation: 5

Method : Z:\HPCHEM1\BNA F\METHODS\8270-BF013017.M  
 Title : ASP BNA STANDARDS FOR 5 POINT CALIBRATION

Signal : TIC

peak #	R.T. min	first scan	max scan	last scan	PK TY	peak height	corr. area	corr. % max.	% of total
1	4.956	247	251	260	rBV	933532	1232570	31.10%	1.235%
2	5.401	288	290	299	rVV	3003865	3048849	76.92%	3.055%
3	5.790	320	324	326	rBV2	76073	126339	3.19%	0.127%
4	5.927	334	336	339	rVB2	122097	169236	4.27%	0.170%
5	6.030	343	345	348	rVB	330718	362619	9.15%	0.363%
6	6.224	359	362	363	rBV	149419	182072	4.59%	0.182%
7	6.316	369	370	372	rBV	157714	156683	3.95%	0.157%
8	6.453	380	382	387	rBV	3001456	3322512	83.83%	3.330%
9	6.533	387	389	391	rBV	179982	291944	7.37%	0.293%
10	6.579	391	393	395	rVB	2562174	3017082	76.12%	3.024%
11	6.647	395	399	401	rVB4	100125	221855	5.60%	0.222%
12	6.739	404	407	410	rBV4	133025	292655	7.38%	0.293%
13	6.807	410	413	416	rVB2	950503	1437527	36.27%	1.441%
14	6.864	416	418	419	rBV	153253	198016	5.00%	0.198%
15	6.899	419	421	422	rBV2	79924	138245	3.49%	0.139%
16	6.956	424	426	430	rVB2	2054417	2755941	69.53%	2.762%
17	7.036	430	433	434	rBV	148079	213598	5.39%	0.214%
18	7.070	434	436	438	rVB3	236542	376148	9.49%	0.377%
19	7.116	438	440	442	rBV3	76380	105459	2.66%	0.106%
20	7.196	445	447	449	rBV2	423558	439473	11.09%	0.440%
21	7.230	449	450	453	rVB3	104451	117424	2.96%	0.118%
22	7.344	456	460	461	rBV2	628648	890237	22.46%	0.892%
23	7.379	461	463	467	rVB	2059920	2399122	60.53%	2.404%
24	7.447	467	469	471	rVB2	391354	656008	16.55%	0.657%
25	7.516	471	475	477	rBV2	358506	794094	20.03%	0.796%
26	7.584	477	481	485	rVB4	437168	1233653	31.12%	1.236%
27	7.642	485	486	487	rBV	115012	110045	2.78%	0.110%
28	7.710	488	492	496	rBV6	549129	1483822	37.44%	1.487%
29	7.767	496	497	499	rVB2	425197	509225	12.85%	0.510%
30	7.836	499	503	506	rBV4	420121	589377	14.87%	0.591%
31	7.916	506	510	512	rVB3	311808	645785	16.29%	0.647%
32	7.962	512	514	516	rBV2	303768	481810	12.16%	0.483%
33	8.042	518	521	522	rBV2	339639	686945	17.33%	0.688%
34	8.087	522	525	527	rVV	974358	1554603	39.22%	1.558%

Data Path : Z:\HPCHEM1\BNA F\DATA\BF030117\  
 Data File : BF093299.D  
 Acq On : 1 Mar 2017 19:47  
 Operator : SJ/MA  
 Sample : I2002-06  
 Misc :  
 ALS Vial : 13 Sample Multiplier: 1

Instrument :  
 BNA\_F  
 ClientSampleId :  
 SSP-7(5.5-7.5)

Integration Parameters: rteint.p  
 Integrator: RTE  
 Smoothing : ON  
 Sampling : 1  
 Start Thrs: 0.2  
 Stop Thrs : 0

Filtering: 5  
 Min Area: 3 % of largest Peak  
 Max Peaks: 100  
 Peak Location: TOP

If leading or trailing edge < 100 prefer < Baseline drop else tangent >  
 Peak separation: 5

Method : Z:\HPCHEM1\BNA F\METHODS\8270-BF013017.M  
 Title : ASP BNA STANDARDS FOR 5 POINT CALIBRATION

35	8.156	527	531	532	rVV	1820973	1781443	44.95%	1.785%
36	8.179	532	533	535	rVB2	259206	283856	7.16%	0.284%
37	8.247	537	539	541	rBV3	317764	532530	13.44%	0.534%
38	8.293	541	543	545	rBV	425205	308578	7.79%	0.309%
39	8.385	547	551	554	rBV3	1121207	2170400	54.76%	2.175%
40	8.442	554	556	557	rVB	390792	356798	9.00%	0.358%
41	8.476	557	559	560	rVB	391462	369471	9.32%	0.370%
42	8.522	560	563	565	rBV	2685467	3640824	91.86%	3.649%
43	8.602	568	570	571	rVB	276485	335317	8.46%	0.336%
44	8.636	571	573	576	rBV4	339854	937321	23.65%	0.939%
45	8.682	576	577	579	rVV2	373126	580090	14.64%	0.581%
46	8.750	579	583	584	rVV3	518130	1250558	31.55%	1.253%
47	8.785	584	586	587	rVV	900699	1210519	30.54%	1.213%
48	8.807	587	588	590	rVV	1801728	1451282	36.62%	1.454%
49	8.842	590	591	592	rVB	195714	134162	3.38%	0.134%
50	8.865	592	593	594	rBV	289233	385961	9.74%	0.387%
51	8.910	594	597	598	rVV	1079941	1467934	37.04%	1.471%
52	8.967	601	602	603	rBV	415394	415085	10.47%	0.416%
53	9.002	603	605	607	rVB3	791944	1039289	26.22%	1.042%
54	9.116	613	615	617	rBV	3056503	2873668	72.50%	2.880%
55	9.173	617	620	622	rVB	2144974	2671528	67.40%	2.677%
56	9.253	624	627	629	rBV3	860837	1800114	45.42%	1.804%
57	9.287	629	630	631	rVV	426320	526615	13.29%	0.528%
58	9.367	635	637	638	rVV	577185	655261	16.53%	0.657%
59	9.436	640	643	645	rVV	1367170	1942096	49.00%	1.946%
60	9.505	647	649	650	rVV	1517863	1842980	46.50%	1.847%
61	9.539	650	652	653	rVV	1143623	2274104	57.37%	2.279%
62	9.573	653	655	656	rVV	3172883	3963591	100.00%	3.972%
63	9.619	656	659	661	rVV3	598717	1456554	36.75%	1.460%
64	9.710	665	667	669	rVV2	604184	938098	23.67%	0.940%
65	9.745	669	670	672	rVV	714361	918256	23.17%	0.920%
66	9.790	672	674	675	rVV	246350	420783	10.62%	0.422%
67	9.848	675	679	680	rVV3	1416893	2730378	68.89%	2.736%
68	9.882	680	682	683	rVV2	582290	795875	20.08%	0.798%
69	9.950	686	688	690	rVV	707026	818871	20.66%	0.821%
70	9.996	690	692	694	rVV2	324864	626103	15.80%	0.627%
71	10.042	694	696	699	rVV2	809442	1550120	39.11%	1.553%

Data Path : Z:\HPCHEM1\BNA F\DATA\BF030117\  
 Data File : BF093299.D  
 Acq On : 1 Mar 2017 19:47  
 Operator : SJ/MA  
 Sample : I2002-06  
 Misc :  
 ALS Vial : 13 Sample Multiplier: 1

Instrument :  
 BNA\_F  
 ClientSampleId :  
 SSP-7(5.5-7.5)

Integration Parameters: rteint.p  
 Integrator: RTE  
 Smoothing : ON Filtering: 5  
 Sampling : 1 Min Area: 3 % of largest Peak  
 Start Thrs: 0.2 Max Peaks: 100  
 Stop Thrs : 0 Peak Location: TOP

If leading or trailing edge < 100 prefer < Baseline drop else tangent >  
 Peak separation: 5

Method : Z:\HPCHEM1\BNA F\METHODS\8270-BF013017.M  
 Title : ASP BNA STANDARDS FOR 5 POINT CALIBRATION

72	10.088	699	700	705	rVV3	814778	1360061	34.31%	1.363%
73	10.168	705	707	708	rVV	465448	682344	17.22%	0.684%
74	10.248	712	714	717	rVV3	592026	1023183	25.81%	1.025%
75	10.305	717	719	720	rVV2	236301	412797	10.41%	0.414%
76	10.385	724	726	733	rBV7	429173	990377	24.99%	0.992%
77	10.488	733	735	738	rVV	1337250	1826650	46.09%	1.831%
78	10.545	738	740	742	rVB3	271496	383558	9.68%	0.384%
79	10.602	742	745	746	rBV2	112796	246761	6.23%	0.247%
80	10.636	746	748	753	rVB	1704774	2087246	52.66%	2.092%
81	10.762	756	759	761	rBV	2195639	2877541	72.60%	2.884%
82	10.933	772	774	776	rBV3	108369	164879	4.16%	0.165%
83	10.968	776	777	781	rVB3	203682	188414	4.75%	0.189%
84	11.071	785	786	793	rVB6	86642	183327	4.63%	0.184%
85	11.219	797	799	802	rVB2	393117	447665	11.29%	0.449%
86	11.333	806	809	813	rBV2	1006701	1591531	40.15%	1.595%
87	11.939	860	862	866	rVB	128143	172283	4.35%	0.173%
88	12.545	913	915	917	rBV	386912	417148	10.52%	0.418%
89	12.774	932	935	937	rBV	336855	457904	11.55%	0.459%
90	12.911	944	947	950	rBV	2520914	2527792	63.78%	2.533%
91	13.802	1024	1025	1031	rVB	328316	453764	11.45%	0.455%
92	13.962	1036	1039	1045	rVB2	1003622	1510397	38.11%	1.514%
93	14.442	1078	1081	1083	rBV3	98305	182849	4.61%	0.183%
94	14.991	1126	1129	1132	rBV	135138	270426	6.82%	0.271%
95	15.082	1135	1137	1143	rVB3	40553	108784	2.74%	0.109%
96	15.277	1151	1154	1157	rBV	81507	113852	2.87%	0.114%
97	15.334	1157	1159	1161	rBV	123165	138031	3.48%	0.138%
98	15.391	1161	1164	1169	rBV	748094	952167	24.02%	0.954%
99	16.785	1282	1286	1293	rBV2	69871	187759	4.74%	0.188%
100	17.437	1341	1343	1350	rVB3	41575	130583	3.29%	0.131%

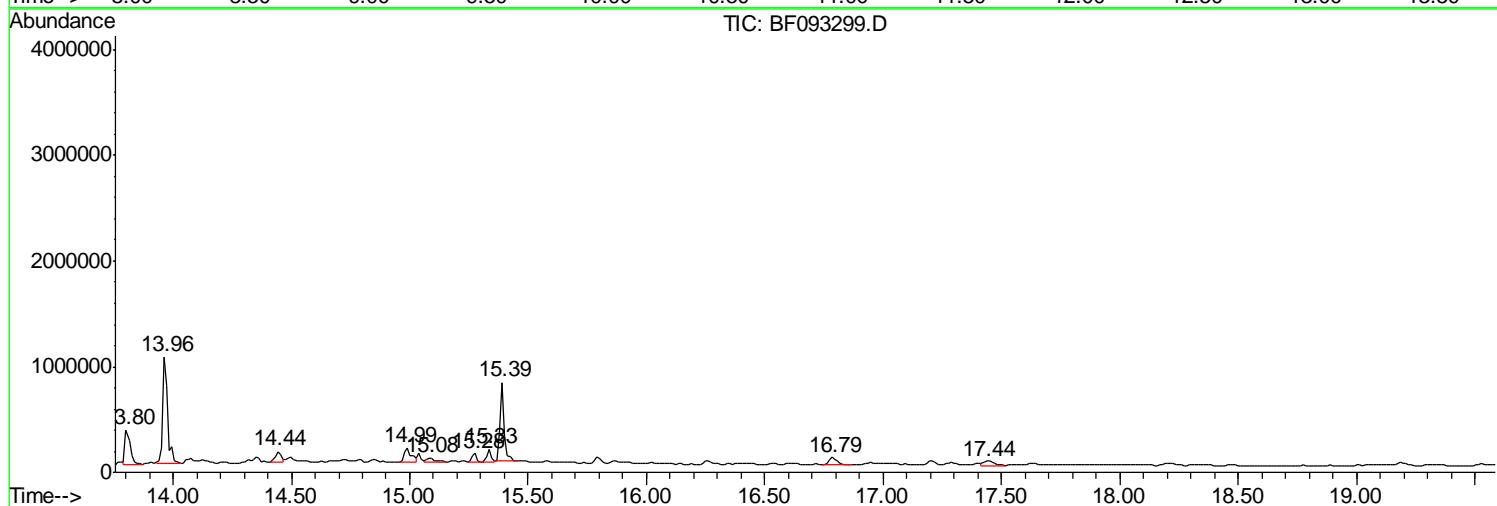
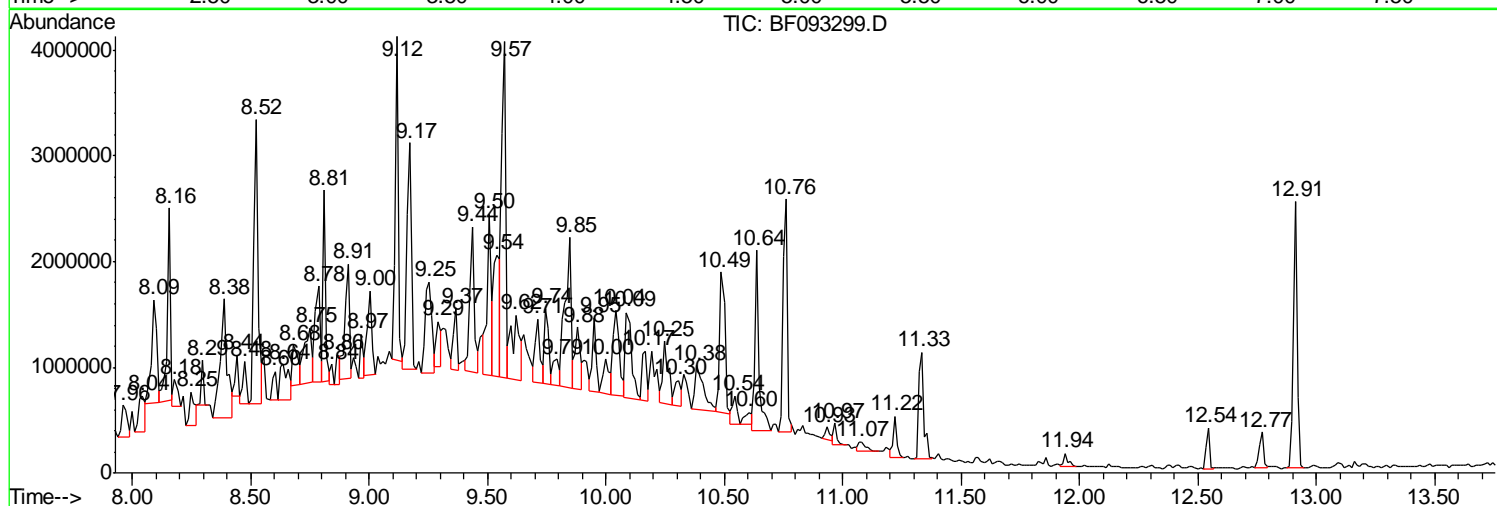
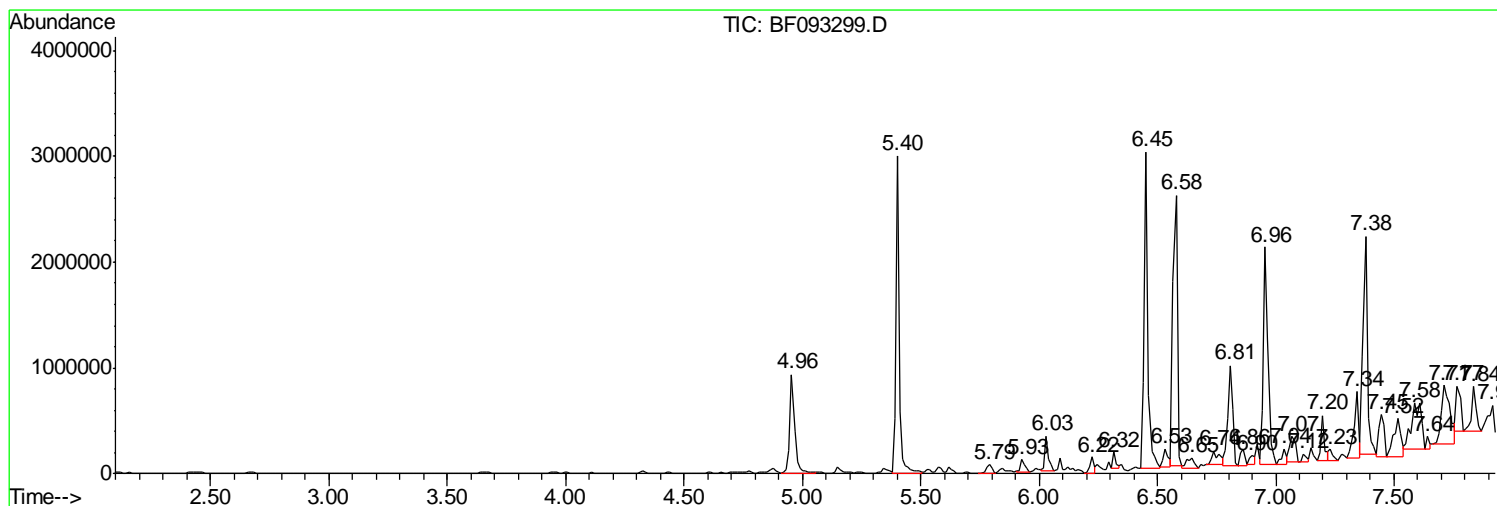
Sum of corrected areas: 99787459

Data Path : Z:\HPCHEM1\BNA F\DATA\BF030117\  
 Data File : BF093299.D  
 Acq On : 1 Mar 2017 19:47  
 Operator : SJ/MA  
 Sample : I2002-06  
 Misc :  
 ALS Vial : 13 Sample Multiplier: 1

**Instrument :**  
 BNA\_F  
**Client Sampled :**  
 SSP-7(5.5-7.5)

Quant Method : Z:\HPCHEM1\BNA F\METHODS\8270-BF013017.M  
 Quant Title : ASP BNA STANDARDS FOR 5 POINT CALIBRATION

TIC Library : C:\DATABASE\NIST02.L  
 TIC Integration Parameters: LSCINT.P



Data Path : Z:\HPCHEM1\BNA F\DATA\BF030117\  
 Data File : BF093299.D  
 Acq On : 1 Mar 2017 19:47  
 Operator : SJ/MA  
 Sample : I2002-06  
 Misc :  
 ALS Vial : 13 Sample Multiplier: 1

Instrument :  
 BNA\_F  
 ClientSampled :  
 SSP-7(5.5-7.5)

Quant Method : Z:\HPCHEM1\BNA F\METHODS\8270-BF013017.M  
 Quant Title : ASP BNA STANDARDS FOR 5 POINT CALIBRATION

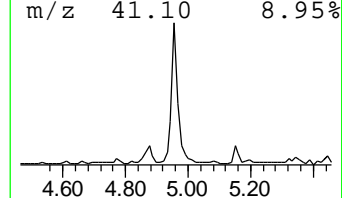
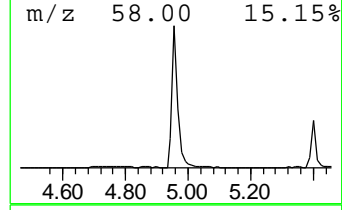
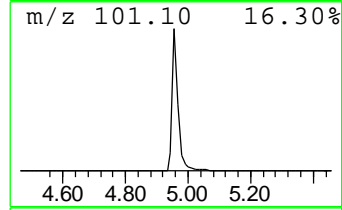
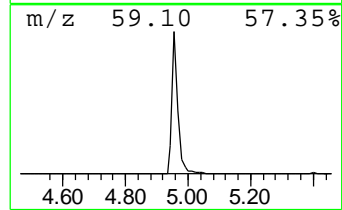
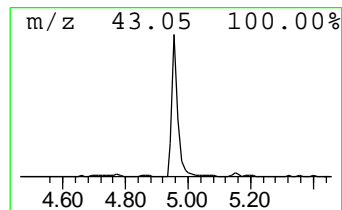
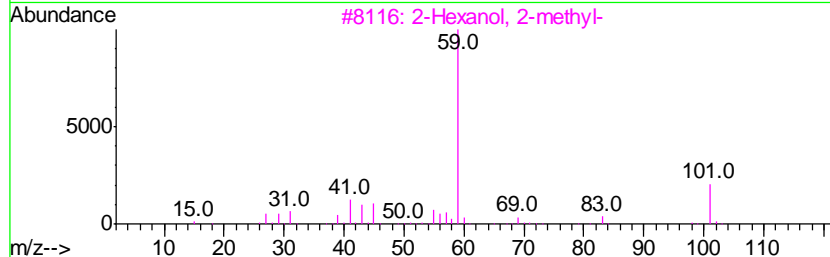
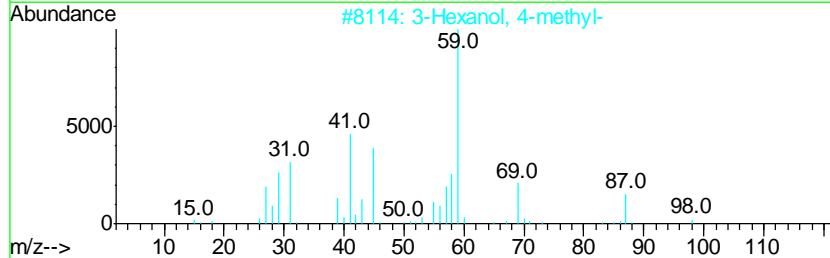
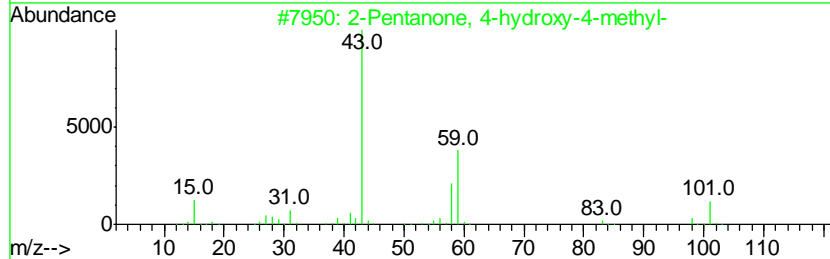
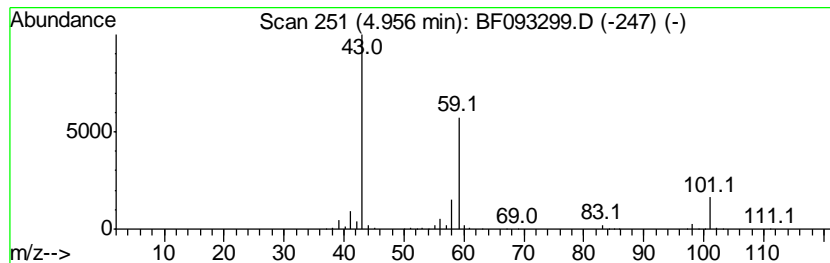
TIC Library : C:\DATABASE\NIST02.L  
 TIC Integration Parameters: LSCINT.P

\*\*\*\*\*  
 Peak Number 1 2-Pentanone, 4-hydroxy-4-me... Concentration Rank 10

R.T.	EstConc	Area	Relative to ISTD	R.T.
4.96	17.15 ng	1232570	1,4-Dichlorobenzene-d4	6.81

Hit#	of	Tentative ID	MW	MolForm	CAS#	Qual
1	5	2-Pentanone, 4-hydroxy-4-methyl-	116	C6H12O2	000123-42-2	53
2		3-Hexanol, 4-methyl-	116	C7H16O	000615-29-2	33
3		2-Hexanol, 2-methyl-	116	C7H16O	000625-23-0	33
4		Acetic acid, cyano-, 1,1-dimethy...	141	C7H11NO2	001116-98-9	23
5		Ethanol, pentamethyl-	116	C7H16O	000594-83-2	9



Data Path : Z:\HPCHEM1\BNA F\DATA\BF030117\  
 Data File : BF093299.D  
 Acq On : 1 Mar 2017 19:47  
 Operator : SJ/MA  
 Sample : I2002-06  
 Misc :  
 ALS Vial : 13 Sample Multiplier: 1

Instrument :  
 BNA\_F  
 ClientSampleID :  
 SSP-7(5.5-7.5)

Quant Method : Z:\HPCHEM1\BNA F\METHODS\8270-BF013017.M  
 Quant Title : ASP BNA STANDARDS FOR 5 POINT CALIBRATION

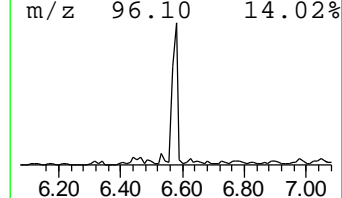
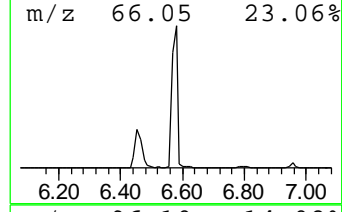
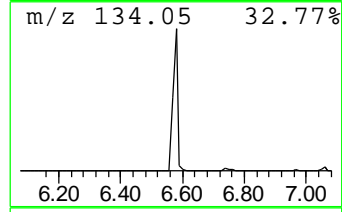
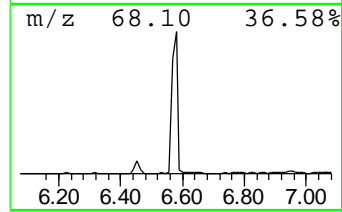
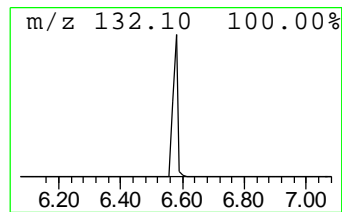
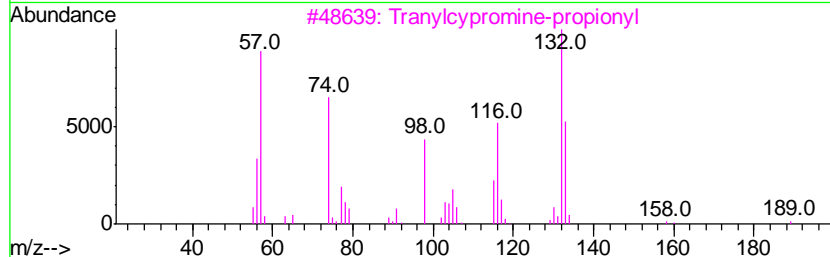
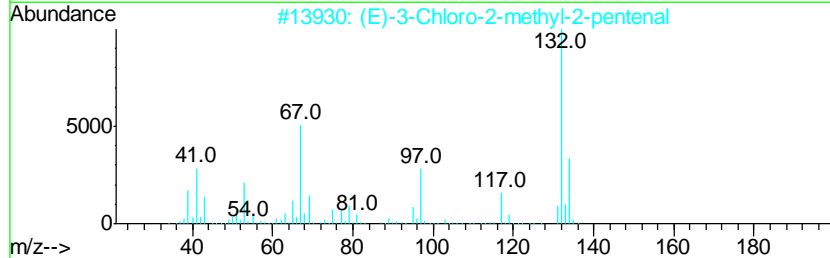
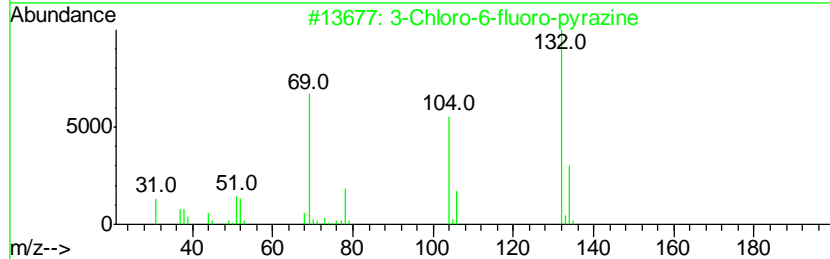
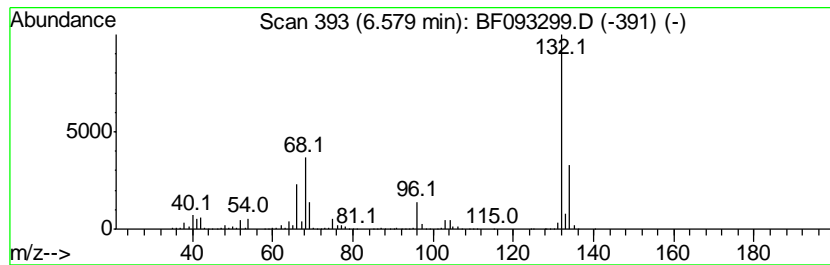
TIC Library : C:\DATABASE\NIST02.L  
 TIC Integration Parameters: LSCINT.P

\*\*\*\*\*  
 Peak Number 2 unknown6.58 Concentration Rank 2

R.T.	EstConc	Area	Relative to ISTD	R.T.
6.58	41.98 ng	3017080	1,4-Dichlorobenzene-d4	6.81

Hit#	of	Tentative ID	MW	MolForm	CAS#	Qual
1	5	3-Chloro-6-fluoro-pyrazine	132	C4H2ClFN2	1000146-10-7	35
2		(E)-3-Chloro-2-methyl-2-pentenal	132	C6H9ClO	031357-76-3	25
3		Tranylcypromine-propionyl	189	C12H15NO	1000123-86-3	16
4		5-Aminoindole	132	C8H8N2	005192-03-0	16
5		Amphetaminil	250	C17H18N2	017590-01-1	12



Data Path : Z:\HPCHEM1\BNA F\DATA\BF030117\  
 Data File : BF093299.D  
 Acq On : 1 Mar 2017 19:47  
 Operator : SJ/MA  
 Sample : I2002-06  
 Misc :  
 ALS Vial : 13 Sample Multiplier: 1

Instrument :  
 BNA\_F  
 ClientSampled :  
 SSP-7(5.5-7.5)

Quant Method : Z:\HPCHEM1\BNA F\METHODS\8270-BF013017.M  
 Quant Title : ASP BNA STANDARDS FOR 5 POINT CALIBRATION

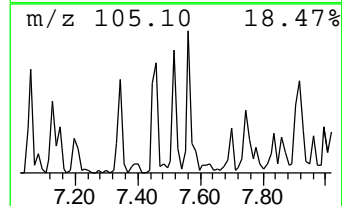
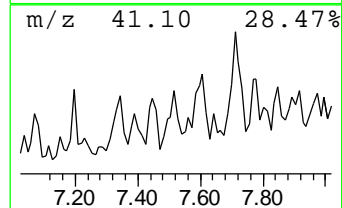
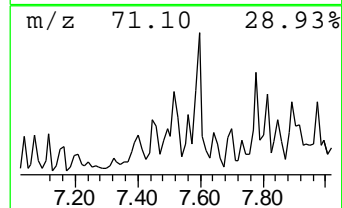
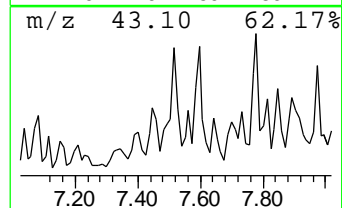
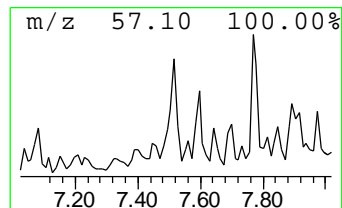
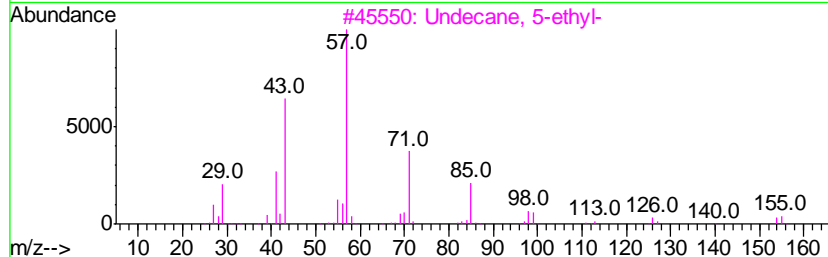
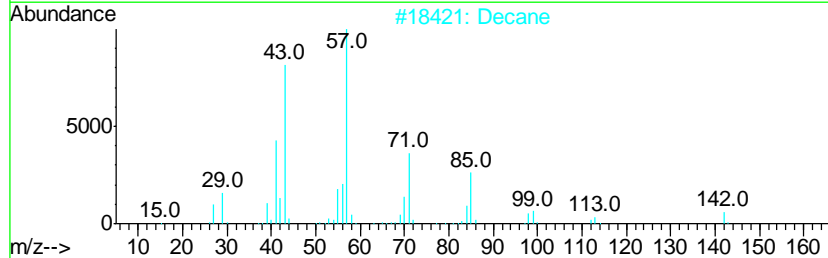
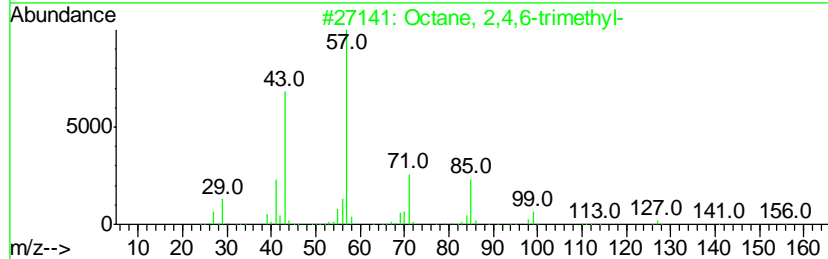
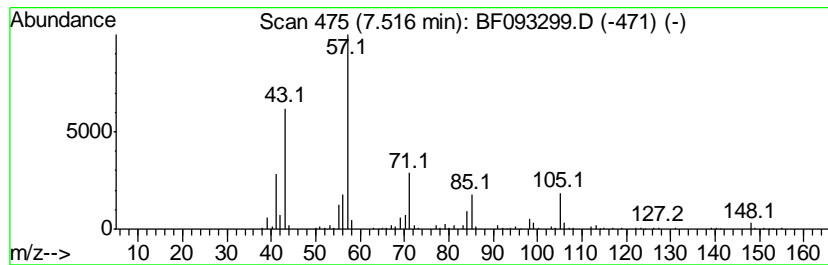
TIC Library : C:\DATABASE\NIST02.L  
 TIC Integration Parameters: LSCINT.P

\*\*\*\*\*  
 Peak Number 4 Octane, 2,4,6-trimethyl- Concentration Rank 20

R.T.	EstConc	Area	Relative to ISTD	R.T.
7.52	10.22 ng	794094	Naphthalene-d8	8.10

Hit#	of	Tentative ID	MW	MolForm	CAS#	Qual
1	5	Octane, 2,4,6-trimethyl-	156	C11H24	062016-37-9	53
2		Decane	142	C10H22	000124-18-5	53
3		Undecane, 5-ethyl-	184	C13H28	017453-94-0	53
4		Decane, 5-methyl-	156	C11H24	013151-35-4	50
5		Undecane	156	C11H24	001120-21-4	50



Data Path : Z:\HPCHEM1\BNA F\DATA\BF030117\  
 Data File : BF093299.D  
 Acq On : 1 Mar 2017 19:47  
 Operator : SJ/MA  
 Sample : I2002-06  
 Misc :  
 ALS Vial : 13 Sample Multiplier: 1

Instrument :  
 BNA\_F  
 ClientSampleID :  
 SSP-7(5.5-7.5)

Quant Method : Z:\HPCHEM1\BNA F\METHODS\8270-BF013017.M  
 Quant Title : ASP BNA STANDARDS FOR 5 POINT CALIBRATION

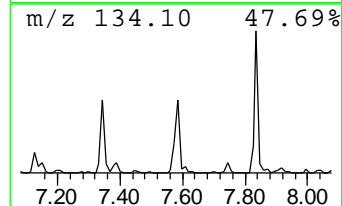
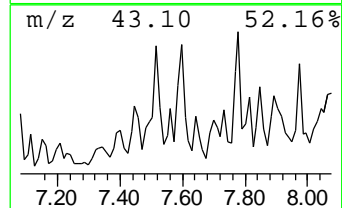
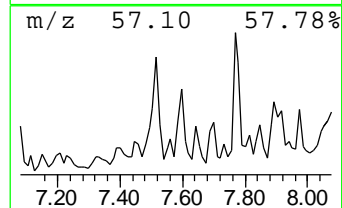
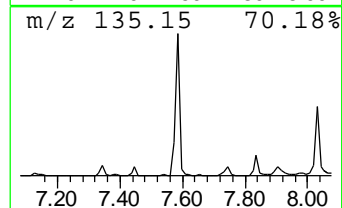
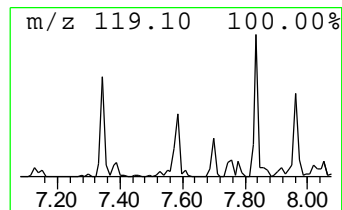
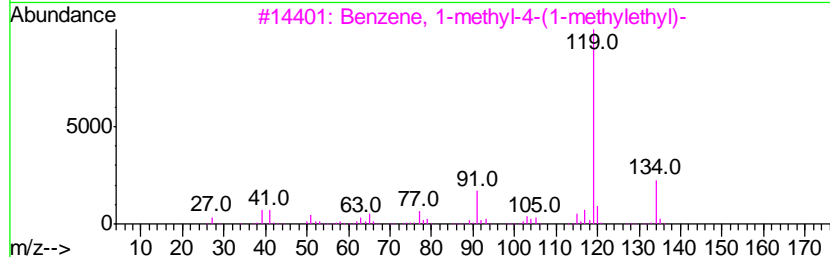
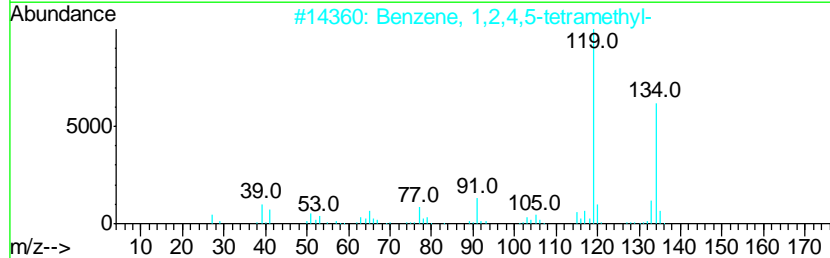
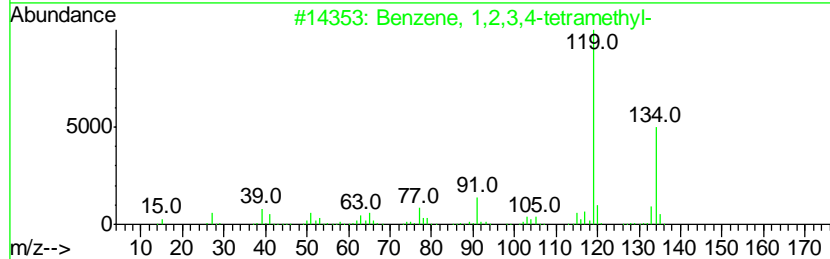
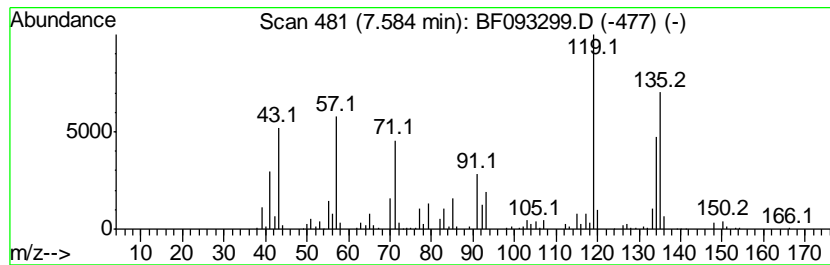
TIC Library : C:\DATABASE\NIST02.L  
 TIC Integration Parameters: LSCINT.P

\*\*\*\*\*  
 Peak Number 5 Benzene, 1,2,3,4-tetramethyl- Concentration Rank 12

R.T.	EstConc	Area	Relative to ISTD	R.T.
7.58	15.87 ng	1233650	Naphthalene-d8	8.10

Hit#	of	Tentative ID	MW	MolForm	CAS#	Qual
1	5	Benzene, 1,2,3,4-tetramethyl-	134	C10H14	000488-23-3	87
2		Benzene, 1,2,4,5-tetramethyl-	134	C10H14	000095-93-2	87
3		Benzene, 1-methyl-4-(1-methyleth...	134	C10H14	000099-87-6	55
4		Benzene, 1,2,3,5-tetramethyl-	134	C10H14	000527-53-7	55
5		Benzene, 1-ethyl-3,5-dimethyl-	134	C10H14	000934-74-7	55





Data Path : Z:\HPCHEM1\BNA F\DATA\BF030117\  
 Data File : BF093299.D  
 Acq On : 1 Mar 2017 19:47  
 Operator : SJ/MA  
 Sample : I2002-06  
 Misc :  
 ALS Vial : 13 Sample Multiplier: 1

Instrument :  
 BNA\_F  
 ClientSampleID :  
 SSP-7(5.5-7.5)

Quant Method : Z:\HPCHEM1\BNA F\METHODS\8270-BF013017.M  
 Quant Title : ASP BNA STANDARDS FOR 5 POINT CALIBRATION

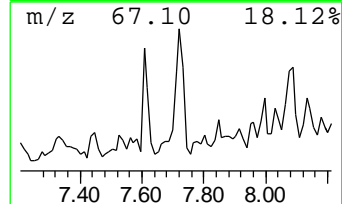
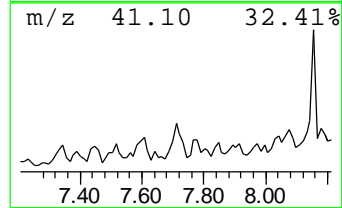
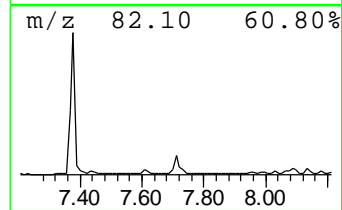
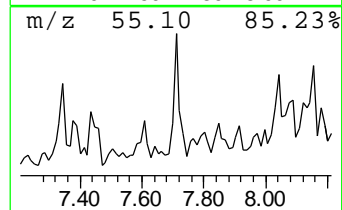
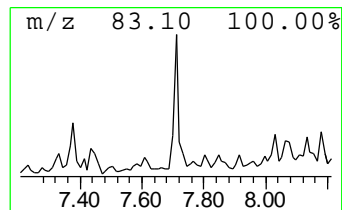
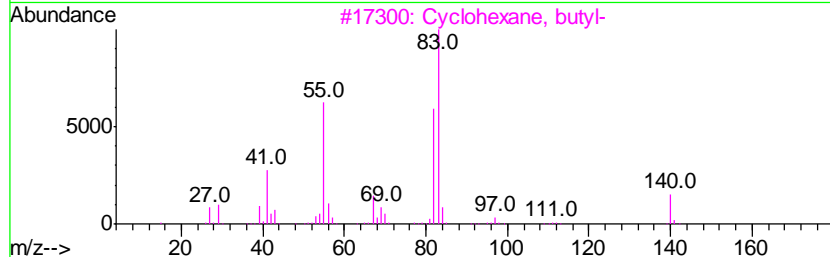
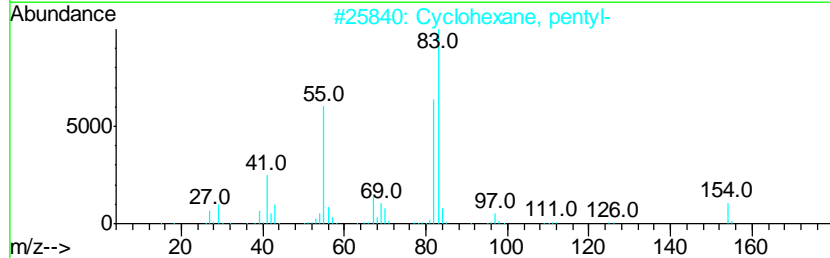
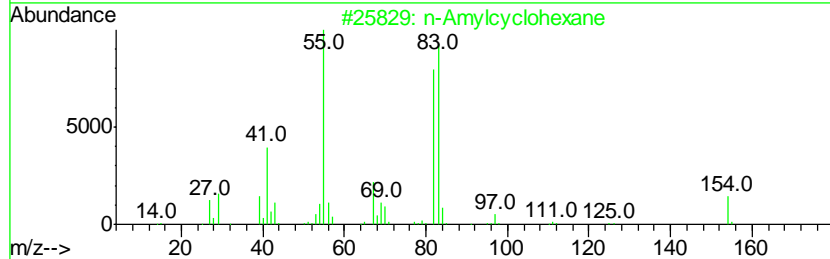
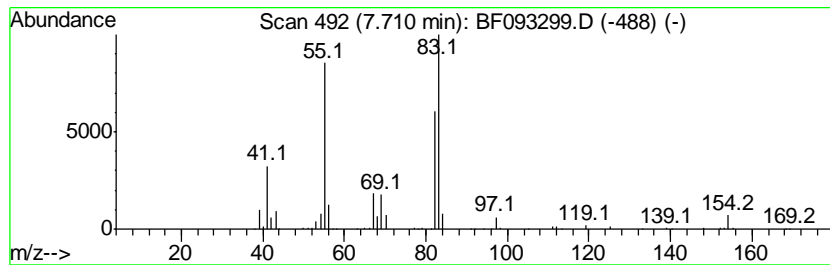
TIC Library : C:\DATABASE\NIST02.L  
 TIC Integration Parameters: LSCINT.P

\*\*\*\*\*  
 Peak Number 6 n-Amylcyclohexane Concentration Rank 8

R.T.	EstConc	Area	Relative to ISTD	R.T.
7.71	19.09 ng	1483820	Naphthalene-d8	8.10

Hit#	of	Tentative ID	MW	MolForm	CAS#	Qual
1	5	n-Amylcyclohexane	154	C11H22	029949-27-7	91
2		Cyclohexane, pentyl-	154	C11H22	004292-92-6	90
3		Cyclohexane, butyl-	140	C10H20	001678-93-9	90
4		Cyclohexane, octyl-	196	C14H28	001795-15-9	86
5		Cyclohexane, tetradecyl-	280	C20H40	001795-18-2	83



Data Path : Z:\HPCHEM1\BNA F\DATA\BF030117\  
 Data File : BF093299.D  
 Acq On : 1 Mar 2017 19:47  
 Operator : SJ/MA  
 Sample : I2002-06  
 Misc :  
 ALS Vial : 13 Sample Multiplier: 1

Instrument :  
 BNA\_F  
 ClientSampleID :  
 SSP-7(5.5-7.5)

Quant Method : Z:\HPCHEM1\BNA F\METHODS\8270-BF013017.M  
 Quant Title : ASP BNA STANDARDS FOR 5 POINT CALIBRATION

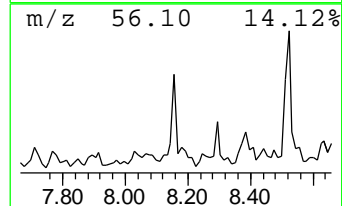
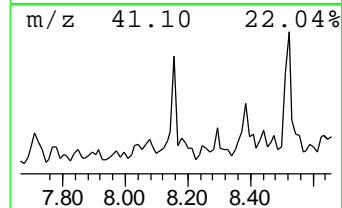
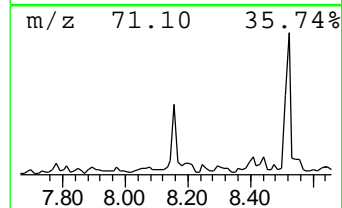
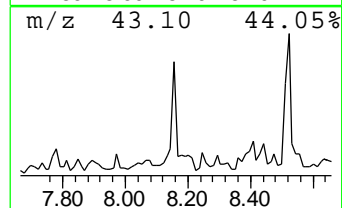
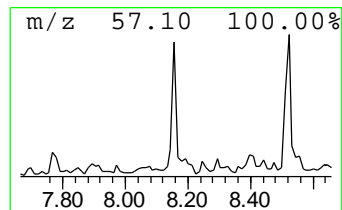
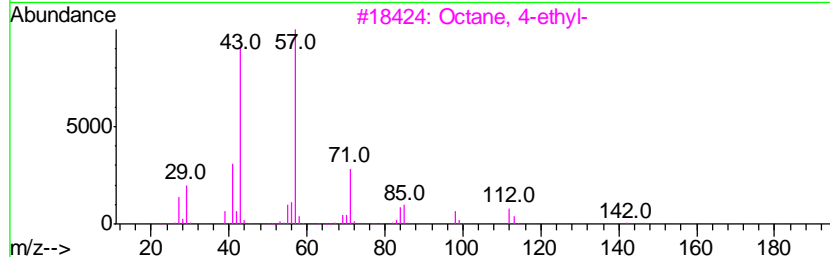
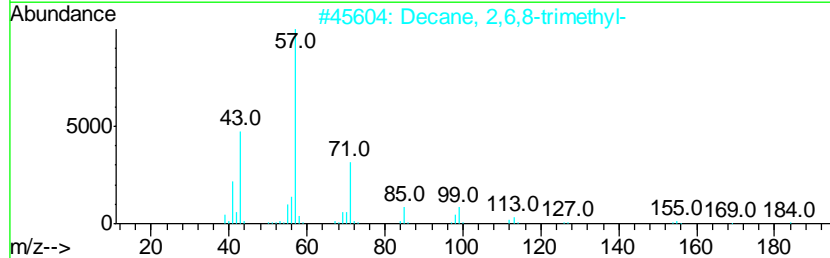
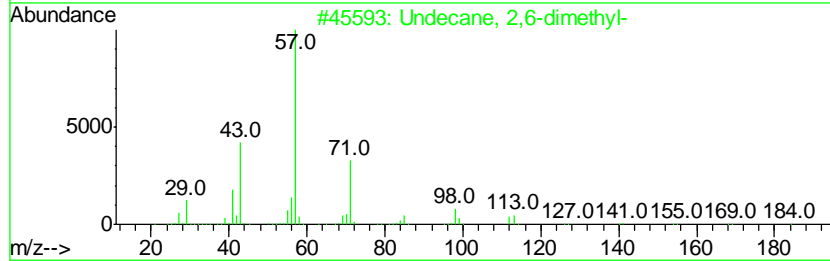
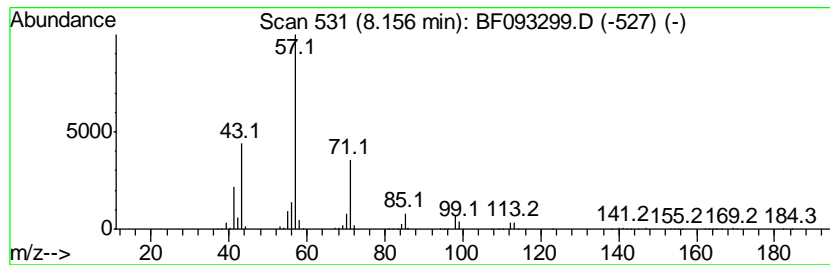
TIC Library : C:\DATABASE\NIST02.L  
 TIC Integration Parameters: LSCINT.P

\*\*\*\*\*  
 Peak Number 7 Undecane, 2,6-dimethyl- Concentration Rank 6

R.T.	EstConc	Area	Relative to ISTD	R.T.
8.16	22.92 ng	1781440	Naphthalene-d8	8.10

Hit#	of	Tentative ID	MW	MolForm	CAS#	Qual
1	5	Undecane, 2,6-dimethyl-	184	C13H28	017301-23-4	86
2		Decane, 2,6,8-trimethyl-	184	C13H28	062108-26-3	78
3		Octane, 4-ethyl-	142	C10H22	015869-86-0	64
4		Nonane, 4-methyl-	142	C10H22	017301-94-9	64
5		Undecane, 5-ethyl-	184	C13H28	017453-94-0	64



Data Path : Z:\HPCHEM1\BNA F\DATA\BF030117\  
 Data File : BF093299.D  
 Acq On : 1 Mar 2017 19:47  
 Operator : SJ/MA  
 Sample : I2002-06  
 Misc :  
 ALS Vial : 13 Sample Multiplier: 1

Instrument :  
 BNA\_F  
 ClientSampleID :  
 SSP-7(5.5-7.5)

Quant Method : Z:\HPCHEM1\BNA F\METHODS\8270-BF013017.M  
 Quant Title : ASP BNA STANDARDS FOR 5 POINT CALIBRATION

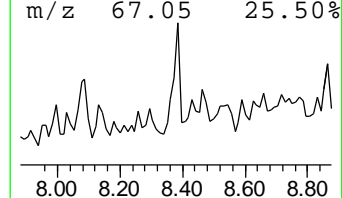
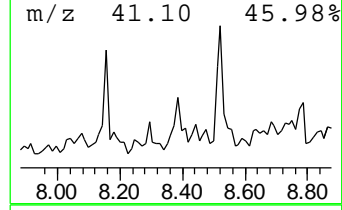
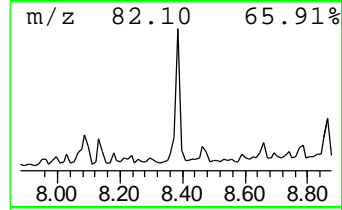
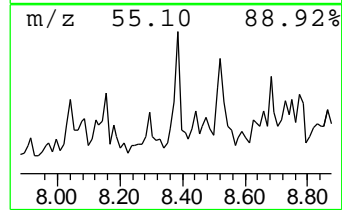
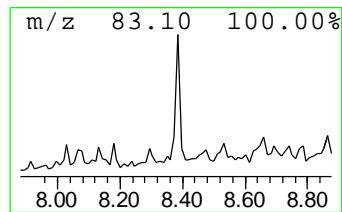
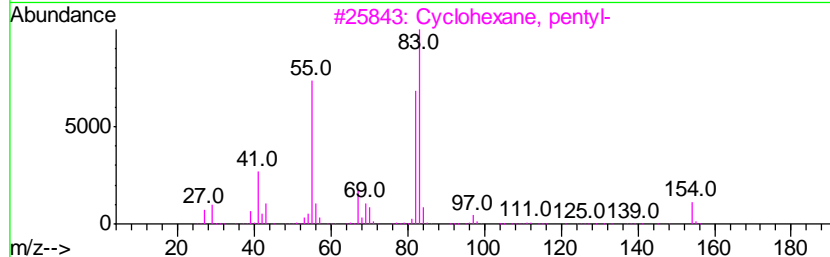
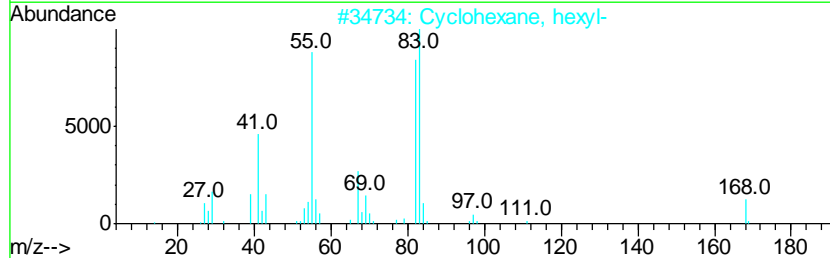
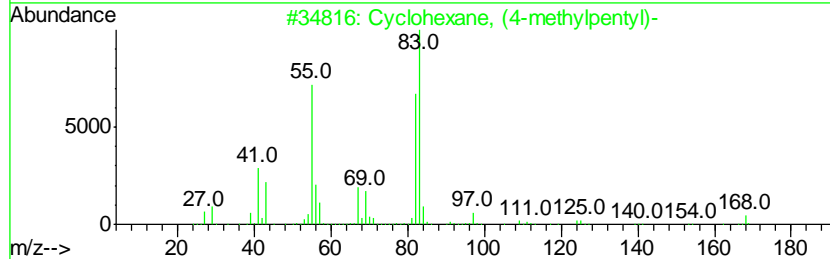
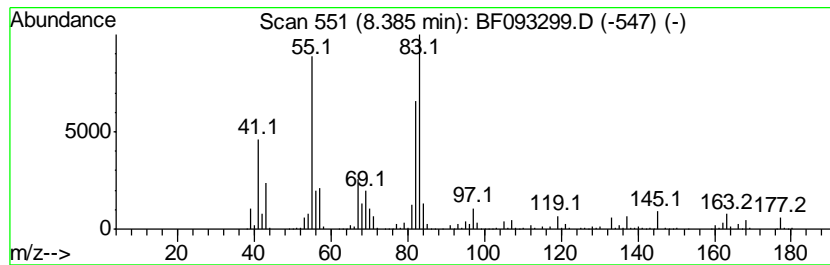
TIC Library : C:\DATABASE\NIST02.L  
 TIC Integration Parameters: LSCINT.P

\*\*\*\*\*  
 Peak Number 8 Cyclohexane, (4-methylpentyl)- Concentration Rank 5

R.T.	EstConc	Area	Relative to ISTD	R.T.
8.38	27.92 ng	2170400	Napthalene-d8	8.10

Hit#	of	Tentative ID	MW	MolForm	CAS#	Qual
1	5	Cyclohexane, (4-methylpentyl)-	168	C12H24	061142-20-9	90
2		Cyclohexane, hexyl-	168	C12H24	004292-75-5	72
3		Cyclohexane, pentyl-	154	C11H22	004292-92-6	72
4		Cyclohexane, 1,1'-(1,4-butanedi...	222	C16H30	006165-44-2	64
5		Cyclohexane, ethyl-	112	C8H16	001678-91-7	64



Data Path : Z:\HPCHEM1\BNA F\DATA\BF030117\  
 Data File : BF093299.D  
 Acq On : 1 Mar 2017 19:47  
 Operator : SJ/MA  
 Sample : I2002-06  
 Misc :  
 ALS Vial : 13 Sample Multiplier: 1

Instrument :  
 BNA\_F  
 ClientSampleID :  
 SSP-7(5.5-7.5)

Quant Method : Z:\HPCHEM1\BNA F\METHODS\8270-BF013017.M  
 Quant Title : ASP BNA STANDARDS FOR 5 POINT CALIBRATION

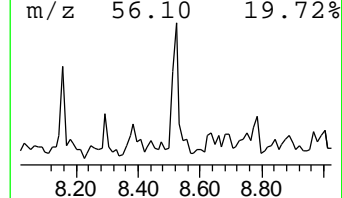
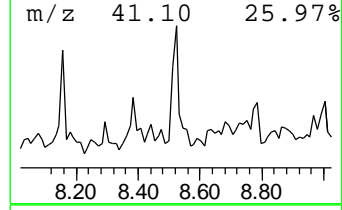
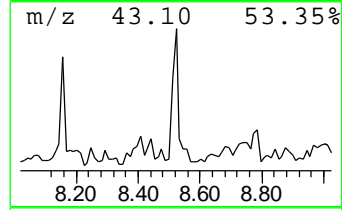
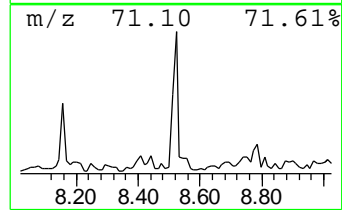
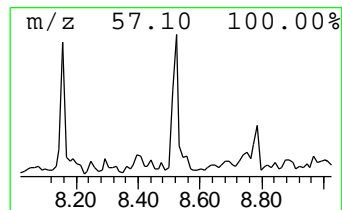
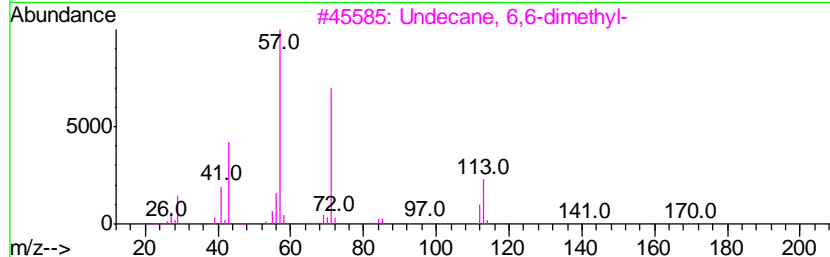
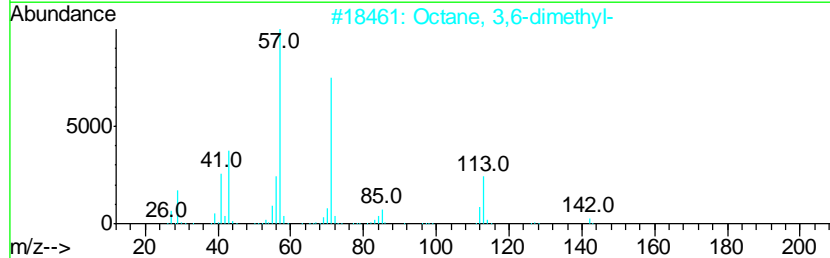
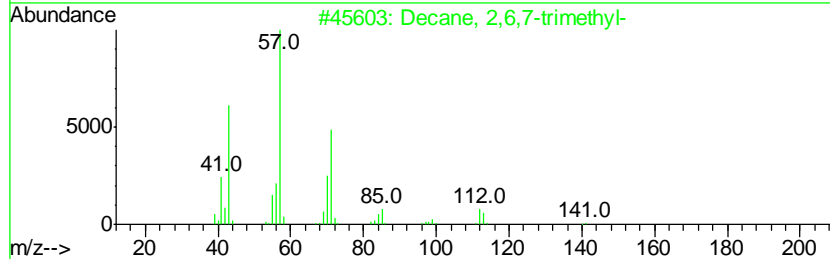
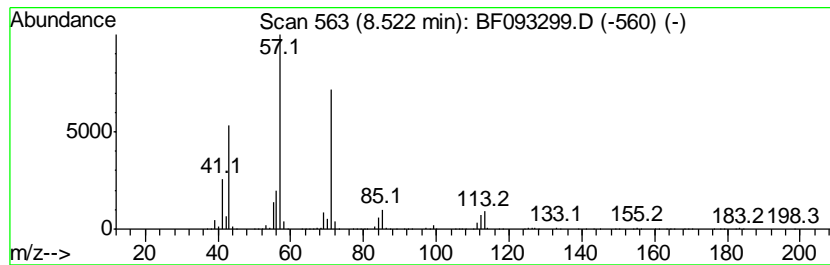
TIC Library : C:\DATABASE\NIST02.L  
 TIC Integration Parameters: LSCINT.P

\*\*\*\*\*  
 Peak Number 9 Decane, 2,6,7-trimethyl- Concentration Rank 1

R.T.	EstConc	Area	Relative to ISTD	R.T.
8.52	46.84 ng	3640820	Naphthalene-d8	8.10

Hit#	of	Tentative ID	MW	MolForm	CAS#	Qual
1	5	Decane, 2,6,7-trimethyl-	184	C13H28	062108-25-2	83
2		Octane, 3,6-dimethyl-	142	C10H22	015869-94-0	78
3		Undecane, 6,6-dimethyl-	184	C13H28	017312-76-4	78
4		Undecane, 2,6-dimethyl-	184	C13H28	017301-23-4	72
5		Octane, 2,6-dimethyl-	142	C10H22	002051-30-1	53



Data Path : Z:\HPCHEM1\BNA F\DATA\BF030117\  
 Data File : BF093299.D  
 Acq On : 1 Mar 2017 19:47  
 Operator : SJ/MA  
 Sample : I2002-06  
 Misc :  
 ALS Vial : 13 Sample Multiplier: 1

Instrument :  
 BNA\_F  
 ClientSampleId :  
 SSP-7(5.5-7.5)

Quant Method : Z:\HPCHEM1\BNA F\METHODS\8270-BF013017.M  
 Quant Title : ASP BNA STANDARDS FOR 5 POINT CALIBRATION

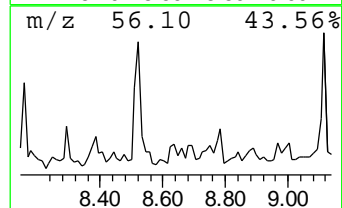
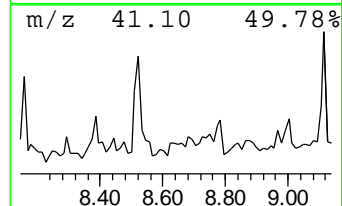
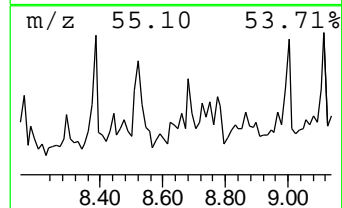
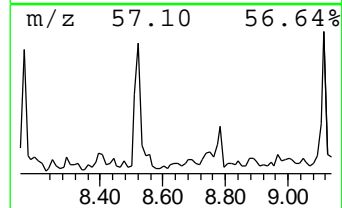
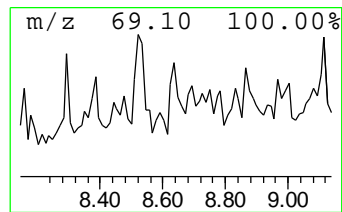
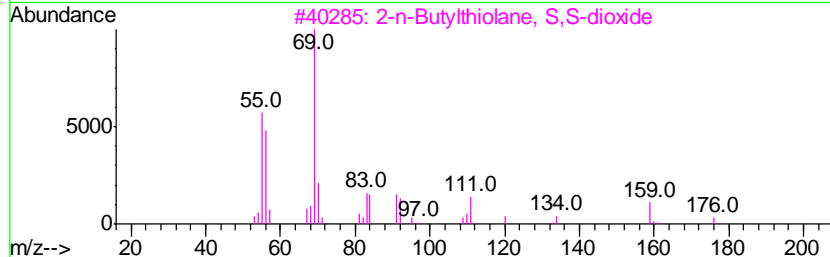
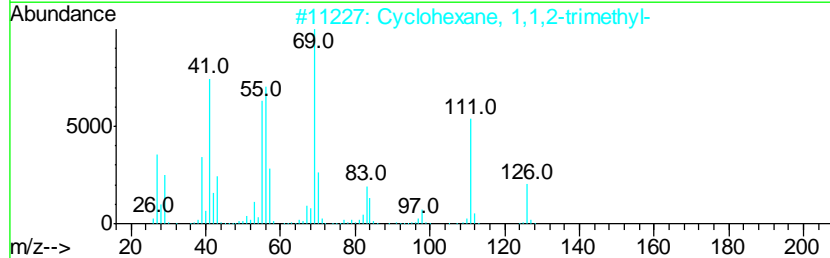
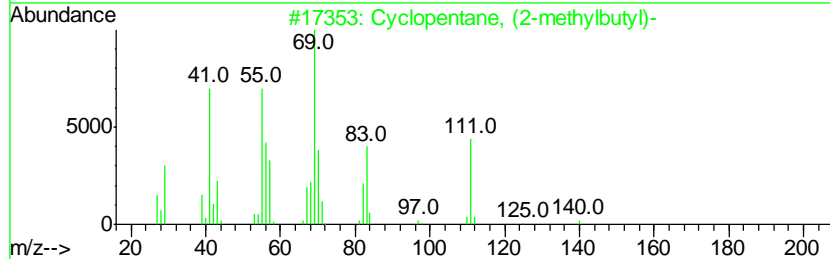
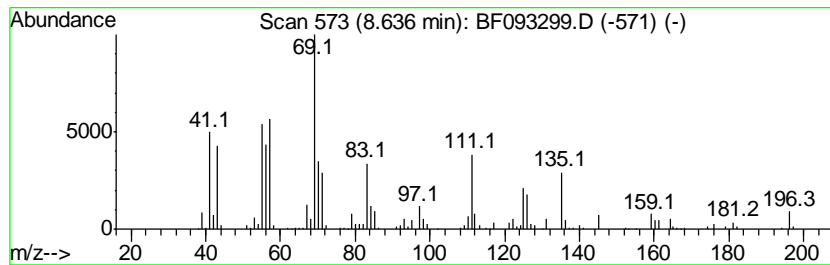
TIC Library : C:\DATABASE\NIST02.L  
 TIC Integration Parameters: LSCINT.P

\*\*\*\*\*  
 Peak Number 10 Cyclopentane, (2-methylbutyl)- Concentration Rank 17

R.T.	EstConc	Area	Relative to ISTD	R.T.
8.64	12.06 ng	937321	Naphthalene-d8	8.10

Hit#	of	Tentative ID	MW	MolForm	CAS#	Qual
1	5	Cyclopentane, (2-methylbutyl)-	140	C10H20	053366-38-4	52
2		Cyclohexane, 1,1,2-trimethyl-	126	C9H18	007094-26-0	46
3		2-n-Butylthiolane, S,S-dioxide	176	C8H16O2S	071053-03-7	46
4		2-(Acetylmethylene)tetrahydrofuran	126	C7H10O2	112595-65-0	46
5		3-Heptene, 2,6-dimethyl-	126	C9H18	002738-18-3	46



Data Path : Z:\HPCHEM1\BNA F\DATA\BF030117\  
 Data File : BF093299.D  
 Acq On : 1 Mar 2017 19:47  
 Operator : SJ/MA  
 Sample : I2002-06  
 Misc :  
 ALS Vial : 13 Sample Multiplier: 1

Instrument :  
 BNA\_F  
 ClientSampled :  
 SSP-7(5.5-7.5)

Quant Method : Z:\HPCHEM1\BNA F\METHODS\8270-BF013017.M  
 Quant Title : ASP BNA STANDARDS FOR 5 POINT CALIBRATION

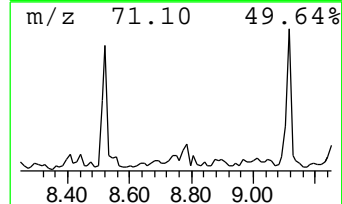
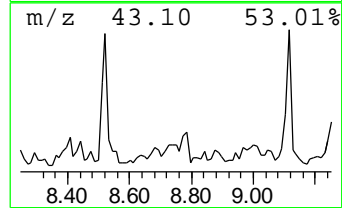
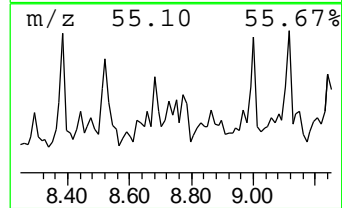
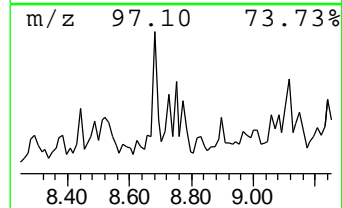
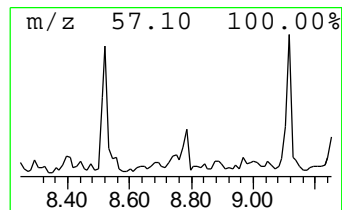
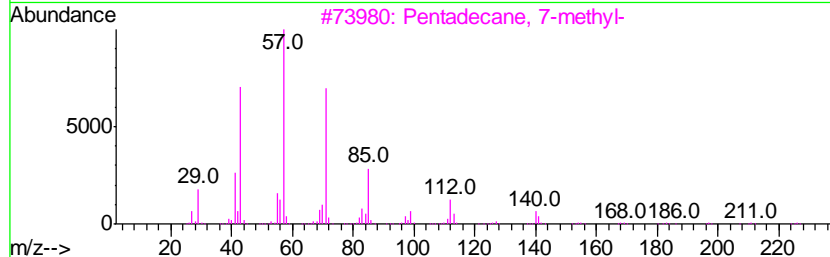
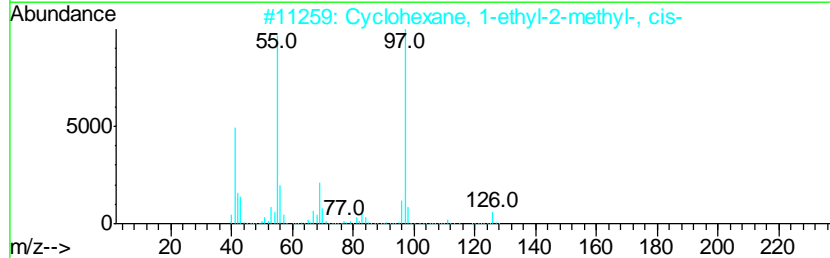
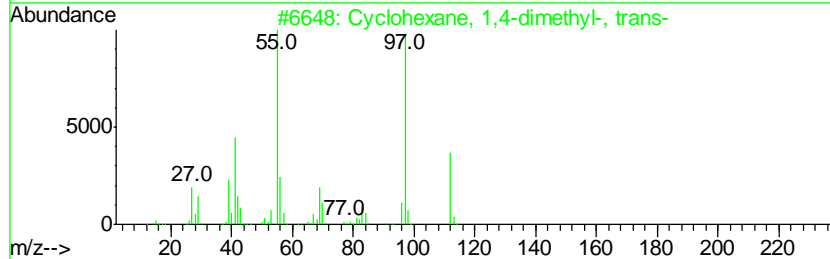
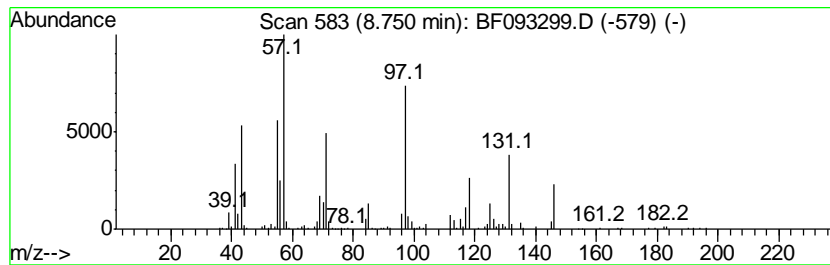
TIC Library : C:\DATABASE\NIST02.L  
 TIC Integration Parameters: LSCINT.P

\*\*\*\*\*  
 Peak Number 11 unknown8.75 Concentration Rank 11

R.T.	EstConc	Area	Relative to ISTD	R.T.
8.75	16.09 ng	1250560	Naphthalene-d8	8.10

Hit#	of	Tentative ID	MW	MolForm	CAS#	Qual
1	5	Cyclohexane, 1,4-dimethyl-, trans-	112	C8H16	002207-04-7	22
2		Cyclohexane, 1-ethyl-2-methyl-, ...	126	C9H18	004923-77-7	18
3		Pentadecane, 7-methyl-	226	C16H34	006165-40-8	14
4		Nonane, 3-methyl-	142	C10H22	005911-04-6	14
5		Heptadecane, 7-methyl-	254	C18H38	020959-33-5	14



Data Path : Z:\HPCHEM1\BNA F\DATA\BF030117\  
 Data File : BF093299.D  
 Acq On : 1 Mar 2017 19:47  
 Operator : SJ/MA  
 Sample : I2002-06  
 Misc :  
 ALS Vial : 13 Sample Multiplier: 1

Instrument :  
 BNA\_F  
 ClientSampleID :  
 SSP-7(5.5-7.5)

Quant Method : Z:\HPCHEM1\BNA F\METHODS\8270-BF013017.M  
 Quant Title : ASP BNA STANDARDS FOR 5 POINT CALIBRATION

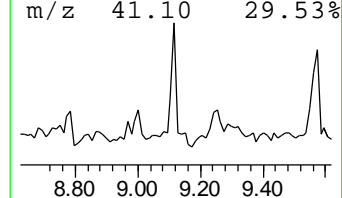
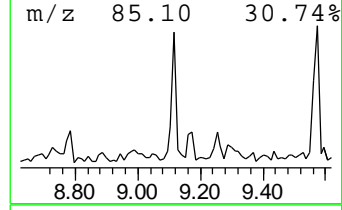
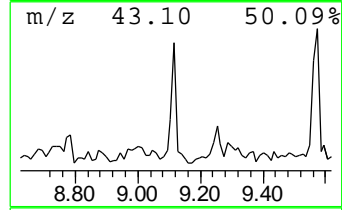
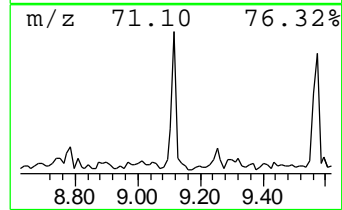
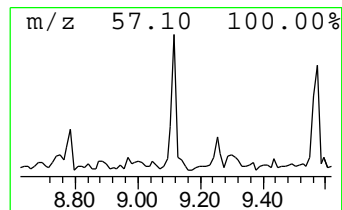
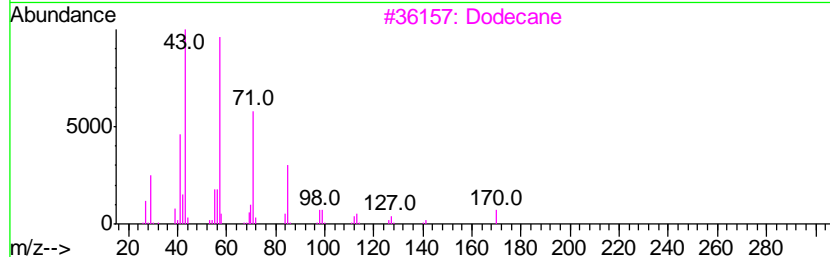
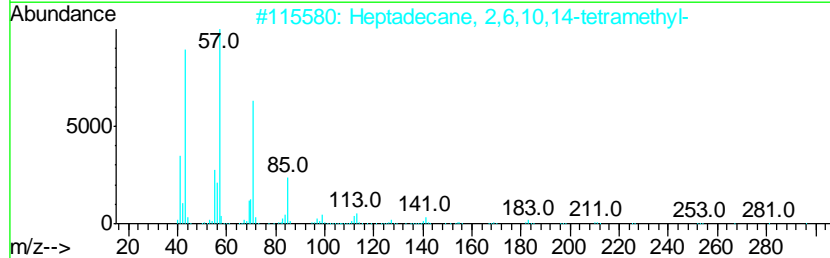
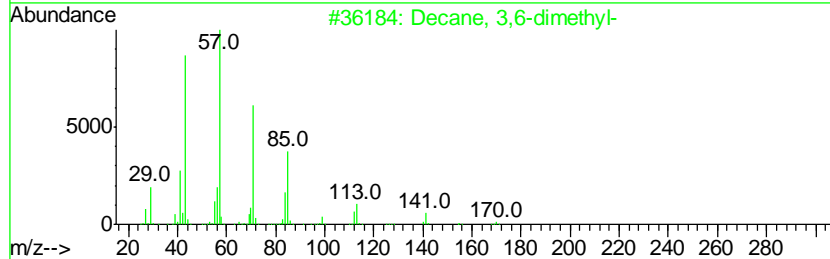
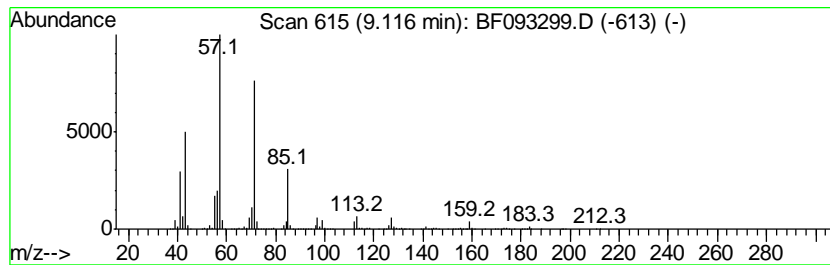
TIC Library : C:\DATABASE\NIST02.L  
 TIC Integration Parameters: LSCINT.P

\*\*\*\*\*  
 Peak Number 13 Decane, 3,6-dimethyl- Concentration Rank 7

R.T.	EstConc	Area	Relative to ISTD	R.T.
9.12	21.05 ng	2873670	Acenaphthene-d10	9.85

Hit#	of	Tentative ID	MW	MolForm	CAS#	Qual
1	5	Decane, 3,6-dimethyl-	170	C12H26	017312-53-7	90
2		Heptadecane, 2,6,10,14-tetramethyl-	296	C21H44	018344-37-1	83
3		Dodecane	170	C12H26	000112-40-3	83
4		Dodecane, 2,7,10-trimethyl-	212	C15H32	074645-98-0	80
5		Nonane, 3-methyl-5-propyl-	184	C13H28	031081-18-2	72



Data Path : Z:\HPCHEM1\BNA F\DATA\BF030117\  
 Data File : BF093299.D  
 Acq On : 1 Mar 2017 19:47  
 Operator : SJ/MA  
 Sample : I2002-06  
 Misc :  
 ALS Vial : 13 Sample Multiplier: 1

Instrument :  
 BNA\_F  
 ClientSampleID :  
 SSP-7(5.5-7.5)

Quant Method : Z:\HPCHEM1\BNA F\METHODS\8270-BF013017.M  
 Quant Title : ASP BNA STANDARDS FOR 5 POINT CALIBRATION

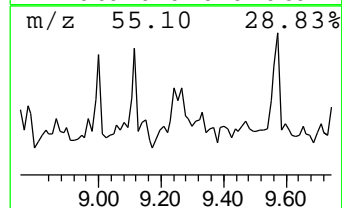
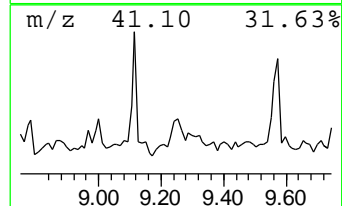
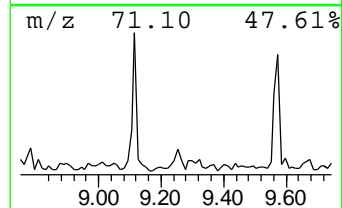
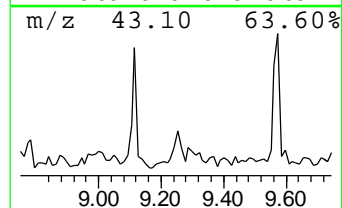
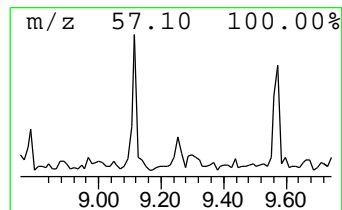
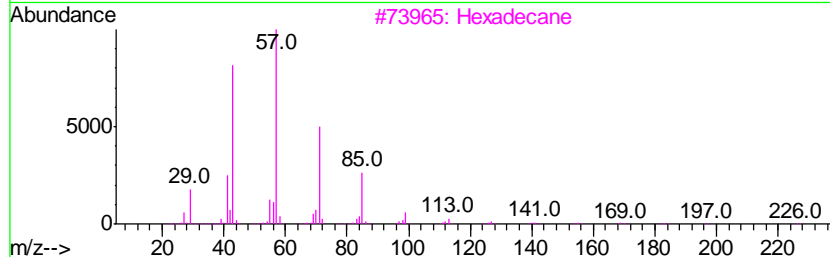
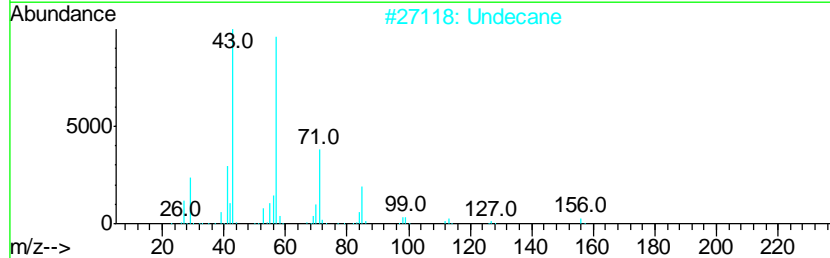
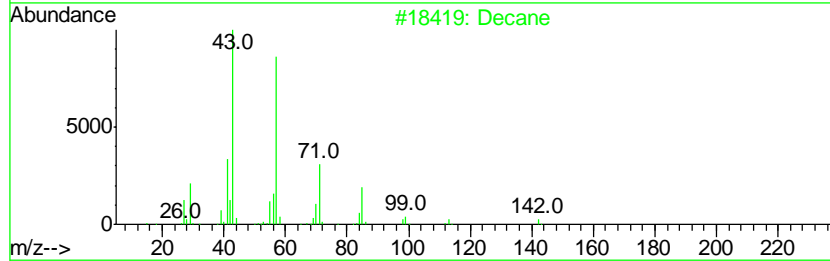
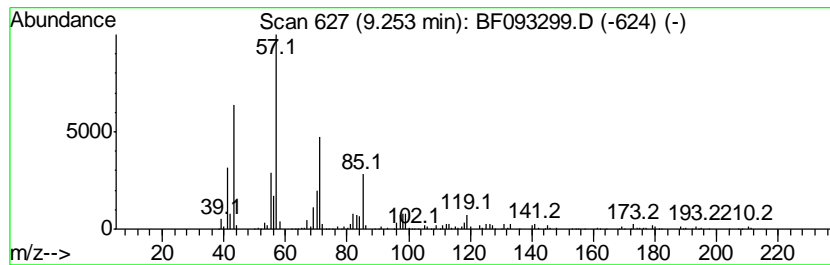
TIC Library : C:\DATABASE\NIST02.L  
 TIC Integration Parameters: LSCINT.P

\*\*\*\*\*  
 Peak Number 14 Decane Concentration Rank 16

R.T.	EstConc	Area	Relative to ISTD	R.T.
9.25	13.19 ng	1800110	Acenaphthene-d10	9.85

Hit#	of	Tentative ID	MW	MolForm	CAS#	Qual
1	5	Decane	142	C10H22	000124-18-5	83
2		Undecane	156	C11H24	001120-21-4	64
3		Hexadecane	226	C16H34	000544-76-3	59
4		Nonane	128	C9H20	000111-84-2	58
5		Tetradecane	198	C14H30	000629-59-4	53





Data Path : Z:\HPCHEM1\BNA F\DATA\BF030117\  
 Data File : BF093299.D  
 Acq On : 1 Mar 2017 19:47  
 Operator : SJ/MA  
 Sample : I2002-06  
 Misc :  
 ALS Vial : 13 Sample Multiplier: 1

Instrument :  
 BNA\_F  
 ClientSampleID :  
 SSP-7(5.5-7.5)

Quant Method : Z:\HPCHEM1\BNA F\METHODS\8270-BF013017.M  
 Quant Title : ASP BNA STANDARDS FOR 5 POINT CALIBRATION

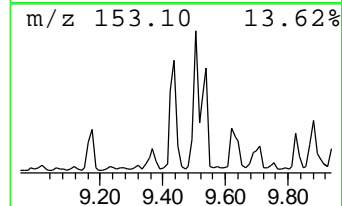
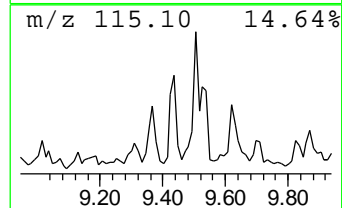
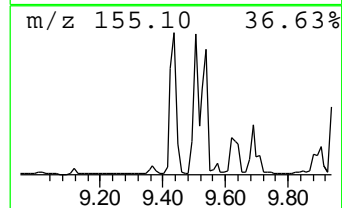
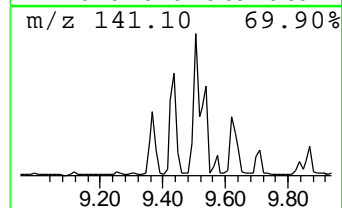
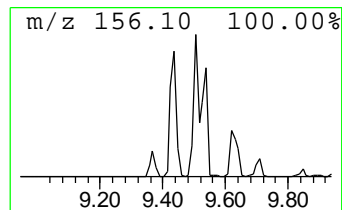
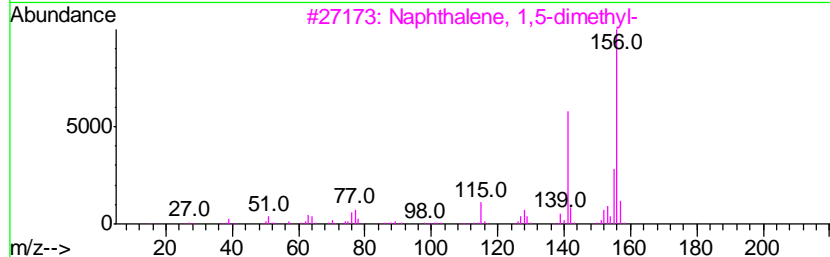
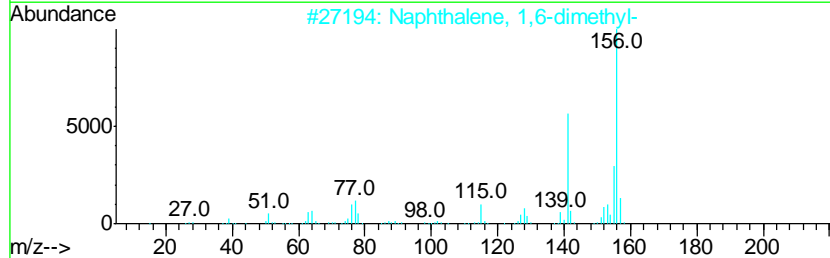
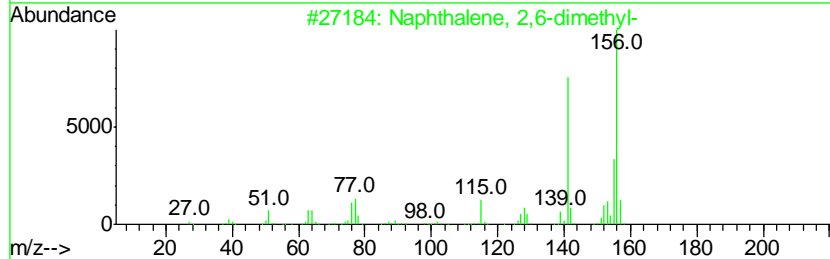
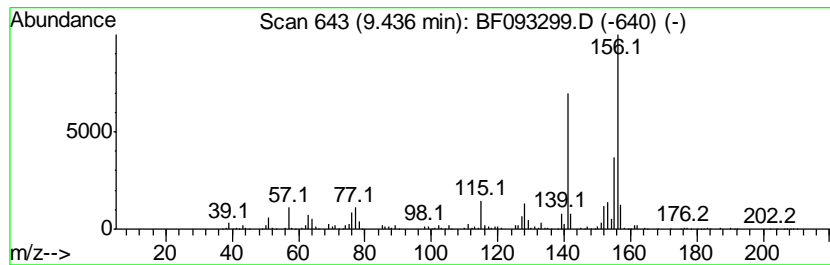
TIC Library : C:\DATABASE\NIST02.L  
 TIC Integration Parameters: LSCINT.P

\*\*\*\*\*  
 Peak Number 15 Naphthalene, 2,6-dimethyl- Concentration Rank 13

R.T.	EstConc	Area	Relative to ISTD	R.T.
9.44	14.23 ng	1942100	Acenaphthene-d10	9.85

Hit#	of	Tentative ID	MW	MolForm	CAS#	Qual
1	5	Naphthalene, 2,6-dimethyl-	156	C12H12	000581-42-0	98
2		Naphthalene, 1,6-dimethyl-	156	C12H12	000575-43-9	97
3		Naphthalene, 1,5-dimethyl-	156	C12H12	000571-61-9	97
4		Naphthalene, 1,7-dimethyl-	156	C12H12	000575-37-1	97
5		Naphthalene, 2,3-dimethyl-	156	C12H12	000581-40-8	97



Data Path : Z:\HPCHEM1\BNA F\DATA\BF030117\  
 Data File : BF093299.D  
 Acq On : 1 Mar 2017 19:47  
 Operator : SJ/MA  
 Sample : I2002-06  
 Misc :  
 ALS Vial : 13 Sample Multiplier: 1

Instrument :  
 BNA\_F  
 ClientSampled :  
 SSP-7(5.5-7.5)

Quant Method : Z:\HPCHEM1\BNA F\METHODS\8270-BF013017.M  
 Quant Title : ASP BNA STANDARDS FOR 5 POINT CALIBRATION

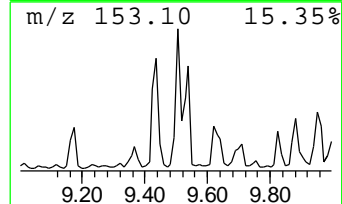
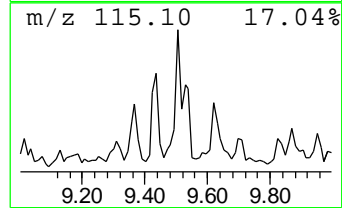
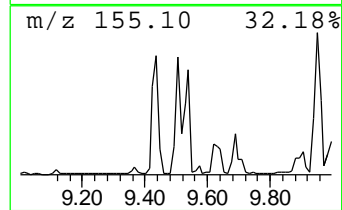
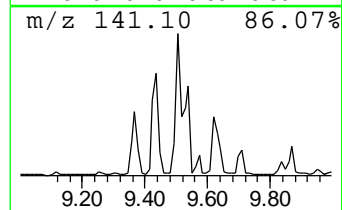
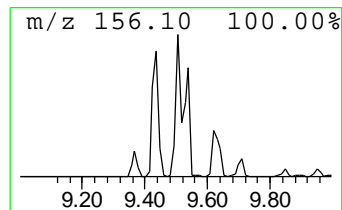
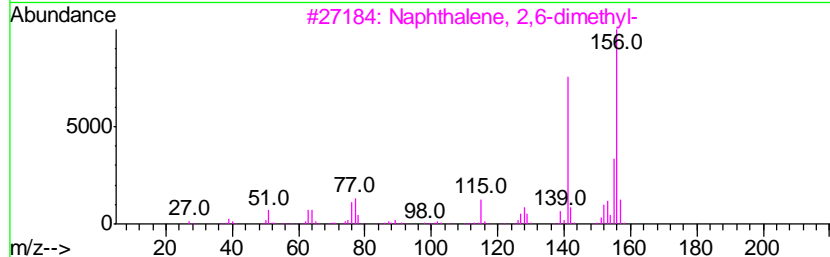
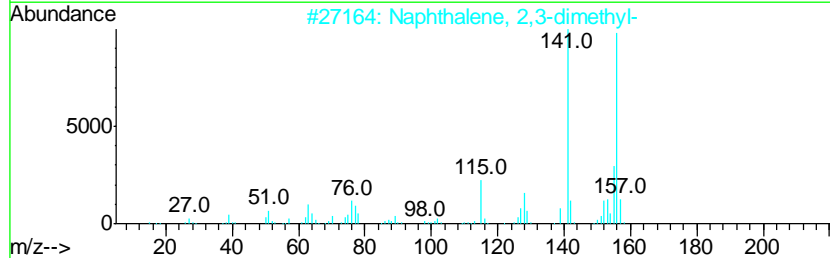
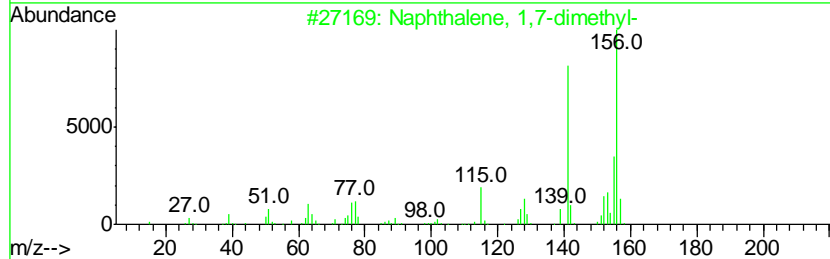
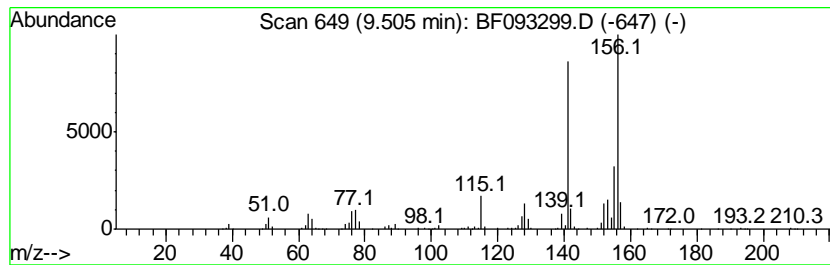
TIC Library : C:\DATABASE\NIST02.L  
 TIC Integration Parameters: LSCINT.P

\*\*\*\*\*  
 Peak Number 16 Naphthalene, 1,7-dimethyl- Concentration Rank 14

R.T.	EstConc	Area	Relative to ISTD	R.T.
9.50	13.50 ng	1842980	Acenaphthene-d10	9.85

Hit#	of	Tentative ID	MW	MolForm	CAS#	Qual
1	5	Naphthalene, 1,7-dimethyl-	156	C12H12	000575-37-1	98
2		Naphthalene, 2,3-dimethyl-	156	C12H12	000581-40-8	97
3		Naphthalene, 2,6-dimethyl-	156	C12H12	000581-42-0	97
4		Naphthalene, 1,5-dimethyl-	156	C12H12	000571-61-9	97
5		Naphthalene, 1,4-dimethyl-	156	C12H12	000571-58-4	97



Data Path : Z:\HPCHEM1\BNA F\DATA\BF030117\  
 Data File : BF093299.D  
 Acq On : 1 Mar 2017 19:47  
 Operator : SJ/MA  
 Sample : I2002-06  
 Misc :  
 ALS Vial : 13 Sample Multiplier: 1

Instrument :  
 BNA\_F  
 ClientSampled :  
 SSP-7(5.5-7.5)

Quant Method : Z:\HPCHEM1\BNA F\METHODS\8270-BF013017.M  
 Quant Title : ASP BNA STANDARDS FOR 5 POINT CALIBRATION

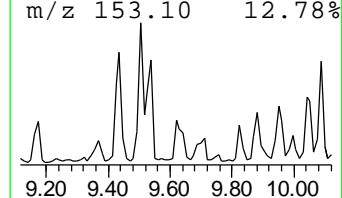
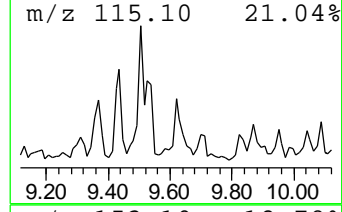
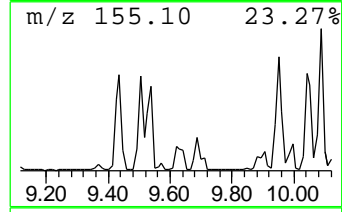
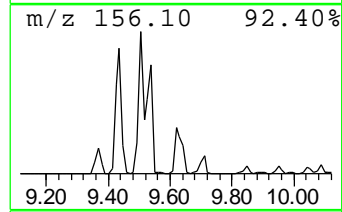
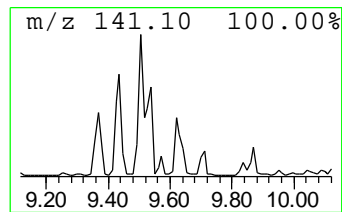
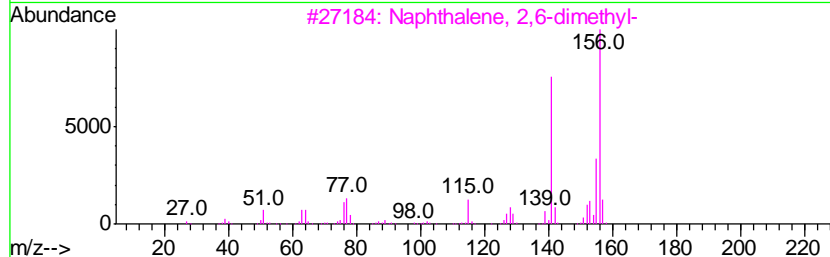
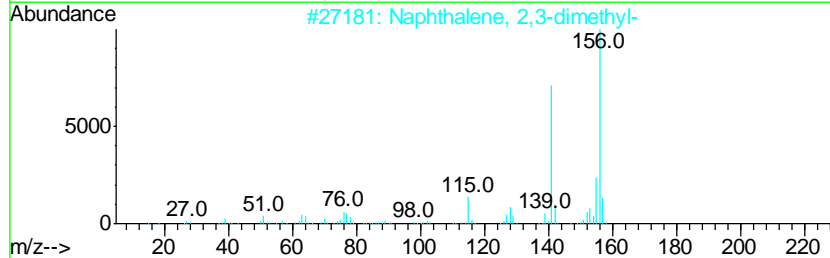
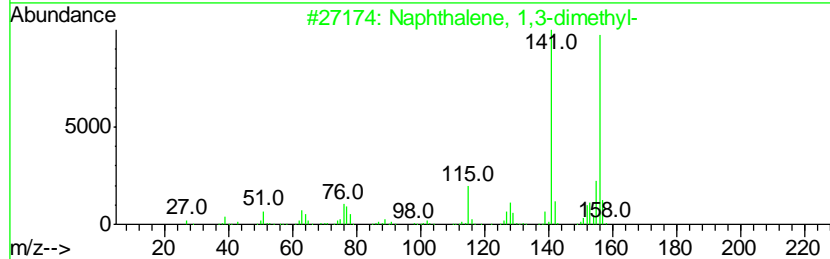
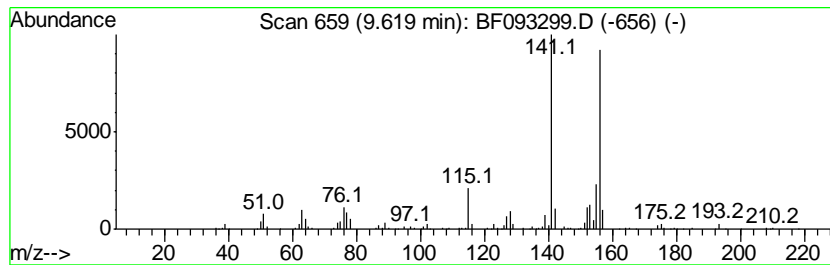
TIC Library : C:\DATABASE\NIST02.L  
 TIC Integration Parameters: LSCINT.P

\*\*\*\*\*  
 Peak Number 17 Naphthalene, 1,3-dimethyl- Concentration Rank 19

R.T.	EstConc	Area	Relative to ISTD	R.T.
9.62	10.67 ng	1456550	Acenaphthene-d10	9.85

Hit#	of	Tentative ID	MW	MolForm	CAS#	Qual
1	5	Naphthalene, 1,3-dimethyl-	156	C12H12	000575-41-7	95
2		Naphthalene, 2,3-dimethyl-	156	C12H12	000581-40-8	94
3		Naphthalene, 2,6-dimethyl-	156	C12H12	000581-42-0	94
4		Naphthalene, 1-ethyl-	156	C12H12	001127-76-0	93
5		Naphthalene, 1,8-dimethyl-	156	C12H12	000569-41-5	93



Data Path : Z:\HPCHEM1\BNA F\DATA\BF030117\  
 Data File : BF093299.D  
 Acq On : 1 Mar 2017 19:47  
 Operator : SJ/MA  
 Sample : I2002-06  
 Misc :  
 ALS Vial : 13 Sample Multiplier: 1

Instrument :  
 BNA\_F  
 ClientSampleId :  
 SSP-7(5.5-7.5)

Quant Method : Z:\HPCHEM1\BNA F\METHODS\8270-BF013017.M  
 Quant Title : ASP BNA STANDARDS FOR 5 POINT CALIBRATION

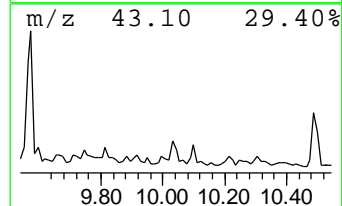
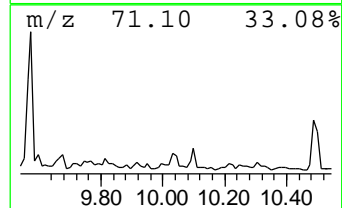
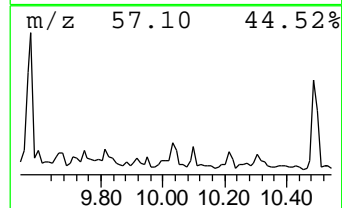
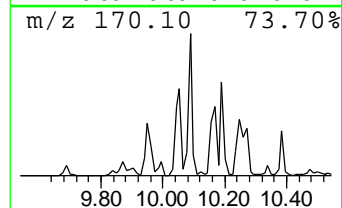
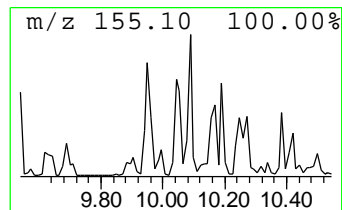
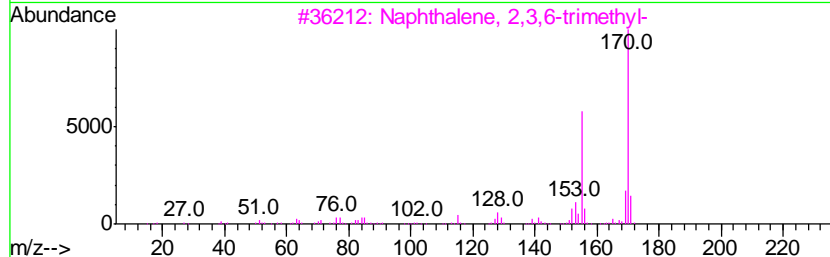
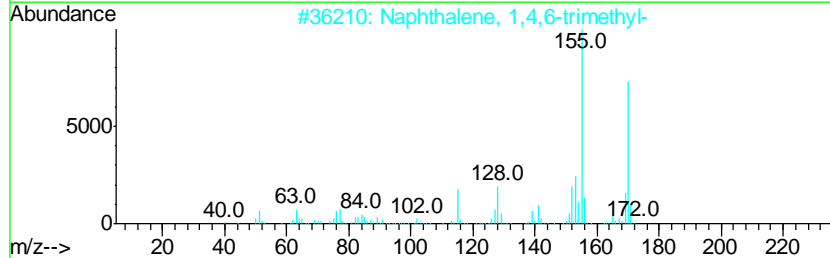
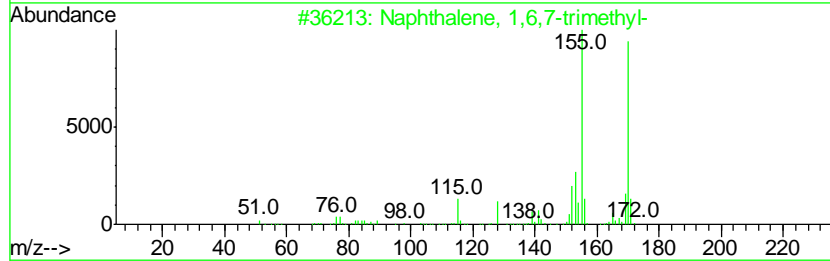
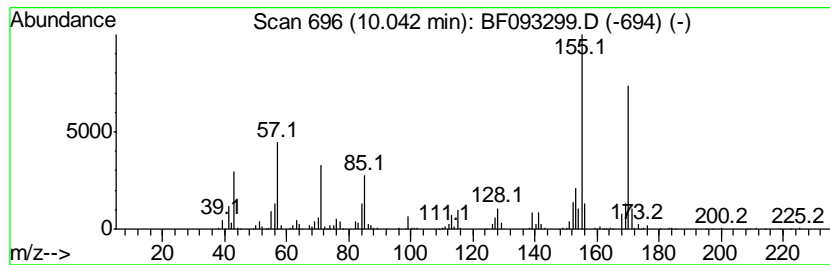
TIC Library : C:\DATABASE\NIST02.L  
 TIC Integration Parameters: LSCINT.P

\*\*\*\*\*  
 Peak Number 18 Naphthalene, 1,6,7-trimethyl- Concentration Rank 18

R.T.	EstConc	Area	Relative to ISTD	R.T.
10.04	11.35 ng	1550120	Acenaphthene-d10	9.85

Hit#	of	Tentative ID	MW	MolForm	CAS#	Qual
1	5	Naphthalene, 1,6,7-trimethyl-	170	C13H14	002245-38-7	97
2		Naphthalene, 1,4,6-trimethyl-	170	C13H14	002131-42-2	95
3		Naphthalene, 2,3,6-trimethyl-	170	C13H14	000829-26-5	91
4		Azulene, 4,6,8-trimethyl-	170	C13H14	000941-81-1	89
5		3-(2-Methyl-propenyl)-1H-indene	170	C13H14	1000187-78-5	87



Data Path : Z:\HPCHEM1\BNA F\DATA\BF030117\  
 Data File : BF093299.D  
 Acq On : 1 Mar 2017 19:47  
 Operator : SJ/MA  
 Sample : I2002-06  
 Misc :  
 ALS Vial : 13 Sample Multiplier: 1

Instrument :  
 BNA\_F  
 ClientSampleID :  
 SSP-7(5.5-7.5)

Quant Method : Z:\HPCHEM1\BNA F\METHODS\8270-BF013017.M  
 Quant Title : ASP BNA STANDARDS FOR 5 POINT CALIBRATION

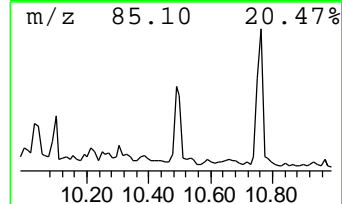
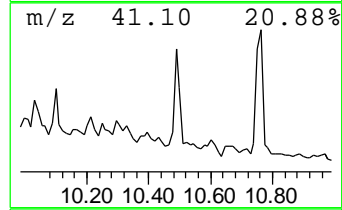
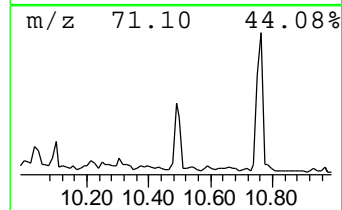
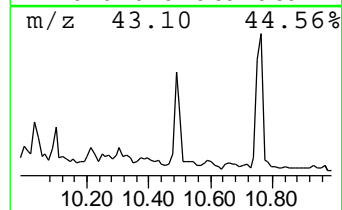
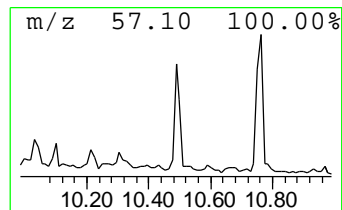
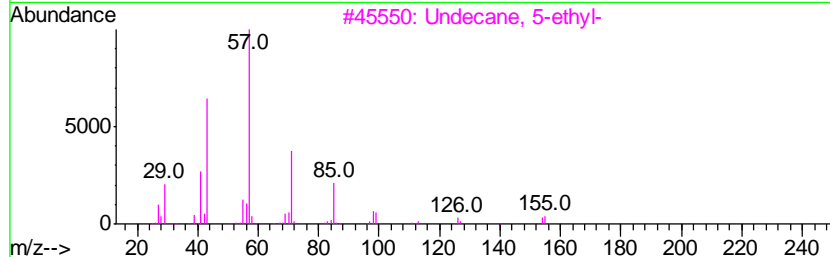
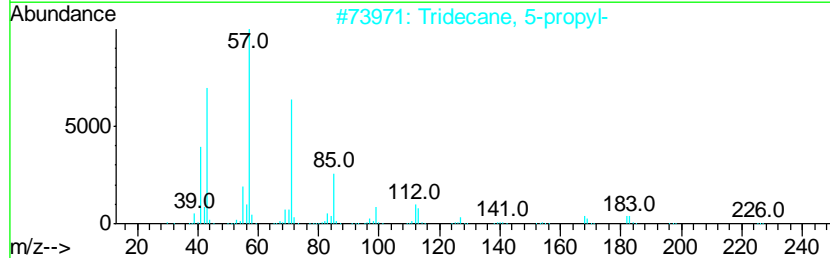
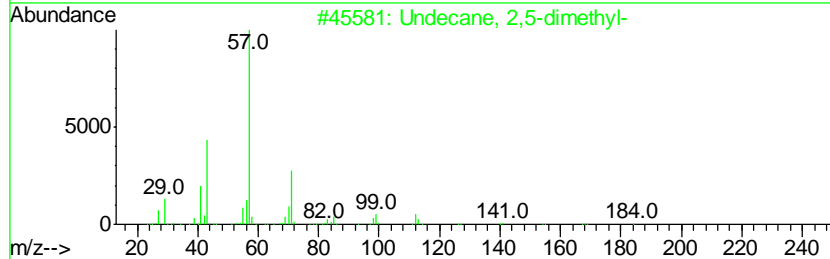
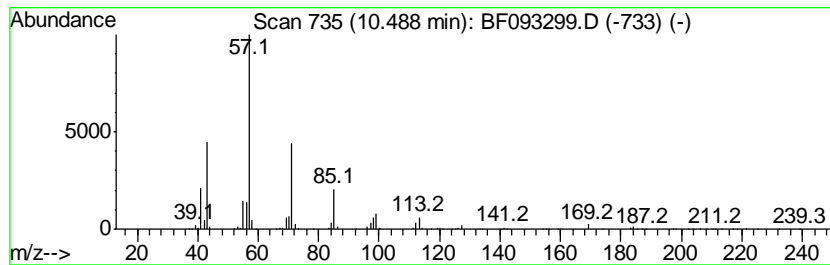
TIC Library : C:\DATABASE\NIST02.L  
 TIC Integration Parameters: LSCINT.P

\*\*\*\*\*  
 Peak Number 19 Undecane, 2,5-dimethyl- Concentration Rank 15

R.T.	EstConc	Area	Relative to ISTD	R.T.
10.49	13.38 ng	1826650	Acenaphthene-d10	9.85

Hit#	of	Tentative ID	MW	MolForm	CAS#	Qual
1	5	Undecane, 2,5-dimethyl-	184	C13H28	017301-22-3	81
2		Tridecane, 5-propyl-	226	C16H34	055045-11-9	78
3		Undecane, 5-ethyl-	184	C13H28	017453-94-0	78
4		Heptadecane, 2,6,10,15-tetramethyl-	296	C21H44	054833-48-6	64
5		Tridecane, 3-methyl-	198	C14H30	006418-41-3	64



Data Path : Z:\HPCHEM1\BNA F\DATA\BF030117\  
 Data File : BF093299.D  
 Acq On : 1 Mar 2017 19:47  
 Operator : SJ/MA  
 Sample : I2002-06  
 Misc :  
 ALS Vial : 13 Sample Multiplier: 1

Instrument :  
 BNA\_F  
 ClientSampleID :  
 SSP-7(5.5-7.5)

Quant Method : Z:\HPCHEM1\BNA F\METHODS\8270-BF013017.M  
 Quant Title : ASP BNA STANDARDS FOR 5 POINT CALIBRATION

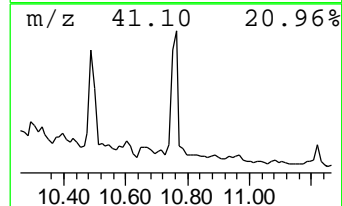
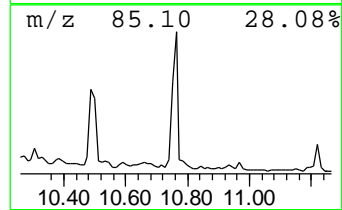
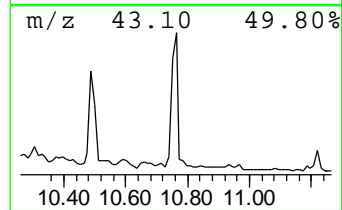
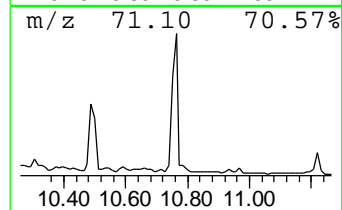
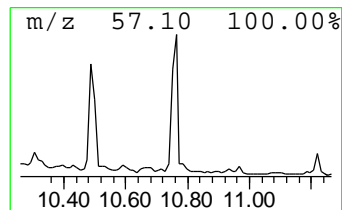
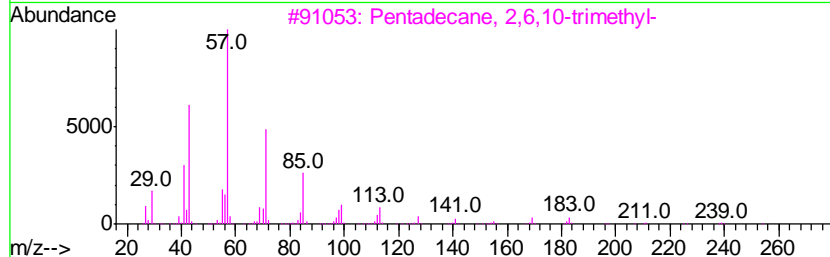
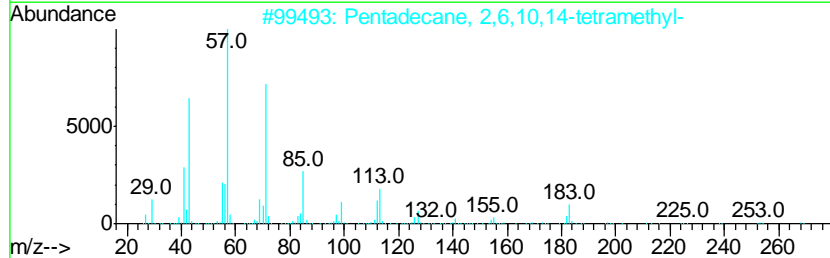
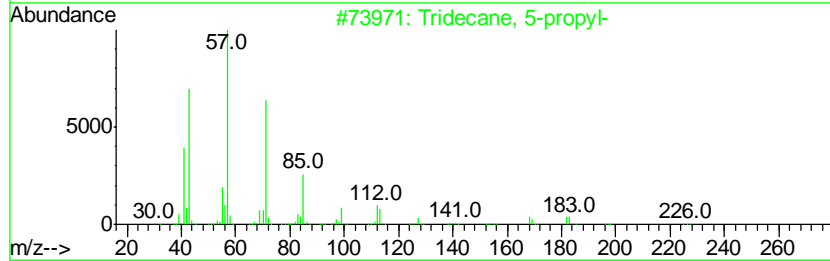
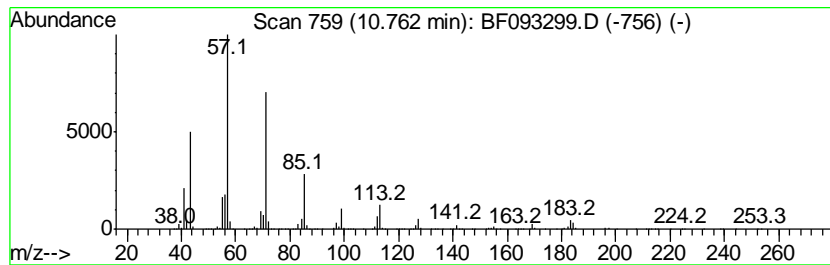
TIC Library : C:\DATABASE\NIST02.L  
 TIC Integration Parameters: LSCINT.P

\*\*\*\*\*  
 Peak Number 20 Tridecane, 5-propyl- Concentration Rank 4

R.T.	EstConc	Area	Relative to ISTD	R.T.
10.76	36.16 ng	2877540	Phenanthrene-d10	11.33

Hit#	of	Tentative ID	MW	MolForm	CAS#	Qual
1	5	Tridecane, 5-propyl-	226	C16H34	055045-11-9	86
2		Pentadecane, 2,6,10,14-tetramethyl-	268	C19H40	001921-70-6	86
3		Pentadecane, 2,6,10-trimethyl-	254	C18H38	003892-00-0	83
4		Dodecane, 2,6,10-trimethyl-	212	C15H32	003891-98-3	78
5		Hexadecane, 2,6,11,15-tetramethyl-	282	C20H42	000504-44-9	64



Data Path : Z:\HPCHEM1\BNA\_F\DATA\BF030117\  
 Data File : BF093299.D  
 Acq On : 1 Mar 2017 19:47  
 Operator : SJ/MA  
 Sample : I2002-06  
 Misc :  
 ALS Vial : 13 Sample Multiplier: 1

Instrument :  
 BNA\_F  
 ClientSampleId :  
 SSP-7(5.5-7.5)

Quant Method : Z:\HPCHEM1\BNA\_F\METHODS\8270-BF013017.M  
 Quant Title : ASP BNA STANDARDS FOR 5 POINT CALIBRATION

TIC Library : C:\DATABASE\NIST02.L  
 TIC Integration Parameters: LSCINT.P

TIC Top Hit name	RT	EstConc	Units	Response	--Internal Standard--			
					#	RT	Resp	Conc
2-Pentanone, 4-hy...	4.96	17.1	ng	1232570	1	6.81	1437530	20.0
unknown6.58	6.58	42.0	ng	3017080	1	6.81	1437530	20.0
Octane, 2,4,6-tri...	7.52	10.2	ng	794094	2	8.10	1554600	20.0
Benzene, 1,2,3,4-...	7.58	15.9	ng	1233650	2	8.10	1554600	20.0
n-Amylcyclohexane	7.71	19.1	ng	1483820	2	8.10	1554600	20.0
Undecane, 2,6-dim...	8.16	22.9	ng	1781440	2	8.10	1554600	20.0
Cyclohexane, (4-m...	8.38	27.9	ng	2170400	2	8.10	1554600	20.0
Decane, 2,6,7-tri...	8.52	46.8	ng	3640820	2	8.10	1554600	20.0
Cyclopentane, (2-...	8.64	12.1	ng	937321	2	8.10	1554600	20.0
unknown8.75	8.75	16.1	ng	1250560	2	8.10	1554600	20.0
Decane, 3,6-dimet...	9.12	21.1	ng	2873670	3	9.85	2730380	20.0
Decane	9.25	13.2	ng	1800110	3	9.85	2730380	20.0
Naphthalene, 2,6-...	9.44	14.2	ng	1942100	3	9.85	2730380	20.0
Naphthalene, 1,7-...	9.50	13.5	ng	1842980	3	9.85	2730380	20.0
Naphthalene, 1,3-...	9.62	10.7	ng	1456550	3	9.85	2730380	20.0
Naphthalene, 1,6,...	10.04	11.4	ng	1550120	3	9.85	2730380	20.0
Undecane, 2,5-dim...	10.49	13.4	ng	1826650	3	9.85	2730380	20.0
Tridecane, 5-propyl-	10.76	36.2	ng	2877540	4	11.33	1591530	20.0