

Data Path : Z:\HPCHEM1\BNA_F\DATA\BF030217\
 Data File : BF093318.D
 Acq On : 2 Mar 2017 12:52
 Operator : SJ/MA
 Sample : I2006-09
 Misc :
 ALS Vial : 6 Sample Multiplier: 1

Instrument :
 BNA_F
 ClientSampleId :
 CPSIDW-1

Quant Time: Mar 03 00:10:28 2017
 Quant Method : Z:\HPCHEM1\BNA_F\METHODS\8270-BF013017.M
 Quant Title : ASP BNA STANDARDS FOR 5 POINT CALIBRATION
 QLast Update : Fri Feb 17 17:31:55 2017
 Response via : Initial Calibration

Internal Standards	R.T.	QIon	Response	Conc	Units	Dev(Min)
1) 1,4-Dichlorobenzene-d4	6.80	152	150364	20.00	ng	-0.06
21) Naphthalene-d8	8.09	136	561613	20.00	ng	-0.06
38) Acenaphthene-d10	9.85	164	263612	20.00	ng	-0.05
63) Phenanthrene-d10	11.34	188	516378	20.00	ng	-0.03
75) Chrysene-d12	13.97	240	482582	20.00	ng	-0.05
86) Perylene-d12	15.40	264	446873	20.00	ng	-0.05

System Monitoring Compounds

5) 2-Fluorophenol	5.40	112	1200898	137.02	ng	-0.05
7) Phenol-d6	6.44	99	1370572	121.54	ng	-0.05
23) Nitrobenzene-d5	7.37	82	1013523	100.50	ng	-0.06
41) 2,4,6-Tribromophenol	10.65	330	319034	167.33	ng	-0.03
44) 2-Fluorobiphenyl	9.17	172	1587627	109.11	ng	-0.05
78) Terphenyl-d14	12.93	244	1722612	83.87	ng	-0.03

Target Compounds

Target Compounds	R.T.	QIon	Response	Conc	Units	Qvalue
2) 1,4-Dioxane	2.38	88	258	0.05	ng	# 1
3) Pyridine	2.96	79	212	0.02	ng	# 1
4) n-Nitrosodimethylamine	3.08	42	375	0.07	ng	# 1
6) Aniline	6.57	93	1803	0.12	ng	# 1
8) 2-Chlorophenol	6.58	128	241	0.02	ng	# 1
9) Benzaldehyde	6.44	77	1997	0.25	ng	# 1
10) Phenol	6.45	94	1092	0.08	ng	# 1
11) bis(2-Chloroethyl)ether	6.57	93	1803	0.17	ng	# 1
12) 1,3-Dichlorobenzene	6.96	146	763	0.07	ng	# 1
13) 1,4-Dichlorobenzene	6.96	146	763	0.07	ng	# 1
14) 1,2-Dichlorobenzene	6.96	146	763	0.07	ng	# 1
15) Benzyl Alcohol	6.96	79	17211	2.06	ng	# 19
16) 2,2'-oxybis(1-Chloropropan	7.14	45	1973	0.11	ng	# 67
18) Hexachloroethane	7.37	117	2580	0.66	ng	# 1
19) n-Nitroso-di-n-propylamine	7.37	70	133761	18.63	ng	# 82
22) Acetophenone	7.20	105	1290	0.10	ng	# 80
24) Nitrobenzene	7.37	77	3467	0.33	ng	# 36
25) Isophorone	7.37	82	852748	45.38	ng	# 65
31) Naphthalene	8.11	128	124080	4.36	ng	# 98
33) 4-Chloroaniline	8.11	127	16405	1.47	ng	# 36
37) 2-Methylnaphthalene	8.81	142	14917	0.82	ng	# 95
45) 1,1'-Biphenyl	9.28	154	6044	0.32	ng	# 89
47) 2-Nitroaniline	9.17	65	2875	0.57	ng	# 4
48) Acenaphthylene	9.71	152	409	0.02	ng	# 59
50) 2,6-Dinitrotoluene	9.85	165	34062	8.88	ng	# 31
51) Acenaphthene	9.88	154	7042	0.46	ng	# 90
54) Dibenzofuran	10.06	168	4020	0.19	ng	# 97
55) 4-Nitrophenol	10.06	139	1622	0.51	ng	# 4
56) 2,4-Dinitrotoluene	9.85	165	34063	6.67	ng	# 20
57) Fluorene	10.41	166	4314	0.27	ng	# 86
59) Diethylphthalate	10.27	149	31587	1.89	ng	# 98
62) Azobenzene	10.57	77	234	0.01	ng	# 1
64) 4,6-Dinitro-2-methylphenol	10.65	198	477	2.81	ng	# 1
65) n-Nitrosodiphenylamine	10.65	169	11066	0.67	ng	# 43

Data Path : Z:\HPCHEM1\BNA_F\DATA\BF030217\
 Data File : BF093318.D
 Acq On : 2 Mar 2017 12:52
 Operator : SJ/MA
 Sample : I2006-09
 Misc :
 ALS Vial : 6 Sample Multiplier: 1

Instrument :
 BNA_F
 ClientSampleId :
 CPSIDW-1

Quant Time: Mar 03 00:10:28 2017
 Quant Method : Z:\HPCHEM1\BNA_F\METHODS\8270-BF013017.M
 Quant Title : ASP BNA STANDARDS FOR 5 POINT CALIBRATION
 QLast Update : Fri Feb 17 17:31:55 2017
 Response via : Initial Calibration

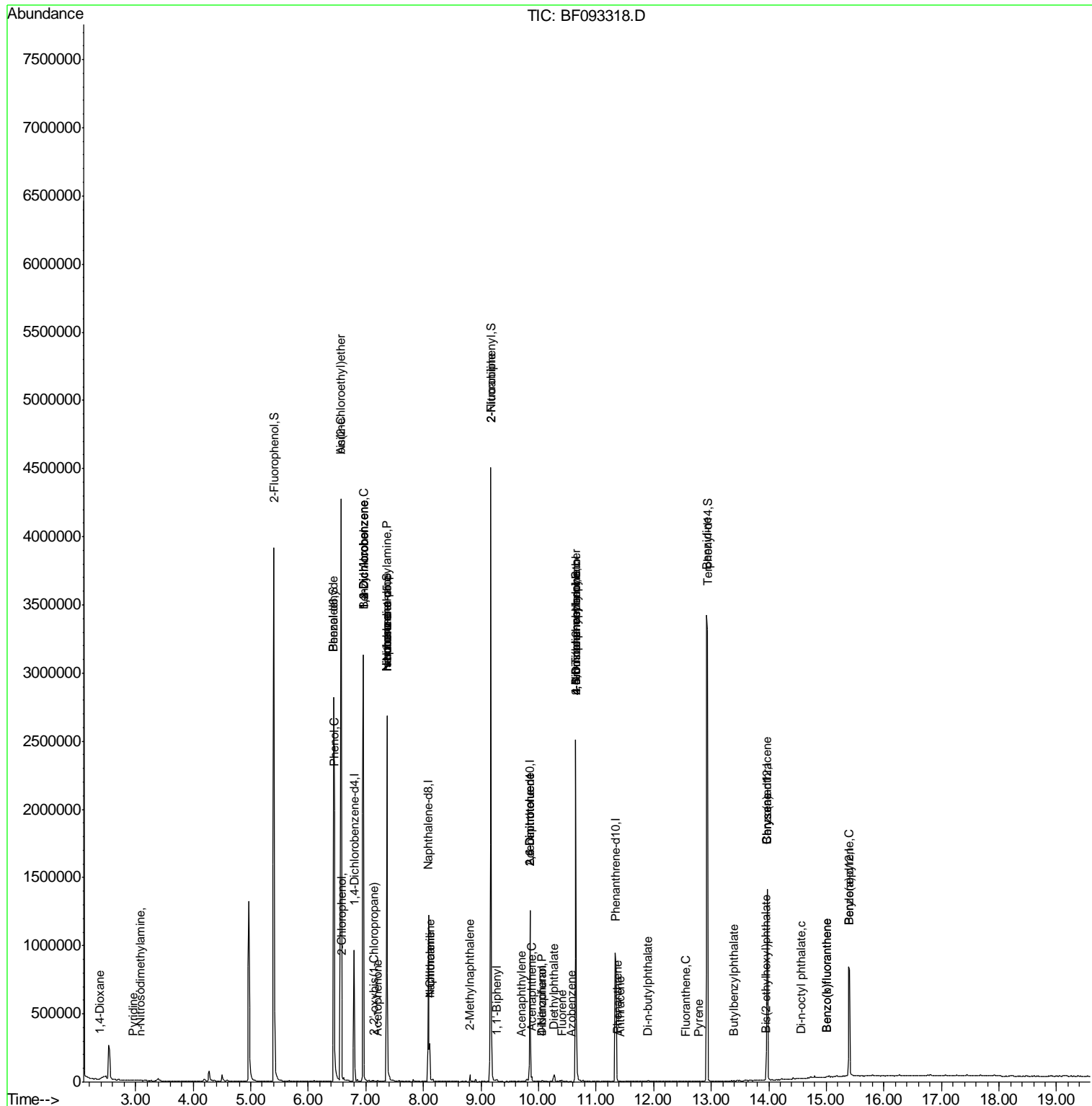
Internal Standards	R.T.	QIon	Response	Conc	Units	Dev(Min)
66) 4-Bromophenyl-phenylether	10.65	248	22568	4.18	ng	# 1
70) Phenanthrene	11.37	178	5773	0.20	ng	94
71) Anthracene	11.42	178	617	0.02	ng	# 59
73) Di-n-butylphthalate	11.90	149	5427	0.18	ng	# 94
74) Fluoranthene	12.56	202	684	0.02	ng	61
76) Benzidine	12.92	184	22228	1.08	ng	99
77) Pyrene	12.78	202	530	0.01	ng	# 56
79) Butylbenzylphthalate	13.39	149	466	0.03	ng	# 83
80) Benzo(a)anthracene	13.97	228	2198	0.07	ng	# 62
82) Chrysene	13.97	228	2198	0.08	ng	# 58
83) Bis(2-ethylhexyl)phthalate	13.95	149	5339	0.27	ng	# 88
84) Di-n-octyl phthalate	14.56	149	3636	0.11	ng	# 21
87) Benzo(b)fluoranthene	15.00	252	648	0.02	ng	# 58
88) Benzo(k)fluoranthene	15.00	252	648	0.03	ng	# 58
89) Benzo(a)pyrene	15.40	252	1439	0.06	ng	# 53

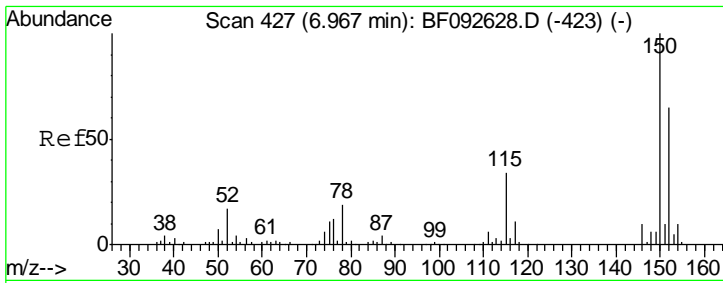
(#) = qualifier out of range (m) = manual integration (+) = signals summed

Data Path : Z:\HPCHEM1\BNA_F\DATA\BF030217\
 Data File : BF093318.D
 Acq On : 2 Mar 2017 12:52
 Operator : SJ/MA
 Sample : I2006-09
 Misc :
 ALS Vial : 6 Sample Multiplier: 1

Instrument :
 BNA_F
 ClientSampled :
 CPSIDW-1

Quant Time: Mar 03 00:10:28 2017
 Quant Method : Z:\HPCHEM1\BNA_F\METHODS\8270-BF013017.M
 Quant Title : ASP BNA STANDARDS FOR 5 POINT CALIBRATION
 QLast Update : Fri Feb 17 17:31:55 2017
 Response via : Initial Calibration

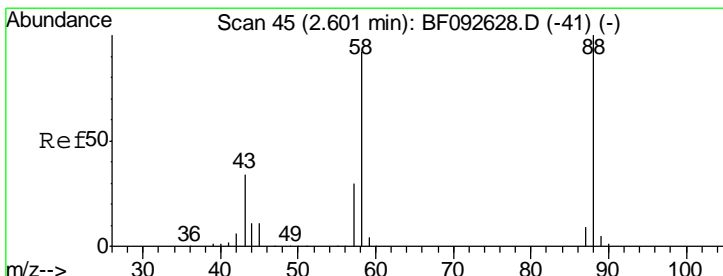
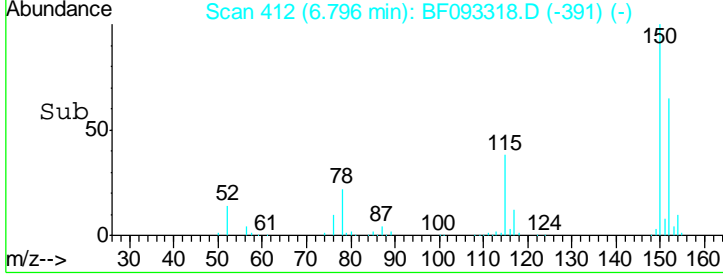
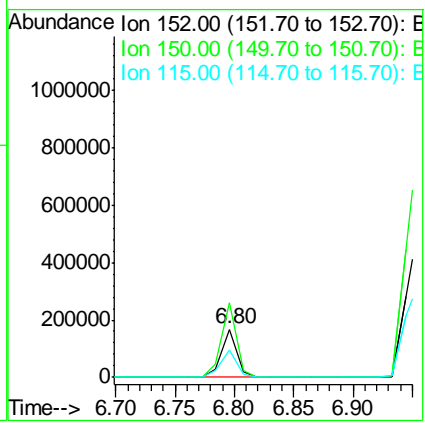
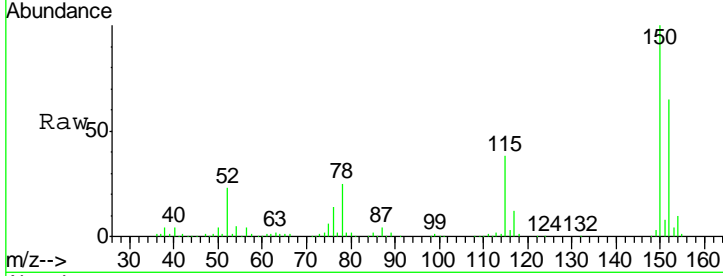




#1
 1,4-Dichlorobenzene-d4
 Concen: 20.00 ng
 RT: 6.80 min Scan# 412
 Delta R.T. -0.06 min
 Lab File: BF093318.D
 Acq: 2 Mar 2017 12:52

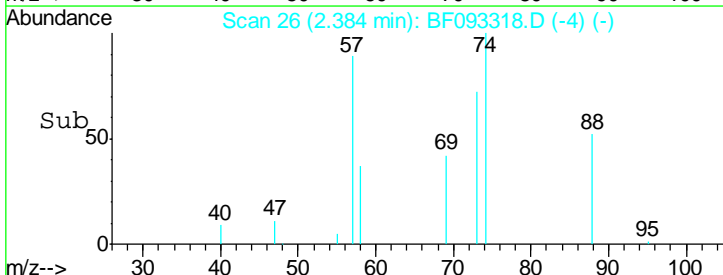
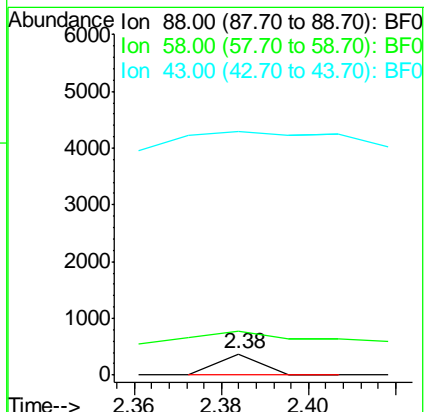
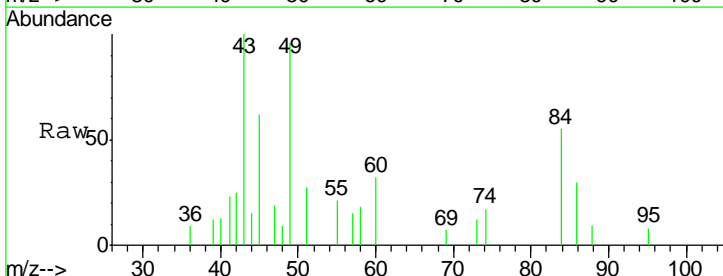
Instrument :
 BNA_F
ClientSampled :
 CPSIDW-1

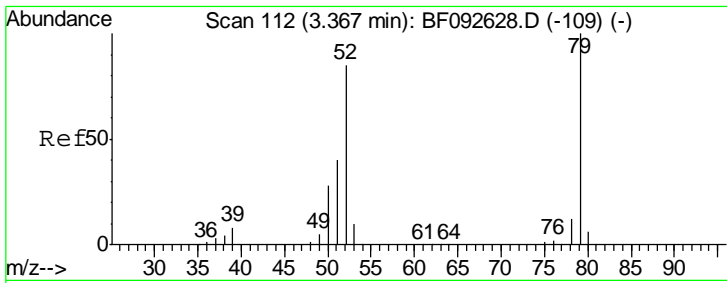
Tgt Ion	Resp	Lower	Upper
152	100		
150	153.6	124.9	187.3
115	57.9	46.0	69.0



#2
 1,4-Dioxane
 Concen: 0.05 ng
 RT: 2.38 min Scan# 26
 Delta R.T. -0.05 min
 Lab File: BF093318.D
 Acq: 2 Mar 2017 12:52

Tgt Ion	Resp	Lower	Upper
88	100		
58	314.3	57.8	86.8#
43	0.0	22.3	33.5#

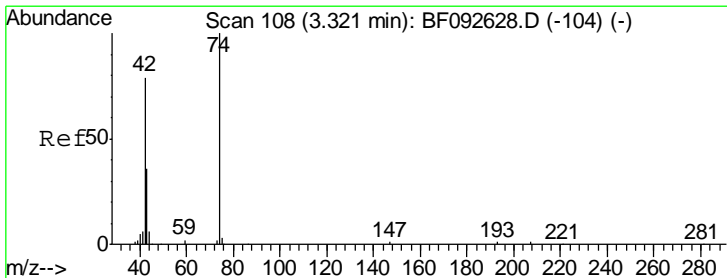
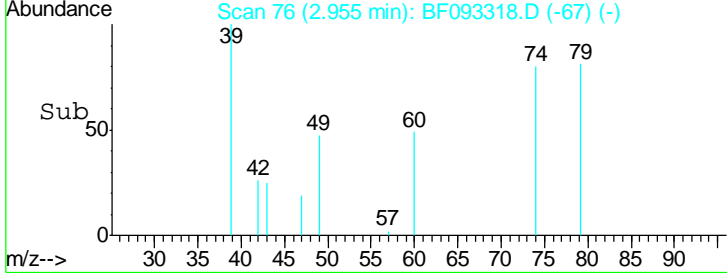
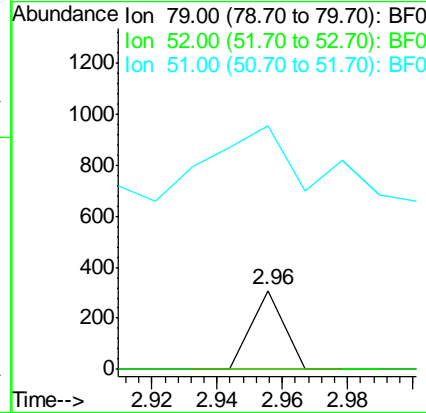
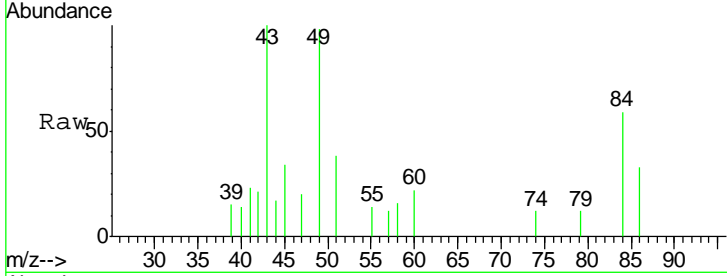




#3
 Pyridine
 Concen: 0.02 ng
 RT: 2.96 min Scan# 76
 Delta R.T. -0.19 min
 Lab File: BF093318.D
 Acq: 2 Mar 2017 12:52

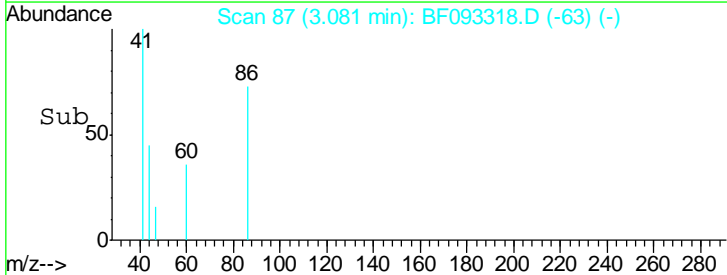
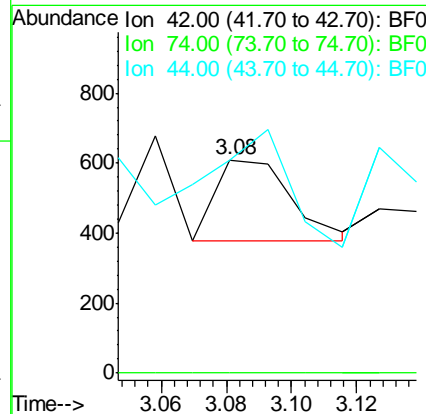
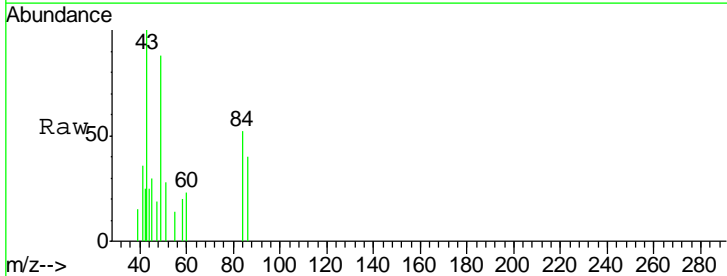
Instrument :
 BNA_F
 ClientSampled :
 CPSIDW-1

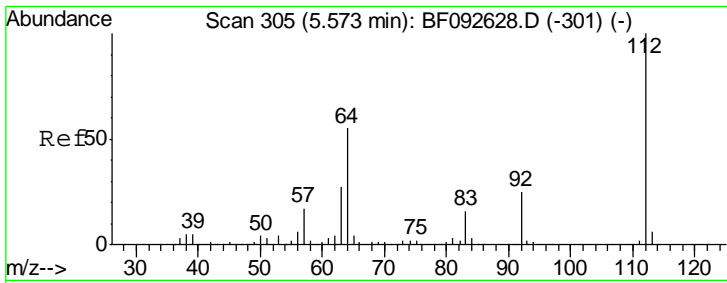
Tgt Ion	Resp	Lower	Upper
79	212		
79	100		
52	0.0	57.1	85.7#
51	309.1	27.3	40.9#



#4
 n-Nitrosodimethylamine
 Concen: 0.07 ng
 RT: 3.08 min Scan# 87
 Delta R.T. -0.02 min
 Lab File: BF093318.D
 Acq: 2 Mar 2017 12:52

Tgt Ion	Resp	Lower	Upper
42	375		
42	100		
74	0.0	117.0	175.4#
44	100.0	5.5	8.3#



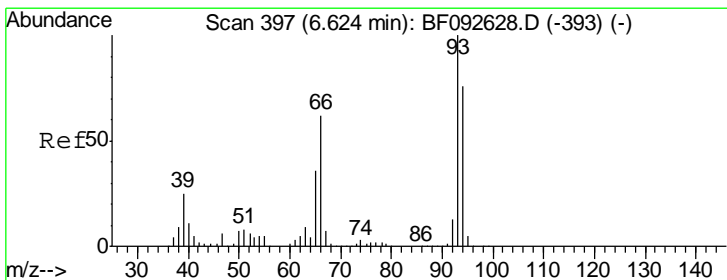
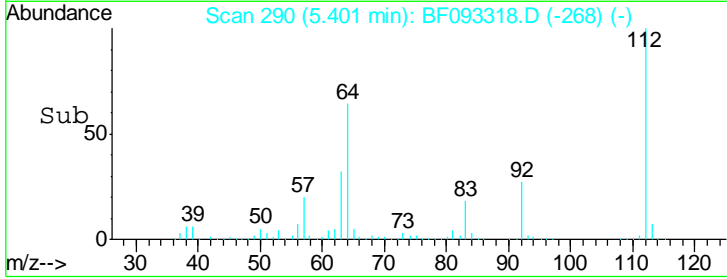
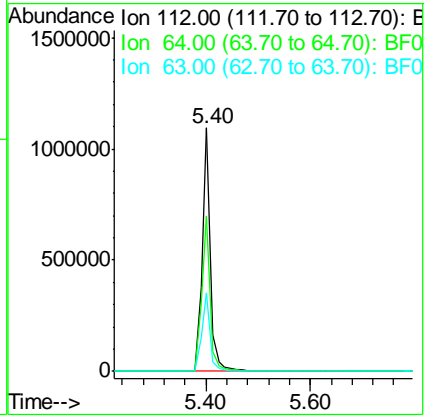
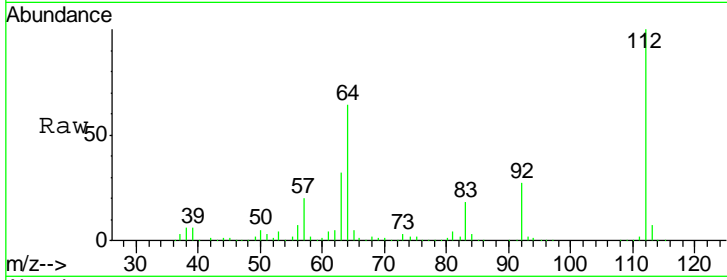


#5
 2-Fluorophenol
 Concen: 137.02 ng
 RT: 5.40 min Scan# 290
 Delta R.T. -0.05 min
 Lab File: BF093318.D
 Acq: 2 Mar 2017 12:52

Instrument :
 BNA_F
ClientSampled :
 CPSIDW-1

Tgt Ion: 112 Resp: 1200898

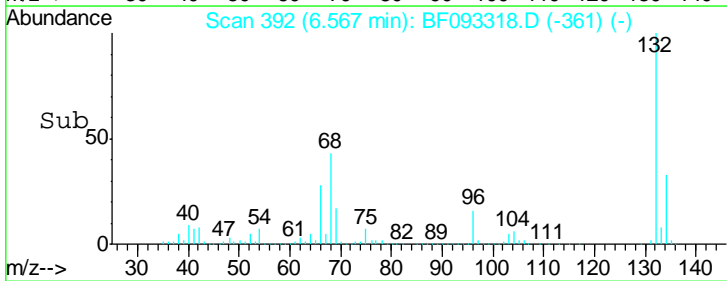
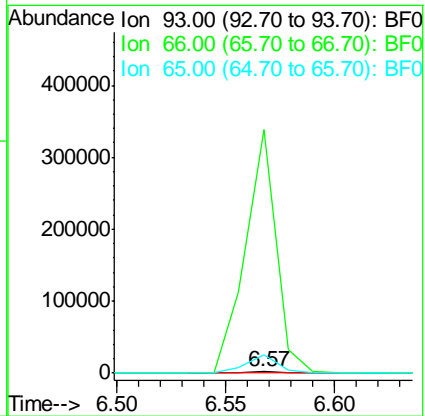
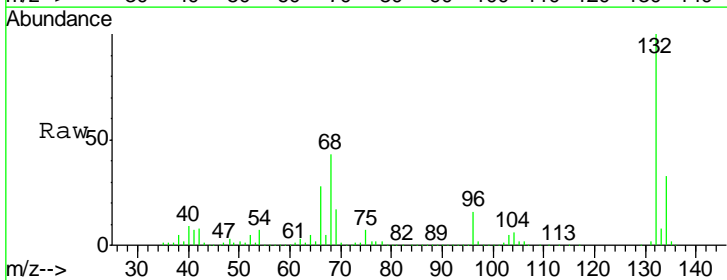
Ion	Ratio	Lower	Upper
112	100		
64	63.6	46.1	69.1
63	32.5	23.8	35.6

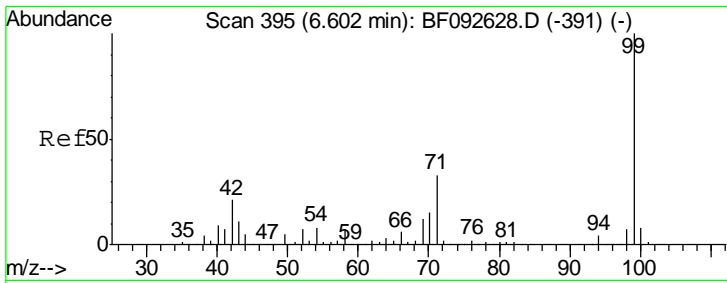


#6
 Aniline
 Concen: 0.12 ng
 RT: 6.57 min Scan# 392
 Delta R.T. 0.06 min
 Lab File: BF093318.D
 Acq: 2 Mar 2017 12:52

Tgt Ion: 93 Resp: 1803

Ion	Ratio	Lower	Upper
93	100		
66	18646.4	76.2	114.2#
65	1422.4	49.3	73.9#



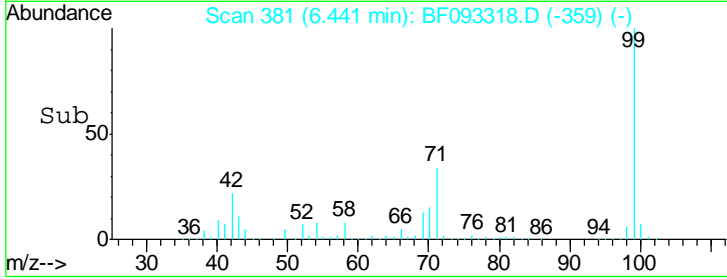
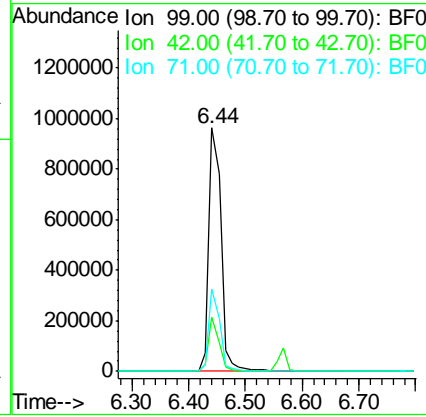
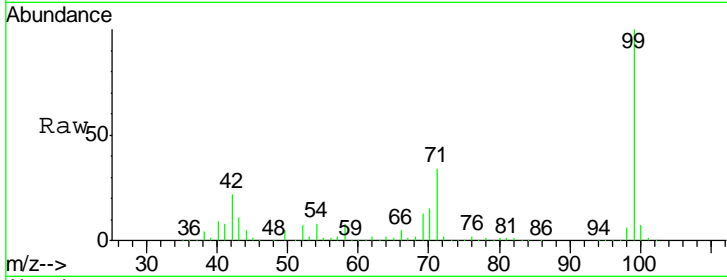


#7
 Phenol-d6
 Concen: 121.54 ng
 RT: 6.44 min Scan# 381
 Delta R.T. -0.05 min
 Lab File: BF093318.D
 Acq: 2 Mar 2017 12:52

Instrument :
 BNA_F
ClientSampled :
 CPSIDW-1

Tgt Ion: 99 Resp: 1370572

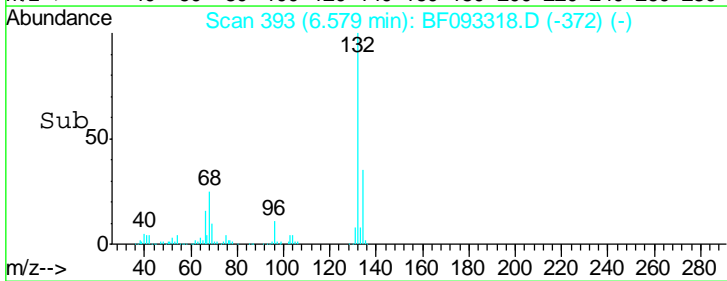
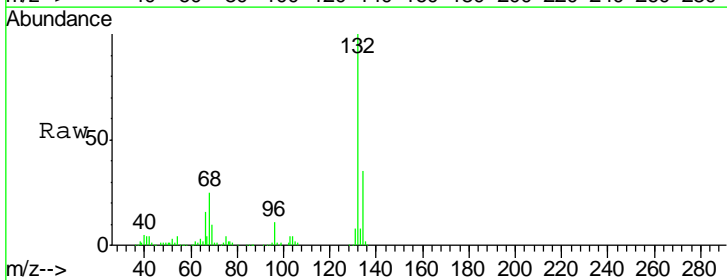
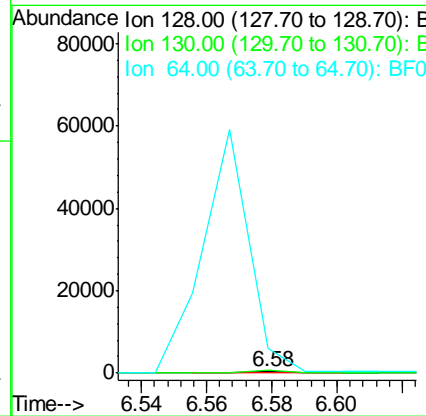
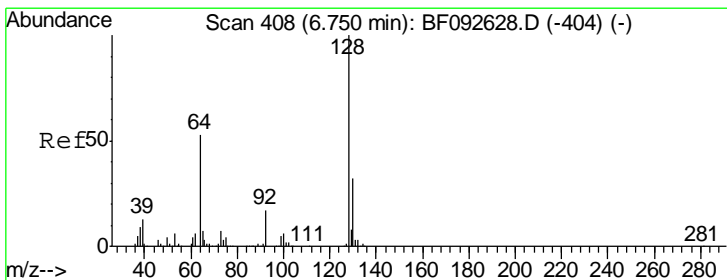
Ion	Ratio	Lower	Upper
99	100		
42	22.2	15.6	23.4
71	33.6	27.5	41.3

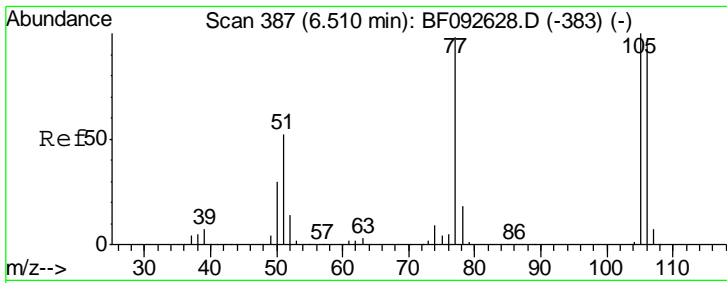


#8
 2-Chlorophenol
 Concen: 0.02 ng
 RT: 6.58 min Scan# 393
 Delta R.T. -0.06 min
 Lab File: BF093318.D
 Acq: 2 Mar 2017 12:52

Tgt Ion: 128 Resp: 241

Ion	Ratio	Lower	Upper
128	100		
130	172.2	12.3	52.3#
64	1679.0	32.2	72.2#

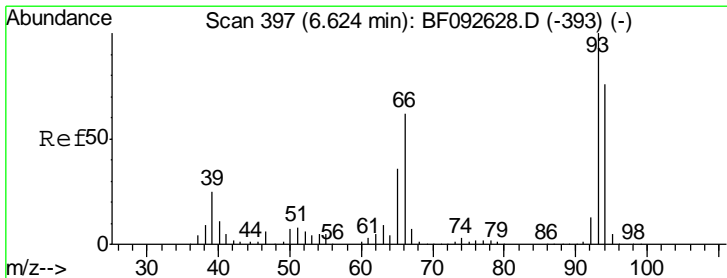
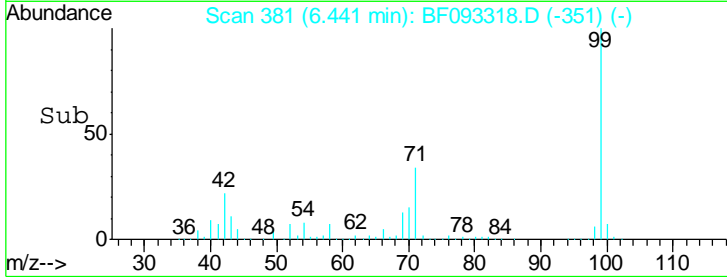
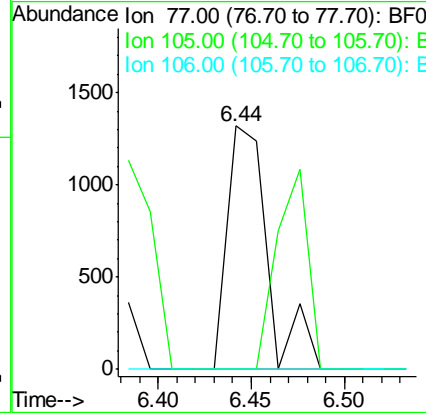
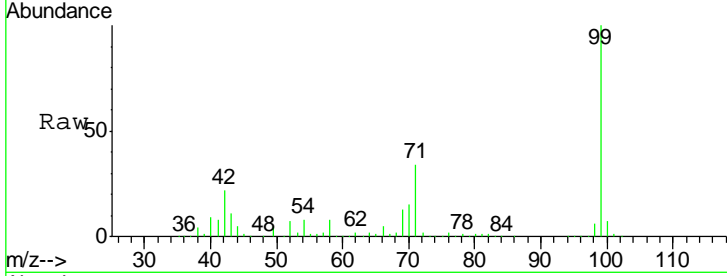




#9
Benzaldehyde
Concen: 0.25 ng
RT: 6.44 min Scan# 381
Delta R.T. 0.05 min
Lab File: BF093318.D
Acq: 2 Mar 2017 12:52

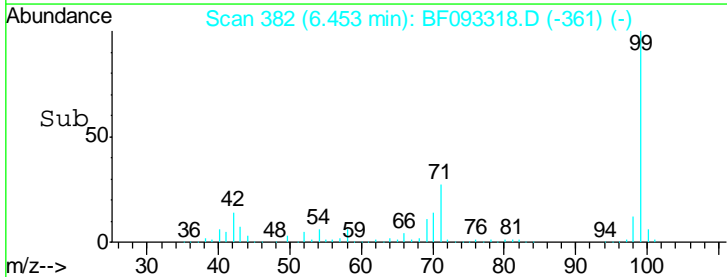
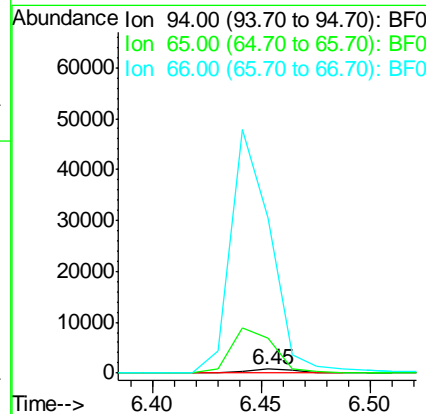
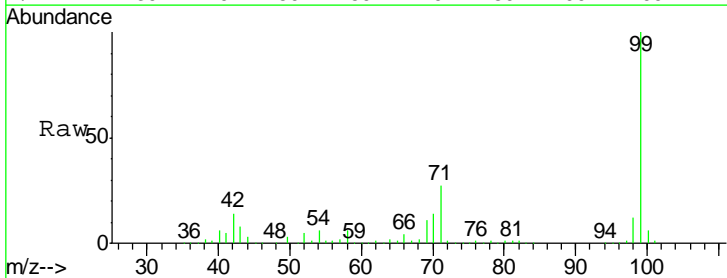
Instrument :
BNA_F
ClientSampled :
CPSIDW-1

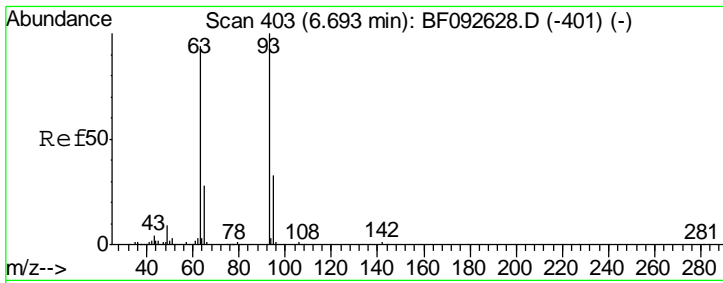
Tgt Ion	Resp	Lower	Upper
77	100		
105	0.0	83.9	123.9#
106	0.0	77.6	117.6#



#10
Phenol
Concen: 0.08 ng
RT: 6.45 min Scan# 382
Delta R.T. -0.06 min
Lab File: BF093318.D
Acq: 2 Mar 2017 12:52

Tgt Ion	Resp	Lower	Upper
94	100		
65	945.9	21.4	61.4#
66	4256.6	44.0	84.0#

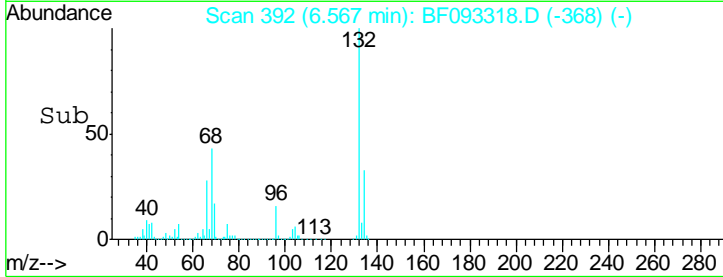
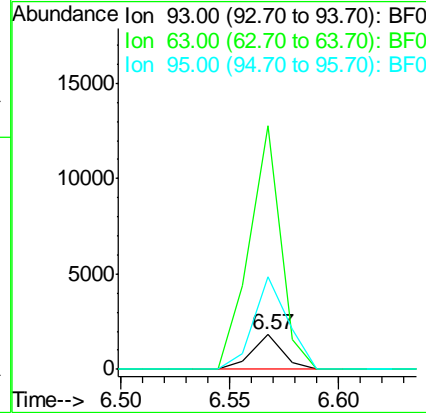
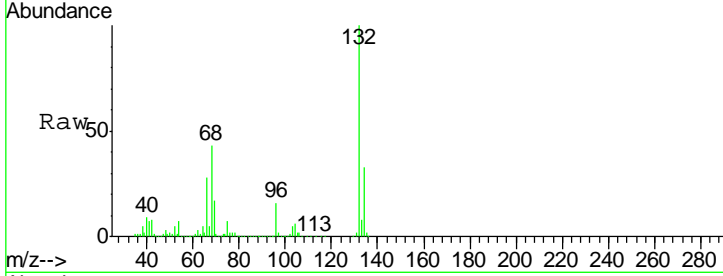




#11
 bis(2-Chloroethyl)ether
 Concen: 0.17 ng
 RT: 6.57 min Scan# 392
 Delta R.T. -0.02 min
 Lab File: BF093318.D
 Acq: 2 Mar 2017 12:52

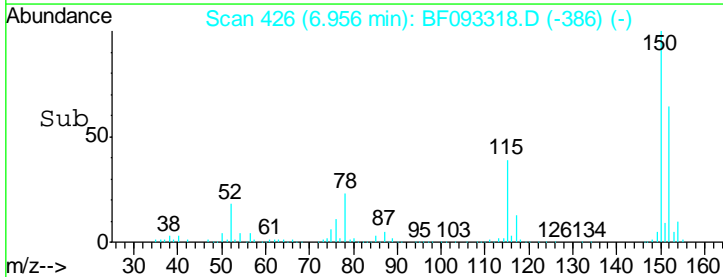
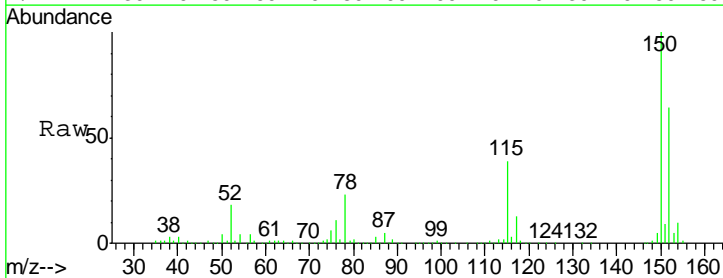
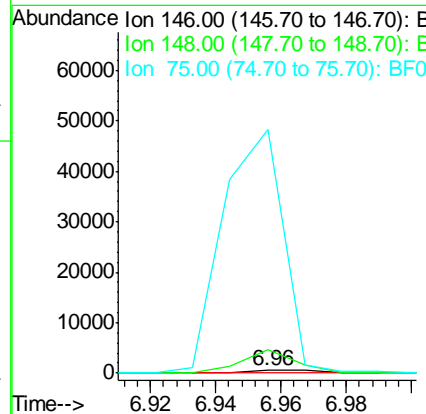
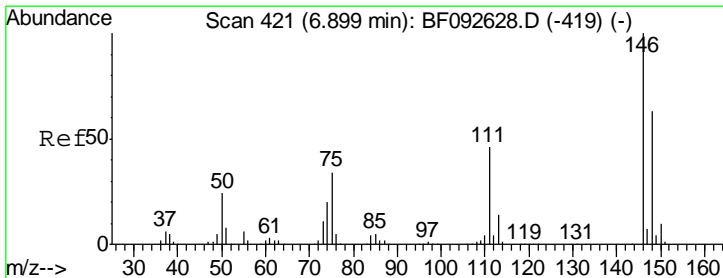
Instrument :
 BNA_F
ClientSampled :
 CPSIDW-1

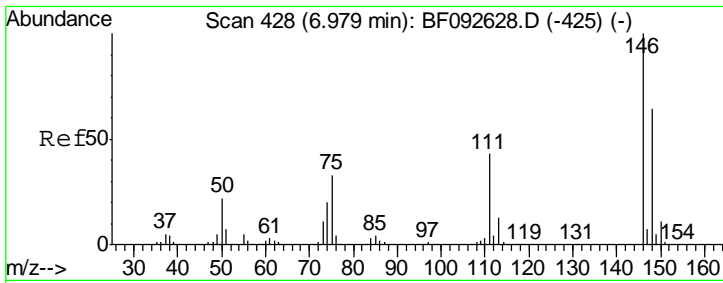
Tgt Ion	Resp	Lower	Upper
93	1803		
93	100		
63	703.5	60.4	100.4#
95	267.3	12.8	52.8#



#12
 1,3-Dichlorobenzene
 Concen: 0.07 ng
 RT: 6.96 min Scan# 426
 Delta R.T. 0.16 min
 Lab File: BF093318.D
 Acq: 2 Mar 2017 12:52

Tgt Ion	Resp	Lower	Upper
146	763		
146	100		
148	806.2	53.4	80.0#
75	8308.4	18.5	27.7#

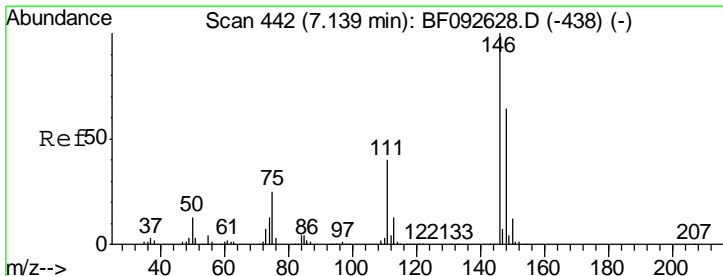
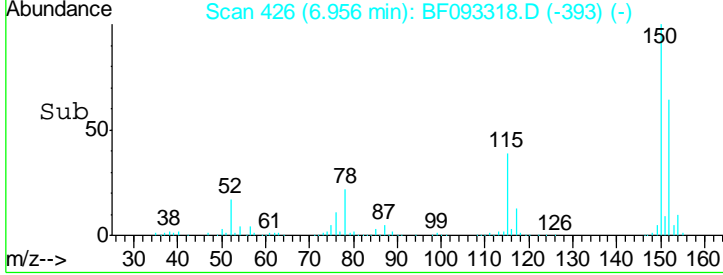
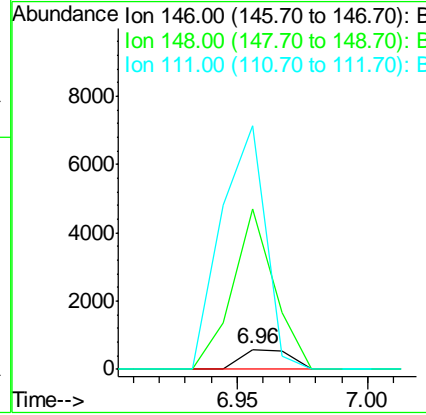
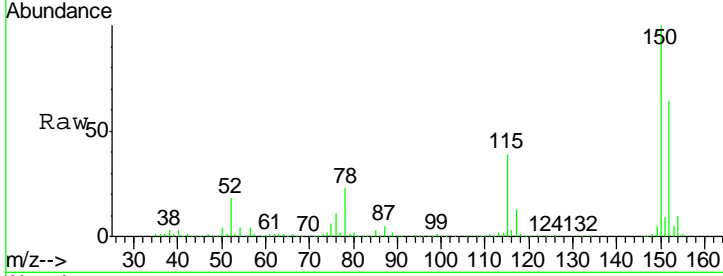




#13
 1,4-Dichlorobenzene
 Concen: 0.07 ng
 RT: 6.96 min Scan# 426
 Delta R.T. 0.08 min
 Lab File: BF093318.D
 Acq: 2 Mar 2017 12:52

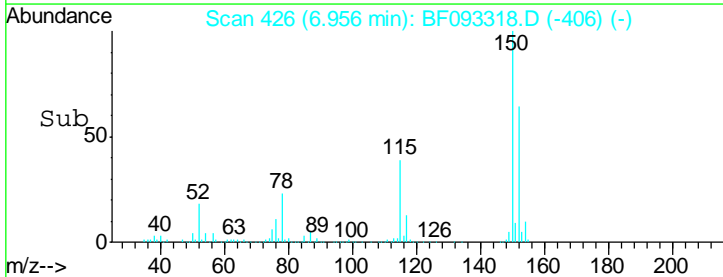
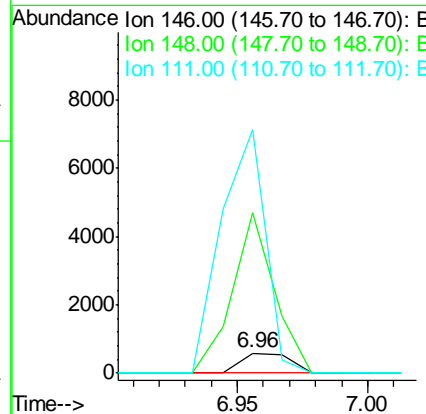
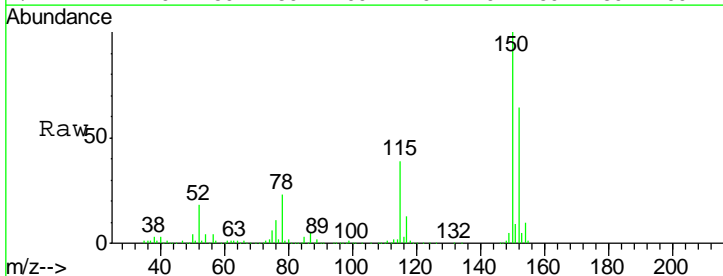
Instrument :
 BNA_F
 ClientSampleID :
 CPSIDW-1

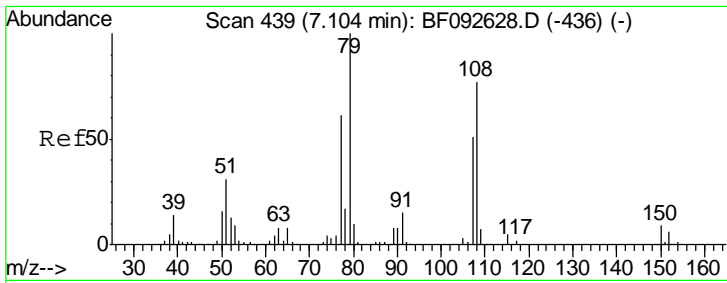
Tgt Ion	Resp	Lower	Upper
146	100		
148	806.2	50.6	76.0#
111	1227.4	36.2	54.4#



#14
 1,2-Dichlorobenzene
 Concen: 0.07 ng
 RT: 6.96 min Scan# 426
 Delta R.T. -0.07 min
 Lab File: BF093318.D
 Acq: 2 Mar 2017 12:52

Tgt Ion	Resp	Lower	Upper
146	100		
148	806.2	52.2	78.2#
111	1227.4	36.2	54.2#

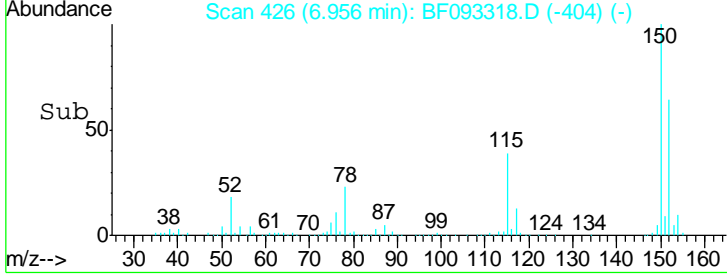
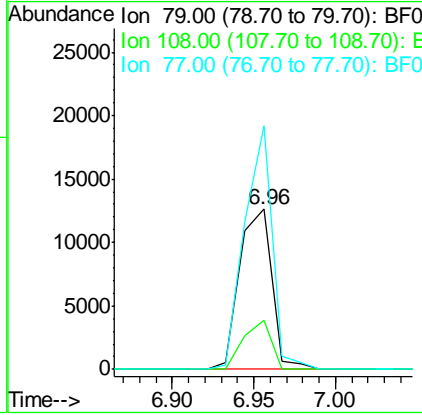
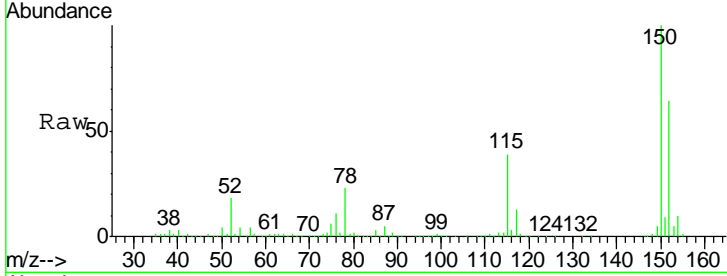




#15
 Benzyl Alcohol
 Concen: 2.06 ng
 RT: 6.96 min Scan# 426
 Delta R.T. -0.05 min
 Lab File: BF093318.D
 Acq: 2 Mar 2017 12:52

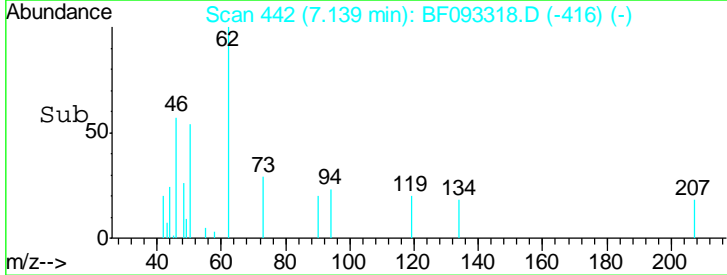
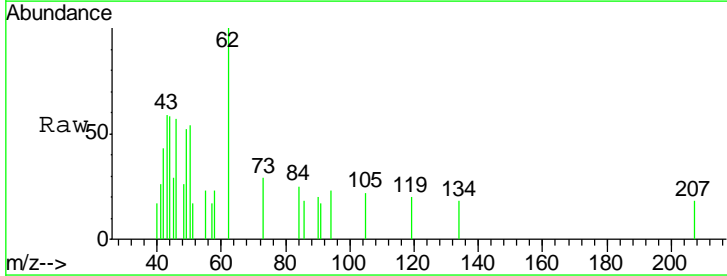
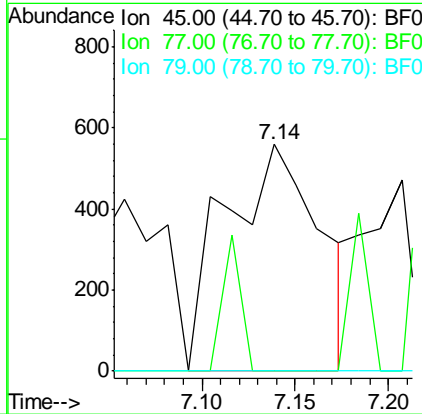
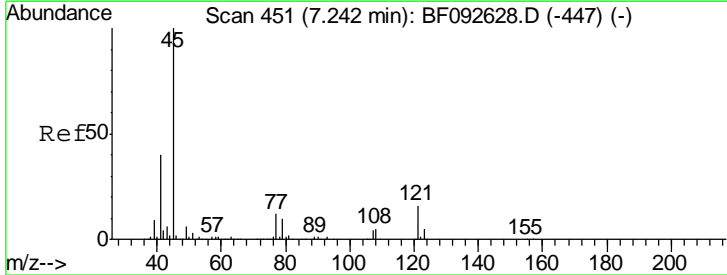
Instrument :
 BNA_F
 ClientSampled :
 CPSIDW-1

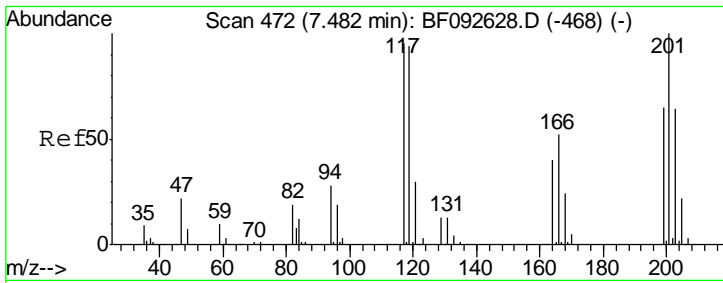
Tgt Ion	Resp	Lower	Upper
79	17211		
108	30.7	61.4	92.0#
77	151.9	50.9	76.3#



#16
 2,2'-oxybis(1-Chloropropane)
 Concen: 0.11 ng
 RT: 7.14 min Scan# 442
 Delta R.T. -0.00 min
 Lab File: BF093318.D
 Acq: 2 Mar 2017 12:52

Tgt Ion	Resp	Lower	Upper
45	1973		
77	0.0	0.0	34.6
79	0.0	0.0	31.2

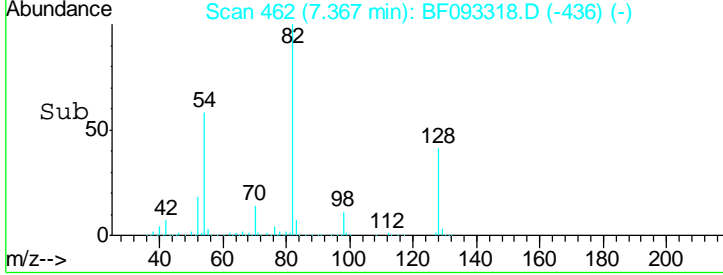
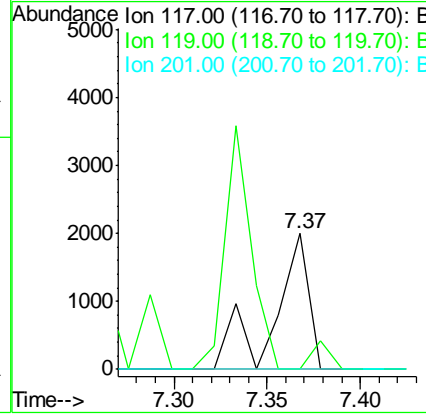
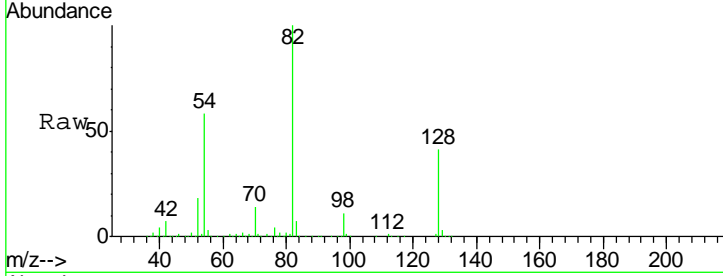




#18
 Hexachloroethane
 Concen: 0.66 ng
 RT: 7.37 min Scan# 462
 Delta R.T. -0.00 min
 Lab File: BF093318.D
 Acq: 2 Mar 2017 12:52

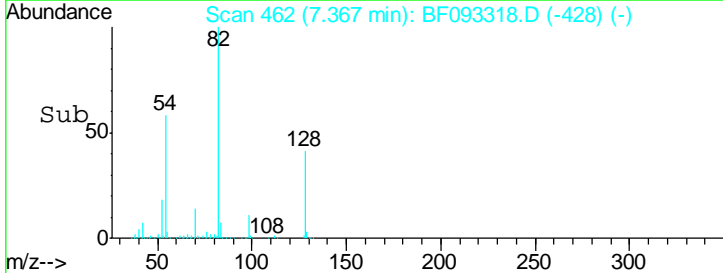
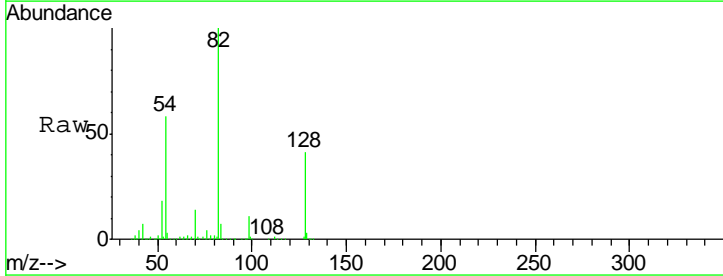
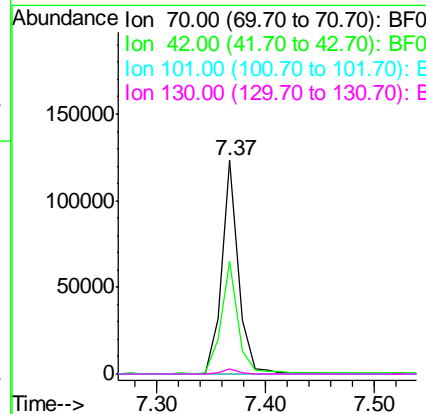
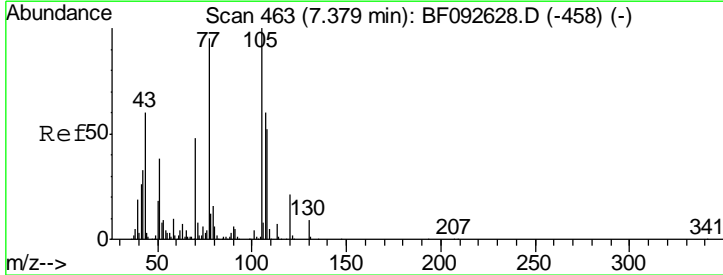
Instrument :
 BNA_F
ClientSampled :
 CPSIDW-1

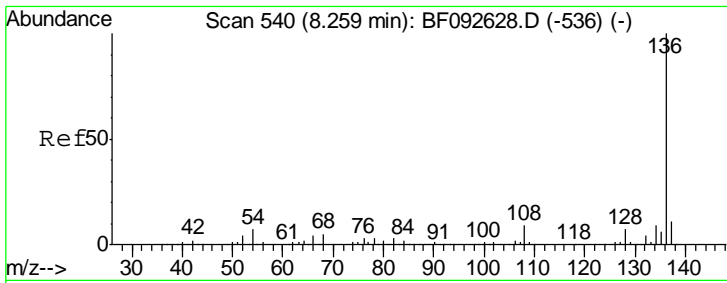
Tgt Ion	Resp	Lower	Upper
117	100		
119	0.0	78.1	117.1#
201	0.0	78.6	117.8#



#19
 n-Nitroso-di-n-propylamine
 Concen: 18.63 ng
 RT: 7.37 min Scan# 462
 Delta R.T. 0.09 min
 Lab File: BF093318.D
 Acq: 2 Mar 2017 12:52

Tgt Ion	Resp	Lower	Upper
70	100		
42	52.9	49.4	74.0
101	0.0	7.4	11.2#
130	2.1	14.2	21.4#

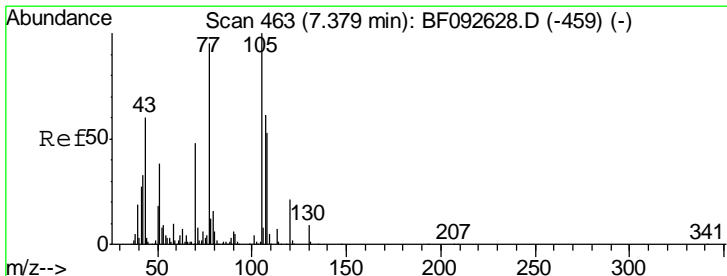
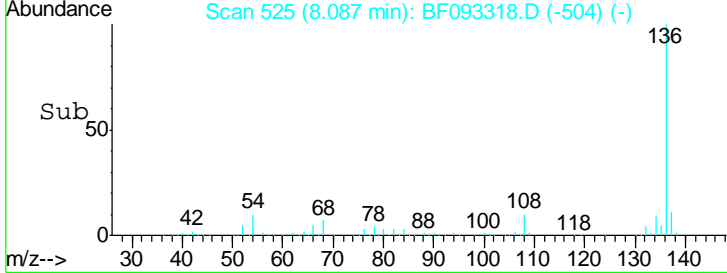
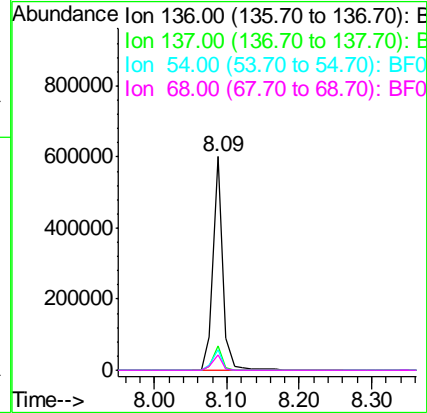
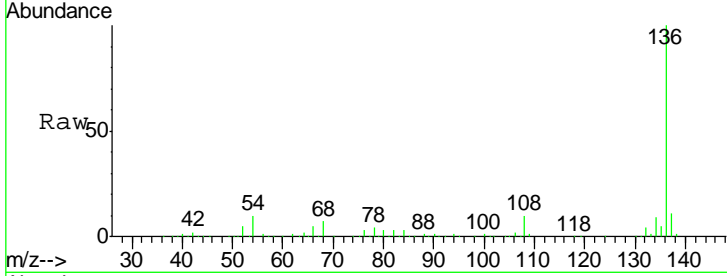




#21
 Naphthalene-d8
 Concen: 20.00 ng
 RT: 8.09 min Scan# 525
 Delta R.T. -0.06 min
 Lab File: BF093318.D
 Acq: 2 Mar 2017 12:52

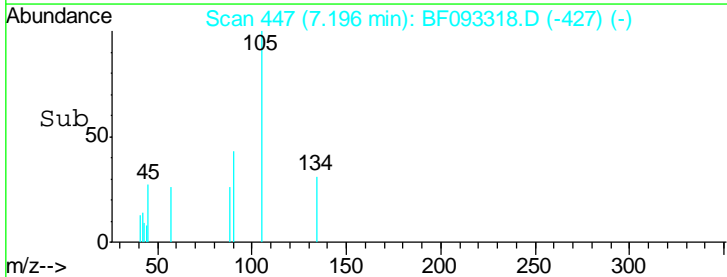
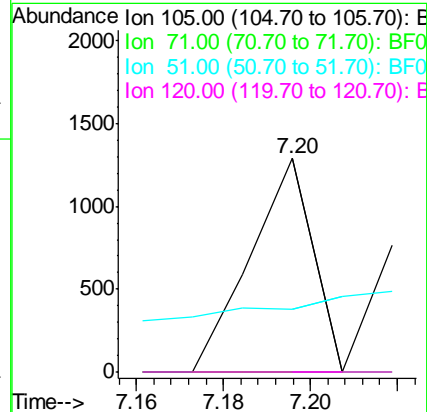
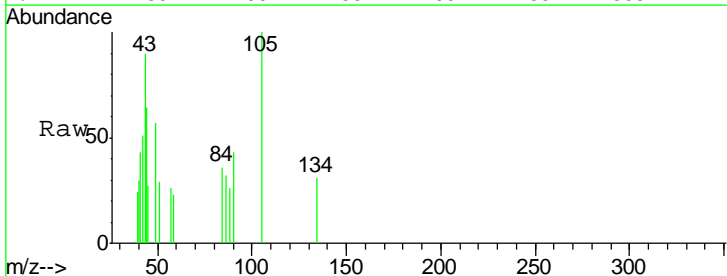
Instrument :
 BNA_F
ClientSampled :
 CPSIDW-1

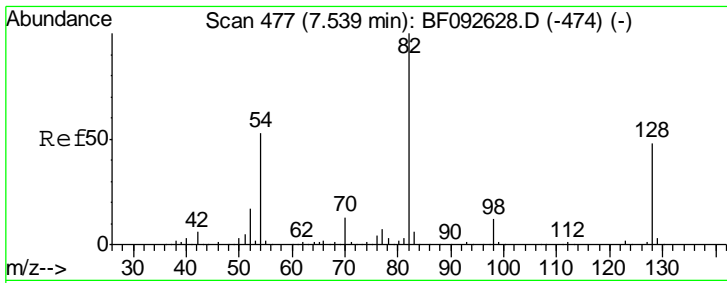
Tgt Ion	Resp	Lower	Upper
136	100		
137	11.3	8.4	12.6
54	9.7	4.5	6.7#
68	7.2	3.6	5.4#



#22
 Acetophenone
 Concen: 0.10 ng
 RT: 7.20 min Scan# 447
 Delta R.T. -0.07 min
 Lab File: BF093318.D
 Acq: 2 Mar 2017 12:52

Tgt Ion	Resp	Lower	Upper
105	100		
71	0.0	3.2	4.8#
51	29.2	26.2	39.4
120	0.0	16.6	24.8#



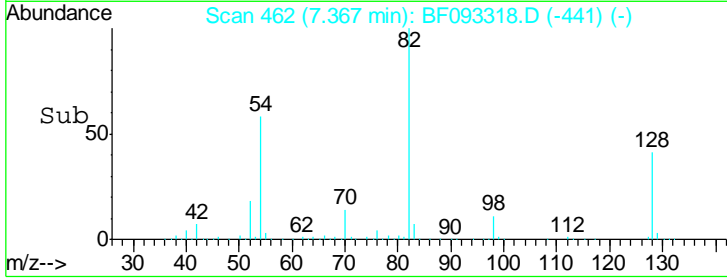
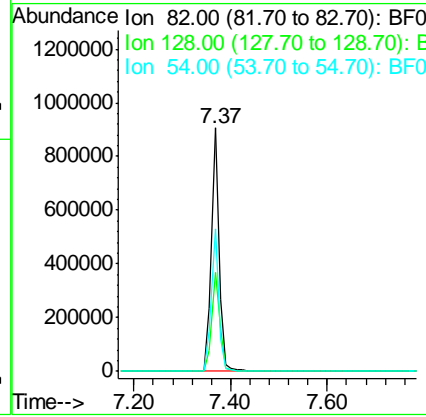
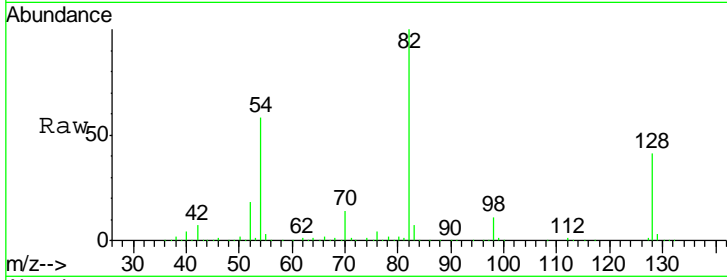


#23
 Nitrobenzene-d5
 Concen: 100.50 ng
 RT: 7.37 min Scan# 462
 Delta R.T. -0.06 min
 Lab File: BF093318.D
 Acq: 2 Mar 2017 12:52

Instrument :
 BNA_F
ClientSampled :
 CPSIDW-1

Tgt Ion: 82 Resp: 1013523

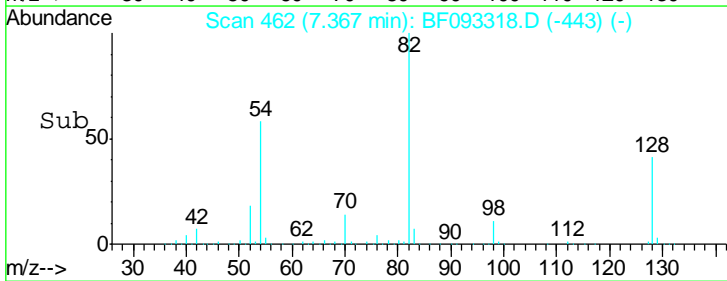
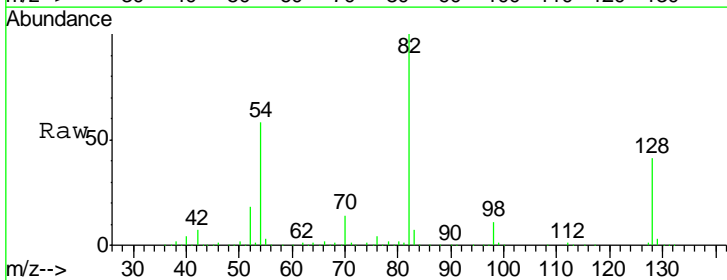
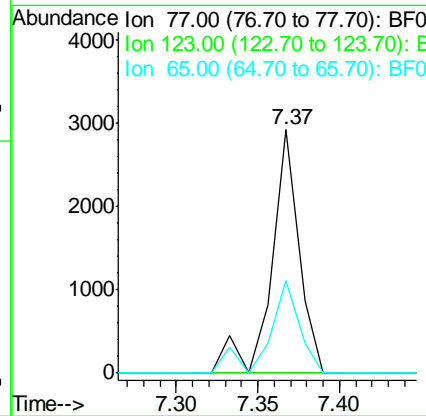
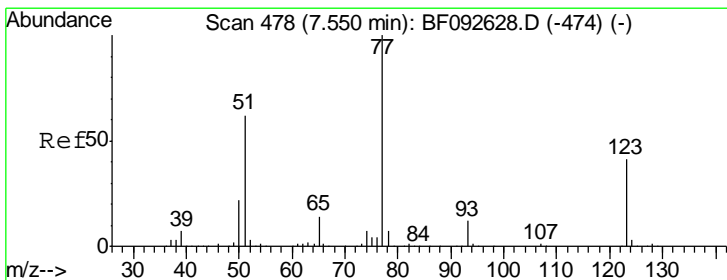
Ion	Ratio	Lower	Upper
82	100		
128	40.9	34.6	52.0
54	58.3	39.5	59.3

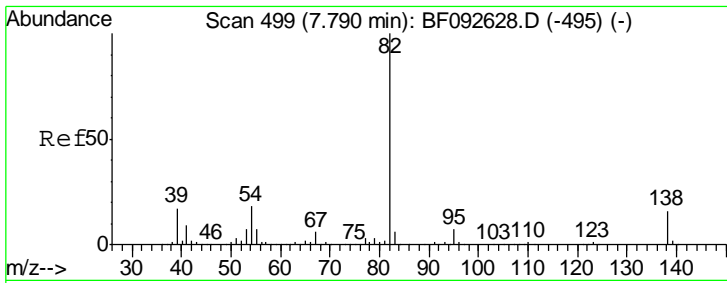


#24
 Nitrobenzene
 Concen: 0.33 ng
 RT: 7.37 min Scan# 462
 Delta R.T. -0.08 min
 Lab File: BF093318.D
 Acq: 2 Mar 2017 12:52

Tgt Ion: 77 Resp: 3467

Ion	Ratio	Lower	Upper
77	100		
123	0.0	33.0	49.4#
65	37.9	11.2	16.8#

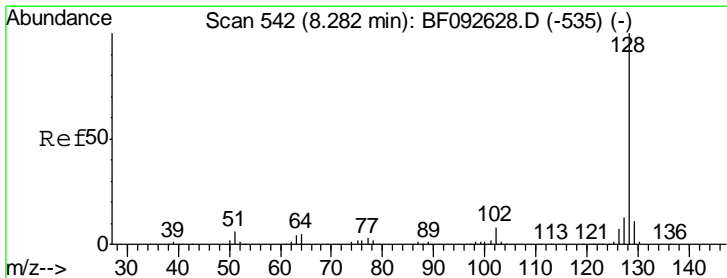
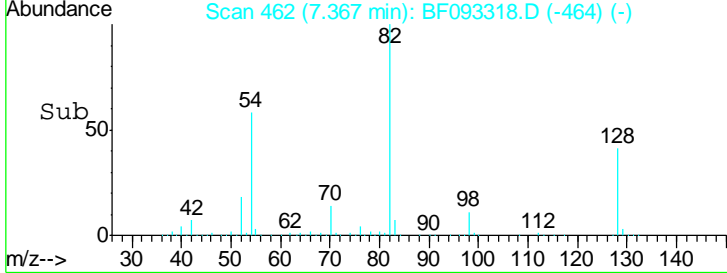
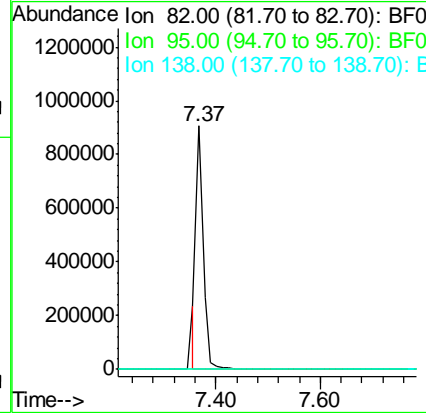
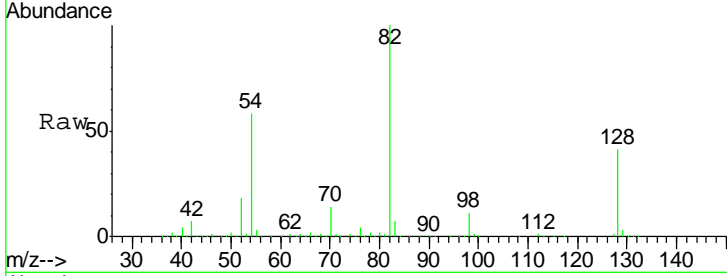




#25
 Isophorone
 Concen: 45.38 ng
 RT: 7.37 min Scan# 462
 Delta R.T. -0.32 min
 Lab File: BF093318.D
 Acq: 2 Mar 2017 12:52

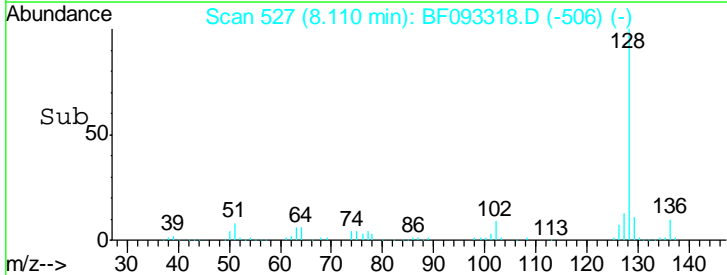
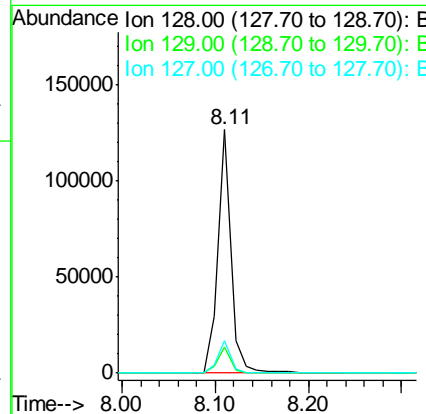
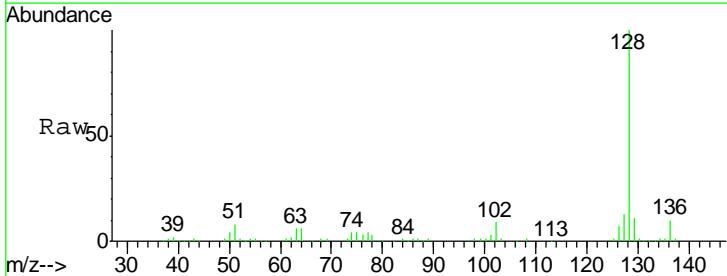
Instrument :
 BNA_F
 ClientSampleID :
 CPSIDW-1

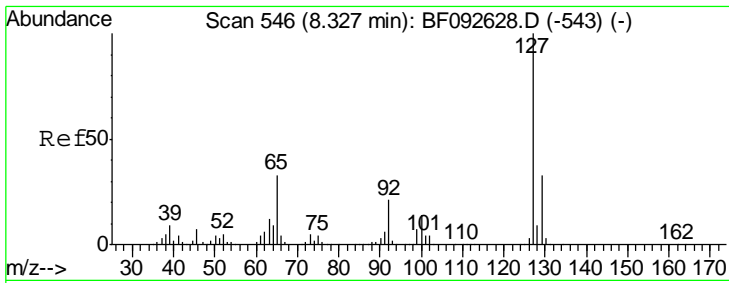
Tgt Ion	Resp	Lower	Upper
82	100		
95	0.0	5.6	8.4#
138	0.0	14.6	22.0#



#31
 Naphthalene
 Concen: 4.36 ng
 RT: 8.11 min Scan# 527
 Delta R.T. -0.06 min
 Lab File: BF093318.D
 Acq: 2 Mar 2017 12:52

Tgt Ion	Resp	Lower	Upper
128	100		
129	10.6	9.5	14.3
127	13.2	10.8	16.2

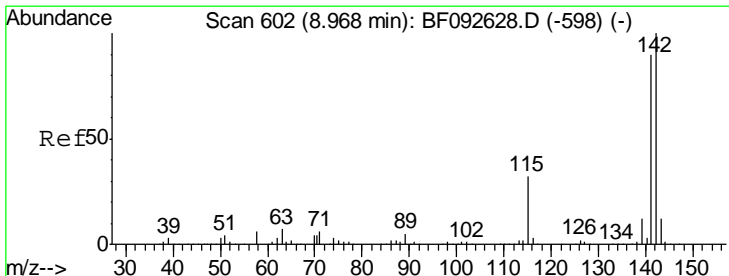
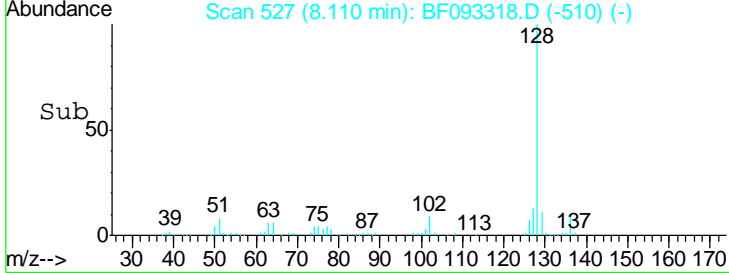
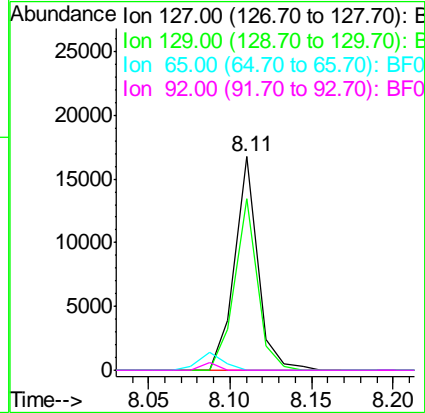
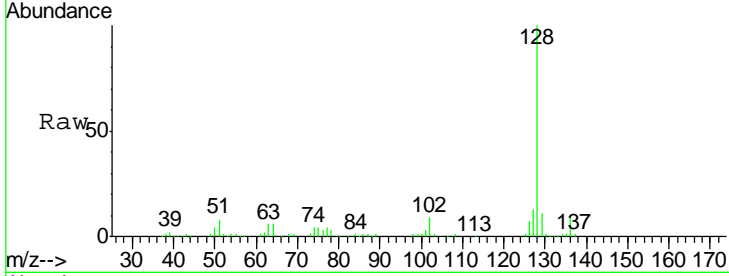




#33
 4-Chloroaniline
 Concen: 1.47 ng
 RT: 8.11 min Scan# 527
 Delta R.T. -0.10 min
 Lab File: BF093318.D
 Acq: 2 Mar 2017 12:52

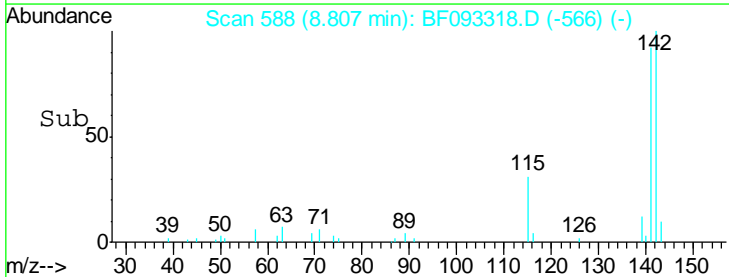
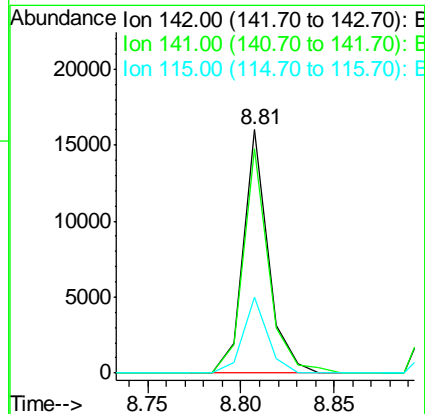
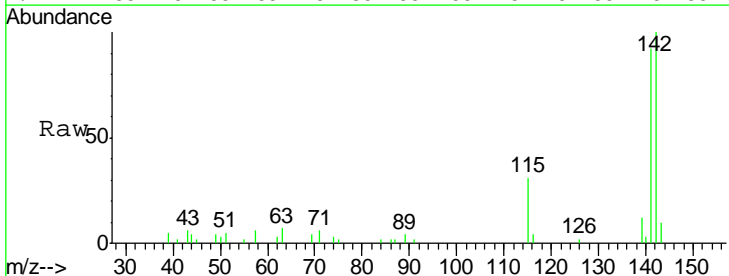
Instrument :
 BNA_F
ClientSampled :
 CPSIDW-1

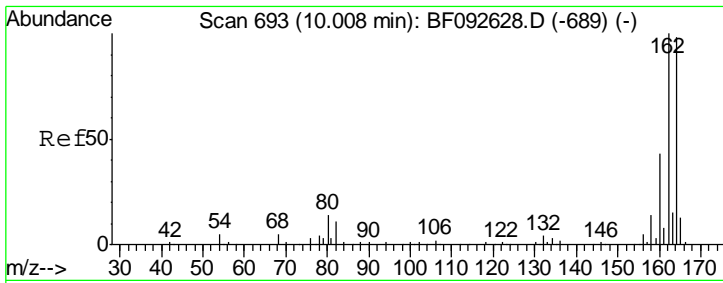
Tgt Ion	Resp	Lower	Upper
127	16405		
129	80.3	26.3	39.5#
65	0.0	25.8	38.8#
92	0.0	16.1	24.1#



#37
 2-Methylnaphthalene
 Concen: 0.82 ng
 RT: 8.81 min Scan# 588
 Delta R.T. -0.05 min
 Lab File: BF093318.D
 Acq: 2 Mar 2017 12:52

Tgt Ion	Resp	Lower	Upper
142	14917		
141	92.0	71.0	106.6
115	31.1	28.3	42.5



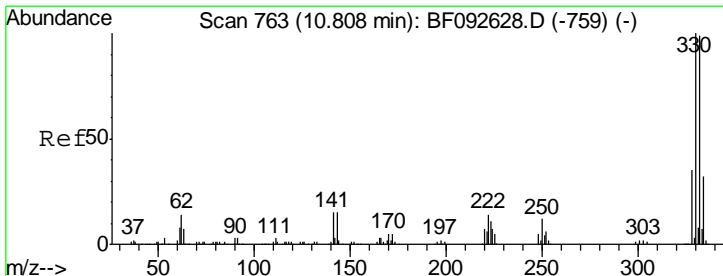
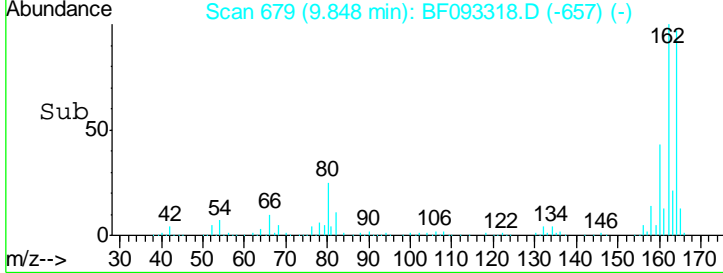
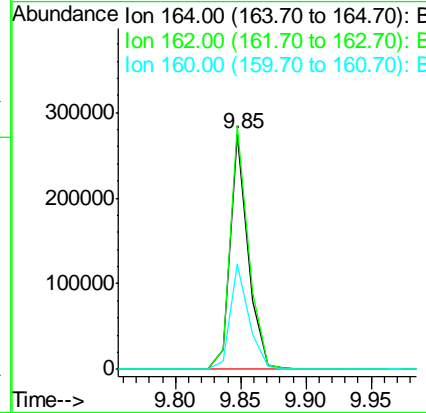
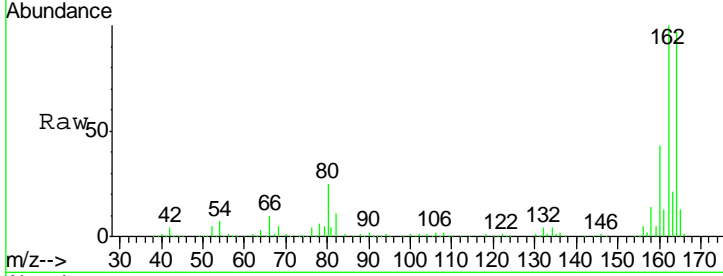


#38
 Acenaphthene-d10
 Concen: 20.00 ng
 RT: 9.85 min Scan# 679
 Delta R.T. -0.05 min
 Lab File: BF093318.D
 Acq: 2 Mar 2017 12:52

Instrument :
 BNA_F
 ClientSampleID :
 CPSIDW-1

Tgt Ion:164 Resp: 263612

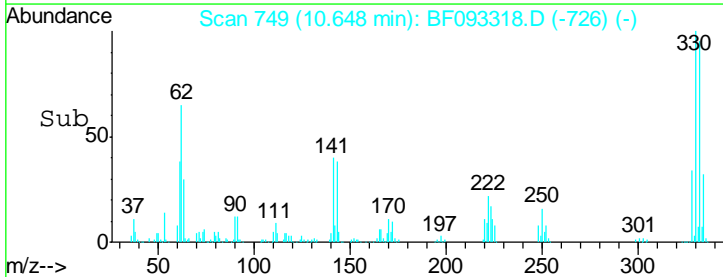
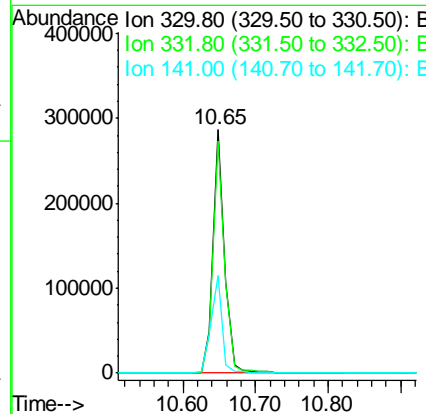
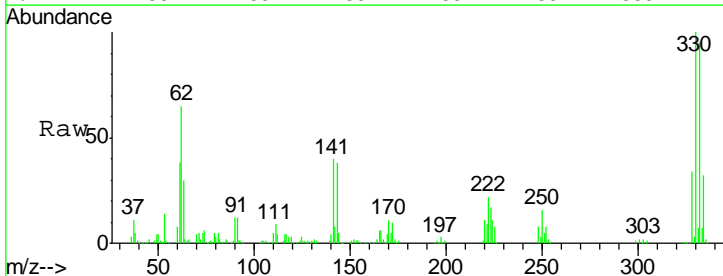
Ion	Ratio	Lower	Upper
164	100		
162	103.5	80.2	120.2
160	44.5	36.9	55.3

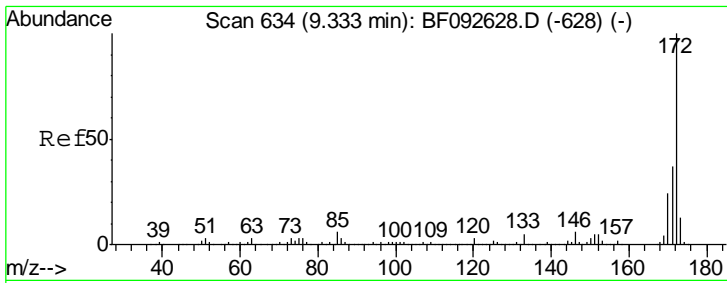


#41
 2,4,6-Tribromophenol
 Concen: 167.33 ng
 RT: 10.65 min Scan# 749
 Delta R.T. -0.03 min
 Lab File: BF093318.D
 Acq: 2 Mar 2017 12:52

Tgt Ion:330 Resp: 319034

Ion	Ratio	Lower	Upper
330	100		
332	96.1	77.4	116.2
141	38.4	34.1	51.1



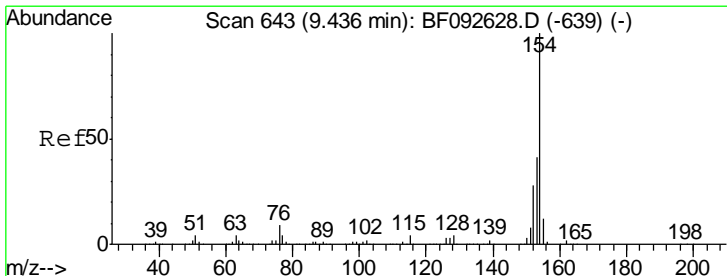
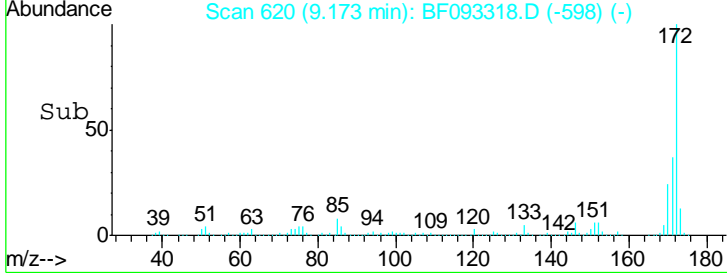
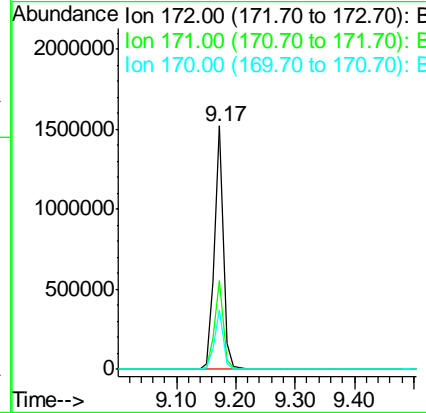
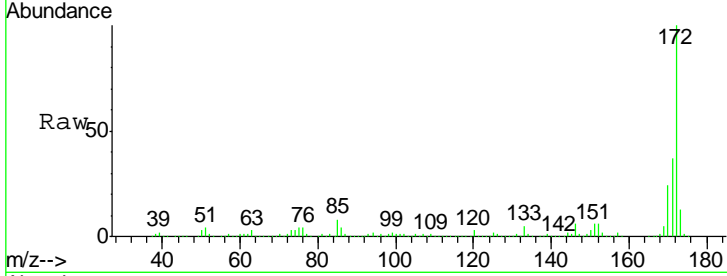


#44
 2-Fluorobiphenyl
 Concen: 109.11 ng
 RT: 9.17 min Scan# 620
 Delta R.T. -0.05 min
 Lab File: BF093318.D
 Acq: 2 Mar 2017 12:52

Instrument :
 BNA_F
ClientSampled :
 CPSIDW-1

Tgt Ion:172 Resp: 1587627

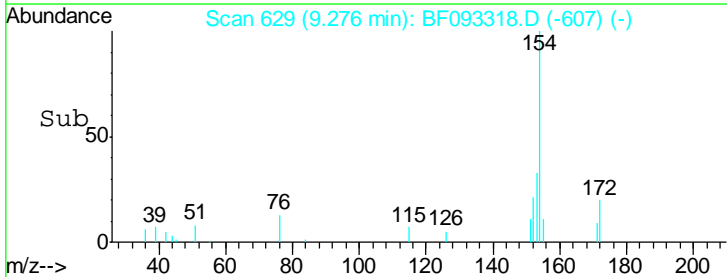
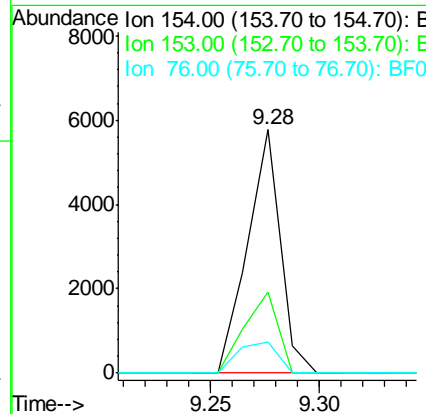
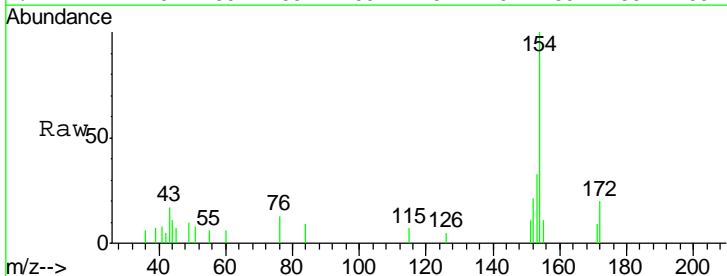
Ion	Ratio	Lower	Upper
172	100		
171	36.6	29.4	44.0
170	24.2	20.2	30.4

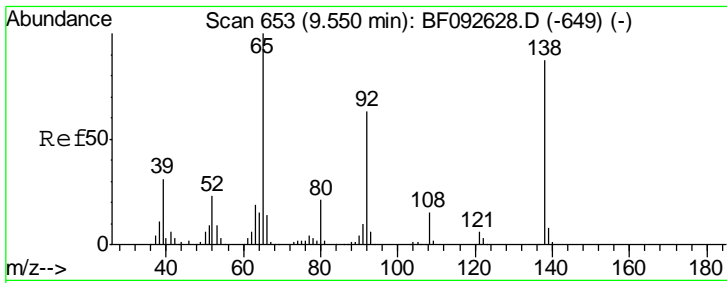


#45
 1,1'-Biphenyl
 Concen: 0.32 ng
 RT: 9.28 min Scan# 629
 Delta R.T. -0.05 min
 Lab File: BF093318.D
 Acq: 2 Mar 2017 12:52

Tgt Ion:154 Resp: 6044

Ion	Ratio	Lower	Upper
154	100		
153	33.2	20.9	60.9
76	12.8	0.0	30.5

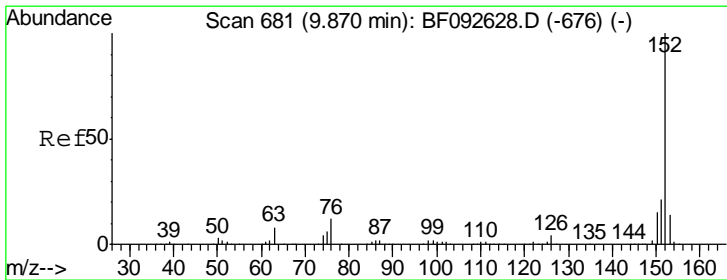
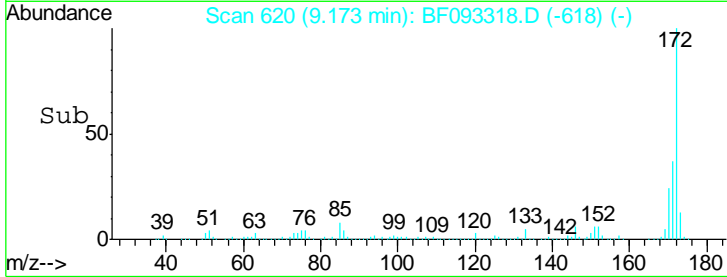
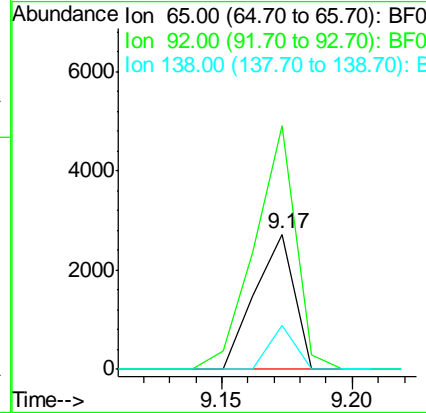
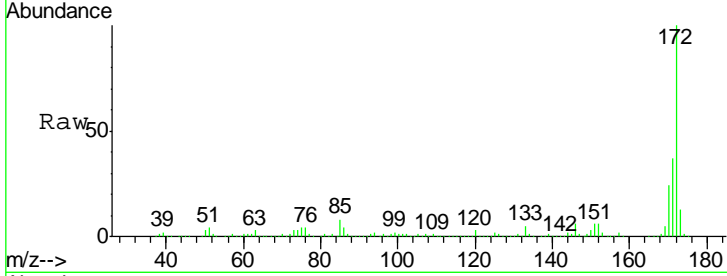




#47
 2-Nitroaniline
 Concen: 0.57 ng
 RT: 9.17 min Scan# 620
 Delta R.T. -0.27 min
 Lab File: BF093318.D
 Acq: 2 Mar 2017 12:52

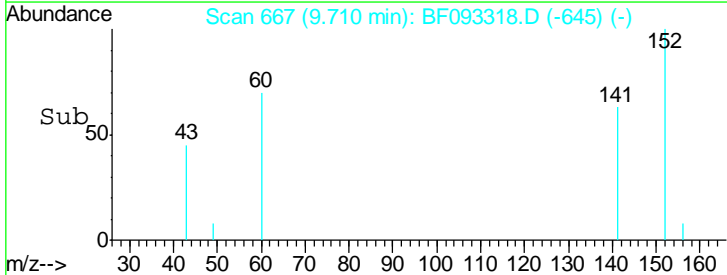
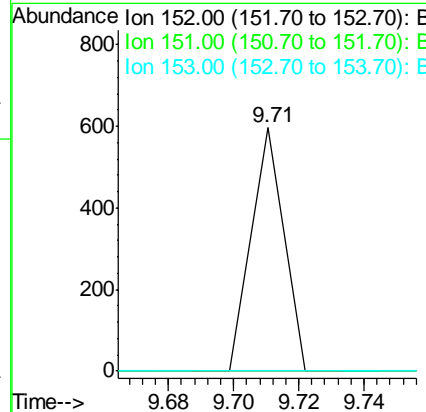
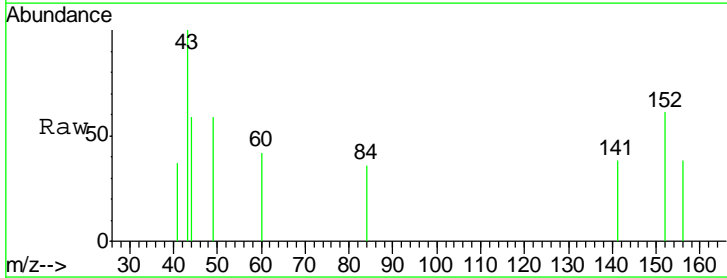
Instrument :
 BNA_F
 ClientSampled :
 CPSIDW-1

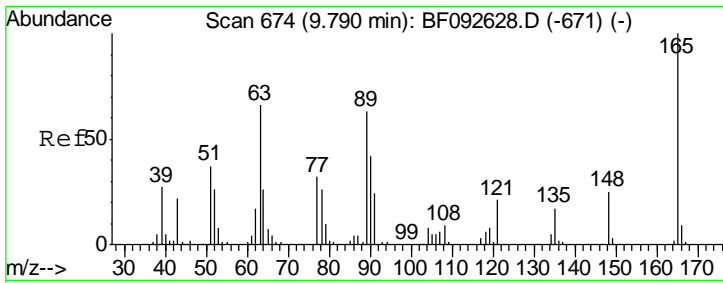
Tgt Ion	Resp	Lower	Upper
65	100		
92	180.0	53.9	80.9#
138	32.4	76.8	115.2#



#48
 Acenaphthylene
 Concen: 0.02 ng
 RT: 9.71 min Scan# 667
 Delta R.T. -0.05 min
 Lab File: BF093318.D
 Acq: 2 Mar 2017 12:52

Tgt Ion	Resp	Lower	Upper
152	100		
151	0.0	16.9	25.3#
153	0.0	11.4	17.2#

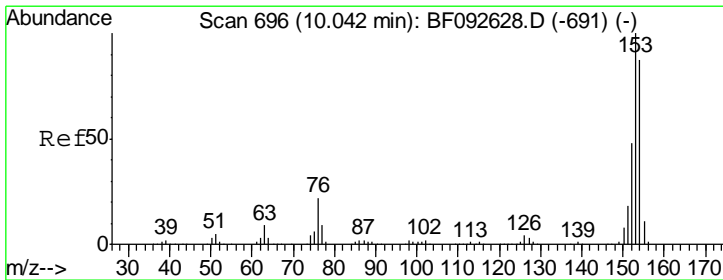
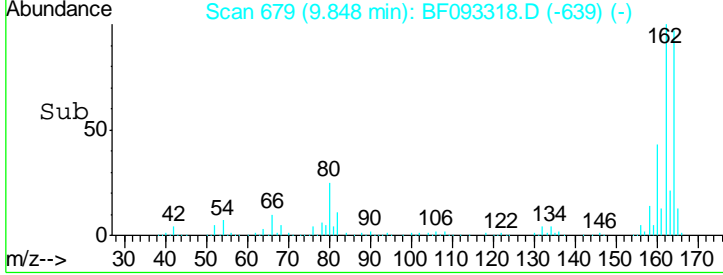
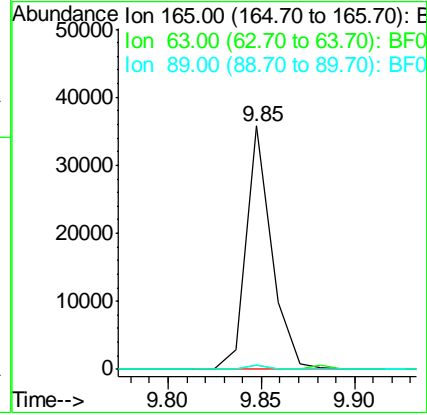
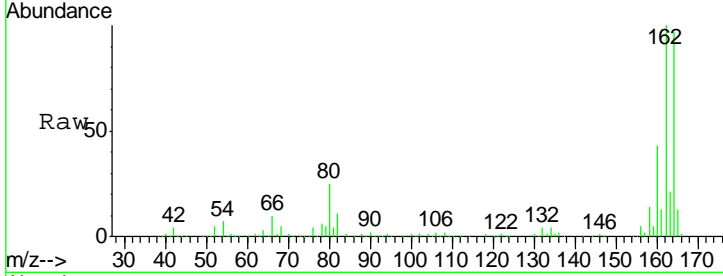




#50
 2,6-Dinitrotoluene
 Concen: 8.88 ng
 RT: 9.85 min Scan# 679
 Delta R.T. 0.16 min
 Lab File: BF093318.D
 Acq: 2 Mar 2017 12:52

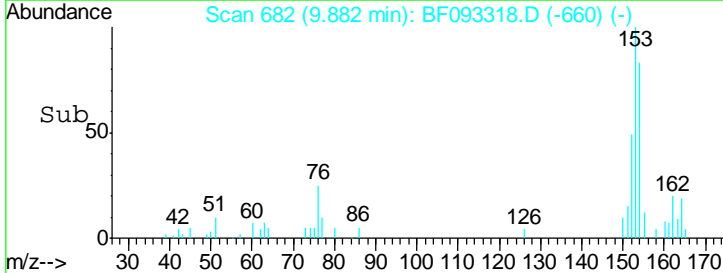
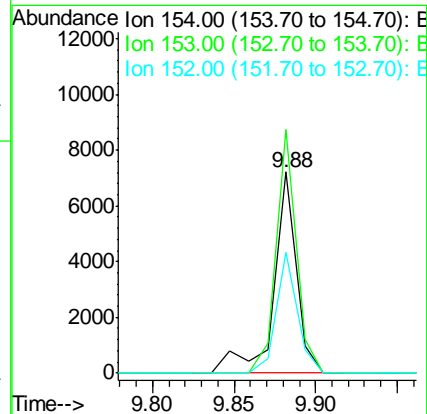
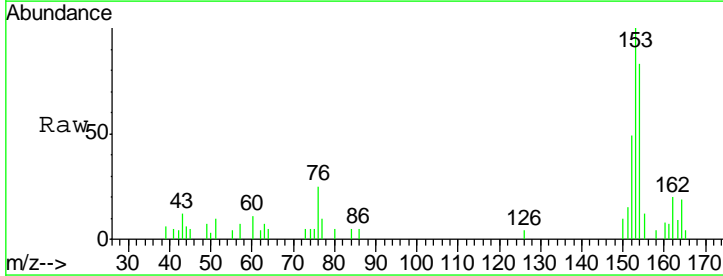
Instrument :
 BNA_F
 ClientSampleID :
 CPSIDW-1

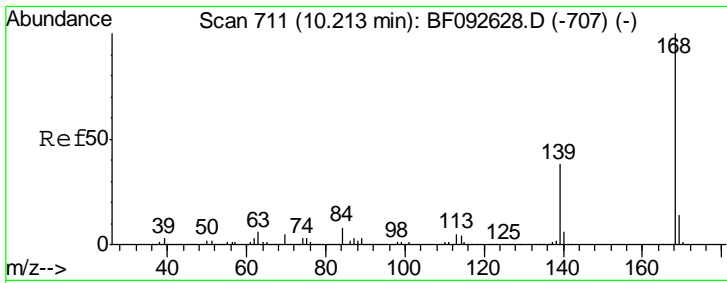
Tgt Ion	Resp	Lower	Upper
165	100		
63	1.6	36.2	54.4#
89	1.6	40.2	60.4#



#51
 Acenaphthene
 Concen: 0.46 ng
 RT: 9.88 min Scan# 682
 Delta R.T. -0.05 min
 Lab File: BF093318.D
 Acq: 2 Mar 2017 12:52

Tgt Ion	Resp	Lower	Upper
154	100		
153	121.0	88.6	133.0
152	59.8	41.6	62.4

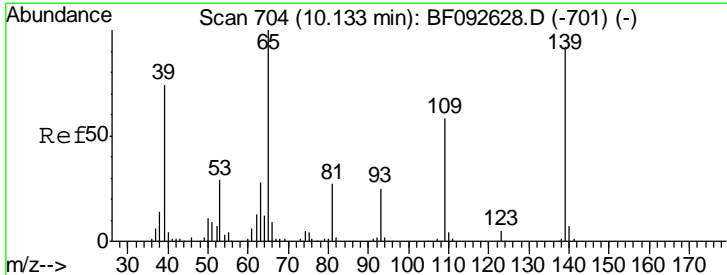
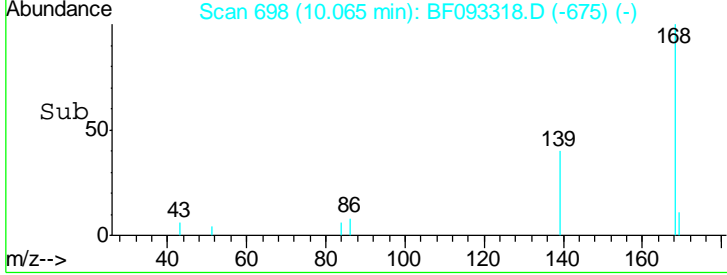
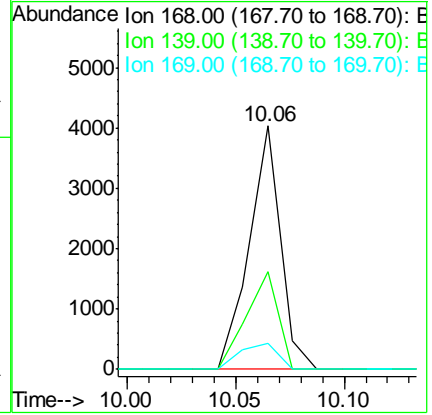
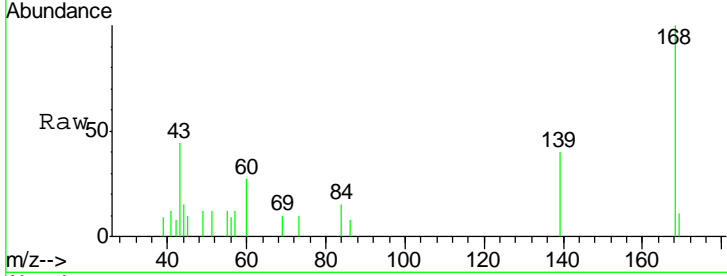




#54
 Dibenzofuran
 Concen: 0.19 ng
 RT: 10.06 min Scan# 698
 Delta R.T. -0.03 min
 Lab File: BF093318.D
 Acq: 2 Mar 2017 12:52

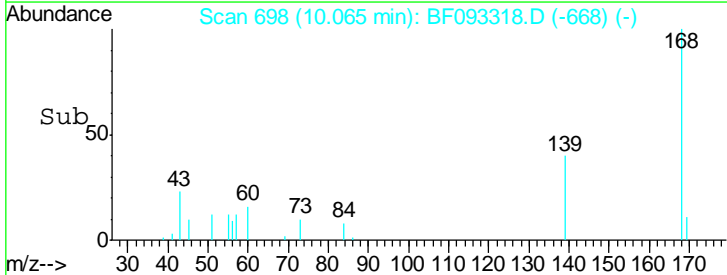
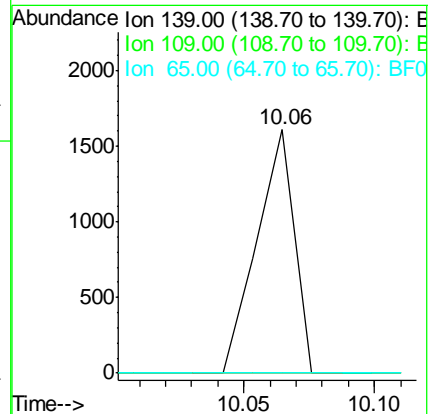
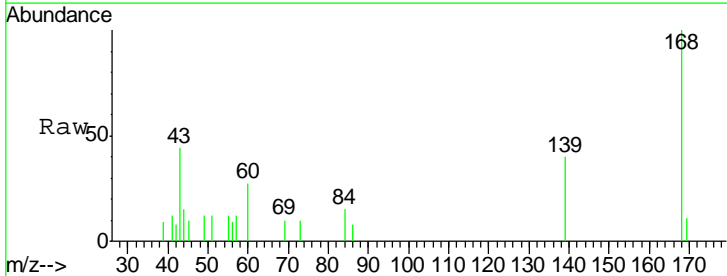
Instrument :
 BNA_F
 ClientSampleID :
 CPSIDW-1

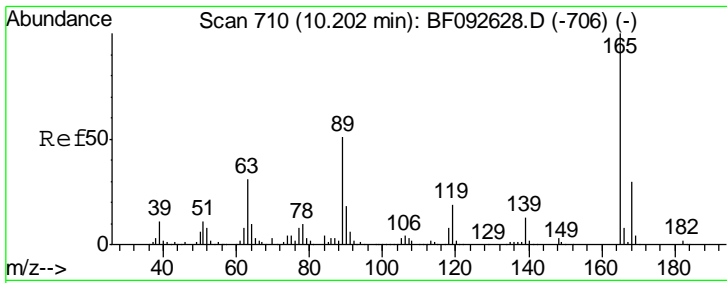
Tgt Ion	Resp	Lower	Upper
168	100		
139	39.9	32.6	49.0
169	10.9	11.3	16.9#



#55
 4-Nitrophenol
 Concen: 0.51 ng
 RT: 10.06 min Scan# 698
 Delta R.T. 0.05 min
 Lab File: BF093318.D
 Acq: 2 Mar 2017 12:52

Tgt Ion	Resp	Lower	Upper
139	100		
109	0.0	52.2	92.2#
65	0.0	85.8	125.8#

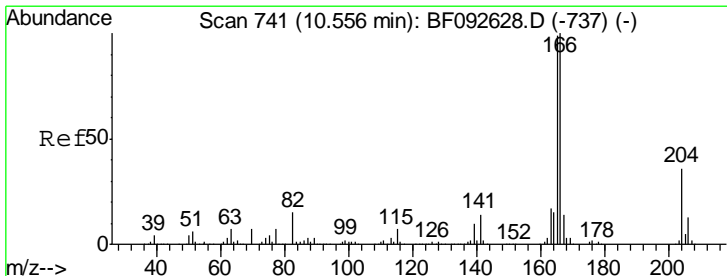
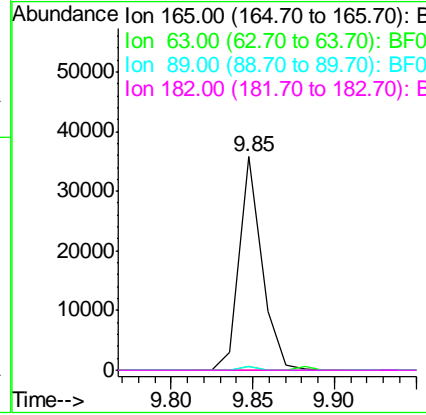
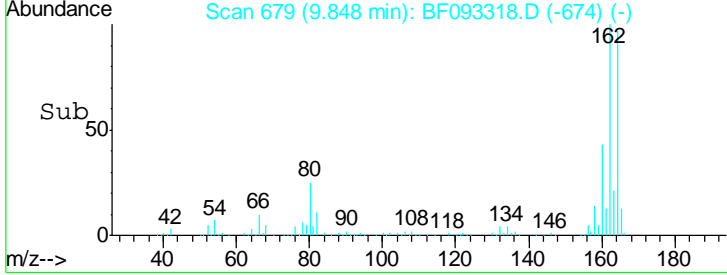
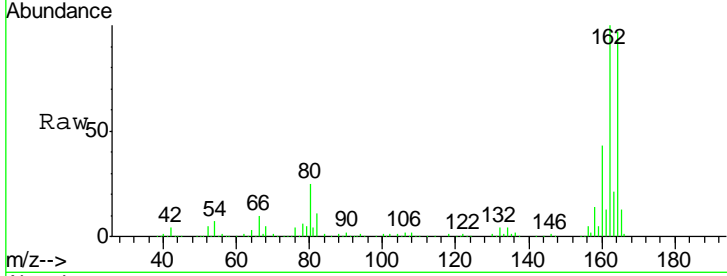




#56
 2,4-Dinitrotoluene
 Concen: 6.67 ng
 RT: 9.85 min Scan# 679
 Delta R.T. -0.24 min
 Lab File: BF093318.D
 Acq: 2 Mar 2017 12:52

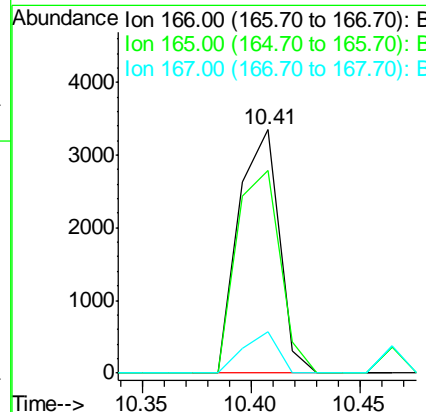
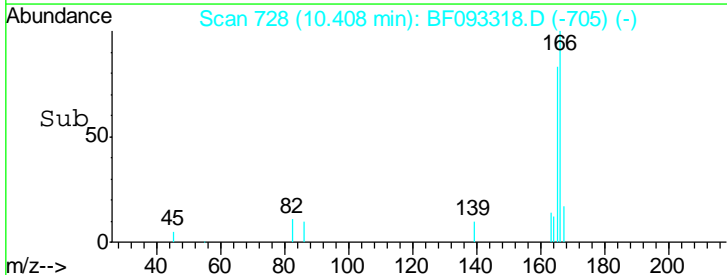
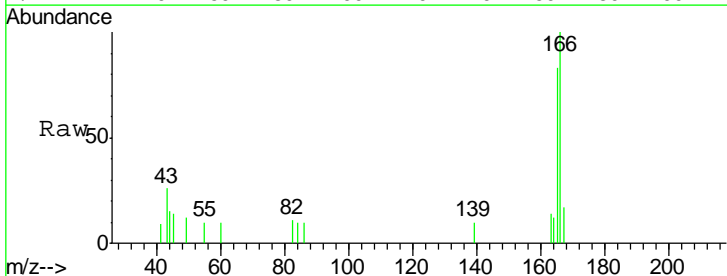
Instrument :
 BNA_F
ClientSampled :
 CPSIDW-1

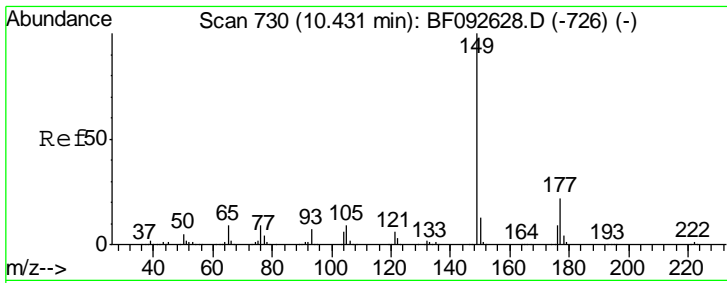
Tgt Ion	Resp	Lower	Upper
165	100		
63	1.6	40.2	60.4#
89	1.6	62.5	93.7#
182	0.0	1.8	2.8#



#57
 Fluorene
 Concen: 0.27 ng
 RT: 10.41 min Scan# 728
 Delta R.T. -0.03 min
 Lab File: BF093318.D
 Acq: 2 Mar 2017 12:52

Tgt Ion	Resp	Lower	Upper
166	100		
165	83.2	77.8	116.8
167	17.0	10.8	16.2#

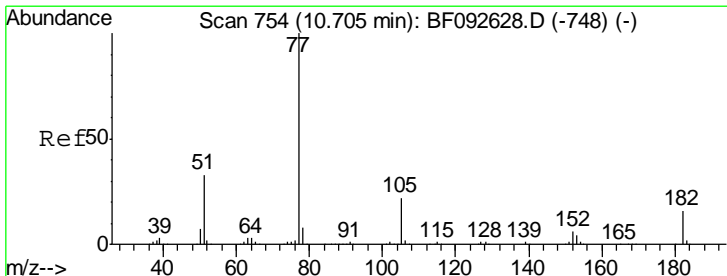
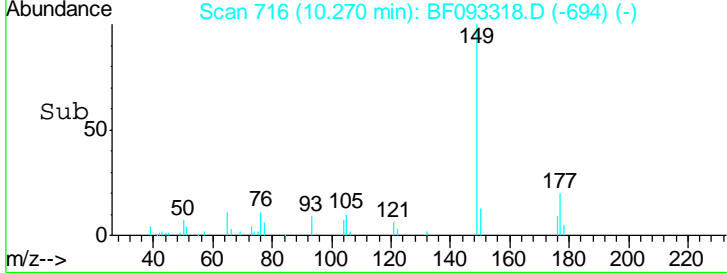
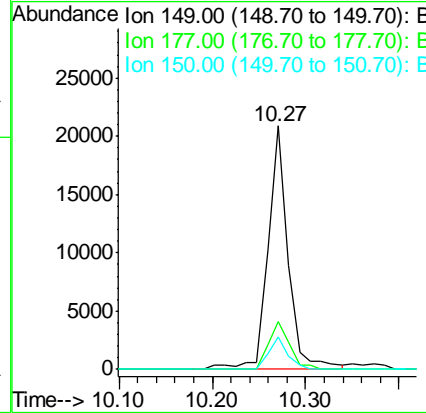
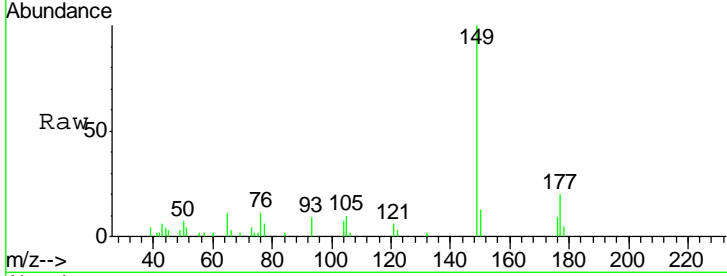




#59
 Diethylphthalate
 Concen: 1.89 ng
 RT: 10.27 min Scan# 716
 Delta R.T. -0.05 min
 Lab File: BF093318.D
 Acq: 2 Mar 2017 12:52

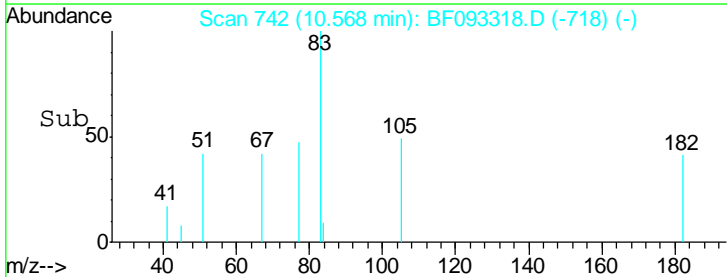
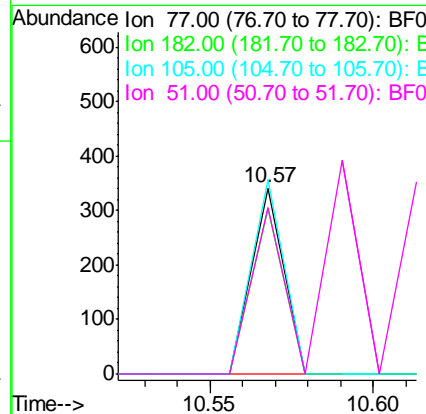
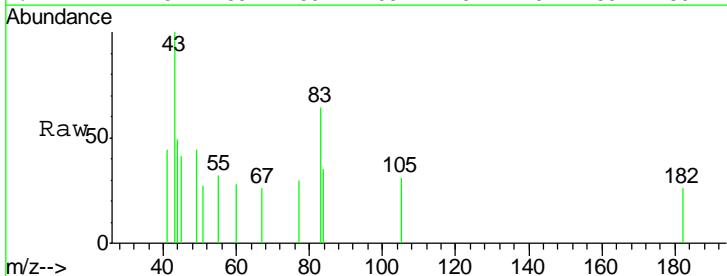
Instrument :
 BNA_F
ClientSampled :
 CPSIDW-1

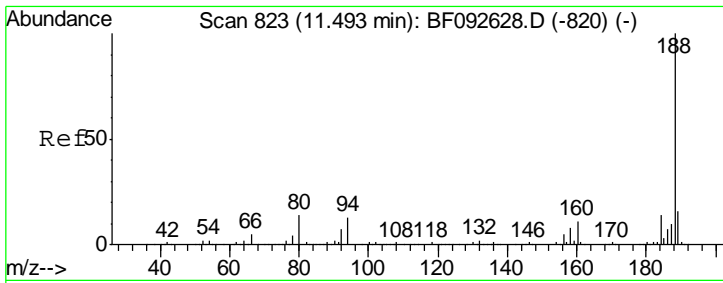
Tgt Ion	Resp	Lower	Upper
149	31587		
177	19.8	16.6	25.0
150	13.2	10.4	15.6



#62
 Azobenzene
 Concen: 0.01 ng
 RT: 10.57 min Scan# 742
 Delta R.T. -0.02 min
 Lab File: BF093318.D
 Acq: 2 Mar 2017 12:52

Tgt Ion	Resp	Lower	Upper
77	234		
182	88.6	0.0	39.3#
105	105.0	2.3	42.3#
51	89.4	8.9	48.9#

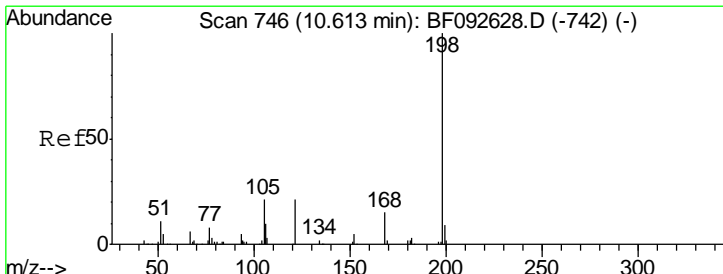
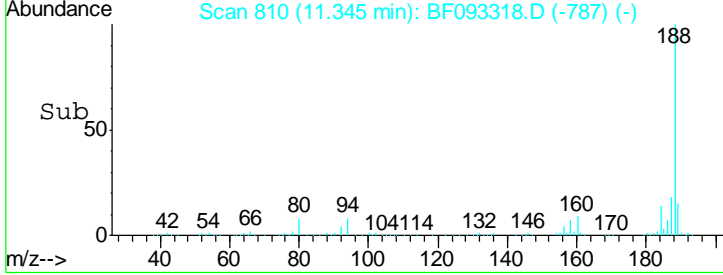
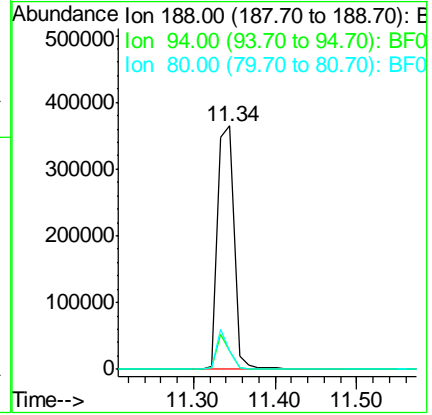
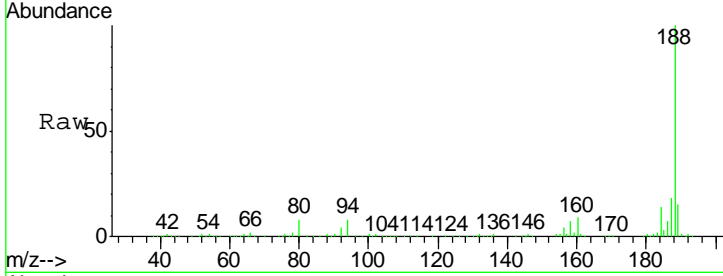




#63
 Phenanthrene-d10
 Concen: 20.00 ng
 RT: 11.34 min Scan# 810
 Delta R.T. -0.03 min
 Lab File: BF093318.D
 Acq: 2 Mar 2017 12:52

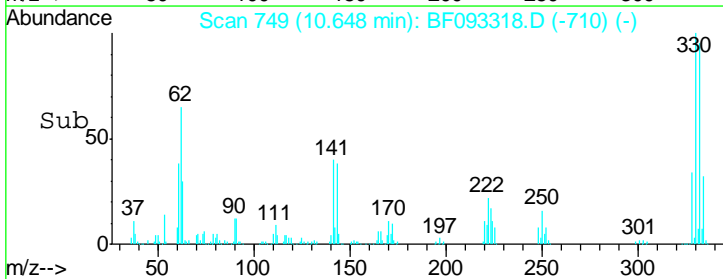
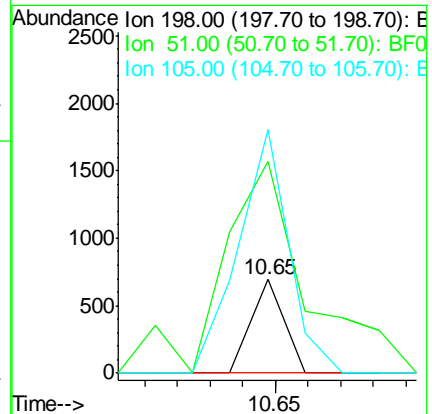
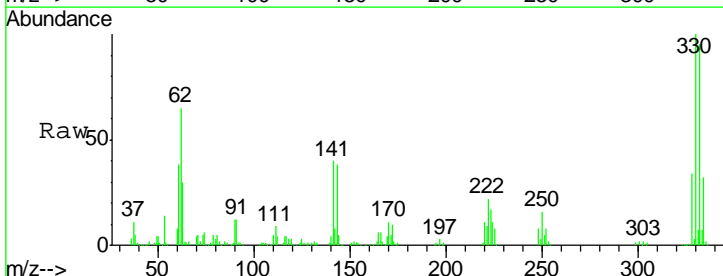
Instrument :
 BNA_F
 ClientSampled :
 CPSIDW-1

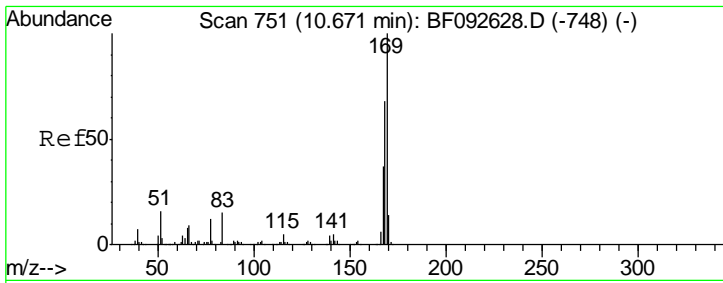
Tgt Ion	Resp	Lower	Upper
188	100		
94	7.6	10.0	15.0#
80	7.6	11.2	16.8#



#64
 4,6-Dinitro-2-methylphenol
 Concen: 2.81 ng
 RT: 10.65 min Scan# 749
 Delta R.T. 0.15 min
 Lab File: BF093318.D
 Acq: 2 Mar 2017 12:52

Tgt Ion	Resp	Lower	Upper
198	100		
51	225.9	6.7	46.7#
105	259.7	16.6	56.6#

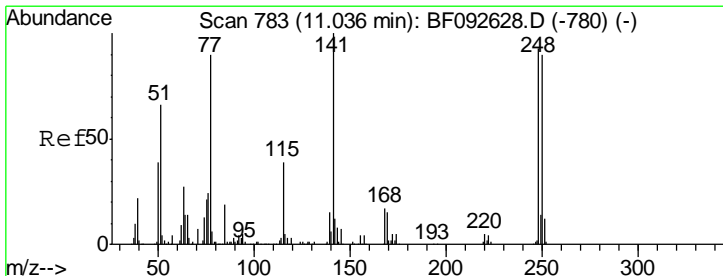
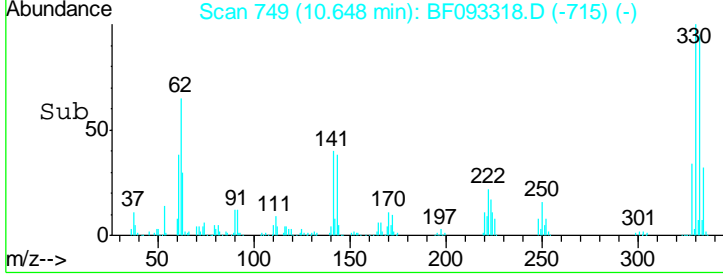
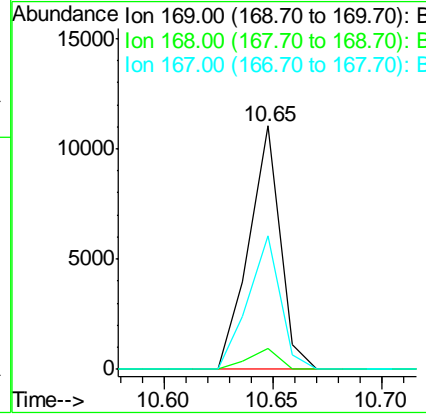
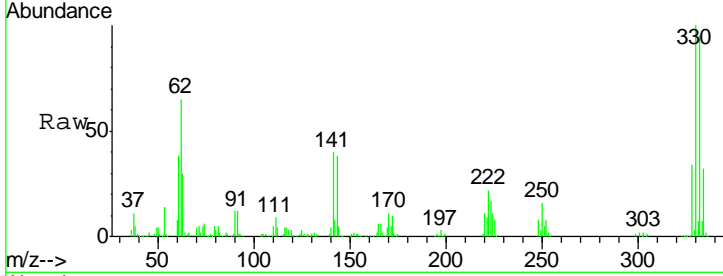




#65
 n-Nitrosodiphenylamine
 Concen: 0.67 ng
 RT: 10.65 min Scan# 749
 Delta R.T. 0.09 min
 Lab File: BF093318.D
 Acq: 2 Mar 2017 12:52

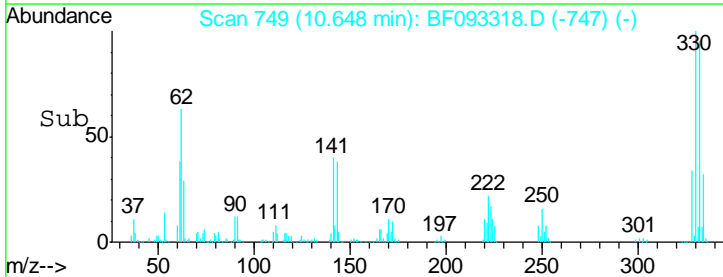
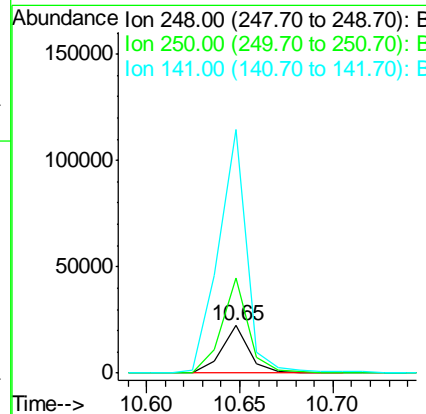
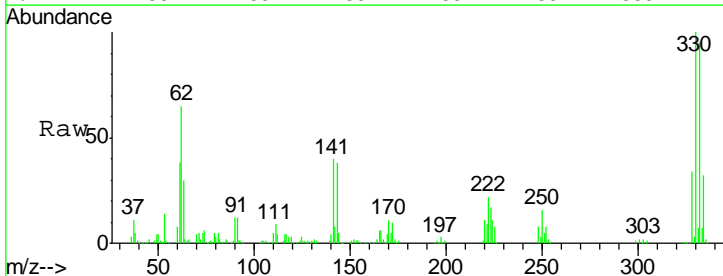
Instrument :
 BNA_F
ClientSampled :
 CPSIDW-1

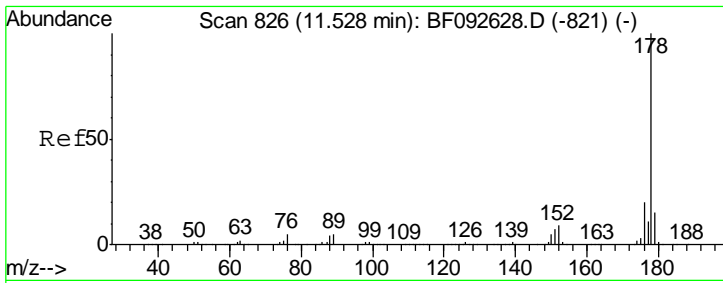
Tgt Ion	Resp	Lower	Upper
169	11066		
168	8.6	54.2	81.2#
167	55.0	30.2	45.4#



#66
 4-Bromophenyl-phenylether
 Concen: 4.18 ng
 RT: 10.65 min Scan# 749
 Delta R.T. -0.27 min
 Lab File: BF093318.D
 Acq: 2 Mar 2017 12:52

Tgt Ion	Resp	Lower	Upper
248	22568		
250	199.9	76.9	115.3#
141	513.2	68.2	102.4#

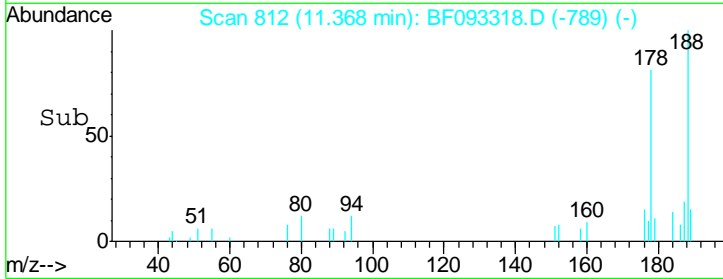
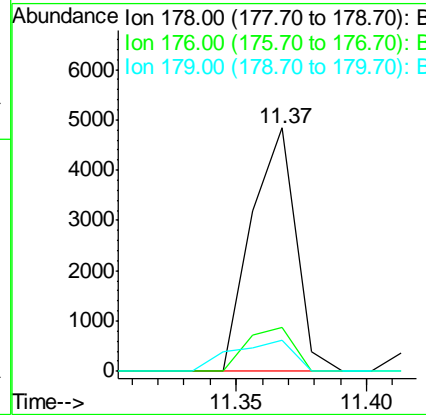
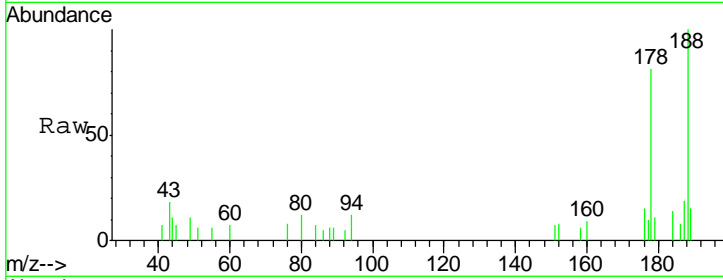




#70
 Phenanthrene
 Concen: 0.20 ng
 RT: 11.37 min Scan# 812
 Delta R.T. -0.03 min
 Lab File: BF093318.D
 Acq: 2 Mar 2017 12:52

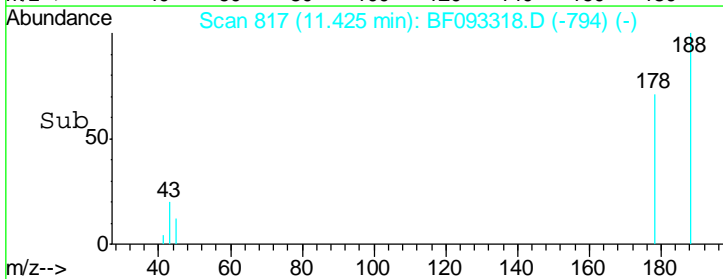
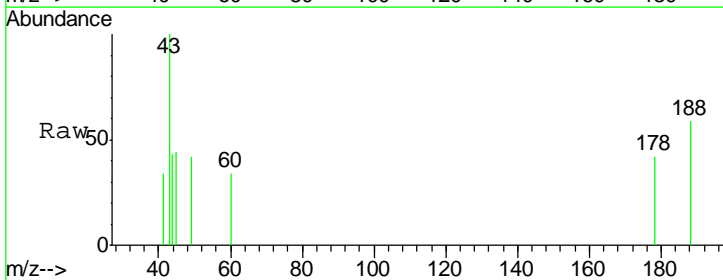
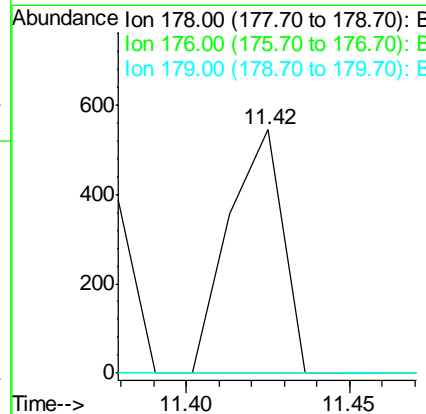
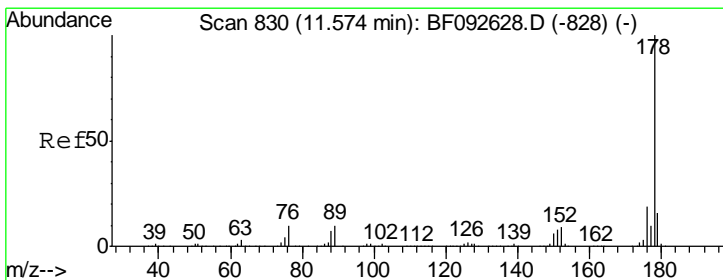
Instrument :
 BNA_F
 ClientSampleID :
 CPSIDW-1

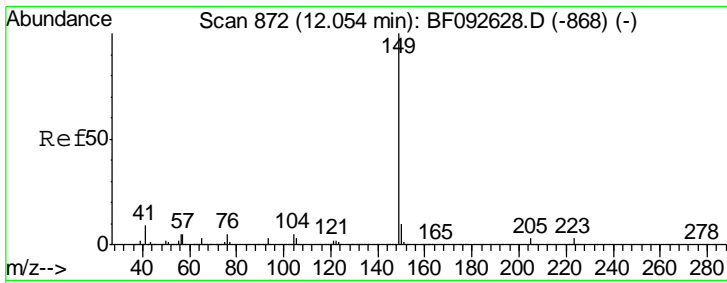
Tgt Ion	Resp	Lower	Upper
178	100		
176	18.2	16.6	25.0
179	13.0	12.8	19.2



#71
 Anthracene
 Concen: 0.02 ng
 RT: 11.42 min Scan# 817
 Delta R.T. -0.03 min
 Lab File: BF093318.D
 Acq: 2 Mar 2017 12:52

Tgt Ion	Resp	Lower	Upper
178	100		
176	0.0	15.9	23.9#
179	0.0	13.2	19.8#

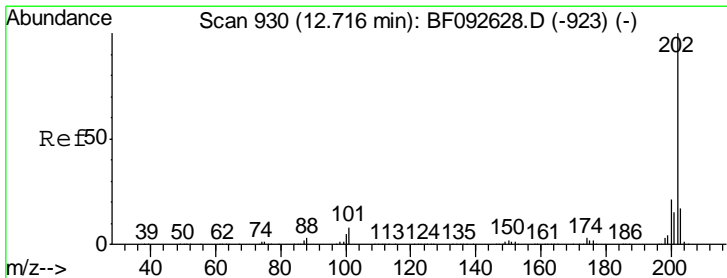
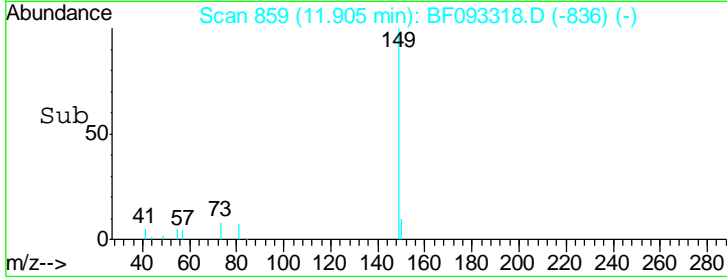
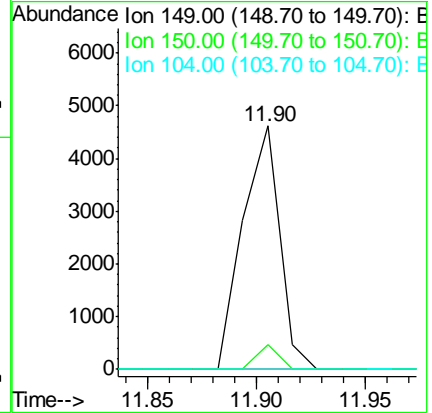
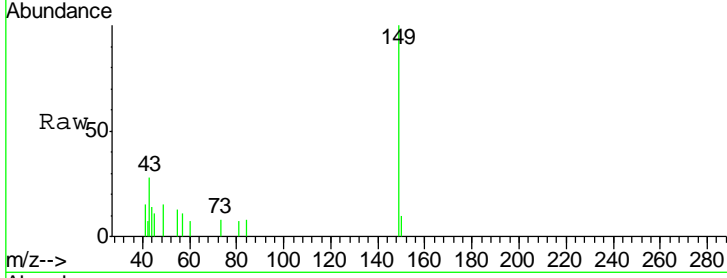




#73
 Di-n-butylphthalate
 Concen: 0.18 ng
 RT: 11.90 min Scan# 859
 Delta R.T. -0.03 min
 Lab File: BF093318.D
 Acq: 2 Mar 2017 12:52

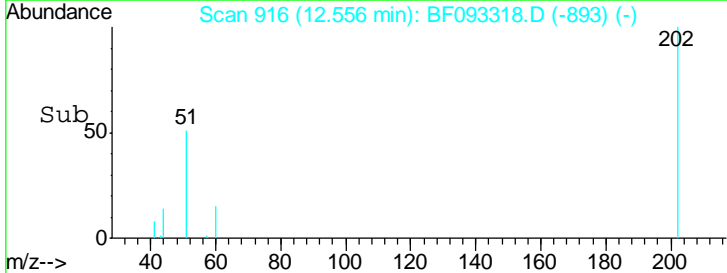
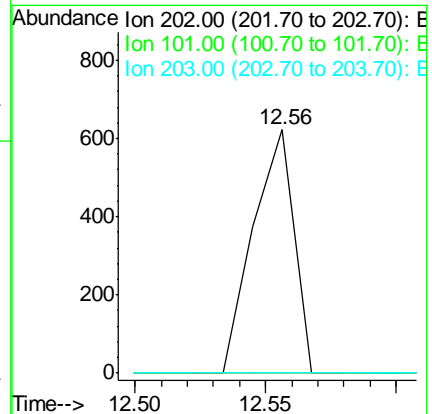
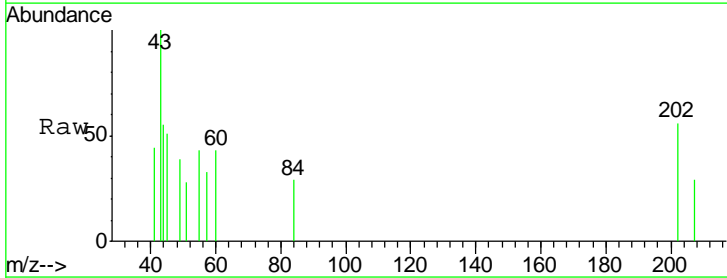
Instrument :
 BNA_F
 ClientSampleId :
 CPSIDW-1

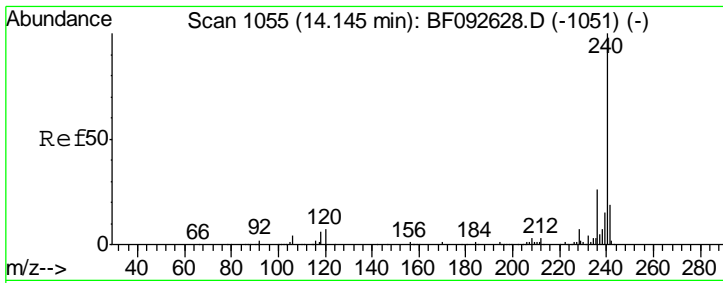
Tgt Ion	Resp	Lower	Upper
149	100		
150	10.1	8.1	12.1
104	0.0	4.6	7.0#



#74
 Fluoranthene
 Concen: 0.02 ng
 RT: 12.56 min Scan# 916
 Delta R.T. -0.03 min
 Lab File: BF093318.D
 Acq: 2 Mar 2017 12:52

Tgt Ion	Resp	Lower	Upper
202	100		
101	0.0	0.0	34.6
203	0.0	0.0	38.7

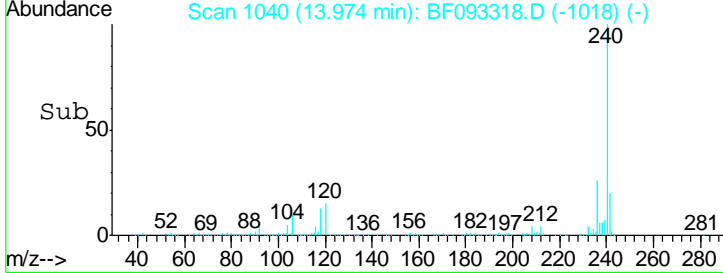
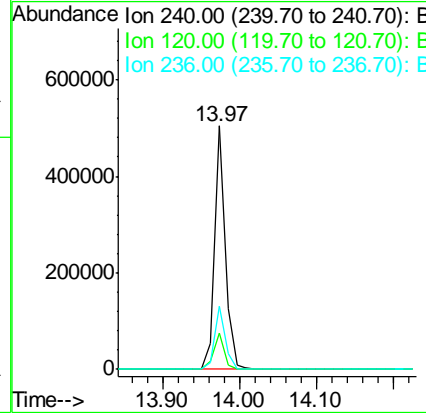
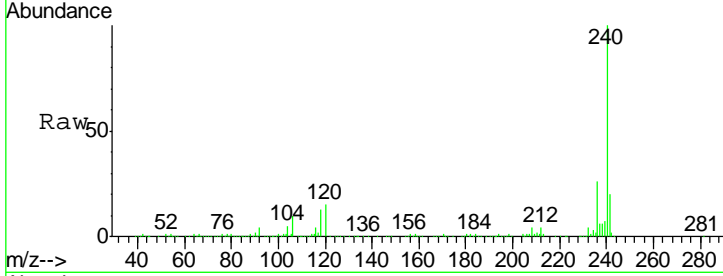




#75
 Chrysene-d12
 Concen: 20.00 ng
 RT: 13.97 min Scan# 1040
 Delta R.T. -0.05 min
 Lab File: BF093318.D
 Acq: 2 Mar 2017 12:52

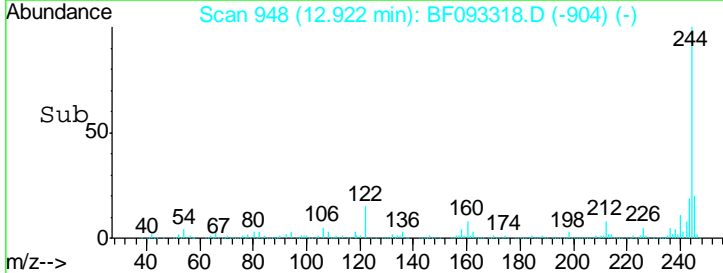
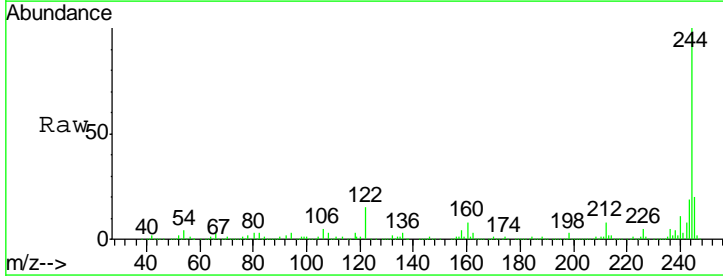
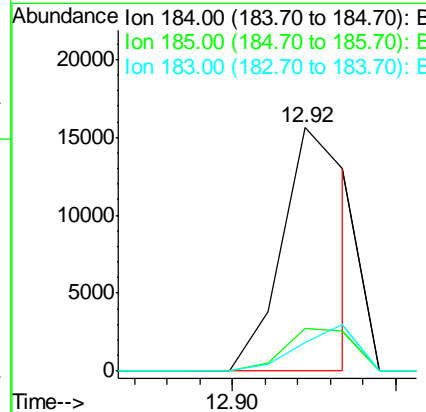
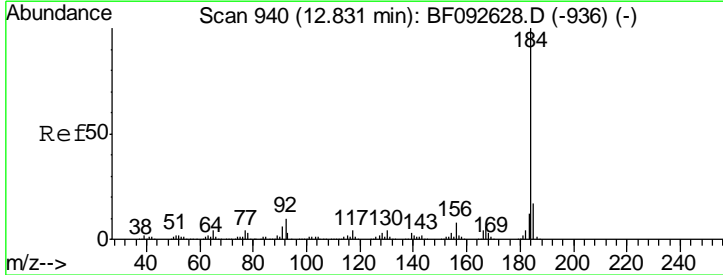
Instrument :
 BNA_F
ClientSampled :
 CPSIDW-1

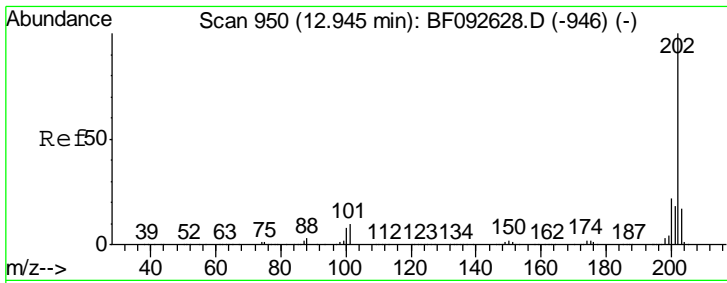
Tgt Ion	Resp	Lower	Upper
240	100		
120	15.1	12.9	19.3
236	25.9	20.9	31.3



#76
 Benzidine
 Concen: 1.08 ng
 RT: 12.92 min Scan# 948
 Delta R.T. 0.21 min
 Lab File: BF093318.D
 Acq: 2 Mar 2017 12:52

Tgt Ion	Resp	Lower	Upper
184	100		
185	17.4	13.4	20.0
183	11.8	9.2	13.8

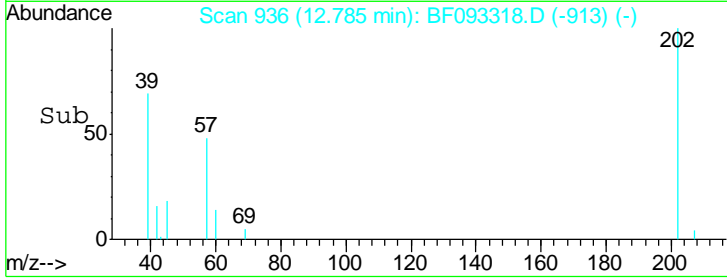
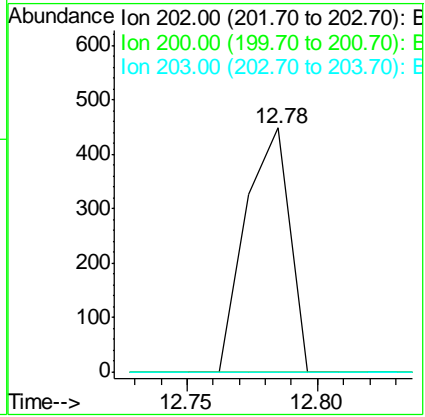
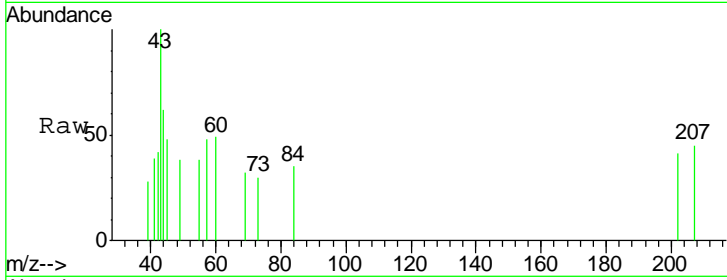




#77
 Pyrene
 Concen: 0.01 ng
 RT: 12.78 min Scan# 936
 Delta R.T. -0.03 min
 Lab File: BF093318.D
 Acq: 2 Mar 2017 12:52

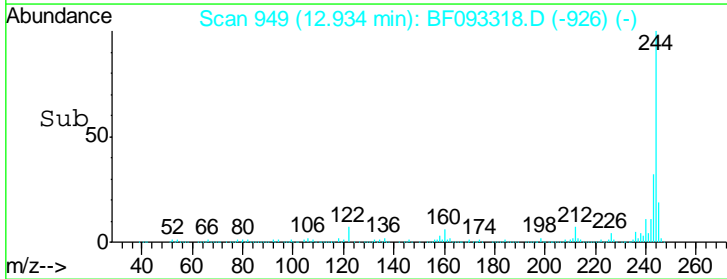
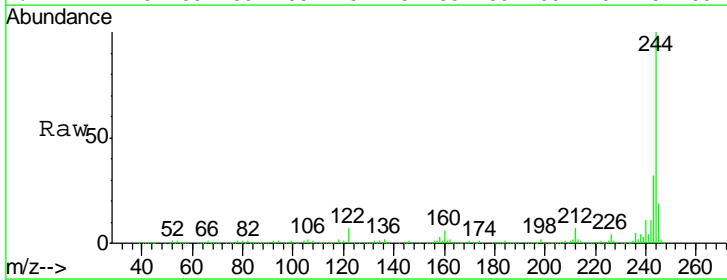
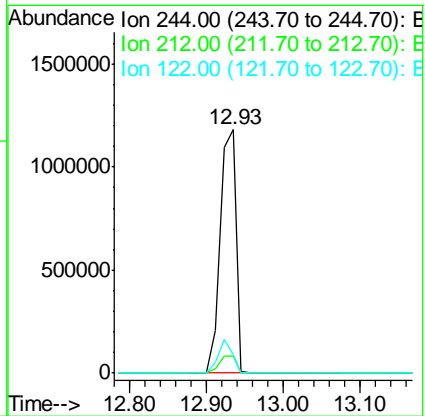
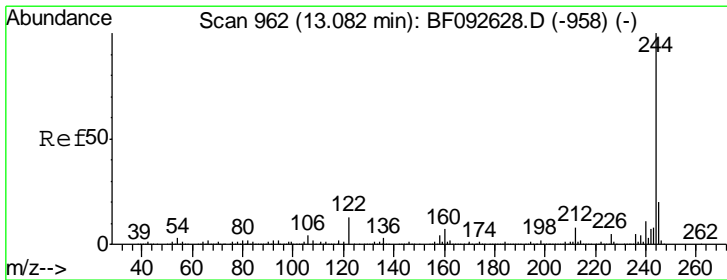
Instrument :
 BNA_F
ClientSampleId :
 CPSIDW-1

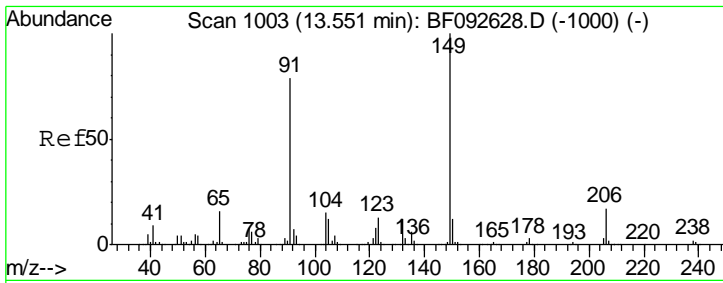
Tgt Ion	Resp	Lower	Upper
202	100		
200	0.0	17.7	26.5#
203	0.0	14.7	22.1#



#78
 Terphenyl-d14
 Concen: 83.87 ng
 RT: 12.93 min Scan# 949
 Delta R.T. -0.03 min
 Lab File: BF093318.D
 Acq: 2 Mar 2017 12:52

Tgt Ion	Resp	Lower	Upper
244	100		
212	7.2	6.2	9.2
122	7.5	11.4	17.2#

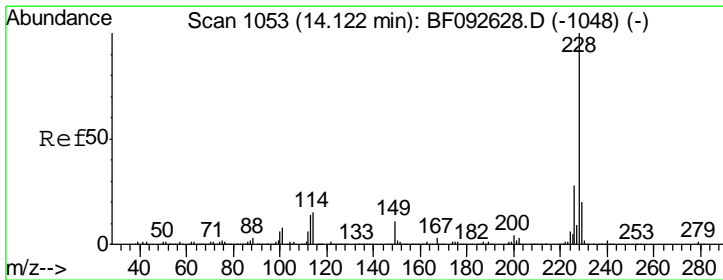
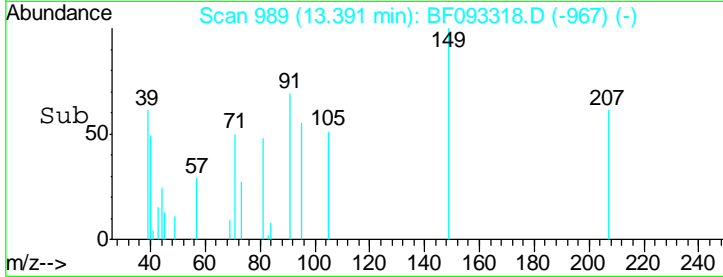
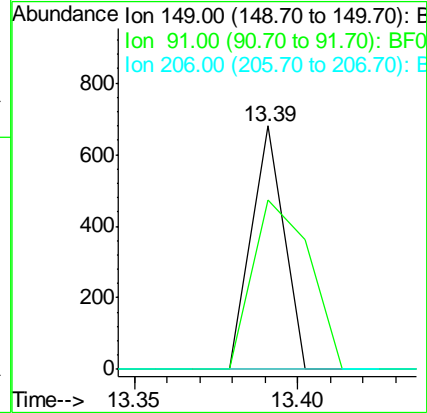
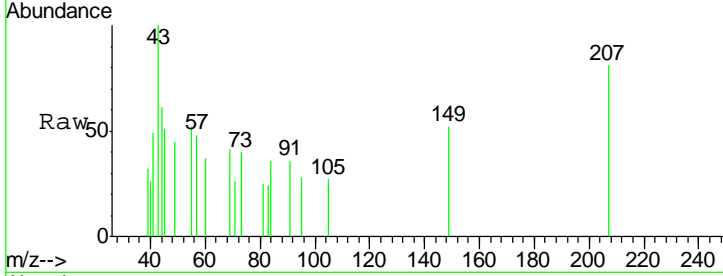




#79
 Butylbenzylphthalate
 Concen: 0.03 ng
 RT: 13.39 min Scan# 989
 Delta R.T. -0.05 min
 Lab File: BF093318.D
 Acq: 2 Mar 2017 12:52

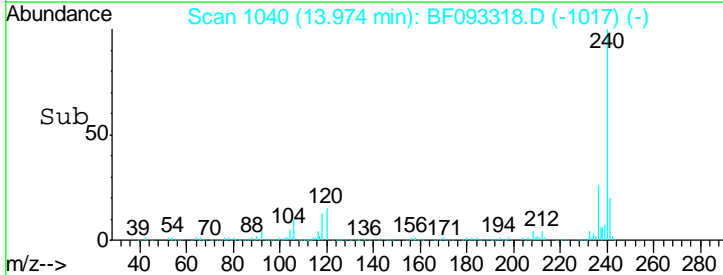
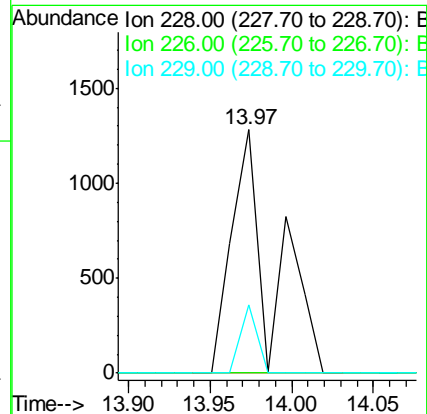
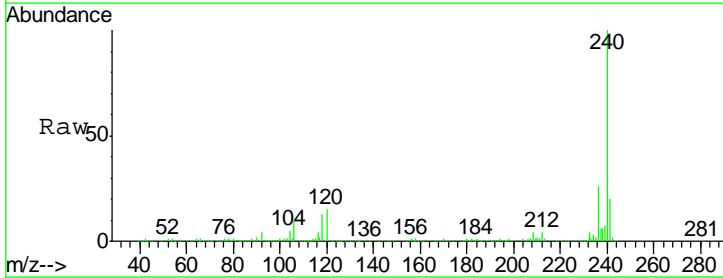
Instrument :
 BNA_F
 ClientSampleID :
 CPSIDW-1

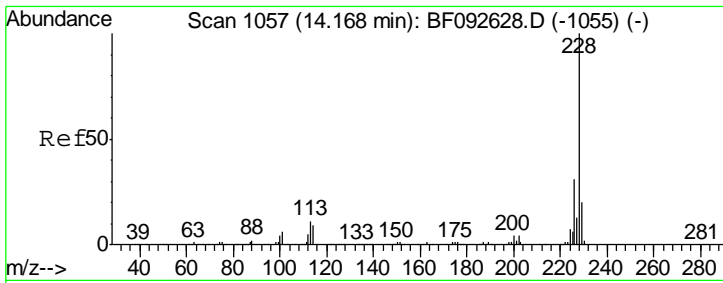
Tgt Ion	Resp	Lower	Upper
149	100		
91	69.4	63.9	95.9
206	0.0	14.6	21.8#



#80
 Benzo(a)anthracene
 Concen: 0.07 ng
 RT: 13.97 min Scan# 1040
 Delta R.T. -0.03 min
 Lab File: BF093318.D
 Acq: 2 Mar 2017 12:52

Tgt Ion	Resp	Lower	Upper
228	100		
226	0.0	22.4	33.6#
229	28.3	16.2	24.4#

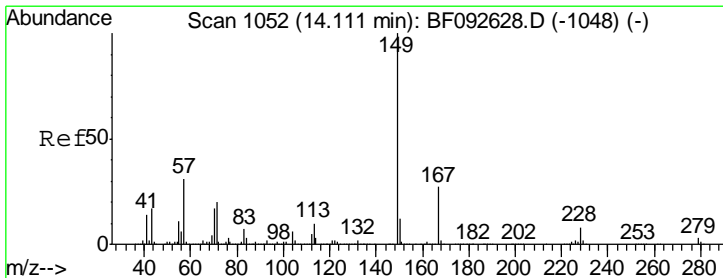
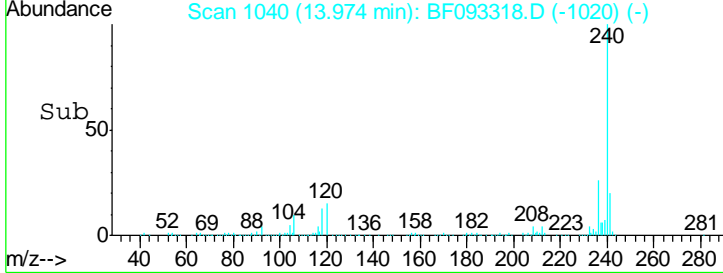
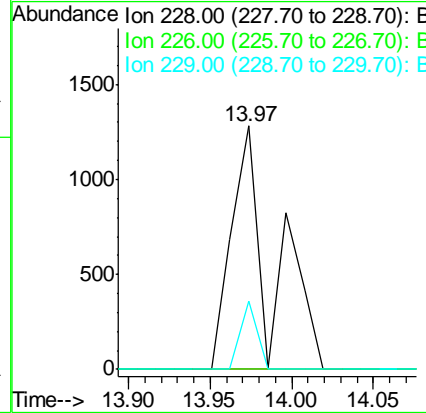
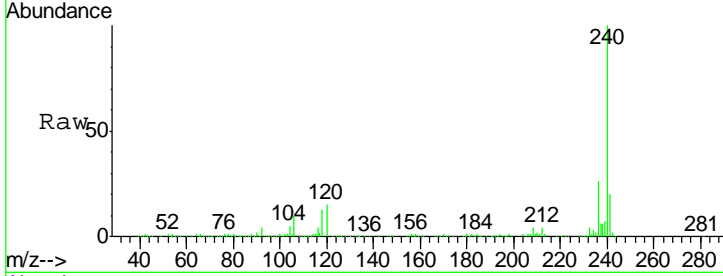




#82
 Chrysene
 Concen: 0.08 ng
 RT: 13.97 min Scan# 1040
 Delta R.T. -0.07 min
 Lab File: BF093318.D
 Acq: 2 Mar 2017 12:52

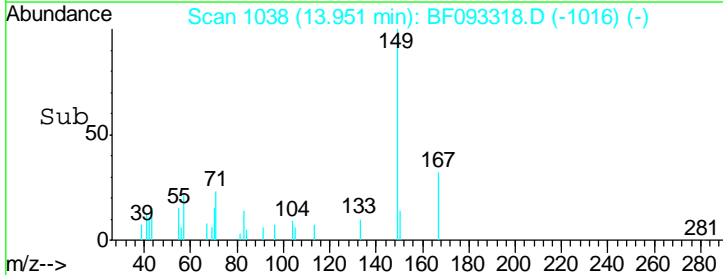
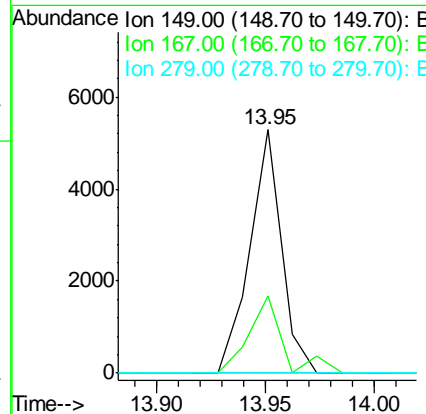
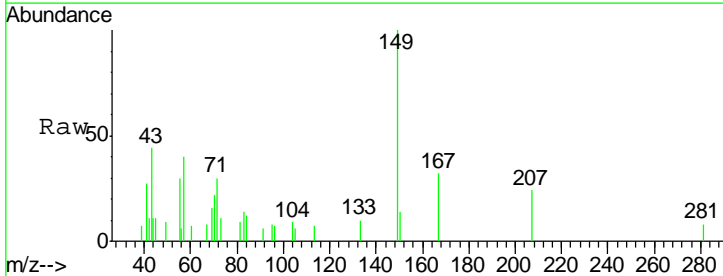
Instrument :
 BNA_F
 ClientSampled :
 CPSIDW-1

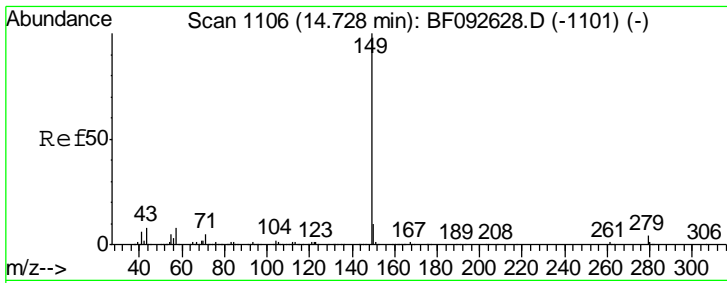
Tgt Ion	Resp	Lower	Upper
228	100		
226	0.0	25.4	38.0#
229	28.3	16.2	24.2#



#83
 Bis(2-ethylhexyl)phthalate
 Concen: 0.27 ng
 RT: 13.95 min Scan# 1038
 Delta R.T. -0.05 min
 Lab File: BF093318.D
 Acq: 2 Mar 2017 12:52

Tgt Ion	Resp	Lower	Upper
149	100		
167	31.8	20.2	30.4#
279	0.0	1.8	2.8#

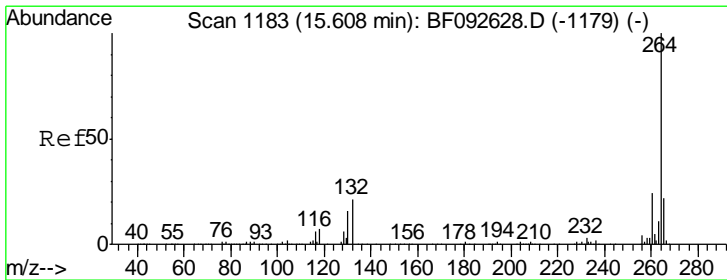
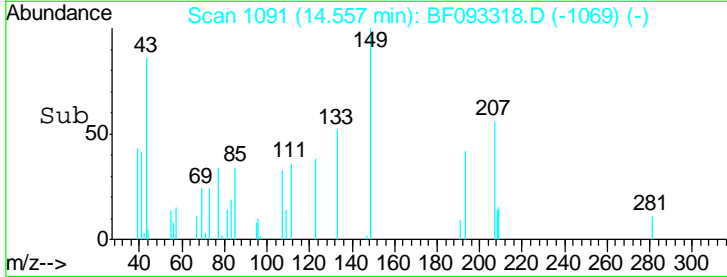
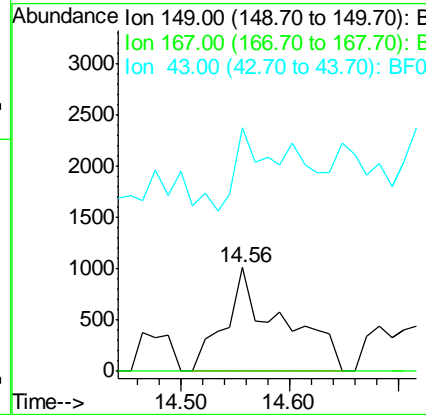
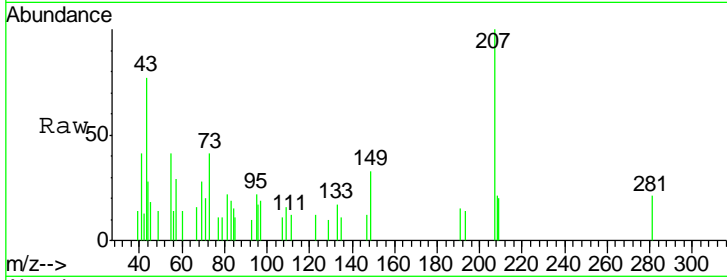




#84
 Di-n-octyl phthalate
 Concen: 0.11 ng
 RT: 14.56 min Scan# 1091
 Delta R.T. -0.05 min
 Lab File: BF093318.D
 Acq: 2 Mar 2017 12:52

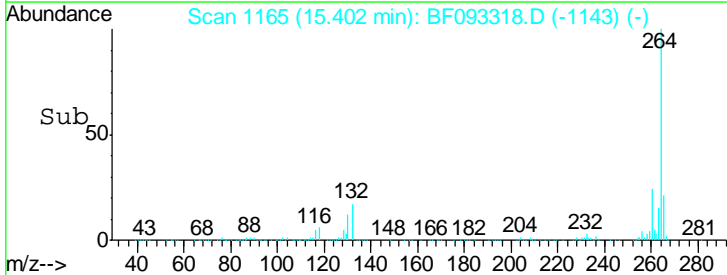
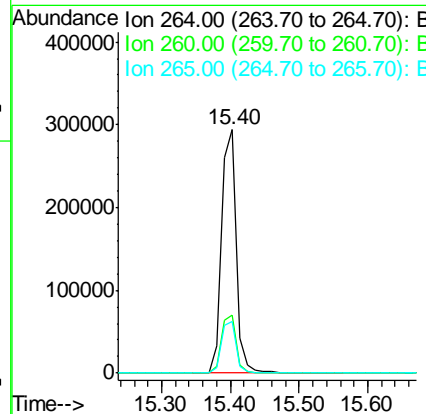
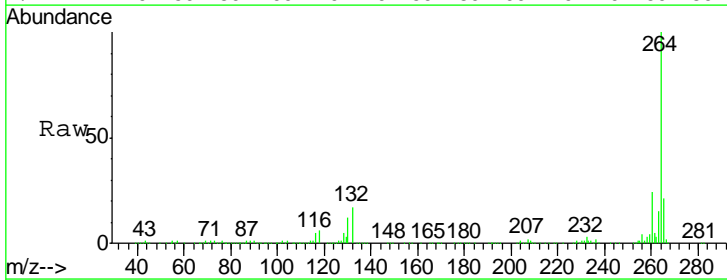
Instrument :
 BNA_F
 ClientSampled :
 CPSIDW-1

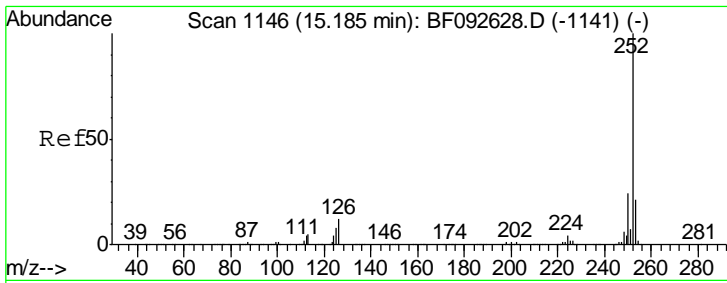
Tgt Ion	Resp	Lower	Upper
149	100		
167	0.0	1.3	1.9#
43	45.4	8.9	13.3#



#86
 Perylene-d12
 Concen: 20.00 ng
 RT: 15.40 min Scan# 1165
 Delta R.T. -0.05 min
 Lab File: BF093318.D
 Acq: 2 Mar 2017 12:52

Tgt Ion	Resp	Lower	Upper
264	100		
260	23.8	19.2	28.8
265	21.3	17.4	26.0

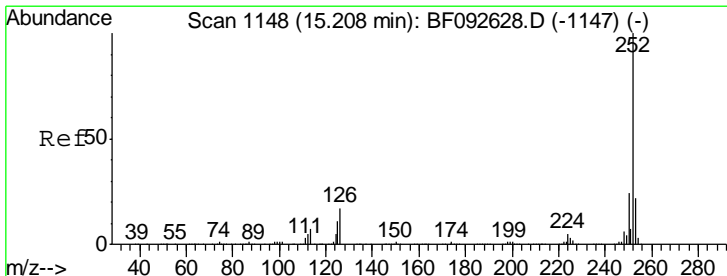
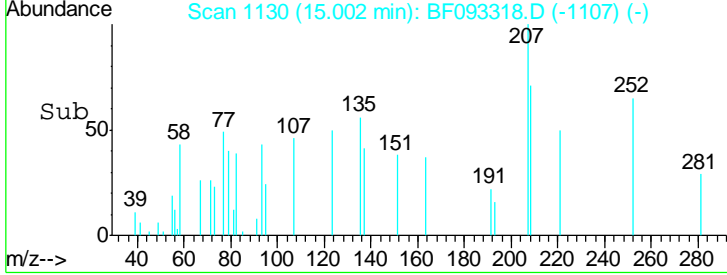
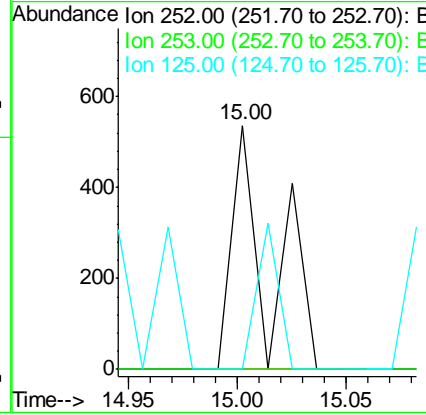
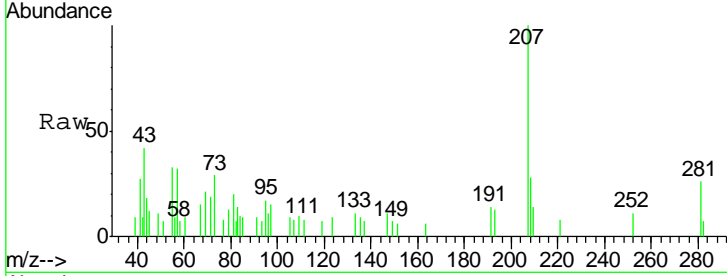




#87
 Benzo(b)fluoranthene
 Concen: 0.02 ng
 RT: 15.00 min Scan# 1130
 Delta R.T. -0.03 min
 Lab File: BF093318.D
 Acq: 2 Mar 2017 12:52

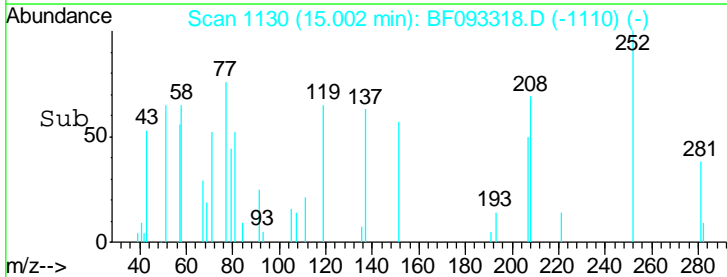
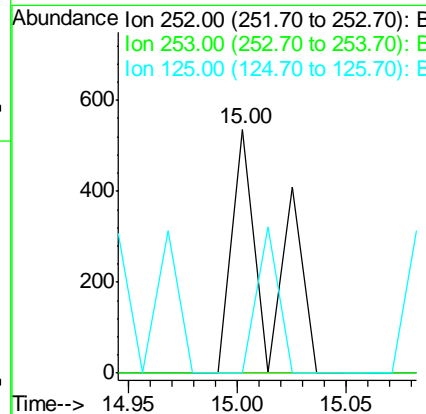
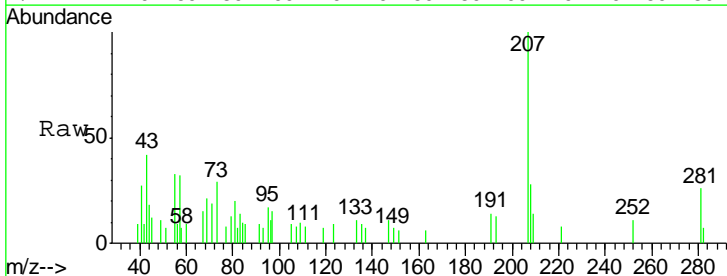
Instrument :
 BNA_F
 ClientSampleId :
 CPSIDW-1

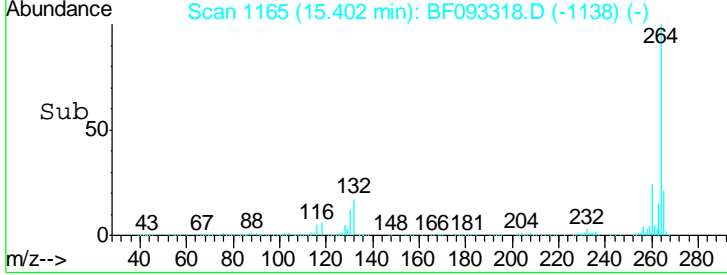
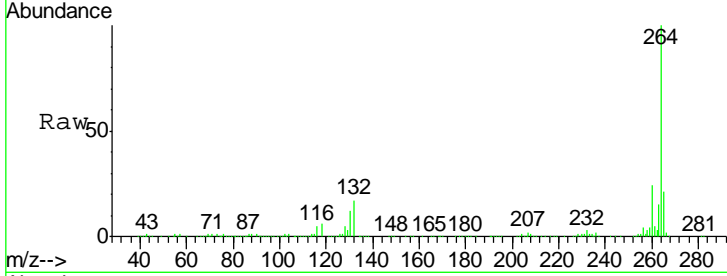
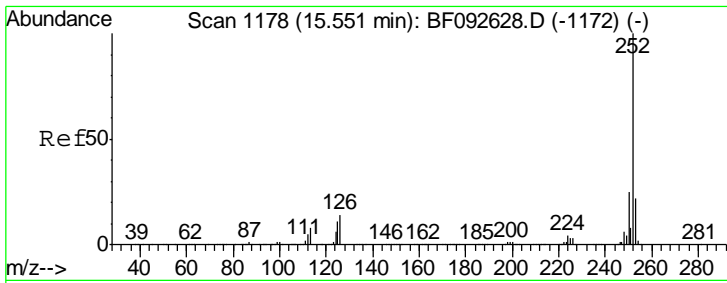
Tgt Ion	Resp	Lower	Upper
252	100		
253	0.0	18.2	27.4#
125	0.0	9.8	14.6#



#88
 Benzo(k)fluoranthene
 Concen: 0.03 ng
 RT: 15.00 min Scan# 1130
 Delta R.T. -0.07 min
 Lab File: BF093318.D
 Acq: 2 Mar 2017 12:52

Tgt Ion	Resp	Lower	Upper
252	100		
253	0.0	18.5	27.7#
125	0.0	8.9	13.3#





#89
 Benzo(a)pyrene
 Concen: 0.06 ng
 RT: 15.40 min Scan# 1165
 Delta R.T. 0.01 min
 Lab File: BF093318.D
 Acq: 2 Mar 2017 12:52

Instrument :
 BNA_F
 ClientSampleId :
 CPSIDW-1

Tgt Ion	Resp	Lower	Upper
252	1439		
253	43.8	18.2	27.2#
125	33.2	10.0	15.0#

