

Data Path : Z:\HPCHEM1\BNA\_F\DATA\BF030217\  
 Data File : BF093329.D  
 Acq On : 2 Mar 2017 19:10  
 Operator : SJ/MA  
 Sample : I2052-03  
 Misc :  
 ALS Vial : 14 Sample Multiplier: 1

Instrument :  
 BNA\_F  
 ClientSampleId :  
 CPS133051

Quant Time: Mar 03 00:15:39 2017  
 Quant Method : Z:\HPCHEM1\BNA\_F\METHODS\8270-BF013017.M  
 Quant Title : ASP BNA STANDARDS FOR 5 POINT CALIBRATION  
 QLast Update : Fri Feb 17 17:31:55 2017  
 Response via : Initial Calibration

Internal Standards	R.T.	QIon	Response	Conc	Units	Dev(Min)
1) 1,4-Dichlorobenzene-d4	6.80	152	138833	20.00	ng	-0.06
21) Naphthalene-d8	8.09	136	584613	20.00	ng	-0.06
38) Acenaphthene-d10	9.85	164	279546	20.00	ng	-0.05
63) Phenanthrene-d10	11.35	188	525510	20.00	ng	-0.03
75) Chrysene-d12	13.97	240	426212	20.00	ng	-0.05
86) Perylene-d12	15.39	264	289493	20.00	ng	-0.06

## System Monitoring Compounds

5) 2-Fluorophenol	5.39	112	636231	78.62	ng	-0.06
7) Phenol-d6	6.44	99	530760	50.98	ng	-0.05
23) Nitrobenzene-d5	7.37	82	973868	92.77	ng	-0.06
41) 2,4,6-Tribromophenol	10.65	330	286386	141.65	ng	-0.03
44) 2-Fluorobiphenyl	9.17	172	1570927	101.81	ng	-0.05
78) Terphenyl-d14	12.92	244	1461434	80.57	ng	-0.05

## Target Compounds

Target Compounds	R.T.	QIon	Response	Conc	Units	Qvalue
6) Aniline	6.48	93	239	0.02	ng	# 1
9) Benzaldehyde	6.44	77	708	0.09	ng	# 1
10) Phenol	6.45	94	9819	0.81	ng	86
11) bis(2-Chloroethyl)ether	6.57	93	1533	0.16	ng	# 1
12) 1,3-Dichlorobenzene	6.97	146	685	0.07	ng	# 1
13) 1,4-Dichlorobenzene	6.97	146	685	0.06	ng	# 13
14) 1,2-Dichlorobenzene	6.97	146	685	0.07	ng	# 15
15) Benzyl Alcohol	6.94	79	14398	1.87	ng	# 45
16) 2,2'-oxybis(1-Chloropropan	6.82	45	219	0.01	ng	67
17) 2-Methylphenol	7.28	107	462	0.06	ng	# 9
19) n-Nitroso-di-n-propylamine	7.37	70	129081	19.47	ng	# 82
20) 3+4-Methylphenols	7.28	107	462	0.05	ng	# 9
24) Nitrobenzene	7.37	77	2861	0.27	ng	# 36
25) Isophorone	7.37	82	756865	38.69	ng	# 65
28) bis(2-Chloroethoxy)methane	7.82	93	344	0.03	ng	# 1
31) Naphthalene	8.11	128	373	0.01	ng	# 68
35) Caprolactam	8.51	113	68197	25.83	ng	# 42
45) 1,1'-Biphenyl	9.28	154	2987	0.15	ng	88
47) 2-Nitroaniline	9.17	65	2498	0.47	ng	# 1
49) Dimethylphthalate	9.57	163	10822	0.57	ng	# 96
50) 2,6-Dinitrotoluene	9.85	165	36434	8.96	ng	# 31
51) Acenaphthene	9.85	154	869	0.05	ng	# 5
56) 2,4-Dinitrotoluene	9.85	165	36435	6.73	ng	# 20
59) Diethylphthalate	10.27	149	3720	0.21	ng	97
62) Azobenzene	10.56	77	805	0.04	ng	# 32
64) 4,6-Dinitro-2-methylphenol	10.65	198	898	2.93	ng	# 1
65) n-Nitrosodiphenylamine	10.65	169	10933	0.65	ng	# 41
66) 4-Bromophenyl-phenylether	10.65	248	22535	4.10	ng	# 1
70) Phenanthrene	11.37	178	664	0.02	ng	# 58
71) Anthracene	11.43	178	416	0.01	ng	# 59
73) Di-n-butylphthalate	11.91	149	4101	0.13	ng	# 92
74) Fluoranthene	12.57	202	831	0.03	ng	61
76) Benzidine	12.92	184	18451	1.02	ng	99
77) Pyrene	12.79	202	724	0.02	ng	# 56

Data Path : Z:\HPCHEM1\BNA\_F\DATA\BF030217\  
 Data File : BF093329.D  
 Acq On : 2 Mar 2017 19:10  
 Operator : SJ/MA  
 Sample : I2052-03  
 Misc :  
 ALS Vial : 14 Sample Multiplier: 1

Instrument :  
 BNA\_F  
 ClientSampleId :  
 CPS133051

Quant Time: Mar 03 00:15:39 2017  
 Quant Method : Z:\HPCHEM1\BNA\_F\METHODS\8270-BF013017.M  
 Quant Title : ASP BNA STANDARDS FOR 5 POINT CALIBRATION  
 QLast Update : Fri Feb 17 17:31:55 2017  
 Response via : Initial Calibration

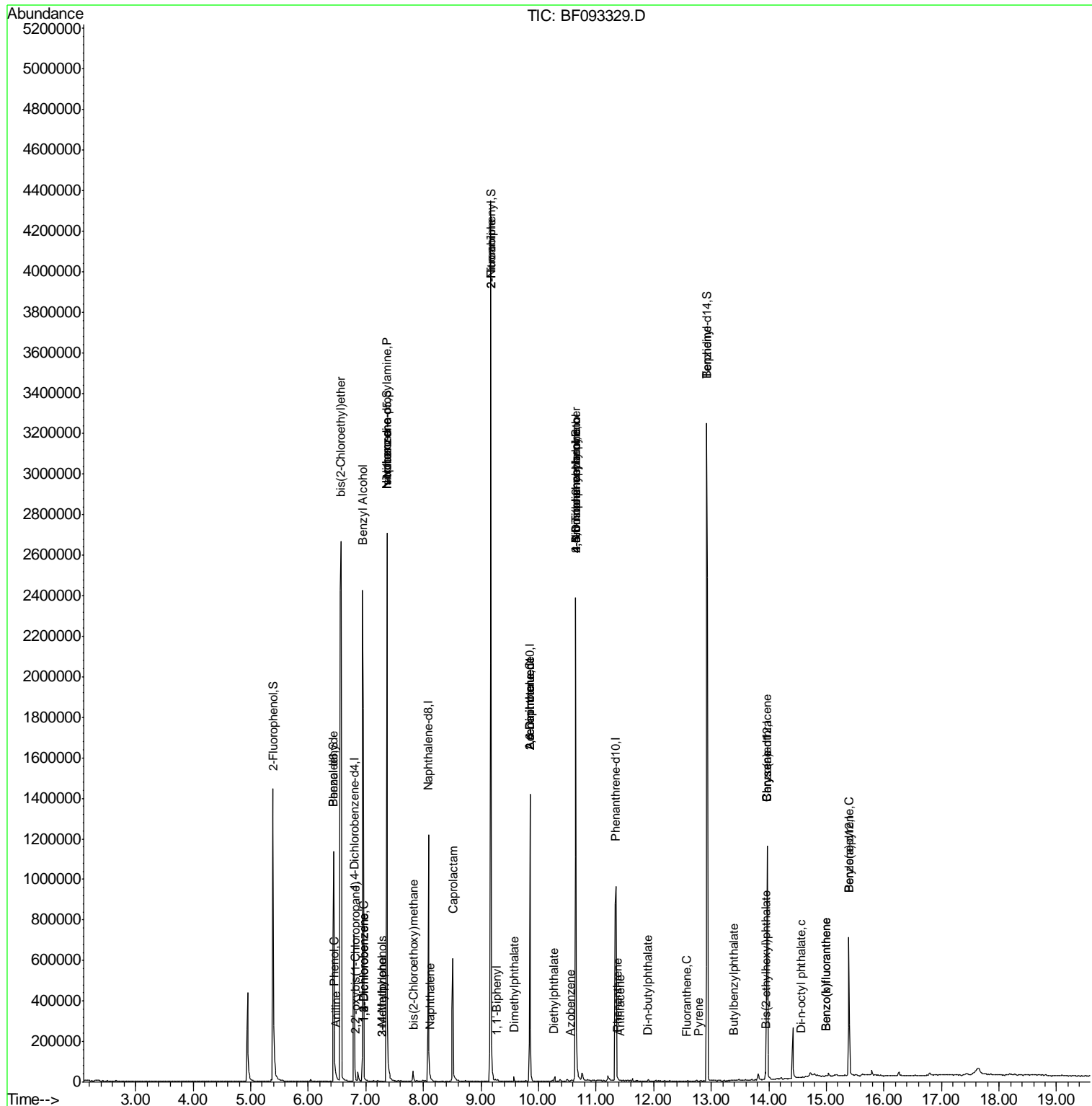
Internal Standards	R.T.	QIon	Response	Conc	Units	Dev(Min)
79) Butylbenzylphthalate	13.39	149	390	0.03	ng	# 68
80) Benzo(a)anthracene	13.97	228	2056	0.08	ng	# 47
82) Chrysene	13.97	228	2056	0.08	ng	# 44
83) Bis(2-ethylhexyl)phthalate	13.95	149	13282	0.75	ng	# 86
84) Di-n-octyl phthalate	14.56	149	927	0.03	ng	# 20
87) Benzo(b)fluoranthene	14.99	252	702	0.04	ng	# 58
88) Benzo(k)fluoranthene	14.99	252	702	0.04	ng	# 58
89) Benzo(a)pyrene	15.39	252	1056	0.06	ng	# 29

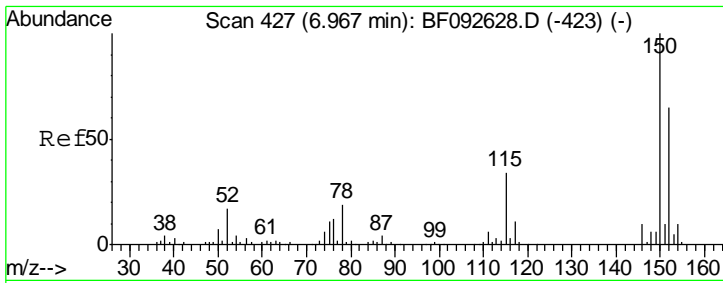
(#) = qualifier out of range (m) = manual integration (+) = signals summed

Data Path : Z:\HPCHEM1\BNA\_F\DATA\BF030217\  
 Data File : BF093329.D  
 Acq On : 2 Mar 2017 19:10  
 Operator : SJ/MA  
 Sample : I2052-03  
 Misc :  
 ALS Vial : 14 Sample Multiplier: 1

Instrument :  
 BNA\_F  
 ClientSampled :  
 CPS133051

Quant Time: Mar 03 00:15:39 2017  
 Quant Method : Z:\HPCHEM1\BNA\_F\METHODS\8270-BF013017.M  
 Quant Title : ASP BNA STANDARDS FOR 5 POINT CALIBRATION  
 QLast Update : Fri Feb 17 17:31:55 2017  
 Response via : Initial Calibration

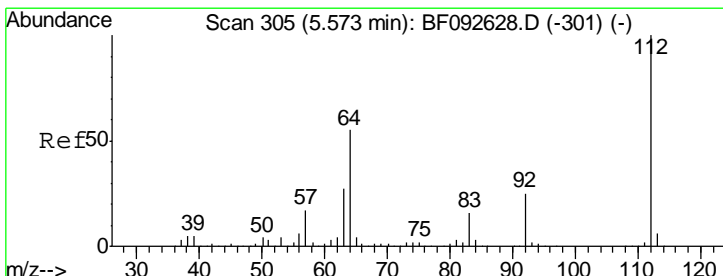
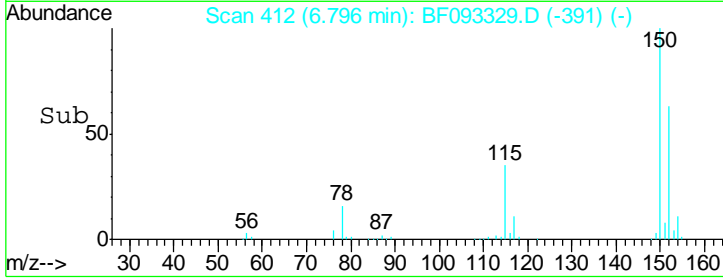
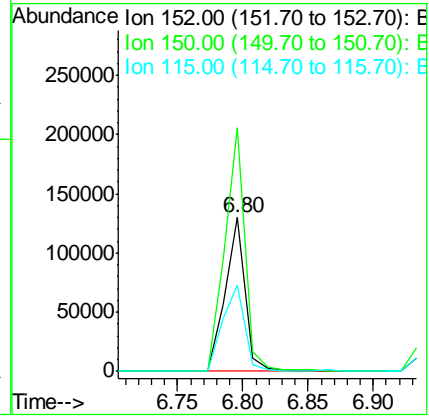
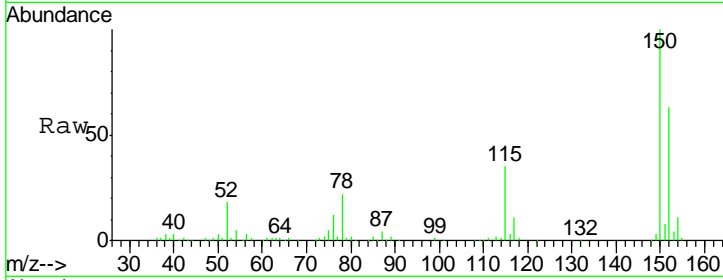




#1  
 1,4-Dichlorobenzene-d4  
 Concen: 20.00 ng  
 RT: 6.80 min Scan# 412  
 Delta R.T. -0.06 min  
 Lab File: BF093329.D  
 Acq: 2 Mar 2017 19:10

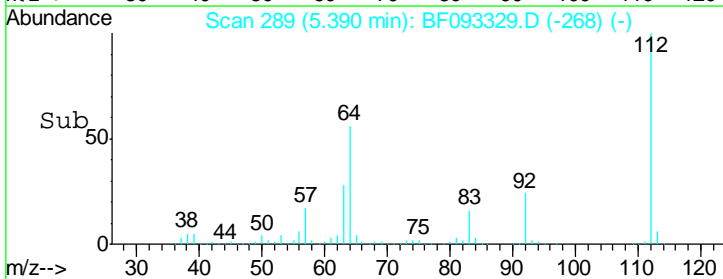
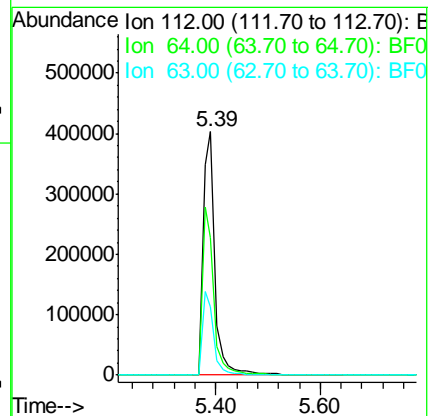
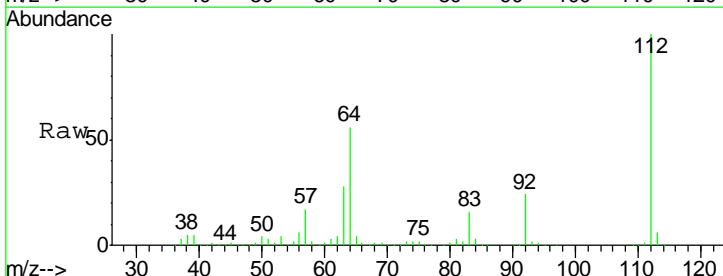
**Instrument :**  
 BNA\_F  
**ClientSampled :**  
 CPS133051

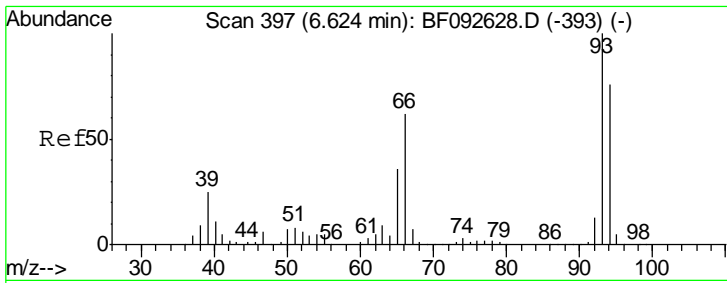
Tgt Ion	Resp	Lower	Upper
152	138833		
150	158.4	124.9	187.3
115	56.1	46.0	69.0



#5  
 2-Fluorophenol  
 Concen: 78.62 ng  
 RT: 5.39 min Scan# 289  
 Delta R.T. -0.06 min  
 Lab File: BF093329.D  
 Acq: 2 Mar 2017 19:10

Tgt Ion	Resp	Lower	Upper
112	636231		
64	56.3	46.1	69.1
63	28.1	23.8	35.6

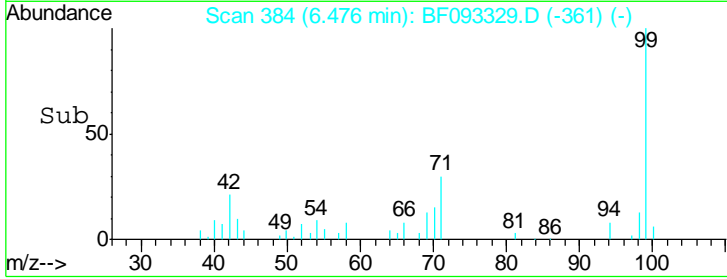
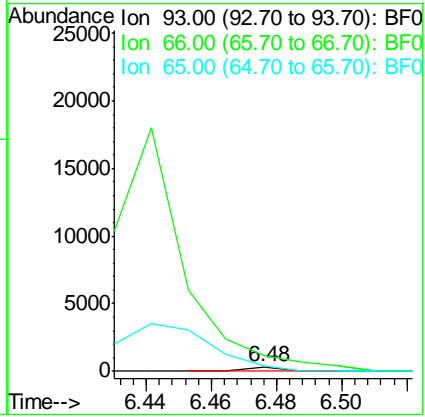
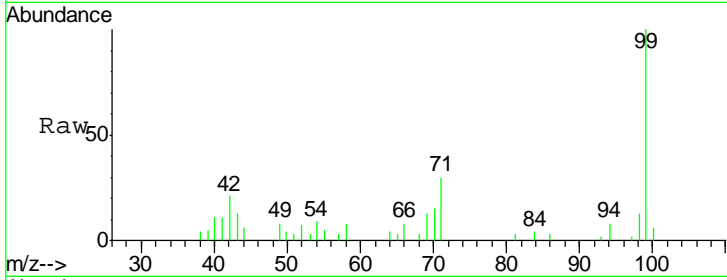




#6  
 Aniline  
 Concen: 0.02 ng  
 RT: 6.48 min Scan# 384  
 Delta R.T. -0.03 min  
 Lab File: BF093329.D  
 Acq: 2 Mar 2017 19:10

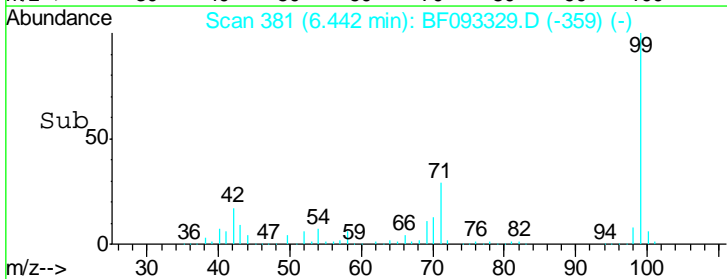
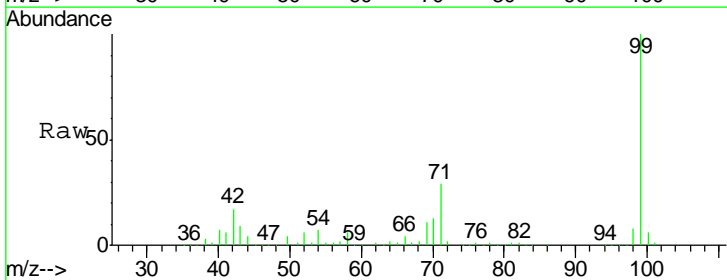
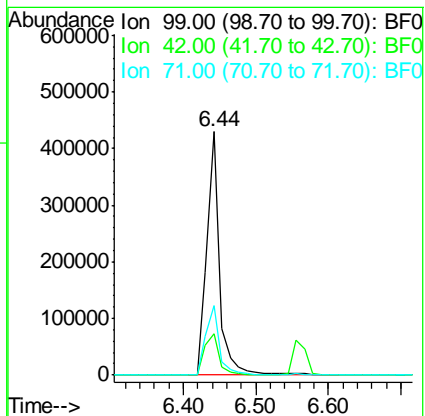
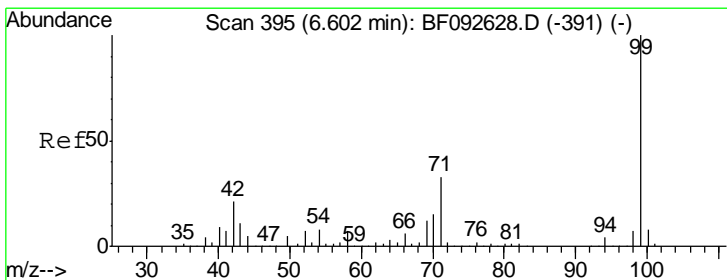
**Instrument :**  
 BNA\_F  
**ClientSampled :**  
 CPS133051

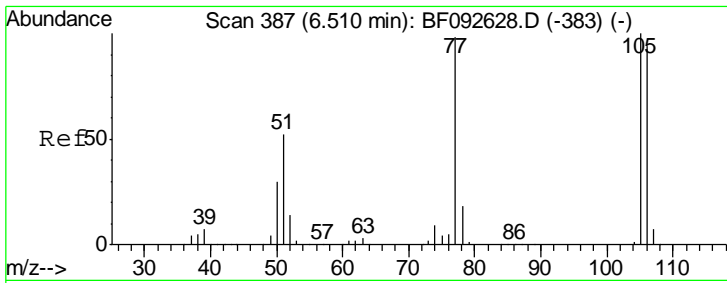
Tgt Ion	Resp	Lower	Upper
93	239		
66	331.8	76.2	114.2#
65	112.9	49.3	73.9#



#7  
 Phenol-d6  
 Concen: 50.98 ng  
 RT: 6.44 min Scan# 381  
 Delta R.T. -0.05 min  
 Lab File: BF093329.D  
 Acq: 2 Mar 2017 19:10

Tgt Ion	Resp	Lower	Upper
99	530760		
42	16.8	15.6	23.4
71	28.6	27.5	41.3

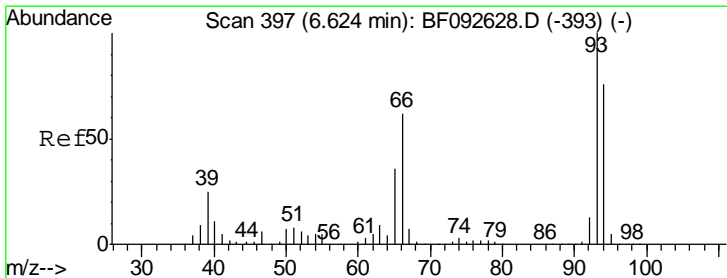
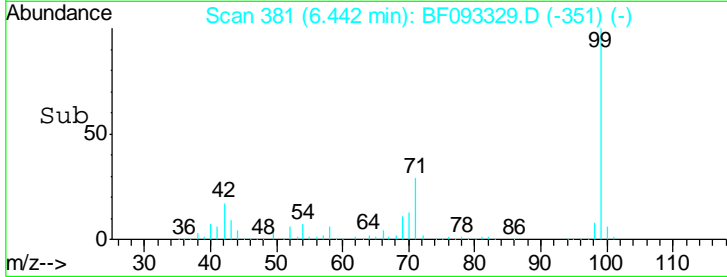
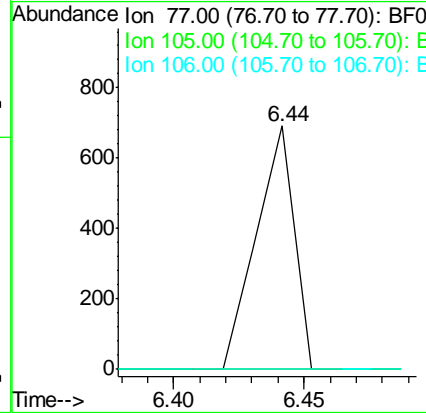
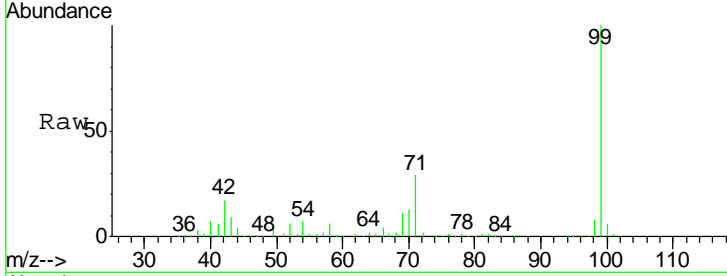




#9  
Benzaldehyde  
Concen: 0.09 ng  
RT: 6.44 min Scan# 381  
Delta R.T. 0.05 min  
Lab File: BF093329.D  
Acq: 2 Mar 2017 19:10

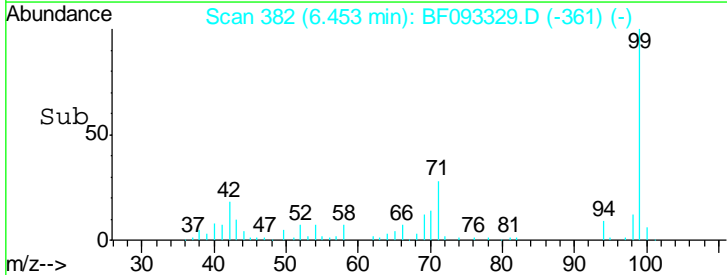
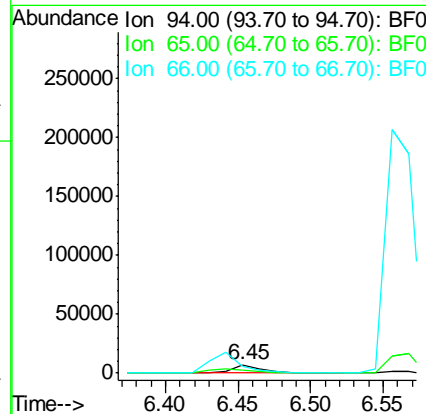
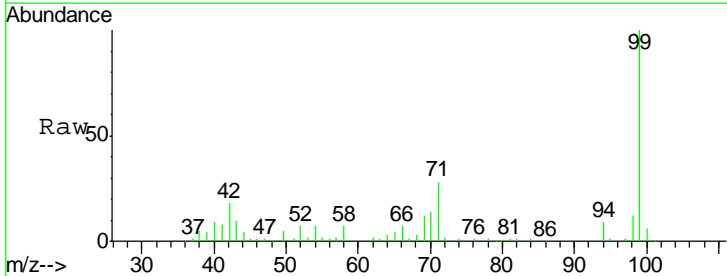
Instrument :  
BNA\_F  
ClientSampled :  
CPS133051

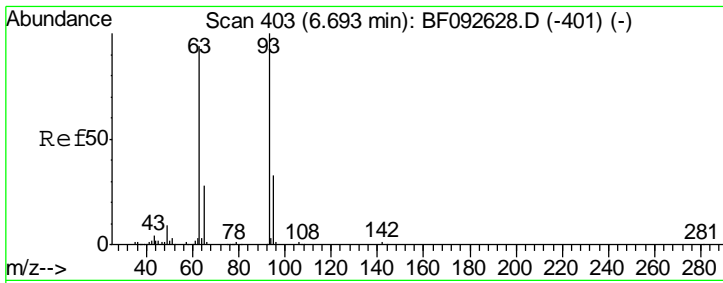
Tgt Ion	Resp	Lower	Upper
77	100		
105	0.0	83.9	123.9#
106	0.0	77.6	117.6#



#10  
Phenol  
Concen: 0.81 ng  
RT: 6.45 min Scan# 382  
Delta R.T. -0.06 min  
Lab File: BF093329.D  
Acq: 2 Mar 2017 19:10

Tgt Ion	Resp	Lower	Upper
94	100		
65	41.0	21.4	61.4
66	81.1	44.0	84.0

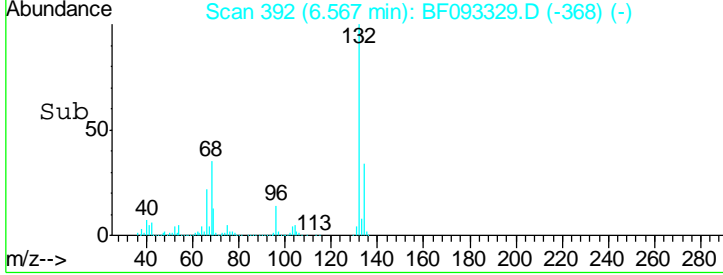
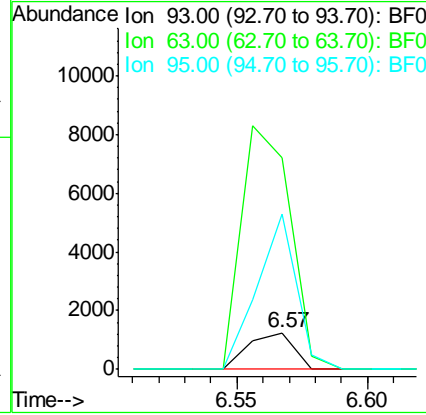
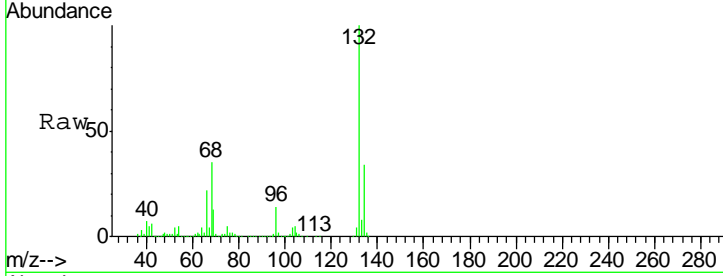




#11  
 bis(2-Chloroethyl)ether  
 Concen: 0.16 ng  
 RT: 6.57 min Scan# 392  
 Delta R.T. -0.02 min  
 Lab File: BF093329.D  
 Acq: 2 Mar 2017 19:10

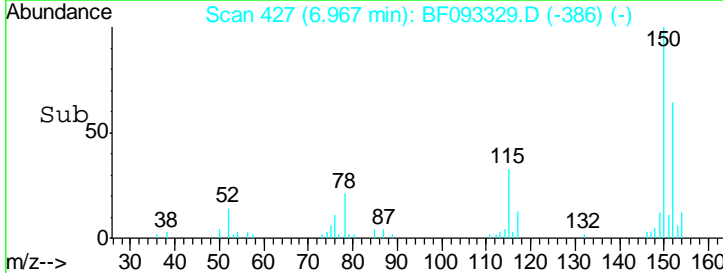
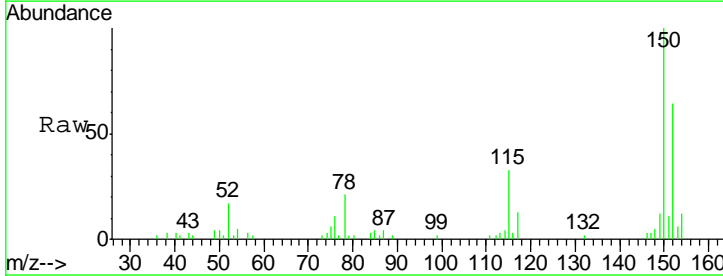
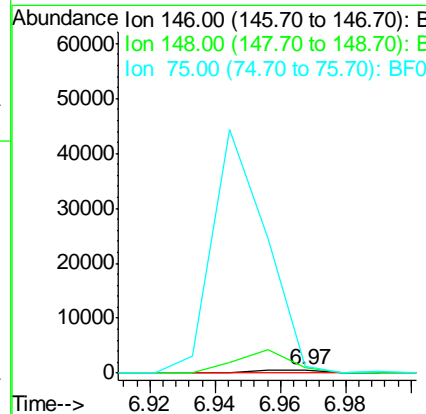
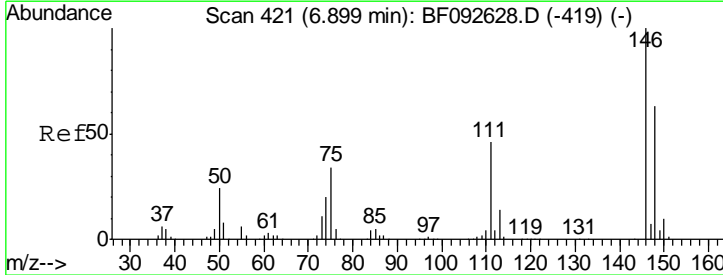
**Instrument :**  
 BNA\_F  
**ClientSampled :**  
 CPS133051

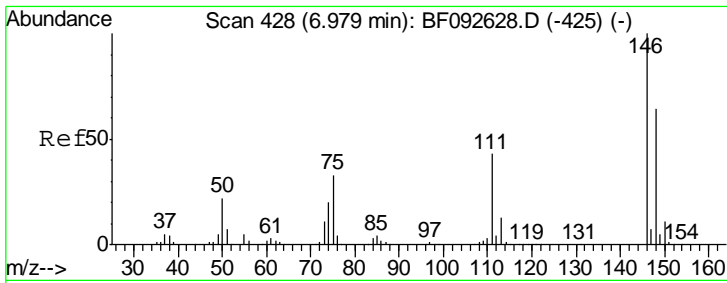
Tgt Ion	Resp	Lower	Upper
93	1533		
93	100		
63	574.3	60.4	100.4#
95	420.4	12.8	52.8#



#12  
 1,3-Dichlorobenzene  
 Concen: 0.07 ng  
 RT: 6.97 min Scan# 427  
 Delta R.T. 0.17 min  
 Lab File: BF093329.D  
 Acq: 2 Mar 2017 19:10

Tgt Ion	Resp	Lower	Upper
146	685		
146	100		
148	168.9	53.4	80.0#
75	223.2	18.5	27.7#

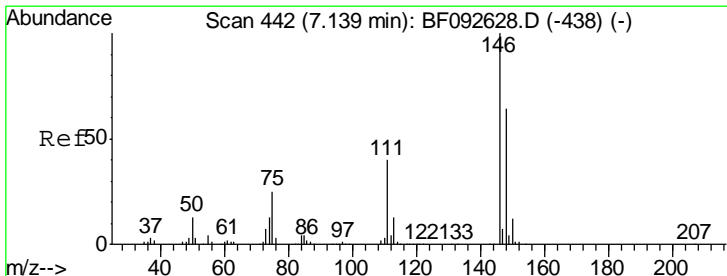
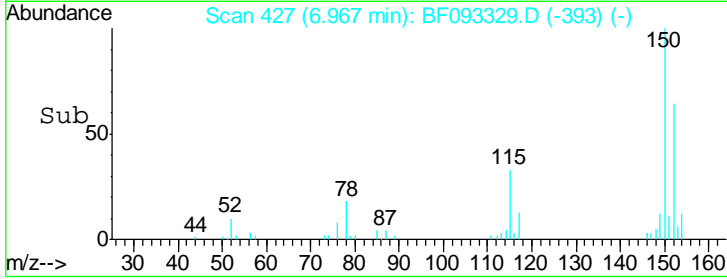
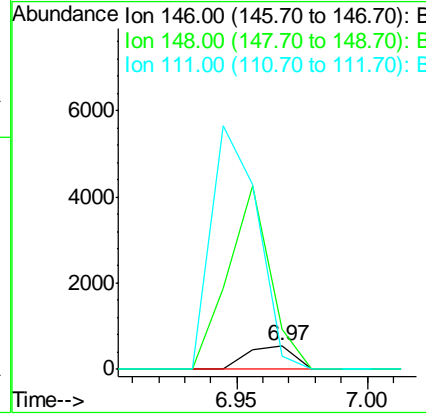
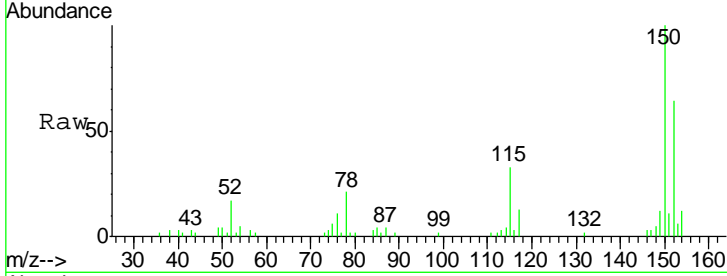




#13  
 1,4-Dichlorobenzene  
 Concen: 0.06 ng  
 RT: 6.97 min Scan# 427  
 Delta R.T. 0.09 min  
 Lab File: BF093329.D  
 Acq: 2 Mar 2017 19:10

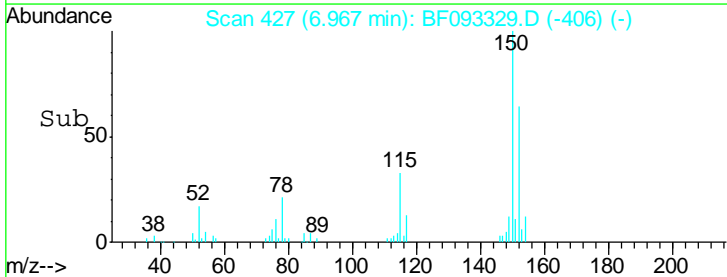
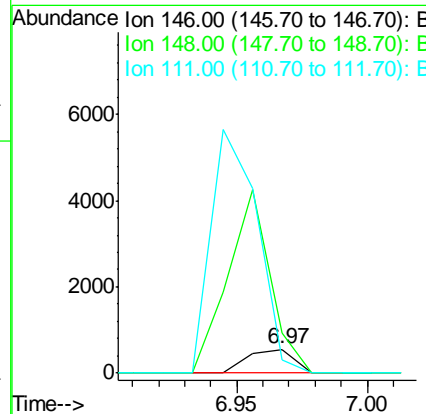
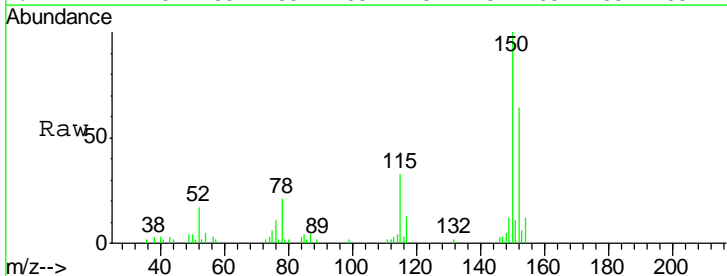
**Instrument :**  
 BNA\_F  
**ClientSampled :**  
 CPS133051

Tgt Ion	Resp	Lower	Upper
146	100		
148	168.9	50.6	76.0#
111	57.7	36.2	54.4#

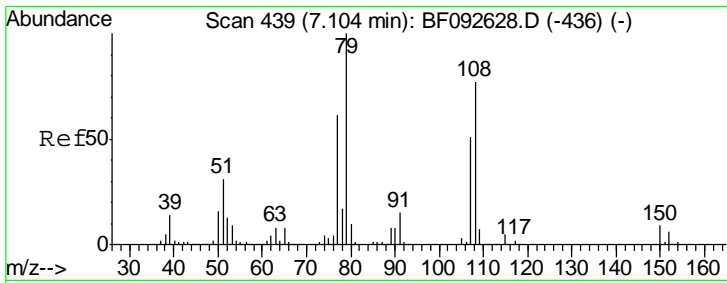


#14  
 1,2-Dichlorobenzene  
 Concen: 0.07 ng  
 RT: 6.97 min Scan# 427  
 Delta R.T. -0.06 min  
 Lab File: BF093329.D  
 Acq: 2 Mar 2017 19:10

Tgt Ion	Resp	Lower	Upper
146	100		
148	168.9	52.2	78.2#
111	57.7	36.2	54.2#



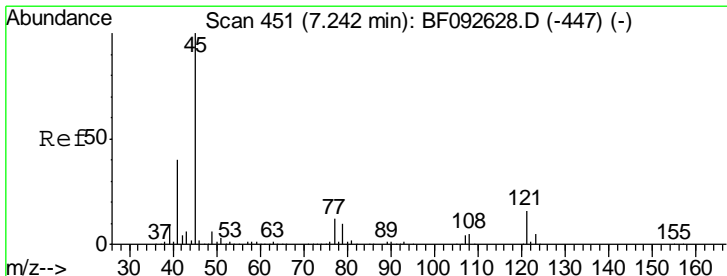
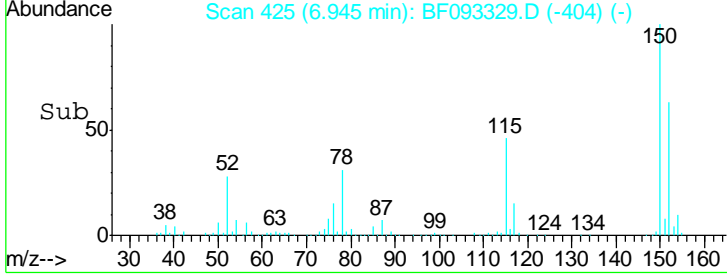
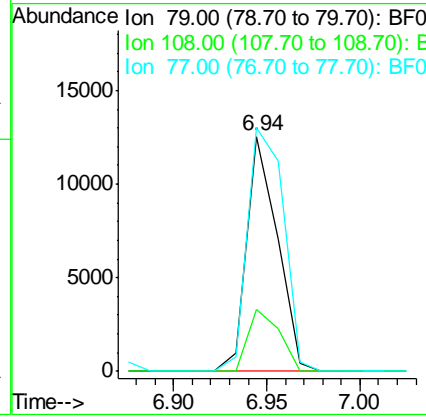
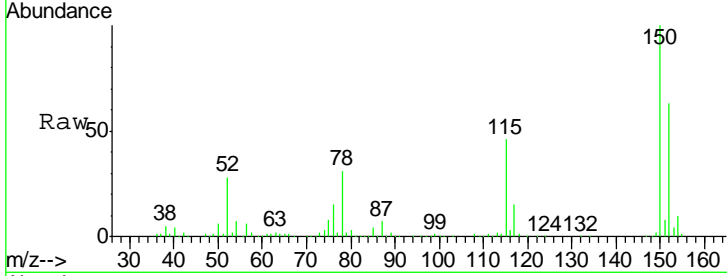




#15  
 Benzyl Alcohol  
 Concen: 1.87 ng  
 RT: 6.94 min Scan# 425  
 Delta R.T. -0.06 min  
 Lab File: BF093329.D  
 Acq: 2 Mar 2017 19:10

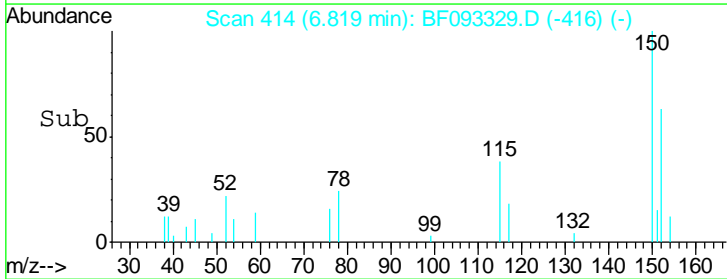
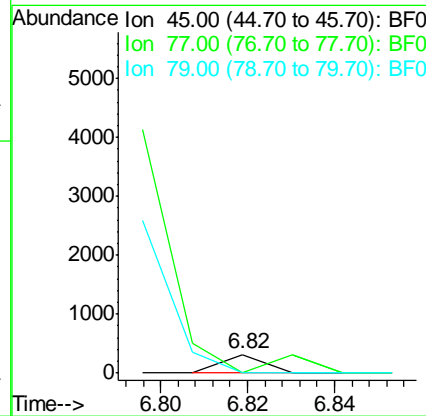
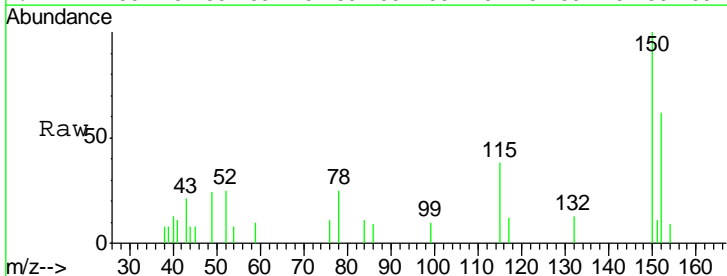
Instrument :  
 BNA\_F  
 ClientSampled :  
 CPS133051

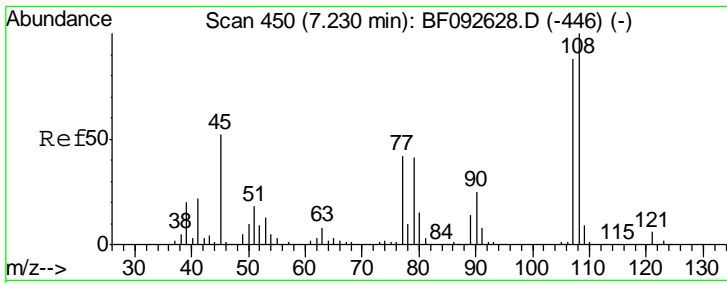
Tgt Ion	Resp	Lower	Upper
79	14398		
79	100		
108	26.3	61.4	92.0#
77	103.7	50.9	76.3#



#16  
 2,2'-oxybis(1-Chloropropane)  
 Concen: 0.01 ng  
 RT: 6.82 min Scan# 414  
 Delta R.T. -0.32 min  
 Lab File: BF093329.D  
 Acq: 2 Mar 2017 19:10

Tgt Ion	Resp	Lower	Upper
45	219		
45	100		
77	0.0	0.0	34.6
79	0.0	0.0	31.2

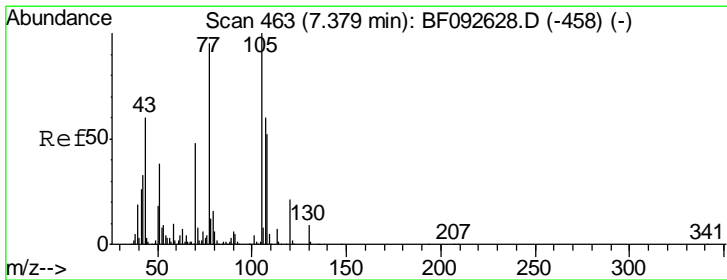
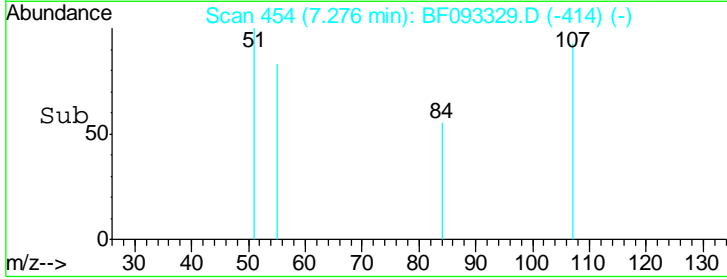
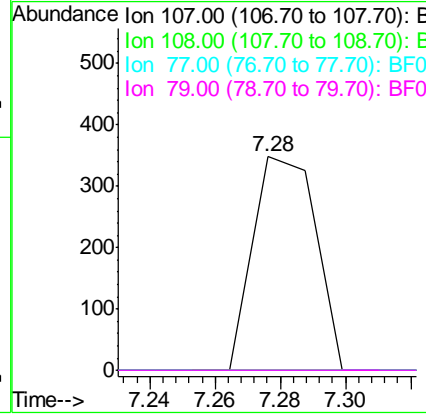
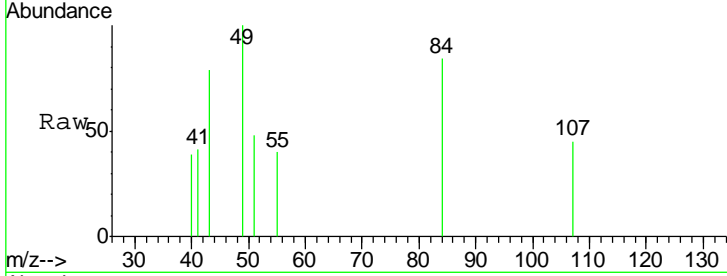




#17  
 2-Methylphenol  
 Concen: 0.06 ng  
 RT: 7.28 min Scan# 454  
 Delta R.T. 0.16 min  
 Lab File: BF093329.D  
 Acq: 2 Mar 2017 19:10

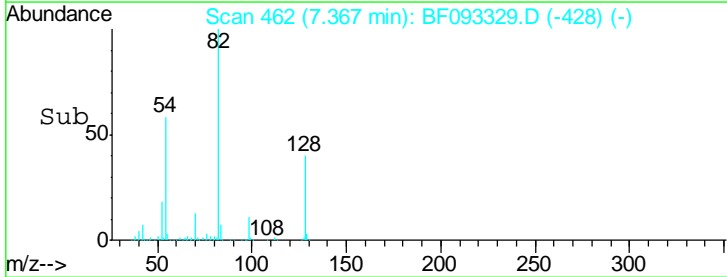
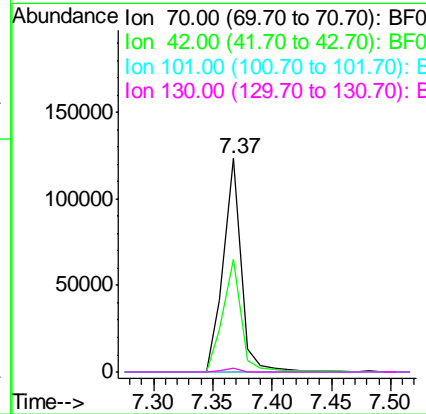
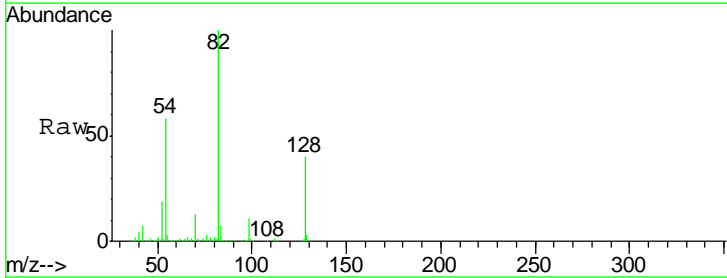
**Instrument :**  
 BNA\_F  
**ClientSampled :**  
 CPS133051

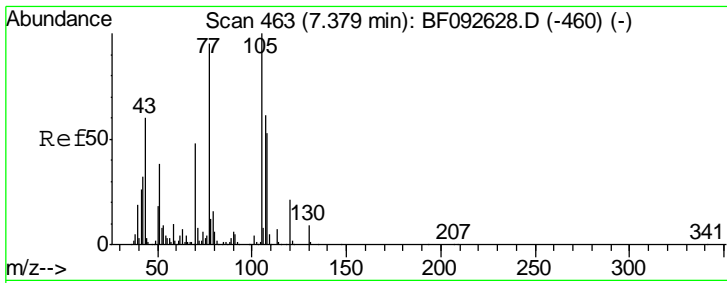
Tgt Ion	Resp	Lower	Upper
107	100		
108	0.0	93.0	139.6#
77	0.0	39.8	59.8#
79	0.0	38.0	57.0#



#19  
 n-Nitroso-di-n-propylamine  
 Concen: 19.47 ng  
 RT: 7.37 min Scan# 462  
 Delta R.T. 0.09 min  
 Lab File: BF093329.D  
 Acq: 2 Mar 2017 19:10

Tgt Ion	Resp	Lower	Upper
70	100		
42	52.6	49.4	74.0
101	0.0	7.4	11.2#
130	1.9	14.2	21.4#

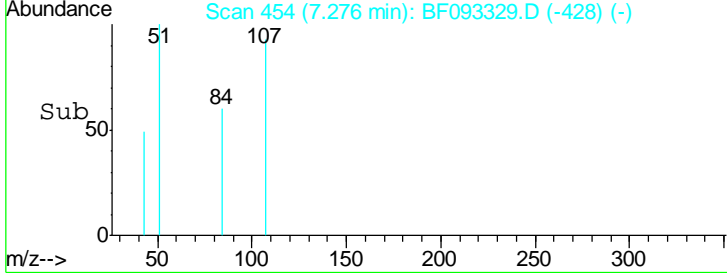
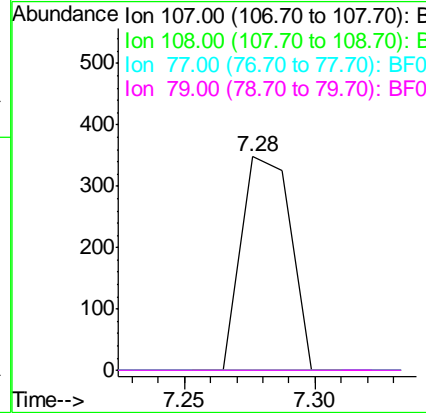
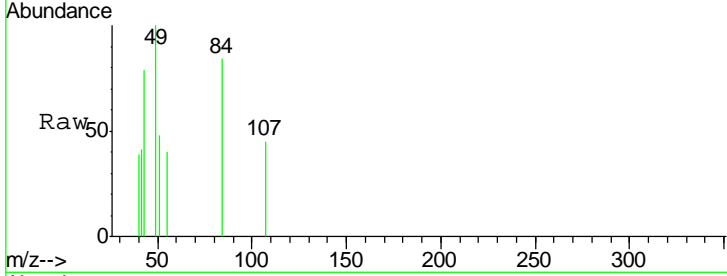




#20  
 3+4-Methylphenols  
 Concen: 0.05 ng  
 RT: 7.28 min Scan# 454  
 Delta R.T. 0.00 min  
 Lab File: BF093329.D  
 Acq: 2 Mar 2017 19:10

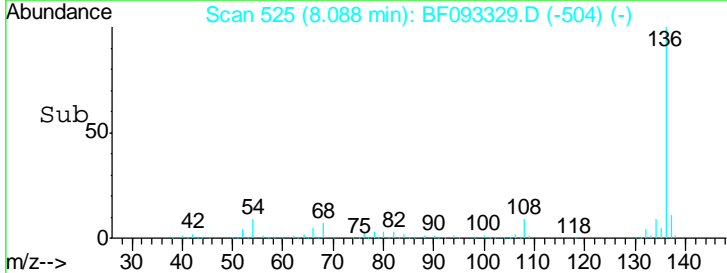
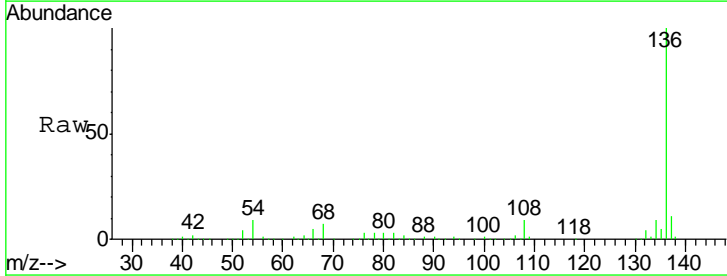
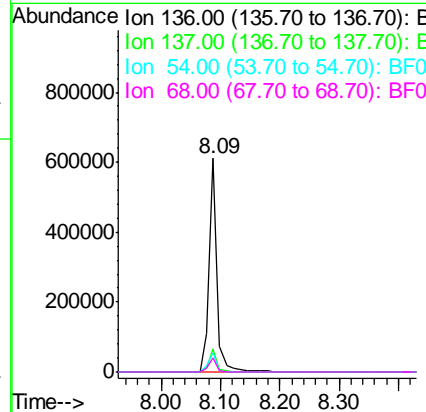
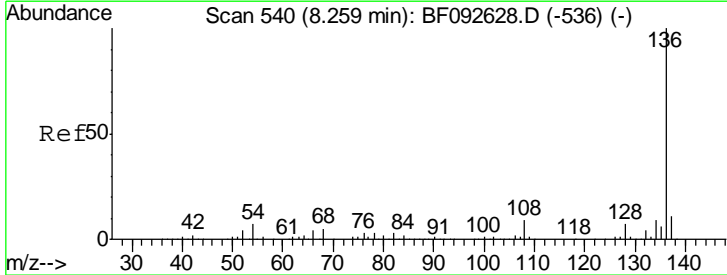
Instrument :  
 BNA\_F  
 ClientSampled :  
 CPS133051

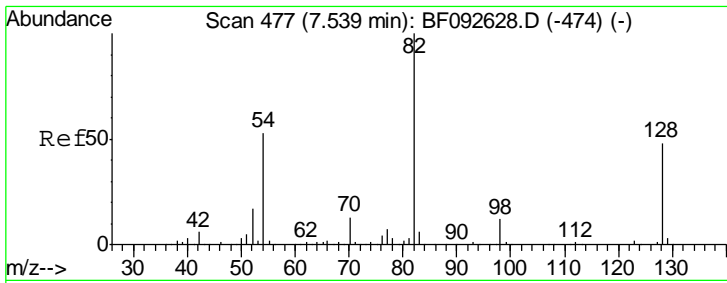
Tgt Ion	Resp	Lower	Upper
107	100		
108	0.0	73.0	113.0#
77	0.0	71.3	111.3#
79	0.0	11.1	51.1#



#21  
 Naphthalene-d8  
 Concen: 20.00 ng  
 RT: 8.09 min Scan# 525  
 Delta R.T. -0.06 min  
 Lab File: BF093329.D  
 Acq: 2 Mar 2017 19:10

Tgt Ion	Resp	Lower	Upper
136	100		
137	10.8	8.4	12.6
54	8.9	4.5	6.7#
68	6.9	3.6	5.4#

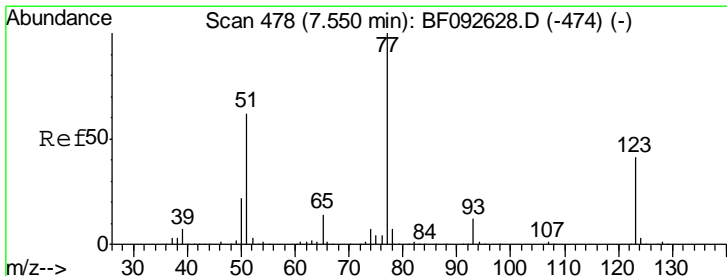
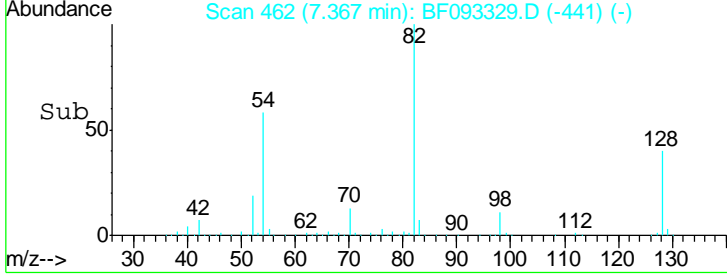
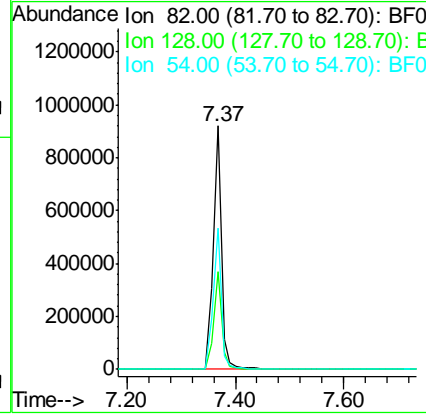
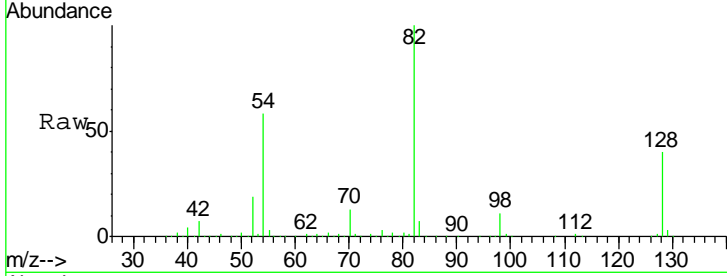




#23  
 Nitrobenzene-d5  
 Concen: 92.77 ng  
 RT: 7.37 min Scan# 462  
 Delta R.T. -0.06 min  
 Lab File: BF093329.D  
 Acq: 2 Mar 2017 19:10

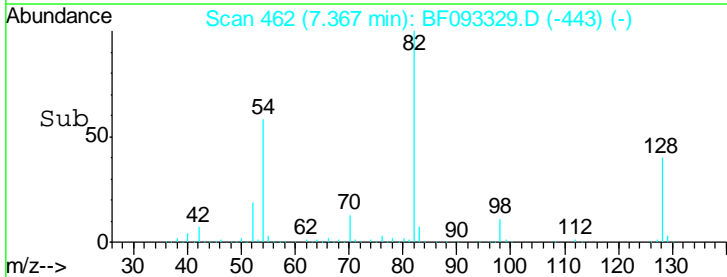
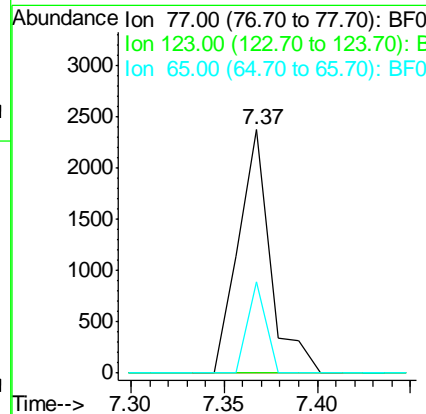
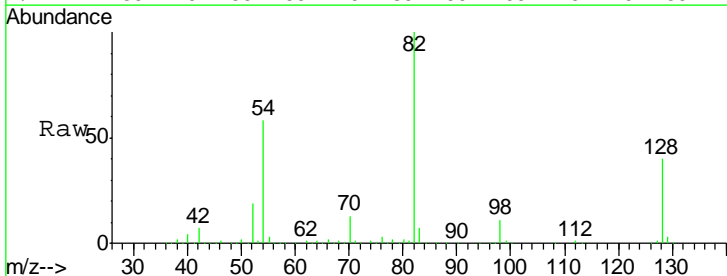
**Instrument :**  
 BNA\_F  
**ClientSampled :**  
 CPS133051

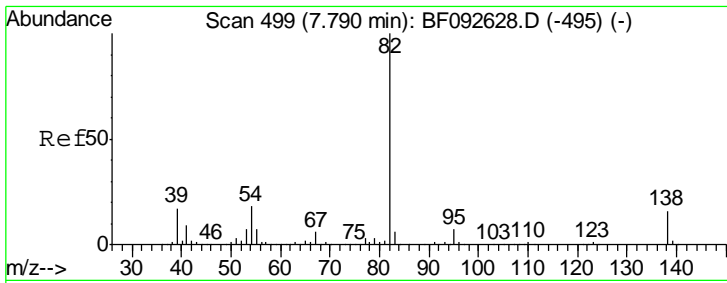
Tgt Ion	Resp	Lower	Upper
82	973868		
128	40.3	34.6	52.0
54	58.2	39.5	59.3



#24  
 Nitrobenzene  
 Concen: 0.27 ng  
 RT: 7.37 min Scan# 462  
 Delta R.T. -0.08 min  
 Lab File: BF093329.D  
 Acq: 2 Mar 2017 19:10

Tgt Ion	Resp	Lower	Upper
77	2861		
123	0.0	33.0	49.4#
65	37.7	11.2	16.8#

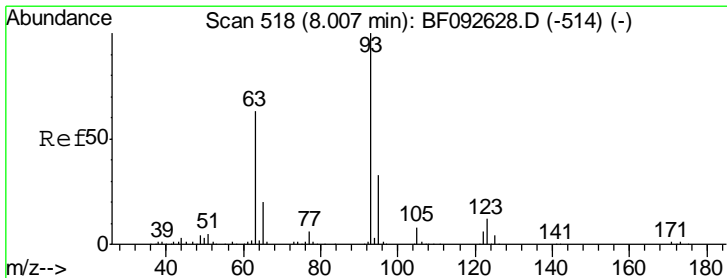
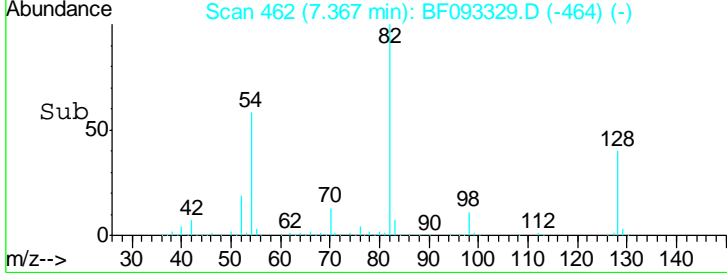
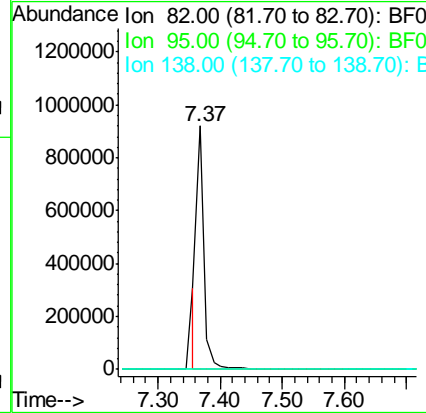
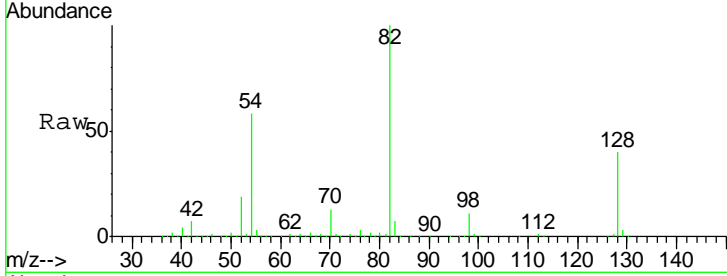




#25  
 Isophorone  
 Concen: 38.69 ng  
 RT: 7.37 min Scan# 462  
 Delta R.T. -0.32 min  
 Lab File: BF093329.D  
 Acq: 2 Mar 2017 19:10

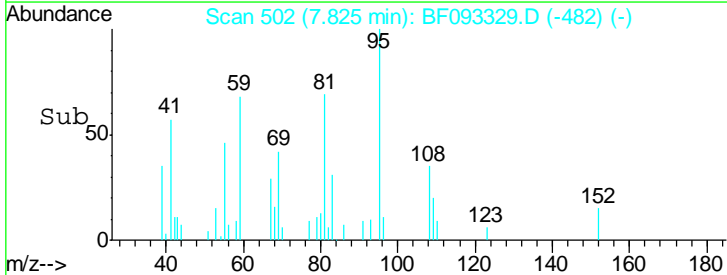
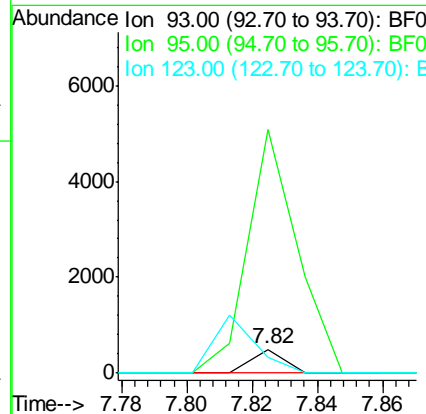
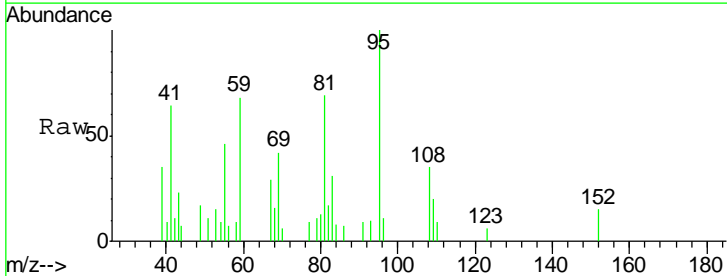
Instrument :  
 BNA\_F  
 ClientSampleID :  
 CPS133051

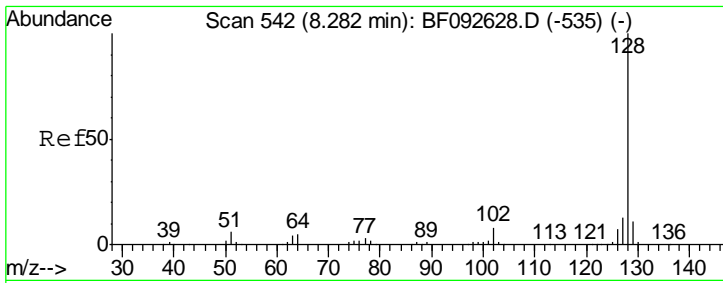
Tgt Ion	Resp	Lower	Upper
82	100		
95	0.0	5.6	8.4#
138	0.0	14.6	22.0#



#28  
 bis(2-Chloroethoxy)methane  
 Concen: 0.03 ng  
 RT: 7.82 min Scan# 502  
 Delta R.T. -0.07 min  
 Lab File: BF093329.D  
 Acq: 2 Mar 2017 19:10

Tgt Ion	Resp	Lower	Upper
93	100		
95	1014.0	26.5	39.7#
123	65.5	8.6	13.0#

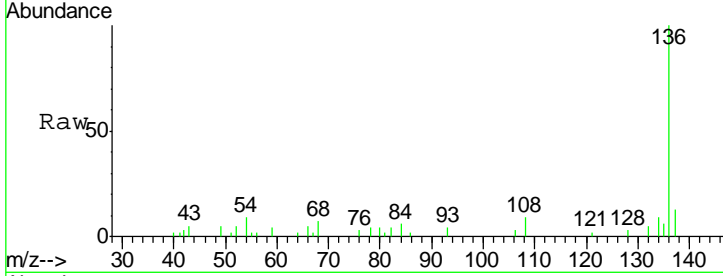




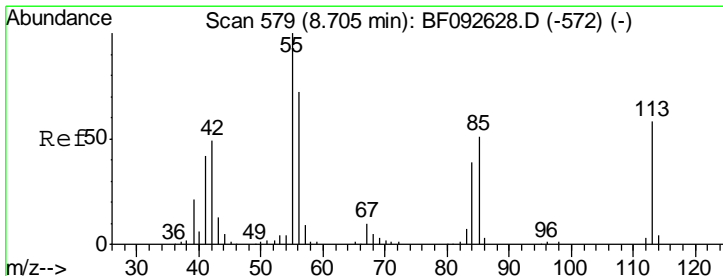
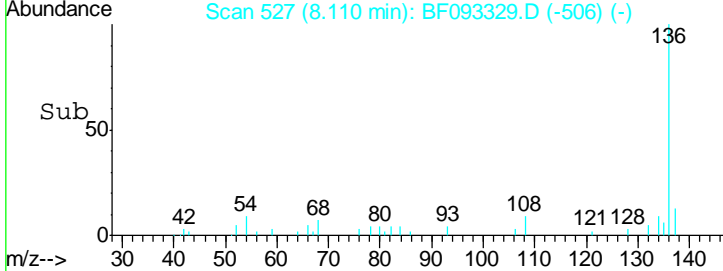
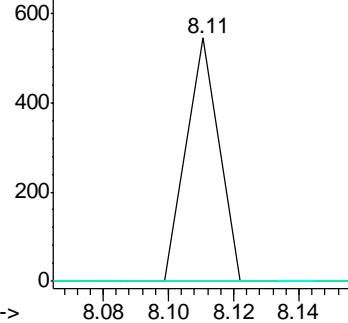
#31  
 Naphthalene  
 Concen: 0.01 ng  
 RT: 8.11 min Scan# 527  
 Delta R.T. -0.06 min  
 Lab File: BF093329.D  
 Acq: 2 Mar 2017 19:10

Instrument :  
 BNA\_F  
 ClientSampled :  
 CPS133051

Tgt Ion	Resp	Lower	Upper
128	100		
129	0.0	9.5	14.3#
127	0.0	10.8	16.2#

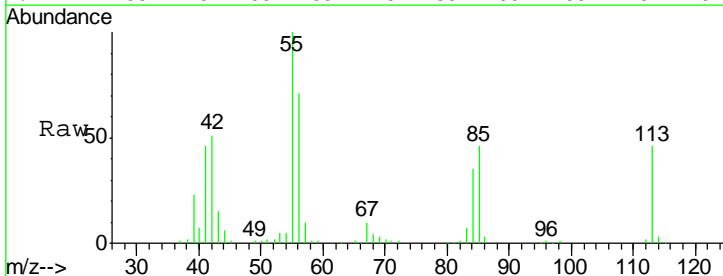


Abundance Ion 128.00 (127.70 to 128.70): E  
 Ion 129.00 (128.70 to 129.70): E  
 Ion 127.00 (126.70 to 127.70): E

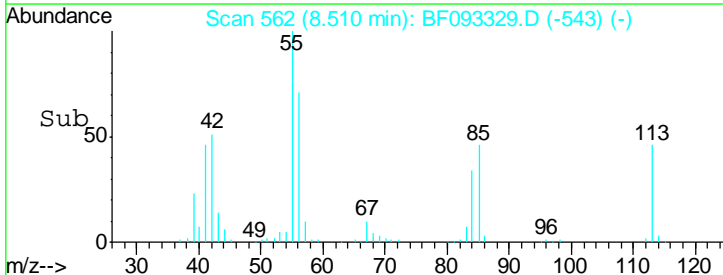
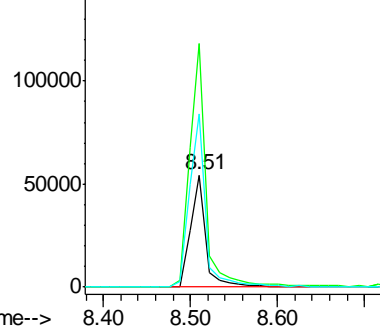


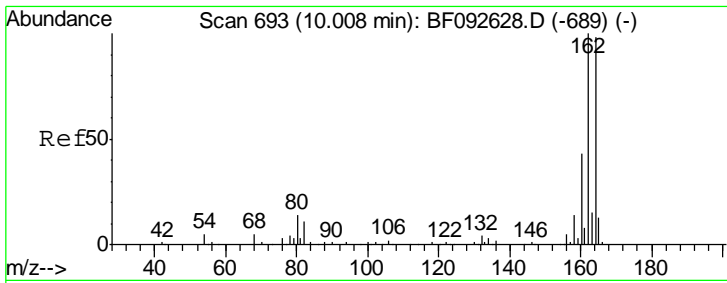
#35  
 Caprolactam  
 Concen: 25.83 ng  
 RT: 8.51 min Scan# 562  
 Delta R.T. -0.08 min  
 Lab File: BF093329.D  
 Acq: 2 Mar 2017 19:10

Tgt Ion	Resp	Lower	Upper
113	100		
55	216.7	119.2	159.2#
56	154.6	83.8	123.8#



Abundance Ion 113.00 (112.70 to 113.70): E  
 Ion 55.00 (54.70 to 55.70): BF0  
 Ion 56.00 (55.70 to 56.70): BF0

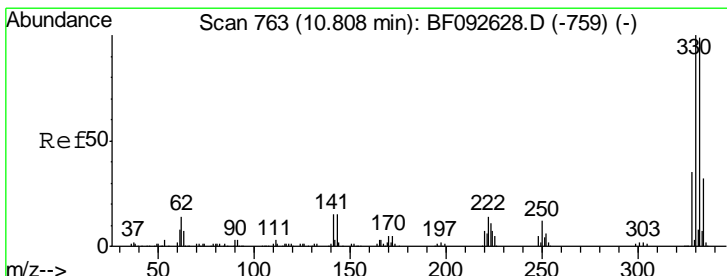
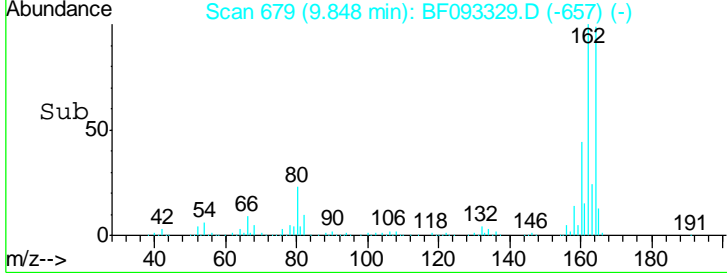
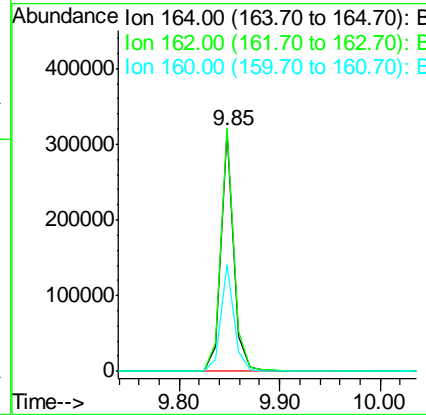
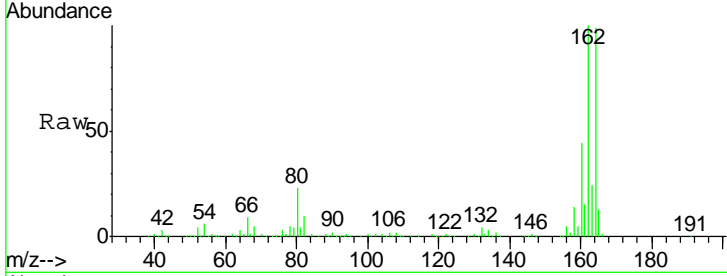




#38  
 Acenaphthene-d10  
 Concen: 20.00 ng  
 RT: 9.85 min Scan# 679  
 Delta R.T. -0.05 min  
 Lab File: BF093329.D  
 Acq: 2 Mar 2017 19:10

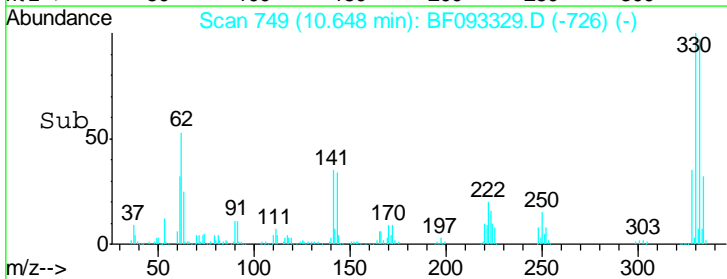
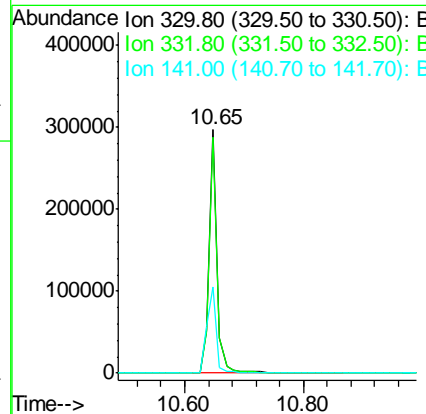
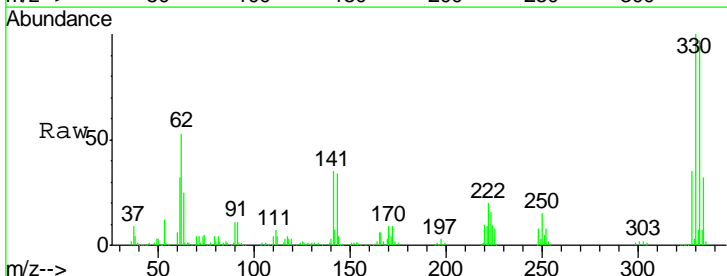
Instrument :  
 BNA\_F  
 ClientSampled :  
 CPS133051

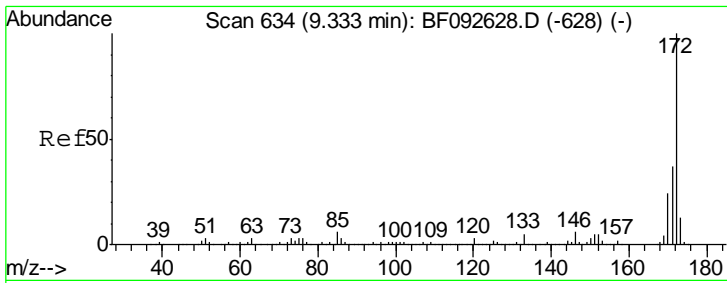
Tgt Ion	Resp	Lower	Upper
164	100		
162	101.4	80.2	120.2
160	44.6	36.9	55.3



#41  
 2,4,6-Tribromophenol  
 Concen: 141.65 ng  
 RT: 10.65 min Scan# 749  
 Delta R.T. -0.03 min  
 Lab File: BF093329.D  
 Acq: 2 Mar 2017 19:10

Tgt Ion	Resp	Lower	Upper
330	100		
332	97.3	77.4	116.2
141	42.7	34.1	51.1



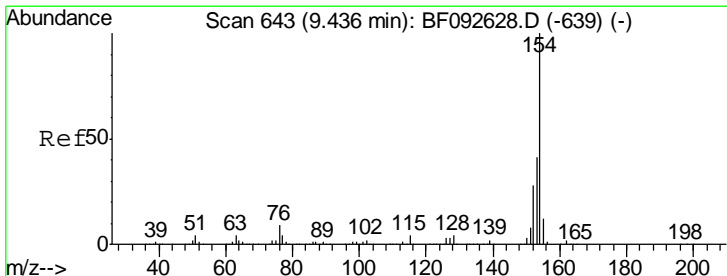
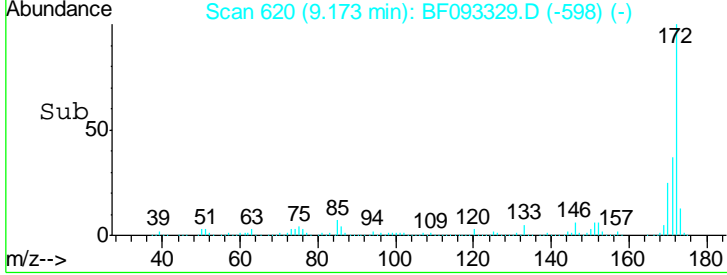
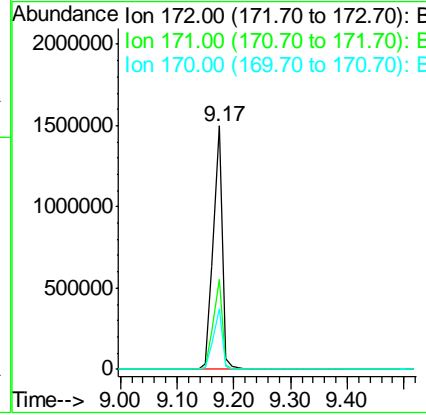
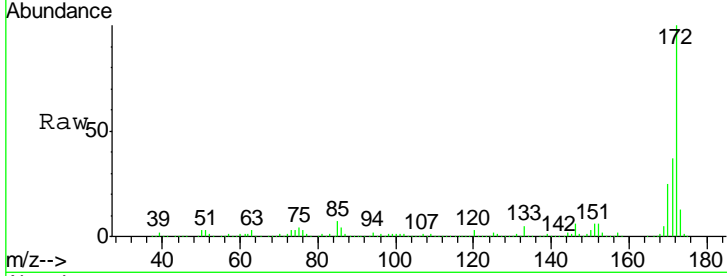


#44  
 2-Fluorobiphenyl  
 Concen: 101.81 ng  
 RT: 9.17 min Scan# 620  
 Delta R.T. -0.05 min  
 Lab File: BF093329.D  
 Acq: 2 Mar 2017 19:10

**Instrument :**  
 BNA\_F  
**ClientSampled :**  
 CPS133051

Tgt Ion:172 Resp: 1570927

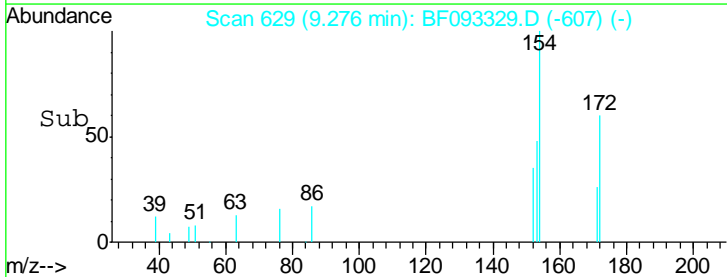
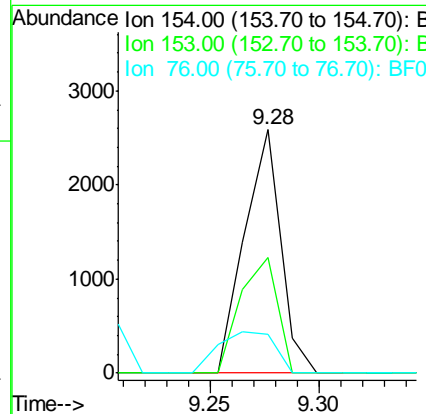
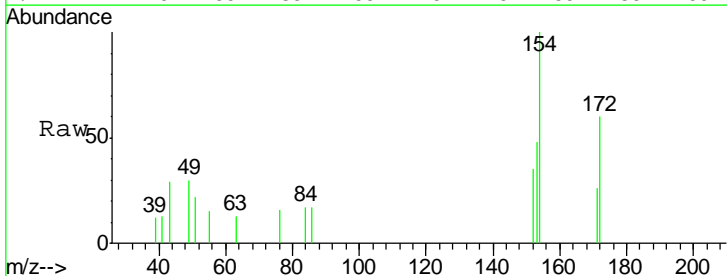
Ion	Ratio	Lower	Upper
172	100		
171	36.8	29.4	44.0
170	24.7	20.2	30.4



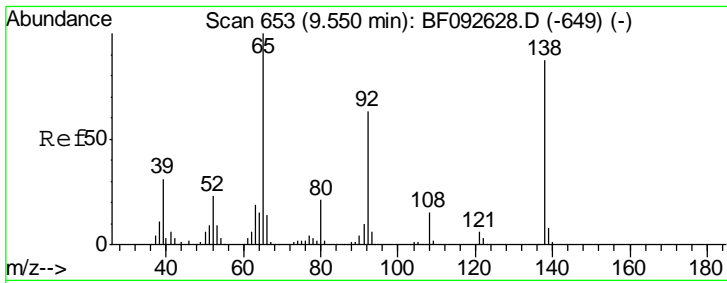
#45  
 1,1'-Biphenyl  
 Concen: 0.15 ng  
 RT: 9.28 min Scan# 629  
 Delta R.T. -0.05 min  
 Lab File: BF093329.D  
 Acq: 2 Mar 2017 19:10

Tgt Ion:154 Resp: 2987

Ion	Ratio	Lower	Upper
154	100		
153	47.5	20.9	60.9
76	16.2	0.0	30.5



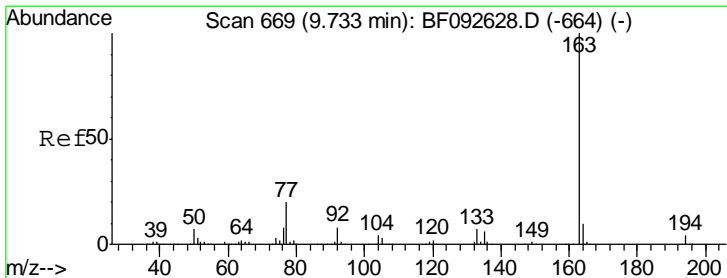
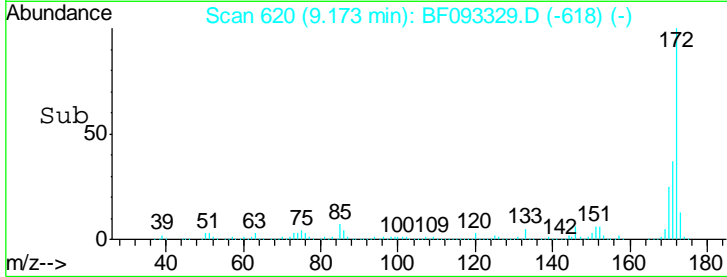
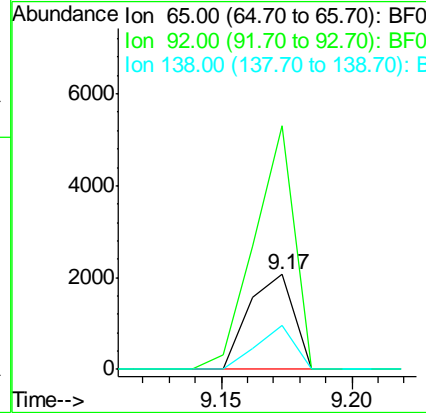
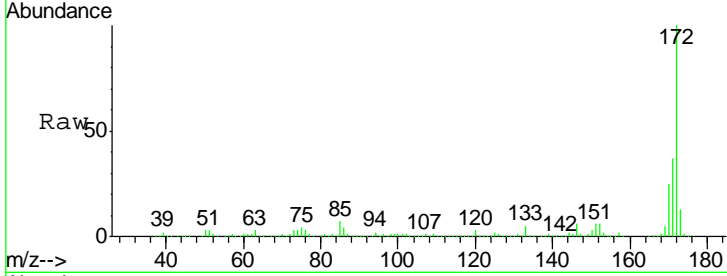




#47  
 2-Nitroaniline  
 Concen: 0.47 ng  
 RT: 9.17 min Scan# 620  
 Delta R.T. -0.27 min  
 Lab File: BF093329.D  
 Acq: 2 Mar 2017 19:10

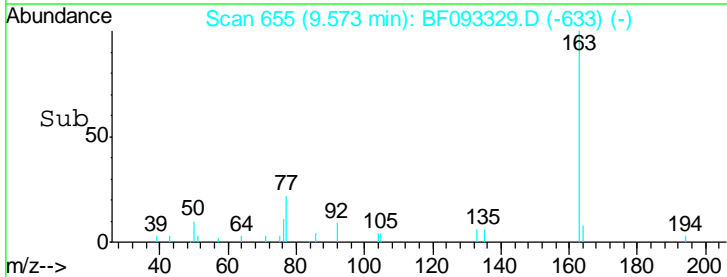
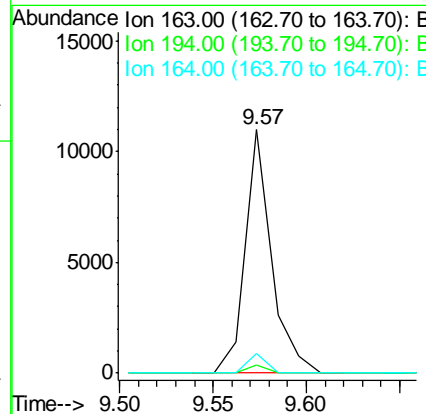
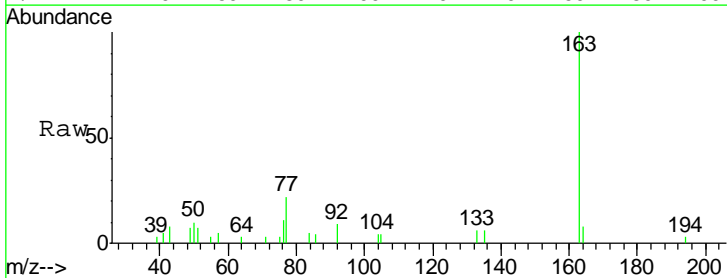
Instrument :  
 BNA\_F  
 ClientSampled :  
 CPS133051

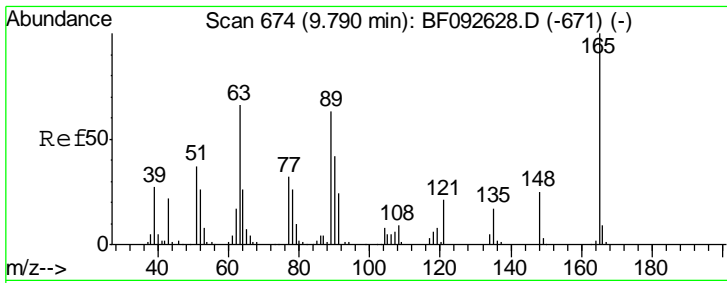
Tgt Ion	Resp	Lower	Upper
65	100		
92	257.6	53.9	80.9#
138	46.5	76.8	115.2#



#49  
 Dimethylphthalate  
 Concen: 0.57 ng  
 RT: 9.57 min Scan# 655  
 Delta R.T. -0.05 min  
 Lab File: BF093329.D  
 Acq: 2 Mar 2017 19:10

Tgt Ion	Resp	Lower	Upper
163	100		
194	3.4	3.0	4.4
164	8.0	8.0	12.0#

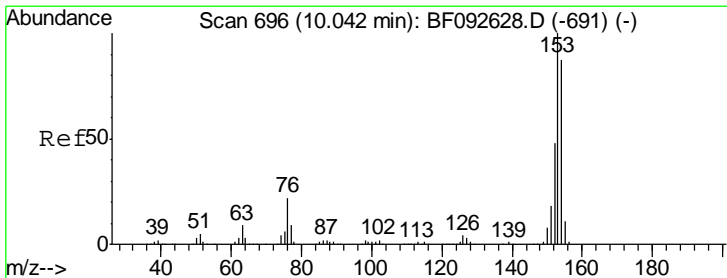
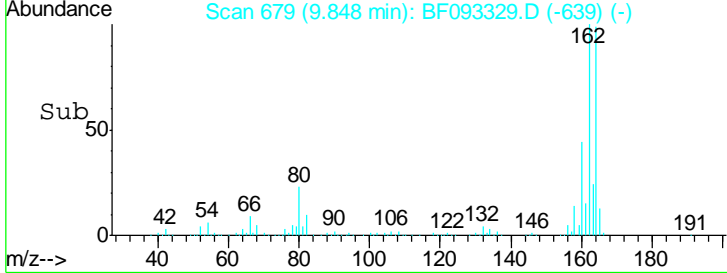
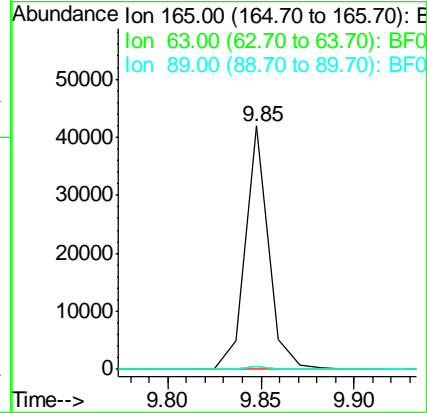
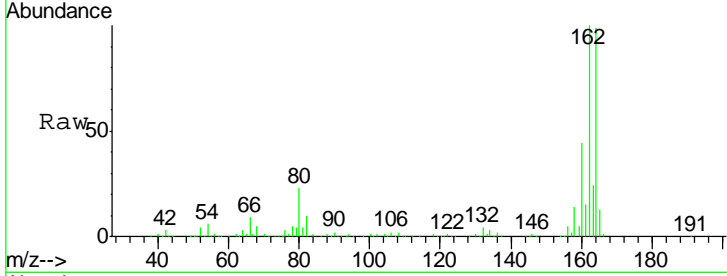




#50  
 2,6-Dinitrotoluene  
 Concen: 8.96 ng  
 RT: 9.85 min Scan# 679  
 Delta R.T. 0.16 min  
 Lab File: BF093329.D  
 Acq: 2 Mar 2017 19:10

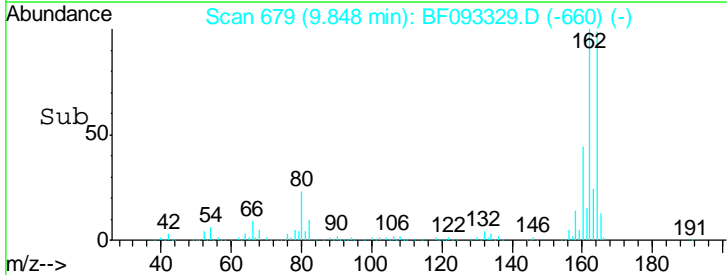
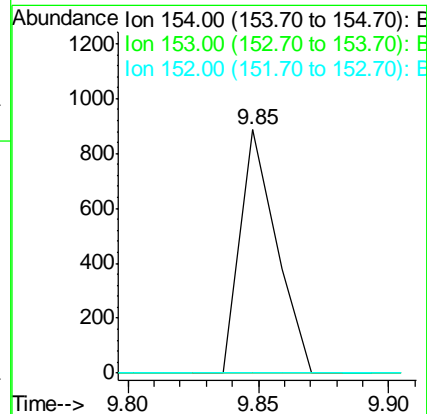
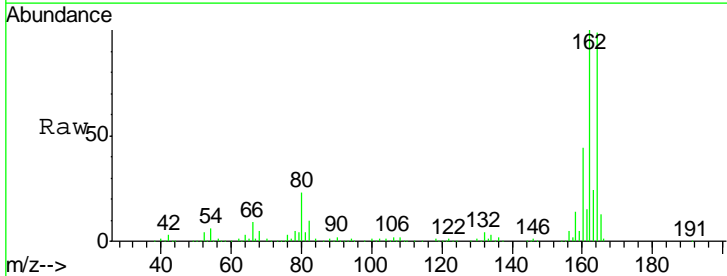
Instrument :  
 BNA\_F  
 ClientSampleID :  
 CPS133051

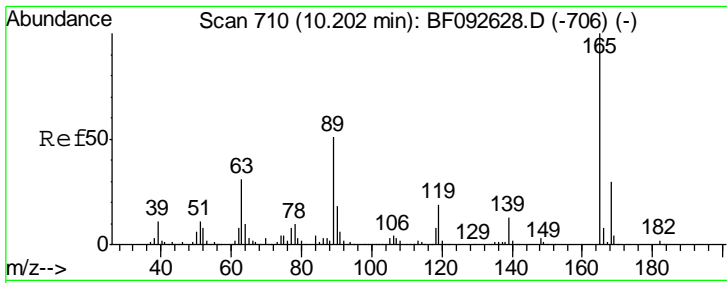
Tgt Ion	Resp	Lower	Upper
165	100		
63	1.4	36.2	54.4#
89	1.4	40.2	60.4#



#51  
 Acenaphthene  
 Concen: 0.05 ng  
 RT: 9.85 min Scan# 679  
 Delta R.T. -0.08 min  
 Lab File: BF093329.D  
 Acq: 2 Mar 2017 19:10

Tgt Ion	Resp	Lower	Upper
154	100		
153	0.0	88.6	133.0#
152	0.0	41.6	62.4#

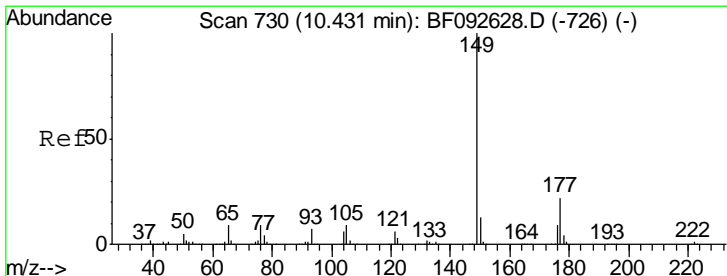
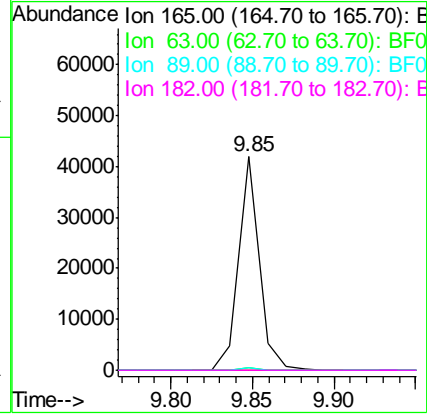
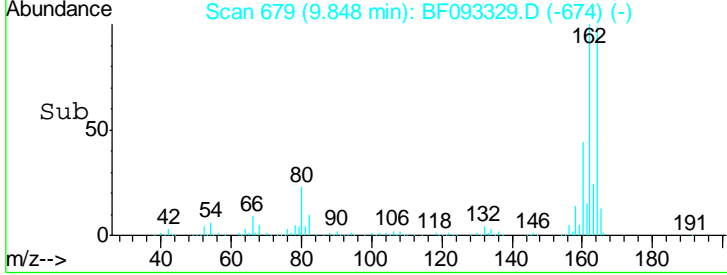
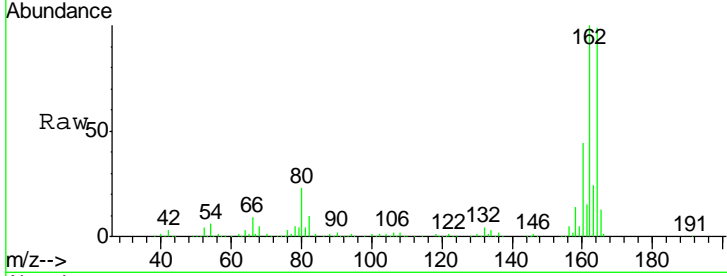




#56  
 2,4-Dinitrotoluene  
 Concen: 6.73 ng  
 RT: 9.85 min Scan# 679  
 Delta R.T. -0.24 min  
 Lab File: BF093329.D  
 Acq: 2 Mar 2017 19:10

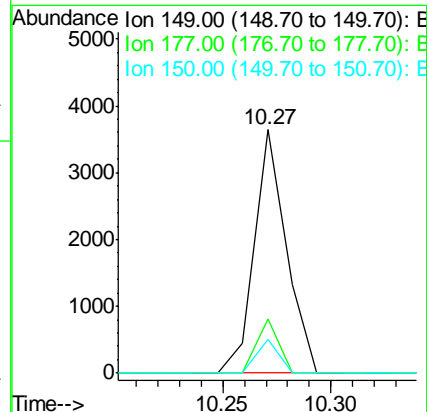
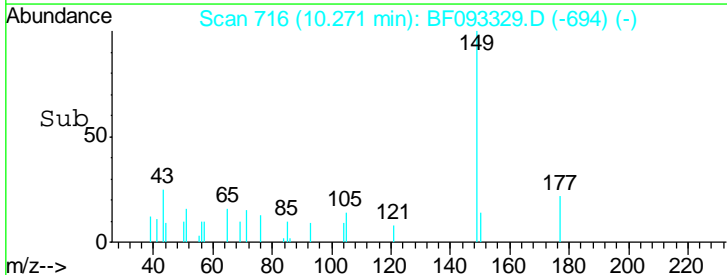
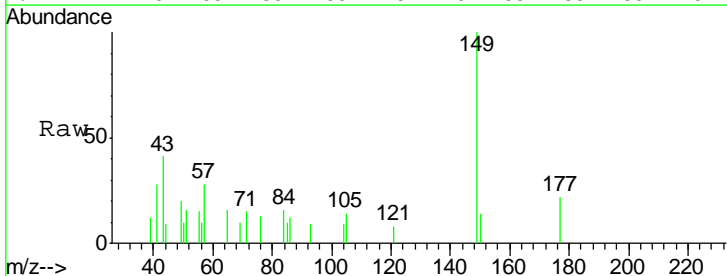
Instrument :  
 BNA\_F  
 ClientSampled :  
 CPS133051

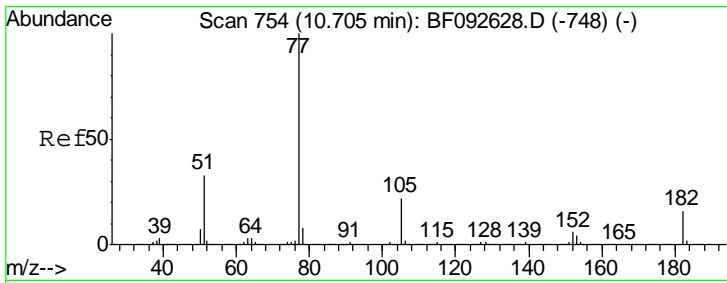
Tgt Ion	Resp	Lower	Upper
165	100		
63	1.4	40.2	60.4#
89	1.4	62.5	93.7#
182	0.0	1.8	2.8#



#59  
 Diethylphthalate  
 Concen: 0.21 ng  
 RT: 10.27 min Scan# 716  
 Delta R.T. -0.05 min  
 Lab File: BF093329.D  
 Acq: 2 Mar 2017 19:10

Tgt Ion	Resp	Lower	Upper
149	100		
177	22.4	16.6	25.0
150	13.8	10.4	15.6

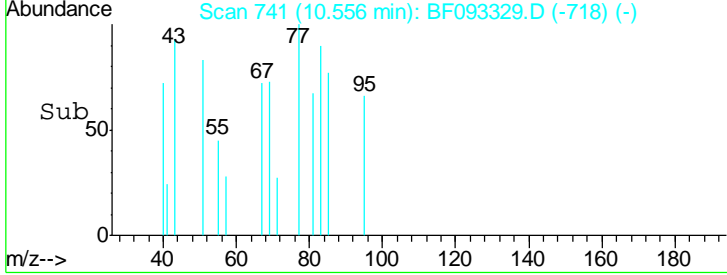
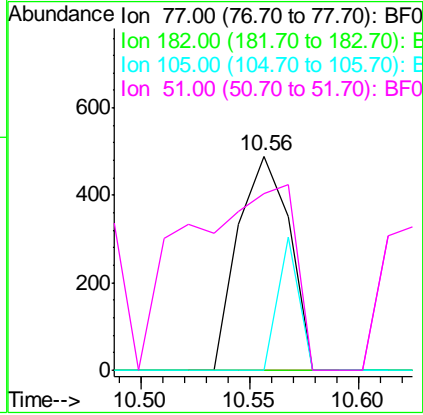
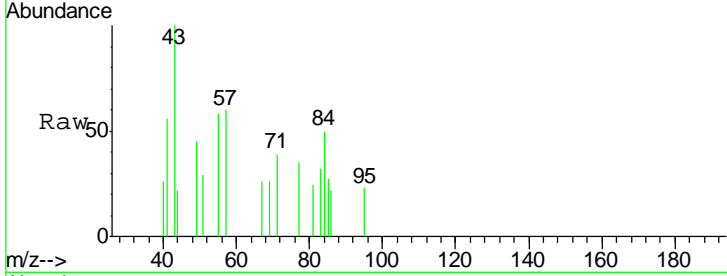




#62  
 Azobenzene  
 Concen: 0.04 ng  
 RT: 10.56 min Scan# 741  
 Delta R.T. -0.03 min  
 Lab File: BF093329.D  
 Acq: 2 Mar 2017 19:10

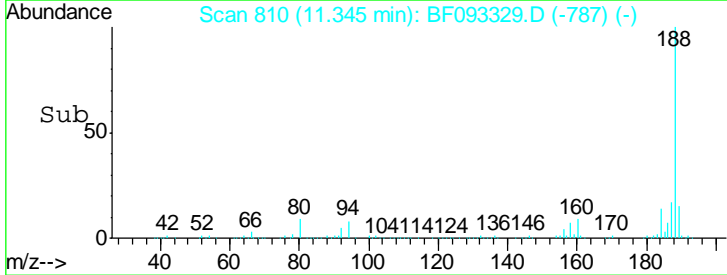
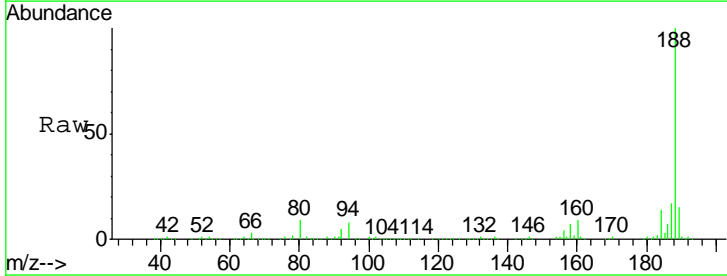
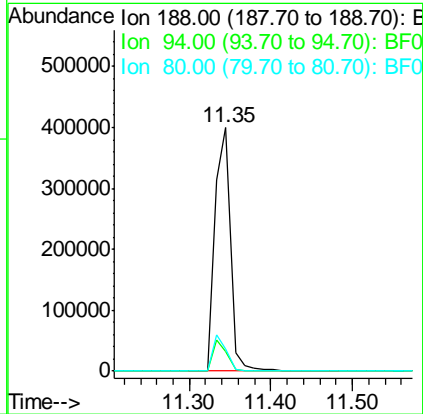
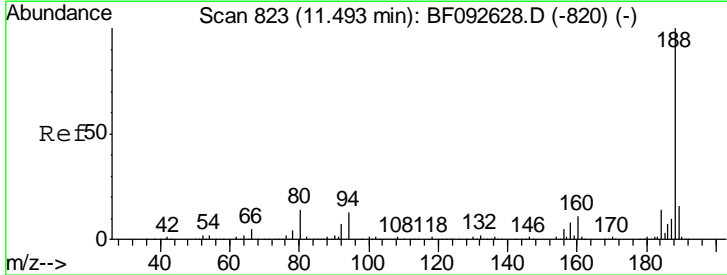
**Instrument :**  
 BNA\_F  
**ClientSampled :**  
 CPS133051

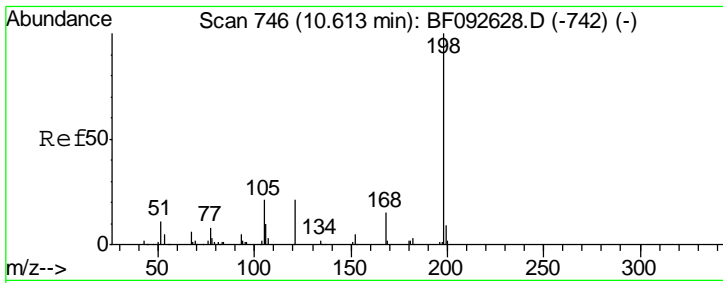
Tgt Ion	Resp	Lower	Upper
77	100		
182	0.0	0.0	39.3
105	0.0	2.3	42.3#
51	82.6	8.9	48.9#



#63  
 Phenanthrene-d10  
 Concen: 20.00 ng  
 RT: 11.35 min Scan# 810  
 Delta R.T. -0.03 min  
 Lab File: BF093329.D  
 Acq: 2 Mar 2017 19:10

Tgt Ion	Resp	Lower	Upper
188	100		
94	8.3	10.0	15.0#
80	8.9	11.2	16.8#

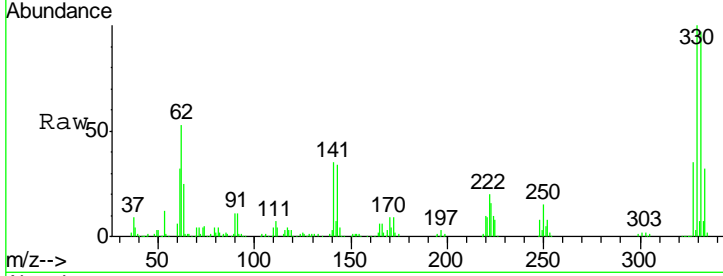




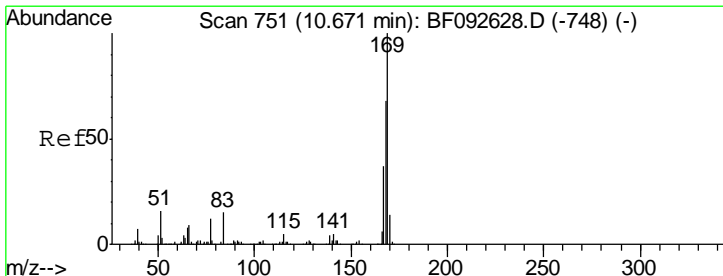
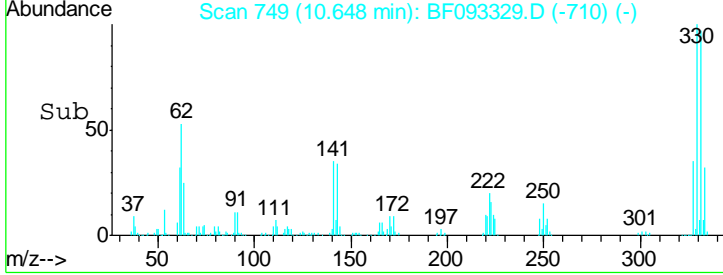
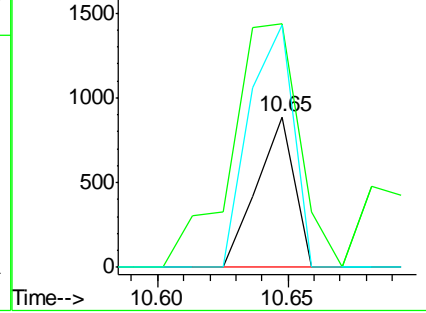
#64  
 4,6-Dinitro-2-methylphenol  
 Concen: 2.93 ng  
 RT: 10.65 min Scan# 749  
 Delta R.T. 0.15 min  
 Lab File: BF093329.D  
 Acq: 2 Mar 2017 19:10

**Instrument :**  
 BNA\_F  
**ClientSampled :**  
 CPS133051

Tgt Ion	Resp	Lower	Upper
198	100		
51	161.5	6.7	46.7#
105	160.7	16.6	56.6#

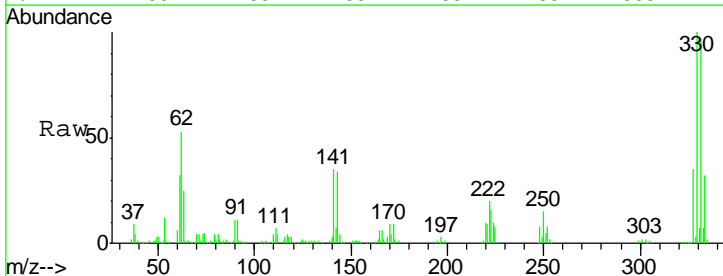


Abundance Ion 198.00 (197.70 to 198.70): E  
 Ion 51.00 (50.70 to 51.70): BF0  
 Ion 105.00 (104.70 to 105.70): E

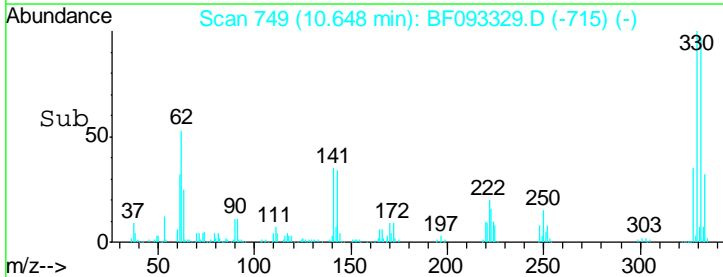
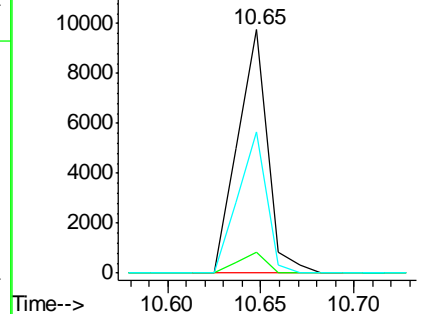


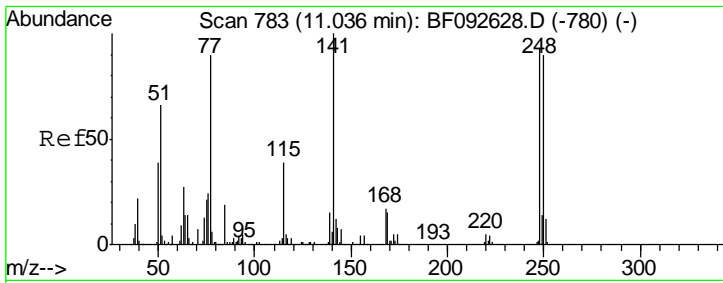
#65  
 n-Nitrosodiphenylamine  
 Concen: 0.65 ng  
 RT: 10.65 min Scan# 749  
 Delta R.T. 0.09 min  
 Lab File: BF093329.D  
 Acq: 2 Mar 2017 19:10

Tgt Ion	Resp	Lower	Upper
169	100		
168	8.8	54.2	81.2#
167	58.0	30.2	45.4#



Abundance Ion 169.00 (168.70 to 169.70): E  
 Ion 168.00 (167.70 to 168.70): E  
 Ion 167.00 (166.70 to 167.70): E

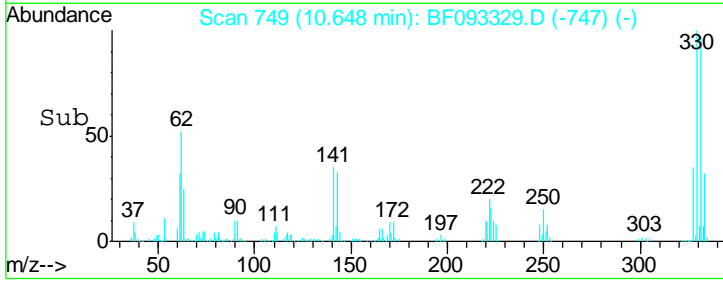
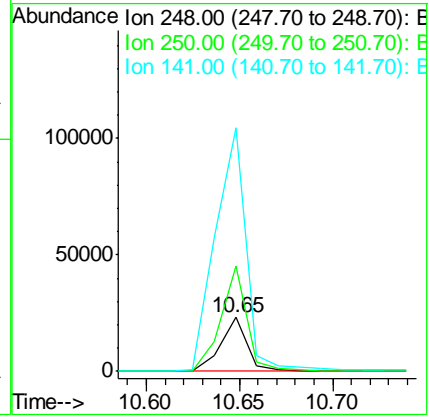
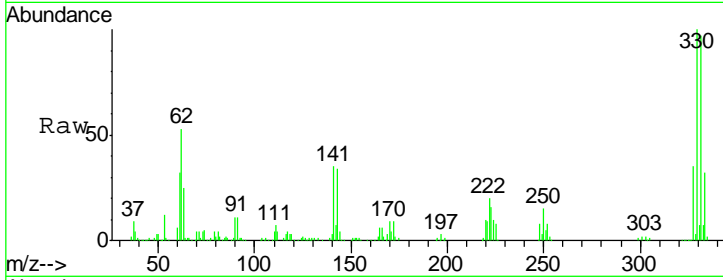




#66  
 4-Bromophenyl-phenylether  
 Concen: 4.10 ng  
 RT: 10.65 min Scan# 749  
 Delta R.T. -0.27 min  
 Lab File: BF093329.D  
 Acq: 2 Mar 2017 19:10

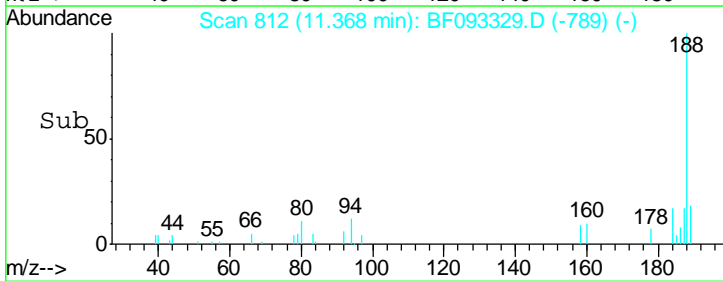
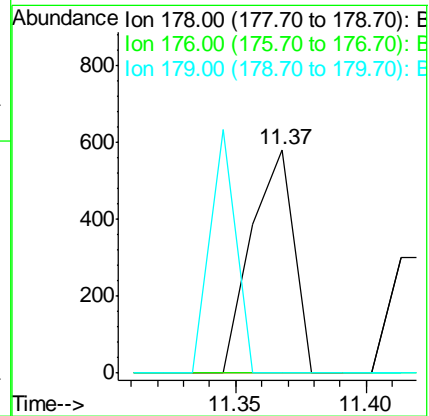
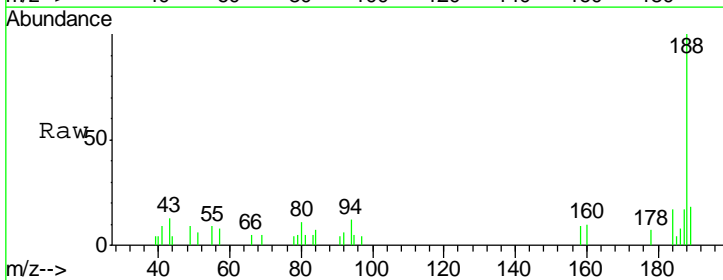
**Instrument :**  
 BNA\_F  
**ClientSampled :**  
 CPS133051

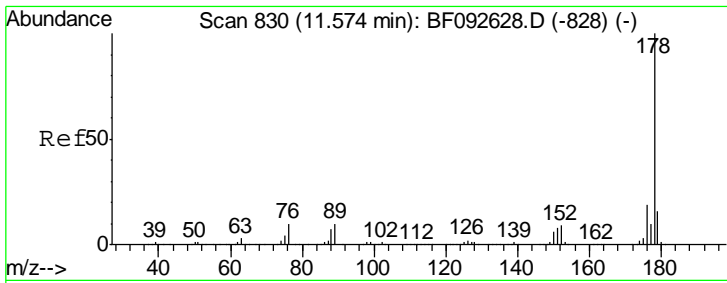
Tgt Ion	Resp	Lower	Upper
248	100		
250	195.7	76.9	115.3#
141	454.7	68.2	102.4#



#70  
 Phenanthrene  
 Concen: 0.02 ng  
 RT: 11.37 min Scan# 812  
 Delta R.T. -0.03 min  
 Lab File: BF093329.D  
 Acq: 2 Mar 2017 19:10

Tgt Ion	Resp	Lower	Upper
178	100		
176	0.0	16.6	25.0#
179	0.0	12.8	19.2#

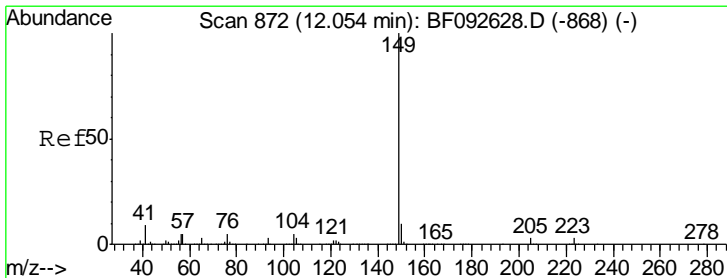
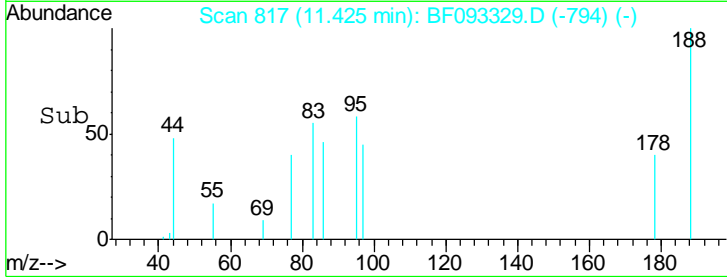
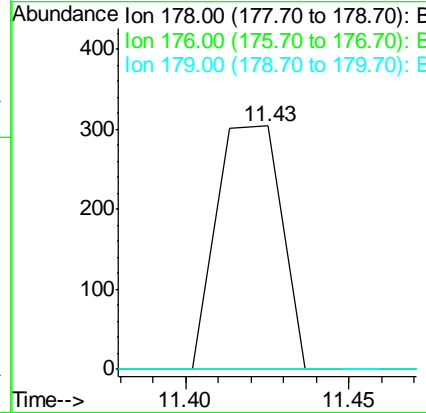
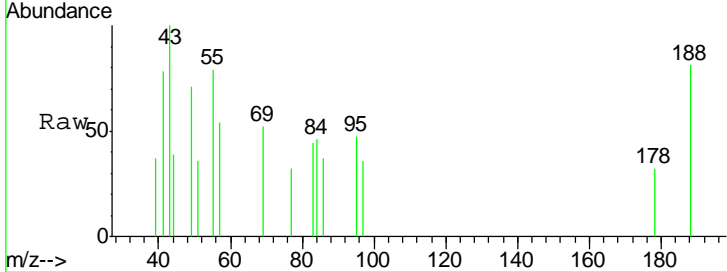




#71  
 Anthracene  
 Concen: 0.01 ng  
 RT: 11.43 min Scan# 817  
 Delta R.T. -0.03 min  
 Lab File: BF093329.D  
 Acq: 2 Mar 2017 19:10

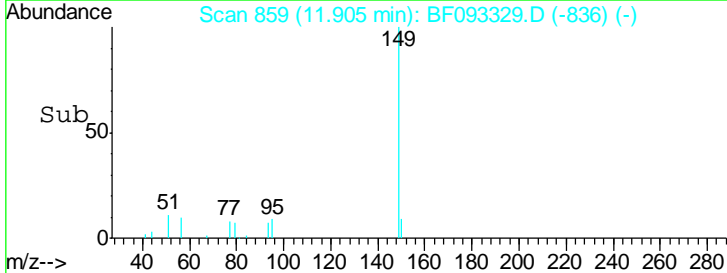
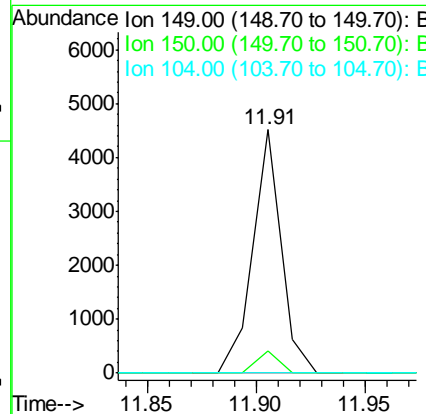
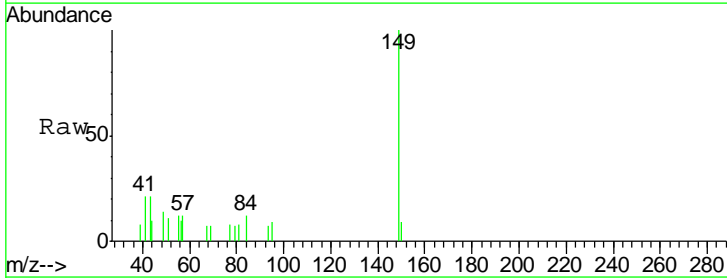
Instrument :  
 BNA\_F  
 ClientSampled :  
 CPS133051

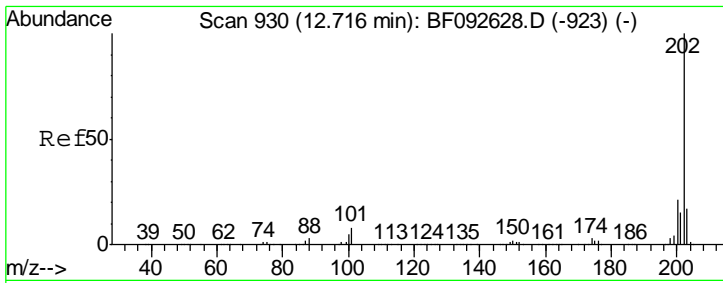
Tgt Ion	Resp	Lower	Upper
178	100		
176	0.0	15.9	23.9#
179	0.0	13.2	19.8#



#73  
 Di-n-butylphthalate  
 Concen: 0.13 ng  
 RT: 11.91 min Scan# 859  
 Delta R.T. -0.03 min  
 Lab File: BF093329.D  
 Acq: 2 Mar 2017 19:10

Tgt Ion	Resp	Lower	Upper
149	100		
150	9.1	8.1	12.1
104	0.0	4.6	7.0#

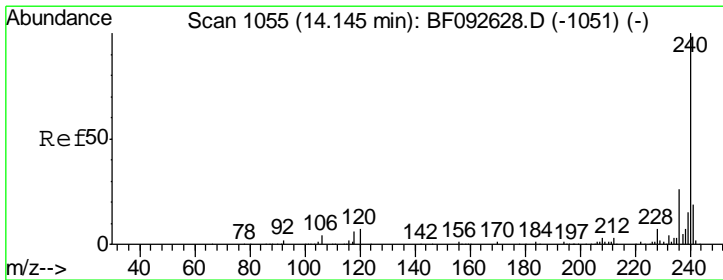
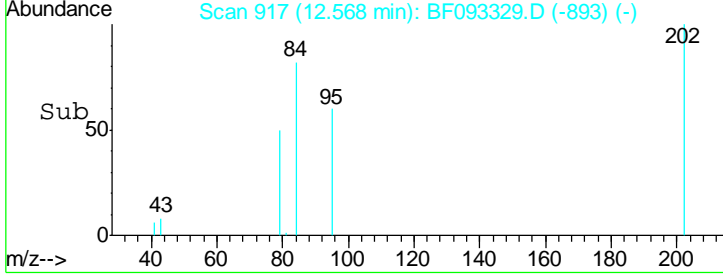
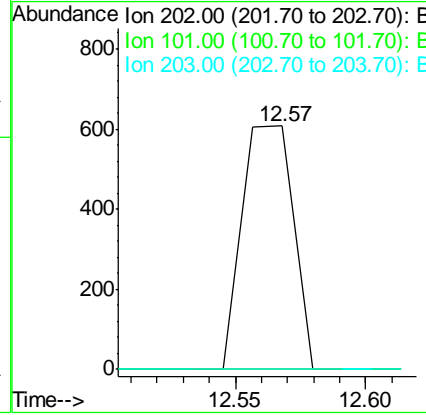
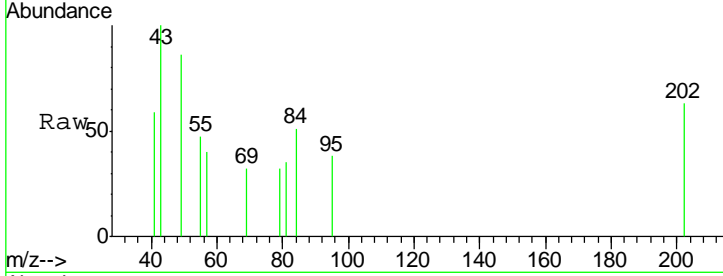




#74  
 Fluoranthene  
 Concen: 0.03 ng  
 RT: 12.57 min Scan# 917  
 Delta R.T. -0.02 min  
 Lab File: BF093329.D  
 Acq: 2 Mar 2017 19:10

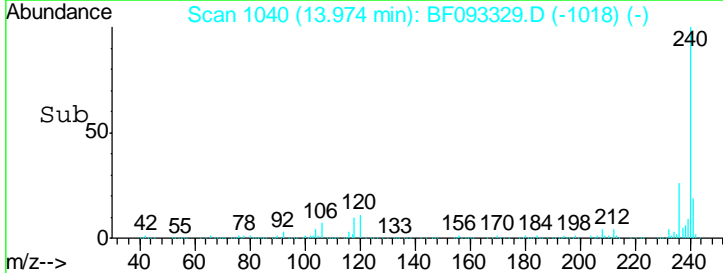
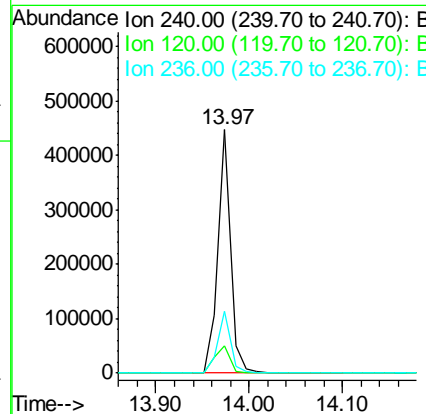
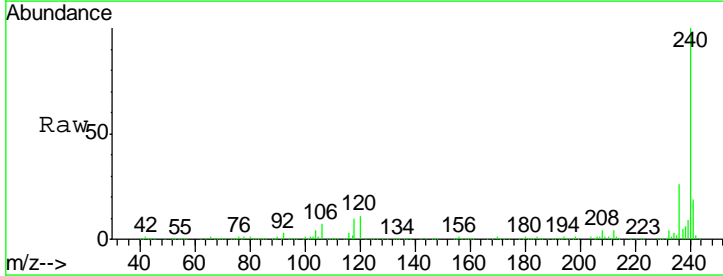
Instrument :  
 BNA\_F  
 ClientSampled :  
 CPS133051

Tgt Ion	Resp	Lower	Upper
202	100		
101	0.0	0.0	34.6
203	0.0	0.0	38.7

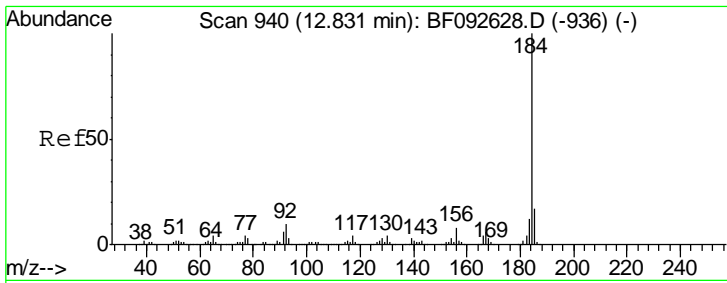


#75  
 Chrysene-d12  
 Concen: 20.00 ng  
 RT: 13.97 min Scan# 1040  
 Delta R.T. -0.05 min  
 Lab File: BF093329.D  
 Acq: 2 Mar 2017 19:10

Tgt Ion	Resp	Lower	Upper
240	100		
120	11.3	12.9	19.3#
236	25.5	20.9	31.3



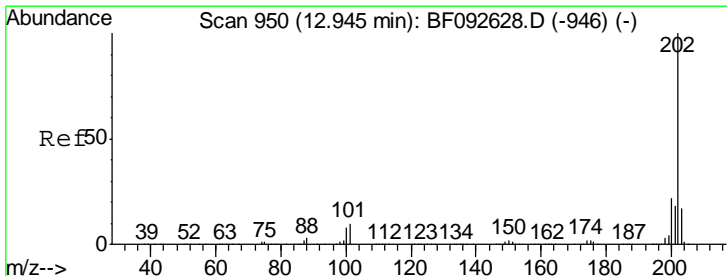
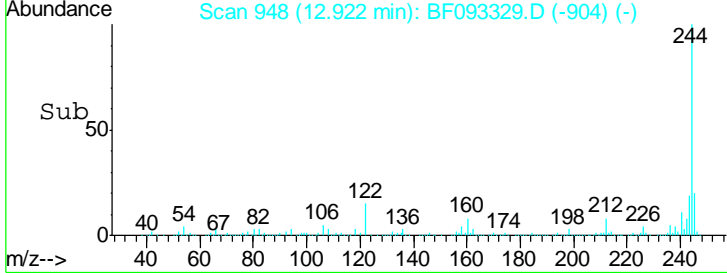
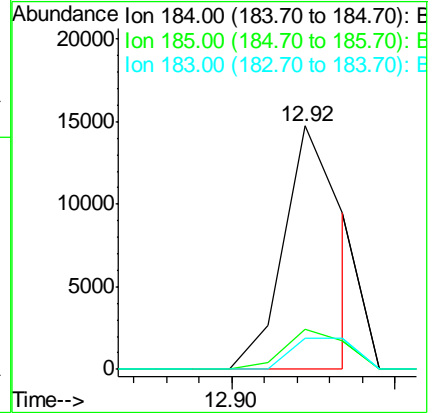
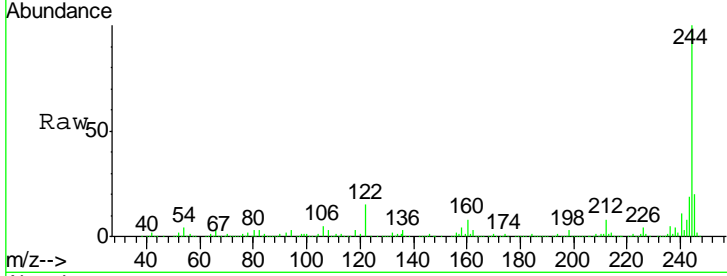




#76  
Benzidine  
Concen: 1.02 ng  
RT: 12.92 min Scan# 948  
Delta R.T. 0.21 min  
Lab File: BF093329.D  
Acq: 2 Mar 2017 19:10

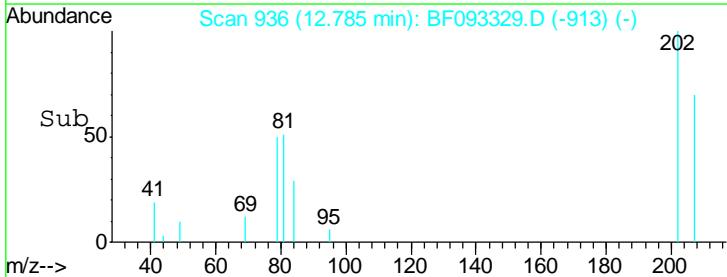
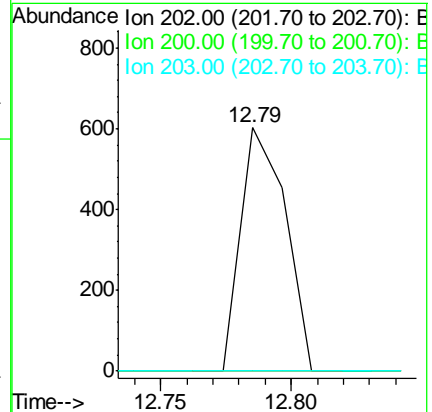
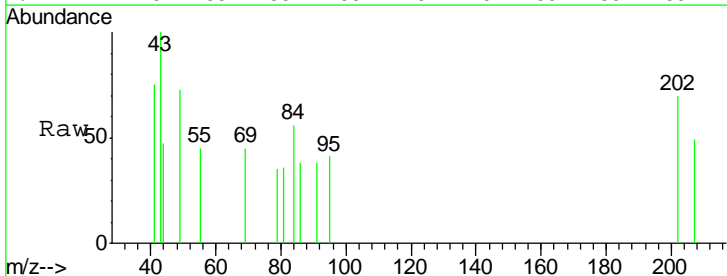
Instrument :  
BNA\_F  
ClientSampled :  
CPS133051

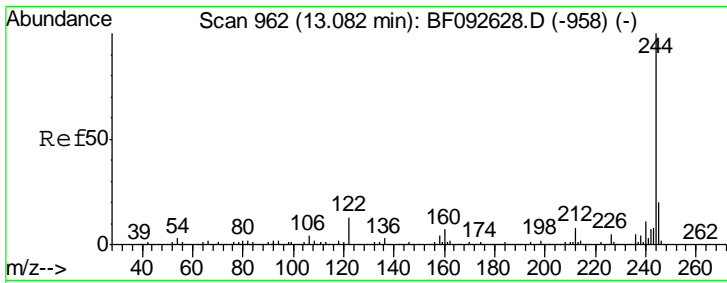
Tgt Ion	Resp	Lower	Upper
184	18451		
185	16.6	13.4	20.0
183	12.6	9.2	13.8



#77  
Pyrene  
Concen: 0.02 ng  
RT: 12.79 min Scan# 936  
Delta R.T. -0.03 min  
Lab File: BF093329.D  
Acq: 2 Mar 2017 19:10

Tgt Ion	Resp	Lower	Upper
202	724		
200	0.0	17.7	26.5#
203	0.0	14.7	22.1#



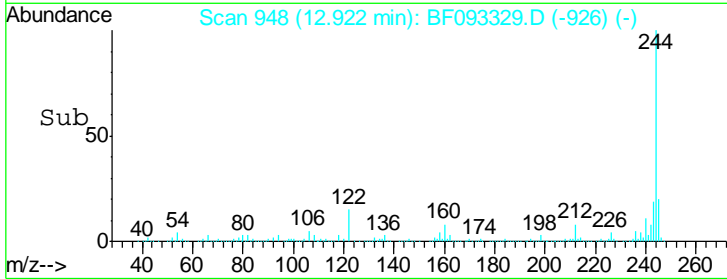
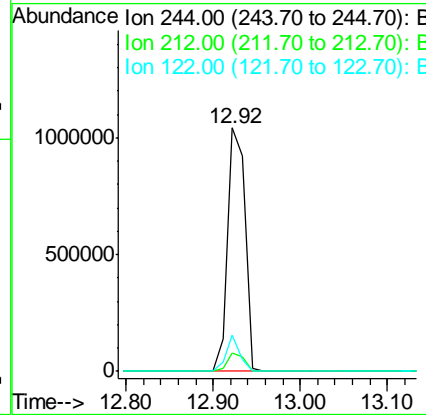
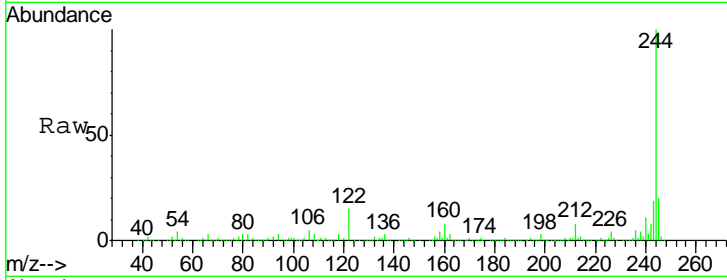


#78  
 Terphenyl-d14  
 Concen: 80.57 ng  
 RT: 12.92 min Scan# 948  
 Delta R.T. -0.05 min  
 Lab File: BF093329.D  
 Acq: 2 Mar 2017 19:10

**Instrument :**  
 BNA\_F  
**ClientSampled :**  
 CPS133051

Tgt Ion: 244 Resp: 1461434

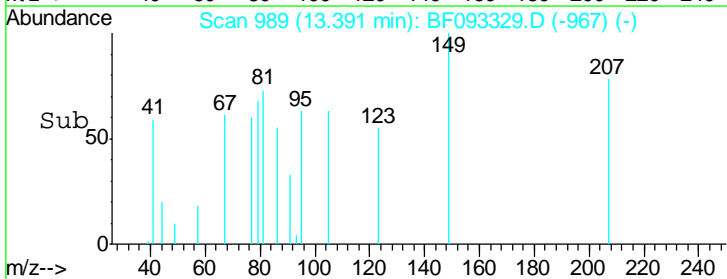
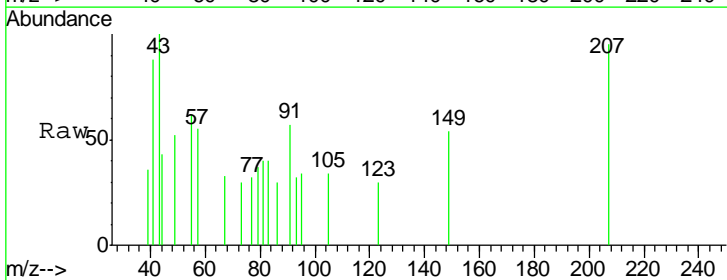
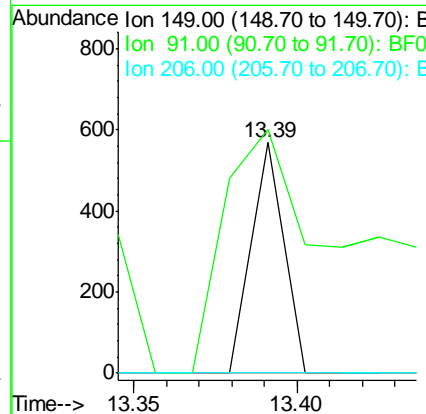
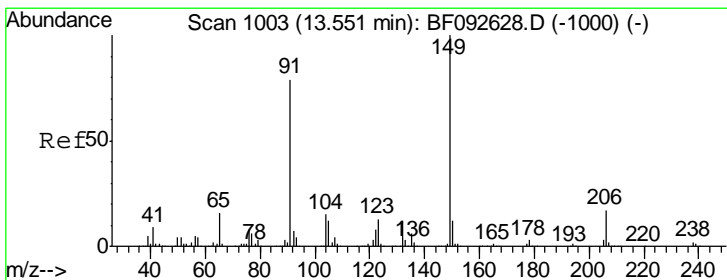
Ion	Ratio	Lower	Upper
244	100		
212	7.6	6.2	9.2
122	15.0	11.4	17.2

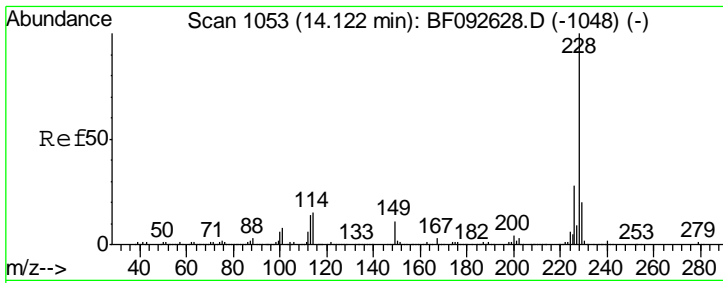


#79  
 Butylbenzylphthalate  
 Concen: 0.03 ng  
 RT: 13.39 min Scan# 989  
 Delta R.T. -0.05 min  
 Lab File: BF093329.D  
 Acq: 2 Mar 2017 19:10

Tgt Ion: 149 Resp: 390

Ion	Ratio	Lower	Upper
149	100		
91	105.8	63.9	95.9#
206	0.0	14.6	21.8#

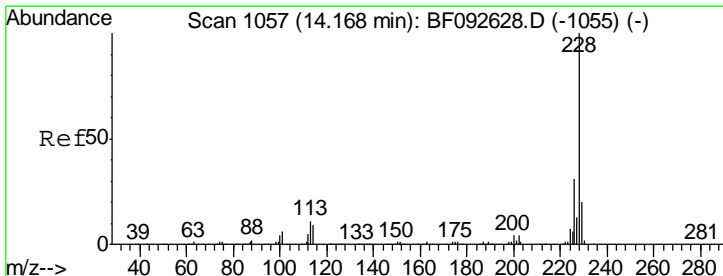
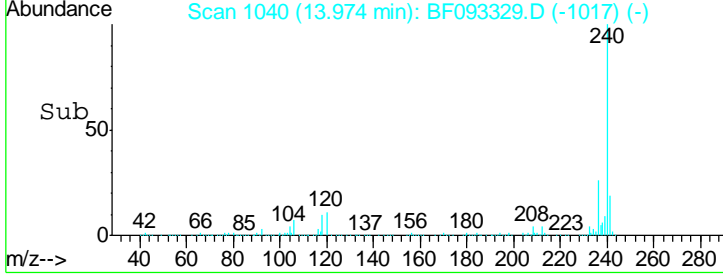
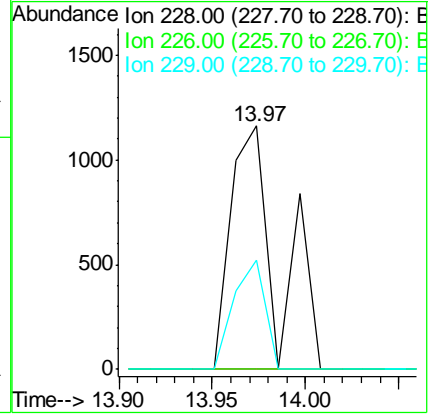
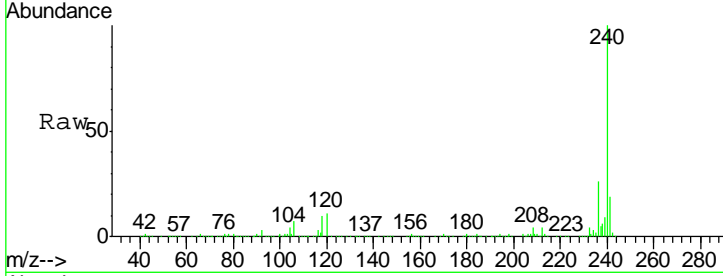




#80  
 Benzo(a)anthracene  
 Concen: 0.08 ng  
 RT: 13.97 min Scan# 1040  
 Delta R.T. -0.03 min  
 Lab File: BF093329.D  
 Acq: 2 Mar 2017 19:10

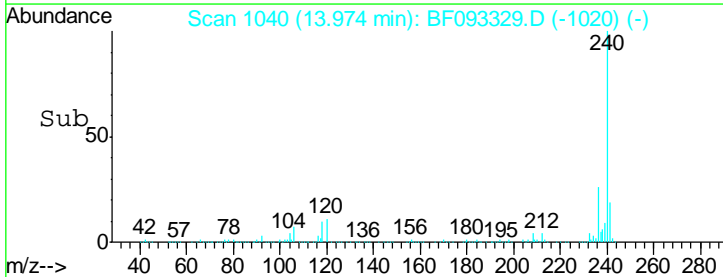
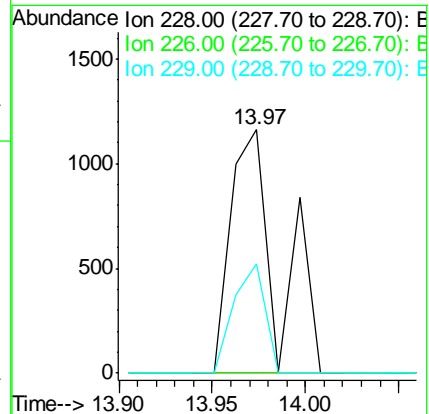
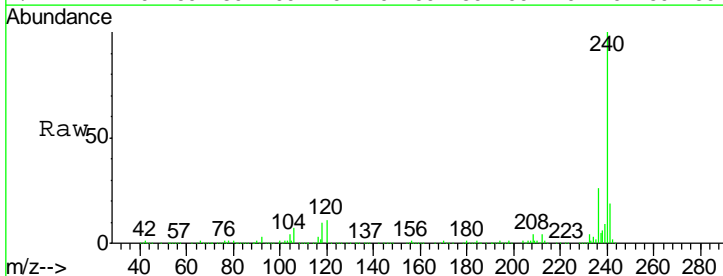
**Instrument :**  
 BNA\_F  
**ClientSampled :**  
 CPS133051

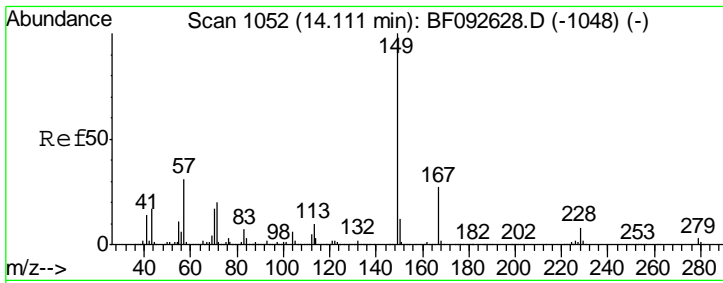
Tgt Ion	Resp	Lower	Upper
228	100		
226	0.0	22.4	33.6#
229	44.8	16.2	24.4#



#82  
 Chrysene  
 Concen: 0.08 ng  
 RT: 13.97 min Scan# 1040  
 Delta R.T. -0.07 min  
 Lab File: BF093329.D  
 Acq: 2 Mar 2017 19:10

Tgt Ion	Resp	Lower	Upper
228	100		
226	0.0	25.4	38.0#
229	44.8	16.2	24.2#

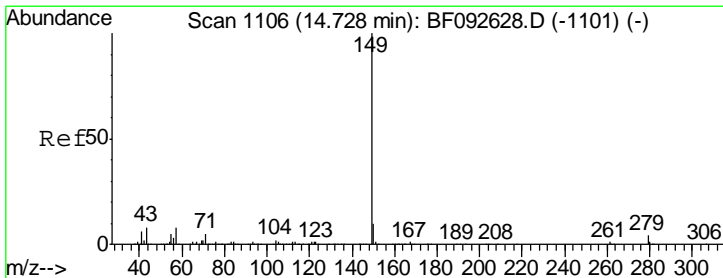
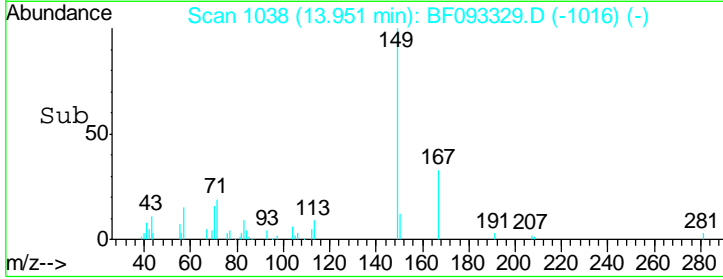
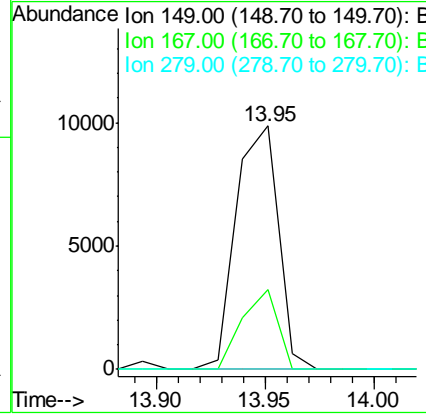
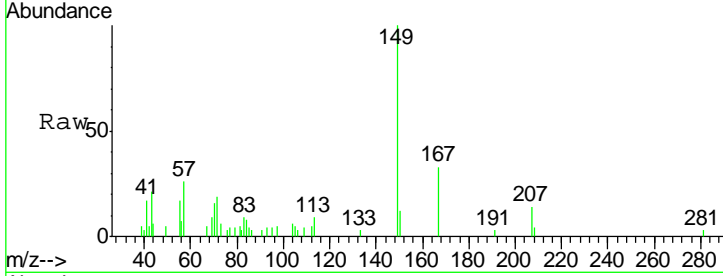




#83  
 Bis(2-ethylhexyl)phthalate  
 Concen: 0.75 ng  
 RT: 13.95 min Scan# 1038  
 Delta R.T. -0.05 min  
 Lab File: BF093329.D  
 Acq: 2 Mar 2017 19:10

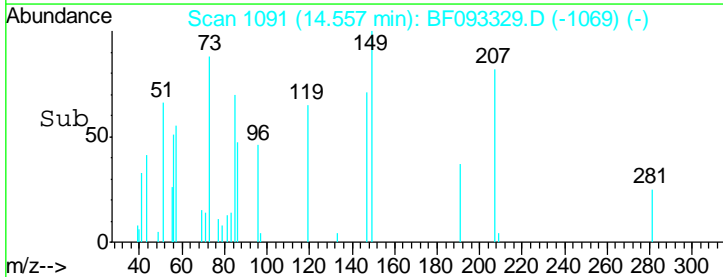
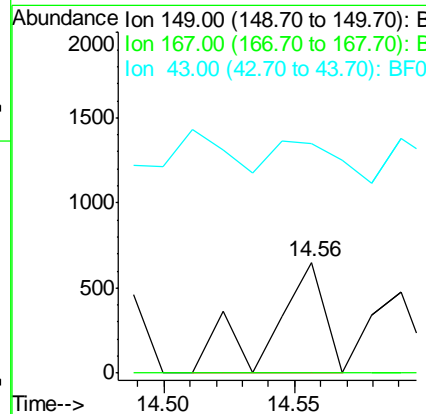
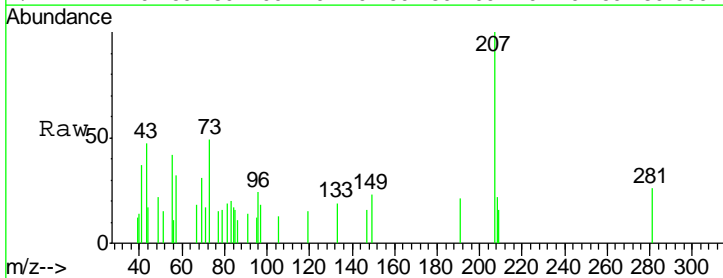
Instrument :  
 BNA\_F  
 ClientSampled :  
 CPS133051

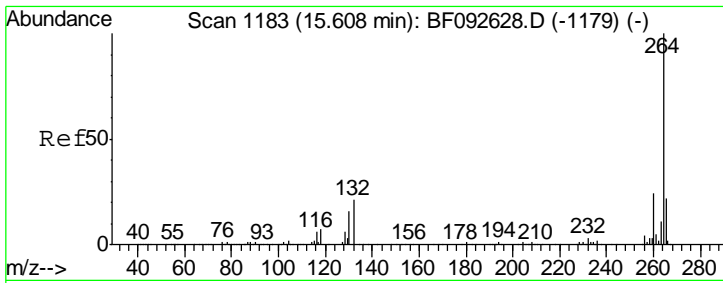
Tgt Ion	Resp	Lower	Upper
149	13282		
167	32.6	20.2	30.4#
279	0.0	1.8	2.8#



#84  
 Di-n-octyl phthalate  
 Concen: 0.03 ng  
 RT: 14.56 min Scan# 1091  
 Delta R.T. -0.05 min  
 Lab File: BF093329.D  
 Acq: 2 Mar 2017 19:10

Tgt Ion	Resp	Lower	Upper
149	927		
167	0.0	1.3	1.9#
43	45.7	8.9	13.3#

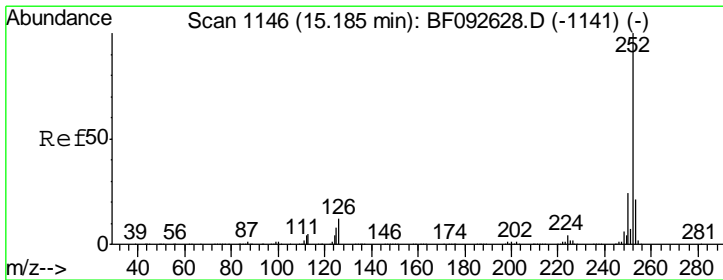
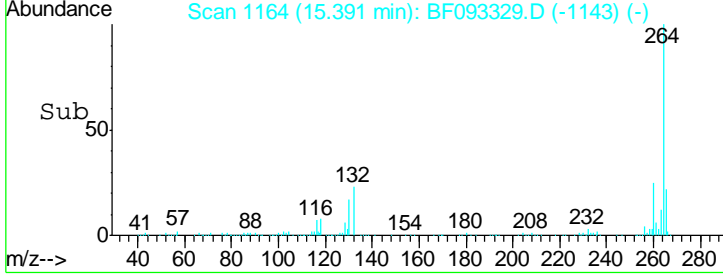
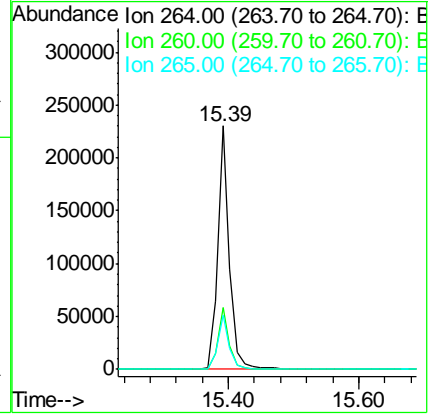
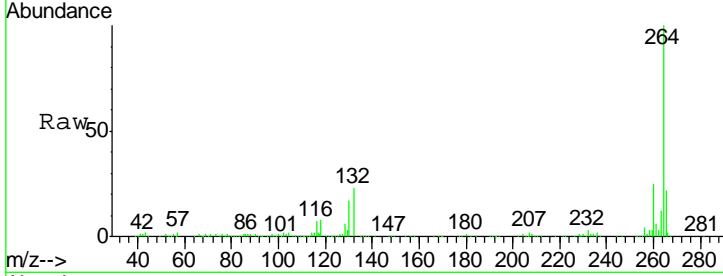




#86  
 Perylene-d12  
 Concen: 20.00 ng  
 RT: 15.39 min Scan# 1164  
 Delta R.T. -0.06 min  
 Lab File: BF093329.D  
 Acq: 2 Mar 2017 19:10

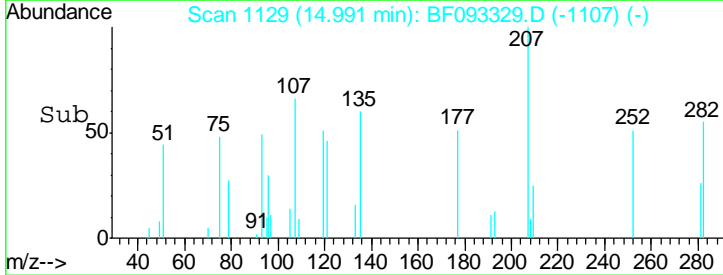
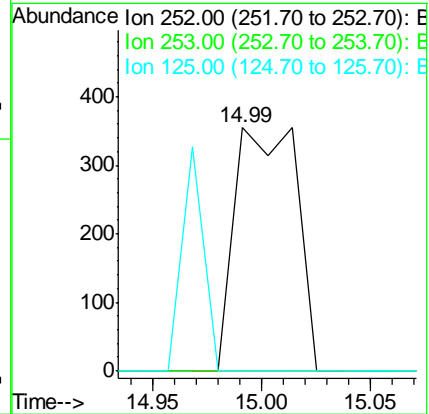
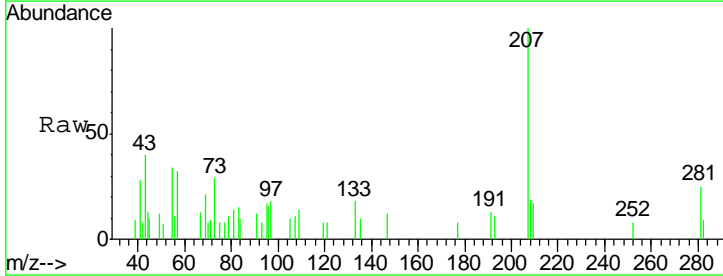
Instrument :  
 BNA\_F  
 ClientSampleId :  
 CPS133051

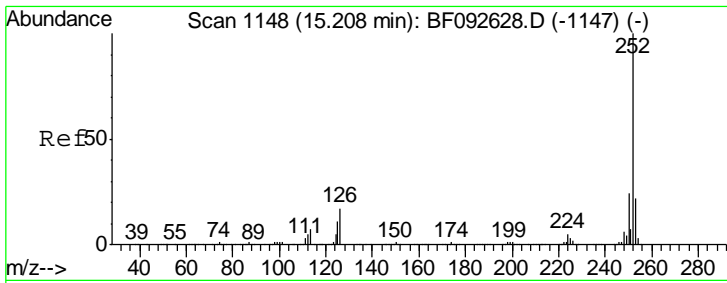
Tgt Ion	Resp	Lower	Upper
264	100		
260	25.5	19.2	28.8
265	22.5	17.4	26.0



#87  
 Benzo(b)fluoranthene  
 Concen: 0.04 ng  
 RT: 14.99 min Scan# 1129  
 Delta R.T. -0.05 min  
 Lab File: BF093329.D  
 Acq: 2 Mar 2017 19:10

Tgt Ion	Resp	Lower	Upper
252	100		
253	0.0	18.2	27.4#
125	0.0	9.8	14.6#

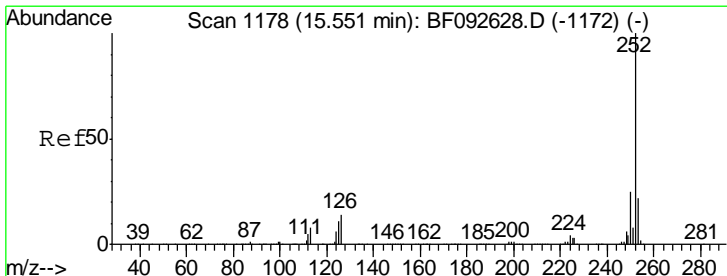
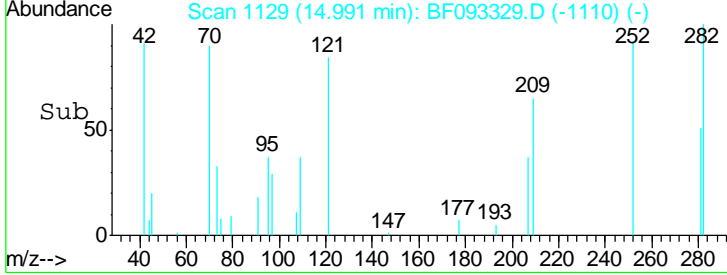
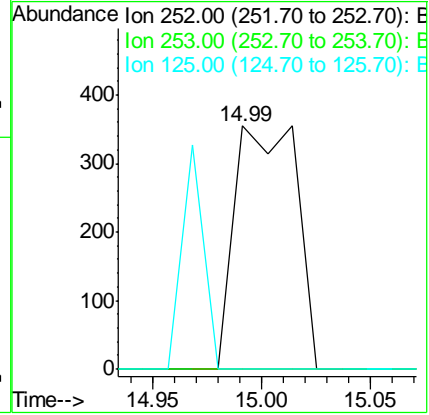
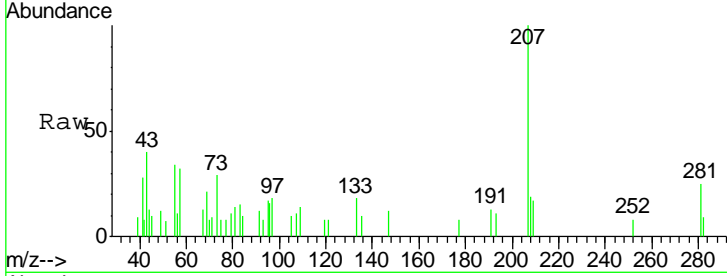




#88  
 Benzo(k)fluoranthene  
 Concen: 0.04 ng  
 RT: 14.99 min Scan# 1129  
 Delta R.T. -0.08 min  
 Lab File: BF093329.D  
 Acq: 2 Mar 2017 19:10

Instrument :  
 BNA\_F  
 ClientSampleId :  
 CPS133051

Tgt Ion	Resp	Lower	Upper
252	100		
253	0.0	18.5	27.7#
125	0.0	8.9	13.3#



#89  
 Benzo(a)pyrene  
 Concen: 0.06 ng  
 RT: 15.39 min Scan# 1164  
 Delta R.T. 0.00 min  
 Lab File: BF093329.D  
 Acq: 2 Mar 2017 19:10

Tgt Ion	Resp	Lower	Upper
252	100		
253	52.0	18.2	27.2#
125	47.8	10.0	15.0#

