

Data Path : Z:\svoasrv\HPCHEM1\BNA_F\Data\BF030222\
 Data File : BF127141.D
 Acq On : 02 Mar 2022 12:17
 Operator : CG\JU
 Sample : N1689-03
 Misc :
 ALS Vial : 5 Sample Multiplier: 1

Instrument :
 BNA_F
 ClientSampleId :
 MW-39

Quant Time: Mar 03 00:56:01 2022
 Quant Method : Z:\svoasrv\HPCHEM1\BNA_F\Methods\8270-BF021622.M
 Quant Title : ASP BNA STANDARDS FOR 5 POINT CALIBRATION
 QLast Update : Tue Mar 01 23:57:09 2022
 Response via : Initial Calibration

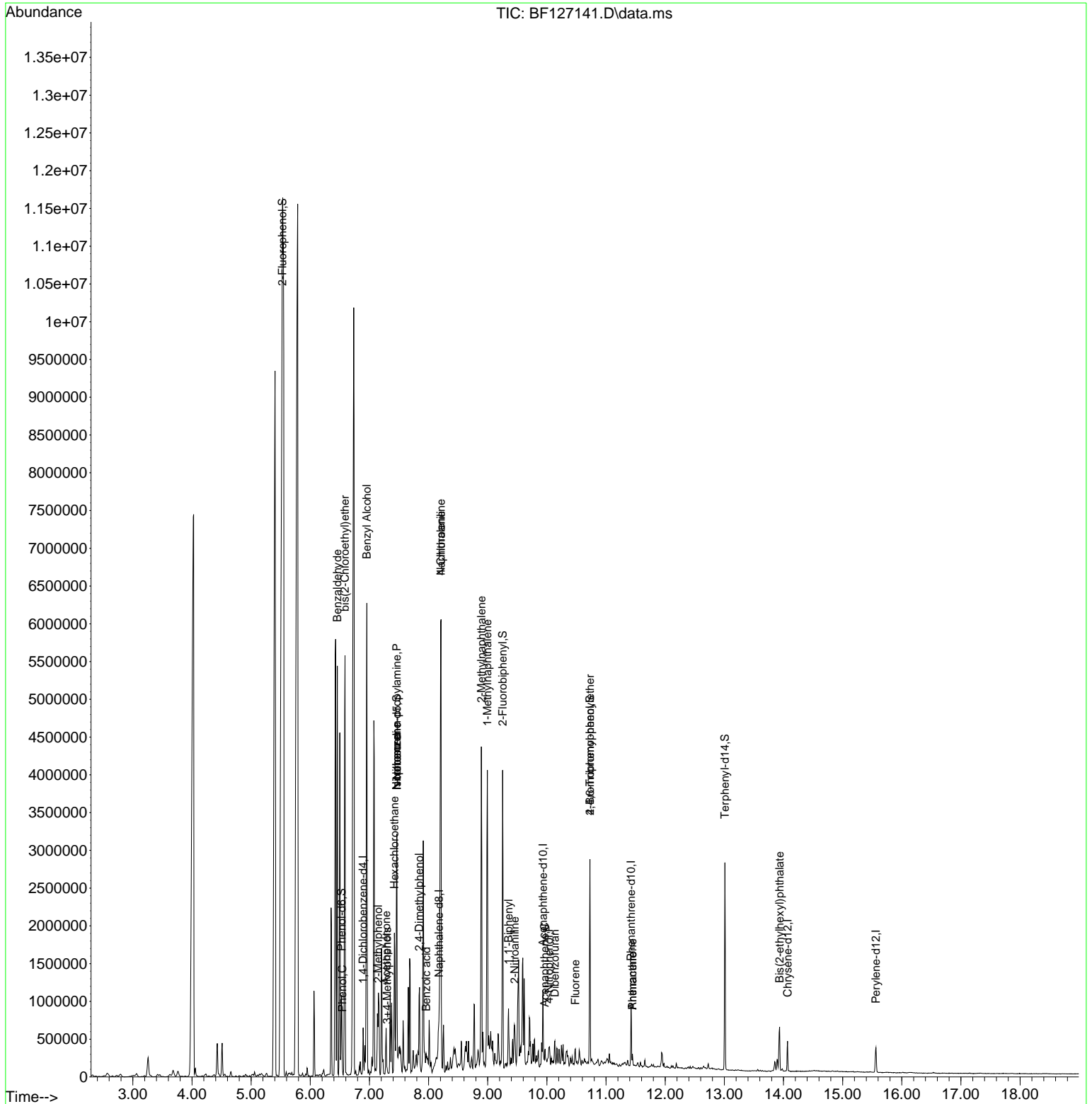
Compound	R.T.	QIon	Response	Conc	Units	Dev(Min)	
Internal Standards							
1) 1,4-Dichlorobenzene-d4	6.893	152	75798	20.000	ng	0.00	
21) Naphthalene-d8	8.175	136	310835	20.000	ng	# 0.00	
39) Acenaphthene-d10	9.934	164	160604	20.000	ng	0.00	
64) Phenanthrene-d10	11.422	188	259770	20.000	ng	# 0.00	
76) Chrysene-d12	14.069	240	122630	20.000	ng	# 0.00	
86) Perylene-d12	15.563	264	144722	20.000	ng	0.00	
System Monitoring Compounds							
5) 2-Fluorophenol	5.528	112	280280	57.151	ng	0.02	
7) Phenol-d6	6.528	99	362324	54.752	ng	0.00	
23) Nitrobenzene-d5	7.463	82	684322	99.373	ng	0.00	
42) 2,4,6-Tribromophenol	10.728	330	312107	168.785	ng	0.00	
45) 2-Fluorobiphenyl	9.251	172	1136839	104.207	ng	0.00	
79) Terphenyl-d14	13.010	244	873305	104.688	ng	0.00	
Target Compounds							
9) Benzaldehyde	6.457	77	217520	54.000	ng	#	1
10) Phenol	6.540	94	15517	2.321	ng	#	53
11) bis(2-Chloroethyl)ether	6.587	93	13230	2.523	ng	#	1
15) Benzyl Alcohol	6.957	79	216352	38.808	ng	#	9
17) 2-Methylphenol	7.146	107	12126	2.664	ng	#	76
18) Hexachloroethane	7.422	117	142537	64.620	ng	#	1
19) n-Nitroso-di-n-propyla...	7.463	70	101650	23.838	ng	#	81
20) 3+4-Methylphenols	7.298	107	15795	2.672	ng		90
22) Acetophenone	7.281	105	206393	25.219	ng	#	54
24) Nitrobenzene	7.463	77	24808	3.813	ng	#	14
25) Isophorone	7.463	82	680336	59.704	ng	#	69
27) 2,4-Dimethylphenol	7.840	122	30782	6.765	ng		89
31) Naphthalene	8.210	128	3365955	207.441	ng		96
32) Benzoic acid	7.963	122	11007	3.411	ng	#	43
33) 4-Chloroaniline	8.210	127	478306	74.891	ng	#	34
37) 2-Methylnaphthalene	8.892	142	1138308	108.114	ng		99
38) 1-Methylnaphthalene	8.992	142	850546	84.360	ng		99
46) 1,1'-Biphenyl	9.351	154	104010	8.174	ng		98
48) 2-Nitroaniline	9.457	65	8529	2.291	ng	#	38
52) Acenaphthene	9.963	154	22387	2.246	ng	#	81
55) Dibenzofuran	10.134	168	32904	2.401	ng	#	66
56) 4-Nitrophenol	10.034	139	4753	2.254	ng		81
58) Fluorene	10.481	166	41487	3.886	ng		89
67) 4-Bromophenyl-phenylether	10.728	248	18295	6.303	ng	#	1
71) Phenanthrene	11.445	178	43675	3.004	ng		99
72) Anthracene	11.445	178	43675	3.017	ng		98
84) Bis(2-ethylhexyl)phtha...	13.933	149	169620	25.616	ng	#	52

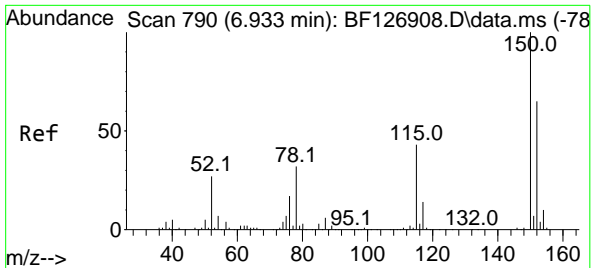
(#) = qualifier out of range (m) = manual integration (+) = signals summed

Data Path : Z:\svoasrv\HPCHEM1\BNA_F\Data\BF030222\
 Data File : BF127141.D
 Acq On : 02 Mar 2022 12:17
 Operator : CG\JU
 Sample : N1689-03
 Misc :
 ALS Vial : 5 Sample Multiplier: 1

Instrument :
 BNA_F
 ClientSampleId :
 MW-39

Quant Time: Mar 03 00:56:01 2022
 Quant Method : Z:\svoasrv\HPCHEM1\BNA_F\Methods\8270-BF021622.M
 Quant Title : ASP BNA STANDARDS FOR 5 POINT CALIBRATION
 QLast Update : Tue Mar 01 23:57:09 2022
 Response via : Initial Calibration

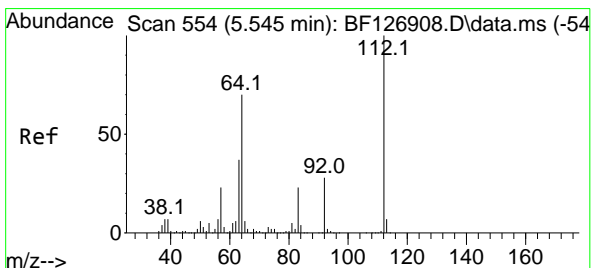
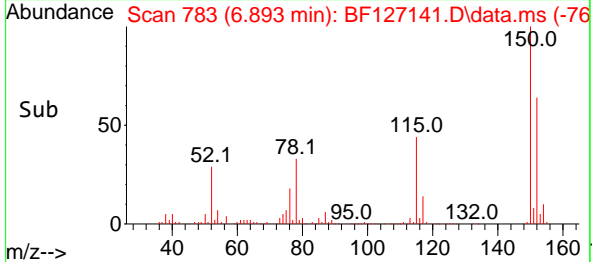
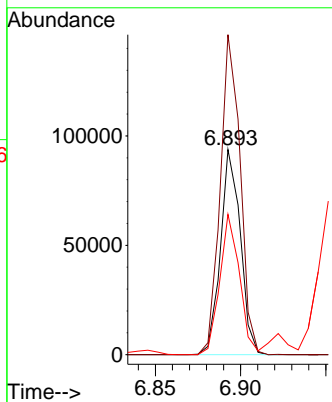
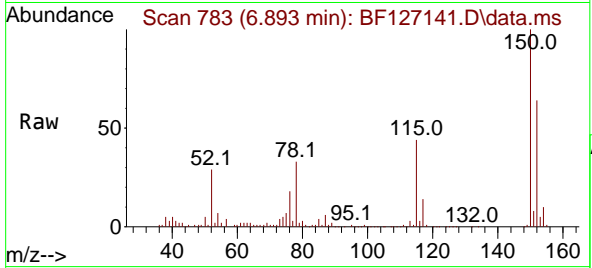




#1
 1,4-Dichlorobenzene-d4
 Concen: 20.000 ng
 RT: 6.893 min Scan# 71
 Delta R.T. -0.000 min
 Lab File: BF127141.D
 Acq: 02 Mar 2022 12:17

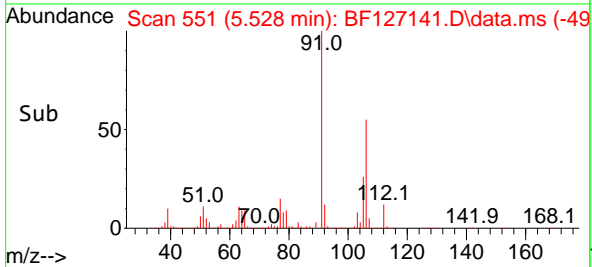
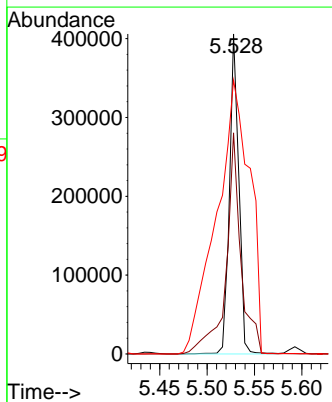
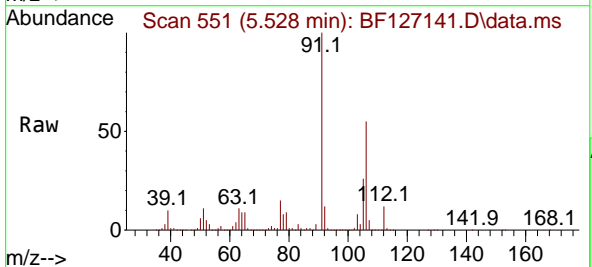
Instrument :
 BNA_F
 ClientSampleId :
 MW-39

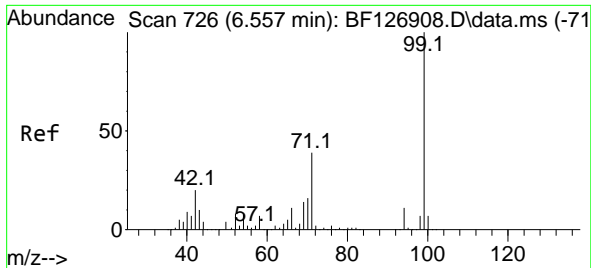
Tgt Ion:152 Resp: 75798
 Ion Ratio Lower Upper
 152 100
 150 156.0 128.1 192.1
 115 68.4 56.7 85.1



#5
 2-Fluorophenol
 Concen: 57.151 ng
 RT: 5.528 min Scan# 551
 Delta R.T. 0.018 min
 Lab File: BF127141.D
 Acq: 02 Mar 2022 12:17

Tgt Ion:112 Resp: 280280
 Ion Ratio Lower Upper
 112 100
 64 69.1 49.5 74.3
 63 85.5 23.9 35.9#



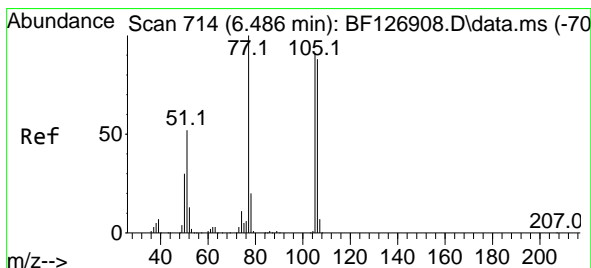
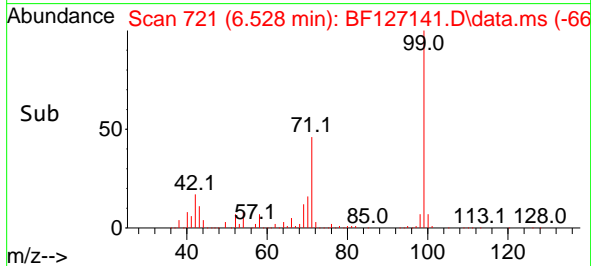
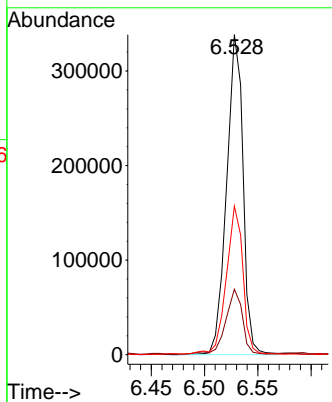
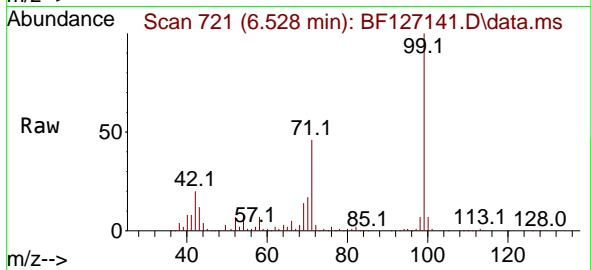


#7
 Phenol-d6
 Concen: 54.752 ng
 RT: 6.528 min Scan# 709
 Delta R.T. 0.006 min
 Lab File: BF127141.D
 Acq: 02 Mar 2022 12:17

Instrument :
 BNA_F
 ClientSampleId :
 MW-39

Tgt Ion: 99 Resp: 362324

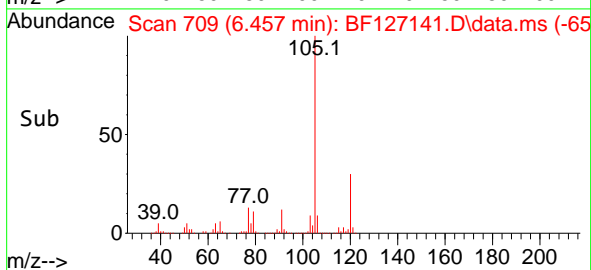
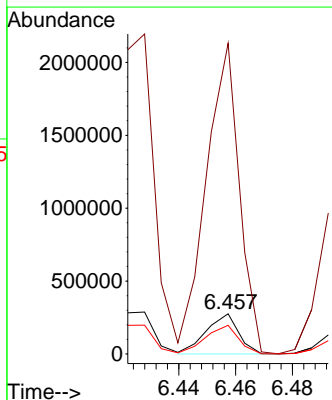
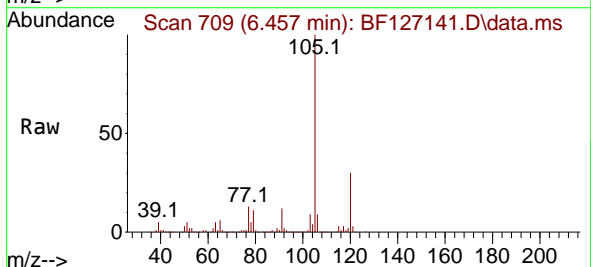
Ion	Ratio	Lower	Upper
99	100		
42	20.5	14.2	21.4
71	46.5	24.3	36.5#

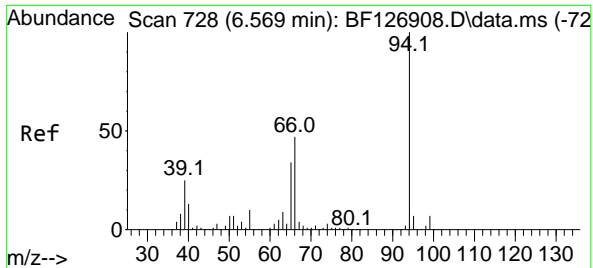


#9
 Benzaldehyde
 Concen: 54.000 ng
 RT: 6.457 min Scan# 709
 Delta R.T. 0.012 min
 Lab File: BF127141.D
 Acq: 02 Mar 2022 12:17

Tgt Ion: 77 Resp: 217520

Ion	Ratio	Lower	Upper
77	100		
105	772.7	74.9	114.9#
106	71.1	72.4	112.4#

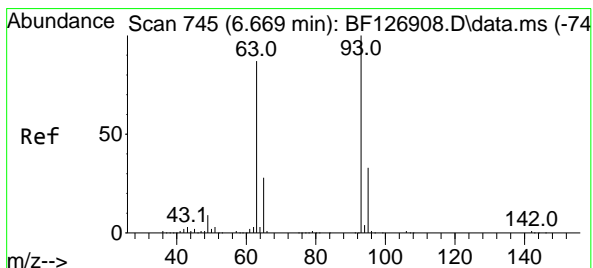
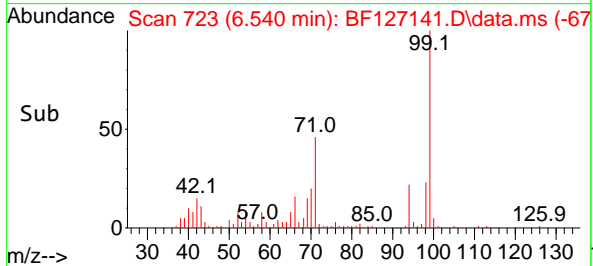
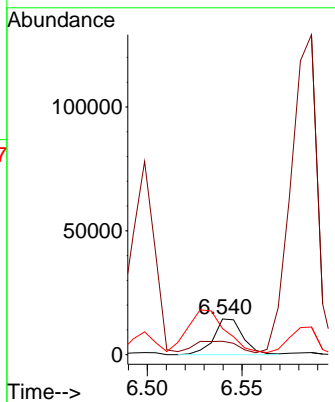
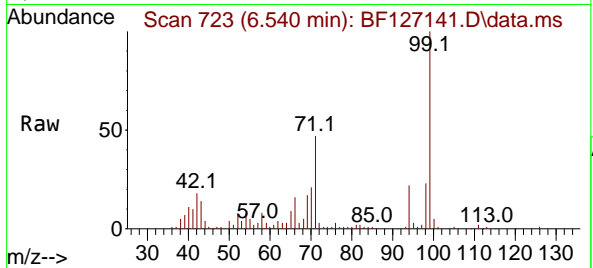




#10
Pheno1
Concen: 2.321 ng
RT: 6.540 min Scan# 710
Delta R.T. 0.000 min
Lab File: BF127141.D
Acq: 02 Mar 2022 12:17

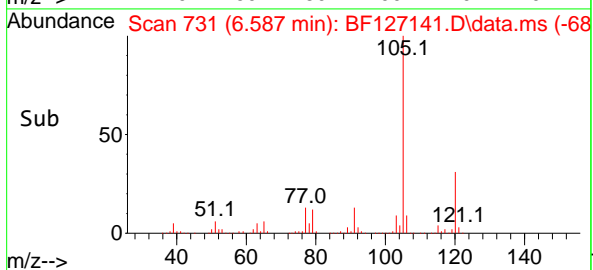
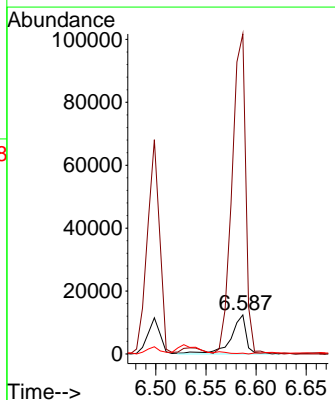
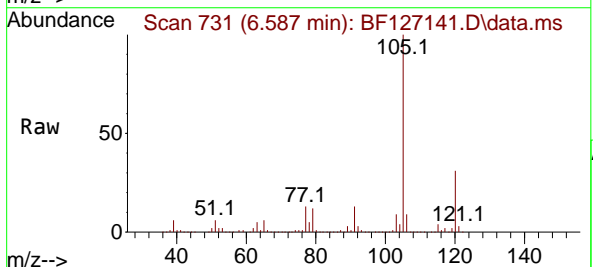
Instrument :
BNA_F
ClientSampleId :
MW-39

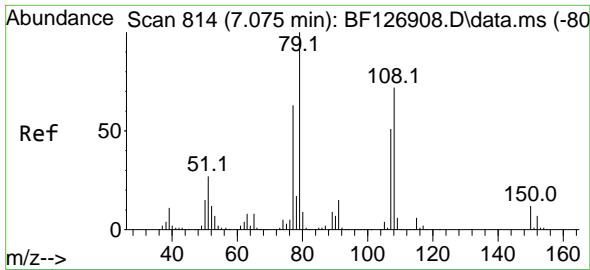
Tgt Ion: 94 Resp: 15517
Ion Ratio Lower Upper
94 100
65 37.9 7.2 47.2
66 73.4 14.5 54.5#



#11
bis(2-Chloroethyl)ether
Concen: 2.523 ng
RT: 6.587 min Scan# 731
Delta R.T. -0.041 min
Lab File: BF127141.D
Acq: 02 Mar 2022 12:17

Tgt Ion: 93 Resp: 13230
Ion Ratio Lower Upper
93 100
63 821.0 60.5 100.5#
95 1.9 12.9 52.9#

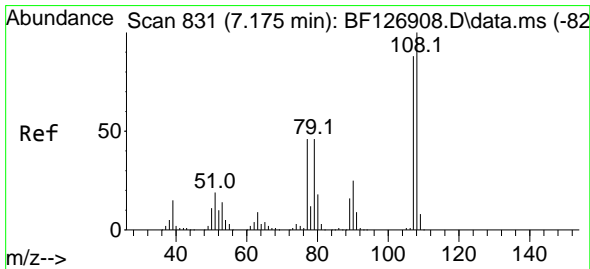
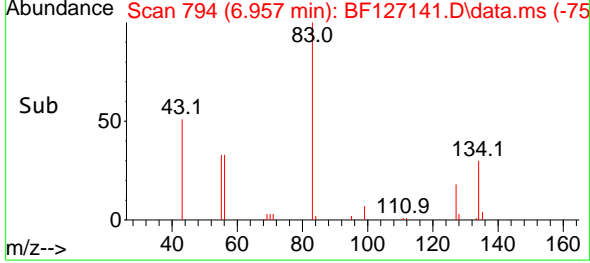
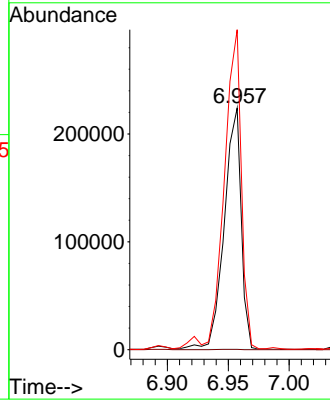
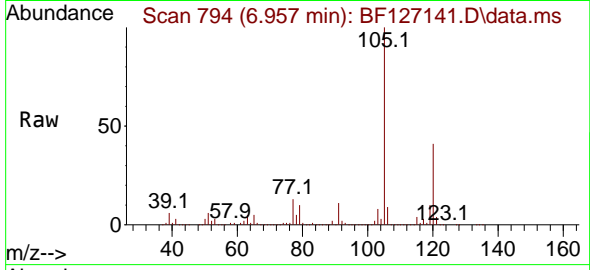




#15
 Benzyl Alcohol
 Concen: 38.808 ng
 RT: 6.957 min Scan# 714
 Delta R.T. -0.076 min
 Lab File: BF127141.D
 Acq: 02 Mar 2022 12:17

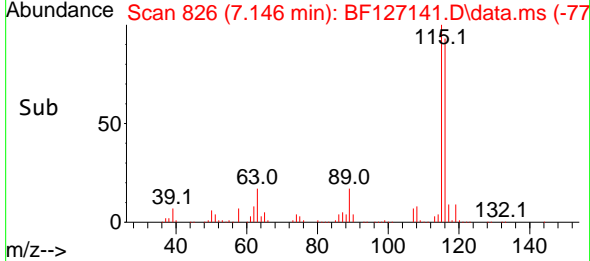
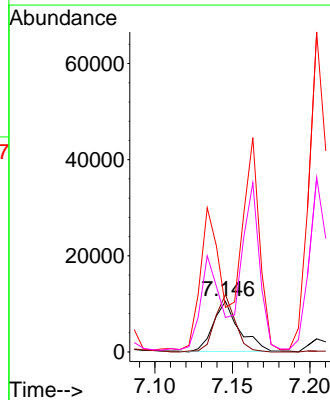
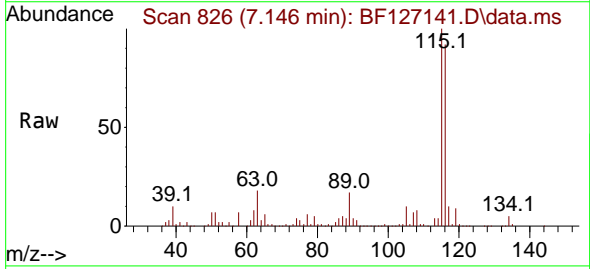
Instrument :
 BNA_F
 ClientSampleId :
 MW-39

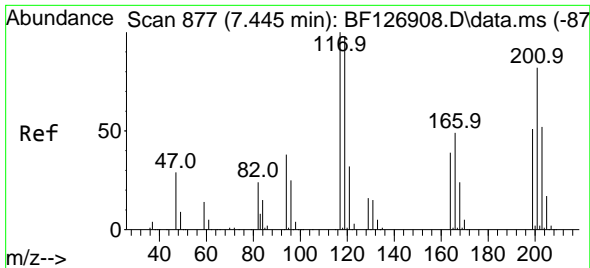
Tgt Ion: 79 Resp: 216352
 Ion Ratio Lower Upper
 79 100
 108 0.1 63.2 94.8#
 77 132.4 49.4 74.2#



#17
 2-Methylphenol
 Concen: 2.664 ng
 RT: 7.146 min Scan# 826
 Delta R.T. 0.000 min
 Lab File: BF127141.D
 Acq: 02 Mar 2022 12:17

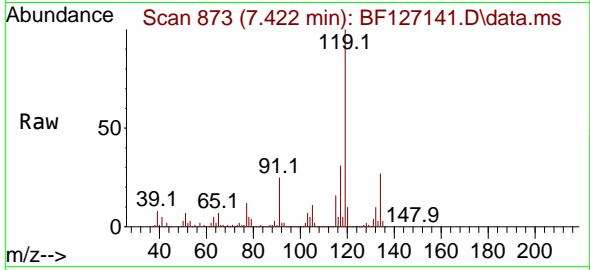
Tgt Ion: 107 Resp: 12126
 Ion Ratio Lower Upper
 107 100
 108 113.4 93.4 140.0
 77 87.7 36.1 54.1#
 79 67.9 34.9 52.3#





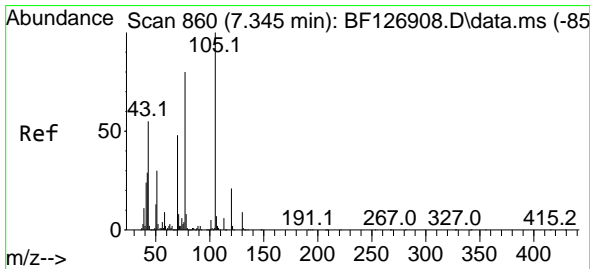
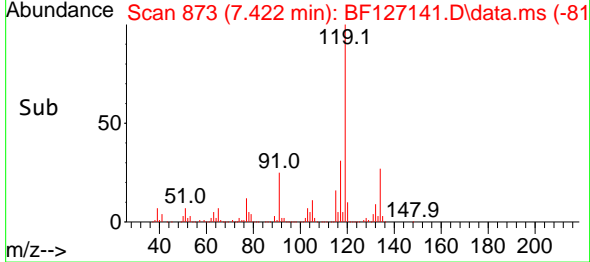
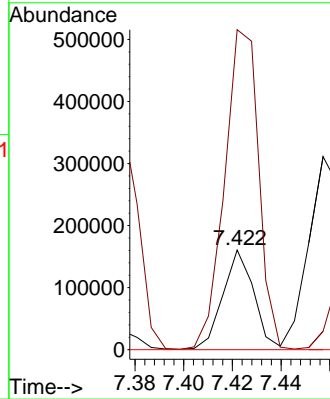
#18
 Hexachloroethane
 Concen: 64.620 ng
 RT: 7.422 min Scan# 81
 Delta R.T. 0.018 min
 Lab File: BF127141.D
 Acq: 02 Mar 2022 12:17

Instrument :
 BNA_F
 ClientSampleId :
 MW-39



Tgt Ion: 117 Resp: 142537

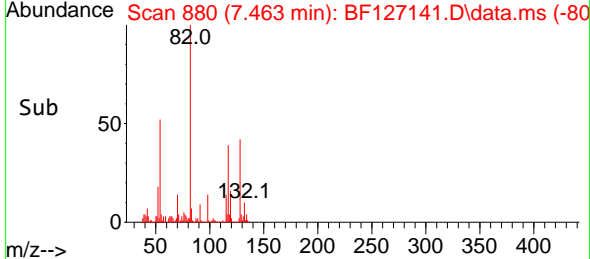
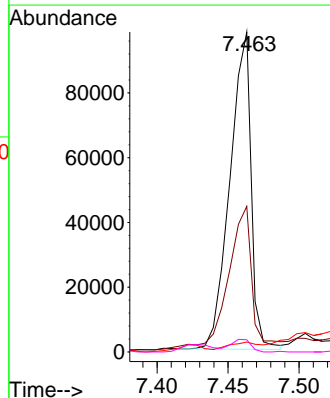
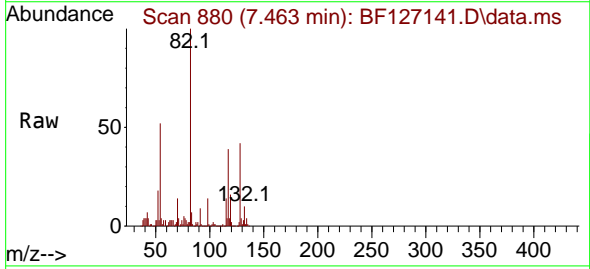
Ion	Ratio	Lower	Upper
117	100		
119	320.8	75.4	113.0#
201	0.0	56.8	85.2#

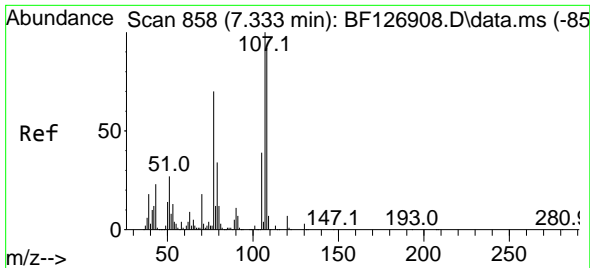


#19
 n-Nitroso-di-n-propylamine
 Concen: 23.838 ng
 RT: 7.463 min Scan# 880
 Delta R.T. 0.159 min
 Lab File: BF127141.D
 Acq: 02 Mar 2022 12:17

Tgt Ion: 70 Resp: 101650

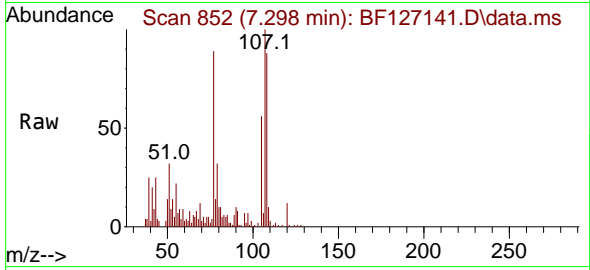
Ion	Ratio	Lower	Upper
70	100		
42	45.5	45.8	68.8#
101	3.1	6.9	10.3#
130	3.8	14.4	21.6#





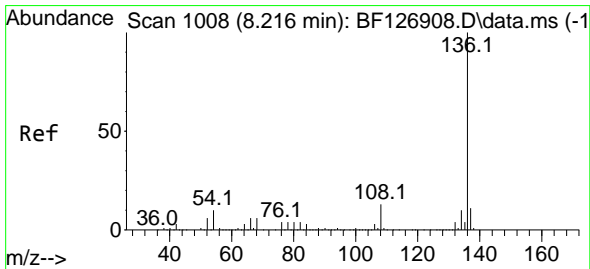
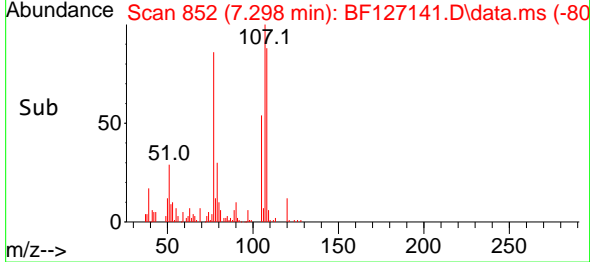
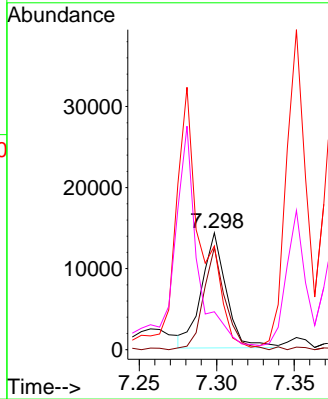
#20
 3+4-Methylphenols
 Concen: 2.672 ng
 RT: 7.298 min Scan# 81
 Delta R.T. 0.000 min
 Lab File: BF127141.D
 Acq: 02 Mar 2022 12:17

Instrument :
 BNA_F
 ClientSampleId :
 MW-39



Tgt Ion:107 Resp: 15795

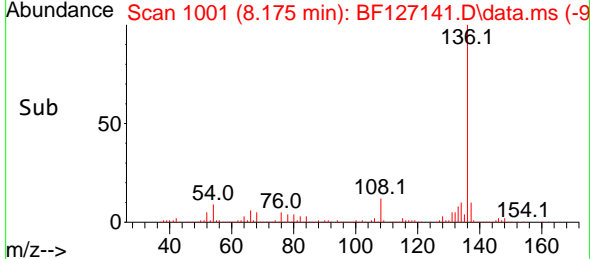
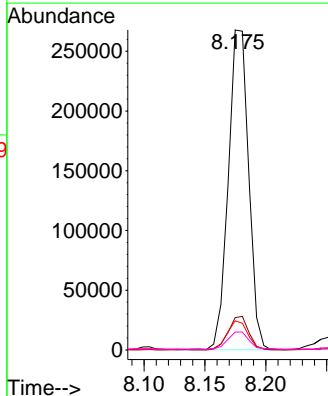
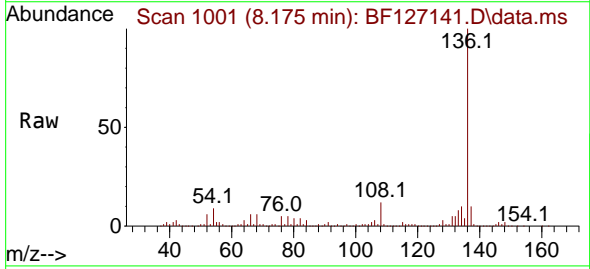
Ion	Ratio	Lower	Upper
107	100		
108	87.6	72.4	112.4
77	88.9	83.8	123.8
79	32.5	8.5	48.5

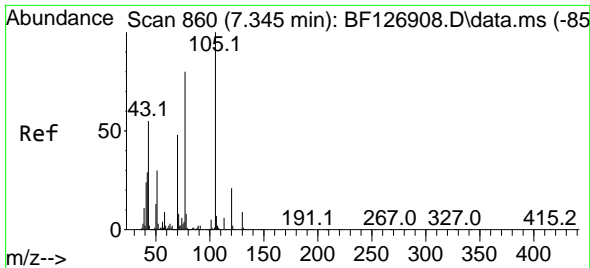


#21
 Naphthalene-d8
 Concen: 20.000 ng
 RT: 8.175 min Scan# 1001
 Delta R.T. 0.000 min
 Lab File: BF127141.D
 Acq: 02 Mar 2022 12:17

Tgt Ion:136 Resp: 310835

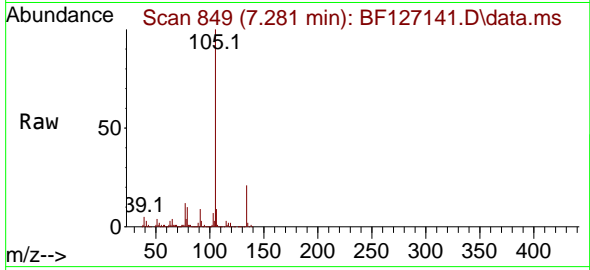
Ion	Ratio	Lower	Upper
136	100		
137	10.1	8.6	13.0
54	9.1	7.8	11.6
68	5.6	6.3	9.5



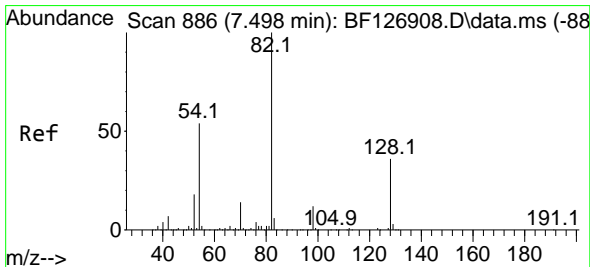
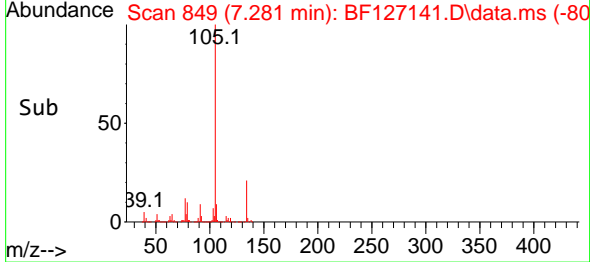
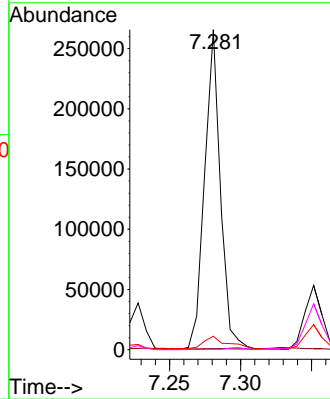


#22
 Acetophenone
 Concen: 25.219 ng
 RT: 7.281 min Scan# 849
 Delta R.T. -0.023 min
 Lab File: BF127141.D
 Acq: 02 Mar 2022 12:17

Instrument :
 BNA_F
 ClientSampleId :
 MW-39

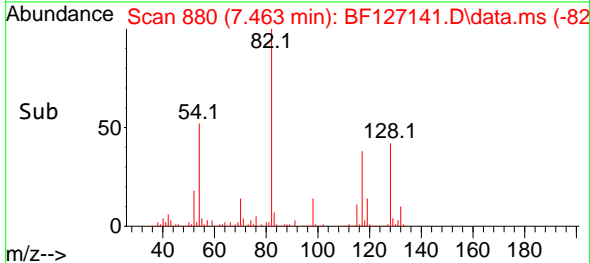
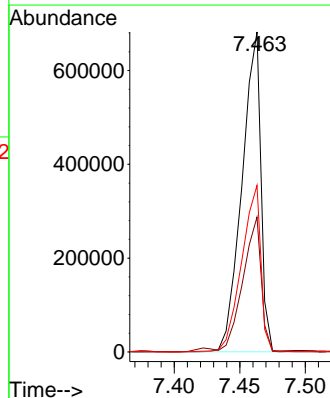
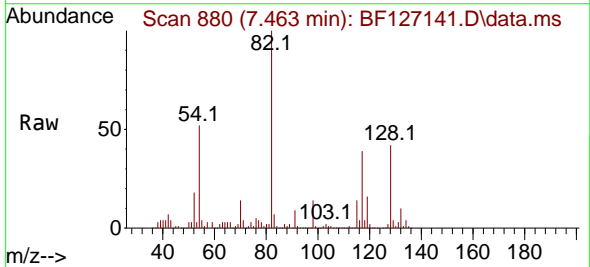


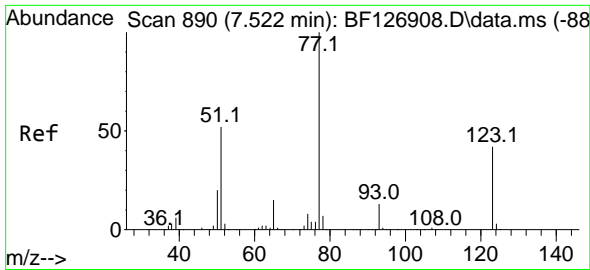
Tgt Ion: 105 Resp: 206393
 Ion Ratio Lower Upper
 105 100
 71 0.4 5.4 8.0#
 51 4.2 27.4 41.0#
 120 0.2 17.0 25.6#



#23
 Nitrobenzene-d5
 Concen: 99.373 ng
 RT: 7.463 min Scan# 880
 Delta R.T. 0.000 min
 Lab File: BF127141.D
 Acq: 02 Mar 2022 12:17

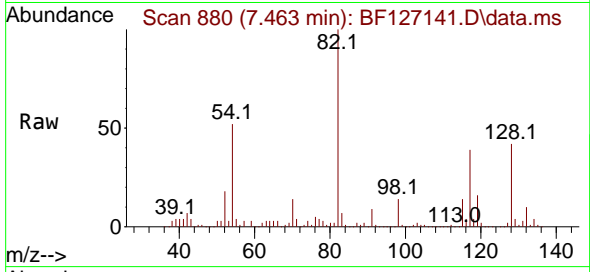
Tgt Ion: 82 Resp: 684322
 Ion Ratio Lower Upper
 82 100
 128 42.1 32.7 49.1
 54 52.1 41.7 62.5



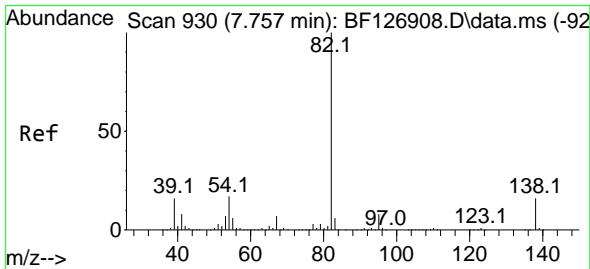
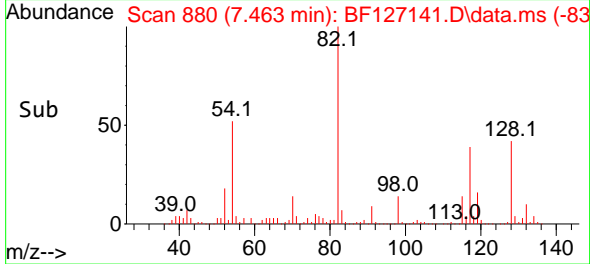
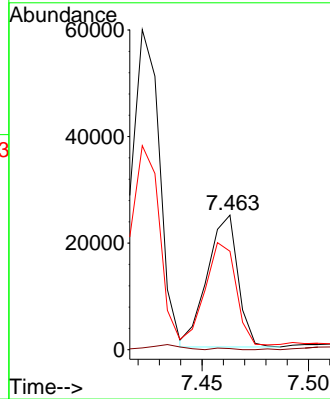


#24
 Nitrobenzene
 Concen: 3.813 ng
 RT: 7.463 min Scan# 880
 Delta R.T. -0.018 min
 Lab File: BF127141.D
 Acq: 02 Mar 2022 12:17

Instrument :
 BNA_F
 ClientSampleId :
 MW-39

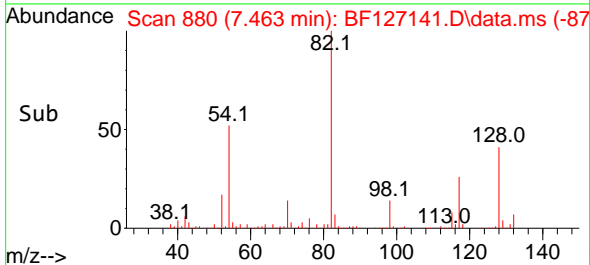
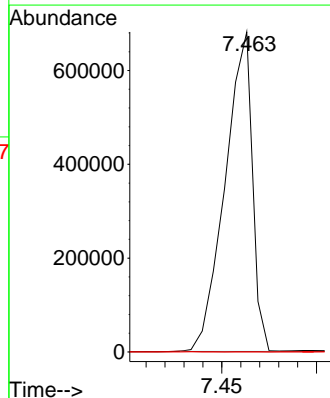
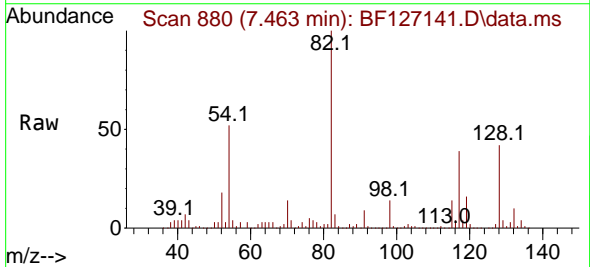


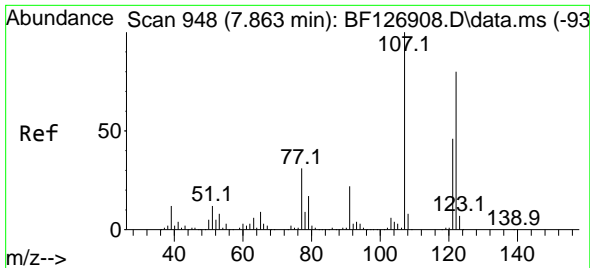
Tgt Ion: 77 Resp: 24808
 Ion Ratio Lower Upper
 77 100
 123 0.8 34.6 52.0#
 65 73.1 10.6 15.8#



#25
 Isophorone
 Concen: 59.704 ng
 RT: 7.463 min Scan# 880
 Delta R.T. -0.253 min
 Lab File: BF127141.D
 Acq: 02 Mar 2022 12:17

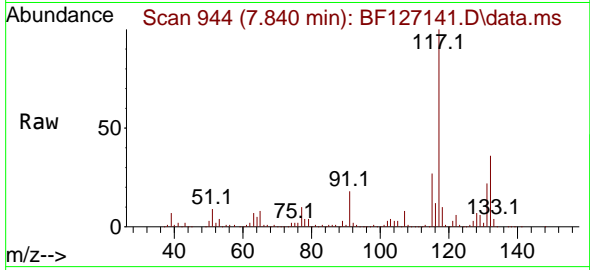
Tgt Ion: 82 Resp: 680336
 Ion Ratio Lower Upper
 82 100
 95 0.1 5.0 7.4#
 138 0.0 12.3 18.5#



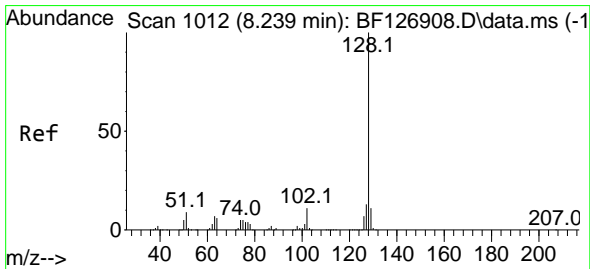
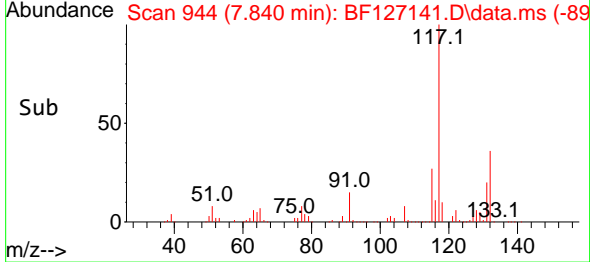
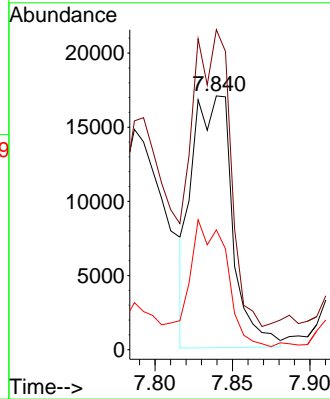


#27
 2,4-Dimethylphenol
 Concen: 6.765 ng
 RT: 7.840 min Scan# 94
 Delta R.T. 0.012 min
 Lab File: BF127141.D
 Acq: 02 Mar 2022 12:17

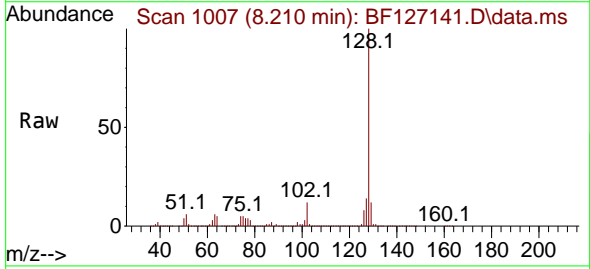
Instrument :
 BNA_F
 ClientSampleId :
 MW-39



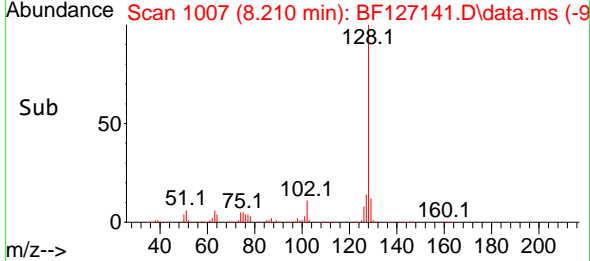
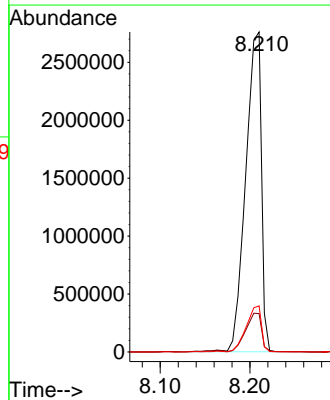
Tgt Ion:122 Resp: 30782
 Ion Ratio Lower Upper
 122 100
 107 126.1 91.2 136.8
 121 47.2 44.4 66.6

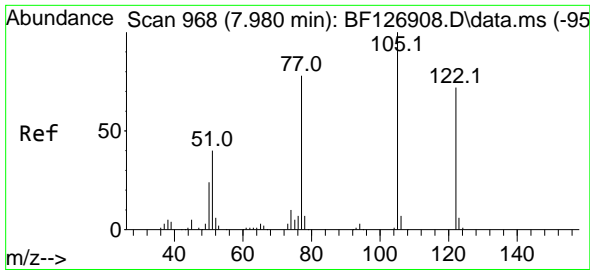


#31
 Naphthalene
 Concen: 207.441 ng
 RT: 8.210 min Scan# 1007
 Delta R.T. 0.012 min
 Lab File: BF127141.D
 Acq: 02 Mar 2022 12:17



Tgt Ion:128 Resp: 3365955
 Ion Ratio Lower Upper
 128 100
 129 12.0 8.6 13.0
 127 14.4 10.3 15.5

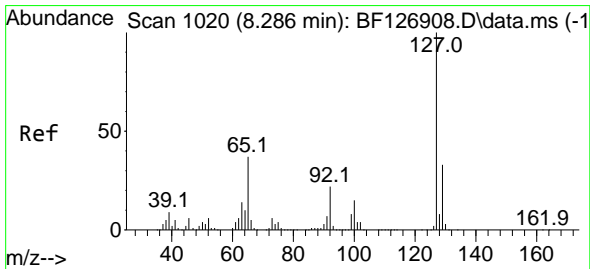
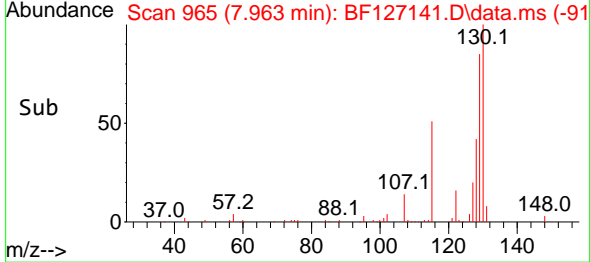
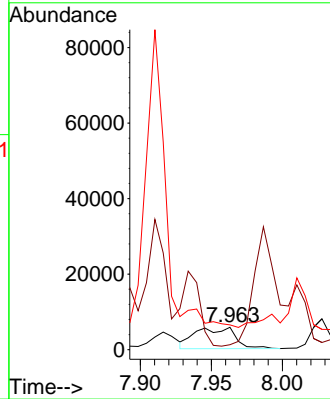
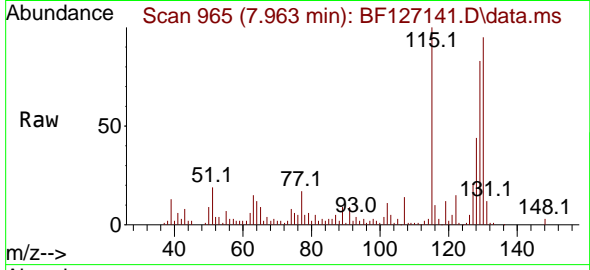




#32
 Benzoic acid
 Concen: 3.411 ng
 RT: 7.963 min Scan# 90
 Delta R.T. 0.012 min
 Lab File: BF127141.D
 Acq: 02 Mar 2022 12:17

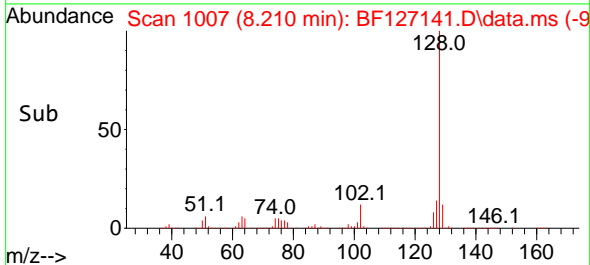
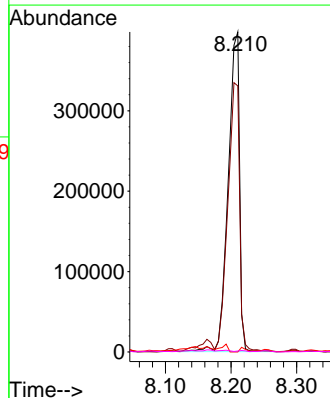
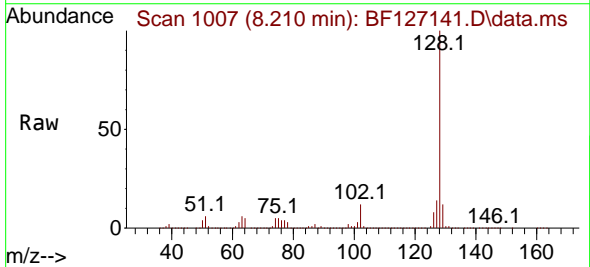
Instrument :
 BNA_F
 ClientSampleId :
 MW-39

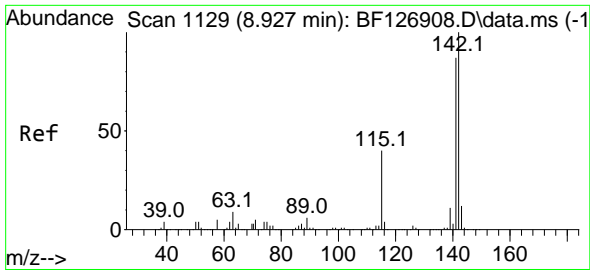
Tgt Ion:122 Resp: 11007
 Ion Ratio Lower Upper
 122 100
 105 22.3 101.0 141.0#
 77 110.3 74.5 114.5



#33
 4-Chloroaniline
 Concen: 74.891 ng
 RT: 8.210 min Scan# 1007
 Delta R.T. -0.035 min
 Lab File: BF127141.D
 Acq: 02 Mar 2022 12:17

Tgt Ion:127 Resp: 478306
 Ion Ratio Lower Upper
 127 100
 129 83.1 26.5 39.7#
 65 0.0 26.6 39.8#
 92 0.3 16.1 24.1#

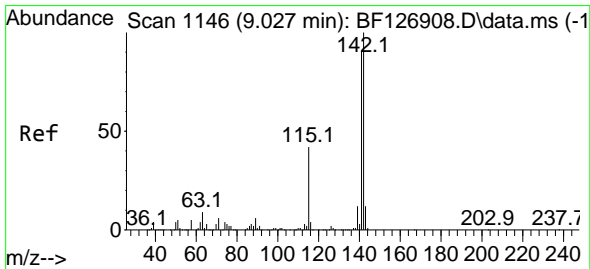
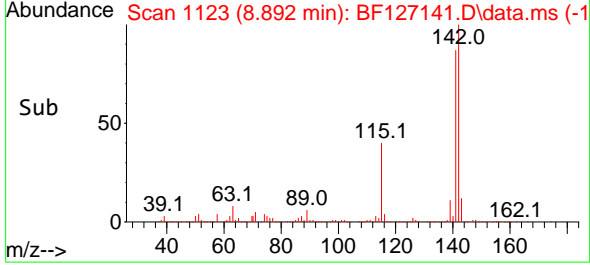
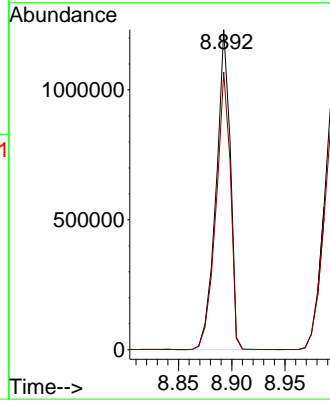
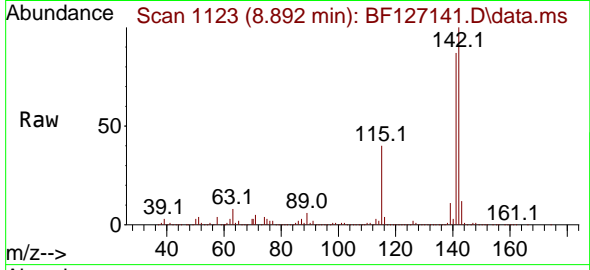




#37
 2-Methylnaphthalene
 Concen: 108.114 ng
 RT: 8.892 min Scan# 1114
 Delta R.T. 0.000 min
 Lab File: BF127141.D
 Acq: 02 Mar 2022 12:17

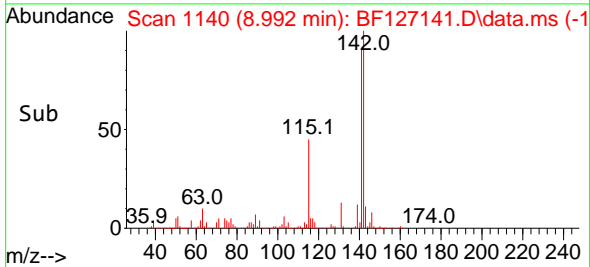
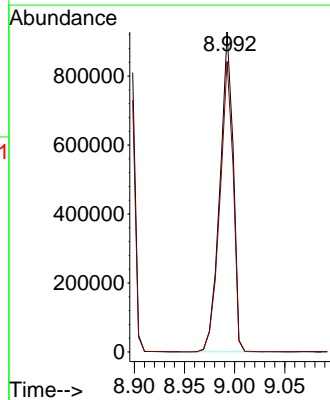
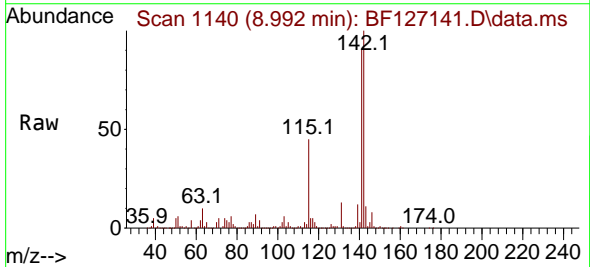
Instrument :
 BNA_F
 ClientSampleId :
 MW-39

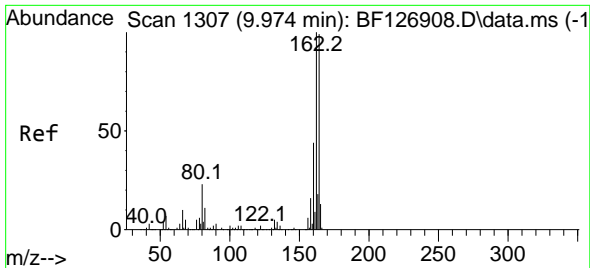
Tgt Ion:142 Resp: 1138308
 Ion Ratio Lower Upper
 142 100
 141 86.7 68.6 102.8



#38
 1-Methylnaphthalene
 Concen: 84.360 ng
 RT: 8.992 min Scan# 1140
 Delta R.T. 0.000 min
 Lab File: BF127141.D
 Acq: 02 Mar 2022 12:17

Tgt Ion:142 Resp: 850546
 Ion Ratio Lower Upper
 142 100
 141 90.8 72.1 108.1

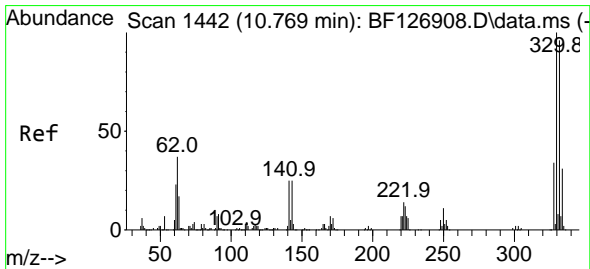
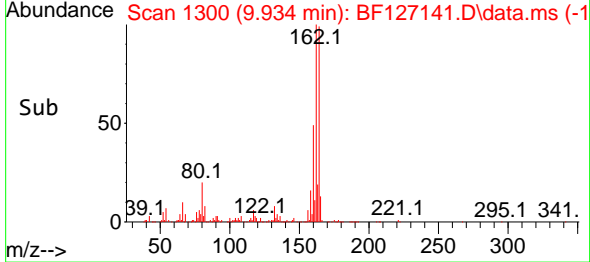
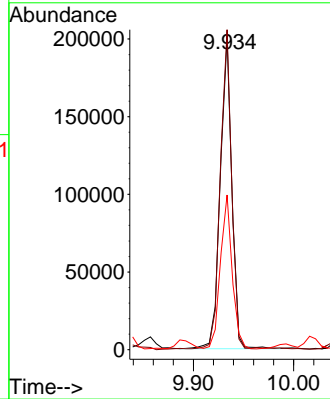
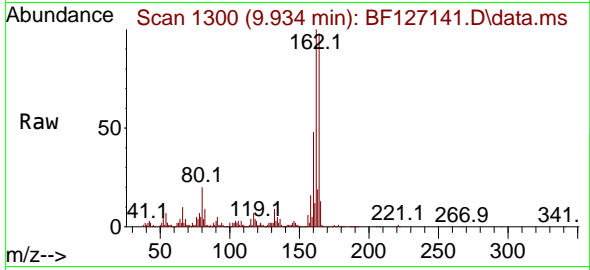




#39
 Acenaphthene-d10
 Concen: 20.000 ng
 RT: 9.934 min Scan# 11
 Delta R.T. -0.006 min
 Lab File: BF127141.D
 Acq: 02 Mar 2022 12:17

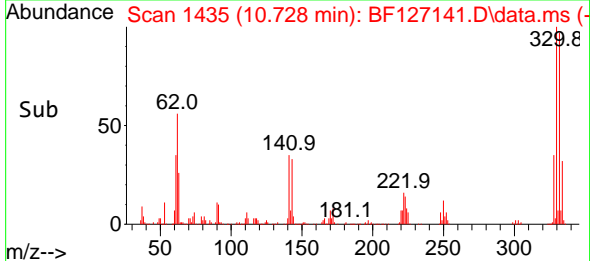
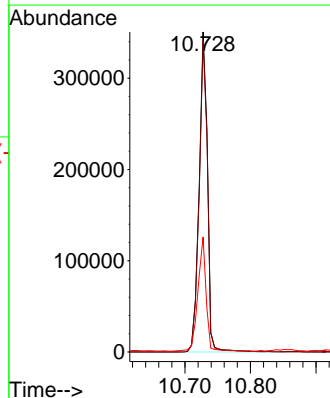
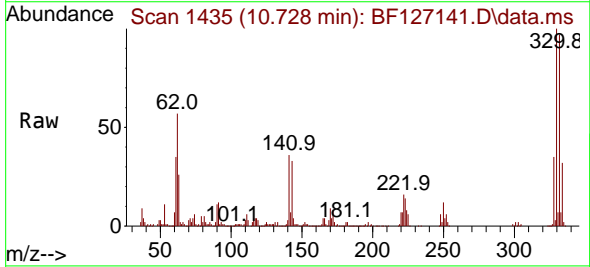
Instrument :
 BNA_F
 ClientSampleId :
 MW-39

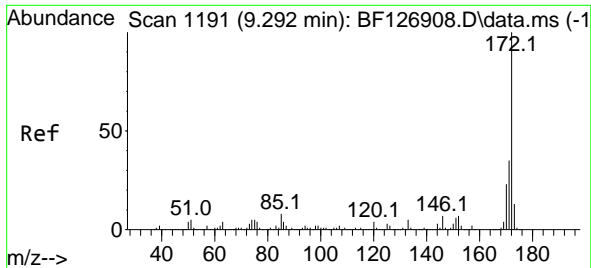
Tgt Ion:164 Resp: 160604
 Ion Ratio Lower Upper
 164 100
 162 102.5 81.4 122.0
 160 49.6 36.6 54.8



#42
 2,4,6-Tribromophenol
 Concen: 168.785 ng
 RT: 10.728 min Scan# 1435
 Delta R.T. 0.000 min
 Lab File: BF127141.D
 Acq: 02 Mar 2022 12:17

Tgt Ion:330 Resp: 312107
 Ion Ratio Lower Upper
 330 100
 332 97.1 76.0 114.0
 141 34.8 30.1 45.1

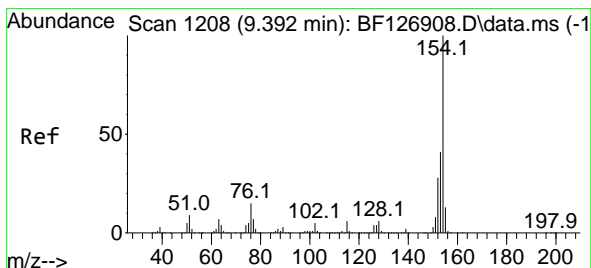
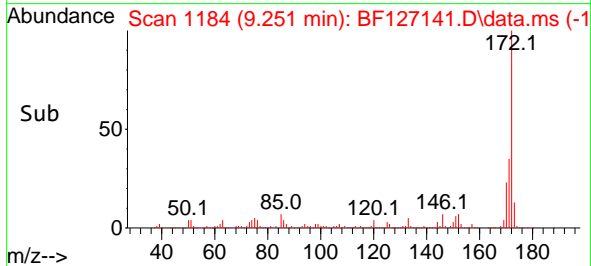
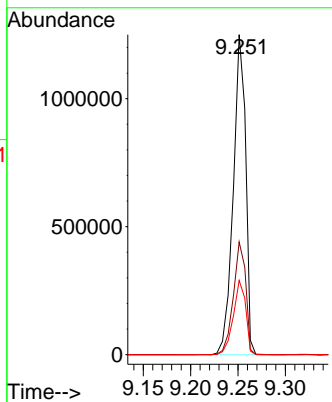
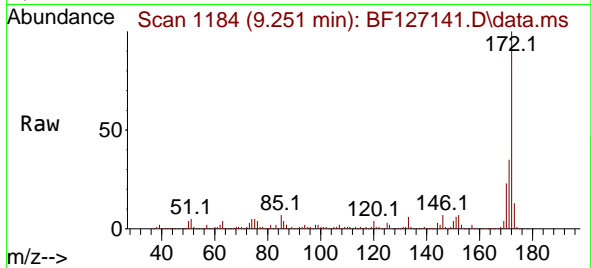




#45
 2-Fluorobiphenyl
 Concen: 104.207 ng
 RT: 9.251 min Scan# 1184
 Delta R.T. 0.000 min
 Lab File: BF127141.D
 Acq: 02 Mar 2022 12:17

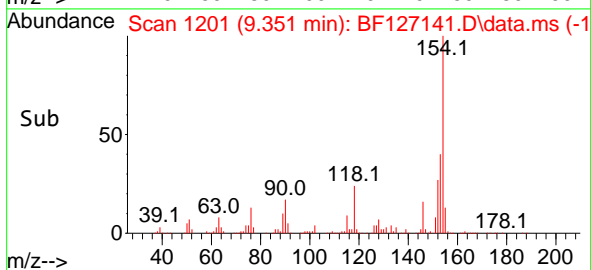
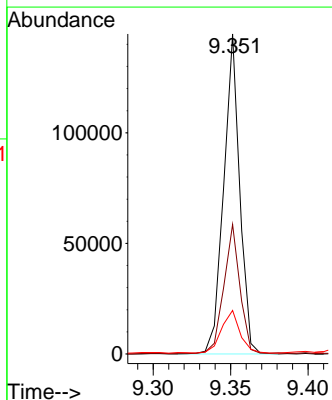
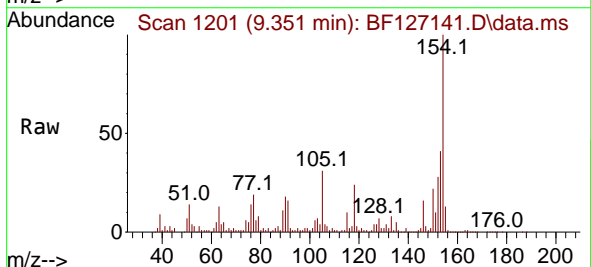
Instrument : BNA_F
 ClientSampleId : MW-39

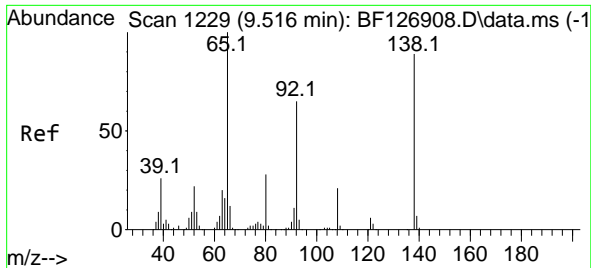
Tgt Ion:172 Resp: 1136839
 Ion Ratio Lower Upper
 172 100
 171 35.3 28.3 42.5
 170 23.2 19.0 28.6



#46
 1,1'-Biphenyl
 Concen: 8.174 ng
 RT: 9.351 min Scan# 1201
 Delta R.T. -0.006 min
 Lab File: BF127141.D
 Acq: 02 Mar 2022 12:17

Tgt Ion:154 Resp: 104010
 Ion Ratio Lower Upper
 154 100
 153 40.5 19.0 59.0
 76 13.6 0.0 34.5



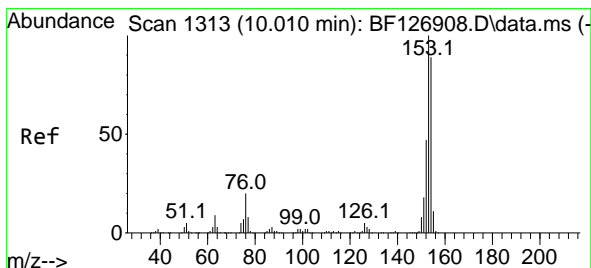
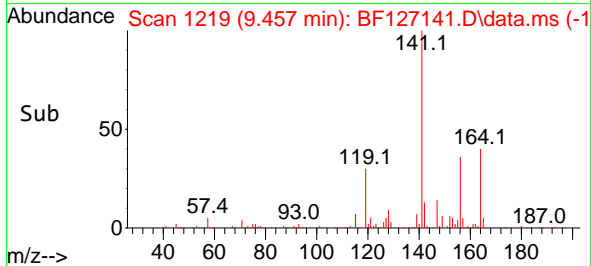
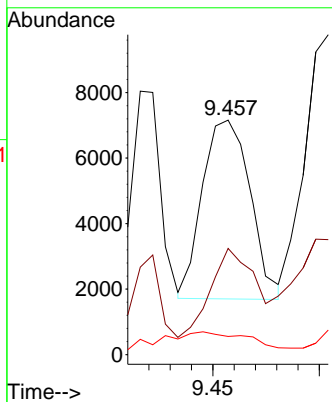
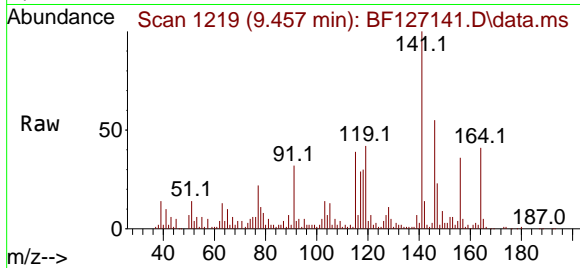


#48
 2-Nitroaniline
 Concen: 2.291 ng
 RT: 9.457 min Scan# 11
 Delta R.T. -0.023 min
 Lab File: BF127141.D
 Acq: 02 Mar 2022 12:17

Instrument :
 BNA_F
 ClientSampleId :
 MW-39

Tgt Ion: 65 Resp: 8529

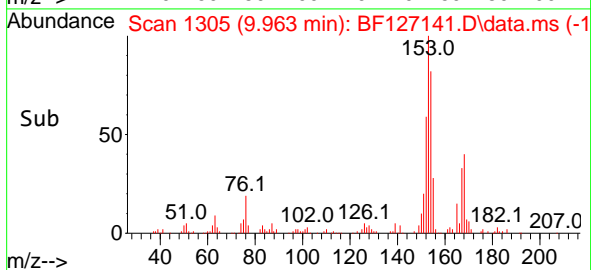
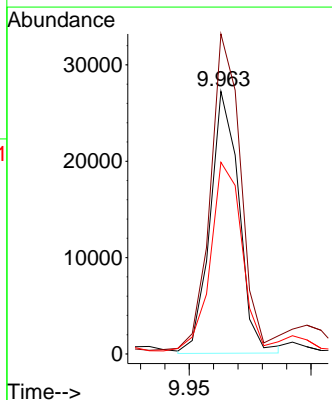
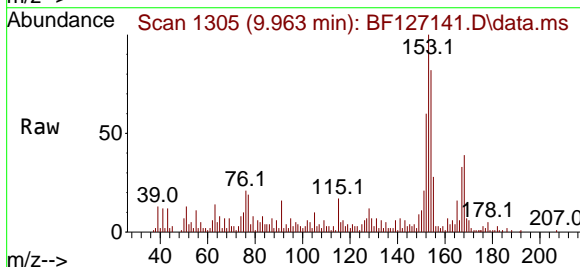
Ion	Ratio	Lower	Upper
65	100		
92	45.3	54.4	81.6#
138	7.8	72.5	108.7#

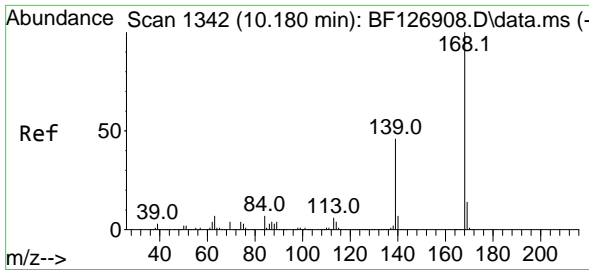


#52
 Acenaphthene
 Concen: 2.246 ng
 RT: 9.963 min Scan# 1305
 Delta R.T. -0.006 min
 Lab File: BF127141.D
 Acq: 02 Mar 2022 12:17

Tgt Ion: 154 Resp: 22387

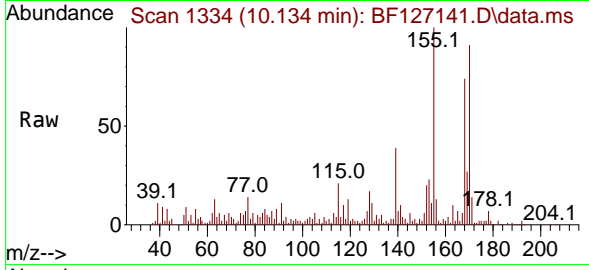
Ion	Ratio	Lower	Upper
154	100		
153	121.9	87.8	131.6
152	73.0	39.4	59.2#



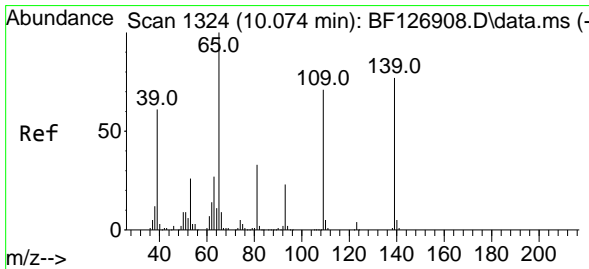
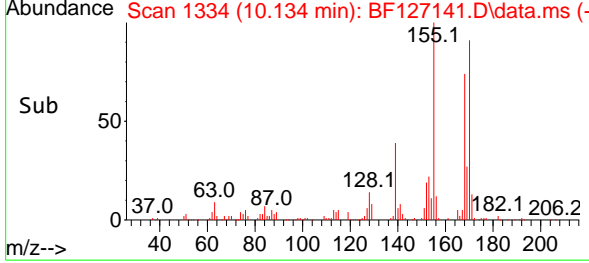
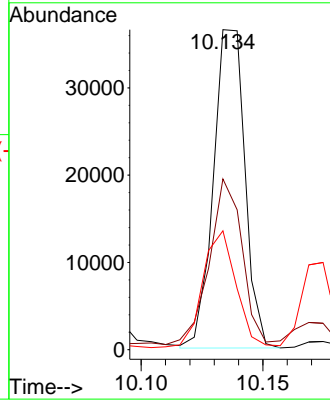


#55
 Dibenzofuran
 Concen: 2.401 ng
 RT: 10.134 min Scan# 111
 Delta R.T. -0.012 min
 Lab File: BF127141.D
 Acq: 02 Mar 2022 12:17

Instrument :
 BNA_F
 ClientSampleId :
 MW-39

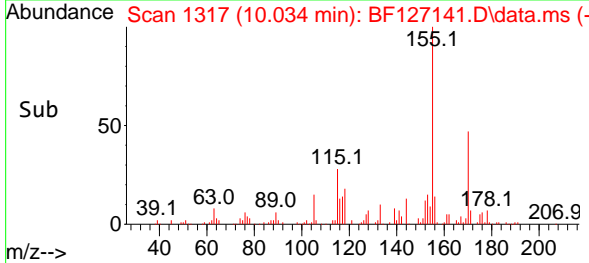
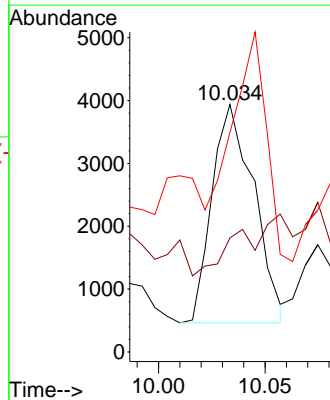
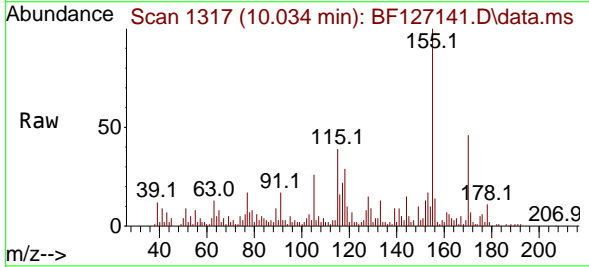


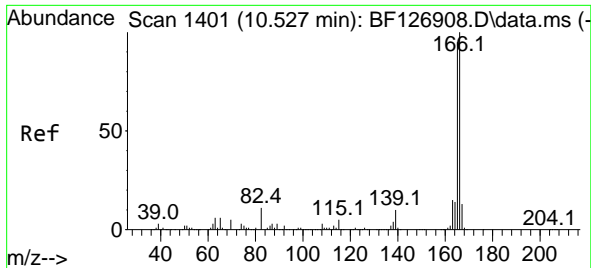
Tgt Ion:168 Resp: 32904
 Ion Ratio Lower Upper
 168 100
 139 53.4 30.6 46.0#
 169 37.1 10.0 15.0#



#56
 4-Nitrophenol
 Concen: 2.254 ng
 RT: 10.034 min Scan# 1317
 Delta R.T. -0.018 min
 Lab File: BF127141.D
 Acq: 02 Mar 2022 12:17

Tgt Ion:139 Resp: 4753
 Ion Ratio Lower Upper
 139 100
 109 46.1 44.1 84.1
 65 88.8 85.5 125.5

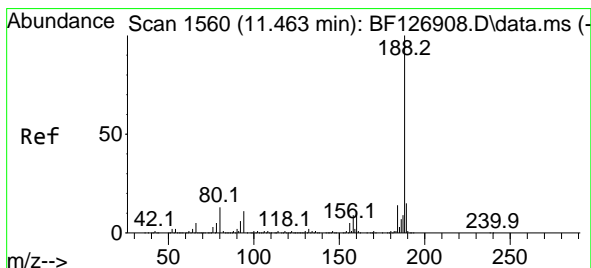
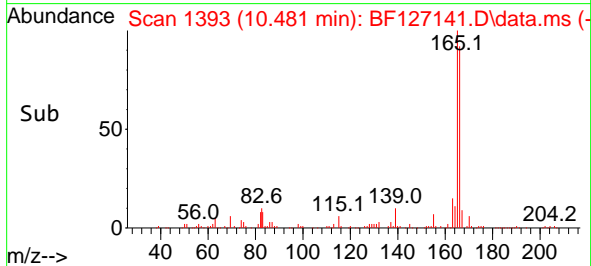
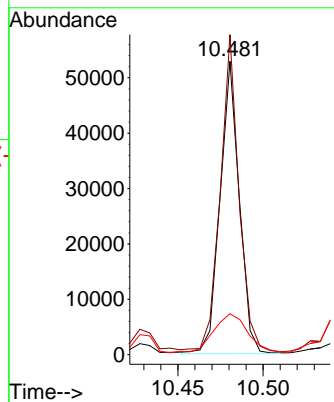
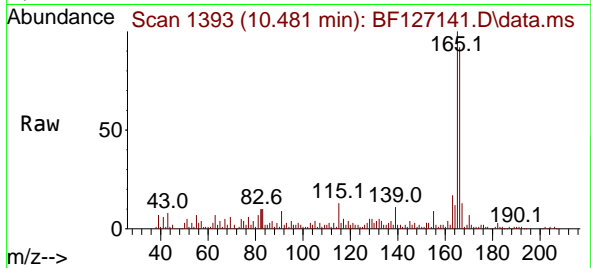




#58
 Fluorene
 Concen: 3.886 ng
 RT: 10.481 min Scan# 11
 Delta R.T. -0.006 min
 Lab File: BF127141.D
 Acq: 02 Mar 2022 12:17

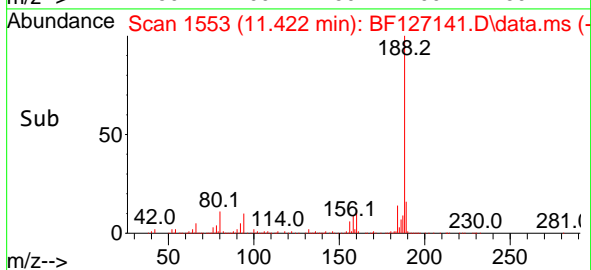
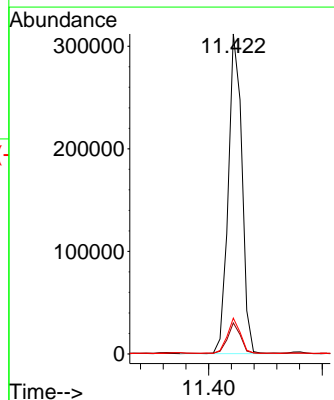
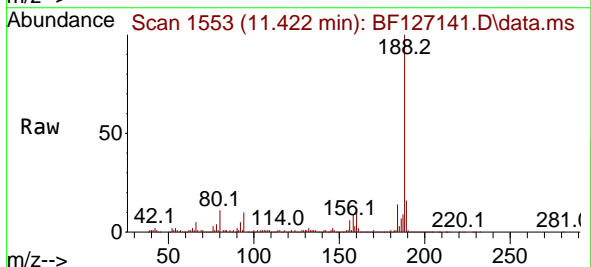
Instrument :
 BNA_F
 ClientSampleId :
 MW-39

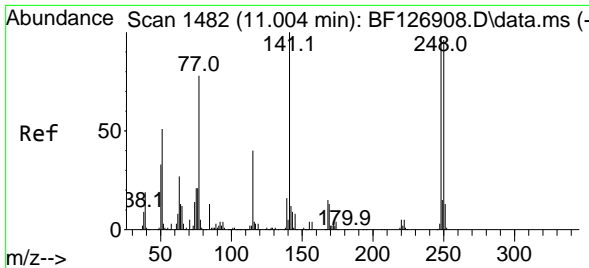
Tgt Ion:166 Resp: 41487
 Ion Ratio Lower Upper
 166 100
 165 109.0 77.7 116.5
 167 14.0 10.7 16.1



#64
 Phenanthrene-d10
 Concen: 20.000 ng
 RT: 11.422 min Scan# 1553
 Delta R.T. -0.006 min
 Lab File: BF127141.D
 Acq: 02 Mar 2022 12:17

Tgt Ion:188 Resp: 259770
 Ion Ratio Lower Upper
 188 100
 94 9.7 10.1 15.1#
 80 11.2 11.8 17.6#



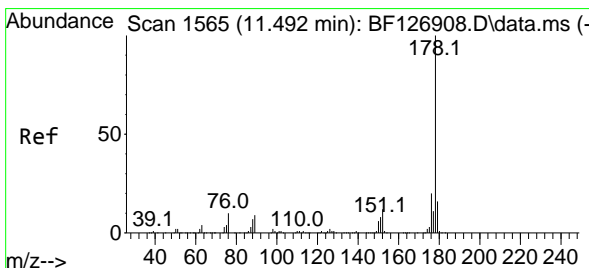
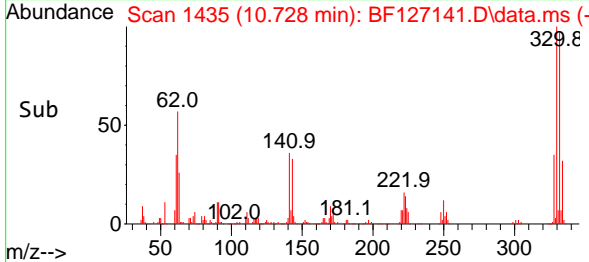
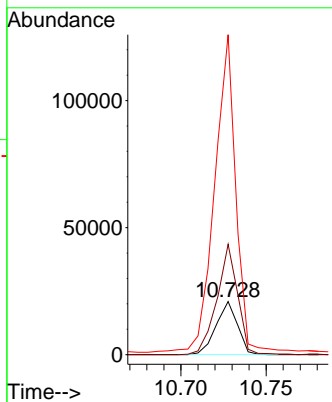
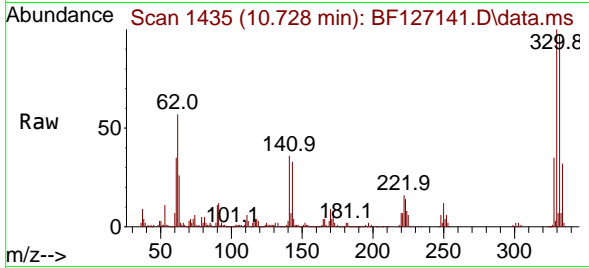


#67
 4-Bromophenyl-phenylether
 Concen: 6.303 ng
 RT: 10.728 min Scan# 14
 Delta R.T. -0.241 min
 Lab File: BF127141.D
 Acq: 02 Mar 2022 12:17

Instrument :
 BNA_F
 ClientSampleId :
 MW-39

Tgt Ion:248 Resp: 18295

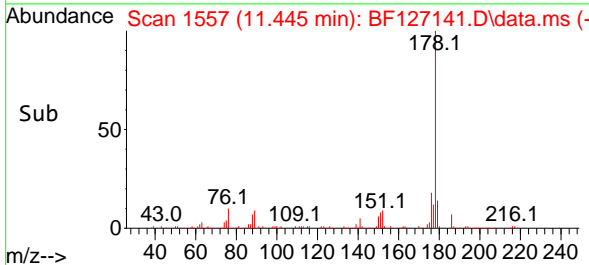
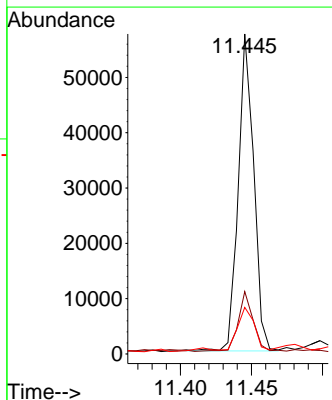
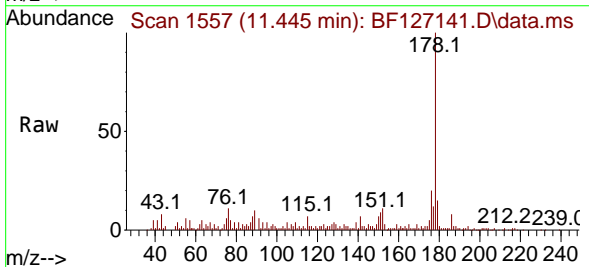
Ion	Ratio	Lower	Upper
248	100		
250	207.6	76.2	114.4#
141	601.5	66.2	99.4#

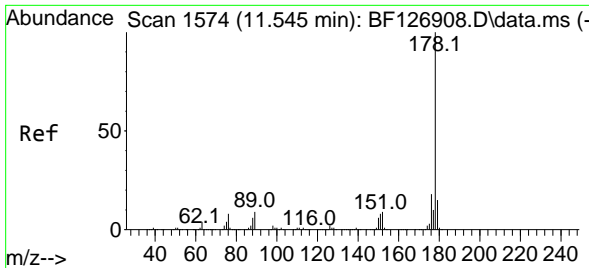


#71
 Phenanthrene
 Concen: 3.004 ng
 RT: 11.445 min Scan# 1557
 Delta R.T. -0.006 min
 Lab File: BF127141.D
 Acq: 02 Mar 2022 12:17

Tgt Ion:178 Resp: 43675

Ion	Ratio	Lower	Upper
178	100		
176	19.5	15.7	23.5
179	14.6	12.3	18.5

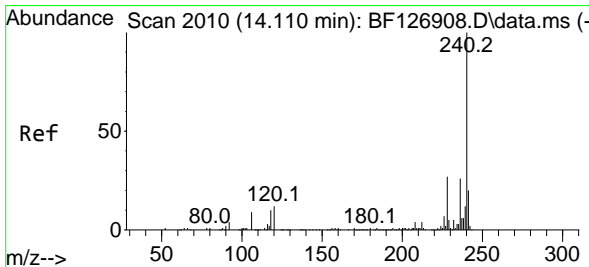
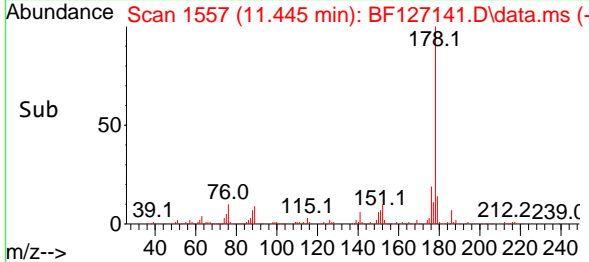
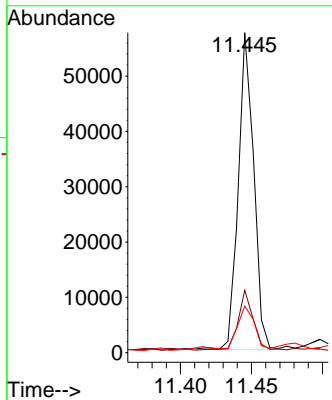
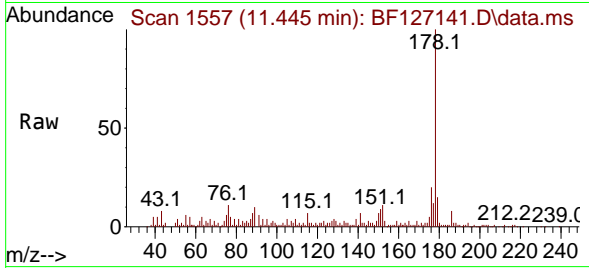




#72
 Anthracene
 Concen: 3.017 ng
 RT: 11.445 min Scan# 11
 Delta R.T. -0.059 min
 Lab File: BF127141.D
 Acq: 02 Mar 2022 12:17

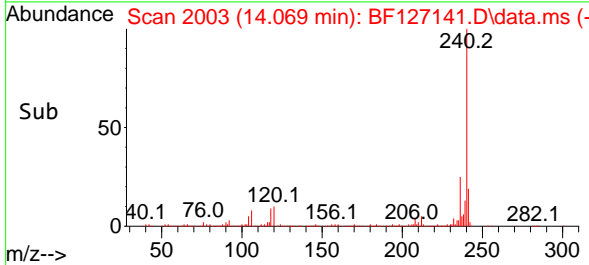
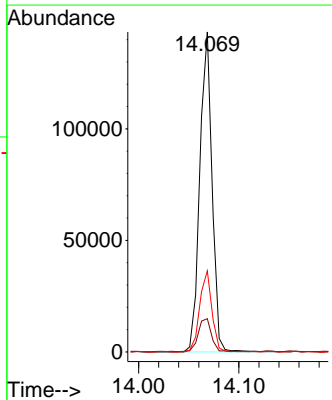
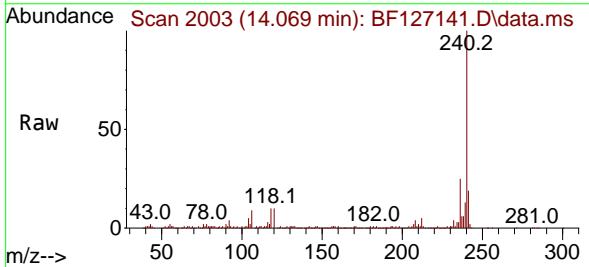
Instrument :
 BNA_F
 ClientSampleId :
 MW-39

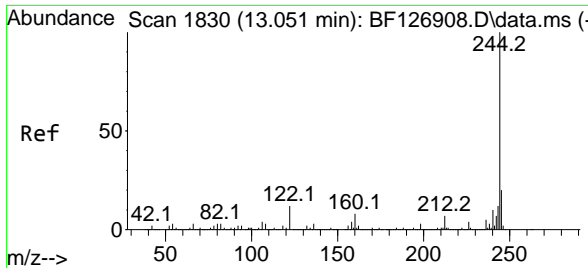
Tgt Ion:178 Resp: 43675
 Ion Ratio Lower Upper
 178 100
 176 19.5 15.0 22.6
 179 14.6 12.5 18.7



#76
 Chrysene-d12
 Concen: 20.000 ng
 RT: 14.069 min Scan# 2003
 Delta R.T. -0.006 min
 Lab File: BF127141.D
 Acq: 02 Mar 2022 12:17

Tgt Ion:240 Resp: 122630
 Ion Ratio Lower Upper
 240 100
 120 10.4 14.4 21.6#
 236 25.4 20.5 30.7



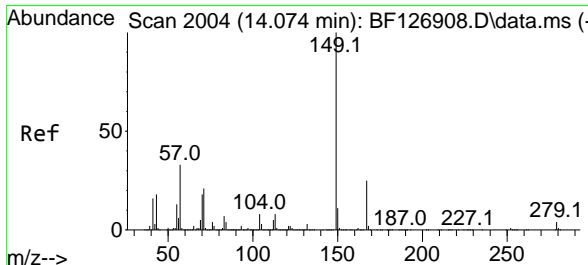
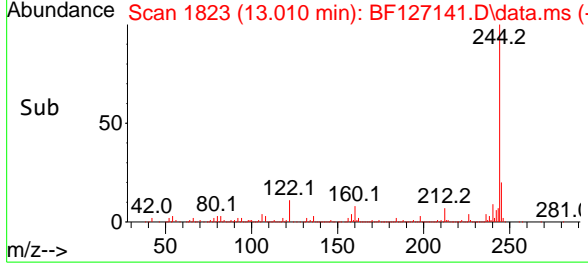
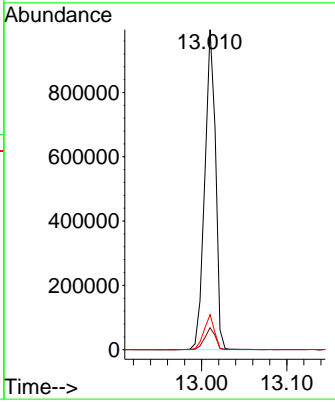
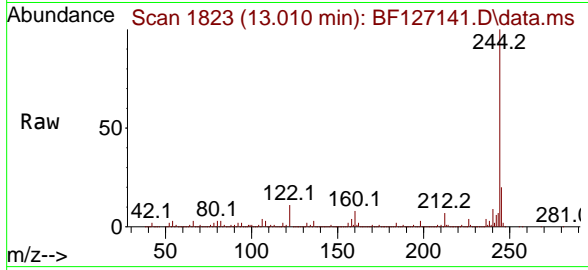


#79
 Terphenyl-d14
 Concen: 104.688 ng
 RT: 13.010 min Scan# 1823
 Delta R.T. -0.006 min
 Lab File: BF127141.D
 Acq: 02 Mar 2022 12:17

Instrument : BNA_F
 ClientSampleId : MW-39

Tgt Ion:244 Resp: 873305

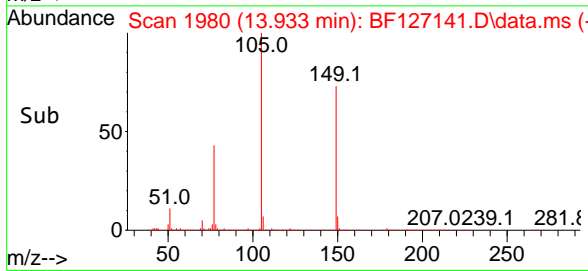
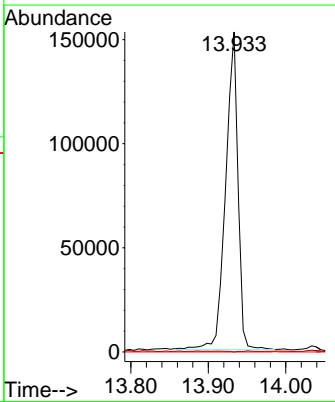
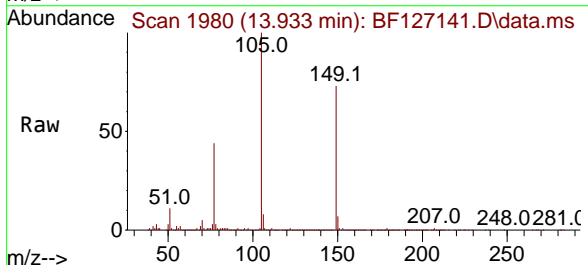
Ion	Ratio	Lower	Upper
244	100		
212	6.9	5.0	7.4
122	10.9	13.3	19.9#

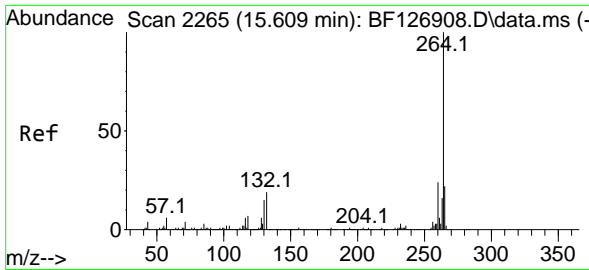


#84
 Bis(2-ethylhexyl)phthalate
 Concen: 25.616 ng
 RT: 13.933 min Scan# 1980
 Delta R.T. -0.106 min
 Lab File: BF127141.D
 Acq: 02 Mar 2022 12:17

Tgt Ion:149 Resp: 169620

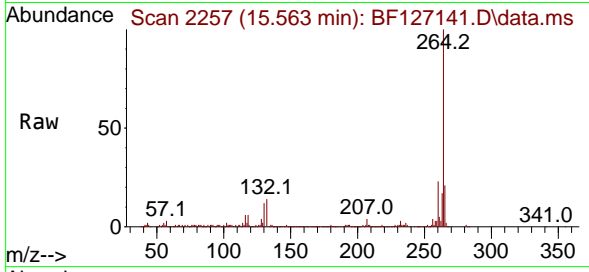
Ion	Ratio	Lower	Upper
149	100		
167	0.0	21.4	32.2#
279	0.0	2.4	3.6#





#86
 Perylene-d12
 Concen: 20.000 ng
 RT: 15.563 min Scan# 21
 Delta R.T. -0.006 min
 Lab File: BF127141.D
 Acq: 02 Mar 2022 12:17

Instrument :
 BNA_F
 ClientSampleId :
 MW-39



Tgt Ion:264 Resp: 144722

Ion	Ratio	Lower	Upper
264	100		
260	23.3	19.2	28.8
265	21.3	17.4	26.2

