

Data Path : Z:\svoasrv\HPCHEM1\BNA\_F\Data\BF030422\  
 Data File : BF127212.D  
 Acq On : 04 Mar 2022 20:35  
 Operator : CG\JU  
 Sample : N1785-01 5X  
 Misc :  
 ALS Vial : 19 Sample Multiplier: 1

Instrument :  
 BNA\_F  
 ClientSampleId :  
 TR-4-030322

Quant Time: Mar 05 02:22:11 2022  
 Quant Method : Z:\svoasrv\HPCHEM1\BNA\_F\Methods\8270-BF021622.M  
 Quant Title : ASP BNA STANDARDS FOR 5 POINT CALIBRATION  
 QLast Update : Sat Mar 05 02:16:58 2022  
 Response via : Initial Calibration

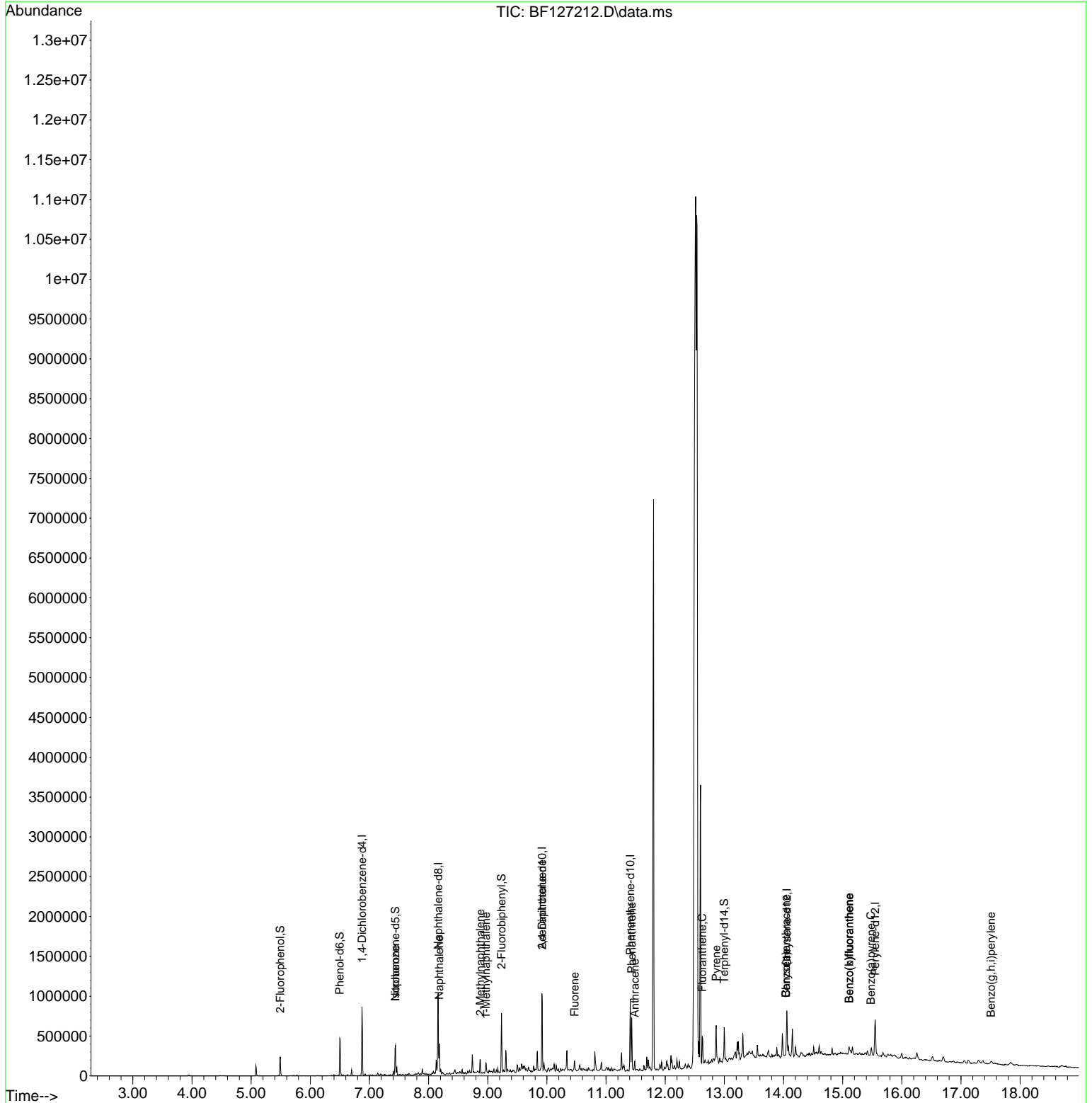
Compound	R.T.	QIon	Response	Conc	Units	Dev(Min)
-----						
Internal Standards						
1) 1,4-Dichlorobenzene-d4	6.875	152	108963	20.000	ng	0.00
21) Naphthalene-d8	8.163	136	435561	20.000	ng	# 0.00
39) Acenaphthene-d10	9.916	164	186979	20.000	ng	0.00
64) Phenanthrene-d10	11.410	188	281199	20.000	ng	# 0.00
76) Chrysene-d12	14.057	240	162068	20.000	ng	# 0.00
86) Perylene-d12	15.551	264	167606	20.000	ng	0.00
System Monitoring Compounds						
5) 2-Fluorophenol	5.493	112	59227	8.401	ng	0.00
7) Phenol-d6	6.498	99	151213	15.895	ng	-0.02
23) Nitrobenzene-d5	7.440	82	109235	11.320	ng	-0.01
42) 2,4,6-Tribromophenol	10.710	330	2316	1.076	ng	0.00
45) 2-Fluorobiphenyl	9.234	172	179653	14.145	ng	0.00
79) Terphenyl-d14	12.998	244	125396	11.374	ng	0.00
Target Compounds						
						Qvalue
25) Isophorone	7.440	82	109096	6.832	ng	# 69
31) Naphthalene	8.181	128	130655	5.746	ng	99
37) 2-Methylnaphthalene	8.875	142	44347	3.006	ng	98
38) 1-Methylnaphthalene	8.969	142	29104	2.060	ng	100
57) 2,4-Dinitrotoluene	9.916	165	26150	7.113	ng	# 16
58) Fluorene	10.469	166	30580	2.460	ng	98
71) Phenanthrene	11.433	178	207610	13.191	ng	99
72) Anthracene	11.486	178	44638	2.849	ng	97
75) Fluoranthene	12.627	202	129948	8.695	ng	92
78) Pyrene	12.863	202	123623	8.780	ng	99
81) Benzo(a)anthracene	14.045	228	50370	4.610	ng	94
83) Chrysene	14.045	228	50370	4.902	ng	98
88) Benzo(b)fluoranthene	15.110	252	67968	6.038	ng	# 93
89) Benzo(k)fluoranthene	15.110	252	67968	6.260	ng	94
90) Benzo(a)pyrene	15.480	252	40757	4.635	ng	95
92) Benzo(g,h,i)perylene	17.509	276	25095	2.800	ng	# 92

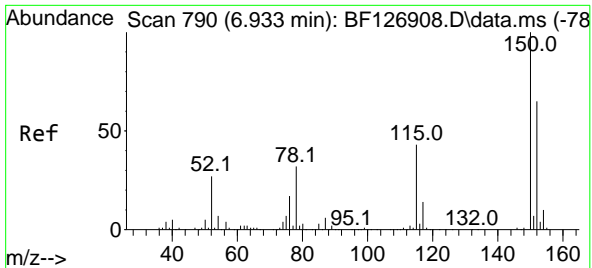
(#) = qualifier out of range (m) = manual integration (+) = signals summed

Data Path : Z:\svoasrv\HPCHEM1\BNA\_F\Data\BF030422\  
 Data File : BF127212.D  
 Acq On : 04 Mar 2022 20:35  
 Operator : CG\JU  
 Sample : N1785-01 5X  
 Misc :  
 ALS Vial : 19 Sample Multiplier: 1

Instrument :  
 BNA\_F  
 ClientSampleId :  
 TR-4-030322

Quant Time: Mar 05 02:22:11 2022  
 Quant Method : Z:\svoasrv\HPCHEM1\BNA\_F\Methods\8270-BF021622.M  
 Quant Title : ASP BNA STANDARDS FOR 5 POINT CALIBRATION  
 QLast Update : Sat Mar 05 02:16:58 2022  
 Response via : Initial Calibration

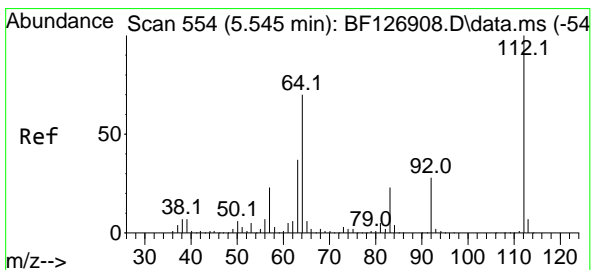
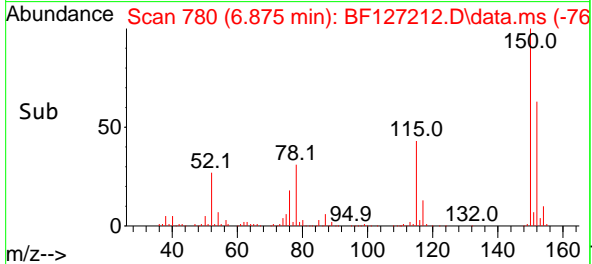
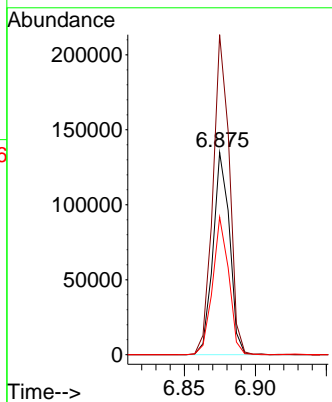
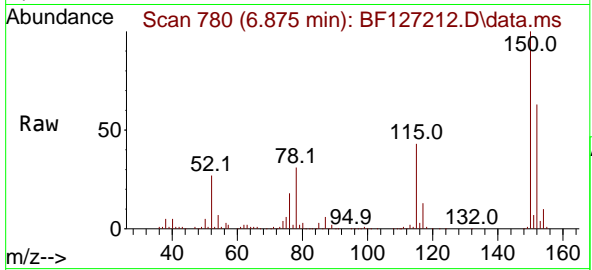




#1  
 1,4-Dichlorobenzene-d4  
 Concen: 20.000 ng  
 RT: 6.875 min Scan# 71  
 Delta R.T. -0.006 min  
 Lab File: BF127212.D  
 Acq: 04 Mar 2022 20:35

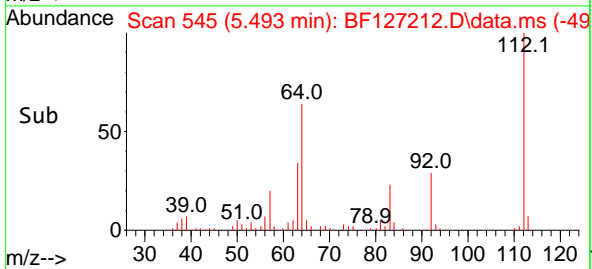
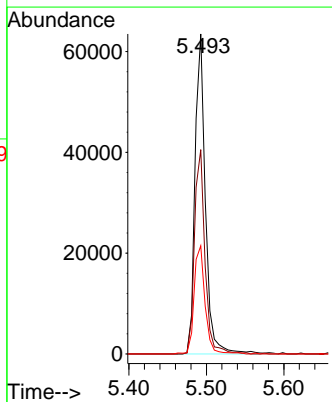
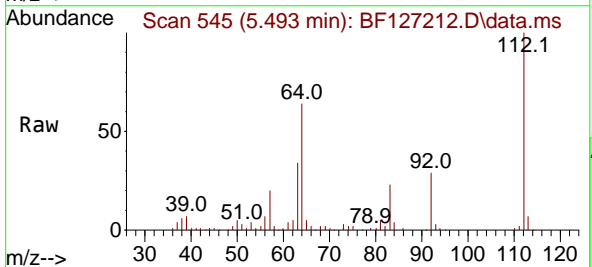
Instrument :  
 BNA\_F  
 ClientSampleId :  
 TR-4-030322

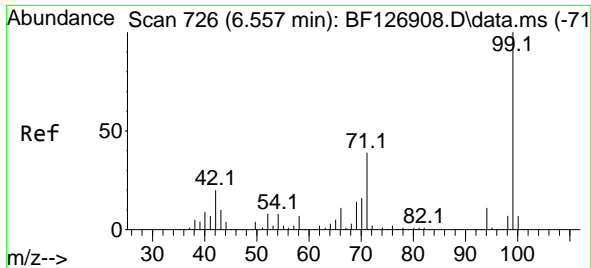
Tgt Ion:152 Resp: 108963  
 Ion Ratio Lower Upper  
 152 100  
 150 158.2 128.1 192.1  
 115 68.0 56.7 85.1



#5  
 2-Fluorophenol  
 Concen: 8.401 ng  
 RT: 5.493 min Scan# 545  
 Delta R.T. -0.006 min  
 Lab File: BF127212.D  
 Acq: 04 Mar 2022 20:35

Tgt Ion:112 Resp: 59227  
 Ion Ratio Lower Upper  
 112 100  
 64 63.9 49.5 74.3  
 63 33.8 23.9 35.9

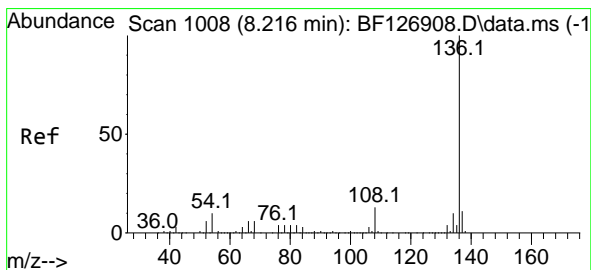
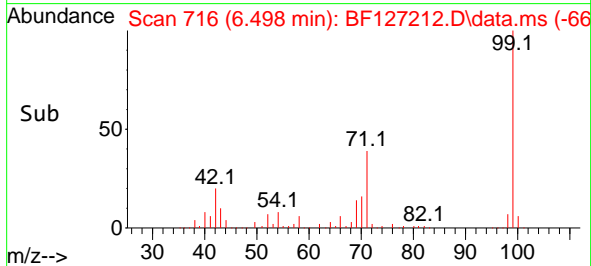
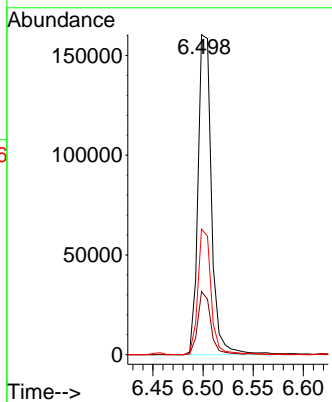
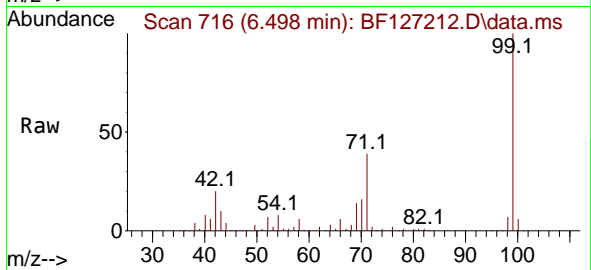




#7  
 Phenol-d6  
 Concen: 15.895 ng  
 RT: 6.498 min Scan# 71  
 Delta R.T. -0.018 min  
 Lab File: BF127212.D  
 Acq: 04 Mar 2022 20:35

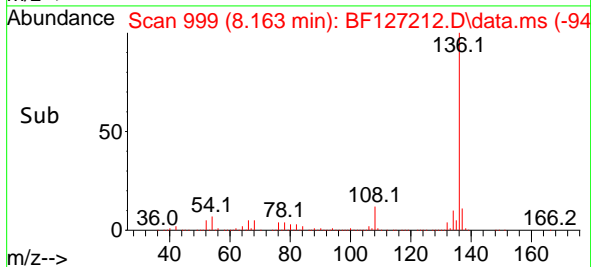
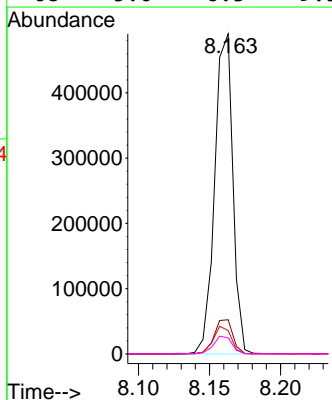
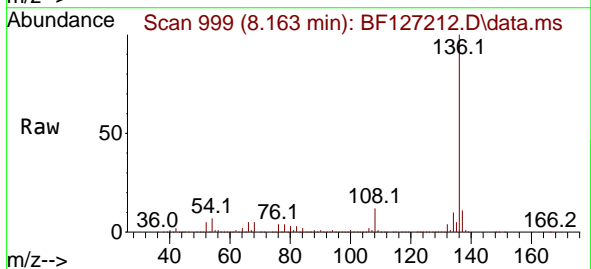
Instrument :  
 BNA\_F  
 ClientSampleId :  
 TR-4-030322

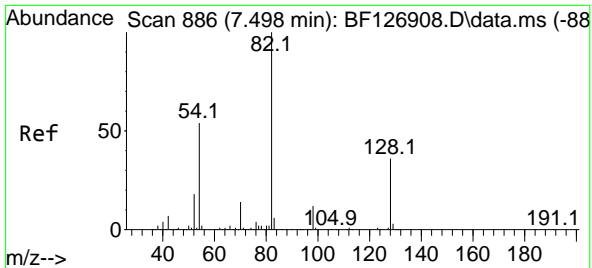
Tgt Ion: 99 Resp: 151213  
 Ion Ratio Lower Upper  
 99 100  
 42 19.7 14.2 21.4  
 71 39.2 24.3 36.5#



#21  
 Naphthalene-d8  
 Concen: 20.000 ng  
 RT: 8.163 min Scan# 999  
 Delta R.T. -0.000 min  
 Lab File: BF127212.D  
 Acq: 04 Mar 2022 20:35

Tgt Ion:136 Resp: 435561  
 Ion Ratio Lower Upper  
 136 100  
 137 10.7 8.6 13.0  
 54 7.3 7.8 11.6#  
 68 5.0 6.3 9.5#



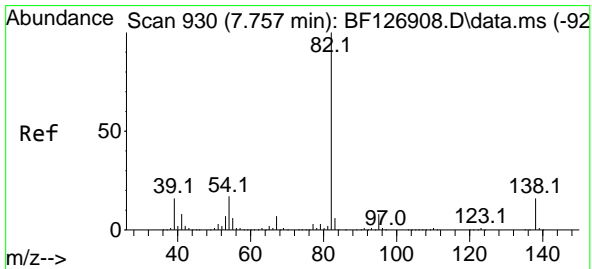
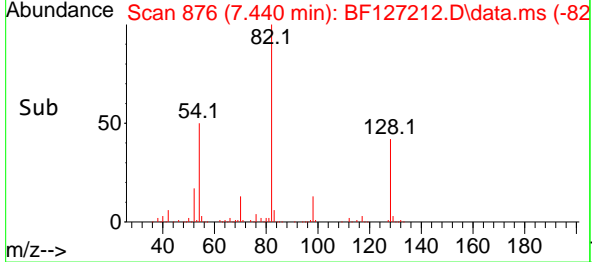
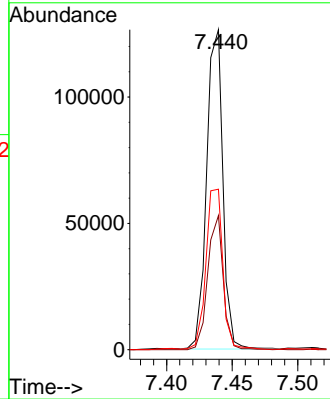
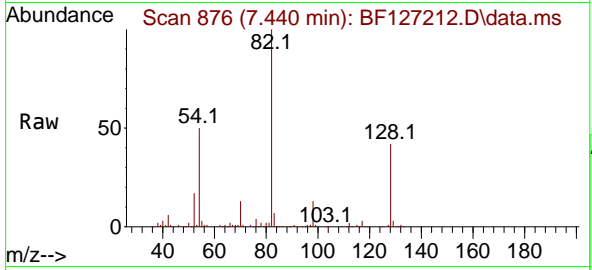


#23  
 Nitrobenzene-d5  
 Concen: 11.320 ng  
 RT: 7.440 min Scan# 876  
 Delta R.T. -0.012 min  
 Lab File: BF127212.D  
 Acq: 04 Mar 2022 20:35

Instrument :  
 BNA\_F  
 ClientSampleId :  
 TR-4-030322

Tgt Ion: 82 Resp: 109235

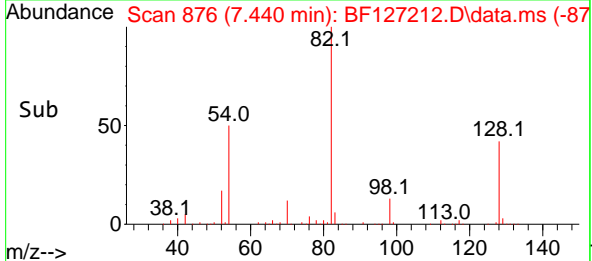
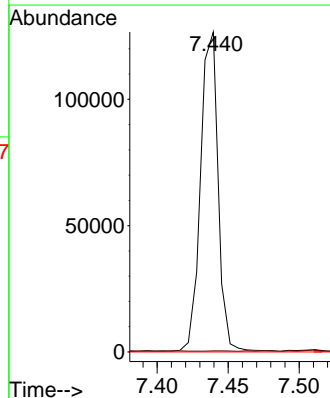
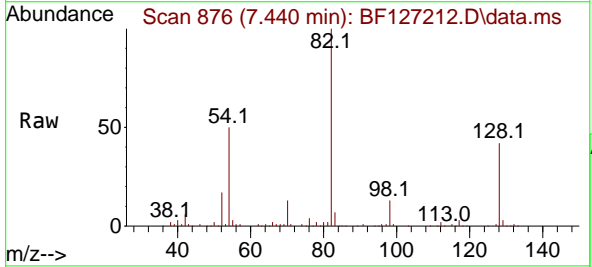
Ion	Ratio	Lower	Upper
82	100		
128	41.9	32.7	49.1
54	50.2	41.7	62.5

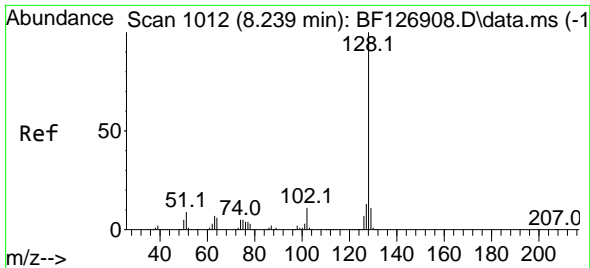


#25  
 Isophorone  
 Concen: 6.832 ng  
 RT: 7.440 min Scan# 876  
 Delta R.T. -0.265 min  
 Lab File: BF127212.D  
 Acq: 04 Mar 2022 20:35

Tgt Ion: 82 Resp: 109096

Ion	Ratio	Lower	Upper
82	100		
95	0.4	5.0	7.4#
138	0.0	12.3	18.5#

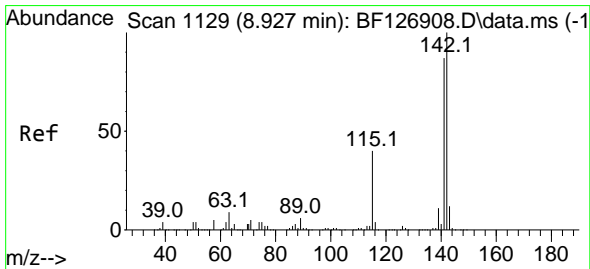
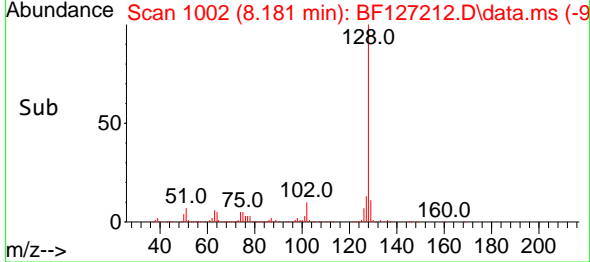
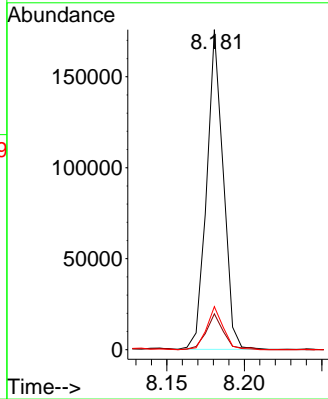
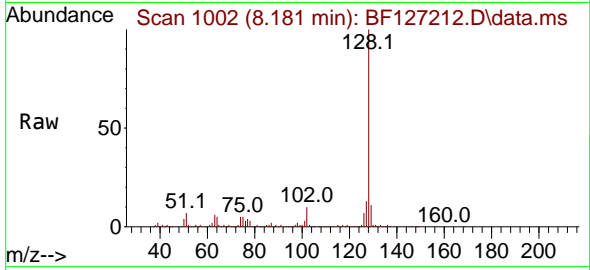




#31  
 Naphthalene  
 Concen: 5.746 ng  
 RT: 8.181 min Scan# 110  
 Delta R.T. -0.006 min  
 Lab File: BF127212.D  
 Acq: 04 Mar 2022 20:35

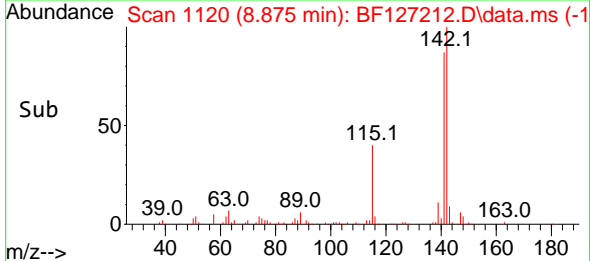
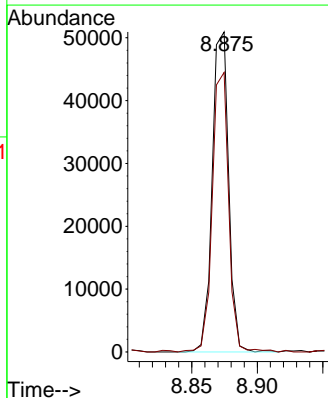
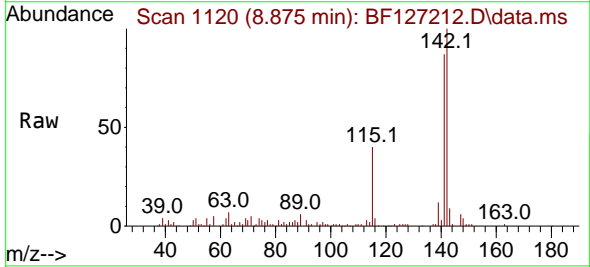
Instrument :  
 BNA\_F  
 ClientSampleId :  
 TR-4-030322

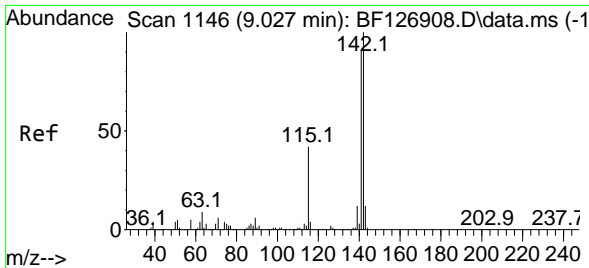
Tgt Ion:128 Resp: 130655  
 Ion Ratio Lower Upper  
 128 100  
 129 11.2 8.6 13.0  
 127 13.4 10.3 15.5



#37  
 2-Methylnaphthalene  
 Concen: 3.006 ng  
 RT: 8.875 min Scan# 1120  
 Delta R.T. -0.000 min  
 Lab File: BF127212.D  
 Acq: 04 Mar 2022 20:35

Tgt Ion:142 Resp: 44347  
 Ion Ratio Lower Upper  
 142 100  
 141 87.3 68.6 102.8

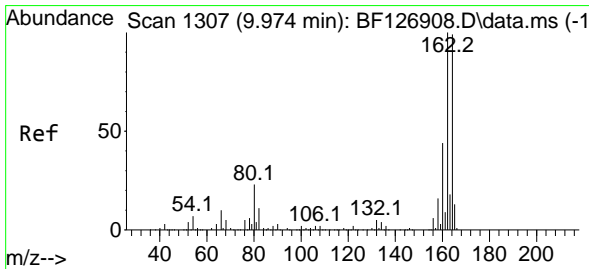
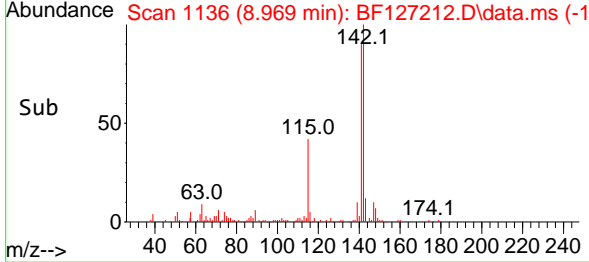
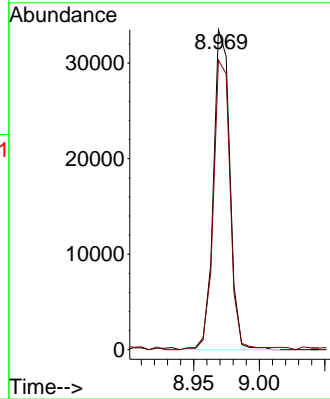
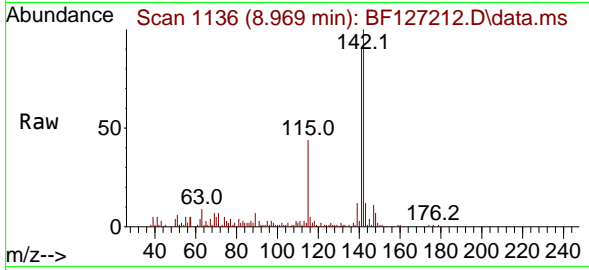




#38  
 1-Methylnaphthalene  
 Concen: 2.060 ng  
 RT: 8.969 min Scan# 1146  
 Delta R.T. -0.006 min  
 Lab File: BF127212.D  
 Acq: 04 Mar 2022 20:35

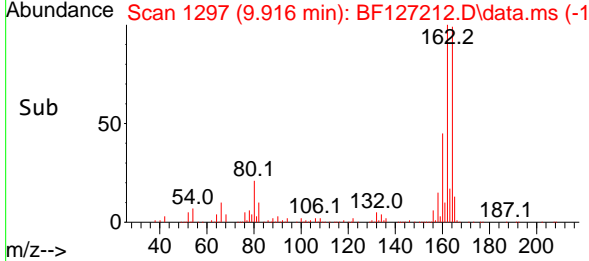
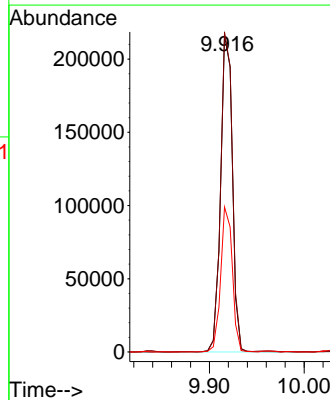
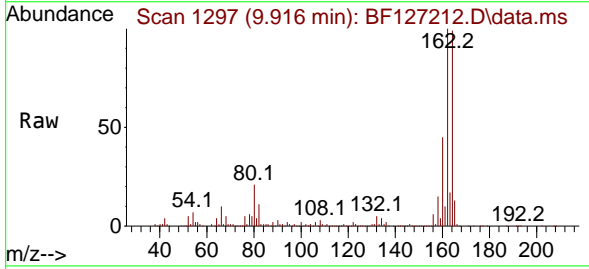
Instrument : BNA\_F  
 ClientSampleId : TR-4-030322

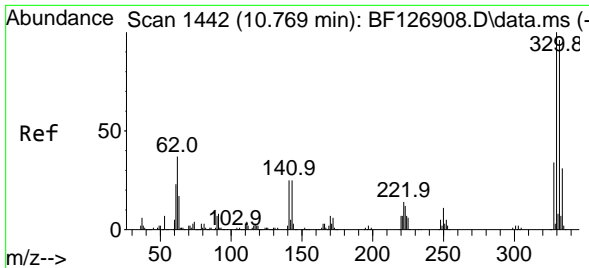
Tgt Ion:142 Resp: 29104  
 Ion Ratio Lower Upper  
 142 100  
 141 90.5 72.1 108.1



#39  
 Acenaphthene-d10  
 Concen: 20.000 ng  
 RT: 9.916 min Scan# 1297  
 Delta R.T. -0.006 min  
 Lab File: BF127212.D  
 Acq: 04 Mar 2022 20:35

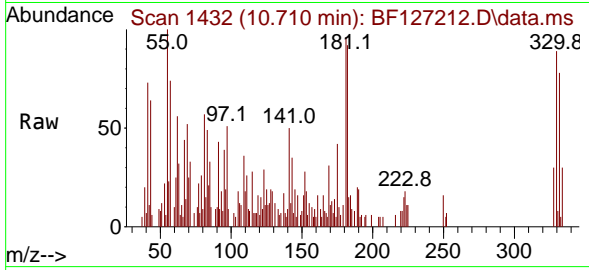
Tgt Ion:164 Resp: 186979  
 Ion Ratio Lower Upper  
 164 100  
 162 101.0 81.4 122.0  
 160 45.8 36.6 54.8



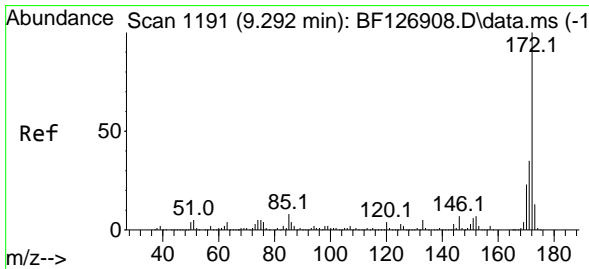
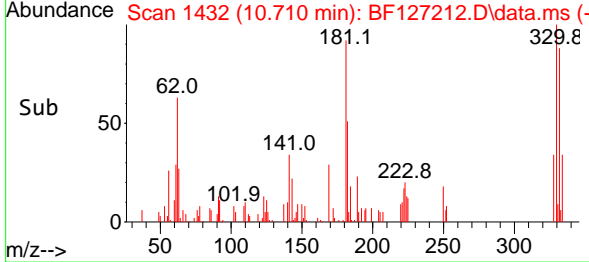
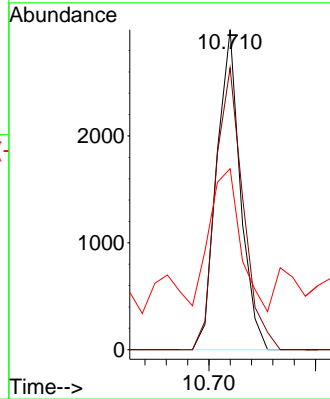


#42  
 2,4,6-Tribromophenol  
 Concen: 1.076 ng  
 RT: 10.710 min Scan# 1442  
 Delta R.T. -0.006 min  
 Lab File: BF127212.D  
 Acq: 04 Mar 2022 20:35

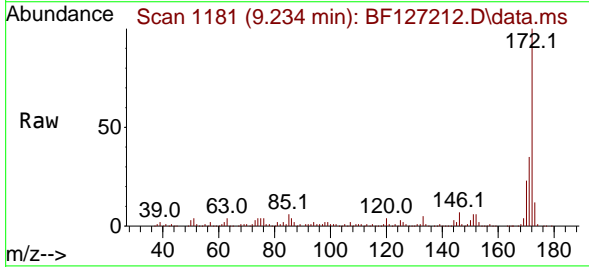
Instrument : BNA\_F  
 ClientSampleId : TR-4-030322



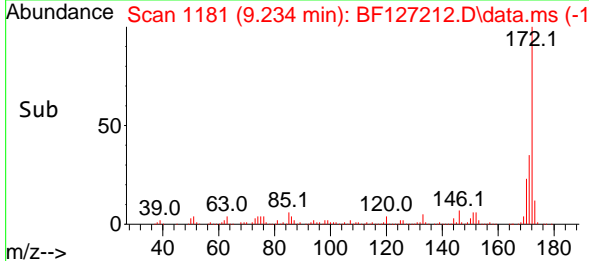
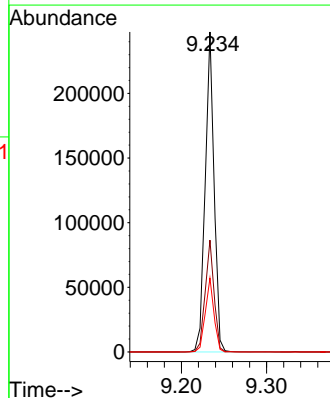
Tgt Ion:330 Resp: 2316  
 Ion Ratio Lower Upper  
 330 100  
 332 102.6 76.0 114.0  
 141 57.8 30.1 45.1#



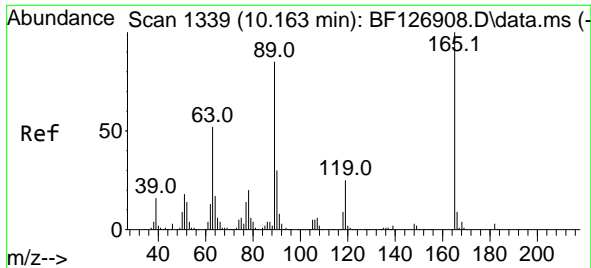
#45  
 2-Fluorobiphenyl  
 Concen: 14.145 ng  
 RT: 9.234 min Scan# 1181  
 Delta R.T. -0.006 min  
 Lab File: BF127212.D  
 Acq: 04 Mar 2022 20:35



Tgt Ion:172 Resp: 179653  
 Ion Ratio Lower Upper  
 172 100  
 171 34.9 28.3 42.5  
 170 23.1 19.0 28.6

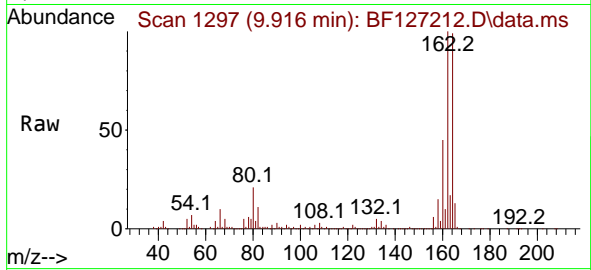




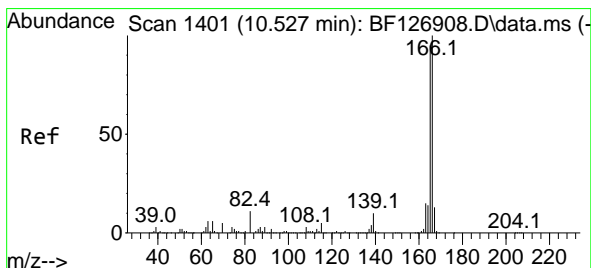
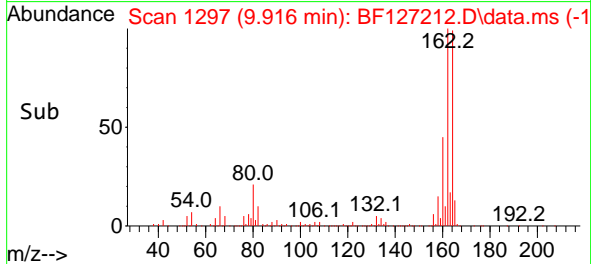
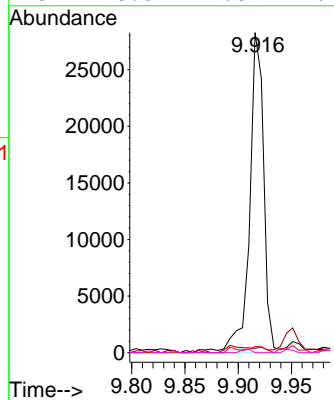


#57  
 2,4-Dinitrotoluene  
 Concen: 7.113 ng  
 RT: 9.916 min Scan# 11  
 Delta R.T. -0.200 min  
 Lab File: BF127212.D  
 Acq: 04 Mar 2022 20:35

Instrument :  
 BNA\_F  
 ClientSampleId :  
 TR-4-030322

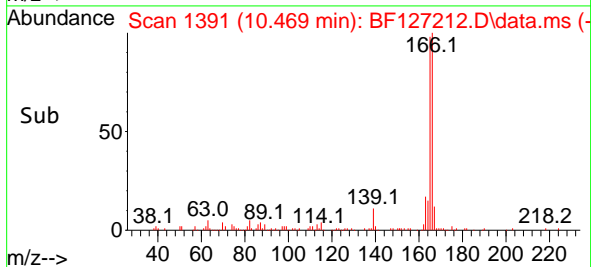
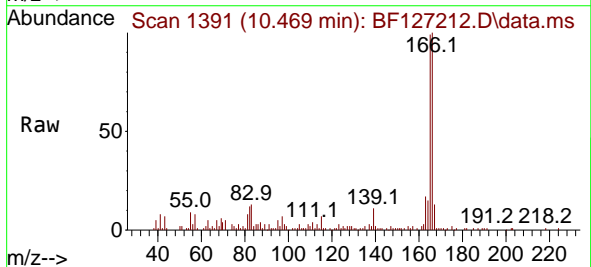
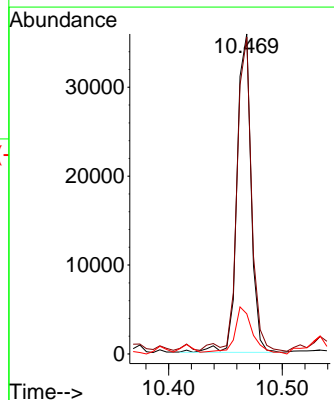


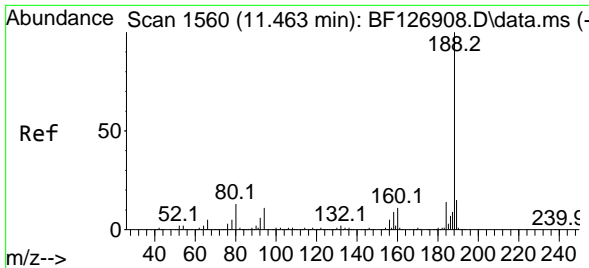
Tgt Ion:165 Resp: 26150  
 Ion Ratio Lower Upper  
 165 100  
 63 1.4 43.0 64.6#  
 89 1.9 71.0 106.4#  
 182 0.0 1.6 2.4#



#58  
 Fluorene  
 Concen: 2.460 ng  
 RT: 10.469 min Scan# 1391  
 Delta R.T. -0.006 min  
 Lab File: BF127212.D  
 Acq: 04 Mar 2022 20:35

Tgt Ion:166 Resp: 30580  
 Ion Ratio Lower Upper  
 166 100  
 165 99.0 77.7 116.5  
 167 12.6 10.7 16.1

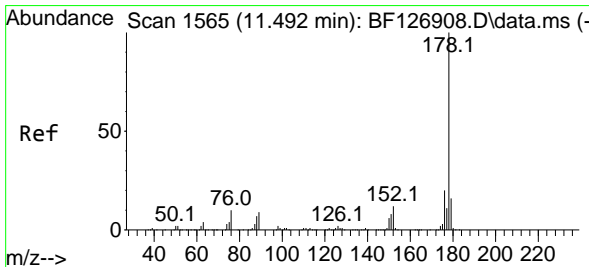
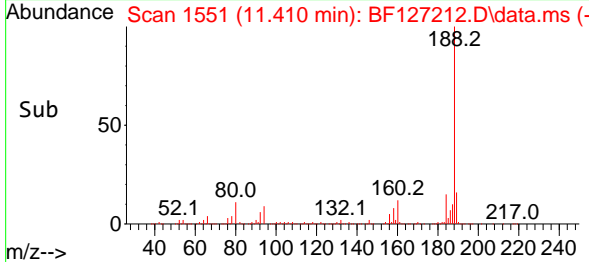
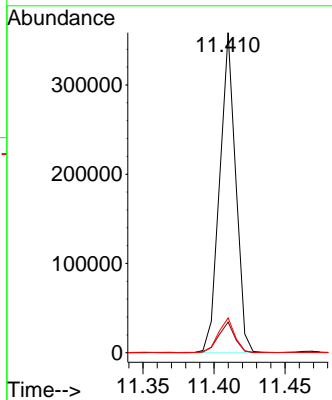
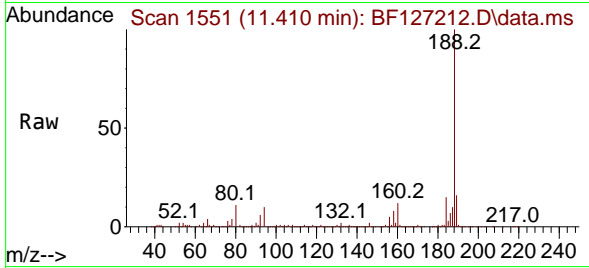




#64  
 Phenanthrene-d10  
 Concen: 20.000 ng  
 RT: 11.410 min Scan# 11  
 Delta R.T. -0.006 min  
 Lab File: BF127212.D  
 Acq: 04 Mar 2022 20:35

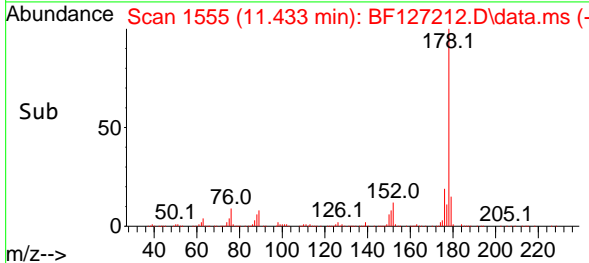
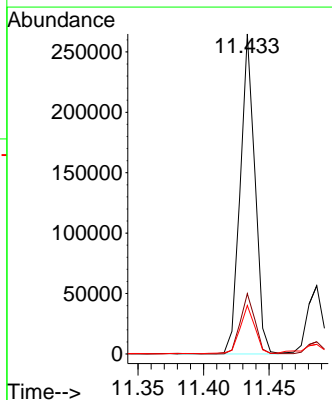
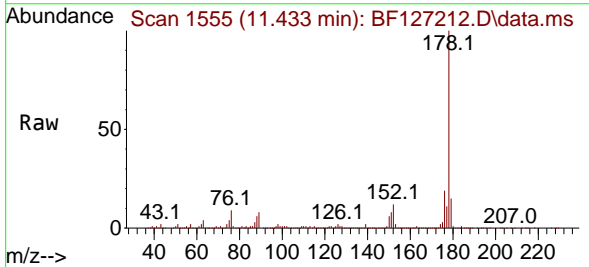
Instrument :  
 BNA\_F  
 ClientSampleId :  
 TR-4-030322

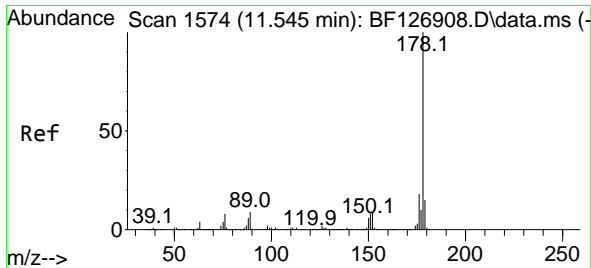
Tgt Ion:188 Resp: 281199  
 Ion Ratio Lower Upper  
 188 100  
 94 9.6 10.1 15.1#  
 80 10.8 11.8 17.6#



#71  
 Phenanthrene  
 Concen: 13.191 ng  
 RT: 11.433 min Scan# 1555  
 Delta R.T. -0.006 min  
 Lab File: BF127212.D  
 Acq: 04 Mar 2022 20:35

Tgt Ion:178 Resp: 207610  
 Ion Ratio Lower Upper  
 178 100  
 176 18.8 15.7 23.5  
 179 15.2 12.3 18.5

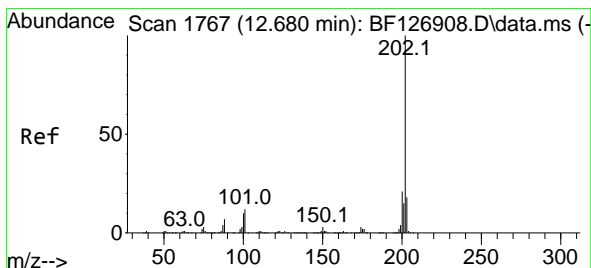
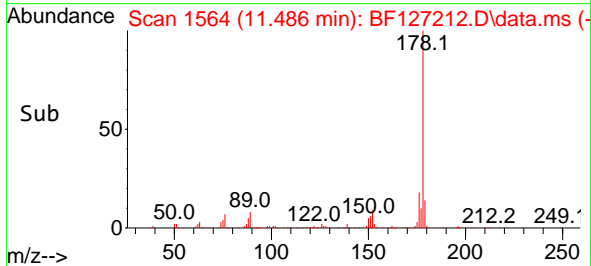
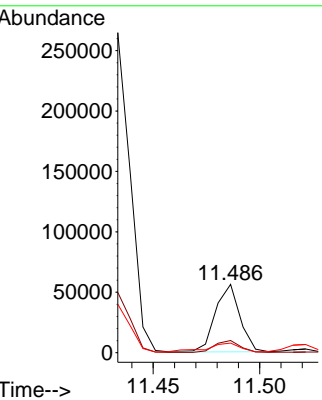
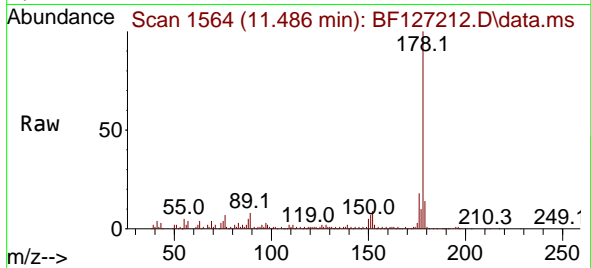




#72  
 Anthracene  
 Concen: 2.849 ng  
 RT: 11.486 min Scan# 11  
 Delta R.T. -0.006 min  
 Lab File: BF127212.D  
 Acq: 04 Mar 2022 20:35

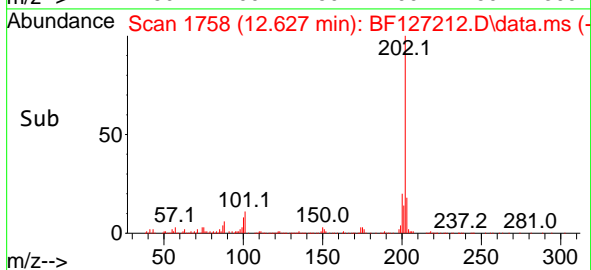
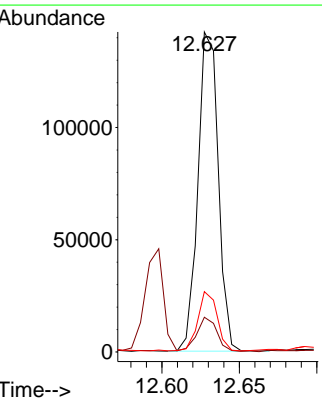
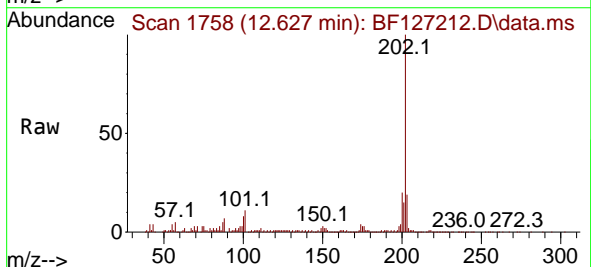
Instrument : BNA\_F  
 ClientSampleId : TR-4-030322

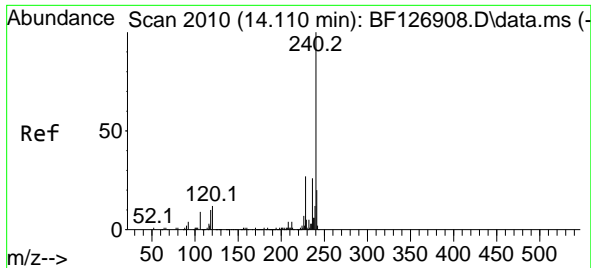
Tgt Ion	Resp	Lower	Upper
178	44638	100	100
176	17.8	15.0	22.6
179	14.1	12.5	18.7



#75  
 Fluoranthene  
 Concen: 8.695 ng  
 RT: 12.627 min Scan# 1758  
 Delta R.T. -0.006 min  
 Lab File: BF127212.D  
 Acq: 04 Mar 2022 20:35

Tgt Ion	Resp	Lower	Upper
202	129948	100	100
101	10.9	0.0	35.7
203	18.9	0.0	37.1

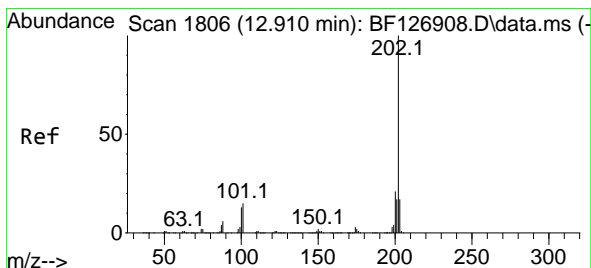
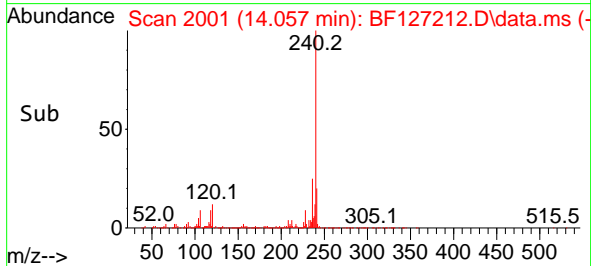
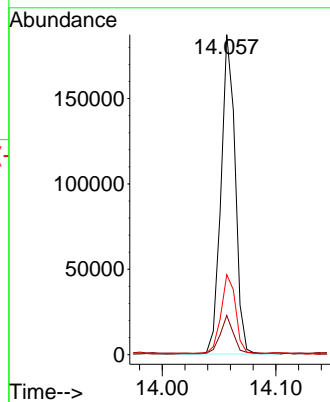
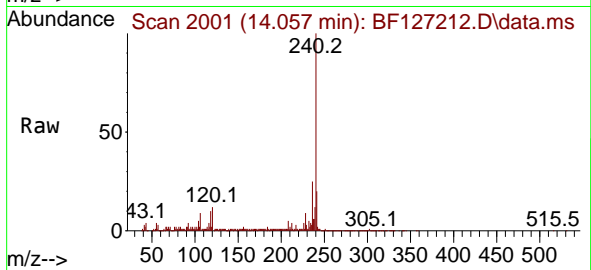




#76  
 Chrysene-d12  
 Concen: 20.000 ng  
 RT: 14.057 min Scan# 2010  
 Delta R.T. -0.006 min  
 Lab File: BF127212.D  
 Acq: 04 Mar 2022 20:35

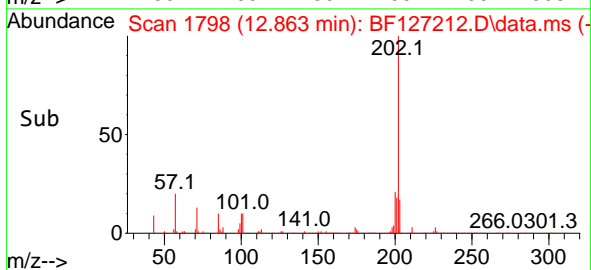
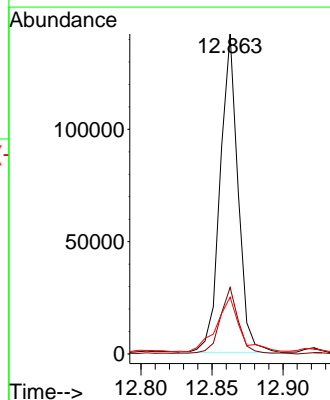
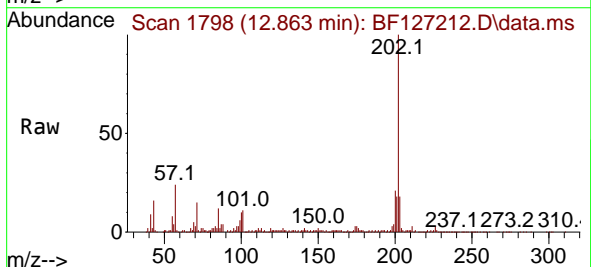
Instrument :  
 BNA\_F  
 ClientSampleId :  
 TR-4-030322

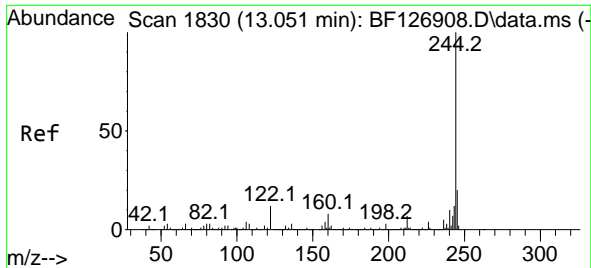
Tgt Ion:240 Resp: 162068  
 Ion Ratio Lower Upper  
 240 100  
 120 12.2 14.4 21.6#  
 236 25.0 20.5 30.7



#78  
 Pyrene  
 Concen: 8.780 ng  
 RT: 12.863 min Scan# 1798  
 Delta R.T. 0.000 min  
 Lab File: BF127212.D  
 Acq: 04 Mar 2022 20:35

Tgt Ion:202 Resp: 123623  
 Ion Ratio Lower Upper  
 202 100  
 200 20.8 16.6 24.8  
 203 17.8 13.8 20.8

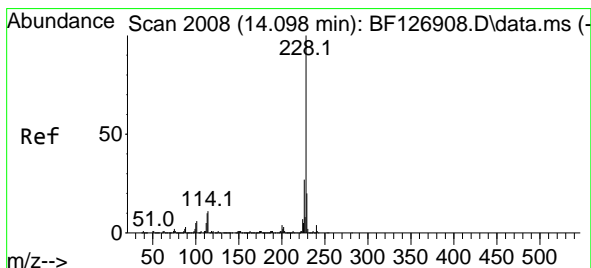
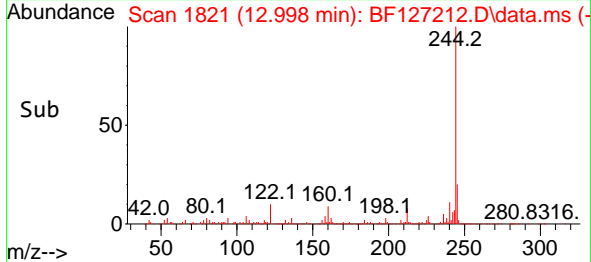
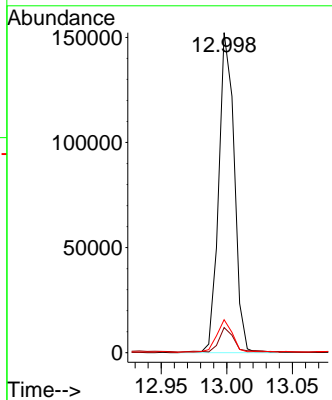
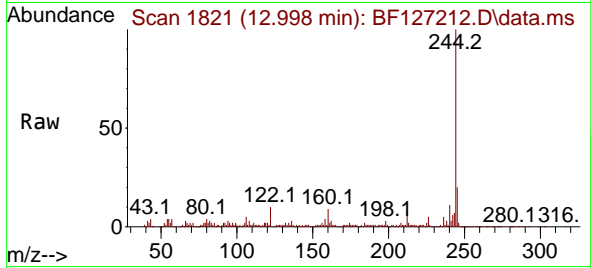




#79  
 Terphenyl-d14  
 Concen: 11.374 ng  
 RT: 12.998 min Scan# 1830  
 Delta R.T. 0.000 min  
 Lab File: BF127212.D  
 Acq: 04 Mar 2022 20:35

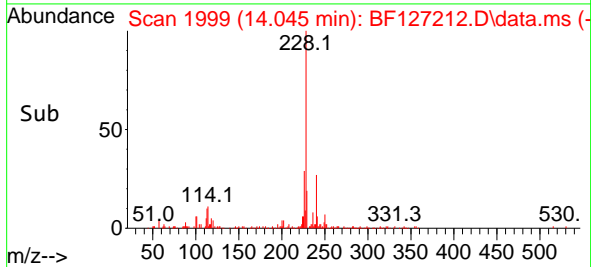
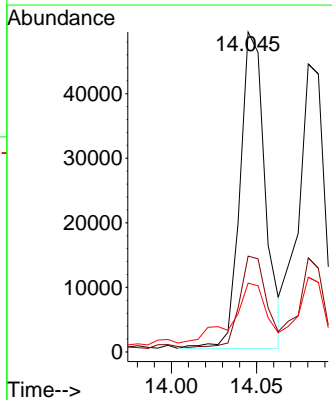
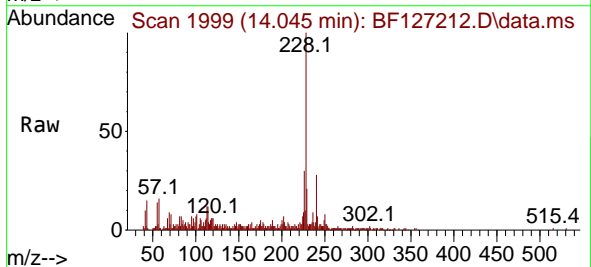
Instrument : BNA\_F  
 ClientSampleId : TR-4-030322

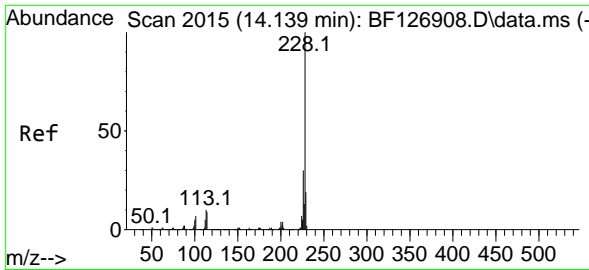
Tgt Ion	Resp	Lower	Upper
244	125396		
212	7.9	5.0	7.4#
122	10.3	13.3	19.9#



#81  
 Benzo(a)anthracene  
 Concen: 4.610 ng  
 RT: 14.045 min Scan# 1999  
 Delta R.T. -0.006 min  
 Lab File: BF127212.D  
 Acq: 04 Mar 2022 20:35

Tgt Ion	Resp	Lower	Upper
228	50370		
226	30.0	21.4	32.0
229	21.5	15.4	23.2



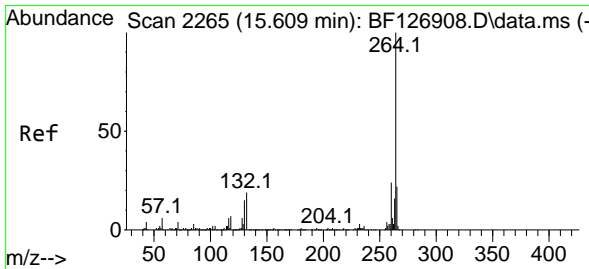
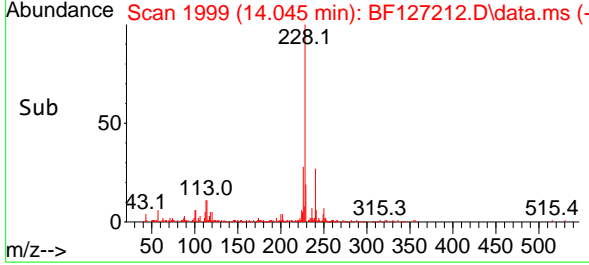
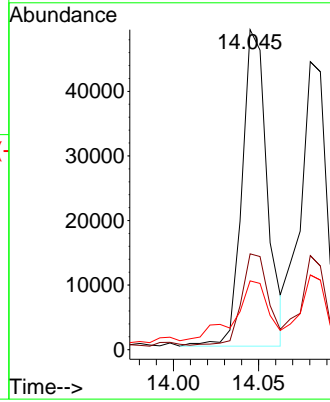
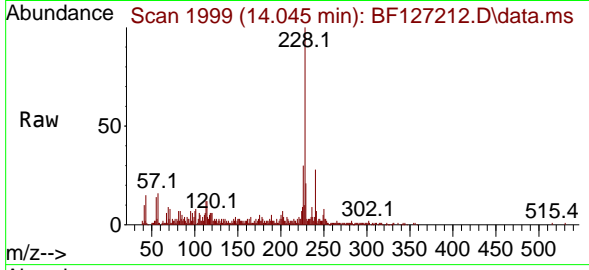


#83  
 Chrysene  
 Concen: 4.902 ng  
 RT: 14.045 min Scan# 1999  
 Delta R.T. -0.041 min  
 Lab File: BF127212.D  
 Acq: 04 Mar 2022 20:35

Instrument : BNA\_F  
 ClientSampleId : TR-4-030322

Tgt Ion:228 Resp: 50370

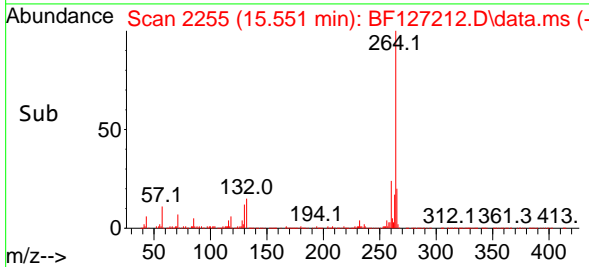
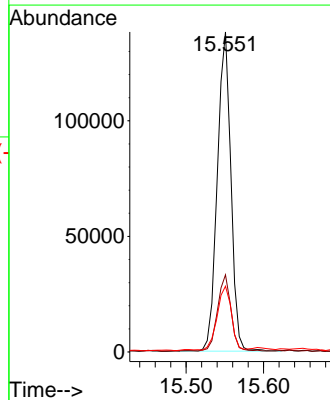
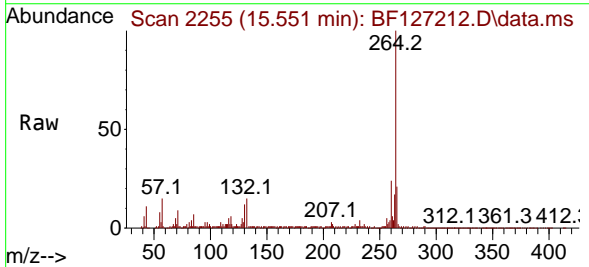
Ion	Ratio	Lower	Upper
228	100		
226	30.0	23.7	35.5
229	21.5	15.5	23.3

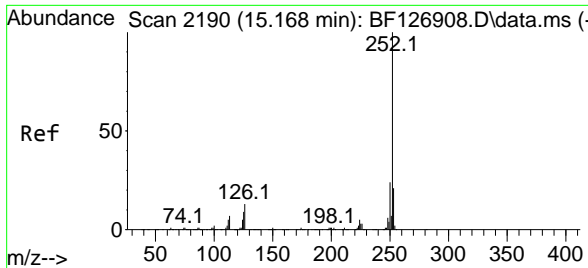


#86  
 Perylene-d12  
 Concen: 20.000 ng  
 RT: 15.551 min Scan# 2255  
 Delta R.T. 0.006 min  
 Lab File: BF127212.D  
 Acq: 04 Mar 2022 20:35

Tgt Ion:264 Resp: 167606

Ion	Ratio	Lower	Upper
264	100		
260	24.1	19.2	28.8
265	20.5	17.4	26.2



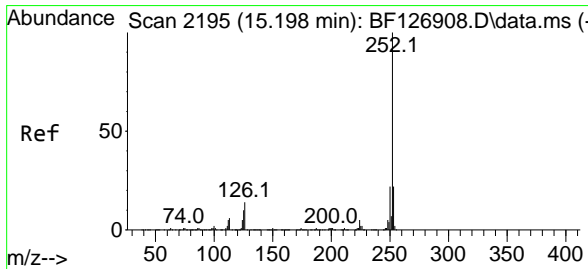
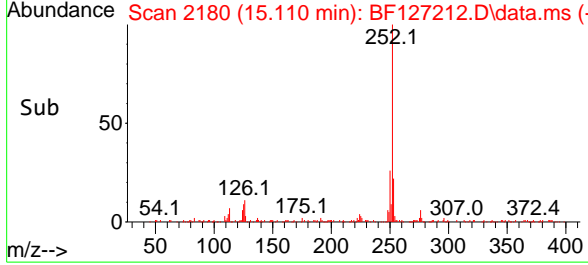
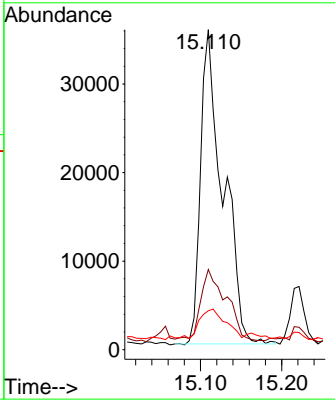
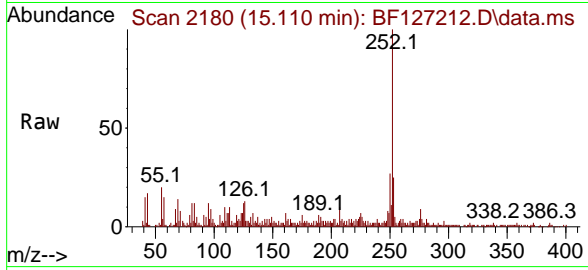


#88  
 Benzo(b)fluoranthene  
 Concen: 6.038 ng  
 RT: 15.110 min Scan# 2180  
 Delta R.T. -0.000 min  
 Lab File: BF127212.D  
 Acq: 04 Mar 2022 20:35

Instrument : BNA\_F  
 ClientSampleId : TR-4-030322

Tgt Ion:252 Resp: 67968

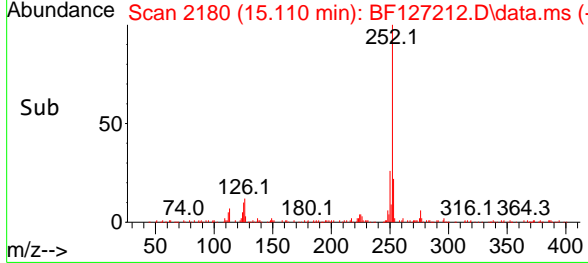
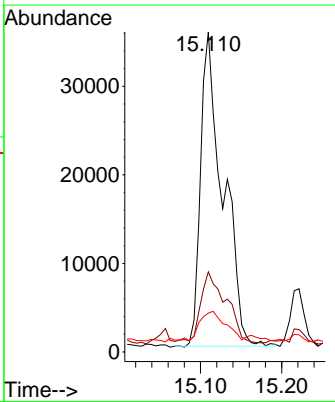
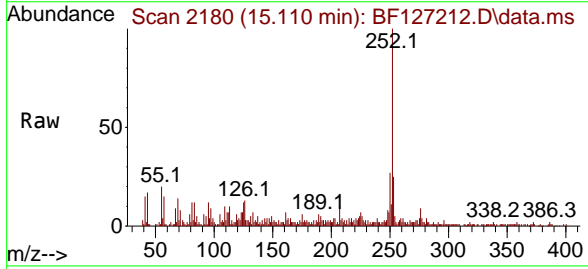
Ion	Ratio	Lower	Upper
252	100		
253	25.1	17.8	26.8
125	12.2	12.4	18.6

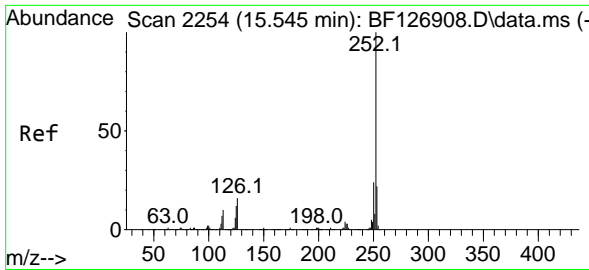


#89  
 Benzo(k)fluoranthene  
 Concen: 6.260 ng  
 RT: 15.110 min Scan# 2180  
 Delta R.T. -0.029 min  
 Lab File: BF127212.D  
 Acq: 04 Mar 2022 20:35

Tgt Ion:252 Resp: 67968

Ion	Ratio	Lower	Upper
252	100		
253	25.1	17.5	26.3
125	12.2	11.8	17.6

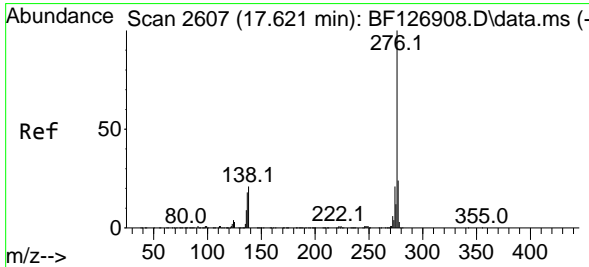
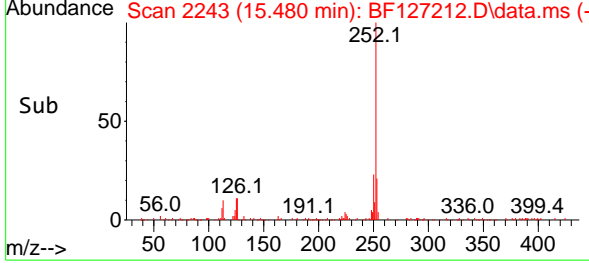
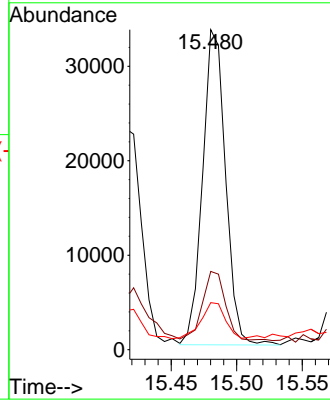
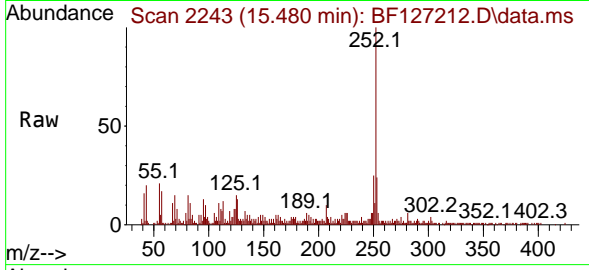




#90  
 Benzo(a)pyrene  
 Concen: 4.635 ng  
 RT: 15.480 min Scan# 21  
 Delta R.T. -0.006 min  
 Lab File: BF127212.D  
 Acq: 04 Mar 2022 20:35

Instrument :  
 BNA\_F  
 Client Sample Id :  
 TR-4-030322

Tgt Ion	Resp	Lower	Upper
252	100		
253	24.5	17.1	25.7
125	14.7	13.0	19.6



#92  
 Benzo(g,h,i)perylene  
 Concen: 2.800 ng  
 RT: 17.509 min Scan# 2588  
 Delta R.T. -0.012 min  
 Lab File: BF127212.D  
 Acq: 04 Mar 2022 20:35

Tgt Ion	Resp	Lower	Upper
276	100		
277	27.9	18.5	27.7#
138	28.5	25.9	38.9

