

Data Path : Z:\svoasrv\HPCHEM1\BNA\_F\Data\BF030422\  
 Data File : BF127213.D  
 Acq On : 04 Mar 2022 21:03  
 Operator : CG\JU  
 Sample : N1774-03 5X  
 Misc :  
 ALS Vial : 20 Sample Multiplier: 1

Instrument :  
 BNA\_F  
 ClientSampleId :  
 DRUM-COMP-B

Quant Time: Mar 05 02:22:20 2022  
 Quant Method : Z:\svoasrv\HPCHEM1\BNA\_F\Methods\8270-BF021622.M  
 Quant Title : ASP BNA STANDARDS FOR 5 POINT CALIBRATION  
 QLast Update : Sat Mar 05 02:16:58 2022  
 Response via : Initial Calibration

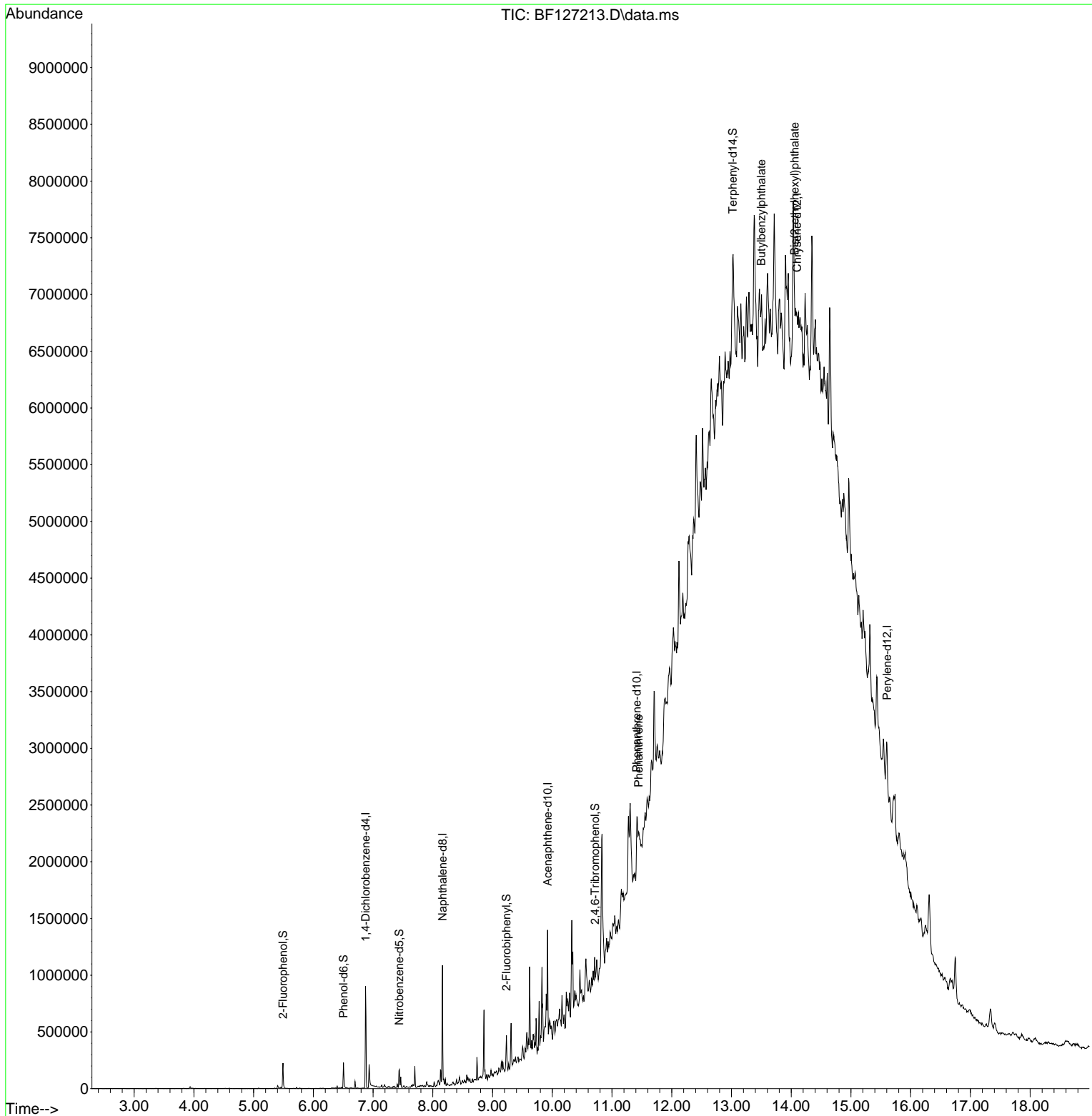
Compound	R.T.	QIon	Response	Conc	Units	Dev(Min)
Internal Standards						
1) 1,4-Dichlorobenzene-d4	6.875	152	111899	20.000	ng	0.00
21) Naphthalene-d8	8.163	136	412720	20.000	ng	# 0.00
39) Acenaphthene-d10	9.922	164	169544	20.000	ng	0.00
64) Phenanthrene-d10	11.416	188	232751	20.000	ng	0.00
76) Chrysene-d12	14.098	240	162271	20.000	ng	# 0.04
86) Perylene-d12	15.604	264	142975	20.000	ng	0.06
System Monitoring Compounds						
5) 2-Fluorophenol	5.493	112	54953	7.590	ng	0.00
7) Phenol-d6	6.504	99	73810	7.555	ng	-0.01
23) Nitrobenzene-d5	7.439	82	48524	5.307	ng	-0.01
42) 2,4,6-Tribromophenol	10.716	330	13341	6.834	ng	0.00
45) 2-Fluorobiphenyl	9.233	172	76910	6.678	ng	0.00
79) Terphenyl-d14	13.021	244	53186	4.818	ng	0.02
Target Compounds						
71) Phenanthrene	11.445	178	64575	4.957	ng	# 78
80) Butylbenzylphthalate	13.498	149	25540	3.827	ng	# 65
84) Bis(2-ethylhexyl)phtha...	14.057	149	35340	4.033	ng	# 68

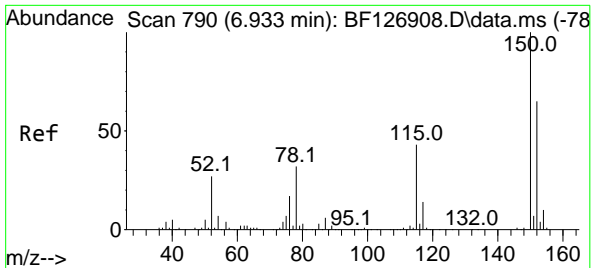
(#) = qualifier out of range (m) = manual integration (+) = signals summed

Data Path : Z:\svoasrv\HPCHEM1\BNA\_F\Data\BF030422\  
 Data File : BF127213.D  
 Acq On : 04 Mar 2022 21:03  
 Operator : CG\JU  
 Sample : N1774-03 5X  
 Misc :  
 ALS Vial : 20 Sample Multiplier: 1

Instrument :  
 BNA\_F  
 ClientSampleId :  
 DRUM-COMP-B

Quant Time: Mar 05 02:22:20 2022  
 Quant Method : Z:\svoasrv\HPCHEM1\BNA\_F\Methods\8270-BF021622.M  
 Quant Title : ASP BNA STANDARDS FOR 5 POINT CALIBRATION  
 QLast Update : Sat Mar 05 02:16:58 2022  
 Response via : Initial Calibration

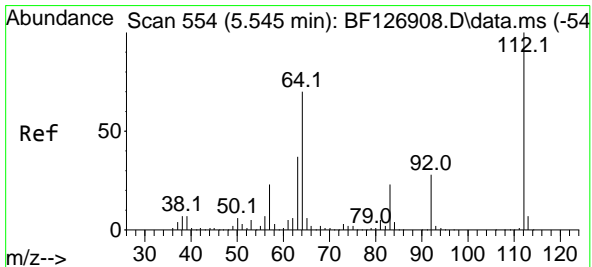
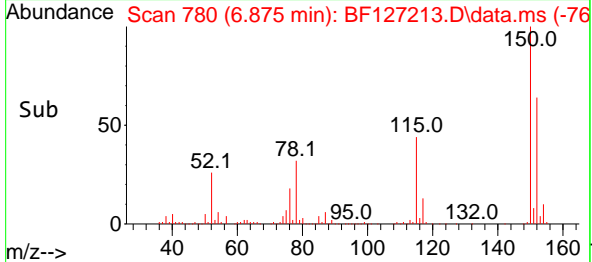
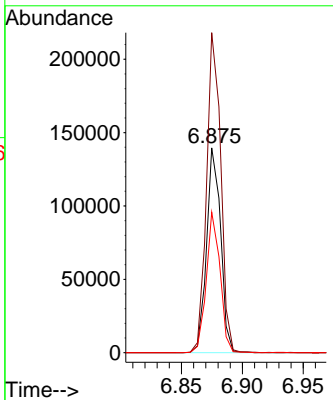
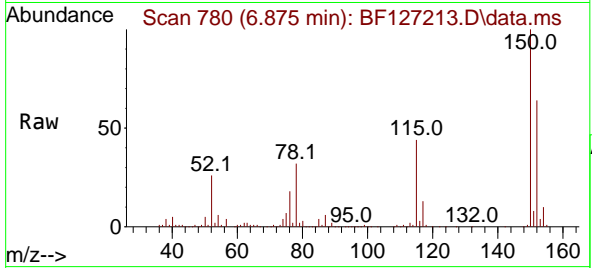




#1  
 1,4-Dichlorobenzene-d4  
 Concen: 20.000 ng  
 RT: 6.875 min Scan# 71  
 Delta R.T. -0.006 min  
 Lab File: BF127213.D  
 Acq: 04 Mar 2022 21:03

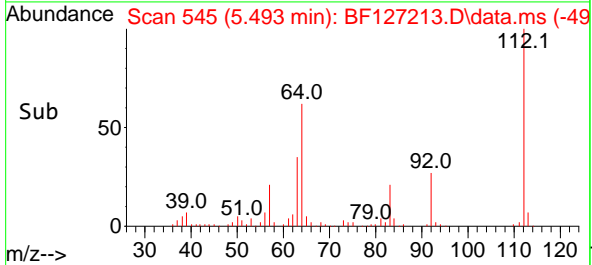
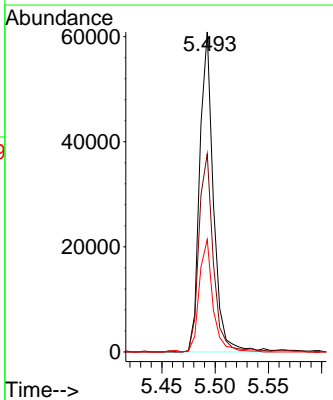
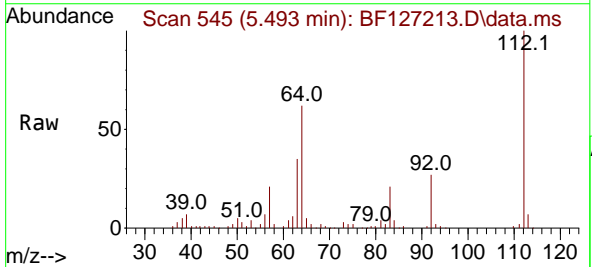
Instrument :  
 BNA\_F  
 ClientSampleId :  
 DRUM-COMP-B

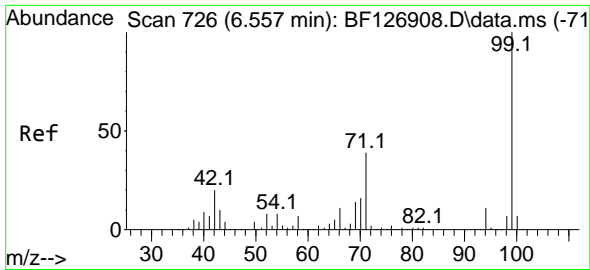
Tgt Ion:152 Resp: 111899  
 Ion Ratio Lower Upper  
 152 100  
 150 156.3 128.1 192.1  
 115 68.6 56.7 85.1



#5  
 2-Fluorophenol  
 Concen: 7.590 ng  
 RT: 5.493 min Scan# 545  
 Delta R.T. -0.006 min  
 Lab File: BF127213.D  
 Acq: 04 Mar 2022 21:03

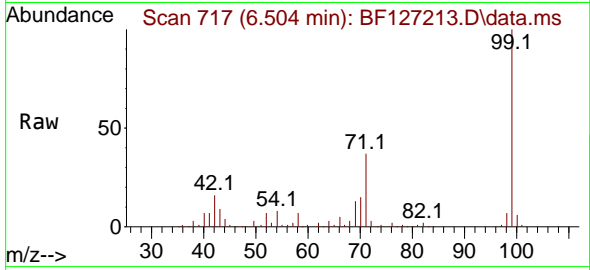
Tgt Ion:112 Resp: 54953  
 Ion Ratio Lower Upper  
 112 100  
 64 61.9 49.5 74.3  
 63 35.1 23.9 35.9



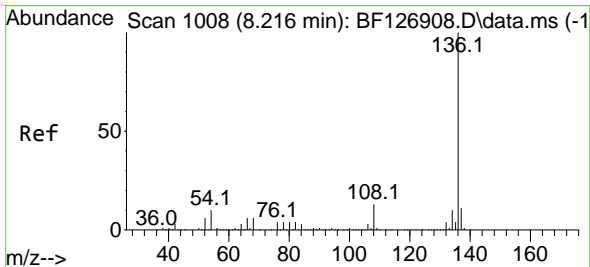
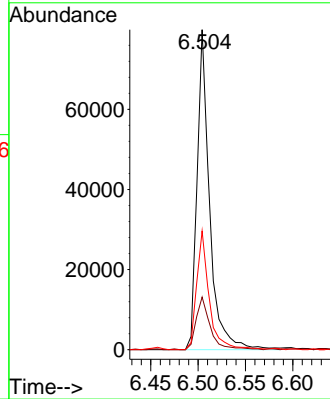
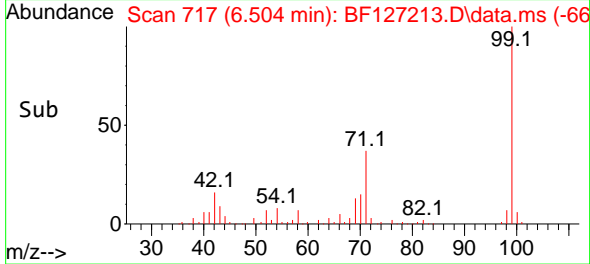


#7  
 Phenol-d6  
 Concen: 7.555 ng  
 RT: 6.504 min Scan# 71  
 Delta R.T. -0.012 min  
 Lab File: BF127213.D  
 Acq: 04 Mar 2022 21:03

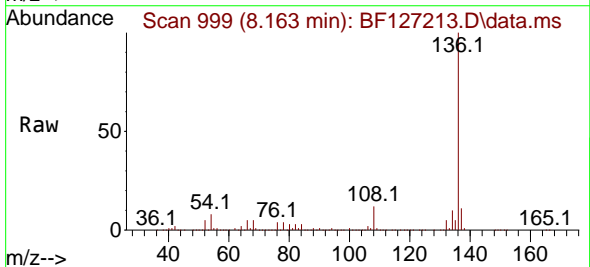
Instrument :  
 BNA\_F  
 ClientSampleId :  
 DRUM-COMP-B



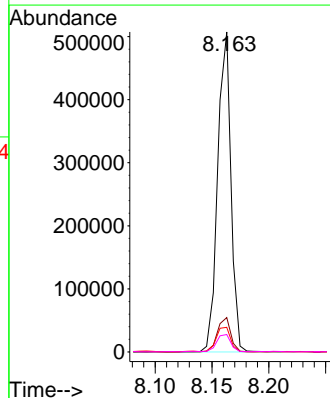
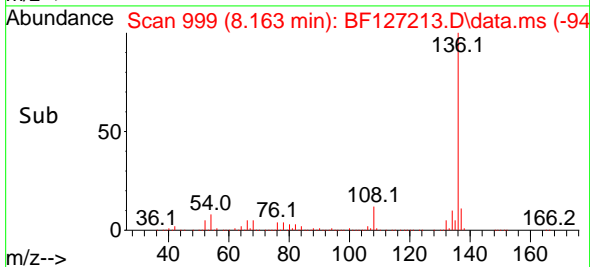
Tgt Ion: 99 Resp: 73810  
 Ion Ratio Lower Upper  
 99 100  
 42 16.4 14.2 21.4  
 71 37.1 24.3 36.5#

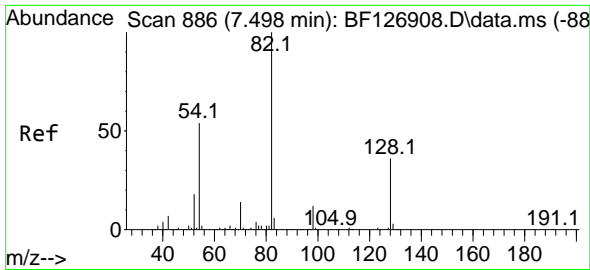


#21  
 Naphthalene-d8  
 Concen: 20.000 ng  
 RT: 8.163 min Scan# 999  
 Delta R.T. -0.000 min  
 Lab File: BF127213.D  
 Acq: 04 Mar 2022 21:03



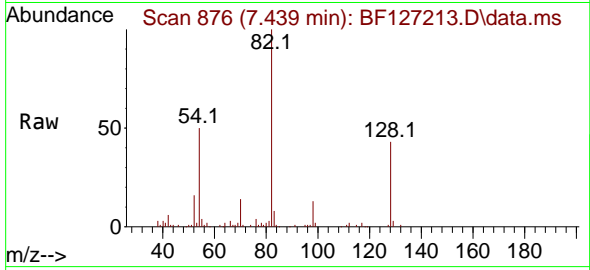
Tgt Ion:136 Resp: 412720  
 Ion Ratio Lower Upper  
 136 100  
 137 10.8 8.6 13.0  
 54 7.7 7.8 11.6#  
 68 5.4 6.3 9.5#





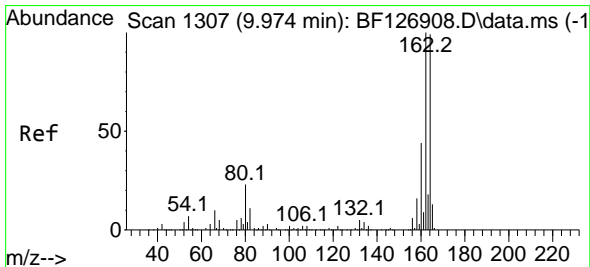
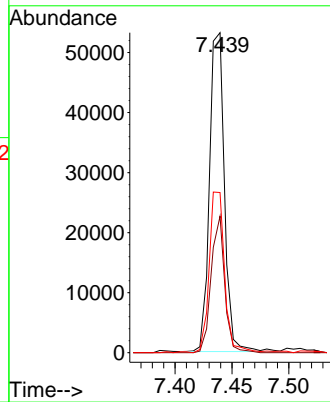
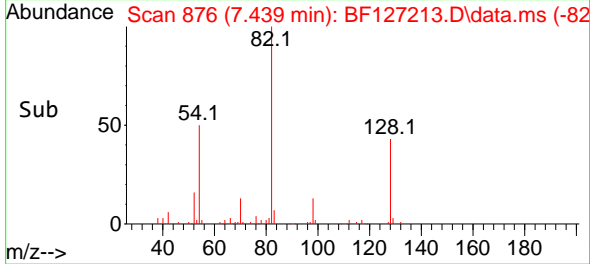
#23  
 Nitrobenzene-d5  
 Concen: 5.307 ng  
 RT: 7.439 min Scan# 81  
 Delta R.T. -0.012 min  
 Lab File: BF127213.D  
 Acq: 04 Mar 2022 21:03

Instrument :  
 BNA\_F  
 ClientSampleId :  
 DRUM-COMP-B

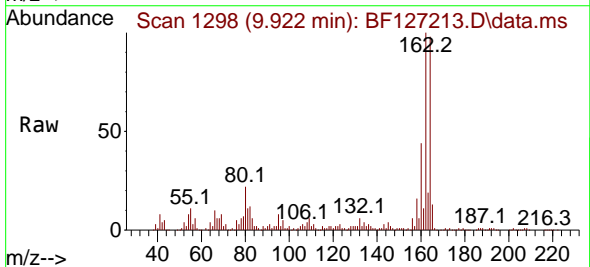


Tgt Ion: 82 Resp: 48524

Ion	Ratio	Lower	Upper
82	100		
128	42.7	32.7	49.1
54	50.0	41.7	62.5

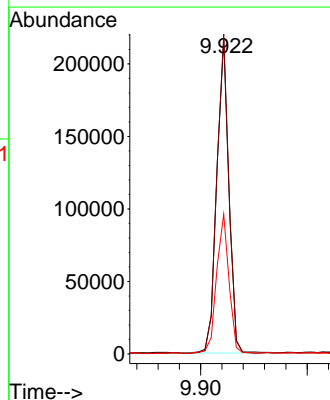
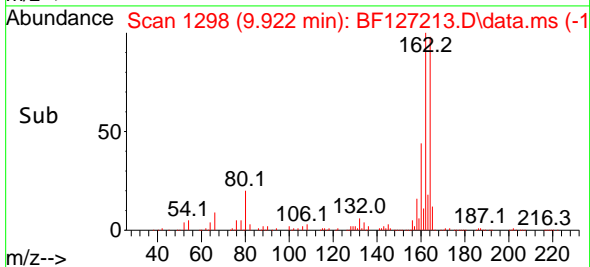


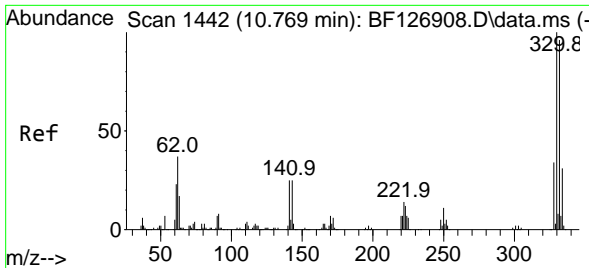
#39  
 Acenaphthene-d10  
 Concen: 20.000 ng  
 RT: 9.922 min Scan# 1298  
 Delta R.T. -0.000 min  
 Lab File: BF127213.D  
 Acq: 04 Mar 2022 21:03



Tgt Ion: 164 Resp: 169544

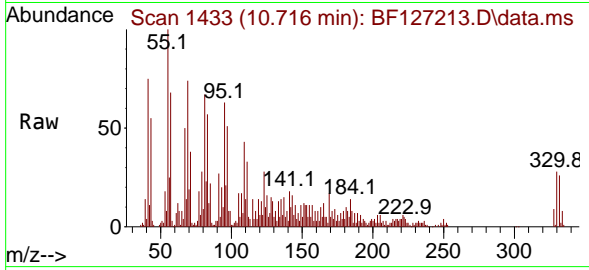
Ion	Ratio	Lower	Upper
164	100		
162	101.7	81.4	122.0
160	44.4	36.6	54.8



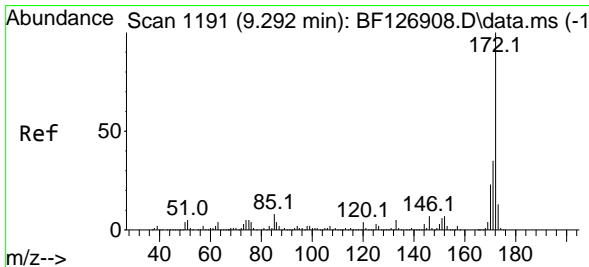
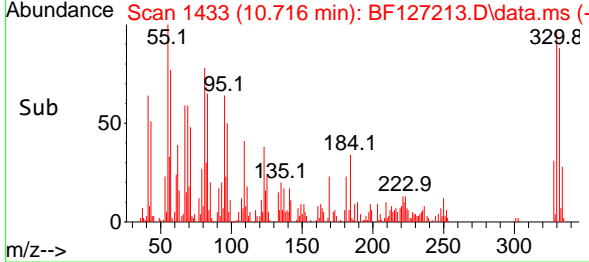
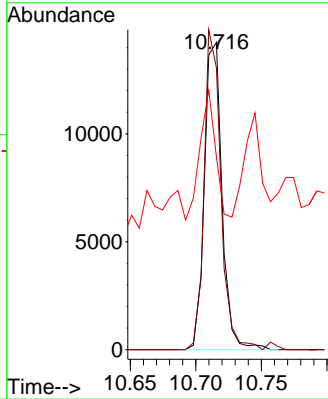


#42  
 2,4,6-Tribromophenol  
 Concen: 6.834 ng  
 RT: 10.716 min Scan# 1442  
 Delta R.T. -0.000 min  
 Lab File: BF127213.D  
 Acq: 04 Mar 2022 21:03

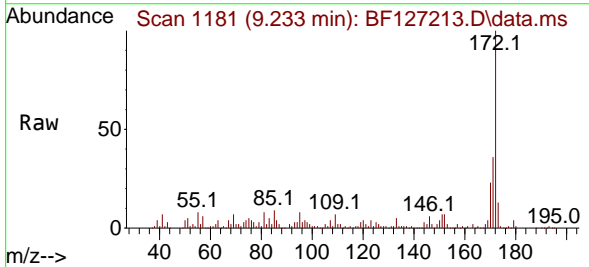
Instrument :  
 BNA\_F  
 ClientSampleId :  
 DRUM-COMP-B



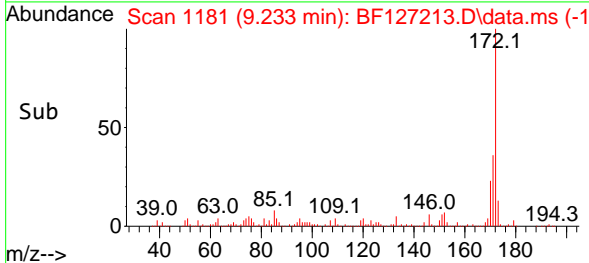
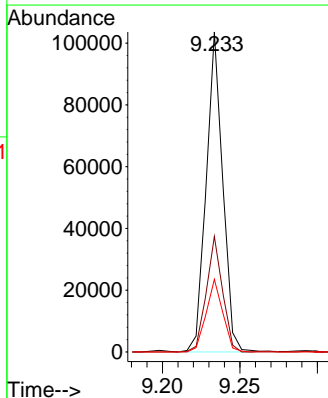
Tgt Ion:330 Resp: 13341  
 Ion Ratio Lower Upper  
 330 100  
 332 98.5 76.0 114.0  
 141 37.5 30.1 45.1

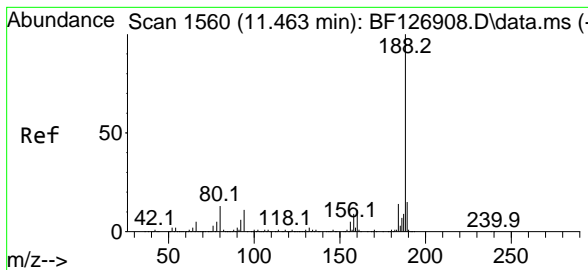


#45  
 2-Fluorobiphenyl  
 Concen: 6.678 ng  
 RT: 9.233 min Scan# 1181  
 Delta R.T. -0.006 min  
 Lab File: BF127213.D  
 Acq: 04 Mar 2022 21:03



Tgt Ion:172 Resp: 76910  
 Ion Ratio Lower Upper  
 172 100  
 171 36.1 28.3 42.5  
 170 22.7 19.0 28.6



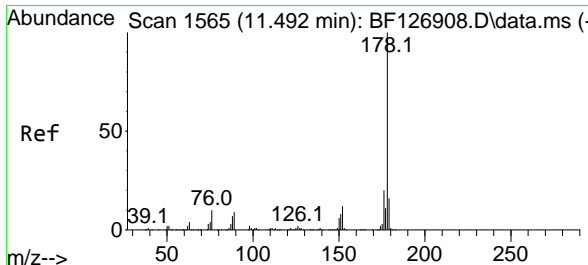
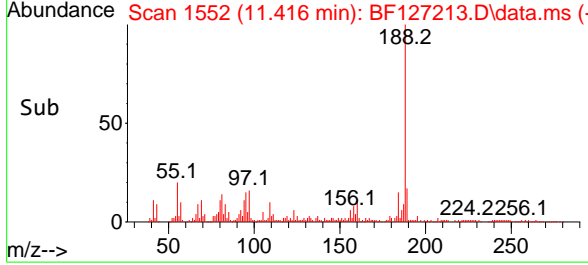
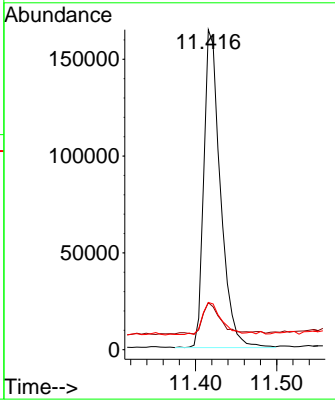
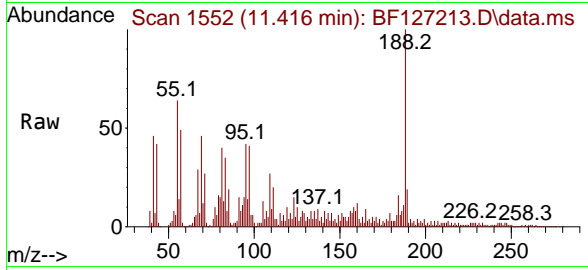


#64  
 Phenanthrene-d10  
 Concen: 20.000 ng  
 RT: 11.416 min Scan# 11  
 Delta R.T. -0.000 min  
 Lab File: BF127213.D  
 Acq: 04 Mar 2022 21:03

Instrument : BNA\_F  
 ClientSampleId : DRUM-COMP-B

Tgt Ion:188 Resp: 232751

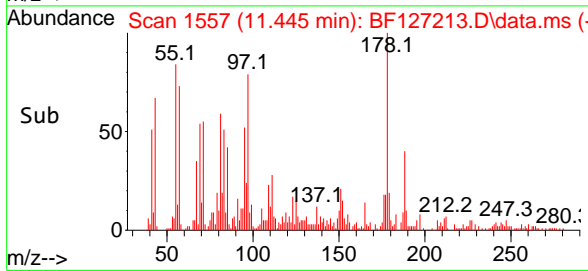
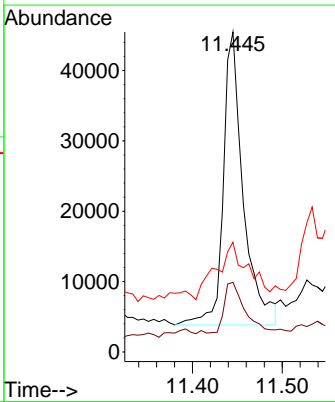
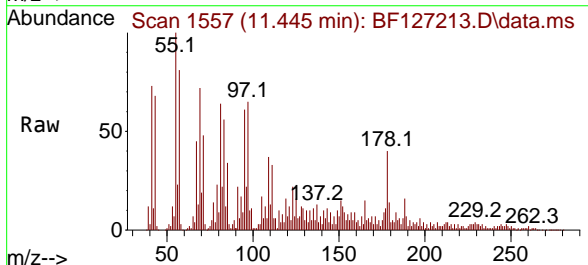
Ion	Ratio	Lower	Upper
188	100		
94	14.7	10.1	15.1
80	14.7	11.8	17.6

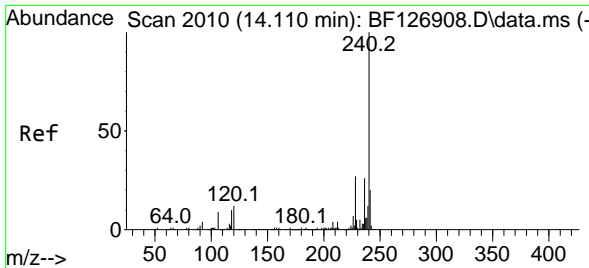


#71  
 Phenanthrene  
 Concen: 4.957 ng  
 RT: 11.445 min Scan# 1557  
 Delta R.T. 0.006 min  
 Lab File: BF127213.D  
 Acq: 04 Mar 2022 21:03

Tgt Ion:178 Resp: 64575

Ion	Ratio	Lower	Upper
178	100		
176	21.7	15.7	23.5
179	34.3	12.3	18.5



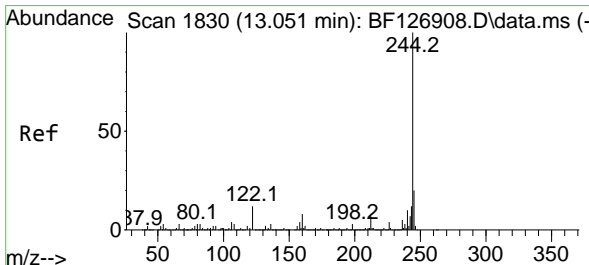
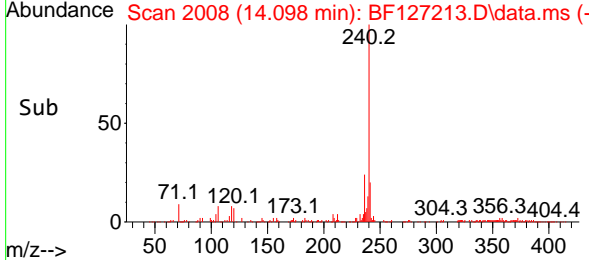
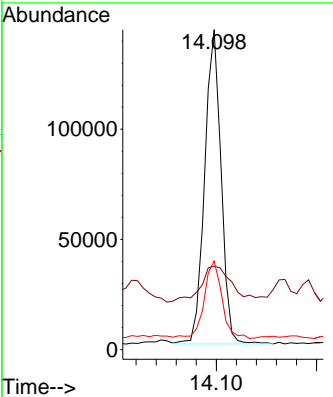
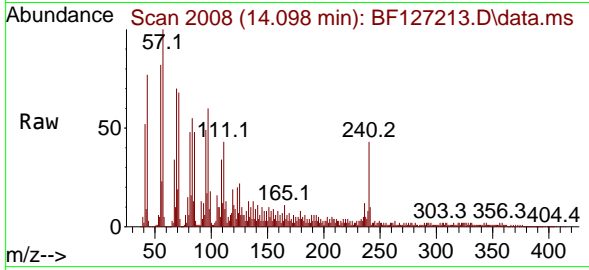


#76  
 Chrysene-d12  
 Concen: 20.000 ng  
 RT: 14.098 min Scan# 2010  
 Delta R.T. 0.035 min  
 Lab File: BF127213.D  
 Acq: 04 Mar 2022 21:03

Instrument : BNA\_F  
 ClientSampleId : DRUM-COMP-B

Tgt Ion:240 Resp: 162271

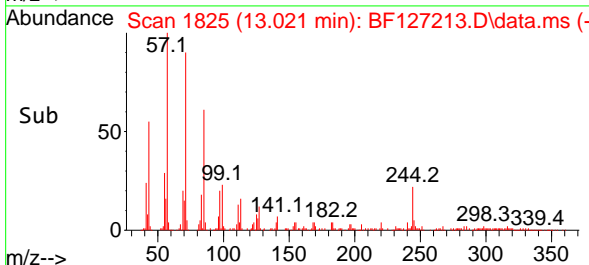
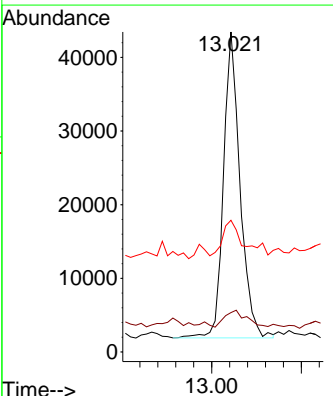
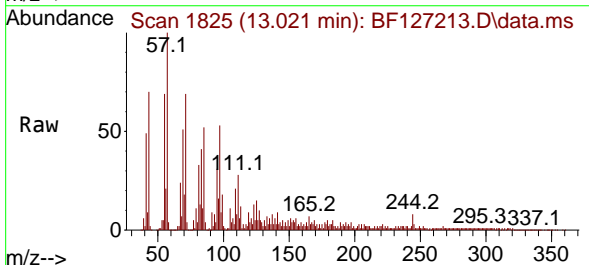
Ion	Ratio	Lower	Upper
240	100		
120	26.1	14.4	21.6#
236	27.7	20.5	30.7



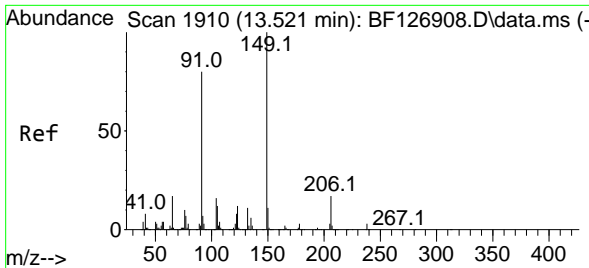
#79  
 Terphenyl-d14  
 Concen: 4.818 ng  
 RT: 13.021 min Scan# 1825  
 Delta R.T. 0.024 min  
 Lab File: BF127213.D  
 Acq: 04 Mar 2022 21:03

Tgt Ion:244 Resp: 53186

Ion	Ratio	Lower	Upper
244	100		
212	12.3	5.0	7.4#
122	41.1	13.3	19.9#





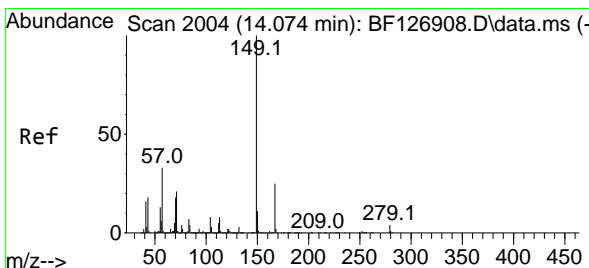
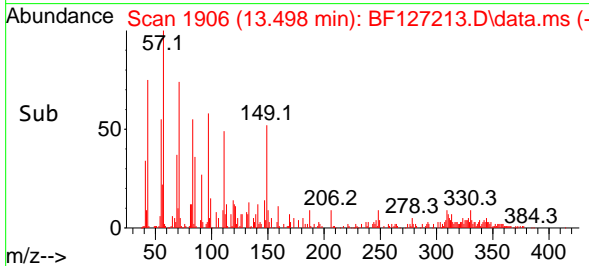
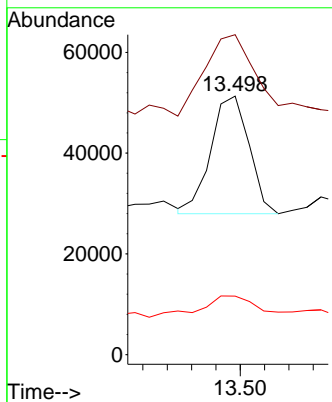
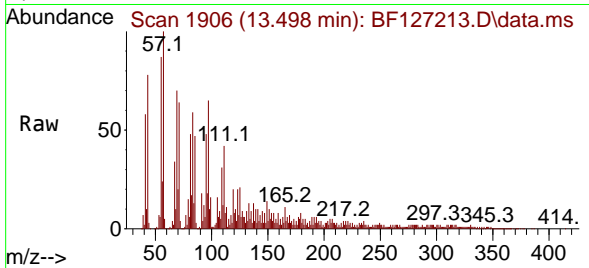


#80  
 Butylbenzylphthalate  
 Concen: 3.827 ng  
 RT: 13.498 min Scan# 1910  
 Delta R.T. 0.023 min  
 Lab File: BF127213.D  
 Acq: 04 Mar 2022 21:03

Instrument :  
 BNA\_F  
 ClientSampleId :  
 DRUM-COMP-B

Tgt Ion:149 Resp: 25540

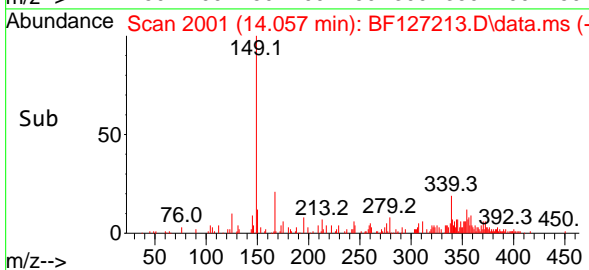
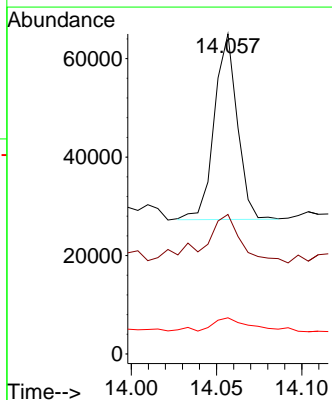
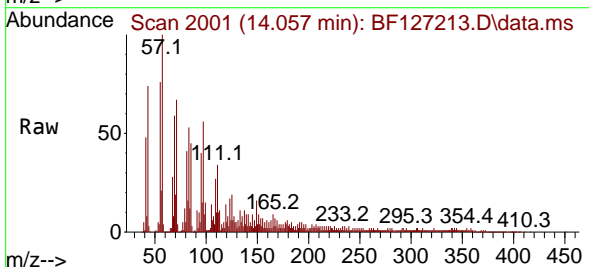
Ion	Ratio	Lower	Upper
149	100		
91	123.7	70.5	105.7#
206	22.7	12.6	19.0#

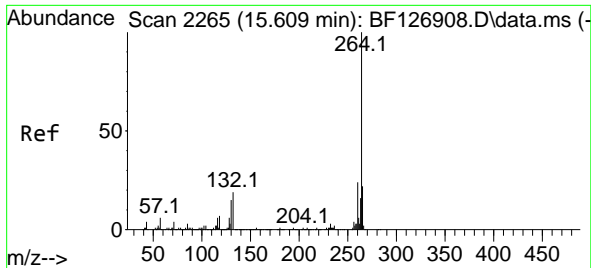


#84  
 Bis(2-ethylhexyl)phthalate  
 Concen: 4.033 ng  
 RT: 14.057 min Scan# 2001  
 Delta R.T. 0.029 min  
 Lab File: BF127213.D  
 Acq: 04 Mar 2022 21:03

Tgt Ion:149 Resp: 35340

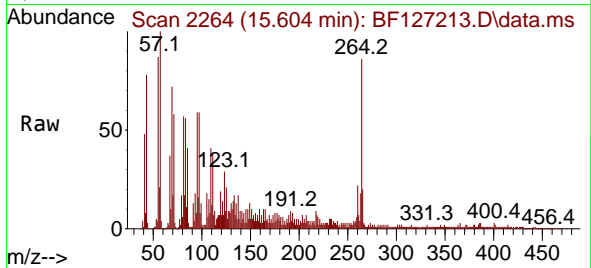
Ion	Ratio	Lower	Upper
149	100		
167	43.6	21.4	32.2#
279	11.3	2.4	3.6#





#86  
 Perylene-d12  
 Concen: 20.000 ng  
 RT: 15.604 min Scan# 21  
 Delta R.T. 0.059 min  
 Lab File: BF127213.D  
 Acq: 04 Mar 2022 21:03

Instrument :  
 BNA\_F  
 ClientSampleId :  
 DRUM-COMP-B



Tgt Ion:264 Resp: 142975

Ion	Ratio	Lower	Upper
264	100		
260	25.0	19.2	28.8
265	22.7	17.4	26.2

