

Data Path : Z:\HPCHEM1\BNA F\DATA\BF030617\
 Data File : BF093404.D
 Acq On : 6 Mar 2017 16:50
 Operator : SJ/MA
 Sample : I2061-01
 Misc :
 ALS Vial : 6 Sample Multiplier: 1

Instrument :
 BNA_F
 ClientSampleId :
 IMPACT

Quant Time: Mar 07 00:10:11 2017
 Quant Method : Z:\HPCHEM1\BNA F\METHODS\8270-BF013017.M
 Quant Title : ASP BNA STANDARDS FOR 5 POINT CALIBRATION
 QLast Update : Tue Mar 07 00:03:56 2017
 Response via : Initial Calibration

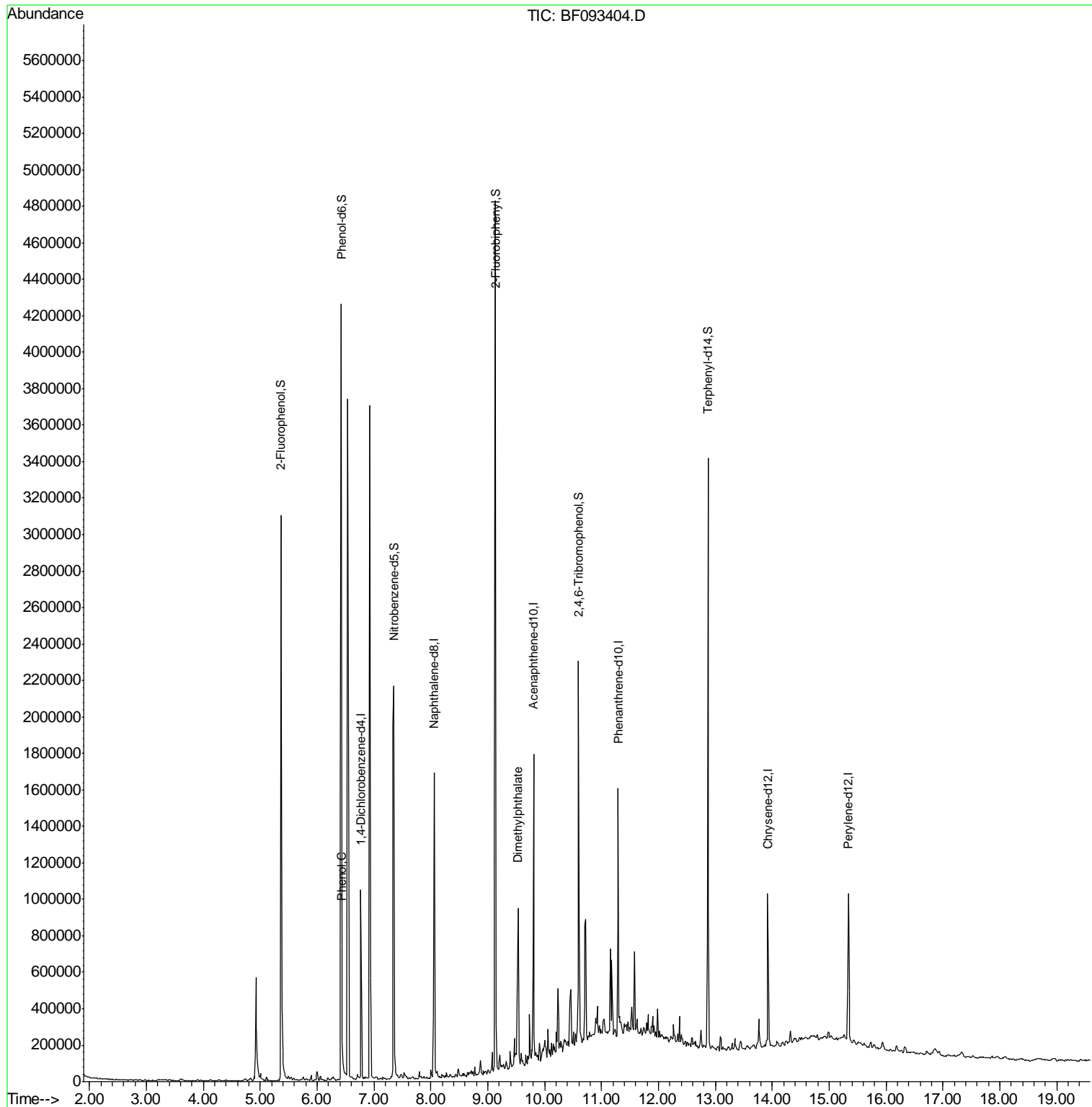
Internal Standards	R.T.	QIon	Response	Conc	Units	Dev(Min)
1) 1,4-Dichlorobenzene-d4	6.77	152	184552	20.00	ng	0.00
21) Naphthalene-d8	8.06	136	734980	20.00	ng	0.00
38) Acenaphthene-d10	9.81	164	329325	20.00	ng	0.00
63) Phenanthrene-d10	11.29	188	558156	20.00	ng	0.00
75) Chrysene-d12	13.92	240	351322	20.00	ng	-0.02
86) Perylene-d12	15.34	264	340506	20.00	ng	0.00
System Monitoring Compounds						
5) 2-Fluorophenol	5.36	112	1256374	116.79	ng	0.00
7) Phenol-d6	6.42	99	1584029	114.45	ng	0.00
23) Nitrobenzene-d5	7.35	82	1044908	79.17	ng	0.00
41) 2,4,6-Tribromophenol	10.60	330	260617	109.42	ng	0.00
44) 2-Fluorobiphenyl	9.13	172	1479959	81.42	ng	0.00
78) Terphenyl-d14	12.87	244	1007697	67.40	ng	0.00
Target Compounds						
10) Phenol	6.44	94	99415	6.14	ng	# 74
49) Dimethylphthalate	9.53	163	368828	16.63	ng	100

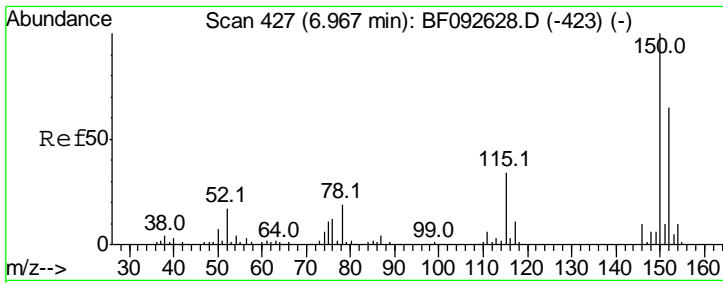
(#) = qualifier out of range (m) = manual integration (+) = signals summed

Data Path : Z:\HPCHEM1\BNA F\DATA\BF030617\
 Data File : BF093404.D
 Acq On : 6 Mar 2017 16:50
 Operator : SJ/MA
 Sample : I2061-01
 Misc :
 ALS Vial : 6 Sample Multiplier: 1

Instrument :
 BNA_F
 ClientSampleId :
 IMPACT

Quant Time: Mar 07 00:10:11 2017
 Quant Method : Z:\HPCHEM1\BNA F\METHODS\8270-BF013017.M
 Quant Title : ASP BNA STANDARDS FOR 5 POINT CALIBRATION
 QLast Update : Tue Mar 07 00:03:56 2017
 Response via : Initial Calibration

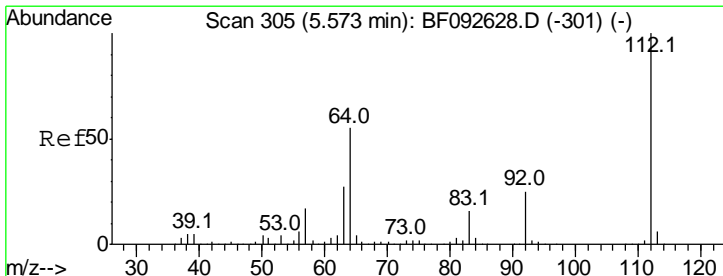
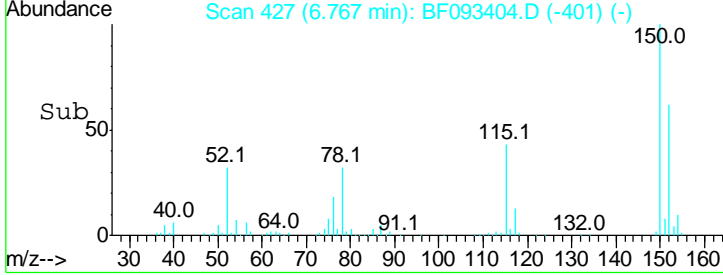
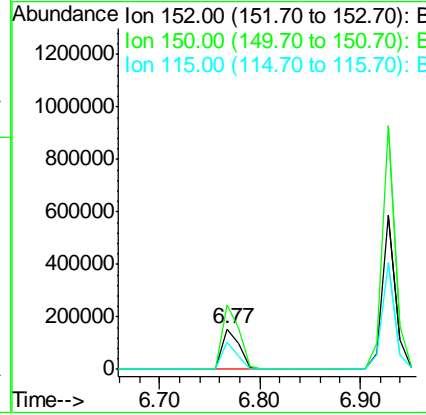
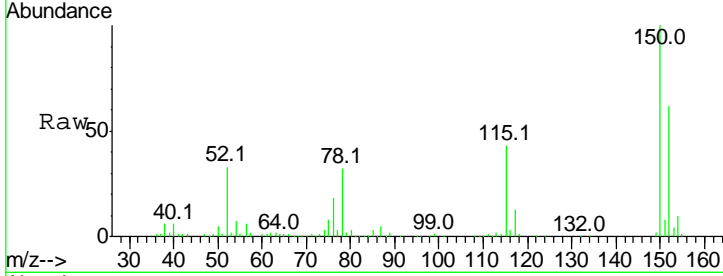




#1
 1,4-Dichlorobenzene-d4
 Concen: 20.00 ng
 RT: 6.77 min Scan# 427
 Delta R.T. -0.01 min
 Lab File: BF093404.D
 Acq: 6 Mar 2017 16:50

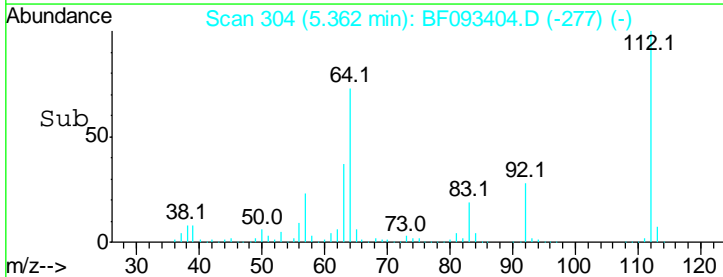
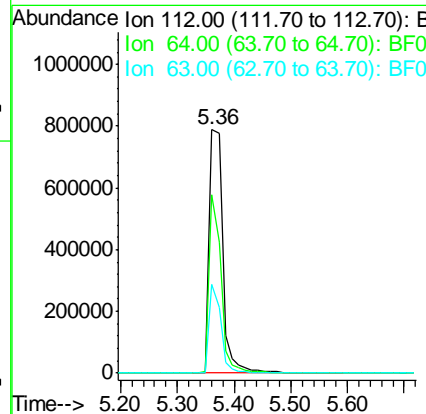
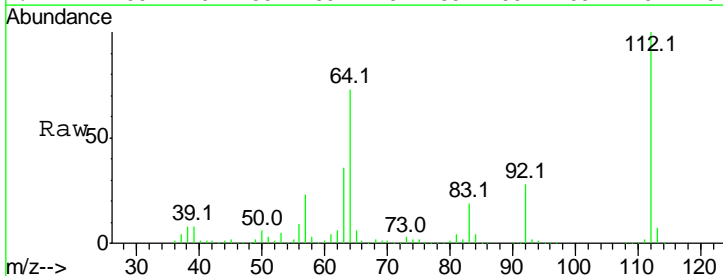
Instrument :
 BNA_F
 ClientSampleId :
 IMPACT

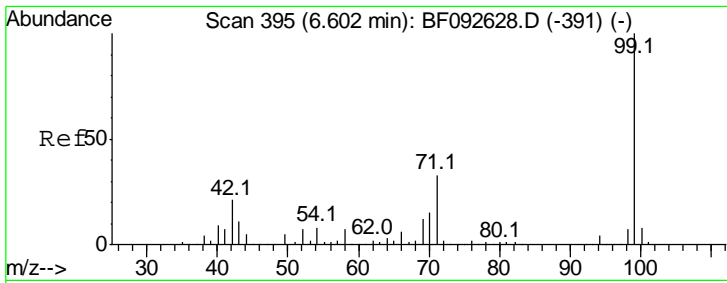
Tgt Ion	Resp	Lower	Upper
152	184552		
150	160.9	124.9	187.3
115	68.5	46.0	69.0



#5
 2-Fluorophenol
 Concen: 116.79 ng
 RT: 5.36 min Scan# 304
 Delta R.T. 0.01 min
 Lab File: BF093404.D
 Acq: 6 Mar 2017 16:50

Tgt Ion	Resp	Lower	Upper
112	1256374		
112	100		
64	73.3	46.1	69.1#
63	36.5	23.8	35.6#



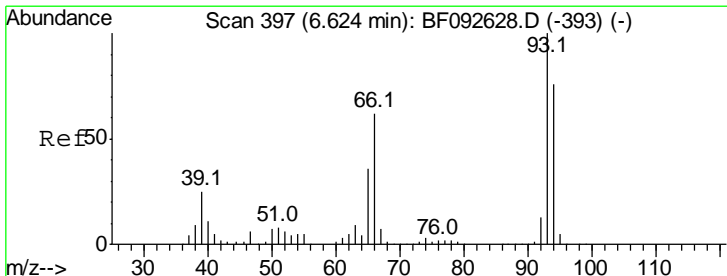
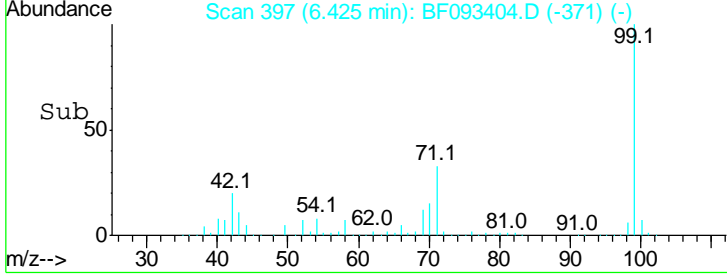
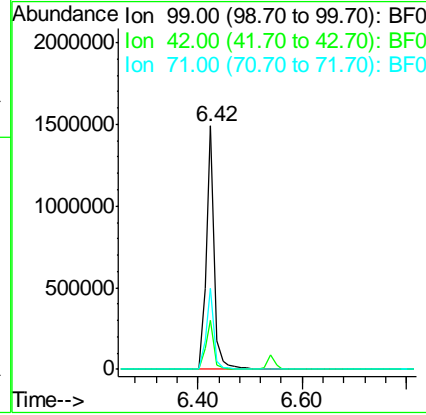
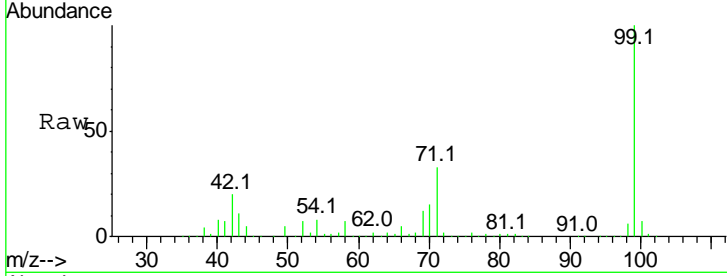


#7
 Phenol-d6
 Concen: 114.45 ng
 RT: 6.42 min Scan# 397
 Delta R.T. -0.01 min
 Lab File: BF093404.D
 Acq: 6 Mar 2017 16:50

Instrument :
 BNA_F
ClientSampled :
 IMPACT

Tgt Ion: 99 Resp: 1584029

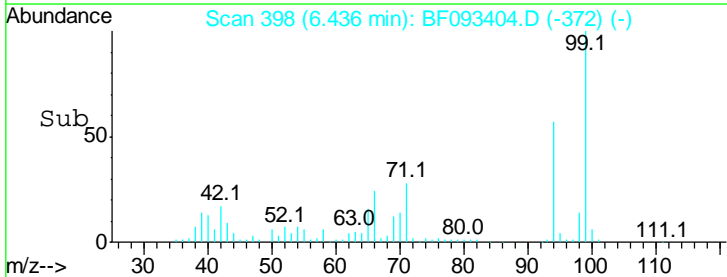
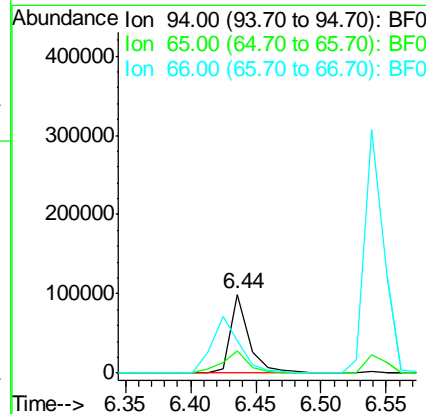
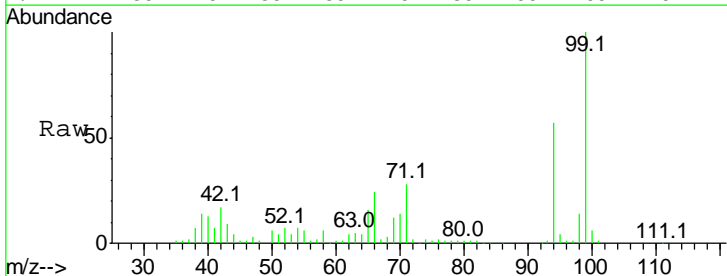
Ion	Ratio	Lower	Upper
99	100		
42	20.4	15.6	23.4
71	33.4	27.5	41.3

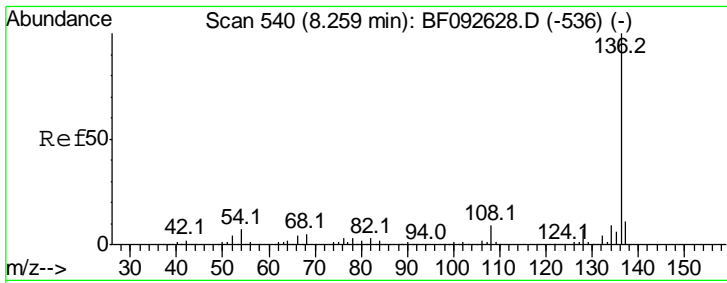


#10
 Phenol
 Concen: 6.14 ng
 RT: 6.44 min Scan# 398
 Delta R.T. -0.01 min
 Lab File: BF093404.D
 Acq: 6 Mar 2017 16:50

Tgt Ion: 94 Resp: 99415

Ion	Ratio	Lower	Upper
94	100		
65	28.1	21.4	61.4
66	41.2	44.0	84.0#



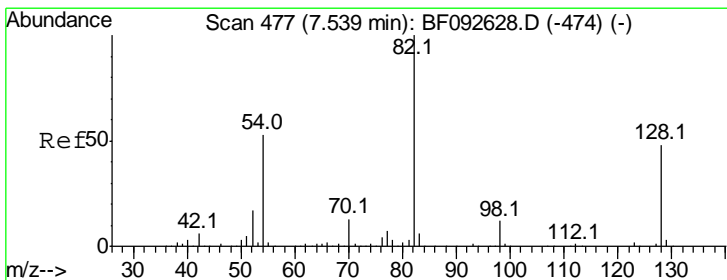
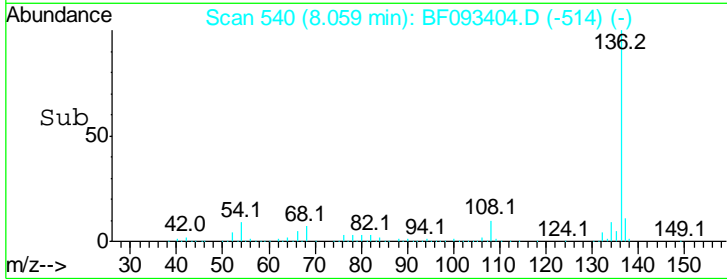
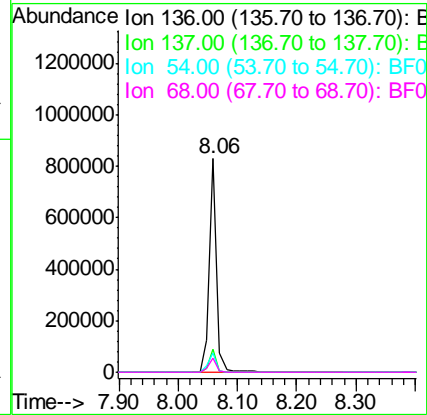
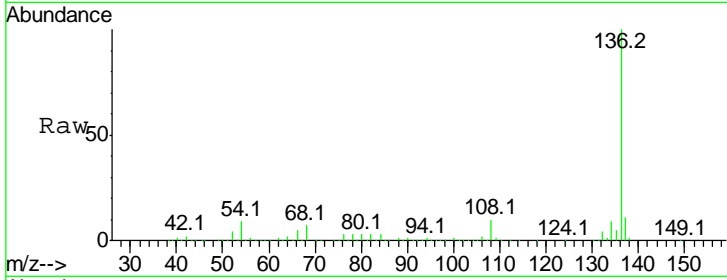


#21
 Naphthalene-d8
 Concen: 20.00 ng
 RT: 8.06 min Scan# 540
 Delta R.T. -0.01 min
 Lab File: BF093404.D
 Acq: 6 Mar 2017 16:50

Instrument :
 BNA_F
ClientSampled :
 IMPACT

Tgt Ion: 136 Resp: 734980

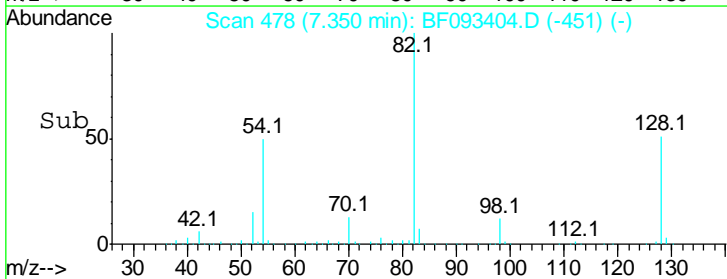
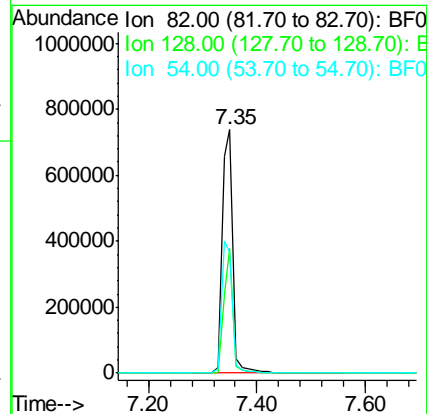
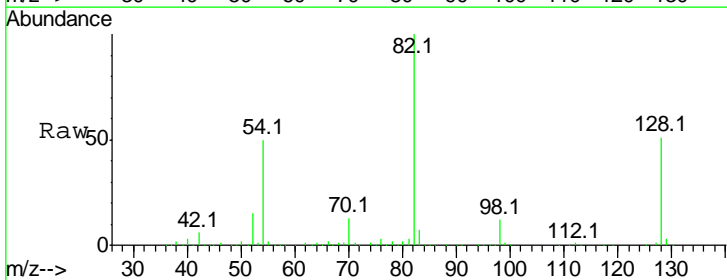
Ion	Ratio	Lower	Upper
136	100		
137	11.0	8.4	12.6
54	9.2	4.5	6.7#
68	6.7	3.6	5.4#

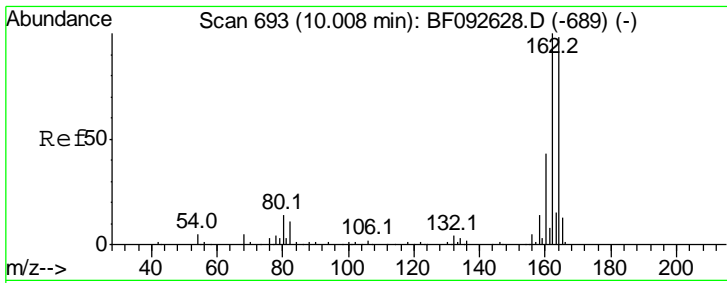


#23
 Nitrobenzene-d5
 Concen: 79.17 ng
 RT: 7.35 min Scan# 478
 Delta R.T. 0.01 min
 Lab File: BF093404.D
 Acq: 6 Mar 2017 16:50

Tgt Ion: 82 Resp: 1044908

Ion	Ratio	Lower	Upper
82	100		
128	51.3	34.6	52.0
54	49.7	39.5	59.3

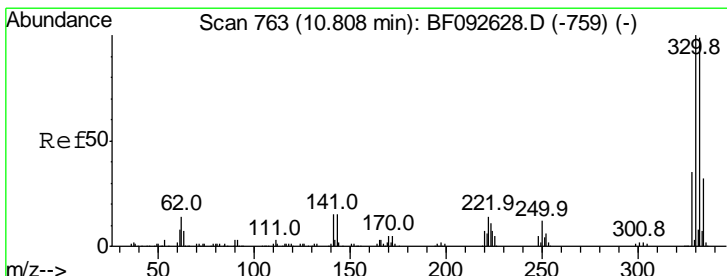
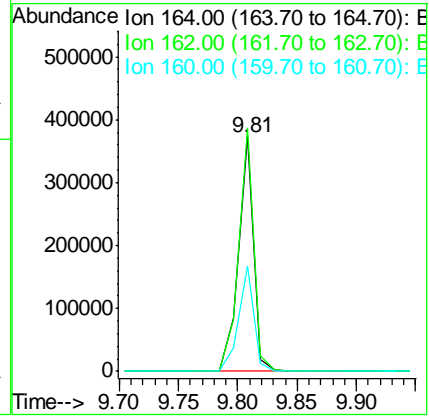
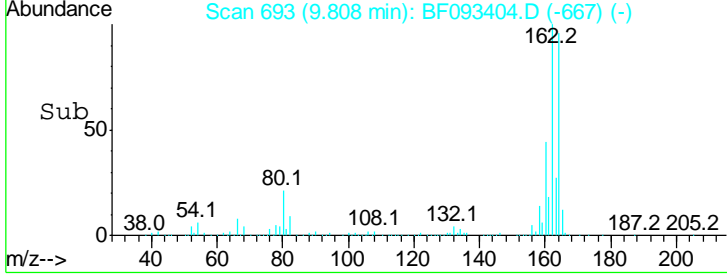
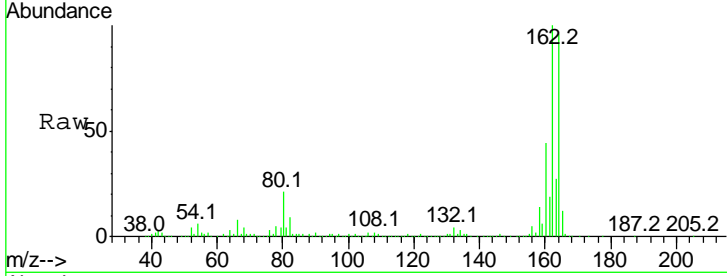




#38
 Acenaphthene-d10
 Concen: 20.00 ng
 RT: 9.81 min Scan# 693
 Delta R.T. -0.01 min
 Lab File: BF093404.D
 Acq: 6 Mar 2017 16:50

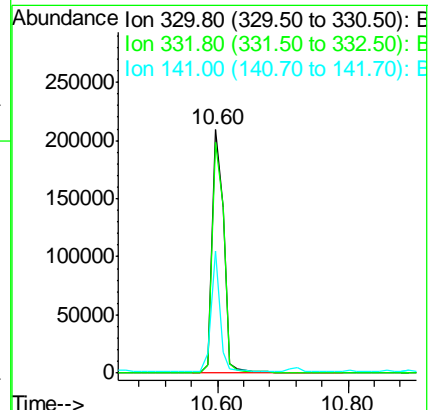
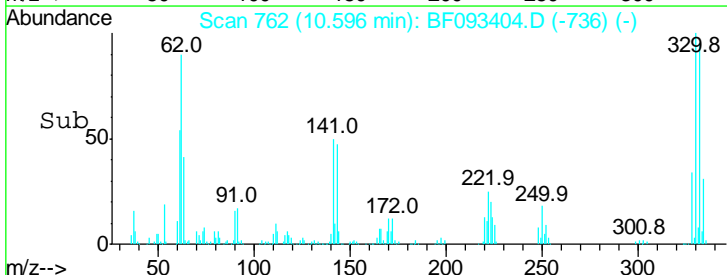
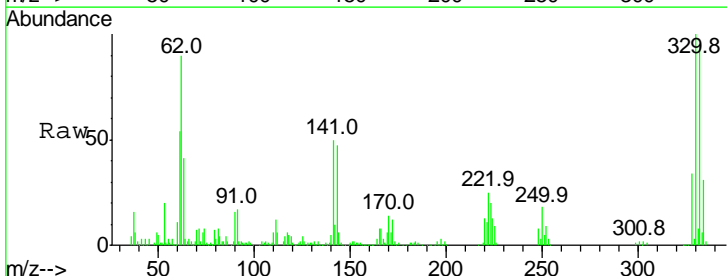
Instrument :
 BNA_F
 ClientSampled :
 IMPACT

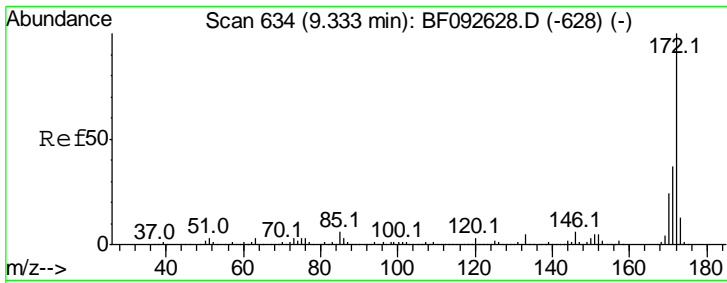
Tgt Ion	Resp	Lower	Upper
164	100		
162	104.0	80.2	120.2
160	45.2	36.9	55.3



#41
 2,4,6-Tribromophenol
 Concen: 109.42 ng
 RT: 10.60 min Scan# 762
 Delta R.T. -0.01 min
 Lab File: BF093404.D
 Acq: 6 Mar 2017 16:50

Tgt Ion	Resp	Lower	Upper
330	100		
332	97.0	77.4	116.2
141	37.8	34.1	51.1



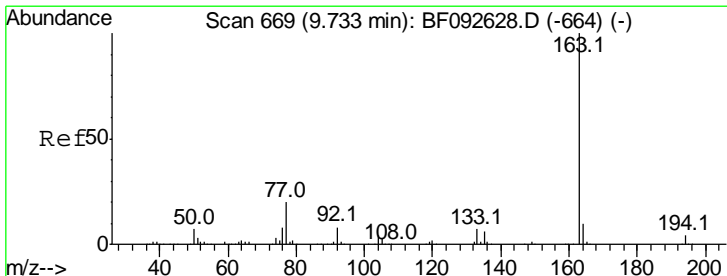
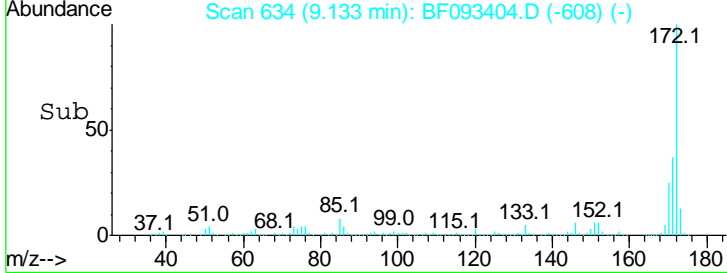
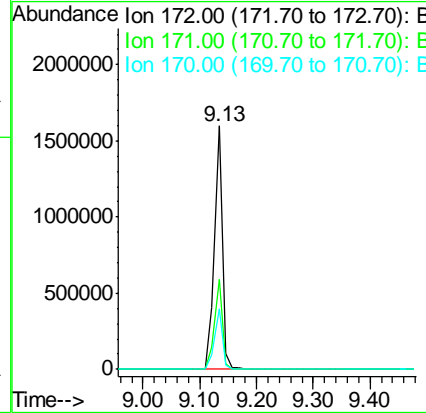
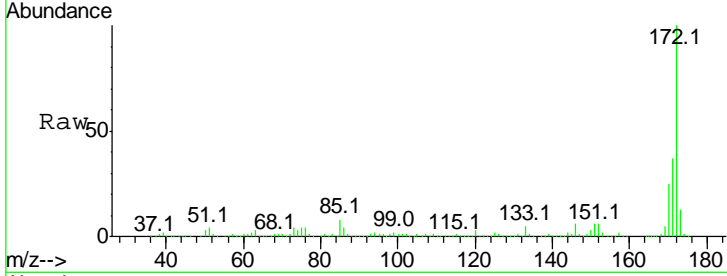


#44
 2-Fluorobiphenyl
 Concen: 81.42 ng
 RT: 9.13 min Scan# 634
 Delta R.T. -0.01 min
 Lab File: BF093404.D
 Acq: 6 Mar 2017 16:50

Instrument :
 BNA_F
 ClientSampled :
 IMPACT

Tot Ion:172 Resp: 1479959

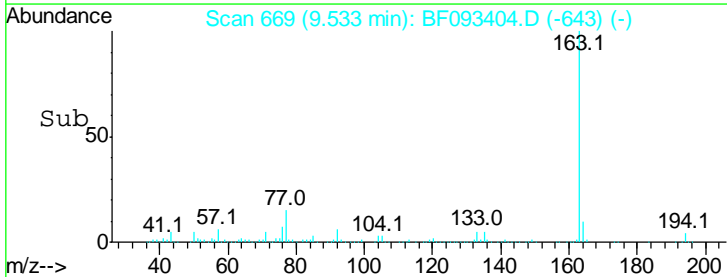
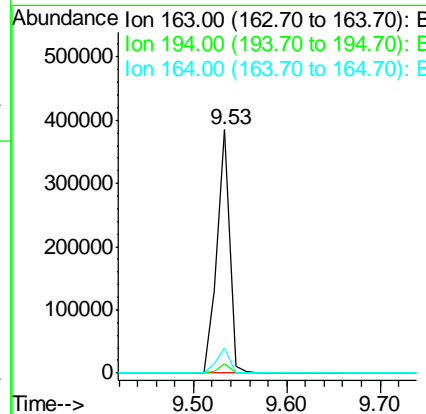
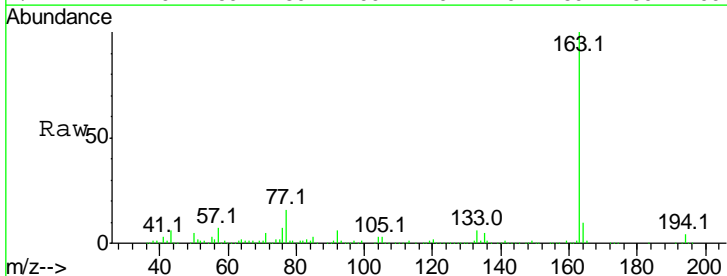
Ion	Ratio	Lower	Upper
172	100		
171	36.7	29.4	44.0
170	24.7	20.2	30.4

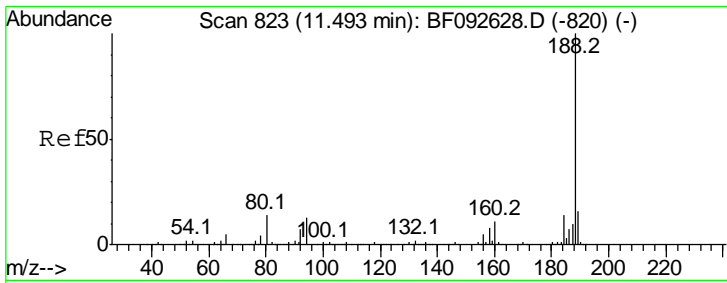


#49
 Dimethylphthalate
 Concen: 16.63 ng
 RT: 9.53 min Scan# 669
 Delta R.T. -0.01 min
 Lab File: BF093404.D
 Acq: 6 Mar 2017 16:50

Tgt Ion:163 Resp: 368828

Ion	Ratio	Lower	Upper
163	100		
194	3.7	3.0	4.4
164	10.0	8.0	12.0

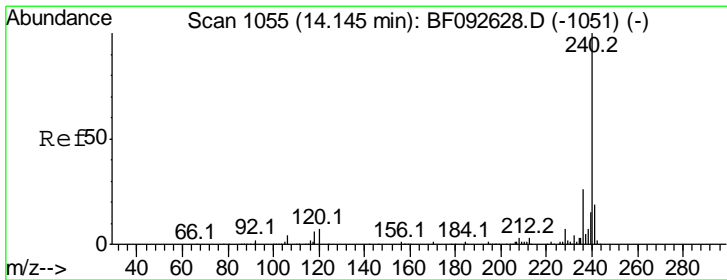
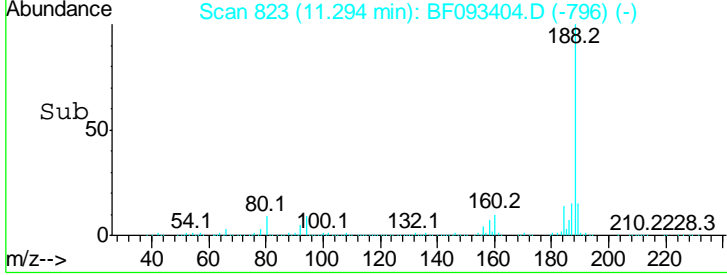
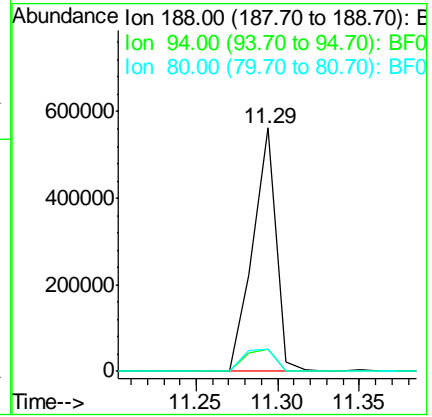
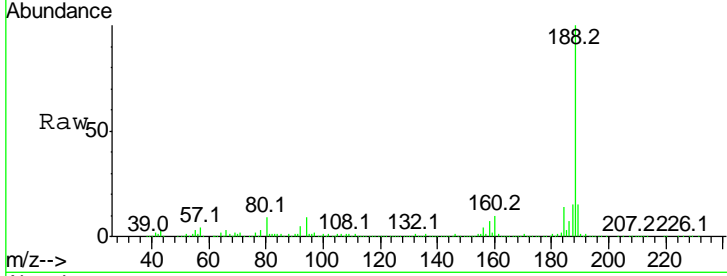




#63
 Phenanthrene-d10
 Concen: 20.00 ng
 RT: 11.29 min Scan# 823
 Delta R.T. 0.01 min
 Lab File: BF093404.D
 Acq: 6 Mar 2017 16:50

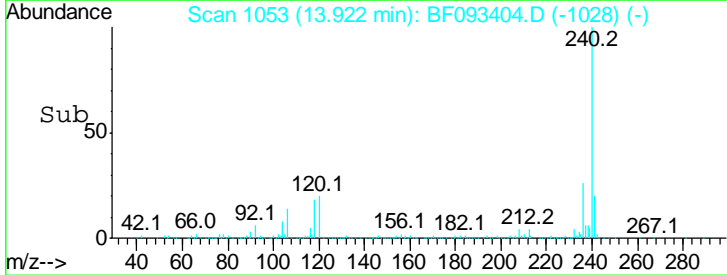
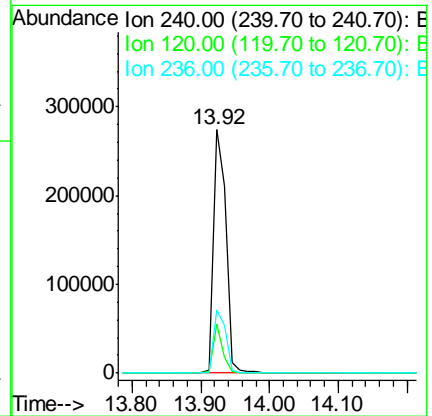
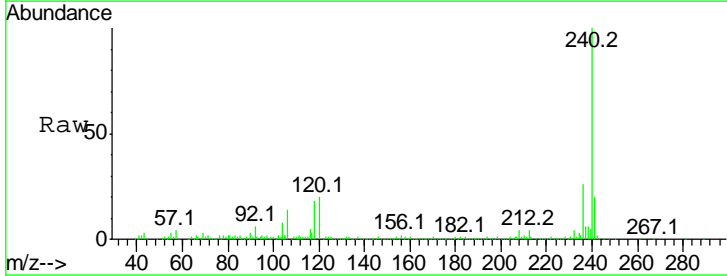
Instrument :
 BNA_F
 ClientSampled :
 IMPACT

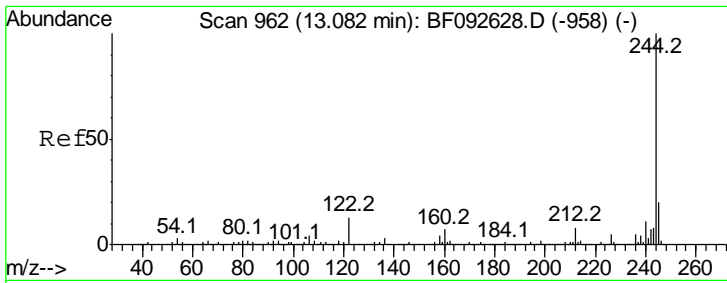
Tgt Ion	Resp	Lower	Upper
188	100		
94	9.1	10.0	15.0#
80	9.0	11.2	16.8#



#75
 Chrysene-d12
 Concen: 20.00 ng
 RT: 13.92 min Scan# 1053
 Delta R.T. -0.02 min
 Lab File: BF093404.D
 Acq: 6 Mar 2017 16:50

Tgt Ion	Resp	Lower	Upper
240	100		
120	20.0	12.9	19.3#
236	26.0	20.9	31.3



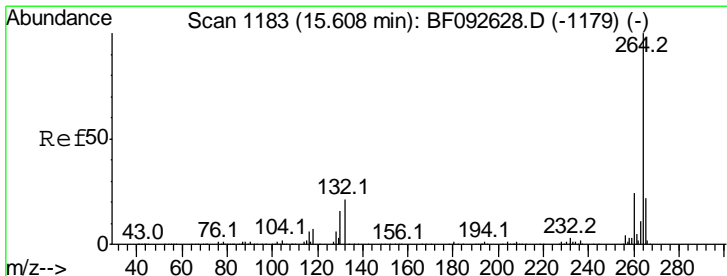
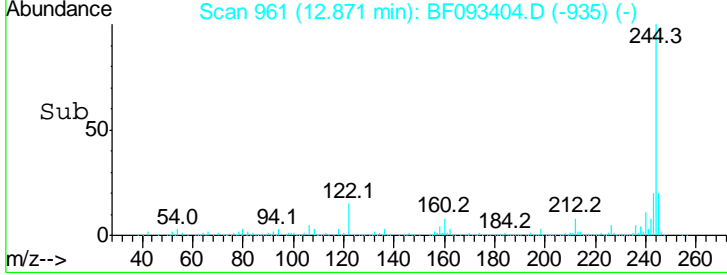
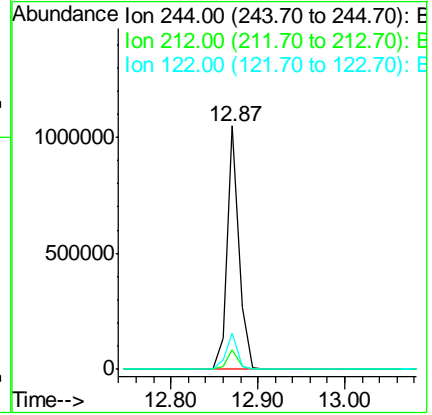
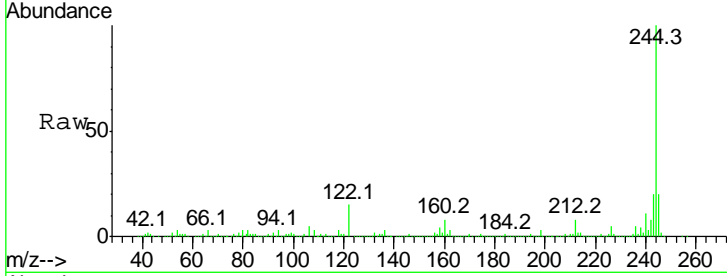


#78
 Terphenyl-d14
 Concen: 67.40 ng
 RT: 12.87 min Scan# 961
 Delta R.T. -0.01 min
 Lab File: BF093404.D
 Acq: 6 Mar 2017 16:50

Instrument :
 BNA_F
ClientSampled :
 IMPACT

Tgt Ion: 244 Resp: 1007697

Ion	Ratio	Lower	Upper
244	100		
212	7.9	6.2	9.2
122	14.8	11.4	17.2



#86
 Perylene-d12
 Concen: 20.00 ng
 RT: 15.34 min Scan# 1177
 Delta R.T. -0.01 min
 Lab File: BF093404.D
 Acq: 6 Mar 2017 16:50

Tgt Ion: 264 Resp: 340506

Ion	Ratio	Lower	Upper
264	100		
260	24.2	19.2	28.8
265	21.7	17.4	26.0

