

Data Path : Z:\HPCHEM1\BNA F\DATA\BF030917\
 Data File : BF093503.D
 Acq On : 10 Mar 2017 4:04
 Operator : SJ/MA
 Sample : I2132-02
 Misc :
 ALS Vial : 23 Sample Multiplier: 1

Instrument :
 BNA_F
 ClientSampleId :
 W-05

Quant Time: Mar 10 04:49:06 2017
 Quant Method : Z:\HPCHEM1\BNA F\METHODS\8270-BF030717.M
 Quant Title : ASP BNA STANDARDS FOR 5 POINT CALIBRATION
 QLast Update : Tue Mar 07 15:55:22 2017
 Response via : Initial Calibration

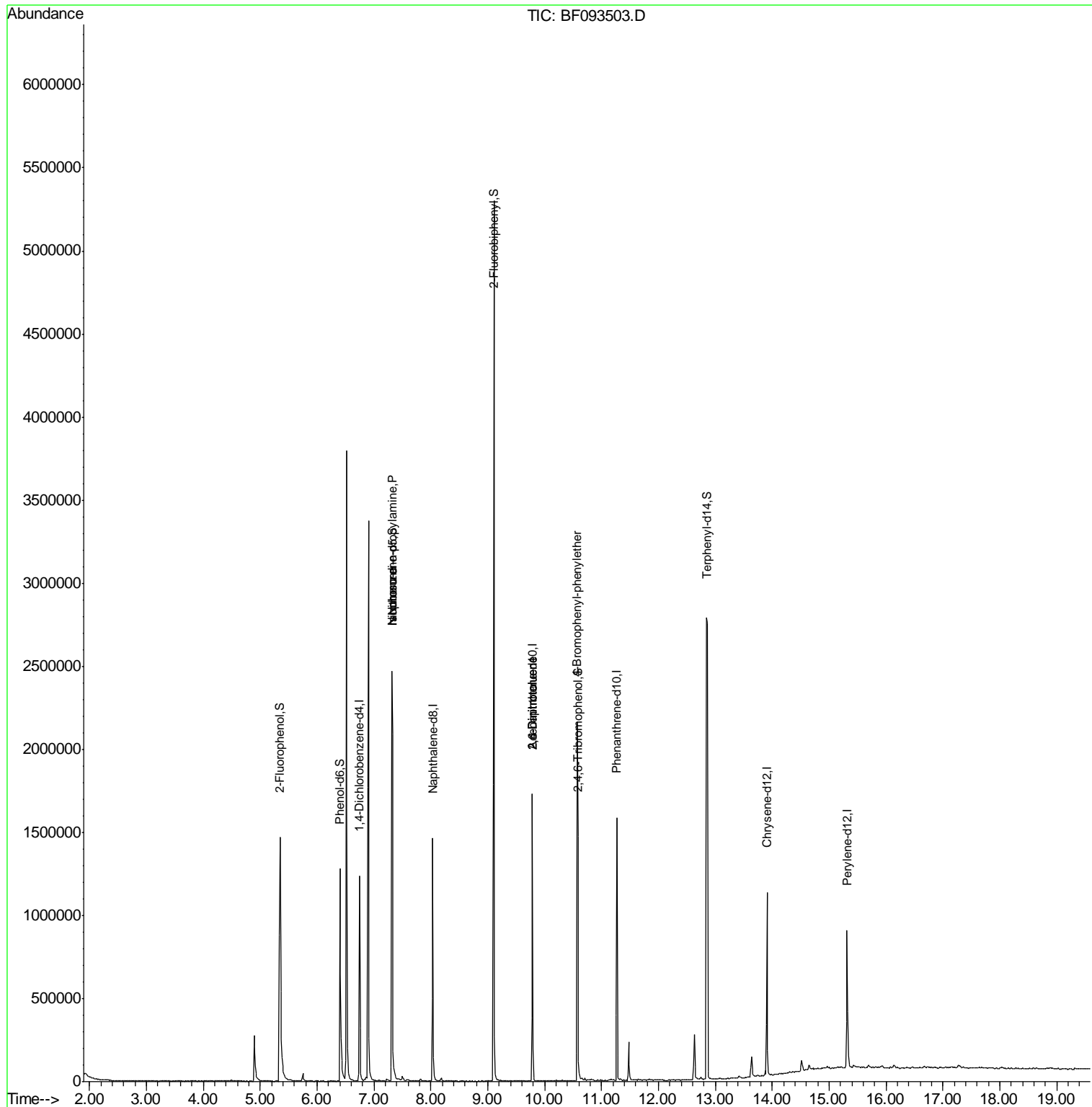
Internal Standards	R.T.	QIon	Response	Conc	Units	Dev(Min)
1) 1,4-Dichlorobenzene-d4	6.74	152	186602	20.00	ng	-0.02
21) Naphthalene-d8	8.04	136	709707	20.00	ng	-0.02
38) Acenaphthene-d10	9.78	164	335814	20.00	ng	-0.02
63) Phenanthrene-d10	11.27	188	573385	20.00	ng	-0.01
75) Chrysene-d12	13.91	240	395262	20.00	ng	-0.01
86) Perylene-d12	15.32	264	362385	20.00	ng	-0.01
System Monitoring Compounds						
5) 2-Fluorophenol	5.35	112	665937	59.40	ng	0.00
7) Phenol-d6	6.40	99	624834	44.19	ng	-0.01
23) Nitrobenzene-d5	7.32	82	1179362	92.20	ng	-0.02
41) 2,4,6-Tribromophenol	10.58	330	333364	152.37	ng	-0.01
44) 2-Fluorobiphenyl	9.11	172	1686342	93.40	ng	-0.02
78) Terphenyl-d14	12.86	244	1303895	85.77	ng	-0.01
Target Compounds						
9) Benzaldehyde	6.40	77	937	Below Cal	#	1
19) n-Nitroso-di-n-propylamine	7.32	70	157986	16.25	ng	# 84
25) Isophorone	7.32	82	1154305	44.75	ng	# 65
50) 2,6-Dinitrotoluene	9.78	165	40828	8.36	ng	# 31
56) 2,4-Dinitrotoluene	9.78	165	40831	6.80	ng	# 20
66) 4-Bromophenyl-phenylether	10.57	248	22251	3.67	ng	# 1

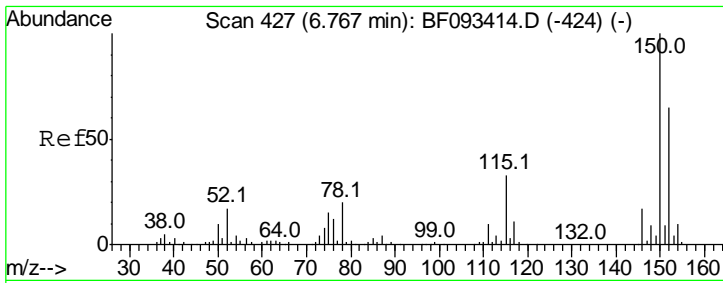
(#) = qualifier out of range (m) = manual integration (+) = signals summed

Data Path : Z:\HPCHEM1\BNA F\DATA\BF030917\
 Data File : BF093503.D
 Acq On : 10 Mar 2017 4:04
 Operator : SJ/MA
 Sample : I2132-02
 Misc :
 ALS Vial : 23 Sample Multiplier: 1

Instrument :
 BNA_F
 Client Sampled :
 W-05

Quant Time: Mar 10 04:49:06 2017
 Quant Method : Z:\HPCHEM1\BNA F\METHODS\8270-BF030717.M
 Quant Title : ASP BNA STANDARDS FOR 5 POINT CALIBRATION
 QLast Update : Tue Mar 07 15:55:22 2017
 Response via : Initial Calibration



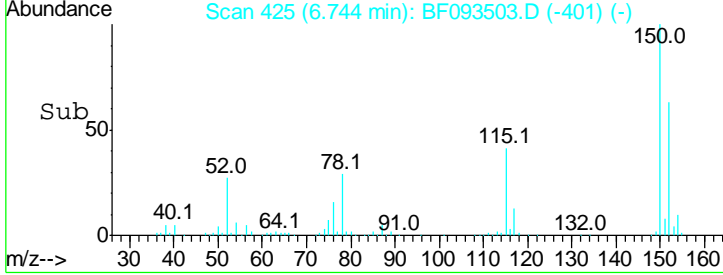
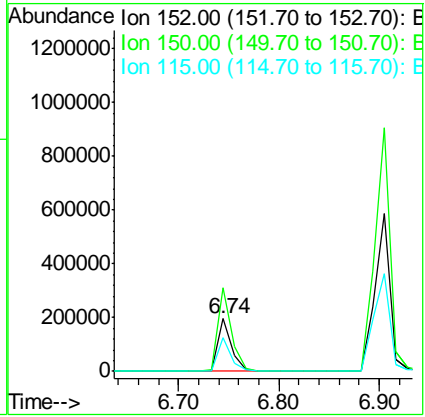
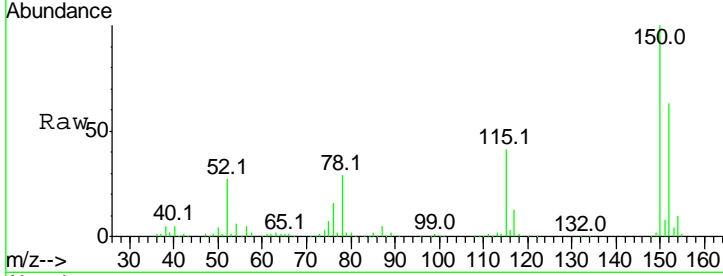


#1
 1,4-Dichlorobenzene-d4
 Concen: 20.00 ng
 RT: 6.74 min Scan# 425
 Delta R.T. -0.02 min
 Lab File: BF093503.D
 Acq: 10 Mar 2017 4:04

Instrument :
 BNA_F
ClientSampled :
 W-05

Tgt Ion:152 Resp: 186602

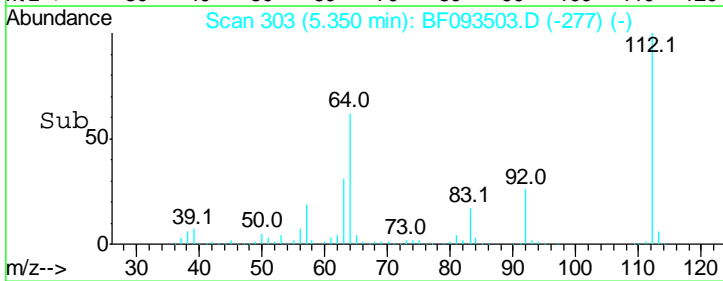
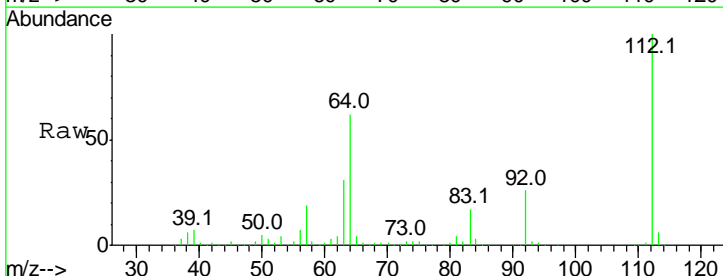
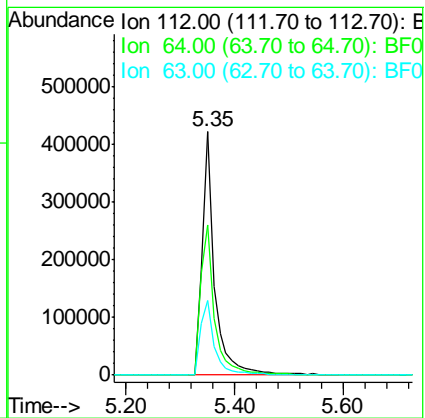
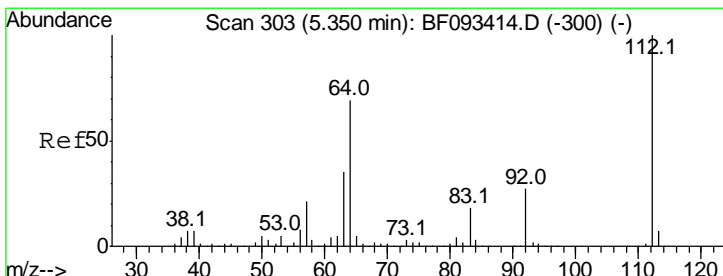
Ion	Ratio	Lower	Upper
152	100		
150	159.3	124.9	187.3
115	64.6	46.0	69.0

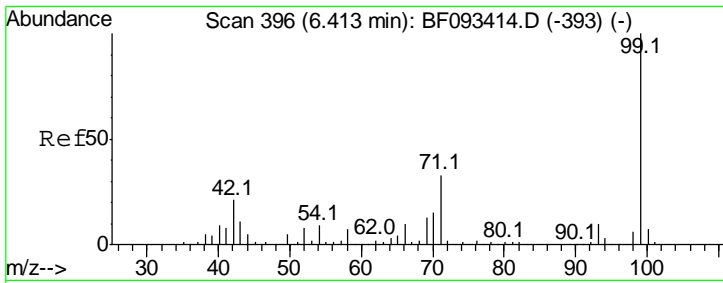


#5
 2-Fluorophenol
 Concen: 59.40 ng
 RT: 5.35 min Scan# 303
 Delta R.T. -0.00 min
 Lab File: BF093503.D
 Acq: 10 Mar 2017 4:04

Tgt Ion:112 Resp: 665937

Ion	Ratio	Lower	Upper
112	100		
64	61.8	46.1	69.1
63	30.8	23.8	35.6

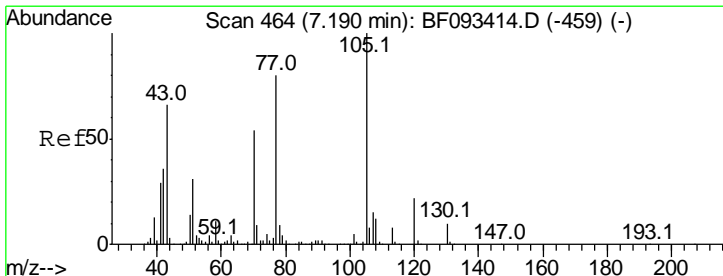
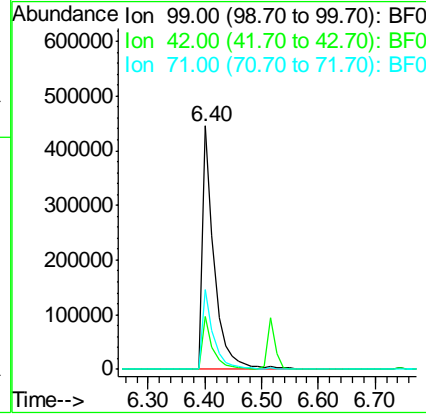
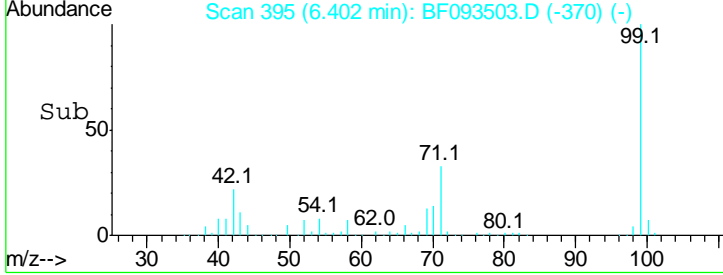
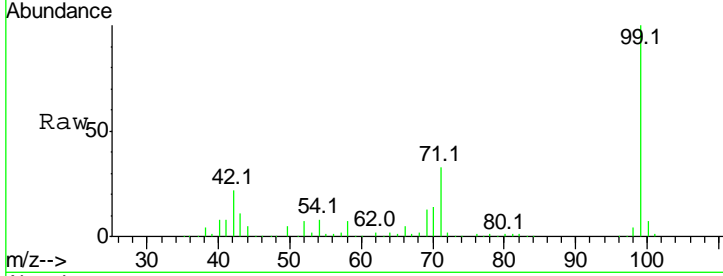




#7
 Phenol-d6
 Concen: 44.19 ng
 RT: 6.40 min Scan# 395
 Delta R.T. -0.01 min
 Lab File: BF093503.D
 Acq: 10 Mar 2017 4:04

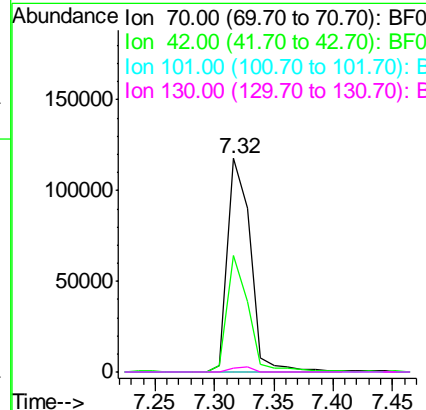
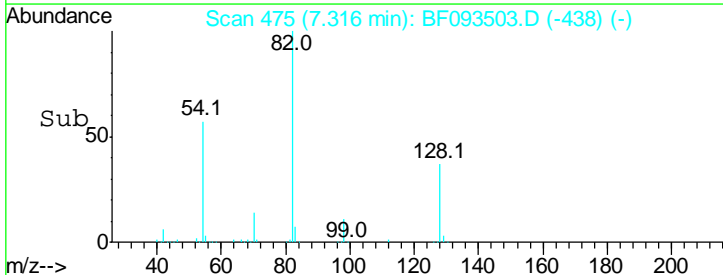
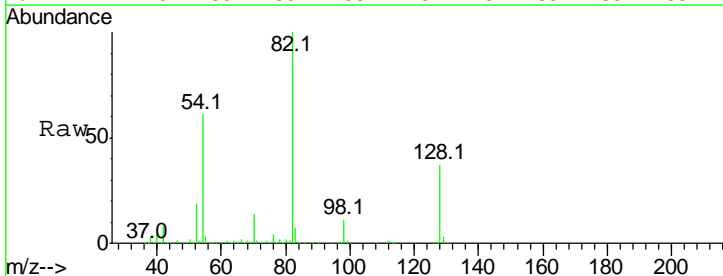
Instrument :
 BNA_F
 ClientSampled :
 W-05

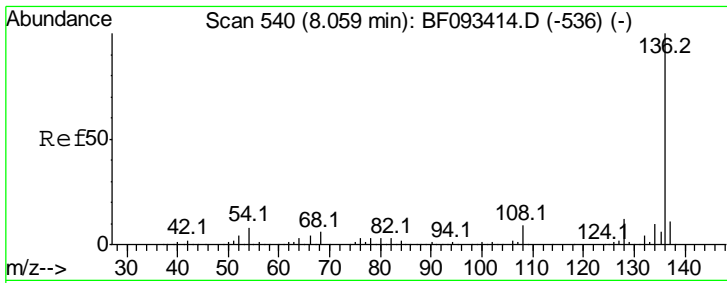
Tgt Ion	Resp	Lower	Upper
99	100		
42	21.7	15.6	23.4
71	32.6	27.5	41.3



#19
 n-Nitroso-di-n-propylamine
 Concen: 16.25 ng
 RT: 7.32 min Scan# 475
 Delta R.T. 0.13 min
 Lab File: BF093503.D
 Acq: 10 Mar 2017 4:04

Tgt Ion	Resp	Lower	Upper
70	100		
42	54.4	49.4	74.0
101	0.0	7.4	11.2#
130	2.0	14.2	21.4#



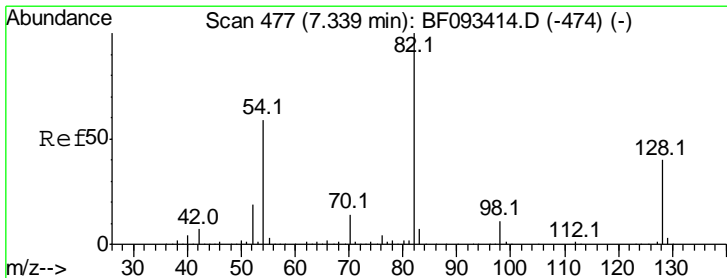
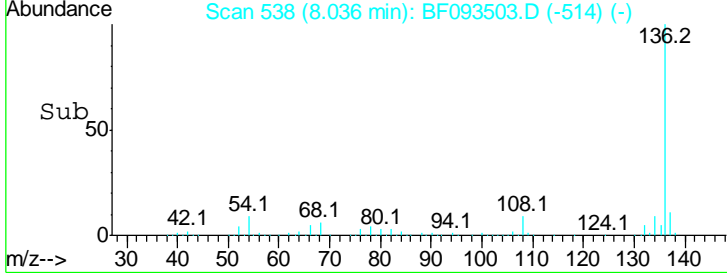
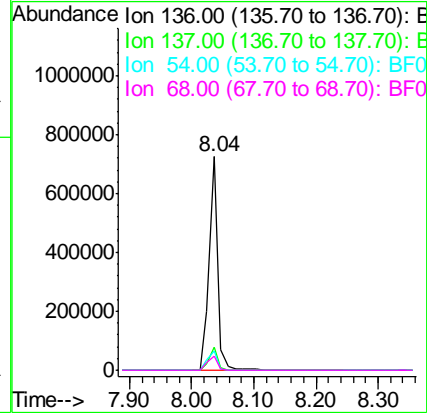
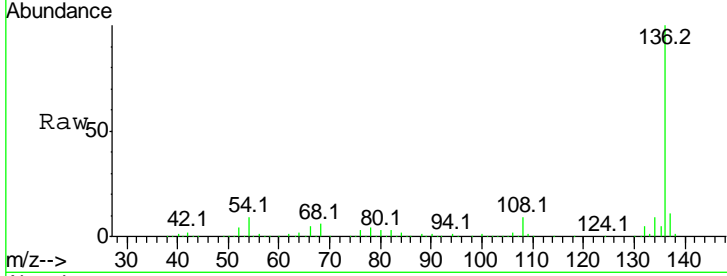


#21
 Naphthalene-d8
 Concen: 20.00 ng
 RT: 8.04 min Scan# 538
 Delta R.T. -0.02 min
 Lab File: BF093503.D
 Acq: 10 Mar 2017 4:04

Instrument :
 BNA_F
 ClientSampled :
 W-05

Tgt Ion: 136 Resp: 709707

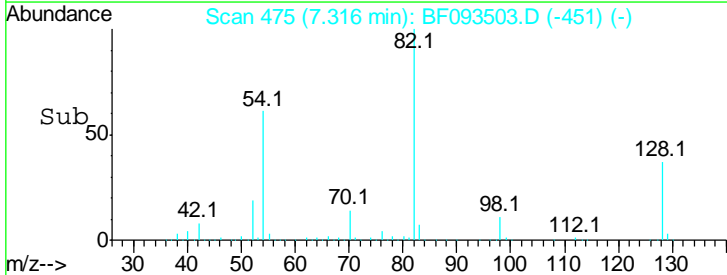
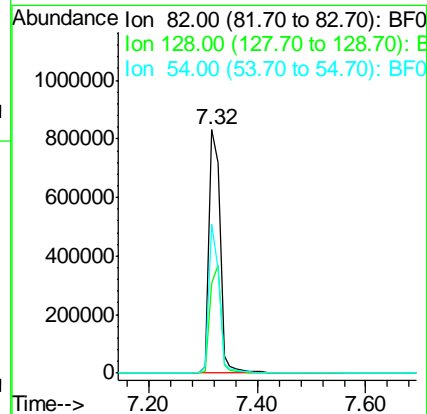
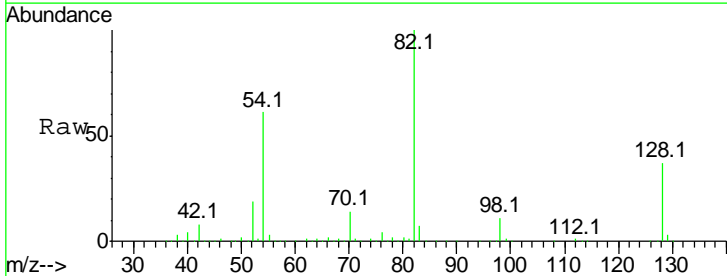
Ion	Ratio	Lower	Upper
136	100		
137	10.6	8.4	12.6
54	8.8	4.5	6.7#
68	6.5	3.6	5.4#

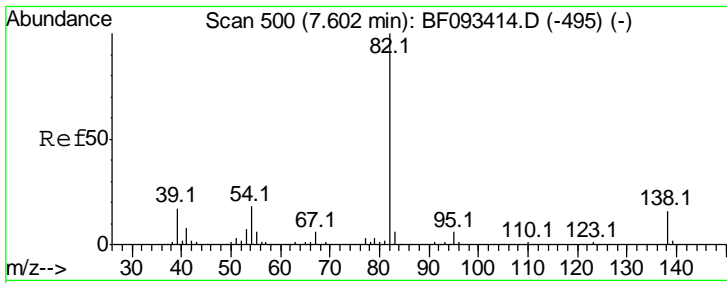


#23
 Nitrobenzene-d5
 Concen: 92.20 ng
 RT: 7.32 min Scan# 475
 Delta R.T. -0.02 min
 Lab File: BF093503.D
 Acq: 10 Mar 2017 4:04

Tgt Ion: 82 Resp: 1179362

Ion	Ratio	Lower	Upper
82	100		
128	37.0	34.6	52.0
54	60.9	39.5	59.3#

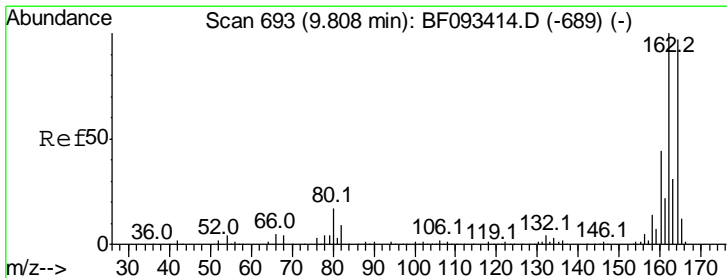
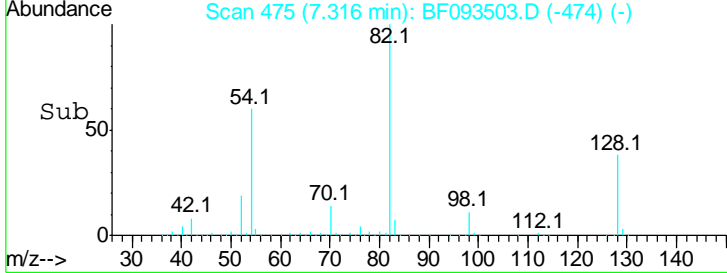
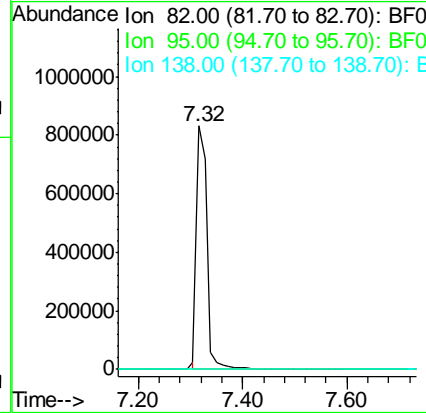
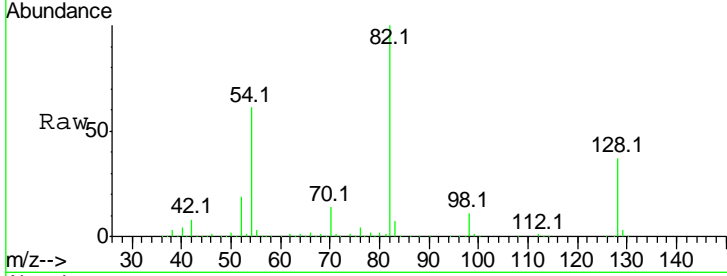




#25
 Isophorone
 Concen: 44.75 ng
 RT: 7.32 min Scan# 475
 Delta R.T. -0.29 min
 Lab File: BF093503.D
 Acq: 10 Mar 2017 4:04

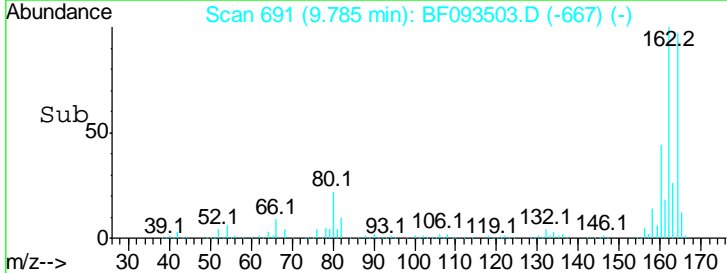
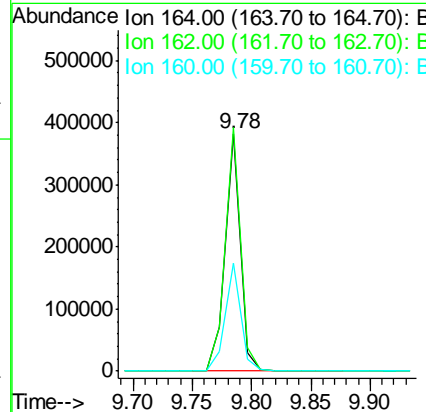
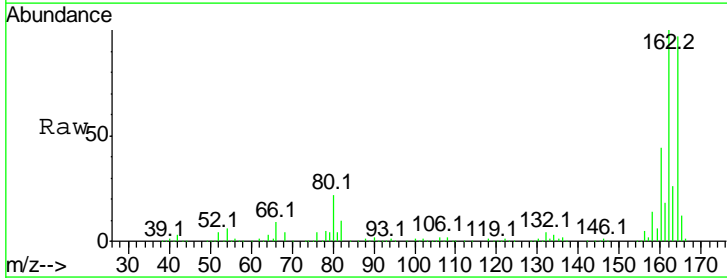
Instrument :
 BNA_F
 ClientSampled :
 W-05

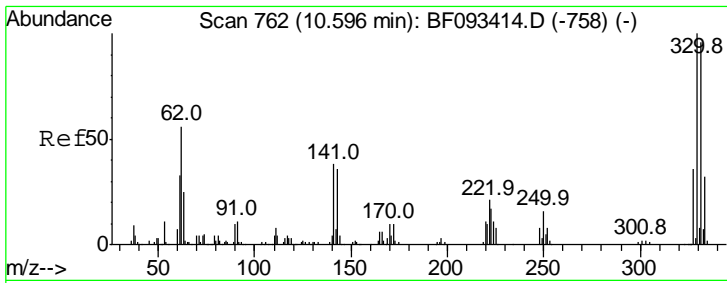
Tgt Ion	Resp	Lower	Upper
82	1154305		
82	100		
95	0.0	5.6	8.4#
138	0.0	14.6	22.0#



#38
 Acenaphthene-d10
 Concen: 20.00 ng
 RT: 9.78 min Scan# 691
 Delta R.T. -0.02 min
 Lab File: BF093503.D
 Acq: 10 Mar 2017 4:04

Tgt Ion	Resp	Lower	Upper
164	335814		
164	100		
162	102.6	80.2	120.2
160	45.4	36.9	55.3

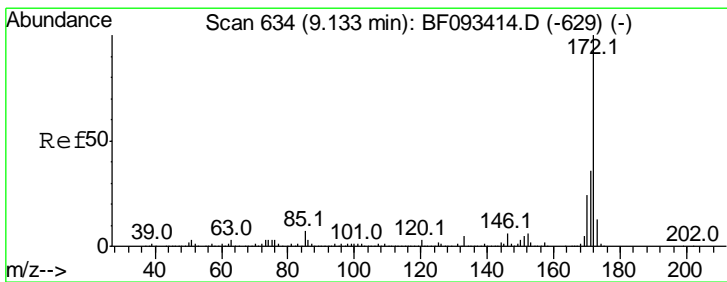
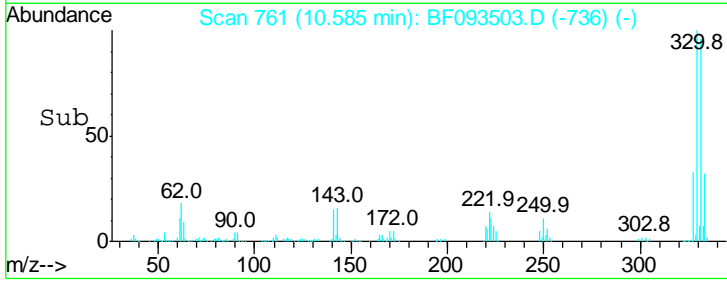
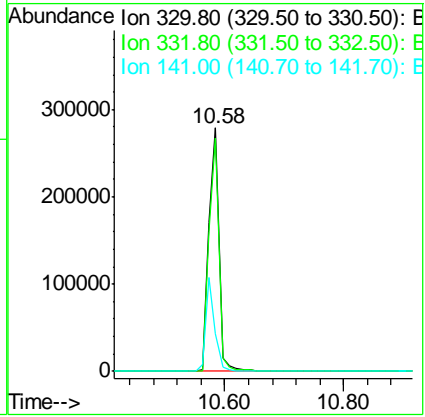
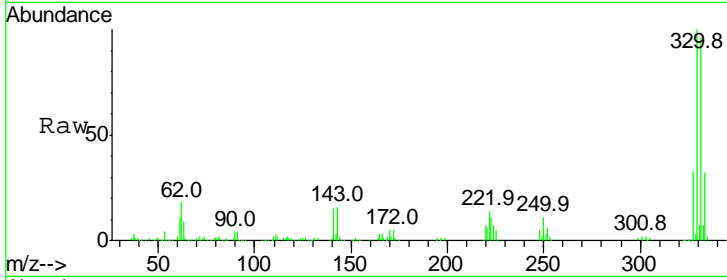




#41
 2,4,6-Tribromophenol
 Concen: 152.37 ng
 RT: 10.58 min Scan# 761
 Delta R.T. -0.01 min
 Lab File: BF093503.D
 Acq: 10 Mar 2017 4:04

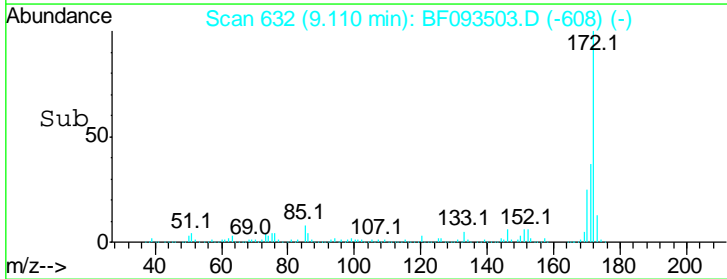
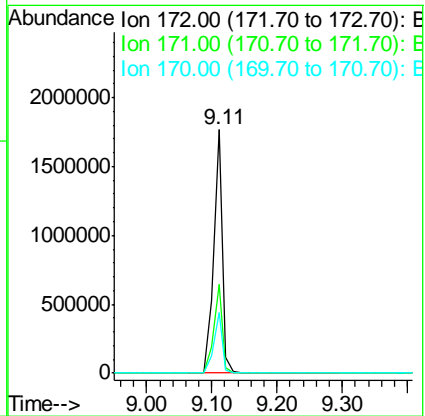
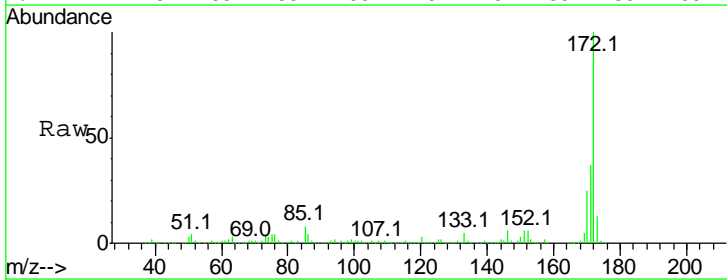
Instrument :
 BNA_F
 ClientSampled :
 W-05

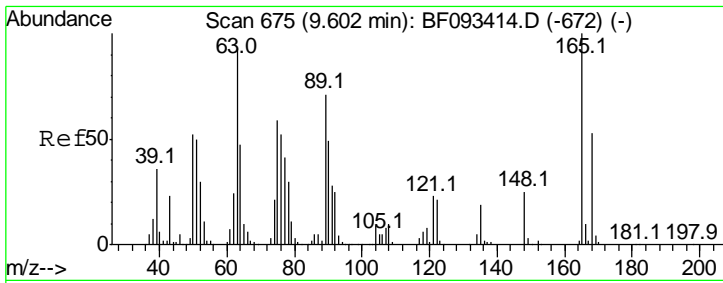
Tgt Ion	Resp	Lower	Upper
330	100		
332	94.9	77.4	116.2
141	35.0	34.1	51.1



#44
 2-Fluorobiphenyl
 Concen: 93.40 ng
 RT: 9.11 min Scan# 632
 Delta R.T. -0.02 min
 Lab File: BF093503.D
 Acq: 10 Mar 2017 4:04

Tgt Ion	Resp	Lower	Upper
172	100		
171	36.6	29.4	44.0
170	24.7	20.2	30.4

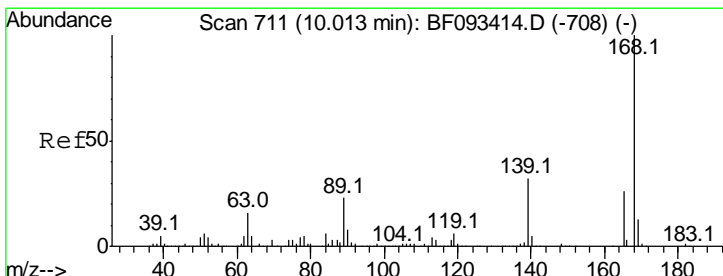
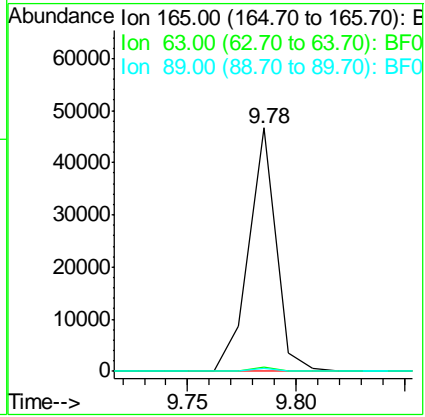
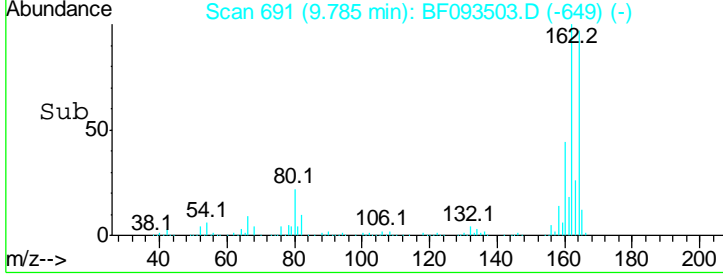
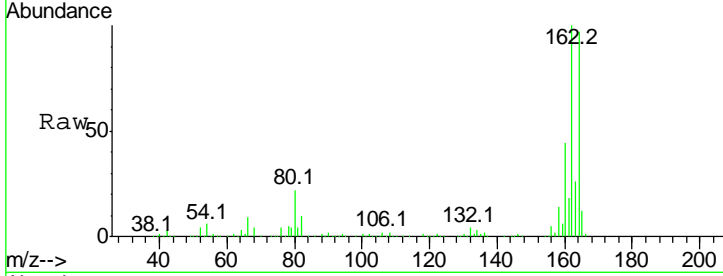




#50
 2,6-Dinitrotoluene
 Concen: 8.36 ng
 RT: 9.78 min Scan# 691
 Delta R.T. 0.18 min
 Lab File: BF093503.D
 Acq: 10 Mar 2017 4:04

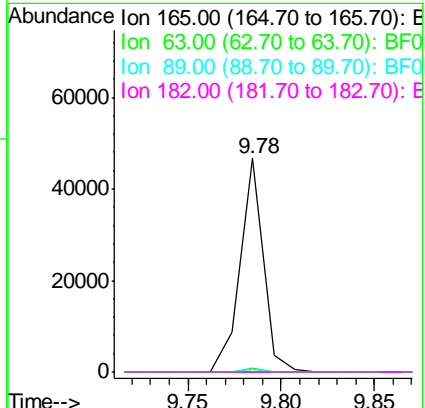
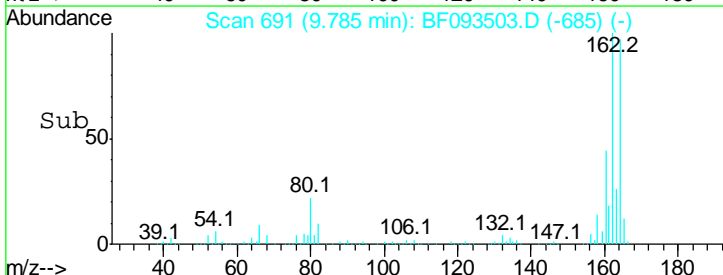
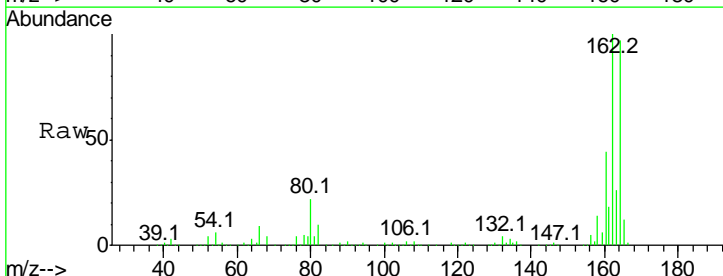
Instrument :
 BNA_F
 ClientSampled :
 W-05

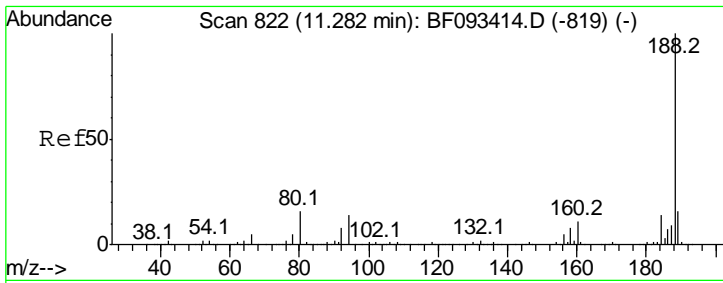
Tgt Ion	Resp	Lower	Upper
165	100		
63	1.7	36.2	54.4#
89	1.4	40.2	60.4#



#56
 2,4-Dinitrotoluene
 Concen: 6.80 ng
 RT: 9.78 min Scan# 691
 Delta R.T. -0.23 min
 Lab File: BF093503.D
 Acq: 10 Mar 2017 4:04

Tgt Ion	Resp	Lower	Upper
165	100		
63	1.7	40.2	60.4#
89	1.4	62.5	93.7#
182	0.0	1.8	2.8#

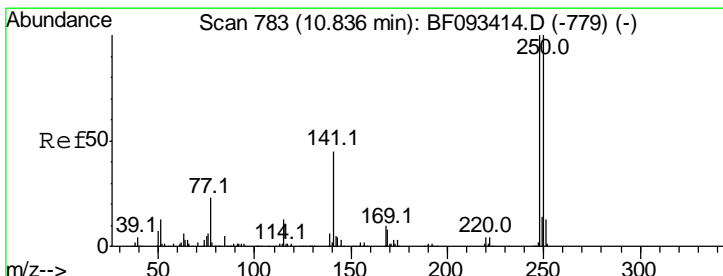
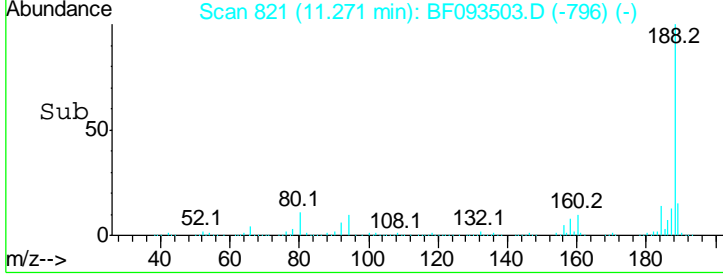
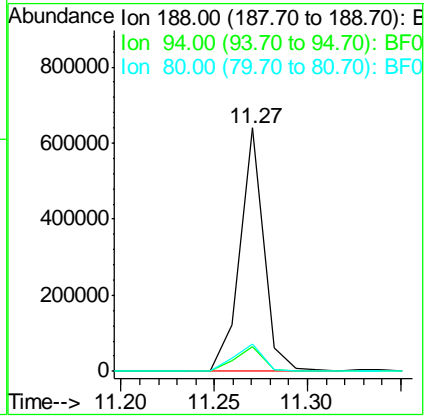
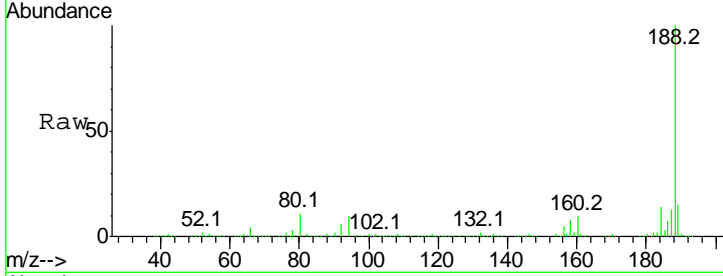




#63
 Phenanthrene-d10
 Concen: 20.00 ng
 RT: 11.27 min Scan# 821
 Delta R.T. -0.01 min
 Lab File: BF093503.D
 Acq: 10 Mar 2017 4:04

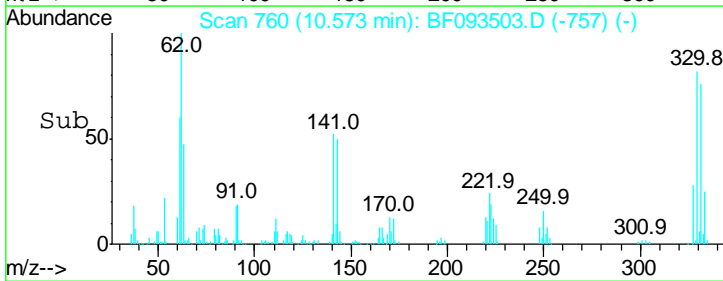
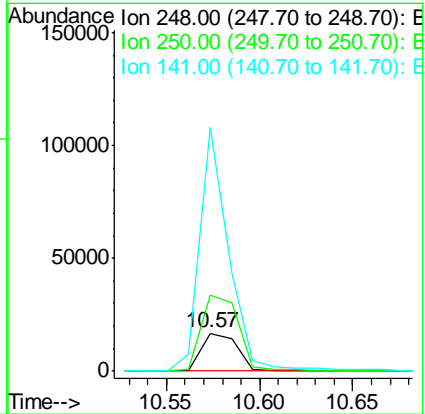
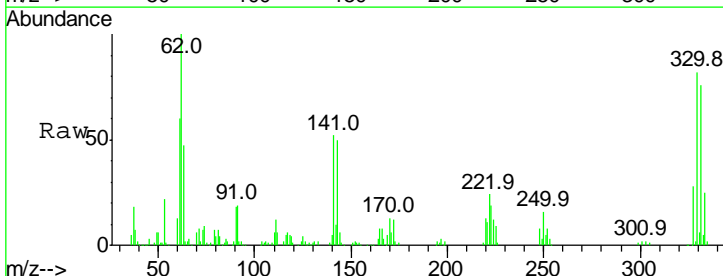
Instrument :
 BNA_F
 ClientSampled :
 W-05

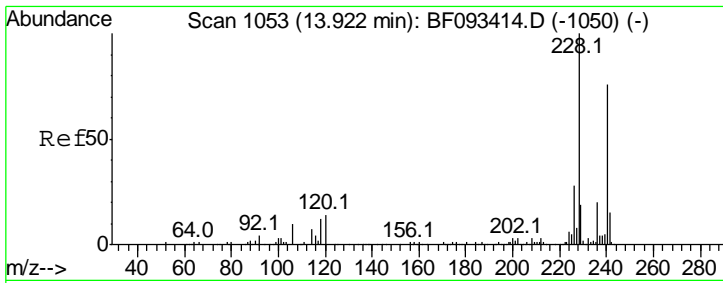
Tgt Ion	Resp	Lower	Upper
188	100		
94	10.1	10.0	15.0
80	11.0	11.2	16.8#



#66
 4-Bromophenyl-phenylether
 Concen: 3.67 ng
 RT: 10.57 min Scan# 760
 Delta R.T. -0.26 min
 Lab File: BF093503.D
 Acq: 10 Mar 2017 4:04

Tgt Ion	Resp	Lower	Upper
248	100		
250	203.2	76.9	115.3#
141	647.5	68.2	102.4#

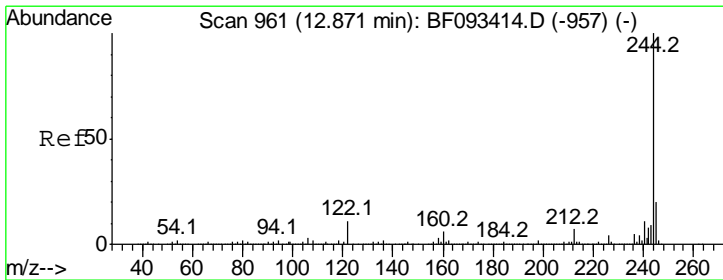
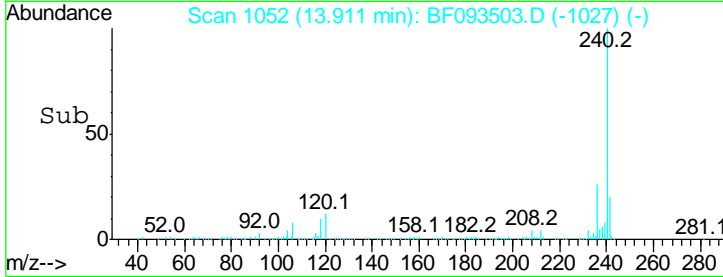
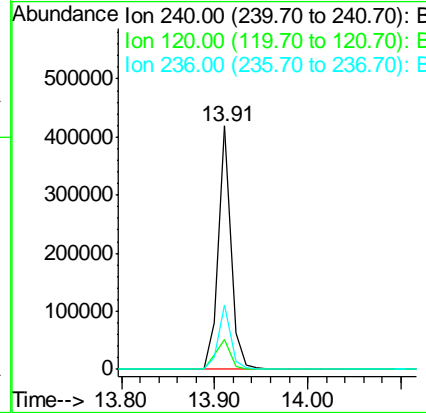
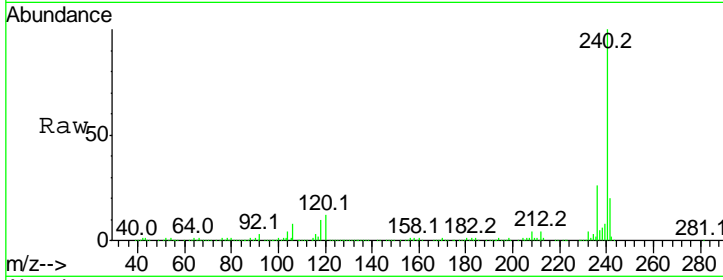




#75
 Chrysene-d12
 Concen: 20.00 ng
 RT: 13.91 min Scan# 1052
 Delta R.T. -0.01 min
 Lab File: BF093503.D
 Acq: 10 Mar 2017 4:04

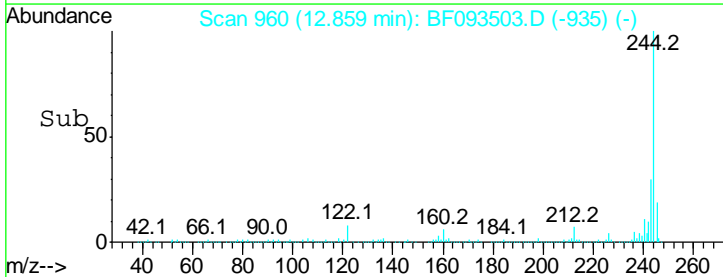
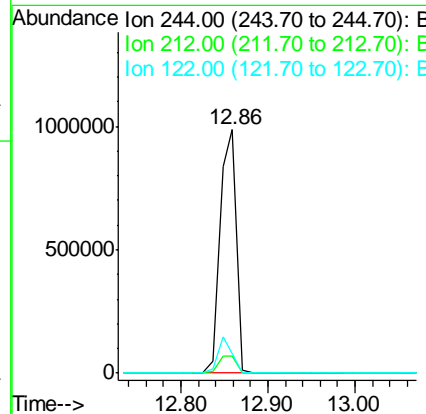
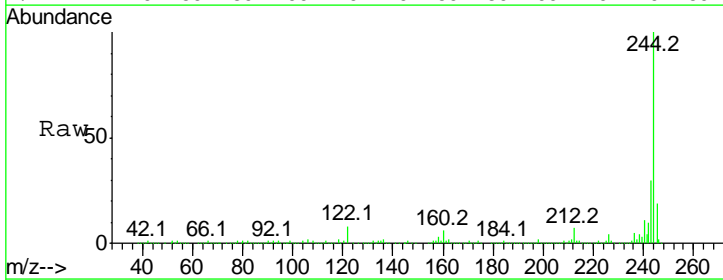
Instrument :
 BNA_F
 ClientSampled :
 W-05

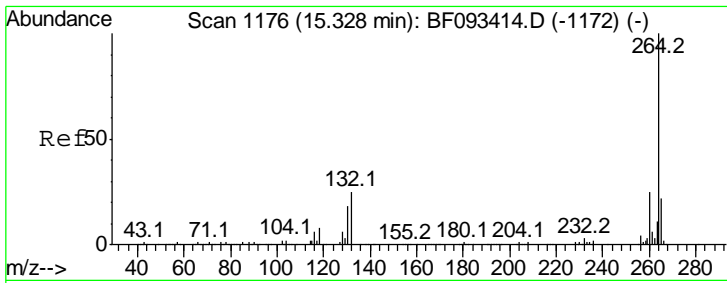
Tgt Ion	Resp	Lower	Upper
240	100		
120	12.0	12.9	19.3#
236	26.2	20.9	31.3



#78
 Terphenyl-d14
 Concen: 85.77 ng
 RT: 12.86 min Scan# 960
 Delta R.T. -0.01 min
 Lab File: BF093503.D
 Acq: 10 Mar 2017 4:04

Tgt Ion	Resp	Lower	Upper
244	100		
212	6.8	6.2	9.2
122	7.8	11.4	17.2#





#86
 Perylene-d12
 Concen: 20.00 ng
 RT: 15.32 min Scan# 1175
 Delta R.T. -0.01 min
 Lab File: BF093503.D
 Acq: 10 Mar 2017 4:04

Instrument :
 BNA_F
 ClientSampled :
 W-05

Tot Ion: 264 Resp: 362385

Ion	Ratio	Lower	Upper
264	100		
260	23.9	19.2	28.8
265	21.6	17.4	26.0

