

Data Path : Z:\HPCHEM1\BNA F\DATA\BF031017\
 Data File : BF093531.D
 Acq On : 10 Mar 2017 19:28
 Operator : SJ/MA
 Sample : I2172-23
 Misc :
 ALS Vial : 13 Sample Multiplier: 1

Instrument :
 BNA_F
 ClientSampleId :
 D-44

Quant Time: Mar 11 00:05:22 2017
 Quant Method : Z:\HPCHEM1\BNA F\METHODS\8270-BF030717.M
 Quant Title : ASP BNA STANDARDS FOR 5 POINT CALIBRATION
 QLast Update : Tue Mar 07 15:55:22 2017
 Response via : Initial Calibration

Internal Standards	R.T.	QIon	Response	Conc	Units	Dev(Min)
1) 1,4-Dichlorobenzene-d4	6.74	152	183463	20.00	ng	-0.02
21) Naphthalene-d8	8.02	136	729178	20.00	ng	-0.03
38) Acenaphthene-d10	9.77	164	350996	20.00	ng	-0.03
63) Phenanthrene-d10	11.26	188	643182	20.00	ng	-0.02
75) Chrysene-d12	13.90	240	527321	20.00	ng	-0.02
86) Perylene-d12	15.31	264	395853	20.00	ng	-0.02
System Monitoring Compounds						
5) 2-Fluorophenol	5.36	112	1461506	132.58	ng	0.01
7) Phenol-d6	6.41	99	1828176	131.52	ng	0.00
23) Nitrobenzene-d5	7.32	82	1252044	95.27	ng	-0.02
41) 2,4,6-Tribromophenol	10.57	330	360912	157.82	ng	-0.02
44) 2-Fluorobiphenyl	9.10	172	1713956	90.83	ng	-0.03
78) Terphenyl-d14	12.85	244	1656629	81.68	ng	-0.02

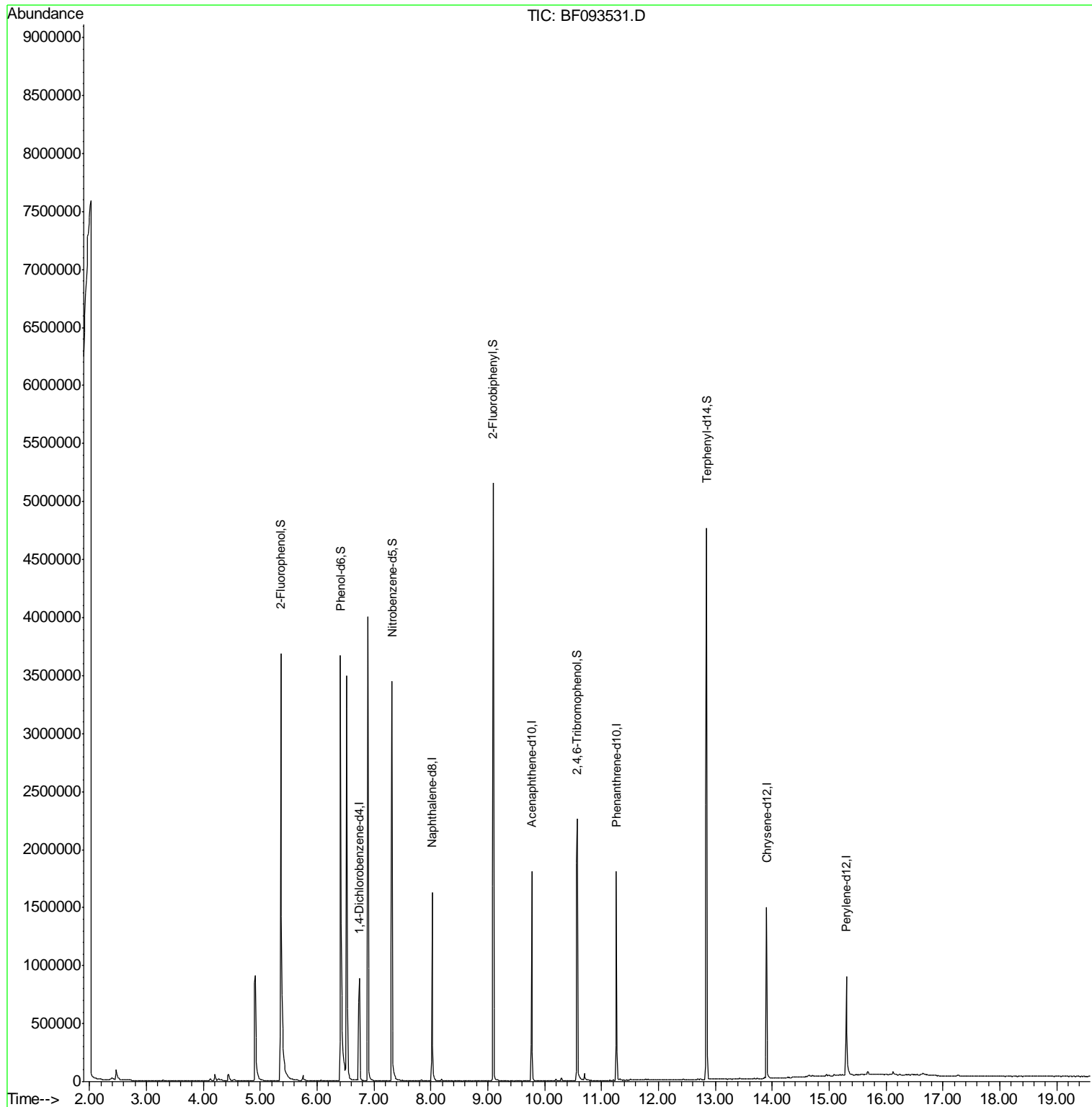
Target Compounds Qvalue

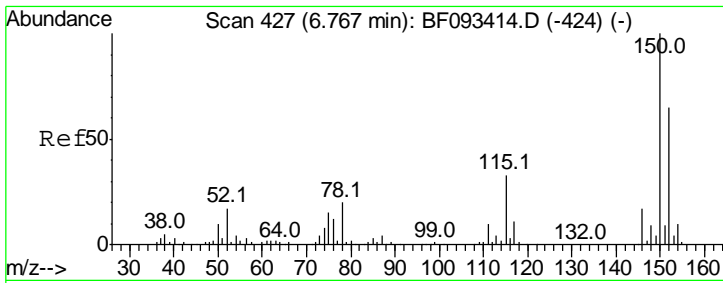
(#) = qualifier out of range (m) = manual integration (+) = signals summed

Data Path : Z:\HPCHEM1\BNA F\DATA\BF031017\
 Data File : BF093531.D
 Acq On : 10 Mar 2017 19:28
 Operator : SJ/MA
 Sample : I2172-23
 Misc :
 ALS Vial : 13 Sample Multiplier: 1

Instrument :
 BNA_F
 ClientSampleId :
 D-44

Quant Time: Mar 11 00:05:22 2017
 Quant Method : Z:\HPCHEM1\BNA F\METHODS\8270-BF030717.M
 Quant Title : ASP BNA STANDARDS FOR 5 POINT CALIBRATION
 QLast Update : Tue Mar 07 15:55:22 2017
 Response via : Initial Calibration



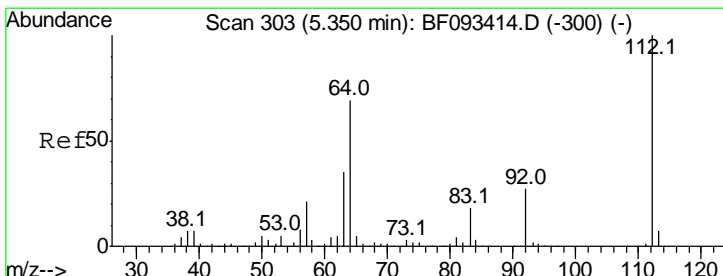
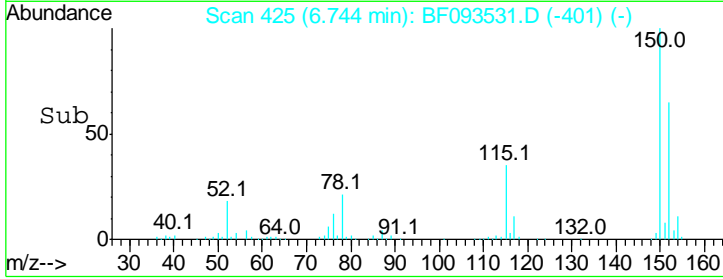
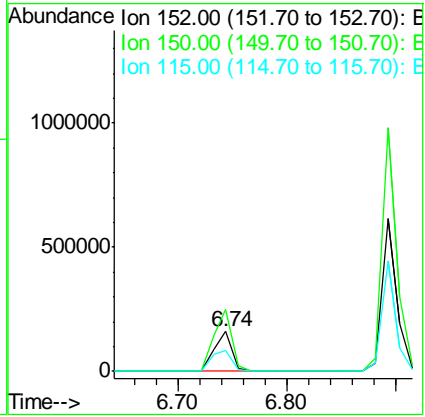
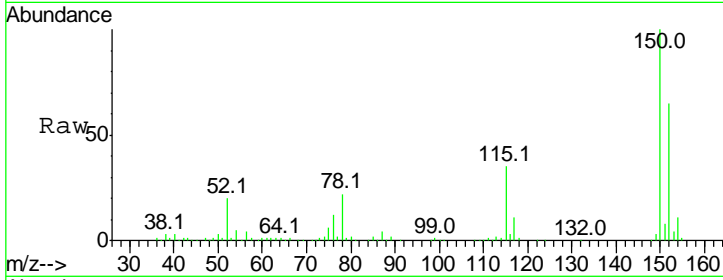


#1
 1,4-Dichlorobenzene-d4
 Concen: 20.00 ng
 RT: 6.74 min Scan# 425
 Delta R.T. -0.02 min
 Lab File: BF093531.D
 Acq: 10 Mar 2017 19:28

Instrument :
 BNA_F
ClientSampled :
 D-44

Tot Ion:152 Resp: 183463

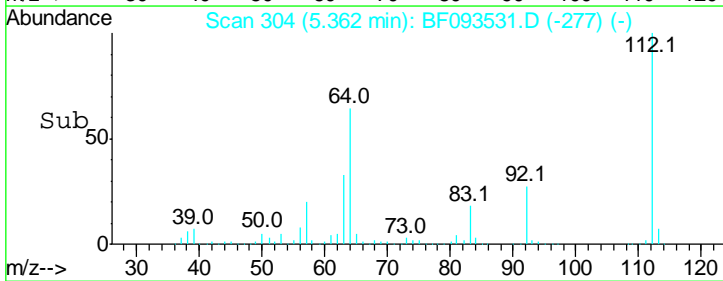
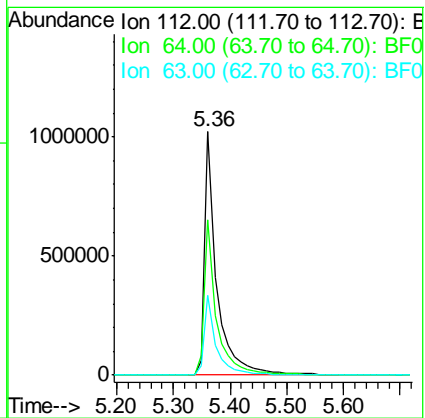
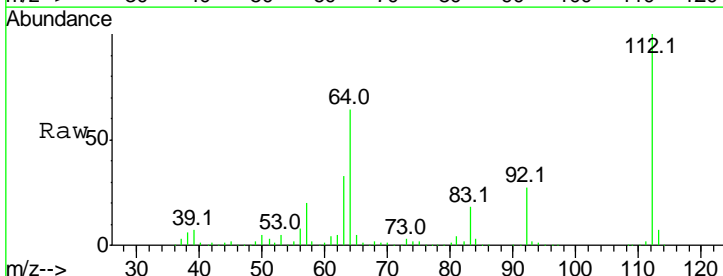
Ion	Ratio	Lower	Upper
152	100		
150	154.5	124.9	187.3
115	53.6	46.0	69.0

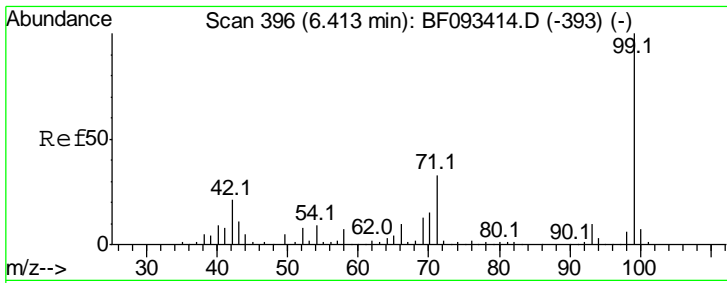


#5
 2-Fluorophenol
 Concen: 132.58 ng
 RT: 5.36 min Scan# 304
 Delta R.T. 0.01 min
 Lab File: BF093531.D
 Acq: 10 Mar 2017 19:28

Tgt Ion:112 Resp: 1461506

Ion	Ratio	Lower	Upper
112	100		
64	64.0	46.1	69.1
63	32.7	23.8	35.6



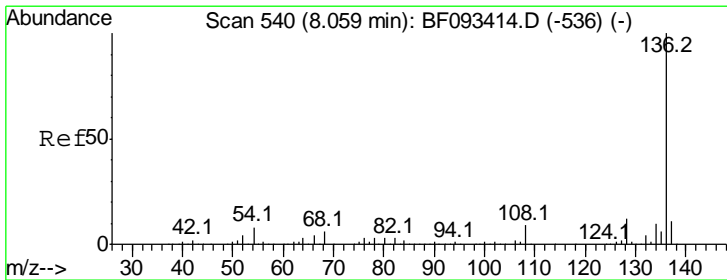
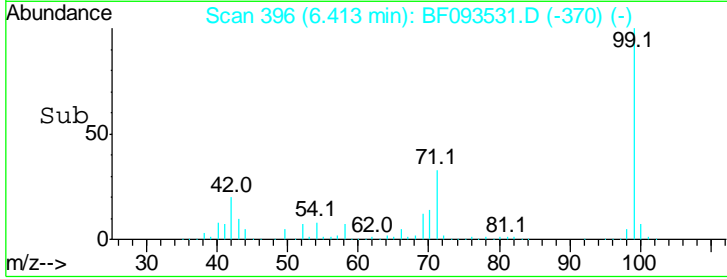
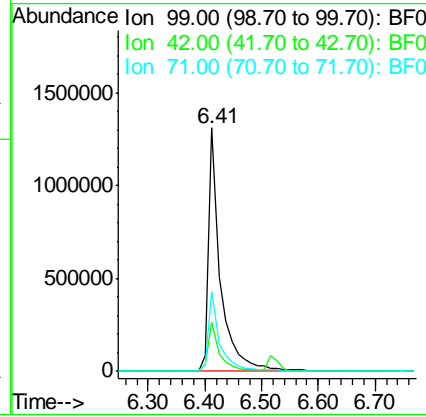
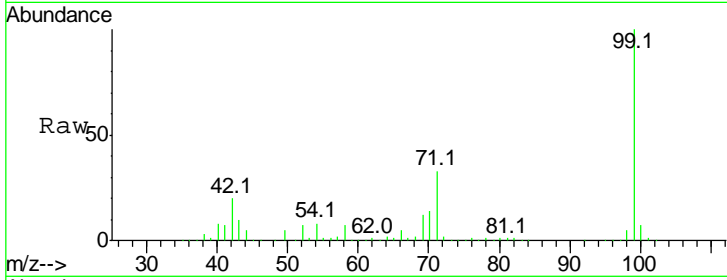


#7
 Phenol-d6
 Concen: 131.52 ng
 RT: 6.41 min Scan# 396
 Delta R.T. -0.00 min
 Lab File: BF093531.D
 Acq: 10 Mar 2017 19:28

Instrument :
 BNA_F
 ClientSampled :
 D-44

Tot Ion: 99 Resp: 1828176

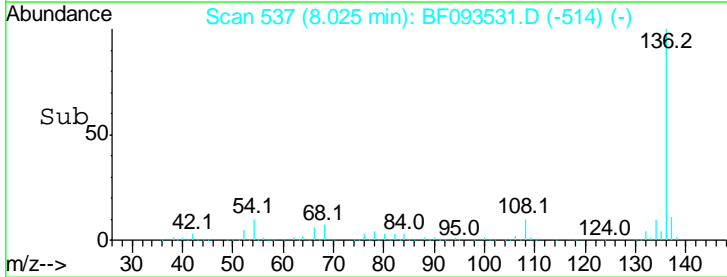
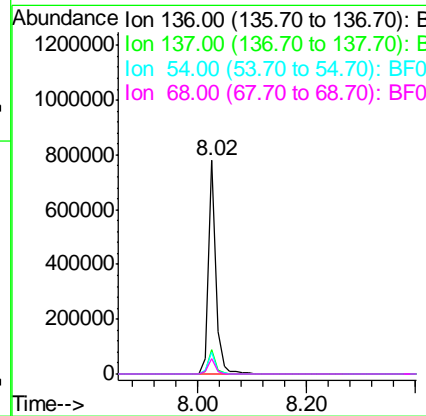
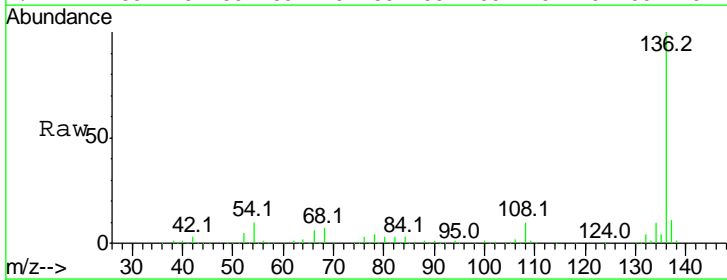
Ion	Ratio	Lower	Upper
99	100		
42	20.1	15.6	23.4
71	33.0	27.5	41.3

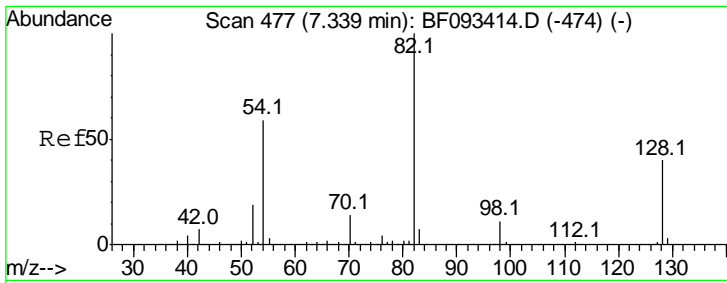


#21
 Naphthalene-d8
 Concen: 20.00 ng
 RT: 8.02 min Scan# 537
 Delta R.T. -0.03 min
 Lab File: BF093531.D
 Acq: 10 Mar 2017 19:28

Tgt Ion: 136 Resp: 729178

Ion	Ratio	Lower	Upper
136	100		
137	11.4	8.4	12.6
54	10.3	4.5	6.7#
68	7.2	3.6	5.4#

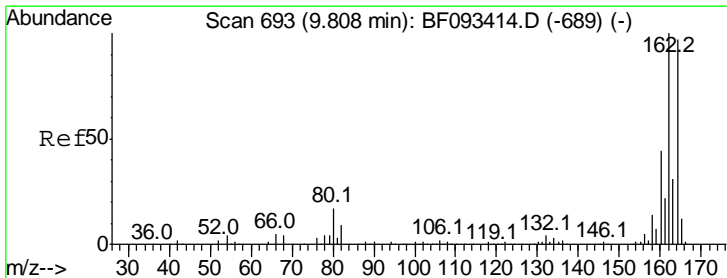
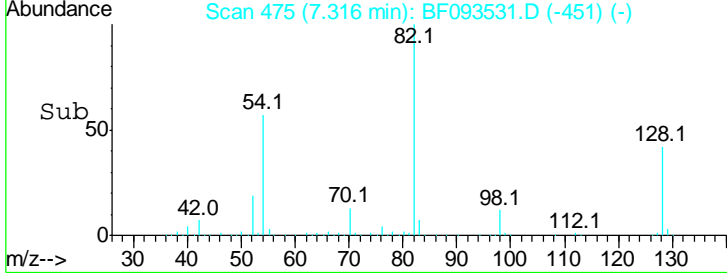
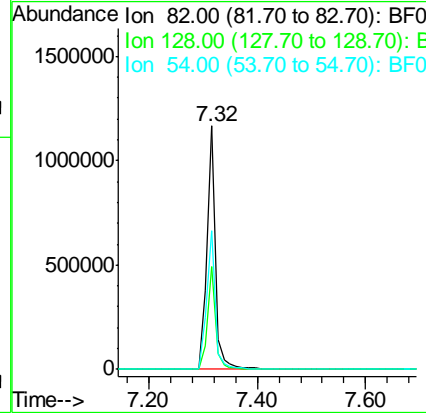
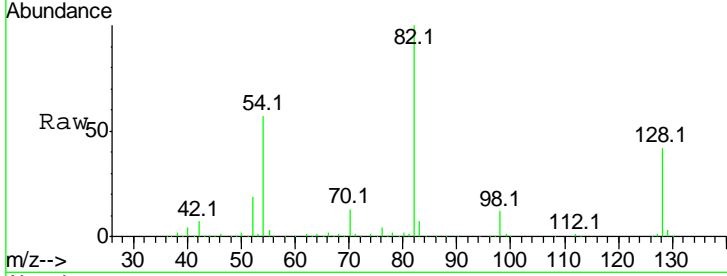




#23
 Nitrobenzene-d5
 Concen: 95.27 ng
 RT: 7.32 min Scan# 475
 Delta R.T. -0.02 min
 Lab File: BF093531.D
 Acq: 10 Mar 2017 19:28

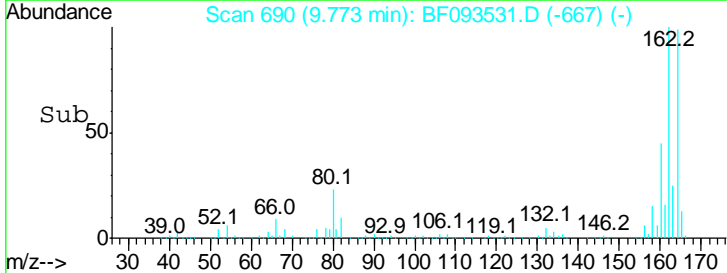
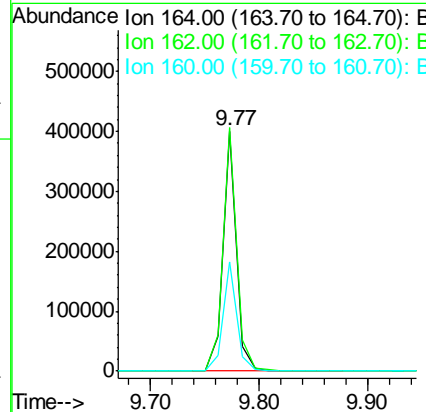
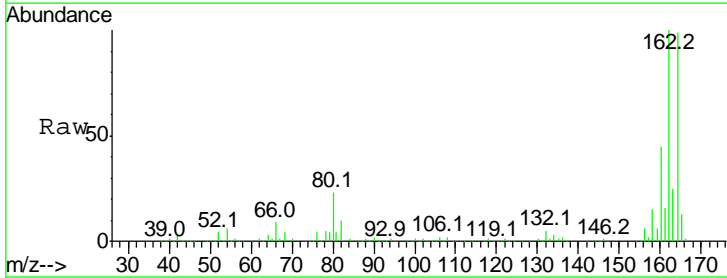
Instrument :
 BNA_F
 ClientSampleID :
 D-44

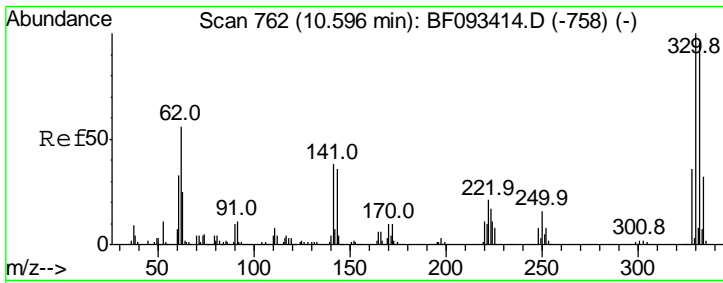
Tgt Ion	Resp	Lower	Upper
82	100		
128	42.4	34.6	52.0
54	57.0	39.5	59.3



#38
 Acenaphthene-d10
 Concen: 20.00 ng
 RT: 9.77 min Scan# 690
 Delta R.T. -0.03 min
 Lab File: BF093531.D
 Acq: 10 Mar 2017 19:28

Tgt Ion	Resp	Lower	Upper
164	100		
162	101.3	80.2	120.2
160	45.6	36.9	55.3

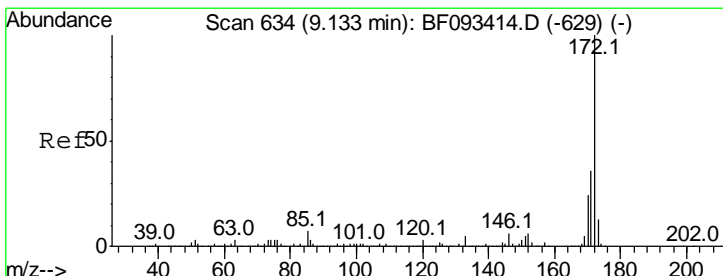
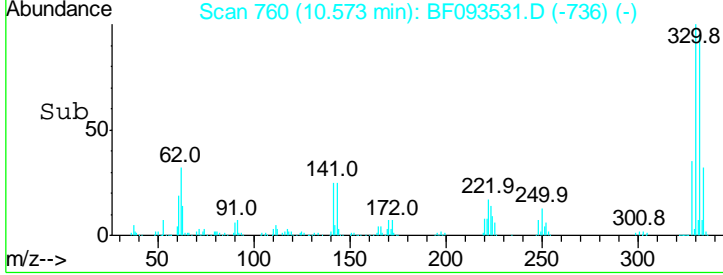
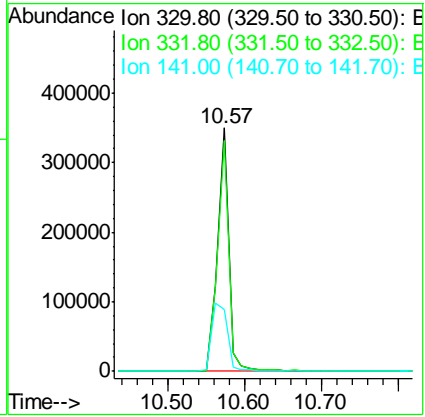
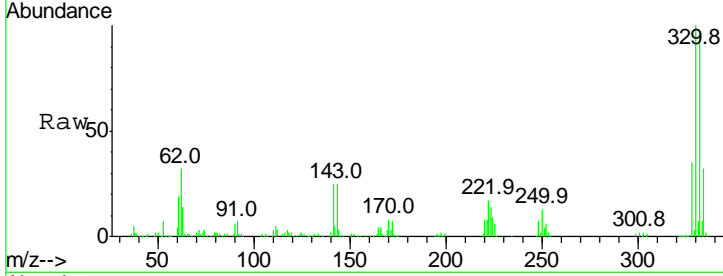




#41
 2,4,6-Tribromophenol
 Concen: 157.82 ng
 RT: 10.57 min Scan# 760
 Delta R.T. -0.02 min
 Lab File: BF093531.D
 Acq: 10 Mar 2017 19:28

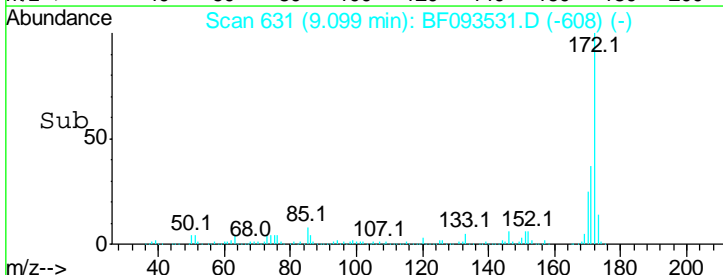
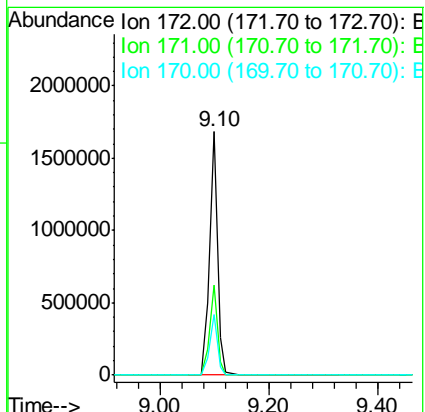
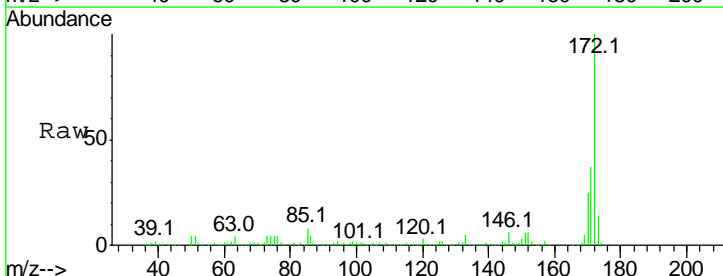
Instrument :
 BNA_F
 ClientSampled :
 D-44

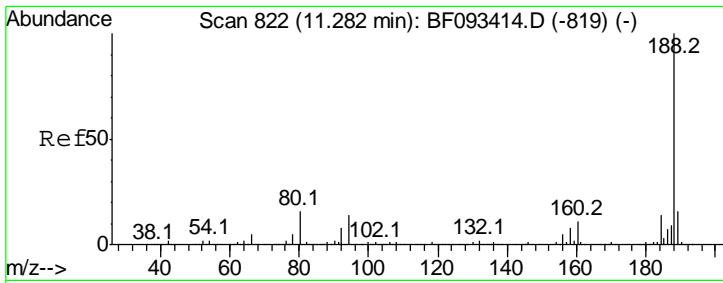
Tgt Ion	Resp	Lower	Upper
330	100		
332	96.7	77.4	116.2
141	39.3	34.1	51.1



#44
 2-Fluorobiphenyl
 Concen: 90.83 ng
 RT: 9.10 min Scan# 631
 Delta R.T. -0.03 min
 Lab File: BF093531.D
 Acq: 10 Mar 2017 19:28

Tgt Ion	Resp	Lower	Upper
172	100		
171	36.9	29.4	44.0
170	24.9	20.2	30.4

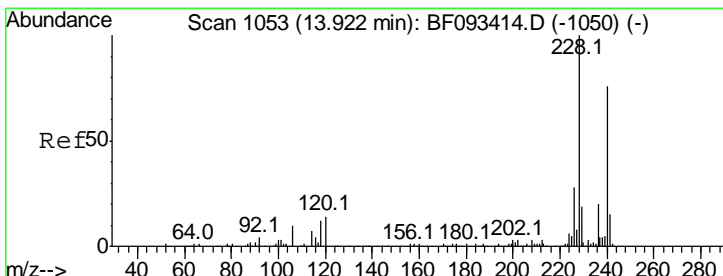
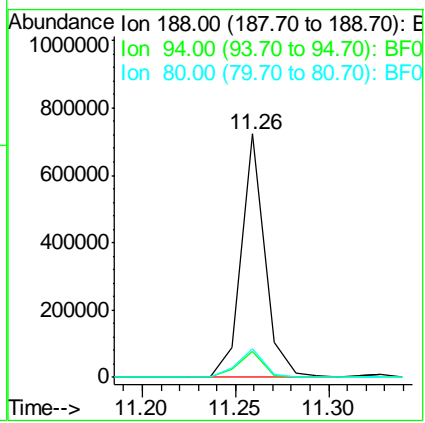
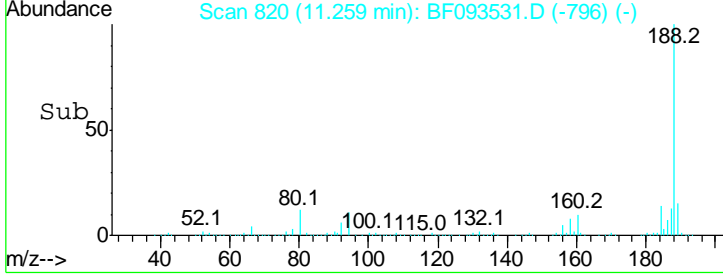
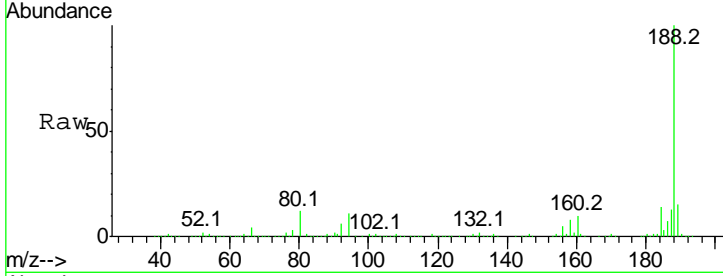




#63
 Phenanthrene-d10
 Concen: 20.00 ng
 RT: 11.26 min Scan# 820
 Delta R.T. -0.02 min
 Lab File: BF093531.D
 Acq: 10 Mar 2017 19:28

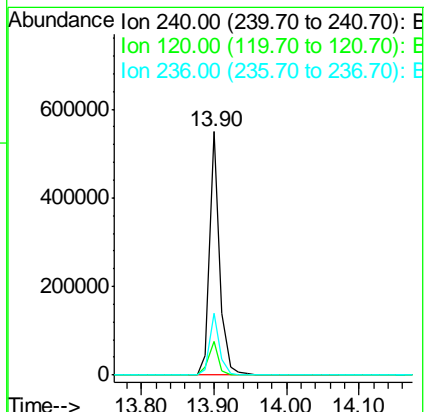
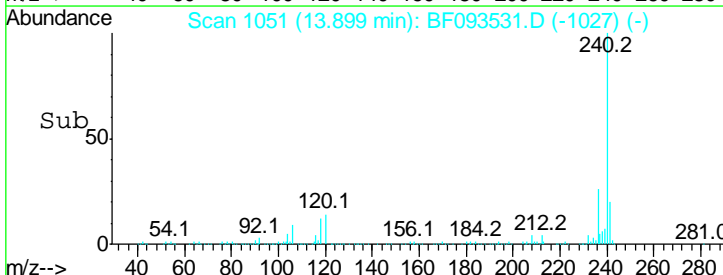
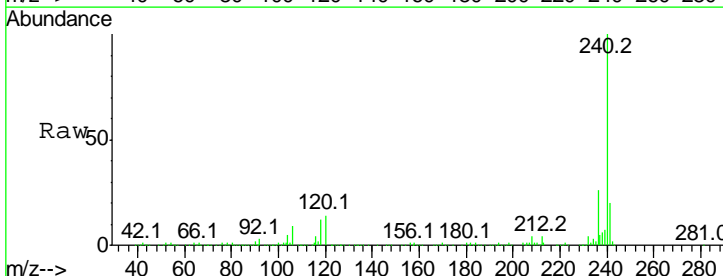
Instrument :
 BNA_F
 ClientSampled :
 D-44

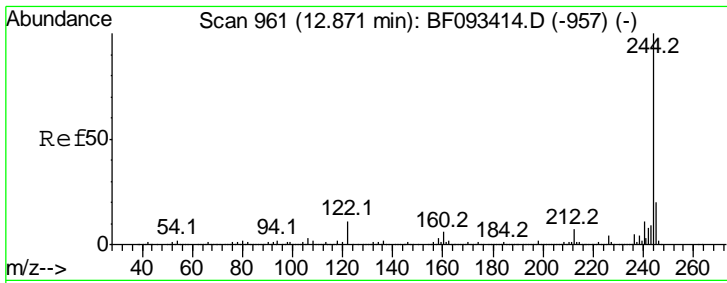
Tgt Ion	Resp	Lower	Upper
188	100		
94	10.8	10.0	15.0
80	11.6	11.2	16.8



#75
 Chrysene-d12
 Concen: 20.00 ng
 RT: 13.90 min Scan# 1051
 Delta R.T. -0.02 min
 Lab File: BF093531.D
 Acq: 10 Mar 2017 19:28

Tgt Ion	Resp	Lower	Upper
240	100		
120	13.7	12.9	19.3
236	25.6	20.9	31.3



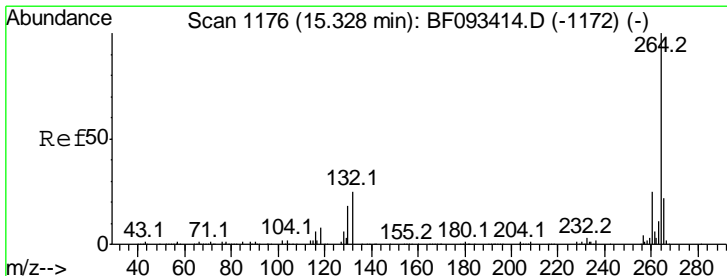
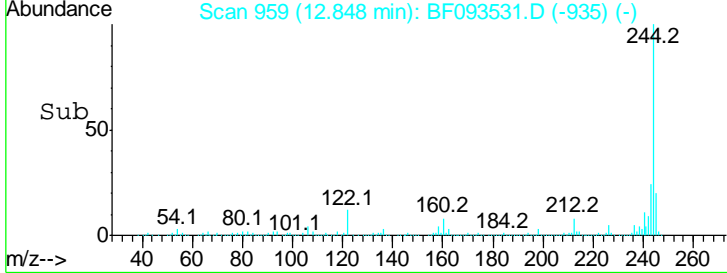
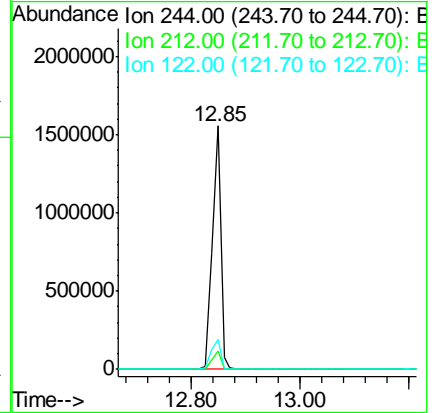
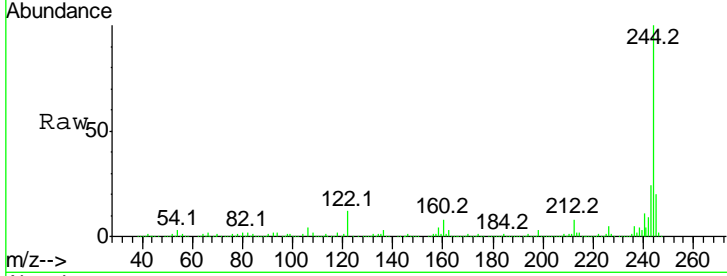


#78
 Terphenyl-d14
 Concen: 81.68 ng
 RT: 12.85 min Scan# 959
 Delta R.T. -0.02 min
 Lab File: BF093531.D
 Acq: 10 Mar 2017 19:28

Instrument :
 BNA_F
 ClientSampled :
 D-44

Tgt Ion: 244 Resp: 1656629

Ion	Ratio	Lower	Upper
244	100		
212	7.8	6.2	9.2
122	12.2	11.4	17.2



#86
 Perylene-d12
 Concen: 20.00 ng
 RT: 15.31 min Scan# 1174
 Delta R.T. -0.02 min
 Lab File: BF093531.D
 Acq: 10 Mar 2017 19:28

Tgt Ion: 264 Resp: 395853

Ion	Ratio	Lower	Upper
264	100		
260	24.3	19.2	28.8
265	21.2	17.4	26.0

