

Data Path : Z:\HPCHEM1\BNA\_F\DATA\BF031116\  
 Data File : BF085405.D  
 Acq On : 12 Mar 2016 8:02  
 Operator : UM/SJ  
 Sample : H1730-06  
 Misc :  
 ALS Vial : 31 Sample Multiplier: 1

Instrument :  
 BNA\_F  
 ClientSampleId :  
 W170TH-SB-17-COMP(0.5-1.5)

Integration Parameters: rteint.p  
 Integrator: RTE  
 Smoothing : ON  
 Sampling : 1  
 Start Thrs: 0.2  
 Stop Thrs : 0

Filtering: 5  
 Min Area: 3 % of largest Peak  
 Max Peaks: 100  
 Peak Location: TOP

If leading or trailing edge < 100 prefer < Baseline drop else tangent >  
 Peak separation: 5

Method : Z:\HPCHEM1\BNA\_F\METHODS\8270-BF030316.M  
 Title : ASP BNA STANDARDS FOR 5 POINT CALIBRATION

Signal : TIC

peak #	R.T. min	first scan	max scan	last scan	PK TY	peak height	corr. area	corr. % max.	% of total
1	5.144	247	250	256	rVB	189478	286312	7.51%	0.748%
2	5.544	282	285	287	rBV	3416244	3505254	91.88%	9.163%
3	6.562	372	374	377	rBV	2494693	3771659	98.87%	9.860%
4	6.710	384	387	389	rBV	2699100	3814888	100.00%	9.973%
5	6.939	404	407	409	rBV	850666	925472	24.26%	2.419%
6	7.087	418	420	423	rBV	2247721	3018293	79.12%	7.890%
7	7.499	453	456	458	rBV	2341226	2254766	59.10%	5.894%
8	7.579	461	463	466	rVB	51867	52613	1.38%	0.138%
9	7.945	490	495	499	rBV5	26854	54903	1.44%	0.144%
10	8.219	517	519	521	rBV	1318768	1153089	30.23%	3.014%
11	9.305	611	614	616	rBV	2929123	3758766	98.53%	9.826%
12	9.693	646	648	650	rBV	579630	515060	13.50%	1.346%
13	9.773	652	655	659	rBV3	20311	40901	1.07%	0.107%
14	9.911	664	667	669	rVB	114256	100389	2.63%	0.262%
15	9.979	671	673	675	rVB	1340309	1123981	29.46%	2.938%
16	10.173	688	690	693	rVB2	24641	43307	1.14%	0.113%
17	10.413	707	711	712	rBV	108190	171693	4.50%	0.449%
18	10.631	727	730	731	rBV	53864	84480	2.21%	0.221%
19	10.768	739	742	744	rBV	1964543	1859342	48.74%	4.861%
20	10.882	750	752	757	rBV	177690	202730	5.31%	0.530%
21	11.076	767	769	771	rBV	22832	38797	1.02%	0.101%
22	11.122	771	773	776	rVB3	38893	45261	1.19%	0.118%
23	11.328	789	791	793	rBV	91877	91662	2.40%	0.240%
24	11.465	800	803	805	rBV	1129046	1018883	26.71%	2.664%
25	11.625	814	817	820	rVB	24937	39156	1.03%	0.102%
26	11.751	825	828	834	rVB3	13762	43946	1.15%	0.115%
27	11.922	840	843	844	rBV	37806	56755	1.49%	0.148%
28	11.956	844	846	847	rVV	54194	67834	1.78%	0.177%
29	11.991	847	849	854	rVV2	783251	820228	21.50%	2.144%
30	12.174	862	865	870	rVB2	43398	76371	2.00%	0.200%
31	12.414	882	886	888	rBV4	22265	51727	1.36%	0.135%
32	12.677	907	909	910	rBV	184887	164817	4.32%	0.431%
33	12.699	910	911	916	rVB2	67578	116127	3.04%	0.304%
34	12.779	916	918	924	rBV	395981	474548	12.44%	1.241%

Data Path : Z:\HPCHEM1\BNA\_F\DATA\BF031116\  
 Data File : BF085405.D  
 Acq On : 12 Mar 2016 8:02  
 Operator : UM/SJ  
 Sample : H1730-06  
 Misc :  
 ALS Vial : 31 Sample Multiplier: 1

Instrument :  
 BNA\_F  
 ClientSampleId :  
 W170TH-SB-17-COMP(0.5-1.5)

Integration Parameters: rteint.p  
 Integrator: RTE  
 Smoothing : ON  
 Sampling : 1  
 Start Thrs: 0.2  
 Stop Thrs : 0

Filtering: 5  
 Min Area: 3 % of largest Peak  
 Max Peaks: 100  
 Peak Location: TOP

If leading or trailing edge < 100 prefer < Baseline drop else tangent >  
 Peak separation: 5

Method : Z:\HPCHEM1\BNA\_F\METHODS\8270-BF030316.M  
 Title : ASP BNA STANDARDS FOR 5 POINT CALIBRATION

35	12.871	924	926	927	rBV	113173	106424	2.79%	0.278%
36	12.905	927	929	930	rBV	114813	92387	2.42%	0.242%
37	13.054	939	942	944	rBV	2750951	2543182	66.66%	6.648%
38	13.259	956	960	961	rBV3	40352	69304	1.82%	0.181%
39	13.499	979	981	982	rBV	29577	38668	1.01%	0.101%
40	13.522	982	983	985	rVV	89980	80783	2.12%	0.211%
41	13.579	986	988	989	rVV2	61586	64563	1.69%	0.169%
42	13.625	989	992	993	rVV2	31396	53362	1.40%	0.139%
43	13.739	1000	1002	1004	rBV2	32773	41514	1.09%	0.109%
44	13.945	1018	1020	1023	rBV	785936	829877	21.75%	2.169%
45	14.105	1030	1034	1038	rBV2	972765	1709615	44.81%	4.469%
46	14.208	1041	1043	1045	rBV3	41305	45489	1.19%	0.119%
47	14.265	1046	1048	1051	rBV2	60291	87282	2.29%	0.228%
48	14.574	1073	1075	1078	rBV	164736	262246	6.87%	0.686%
49	14.734	1087	1089	1091	rVB	96225	92114	2.41%	0.241%
50	14.860	1098	1100	1103	rBV2	196598	284020	7.45%	0.742%
51	15.145	1123	1125	1129	rVB	81474	149265	3.91%	0.390%
52	15.214	1129	1131	1137	rBV2	144390	344081	9.02%	0.899%
53	15.580	1160	1163	1167	rBV	416103	743191	19.48%	1.943%
54	16.037	1201	1203	1205	rBV	100915	139994	3.67%	0.366%
55	16.083	1205	1207	1211	rVV2	102815	201198	5.27%	0.526%
56	16.277	1222	1224	1229	rVB4	66159	175135	4.59%	0.458%
57	17.214	1303	1306	1310	rBV3	57206	144632	3.79%	0.378%
58	18.654	1429	1432	1438	rVB3	37707	110555	2.90%	0.289%

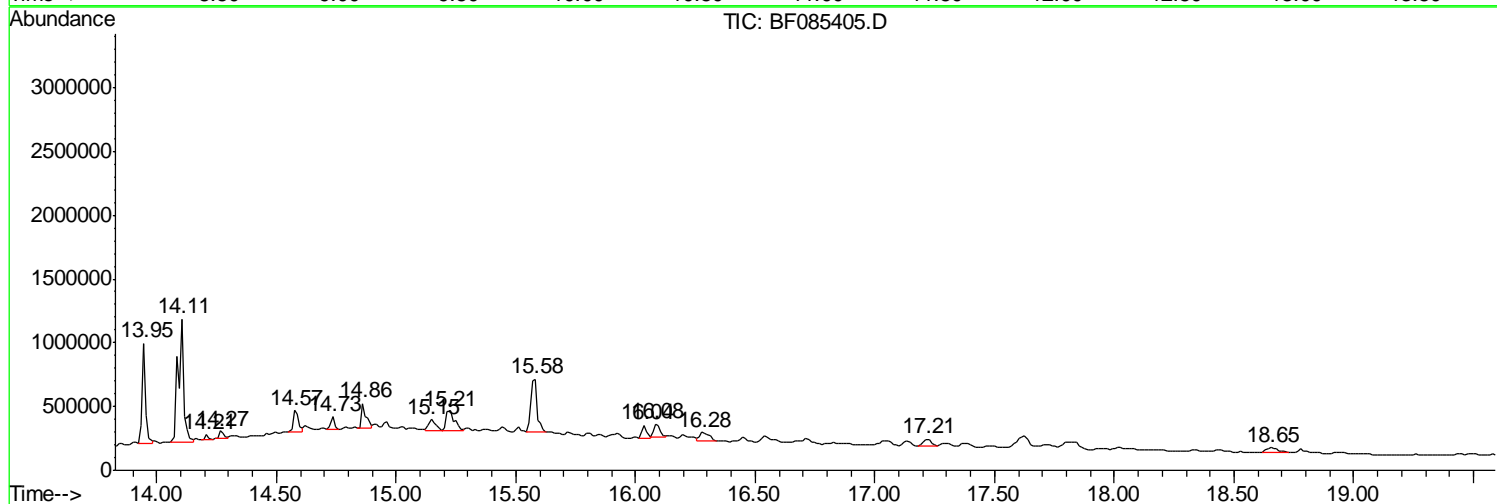
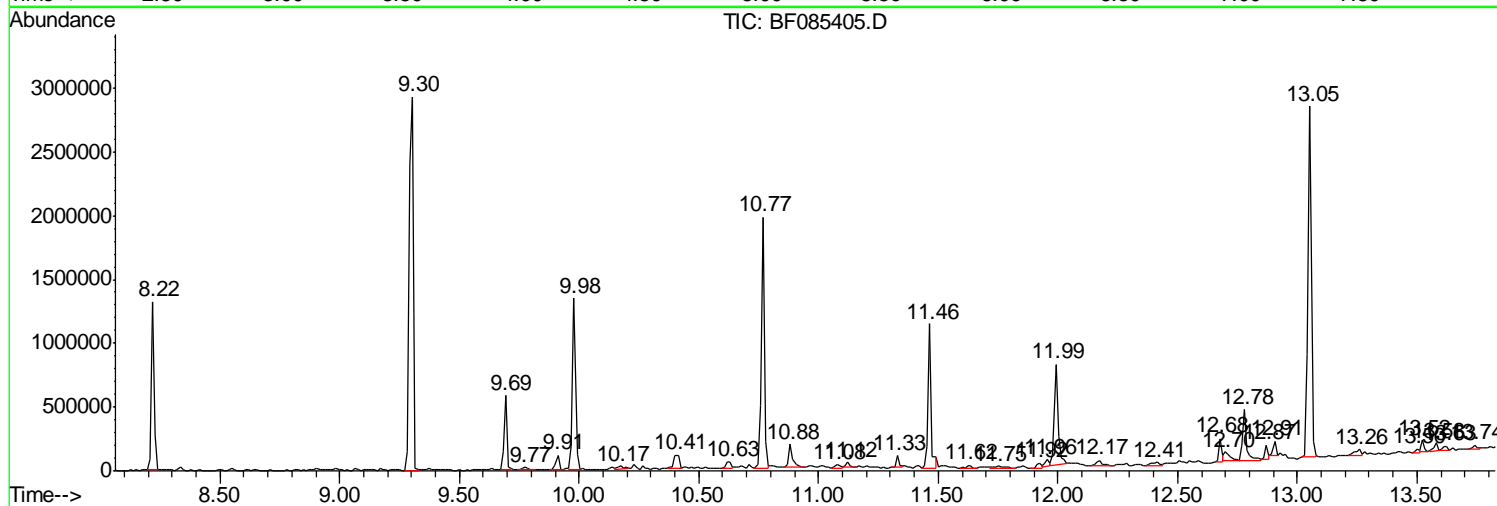
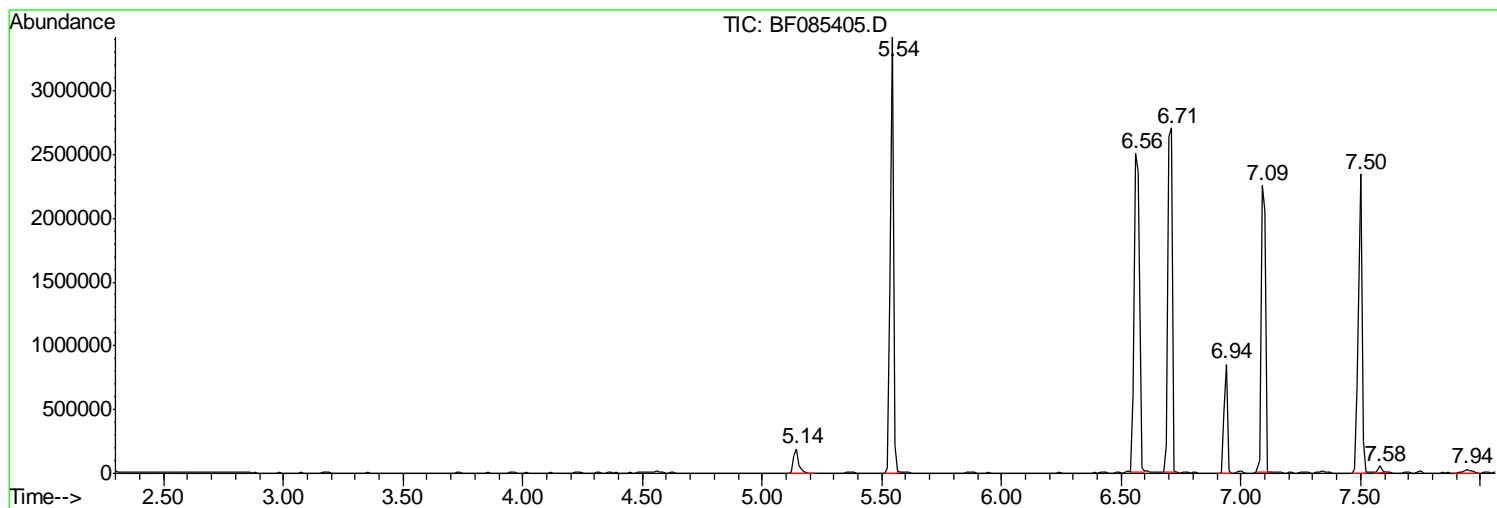
Sum of corrected areas: 38252891

Data Path : Z:\HPCHEM1\BNA\_F\DATA\BF031116\  
Data File : BF085405.D  
Acq On : 12 Mar 2016 8:02  
Operator : UM/SJ  
Sample : H1730-06  
Misc :  
ALS Vial : 31 Sample Multiplier: 1

Instrument :  
BNA\_F  
Client Sampled :  
W170TH-SB-17-COMP(0.5-1.5)

Quant Method : Z:\HPCHEM1\BNA\_F\METHODS\8270-BF030316.M  
Quant Title : ASP BNA STANDARDS FOR 5 POINT CALIBRATION

TIC Library : C:\DATABASE\NIST02.L  
TIC Integration Parameters: LSCINT.P



Data Path : Z:\HPCHEM1\BNA\_F\DATA\BF031116\  
 Data File : BF085405.D  
 Acq On : 12 Mar 2016 8:02  
 Operator : UM/SJ  
 Sample : H1730-06  
 Misc :  
 ALS Vial : 31 Sample Multiplier: 1

Instrument :  
 BNA\_F  
 ClientSampled :  
 W170TH-SB-17-COMP(0.5-1.5)

Quant Method : Z:\HPCHEM1\BNA\_F\METHODS\8270-BF030316.M  
 Quant Title : ASP BNA STANDARDS FOR 5 POINT CALIBRATION

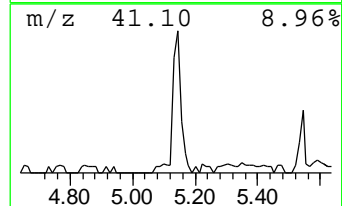
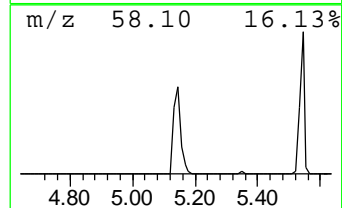
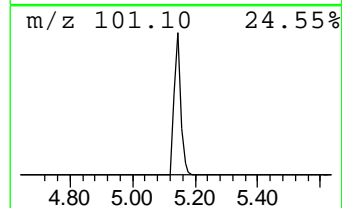
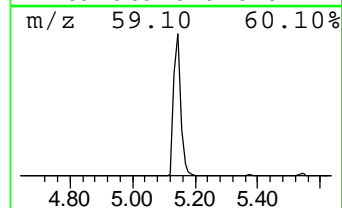
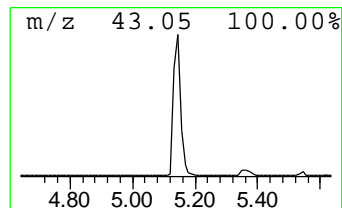
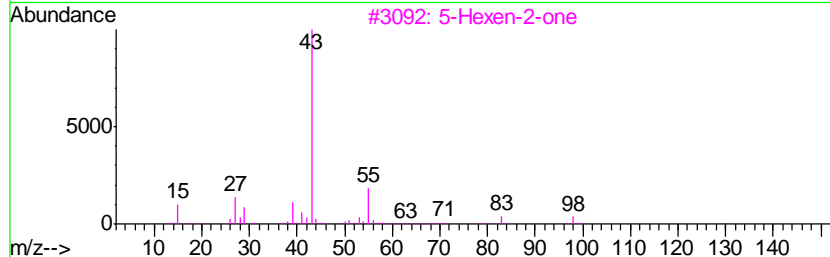
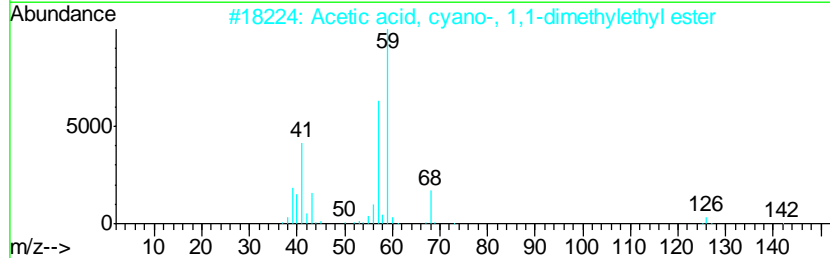
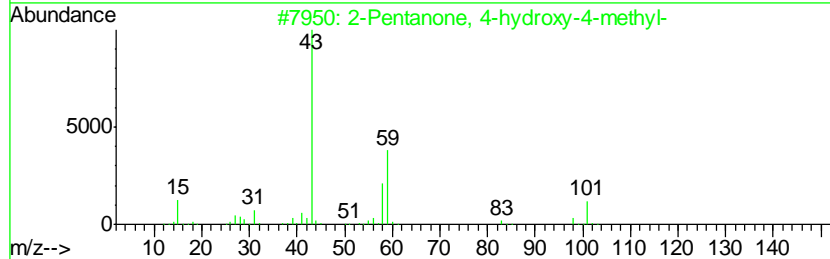
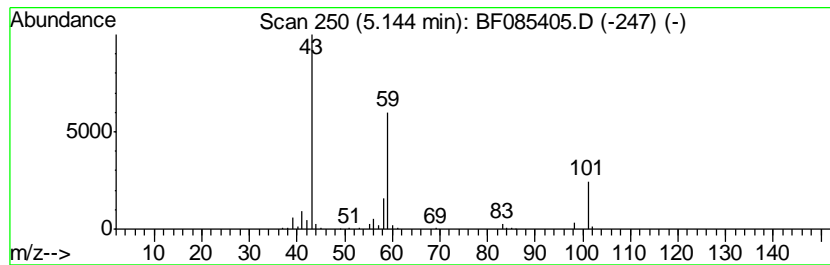
TIC Library : C:\DATABASE\NIST02.L  
 TIC Integration Parameters: LSCINT.P

\*\*\*\*\*  
 Peak Number 1 2-Pentanone, 4-hydroxy-4-me... Concentration Rank 8

R.T.	EstConc	Area	Relative to ISTD	R.T.
5.14	6.19 ng	286312	1,4-Dichlorobenzene-d4	6.94

Hit#	of	Tentative ID	MW	MolForm	CAS#	Qual
1	5	2-Pentanone, 4-hydroxy-4-methyl-	116	C6H12O2	000123-42-2	50
2		Acetic acid, cyano-, 1,1-dimethyl...	141	C7H11NO2	001116-98-9	17
3		5-Hexen-2-one	98	C6H10O	000109-49-9	9
4		(+)-4-Amino-4,5-dihydro-2(3H)-f...	101	C4H7NO2	016504-58-8	9
5		Butane	58	C4H10	000106-97-8	9



Data Path : Z:\HPCHEM1\BNA\_F\DATA\BF031116\  
 Data File : BF085405.D  
 Acq On : 12 Mar 2016 8:02  
 Operator : UM/SJ  
 Sample : H1730-06  
 Misc :  
 ALS Vial : 31 Sample Multiplier: 1

Instrument :  
 BNA\_F  
 ClientSampleId :  
 W170TH-SB-17-COMP(0.5-1.5)

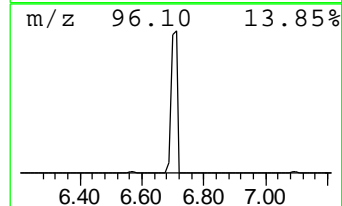
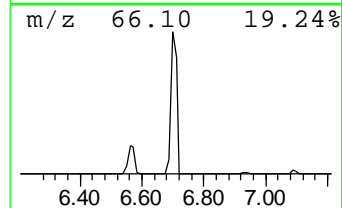
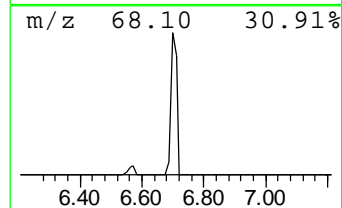
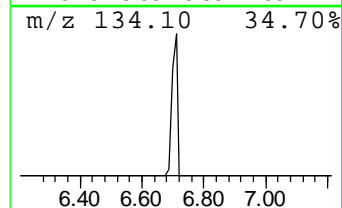
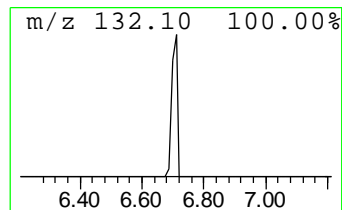
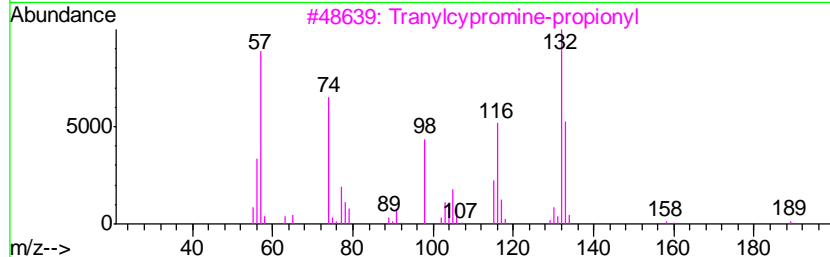
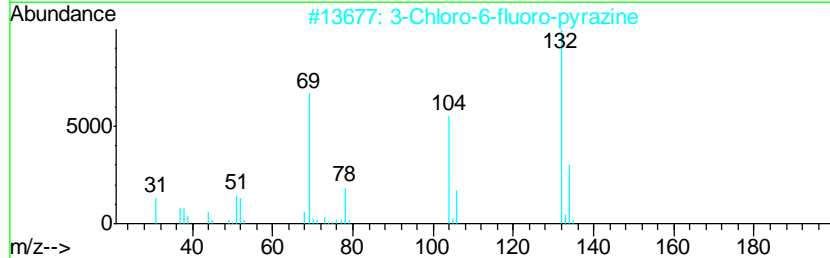
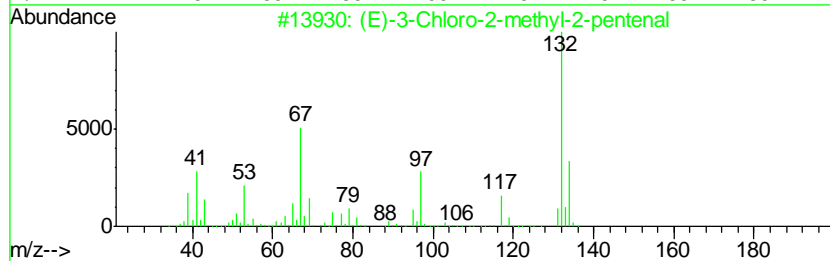
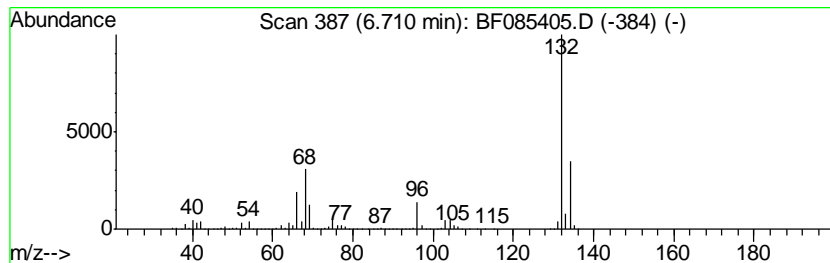
Quant Method : Z:\HPCHEM1\BNA\_F\METHODS\8270-BF030316.M  
 Quant Title : ASP BNA STANDARDS FOR 5 POINT CALIBRATION

TIC Library : C:\DATABASE\NIST02.L  
 TIC Integration Parameters: LSCINT.P

\*\*\*\*\*  
 Peak Number 2 unknown6.71 Concentration Rank 1

R.T.	EstConc	Area	Relative to ISTD	R.T.
6.71	82.44 ng	3814890	1,4-Dichlorobenzene-d4	6.94

Hit#	of	Tentative ID	MW	MolForm	CAS#	Qual
1	5	(E)-3-Chloro-2-methyl-2-pentenal	132	C6H9ClO	031357-76-3	35
2		3-Chloro-6-fluoro-pyrazine	132	C4H2ClFN2	1000146-10-7	25
3		Tranlycypromine-propionyl	189	C12H15NO	1000123-86-3	16
4		2H-Cyclopenta[d]pyridazine, 2-me...	132	C8H8N2	022291-85-6	9
5		1H-Benzimidazole, 2-methyl-	132	C8H8N2	000615-15-6	9



Data Path : Z:\HPCHEM1\BNA\_F\DATA\BF031116\  
 Data File : BF085405.D  
 Acq On : 12 Mar 2016 8:02  
 Operator : UM/SJ  
 Sample : H1730-06  
 Misc :  
 ALS Vial : 31 Sample Multiplier: 1

Instrument :  
 BNA\_F  
 ClientSampleID :  
 W170TH-SB-17-COMP(0.5-1.5)

Quant Method : Z:\HPCHEM1\BNA\_F\METHODS\8270-BF030316.M  
 Quant Title : ASP BNA STANDARDS FOR 5 POINT CALIBRATION

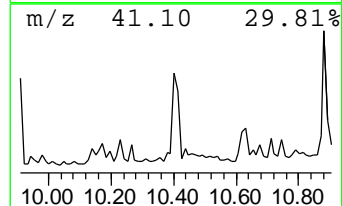
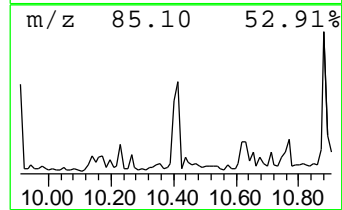
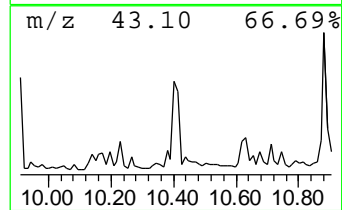
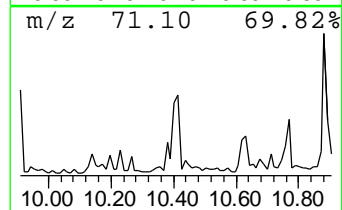
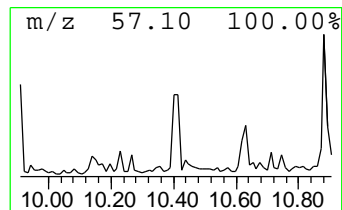
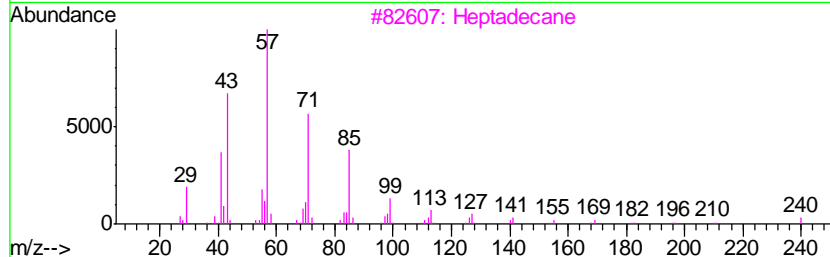
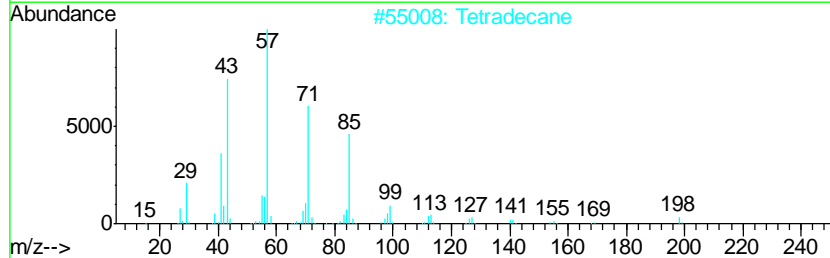
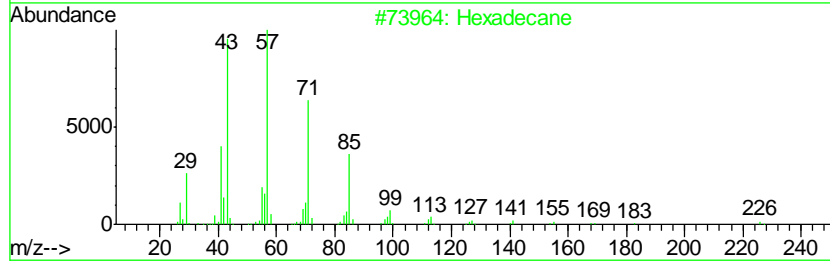
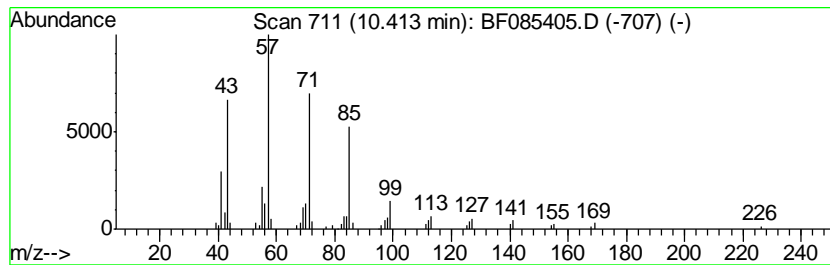
TIC Library : C:\DATABASE\NIST02.L  
 TIC Integration Parameters: LSCINT.P

\*\*\*\*\*  
 Peak Number 4 Hexadecane Concentration Rank 15

R.T.	EstConc	Area	Relative to ISTD	R.T.
10.41	3.06 ng	171693	Acenaphthene-d10	9.98

Hit#	of	Tentative ID	MW	MolForm	CAS#	Qual
1	5	Hexadecane	226	C16H34	000544-76-3	97
2		Tetradecane	198	C14H30	000629-59-4	91
3		Heptadecane	240	C17H36	000629-78-7	91
4		Pentadecane	212	C15H32	000629-62-9	91
5		Tetracosane	338	C24H50	000646-31-1	87



Data Path : Z:\HPCHEM1\BNA\_F\DATA\BF031116\  
 Data File : BF085405.D  
 Acq On : 12 Mar 2016 8:02  
 Operator : UM/SJ  
 Sample : H1730-06  
 Misc :  
 ALS Vial : 31 Sample Multiplier: 1

Instrument :  
 BNA\_F  
 ClientSampleID :  
 W170TH-SB-17-COMP(0.5-1.5)

Quant Method : Z:\HPCHEM1\BNA\_F\METHODS\8270-BF030316.M  
 Quant Title : ASP BNA STANDARDS FOR 5 POINT CALIBRATION

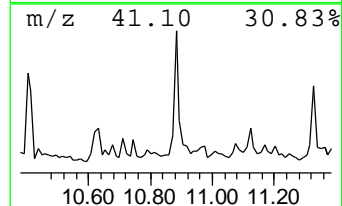
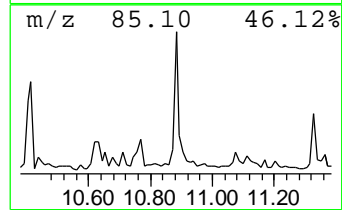
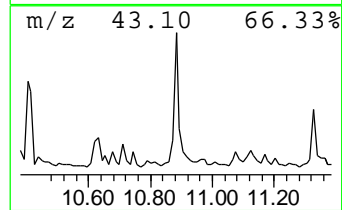
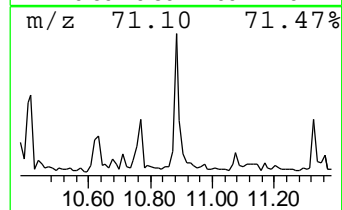
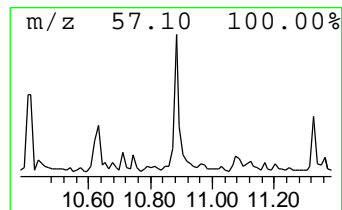
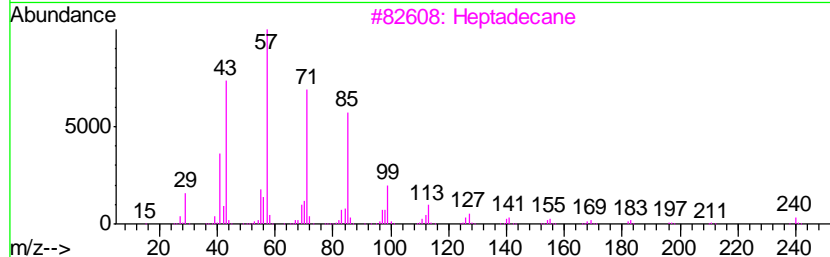
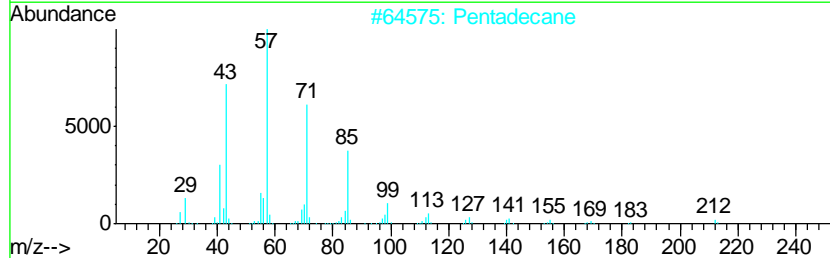
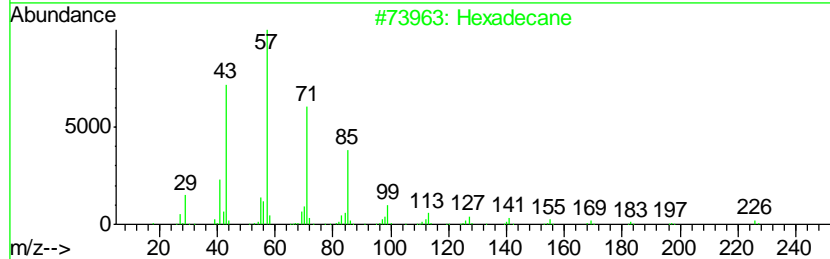
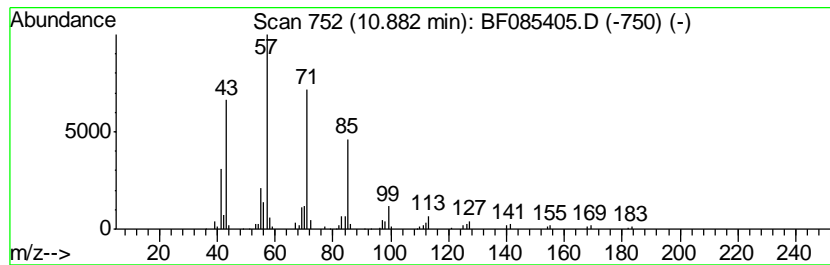
TIC Library : C:\DATABASE\NIST02.L  
 TIC Integration Parameters: LSCINT.P

\*\*\*\*\*  
 Peak Number 5 Pentadecane Concentration Rank 11

R.T.	EstConc	Area	Relative to ISTD	R.T.
10.88	3.98 ng	202730	Phenanthrene-d10	11.47

Hit#	of	Tentative ID	MW	MolForm	CAS#	Qual
1	5	Hexadecane	226	C16H34	000544-76-3	91
2		Pentadecane	212	C15H32	000629-62-9	91
3		Heptadecane	240	C17H36	000629-78-7	91
4		Dodecane, 2-methyl-6-propyl-	226	C16H34	055045-08-4	90
5		Tetradecane	198	C14H30	000629-59-4	90



Data Path : Z:\HPCHEM1\BNA\_F\DATA\BF031116\  
 Data File : BF085405.D  
 Acq On : 12 Mar 2016 8:02  
 Operator : UM/SJ  
 Sample : H1730-06  
 Misc :  
 ALS Vial : 31 Sample Multiplier: 1

Instrument :  
 BNA\_F  
 ClientSampleID :  
 W170TH-SB-17-COMP(0.5-1.5)

Quant Method : Z:\HPCHEM1\BNA\_F\METHODS\8270-BF030316.M  
 Quant Title : ASP BNA STANDARDS FOR 5 POINT CALIBRATION

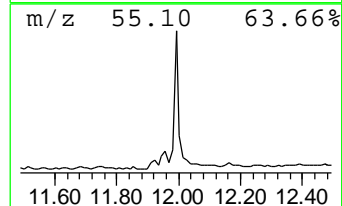
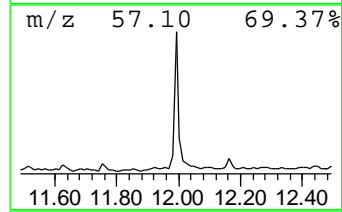
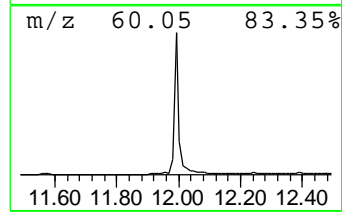
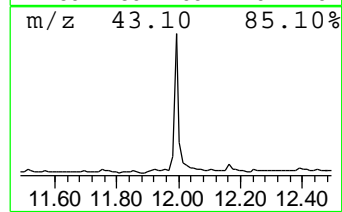
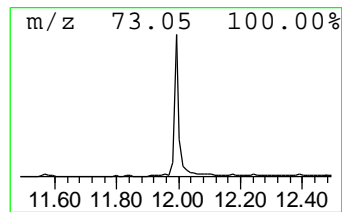
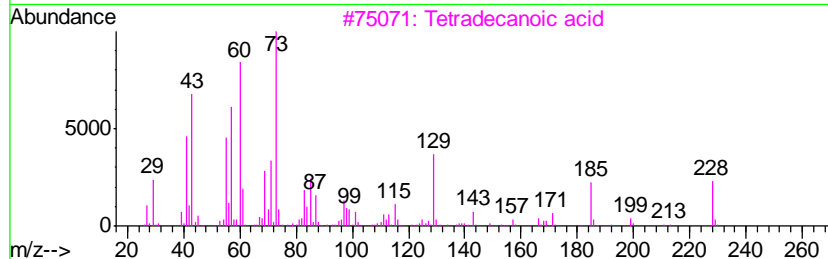
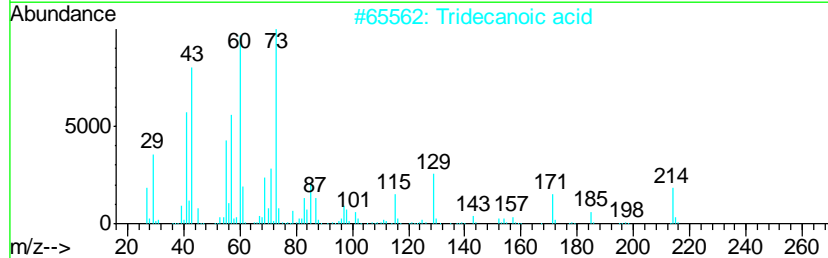
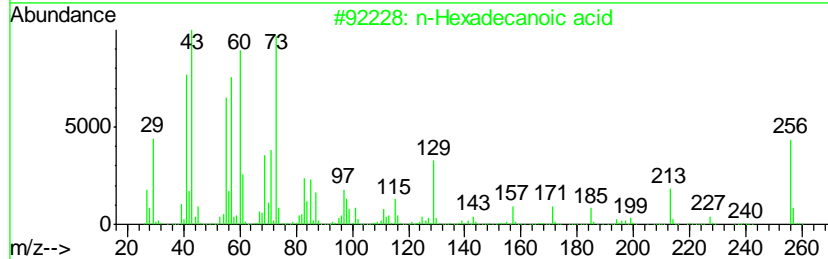
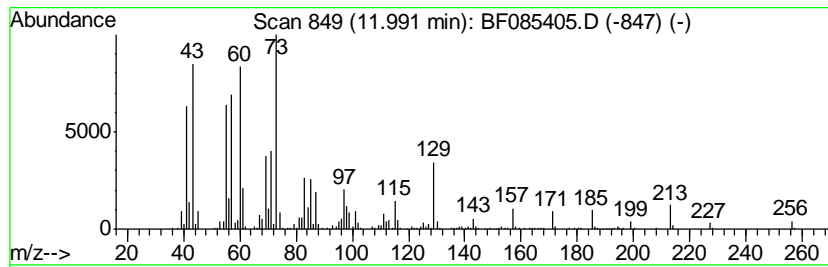
TIC Library : C:\DATABASE\NIST02.L  
 TIC Integration Parameters: LSCINT.P

\*\*\*\*\*  
 Peak Number 6 n-Hexadecanoic acid Concentration Rank 3

R.T.	EstConc	Area	Relative to ISTD	R.T.
11.99	16.10 ng	820228	Phenanthrene-d10	11.47

Hit#	of	Tentative ID	MW	MolForm	CAS#	Qual
1	5	n-Hexadecanoic acid	256	C16H32O2	000057-10-3	99
2		Tridecanoic acid	214	C13H26O2	000638-53-9	81
3		Tetradecanoic acid	228	C14H28O2	000544-63-8	80
4		Pentadecanoic acid	242	C15H30O2	001002-84-2	62
5		Estra-1,3,5(10)-trien-17.beta.-ol	256	C18H24O	002529-64-8	25





Data Path : Z:\HPCHEM1\BNA\_F\DATA\BF031116\  
 Data File : BF085405.D  
 Acq On : 12 Mar 2016 8:02  
 Operator : UM/SJ  
 Sample : H1730-06  
 Misc :  
 ALS Vial : 31 Sample Multiplier: 1

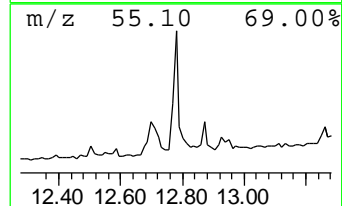
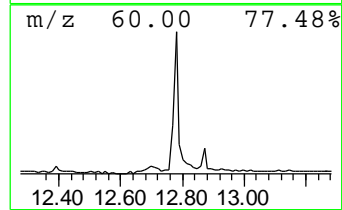
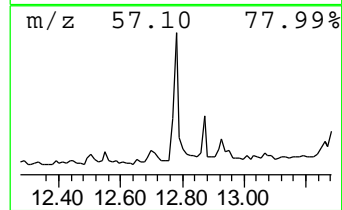
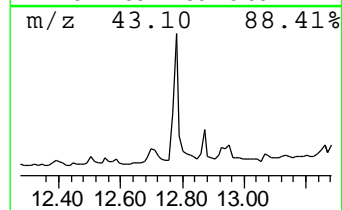
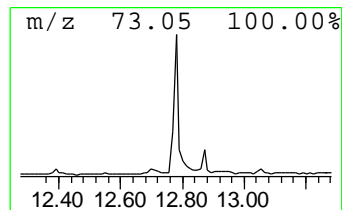
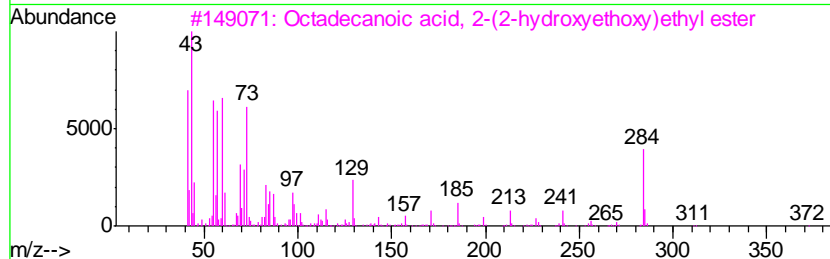
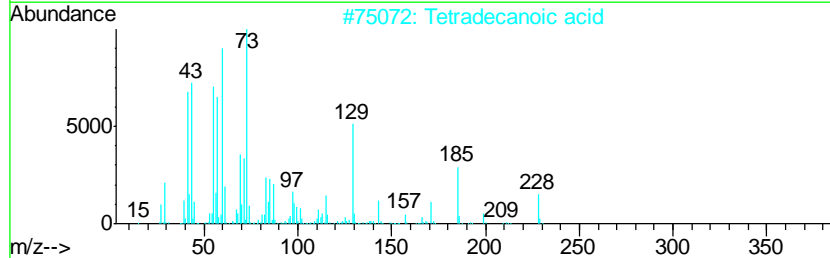
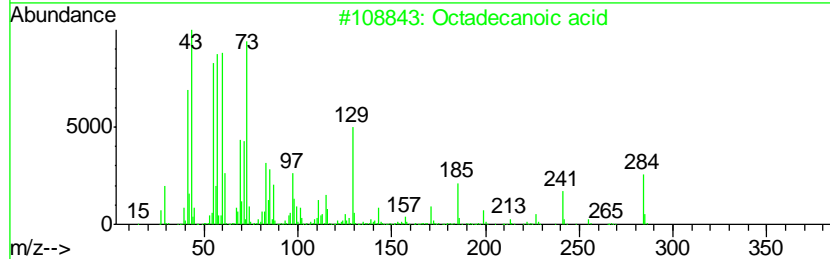
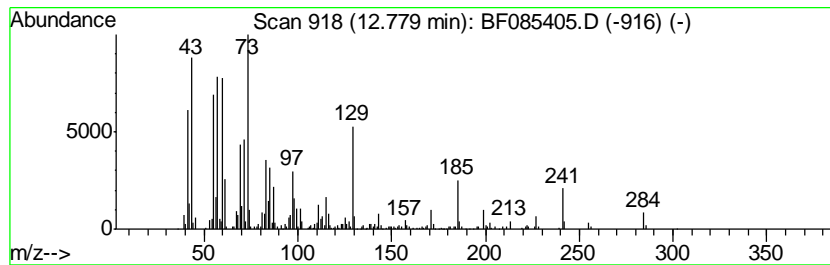
Instrument :  
 BNA\_F  
 ClientSampleID :  
 W170TH-SB-17-COMP(0.5-1.5)

Quant Method : Z:\HPCHEM1\BNA\_F\METHODS\8270-BF030316.M  
 Quant Title : ASP BNA STANDARDS FOR 5 POINT CALIBRATION

TIC Library : C:\DATABASE\NIST02.L  
 TIC Integration Parameters: LSCINT.P

\*\*\*\*\*  
 Peak Number 7 Octadecanoic acid Concentration Rank 5

R.T.	EstConc	Area	Relative to ISTD	R.T.		
12.78	9.32 ng	474548	Phenanthrene-d10	11.47		
Hit# of	5	Tentative ID	MW	MolForm	CAS#	Qual
1		Octadecanoic acid	284	C18H36O2	000057-11-4	99
2		Tetradecanoic acid	228	C14H28O2	000544-63-8	90
3		Octadecanoic acid, 2-(2-hydroxye...	372	C22H44O4	000106-11-6	87
4		Pentadecanoic acid	242	C15H30O2	001002-84-2	74
5		n-Decanoic acid	172	C10H20O2	000334-48-5	70



Data Path : Z:\HPCHEM1\BNA\_F\DATA\BF031116\  
 Data File : BF085405.D  
 Acq On : 12 Mar 2016 8:02  
 Operator : UM/SJ  
 Sample : H1730-06  
 Misc :  
 ALS Vial : 31 Sample Multiplier: 1

Instrument :  
 BNA\_F  
 ClientSampled :  
 W170TH-SB-17-COMP(0.5-1.5)

Quant Method : Z:\HPCHEM1\BNA\_F\METHODS\8270-BF030316.M  
 Quant Title : ASP BNA STANDARDS FOR 5 POINT CALIBRATION

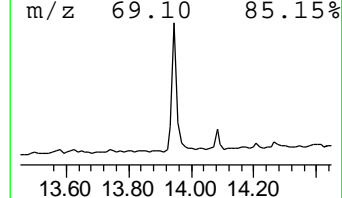
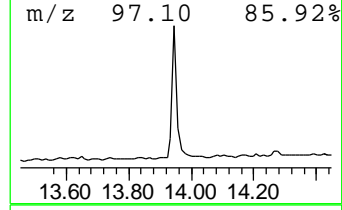
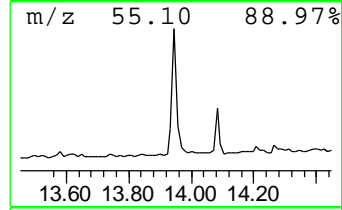
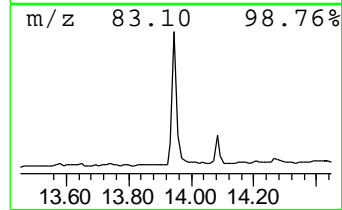
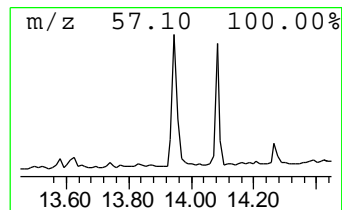
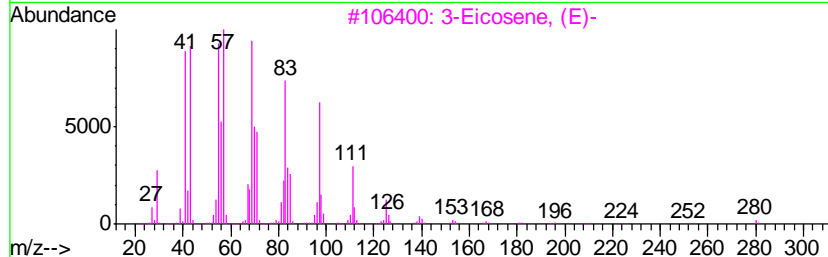
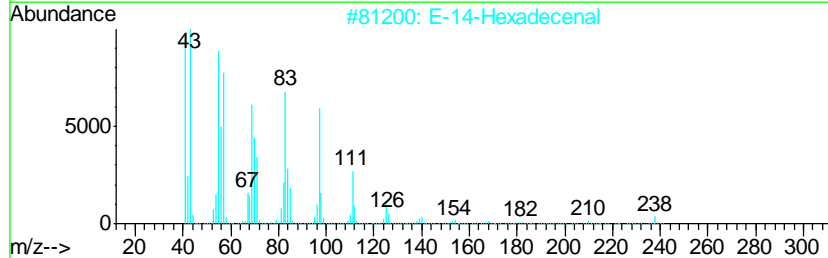
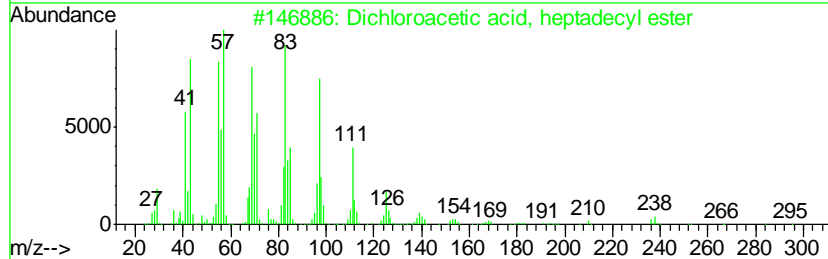
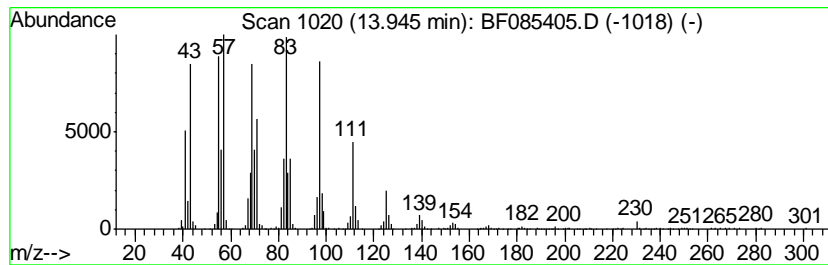
TIC Library : C:\DATABASE\NIST02.L  
 TIC Integration Parameters: LSCINT.P

\*\*\*\*\*  
 Peak Number 8 Dichloroacetic acid, heptad... Concentration Rank 4

R.T.	EstConc	Area	Relative to ISTD	R.T.
13.95	9.71 ng	829877	Chrysene-d12	14.11

Hit#	of	Tentative ID	MW	MolForm	CAS#	Qual
1	5	Dichloroacetic acid, heptadecyl ...	366	C19H36Cl2O2	1000282-98-2	94
2		E-14-Hexadecenal	238	C16H30O	330207-53-9	93
3		3-Eicosene, (E)-	280	C20H40	074685-33-9	91
4		Heptafluorobutyric acid, n-octad...	466	C22H37F7O2	000400-57-7	91
5		Trifluoroacetic acid, n-octadecy...	366	C20H37F3O2	079392-43-1	91



Data Path : Z:\HPCHEM1\BNA\_F\DATA\BF031116\  
 Data File : BF085405.D  
 Acq On : 12 Mar 2016 8:02  
 Operator : UM/SJ  
 Sample : H1730-06  
 Misc :  
 ALS Vial : 31 Sample Multiplier: 1

Instrument :  
 BNA\_F  
 ClientSampleID :  
 W170TH-SB-17-COMP(0.5-1.5)

Quant Method : Z:\HPCHEM1\BNA\_F\METHODS\8270-BF030316.M  
 Quant Title : ASP BNA STANDARDS FOR 5 POINT CALIBRATION

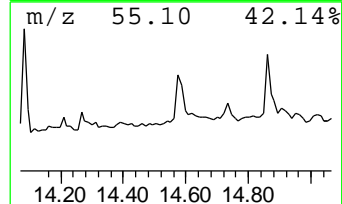
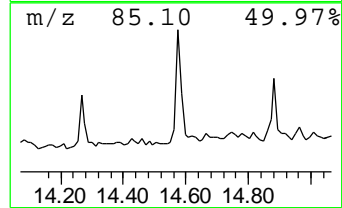
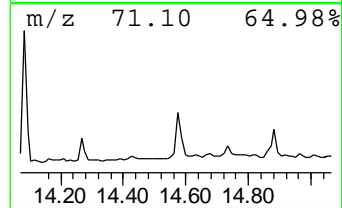
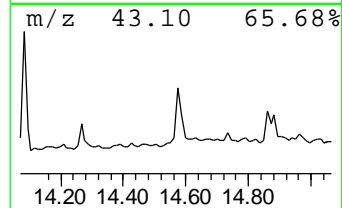
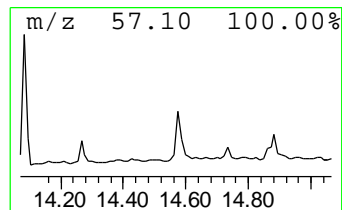
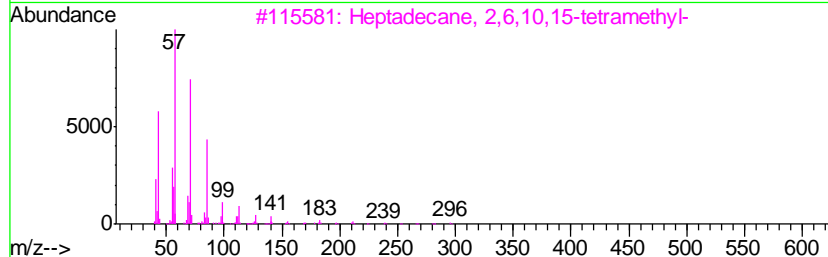
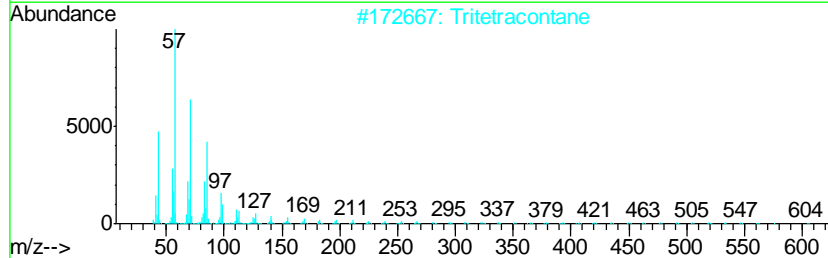
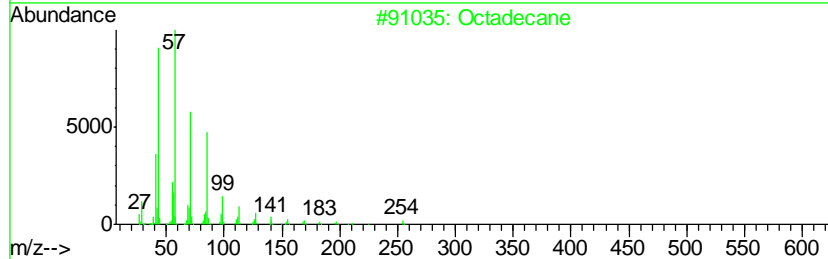
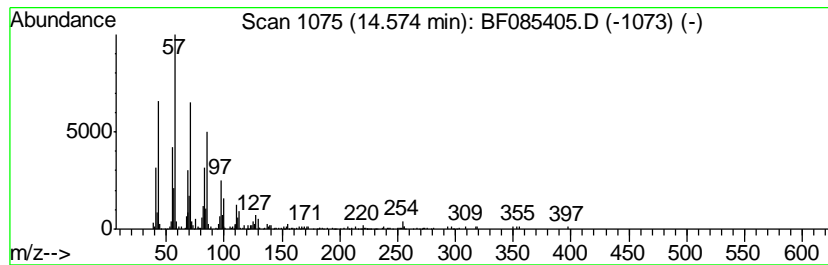
TIC Library : C:\DATABASE\NIST02.L  
 TIC Integration Parameters: LSCINT.P

\*\*\*\*\*  
 Peak Number 9 Octadecane Concentration Rank 14

R.T.	EstConc	Area	Relative to ISTD	R.T.
14.57	3.07 ng	262246	Chrysene-d12	14.11

Hit#	of	Tentative ID	MW	MolForm	CAS#	Qual
1	5	Octadecane	254	C18H38	000593-45-3	89
2		Tritetracontane	605	C43H88	007098-21-7	86
3		Heptadecane, 2,6,10,15-tetramethyl-	296	C21H44	054833-48-6	70
4		Pentadecane	212	C15H32	000629-62-9	68
5		Heneicosane	296	C21H44	000629-94-7	64



Data Path : Z:\HPCHEM1\BNA\_F\DATA\BF031116\  
 Data File : BF085405.D  
 Acq On : 12 Mar 2016 8:02  
 Operator : UM/SJ  
 Sample : H1730-06  
 Misc :  
 ALS Vial : 31 Sample Multiplier: 1

Instrument :  
 BNA\_F  
 ClientSampleID :  
 W170TH-SB-17-COMP(0.5-1.5)

Quant Method : Z:\HPCHEM1\BNA\_F\METHODS\8270-BF030316.M  
 Quant Title : ASP BNA STANDARDS FOR 5 POINT CALIBRATION

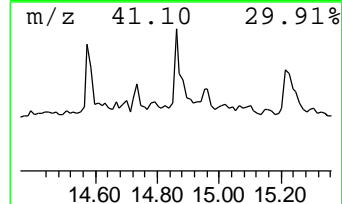
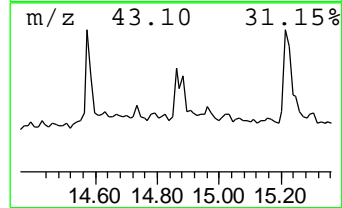
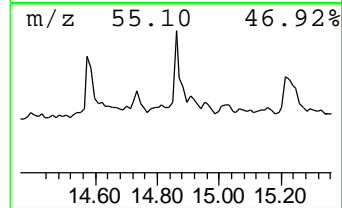
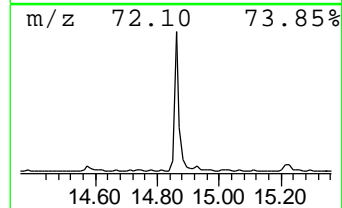
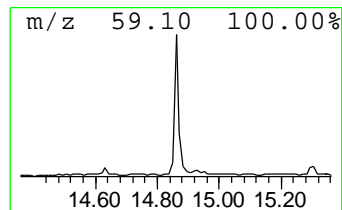
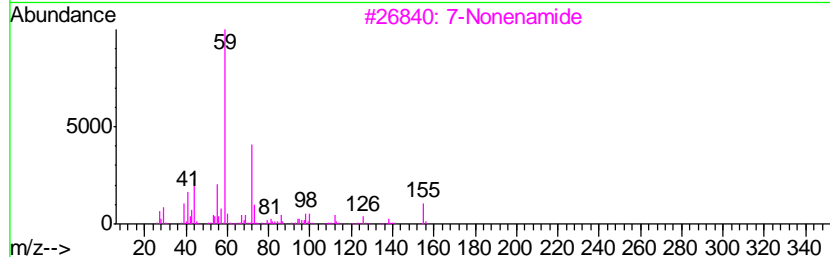
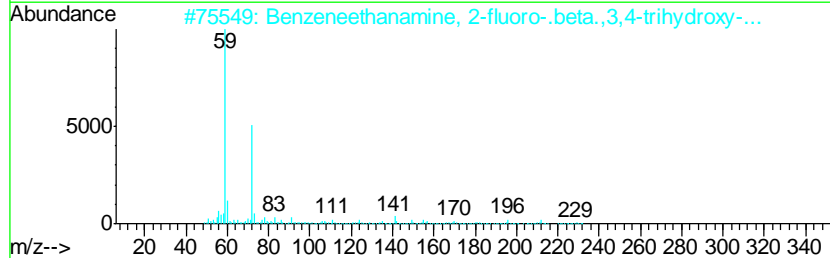
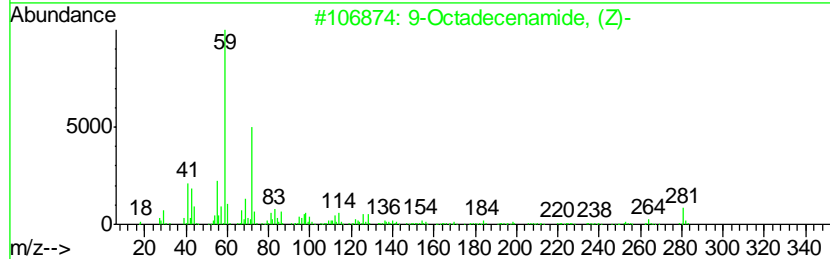
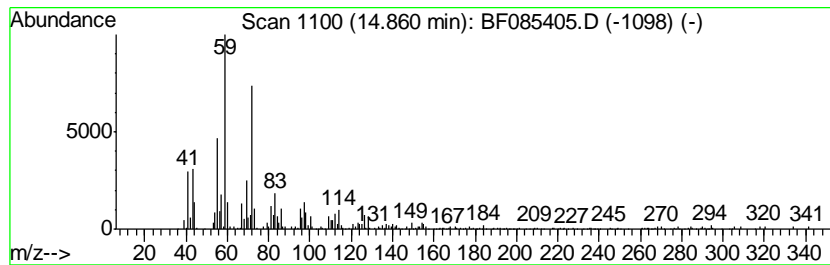
TIC Library : C:\DATABASE\NIST02.L  
 TIC Integration Parameters: LSCINT.P

\*\*\*\*\*  
 Peak Number 10 9-Octadecenamide, (Z)- Concentration Rank 7

R.T.	EstConc	Area	Relative to ISTD	R.T.
14.86	7.64 ng	284020	Perylene-d12	15.58

Hit#	of	Tentative ID	MW	MolForm	CAS#	Qual
1	5	9-Octadecenamide, (Z)-	281	C18H35NO	000301-02-0	87
2		Benzeneethanamine, 2-fluoro-.bet...	229	C11H16FNO3	061338-98-5	64
3		7-Nonenamide	155	C9H17NO	090949-53-4	60
4		Pentanamide, 4-methyl-	115	C6H13NO	001119-29-5	52
5		Heptanamide, 4-ethyl-5-methyl-	171	C10H21NO	054789-40-1	49



Data Path : Z:\HPCHEM1\BNA\_F\DATA\BF031116\  
 Data File : BF085405.D  
 Acq On : 12 Mar 2016 8:02  
 Operator : UM/SJ  
 Sample : H1730-06  
 Misc :  
 ALS Vial : 31 Sample Multiplier: 1

Instrument :  
 BNA\_F  
 ClientSampleId :  
 W170TH-SB-17-COMP(0.5-1.5)

Quant Method : Z:\HPCHEM1\BNA\_F\METHODS\8270-BF030316.M  
 Quant Title : ASP BNA STANDARDS FOR 5 POINT CALIBRATION

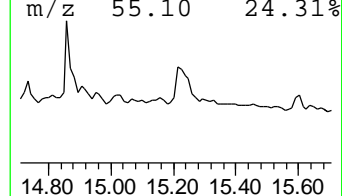
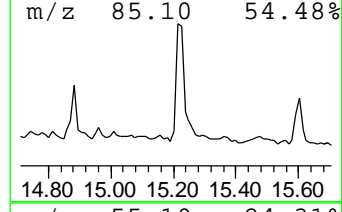
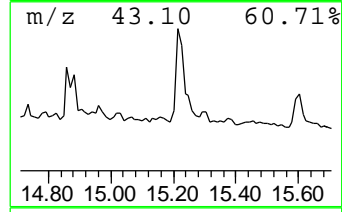
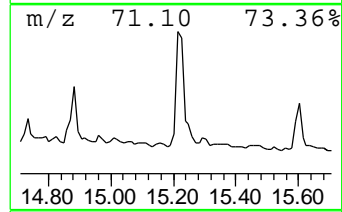
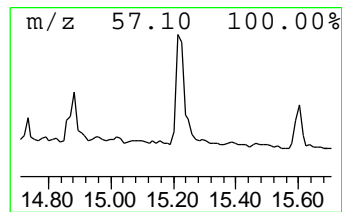
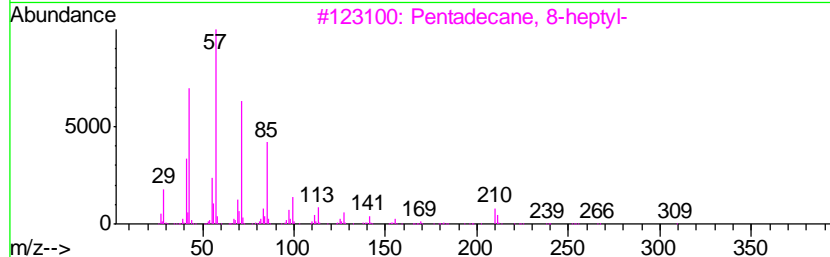
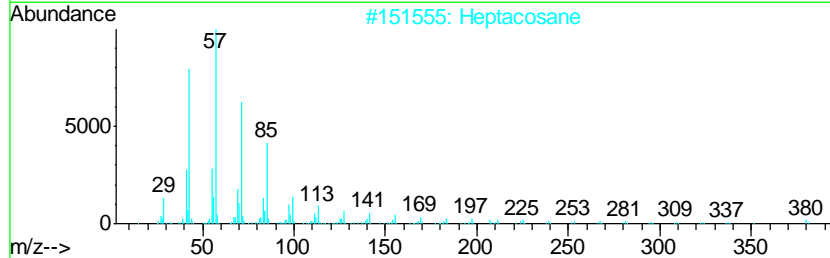
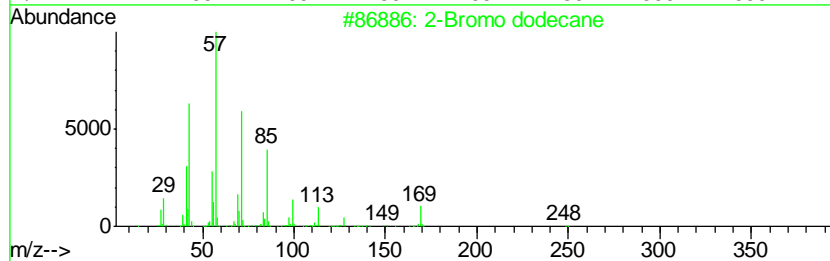
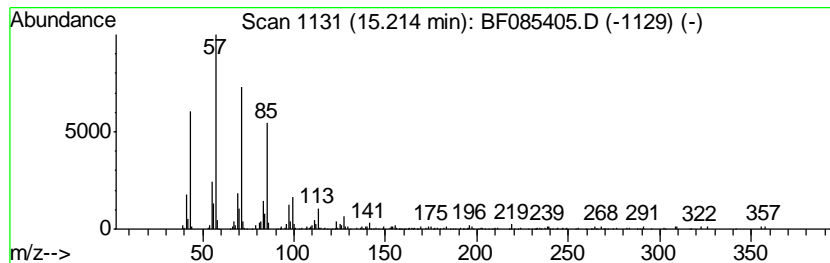
TIC Library : C:\DATABASE\NIST02.L  
 TIC Integration Parameters: LSCINT.P

\*\*\*\*\*  
 Peak Number 11 2-Bromo dodecane Concentration Rank 6

R.T.	EstConc	Area	Relative to ISTD	R.T.
15.21	9.26 ng	344081	Perylene-d12	15.58

Hit#	of	Tentative ID	MW	MolForm	CAS#	Qual
1	5	2-Bromo dodecane	248	C12H25Br	013187-99-0	93
2		Heptacosane	380	C27H56	000593-49-7	91
3		Pentadecane, 8-heptyl-	310	C22H46	071005-15-7	91
4		Pentadecane, 8-hexyl-	296	C21H44	013475-75-7	91
5		Nonadecane	268	C19H40	000629-92-5	90



Data Path : Z:\HPCHEM1\BNA\_F\DATA\BF031116\  
 Data File : BF085405.D  
 Acq On : 12 Mar 2016 8:02  
 Operator : UM/SJ  
 Sample : H1730-06  
 Misc :  
 ALS Vial : 31 Sample Multiplier: 1

Instrument :  
 BNA\_F  
 ClientSampleId :  
 W170TH-SB-17-COMP(0.5-1.5)

Quant Method : Z:\HPCHEM1\BNA\_F\METHODS\8270-BF030316.M  
 Quant Title : ASP BNA STANDARDS FOR 5 POINT CALIBRATION

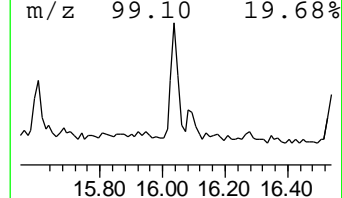
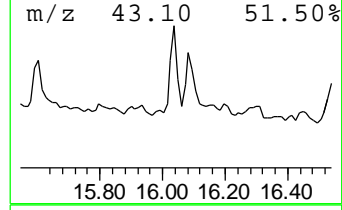
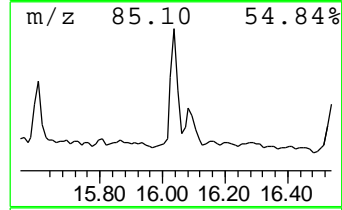
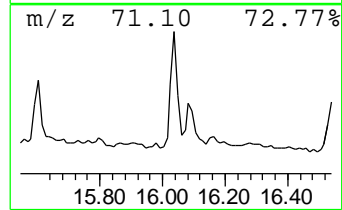
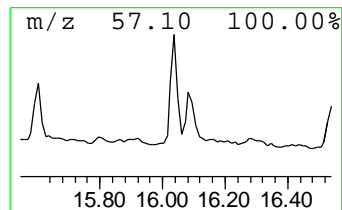
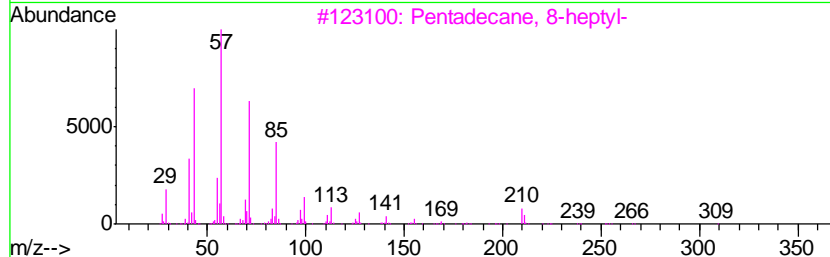
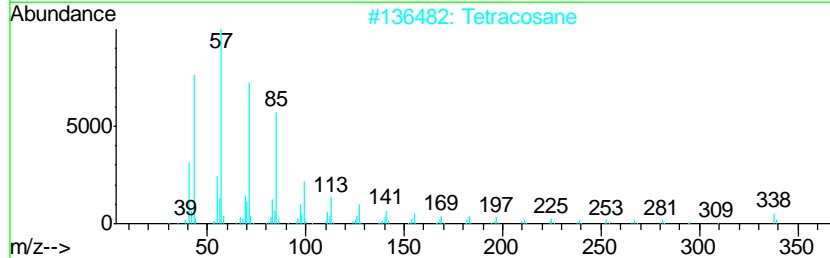
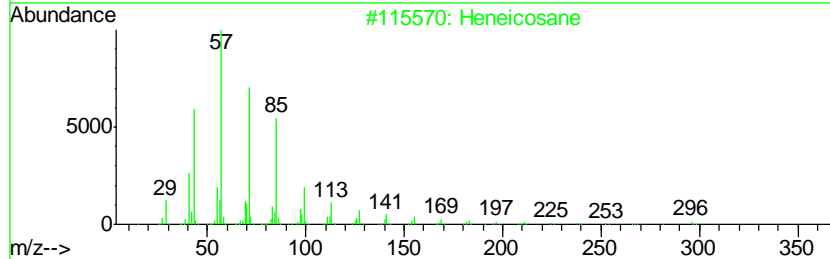
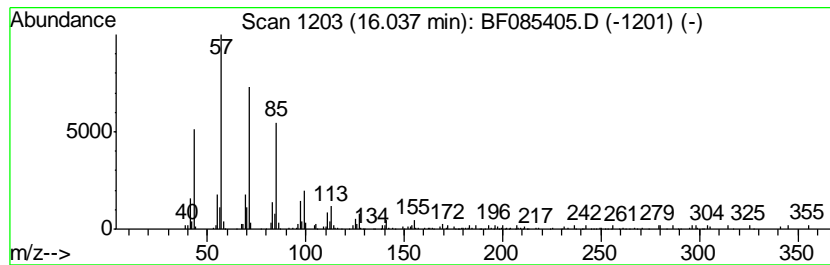
TIC Library : C:\DATABASE\NIST02.L  
 TIC Integration Parameters: LSCINT.P

\*\*\*\*\*  
 Peak Number 12 Heneicosane Concentration Rank 13

R.T.	EstConc	Area	Relative to ISTD	R.T.
16.04	3.77 ng	139994	Perylene-d12	15.58

Hit#	of	Tentative ID	MW	MolForm	CAS#	Qual
1	5	Heneicosane	296	C21H44	000629-94-7	98
2		Tetracosane	338	C24H50	000646-31-1	87
3		Pentadecane, 8-heptyl-	310	C22H46	071005-15-7	87
4		Heptadecane, 9-octyl-	352	C25H52	007225-64-1	87
5		Pentadecane, 8-hexyl-	296	C21H44	013475-75-7	86



Data Path : Z:\HPCHEM1\BNA\_F\DATA\BF031116\  
 Data File : BF085405.D  
 Acq On : 12 Mar 2016 8:02  
 Operator : UM/SJ  
 Sample : H1730-06  
 Misc :  
 ALS Vial : 31 Sample Multiplier: 1

Instrument :  
 BNA\_F  
 ClientSampleID :  
 W170TH-SB-17-COMP(0.5-1.5)

Quant Method : Z:\HPCHEM1\BNA\_F\METHODS\8270-BF030316.M  
 Quant Title : ASP BNA STANDARDS FOR 5 POINT CALIBRATION

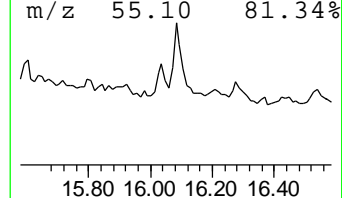
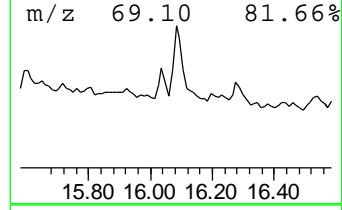
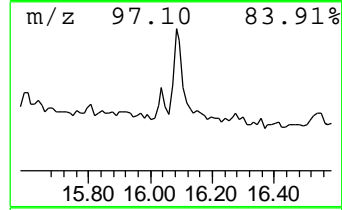
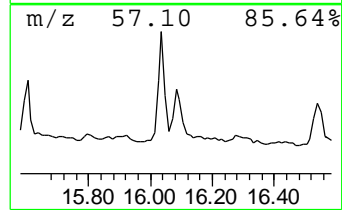
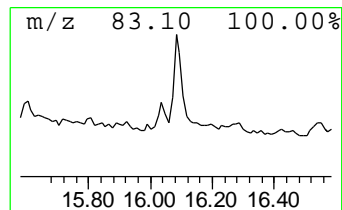
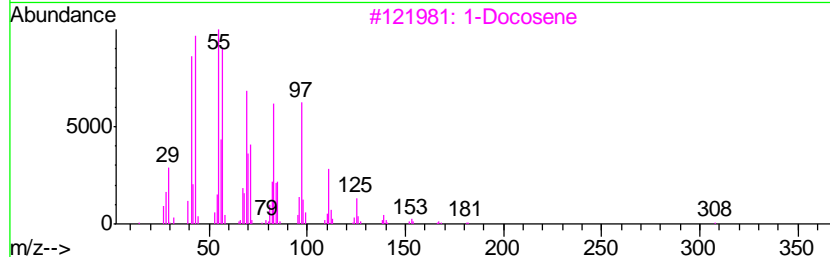
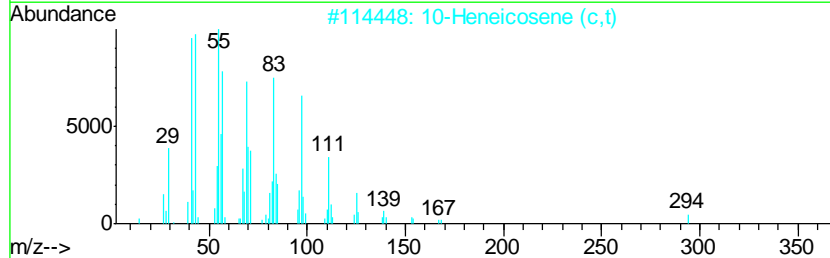
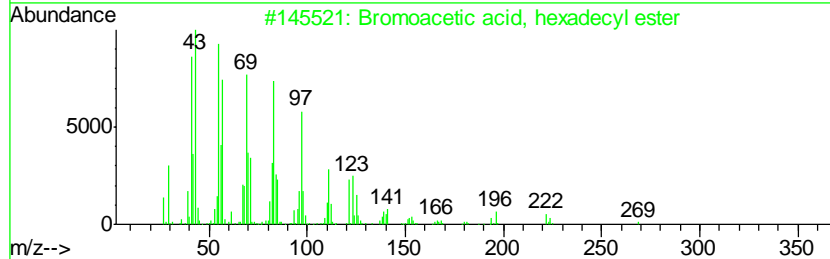
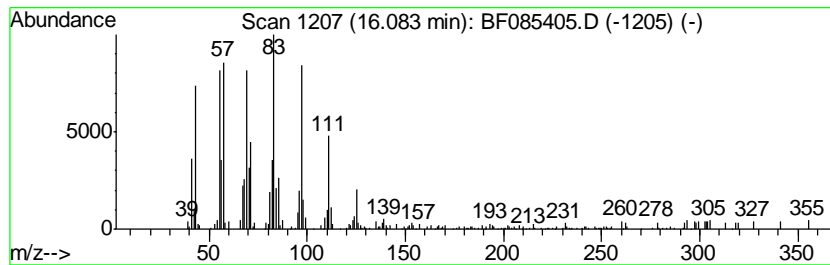
TIC Library : C:\DATABASE\NIST02.L  
 TIC Integration Parameters: LSCINT.P

\*\*\*\*\*  
 Peak Number 13 Bromoacetic acid, hexadecyl... Concentration Rank 9

R.T.	EstConc	Area	Relative to ISTD	R.T.
16.08	5.41 ng	201198	Perylene-d12	15.58

Hit#	of	Tentative ID	MW	MolForm	CAS#	Qual
1	5	Bromoacetic acid, hexadecyl ester	362	C18H35BrO2	005454-48-8	80
2		10-Heneicosene (c,t)	294	C21H42	095008-11-0	64
3		1-Docosene	308	C22H44	001599-67-3	58
4		Heptafluorobutanoic acid, heptad...	452	C21H35F7O2	1000282-97-3	58
5		1-Nonadecene	266	C19H38	018435-45-5	52



Data Path : Z:\HPCHEM1\BNA\_F\DATA\BF031116\  
 Data File : BF085405.D  
 Acq On : 12 Mar 2016 8:02  
 Operator : UM/SJ  
 Sample : H1730-06  
 Misc :  
 ALS Vial : 31 Sample Multiplier: 1

Instrument :  
 BNA\_F  
 ClientSampleId :  
 W170TH-SB-17-COMP(0.5-1.5)

Quant Method : Z:\HPCHEM1\BNA\_F\METHODS\8270-BF030316.M  
 Quant Title : ASP BNA STANDARDS FOR 5 POINT CALIBRATION

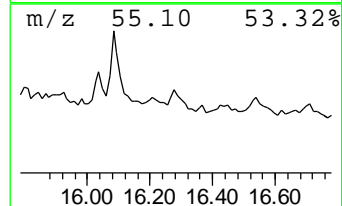
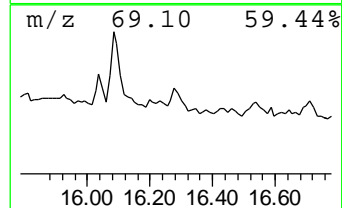
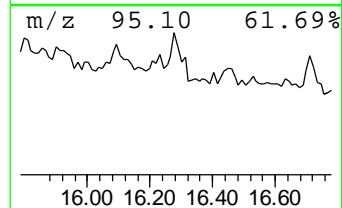
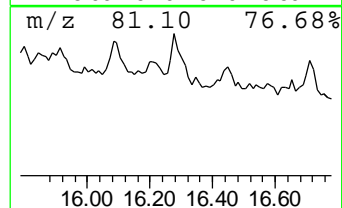
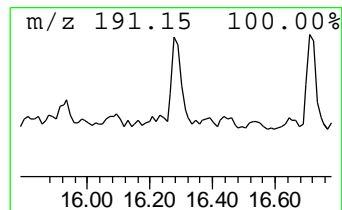
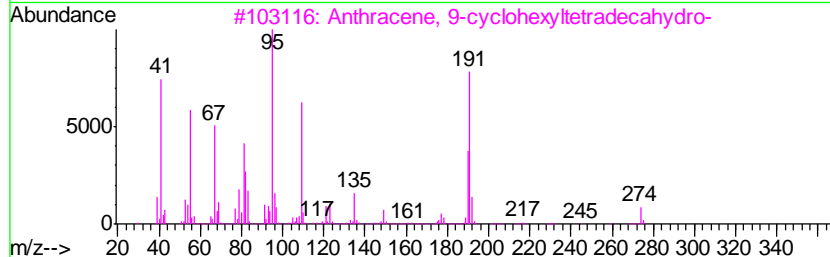
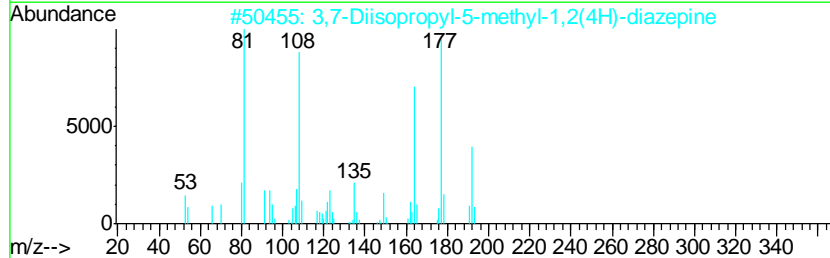
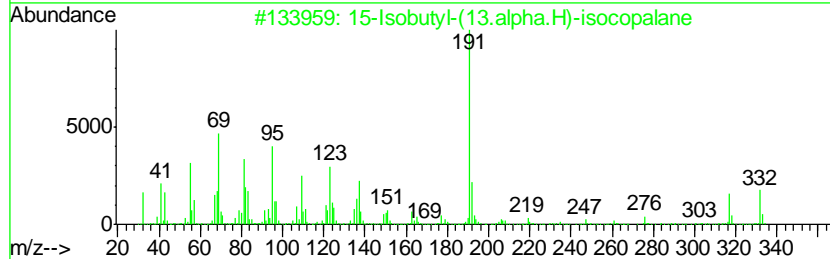
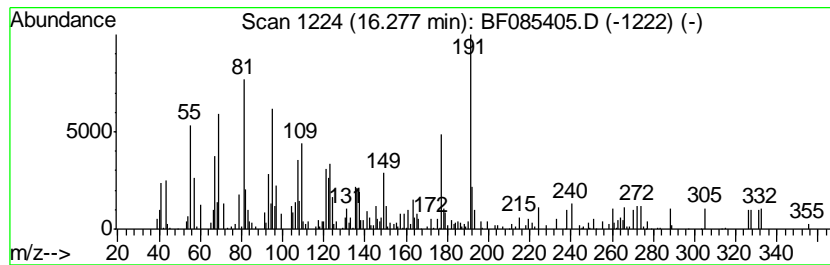
TIC Library : C:\DATABASE\NIST02.L  
 TIC Integration Parameters: LSCINT.P

\*\*\*\*\*  
 Peak Number 14 unknown16.28 Concentration Rank 10

R.T.	EstConc	Area	Relative to ISTD	R.T.
16.28	4.71 ng	175135	Perylene-d12	15.58

Hit#	of	Tentative ID	MW	MolForm	CAS#	Qual
1	5	15-Isobutyl-(13.alpha.H)-isocopa...	332	C24H44	087953-47-7	49
2		3,7-Diisopropyl-5-methyl-1,2(4H)...	192	C12H20N2	088829-71-4	38
3		Anthracene, 9-cyclohexyltetradec...	274	C20H34	055255-70-4	38
4		5-(1-Isopropenyl-4,5-dimethylbic...	332	C22H36O2	1000195-69-8	30
5		Z,Z-3,13-Octadecadien-1-ol	266	C18H34O	1000131-10-9	27





Data Path : Z:\HPCHEM1\BNA\_F\DATA\BF031116\  
 Data File : BF085405.D  
 Acq On : 12 Mar 2016 8:02  
 Operator : UM/SJ  
 Sample : H1730-06  
 Misc :  
 ALS Vial : 31 Sample Multiplier: 1

Instrument :  
 BNA\_F  
 ClientSampled :  
 W170TH-SB-17-COMP(0.5-1.5)

Quant Method : Z:\HPCHEM1\BNA\_F\METHODS\8270-BF030316.M  
 Quant Title : ASP BNA STANDARDS FOR 5 POINT CALIBRATION

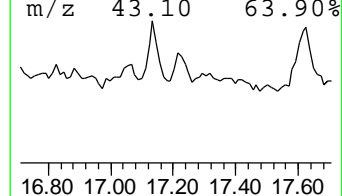
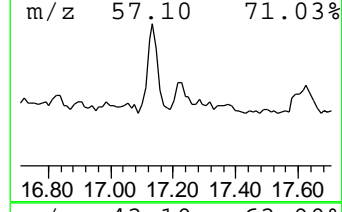
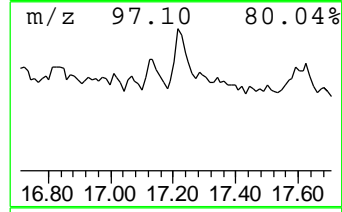
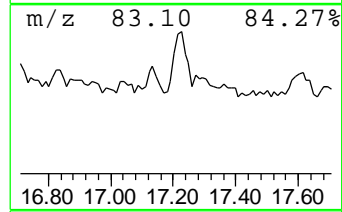
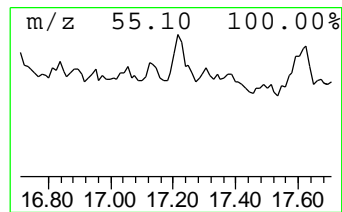
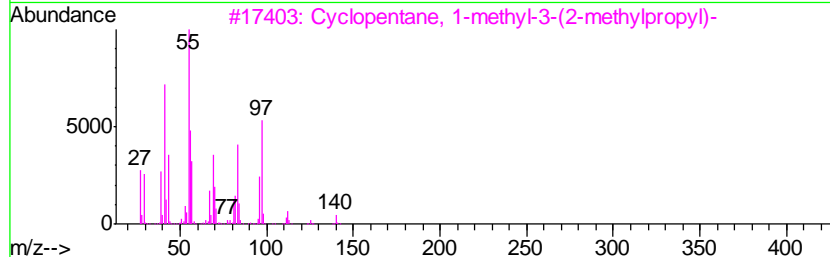
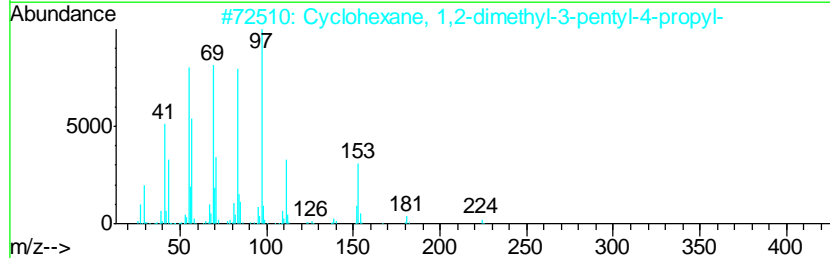
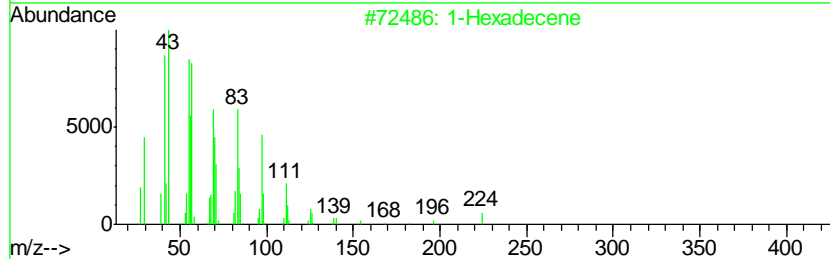
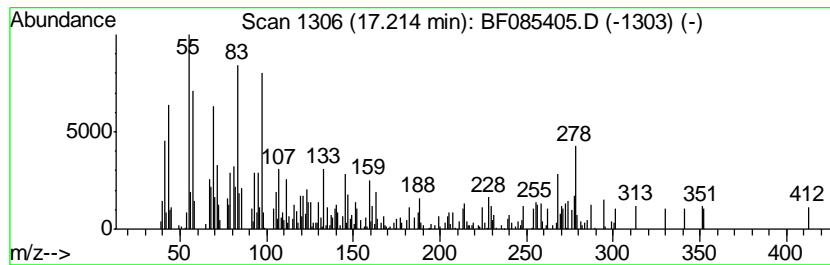
TIC Library : C:\DATABASE\NIST02.L  
 TIC Integration Parameters: LSCINT.P

\*\*\*\*\*  
 Peak Number 15 unknown17.21 Concentration Rank 12

R.T.	EstConc	Area	Relative to ISTD	R.T.
17.21	3.89 ng	144632	Perylene-d12	15.58

Hit#	of	Tentative ID	MW	MolForm	CAS#	Qual
1	5	1-Hexadecene	224	C16H32	000629-73-2	49
2		Cyclohexane, 1,2-dimethyl-3-pent...	224	C16H32	062376-17-4	46
3		Cyclopentane, 1-methyl-3-(2-meth...	140	C10H20	029053-04-1	46
4		1-Tridecene	182	C13H26	002437-56-1	46
5		Cyclohexadecane	224	C16H32	000295-65-8	43



Data Path : Z:\HPCHEM1\BNA\_F\DATA\BF031116\  
 Data File : BF085405.D  
 Acq On : 12 Mar 2016 8:02  
 Operator : UM/SJ  
 Sample : H1730-06  
 Misc :  
 ALS Vial : 31 Sample Multiplier: 1

Instrument :  
 BNA\_F  
 ClientSampleID :  
 W170TH-SB-17-COMP(0.5-1.5)

Quant Method : Z:\HPCHEM1\BNA\_F\METHODS\8270-BF030316.M  
 Quant Title : ASP BNA STANDARDS FOR 5 POINT CALIBRATION

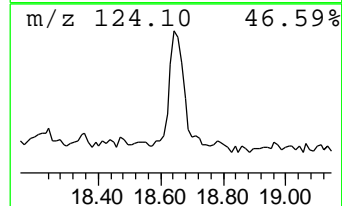
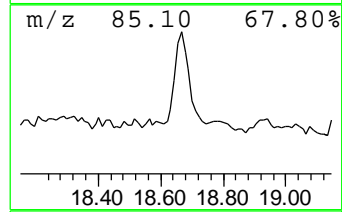
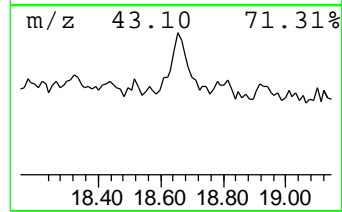
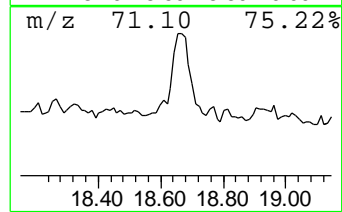
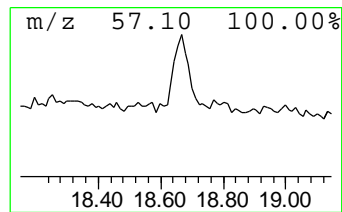
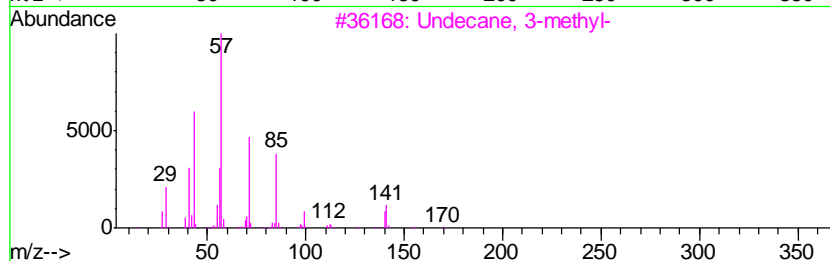
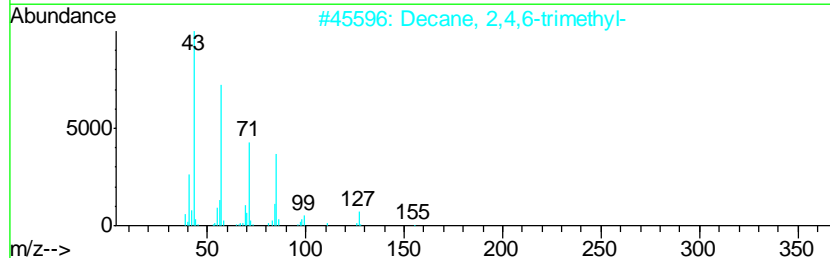
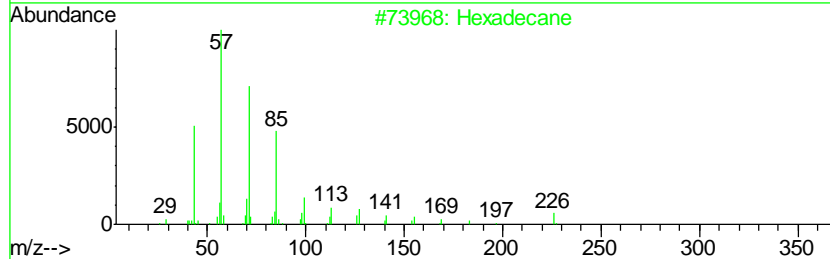
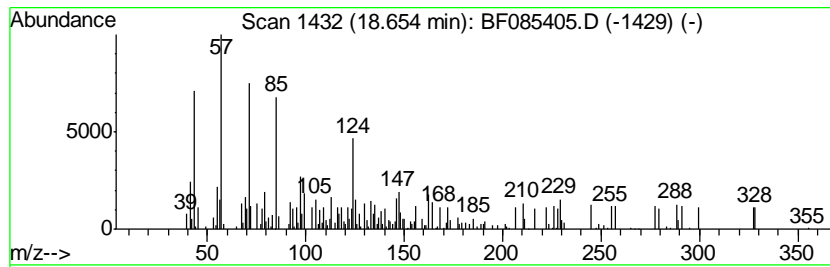
TIC Library : C:\DATABASE\NIST02.L  
 TIC Integration Parameters: LSCINT.P

\*\*\*\*\*  
 Peak Number 16 Decane, 2,4,6-trimethyl- Concentration Rank 16

R.T.	EstConc	Area	Relative to ISTD	R.T.
18.65	2.98 ng	110555	Perylene-d12	15.58

Hit#	of	Tentative ID	MW	MolForm	CAS#	Qual
1	5	Hexadecane	226	C16H34	000544-76-3	64
2		Decane, 2,4,6-trimethyl-	184	C13H28	062108-27-4	43
3		Undecane, 3-methyl-	170	C12H26	001002-43-3	38
4		Octadecane	254	C18H38	000593-45-3	38
5		Docosane	310	C22H46	000629-97-0	38



Data Path : Z:\HPCHEM1\BNA\_F\DATA\BF031116\  
 Data File : BF085405.D  
 Acq On : 12 Mar 2016 8:02  
 Operator : UM/SJ  
 Sample : H1730-06  
 Misc :  
 ALS Vial : 31 Sample Multiplier: 1

Instrument :  
 BNA\_F  
 ClientSampleId :  
 W170TH-SB-17-COMP(0.5-1.5)

Quant Method : Z:\HPCHEM1\BNA\_F\METHODS\8270-BF030316.M  
 Quant Title : ASP BNA STANDARDS FOR 5 POINT CALIBRATION

TIC Library : C:\DATABASE\NIST02.L  
 TIC Integration Parameters: LSCINT.P

TIC Top Hit name	RT	EstConc	Units	Response	--Internal Standard--			
					#	RT	Resp	Conc
2-Pentanone, 4-hy...	5.14	6.2	ng	286312	1	6.94	925472	20.0
unknown6.71	6.71	82.4	ng	3814890	1	6.94	925472	20.0
Hexadecane	10.41	3.1	ng	171693	3	9.98	1123980	20.0
Pentadecane	10.88	4.0	ng	202730	4	11.47	1018880	20.0
n-Hexadecanoic acid	11.99	16.1	ng	820228	4	11.47	1018880	20.0
Octadecanoic acid	12.78	9.3	ng	474548	4	11.47	1018880	20.0
Dichloroacetic ac...	13.95	9.7	ng	829877	5	14.11	1709620	20.0
Octadecane	14.57	3.1	ng	262246	5	14.11	1709620	20.0
9-Octadecenamide, ...	14.86	7.6	ng	284020	6	15.58	743191	20.0
2-Bromo dodecane	15.21	9.3	ng	344081	6	15.58	743191	20.0
Heneicosane	16.04	3.8	ng	139994	6	15.58	743191	20.0
Bromoacetic acid, ...	16.08	5.4	ng	201198	6	15.58	743191	20.0
unknown16.28	16.28	4.7	ng	175135	6	15.58	743191	20.0
unknown17.21	17.21	3.9	ng	144632	6	15.58	743191	20.0
Decane, 2,4,6-tri...	18.65	3.0	ng	110555	6	15.58	743191	20.0