

Data Path : Z:\HPCHEM1\BNA F\DATA\BF031117\
 Data File : BF093572.D
 Acq On : 11 Mar 2017 17:31
 Operator : SJ/MA
 Sample : I2233-01
 Misc :
 ALS Vial : 9 Sample Multiplier: 1

Instrument :
 BNA_F
 ClientSampleId :
 FRAC-TANK-BOTTOM

Integration Parameters: rteint.p
 Integrator: RTE
 Smoothing : ON Filtering: 5
 Sampling : 1 Min Area: 3 % of largest Peak
 Start Thrs: 0.2 Max Peaks: 100
 Stop Thrs : 0 Peak Location: TOP

If leading or trailing edge < 100 prefer < Baseline drop else tangent >
 Peak separation: 5

Method : Z:\HPCHEM1\BNA F\METHODS\8270-BF030717.M
 Title : ASP BNA STANDARDS FOR 5 POINT CALIBRATION

Signal : TIC

peak #	R.T. min	first scan	max scan	last scan	PK TY	peak height	corr. area	corr. % max.	% of total
1	4.881	260	262	278	rBV	745929	1379932	21.46%	2.510%
2	5.327	298	301	318	rBV	4222329	6024551	93.68%	10.957%
3	5.716	334	335	344	rVB	46680	70336	1.09%	0.128%
4	6.390	391	394	396	rBV	4898551	6430708	100.00%	11.695%
5	6.493	401	403	406	rVB	5162220	5044691	78.45%	9.175%
6	6.721	420	423	429	rBV	1005947	1162411	18.08%	2.114%
7	6.870	434	436	439	rBV	3870628	4054688	63.05%	7.374%
8	7.293	471	473	476	rBV	3396661	3599029	55.97%	6.545%
9	7.796	515	517	525	rBV3	32559	115463	1.80%	0.210%
10	8.002	533	535	542	rBV2	1542083	1955345	30.41%	3.556%
11	8.722	597	598	602	rBV	146416	166533	2.59%	0.303%
12	8.824	605	607	611	rVB	86681	93711	1.46%	0.170%
13	9.087	627	630	632	rBV	4972125	6102342	94.89%	11.098%
14	9.487	663	665	667	rVV	529578	517575	8.05%	0.941%
15	9.590	671	674	678	rVB	71050	136332	2.12%	0.248%
16	9.716	681	685	686	rBV	129030	273536	4.25%	0.497%
17	9.750	686	688	690	rVV2	1481148	1796513	27.94%	3.267%
18	9.785	690	691	694	rVB	200357	216338	3.36%	0.393%
19	9.967	705	707	710	rBV	129907	128563	2.00%	0.234%
20	10.310	735	737	739	rBV	170268	180092	2.80%	0.328%
21	10.550	755	758	761	rBV	2779113	2945712	45.81%	5.357%
22	10.676	766	769	772	rVV3	76331	157179	2.44%	0.286%
23	10.790	774	779	786	rVV	197697	666102	10.36%	1.211%
24	11.065	801	803	805	rBV	46563	66274	1.03%	0.121%
25	11.236	816	818	823	rBV2	1695997	2277827	35.42%	4.143%
26	11.613	849	851	853	rVB	131557	156467	2.43%	0.285%
27	11.773	864	865	867	rVB	100723	94329	1.47%	0.172%
28	11.865	871	873	876	rVB2	83992	138905	2.16%	0.253%
29	12.036	886	888	890	rVB	171768	164426	2.56%	0.299%
30	12.196	900	902	905	rVB	89702	94210	1.47%	0.171%
31	12.459	923	925	928	rBV	233327	273342	4.25%	0.497%
32	12.688	942	945	946	rBV	144064	206255	3.21%	0.375%
33	12.825	954	957	959	rBV	4416270	4673591	72.68%	8.500%
34	13.408	1006	1008	1010	rVB	71462	109407	1.70%	0.199%

Data Path : Z:\HPCHEM1\BNA F\DATA\BF031117\
Data File : BF093572.D
Acq On : 11 Mar 2017 17:31
Operator : SJ/MA
Sample : I2233-01
Misc :
ALS Vial : 9 Sample Multiplier: 1

Instrument :
BNA_F
ClientSampleId :
FRAC-TANK-BOTTOM

Integration Parameters: rteint.p
Integrator: RTE
Smoothing : ON Filtering: 5
Sampling : 1 Min Area: 3 % of largest Peak
Start Thrs: 0.2 Max Peaks: 100
Stop Thrs : 0 Peak Location: TOP

If leading or trailing edge < 100 prefer < Baseline drop else tangent >
Peak separation: 5

Method : Z:\HPCHEM1\BNA F\METHODS\8270-BF030717.M
Title : ASP BNA STANDARDS FOR 5 POINT CALIBRATION

35	13.602	1023	1025	1028	rVV3	56879	112743	1.75%	0.205%
36	13.876	1044	1049	1054	rBV	1301668	1679945	26.12%	3.055%
37	14.036	1062	1063	1066	rVB3	75408	70990	1.10%	0.129%
38	14.082	1066	1067	1069	rBV2	59883	71976	1.12%	0.131%
39	14.494	1101	1103	1106	rVB3	76088	123039	1.91%	0.224%
40	14.551	1106	1108	1112	rVB2	67972	100873	1.57%	0.183%
41	15.031	1148	1150	1153	rVB	63378	84495	1.31%	0.154%
42	15.271	1169	1171	1177	rVB	535455	857708	13.34%	1.560%
43	15.739	1209	1212	1215	rVB	116293	189947	2.95%	0.345%
44	16.654	1290	1292	1299	rVB3	76465	220935	3.44%	0.402%

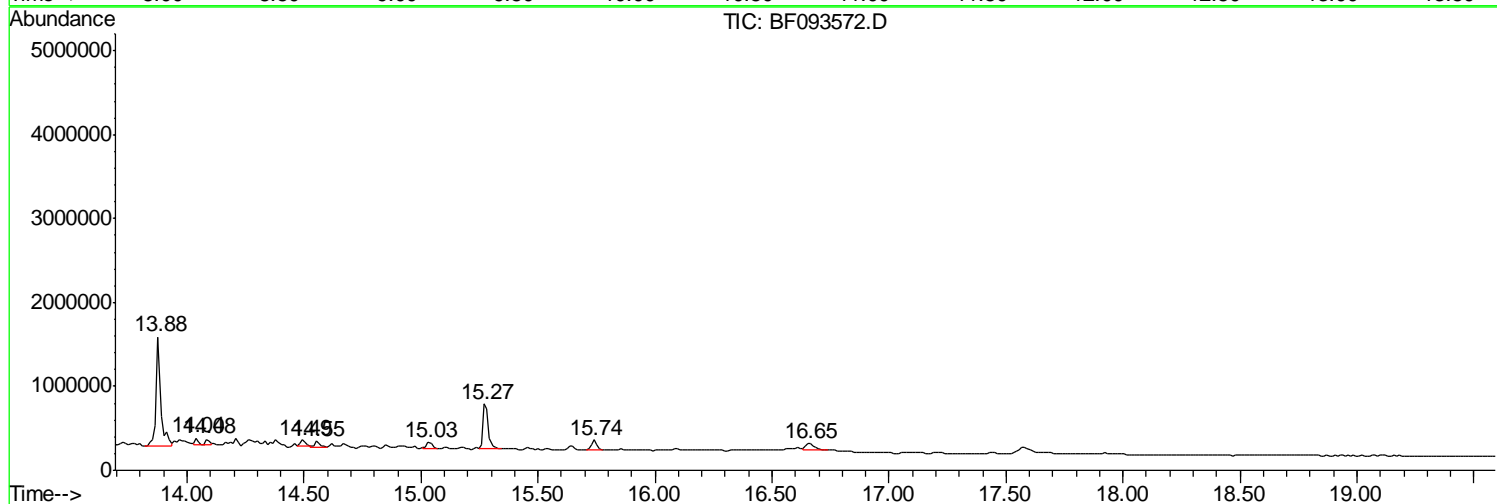
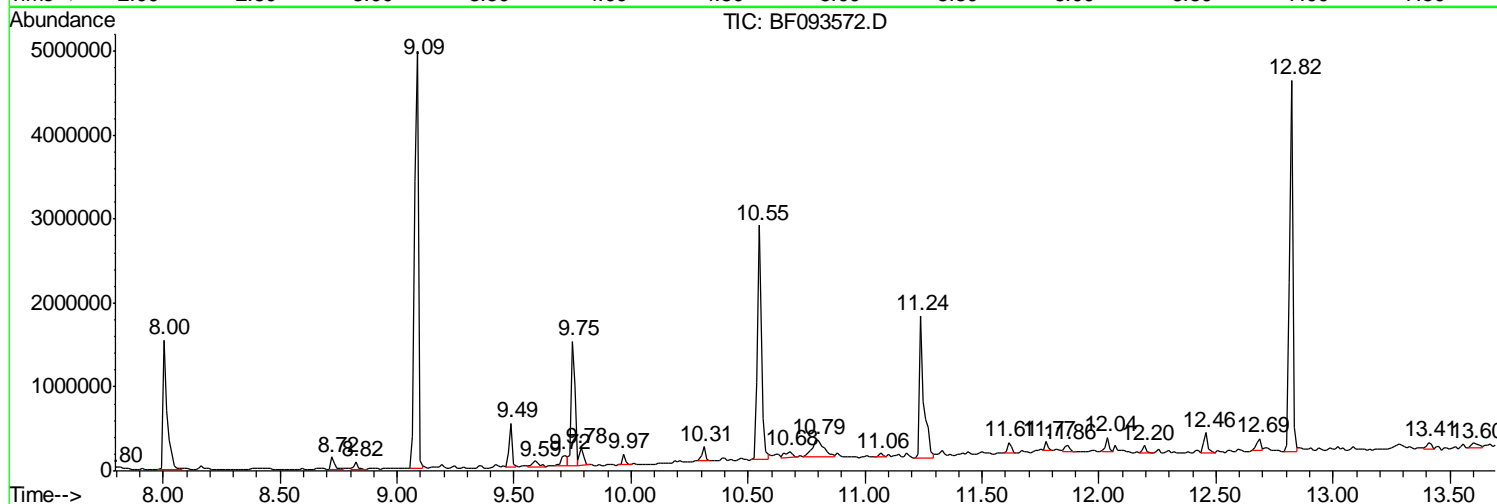
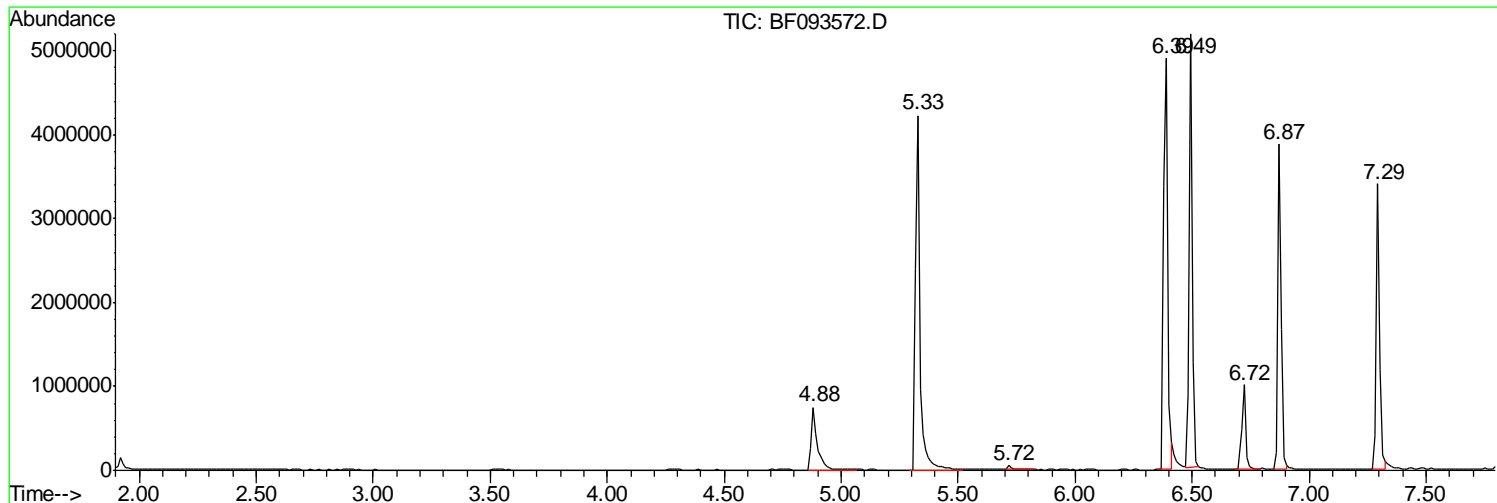
Sum of corrected areas: 54985366

Data Path : Z:\HPCHEM1\BNA F\DATA\BF031117\
 Data File : BF093572.D
 Acq On : 11 Mar 2017 17:31
 Operator : SJ/MA
 Sample : I2233-01
 Misc :
 ALS Vial : 9 Sample Multiplier: 1

Instrument :
 BNA_F
 Client Sampled :
 FRAC-TANK-BOTTOM

Quant Method : Z:\HPCHEM1\BNA F\METHODS\8270-BF030717.M
 Quant Title : ASP BNA STANDARDS FOR 5 POINT CALIBRATION

TIC Library : C:\DATABASE\NIST02.L
 TIC Integration Parameters: LSCINT.P



Data Path : Z:\HPCHEM1\BNA F\DATA\BF031117\
 Data File : BF093572.D
 Acq On : 11 Mar 2017 17:31
 Operator : SJ/MA
 Sample : I2233-01
 Misc :
 ALS Vial : 9 Sample Multiplier: 1

Instrument :
 BNA_F
 ClientSampleID :
 FRAC-TANK-BOTTOM

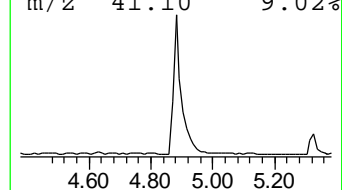
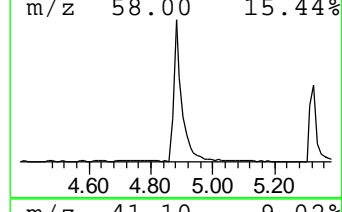
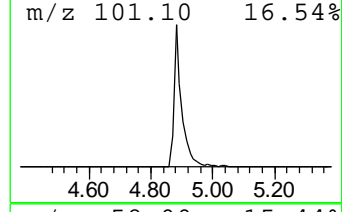
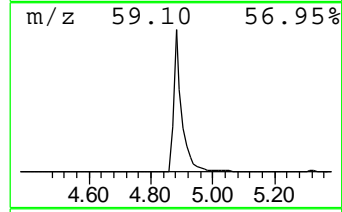
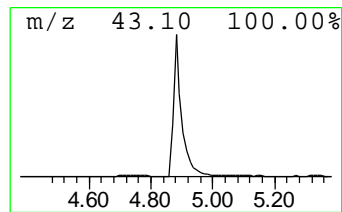
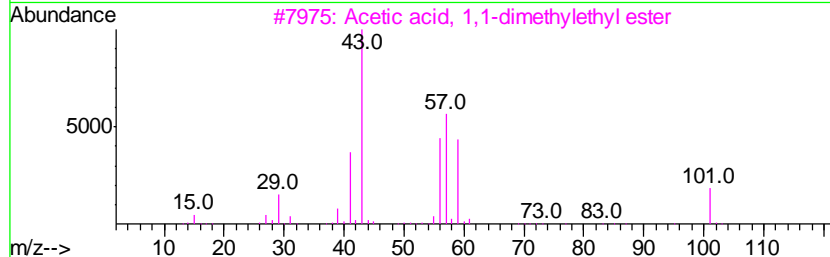
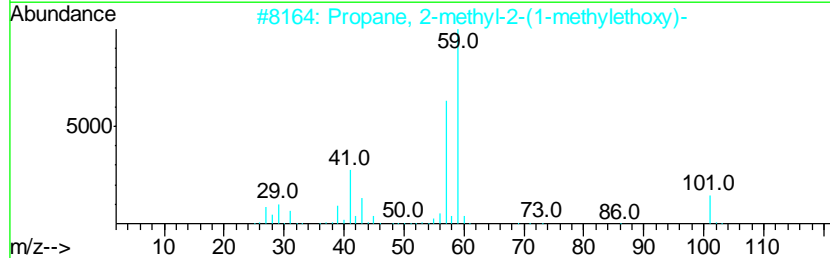
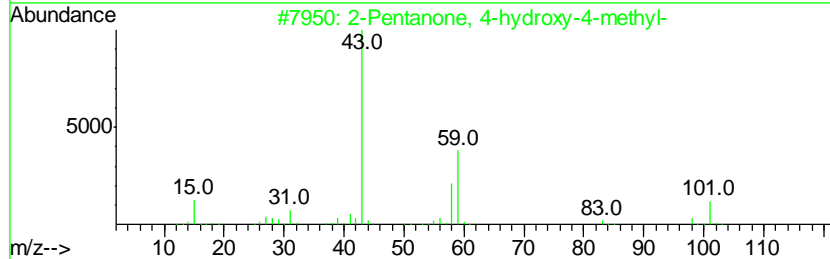
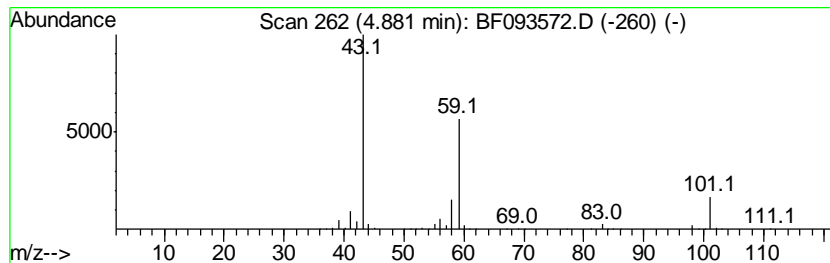
Quant Method : Z:\HPCHEM1\BNA F\METHODS\8270-BF030717.M
 Quant Title : ASP BNA STANDARDS FOR 5 POINT CALIBRATION

TIC Library : C:\DATABASE\NIST02.L
 TIC Integration Parameters: LSCINT.P

 Peak Number 1 2-Pentanone, 4-hydroxy-4-me... Concentration Rank 3

R.T.	EstConc	Area	Relative to ISTD	R.T.
4.88	23.74 ng	1379930	1,4-Dichlorobenzene-d4	6.72

Hit#	of	Tentative ID	MW	MolForm	CAS#	Qual
1	5	2-Pentanone, 4-hydroxy-4-methyl-	116	C6H12O2	000123-42-2	59
2		Propane, 2-methyl-2-(1-methyleth...	116	C7H16O	017348-59-3	42
3		Acetic acid, 1,1-dimethylethyl e...	116	C6H12O2	000540-88-5	39
4		2-Hexanol, 2-methyl-	116	C7H16O	000625-23-0	33
5		3-Hexanol, 4-methyl-	116	C7H16O	000615-29-2	33



Data Path : Z:\HPCHEM1\BNA F\DATA\BF031117\
 Data File : BF093572.D
 Acq On : 11 Mar 2017 17:31
 Operator : SJ/MA
 Sample : I2233-01
 Misc :
 ALS Vial : 9 Sample Multiplier: 1

Instrument :
 BNA_F
 ClientSampleId :
 FRAC-TANK-BOTTOM

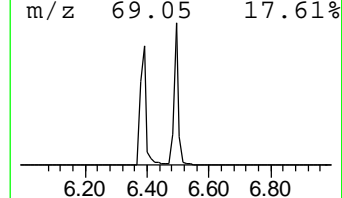
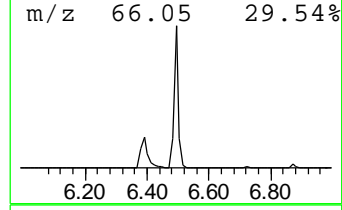
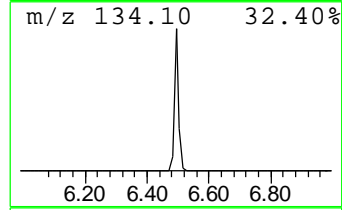
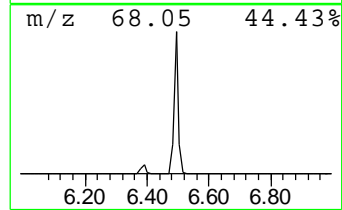
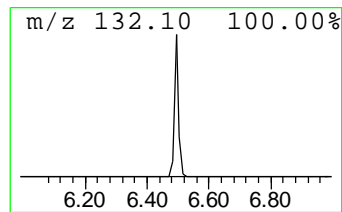
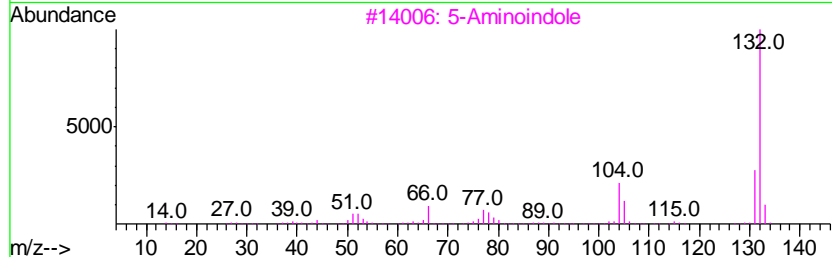
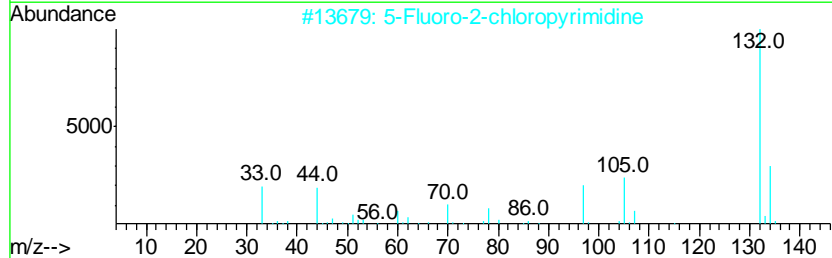
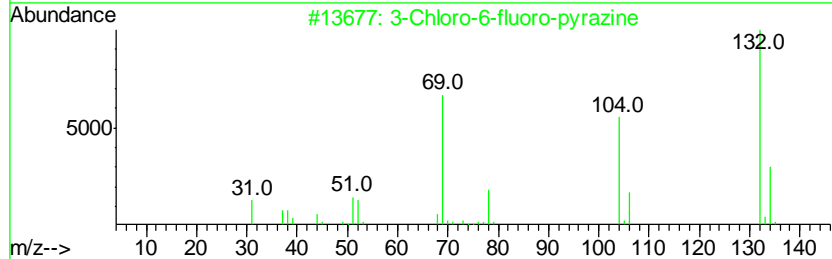
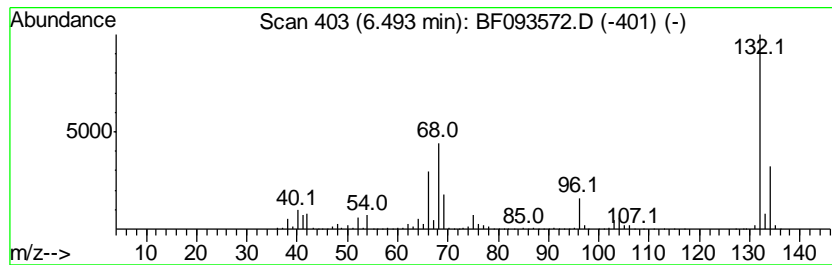
Quant Method : Z:\HPCHEM1\BNA F\METHODS\8270-BF030717.M
 Quant Title : ASP BNA STANDARDS FOR 5 POINT CALIBRATION

TIC Library : C:\DATABASE\NIST02.L
 TIC Integration Parameters: LSCINT.P

 Peak Number 2 unknown6.49 Concentration Rank 1

R.T.	EstConc	Area	Relative to ISTD	R.T.
6.49	86.80 ng	5044690	1,4-Dichlorobenzene-d4	6.72

Hit#	of	Tentative ID	MW	MolForm	CAS#	Qual
1	5	3-Chloro-6-fluoro-pyrazine	132	C4H2ClFN2	1000146-10-7	27
2		5-Fluoro-2-chloropyrimidine	132	C4H2ClFN2	062802-42-0	12
3		5-Aminoindole	132	C8H8N2	005192-03-0	12
4		Tranylcypromine-propionyl	189	C12H15NO	1000123-86-3	10
5		Xenon	132	Xe	007440-63-3	9



Data Path : Z:\HPCHEM1\BNA F\DATA\BF031117\
 Data File : BF093572.D
 Acq On : 11 Mar 2017 17:31
 Operator : SJ/MA
 Sample : I2233-01
 Misc :
 ALS Vial : 9 Sample Multiplier: 1

Instrument :
 BNA_F
 ClientSampleId :
 FRAC-TANK-BOTTOM

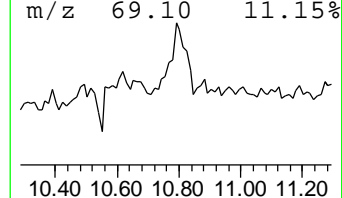
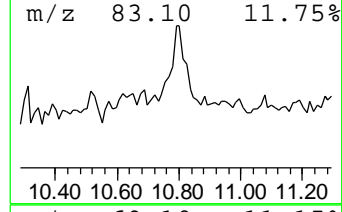
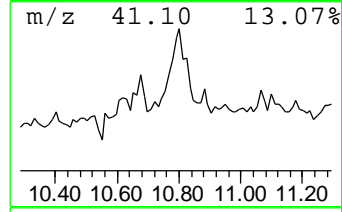
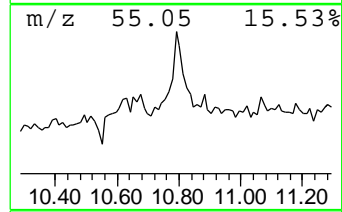
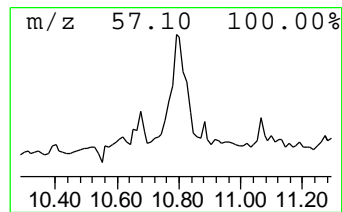
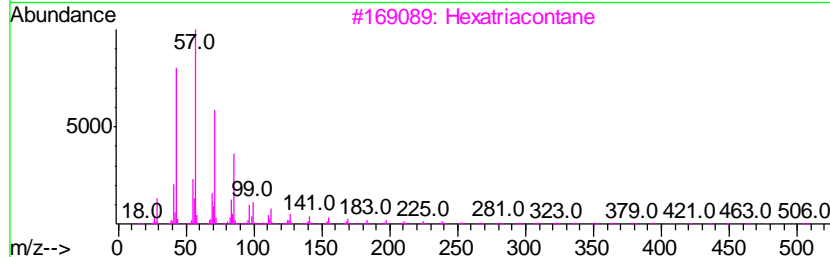
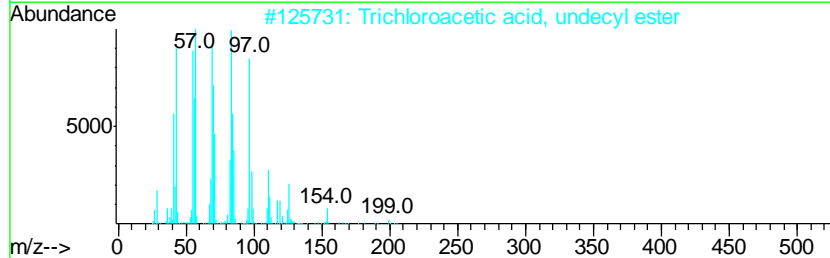
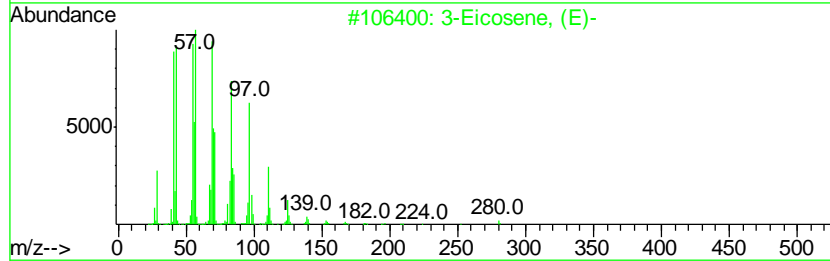
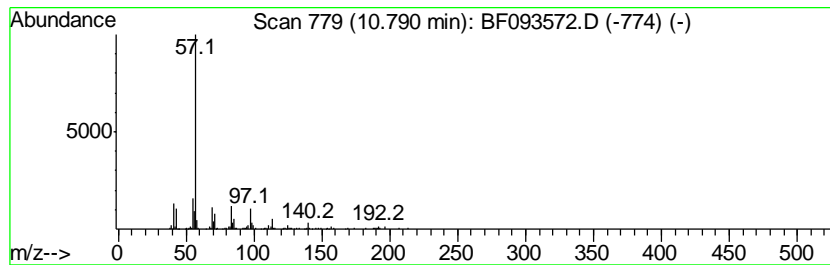
Quant Method : Z:\HPCHEM1\BNA F\METHODS\8270-BF030717.M
 Quant Title : ASP BNA STANDARDS FOR 5 POINT CALIBRATION

TIC Library : C:\DATABASE\NIST02.L
 TIC Integration Parameters: LSCINT.P

 Peak Number 4 3-Eicosene, (E)- Concentration Rank 4

R.T.	EstConc	Area	Relative to ISTD	R.T.
10.79	5.85 ng	666102	Phenanthrene-d10	11.24

Hit#	of	Tentative ID	MW	MolForm	CAS#	Qual
1	5	3-Eicosene, (E)-	280	C20H40	074685-33-9	59
2		Trichloroacetic acid, undecyl ester	316	C13H23Cl3O2	074339-49-4	59
3		Hexatriacontane	507	C36H74	000630-06-8	56
4		Tetratetracontane	619	C44H90	007098-22-8	56
5		Nonane, 2,2,4,4,6,8,8-heptamethyl-	226	C16H34	004390-04-9	47



Data Path : Z:\HPCHEM1\BNA F\DATA\BF031117\
 Data File : BF093572.D
 Acq On : 11 Mar 2017 17:31
 Operator : SJ/MA
 Sample : I2233-01
 Misc :
 ALS Vial : 9 Sample Multiplier: 1

Instrument :
 BNA_F
 ClientSampleID :
 FRAC-TANK-BOTTOM

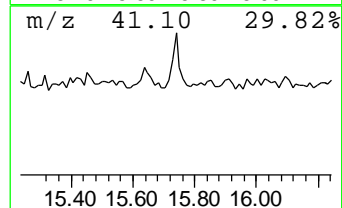
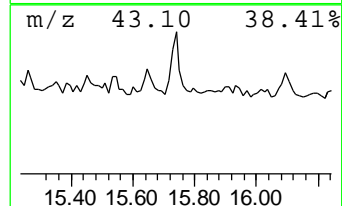
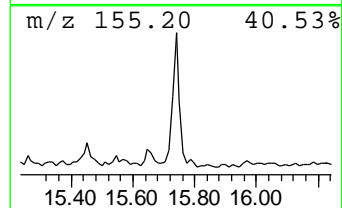
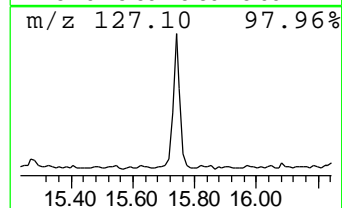
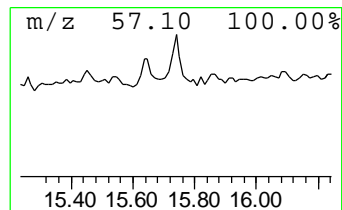
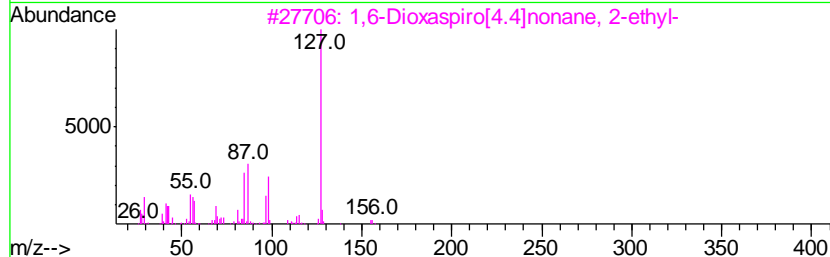
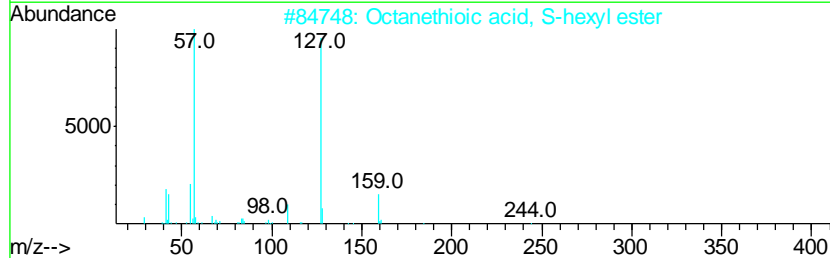
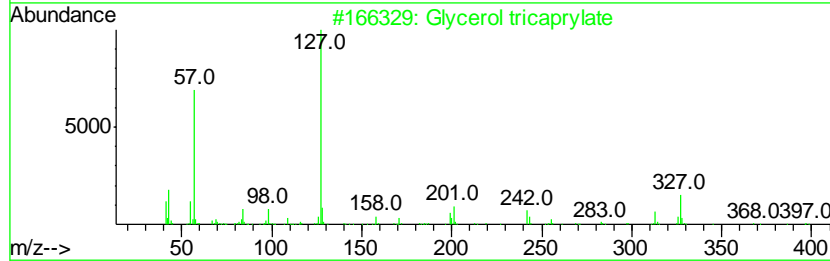
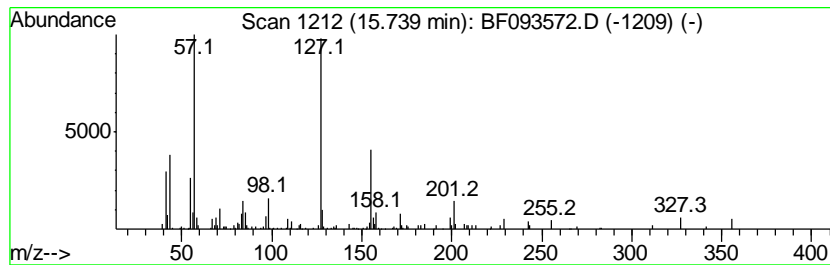
Quant Method : Z:\HPCHEM1\BNA F\METHODS\8270-BF030717.M
 Quant Title : ASP BNA STANDARDS FOR 5 POINT CALIBRATION

TIC Library : C:\DATABASE\NIST02.L
 TIC Integration Parameters: LSCINT.P

 Peak Number 5 Glycerol tricaprylate Concentration Rank 6

R.T.	EstConc	Area	Relative to ISTD	R.T.
15.74	4.43 ng	189947	Perylene-d12	15.28

Hit#	of	Tentative ID	MW	MolForm	CAS#	Qual
1	5	Glycerol tricaprylate	470	C27H50O6	000538-23-8	53
2		Octanethioic acid, S-hexyl ester	244	C14H28OS	055590-85-7	47
3		1,6-Dioxaspiro[4.4]nonane, 2-ethyl-	156	C9H16O2	038401-84-2	46
4		Octanoic acid, 2,6-dibromo-4-cya...	401	C15H17Br2NO2	001689-99-2	43
5		Hexanoic acid, 2-ethyl-, anhydride	270	C16H30O3	036765-89-6	43



Data Path : Z:\HPCHEM1\BNA F\DATA\BF031117\
 Data File : BF093572.D
 Acq On : 11 Mar 2017 17:31
 Operator : SJ/MA
 Sample : I2233-01
 Misc :
 ALS Vial : 9 Sample Multiplier: 1

Instrument :
 BNA_F
 ClientSampled :
 FRAC-TANK-BOTTOM

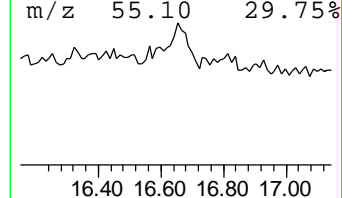
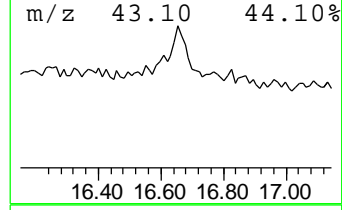
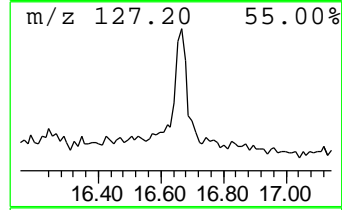
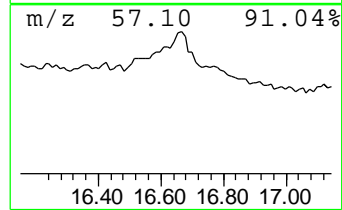
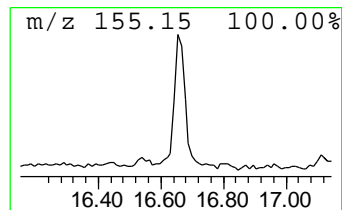
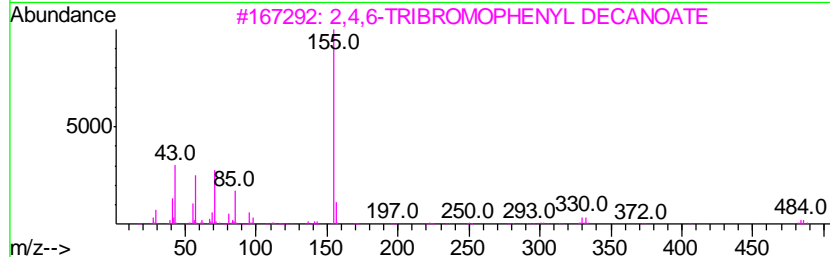
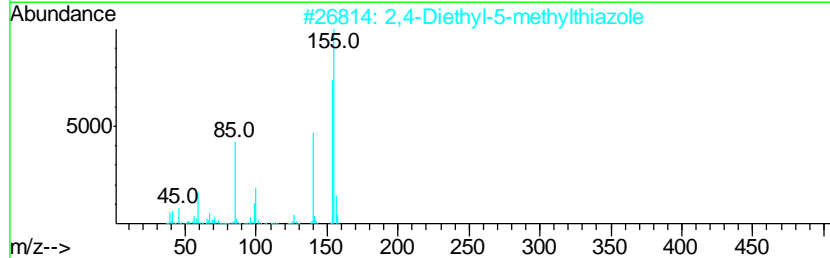
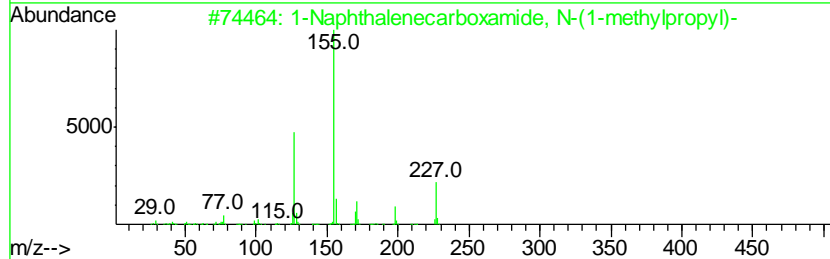
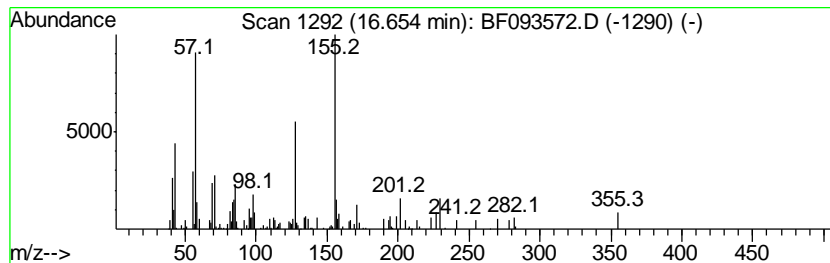
Quant Method : Z:\HPCHEM1\BNA F\METHODS\8270-BF030717.M
 Quant Title : ASP BNA STANDARDS FOR 5 POINT CALIBRATION

TIC Library : C:\DATABASE\NIST02.L
 TIC Integration Parameters: LSCINT.P

 Peak Number 6 1-Naphthalenecarboxamide, N... Concentration Rank 5

R.T.	EstConc	Area	Relative to ISTD	R.T.
16.65	5.15 ng	220935	Perylene-d12	15.28

Hit#	of	Tentative ID	MW	MolForm	CAS#	Qual
1	5	1-Naphthalenecarboxamide, N-(1-m...	227	C15H17NO	031609-18-4	50
2		2,4-Diethyl-5-methylthiazole	155	C8H13NS	052414-89-8	49
3		2,4,6-TRIBROMOPHENYL DECANOATE	482	C16H21Br3O2	1000233-09-1	43
4		6-Amino-1,3-dimethyluracil	155	C6H9N3O2	006642-31-5	43
5		Imidazole, 4-amino-5-ethoxycarbo...	155	C6H9N3O2	021190-16-9	43



Data Path : Z:\HPCHEM1\BNA_F\DATA\BF031117\
Data File : BF093572.D
Acq On : 11 Mar 2017 17:31
Operator : SJ/MA
Sample : I2233-01
Misc :
ALS Vial : 9 Sample Multiplier: 1

Instrument :
BNA_F
ClientSampleId :
FRAC-TANK-BOTTOM

Quant Method : Z:\HPCHEM1\BNA_F\METHODS\8270-BF030717.M
Quant Title : ASP BNA STANDARDS FOR 5 POINT CALIBRATION

TIC Library : C:\DATABASE\NIST02.L
TIC Integration Parameters: LSCINT.P

TIC Top Hit name	RT	EstConc	Units	Response	--Internal Standard--			
					#	RT	Resp	Conc
2-Pentanone, 4-hy...	4.88	23.7	ng	1379930	1	6.72	1162410	20.0
unknown6.49	6.49	86.8	ng	5044690	1	6.72	1162410	20.0
3-Eicosene, (E)-	10.79	5.8	ng	666102	4	11.24	2277830	20.0
Glycerol tricapry...	15.74	4.4	ng	189947	6	15.28	857708	20.0
1-Naphthalenecarb...	16.65	5.2	ng	220935	6	15.28	857708	20.0