

Data Path : Z:\SVOASRV\HPCHEM1\BNA F\DATA\BF031120\
 Data File : BF119351.D
 Acq On : 11 Mar 2020 17:33
 Operator : CG/JU
 Sample : L1864-07
 Misc :
 ALS Vial : 5 Sample Multiplier: 1

Instrument :
 BNA_F
 ClientSampleId :
 SP-3

Quant Time: Mar 11 18:10:12 2020
 Quant Method : Z:\SVOASRV\HPCHEM1\BNA F\METHODS\8270-BF022020.M
 Quant Title : ASP BNA STANDARDS FOR 5 POINT CALIBRATION
 QLast Update : Fri Mar 06 23:38:46 2020
 Response via : Initial Calibration

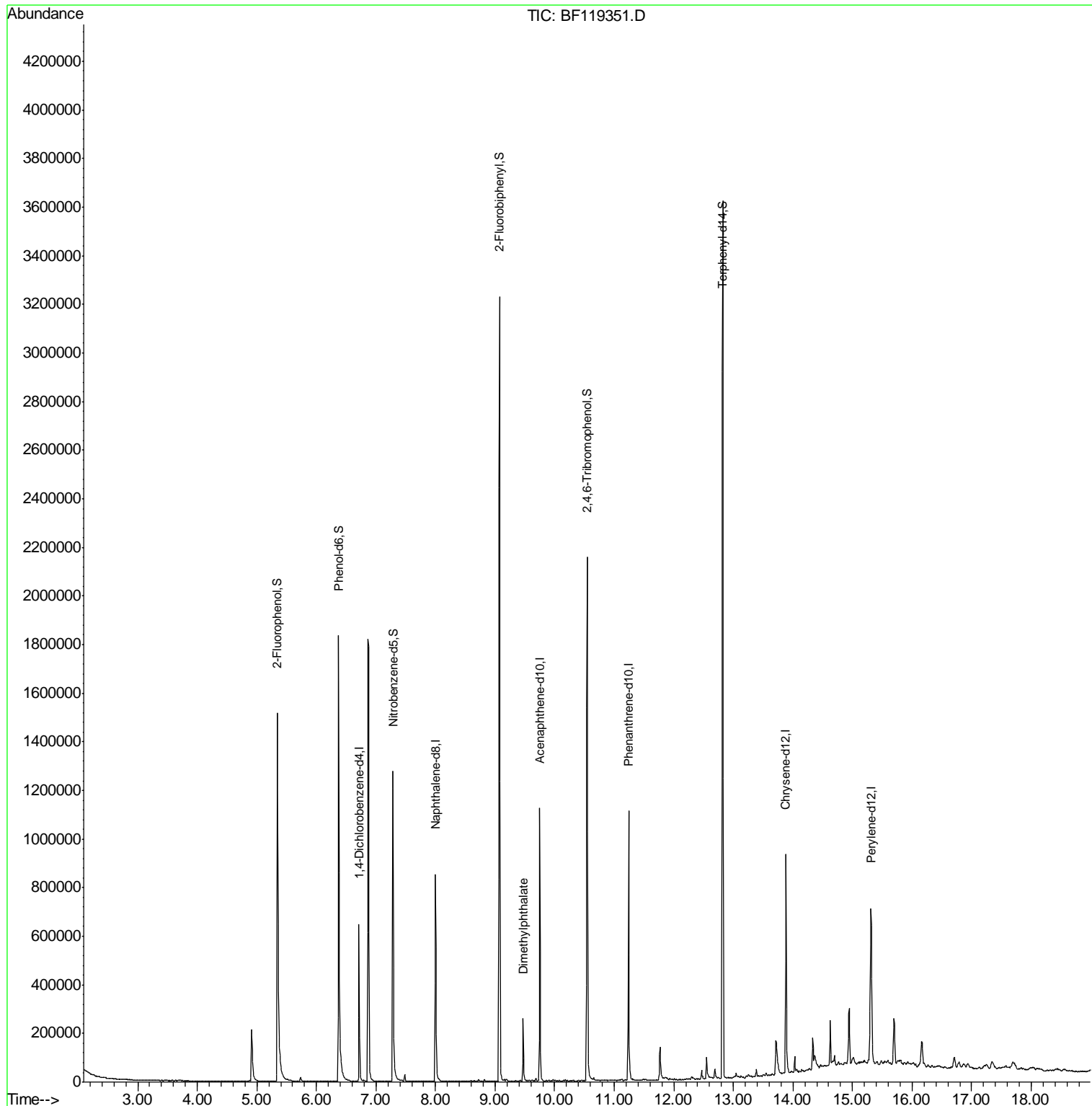
Internal Standards	R.T.	QIon	Response	Conc	Units	Dev(Min)
1) 1,4-Dichlorobenzene-d4	6.72	152	106553	20.00	ng	0.00
21) Naphthalene-d8	8.00	136	410889	20.00	ng	-0.01
39) Acenaphthene-d10	9.75	164	229545	20.00	ng	-0.01
64) Phenanthrene-d10	11.24	188	435850	20.00	ng	0.00
76) Chrysene-d12	13.88	240	301818	20.00	ng	0.00
87) Perylene-d12	15.31	264	303173	20.00	ng	0.00
System Monitoring Compounds						
5) 2-Fluorophenol	5.35	112	619069	97.09	ng	0.00
7) Phenol-d6	6.37	99	781821	100.82	ng	0.00
23) Nitrobenzene-d5	7.29	82	513533	65.99	ng	0.00
42) 2,4,6-Tribromophenol	10.55	330	283320	94.35	ng	-0.01
45) 2-Fluorobiphenyl	9.07	172	995531	63.89	ng	-0.01
79) Terphenyl-d14	12.82	244	1273193	72.63	ng	0.00
Target Compounds						Qvalue
50) Dimethylphthalate	9.47	163	123219	7.020	ng	98

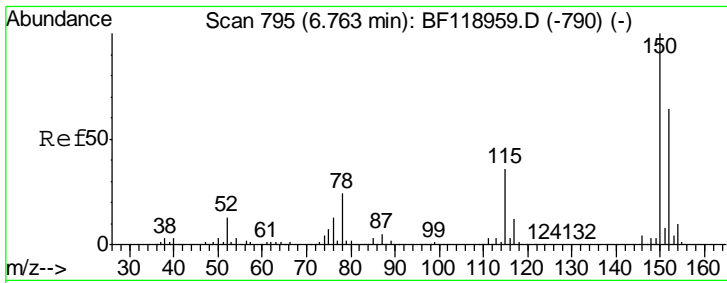
(#) = qualifier out of range (m) = manual integration (+) = signals summed

Data Path : Z:\SVOASRV\HPCHEM1\BNA F\DATA\BF031120\
 Data File : BF119351.D
 Acq On : 11 Mar 2020 17:33
 Operator : CG/JU
 Sample : L1864-07
 Misc :
 ALS Vial : 5 Sample Multiplier: 1

Instrument :
 BNA_F
 ClientSampled :
 SP-3

Quant Time: Mar 11 18:10:12 2020
 Quant Method : Z:\SVOASRV\HPCHEM1\BNA F\METHODS\8270-BF022020.M
 Quant Title : ASP BNA STANDARDS FOR 5 POINT CALIBRATION
 QLast Update : Fri Mar 06 23:38:46 2020
 Response via : Initial Calibration

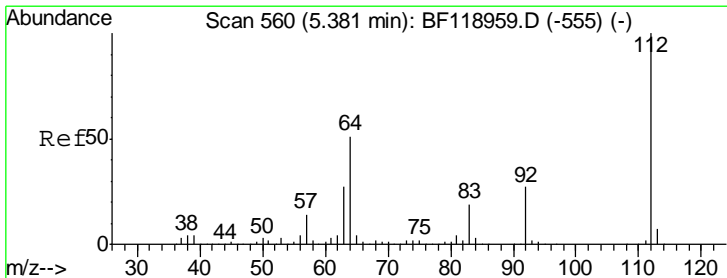
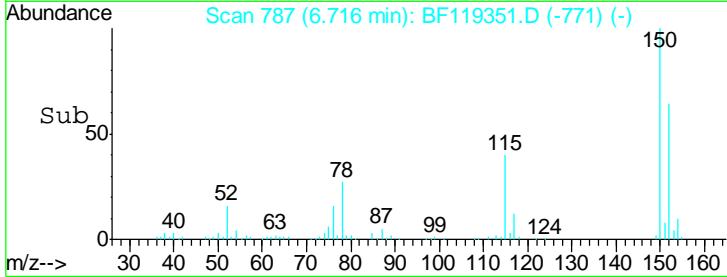
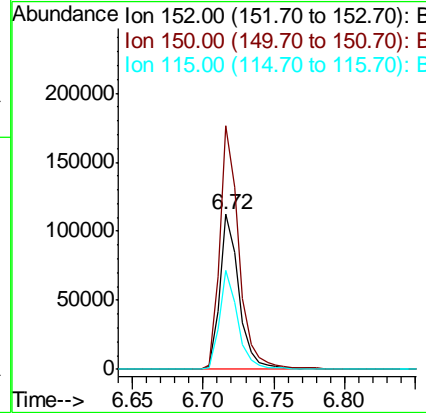
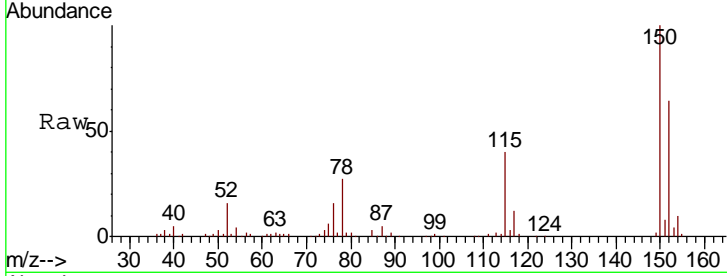




#1
 1,4-Dichlorobenzene-d4
 Concen: 20.000 ng
 RT: 6.72 min Scan# 787
 Delta R.T. -0.01 min
 Lab File: BF119351.D
 Acq: 11 Mar 2020 17:33

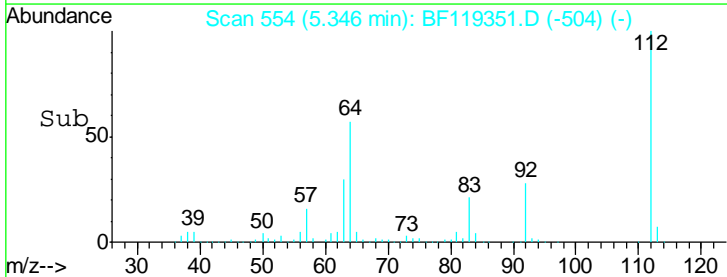
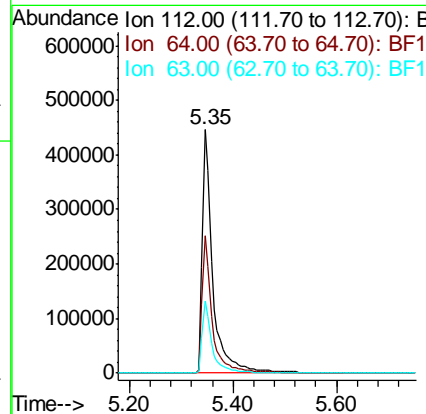
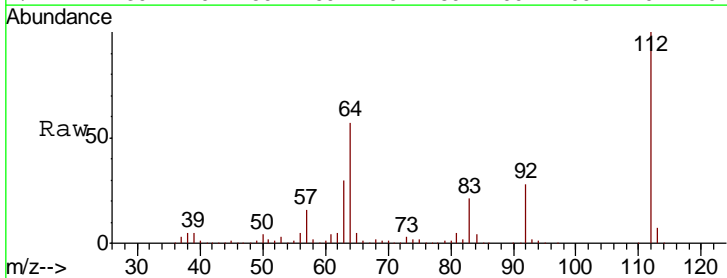
Instrument :
 BNA_F
 ClientSampleID :
 SP-3

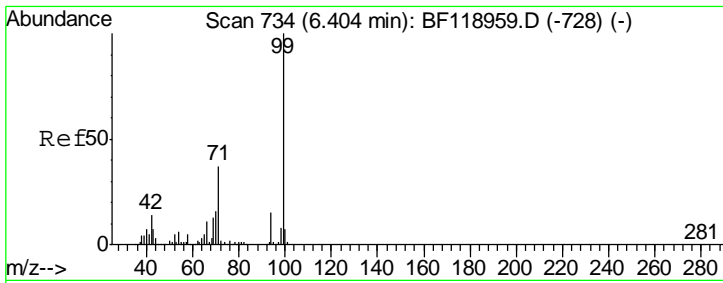
Tgt Ion	Resp	Lower	Upper
152	106553		
150	156.9	123.0	184.6
115	63.5	49.5	74.3



#5
 2-Fluorophenol
 Concen: 97.095 ng
 RT: 5.35 min Scan# 554
 Delta R.T. -0.01 min
 Lab File: BF119351.D
 Acq: 11 Mar 2020 17:33

Tgt Ion	Resp	Lower	Upper
112	619069		
64	56.6	45.0	67.4
63	29.6	24.2	36.4

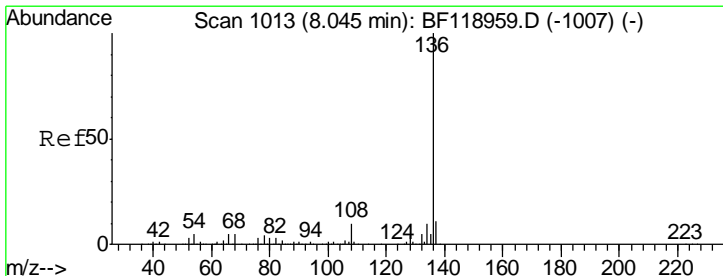
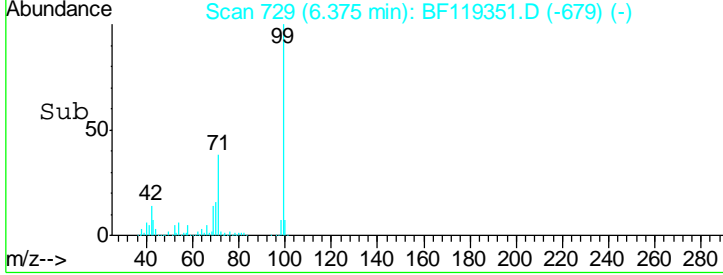
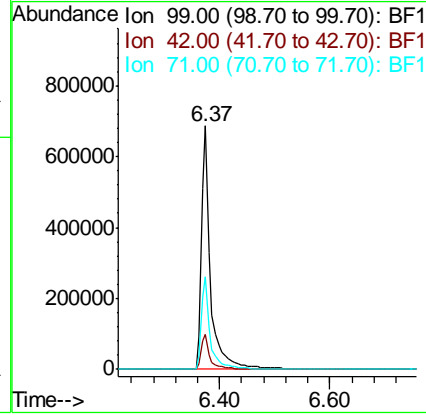
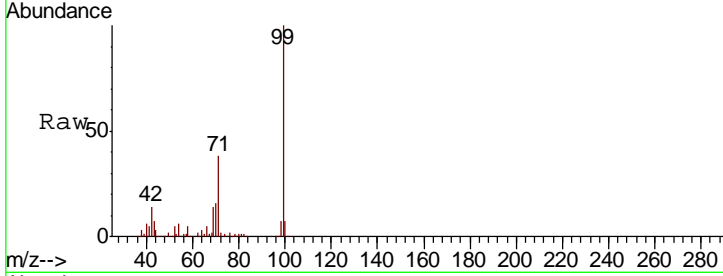




#7
 Phenol-d6
 Concen: 100.824 ng
 RT: 6.37 min Scan# 729
 Delta R.T. -0.01 min
 Lab File: BF119351.D
 Acq: 11 Mar 2020 17:33

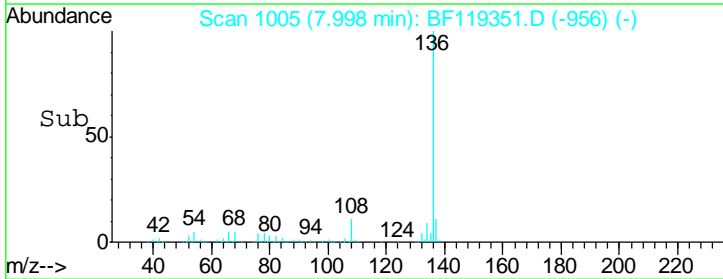
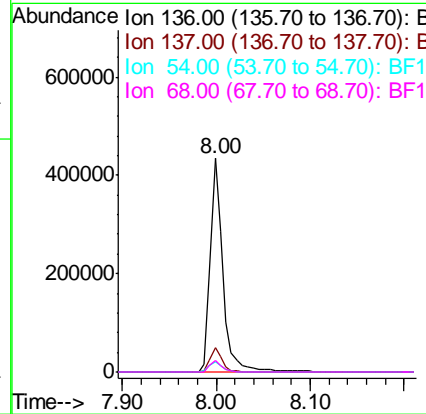
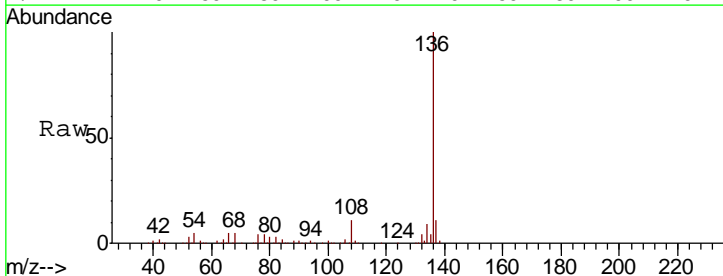
Instrument :
 BNA_F
 ClientSampled :
 SP-3

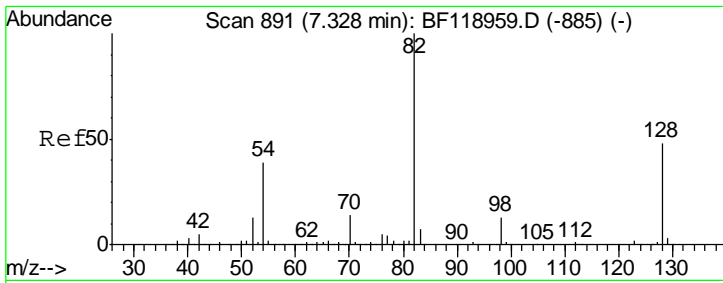
Tgt Ion	Resp	Lower	Upper
99	781821		
42	14.4	12.6	18.8
71	38.2	31.0	46.4



#21
 Naphthalene-d8
 Concen: 20.000 ng
 RT: 8.00 min Scan# 1005
 Delta R.T. -0.01 min
 Lab File: BF119351.D
 Acq: 11 Mar 2020 17:33

Tgt Ion	Resp	Lower	Upper
136	410889		
137	11.1	8.8	13.2
54	5.1	3.8	5.6
68	5.2	3.9	5.9

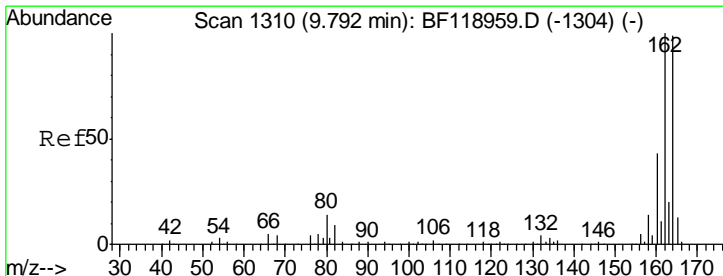
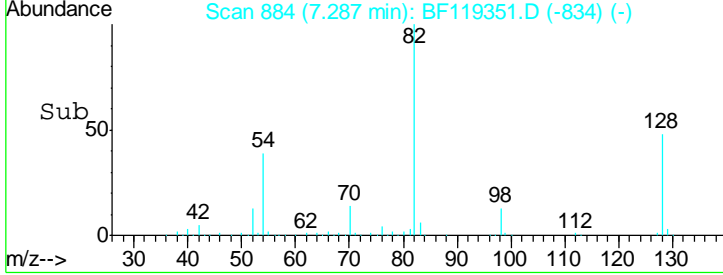
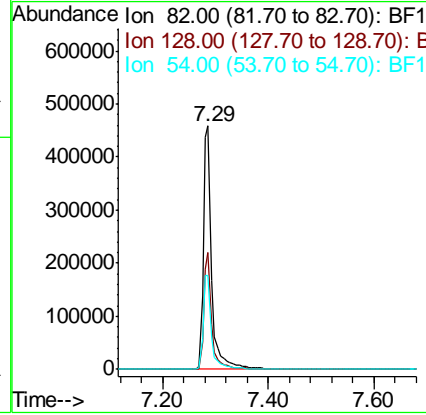
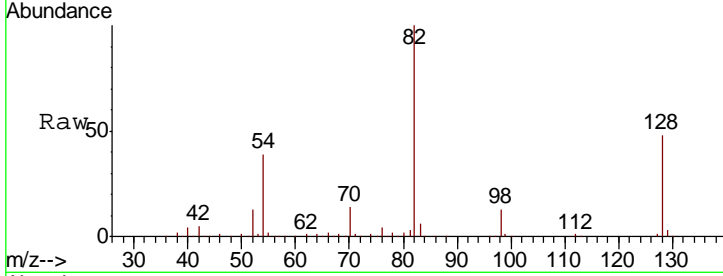




#23
 Nitrobenzene-d5
 Concen: 65.990 ng
 RT: 7.29 min Scan# 884
 Delta R.T. -0.01 min
 Lab File: BF119351.D
 Acq: 11 Mar 2020 17:33

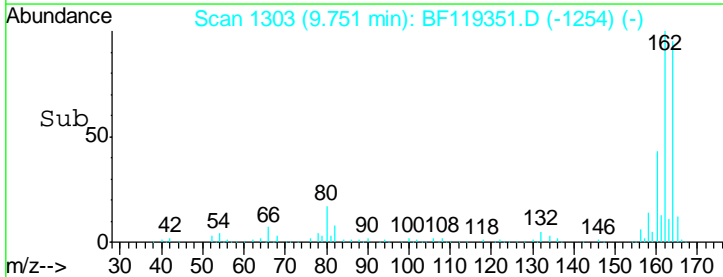
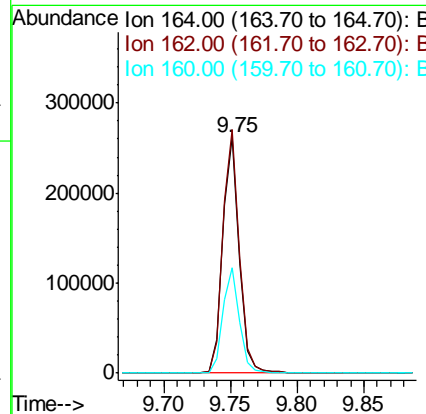
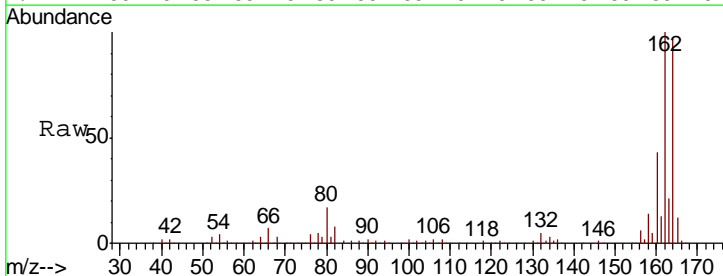
Instrument :
 BNA_F
ClientSampled :
 SP-3

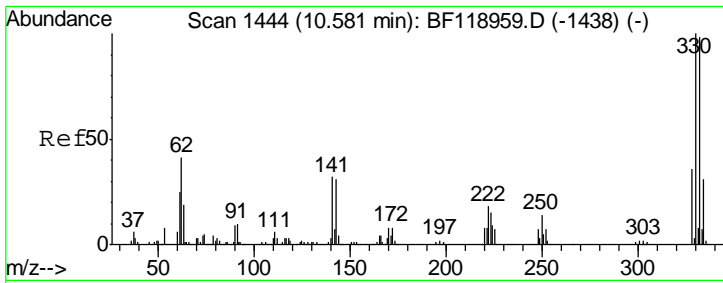
Tgt Ion	Resp	Lower	Upper
82	513533		
128	48.0	37.9	56.9
54	38.7	33.4	50.2



#39
 Acenaphthene-d10
 Concen: 20.000 ng
 RT: 9.75 min Scan# 1303
 Delta R.T. -0.01 min
 Lab File: BF119351.D
 Acq: 11 Mar 2020 17:33

Tgt Ion	Resp	Lower	Upper
164	229545		
162	103.5	81.8	122.8
160	44.7	36.0	54.0

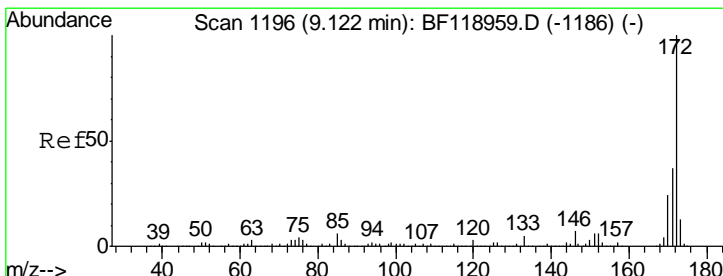
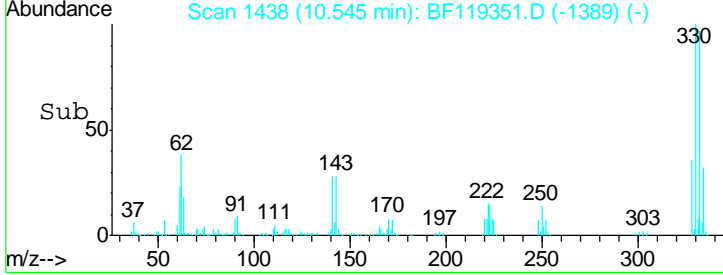
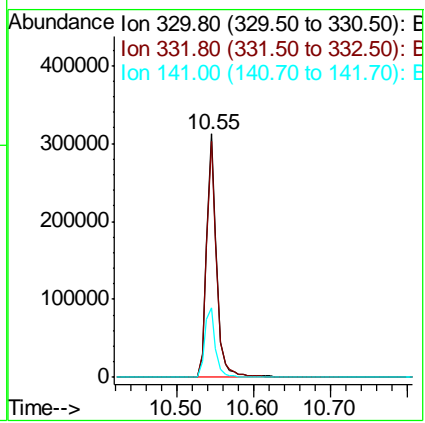
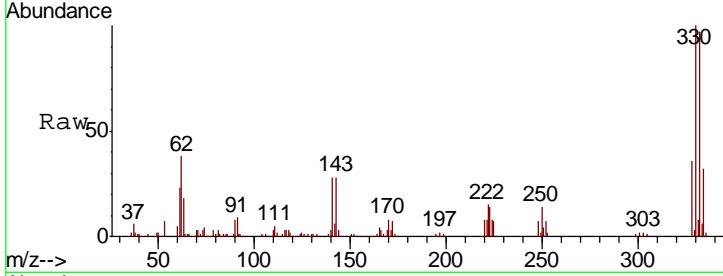




#42
 2,4,6-Tribromophenol
 Concen: 94.351 ng
 RT: 10.55 min Scan# 1438
 Delta R.T. -0.01 min
 Lab File: BF119351.D
 Acq: 11 Mar 2020 17:33

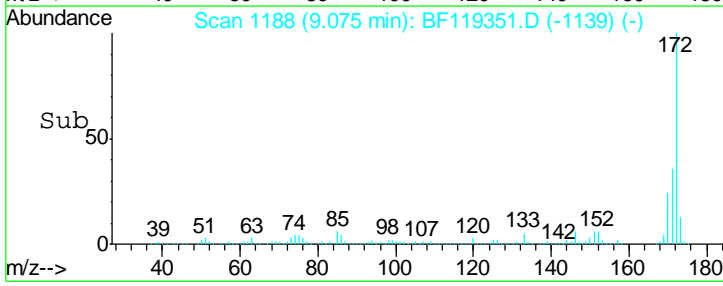
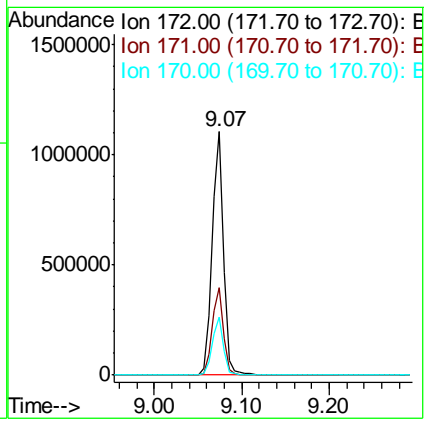
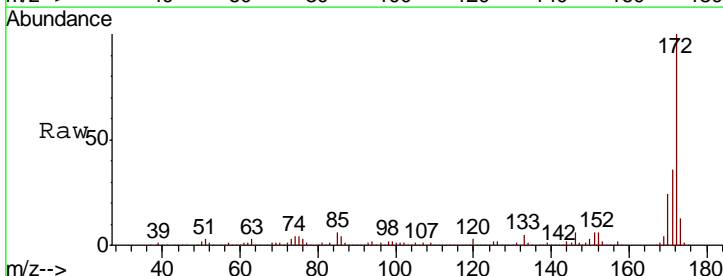
Instrument :
 BNA_F
 ClientSampled :
 SP-3

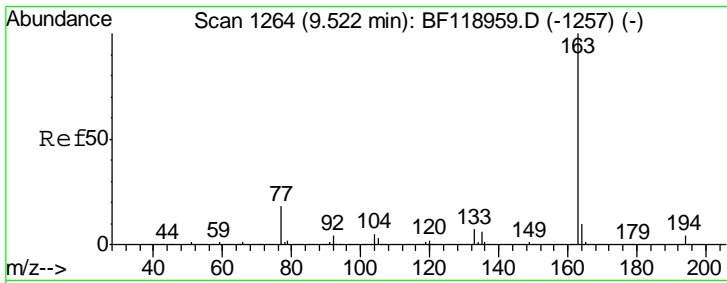
Tgt Ion	Resp	Lower	Upper
330	100		
332	96.9	76.0	114.0
141	31.0	22.9	34.3



#45
 2-Fluorobiphenyl
 Concen: 63.891 ng
 RT: 9.07 min Scan# 1188
 Delta R.T. -0.01 min
 Lab File: BF119351.D
 Acq: 11 Mar 2020 17:33

Tgt Ion	Resp	Lower	Upper
172	100		
171	36.1	30.6	45.8
170	23.7	20.2	30.2

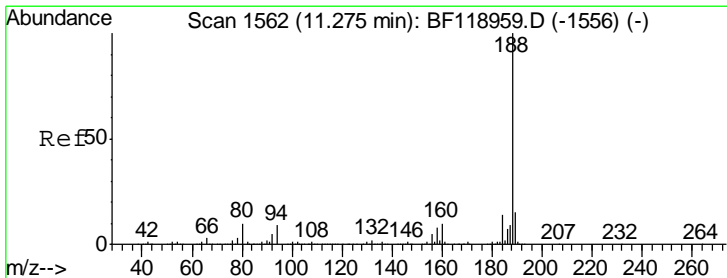
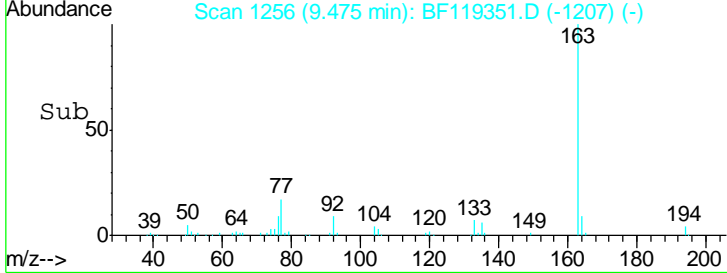
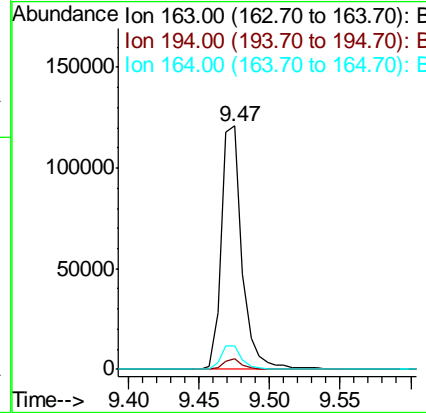
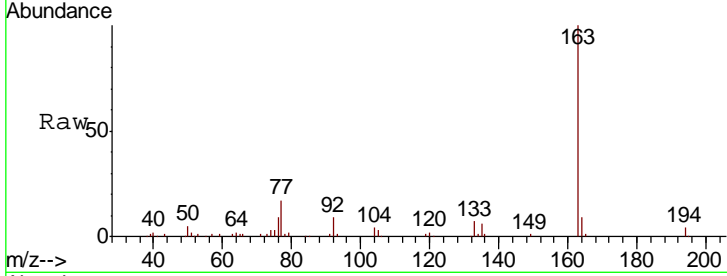




#50
 Dimethylphthalate
 Concen: 7.020 ng
 RT: 9.47 min Scan# 1256
 Delta R.T. -0.01 min
 Lab File: BF119351.D
 Acq: 11 Mar 2020 17:33

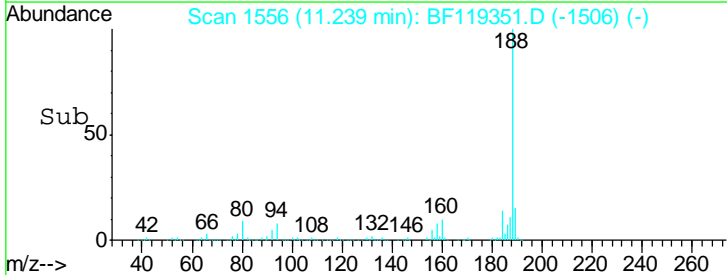
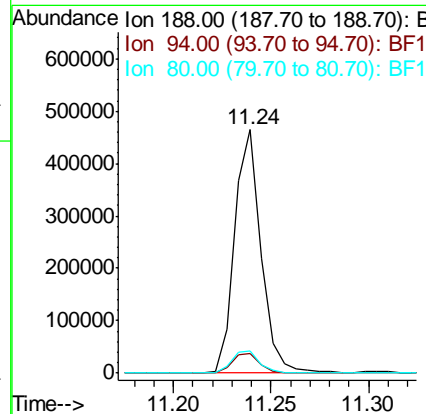
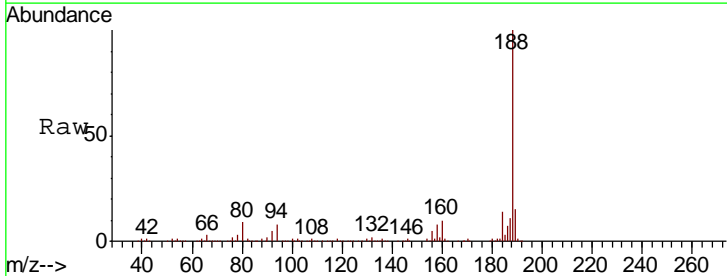
Instrument :
 BNA_F
 ClientSampled :
 SP-3

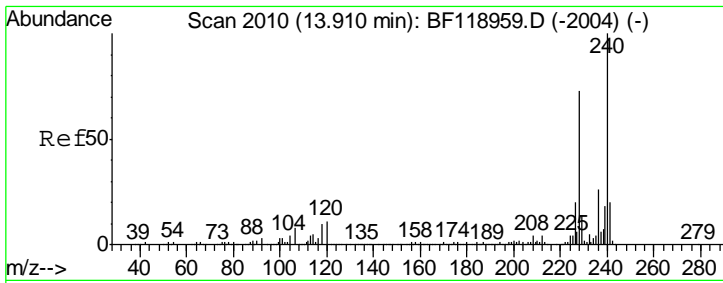
Tgt Ion	Resp	Lower	Upper
163	123219		
194	4.4	3.5	5.3
164	9.5	8.4	12.6



#64
 Phenanthrene-d10
 Concen: 20.000 ng
 RT: 11.24 min Scan# 1556
 Delta R.T. -0.01 min
 Lab File: BF119351.D
 Acq: 11 Mar 2020 17:33

Tgt Ion	Resp	Lower	Upper
188	435850		
94	8.2	7.1	10.7
80	9.1	7.8	11.8

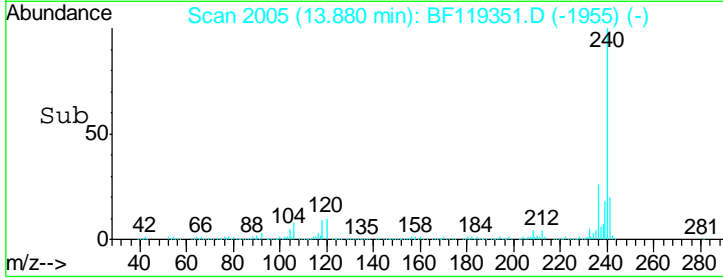
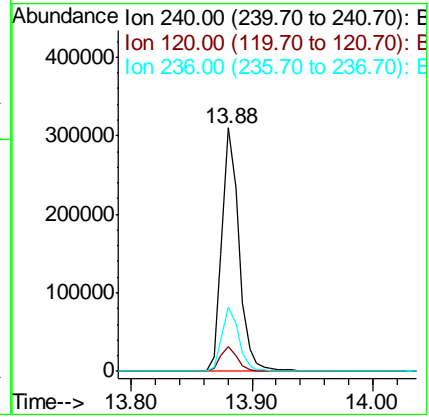
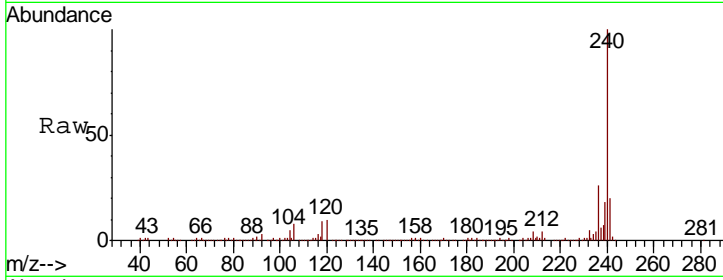




#76
 Chrysene-d12
 Concen: 20.000 ng
 RT: 13.88 min Scan# 2005
 Delta R.T. -0.01 min
 Lab File: BF119351.D
 Acq: 11 Mar 2020 17:33

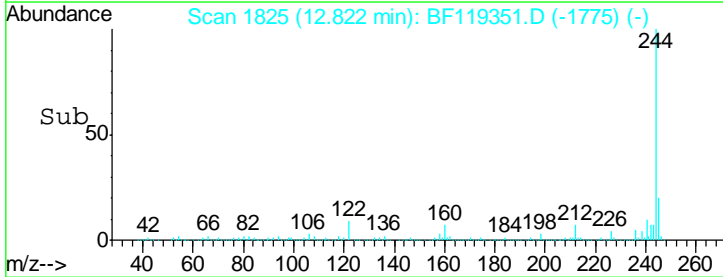
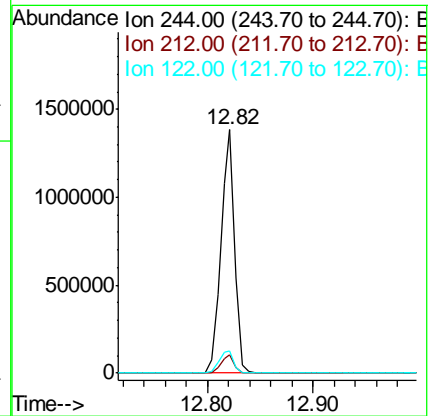
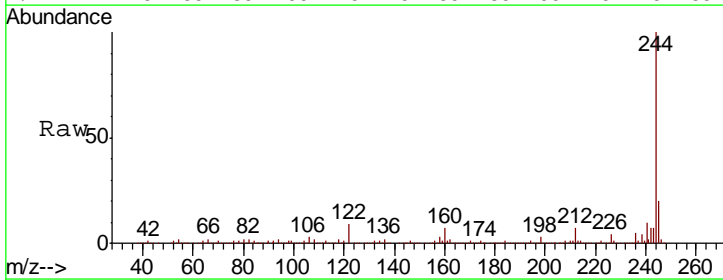
Instrument :
 BNA_F
 ClientSampled :
 SP-3

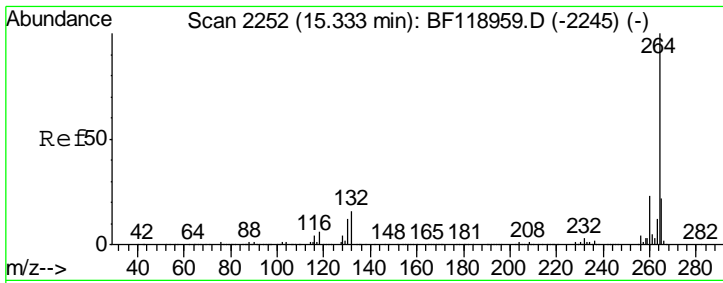
Tgt Ion	Resp	Lower	Upper
240	301818		
120	10.3	8.4	12.6
236	26.5	21.0	31.4



#79
 Terphenyl-d14
 Concen: 72.627 ng
 RT: 12.82 min Scan# 1825
 Delta R.T. -0.01 min
 Lab File: BF119351.D
 Acq: 11 Mar 2020 17:33

Tgt Ion	Resp	Lower	Upper
244	1273193		
212	7.4	6.6	10.0
122	9.2	8.2	12.2





#87
 Perylene-d12
 Concen: 20.000 ng
 RT: 15.31 min Scan# 2248
 Delta R.T. 0.00 min
 Lab File: BF119351.D
 Acq: 11 Mar 2020 17:33

Instrument :
 BNA_F
ClientSampled :
 SP-3

Tot Ion: 264 Resp: 303173

Ion	Ratio	Lower	Upper
264	100		
260	24.4	19.4	29.2
265	21.7	17.7	26.5

