

Data Path : Z:\HPCHEM1\BNA F\DATA\BF031218\
 Data File : BF103579.D
 Acq On : 12 Mar 2018 13:59
 Operator : SJ/JU
 Sample : J1876-02
 Misc :
 ALS Vial : 10 Sample Multiplier: 1

Instrument :
 BNA_F
 ClientSampleId :
 SB-07-08-10

Manual Integrations
 APPROVED

Sohil
 3/13/2018 4:12:57 PM

Quant Time: Mar 12 15:15:45 2018
 Quant Method : Z:\HPCHEM1\BNA F\METHODS\8270-BF022218.M
 Quant Title : ASP BNA STANDARDS FOR 5 POINT CALIBRATION
 QLast Update : Fri Mar 09 11:47:13 2018
 Response via : Initial Calibration

Internal Standards	R.T.	QIon	Response	Conc	Units	Dev(Min)
1) 1,4-Dichlorobenzene-d4	6.86	152	141804	20.00	ng	0.00
21) Naphthalene-d8	8.14	136	577727	20.00	ng	-0.01
38) Acenaphthene-d10	9.90	164	240044	20.00	ng	-0.01
63) Phenanthrene-d10	11.40	188	352701	20.00	ng	0.00
75) Chrysene-d12	14.06	240	216606	20.00	ng	0.00
86) Perylene-d12	15.57	264	203928	20.00	ng	0.00

System Monitoring Compounds

5) 2-Fluorophenol	5.51	112	200912m	21.43	ng	0.02
7) Phenol-d6	6.50	99	1116215	97.29	ng	0.00
23) Nitrobenzene-d5	7.43	82	767845	75.90	ng	-0.01
41) 2,4,6-Tribromophenol	10.70	330	13325	6.56	ng	0.00
44) 2-Fluorobiphenyl	9.22	172	1071453	74.68	ng	0.00
78) Terphenyl-d14	12.98	244	637570	70.76	ng	0.00

Target Compounds

	R.T.	QIon	Response	Conc	Units	Qvalue
9) Benzaldehyde	6.51	77	4431	Below Cal		# 42
10) Phenol	6.52	94	31127	2.337	ng	# 1
49) Dimethylphthalate	9.61	163	110472	5.737	ng	100
70) Phenanthrene	11.42	178	107896	5.559	ng	98
74) Fluoranthene	12.62	202	132733	6.805	ng	96
77) Pyrene	12.85	202	122699	7.265	ng	97
80) Benzo(a)anthracene	14.04	228	49795	3.543	ng	97
82) Chrysene	14.09	228	44447	3.257	ng	97
85) Indeno(1,2,3-cd)pyrene	17.13	276	23047	2.133	ng	93
87) Benzo(b)fluoranthene	15.13	252	57045m	4.255	ng	
89) Benzo(a)pyrene	15.51	252	41482	3.465	ng	# 86
91) Benzo(a,h,i)perylene	17.60	276	21062	2.329	ng	# 83

(#) = qualifier out of range (m) = manual integration (+) = signals summed

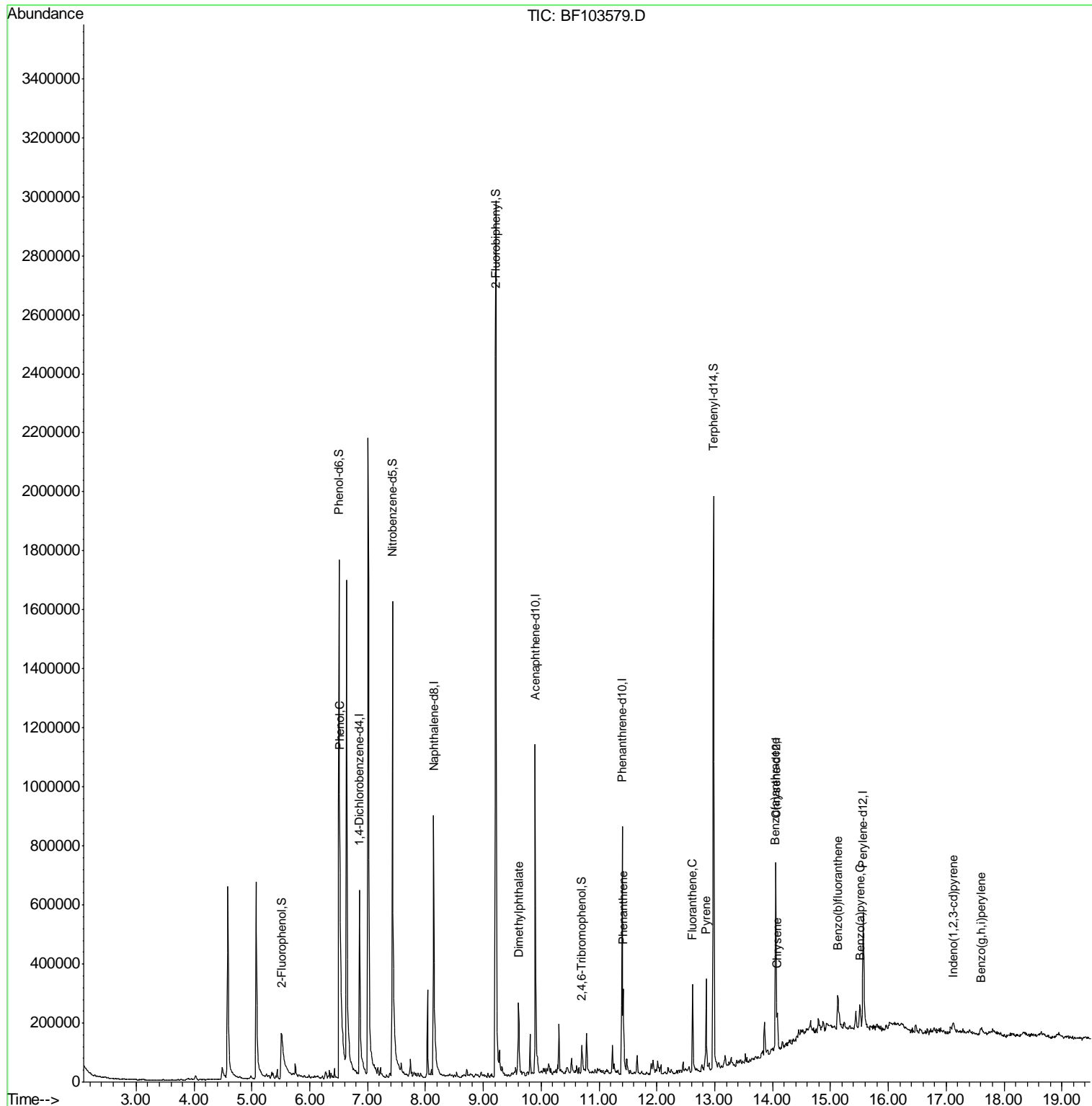
Data Path : Z:\HPCHEM1\BNA F\DATA\BF031218\
 Data File : BF103579.D
 Acq On : 12 Mar 2018 13:59
 Operator : SJ/JU
 Sample : J1876-02
 Misc :
 ALS Vial : 10 Sample Multiplier: 1

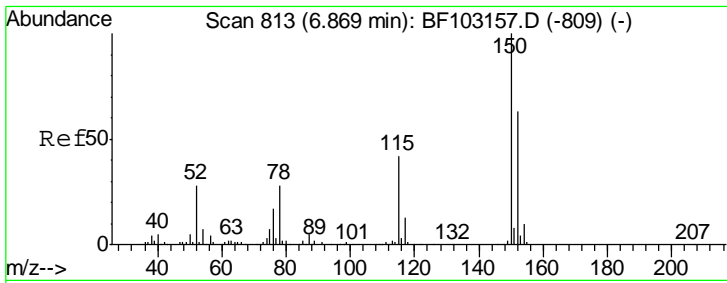
Instrument :
 BNA_F
 ClientSampled :
 SB-07-08-10

Manual Integrations
 APPROVED

Sohil
 3/13/2018 4:12:57 PM

Quant Time: Mar 12 15:15:45 2018
 Quant Method : Z:\HPCHEM1\BNA F\METHODS\8270-BF022218.M
 Quant Title : ASP BNA STANDARDS FOR 5 POINT CALIBRATION
 QLast Update : Fri Mar 09 11:47:13 2018
 Response via : Initial Calibration





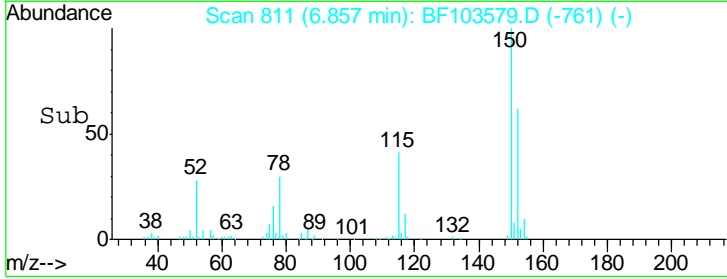
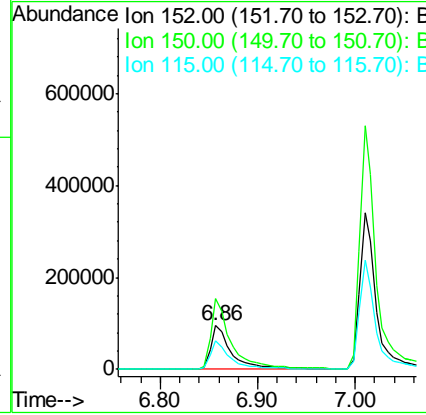
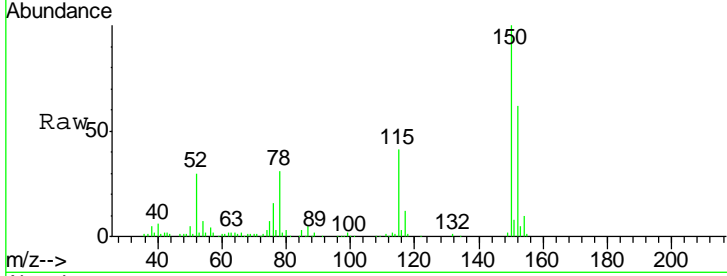
#1
 1,4-Dichlorobenzene-d4
 Concen: 20.000 ng
 RT: 6.86 min Scan# 811
 Delta R.T. -0.01 min
 Lab File: BF103579.D
 Acq: 12 Mar 2018 13:59

Instrument :
 BNA_F
 ClientSampled :
 SB-07-08-10

Tgt Ion	Resp	Lower	Upper
152	141804		
152	100		
150	161.3	124.6	186.8
115	66.6	50.1	75.1

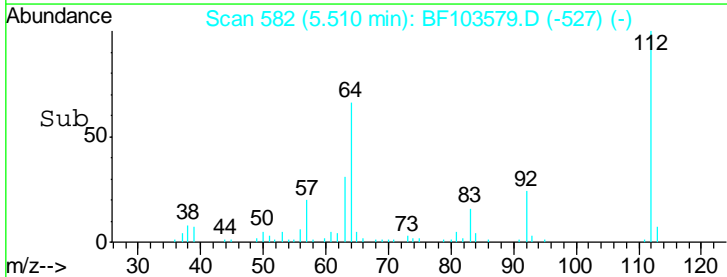
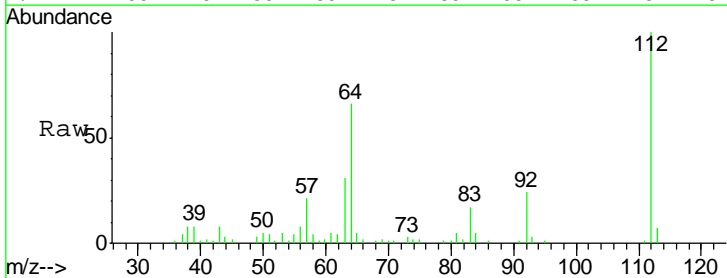
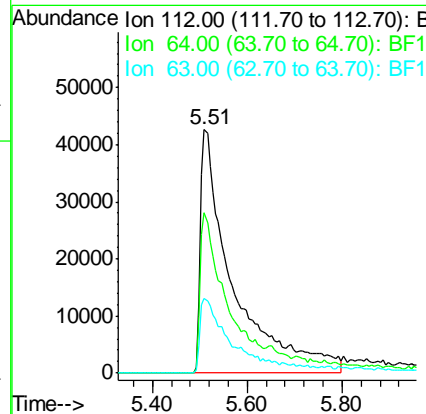
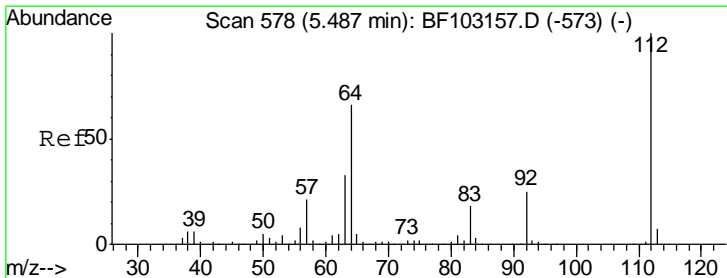
Manual Integrations
 APPROVED

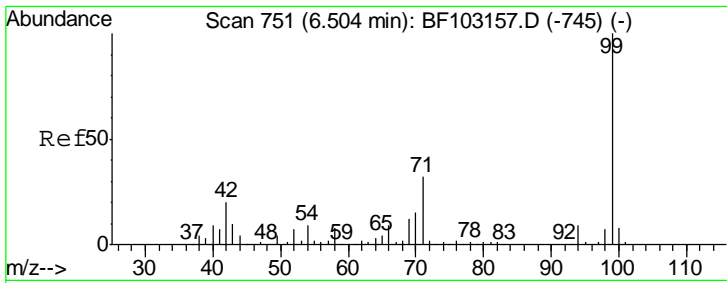
Sohil
 3/13/2018 4:12:57 PM



#5
 2-Fluorophenol
 Concen: 21.429 ng m
 RT: 5.51 min Scan# 582
 Delta R.T. 0.02 min
 Lab File: BF103579.D
 Acq: 12 Mar 2018 13:59

Tgt Ion	Resp	Lower	Upper
112	200912		
112	100		
64	66.0	47.9	71.9
63	30.7	23.7	35.5





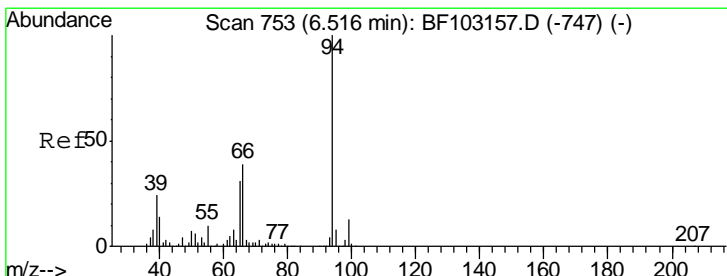
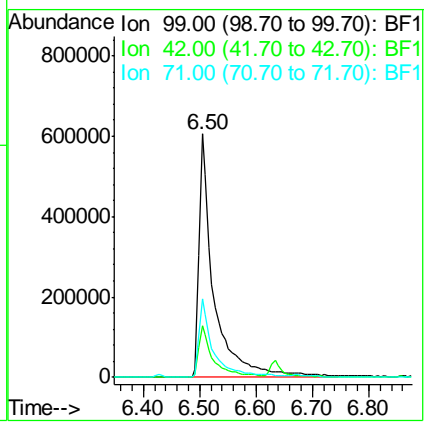
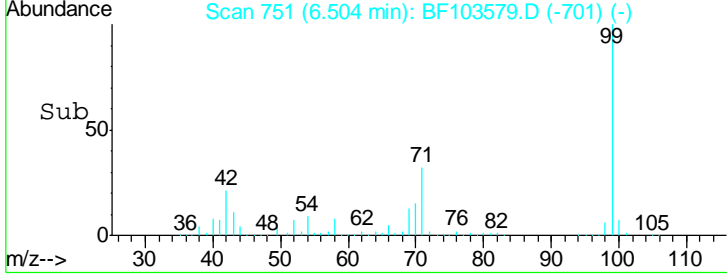
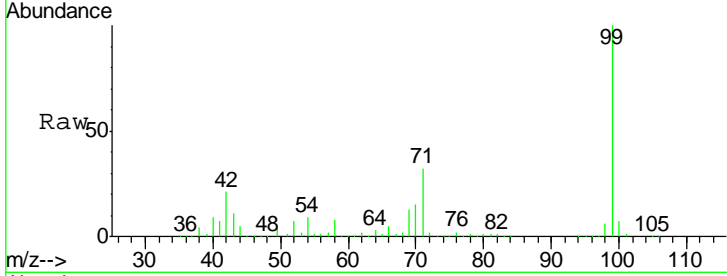
#7
 Phenol-d6
 Concen: 97.292 ng
 RT: 6.50 min Scan# 751
 Delta R.T. -0.01 min
 Lab File: BF103579.D
 Acq: 12 Mar 2018 13:59

Instrument :
 BNA_F
ClientSampled :
 SB-07-08-10

Tgt Ion: 99 Resp: 1116215

Ion	Ratio	Lower	Upper
99	100		
42	21.4	14.5	21.7
71	32.4	25.4	38.0

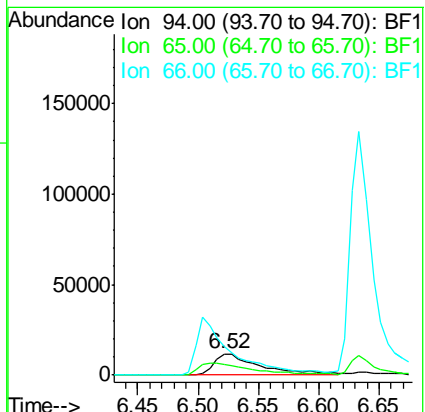
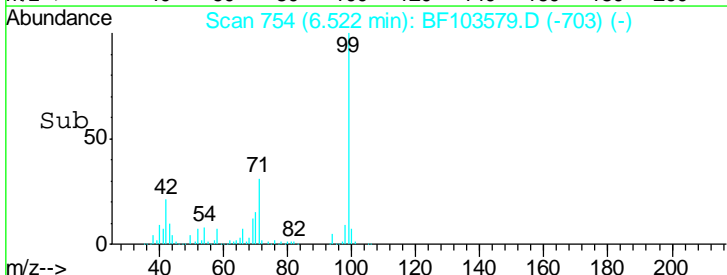
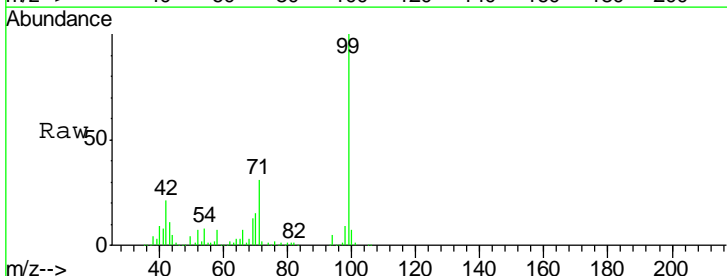
Manual Integrations
APPROVED
 Sohil
 3/13/2018 4:12:57 PM

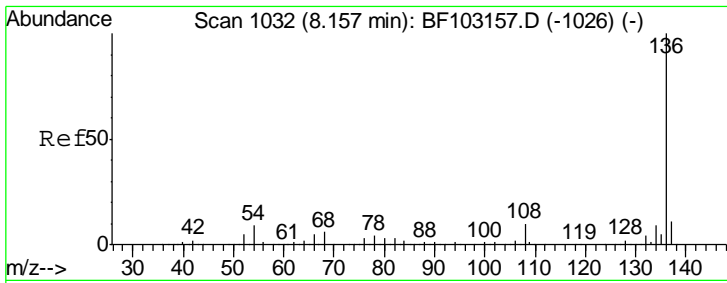


#10
 Phenol
 Concen: 2.337 ng
 RT: 6.52 min Scan# 754
 Delta R.T. -0.00 min
 Lab File: BF103579.D
 Acq: 12 Mar 2018 13:59

Tgt Ion: 94 Resp: 31127

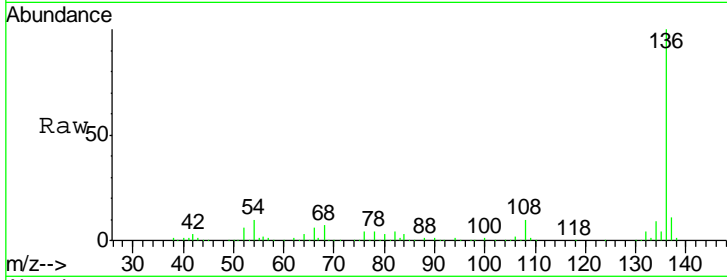
Ion	Ratio	Lower	Upper
94	100		
65	51.3	7.9	47.9#
66	133.4	16.2	56.2#





#21
 Naphthalene-d8
 Concen: 20.000 ng
 RT: 8.14 min Scan# 1029
 Delta R.T. -0.01 min
 Lab File: BF103579.D
 Acq: 12 Mar 2018 13:59

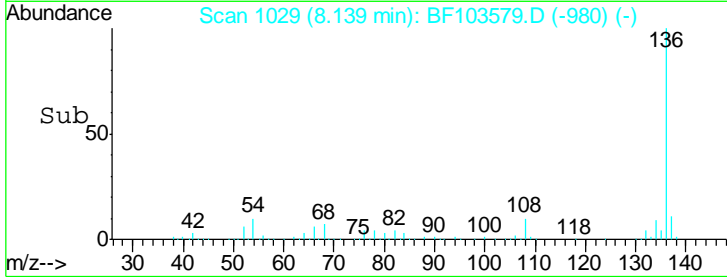
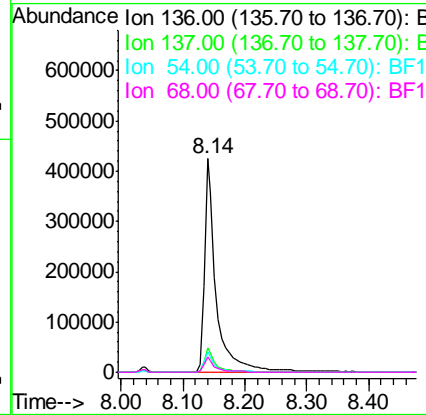
Instrument :
 BNA_F
ClientSampled :
 SB-07-08-10



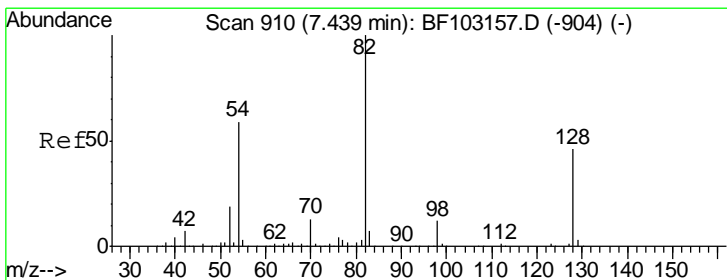
Tgt Ion: 136 Resp: 577727

Ion	Ratio	Lower	Upper
136	100		
137	11.4	8.9	13.3
54	9.7	6.6	9.8
68	7.1	5.0	7.4

Manual Integrations
APPROVED
 Sohil
 3/13/2018 4:12:57 PM

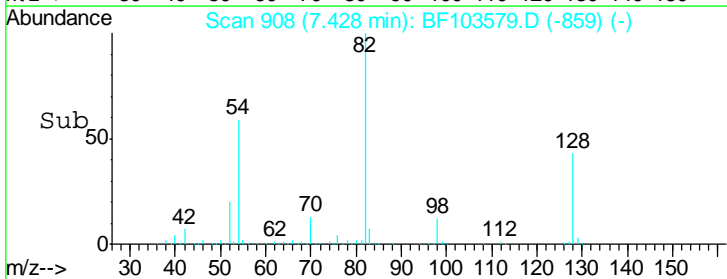
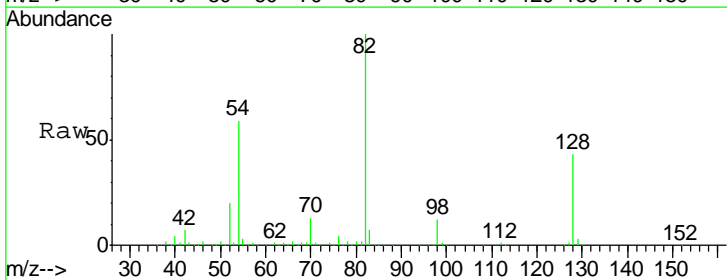
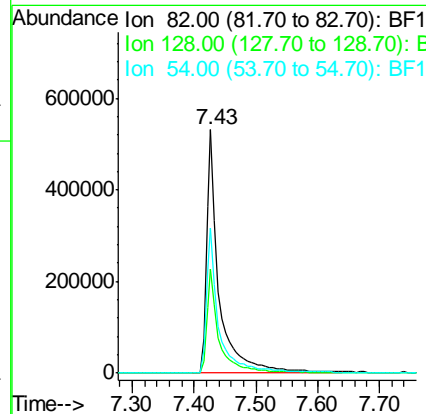


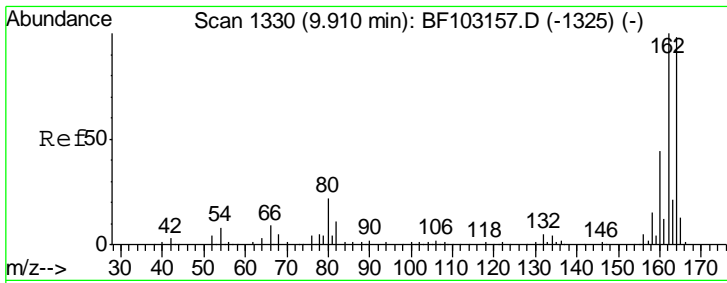
#23
 Nitrobenzene-d5
 Concen: 75.902 ng
 RT: 7.43 min Scan# 908
 Delta R.T. -0.01 min
 Lab File: BF103579.D
 Acq: 12 Mar 2018 13:59



Tgt Ion: 82 Resp: 767845

Ion	Ratio	Lower	Upper
82	100		
128	42.8	36.1	54.1
54	59.5	41.4	62.2





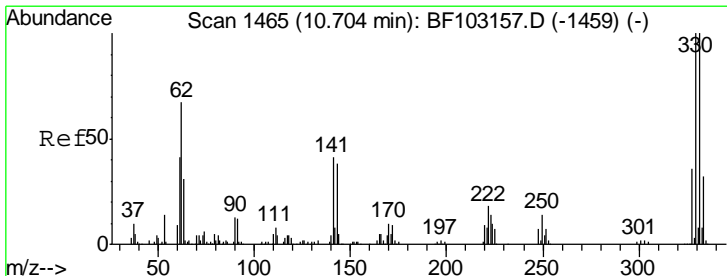
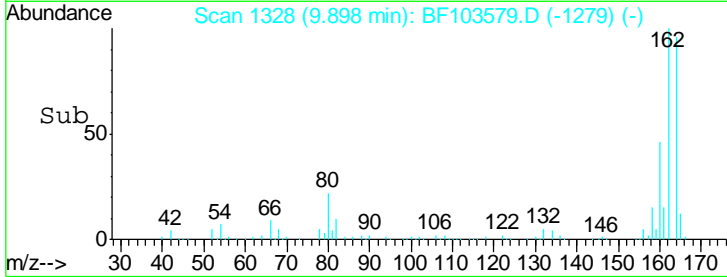
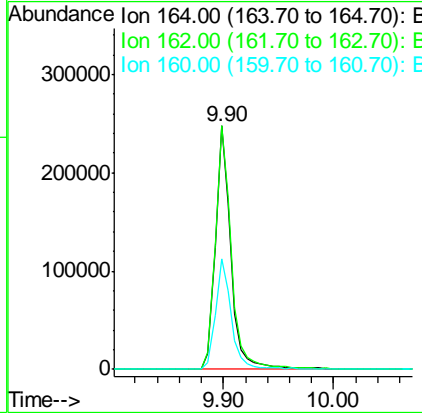
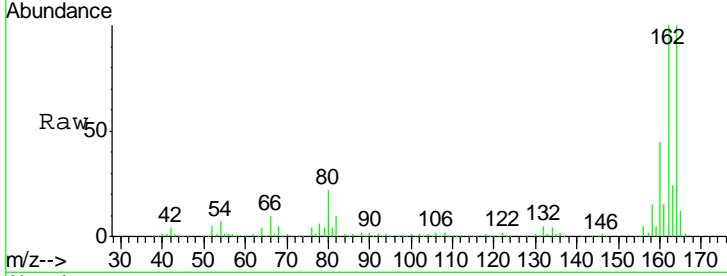
#38
 Acenaphthene-d10
 Concen: 20.000 ng
 RT: 9.90 min Scan# 1328
 Delta R.T. -0.01 min
 Lab File: BF103579.D
 Acq: 12 Mar 2018 13:59

Instrument :
 BNA_F
ClientSampled :
 SB-07-08-10

Tgt Ion	Resp	Lower	Upper
164	100		
162	100.1	86.1	129.1
160	45.5	38.3	57.5

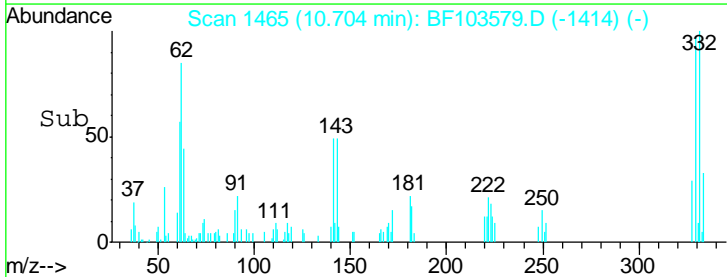
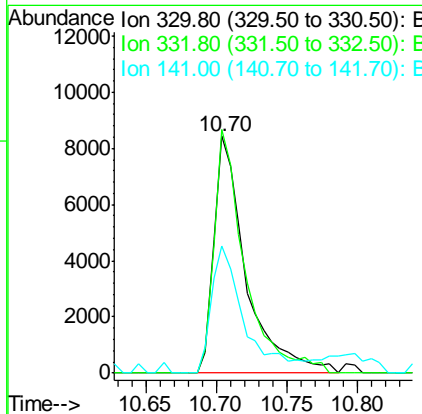
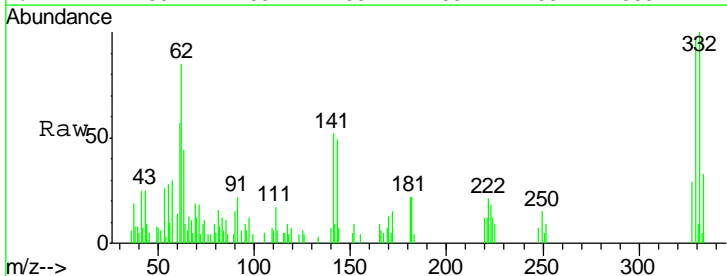
Manual Integrations
APPROVED

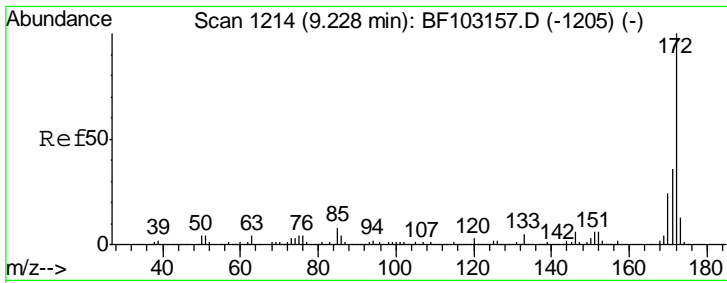
Sohil
 3/13/2018 4:12:57 PM



#41
 2,4,6-Tribromophenol
 Concen: 6.558 ng
 RT: 10.70 min Scan# 1465
 Delta R.T. -0.00 min
 Lab File: BF103579.D
 Acq: 12 Mar 2018 13:59

Tgt Ion	Resp	Lower	Upper
330	100		
332	98.8	77.0	115.6
141	55.4	29.9	44.9#





#44
 2-Fluorobiphenyl
 Concen: 74.684 ng
 RT: 9.22 min Scan# 1212
 Delta R.T. -0.01 min
 Lab File: BF103579.D
 Acq: 12 Mar 2018 13:59

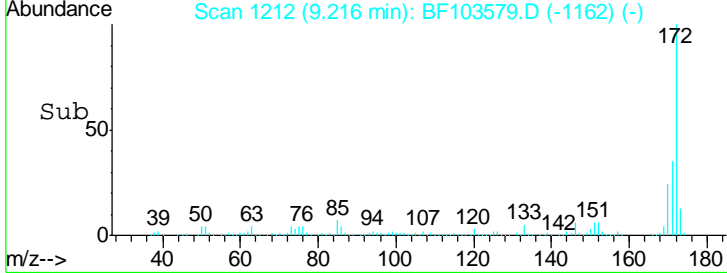
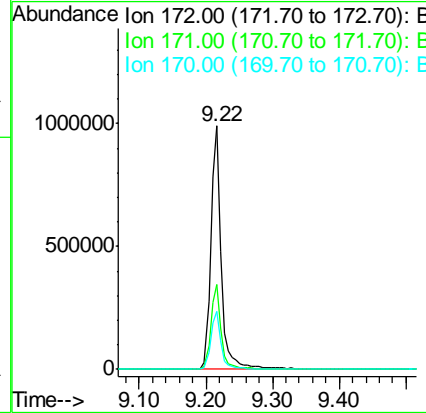
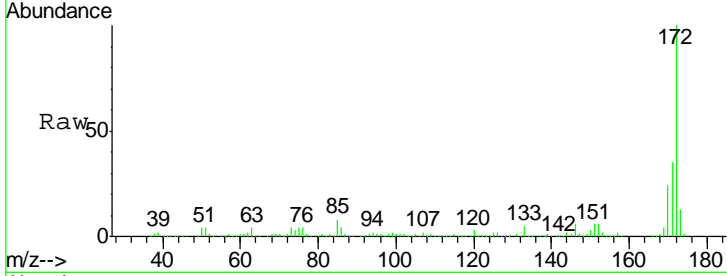
Instrument :
 BNA_F
Client Sampled :
 SB-07-08-10

Tgt Ion: 172 Resp: 1071453

Ion	Ratio	Lower	Upper
172	100		
171	35.1	29.7	44.5
170	23.9	19.6	29.4

Manual Integrations
APPROVED

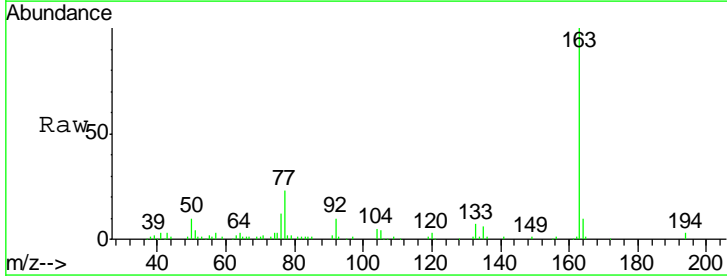
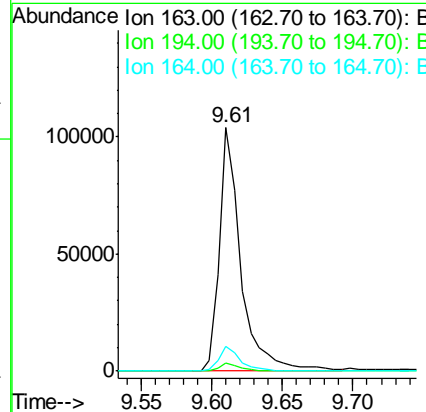
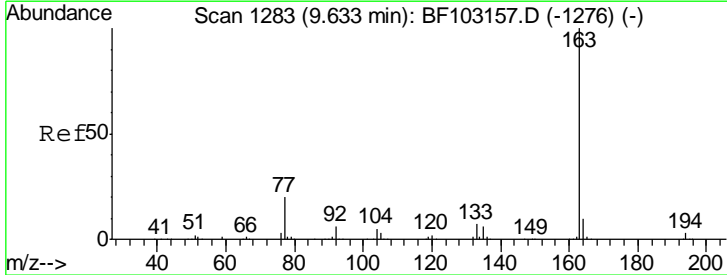
Sohil
 3/13/2018 4:12:57 PM

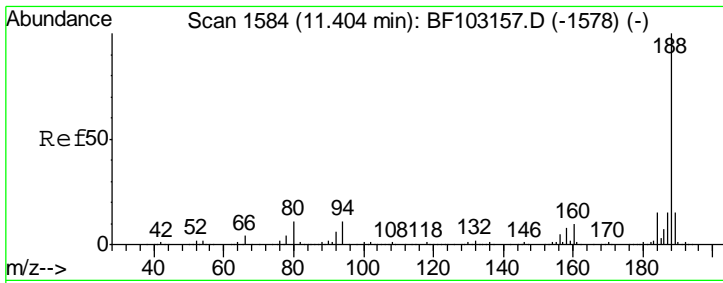


#49
 Dimethylphthalate
 Concen: 5.737 ng
 RT: 9.61 min Scan# 1279
 Delta R.T. -0.02 min
 Lab File: BF103579.D
 Acq: 12 Mar 2018 13:59

Tgt Ion: 163 Resp: 110472

Ion	Ratio	Lower	Upper
163	100		
194	3.2	2.7	4.1
164	10.2	8.2	12.2



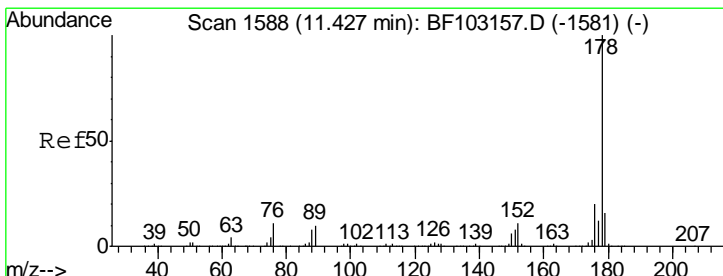
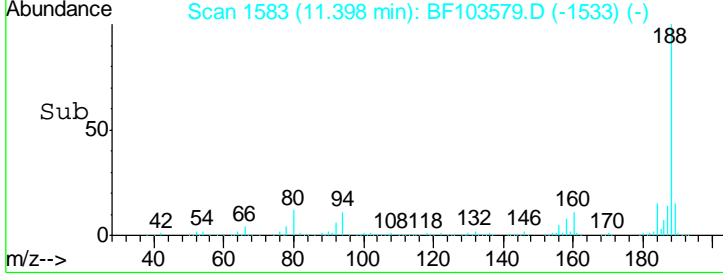
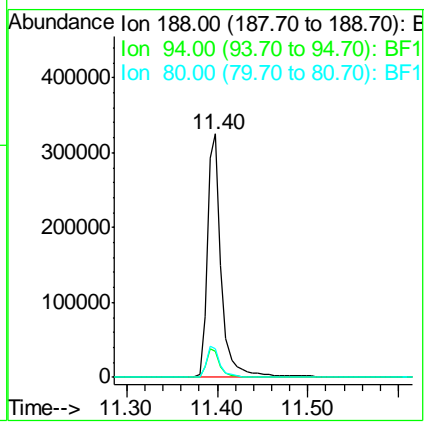
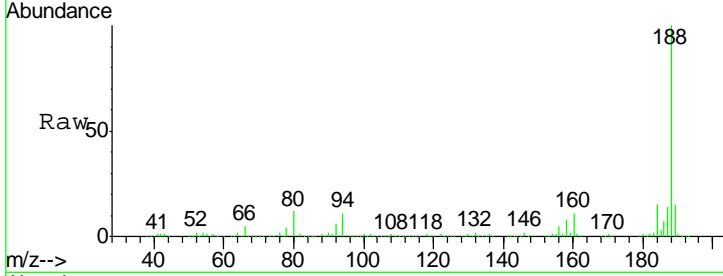


#63
 Phenanthrene-d10
 Concen: 20.000 ng
 RT: 11.40 min Scan# 1583
 Delta R.T. -0.01 min
 Lab File: BF103579.D
 Acq: 12 Mar 2018 13:59

Instrument :
 BNA_F
ClientSampled :
 SB-07-08-10

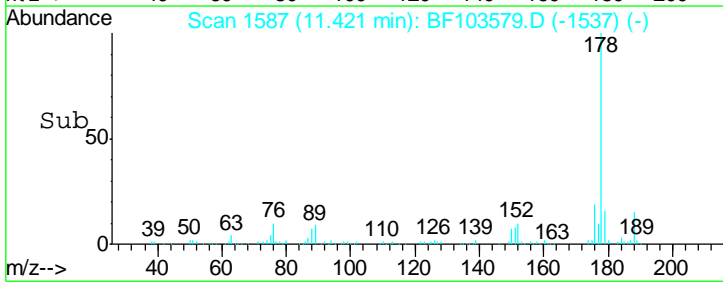
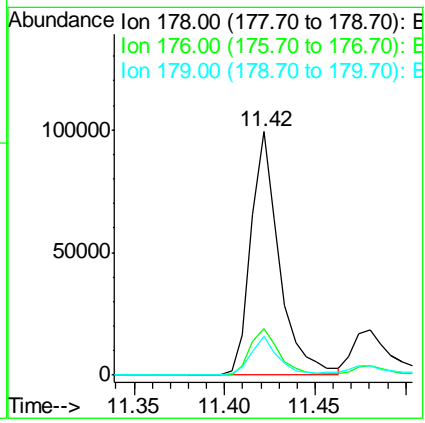
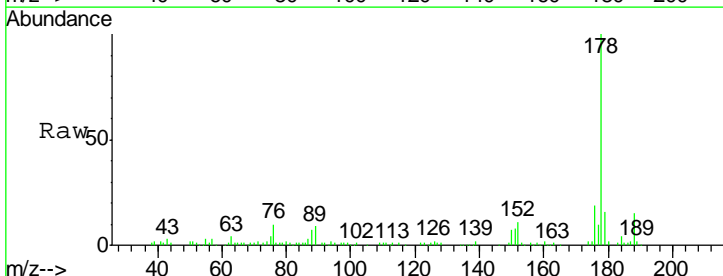
Tgt Ion	Resp	Lower	Upper
188	352701		
188	100		
94	10.7	8.5	12.7
80	11.7	9.2	13.8

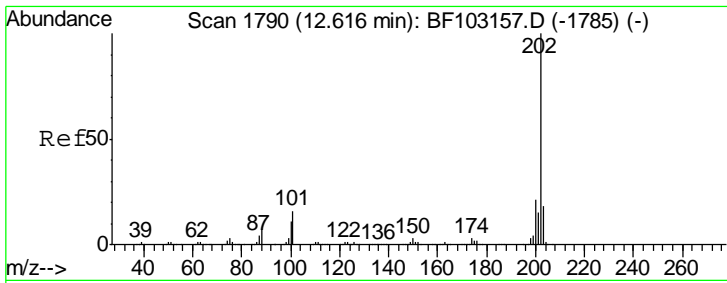
Manual Integrations
APPROVED
 Sohil
 3/13/2018 4:12:57 PM



#70
 Phenanthrene
 Concen: 5.559 ng
 RT: 11.42 min Scan# 1587
 Delta R.T. -0.01 min
 Lab File: BF103579.D
 Acq: 12 Mar 2018 13:59

Tgt Ion	Resp	Lower	Upper
178	107896		
178	100		
176	18.9	15.8	23.8
179	15.8	13.0	19.6





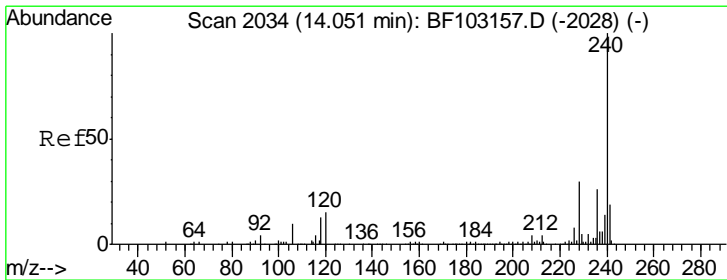
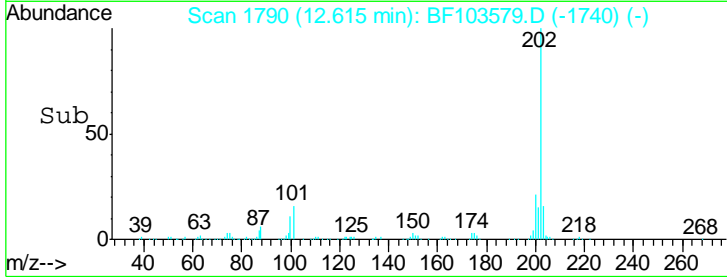
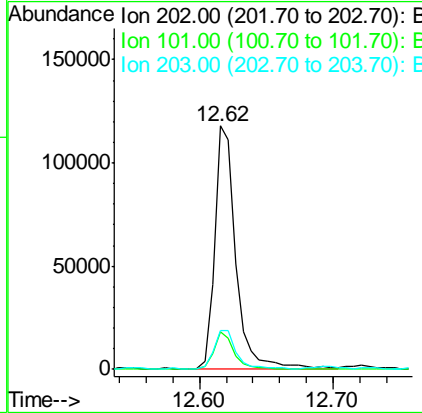
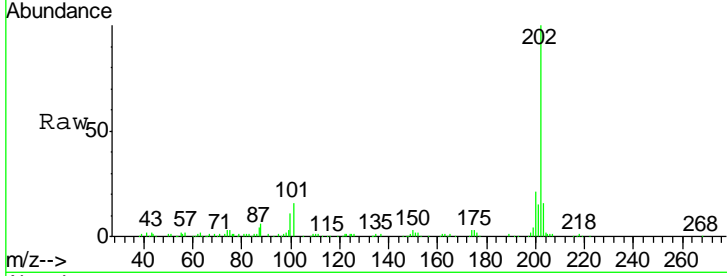
#74
 Fluoranthene
 Concen: 6.805 ng
 RT: 12.62 min Scan# 1790
 Delta R.T. -0.01 min
 Lab File: BF103579.D
 Acq: 12 Mar 2018 13:59

Instrument :
 BNA_F
 ClientSampled :
 SB-07-08-10

Tgt Ion	Ratio	Lower	Upper
202	100		
101	15.6	0.0	34.1
203	16.1	0.0	38.1

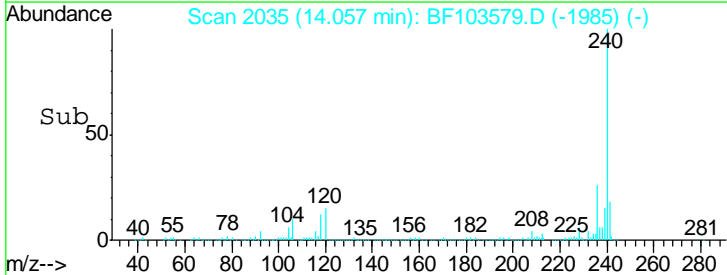
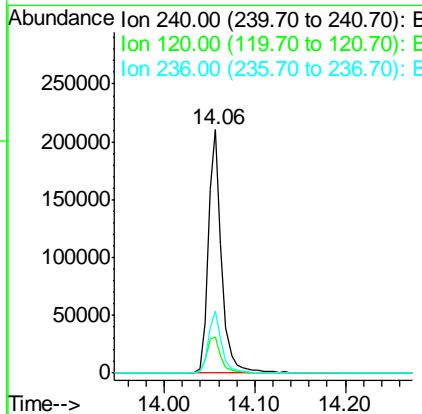
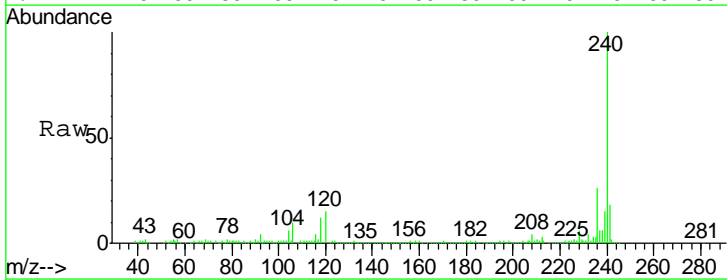
Manual Integrations
 APPROVED

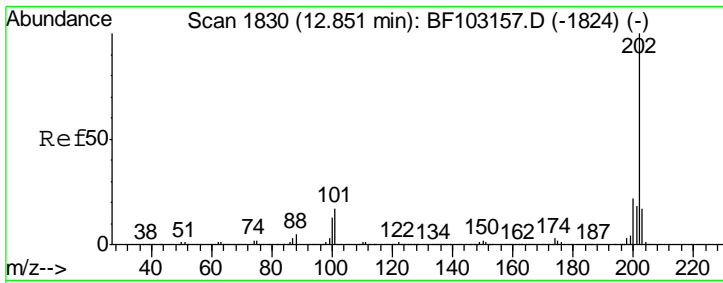
Sohil
 3/13/2018 4:12:57 PM



#75
 Chrysene-d12
 Concen: 20.000 ng
 RT: 14.06 min Scan# 2035
 Delta R.T. -0.01 min
 Lab File: BF103579.D
 Acq: 12 Mar 2018 13:59

Tgt Ion	Ratio	Lower	Upper
240	100		
120	14.8	9.5	14.3#
236	25.5	20.7	31.1



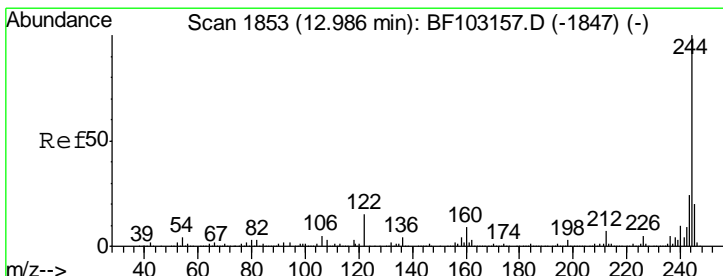
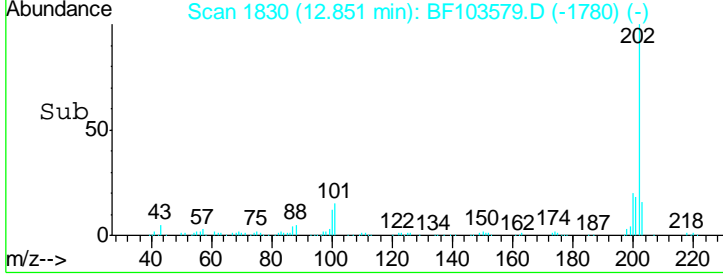
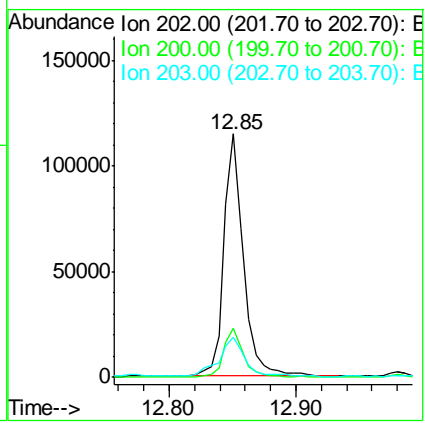
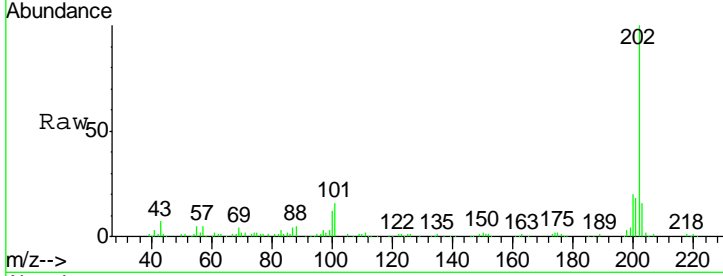


#77
 Pyrene
 Concen: 7.265 ng
 RT: 12.85 min Scan# 1830
 Delta R.T. -0.01 min
 Lab File: BF103579.D
 Acq: 12 Mar 2018 13:59

Instrument :
 BNA_F
Client Sampled :
 SB-07-08-10

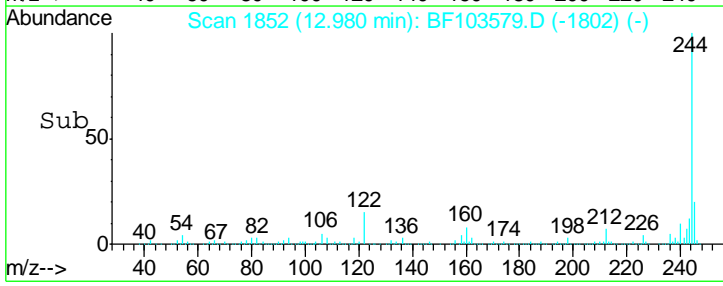
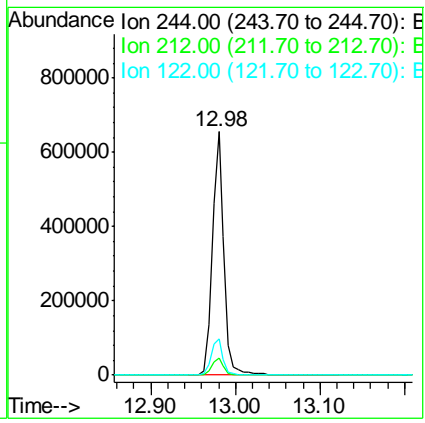
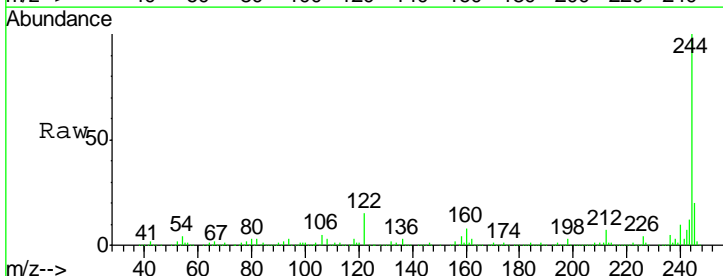
Tgt Ion	Ratio	Lower	Upper
202	100		
200	20.4	17.4	26.2
203	16.5	14.3	21.5

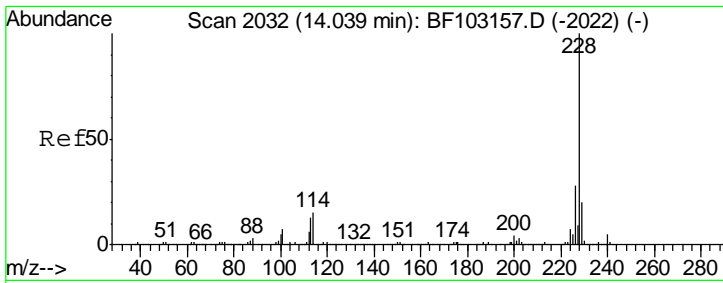
Manual Integrations
APPROVED
 Sohil
 3/13/2018 4:12:57 PM



#78
 Terphenyl-d14
 Concen: 70.757 ng
 RT: 12.98 min Scan# 1852
 Delta R.T. -0.01 min
 Lab File: BF103579.D
 Acq: 12 Mar 2018 13:59

Tgt Ion	Ratio	Lower	Upper
244	100		
212	7.1	5.4	8.0
122	14.8	11.0	16.4





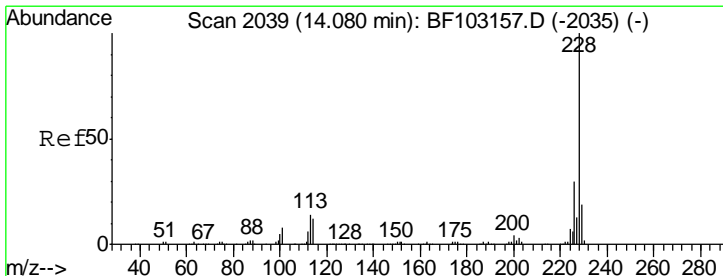
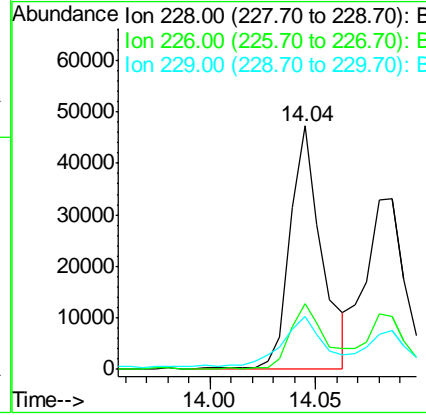
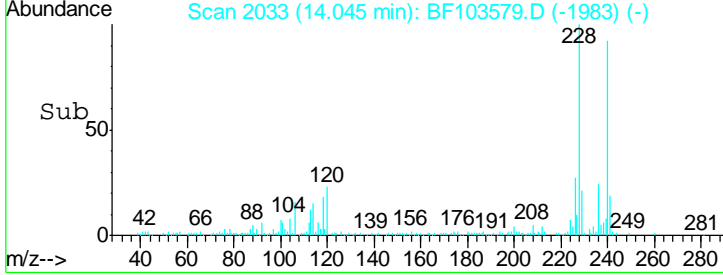
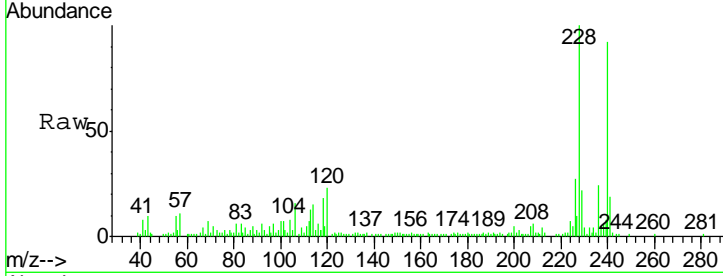
#80
 Benzo(a)anthracene
 Concen: 3.543 ng
 RT: 14.04 min Scan# 2033
 Delta R.T. -0.01 min
 Lab File: BF103579.D
 Acq: 12 Mar 2018 13:59

Instrument :
 BNA_F
 ClientSampled :
 SB-07-08-10

Tgt Ion	Resp	Lower	Upper
228	100		
226	27.0	22.6	33.8
229	21.7	15.8	23.6

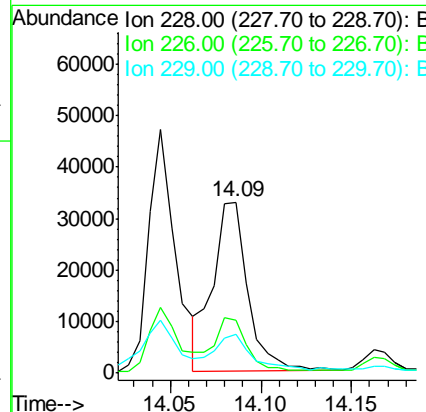
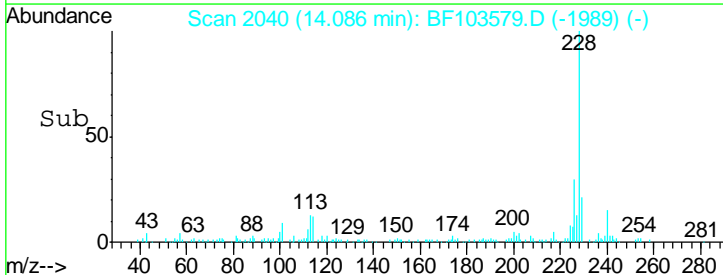
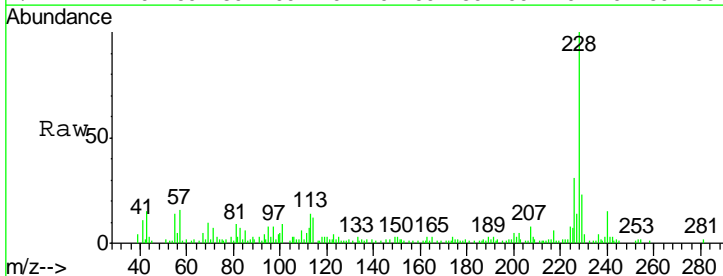
Manual Integrations
 APPROVED

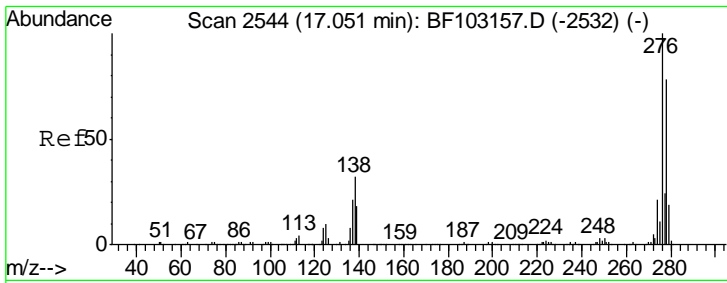
Sohil
 3/13/2018 4:12:57 PM



#82
 Chrysene
 Concen: 3.257 ng
 RT: 14.09 min Scan# 2040
 Delta R.T. -0.00 min
 Lab File: BF103579.D
 Acq: 12 Mar 2018 13:59

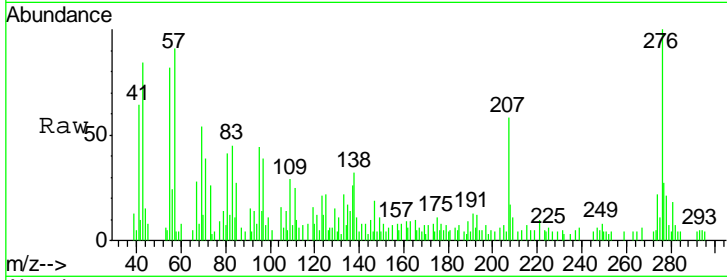
Tgt Ion	Resp	Lower	Upper
228	100		
226	30.9	25.0	37.6
229	23.0	16.2	24.4





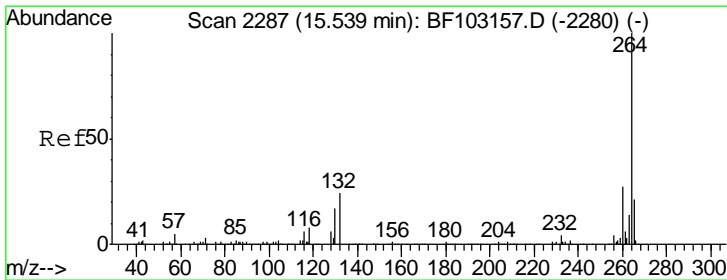
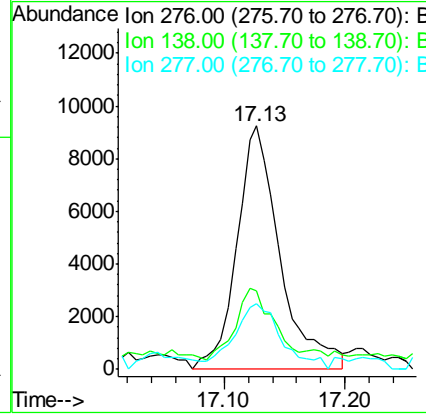
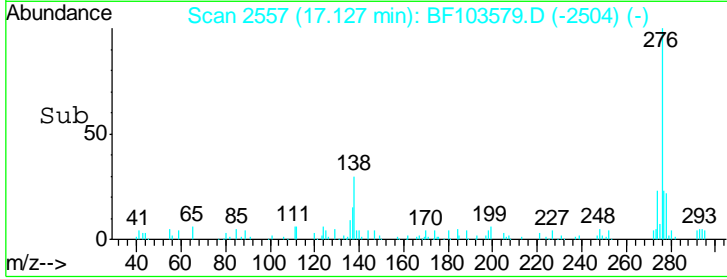
#85
 Indeno(1,2,3-cd)pyrene
 Concen: 2.133 ng
 RT: 17.13 min Scan# 2557
 Delta R.T. 0.01 min
 Lab File: BF103579.D
 Acq: 12 Mar 2018 13:59

Instrument :
 BNA_F
Client Sampled :
 SB-07-08-10

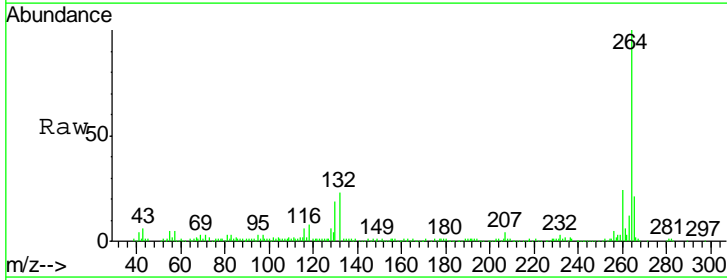


Tgt Ion	Resp	Lower	Upper
276	23047		
276	100		
138	28.5	25.0	37.6
277	29.9	20.1	30.1

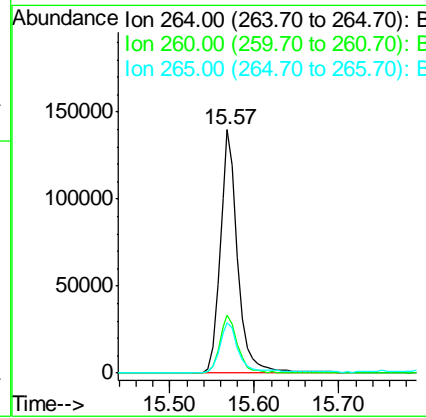
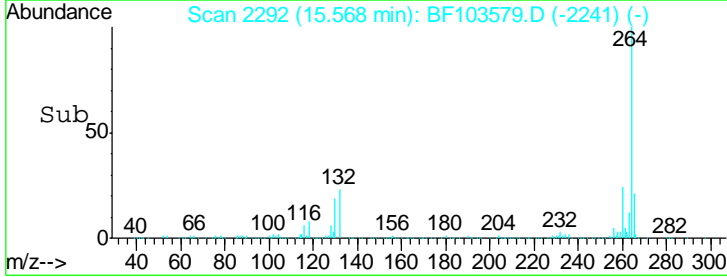
Manual Integrations
APPROVED
 Sohil
 3/13/2018 4:12:57 PM

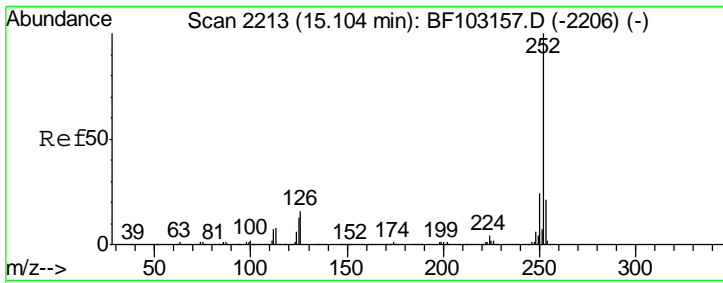


#86
 Perylene-d12
 Concen: 20.000 ng
 RT: 15.57 min Scan# 2292
 Delta R.T. -0.00 min
 Lab File: BF103579.D
 Acq: 12 Mar 2018 13:59



Tgt Ion	Resp	Lower	Upper
264	203928		
264	100		
260	23.6	19.2	28.8
265	20.8	17.5	26.3





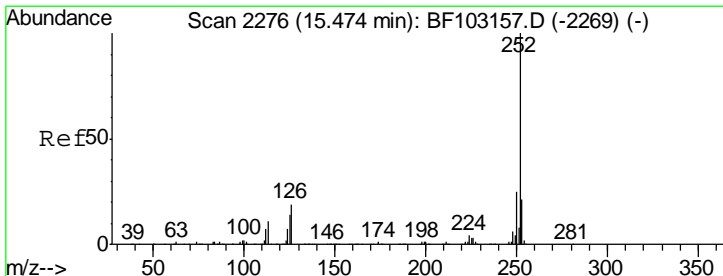
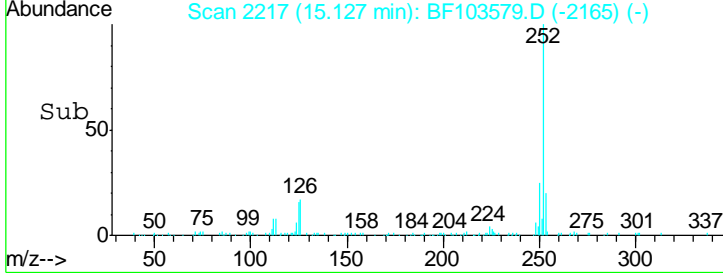
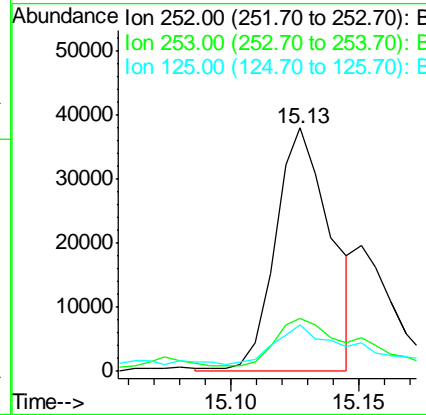
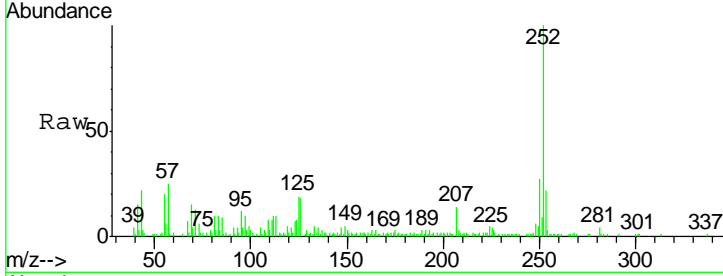
#87
 Benzo(b)fluoranthene
 Concen: 4.255 ng m
 RT: 15.13 min Scan# 2217
 Delta R.T. 0.01 min
 Lab File: BF103579.D
 Acq: 12 Mar 2018 13:59

Instrument :
 BNA_F
 ClientSampled :
 SB-07-08-10

Tgt Ion	Resp	Lower	Upper
252	100		
253	21.6	17.0	25.6
125	19.3	9.0	13.6#

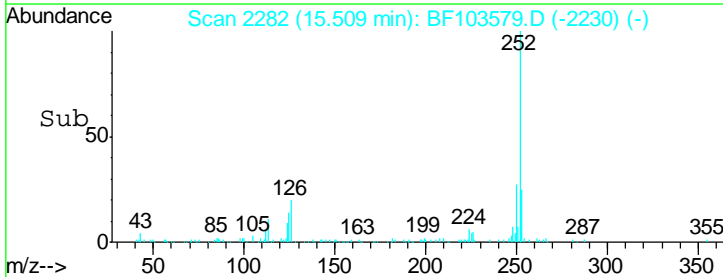
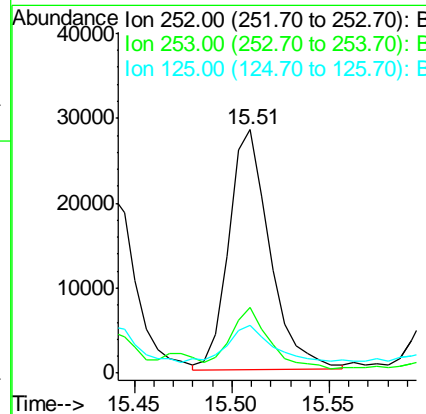
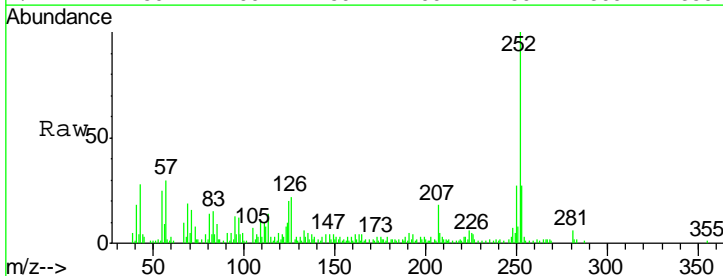
Manual Integrations
 APPROVED

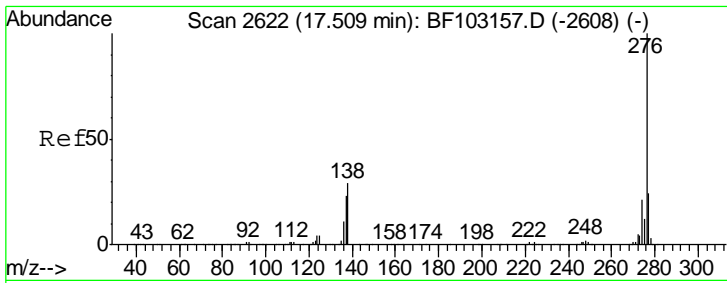
Sohil
 3/13/2018 4:12:57 PM



#89
 Benzo(a)pyrene
 Concen: 3.465 ng
 RT: 15.51 min Scan# 2282
 Delta R.T. 0.01 min
 Lab File: BF103579.D
 Acq: 12 Mar 2018 13:59

Tgt Ion	Resp	Lower	Upper
252	100		
253	26.9	17.1	25.7#
125	19.6	9.8	14.6#





#91
 Benzo(a,h,i)perylene
 Concen: 2.329 ng
 RT: 17.60 min Scan# 2638
 Delta R.T. 0.02 min
 Lab File: BF103579.D
 Acq: 12 Mar 2018 13:59

Instrument :
 BNA_F
ClientSampled :
 SB-07-08-10

Tot Ion	Ion	Ratio	Lower	Upper
21062	276	100		
26.9#	277	29.5	17.9	26.9#
32.8#	138	37.5	21.8	32.8#

Manual Integrations
APPROVED
 Sohil
 3/13/2018 4:12:57 PM

