

Data Path : Z:\SVOASRV\HPCHEM1\BNA F\DATA\BF031220\
 Data File : BF119393.D
 Acq On : 12 Mar 2020 21:29
 Operator : CG/JU
 Sample : L1887-03
 Misc :
 ALS Vial : 12 Sample Multiplier: 1

Instrument :
 BNA_F
 ClientSampleId :

Quant Time: Mar 13 01:48:15 2020
 Quant Method : Z:\SVOASRV\HPCHEM1\BNA F\METHODS\8270-BF022020.M
 Quant Title : ASP BNA STANDARDS FOR 5 POINT CALIBRATION
 QLast Update : Fri Mar 06 23:38:46 2020
 Response via : Initial Calibration

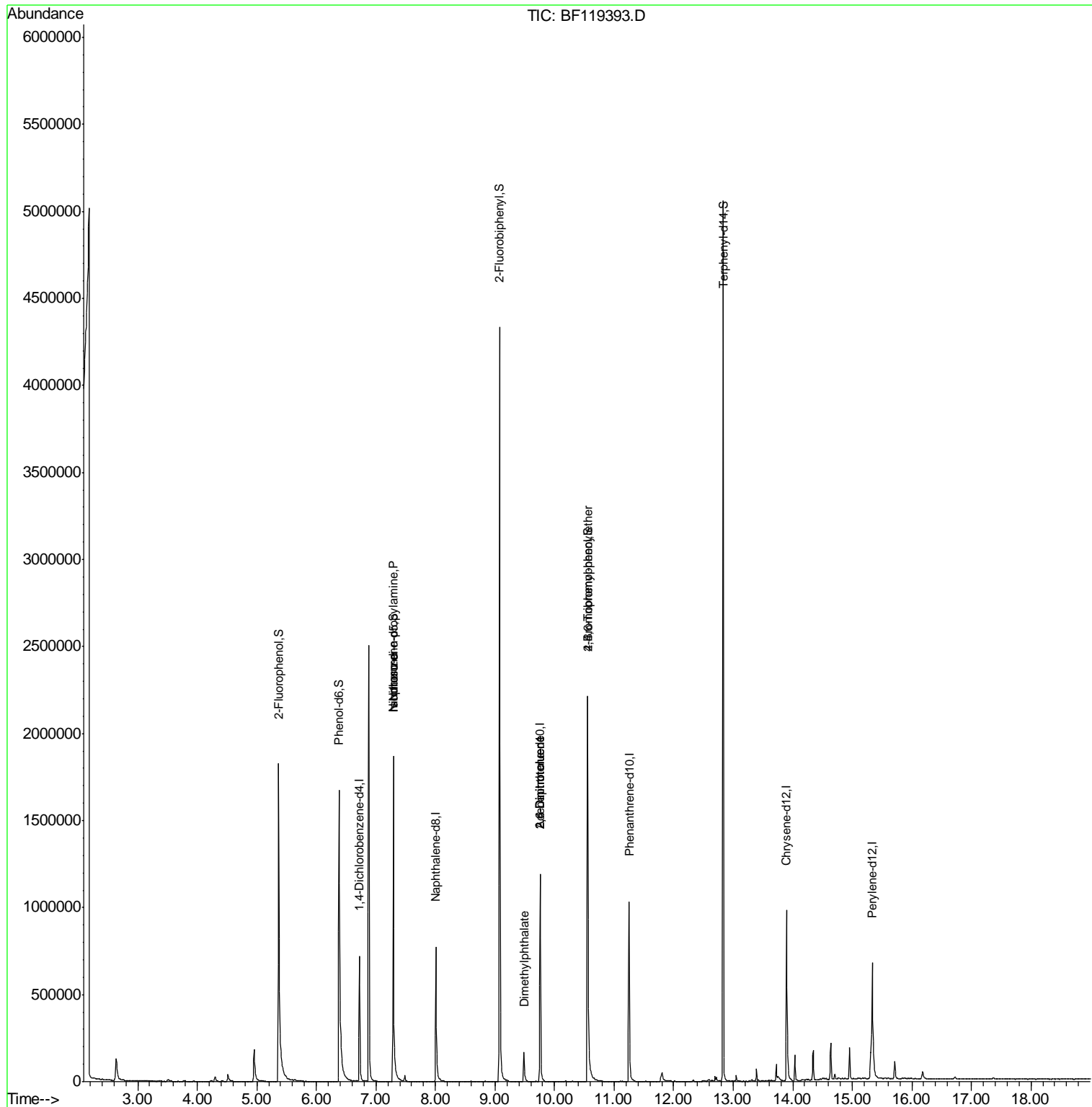
Internal Standards	R.T.	QIon	Response	Conc	Units	Dev(Min)
1) 1,4-Dichlorobenzene-d4	6.72	152	122998	20.00	ng	0.00
21) Naphthalene-d8	8.00	136	467066	20.00	ng	0.00
39) Acenaphthene-d10	9.76	164	261857	20.00	ng	0.00
64) Phenanthrene-d10	11.25	188	505828	20.00	ng	0.00
76) Chrysene-d12	13.90	240	408314	20.00	ng	0.01
87) Perylene-d12	15.33	264	419703	20.00	ng	0.02
System Monitoring Compounds						
5) 2-Fluorophenol	5.36	112	811102	110.20	ng	0.01
7) Phenol-d6	6.38	99	891912	99.64	ng	0.00
23) Nitrobenzene-d5	7.29	82	726951	82.18	ng	0.00
42) 2,4,6-Tribromophenol	10.56	330	388026	113.27	ng	0.00
45) 2-Fluorobiphenyl	9.08	172	1420922	79.94	ng	0.00
79) Terphenyl-d14	12.83	244	1849572	77.99	ng	0.00
Target Compounds						
19) n-Nitroso-di-n-propylamine	7.29	70	100863	19.338	ng	# 73
25) Isophorone	7.29	82	726951	47.319	ng	# 63
50) Dimethylphthalate	9.49	163	108348	5.411	ng	99
51) 2,6-Dinitrotoluene	9.76	165	34072	7.659	ng	# 33
57) 2,4-Dinitrotoluene	9.76	165	34072	5.909	ng	# 20
67) 4-Bromophenyl-phenylether	10.56	248	25925	3.921	ng	# 1

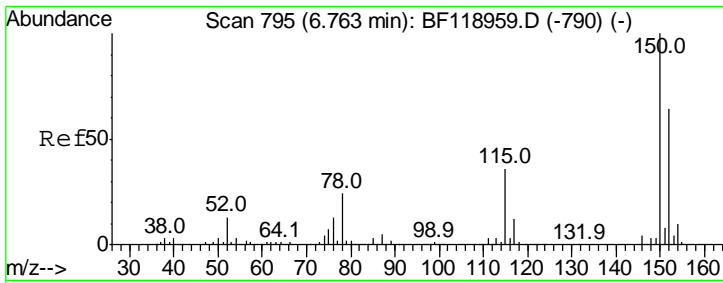
(#) = qualifier out of range (m) = manual integration (+) = signals summed

Data Path : Z:\SVOASRV\HPCHEM1\BNA F\DATA\BF031220\
 Data File : BF119393.D
 Acq On : 12 Mar 2020 21:29
 Operator : CG/JU
 Sample : L1887-03
 Misc :
 ALS Vial : 12 Sample Multiplier: 1

Instrument :
 BNA_F
 ClientSampleId :

Quant Time: Mar 13 01:48:15 2020
 Quant Method : Z:\SVOASRV\HPCHEM1\BNA F\METHODS\8270-BF022020.M
 Quant Title : ASP BNA STANDARDS FOR 5 POINT CALIBRATION
 QLast Update : Fri Mar 06 23:38:46 2020
 Response via : Initial Calibration



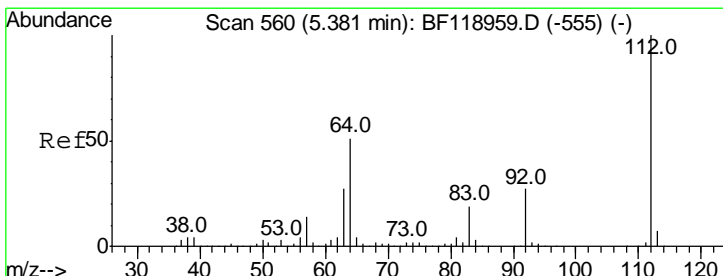
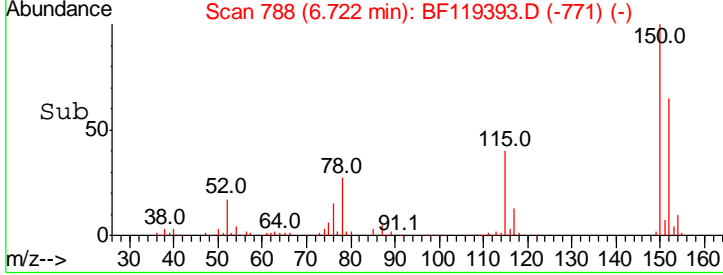
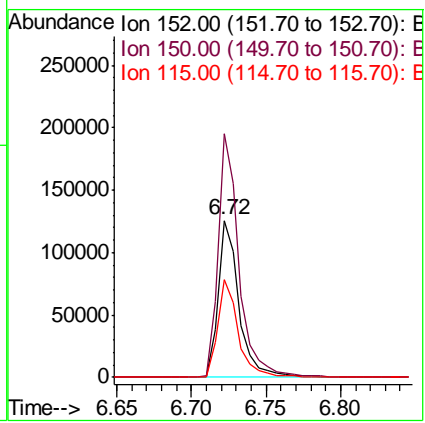
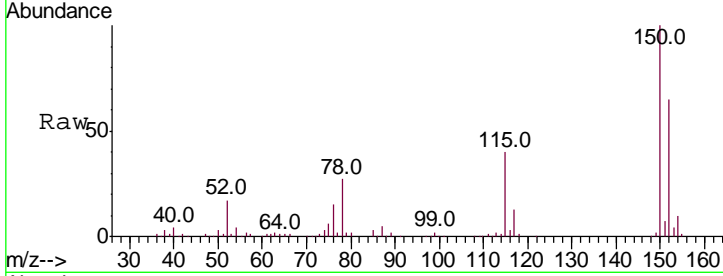


#1
 1,4-Dichlorobenzene-d4
 Concen: 20.000 ng
 RT: 6.72 min Scan# 788
 Delta R.T. 0.00 min
 Lab File: BF119393.D
 Acq: 12 Mar 2020 21:29

Instrument :
 BNA_F
 ClientSampled :

Tgt Ion:152 Resp: 122998

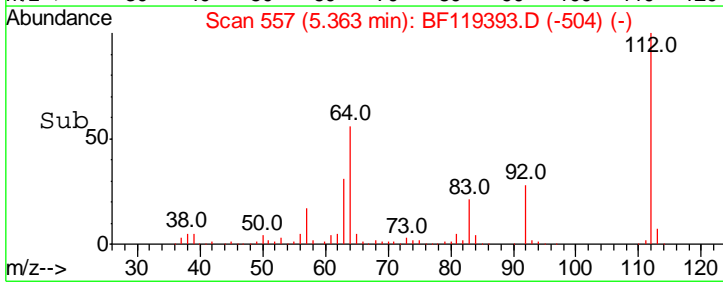
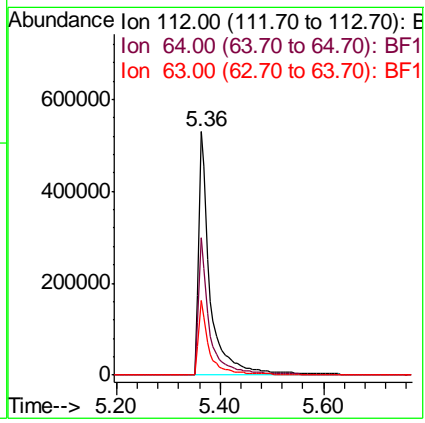
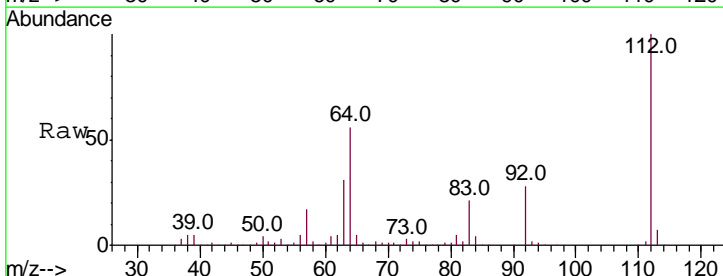
Ion	Ratio	Lower	Upper
152	100		
150	155.0	123.0	184.6
115	61.9	49.5	74.3

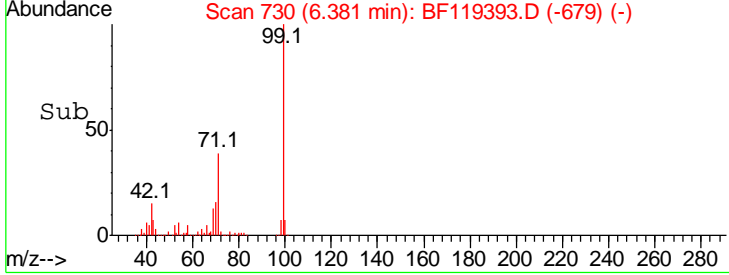
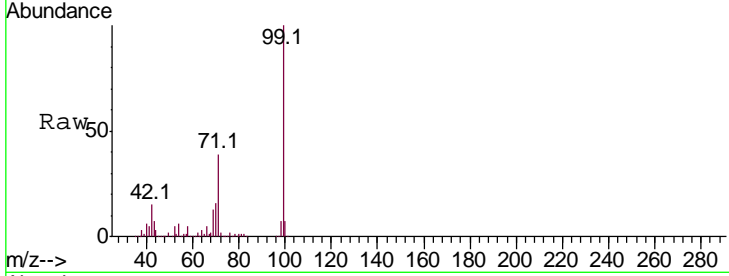
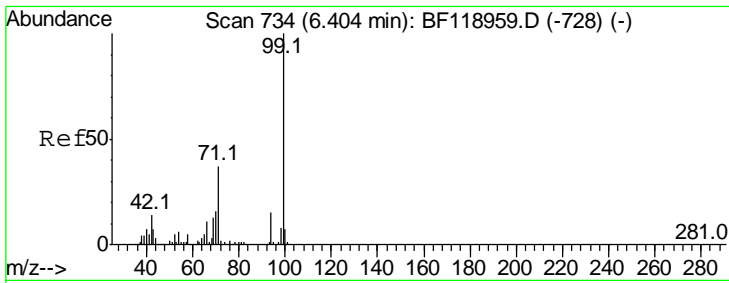


#5
 2-Fluorophenol
 Concen: 110.205 ng
 RT: 5.36 min Scan# 557
 Delta R.T. 0.01 min
 Lab File: BF119393.D
 Acq: 12 Mar 2020 21:29

Tgt Ion:112 Resp: 811102

Ion	Ratio	Lower	Upper
112	100		
64	56.4	45.0	67.4
63	30.9	24.2	36.4

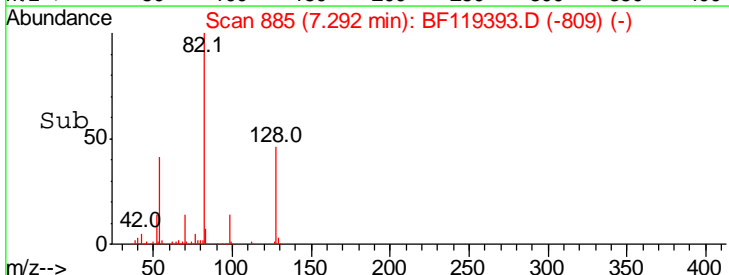
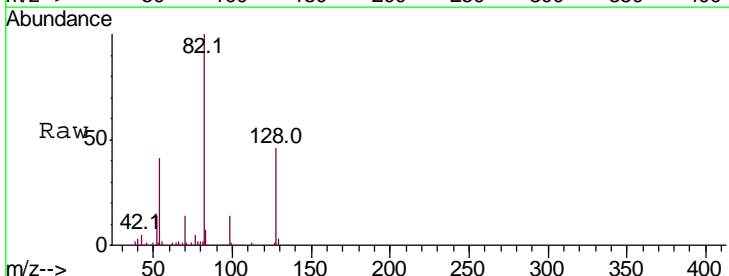
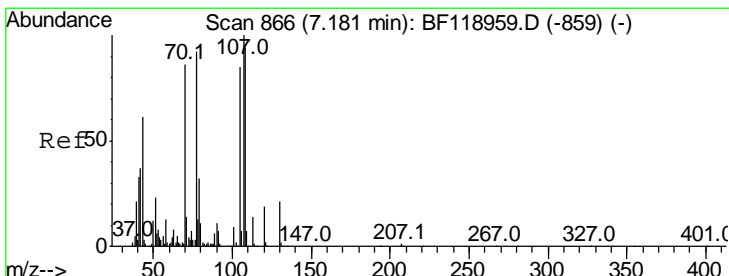
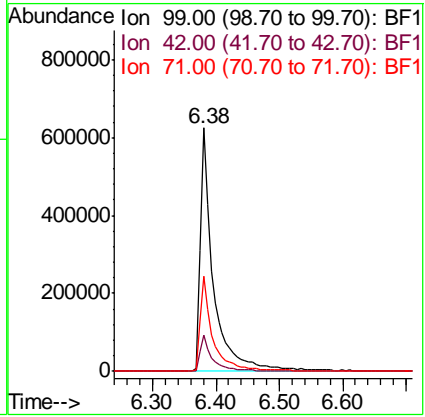




#7
 Phenol-d6
 Concen: 99.643 ng
 RT: 6.38 min Scan# 730
 Delta R.T. 0.00 min
 Lab File: BF119393.D
 Acq: 12 Mar 2020 21:29

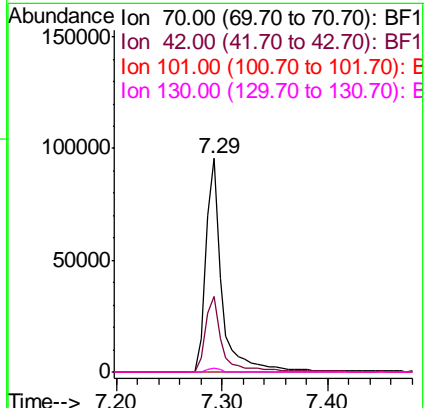
Instrument :
 BNA_F
 ClientSampled :

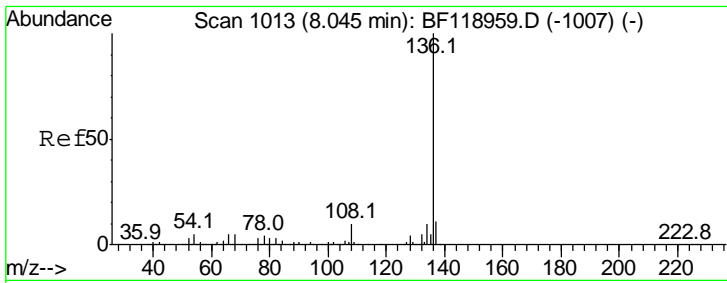
Tgt Ion	Resp	Lower	Upper
99	100		
42	14.9	12.6	18.8
71	39.0	31.0	46.4



#19
 n-Nitroso-di-n-propylamine
 Concen: 19.338 ng
 RT: 7.29 min Scan# 885
 Delta R.T. 0.15 min
 Lab File: BF119393.D
 Acq: 12 Mar 2020 21:29

Tgt Ion	Resp	Lower	Upper
70	100		
42	35.1	38.0	57.0#
101	0.0	8.2	12.4#
130	2.1	18.2	27.4#

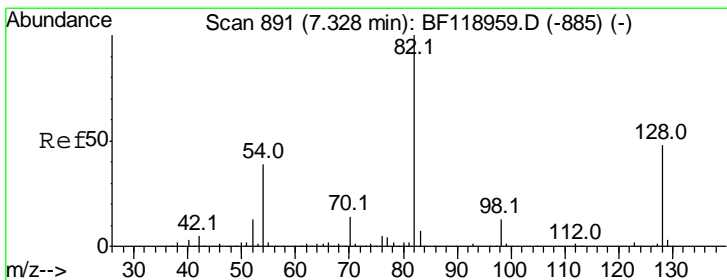
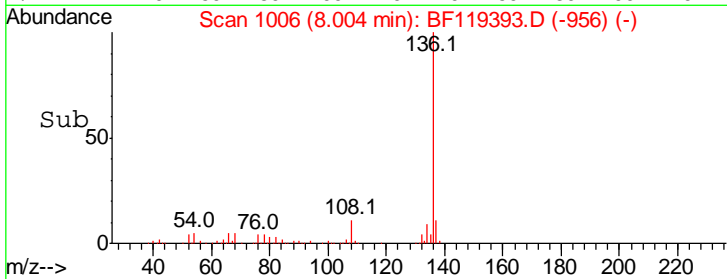
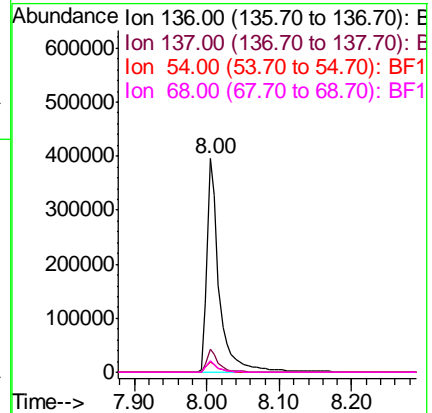
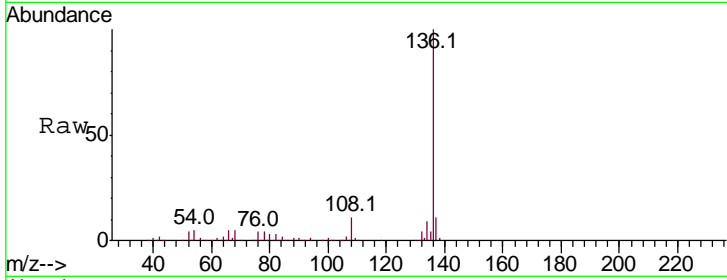




#21
 Naphthalene-d8
 Concen: 20.000 ng
 RT: 8.00 min Scan# 1006
 Delta R.T. -0.01 min
 Lab File: BF119393.D
 Acq: 12 Mar 2020 21:29

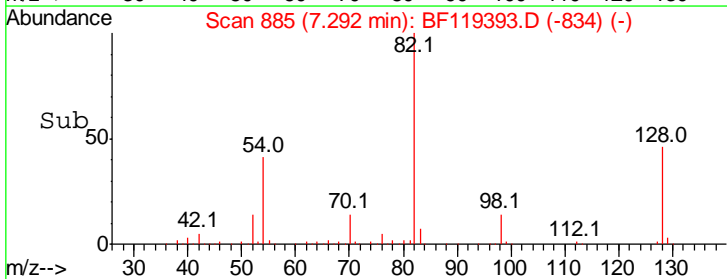
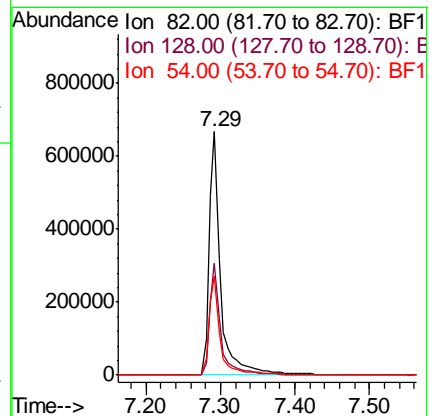
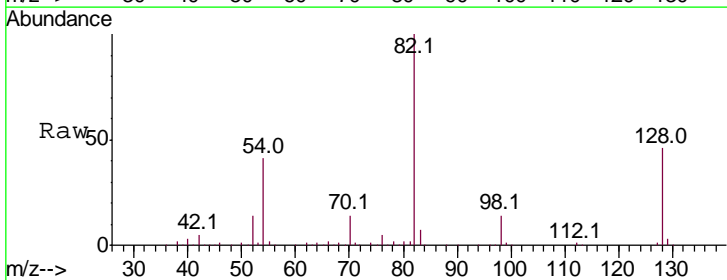
Instrument :
 BNA_F
 ClientSampled :

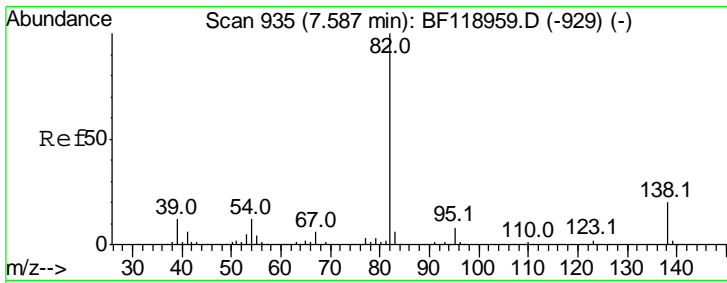
Tgt Ion	Resp	Lower	Upper
136	100		
137	10.8	8.8	13.2
54	5.0	3.8	5.6
68	5.3	3.9	5.9



#23
 Nitrobenzene-d5
 Concen: 82.179 ng
 RT: 7.29 min Scan# 885
 Delta R.T. 0.00 min
 Lab File: BF119393.D
 Acq: 12 Mar 2020 21:29

Tgt Ion	Resp	Lower	Upper
82	100		
128	45.7	37.9	56.9
54	40.5	33.4	50.2

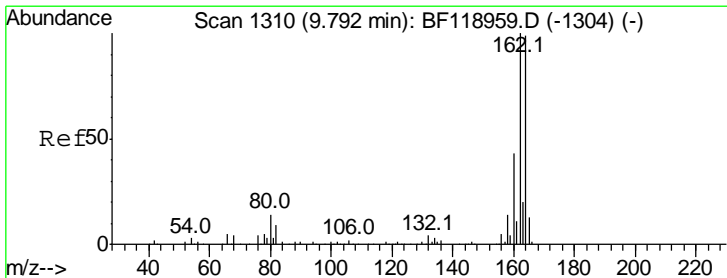
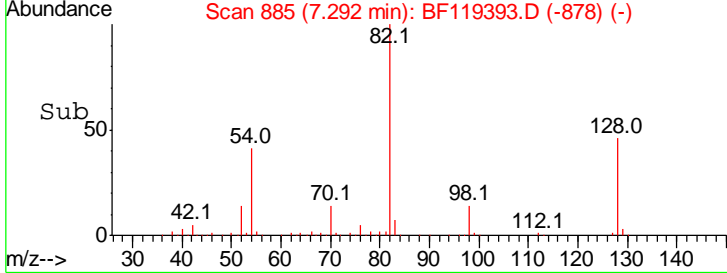
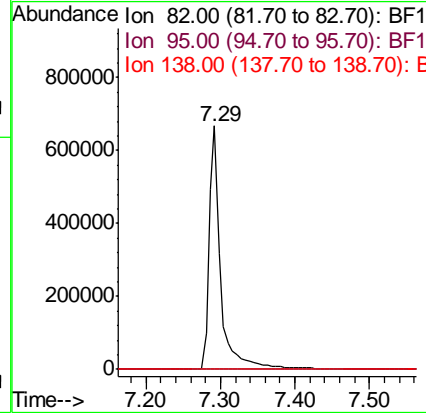
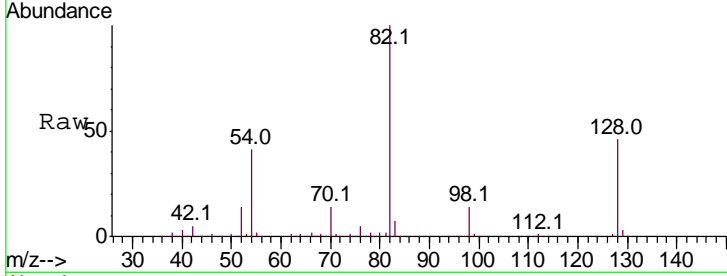




#25
 Isophorone
 Concen: 47.319 ng
 RT: 7.29 min Scan# 885
 Delta R.T. -0.26 min
 Lab File: BF119393.D
 Acq: 12 Mar 2020 21:29

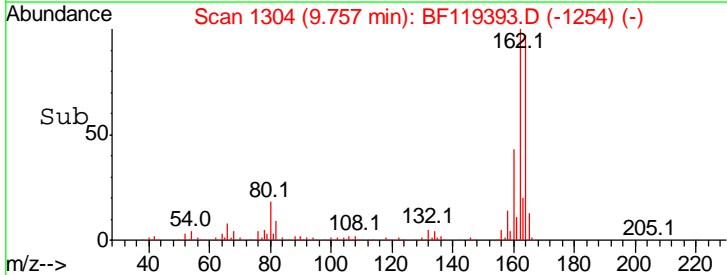
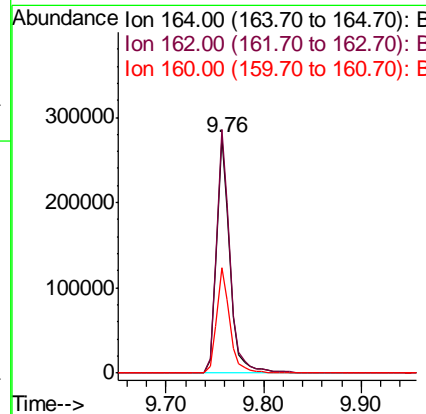
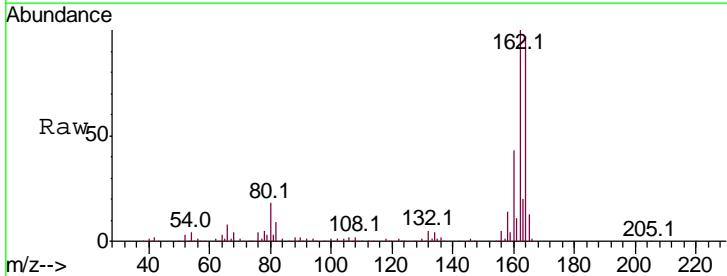
Instrument :
 BNA_F
 ClientSampled :

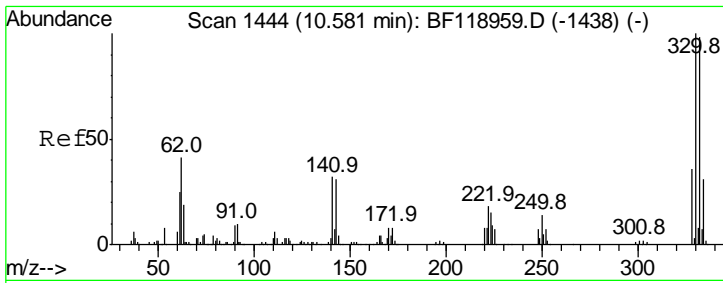
Tgt Ion	Resp	Lower	Upper
82	100		
95	0.0	6.4	9.6#
138	0.0	15.7	23.5#



#39
 Acenaphthene-d10
 Concen: 20.000 ng
 RT: 9.76 min Scan# 1304
 Delta R.T. -0.01 min
 Lab File: BF119393.D
 Acq: 12 Mar 2020 21:29

Tgt Ion	Resp	Lower	Upper
164	100		
162	103.3	81.8	122.8
160	44.7	36.0	54.0

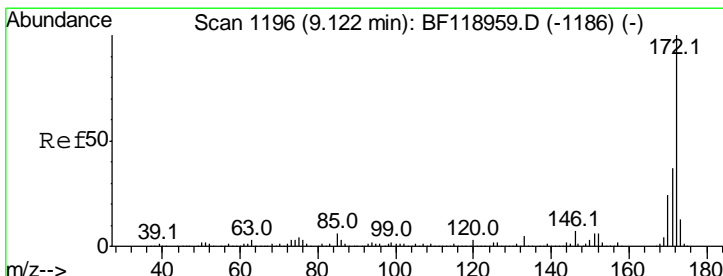
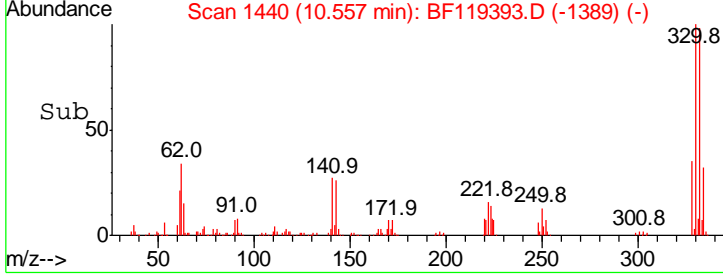
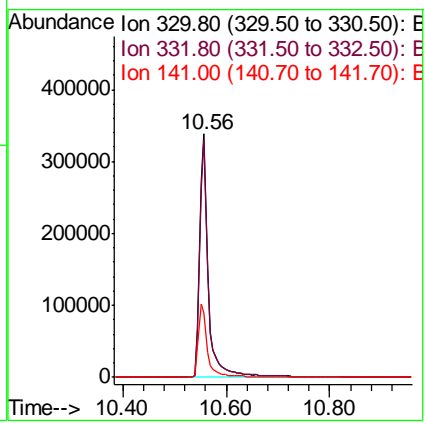
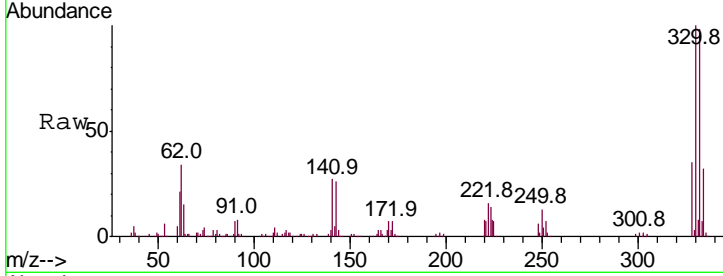




#42
 2,4,6-Tribromophenol
 Concen: 113.275 ng
 RT: 10.56 min Scan# 1440
 Delta R.T. 0.00 min
 Lab File: BF119393.D
 Acq: 12 Mar 2020 21:29

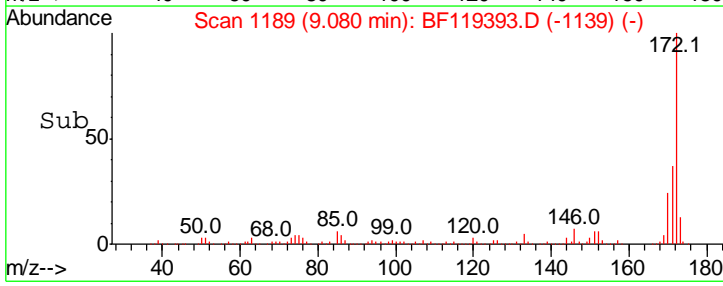
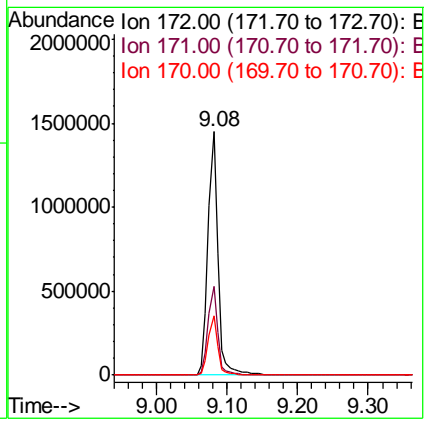
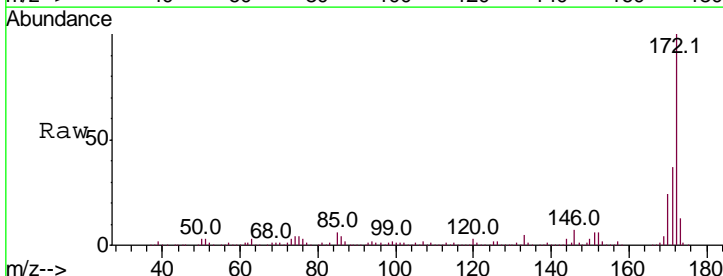
Instrument :
 BNA_F
 ClientSampled :

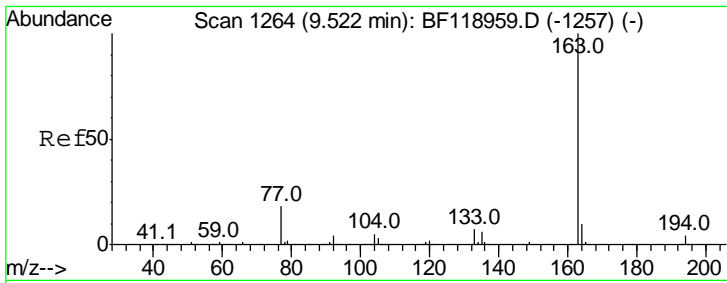
Tgt Ion	Resp	Lower	Upper
330	100		
332	97.0	76.0	114.0
141	32.0	22.9	34.3



#45
 2-Fluorobiphenyl
 Concen: 79.939 ng
 RT: 9.08 min Scan# 1189
 Delta R.T. -0.01 min
 Lab File: BF119393.D
 Acq: 12 Mar 2020 21:29

Tgt Ion	Resp	Lower	Upper
172	100		
171	36.6	30.6	45.8
170	24.4	20.2	30.2



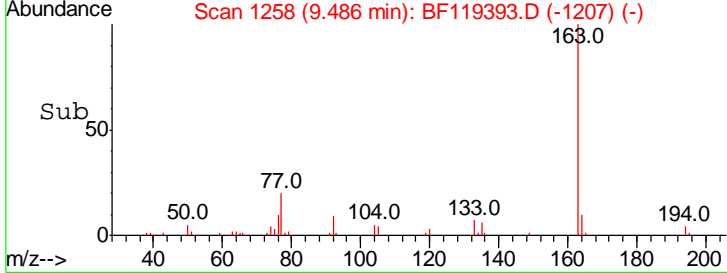
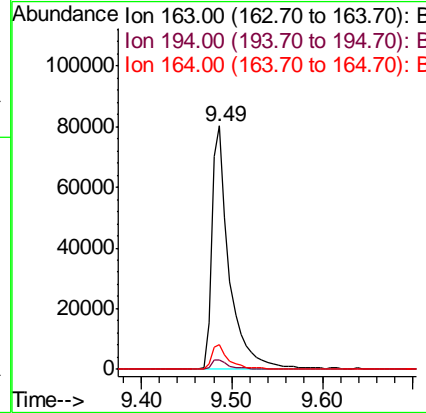
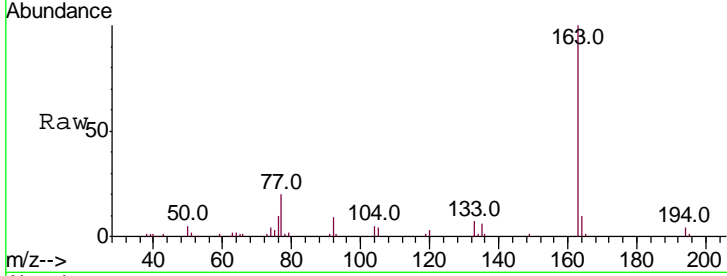


#50
 Dimethylphthalate
 Concen: 5.411 ng
 RT: 9.49 min Scan# 1258
 Delta R.T. 0.00 min
 Lab File: BF119393.D
 Acq: 12 Mar 2020 21:29

Instrument :
 BNA_F
 ClientSampled :

Tgt Ion:163 Resp: 108348

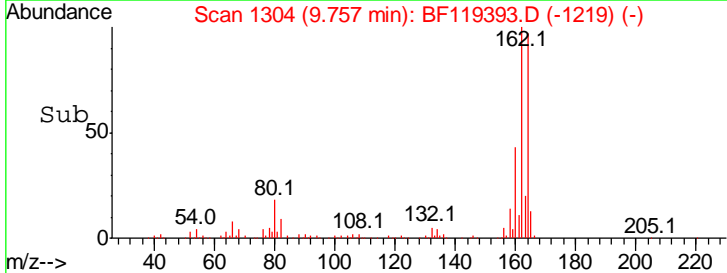
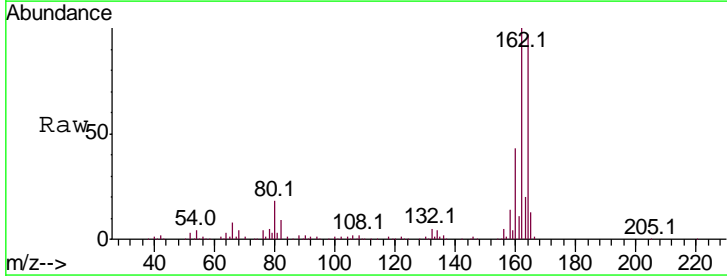
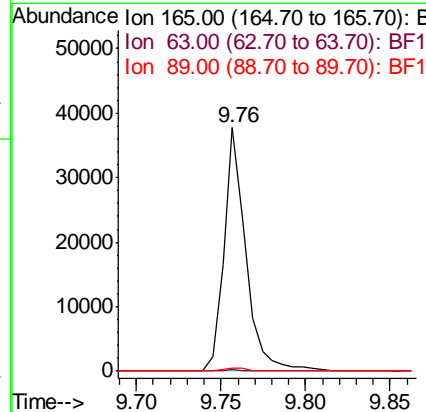
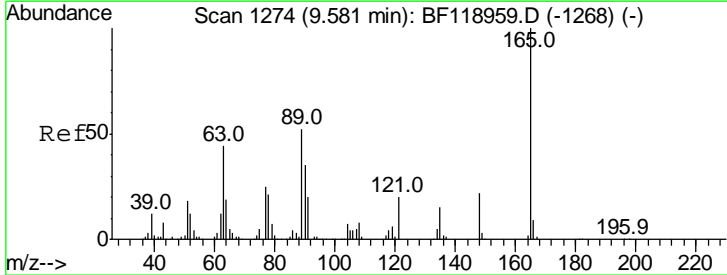
Ion	Ratio	Lower	Upper
163	100		
194	4.1	3.5	5.3
164	10.0	8.4	12.6

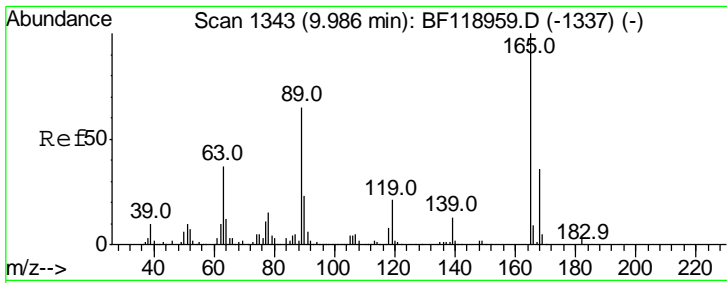


#51
 2,6-Dinitrotoluene
 Concen: 7.659 ng
 RT: 9.76 min Scan# 1304
 Delta R.T. 0.20 min
 Lab File: BF119393.D
 Acq: 12 Mar 2020 21:29

Tgt Ion:165 Resp: 34072

Ion	Ratio	Lower	Upper
165	100		
63	0.9	34.3	51.5#
89	1.4	38.3	57.5#

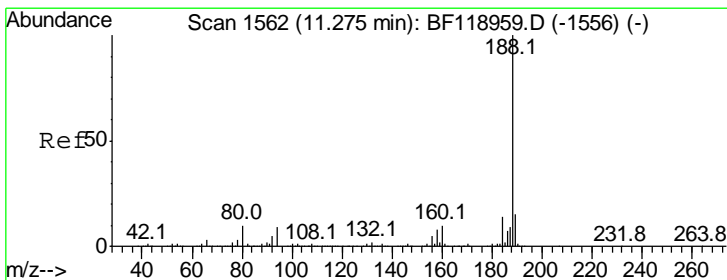
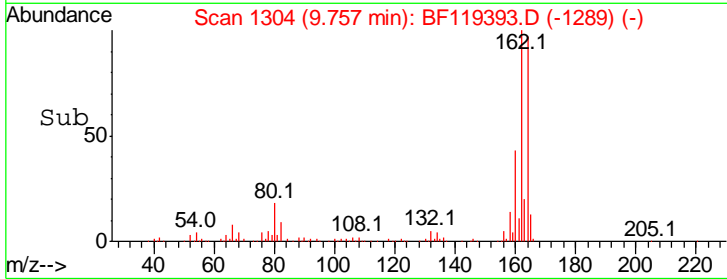
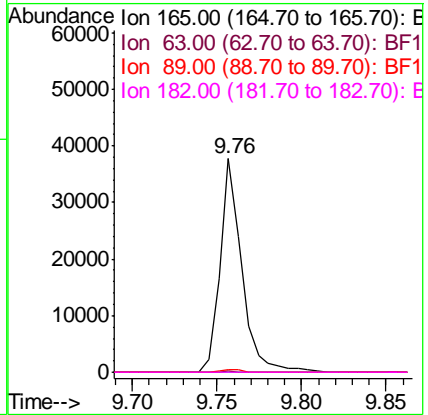
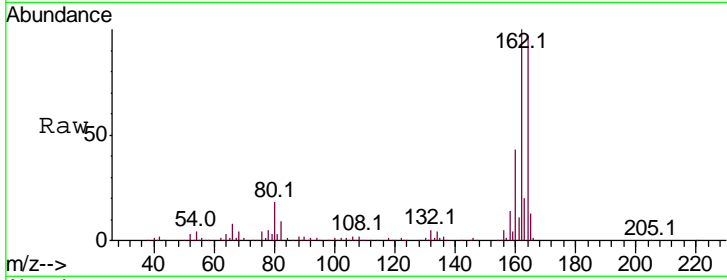




#57
 2,4-Dinitrotoluene
 Concen: 5.909 ng
 RT: 9.76 min Scan# 1304
 Delta R.T. -0.21 min
 Lab File: BF119393.D
 Acq: 12 Mar 2020 21:29

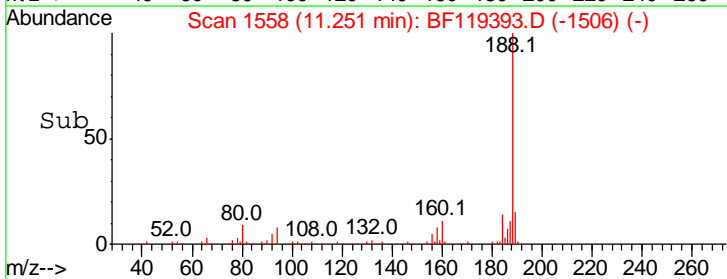
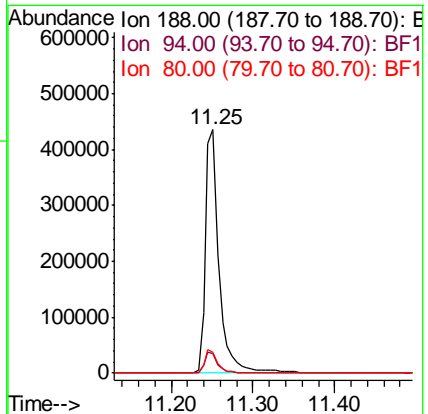
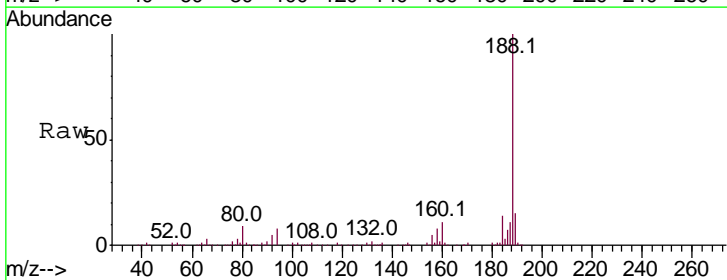
Instrument :
 BNA_F
 ClientSampled :

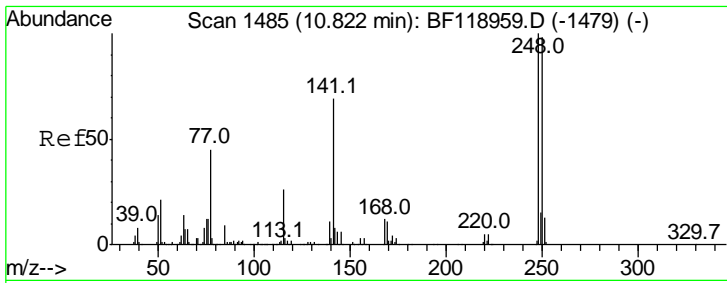
Tgt Ion	Resp	Lower	Upper
165	100		
63	0.9	42.3	63.5#
89	1.4	60.2	90.4#
182	0.0	2.3	3.5#



#64
 Phenanthrene-d10
 Concen: 20.000 ng
 RT: 11.25 min Scan# 1558
 Delta R.T. 0.01 min
 Lab File: BF119393.D
 Acq: 12 Mar 2020 21:29

Tgt Ion	Resp	Lower	Upper
188	100		
94	8.0	7.1	10.7
80	8.8	7.8	11.8

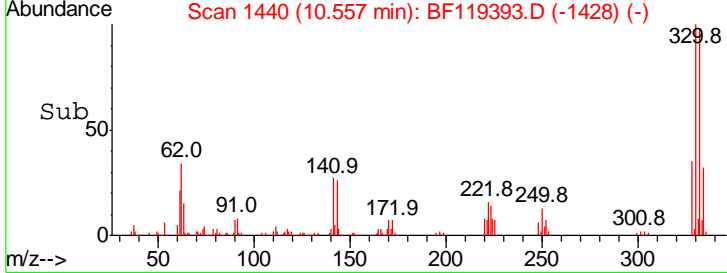
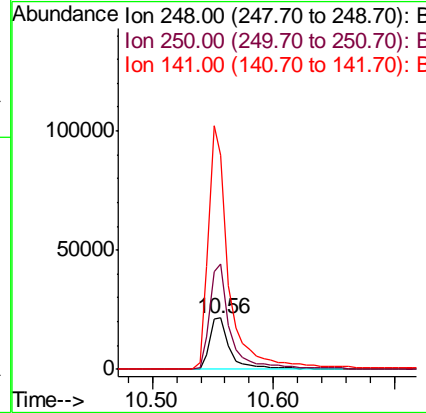
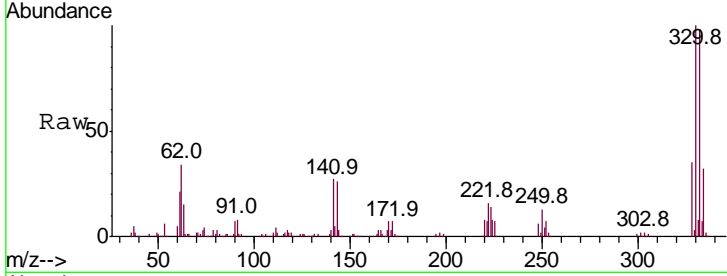




#67
 4-Bromophenyl-phenylether
 Concen: 3.921 ng
 RT: 10.56 min Scan# 1440
 Delta R.T. -0.23 min
 Lab File: BF119393.D
 Acq: 12 Mar 2020 21:29

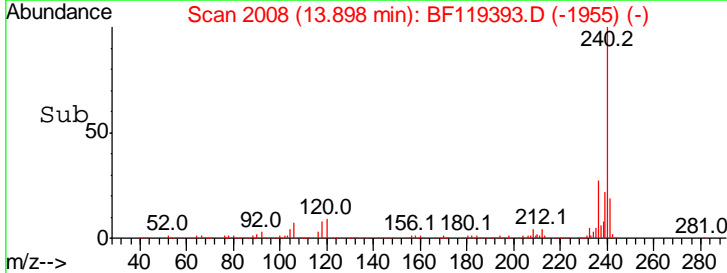
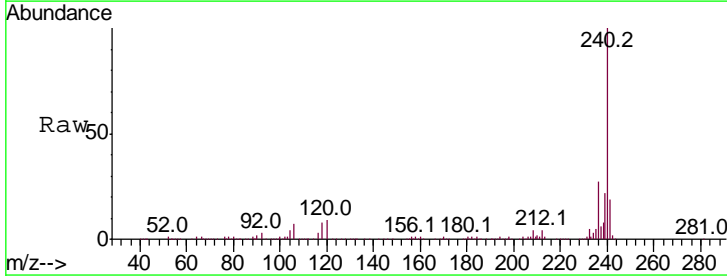
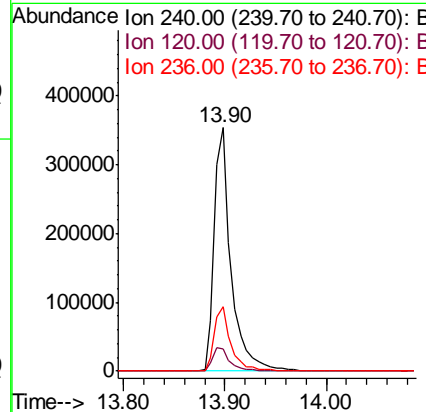
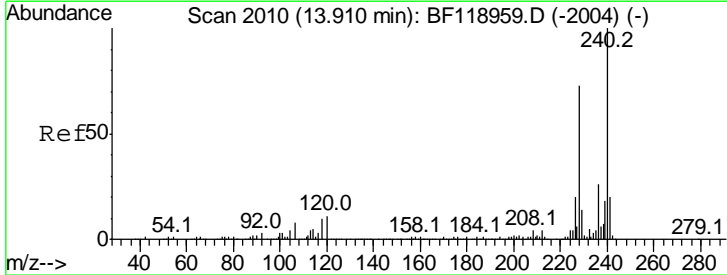
Instrument :
 BNA_F
 ClientSampled :

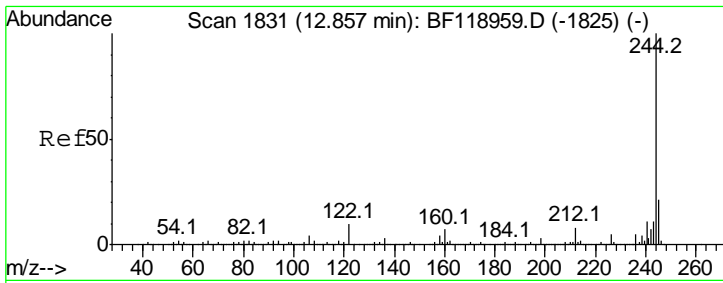
Tgt Ion	Resp	Lower	Upper
248	25925		
248	100		
250	204.4	76.7	115.1#
141	416.5	60.7	91.1#



#76
 Chrysene-d12
 Concen: 20.000 ng
 RT: 13.90 min Scan# 2008
 Delta R.T. 0.01 min
 Lab File: BF119393.D
 Acq: 12 Mar 2020 21:29

Tgt Ion	Resp	Lower	Upper
240	408314		
240	100		
120	8.9	8.4	12.6
236	26.7	21.0	31.4



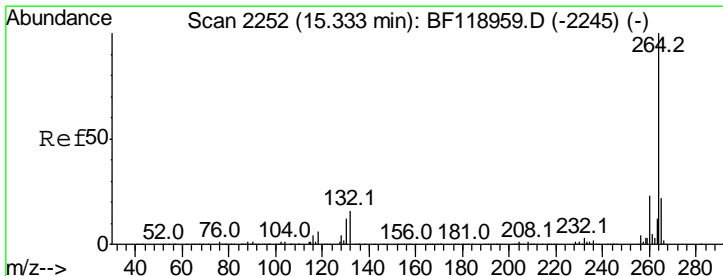
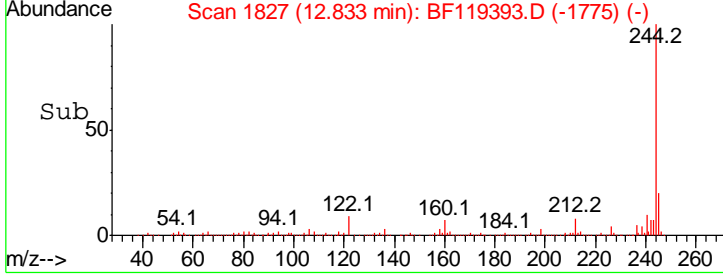
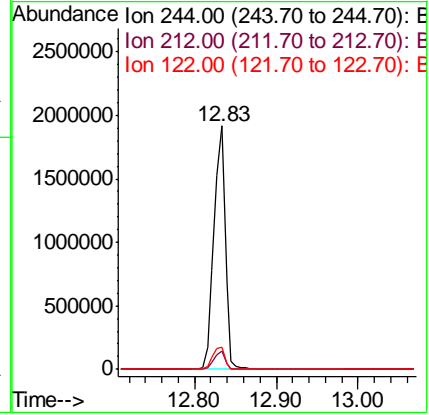
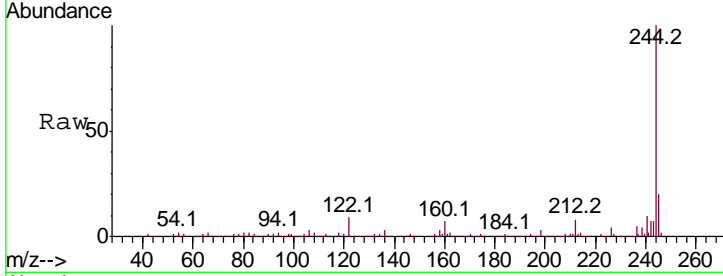


#79
 Terphenyl-d14
 Concen: 77.988 ng
 RT: 12.83 min Scan# 1827
 Delta R.T. 0.01 min
 Lab File: BF119393.D
 Acq: 12 Mar 2020 21:29

Instrument :
 BNA_F
 ClientSampled :

Tgt Ion: 244 Resp: 1849572

Ion	Ratio	Lower	Upper
244	100		
212	7.5	6.6	10.0
122	9.3	8.2	12.2



#87
 Perylene-d12
 Concen: 20.000 ng
 RT: 15.33 min Scan# 2252
 Delta R.T. 0.02 min
 Lab File: BF119393.D
 Acq: 12 Mar 2020 21:29

Tgt Ion: 264 Resp: 419703

Ion	Ratio	Lower	Upper
264	100		
260	23.9	19.4	29.2
265	21.3	17.7	26.5

