

Data Path : Z:\HPCHEM1\BNA F\DATA\BF031318\
 Data File : BF103615.D
 Acq On : 13 Mar 2018 20:09
 Operator : SJ/JU
 Sample : J1776-19
 Misc :
 ALS Vial : 20 Sample Multiplier: 1

Instrument :
 BNA_F
 ClientSampleId :

Quant Time: Mar 13 22:06:24 2018
 Quant Method : Z:\HPCHEM1\BNA F\METHODS\8270-BF022218.M
 Quant Title : ASP BNA STANDARDS FOR 5 POINT CALIBRATION
 QLast Update : Fri Mar 09 11:47:13 2018
 Response via : Initial Calibration

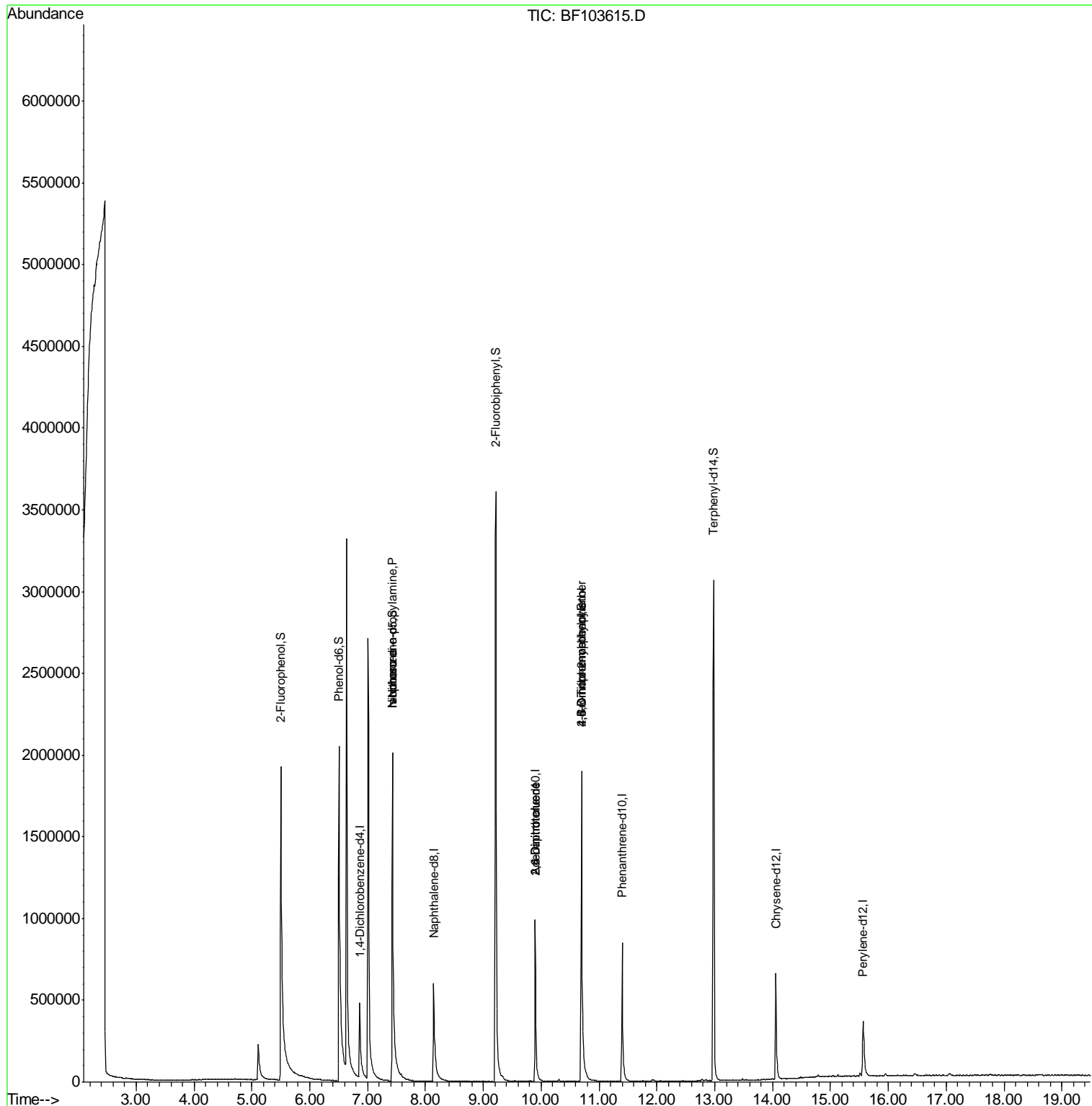
Internal Standards	R.T.	QIon	Response	Conc	Units	Dev(Min)
1) 1,4-Dichlorobenzene-d4	6.86	152	134519	20.00	ng	0.00
21) Naphthalene-d8	8.14	136	596752	20.00	ng	-0.01
38) Acenaphthene-d10	9.90	164	267349	20.00	ng	-0.01
63) Phenanthrene-d10	11.40	188	483911	20.00	ng	0.00
75) Chrysene-d12	14.06	240	302984	20.00	ng	0.00
86) Perylene-d12	15.57	264	238717	20.00	ng	0.00
System Monitoring Compounds						
5) 2-Fluorophenol	5.50	112	1189665	133.76	ng	0.01
7) Phenol-d6	6.50	99	1313463	120.68	ng	0.00
23) Nitrobenzene-d5	7.43	82	1099741	105.24	ng	-0.01
41) 2,4,6-Tribromophenol	10.70	330	302989	133.89	ng	0.00
44) 2-Fluorobiphenyl	9.22	172	1556633	106.45	ng	0.00
78) Terphenyl-d14	12.98	244	1300348	103.17	ng	0.00
Target Compounds						
9) Benzaldehyde	6.50	77	1811	Below Cal		Qvalue # 1
19) n-Nitroso-di-n-propylamine	7.43	70	139300	20.566	ng	# 83
25) Isophorone	7.43	82	1108076	53.842	ng	# 64
50) 2,6-Dinitrotoluene	9.90	165	34262	7.612	ng	# 26
56) 2,4-Dinitrotoluene	9.90	165	34852	6.123	ng	# 24
64) 4,6-Dinitro-2-methylphenol	10.70	198	604	5.129	ng	# 1
66) 4-Bromophenyl-phenylether	10.70	248	21000	4.166	ng	# 1

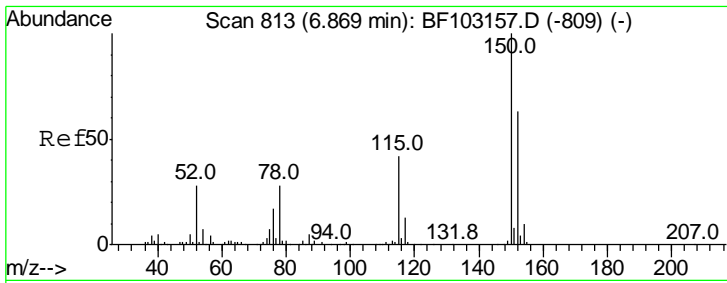
(#) = qualifier out of range (m) = manual integration (+) = signals summed

Data Path : Z:\HPCHEM1\BNA F\DATA\BF031318\
 Data File : BF103615.D
 Acq On : 13 Mar 2018 20:09
 Operator : SJ/JU
 Sample : J1776-19
 Misc :
 ALS Vial : 20 Sample Multiplier: 1

Instrument :
 BNA_F
 ClientSampleId :

Quant Time: Mar 13 22:06:24 2018
 Quant Method : Z:\HPCHEM1\BNA F\METHODS\8270-BF022218.M
 Quant Title : ASP BNA STANDARDS FOR 5 POINT CALIBRATION
 QLast Update : Fri Mar 09 11:47:13 2018
 Response via : Initial Calibration

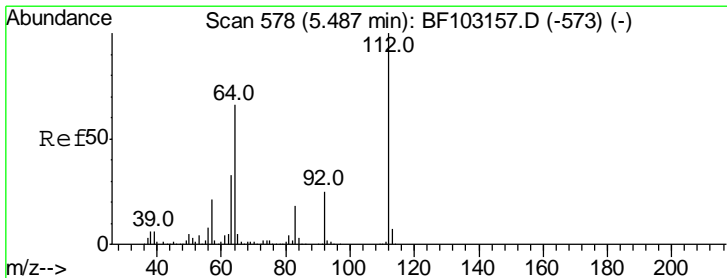
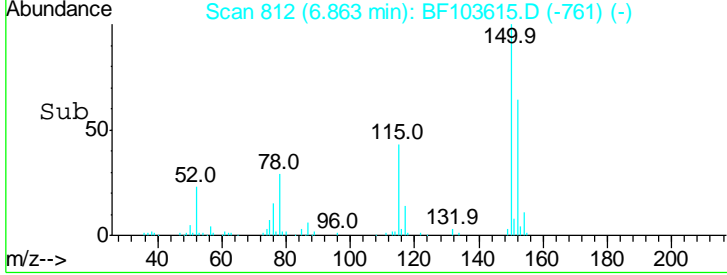
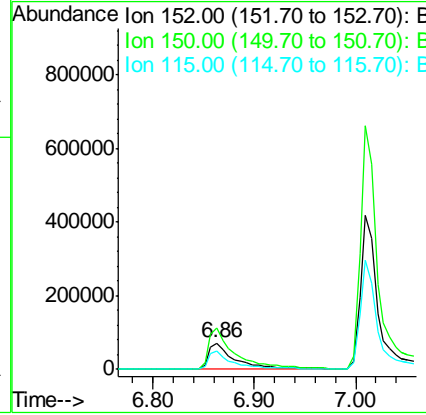
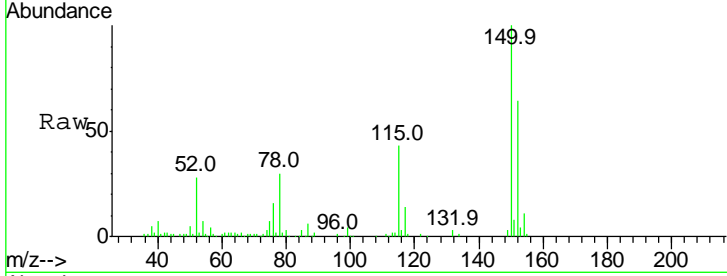




#1
 1,4-Dichlorobenzene-d4
 Concen: 20.000 ng
 RT: 6.86 min Scan# 812
 Delta R.T. 0.00 min
 Lab File: BF103615.D
 Acq: 13 Mar 2018 20:09

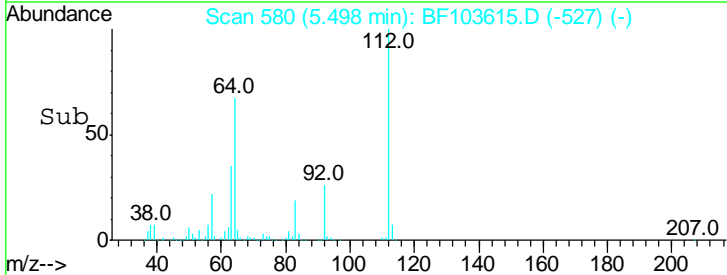
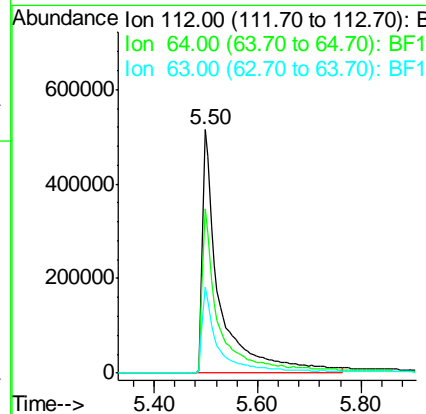
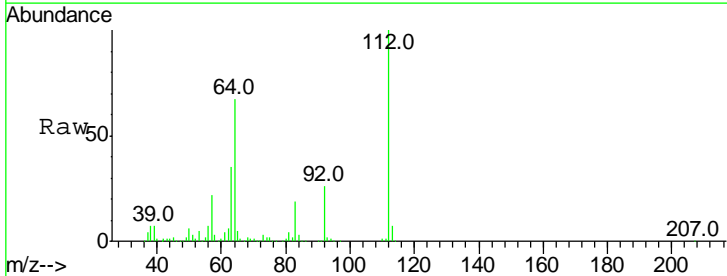
Instrument :
 BNA_F
 ClientSampled :

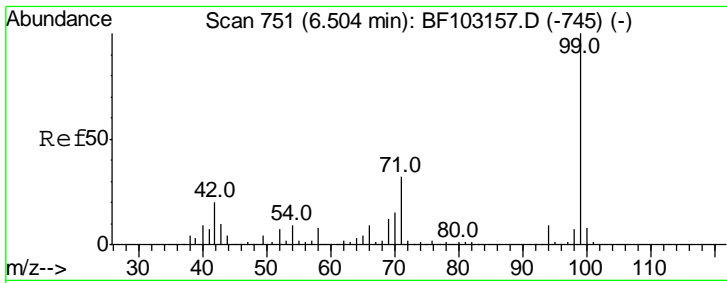
Tgt Ion	Resp	Lower	Upper
152	134519		
152	100		
150	155.6	124.6	186.8
115	67.2	50.1	75.1



#5
 2-Fluorophenol
 Concen: 133.757 ng
 RT: 5.50 min Scan# 580
 Delta R.T. 0.01 min
 Lab File: BF103615.D
 Acq: 13 Mar 2018 20:09

Tgt Ion	Resp	Lower	Upper
112	1189665		
112	100		
64	67.5	47.9	71.9
63	35.4	23.7	35.5

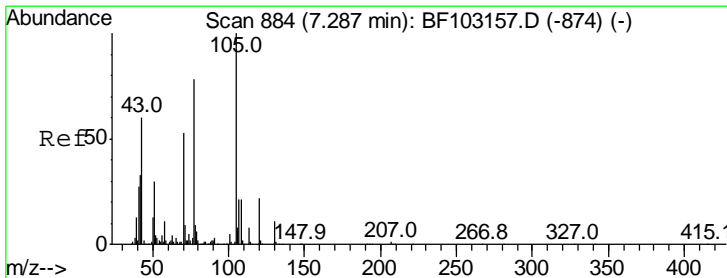
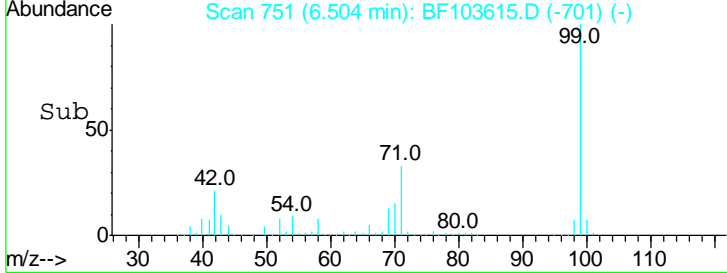
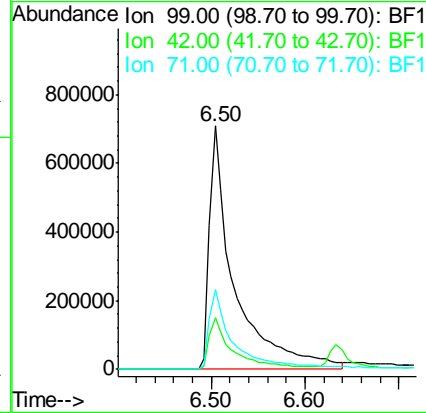
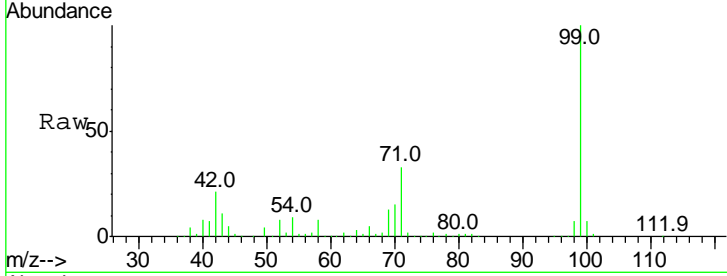




#7
 Phenol-d6
 Concen: 120.685 ng
 RT: 6.50 min Scan# 751
 Delta R.T. -0.01 min
 Lab File: BF103615.D
 Acq: 13 Mar 2018 20:09

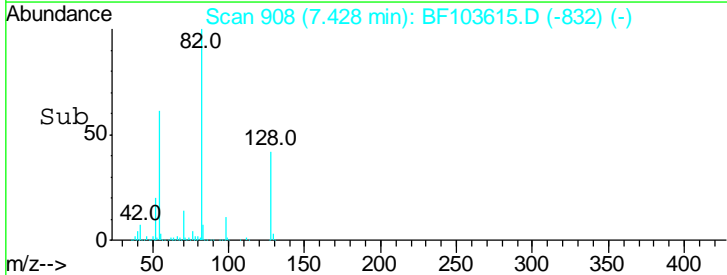
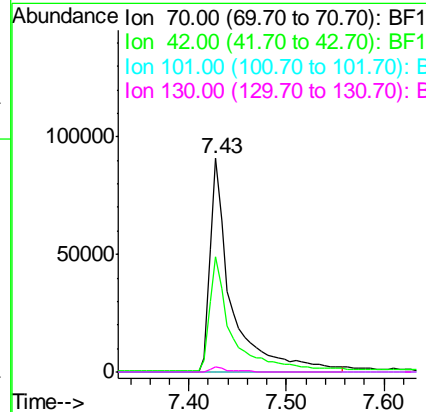
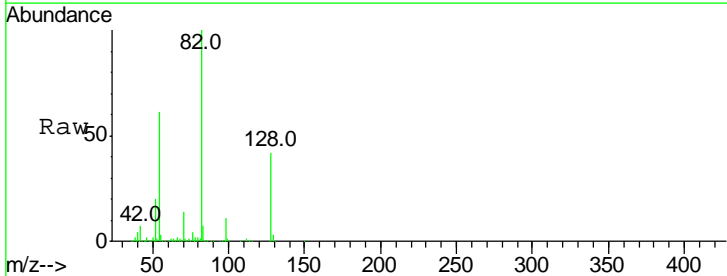
Instrument :
 BNA_F
 ClientSampled :

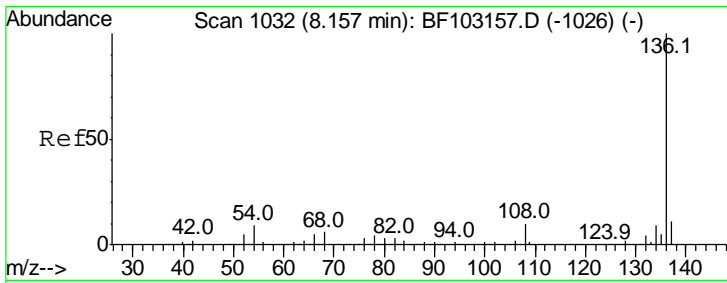
Tgt Ion	Resp	Lower	Upper
99	100		
42	21.0	14.5	21.7
71	32.6	25.4	38.0



#19
 n-Nitroso-di-n-propylamine
 Concen: 20.566 ng
 RT: 7.43 min Scan# 908
 Delta R.T. 0.15 min
 Lab File: BF103615.D
 Acq: 13 Mar 2018 20:09

Tgt Ion	Resp	Lower	Upper
70	100		
42	54.0	47.5	71.3
101	0.0	7.4	11.2#
130	2.3	16.6	25.0#

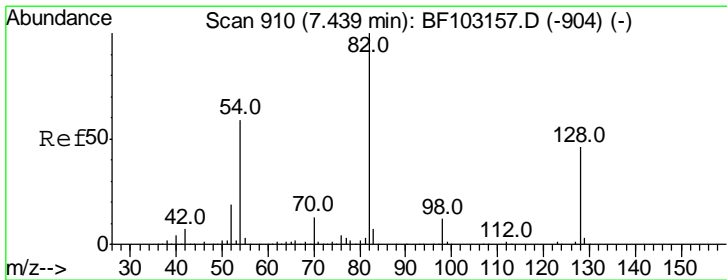
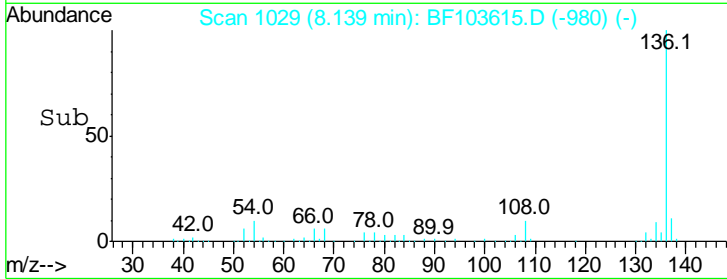
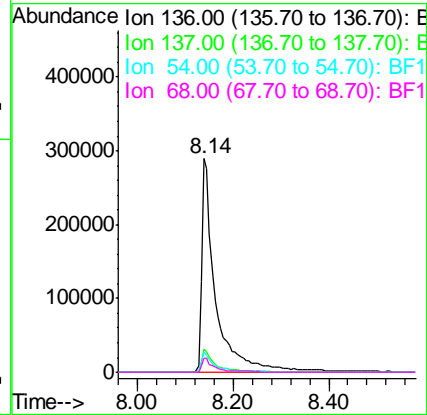
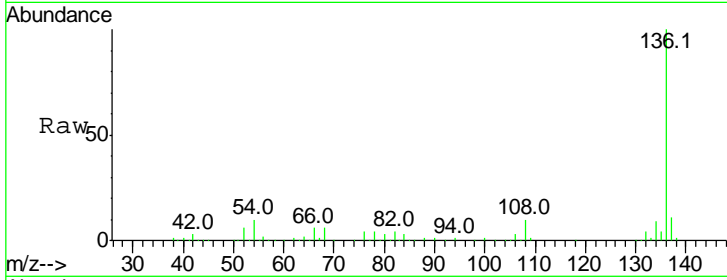




#21
 Naphthalene-d8
 Concen: 20.000 ng
 RT: 8.14 min Scan# 1029
 Delta R.T. -0.01 min
 Lab File: BF103615.D
 Acq: 13 Mar 2018 20:09

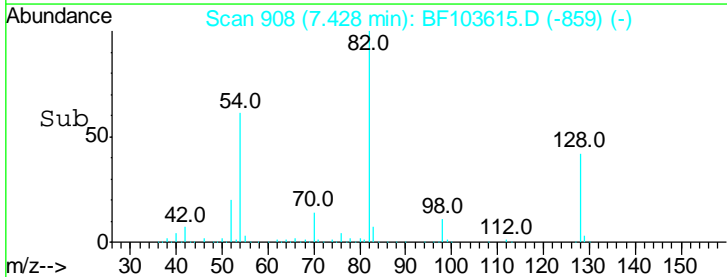
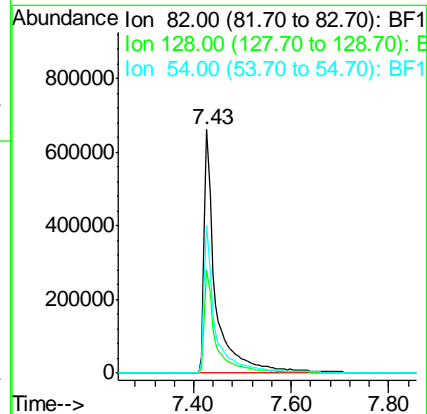
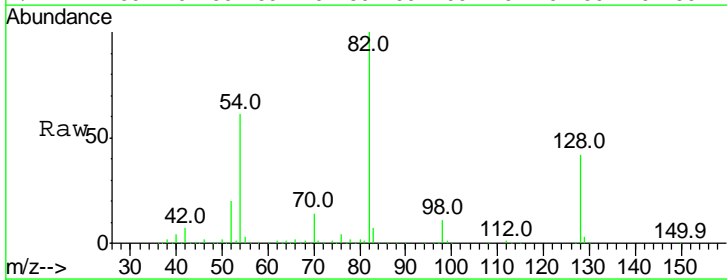
Instrument :
 BNA_F
 ClientSampled :

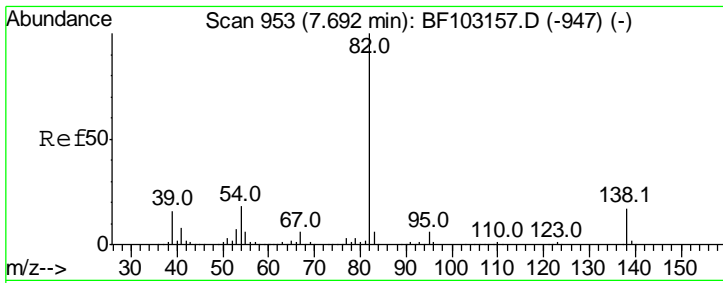
Tgt Ion	Resp	Lower	Upper
136	100		
137	10.7	8.9	13.3
54	9.7	6.6	9.8
68	6.4	5.0	7.4



#23
 Nitrobenzene-d5
 Concen: 105.244 ng
 RT: 7.43 min Scan# 908
 Delta R.T. -0.01 min
 Lab File: BF103615.D
 Acq: 13 Mar 2018 20:09

Tgt Ion	Resp	Lower	Upper
82	100		
128	42.1	36.1	54.1
54	60.8	41.4	62.2

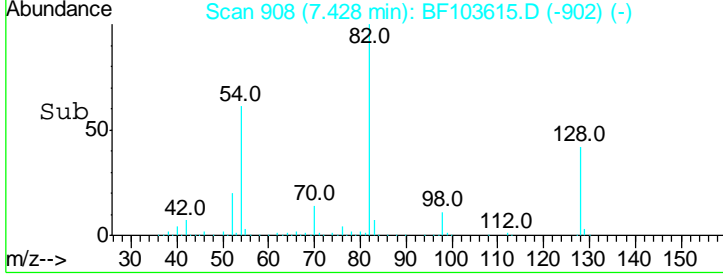
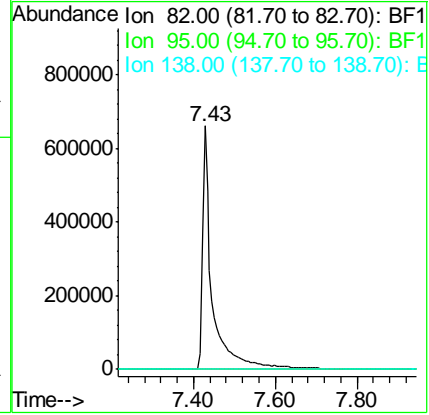
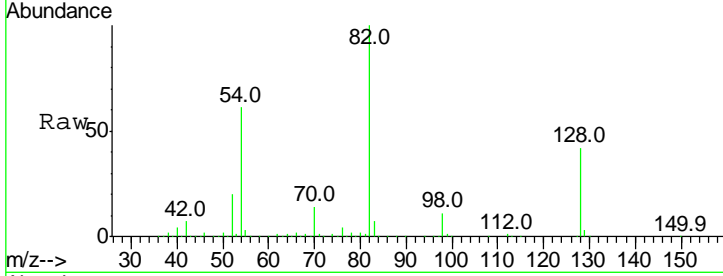




#25
 Isophorone
 Concen: 53.842 ng
 RT: 7.43 min Scan# 908
 Delta R.T. -0.26 min
 Lab File: BF103615.D
 Acq: 13 Mar 2018 20:09

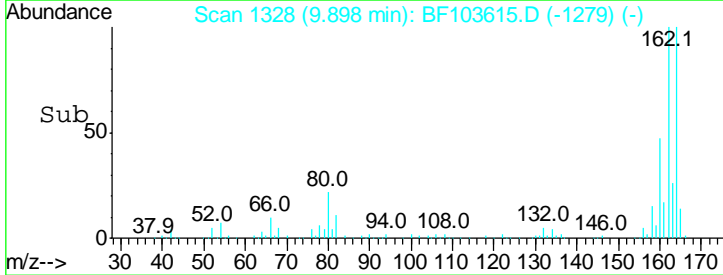
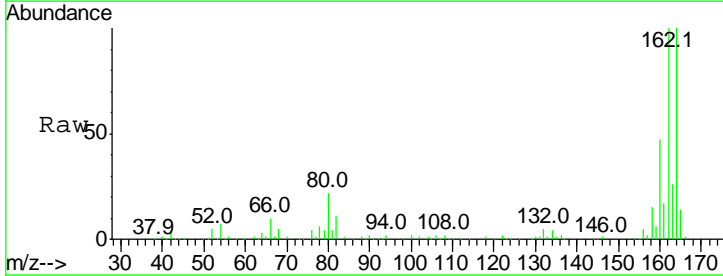
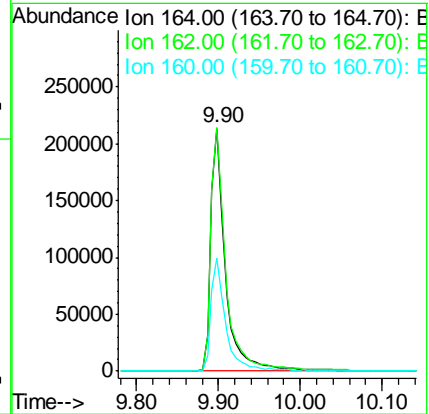
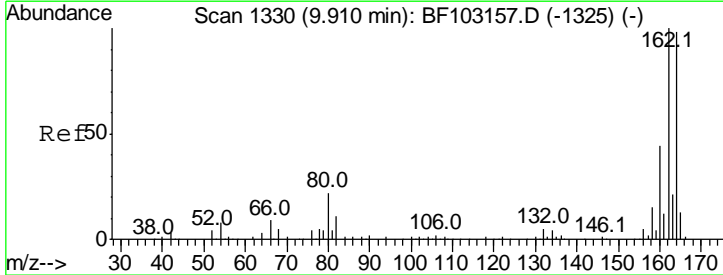
Instrument :
 BNA_F
 ClientSampled :

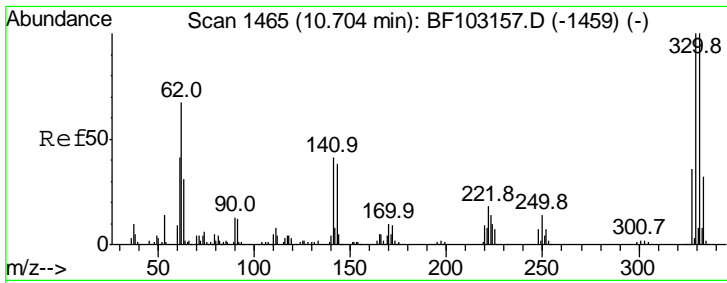
Tgt Ion	Resp	Lower	Upper
82	1108076		
Ion Ratio			
82	100		
95	0.0	5.2	7.8#
138	0.0	14.9	22.3#



#38
 Acenaphthene-d10
 Concen: 20.000 ng
 RT: 9.90 min Scan# 1328
 Delta R.T. -0.01 min
 Lab File: BF103615.D
 Acq: 13 Mar 2018 20:09

Tgt Ion	Resp	Lower	Upper
164	267349		
Ion Ratio			
164	100		
162	100.4	86.1	129.1
160	46.8	38.3	57.5

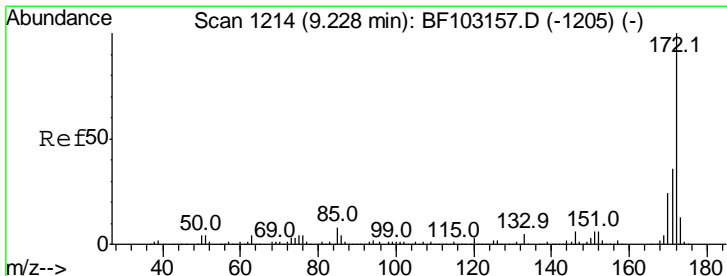
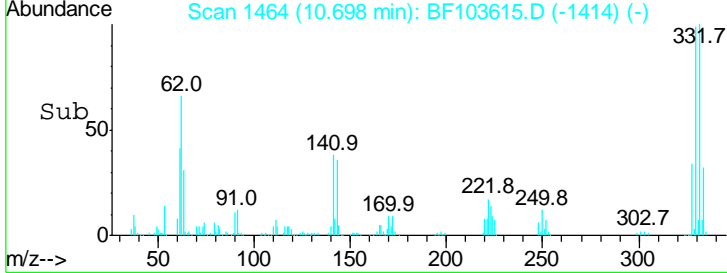
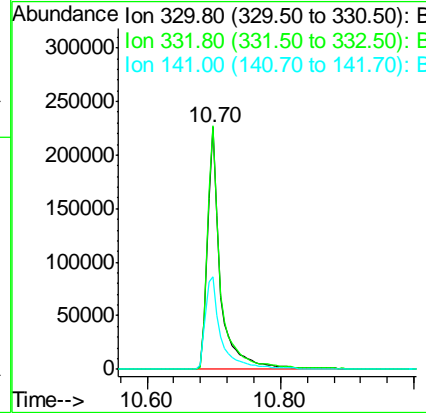
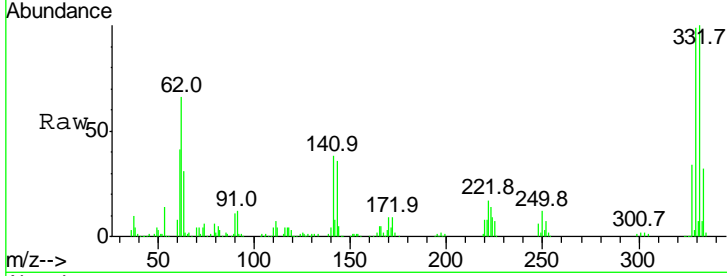




#41
 2,4,6-Tribromophenol
 Concen: 133.890 ng
 RT: 10.70 min Scan# 1464
 Delta R.T. -0.01 min
 Lab File: BF103615.D
 Acq: 13 Mar 2018 20:09

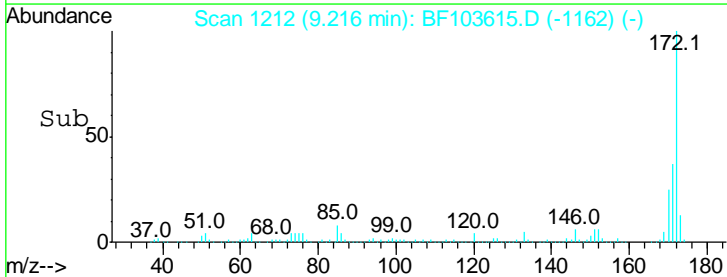
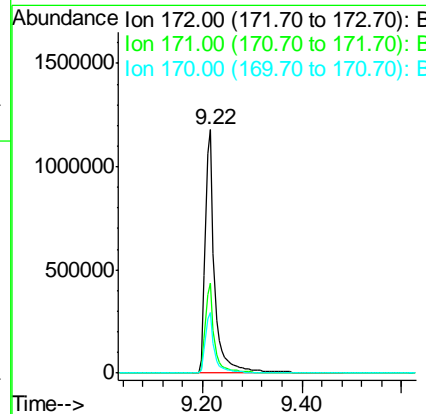
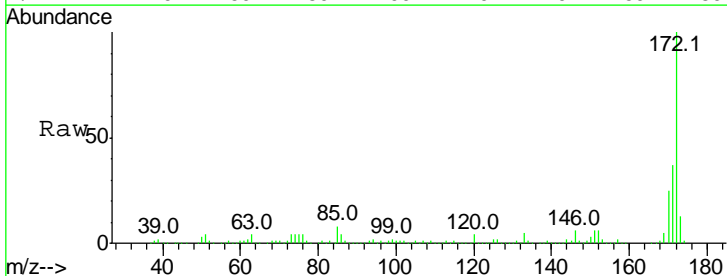
Instrument :
 BNA_F
 ClientSampled :

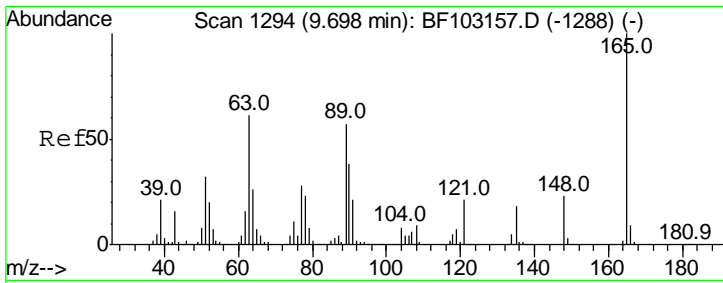
Tgt Ion	Resp	Lower	Upper
330	100		
332	102.4	77.0	115.6
141	46.3	29.9	44.9#



#44
 2-Fluorobiphenyl
 Concen: 106.450 ng
 RT: 9.22 min Scan# 1212
 Delta R.T. -0.01 min
 Lab File: BF103615.D
 Acq: 13 Mar 2018 20:09

Tgt Ion	Resp	Lower	Upper
172	100		
171	37.0	29.7	44.5
170	25.1	19.6	29.4

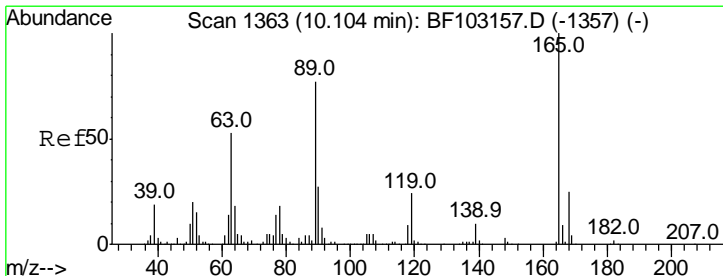
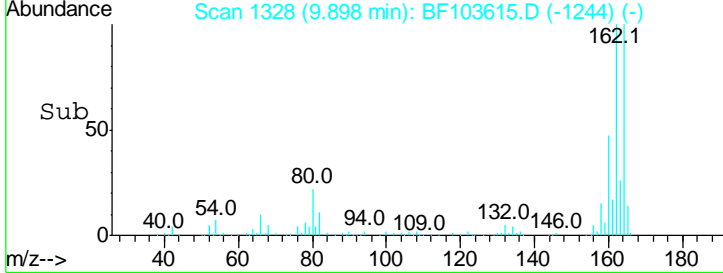
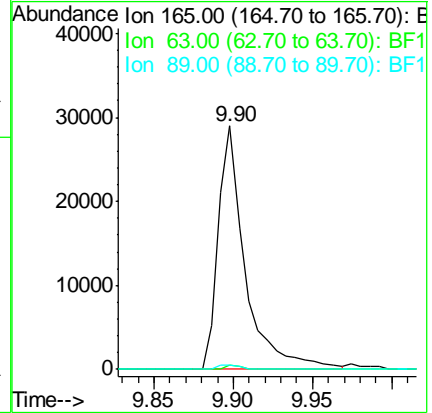
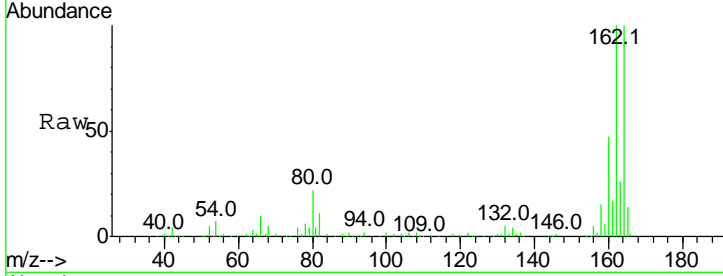




#50
 2,6-Dinitrotoluene
 Concen: 7.612 ng
 RT: 9.90 min Scan# 1328
 Delta R.T. 0.19 min
 Lab File: BF103615.D
 Acq: 13 Mar 2018 20:09

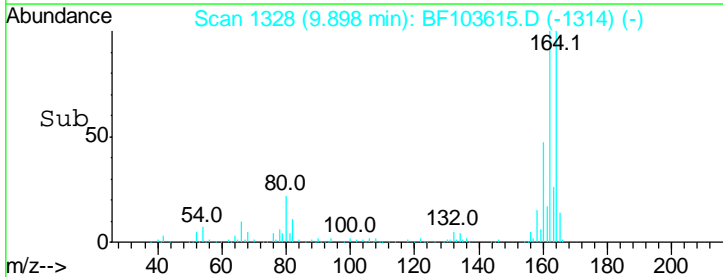
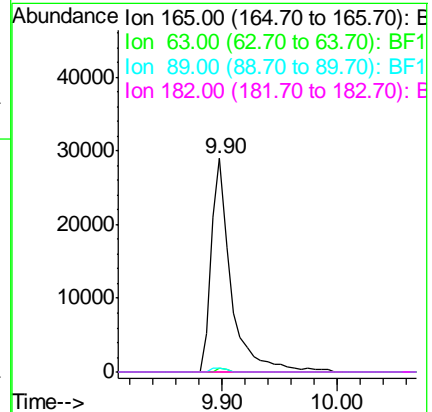
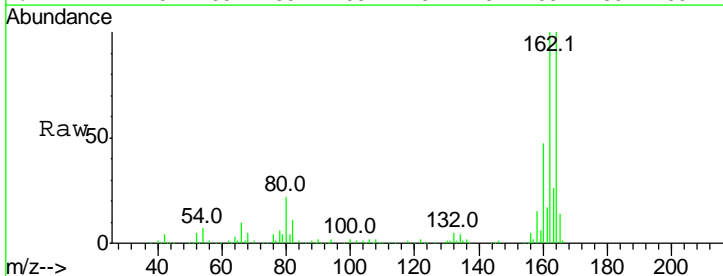
Instrument :
 BNA_F
 ClientSampled :

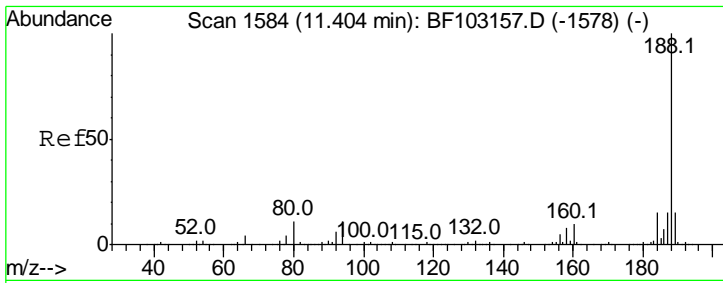
Tgt Ion	Resp	Lower	Upper
165	100		
63	1.7	44.7	67.1#
89	1.6	44.0	66.0#



#56
 2,4-Dinitrotoluene
 Concen: 6.123 ng
 RT: 9.90 min Scan# 1328
 Delta R.T. -0.22 min
 Lab File: BF103615.D
 Acq: 13 Mar 2018 20:09

Tgt Ion	Resp	Lower	Upper
165	100		
63	1.7	36.4	54.6#
89	1.6	57.8	86.6#
182	0.0	1.6	2.4#

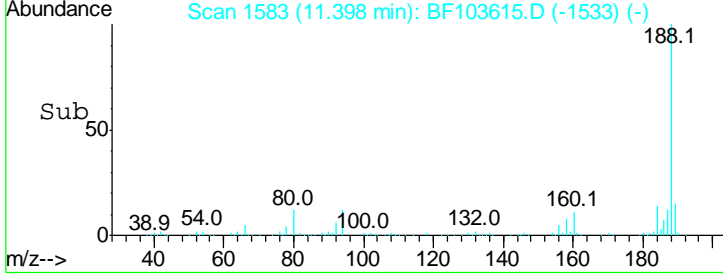
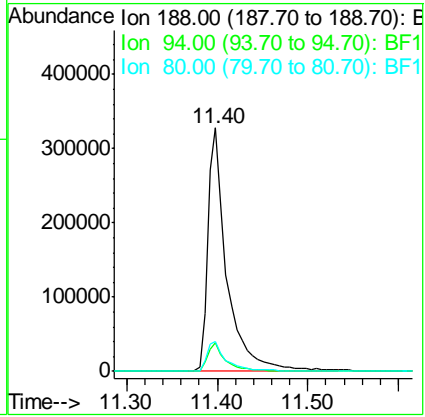
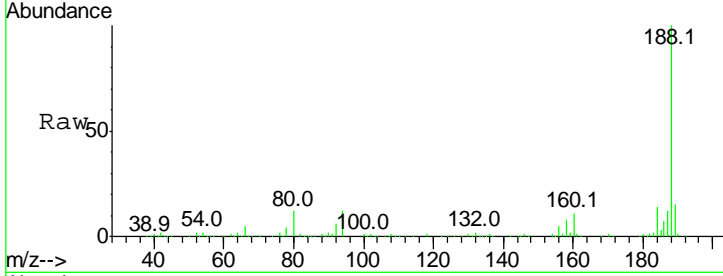




#63
 Phenanthrene-d10
 Concen: 20.000 ng
 RT: 11.40 min Scan# 1583
 Delta R.T. -0.01 min
 Lab File: BF103615.D
 Acq: 13 Mar 2018 20:09

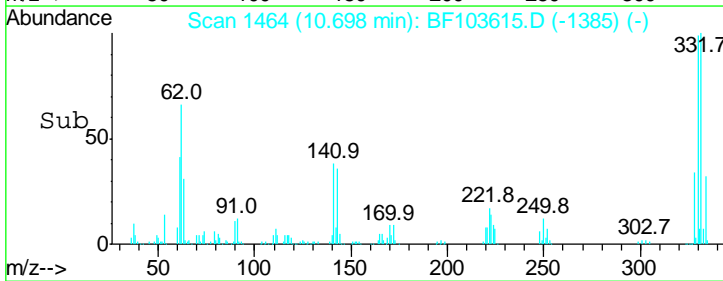
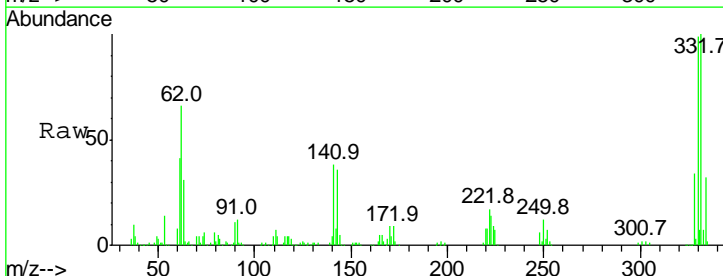
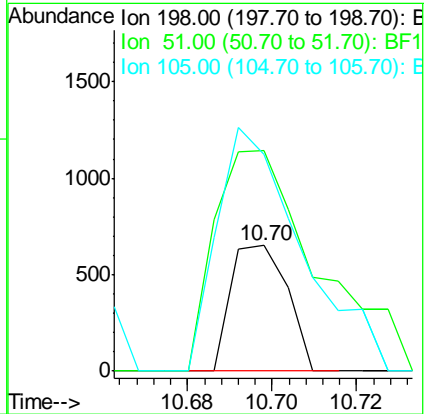
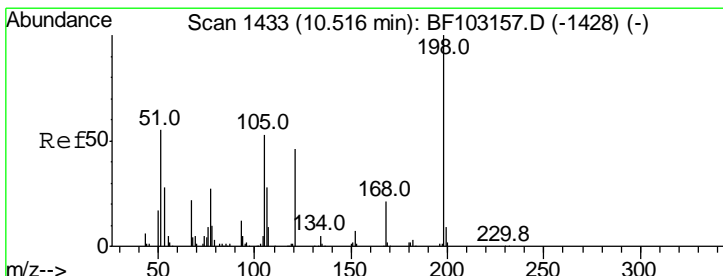
Instrument :
 BNA_F
 ClientSampled :

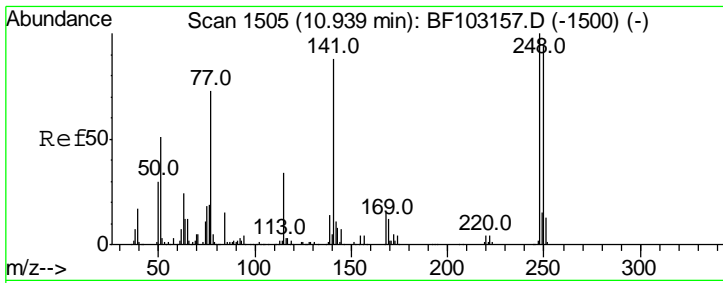
Tgt Ion	Resp	Lower	Upper
188	100		
94	12.0	8.5	12.7
80	12.4	9.2	13.8



#64
 4,6-Dinitro-2-methylphenol
 Concen: 5.129 ng
 RT: 10.70 min Scan# 1464
 Delta R.T. 0.16 min
 Lab File: BF103615.D
 Acq: 13 Mar 2018 20:09

Tgt Ion	Resp	Lower	Upper
198	100		
51	176.0	37.7	77.7#
105	172.5	36.3	76.3#

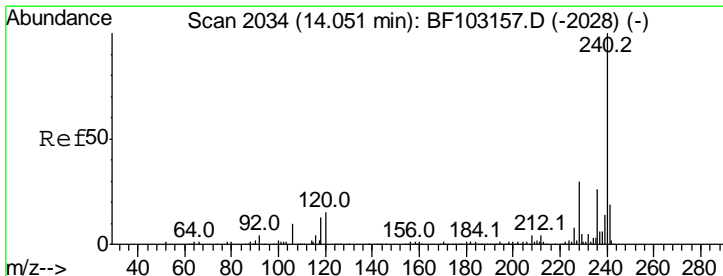
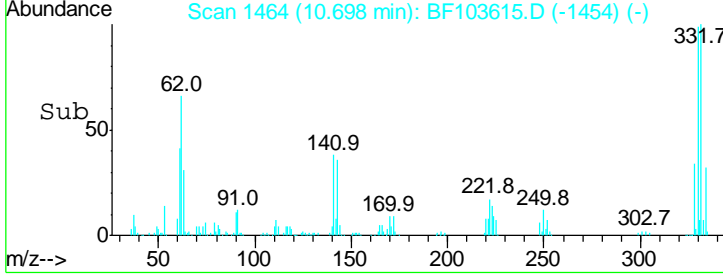
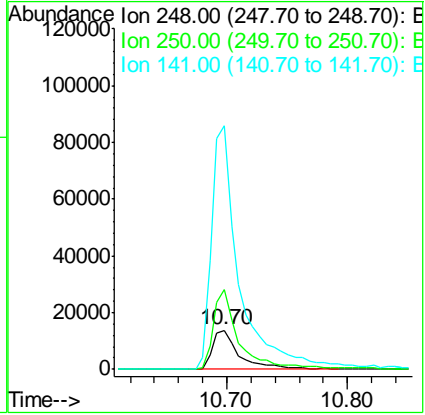
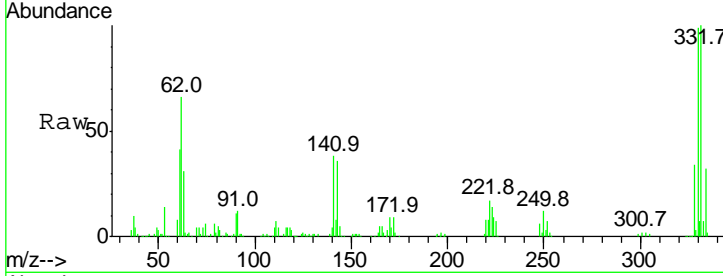




#66
 4-Bromophenyl-phenylether
 Concen: 4.166 ng
 RT: 10.70 min Scan# 1464
 Delta R.T. -0.24 min
 Lab File: BF103615.D
 Acq: 13 Mar 2018 20:09

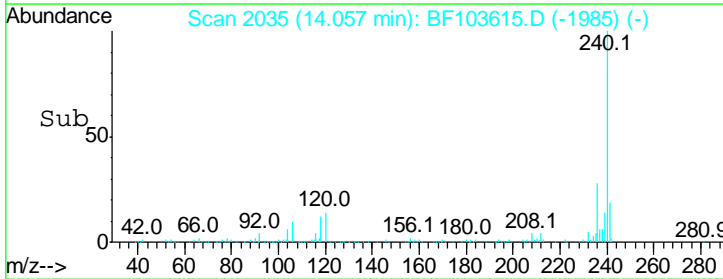
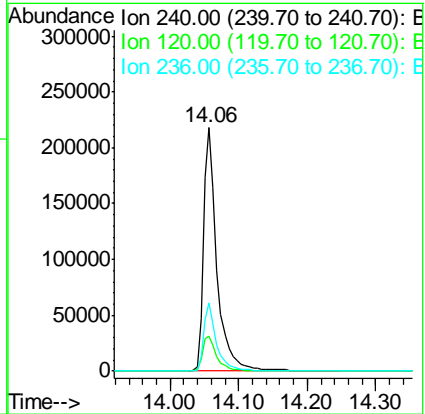
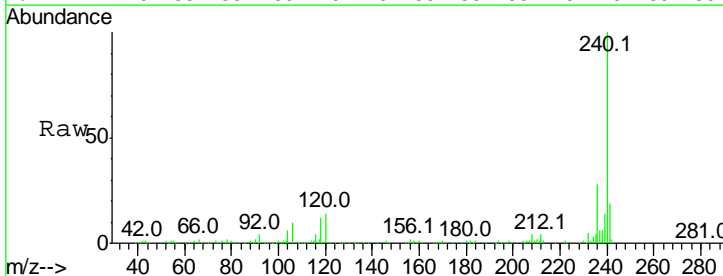
Instrument :
 BNA_F
 ClientSampled :

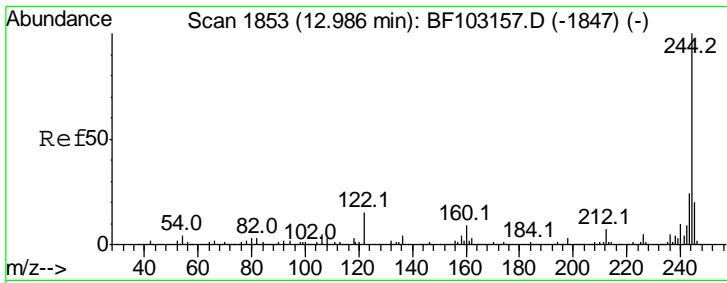
Tgt Ion	Resp	Lower	Upper
248	100		
250	204.3	76.9	115.3#
141	621.3	74.4	111.6#



#75
 Chrysene-d12
 Concen: 20.000 ng
 RT: 14.06 min Scan# 2035
 Delta R.T. -0.01 min
 Lab File: BF103615.D
 Acq: 13 Mar 2018 20:09

Tgt Ion	Resp	Lower	Upper
240	100		
120	14.1	9.5	14.3
236	27.9	20.7	31.1



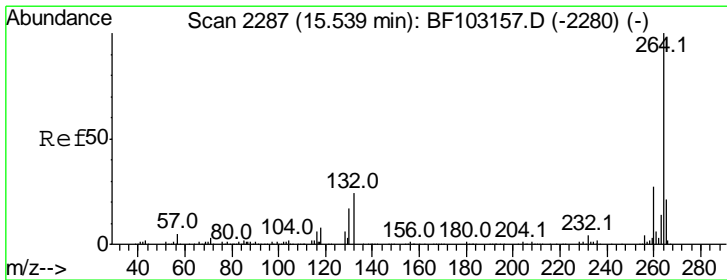
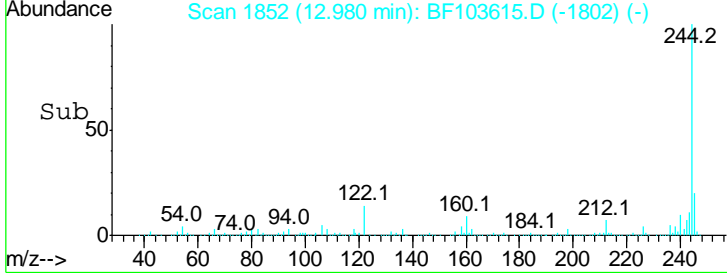
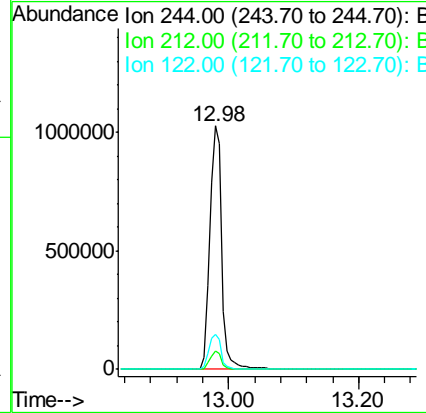
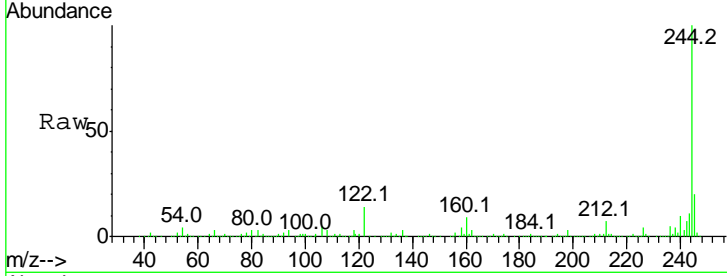


#78
 Terphenyl-d14
 Concen: 103.169 ng
 RT: 12.98 min Scan# 1852
 Delta R.T. -0.01 min
 Lab File: BF103615.D
 Acq: 13 Mar 2018 20:09

Instrument :
 BNA_F
 ClientSampled :

Tgt Ion: 244 Resp: 1300348

Ion	Ratio	Lower	Upper
244	100		
212	7.3	5.4	8.0
122	14.4	11.0	16.4



#86
 Perylene-d12
 Concen: 20.000 ng
 RT: 15.57 min Scan# 2292
 Delta R.T. 0.00 min
 Lab File: BF103615.D
 Acq: 13 Mar 2018 20:09

Tgt Ion: 264 Resp: 238717

Ion	Ratio	Lower	Upper
264	100		
260	24.1	19.2	28.8
265	21.7	17.5	26.3

