

Data Path : Z:\HPCHEM1\BNA F\DATA\BF031318\
 Data File : BF103620.D
 Acq On : 13 Mar 2018 22:22
 Operator : SJ/JU
 Sample : PB107300BL
 Misc :
 ALS Vial : 25 Sample Multiplier: 1

Instrument :
 BNA_F
 ClientSampleId :

Quant Time: Mar 14 00:55:38 2018
 Quant Method : Z:\HPCHEM1\BNA F\METHODS\8270-BF022218.M
 Quant Title : ASP BNA STANDARDS FOR 5 POINT CALIBRATION
 QLast Update : Fri Mar 09 11:47:13 2018
 Response via : Initial Calibration

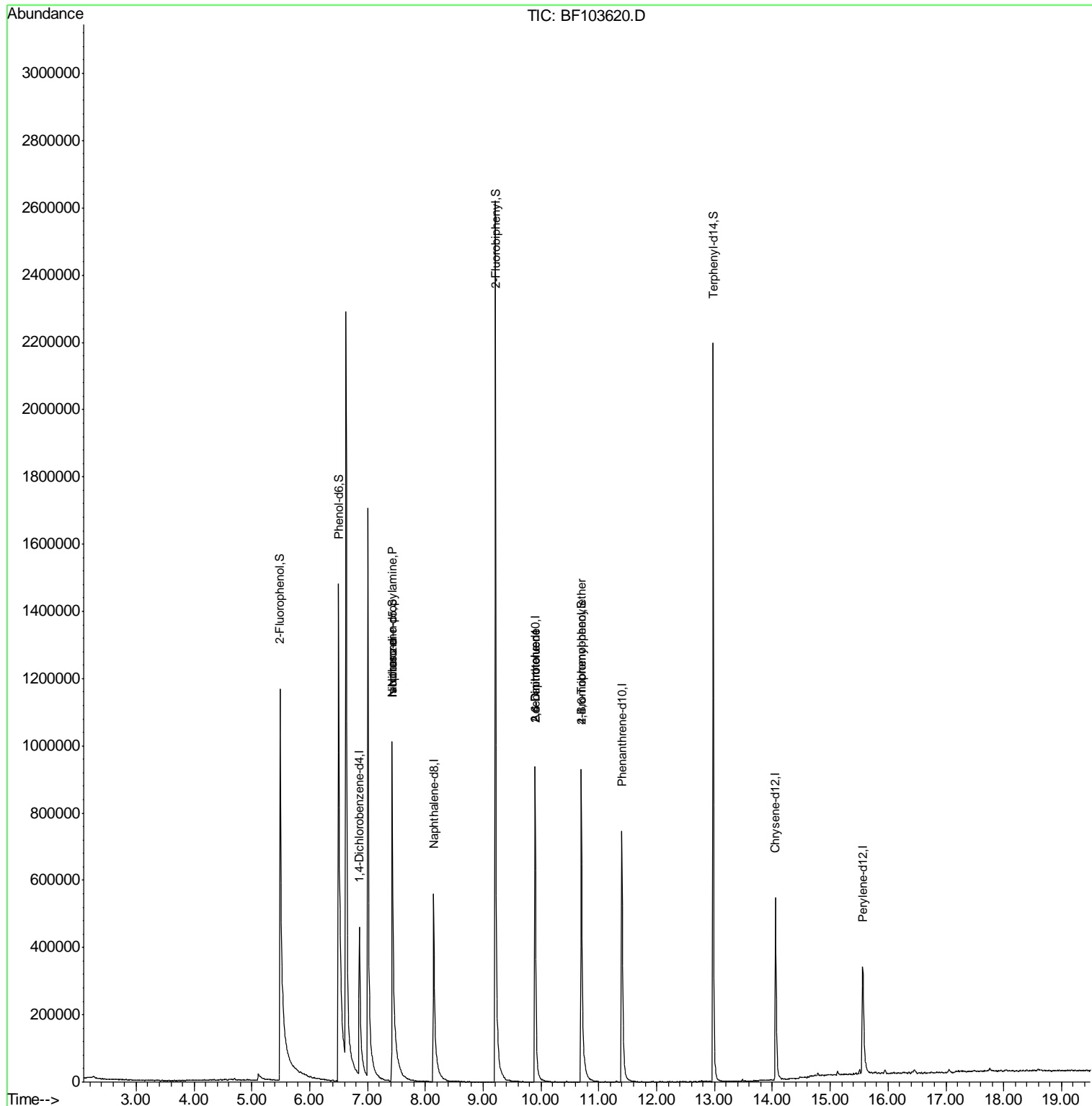
Internal Standards	R.T.	QIon	Response	Conc	Units	Dev(Min)
1) 1,4-Dichlorobenzene-d4	6.86	152	135941	20.00	ng	0.00
21) Naphthalene-d8	8.14	136	603204	20.00	ng	-0.01
38) Acenaphthene-d10	9.90	164	272624	20.00	ng	-0.01
63) Phenanthrene-d10	11.40	188	476262	20.00	ng	0.00
75) Chrysene-d12	14.06	240	267051	20.00	ng	0.00
86) Perylene-d12	15.56	264	238560	20.00	ng	0.00
System Monitoring Compounds						
5) 2-Fluorophenol	5.49	112	866280	96.38	ng	0.00
7) Phenol-d6	6.50	99	1139796	103.63	ng	-0.01
23) Nitrobenzene-d5	7.43	82	722214	68.38	ng	-0.01
41) 2,4,6-Tribromophenol	10.70	330	166212	72.03	ng	0.00
44) 2-Fluorobiphenyl	9.21	172	1156904	70.08	ng	-0.01
78) Terphenyl-d14	12.98	244	868276	78.16	ng	0.00
Target Compounds						
9) Benzaldehyde	6.50	77	1234	Below Cal		Qvalue # 1
19) n-Nitroso-di-n-propylamine	7.43	70	91117	13.311	ng	# 82
25) Isophorone	7.43	82	722214	34.717	ng	# 64
50) 2,6-Dinitrotoluene	9.90	165	33440	7.286	ng	# 26
56) 2,4-Dinitrotoluene	9.90	165	34632	5.966	ng	# 23
66) 4-Bromophenyl-phenylether	10.70	248	11504	2.319	ng	# 1

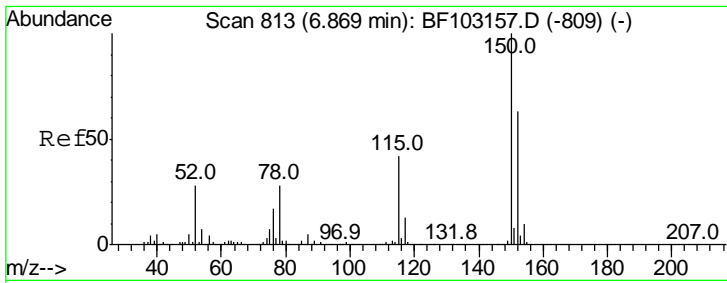
(#) = qualifier out of range (m) = manual integration (+) = signals summed

Data Path : Z:\HPCHEM1\BNA F\DATA\BF031318\
 Data File : BF103620.D
 Acq On : 13 Mar 2018 22:22
 Operator : SJ/JU
 Sample : PB107300BL
 Misc :
 ALS Vial : 25 Sample Multiplier: 1

Instrument :
 BNA_F
 ClientSampled :

Quant Time: Mar 14 00:55:38 2018
 Quant Method : Z:\HPCHEM1\BNA F\METHODS\8270-BF022218.M
 Quant Title : ASP BNA STANDARDS FOR 5 POINT CALIBRATION
 QLast Update : Fri Mar 09 11:47:13 2018
 Response via : Initial Calibration

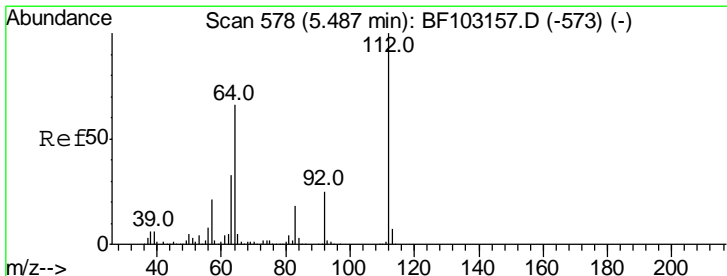
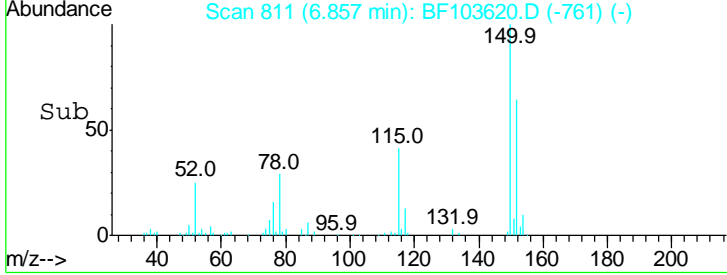
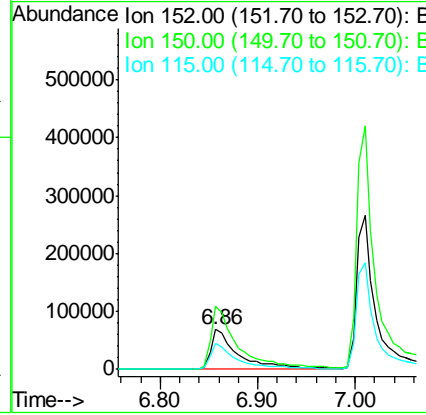
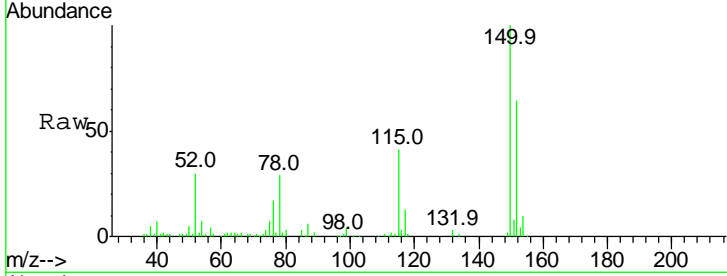




#1
 1,4-Dichlorobenzene-d4
 Concen: 20.000 ng
 RT: 6.86 min Scan# 811
 Delta R.T. -0.01 min
 Lab File: BF103620.D
 Acq: 13 Mar 2018 22:22

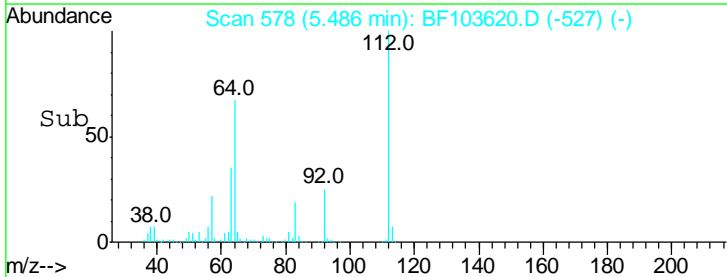
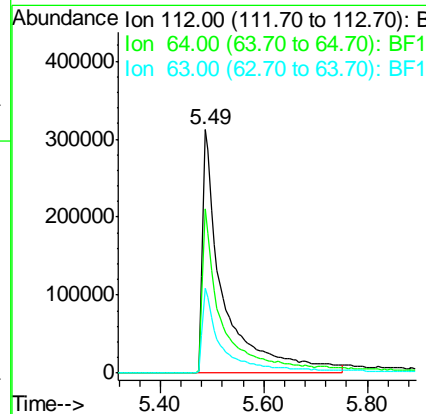
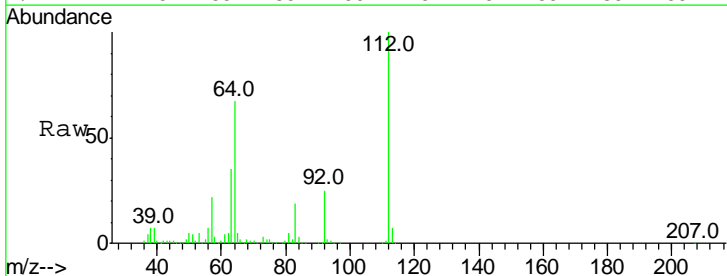
Instrument :
 BNA_F
 ClientSampled :

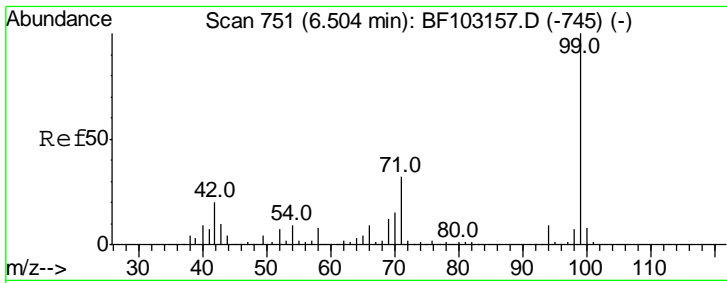
Tgt Ion	Resp	Lower	Upper
152	135941		
152	100		
150	156.7	124.6	186.8
115	64.3	50.1	75.1



#5
 2-Fluorophenol
 Concen: 96.379 ng
 RT: 5.49 min Scan# 578
 Delta R.T. -0.00 min
 Lab File: BF103620.D
 Acq: 13 Mar 2018 22:22

Tgt Ion	Resp	Lower	Upper
112	866280		
112	100		
64	67.2	47.9	71.9
63	34.9	23.7	35.5

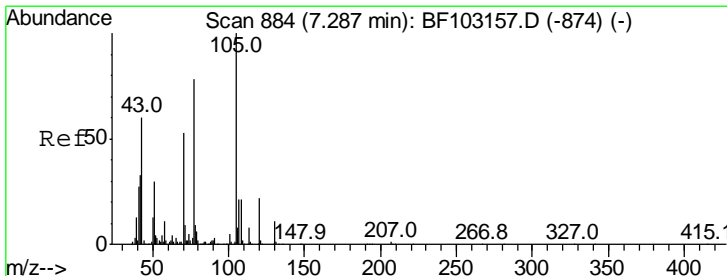
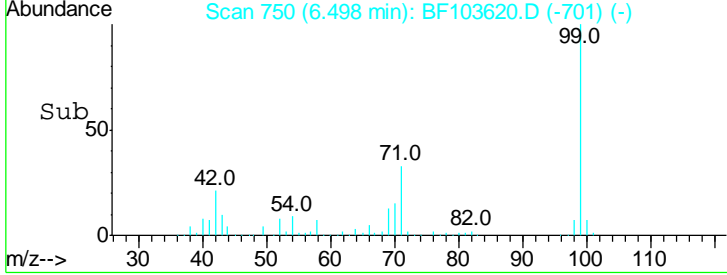
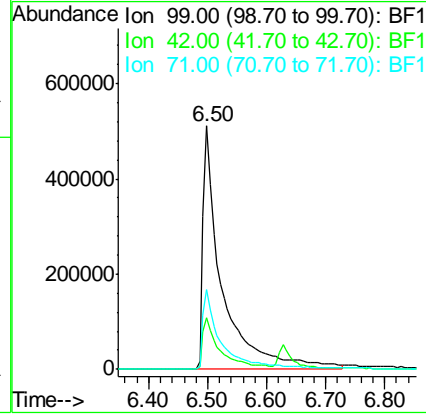
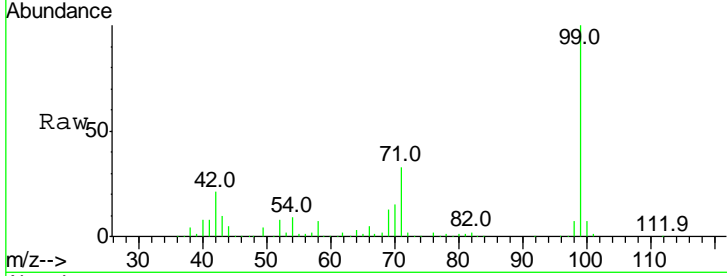




#7
 Phenol-d6
 Concen: 103.632 ng
 RT: 6.50 min Scan# 750
 Delta R.T. -0.01 min
 Lab File: BF103620.D
 Acq: 13 Mar 2018 22:22

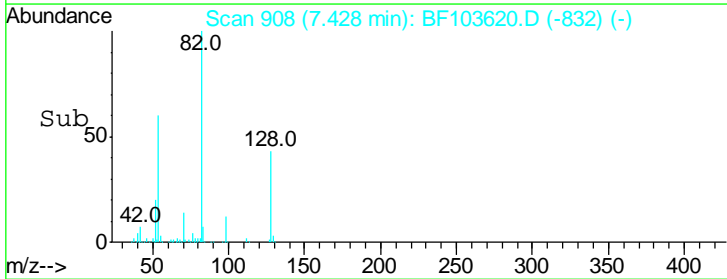
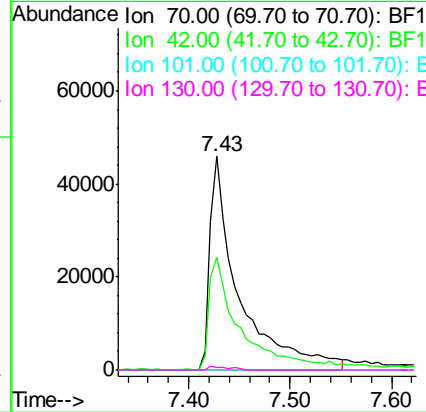
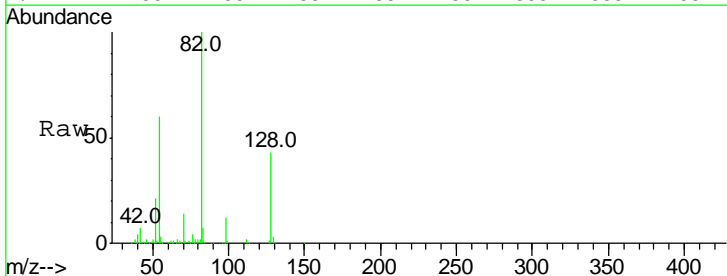
Instrument :
 BNA_F
 ClientSampled :

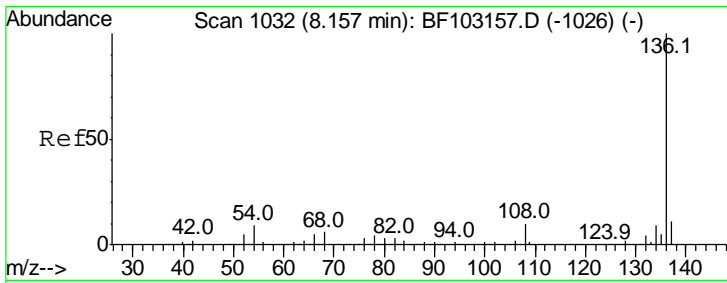
Tgt Ion	Resp	Lower	Upper
99	1139796		
99	100		
42	21.2	14.5	21.7
71	32.7	25.4	38.0



#19
 n-Nitroso-di-n-propylamine
 Concen: 13.311 ng
 RT: 7.43 min Scan# 908
 Delta R.T. 0.15 min
 Lab File: BF103620.D
 Acq: 13 Mar 2018 22:22

Tgt Ion	Resp	Lower	Upper
70	91117		
70	100		
42	52.6	47.5	71.3
101	0.0	7.4	11.2#
130	1.5	16.6	25.0#



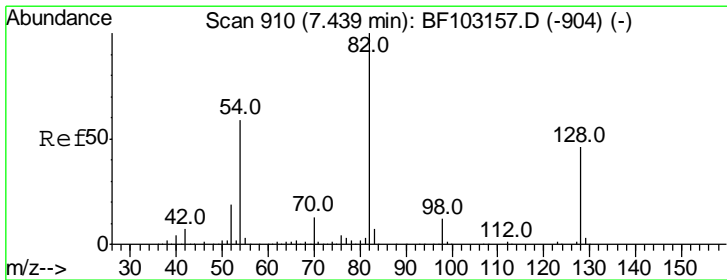
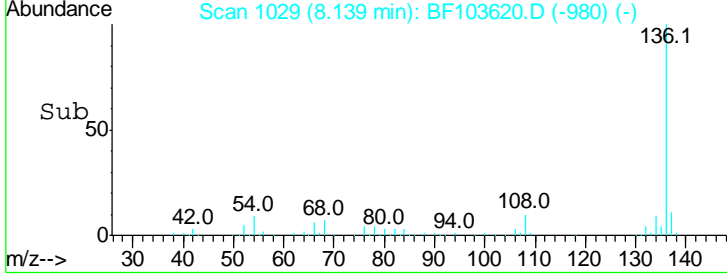
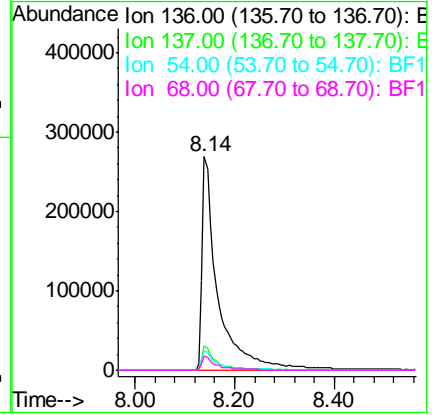
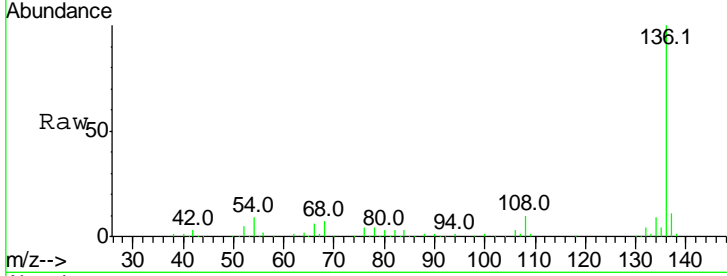


#21
 Naphthalene-d8
 Concen: 20.000 ng
 RT: 8.14 min Scan# 1029
 Delta R.T. -0.01 min
 Lab File: BF103620.D
 Acq: 13 Mar 2018 22:22

Instrument :
 BNA_F
 ClientSampled :

Tgt Ion: 136 Resp: 603204

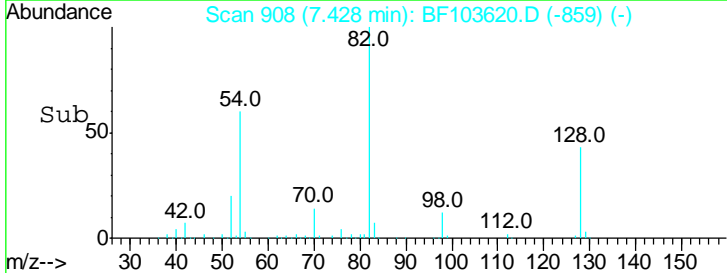
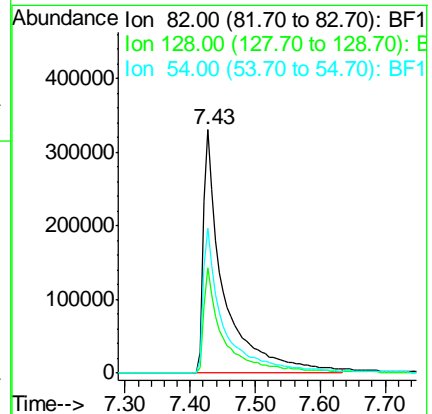
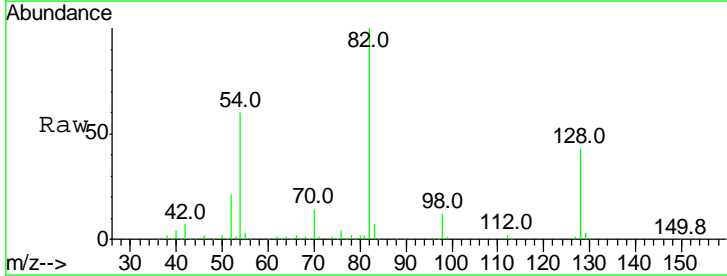
Ion	Ratio	Lower	Upper
136	100		
137	11.3	8.9	13.3
54	9.2	6.6	9.8
68	6.7	5.0	7.4

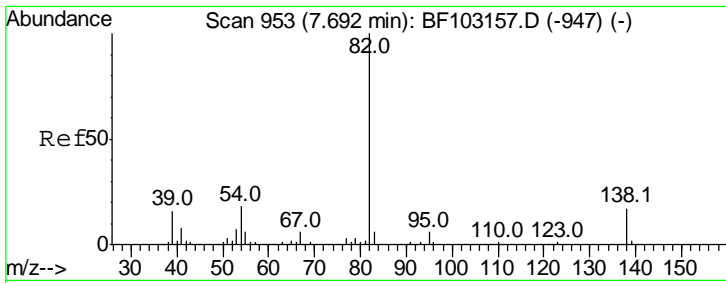


#23
 Nitrobenzene-d5
 Concen: 68.376 ng
 RT: 7.43 min Scan# 908
 Delta R.T. -0.01 min
 Lab File: BF103620.D
 Acq: 13 Mar 2018 22:22

Tgt Ion: 82 Resp: 722214

Ion	Ratio	Lower	Upper
82	100		
128	43.4	36.1	54.1
54	59.8	41.4	62.2

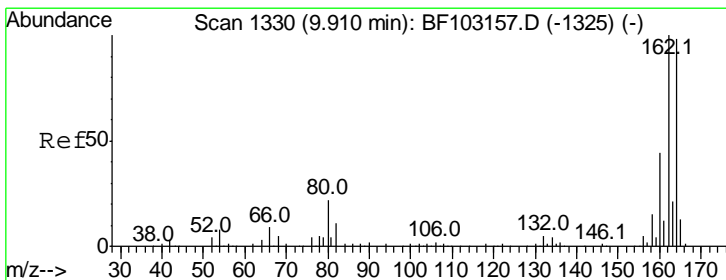
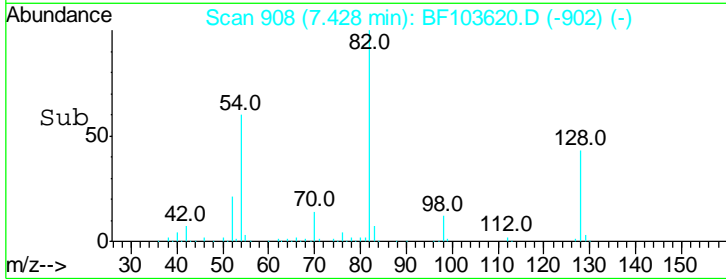
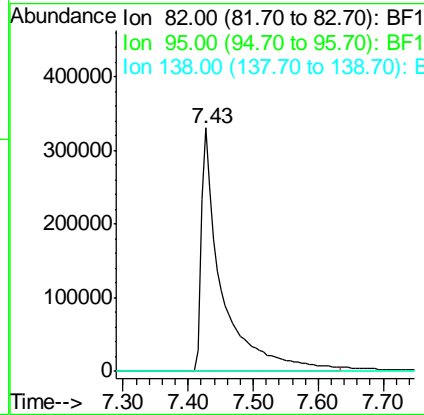
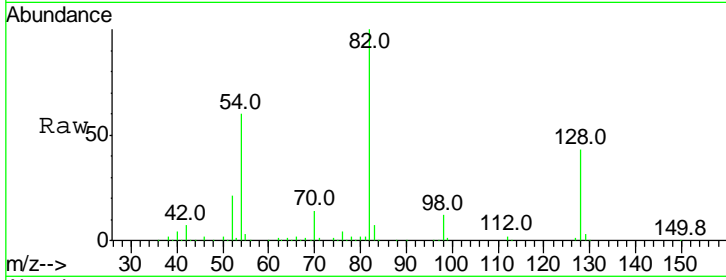




#25
 Isophorone
 Concen: 34.717 ng
 RT: 7.43 min Scan# 908
 Delta R.T. -0.26 min
 Lab File: BF103620.D
 Acq: 13 Mar 2018 22:22

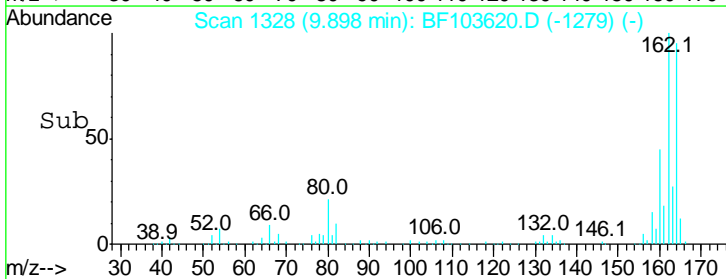
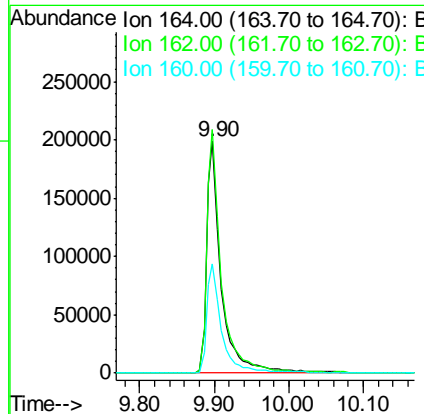
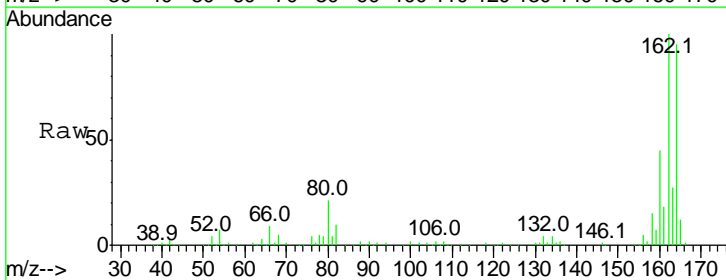
Instrument :
 BNA_F
 ClientSampleID :

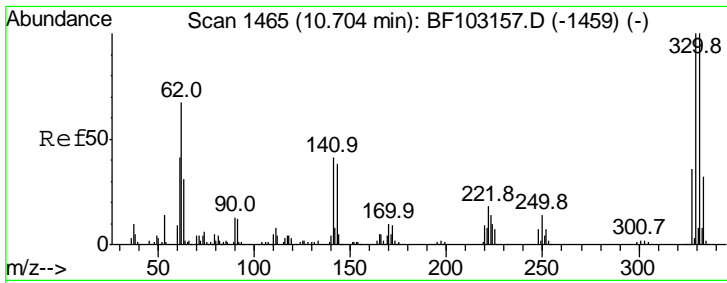
Tgt Ion	Resp	Lower	Upper
82	100		
95	0.0	5.2	7.8#
138	0.0	14.9	22.3#



#38
 Acenaphthene-d10
 Concen: 20.000 ng
 RT: 9.90 min Scan# 1328
 Delta R.T. -0.01 min
 Lab File: BF103620.D
 Acq: 13 Mar 2018 22:22

Tgt Ion	Resp	Lower	Upper
164	100		
162	105.0	86.1	129.1
160	47.1	38.3	57.5

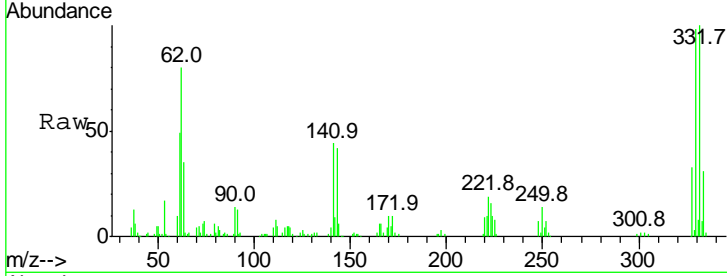




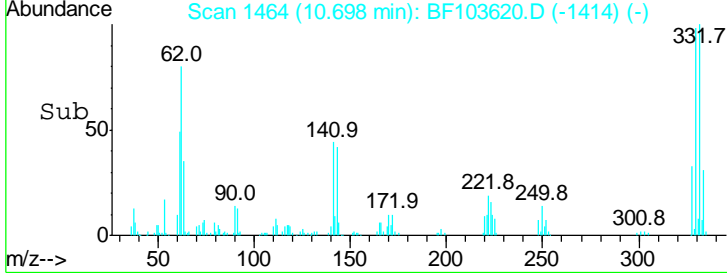
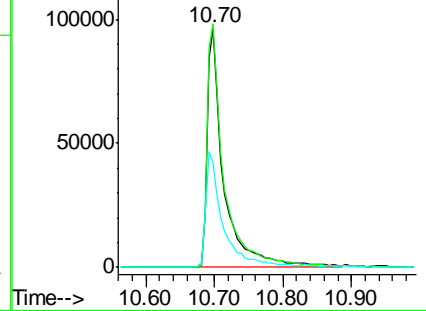
#41
 2,4,6-Tribromophenol
 Concen: 72.028 ng
 RT: 10.70 min Scan# 1464
 Delta R.T. -0.01 min
 Lab File: BF103620.D
 Acq: 13 Mar 2018 22:22

Instrument :
 BNA_F
 ClientSampled :

Tgt Ion	Resp	Lower	Upper
330	100		
332	101.8	77.0	115.6
141	50.9	29.9	44.9#

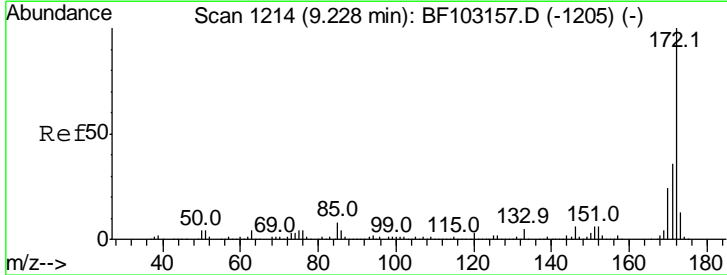


Abundance Ion 329.80 (329.50 to 330.50): E
 Ion 331.80 (331.50 to 332.50): E
 Ion 141.00 (140.70 to 141.70): E

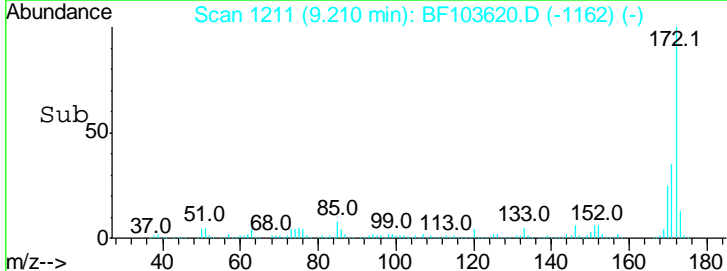
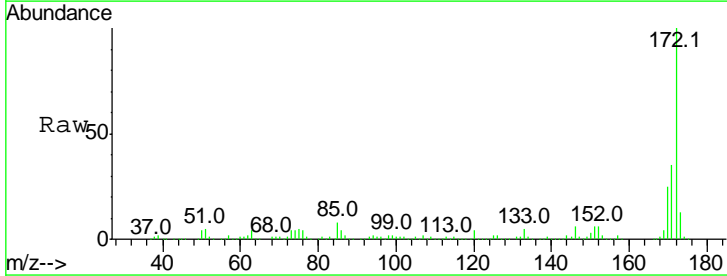
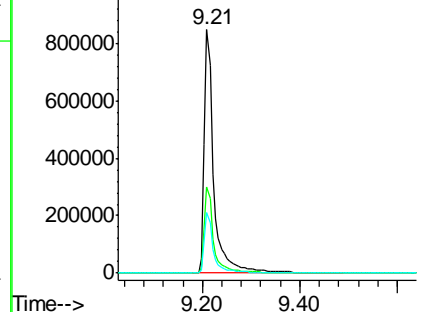


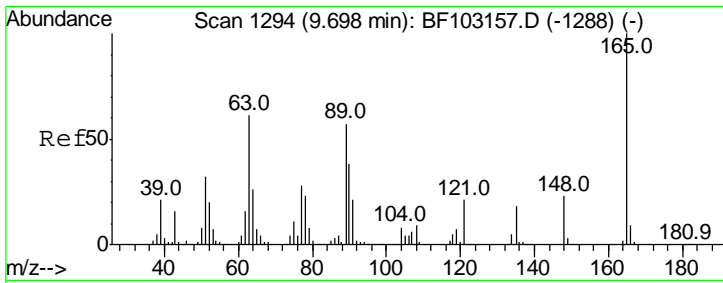
#44
 2-Fluorobiphenyl
 Concen: 70.076 ng
 RT: 9.21 min Scan# 1211
 Delta R.T. -0.01 min
 Lab File: BF103620.D
 Acq: 13 Mar 2018 22:22

Tgt Ion	Resp	Lower	Upper
172	100		
171	35.5	29.7	44.5
170	24.8	19.6	29.4



Abundance Ion 172.00 (171.70 to 172.70): E
 Ion 171.00 (170.70 to 171.70): E
 Ion 170.00 (169.70 to 170.70): E

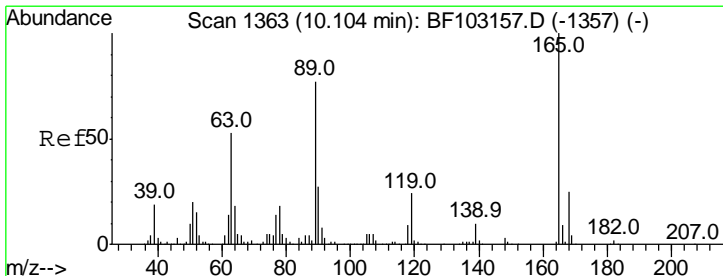
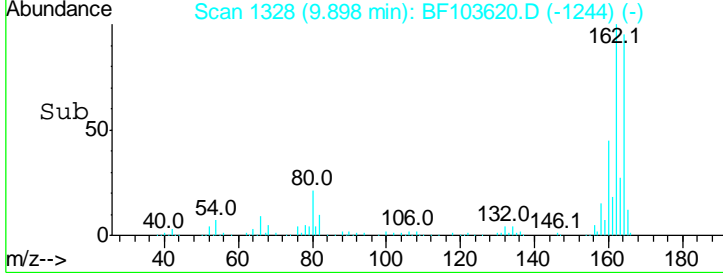
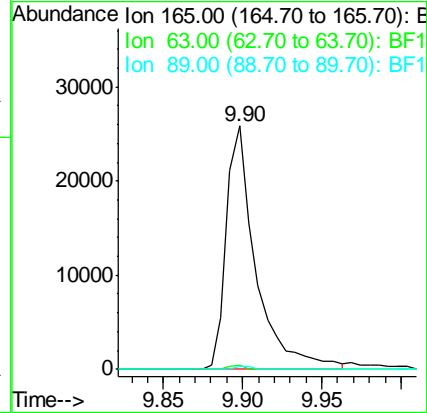
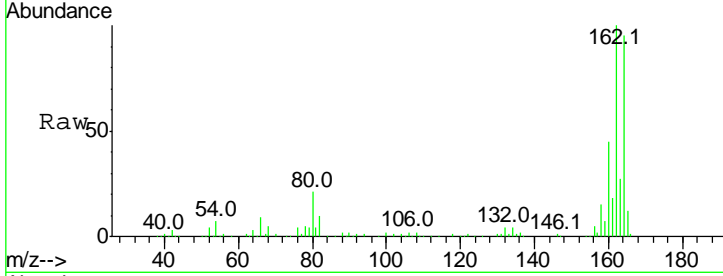




#50
 2,6-Dinitrotoluene
 Concen: 7.286 ng
 RT: 9.90 min Scan# 1328
 Delta R.T. 0.19 min
 Lab File: BF103620.D
 Acq: 13 Mar 2018 22:22

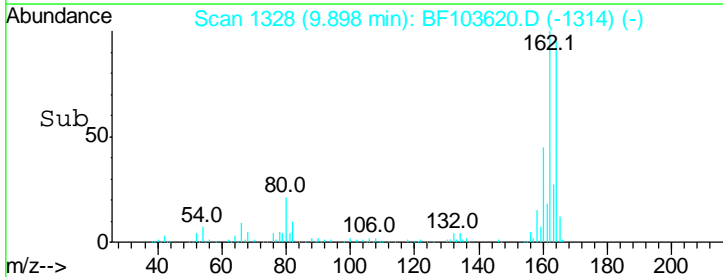
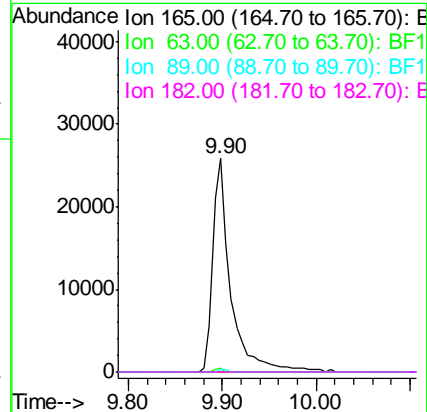
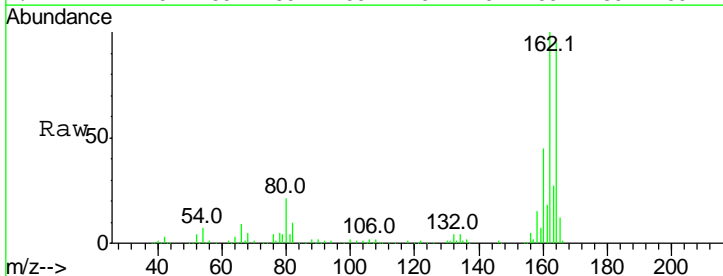
Instrument :
 BNA_F
 ClientSampled :

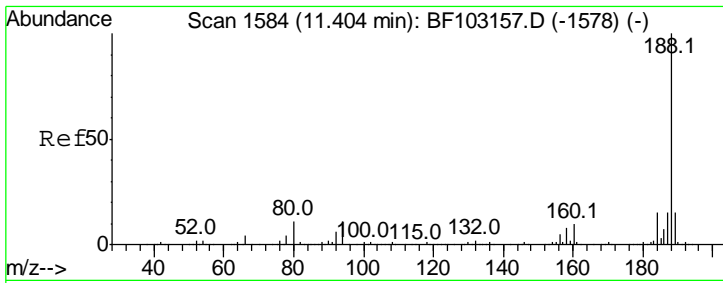
Tgt Ion	Resp	Lower	Upper
165	100		
63	1.7	44.7	67.1#
89	1.4	44.0	66.0#



#56
 2,4-Dinitrotoluene
 Concen: 5.966 ng
 RT: 9.90 min Scan# 1328
 Delta R.T. -0.22 min
 Lab File: BF103620.D
 Acq: 13 Mar 2018 22:22

Tgt Ion	Resp	Lower	Upper
165	100		
63	1.7	36.4	54.6#
89	1.4	57.8	86.6#
182	0.0	1.6	2.4#

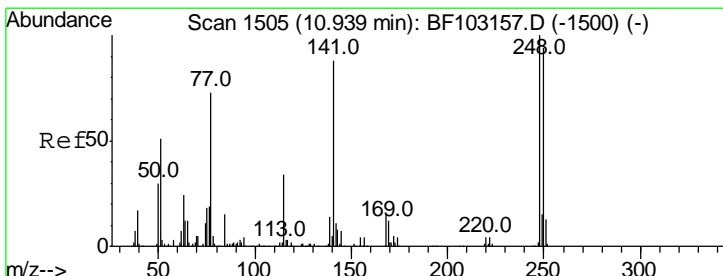
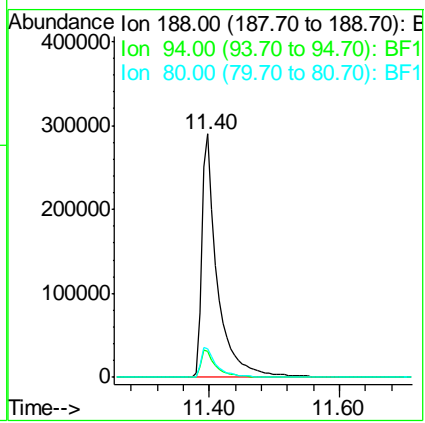
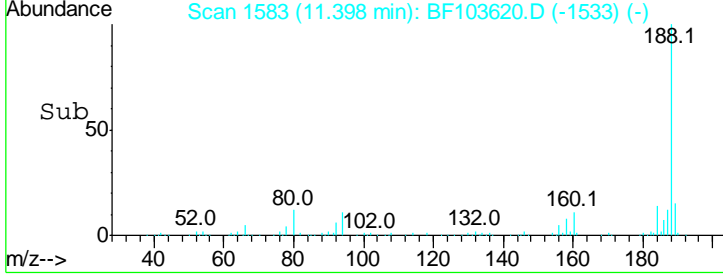
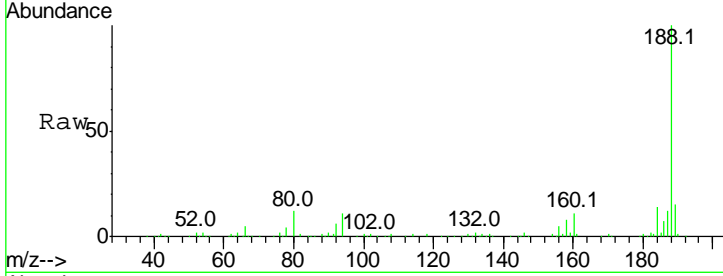




#63
 Phenanthrene-d10
 Concen: 20.000 ng
 RT: 11.40 min Scan# 1583
 Delta R.T. -0.01 min
 Lab File: BF103620.D
 Acq: 13 Mar 2018 22:22

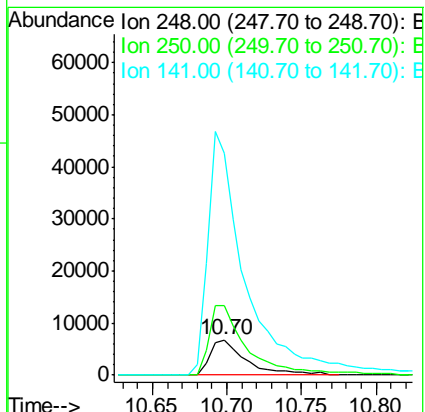
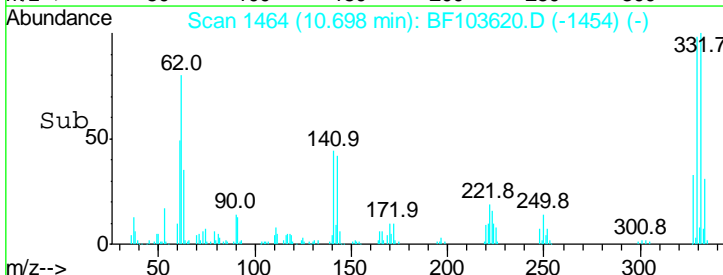
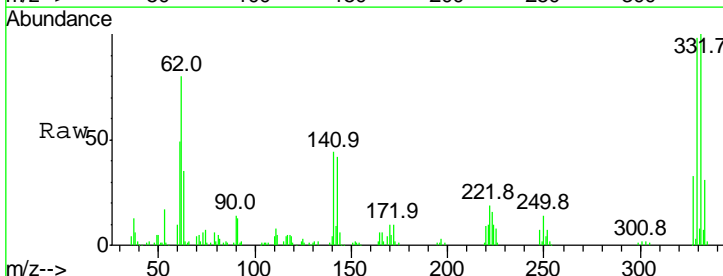
Instrument :
 BNA_F
 ClientSampled :

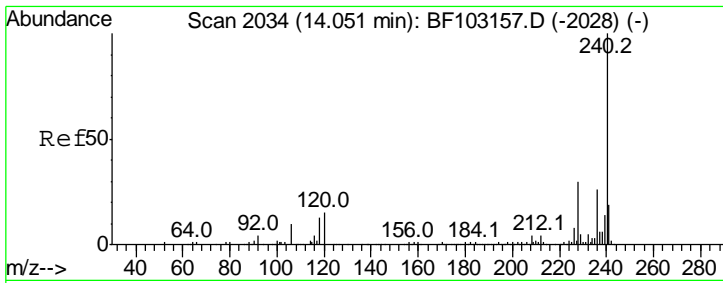
Tgt Ion	Resp	Lower	Upper
188	100		
94	10.8	8.5	12.7
80	11.7	9.2	13.8



#66
 4-Bromophenyl-phenylether
 Concen: 2.319 ng
 RT: 10.70 min Scan# 1464
 Delta R.T. -0.24 min
 Lab File: BF103620.D
 Acq: 13 Mar 2018 22:22

Tgt Ion	Resp	Lower	Upper
248	100		
250	198.9	76.9	115.3#
141	632.7	74.4	111.6#

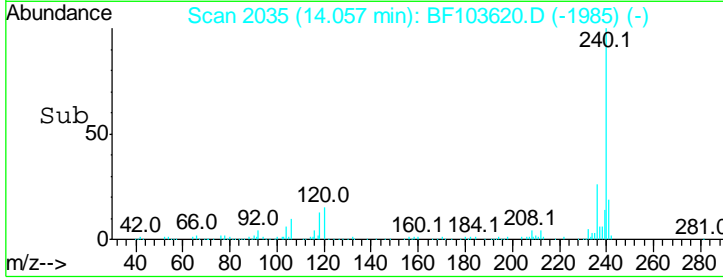
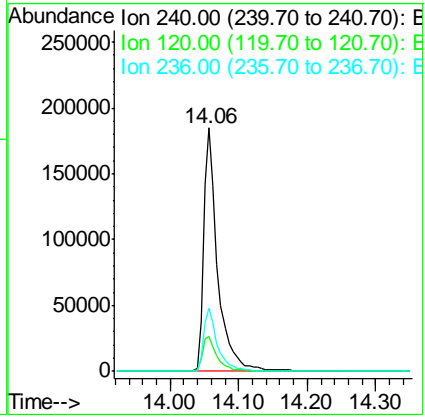
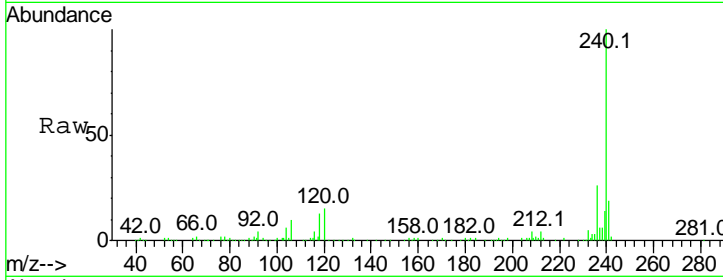




#75
 Chrysene-d12
 Concen: 20.000 ng
 RT: 14.06 min Scan# 2035
 Delta R.T. -0.01 min
 Lab File: BF103620.D
 Acq: 13 Mar 2018 22:22

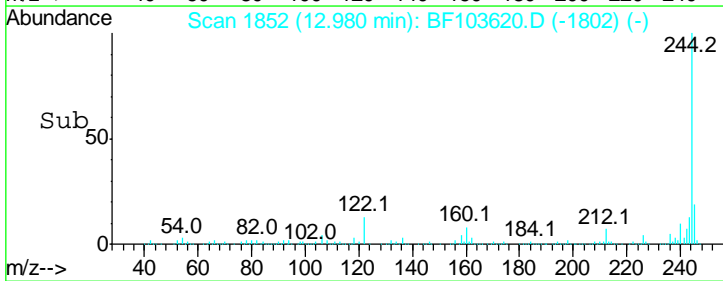
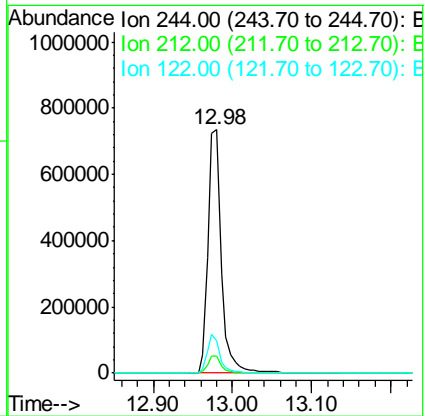
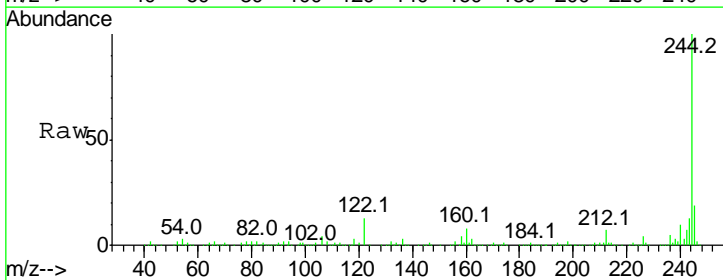
Instrument :
 BNA_F
 ClientSampled :

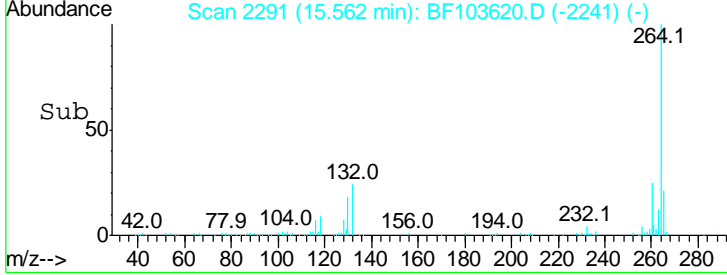
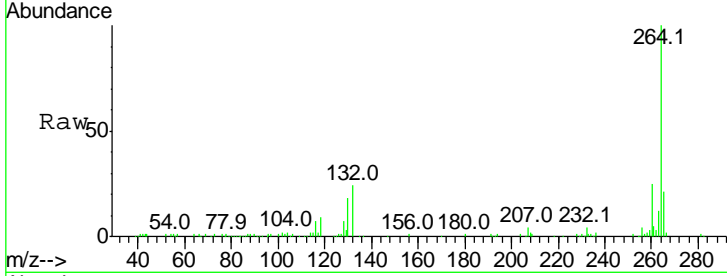
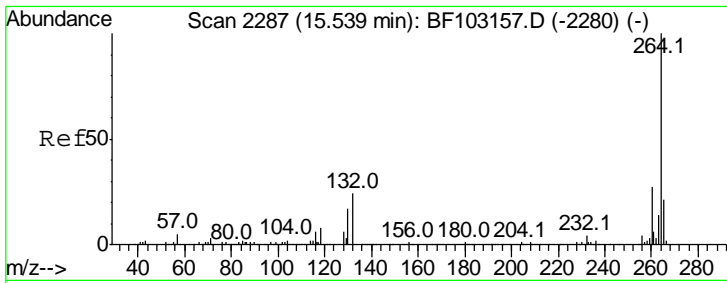
Tgt Ion	Resp	Lower	Upper
240	267051		
120	14.5	9.5	14.3#
236	25.8	20.7	31.1



#78
 Terphenyl-d14
 Concen: 78.158 ng
 RT: 12.98 min Scan# 1852
 Delta R.T. -0.01 min
 Lab File: BF103620.D
 Acq: 13 Mar 2018 22:22

Tgt Ion	Resp	Lower	Upper
244	868276		
212	6.8	5.4	8.0
122	13.4	11.0	16.4





#86
 Perylene-d12
 Concen: 20.000 ng
 RT: 15.56 min Scan# 2291
 Delta R.T. -0.01 min
 Lab File: BF103620.D
 Acq: 13 Mar 2018 22:22

Instrument :
 BNA_F
 ClientSampled :

Tot Ion: 264 Resp: 238560

Ion	Ratio	Lower	Upper
264	100		
260	24.9	19.2	28.8
265	21.2	17.5	26.3

