

Data Path : Z:\SVOASRV\HPCHEM1\BNA F\DATA\BF031319\  
 Data File : BF113036.D  
 Acq On : 13 Mar 2019 18:54  
 Operator : JU/SJ  
 Sample : K1844-09  
 Misc :  
 ALS Vial : 6 Sample Multiplier: 1

Instrument :  
 BNA\_F  
 ClientSampleId :

Quant Time: Mar 14 02:02:08 2019  
 Quant Method : Z:\SVOASRV\HPCHEM1\BNA F\METHODS\8270-BF022719.M  
 Quant Title : ASP BNA STANDARDS FOR 5 POINT CALIBRATION  
 QLast Update : Wed Mar 13 03:42:55 2019  
 Response via : Initial Calibration

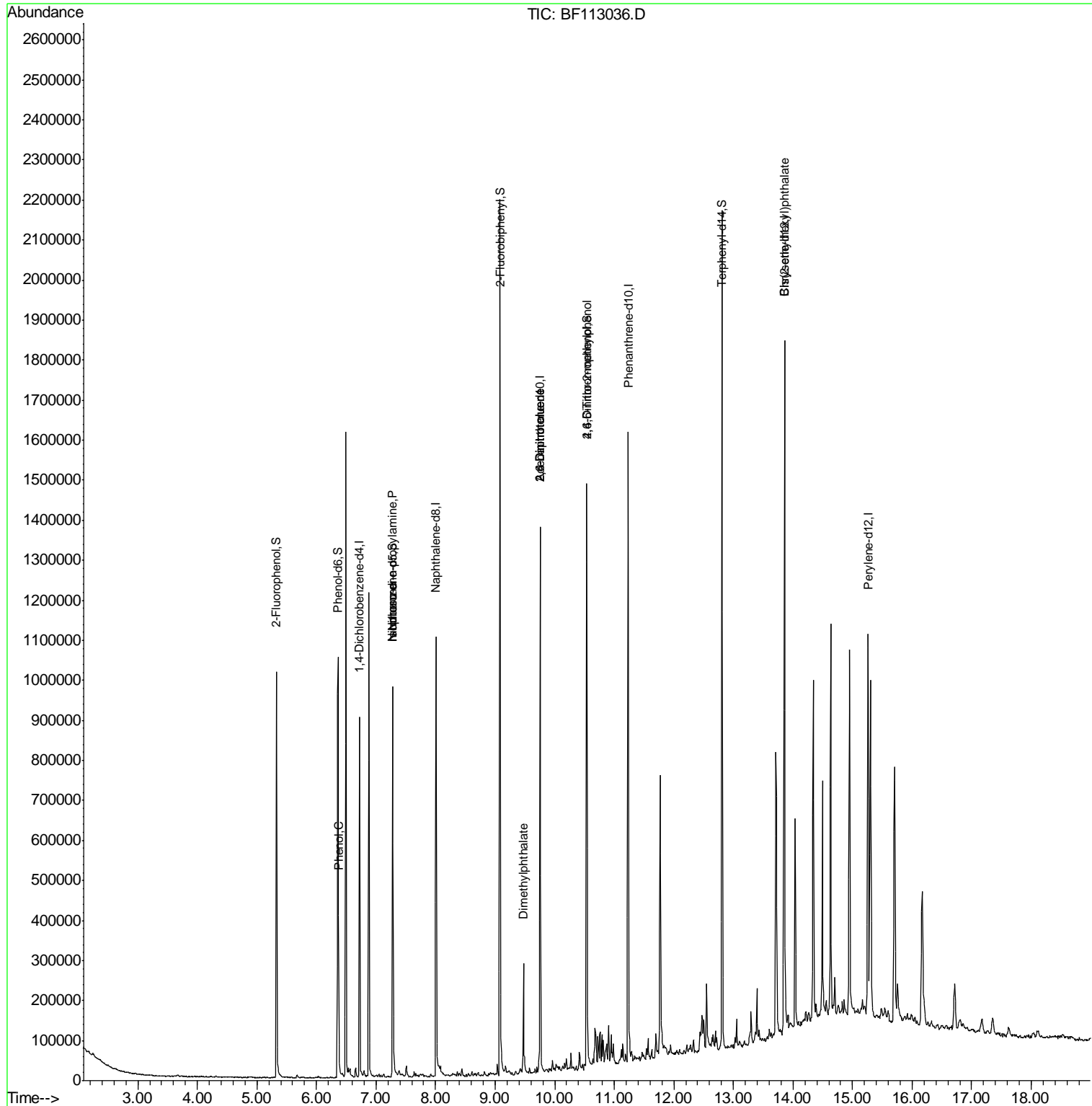
| Internal Standards             | R.T.  | QIon | Response | Conc   | Units | Dev(Min) |
|--------------------------------|-------|------|----------|--------|-------|----------|
| 1) 1,4-Dichlorobenzene-d4      | 6.72  | 152  | 140583   | 20.00  | ng    | -0.01    |
| 21) Naphthalene-d8             | 8.00  | 136  | 563372   | 20.00  | ng    | -0.01    |
| 39) Acenaphthene-d10           | 9.76  | 164  | 286524   | 20.00  | ng    | -0.01    |
| 64) Phenanthrene-d10           | 11.23 | 188  | 614304   | 20.00  | ng    | -0.01    |
| 76) Chrysene-d12               | 13.86 | 240  | 527022   | 20.00  | ng    | -0.01    |
| 87) Perylene-d12               | 15.26 | 264  | 487209   | 20.00  | ng    | -0.01    |
| System Monitoring Compounds    |       |      |          |        |       |          |
| 5) 2-Fluorophenol              | 5.33  | 112  | 305010   | 33.75  | ng    | -0.02    |
| 7) Phenol-d6                   | 6.36  | 99   | 380201   | 33.49  | ng    | -0.01    |
| 23) Nitrobenzene-d5            | 7.28  | 82   | 310232   | 32.95  | ng    | -0.02    |
| 42) 2,4,6-Tribromophenol       | 10.54 | 330  | 200326   | 65.86  | ng    | -0.01    |
| 45) 2-Fluorobiphenyl           | 9.08  | 172  | 668731   | 32.63  | ng    | -0.01    |
| 79) Terphenyl-d14              | 12.81 | 244  | 685041   | 25.20  | ng    | -0.01    |
| Target Compounds               |       |      |          |        |       |          |
| 10) Phenol                     | 6.37  | 94   | 38427    | 2.901  | ng    | 88       |
| 19) n-Nitroso-di-n-propylamine | 7.28  | 70   | 40070    | 5.573  | ng    | # 75     |
| 25) Isophorone                 | 7.28  | 82   | 310228   | 15.295 | ng    | # 66     |
| 50) Dimethylphthalate          | 9.47  | 163  | 110456   | 5.228  | ng    | 98       |
| 51) 2,6-Dinitrotoluene         | 9.76  | 165  | 38027    | 8.644  | ng    | # 18     |
| 57) 2,4-Dinitrotoluene         | 9.76  | 165  | 38027    | 6.954  | ng    | # 18     |
| 65) 4,6-Dinitro-2-methylphenol | 10.54 | 198  | 281      | 4.713  | ng    | # 1      |
| 84) Bis(2-ethylhexyl)phthalate | 13.85 | 149  | 163015   | 7.087  | ng    | 99       |

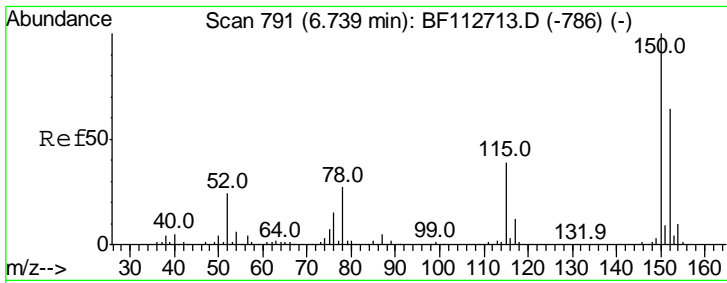
(#) = qualifier out of range (m) = manual integration (+) = signals summed

Data Path : Z:\SVOASRV\HPCHEM1\BNA F\DATA\BF031319\  
 Data File : BF113036.D  
 Acq On : 13 Mar 2019 18:54  
 Operator : JU/SJ  
 Sample : K1844-09  
 Misc :  
 ALS Vial : 6 Sample Multiplier: 1

Instrument :  
 BNA\_F  
 ClientSampled :

Quant Time: Mar 14 02:02:08 2019  
 Quant Method : Z:\SVOASRV\HPCHEM1\BNA F\METHODS\8270-BF022719.M  
 Quant Title : ASP BNA STANDARDS FOR 5 POINT CALIBRATION  
 QLast Update : Wed Mar 13 03:42:55 2019  
 Response via : Initial Calibration

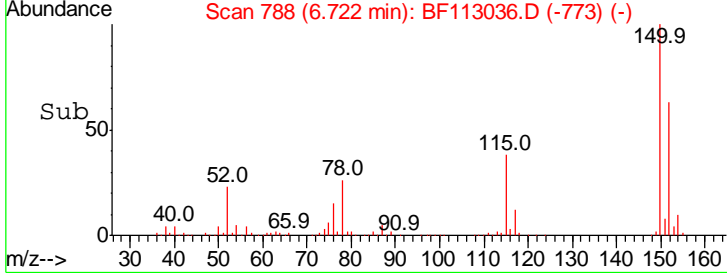
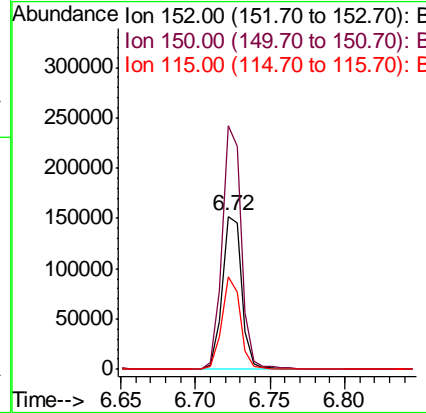
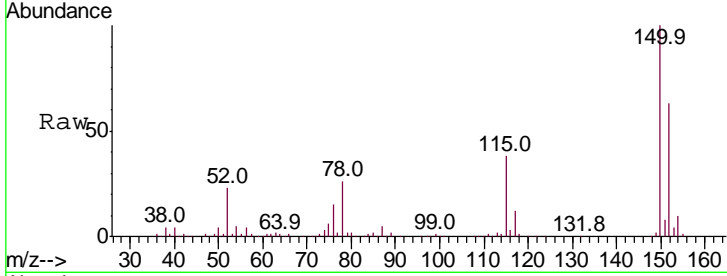




#1  
 1,4-Dichlorobenzene-d4  
 Concen: 20.000 ng  
 RT: 6.72 min Scan# 788  
 Delta R.T. -0.01 min  
 Lab File: BF113036.D  
 Acq: 13 Mar 2019 18:54

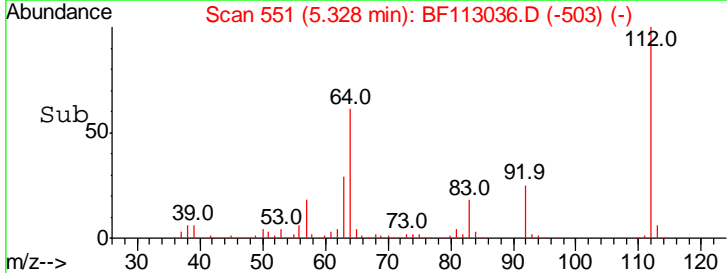
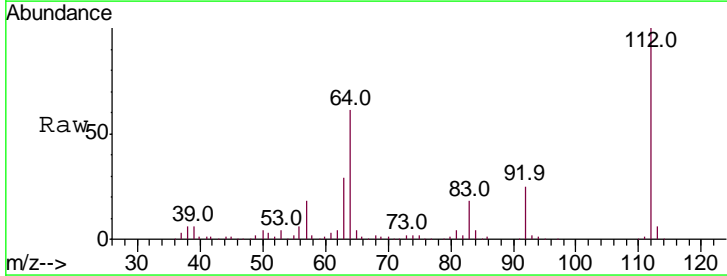
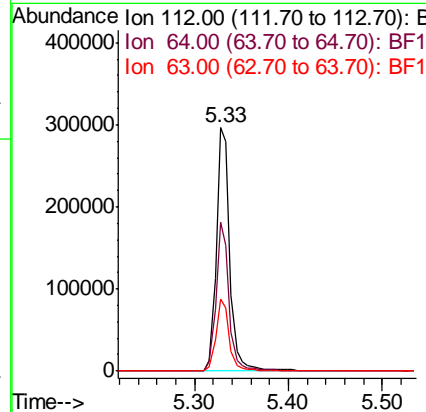
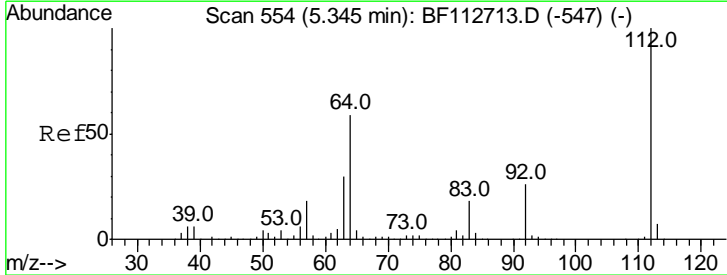
Instrument :  
 BNA\_F  
 ClientSampled :

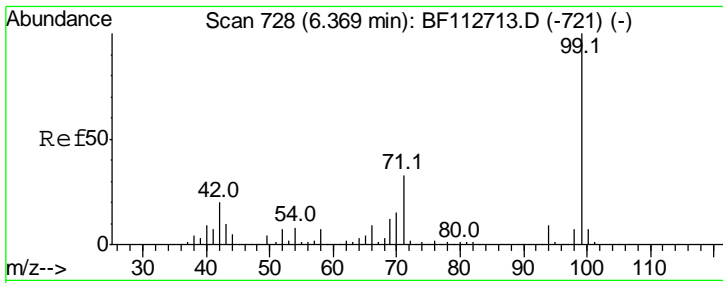
| Tgt Ion | Resp   | Lower | Upper |
|---------|--------|-------|-------|
| 152     | 140583 |       |       |
| 150     | 159.4  | 124.2 | 186.2 |
| 115     | 60.3   | 48.2  | 72.4  |



#5  
 2-Fluorophenol  
 Concen: 33.749 ng  
 RT: 5.33 min Scan# 551  
 Delta R.T. -0.02 min  
 Lab File: BF113036.D  
 Acq: 13 Mar 2019 18:54

| Tgt Ion | Resp   | Lower | Upper |
|---------|--------|-------|-------|
| 112     | 305010 |       |       |
| 64      | 61.3   | 47.6  | 71.4  |
| 63      | 29.5   | 24.4  | 36.6  |

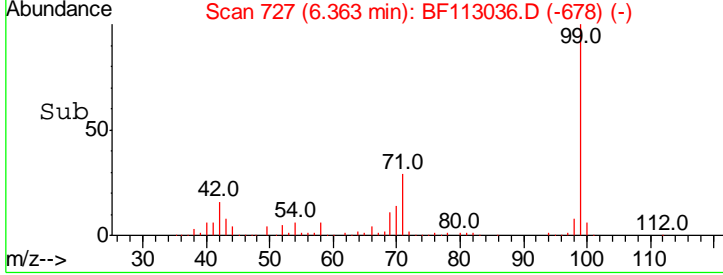
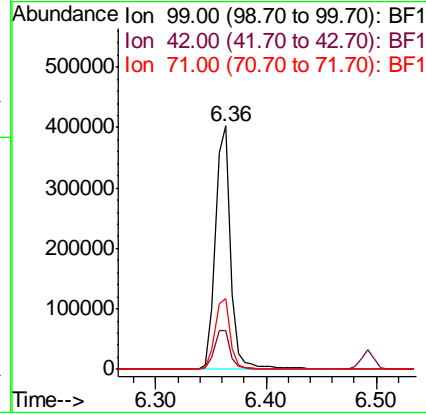
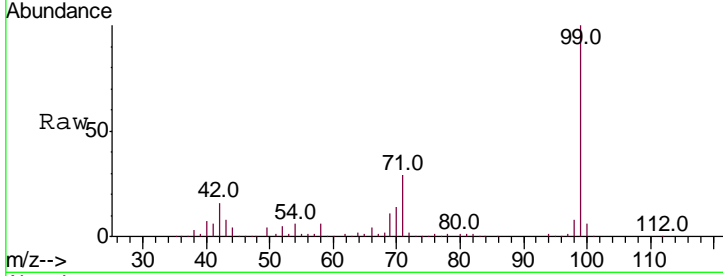




#7  
 Phenol-d6  
 Concen: 33.490 ng  
 RT: 6.36 min Scan# 727  
 Delta R.T. -0.01 min  
 Lab File: BF113036.D  
 Acq: 13 Mar 2019 18:54

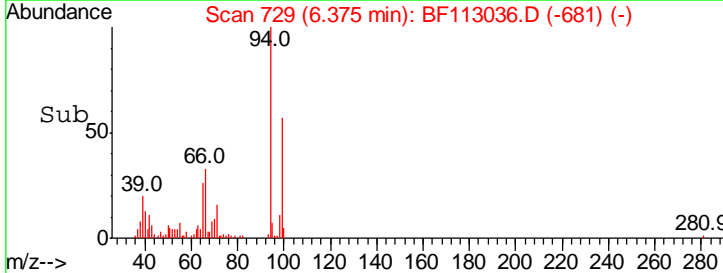
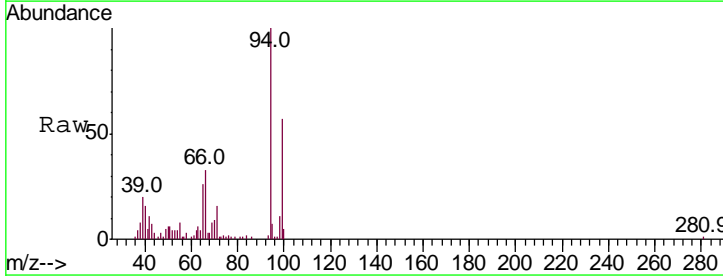
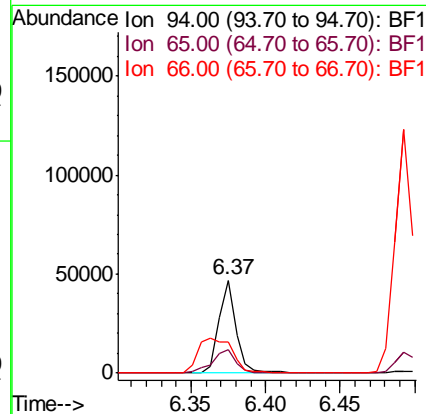
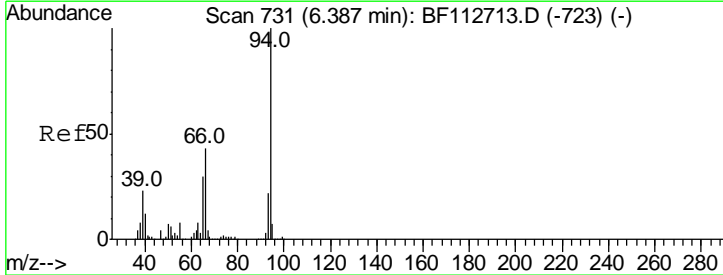
Instrument :  
 BNA\_F  
 ClientSampleId :

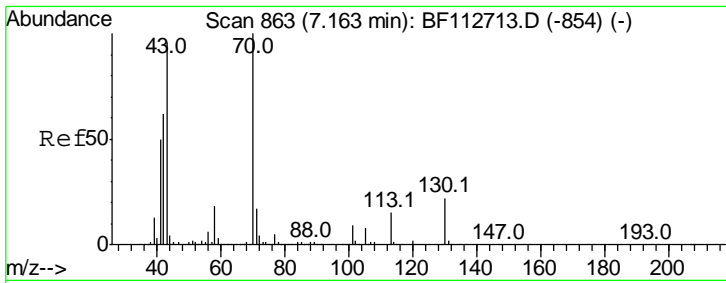
| Tgt Ion | Resp | Lower | Upper |
|---------|------|-------|-------|
| 99      | 100  |       |       |
| 42      | 16.0 | 16.3  | 24.5# |
| 71      | 29.0 | 26.2  | 39.4  |



#10  
 Phenol  
 Concen: 2.901 ng  
 RT: 6.37 min Scan# 729  
 Delta R.T. -0.02 min  
 Lab File: BF113036.D  
 Acq: 13 Mar 2019 18:54

| Tgt Ion | Resp | Lower | Upper |
|---------|------|-------|-------|
| 94      | 100  |       |       |
| 65      | 25.9 | 10.5  | 50.5  |
| 66      | 33.4 | 22.6  | 62.6  |

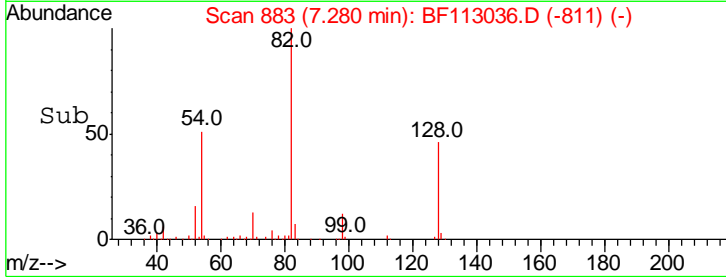
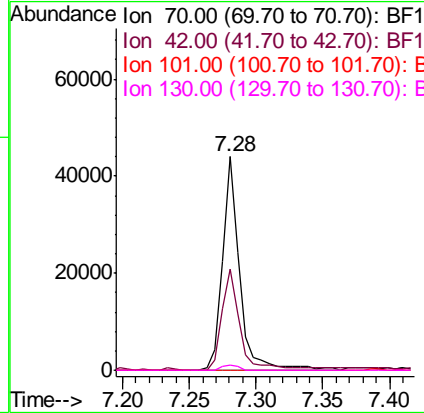
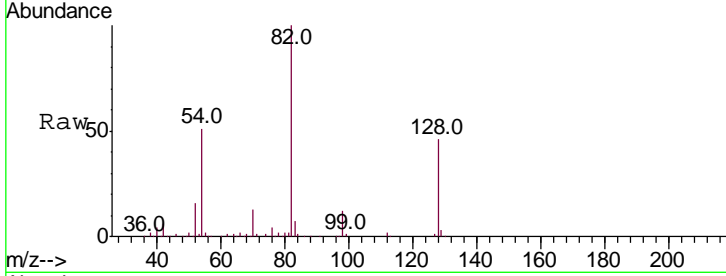




#19  
 n-Nitroso-di-n-propylamine  
 Concen: 5.573 ng  
 RT: 7.28 min Scan# 883  
 Delta R.T. 0.12 min  
 Lab File: BF113036.D  
 Acq: 13 Mar 2019 18:54

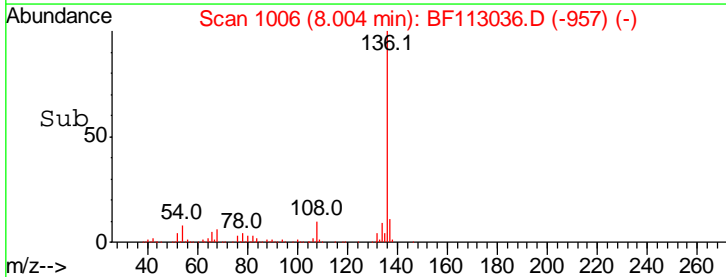
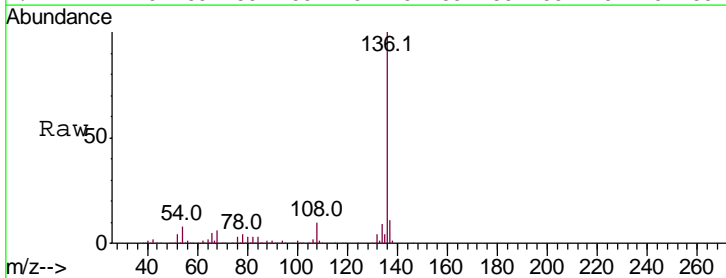
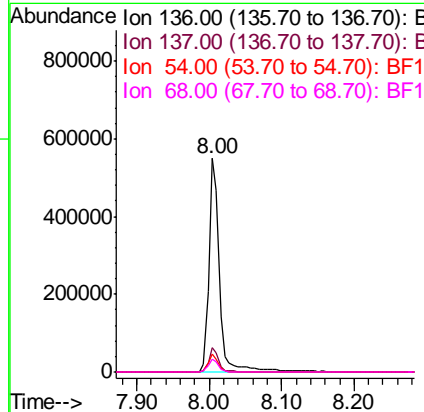
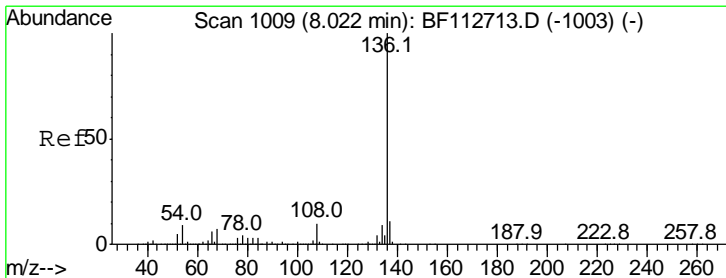
Instrument :  
 BNA\_F  
 ClientSampled :

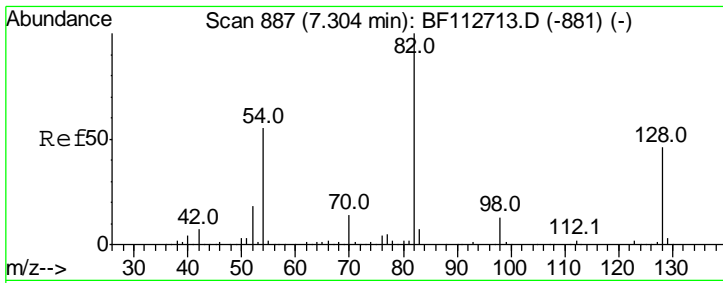
| Tgt Ion | Resp  | Lower | Upper |
|---------|-------|-------|-------|
| 70      | 40070 |       |       |
| 42      | 47.4  | 49.9  | 74.9# |
| 101     | 0.0   | 7.4   | 11.2# |
| 130     | 2.2   | 17.4  | 26.2# |



#21  
 Naphthalene-d8  
 Concen: 20.000 ng  
 RT: 8.00 min Scan# 1006  
 Delta R.T. -0.01 min  
 Lab File: BF113036.D  
 Acq: 13 Mar 2019 18:54

| Tgt Ion | Resp   | Lower | Upper |
|---------|--------|-------|-------|
| 136     | 563372 |       |       |
| 137     | 11.2   | 8.9   | 13.3  |
| 54      | 8.3    | 7.3   | 10.9  |
| 68      | 6.2    | 5.4   | 8.2   |

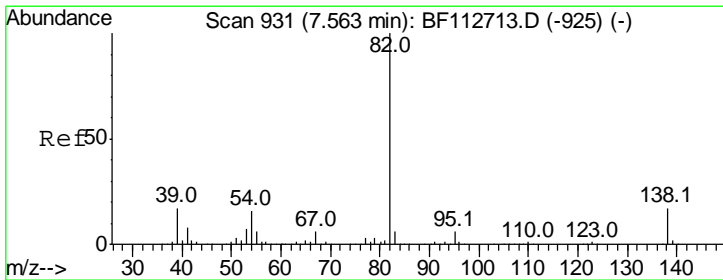
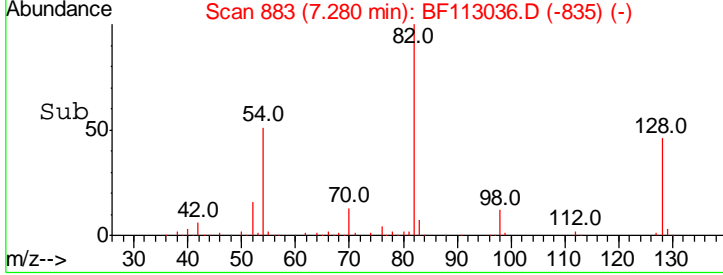
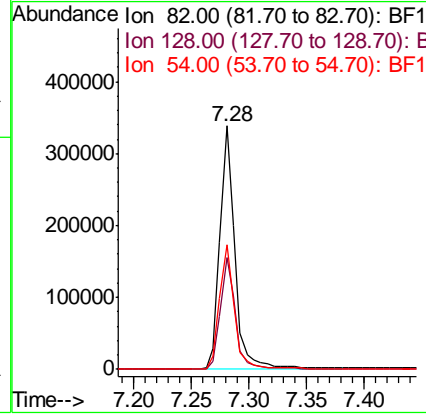
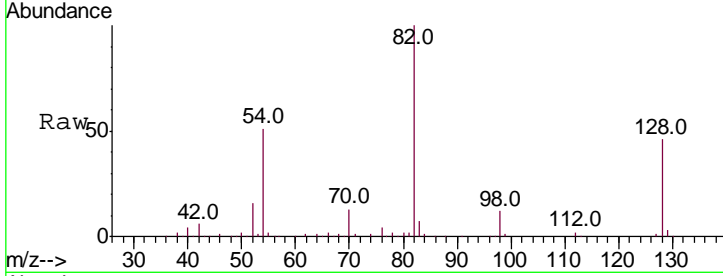




#23  
 Nitrobenzene-d5  
 Concen: 32.951 ng  
 RT: 7.28 min Scan# 883  
 Delta R.T. -0.02 min  
 Lab File: BF113036.D  
 Acq: 13 Mar 2019 18:54

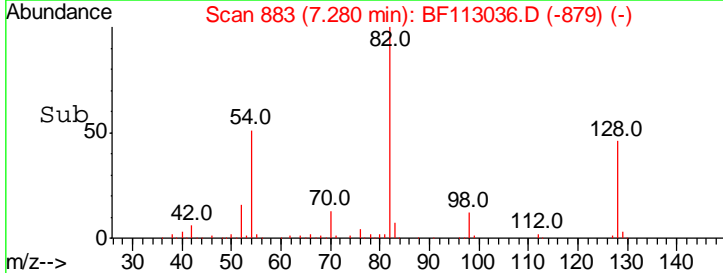
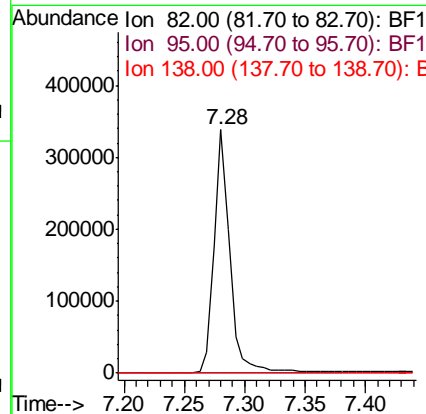
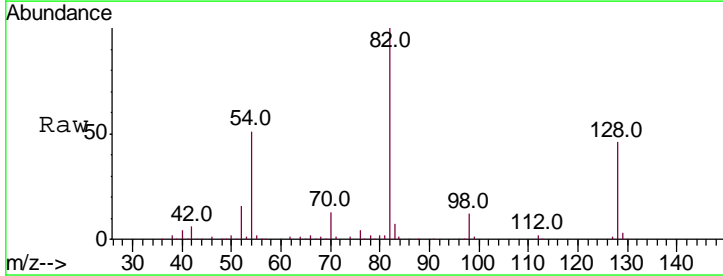
Instrument :  
 BNA\_F  
 ClientSampled :

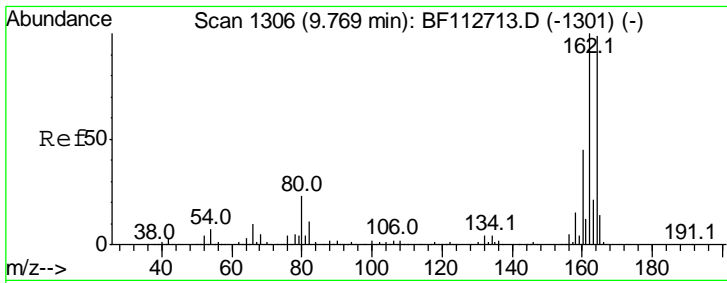
| Tgt Ion | Resp | Lower | Upper |
|---------|------|-------|-------|
| 82      | 100  |       |       |
| 128     | 45.9 | 36.3  | 54.5  |
| 54      | 51.4 | 43.7  | 65.5  |



#25  
 Isophorone  
 Concen: 15.295 ng  
 RT: 7.28 min Scan# 883  
 Delta R.T. -0.28 min  
 Lab File: BF113036.D  
 Acq: 13 Mar 2019 18:54

| Tgt Ion | Resp | Lower | Upper |
|---------|------|-------|-------|
| 82      | 100  |       |       |
| 95      | 0.0  | 5.2   | 7.8#  |
| 138     | 0.0  | 13.8  | 20.8# |

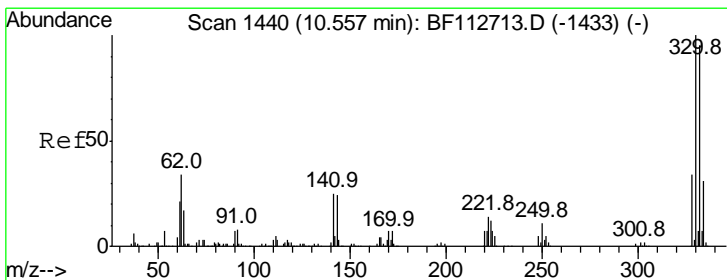
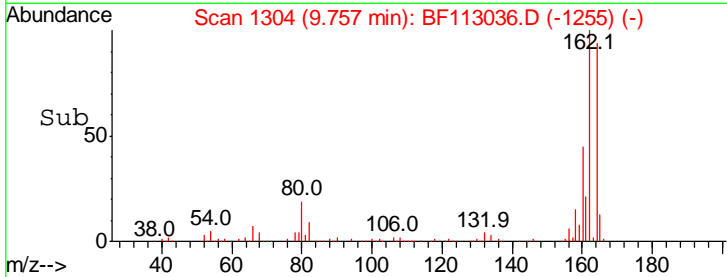
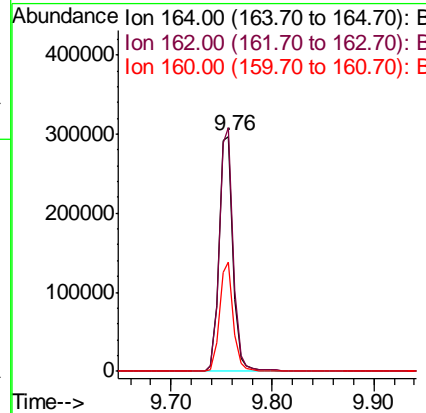
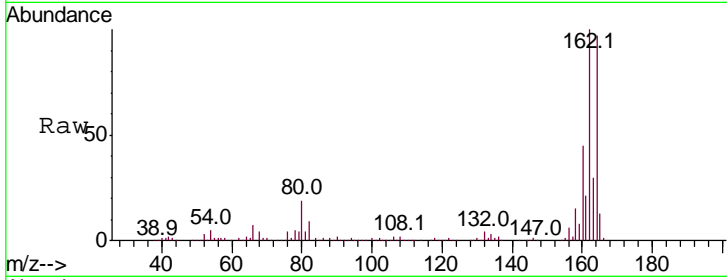




#39  
 Acenaphthene-d10  
 Concen: 20.000 ng  
 RT: 9.76 min Scan# 1304  
 Delta R.T. -0.01 min  
 Lab File: BF113036.D  
 Acq: 13 Mar 2019 18:54

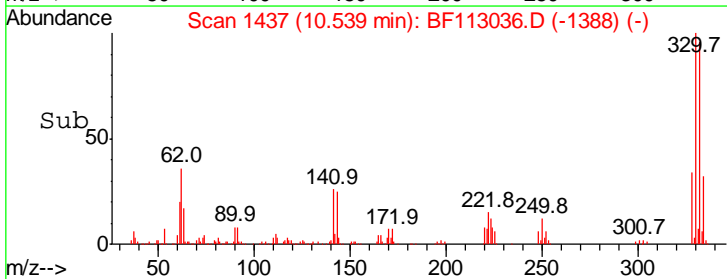
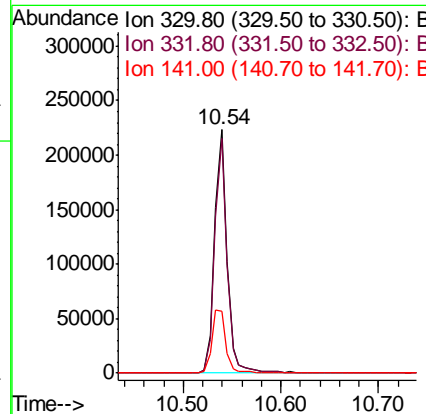
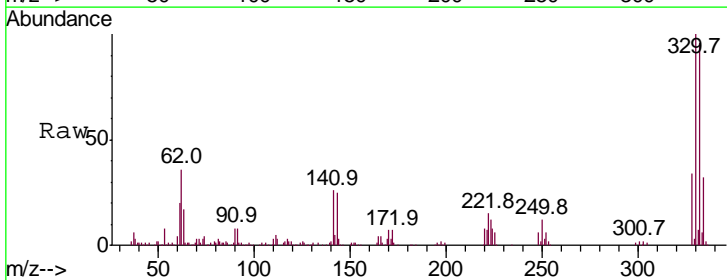
Instrument :  
 BNA\_F  
 ClientSampled :

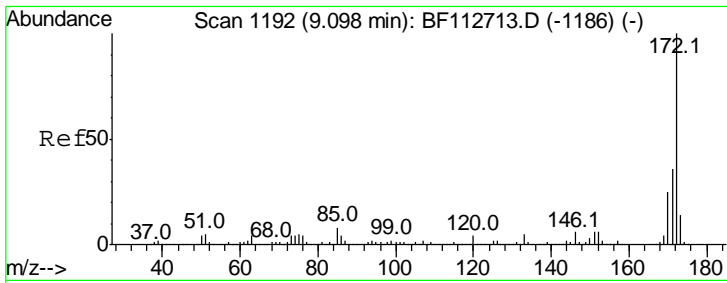
| Tgt Ion | Resp  | Lower | Upper |
|---------|-------|-------|-------|
| 164     | 100   |       |       |
| 162     | 103.6 | 80.6  | 120.8 |
| 160     | 46.3  | 36.0  | 54.0  |



#42  
 2,4,6-Tribromophenol  
 Concen: 65.857 ng  
 RT: 10.54 min Scan# 1437  
 Delta R.T. -0.01 min  
 Lab File: BF113036.D  
 Acq: 13 Mar 2019 18:54

| Tgt Ion | Resp | Lower | Upper |
|---------|------|-------|-------|
| 330     | 100  |       |       |
| 332     | 95.9 | 76.2  | 114.4 |
| 141     | 29.4 | 27.0  | 40.6  |

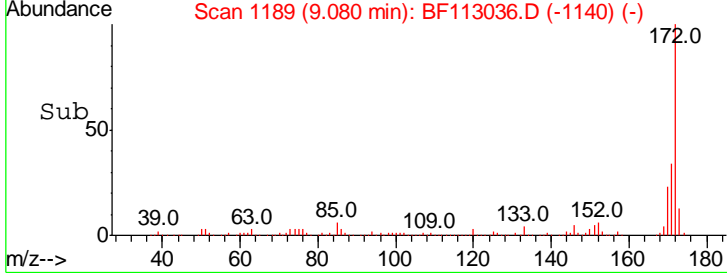
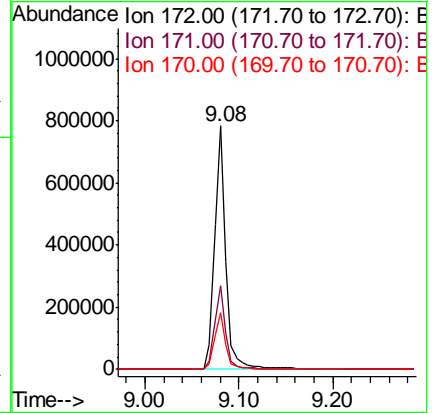
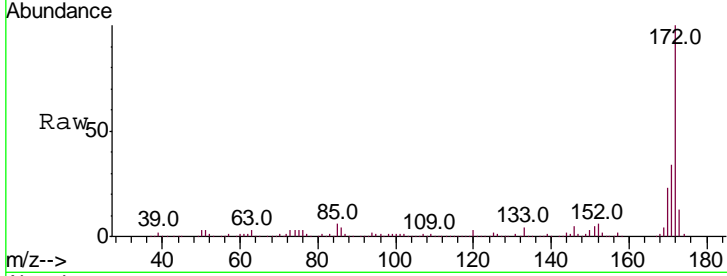




#45  
 2-Fluorobiphenyl  
 Concen: 32.627 ng  
 RT: 9.08 min Scan# 1189  
 Delta R.T. -0.01 min  
 Lab File: BF113036.D  
 Acq: 13 Mar 2019 18:54

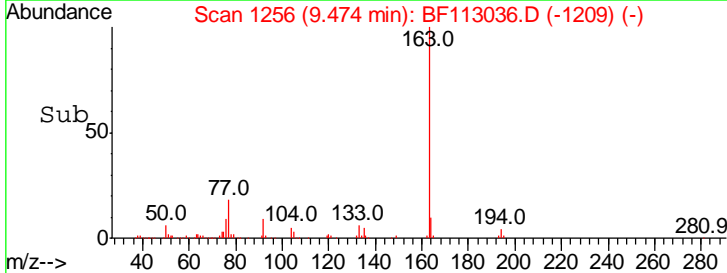
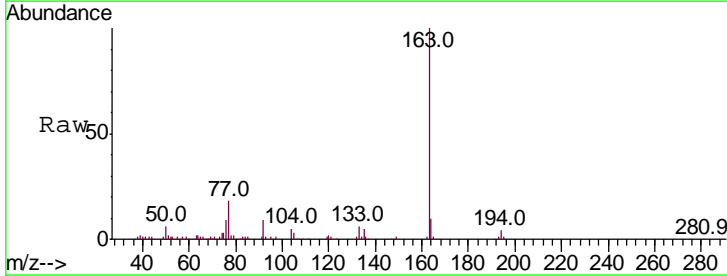
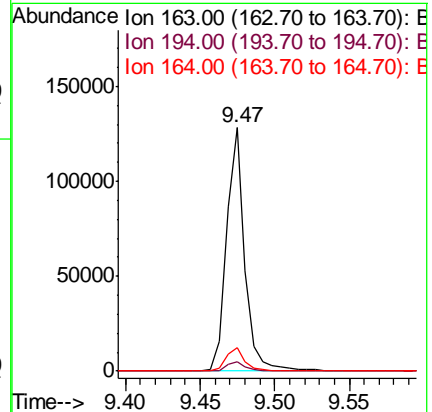
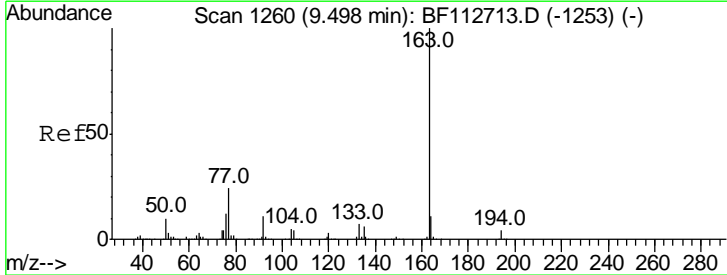
Instrument :  
 BNA\_F  
 ClientSampled :

| Tgt Ion | Resp | Lower | Upper |
|---------|------|-------|-------|
| 172     | 100  |       |       |
| 171     | 34.3 | 29.0  | 43.4  |
| 170     | 23.5 | 20.0  | 30.0  |

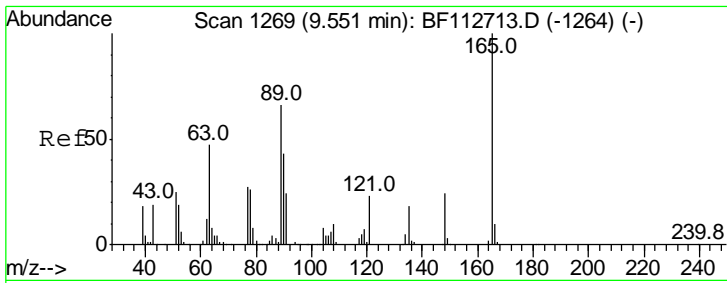


#50  
 Dimethylphthalate  
 Concen: 5.228 ng  
 RT: 9.47 min Scan# 1256  
 Delta R.T. -0.02 min  
 Lab File: BF113036.D  
 Acq: 13 Mar 2019 18:54

| Tgt Ion | Resp | Lower | Upper |
|---------|------|-------|-------|
| 163     | 100  |       |       |
| 194     | 3.8  | 3.0   | 4.4   |
| 164     | 9.6  | 8.4   | 12.6  |



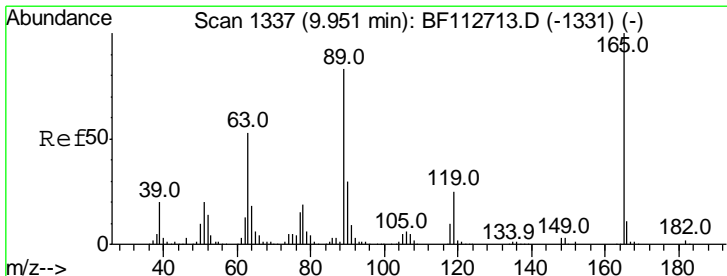
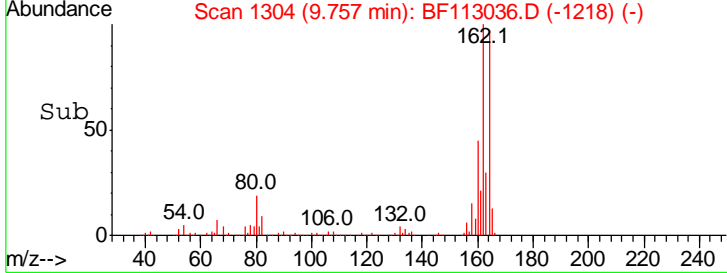
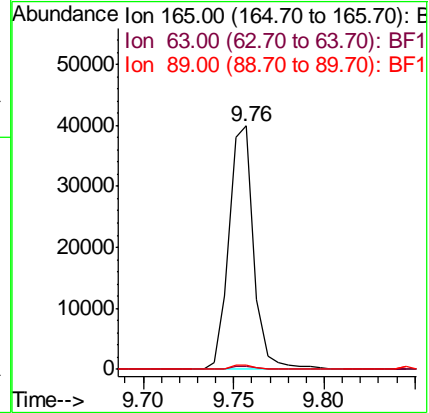
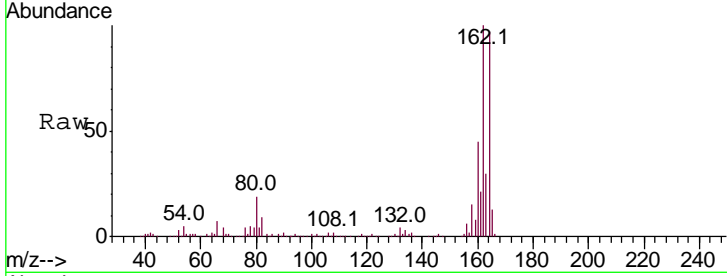




#51  
 2,6-Dinitrotoluene  
 Concen: 8.644 ng  
 RT: 9.76 min Scan# 1304  
 Delta R.T. 0.21 min  
 Lab File: BF113036.D  
 Acq: 13 Mar 2019 18:54

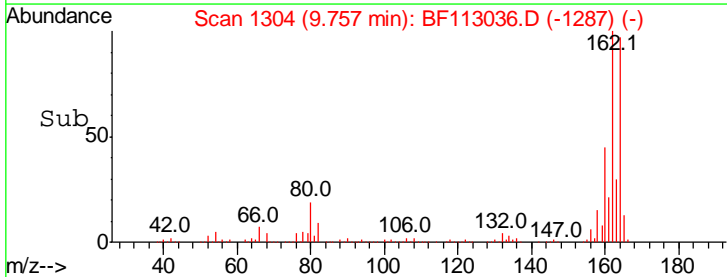
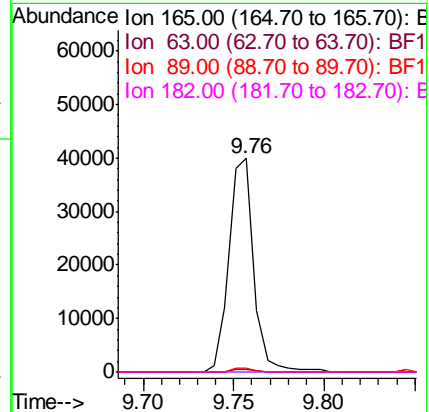
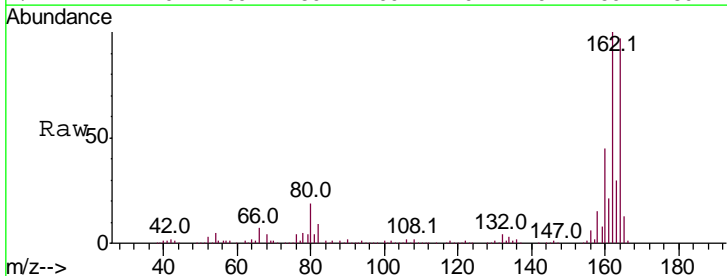
Instrument :  
 BNA\_F  
 ClientSampleId :

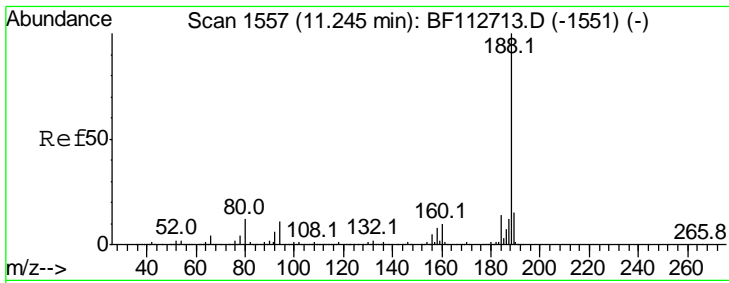
| Tgt Ion | Ratio | Lower | Upper |
|---------|-------|-------|-------|
| 165     | 100   |       |       |
| 63      | 1.3   | 54.1  | 81.1# |
| 89      | 1.8   | 52.8  | 79.2# |



#57  
 2,4-Dinitrotoluene  
 Concen: 6.954 ng  
 RT: 9.76 min Scan# 1304  
 Delta R.T. -0.20 min  
 Lab File: BF113036.D  
 Acq: 13 Mar 2019 18:54

| Tgt Ion | Ratio | Lower | Upper |
|---------|-------|-------|-------|
| 165     | 100   |       |       |
| 63      | 1.3   | 42.2  | 63.2# |
| 89      | 1.8   | 66.2  | 99.4# |
| 182     | 0.0   | 1.8   | 2.6#  |

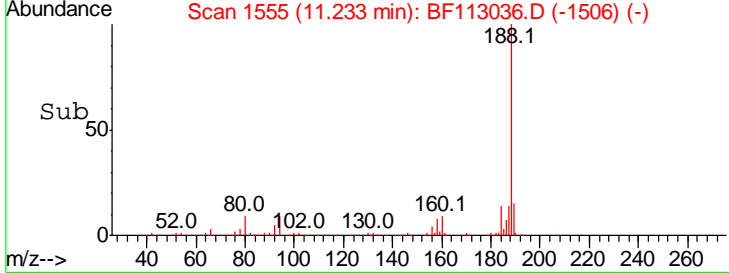
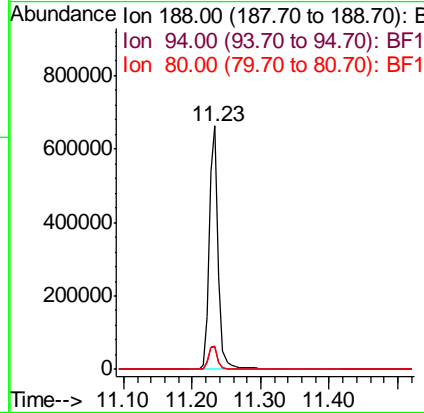
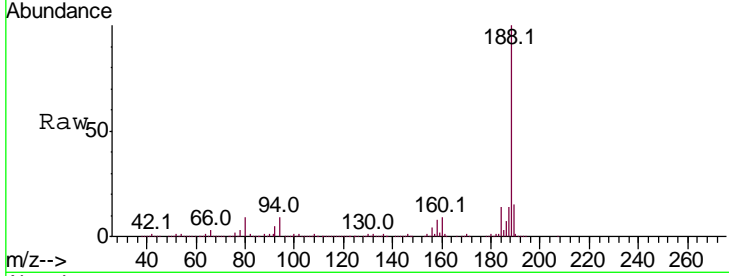




#64  
 Phenanthrene-d10  
 Concen: 20.000 ng  
 RT: 11.23 min Scan# 1555  
 Delta R.T. -0.01 min  
 Lab File: BF113036.D  
 Acq: 13 Mar 2019 18:54

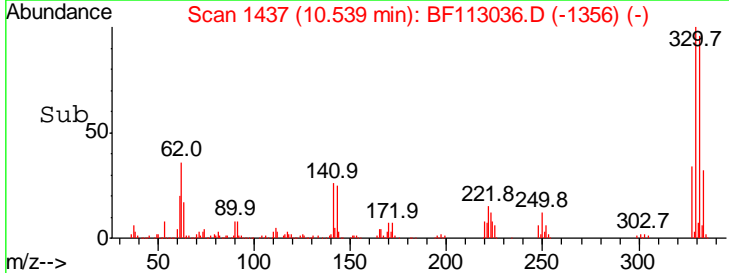
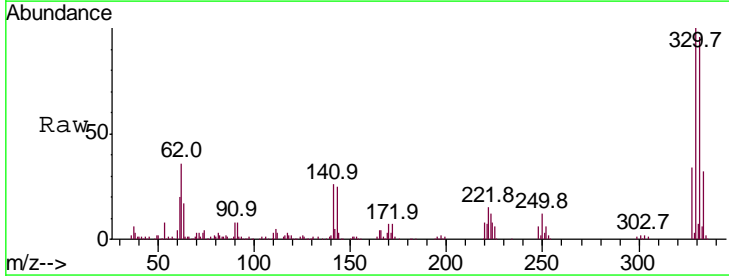
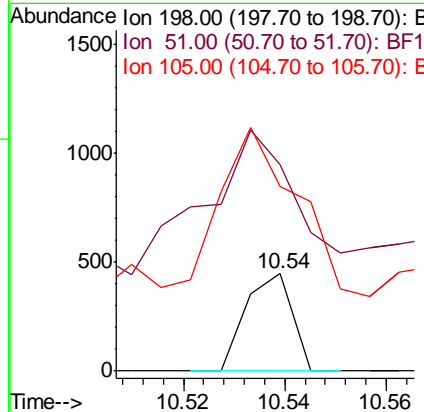
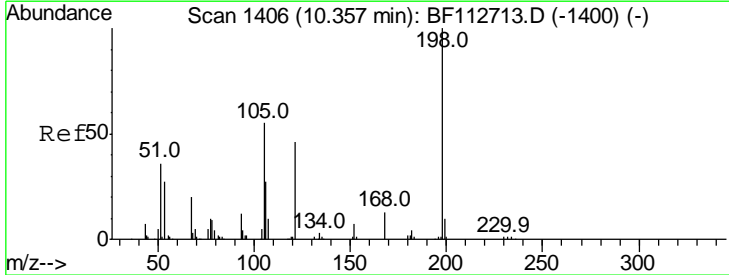
Instrument :  
 BNA\_F  
 ClientSampled :

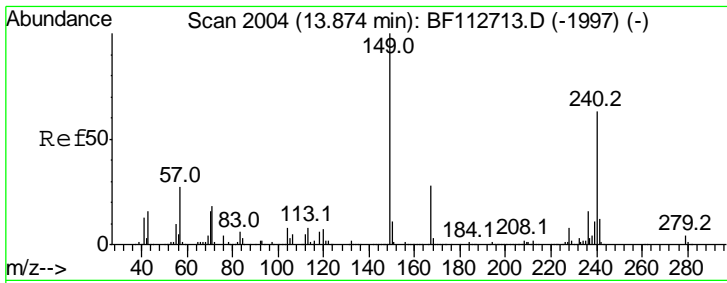
| Tgt Ion | Resp | Lower | Upper |
|---------|------|-------|-------|
| 188     | 100  |       |       |
| 94      | 9.3  | 9.0   | 13.4  |
| 80      | 9.4  | 9.2   | 13.8  |



#65  
 4,6-Dinitro-2-methylphenol  
 Concen: 4.713 ng  
 RT: 10.54 min Scan# 1437  
 Delta R.T. 0.18 min  
 Lab File: BF113036.D  
 Acq: 13 Mar 2019 18:54

| Tgt Ion | Resp  | Lower | Upper |
|---------|-------|-------|-------|
| 198     | 100   |       |       |
| 51      | 212.6 | 43.8  | 83.8# |
| 105     | 190.4 | 36.5  | 76.5# |

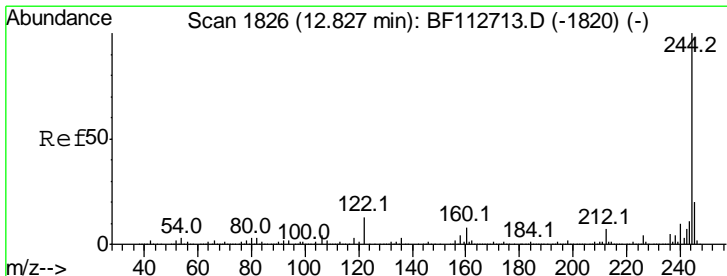
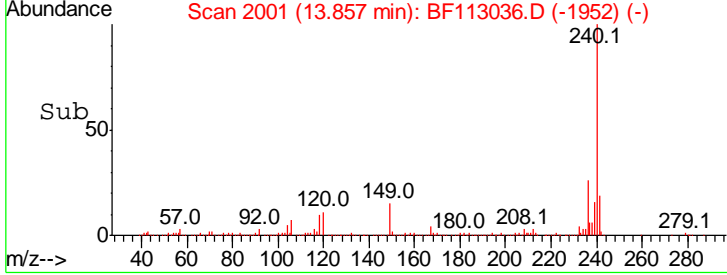
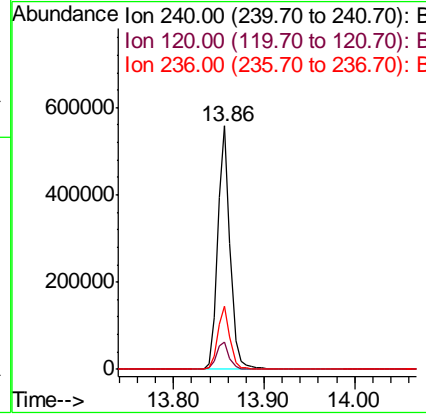
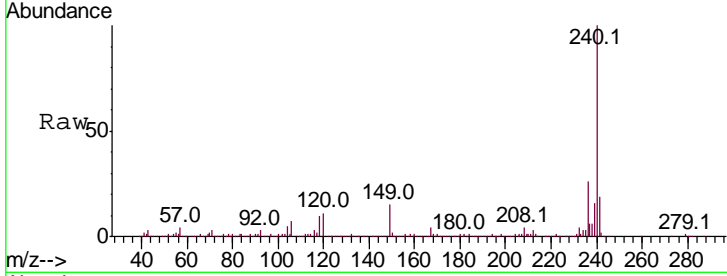




#76  
 Chrysene-d12  
 Concen: 20.000 ng  
 RT: 13.86 min Scan# 2001  
 Delta R.T. -0.01 min  
 Lab File: BF113036.D  
 Acq: 13 Mar 2019 18:54

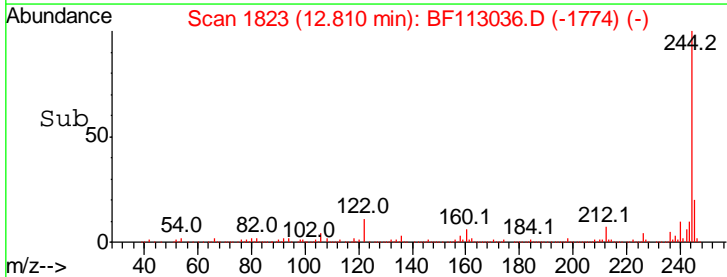
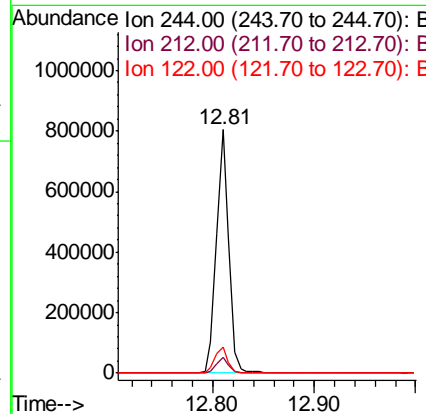
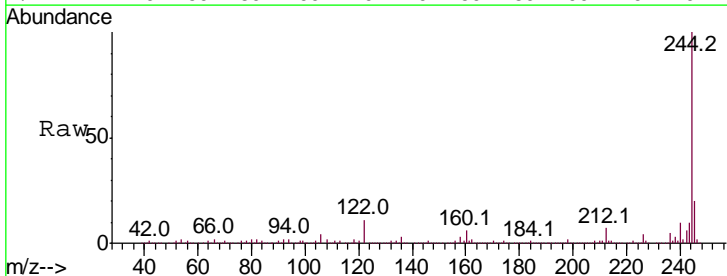
Instrument :  
 BNA\_F  
 ClientSampled :

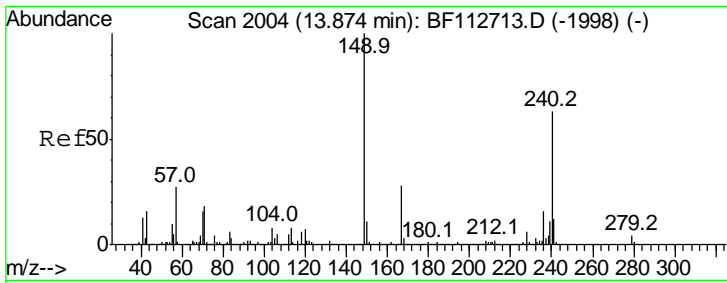
| Tgt Ion | Resp | Lower | Upper |
|---------|------|-------|-------|
| 240     | 100  |       |       |
| 120     | 11.3 | 8.9   | 13.3  |
| 236     | 26.1 | 20.7  | 31.1  |



#79  
 Terphenyl-d14  
 Concen: 25.197 ng  
 RT: 12.81 min Scan# 1823  
 Delta R.T. -0.01 min  
 Lab File: BF113036.D  
 Acq: 13 Mar 2019 18:54

| Tgt Ion | Resp | Lower | Upper |
|---------|------|-------|-------|
| 244     | 100  |       |       |
| 212     | 6.6  | 5.6   | 8.4   |
| 122     | 10.9 | 10.5  | 15.7  |

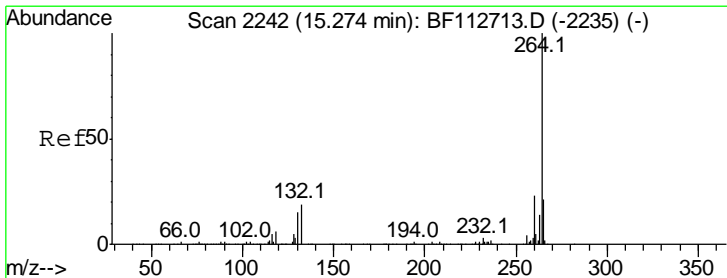
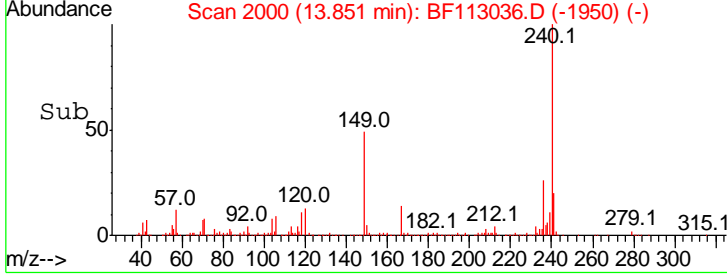
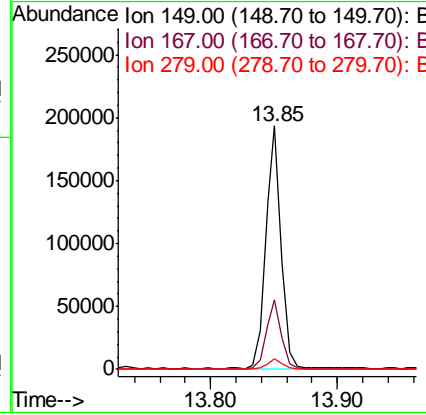
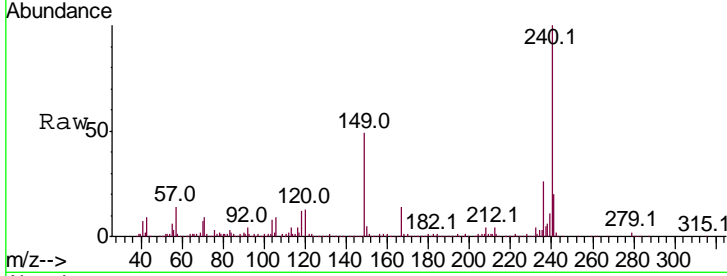




#84  
 Bis(2-ethylhexyl)phthalate  
 Concen: 7.087 ng  
 RT: 13.85 min Scan# 2000  
 Delta R.T. -0.01 min  
 Lab File: BF113036.D  
 Acq: 13 Mar 2019 18:54

Instrument :  
 BNA\_F  
 ClientSampled :

| Tgt Ion | Resp | Lower | Upper |
|---------|------|-------|-------|
| 149     | 100  |       |       |
| 167     | 28.7 | 22.4  | 33.6  |
| 279     | 4.1  | 3.3   | 4.9   |



#87  
 Perylene-d12  
 Concen: 20.000 ng  
 RT: 15.26 min Scan# 2240  
 Delta R.T. -0.01 min  
 Lab File: BF113036.D  
 Acq: 13 Mar 2019 18:54

| Tgt Ion | Resp | Lower | Upper |
|---------|------|-------|-------|
| 264     | 100  |       |       |
| 260     | 24.0 | 18.7  | 28.1  |
| 265     | 21.3 | 17.2  | 25.8  |

