

Data Path : Z:\HPCHEM1\BNA_F\DATA\BF031416\
 Data File : BF085448.D
 Acq On : 15 Mar 2016 1:36
 Operator : UM/SJ
 Sample : H1730-04
 Misc :
 ALS Vial : 27 Sample Multiplier: 1

Instrument :
 BNA_F
 ClientSampled :
 W170TH-SB-18-COMP(0.5-1.5)

Manual Integrations
 APPROVED

Sohil
 3/15/2016 2:09:34 PM

Quant Time: Mar 15 12:32:03 2016
 Quant Method : Z:\HPCHEM1\BNA_F\METHODS\8270-BF030316.M
 Quant Title : ASP BNA STANDARDS FOR 5 POINT CALIBRATION
 QLast Update : Fri Mar 04 00:54:58 2016
 Response via : Initial Calibration

Internal Standards	R.T.	QIon	Response	Conc	Units	Dev(Min)
1) 1,4-Dichlorobenzene-d4	6.93	152	168528	20.00	ng	-0.06
21) Naphthalene-d8	8.21	136	648837	20.00	ng	-0.06
38) Acenaphthene-d10	9.97	164	275702	20.00	ng	-0.06
63) Phenanthrene-d10	11.45	188	406315	20.00	ng	-0.06
75) Chrysene-d12	14.09	240	307380	20.00	ng	-0.06
86) Perylene-d12	15.56	264	261657	20.00	ng	-0.06

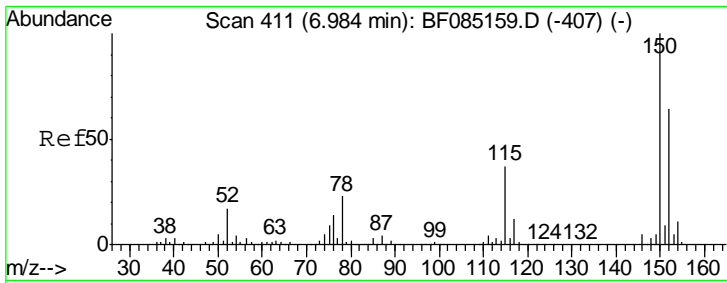
System Monitoring Compounds

5) 2-Fluorophenol	5.53	112	1307718	130.16	ng	-0.05
7) Phenol-d6	6.56	99	1742634	132.39	ng	-0.05
23) Nitrobenzene-d5	7.49	82	1020727	84.18	ng	-0.06
41) 2,4,6-Tribromophenol	10.76	330	319672	135.51	ng	-0.06
44) 2-Fluorobiphenyl	9.29	172	1664519	91.82	ng	-0.06
78) Terphenyl-d14	13.04	244	1010989	76.35	ng	-0.05

Target Compounds

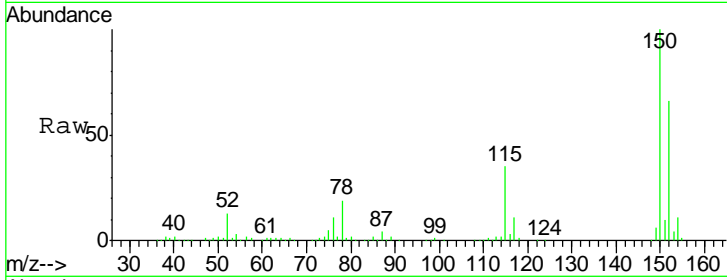
Target Compounds	R.T.	QIon	Response	Conc	Units	Qvalue
48) Acenaphthylene	9.82	152	76411	2.73	ng	97
49) Dimethylphthalate	9.68	163	324927	15.35	ng	99
57) Fluorene	10.52	166	60854	3.49	ng	97
70) Phenanthrene	11.48	178	605670	28.44	ng	98
71) Anthracene	11.52	178	215870	9.55	ng	99
74) Fluoranthene	12.66	202	910160	42.59	ng	100
77) Pyrene	12.89	202	845033	36.53	ng	99
80) Benzo(a)anthracene	14.08	228	475075m	25.82	ng	
82) Chrysene	14.12	228	424321m	24.96	ng	
83) Bis(2-ethylhexyl)phthalate	14.07	149	35284	2.55	ng	# 92
85) Indeno(1,2,3-cd)pyrene	17.01	276	174774	13.17	ng	# 92
87) Benzo(b)fluoranthene	15.13	252	509946m	29.24	ng	
88) Benzo(k)fluoranthene	15.16	252	153055m	10.88	ng	
89) Benzo(a)pyrene	15.49	252	346206	23.95	ng	# 93
90) Dibenzo(a,h)anthracene	17.01	278	51337m	4.16	ng	
91) Benzo(g,h,i)perylene	17.44	276	161733	13.04	ng	98

(#) = qualifier out of range (m) = manual integration (+) = signals summed



#1
 1,4-Dichlorobenzene-d4
 Concen: 20.00 ng
 RT: 6.93 min Scan# 406
 Delta R.T. -0.06 min
 Lab File: BF085448.D
 Acq: 15 Mar 2016 1:36

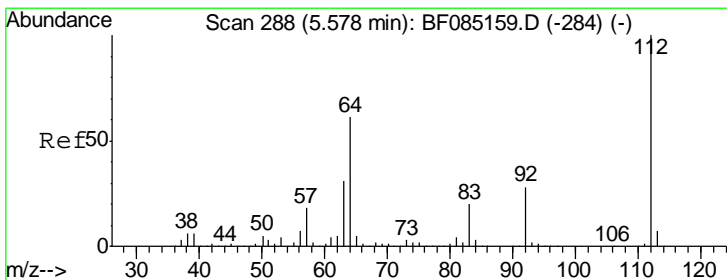
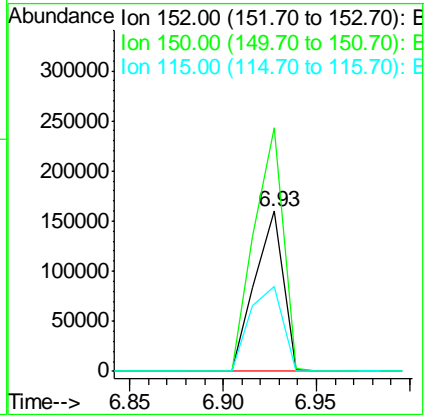
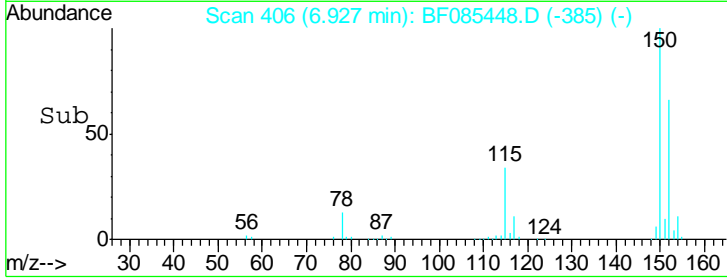
Instrument :
 BNA_F
ClientSampled :
 W170TH-SB-18-COMP(0.5-1.5)



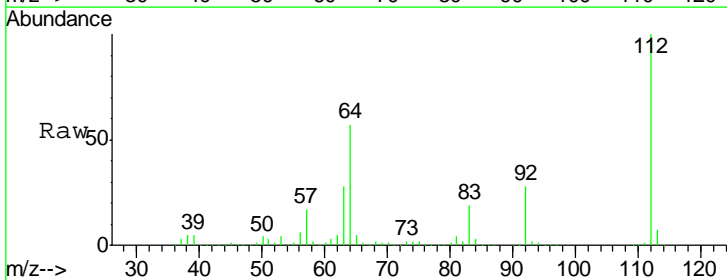
Tgt Ion:152 Resp: 168528

Ion	Ratio	Lower	Upper
152	100		
150	152.2	124.6	186.8
115	52.9	46.6	70.0

Manual Integrations
APPROVED
 Sohil
 3/15/2016 2:09:34 PM

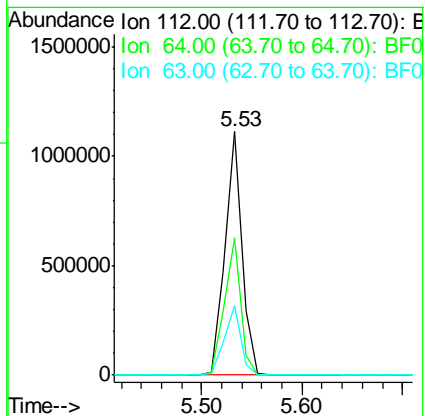
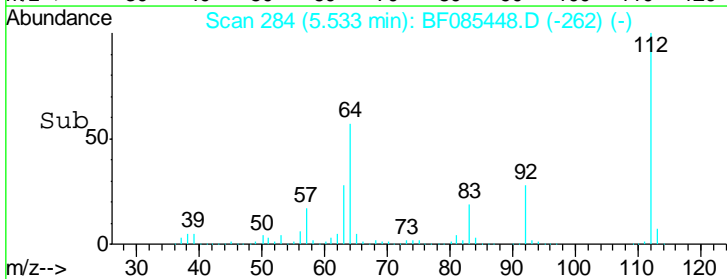


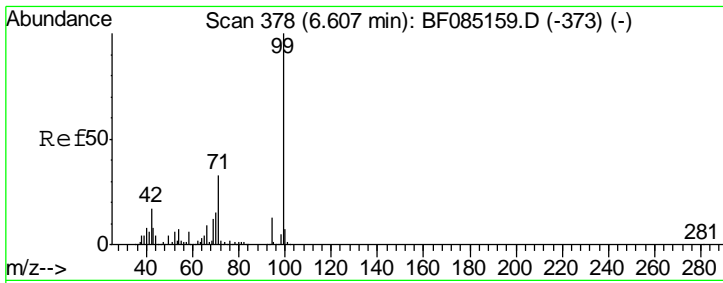
#5
 2-Fluorophenol
 Concen: 130.16 ng
 RT: 5.53 min Scan# 284
 Delta R.T. -0.05 min
 Lab File: BF085448.D
 Acq: 15 Mar 2016 1:36



Tgt Ion:112 Resp: 1307718

Ion	Ratio	Lower	Upper
112	100		
64	56.5	49.0	73.4
63	28.5	24.8	37.2



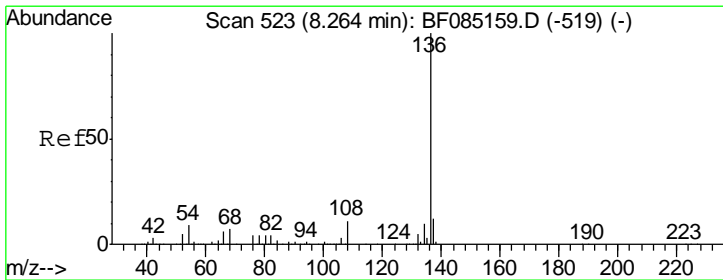
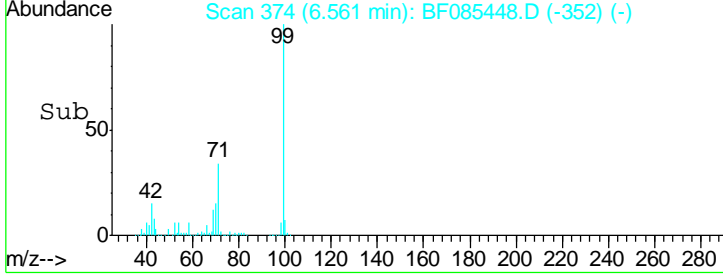
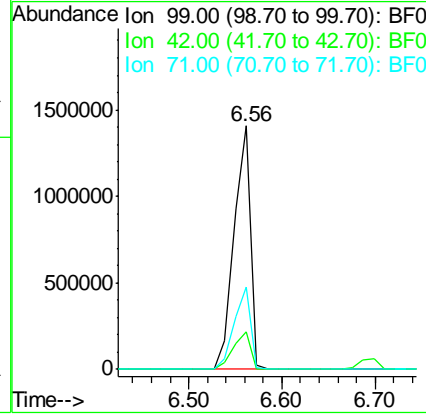
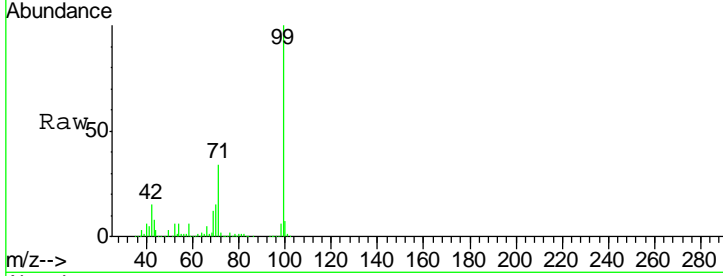


#7
 Phenol-d6
 Concen: 132.39 ng
 RT: 6.56 min Scan# 374
 Delta R.T. -0.05 min
 Lab File: BF085448.D
 Acq: 15 Mar 2016 1:36

Instrument :
 BNA_F
ClientSampled :
 W170TH-SB-18-COMP(0.5-1.5)

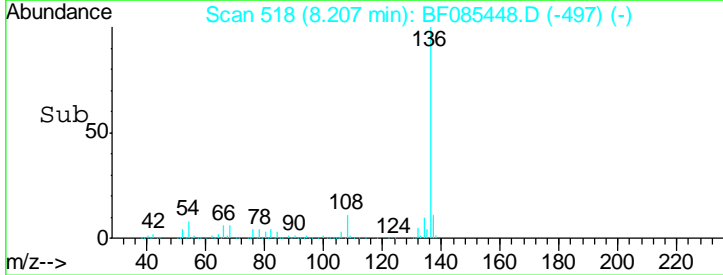
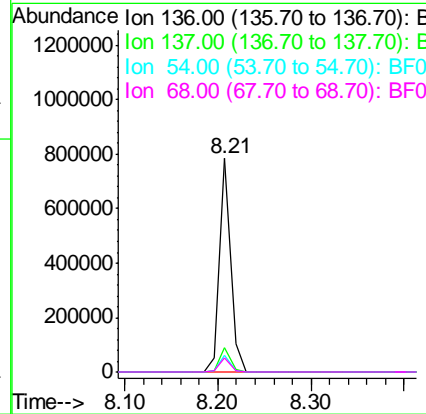
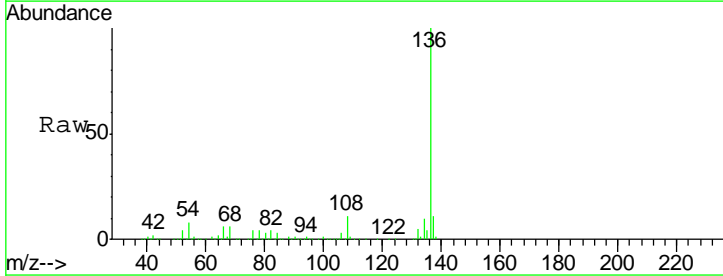
Tgt Ion	Resp	Lower	Upper
99	1742634		
42	15.3	13.6	20.4
71	34.0	26.7	40.1

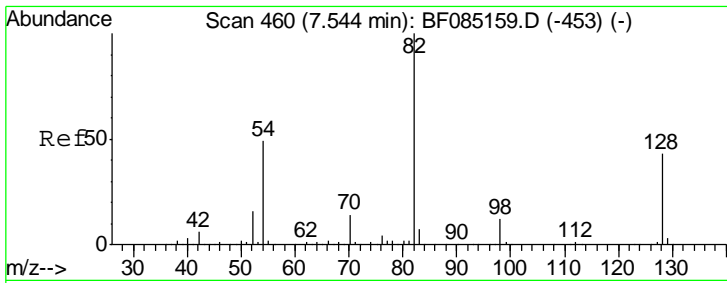
Manual Integrations
APPROVED
 Sohil
 3/15/2016 2:09:34 PM



#21
 Naphthalene-d8
 Concen: 20.00 ng
 RT: 8.21 min Scan# 518
 Delta R.T. -0.06 min
 Lab File: BF085448.D
 Acq: 15 Mar 2016 1:36

Tgt Ion	Resp	Lower	Upper
136	648837		
137	11.4	9.3	13.9
54	7.5	7.4	11.2
68	6.4	6.0	9.0





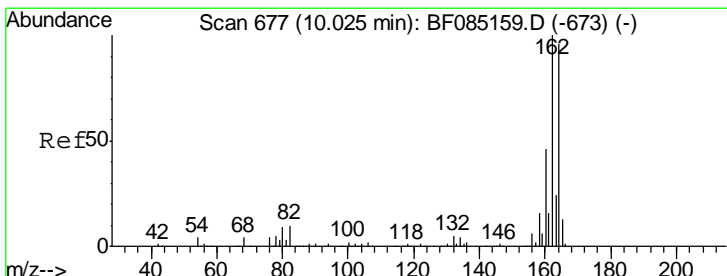
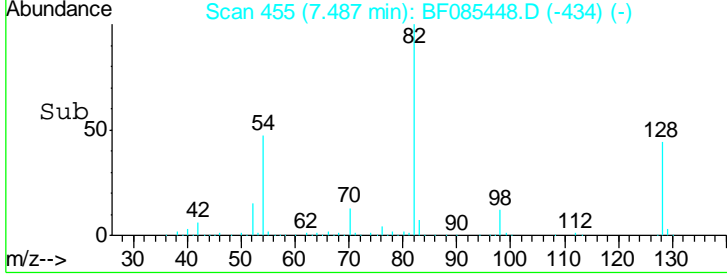
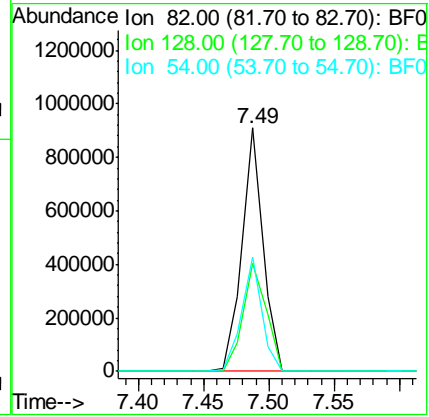
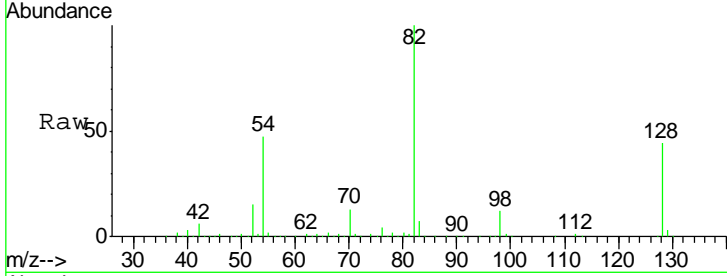
#23
 Nitrobenzene-d5
 Concen: 84.18 ng
 RT: 7.49 min Scan# 455
 Delta R.T. -0.06 min
 Lab File: BF085448.D
 Acq: 15 Mar 2016 1:36

Instrument :
 BNA_F
ClientSampleId :
 W170TH-SB-18-COMP(0.5-1.5)

Tgt Ion: 82 Resp: 1020727

Ion	Ratio	Lower	Upper
82	100		
128	44.3	34.5	51.7
54	46.8	39.3	58.9

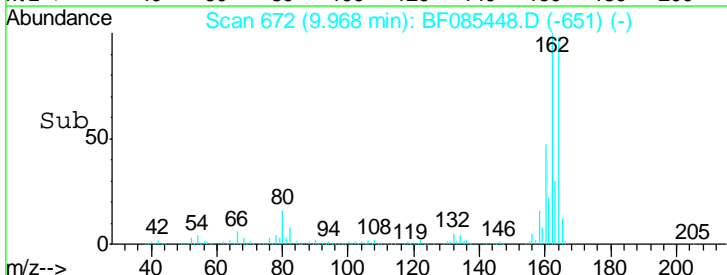
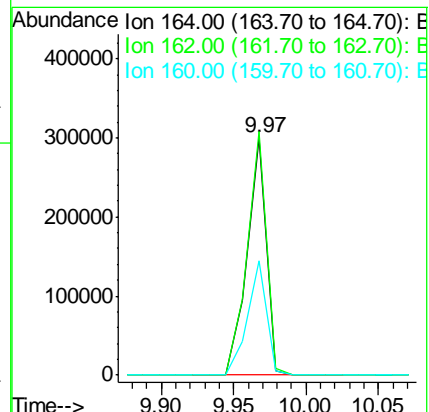
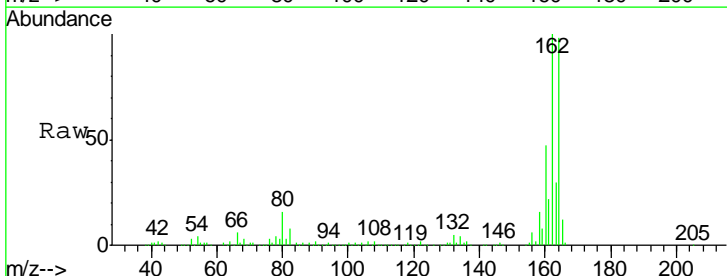
Manual Integrations
APPROVED
 Sohil
 3/15/2016 2:09:34 PM

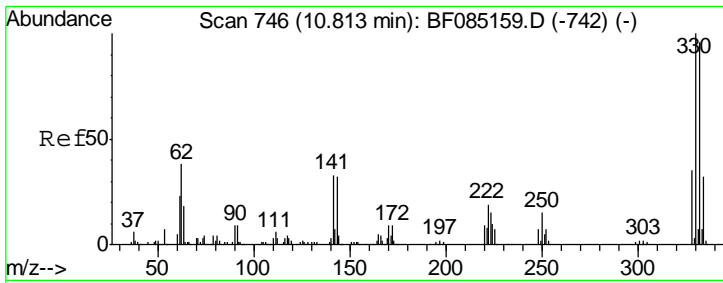


#38
 Acenaphthene-d10
 Concen: 20.00 ng
 RT: 9.97 min Scan# 672
 Delta R.T. -0.06 min
 Lab File: BF085448.D
 Acq: 15 Mar 2016 1:36

Tgt Ion: 164 Resp: 275702

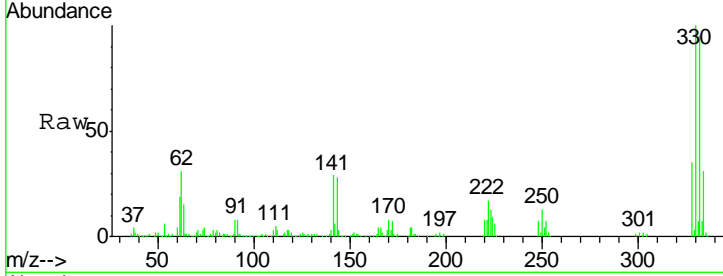
Ion	Ratio	Lower	Upper
164	100		
162	102.6	83.3	124.9
160	48.4	37.9	56.9





#41
 2,4,6-Tribromophenol
 Concen: 135.51 ng
 RT: 10.76 min Scan# 741
 Delta R.T. -0.06 min
 Lab File: BF085448.D
 Acq: 15 Mar 2016 1:36

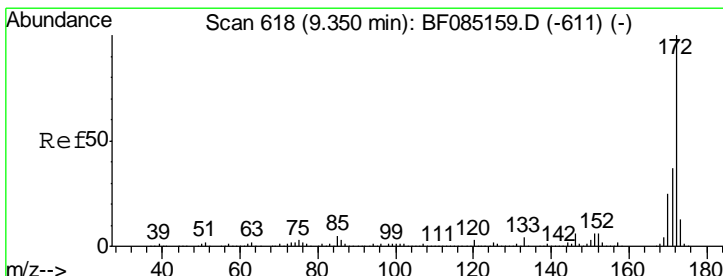
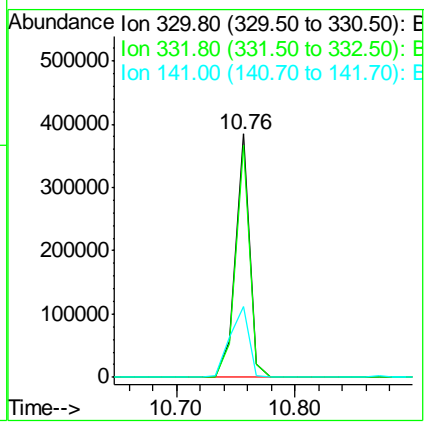
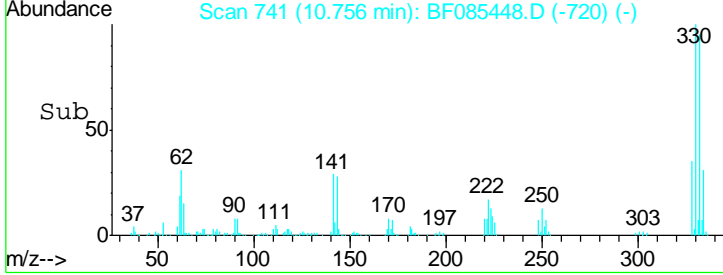
Instrument :
 BNA_F
ClientSampled :
 W170TH-SB-18-COMP(0.5-1.5)



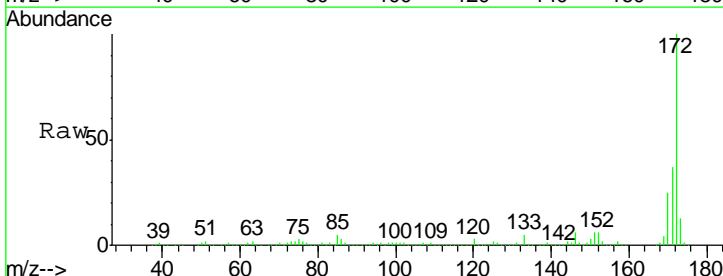
Tgt Ion: 330 Resp: 319672

Ion	Ratio	Lower	Upper
330	100		
332	95.1	77.1	115.7
141	38.4	35.0	52.6

Manual Integrations
APPROVED
 Sohil
 3/15/2016 2:09:34 PM

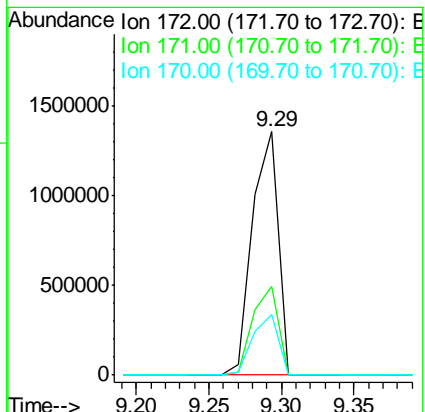
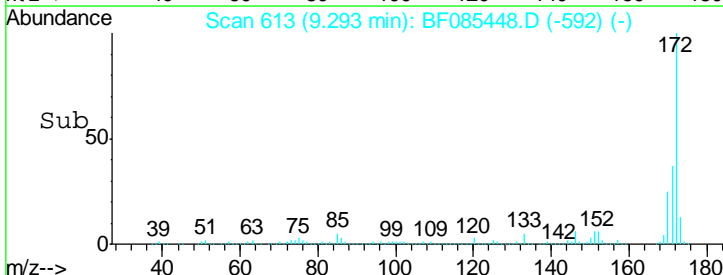


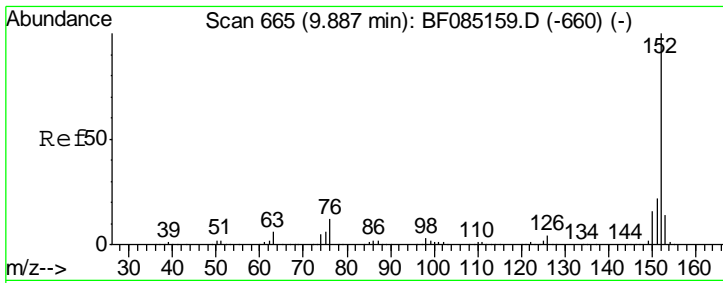
#44
 2-Fluorobiphenyl
 Concen: 91.82 ng
 RT: 9.29 min Scan# 613
 Delta R.T. -0.06 min
 Lab File: BF085448.D
 Acq: 15 Mar 2016 1:36



Tgt Ion: 172 Resp: 1664519

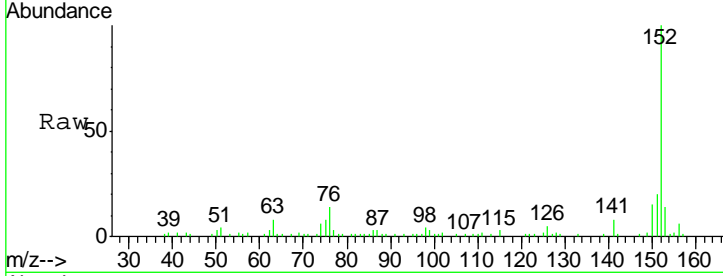
Ion	Ratio	Lower	Upper
172	100		
171	36.5	29.3	43.9
170	25.1	20.0	30.0





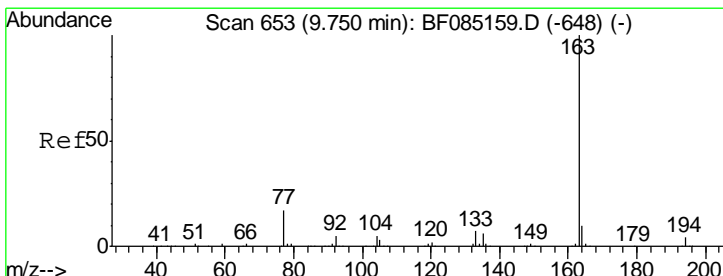
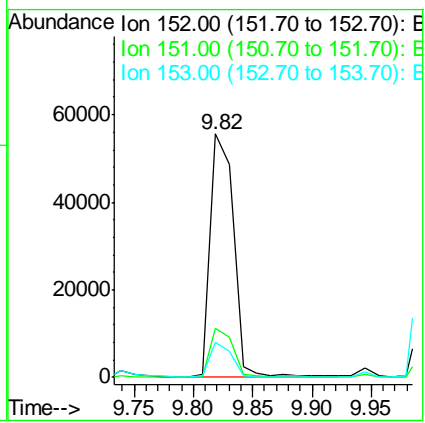
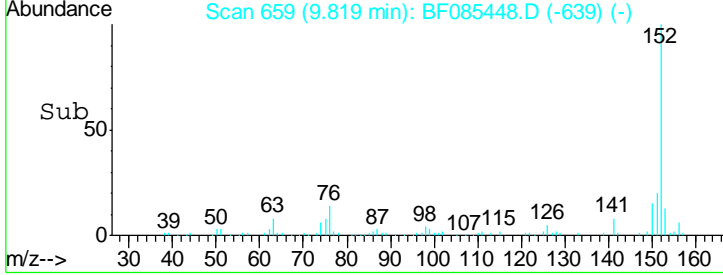
#48
 Acenaphthylene
 Concen: 2.73 ng
 RT: 9.82 min Scan# 659
 Delta R.T. -0.07 min
 Lab File: BF085448.D
 Acq: 15 Mar 2016 1:36

Instrument :
 BNA_F
ClientSampled :
 W170TH-SB-18-COMP(0.5-1.5)

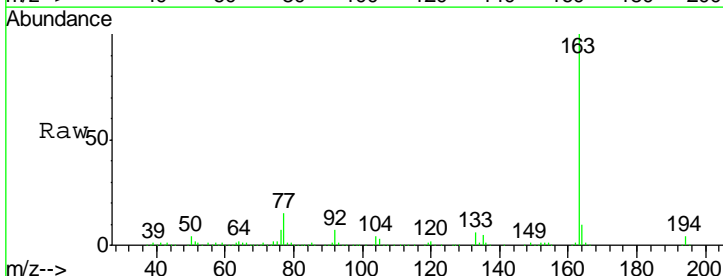


Tgt Ion	Resp	Lower	Upper
152	100		
151	20.1	17.5	26.3
153	14.3	11.3	16.9

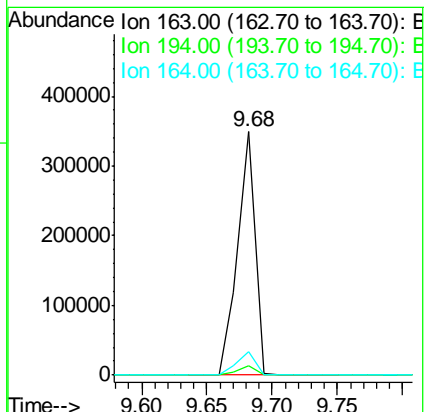
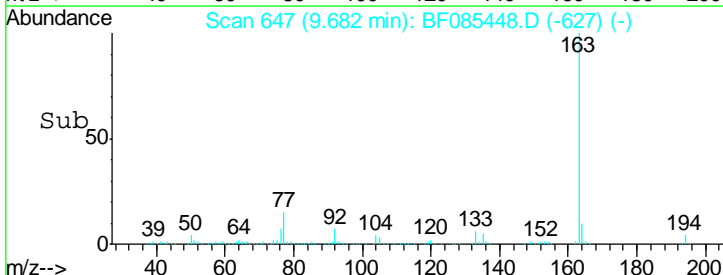
Manual Integrations
APPROVED
 Sohil
 3/15/2016 2:09:34 PM

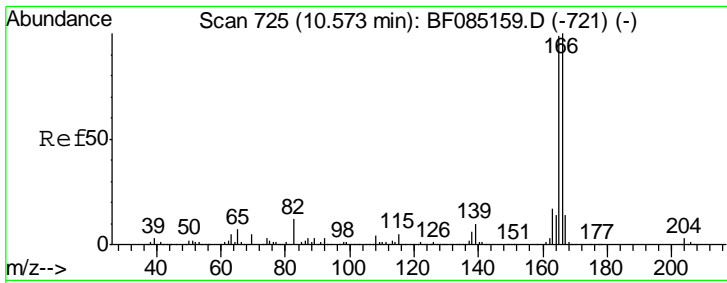


#49
 Dimethylphthalate
 Concen: 15.35 ng
 RT: 9.68 min Scan# 647
 Delta R.T. -0.07 min
 Lab File: BF085448.D
 Acq: 15 Mar 2016 1:36



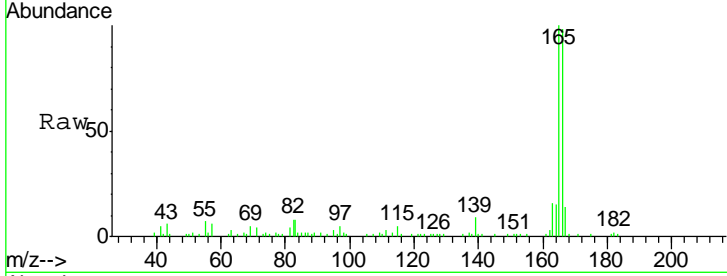
Tgt Ion	Resp	Lower	Upper
163	100		
194	4.0	3.1	4.7
164	9.7	8.2	12.4





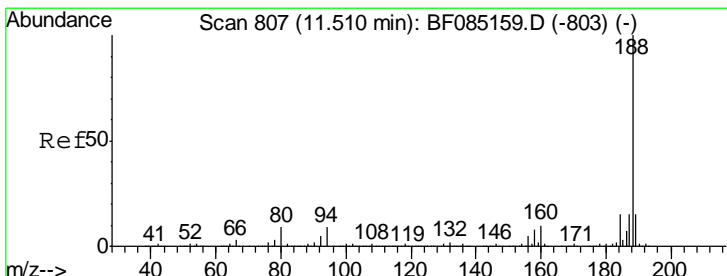
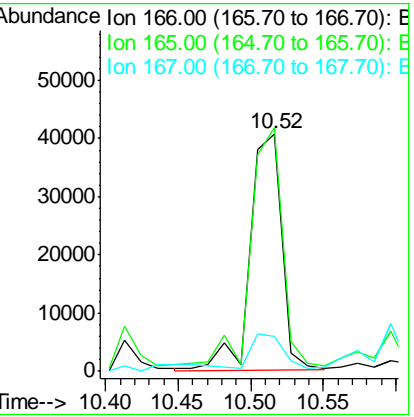
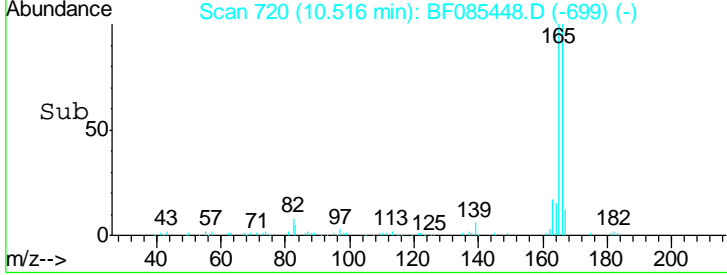
#57
 Fluorene
 Concen: 3.49 ng
 RT: 10.52 min Scan# 720
 Delta R.T. -0.06 min
 Lab File: BF085448.D
 Acq: 15 Mar 2016 1:36

Instrument :
 BNA_F
ClientSampleId :
 W170TH-SB-18-COMP(0.5-1.5)



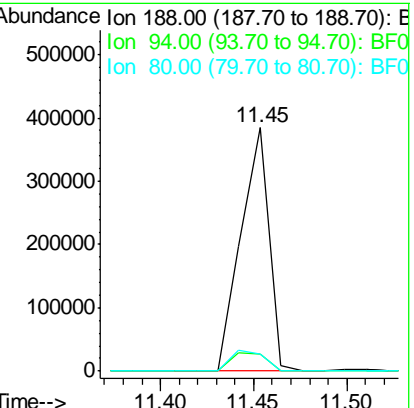
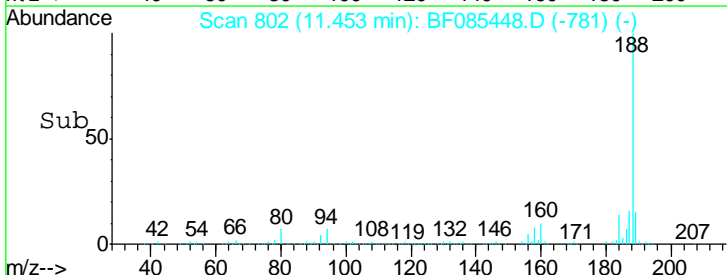
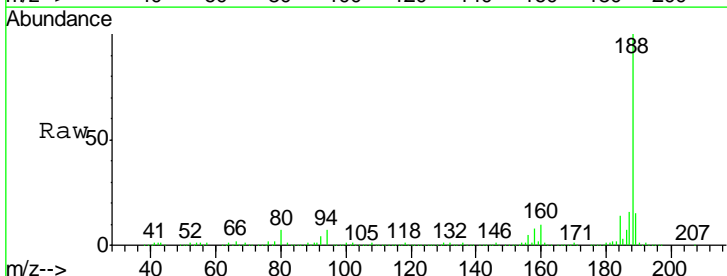
Tgt Ion:166 Resp: 60854
 Ion Ratio Lower Upper
 166 100
 165 102.4 79.4 119.0
 167 14.7 11.0 16.6

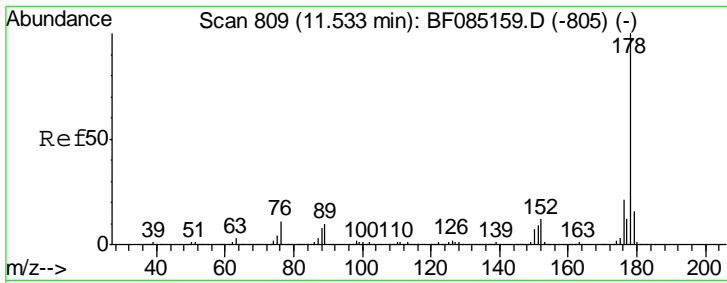
Manual Integrations
APPROVED
 Sohil
 3/15/2016 2:09:34 PM



#63
 Phenanthrene-d10
 Concen: 20.00 ng
 RT: 11.45 min Scan# 802
 Delta R.T. -0.06 min
 Lab File: BF085448.D
 Acq: 15 Mar 2016 1:36

Tgt Ion:188 Resp: 406315
 Ion Ratio Lower Upper
 188 100
 94 7.1 7.0 10.6
 80 7.0 7.4 11.0#



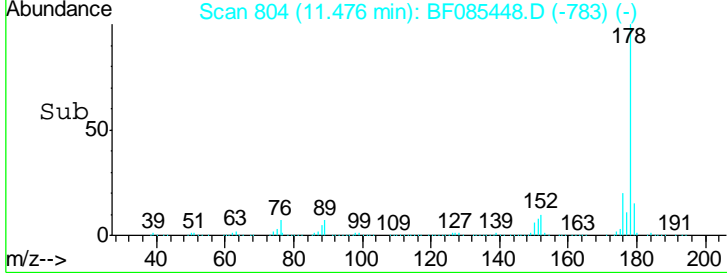
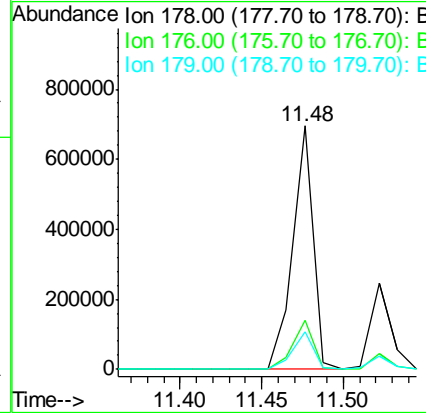
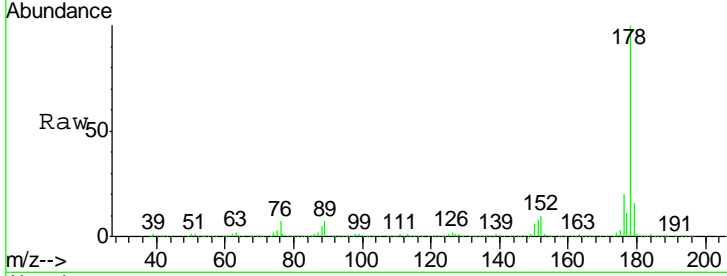


#70
 Phenanthrene
 Concen: 28.44 ng
 RT: 11.48 min Scan# 804
 Delta R.T. -0.06 min
 Lab File: BF085448.D
 Acq: 15 Mar 2016 1:36

Instrument :
 BNA_F
ClientSampled :
 W170TH-SB-18-COMP(0.5-1.5)

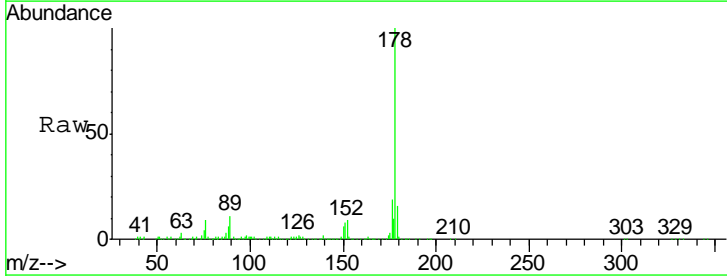
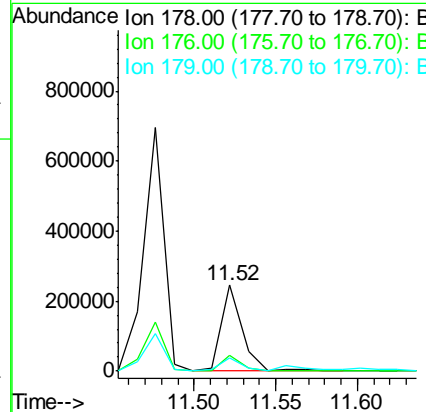
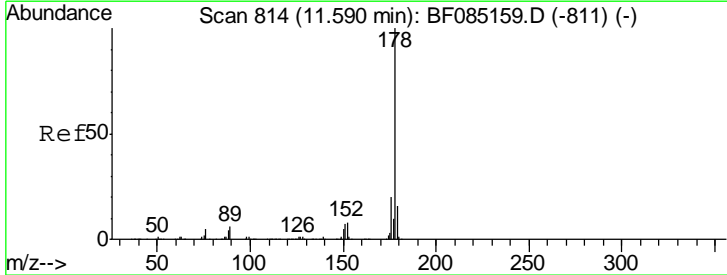
Tgt Ion	Resp	Lower	Upper
178	100		
176	20.0	16.8	25.2
179	15.6	13.1	19.7

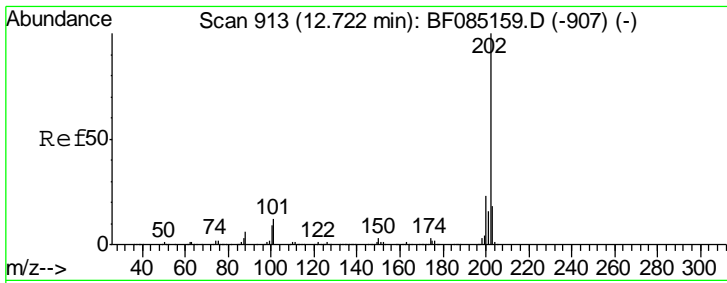
Manual Integrations
APPROVED
 Sohil
 3/15/2016 2:09:34 PM



#71
 Anthracene
 Concen: 9.55 ng
 RT: 11.52 min Scan# 808
 Delta R.T. -0.07 min
 Lab File: BF085448.D
 Acq: 15 Mar 2016 1:36

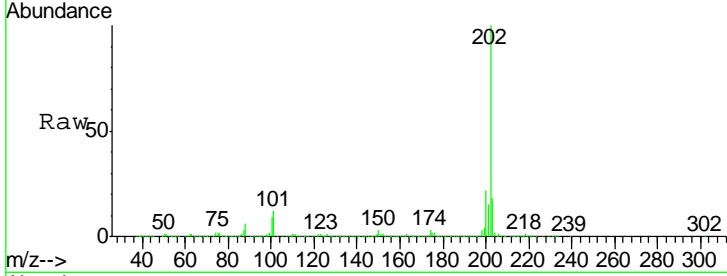
Tgt Ion	Resp	Lower	Upper
178	100		
176	18.9	15.9	23.9
179	15.5	12.5	18.7





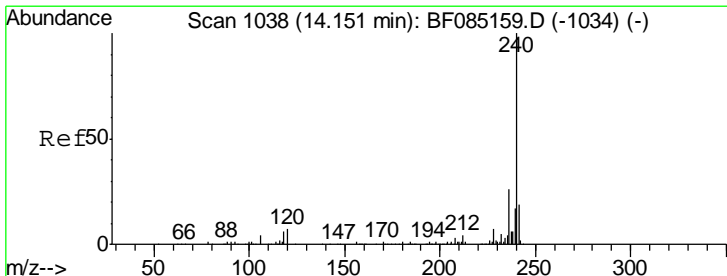
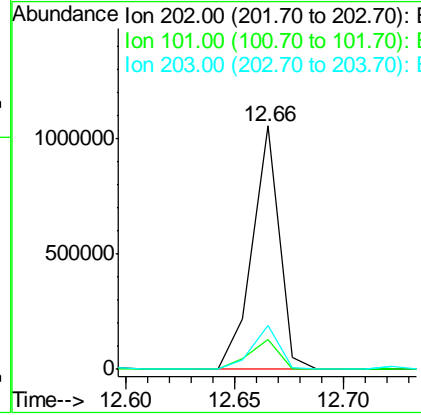
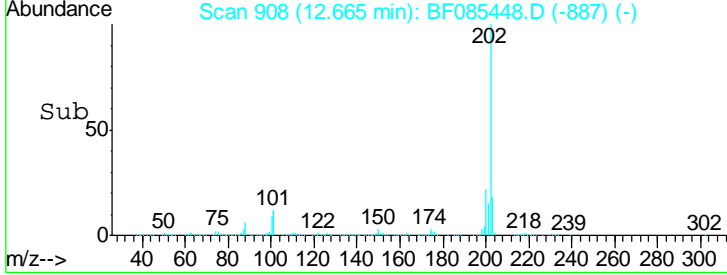
#74
 Fluoranthene
 Concen: 42.59 ng
 RT: 12.66 min Scan# 908
 Delta R.T. -0.06 min
 Lab File: BF085448.D
 Acq: 15 Mar 2016 1:36

Instrument :
 BNA_F
ClientSampled :
 W170TH-SB-18-COMP(0.5-1.5)

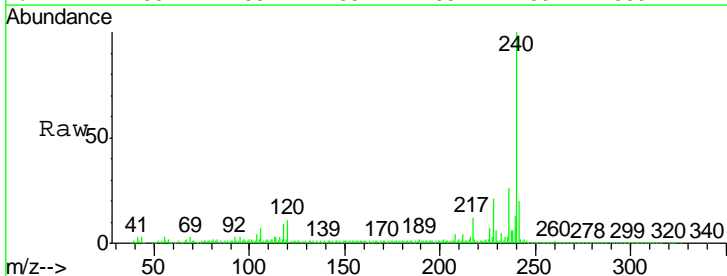


Tgt Ion	Resp	Lower	Upper
202	910160		
101	12.0	0.0	31.8
203	18.3	0.0	38.4

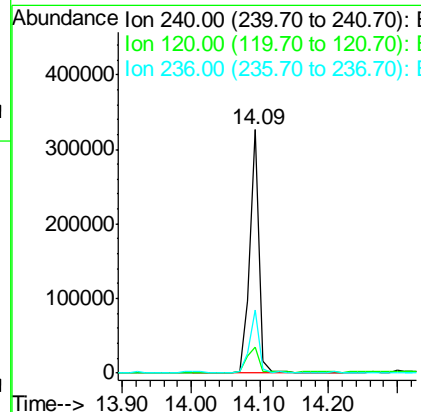
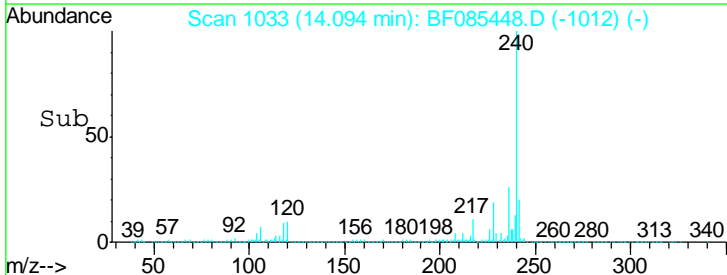
Manual Integrations
APPROVED
 Sohil
 3/15/2016 2:09:34 PM

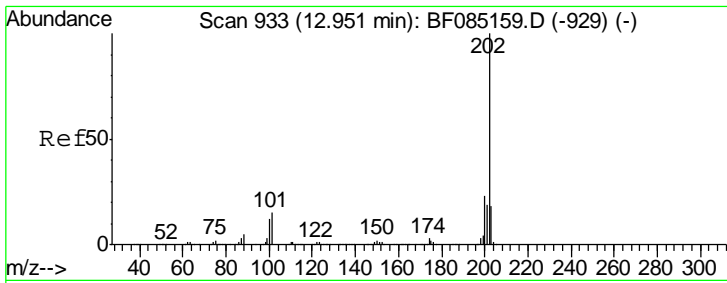


#75
 Chrysene-d12
 Concen: 20.00 ng
 RT: 14.09 min Scan# 1033
 Delta R.T. -0.06 min
 Lab File: BF085448.D
 Acq: 15 Mar 2016 1:36



Tgt Ion	Resp	Lower	Upper
240	307380		
120	10.6	5.3	7.9#
236	26.2	20.7	31.1



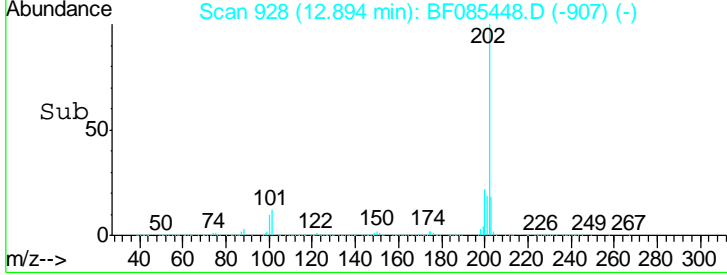
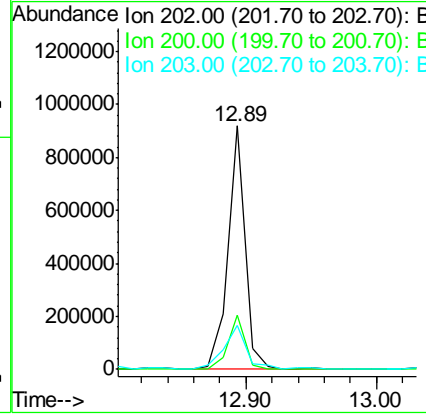
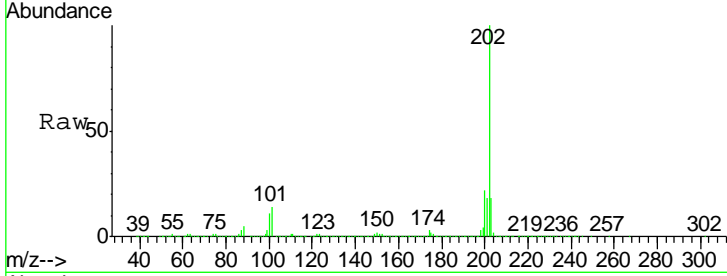


#77
 Pyrene
 Concen: 36.53 ng
 RT: 12.89 min Scan# 928
 Delta R.T. -0.06 min
 Lab File: BF085448.D
 Acq: 15 Mar 2016 1:36

Instrument :
 BNA_F
ClientSampled :
 W170TH-SB-18-COMP(0.5-1.5)

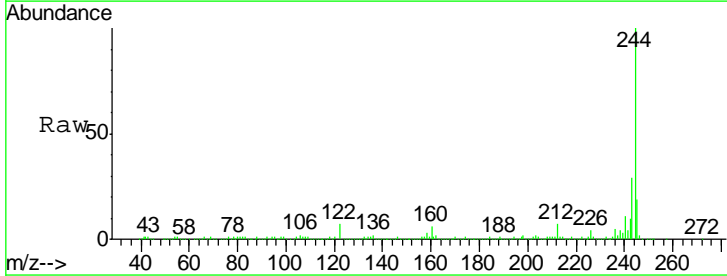
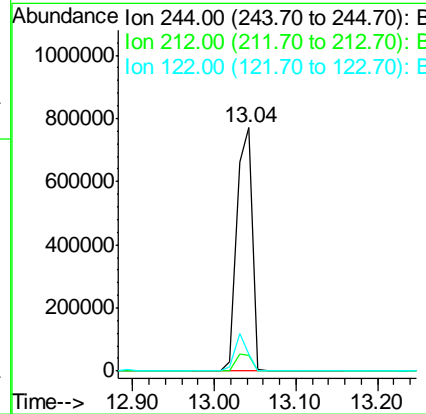
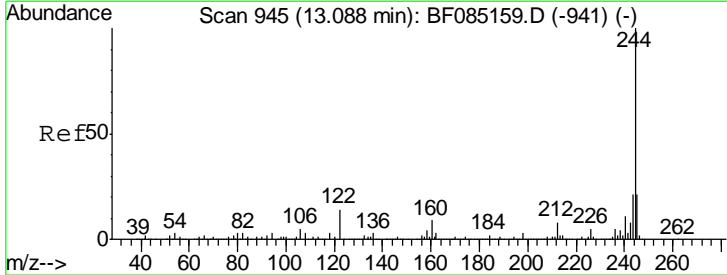
Tgt Ion	Resp	Lower	Upper
202	100		
200	22.1	18.2	27.4
203	18.2	14.7	22.1

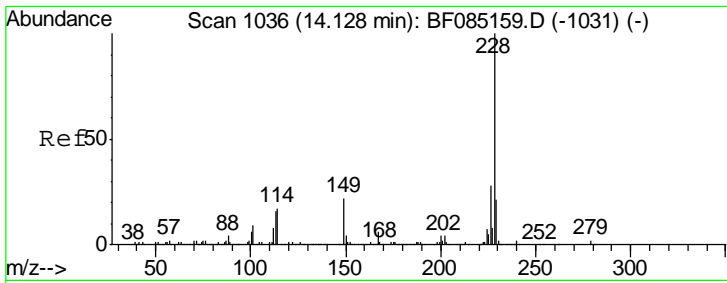
Manual Integrations
APPROVED
 Sohil
 3/15/2016 2:09:34 PM



#78
 Terphenyl-d14
 Concen: 76.35 ng
 RT: 13.04 min Scan# 941
 Delta R.T. -0.05 min
 Lab File: BF085448.D
 Acq: 15 Mar 2016 1:36

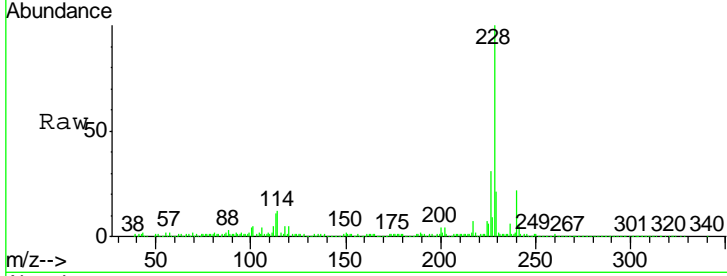
Tgt Ion	Resp	Lower	Upper
244	100		
212	6.7	6.4	9.6
122	6.9	11.4	17.2#





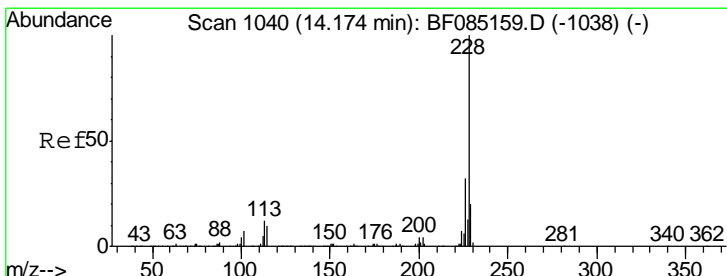
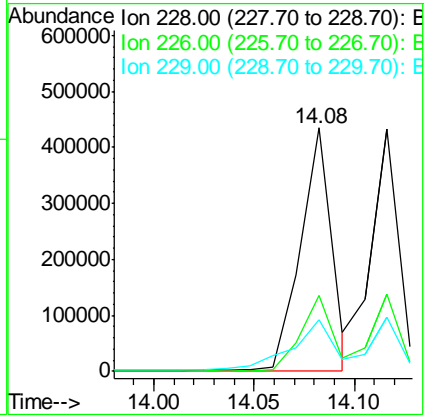
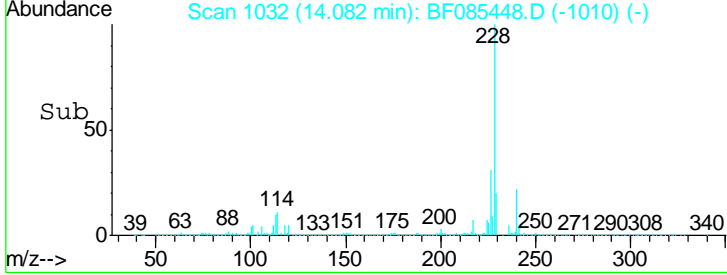
#80
 Benzo(a)anthracene
 Concen: 25.82 ng m
 RT: 14.08 min Scan# 1032
 Delta R.T. -0.05 min
 Lab File: BF085448.D
 Acq: 15 Mar 2016 1:36

Instrument :
 BNA_F
 ClientSampled :
 W170TH-SB-18-COMP(0.5-1.5)

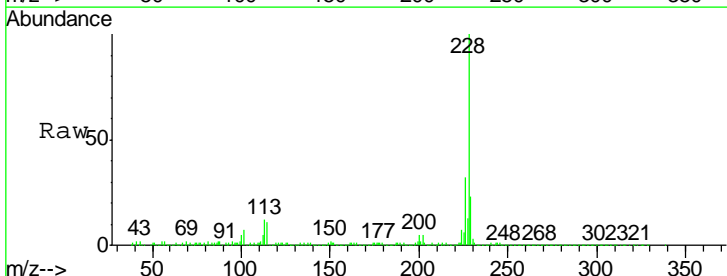


Tgt Ion	Resp	Lower	Upper
228	100		
226	31.2	22.8	34.2
229	21.0	16.6	24.8

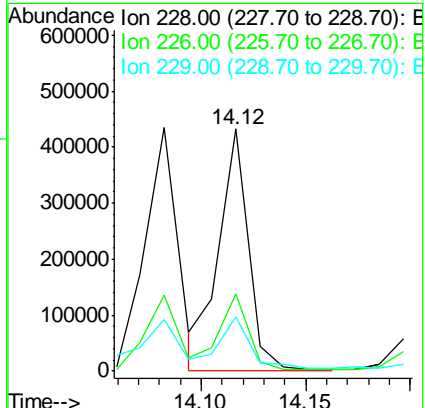
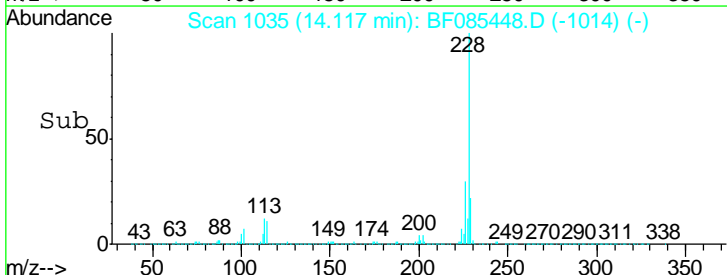
Manual Integrations
 APPROVED
 Sohil
 3/15/2016 2:09:34 PM

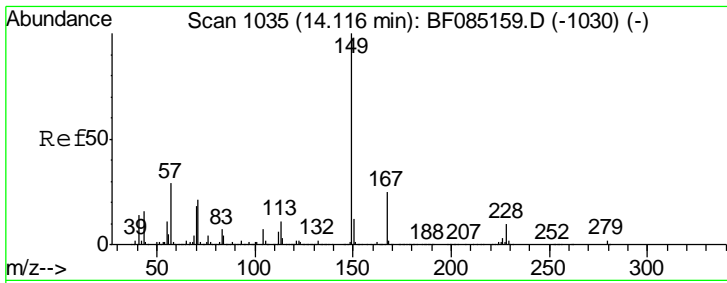


#82
 Chrysene
 Concen: 24.96 ng m
 RT: 14.12 min Scan# 1035
 Delta R.T. -0.06 min
 Lab File: BF085448.D
 Acq: 15 Mar 2016 1:36



Tgt Ion	Resp	Lower	Upper
228	100		
226	31.8	25.2	37.8
229	22.6	16.0	24.0



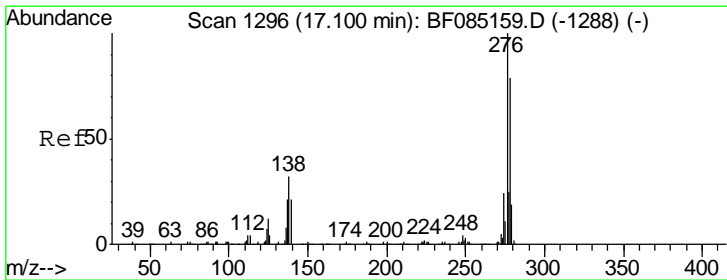
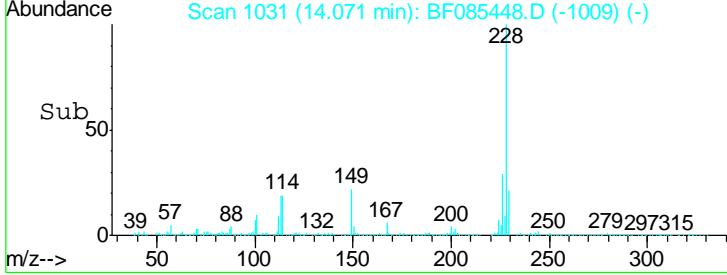
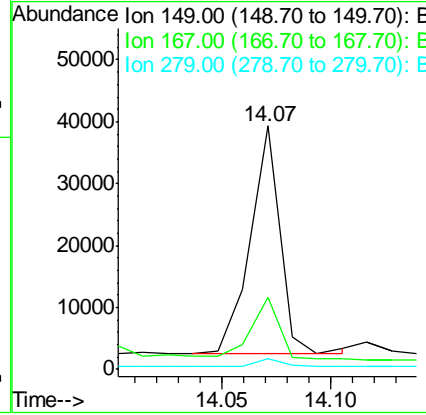
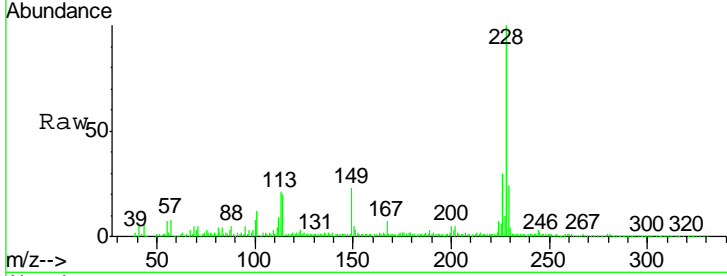


#83
 Bis(2-ethylhexyl)phthalate
 Concen: 2.55 ng
 RT: 14.07 min Scan# 1031
 Delta R.T. -0.05 min
 Lab File: BF085448.D
 Acq: 15 Mar 2016 1:36

Instrument :
 BNA_F
 ClientSampled :
 W170TH-SB-18-COMP(0.5-1.5)

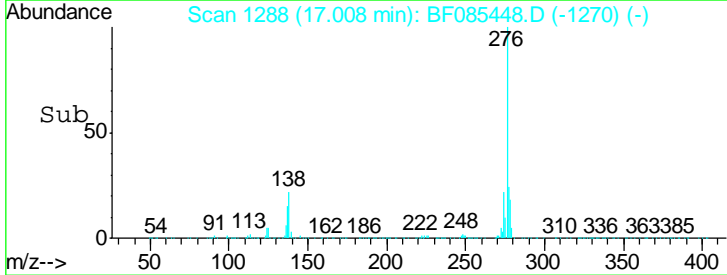
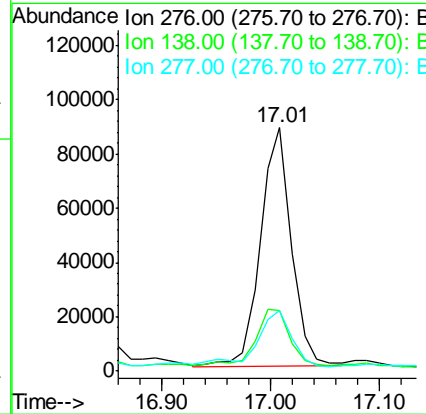
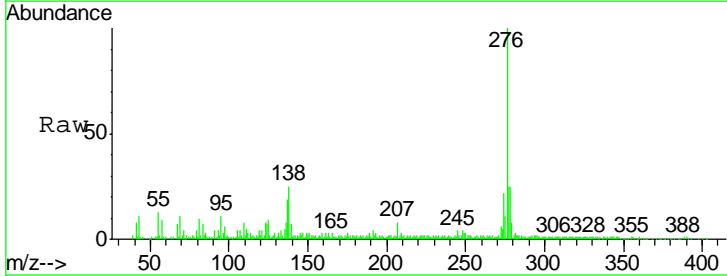
Tgt Ion	Resp	Lower	Upper
149	100		
167	29.5	20.3	30.5
279	4.1	1.9	2.9#

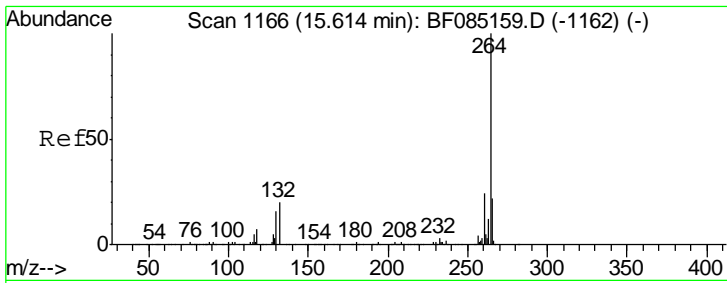
Manual Integrations
APPROVED
 Sohil
 3/15/2016 2:09:34 PM



#85
 Indeno(1,2,3-cd)pyrene
 Concen: 13.17 ng
 RT: 17.01 min Scan# 1288
 Delta R.T. -0.09 min
 Lab File: BF085448.D
 Acq: 15 Mar 2016 1:36

Tgt Ion	Resp	Lower	Upper
276	100		
138	25.9	26.4	39.6#
277	26.2	20.2	30.2



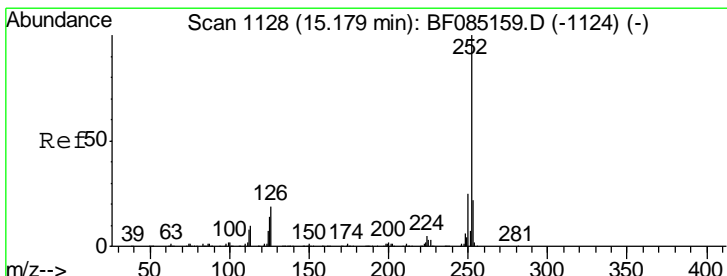
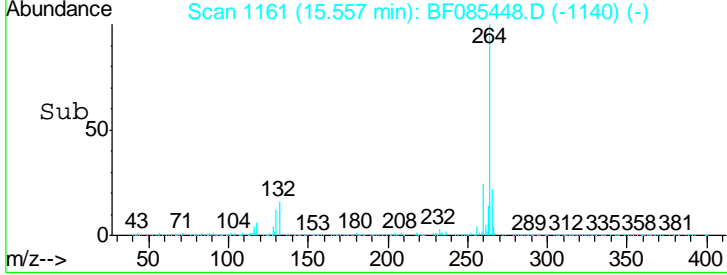
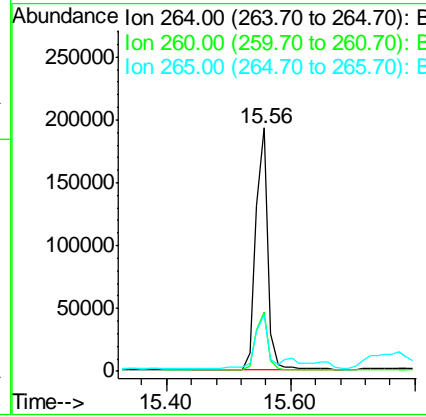
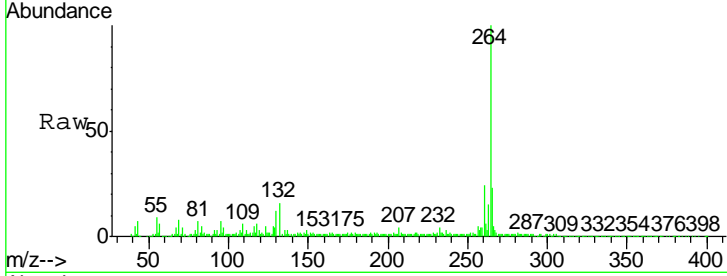


#86
 Perylene-d12
 Concen: 20.00 ng
 RT: 15.56 min Scan# 1161
 Delta R.T. -0.06 min
 Lab File: BF085448.D
 Acq: 15 Mar 2016 1:36

Instrument :
 BNA_F
ClientSampled :
 W170TH-SB-18-COMP(0.5-1.5)

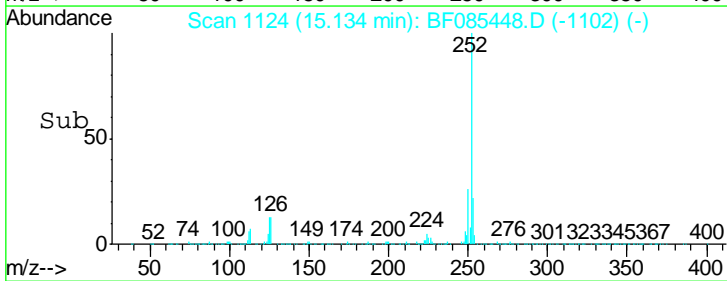
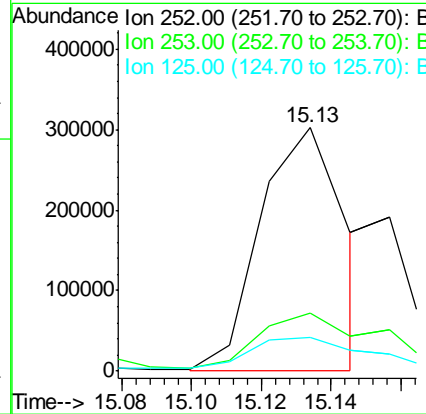
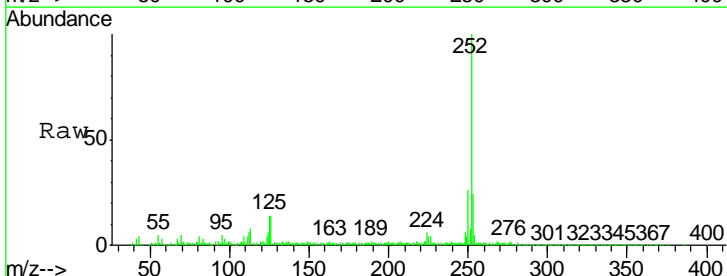
Tgt Ion	Resp	Lower	Upper
264	100		
260	24.4	19.2	28.8
265	23.2	17.3	25.9

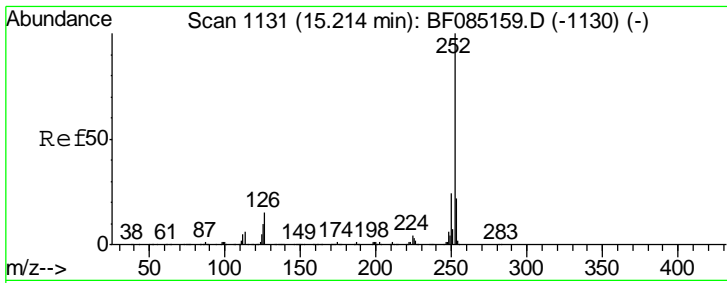
Manual Integrations
APPROVED
 Sohil
 3/15/2016 2:09:34 PM



#87
 Benzo(b)fluoranthene
 Concen: 29.24 ng m
 RT: 15.13 min Scan# 1124
 Delta R.T. -0.05 min
 Lab File: BF085448.D
 Acq: 15 Mar 2016 1:36

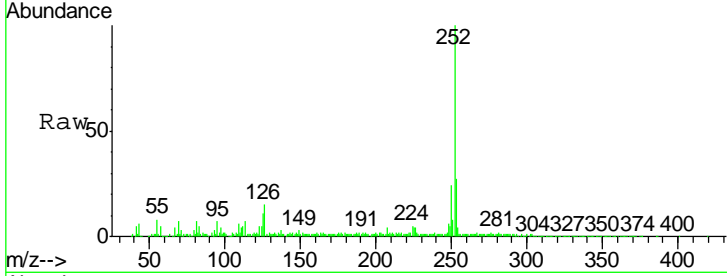
Tgt Ion	Resp	Lower	Upper
252	100		
253	23.9	17.8	26.6
125	14.1	11.3	16.9





#88
 Benzo(k)fluoranthene
 Concen: 10.88 ng m
 RT: 15.16 min Scan# 1126
 Delta R.T. -0.06 min
 Lab File: BF085448.D
 Acq: 15 Mar 2016 1:36

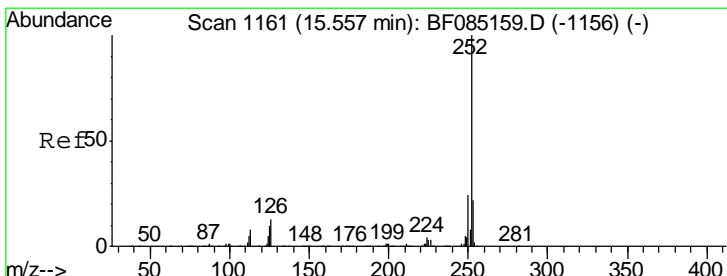
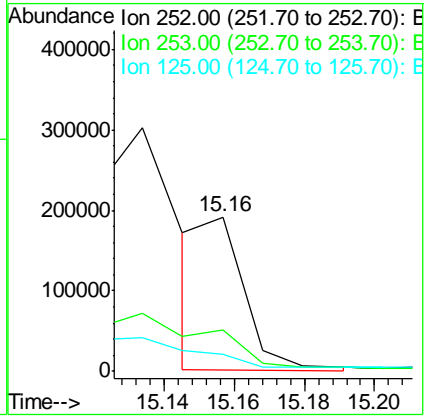
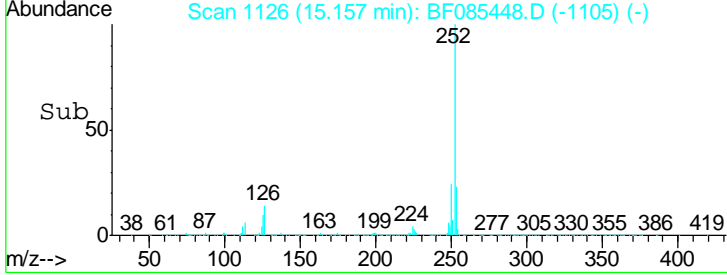
Instrument :
 BNA_F
Client Sampled :
 W170TH-SB-18-COMP(0.5-1.5)



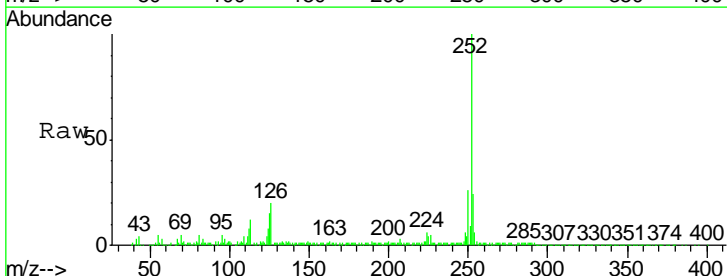
Tgt Ion: 252 Resp: 153055

Ion	Ratio	Lower	Upper
252	100		
253	27.2	17.8	26.6#
125	11.3	10.4	15.6

Manual Integrations
APPROVED
 Sohil
 3/15/2016 2:09:34 PM

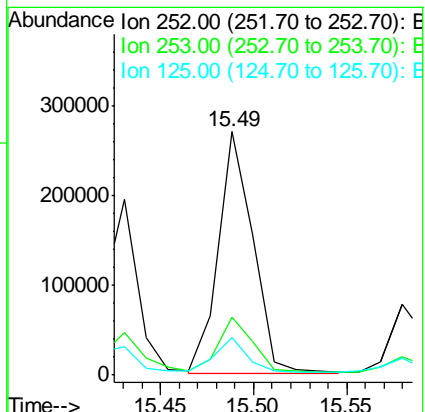
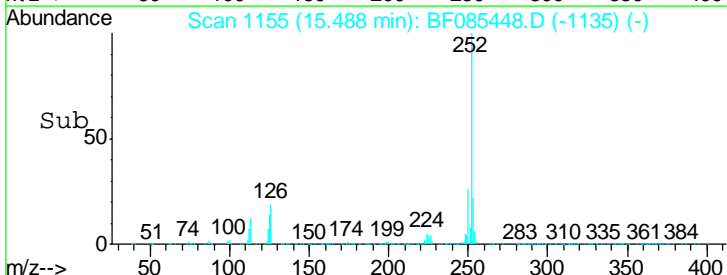


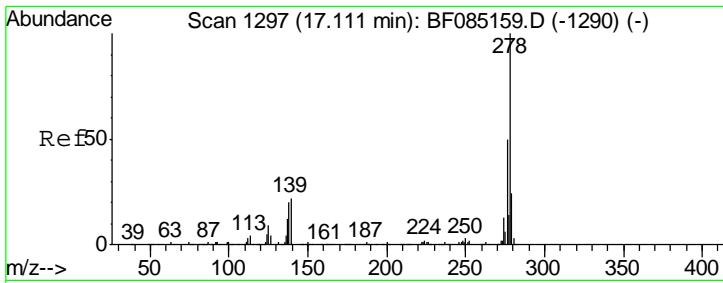
#89
 Benzo(a)pyrene
 Concen: 23.95 ng
 RT: 15.49 min Scan# 1155
 Delta R.T. -0.07 min
 Lab File: BF085448.D
 Acq: 15 Mar 2016 1:36



Tgt Ion: 252 Resp: 346206

Ion	Ratio	Lower	Upper
252	100		
253	23.7	17.4	26.0
125	15.3	8.2	12.4#



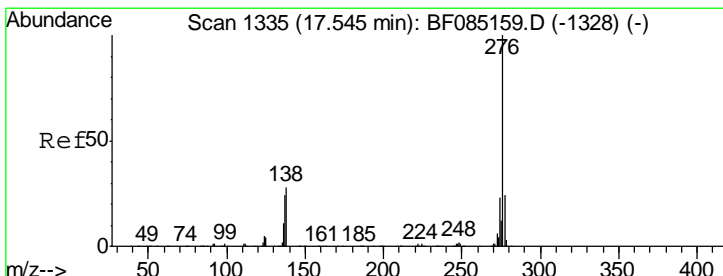
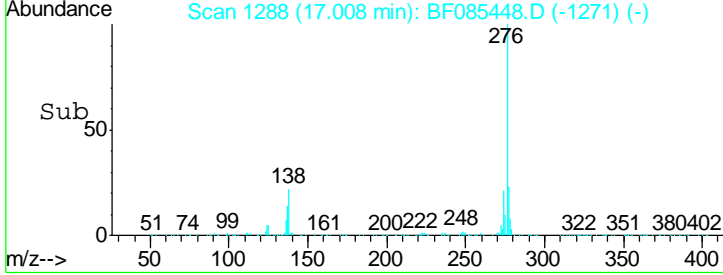
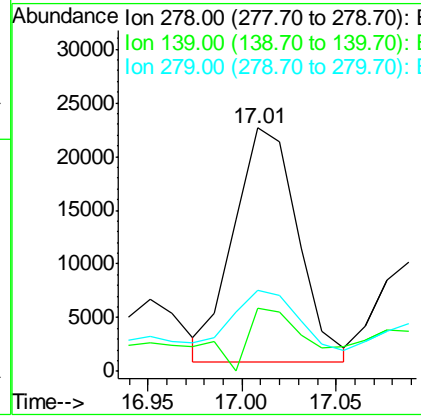
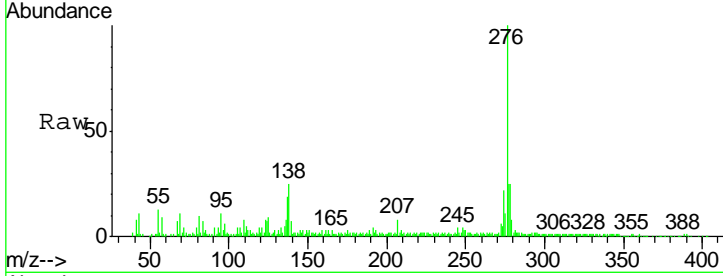


#90
 Dibenzo(a,h)anthracene
 Concen: 4.16 ng m
 RT: 17.01 min Scan# 1288
 Delta R.T. -0.10 min
 Lab File: BF085448.D
 Acq: 15 Mar 2016 1:36

Instrument :
 BNA_F
 ClientSampled :
 W170TH-SB-18-COMP(0.5-1.5)

Tgt Ion	Resp	Lower	Upper
278	51337		
139	26.0	17.3	25.9#
279	33.2	19.2	28.8#

Manual Integrations
 APPROVED
 Sohil
 3/15/2016 2:09:34 PM



#91
 Benzo(g,h,i)perylene
 Concen: 13.04 ng
 RT: 17.44 min Scan# 1326
 Delta R.T. -0.10 min
 Lab File: BF085448.D
 Acq: 15 Mar 2016 1:36

Tgt Ion	Resp	Lower	Upper
276	161733		
277	25.1	19.0	28.4
138	28.4	22.5	33.7

