

Data Path : Z:\svoasrv\HPCHEM1\BNA_F\Data\BF031522\
 Data File : BF127322.D
 Acq On : 15 Mar 2022 13:08
 Operator : CG\JU
 Sample : PB143267BS
 Misc :
 ALS Vial : 4 Sample Multiplier: 1

Instrument :
 BNA_F
 ClientSampleId :
 PB143267BS

Quant Time: Mar 15 14:22:45 2022
 Quant Method : Z:\svoasrv\HPCHEM1\BNA_F\Methods\8270-BF031022.M
 Quant Title : ASP BNA STANDARDS FOR 5 POINT CALIBRATION
 QLast Update : Thu Mar 10 16:51:53 2022
 Response via : Initial Calibration

Compound	R.T.	QIon	Response	Conc	Units	Dev(Min)	
Internal Standards							
1) 1,4-Dichlorobenzene-d4	6.869	152	136821	20.000	ng	0.00	
21) Naphthalene-d8	8.151	136	502386	20.000	ng	# 0.00	
39) Acenaphthene-d10	9.916	164	282228	20.000	ng	0.00	
64) Phenanthrene-d10	11.404	188	484107	20.000	ng	# 0.00	
76) Chrysene-d12	14.051	240	325994	20.000	ng	# 0.00	
86) Perylene-d12	15.533	264	242935	20.000	ng	0.00	
System Monitoring Compounds							
5) 2-Fluorophenol	5.510	112	965304	113.417	ng	0.02	
7) Phenol-d6	6.510	99	1309374	111.833	ng	0.00	
23) Nitrobenzene-d5	7.445	82	929635	76.420	ng	0.00	
42) 2,4,6-Tribromophenol	10.710	330	342087	112.597	ng	0.00	
45) 2-Fluorobiphenyl	9.233	172	1496266	74.954	ng	0.00	
79) Terphenyl-d14	12.992	244	1582201	83.574	ng	0.00	
Target Compounds							
2) 1,4-Dioxane	2.799	88	130266	29.518	ng	# 84	
3) Pyridine	3.546	79	350153	29.817	ng	# 83	
4) n-Nitrosodimethylamine	3.516	42	245564	37.741	ng	# 69	
6) Aniline	6.540	93	507131	36.244	ng	97	
8) 2-Chlorophenol	6.657	128	385484	43.781	ng	93	
9) Benzaldehyde	6.428	77	256942	42.574	ng	96	
10) Phenol	6.528	94	515662	40.093	ng	# 68	
11) bis(2-Chloroethyl)ether	6.610	93	412837	43.223	ng	91	
12) 1,3-Dichlorobenzene	6.810	146	391752	39.637	ng	99	
13) 1,4-Dichlorobenzene	6.887	146	398991	40.241	ng	99	
14) 1,2-Dichlorobenzene	7.039	146	382948	41.037	ng	97	
15) Benzyl Alcohol	7.016	79	376291	42.878	ng	93	
16) 2,2'-oxybis(1-Chloropr...	7.139	45	726317	40.522	ng	96	
17) 2-Methylphenol	7.128	107	323435	43.210	ng	# 89	
18) Hexachloroethane	7.375	117	157623	41.384	ng	# 87	
19) n-Nitroso-di-n-propyla...	7.292	70	303488	41.537	ng	91	
20) 3+4-Methylphenols	7.281	107	363283	37.424	ng	93	
22) Acetophenone	7.287	105	512527	37.261	ng	# 84	
24) Nitrobenzene	7.463	77	469636	40.817	ng	98	
25) Isophorone	7.698	82	882802	45.131	ng	# 98	
26) 2-Nitrophenol	7.775	139	200785	42.139	ng	# 83	
27) 2,4-Dimethylphenol	7.810	122	351408	49.129	ng	94	
28) bis(2-Chloroethoxy)met...	7.904	93	509250	41.088	ng	99	
29) 2,4-Dichlorophenol	8.016	162	332903	40.640	ng	98	
30) 1,2,4-Trichlorobenzene	8.092	180	373570	40.002	ng	98	
31) Naphthalene	8.175	128	1076492	40.169	ng	99	
32) Benzoic acid	7.963	122	200888	41.454	ng	90	
33) 4-Chloroaniline	8.228	127	240433	23.146	ng	93	
34) Hexachlorobutadiene	8.286	225	242515	38.943	ng	97	
35) Caprolactam	8.616	113	51982	21.242	ng	# 76	
36) 4-Chloro-3-methylphenol	8.716	107	357506	40.267	ng	99	
37) 2-Methylnaphthalene	8.869	142	701211	40.044	ng	97	
38) 1-Methylnaphthalene	8.969	142	666193	39.573	ng	100	
40) 1,2,4,5-Tetrachloroben...	9.033	216	362577	40.582	ng	# 94	
41) Hexachlorocyclopentadiene	9.016	237	369595	97.716	ng	96	
43) 2,4,6-Trichlorophenol	9.151	196	227046	40.264	ng	97	

Data Path : Z:\svoasrv\HPCHEM1\BNA_F\Data\BF031522\
 Data File : BF127322.D
 Acq On : 15 Mar 2022 13:08
 Operator : CG\JU
 Sample : PB143267BS
 Misc :
 ALS Vial : 4 Sample Multiplier: 1

Instrument :
 BNA_F
 ClientSampleId :
 PB143267BS

Quant Time: Mar 15 14:22:45 2022
 Quant Method : Z:\svoasrv\HPCHEM1\BNA_F\Methods\8270-BF031022.M
 Quant Title : ASP BNA STANDARDS FOR 5 POINT CALIBRATION
 QLast Update : Thu Mar 10 16:51:53 2022
 Response via : Initial Calibration

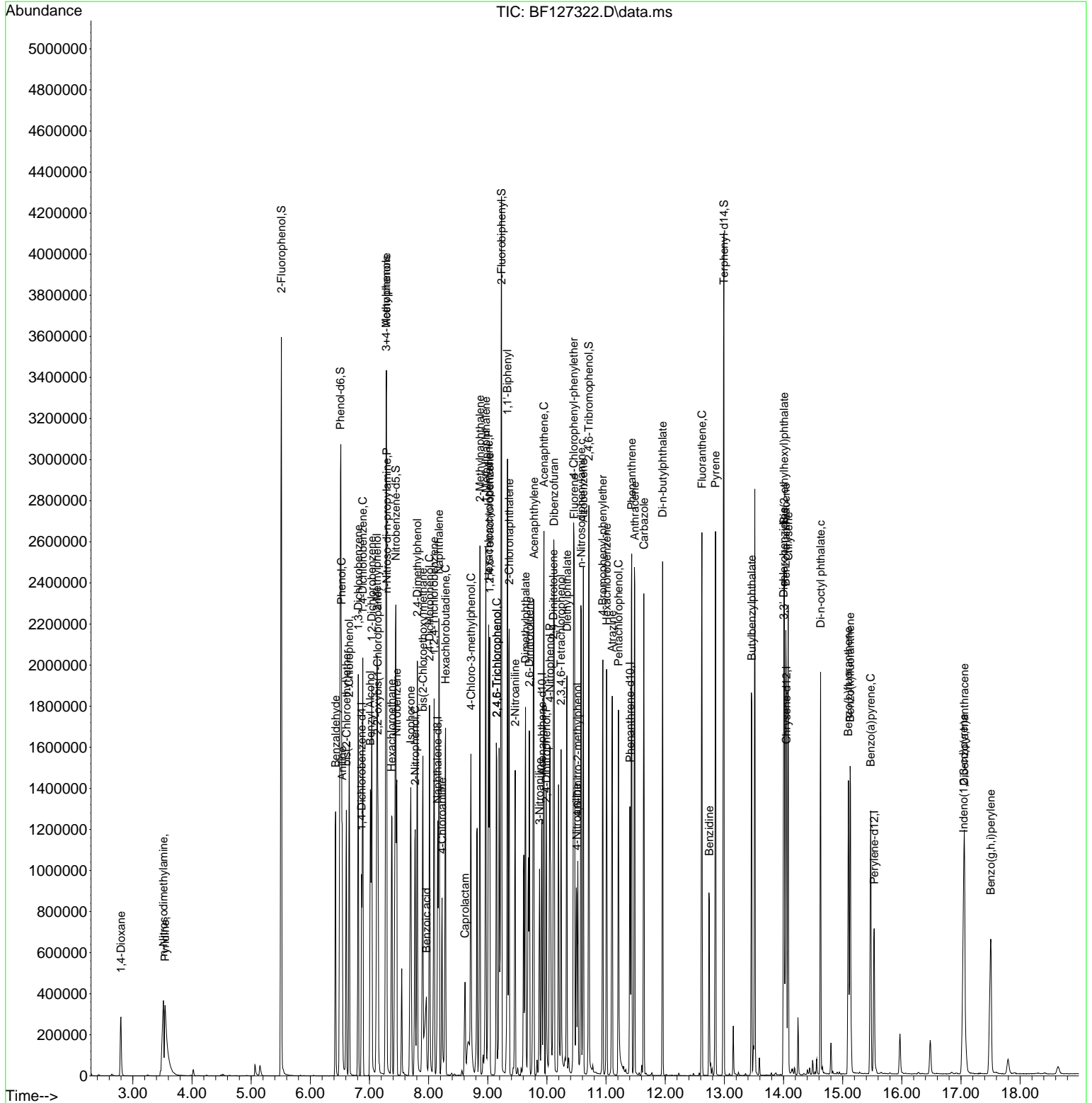
Compound	R.T.	QIon	Response	Conc	Units	Dev(Min)
44) 2,4,5-Trichlorophenol	9.151	196	227046	37.938	ng	92
46) 1,1'-Biphenyl	9.333	154	853736	40.080	ng	99
47) 2-Chloronaphthalene	9.363	162	666646	40.205	ng	98
48) 2-Nitroaniline	9.463	65	255363	40.027	ng	91
49) Acenaphthylene	9.780	152	1052563	41.480	ng	98
50) Dimethylphthalate	9.639	163	793404	39.232	ng	# 99
51) 2,6-Dinitrotoluene	9.704	165	173552	42.424	ng	# 88
52) Acenaphthene	9.951	154	588166	38.885	ng	95
53) 3-Nitroaniline	9.875	138	125624	28.180	ng	96
54) 2,4-Dinitrophenol	9.992	184	172749	76.789	ng	# 85
55) Dibenzofuran	10.122	168	876855	37.315	ng	99
56) 4-Nitrophenol	10.051	139	218892	80.784	ng	# 74
57) 2,4-Dinitrotoluene	10.110	165	215505	40.039	ng	# 91
58) Fluorene	10.463	166	689074	37.817	ng	100
59) 2,3,4,6-Tetrachlorophenol	10.239	232	199081	40.029	ng	# 78
60) Diethylphthalate	10.339	149	707417	38.349	ng	96
61) 4-Chlorophenyl-phenylether	10.451	204	370339	37.504	ng	91
62) 4-Nitroaniline	10.504	138	168885	38.017	ng	88
63) Azobenzene	10.616	77	806019	38.011	ng	90
65) 4,6-Dinitro-2-methylphthalate	10.522	198	119162	39.922	ng	86
66) n-Nitrosodiphenylamine	10.580	169	597075	39.712	ng	100
67) 4-Bromophenyl-phenylether	10.945	248	232345	39.815	ng	93
68) Hexachlorobenzene	11.010	284	258187	40.596	ng	90
69) Atrazine	11.104	200	226063	43.573	ng	94
70) Pentachlorophenol	11.210	266	233493	90.930	ng	98
71) Phenanthrene	11.433	178	991036	38.780	ng	100
72) Anthracene	11.486	178	1016437	40.162	ng	99
73) Carbazole	11.639	167	900478	37.783	ng	99
74) Di-n-butylphthalate	11.957	149	1081651	38.802	ng	100
75) Fluoranthene	12.621	202	1089094	38.115	ng	93
77) Benzidine	12.745	184	359136	43.322	ng	98
78) Pyrene	12.851	202	1107820	43.629	ng	99
80) Butylbenzylphthalate	13.463	149	414687	42.435	ng	# 89
81) Benzo(a)anthracene	14.039	228	894528	40.753	ng	99
82) 3,3'-Dichlorobenzidine	14.004	252	225629	33.060	ng	# 95
83) Chrysene	14.080	228	826005	40.459	ng	99
84) Bis(2-ethylhexyl)phthalate	14.010	149	539259	40.994	ng	# 99
85) Di-n-octyl phthalate	14.627	149	809652	40.665	ng	97
87) Indeno(1,2,3-cd)pyrene	17.045	276	672046	45.921	ng	# 85
88) Benzo(b)fluoranthene	15.098	252	688742	43.192	ng	# 92
89) Benzo(k)fluoranthene	15.127	252	692344	46.176	ng	# 93
90) Benzo(a)pyrene	15.474	252	649402	51.716	ng	# 93
91) Dibenzo(a,h)anthracene	17.056	278	589460	48.394	ng	# 90
92) Benzo(g,h,i)perylene	17.504	276	594593	50.045	ng	# 85

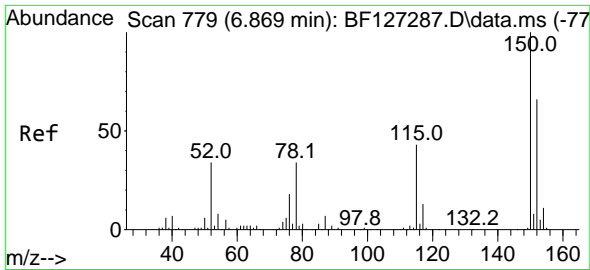
(#) = qualifier out of range (m) = manual integration (+) = signals summed

Data Path : Z:\svoasrv\HPCHEM1\BNA_F\Data\BF031522\
 Data File : BF127322.D
 Acq On : 15 Mar 2022 13:08
 Operator : CG\JU
 Sample : PB143267BS
 Misc :
 ALS Vial : 4 Sample Multiplier: 1

Instrument :
 BNA_F
 ClientSampleId :
 PB143267BS

Quant Time: Mar 15 14:22:45 2022
 Quant Method : Z:\svoasrv\HPCHEM1\BNA_F\Methods\8270-BF031022.M
 Quant Title : ASP BNA STANDARDS FOR 5 POINT CALIBRATION
 QLast Update : Thu Mar 10 16:51:53 2022
 Response via : Initial Calibration

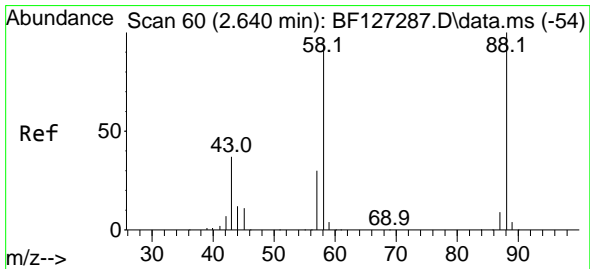
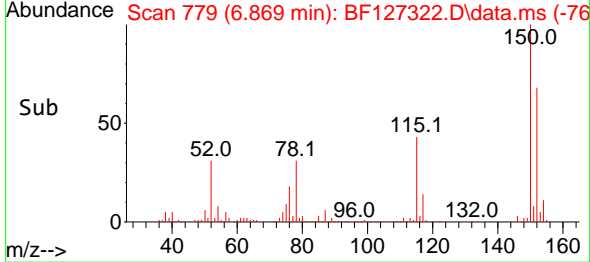
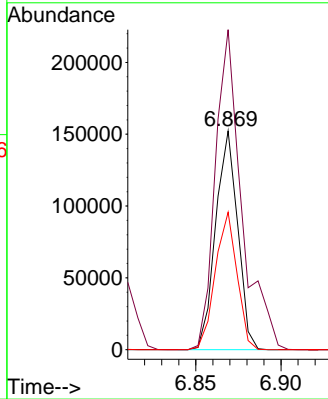
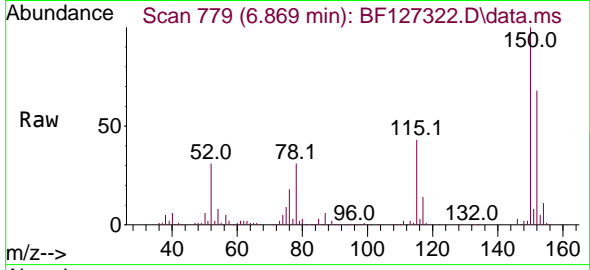




#1
 1,4-Dichlorobenzene-d4
 Concen: 20.000 ng
 RT: 6.869 min Scan# 77
 Delta R.T. -0.000 min
 Lab File: BF127322.D
 Acq: 15 Mar 2022 13:08

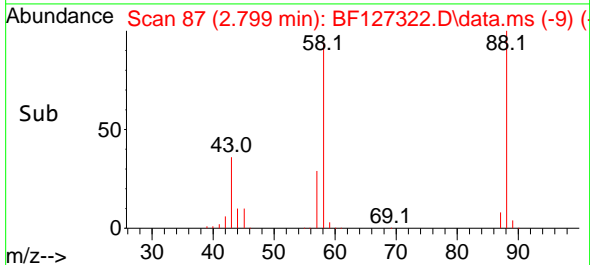
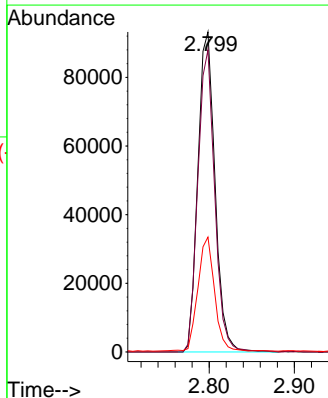
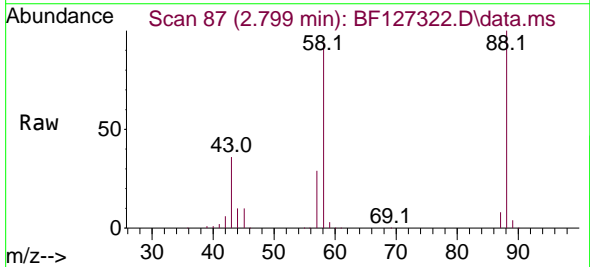
Instrument :
 BNA_F
 ClientSampleId :
 PB143267BS

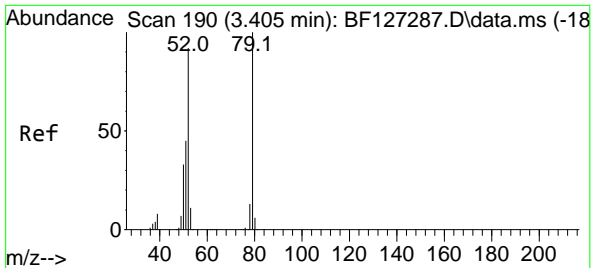
Tgt Ion:152 Resp: 136821
 Ion Ratio Lower Upper
 152 100
 150 146.3 128.1 192.1
 115 62.8 56.7 85.1



#2
 1,4-Dioxane
 Concen: 29.518 ng
 RT: 2.799 min Scan# 87
 Delta R.T. 0.159 min
 Lab File: BF127322.D
 Acq: 15 Mar 2022 13:08

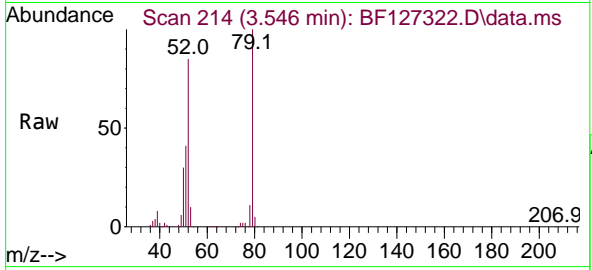
Tgt Ion: 88 Resp: 130266
 Ion Ratio Lower Upper
 88 100
 58 93.0 62.8 94.2
 43 34.7 22.3 33.5#



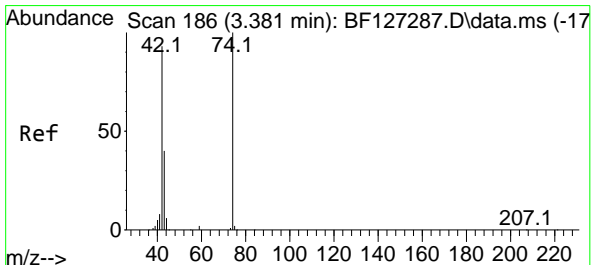
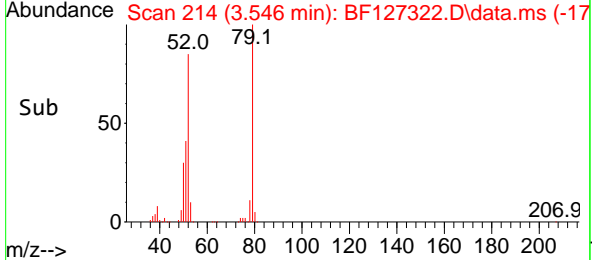
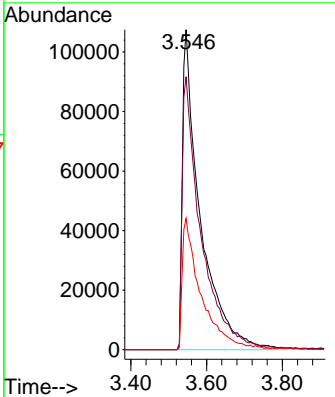


#3
 Pyridine
 Concen: 29.817 ng
 RT: 3.546 min Scan# 211
 Delta R.T. 0.141 min
 Lab File: BF127322.D
 Acq: 15 Mar 2022 13:08

Instrument : BNA_F
 ClientSampleId : PB143267BS

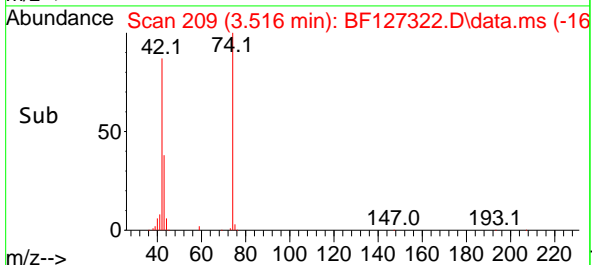
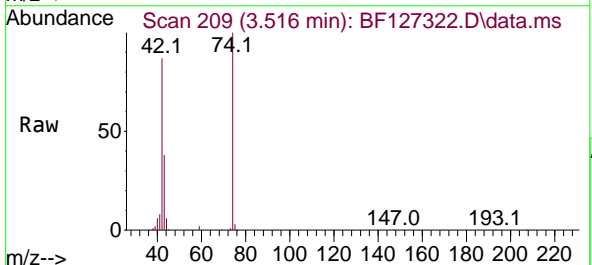
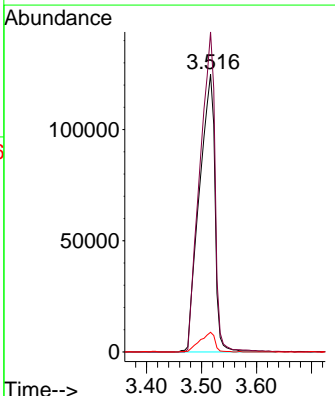


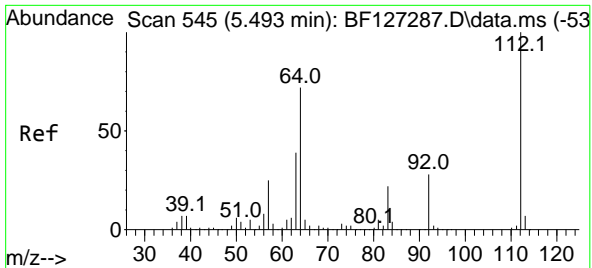
Tgt Ion: 79 Resp: 350153
 Ion Ratio Lower Upper
 79 100
 52 85.3 56.2 84.4#
 51 41.0 26.7 40.1#



#4
 n-Nitrosodimethylamine
 Concen: 37.741 ng
 RT: 3.516 min Scan# 209
 Delta R.T. 0.135 min
 Lab File: BF127322.D
 Acq: 15 Mar 2022 13:08

Tgt Ion: 42 Resp: 245564
 Ion Ratio Lower Upper
 42 100
 74 115.2 125.6 188.4#
 44 7.1 5.7 8.5



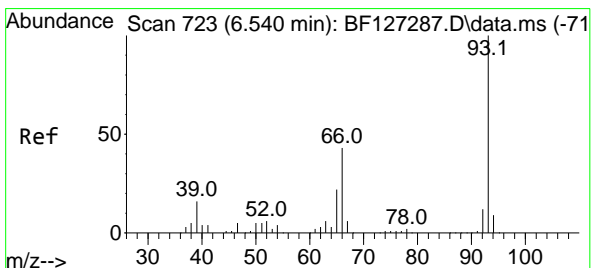
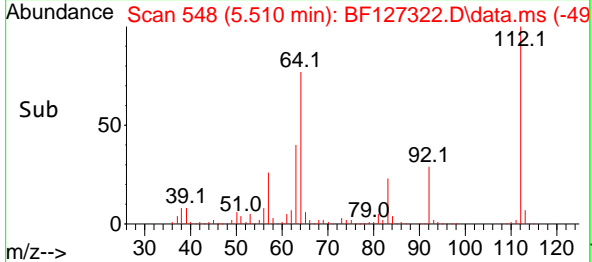
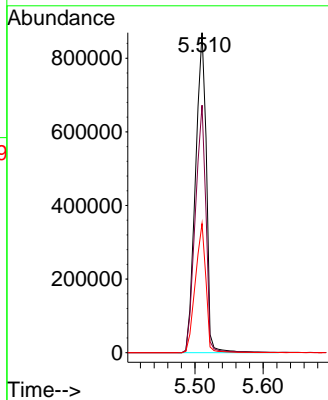
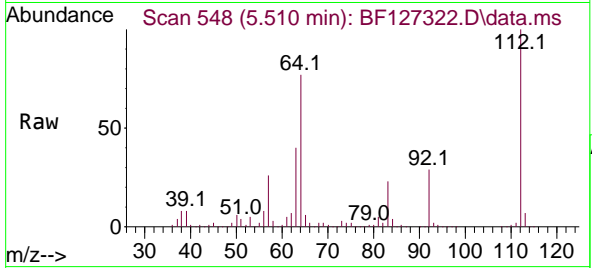


#5
 2-Fluorophenol
 Concen: 113.417 ng
 RT: 5.510 min Scan# 548
 Delta R.T. 0.018 min
 Lab File: BF127322.D
 Acq: 15 Mar 2022 13:08

Instrument :
 BNA_F
 ClientSampleId :
 PB143267BS

Tgt Ion: 112 Resp: 965304

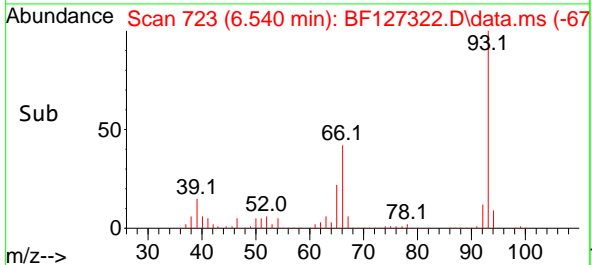
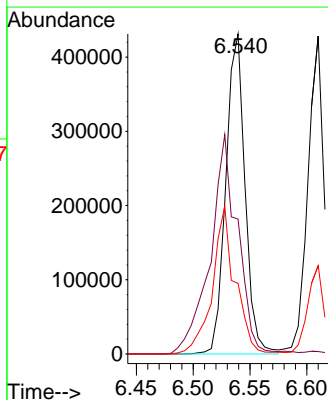
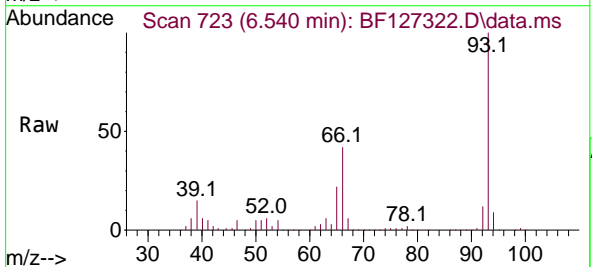
Ion	Ratio	Lower	Upper
112	100		
64	77.3	49.5	74.3#
63	40.4	23.9	35.9#

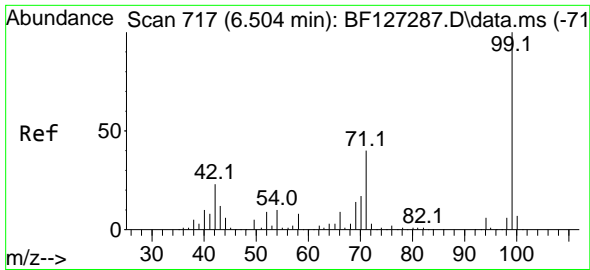


#6
 Aniline
 Concen: 36.244 ng
 RT: 6.540 min Scan# 723
 Delta R.T. -0.000 min
 Lab File: BF127322.D
 Acq: 15 Mar 2022 13:08

Tgt Ion: 93 Resp: 507131

Ion	Ratio	Lower	Upper
93	100		
66	42.1	32.2	48.4
65	22.0	16.3	24.5

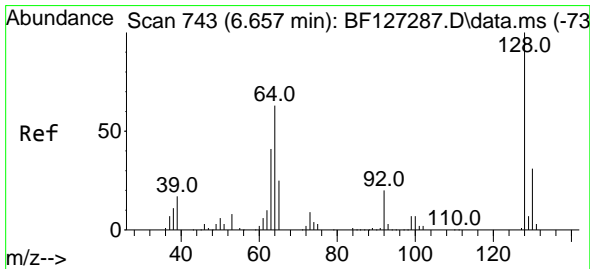
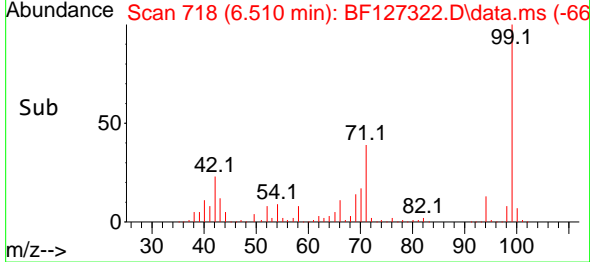
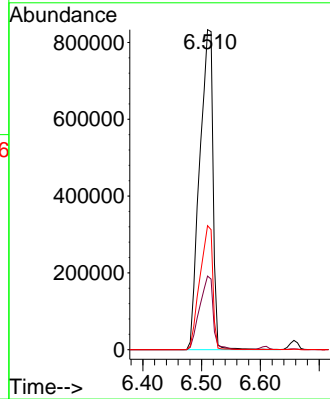
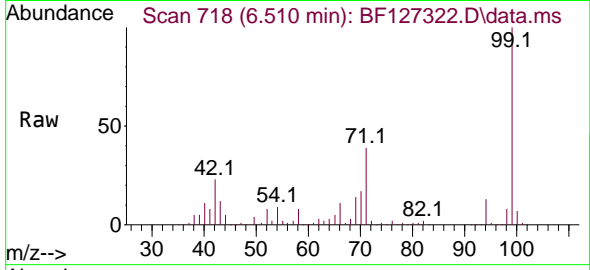




#7
 Phenol-d6
 Concen: 111.833 ng
 RT: 6.510 min Scan# 710
 Delta R.T. 0.006 min
 Lab File: BF127322.D
 Acq: 15 Mar 2022 13:08

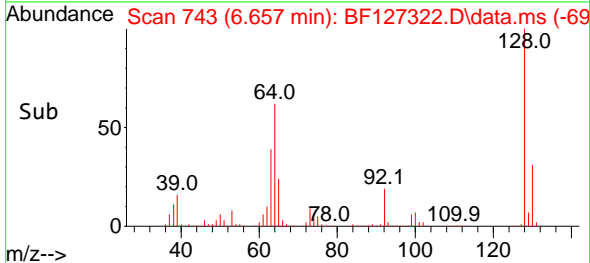
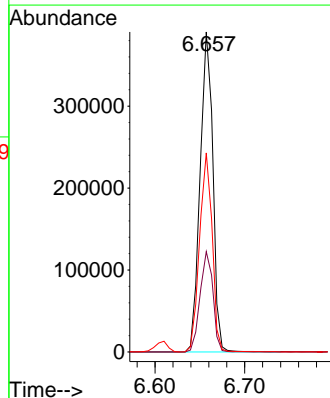
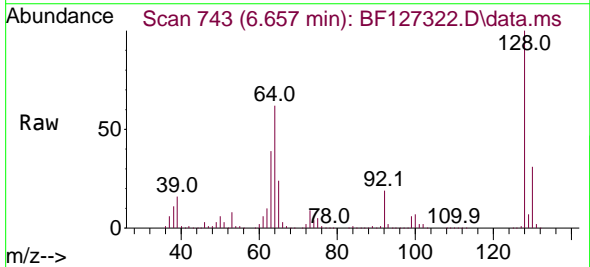
Instrument :
 BNA_F
 ClientSampleId :
 PB143267BS

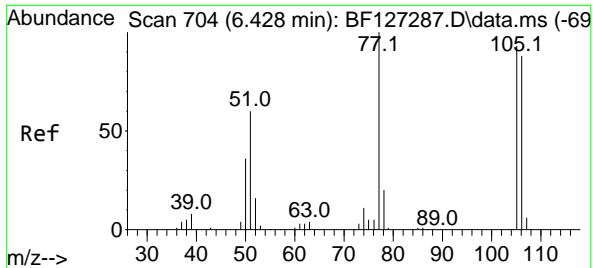
Tgt Ion: 99 Resp: 1309374
 Ion Ratio Lower Upper
 99 100
 42 23.0 14.2 21.4#
 71 38.7 24.3 36.5#



#8
 2-Chlorophenol
 Concen: 43.781 ng
 RT: 6.657 min Scan# 743
 Delta R.T. -0.000 min
 Lab File: BF127322.D
 Acq: 15 Mar 2022 13:08

Tgt Ion:128 Resp: 385484
 Ion Ratio Lower Upper
 128 100
 130 31.4 12.7 52.7
 64 62.2 35.6 75.6





#9
 Benzaldehyde
 Concen: 42.574 ng
 RT: 6.428 min Scan# 704
 Delta R.T. -0.000 min
 Lab File: BF127322.D
 Acq: 15 Mar 2022 13:08

Instrument :

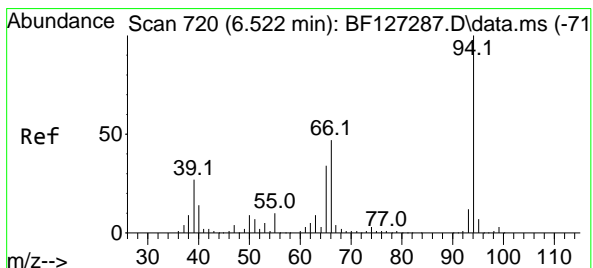
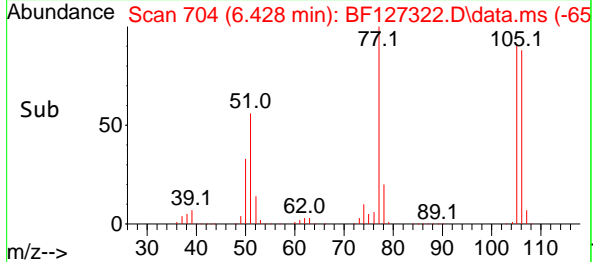
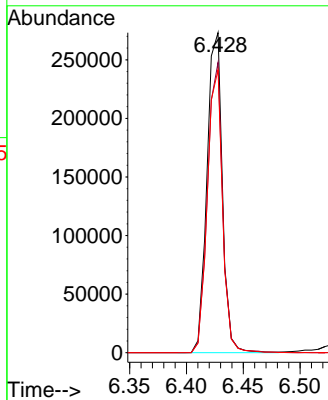
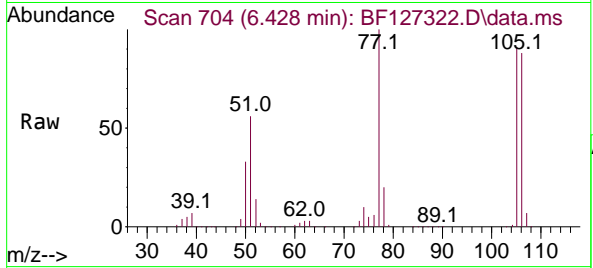
BNA_F

ClientSampleId :

PB143267BS

Tgt Ion: 77 Resp: 256942

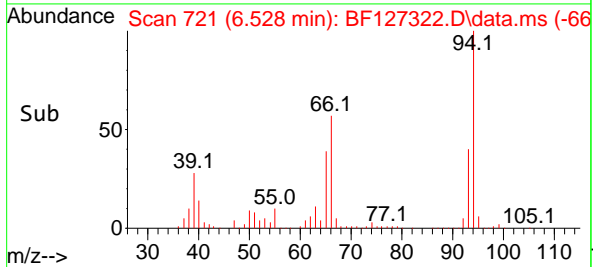
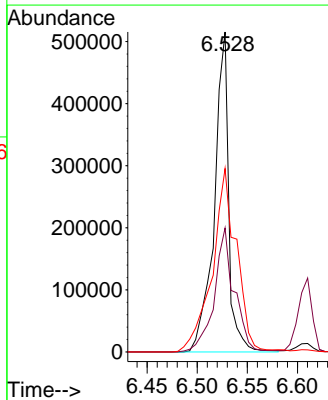
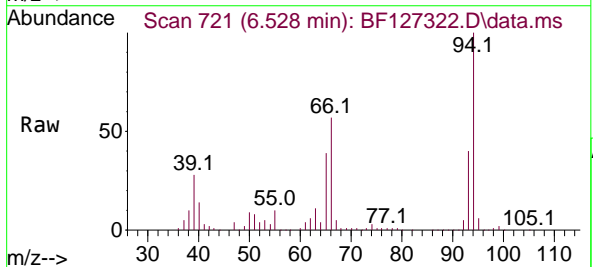
Ion	Ratio	Lower	Upper
77	100		
105	90.7	74.9	114.9
106	88.4	72.4	112.4

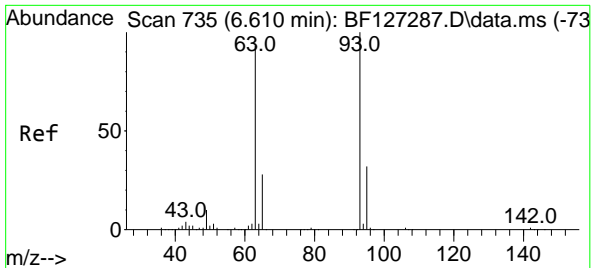


#10
 Phenol
 Concen: 40.093 ng
 RT: 6.528 min Scan# 721
 Delta R.T. 0.006 min
 Lab File: BF127322.D
 Acq: 15 Mar 2022 13:08

Tgt Ion: 94 Resp: 515662

Ion	Ratio	Lower	Upper
94	100		
65	38.7	7.2	47.2
66	57.4	14.5	54.5





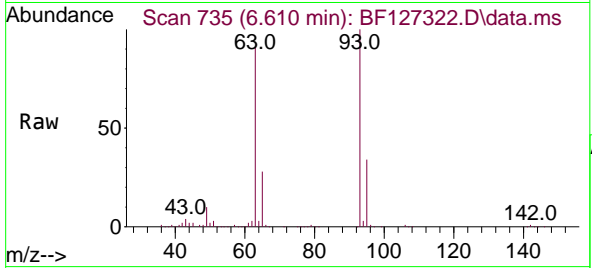
#11
 bis(2-Chloroethyl)ether
 Concen: 43.223 ng
 RT: 6.610 min Scan# 711
 Delta R.T. -0.000 min
 Lab File: BF127322.D
 Acq: 15 Mar 2022 13:08

Instrument :

BNA_F

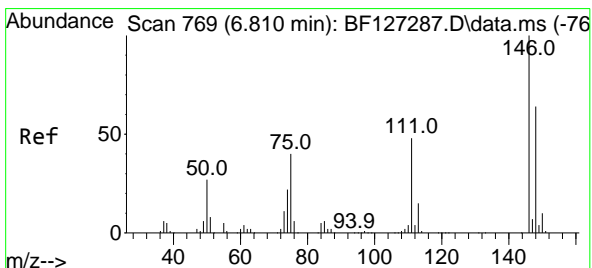
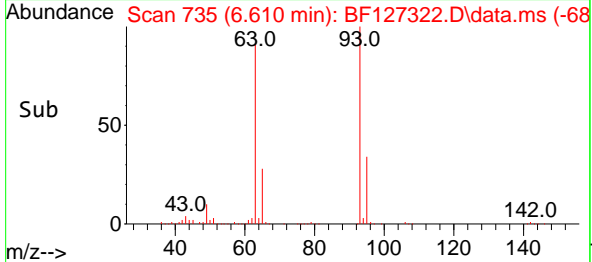
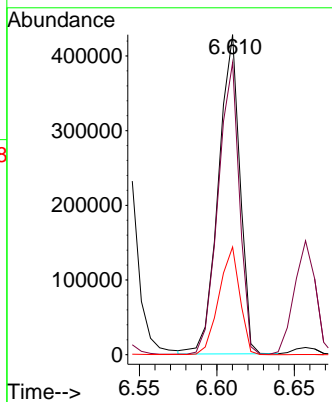
ClientSampleId :

PB143267BS



Tgt Ion: 93 Resp: 412837

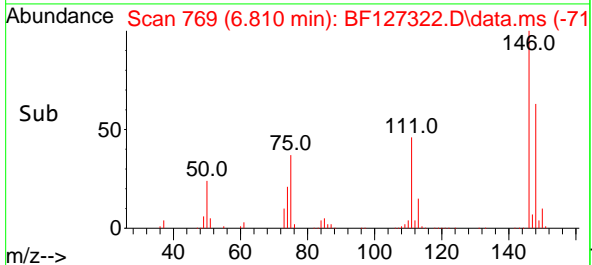
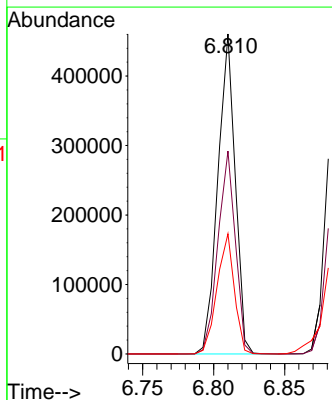
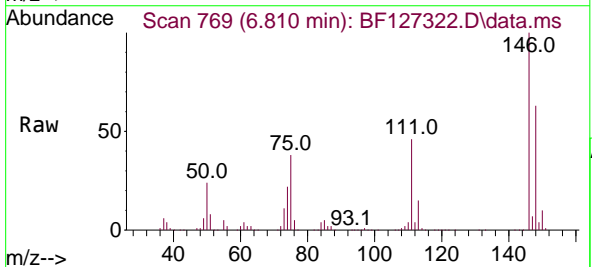
Ion	Ratio	Lower	Upper
93	100		
63	91.2	60.5	100.5
95	33.6	12.9	52.9

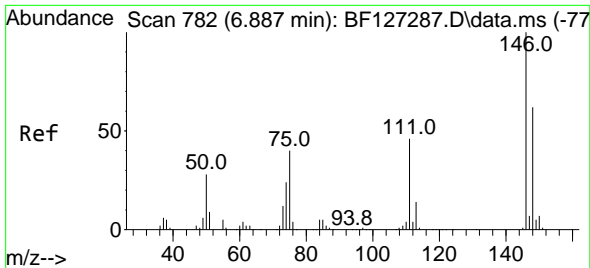


#12
 1,3-Dichlorobenzene
 Concen: 39.637 ng
 RT: 6.810 min Scan# 769
 Delta R.T. -0.000 min
 Lab File: BF127322.D
 Acq: 15 Mar 2022 13:08

Tgt Ion: 146 Resp: 391752

Ion	Ratio	Lower	Upper
146	100		
148	63.4	50.9	76.3
75	37.5	28.4	42.6

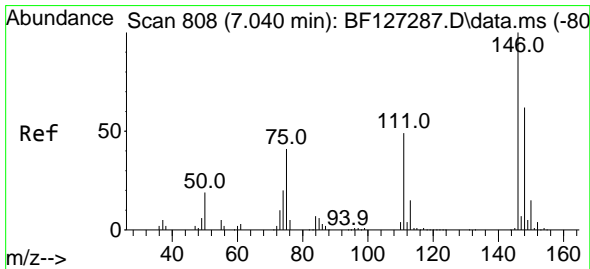
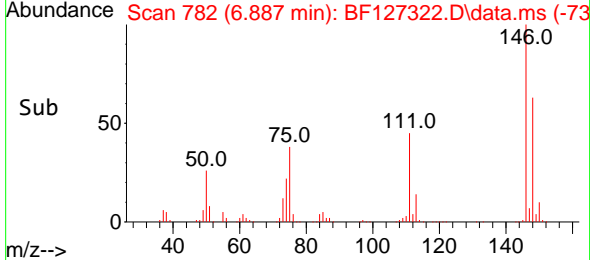
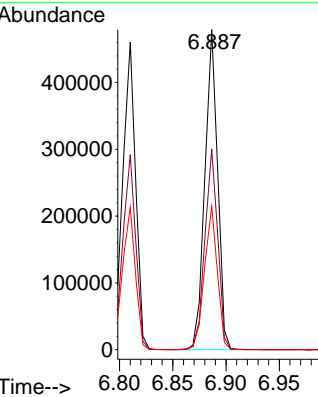
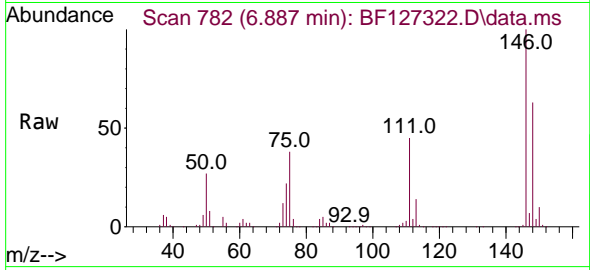




#13
 1,4-Dichlorobenzene
 Concen: 40.241 ng
 RT: 6.887 min Scan# 711
 Delta R.T. -0.000 min
 Lab File: BF127322.D
 Acq: 15 Mar 2022 13:08

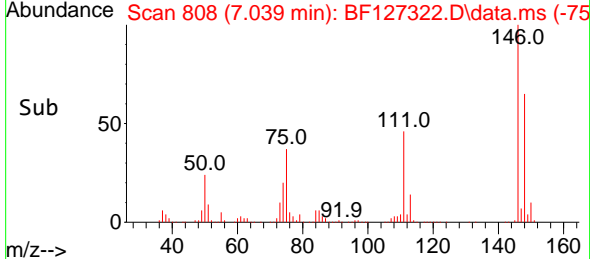
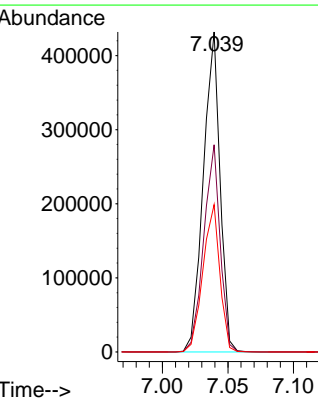
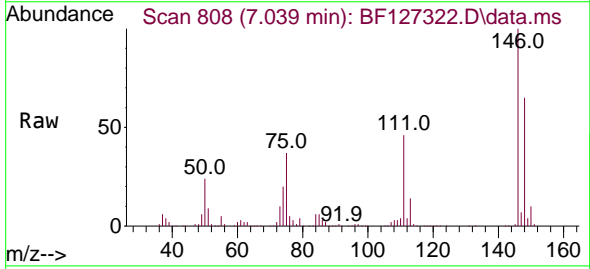
Instrument :
 BNA_F
 ClientSampleId :
 PB143267BS

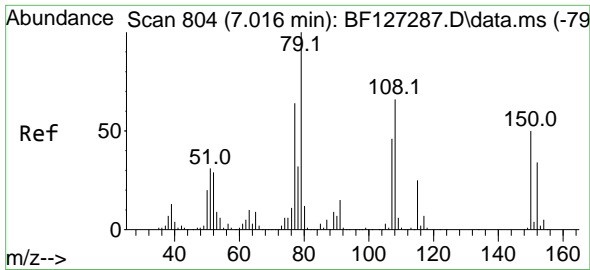
Tgt Ion:146 Resp: 398991
 Ion Ratio Lower Upper
 146 100
 148 62.7 49.8 74.6
 111 44.7 36.1 54.1



#14
 1,2-Dichlorobenzene
 Concen: 41.037 ng
 RT: 7.039 min Scan# 808
 Delta R.T. -0.000 min
 Lab File: BF127322.D
 Acq: 15 Mar 2022 13:08

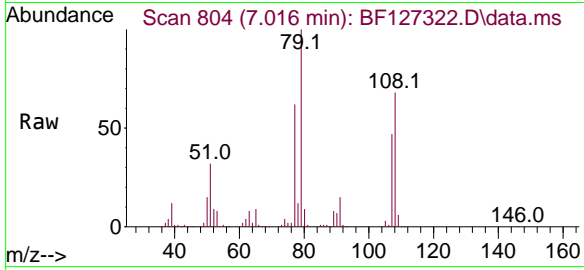
Tgt Ion:146 Resp: 382948
 Ion Ratio Lower Upper
 146 100
 148 64.7 51.6 77.4
 111 46.0 40.2 60.2



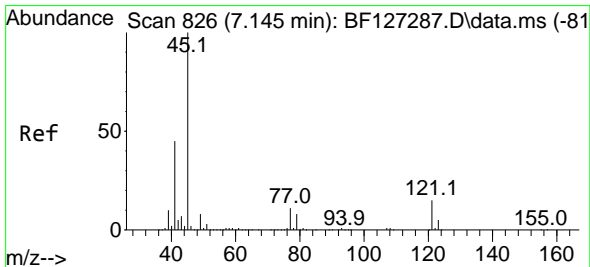
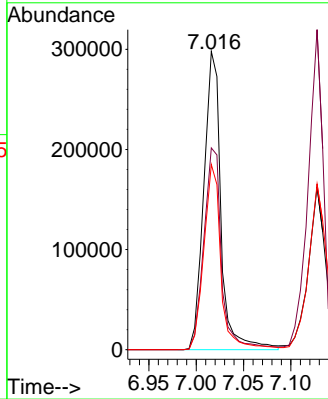
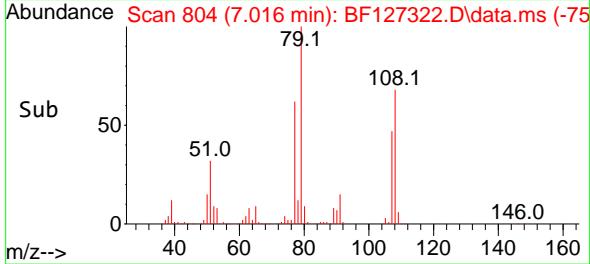


#15
 Benzyl Alcohol
 Concen: 42.878 ng
 RT: 7.016 min Scan# 80
 Delta R.T. -0.000 min
 Lab File: BF127322.D
 Acq: 15 Mar 2022 13:08

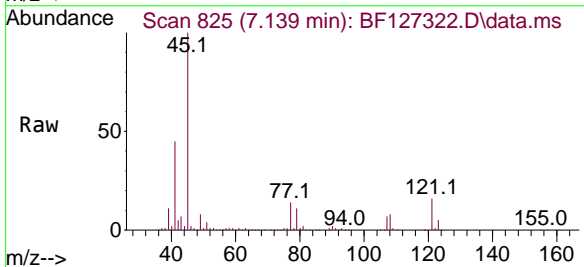
Instrument :
 BNA_F
 ClientSampleId :
 PB143267BS



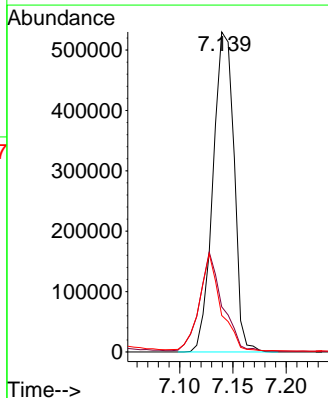
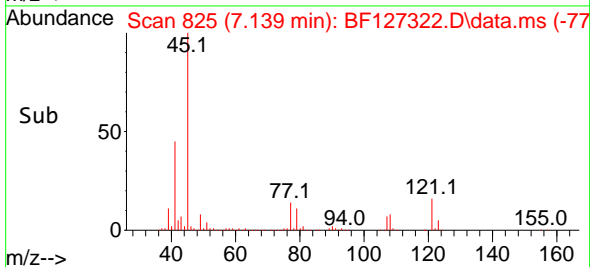
Tgt Ion: 79 Resp: 376291
 Ion Ratio Lower Upper
 79 100
 108 67.7 63.2 94.8
 77 62.1 49.4 74.2

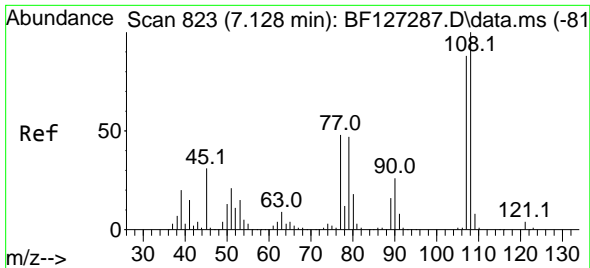


#16
 2,2'-oxybis(1-Chloropropane)
 Concen: 40.522 ng
 RT: 7.139 min Scan# 825
 Delta R.T. -0.006 min
 Lab File: BF127322.D
 Acq: 15 Mar 2022 13:08



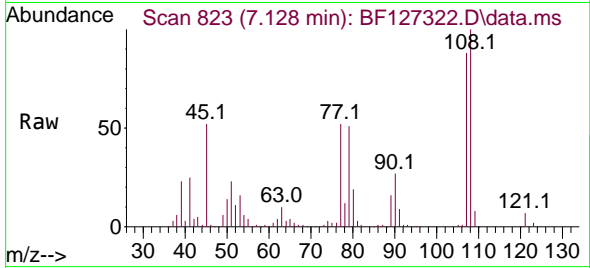
Tgt Ion: 45 Resp: 726317
 Ion Ratio Lower Upper
 45 100
 77 14.1 0.0 32.4
 79 11.4 0.0 29.8



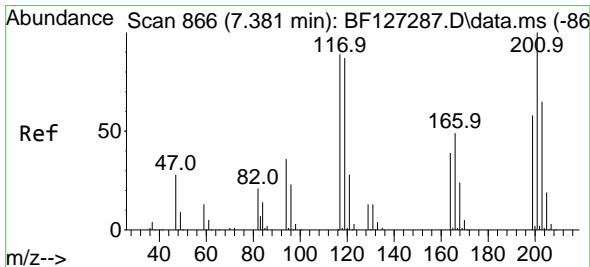
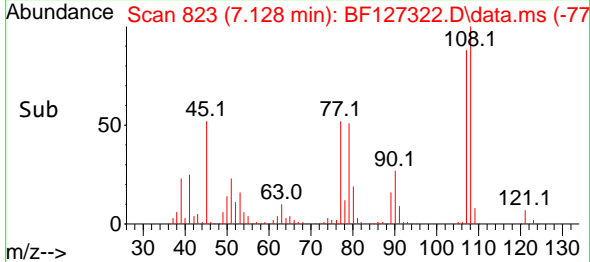
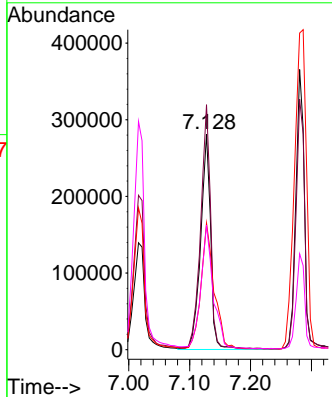


#17
 2-Methylphenol
 Concen: 43.210 ng
 RT: 7.128 min Scan# 81
 Delta R.T. -0.000 min
 Lab File: BF127322.D
 Acq: 15 Mar 2022 13:08

Instrument :
 BNA_F
 ClientSampleId :
 PB143267BS

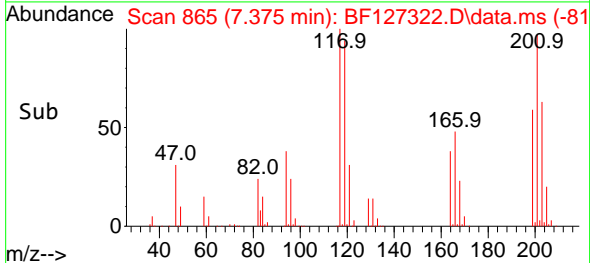
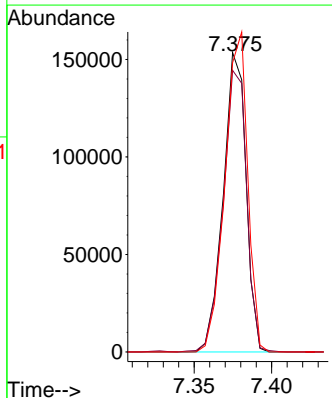
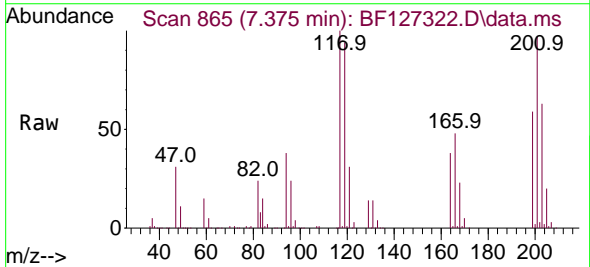


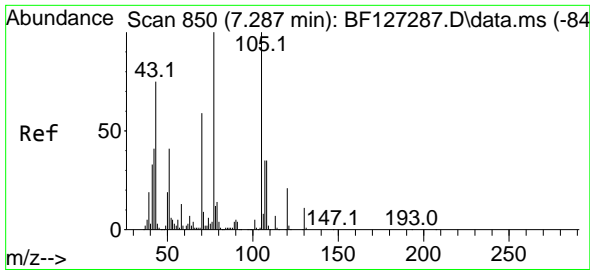
Tgt Ion	Resp	Lower	Upper
107	323435		
107	100		
108	113.7	93.4	140.0
77	58.8	36.1	54.1#
79	57.8	34.9	52.3#



#18
 Hexachloroethane
 Concen: 41.384 ng
 RT: 7.375 min Scan# 865
 Delta R.T. -0.006 min
 Lab File: BF127322.D
 Acq: 15 Mar 2022 13:08

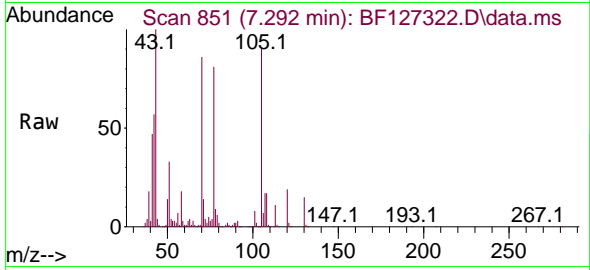
Tgt Ion	Resp	Lower	Upper
117	157623		
117	100		
119	94.0	75.4	113.0
201	96.6	56.8	85.2#



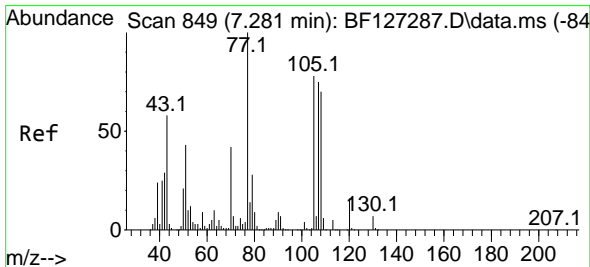
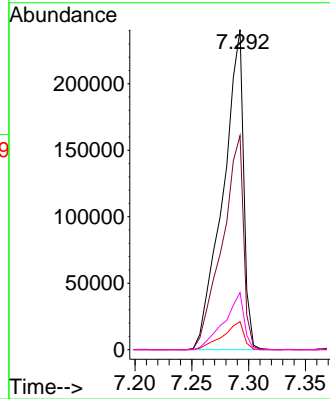
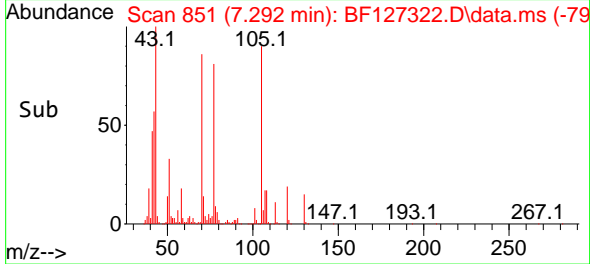


#19
 n-Nitroso-di-n-propylamine
 Concen: 41.537 ng
 RT: 7.292 min Scan# 851
 Delta R.T. 0.006 min
 Lab File: BF127322.D
 Acq: 15 Mar 2022 13:08

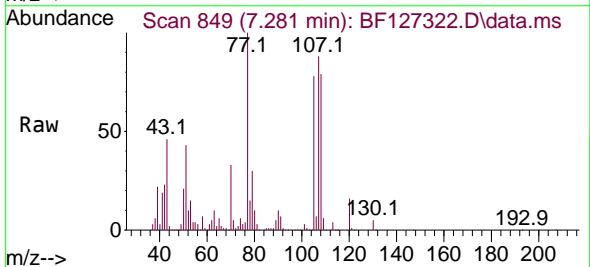
Instrument :
 BNA_F
 ClientSampleId :
 PB143267BS



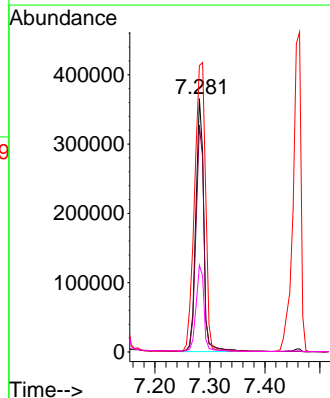
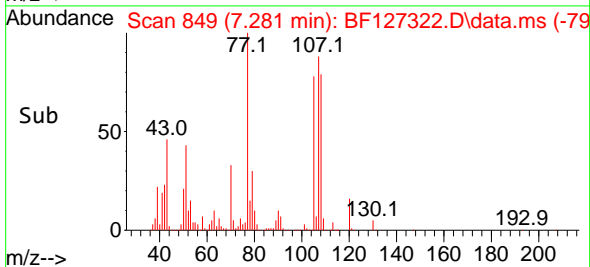
Tgt Ion: 70 Resp: 303488
 Ion Ratio Lower Upper
 70 100
 42 66.9 45.8 68.8
 101 8.7 6.9 10.3
 130 17.8 14.4 21.6

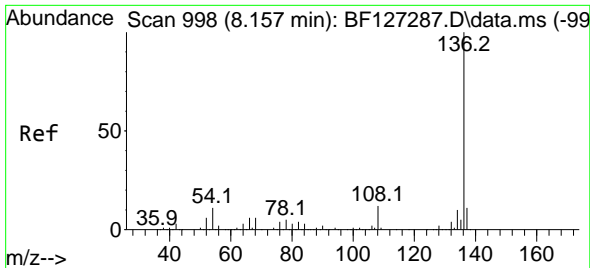


#20
 3+4-Methylphenols
 Concen: 37.424 ng
 RT: 7.281 min Scan# 849
 Delta R.T. -0.000 min
 Lab File: BF127322.D
 Acq: 15 Mar 2022 13:08



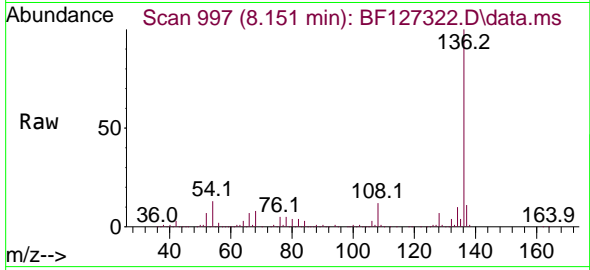
Tgt Ion: 107 Resp: 363283
 Ion Ratio Lower Upper
 107 100
 108 89.4 72.4 112.4
 77 113.0 83.8 123.8
 79 34.2 8.5 48.5





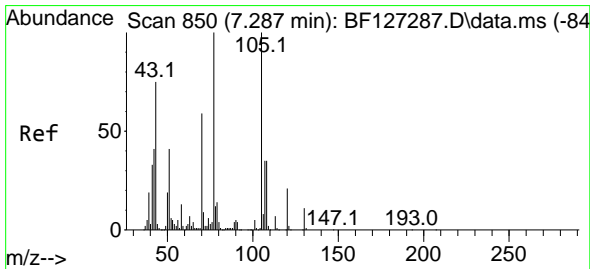
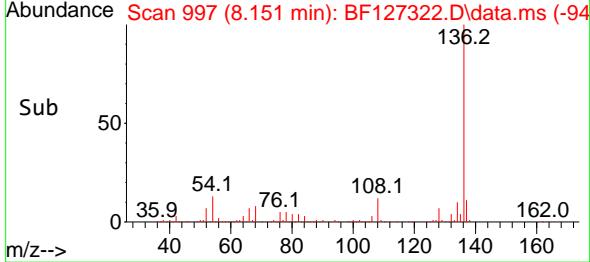
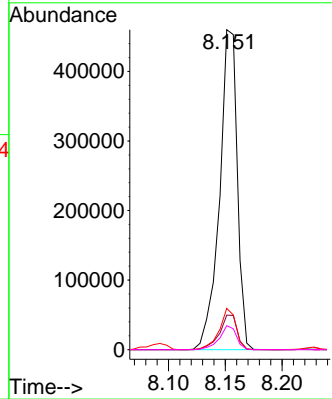
#21
 Naphthalene-d8
 Concen: 20.000 ng
 RT: 8.151 min Scan# 91
 Delta R.T. -0.006 min
 Lab File: BF127322.D
 Acq: 15 Mar 2022 13:08

Instrument :
 BNA_F
 ClientSampleId :
 PB143267BS

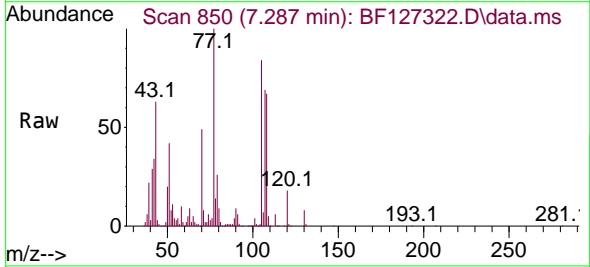


Tgt Ion:136 Resp: 502386

Ion	Ratio	Lower	Upper
136	100		
137	10.8	8.6	13.0
54	12.9	7.8	11.6#
68	7.5	6.3	9.5

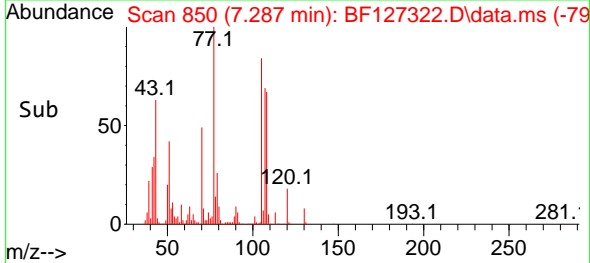
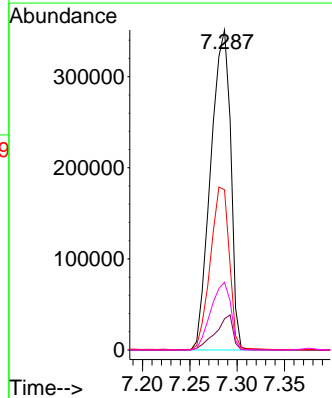


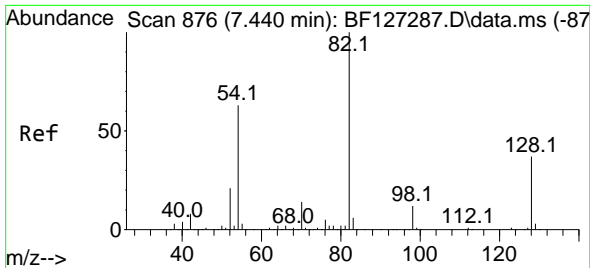
#22
 Acetophenone
 Concen: 37.261 ng
 RT: 7.287 min Scan# 850
 Delta R.T. -0.000 min
 Lab File: BF127322.D
 Acq: 15 Mar 2022 13:08



Tgt Ion:105 Resp: 512527

Ion	Ratio	Lower	Upper
105	100		
71	9.7	5.4	8.0#
51	50.0	27.4	41.0#
120	21.2	17.0	25.6

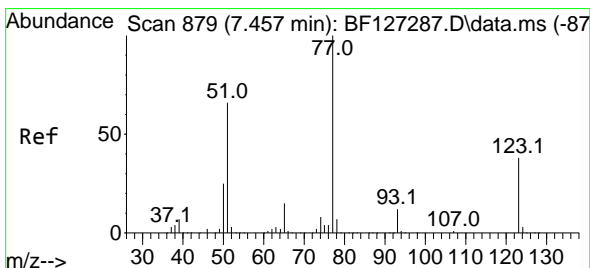
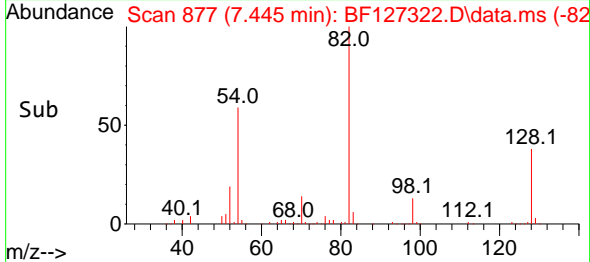
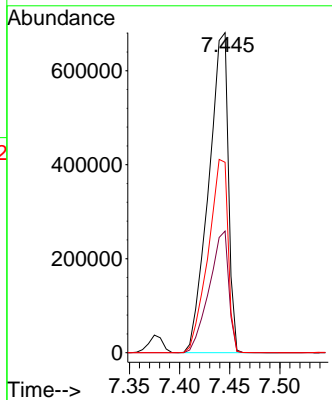
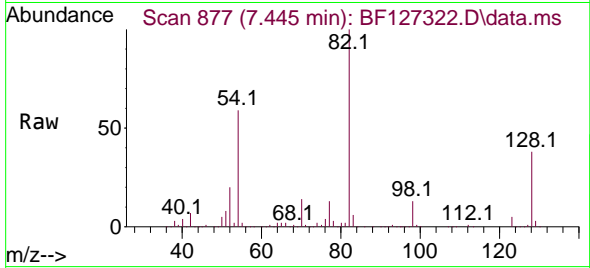




#23
 Nitrobenzene-d5
 Concen: 76.420 ng
 RT: 7.445 min Scan# 81
 Delta R.T. 0.006 min
 Lab File: BF127322.D
 Acq: 15 Mar 2022 13:08

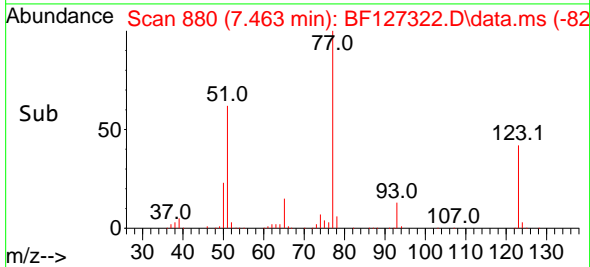
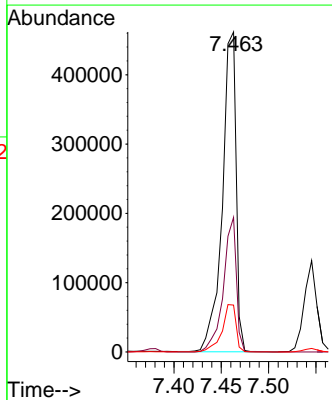
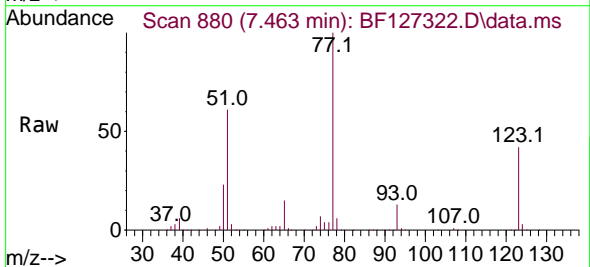
Instrument : BNA_F
 ClientSampleId : PB143267BS

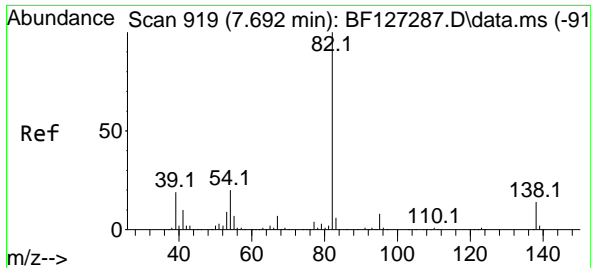
Tgt Ion	Resp	Lower	Upper
82	929635		
128	38.0	32.7	49.1
54	59.5	41.7	62.5



#24
 Nitrobenzene
 Concen: 40.817 ng
 RT: 7.463 min Scan# 880
 Delta R.T. 0.006 min
 Lab File: BF127322.D
 Acq: 15 Mar 2022 13:08

Tgt Ion	Resp	Lower	Upper
77	469636		
123	42.1	34.6	52.0
65	14.7	10.6	15.8

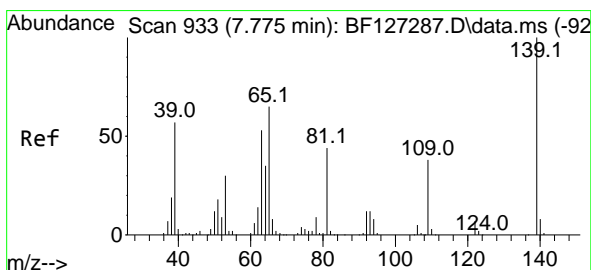
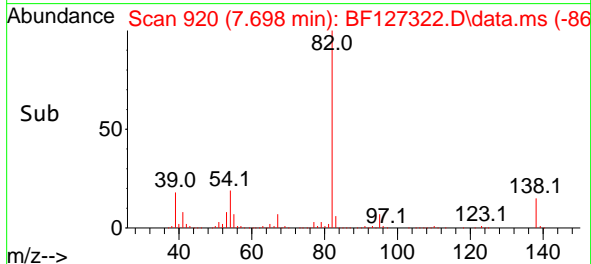
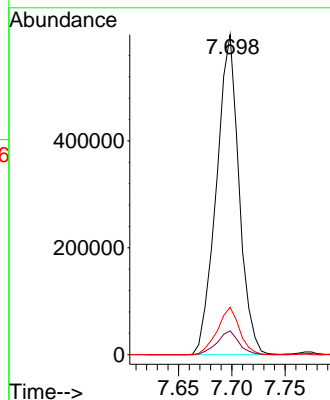
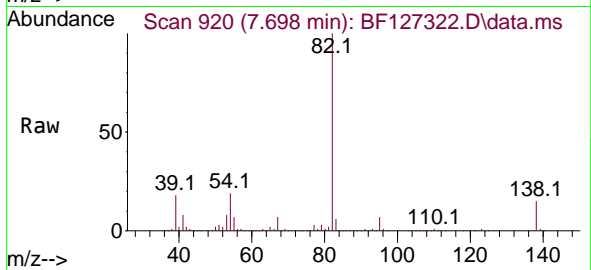




#25
 Isophorone
 Concen: 45.131 ng
 RT: 7.698 min Scan# 919
 Delta R.T. 0.006 min
 Lab File: BF127322.D
 Acq: 15 Mar 2022 13:08

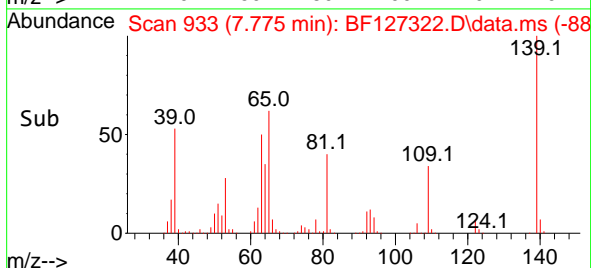
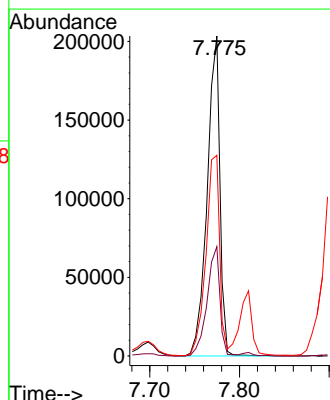
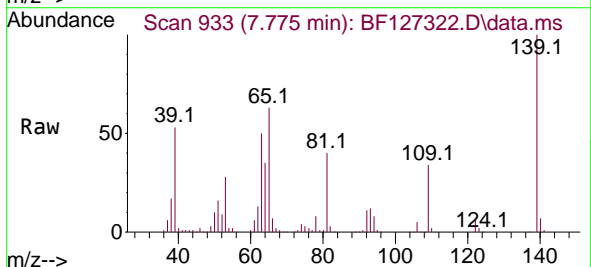
Instrument :
 BNA_F
 ClientSampleId :
 PB143267BS

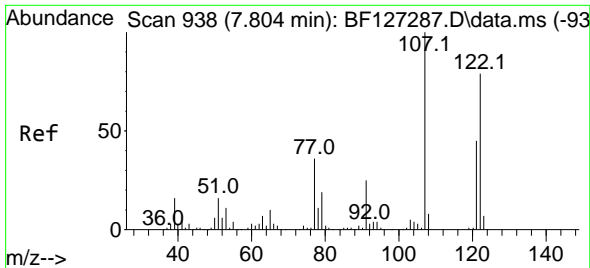
Tgt Ion: 82 Resp: 882802
 Ion Ratio Lower Upper
 82 100
 95 7.4 5.0 7.4#
 138 14.8 12.3 18.5



#26
 2-Nitrophenol
 Concen: 42.139 ng
 RT: 7.775 min Scan# 933
 Delta R.T. -0.000 min
 Lab File: BF127322.D
 Acq: 15 Mar 2022 13:08

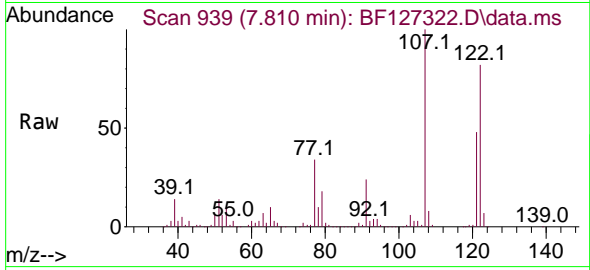
Tgt Ion:139 Resp: 200785
 Ion Ratio Lower Upper
 139 100
 109 34.2 20.0 30.0#
 65 62.7 40.8 61.2#



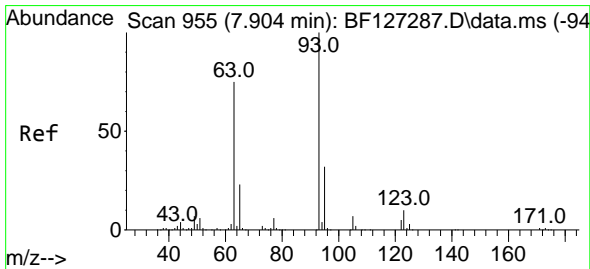
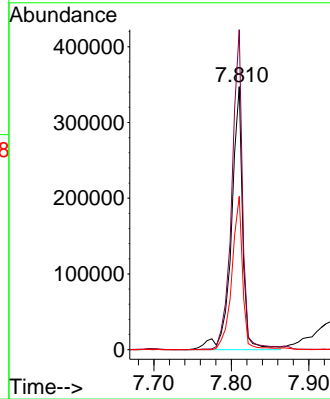
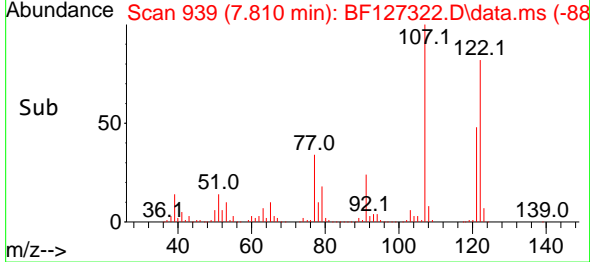


#27
 2,4-Dimethylphenol
 Concen: 49.129 ng
 RT: 7.810 min Scan# 911
 Delta R.T. 0.006 min
 Lab File: BF127322.D
 Acq: 15 Mar 2022 13:08

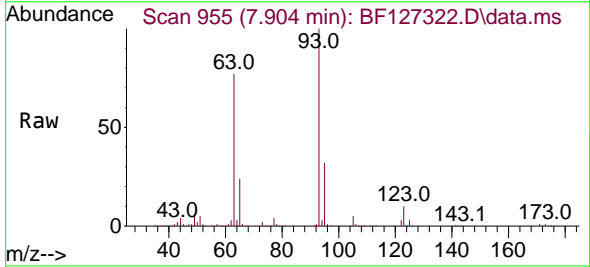
Instrument :
 BNA_F
 ClientSampleId :
 PB143267BS



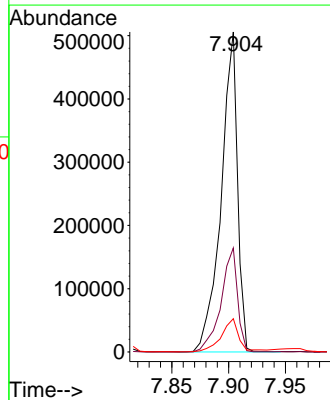
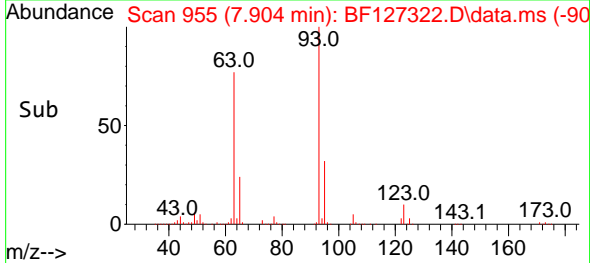
Tgt Ion:122 Resp: 351408
 Ion Ratio Lower Upper
 122 100
 107 121.6 91.2 136.8
 121 58.2 44.4 66.6

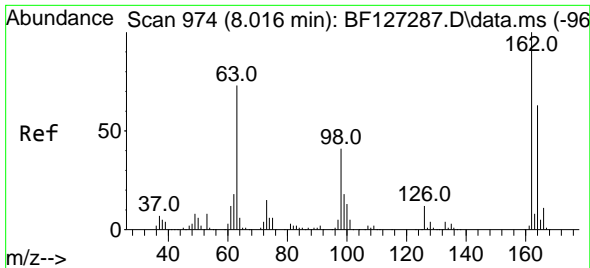


#28
 bis(2-Chloroethoxy)methane
 Concen: 41.088 ng
 RT: 7.904 min Scan# 955
 Delta R.T. -0.000 min
 Lab File: BF127322.D
 Acq: 15 Mar 2022 13:08



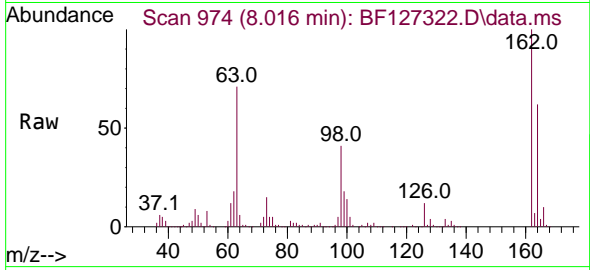
Tgt Ion: 93 Resp: 509250
 Ion Ratio Lower Upper
 93 100
 95 32.5 25.4 38.2
 123 10.4 8.9 13.3



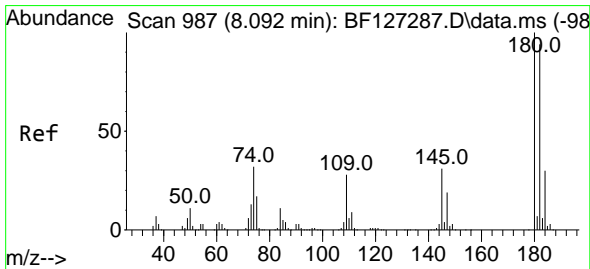
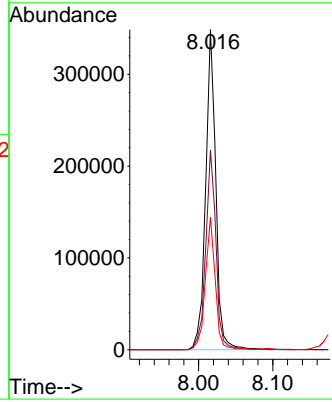
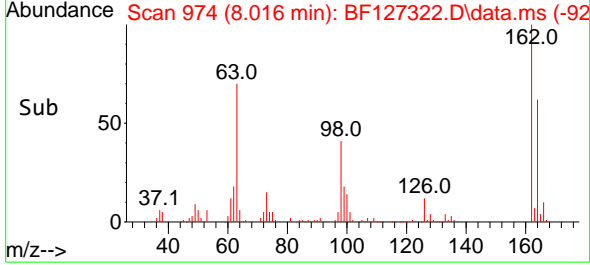


#29
 2,4-Dichlorophenol
 Concen: 40.640 ng
 RT: 8.016 min Scan# 91
 Delta R.T. -0.000 min
 Lab File: BF127322.D
 Acq: 15 Mar 2022 13:08

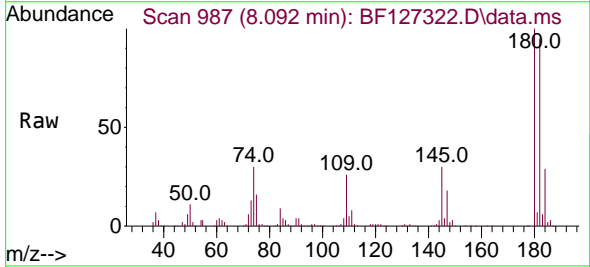
Instrument :
 BNA_F
 ClientSampleId :
 PB143267BS



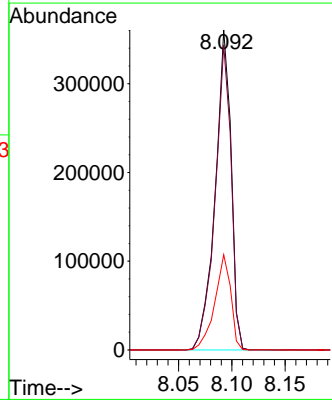
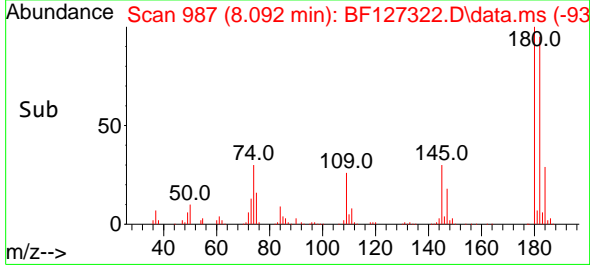
Tgt Ion:162 Resp: 332903
 Ion Ratio Lower Upper
 162 100
 164 62.4 43.8 83.8
 98 41.3 23.6 63.6

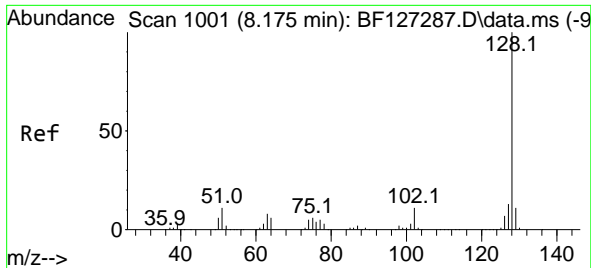


#30
 1,2,4-Trichlorobenzene
 Concen: 40.002 ng
 RT: 8.092 min Scan# 987
 Delta R.T. -0.000 min
 Lab File: BF127322.D
 Acq: 15 Mar 2022 13:08



Tgt Ion:180 Resp: 373570
 Ion Ratio Lower Upper
 180 100
 182 95.3 75.5 113.3
 145 29.8 26.2 39.2

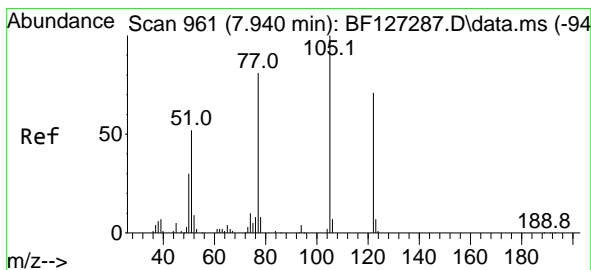
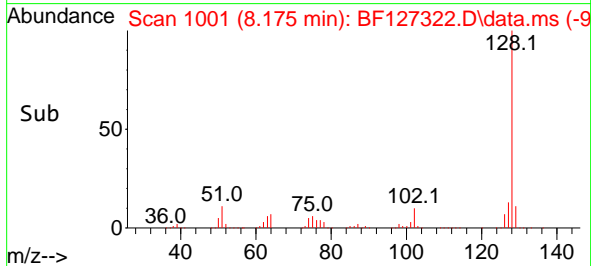
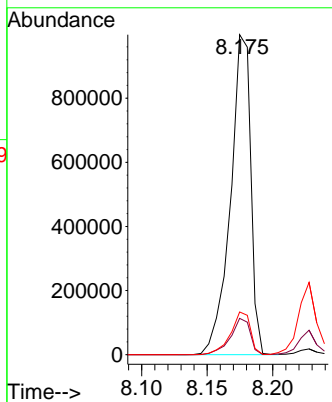
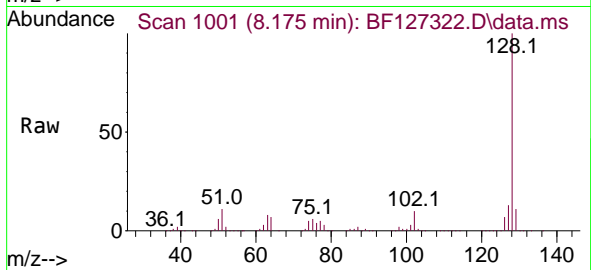




#31
 Naphthalene
 Concen: 40.169 ng
 RT: 8.175 min Scan# 10
 Delta R.T. -0.000 min
 Lab File: BF127322.D
 Acq: 15 Mar 2022 13:08

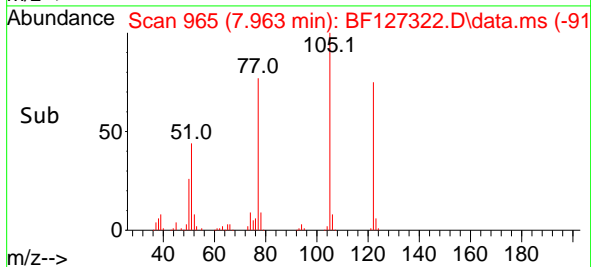
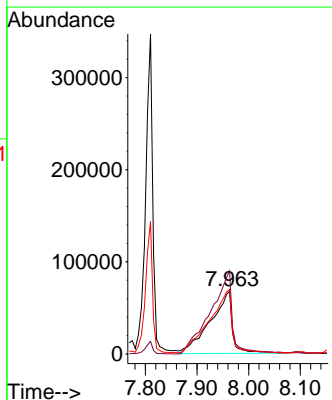
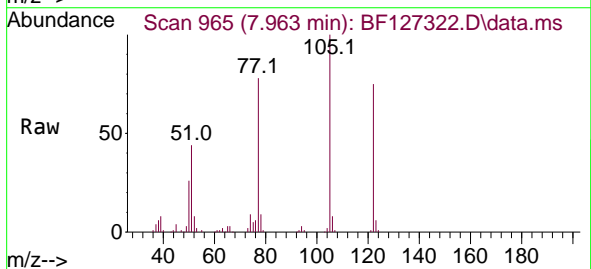
Instrument :
 BNA_F
 ClientSampleId :
 PB143267BS

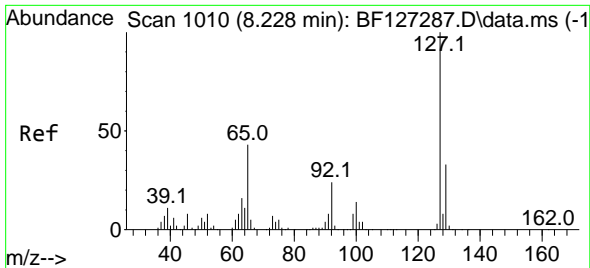
Tgt Ion:128 Resp: 1076492
 Ion Ratio Lower Upper
 128 100
 129 11.4 8.6 13.0
 127 13.4 10.3 15.5



#32
 Benzoic acid
 Concen: 41.454 ng
 RT: 7.963 min Scan# 965
 Delta R.T. 0.023 min
 Lab File: BF127322.D
 Acq: 15 Mar 2022 13:08

Tgt Ion:122 Resp: 200888
 Ion Ratio Lower Upper
 122 100
 105 132.5 101.0 141.0
 77 103.0 74.5 114.5



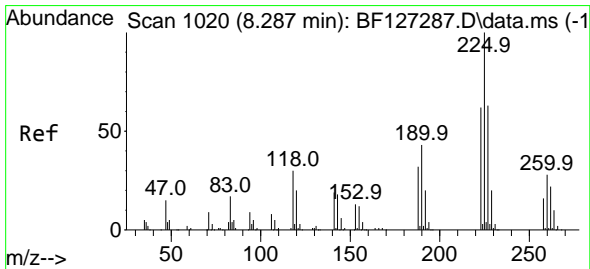
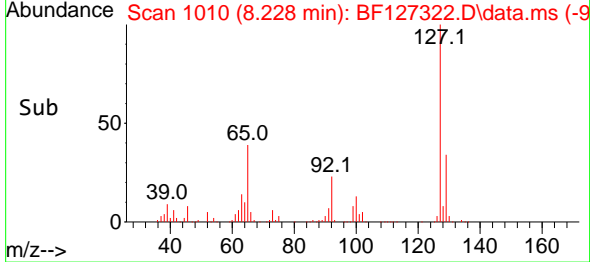
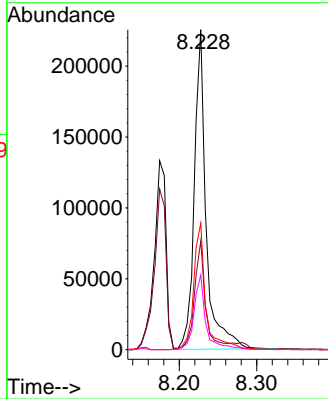
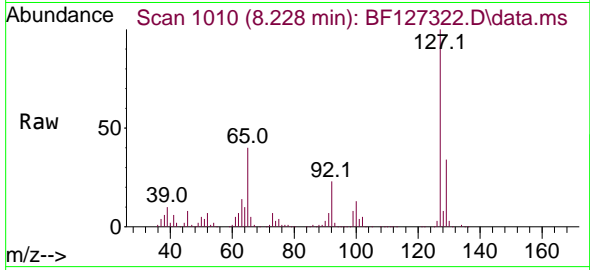


#33
 4-Chloroaniline
 Concen: 23.146 ng
 RT: 8.228 min Scan# 1010
 Delta R.T. -0.000 min
 Lab File: BF127322.D
 Acq: 15 Mar 2022 13:08

Instrument : BNA_F
 ClientSampleId : PB143267BS

Tgt Ion:127 Resp: 240433

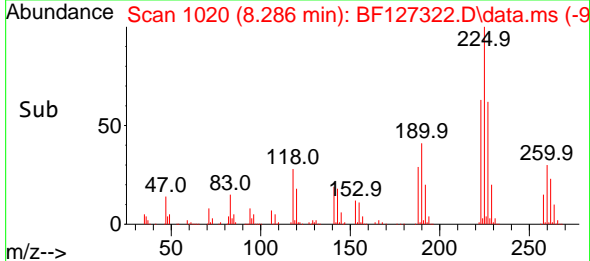
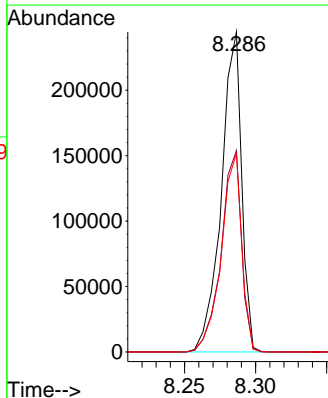
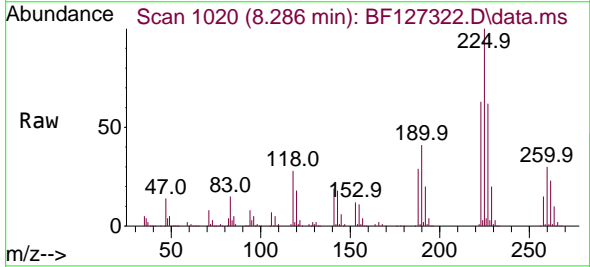
Ion	Ratio	Lower	Upper
127	100		
129	34.0	26.5	39.7
65	39.6	26.6	39.8
92	23.3	16.1	24.1

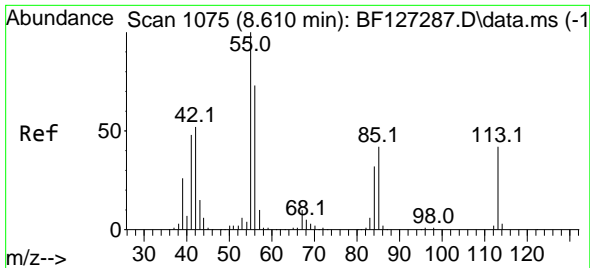


#34
 Hexachlorobutadiene
 Concen: 38.943 ng
 RT: 8.286 min Scan# 1020
 Delta R.T. -0.000 min
 Lab File: BF127322.D
 Acq: 15 Mar 2022 13:08

Tgt Ion:225 Resp: 242515

Ion	Ratio	Lower	Upper
225	100		
223	63.0	48.6	73.0
227	62.0	51.4	77.0

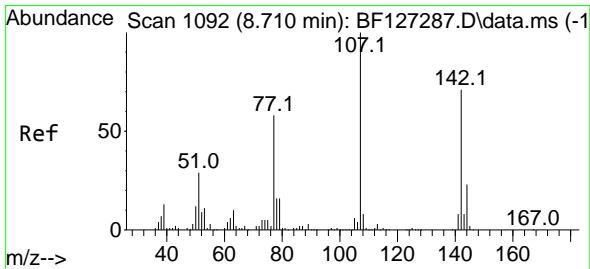
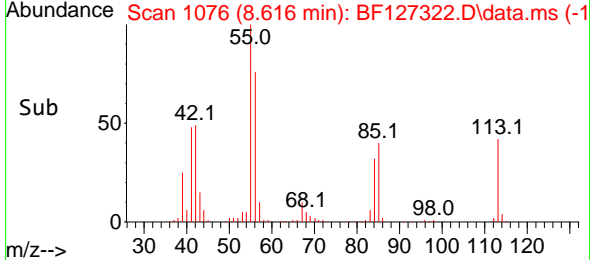
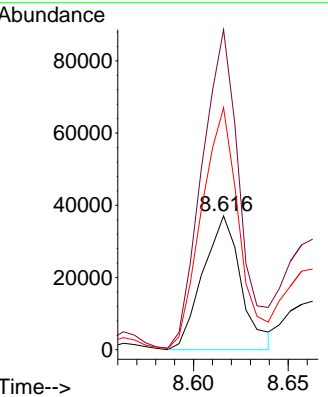
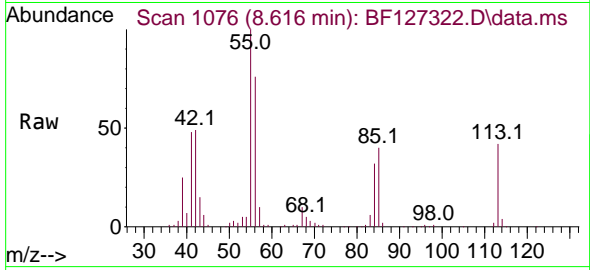




#35
 Caprolactam
 Concen: 21.242 ng
 RT: 8.616 min Scan# 1075
 Delta R.T. 0.006 min
 Lab File: BF127322.D
 Acq: 15 Mar 2022 13:08

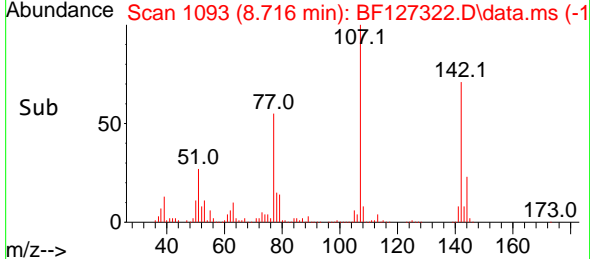
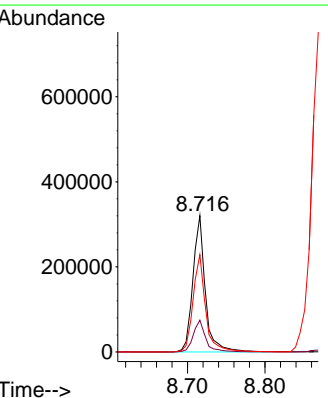
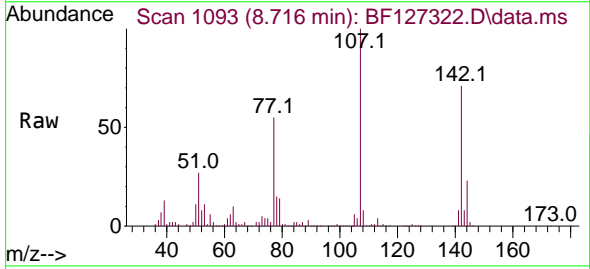
Instrument :
 BNA_F
 ClientSampleId :
 PB143267BS

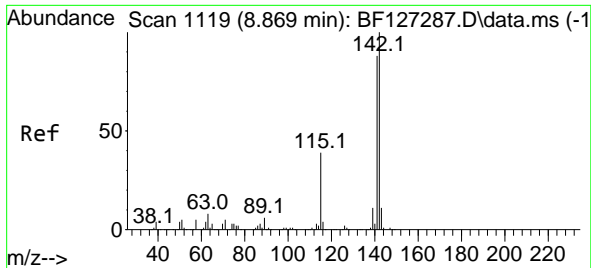
Tgt Ion:113 Resp: 51982
 Ion Ratio Lower Upper
 113 100
 55 239.2 183.9 223.9#
 56 180.9 129.9 169.9#



#36
 4-Chloro-3-methylphenol
 Concen: 40.267 ng
 RT: 8.716 min Scan# 1093
 Delta R.T. 0.006 min
 Lab File: BF127322.D
 Acq: 15 Mar 2022 13:08

Tgt Ion:107 Resp: 357506
 Ion Ratio Lower Upper
 107 100
 144 23.4 18.5 27.7
 142 71.4 58.1 87.1





#37
 2-Methylnaphthalene
 Concen: 40.044 ng
 RT: 8.869 min Scan# 1119
 Delta R.T. -0.000 min
 Lab File: BF127322.D
 Acq: 15 Mar 2022 13:08

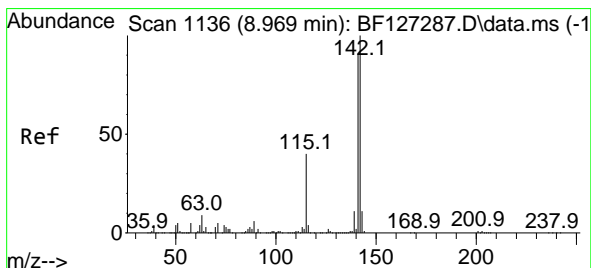
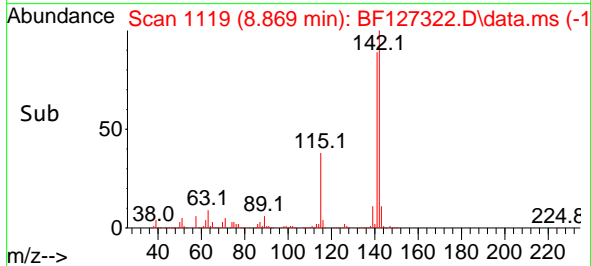
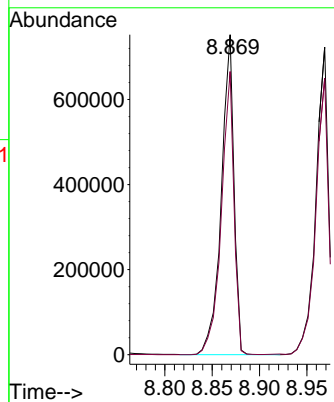
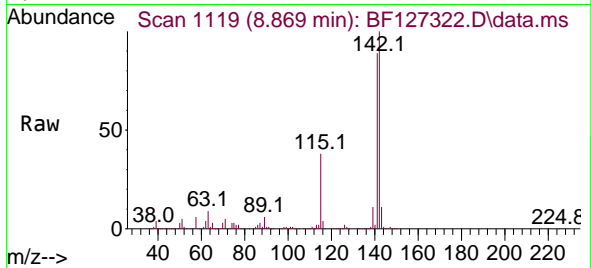
Instrument :

BNA_F

ClientSampleId :

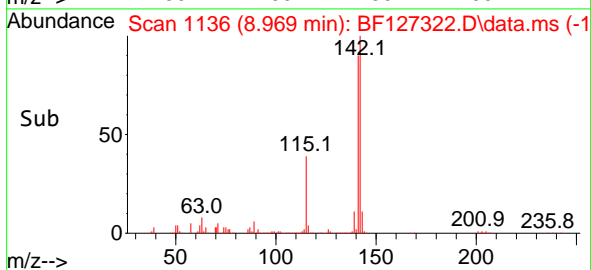
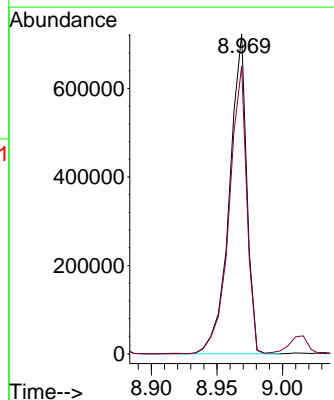
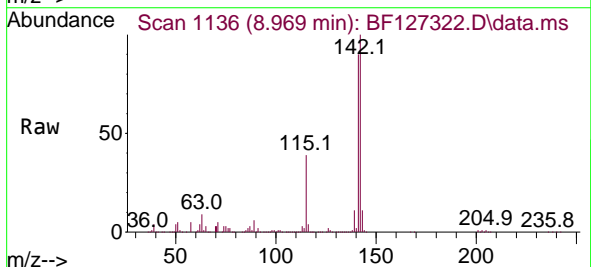
PB143267BS

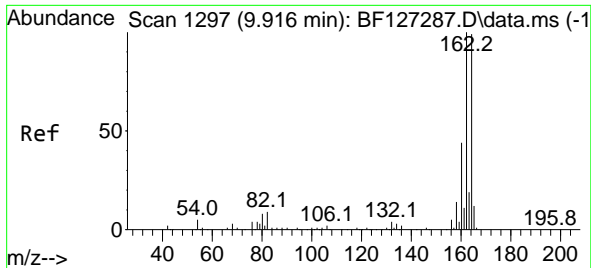
Tgt Ion:142 Resp: 701211
 Ion Ratio Lower Upper
 142 100
 141 88.5 68.6 102.8



#38
 1-Methylnaphthalene
 Concen: 39.573 ng
 RT: 8.969 min Scan# 1136
 Delta R.T. -0.000 min
 Lab File: BF127322.D
 Acq: 15 Mar 2022 13:08

Tgt Ion:142 Resp: 666193
 Ion Ratio Lower Upper
 142 100
 141 89.8 72.1 108.1





#39
 Acenaphthene-d10
 Concen: 20.000 ng
 RT: 9.916 min Scan# 1147
 Delta R.T. -0.000 min
 Lab File: BF127322.D
 Acq: 15 Mar 2022 13:08

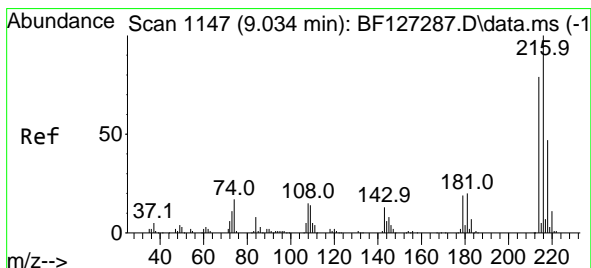
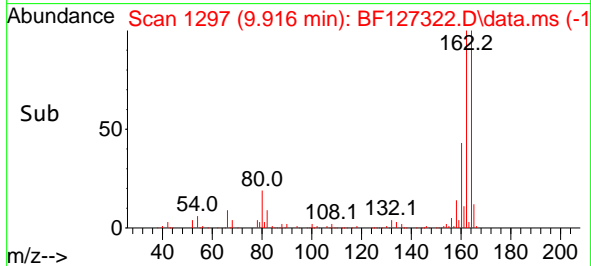
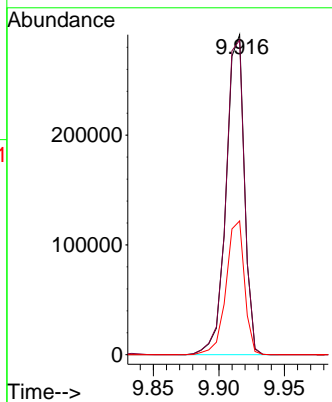
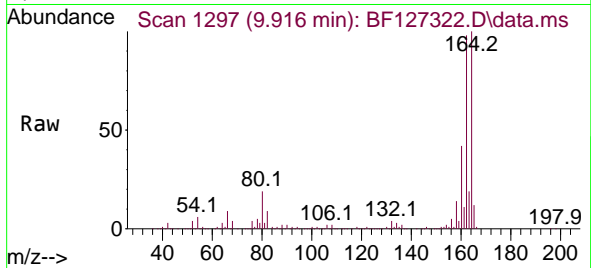
Instrument :

BNA_F

ClientSampleId :

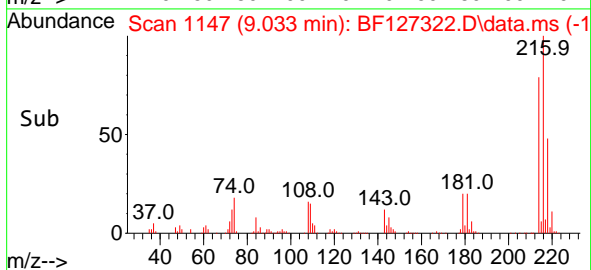
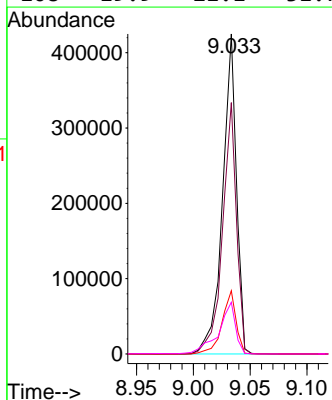
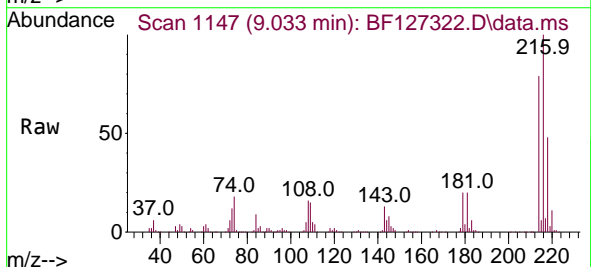
PB143267BS

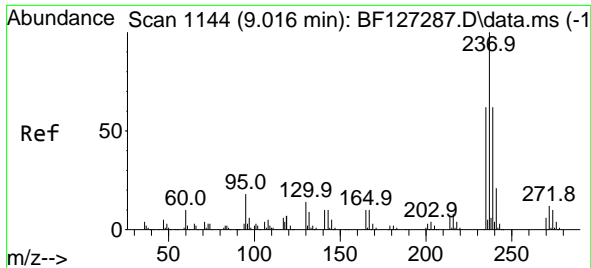
Tgt Ion:164 Resp: 282228
 Ion Ratio Lower Upper
 164 100
 162 98.3 81.4 122.0
 160 41.8 36.6 54.8



#40
 1,2,4,5-Tetrachlorobenzene
 Concen: 40.582 ng
 RT: 9.033 min Scan# 1147
 Delta R.T. -0.000 min
 Lab File: BF127322.D
 Acq: 15 Mar 2022 13:08

Tgt Ion:216 Resp: 362577
 Ion Ratio Lower Upper
 216 100
 214 78.7 64.6 96.8
 179 19.9 19.5 29.3
 108 19.9 21.1 31.7#





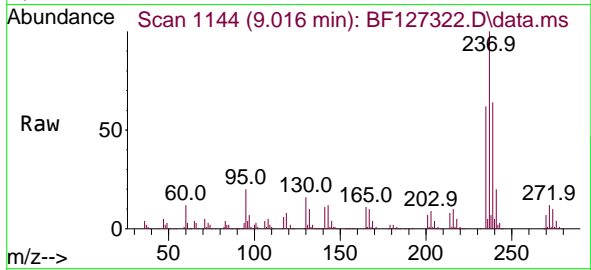
#41
 Hexachlorocyclopentadiene
 Concen: 97.716 ng
 RT: 9.016 min Scan# 1144
 Delta R.T. -0.000 min
 Lab File: BF127322.D
 Acq: 15 Mar 2022 13:08

Instrument :

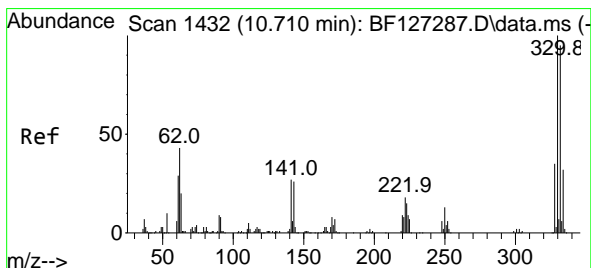
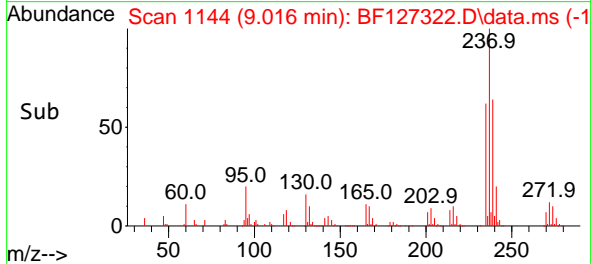
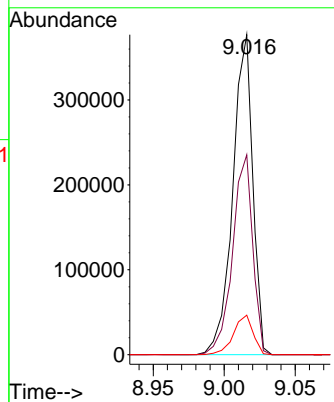
BNA_F

ClientSampleId :

PB143267BS

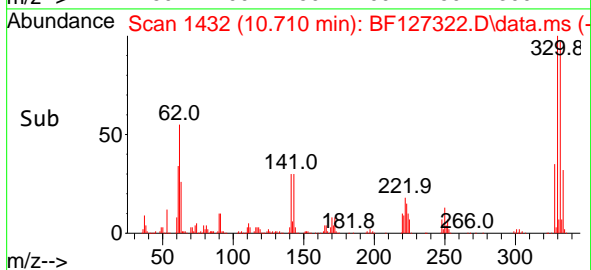
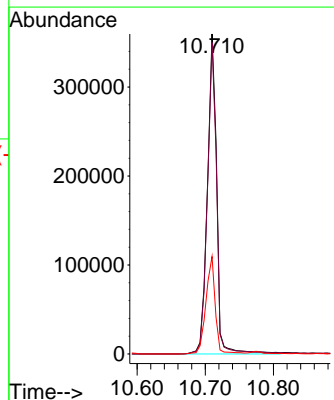
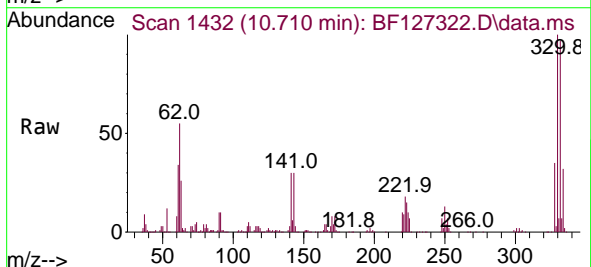


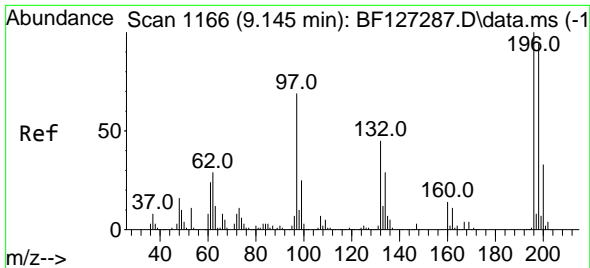
Tgt Ion:237 Resp: 369595
 Ion Ratio Lower Upper
 237 100
 235 62.4 38.9 78.9
 272 12.3 0.0 33.5



#42
 2,4,6-Tribromophenol
 Concen: 112.597 ng
 RT: 10.710 min Scan# 1432
 Delta R.T. -0.000 min
 Lab File: BF127322.D
 Acq: 15 Mar 2022 13:08

Tgt Ion:330 Resp: 342087
 Ion Ratio Lower Upper
 330 100
 332 97.8 76.0 114.0
 141 30.6 30.1 45.1



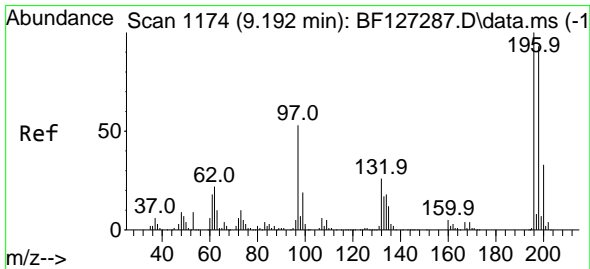
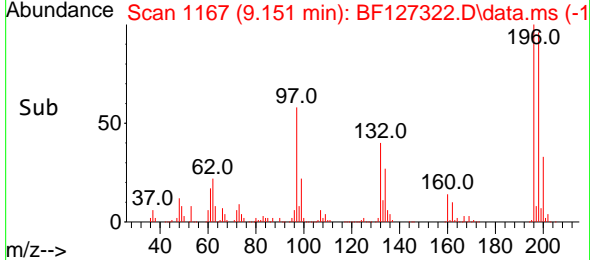
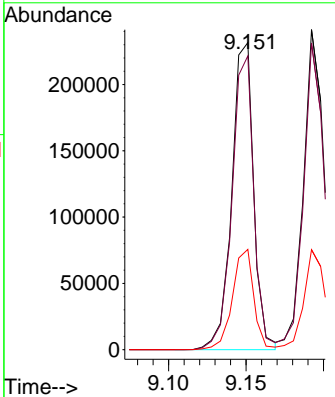
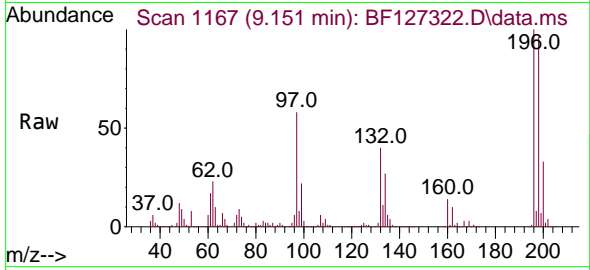


#43
 2,4,6-Trichlorophenol
 Concen: 40.264 ng
 RT: 9.151 min Scan# 1167
 Delta R.T. 0.006 min
 Lab File: BF127322.D
 Acq: 15 Mar 2022 13:08

Instrument : BNA_F
 ClientSampleId : PB143267BS

Tgt Ion:196 Resp: 227046

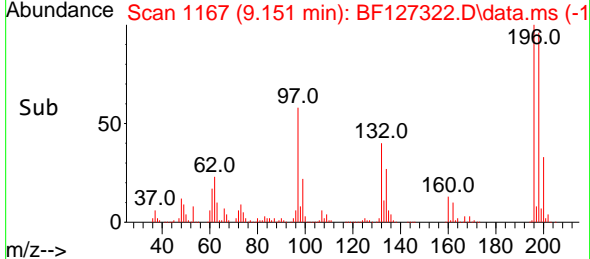
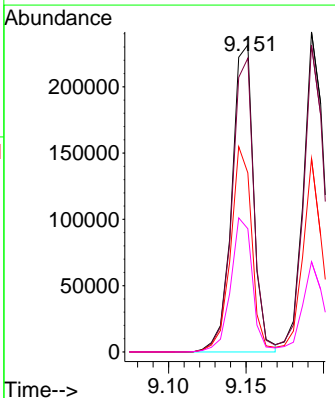
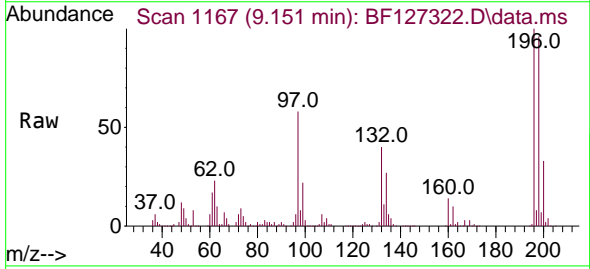
Ion	Ratio	Lower	Upper
196	100		
198	95.7	78.5	117.7
200	32.7	24.9	37.3

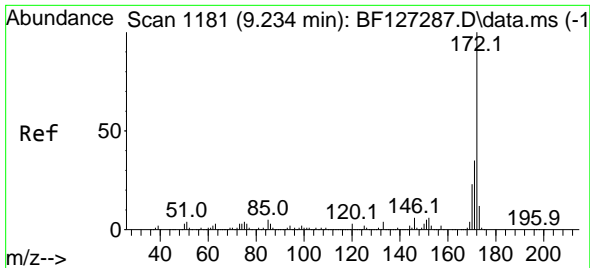


#44
 2,4,5-Trichlorophenol
 Concen: 37.938 ng
 RT: 9.151 min Scan# 1167
 Delta R.T. -0.041 min
 Lab File: BF127322.D
 Acq: 15 Mar 2022 13:08

Tgt Ion:196 Resp: 227046

Ion	Ratio	Lower	Upper
196	100		
198	95.7	82.0	123.0
97	58.3	53.5	80.3
132	40.1	28.7	43.1



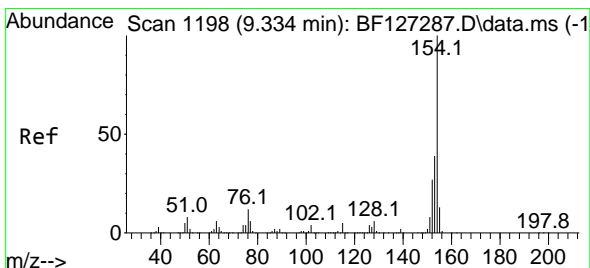
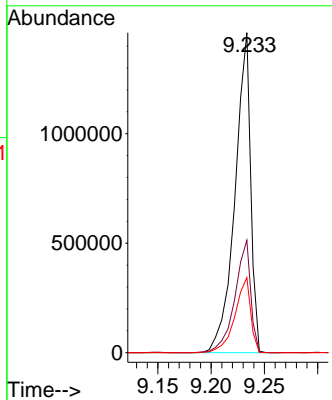
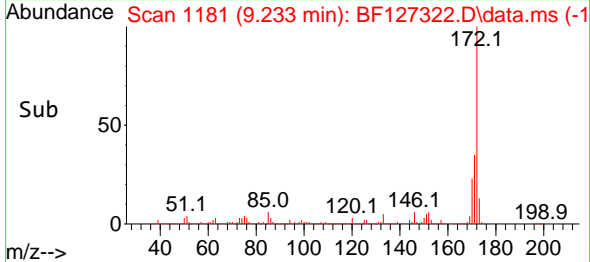
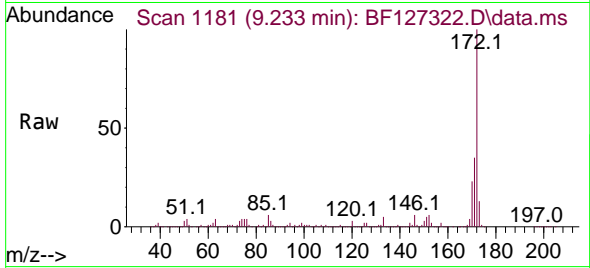


#45
 2-Fluorobiphenyl
 Concen: 74.954 ng
 RT: 9.233 min Scan# 1181
 Delta R.T. -0.000 min
 Lab File: BF127322.D
 Acq: 15 Mar 2022 13:08

Instrument : BNA_F
 ClientSampleId : PB143267BS

Tgt Ion:172 Resp: 1496266

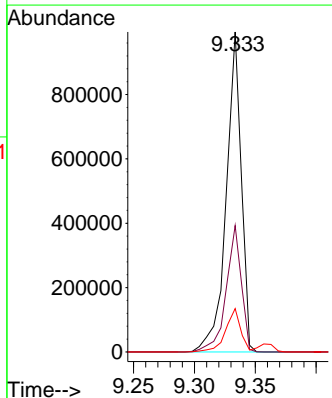
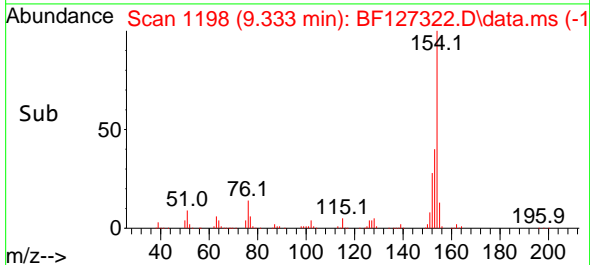
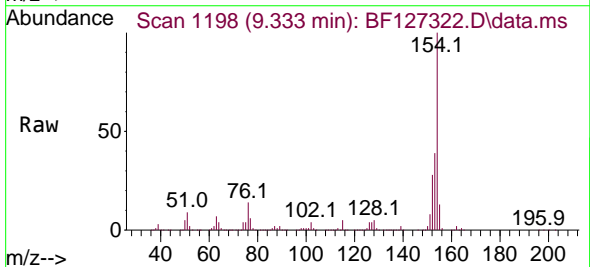
Ion	Ratio	Lower	Upper
172	100		
171	35.2	28.3	42.5
170	23.4	19.0	28.6

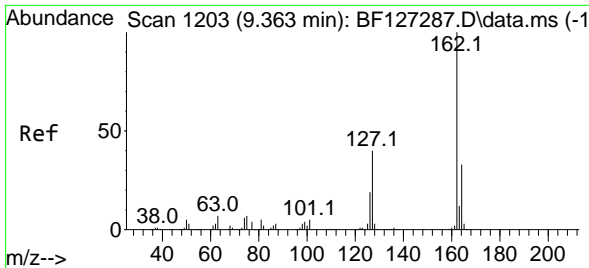


#46
 1,1'-Biphenyl
 Concen: 40.080 ng
 RT: 9.333 min Scan# 1198
 Delta R.T. -0.000 min
 Lab File: BF127322.D
 Acq: 15 Mar 2022 13:08

Tgt Ion:154 Resp: 853736

Ion	Ratio	Lower	Upper
154	100		
153	39.5	19.0	59.0
76	13.6	0.0	34.5





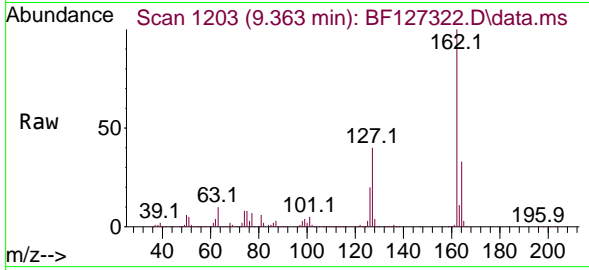
#47
 2-Chloronaphthalene
 Concen: 40.205 ng
 RT: 9.363 min Scan# 11
 Delta R.T. -0.000 min
 Lab File: BF127322.D
 Acq: 15 Mar 2022 13:08

Instrument :

BNA_F

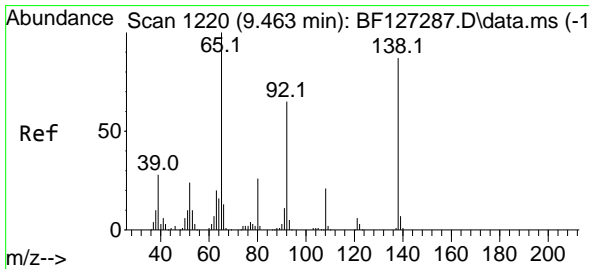
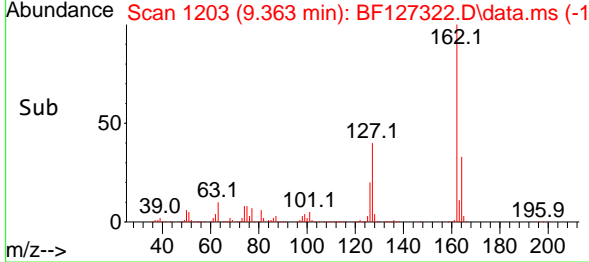
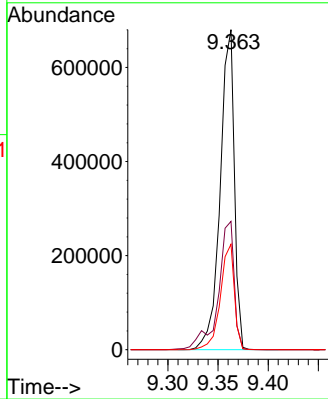
ClientSampleId :

PB143267BS



Tgt Ion:162 Resp: 666646

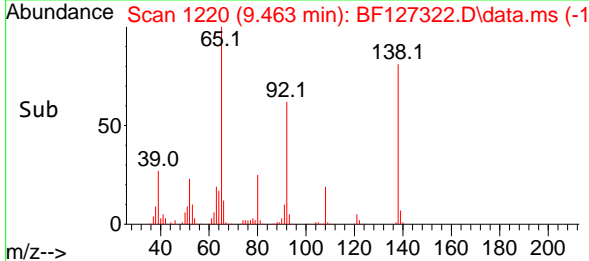
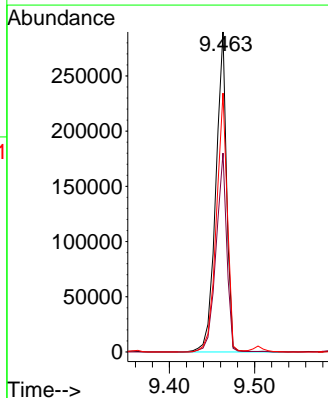
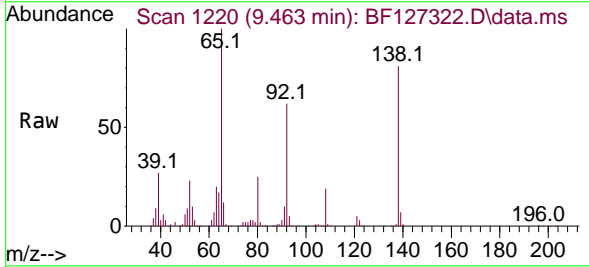
Ion	Ratio	Lower	Upper
162	100		
127	40.1	33.5	50.3
164	32.9	26.2	39.4

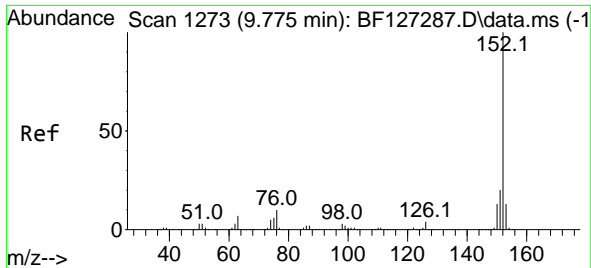


#48
 2-Nitroaniline
 Concen: 40.027 ng
 RT: 9.463 min Scan# 1220
 Delta R.T. -0.000 min
 Lab File: BF127322.D
 Acq: 15 Mar 2022 13:08

Tgt Ion: 65 Resp: 255363

Ion	Ratio	Lower	Upper
65	100		
92	62.2	54.4	81.6
138	80.9	72.5	108.7

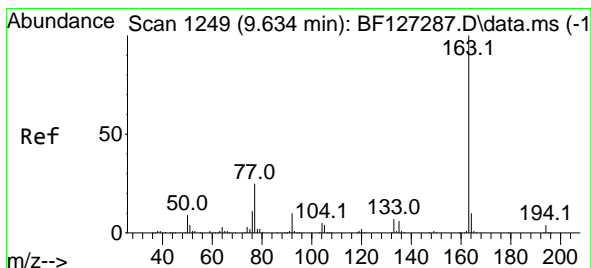
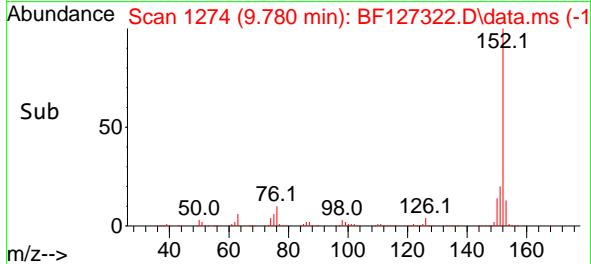
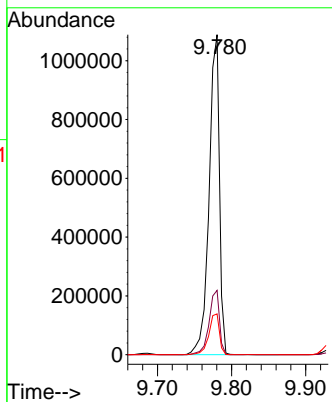
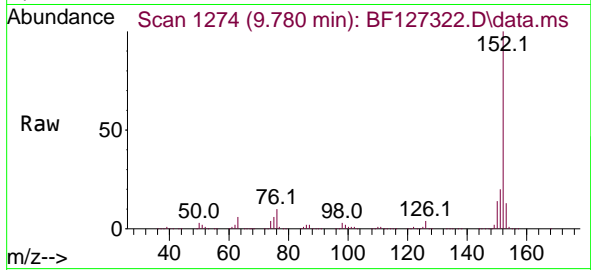




#49
 Acenaphthylene
 Concen: 41.480 ng
 RT: 9.780 min Scan# 11
 Delta R.T. 0.006 min
 Lab File: BF127322.D
 Acq: 15 Mar 2022 13:08

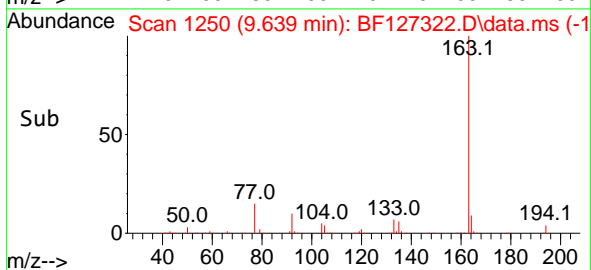
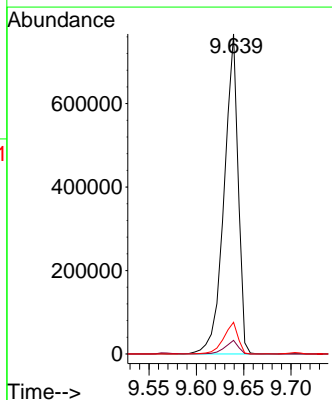
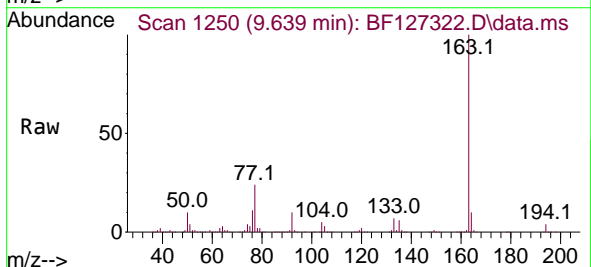
Instrument :
 BNA_F
 ClientSampleId :
 PB143267BS

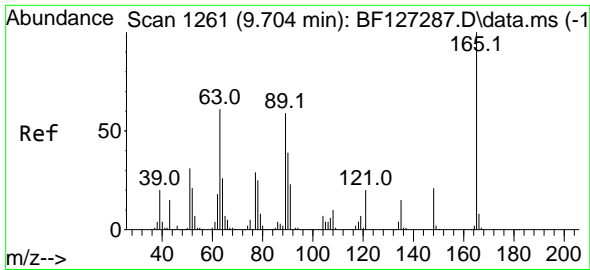
Tgt Ion:152 Resp: 1052563
 Ion Ratio Lower Upper
 152 100
 151 20.1 15.7 23.5
 153 12.7 11.4 17.0



#50
 Dimethylphthalate
 Concen: 39.232 ng
 RT: 9.639 min Scan# 1250
 Delta R.T. 0.006 min
 Lab File: BF127322.D
 Acq: 15 Mar 2022 13:08

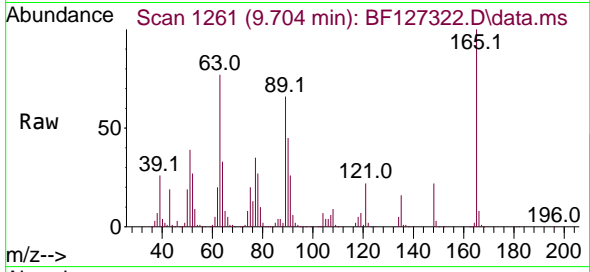
Tgt Ion:163 Resp: 793404
 Ion Ratio Lower Upper
 163 100
 194 4.3 2.6 3.8#
 164 9.9 7.8 11.8



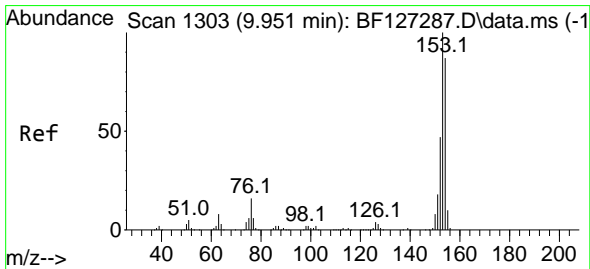
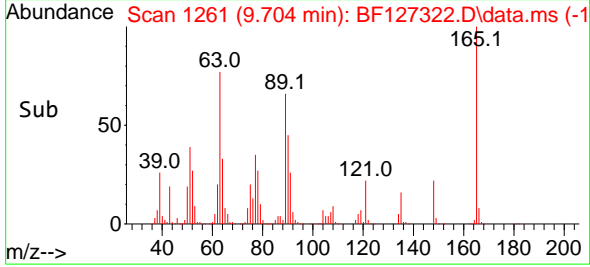
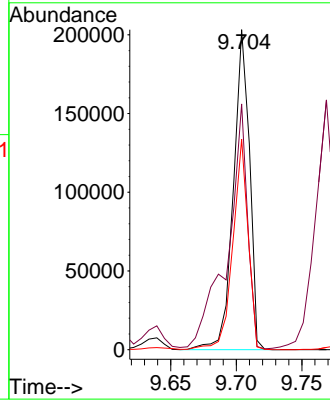


#51
 2,6-Dinitrotoluene
 Concen: 42.424 ng
 RT: 9.704 min Scan# 1261
 Delta R.T. -0.000 min
 Lab File: BF127322.D
 Acq: 15 Mar 2022 13:08

Instrument : BNA_F
 ClientSampleId : PB143267BS

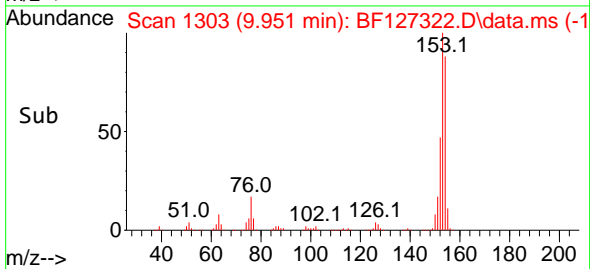
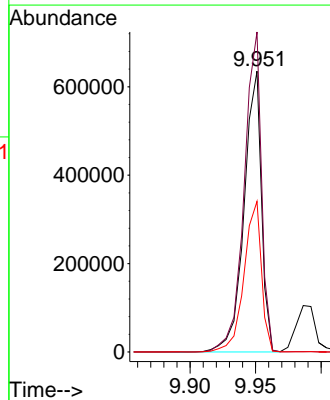
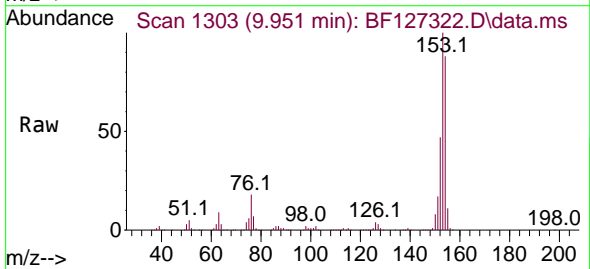


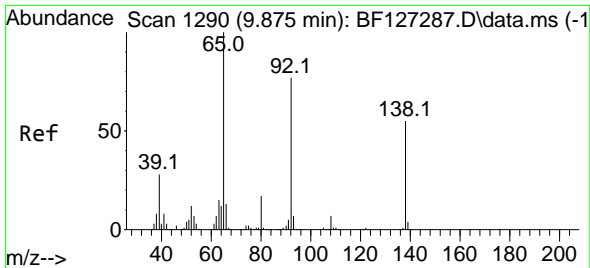
Tgt Ion:165 Resp: 173552
 Ion Ratio Lower Upper
 165 100
 63 76.8 48.4 72.6#
 89 65.8 50.5 75.7



#52
 Acenaphthene
 Concen: 38.885 ng
 RT: 9.951 min Scan# 1303
 Delta R.T. -0.000 min
 Lab File: BF127322.D
 Acq: 15 Mar 2022 13:08

Tgt Ion:154 Resp: 588166
 Ion Ratio Lower Upper
 154 100
 153 114.0 87.8 131.6
 152 53.7 39.4 59.2

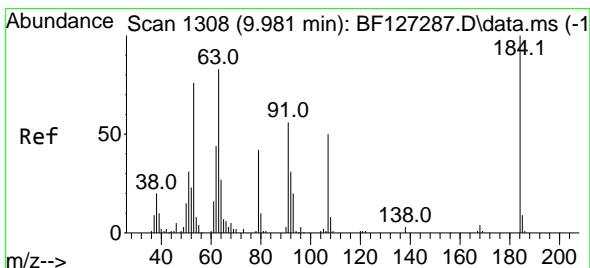
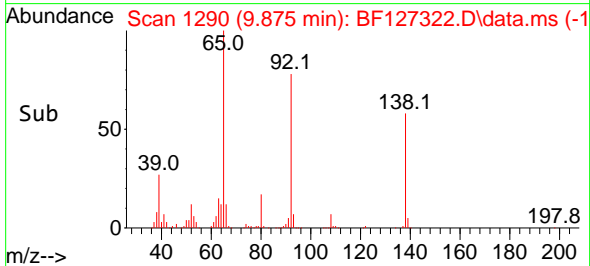
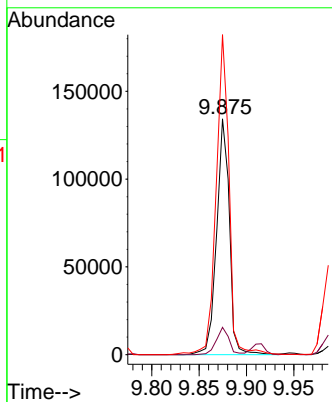
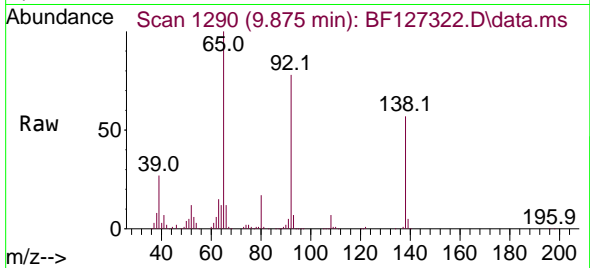




#53
 3-Nitroaniline
 Concen: 28.180 ng
 RT: 9.875 min Scan# 11
 Delta R.T. -0.000 min
 Lab File: BF127322.D
 Acq: 15 Mar 2022 13:08

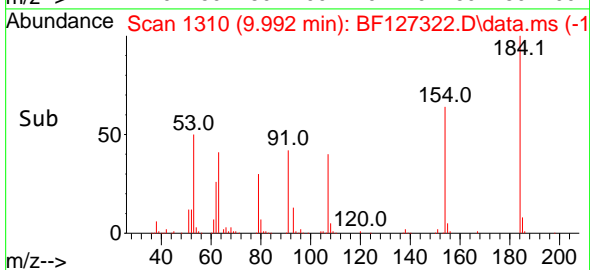
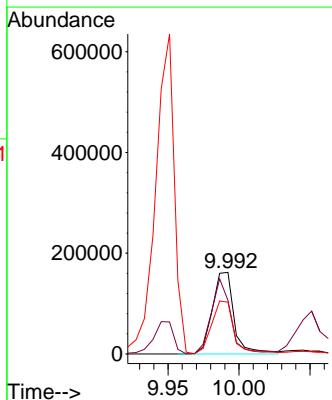
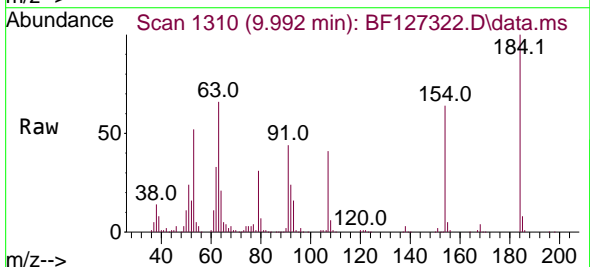
Instrument :
 BNA_F
 ClientSampleId :
 PB143267BS

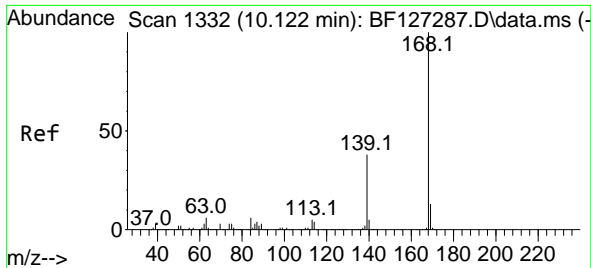
Tgt Ion:138 Resp: 125624
 Ion Ratio Lower Upper
 138 100
 108 11.6 8.6 13.0
 92 135.7 105.0 157.6



#54
 2,4-Dinitrophenol
 Concen: 76.789 ng
 RT: 9.992 min Scan# 1310
 Delta R.T. 0.011 min
 Lab File: BF127322.D
 Acq: 15 Mar 2022 13:08

Tgt Ion:184 Resp: 172749
 Ion Ratio Lower Upper
 184 100
 63 65.7 70.4 105.6#
 154 63.5 49.7 74.5

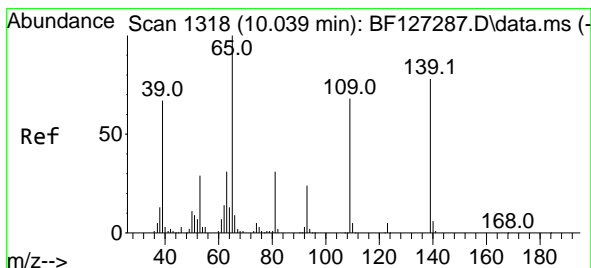
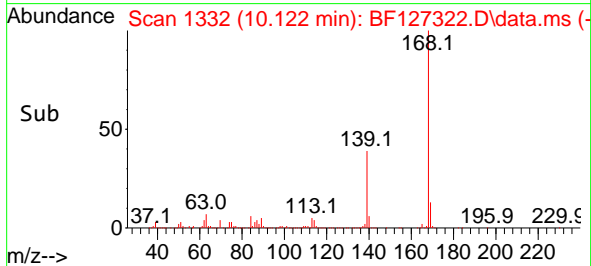
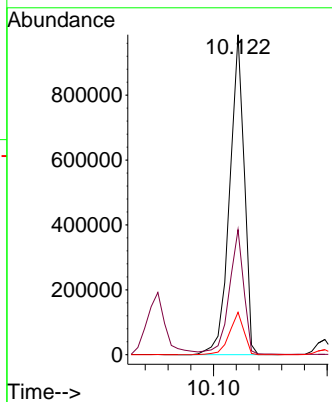
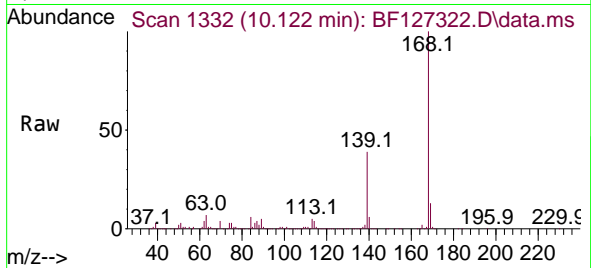




#55
 Dibenzofuran
 Concen: 37.315 ng
 RT: 10.122 min Scan# 11
 Delta R.T. -0.000 min
 Lab File: BF127322.D
 Acq: 15 Mar 2022 13:08

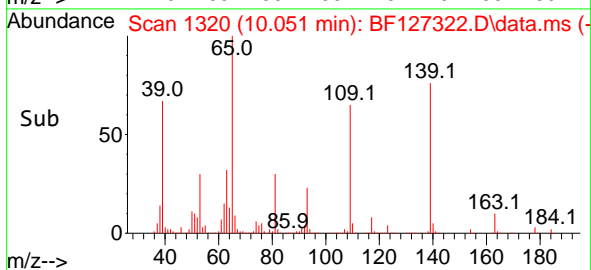
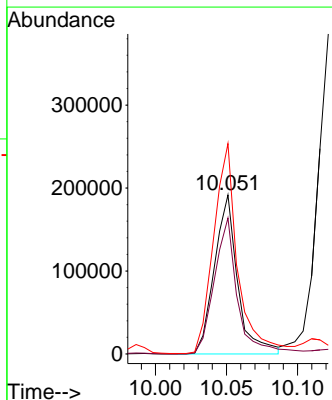
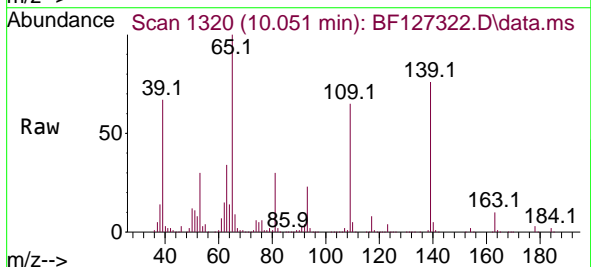
Instrument :
 BNA_F
 ClientSampleId :
 PB143267BS

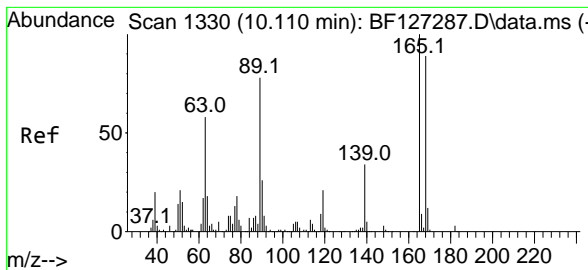
Tgt Ion:168 Resp: 876855
 Ion Ratio Lower Upper
 168 100
 139 39.1 30.6 46.0
 169 13.2 10.0 15.0



#56
 4-Nitrophenol
 Concen: 80.784 ng
 RT: 10.051 min Scan# 1320
 Delta R.T. 0.012 min
 Lab File: BF127322.D
 Acq: 15 Mar 2022 13:08

Tgt Ion:139 Resp: 218892
 Ion Ratio Lower Upper
 139 100
 109 85.5 44.1 84.1#
 65 132.3 85.5 125.5#



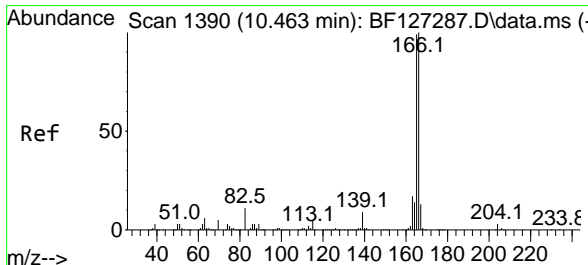
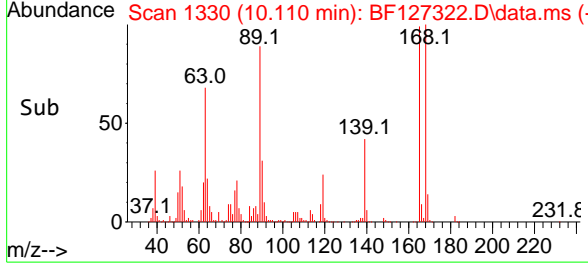
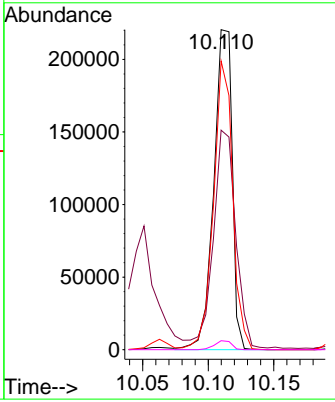
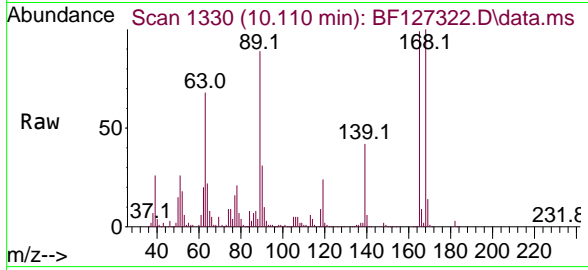


#57
 2,4-Dinitrotoluene
 Concen: 40.039 ng
 RT: 10.110 min Scan# 11
 Delta R.T. -0.000 min
 Lab File: BF127322.D
 Acq: 15 Mar 2022 13:08

Instrument : BNA_F
 Client Sample Id : PB143267BS

Tgt Ion:165 Resp: 215505

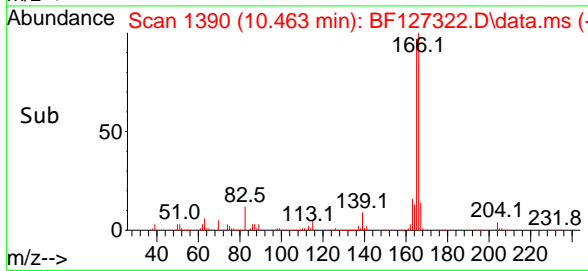
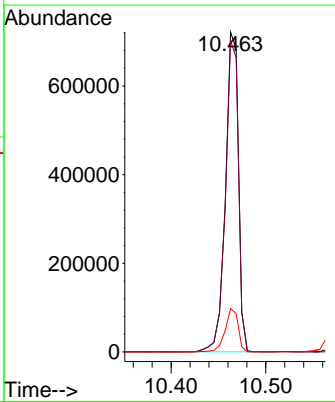
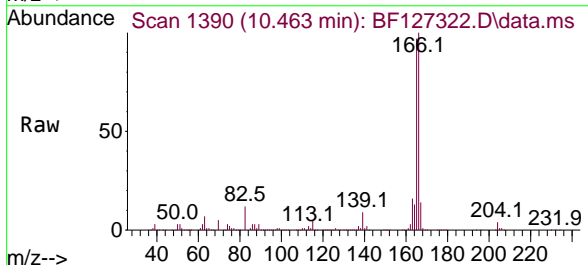
Ion	Ratio	Lower	Upper
165	100		
63	68.6	43.0	64.6#
89	90.2	71.0	106.4
182	2.8	1.6	2.4#

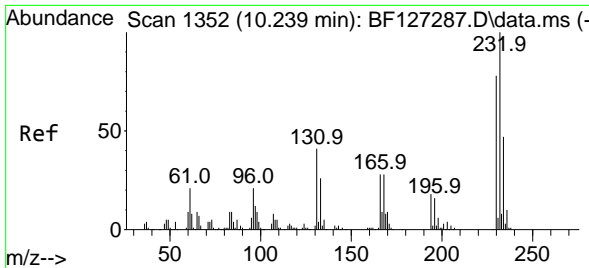


#58
 Fluorene
 Concen: 37.817 ng
 RT: 10.463 min Scan# 1390
 Delta R.T. -0.000 min
 Lab File: BF127322.D
 Acq: 15 Mar 2022 13:08

Tgt Ion:166 Resp: 689074

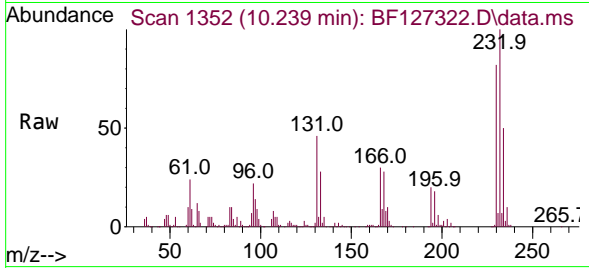
Ion	Ratio	Lower	Upper
166	100		
165	97.3	77.7	116.5
167	13.6	10.7	16.1





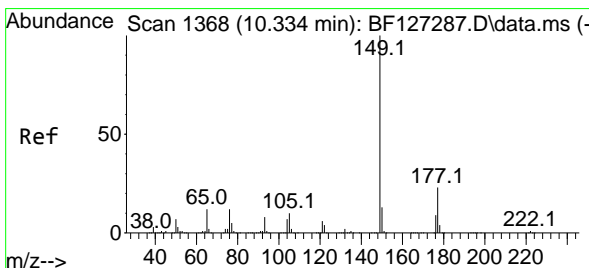
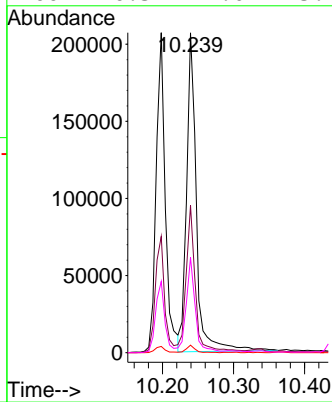
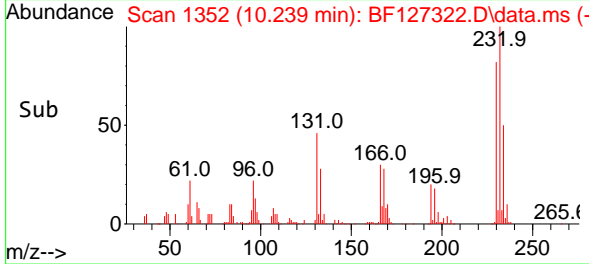
#59
 2,3,4,6-Tetrachlorophenol
 Concen: 40.029 ng
 RT: 10.239 min Scan# 11
 Delta R.T. -0.000 min
 Lab File: BF127322.D
 Acq: 15 Mar 2022 13:08

Instrument :
 BNA_F
 ClientSampleId :
 PB143267BS

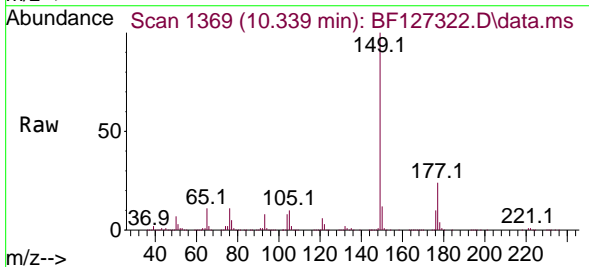


Tgt Ion:232 Resp: 199081

Ion	Ratio	Lower	Upper
232	100		
131	42.4	50.0	75.0#
130	2.1	2.2	3.2#
166	26.3	29.0	43.4#

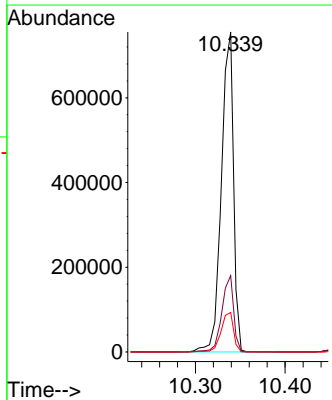
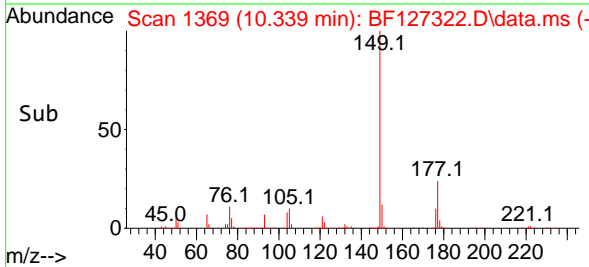


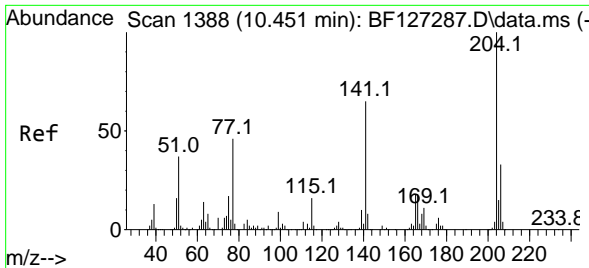
#60
 Diethylphthalate
 Concen: 38.349 ng
 RT: 10.339 min Scan# 1369
 Delta R.T. 0.006 min
 Lab File: BF127322.D
 Acq: 15 Mar 2022 13:08



Tgt Ion:149 Resp: 707417

Ion	Ratio	Lower	Upper
149	100		
177	23.9	16.7	25.1
150	12.4	9.8	14.8

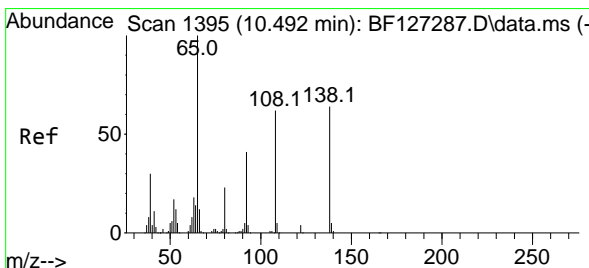
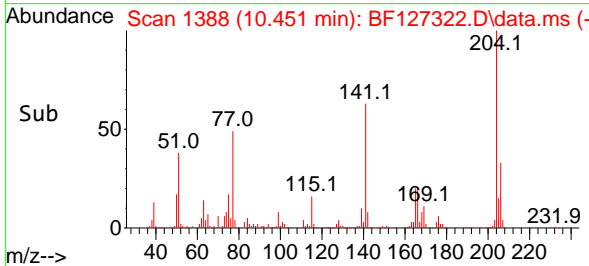
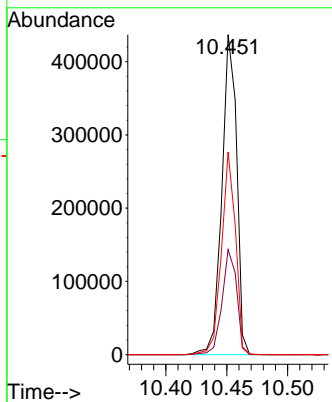
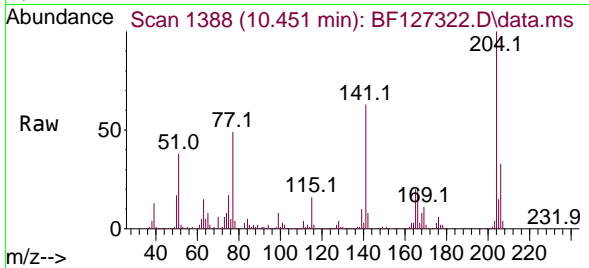




#61
 4-Chlorophenyl-phenylether
 Concen: 37.504 ng
 RT: 10.451 min Scan# 11
 Delta R.T. -0.000 min
 Lab File: BF127322.D
 Acq: 15 Mar 2022 13:08

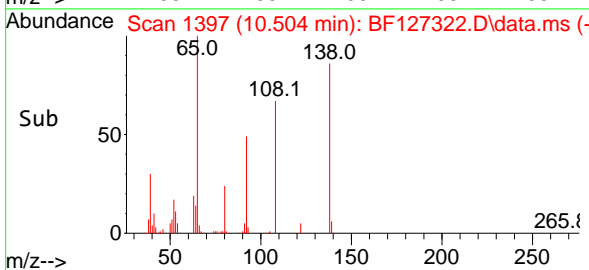
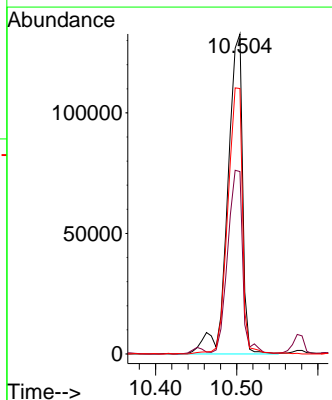
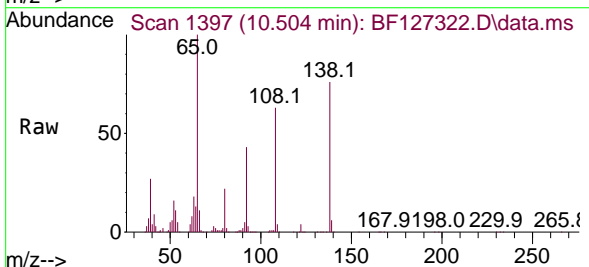
Instrument :
 BNA_F
 ClientSampleId :
 PB143267BS

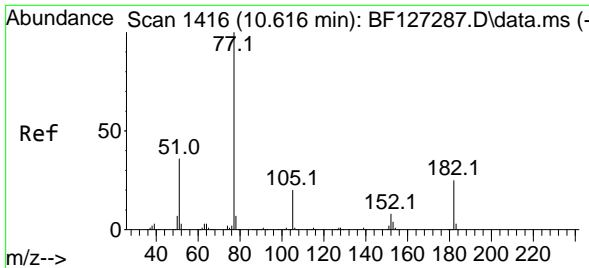
Tgt Ion	Resp	Lower	Upper
204	370339		
206	32.8	26.3	39.5
141	63.4	59.0	88.6



#62
 4-Nitroaniline
 Concen: 38.017 ng
 RT: 10.504 min Scan# 1397
 Delta R.T. 0.012 min
 Lab File: BF127322.D
 Acq: 15 Mar 2022 13:08

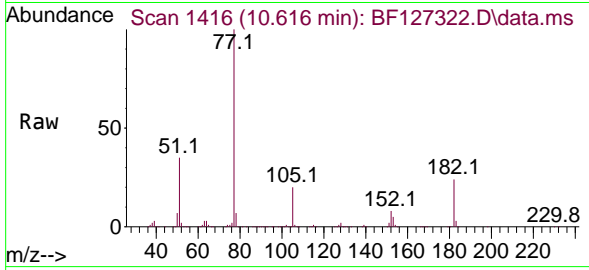
Tgt Ion	Resp	Lower	Upper
138	168885		
92	57.0	36.2	76.2
108	82.9	46.7	86.7





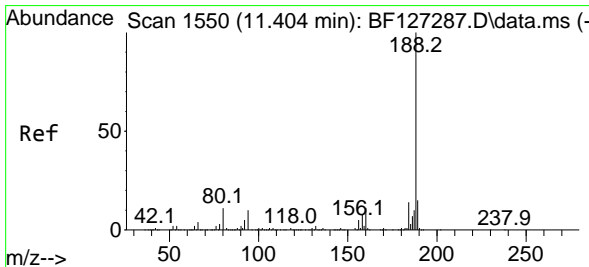
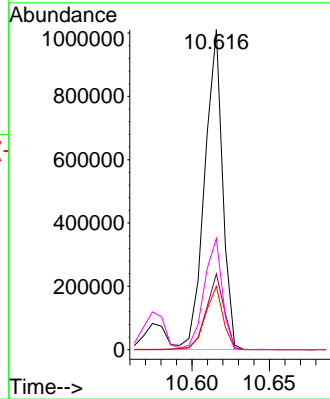
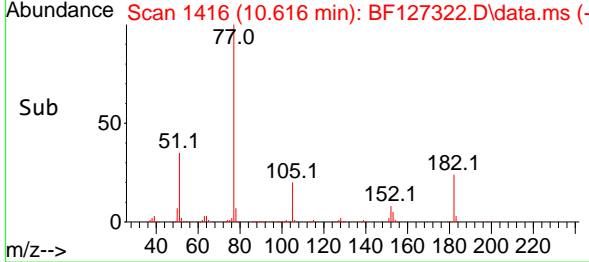
#63
 Azobenzene
 Concen: 38.011 ng
 RT: 10.616 min Scan# 1416
 Delta R.T. -0.000 min
 Lab File: BF127322.D
 Acq: 15 Mar 2022 13:08

Instrument : BNA_F
 ClientSampleId : PB143267BS

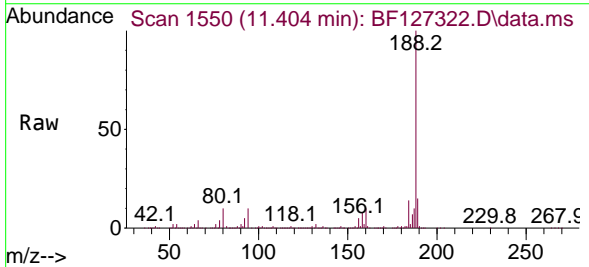


Tgt Ion: 77 Resp: 806019

Ion	Ratio	Lower	Upper
77	100		
182	23.7	0.0	39.0
105	19.8	3.2	43.2
51	34.7	8.2	48.2

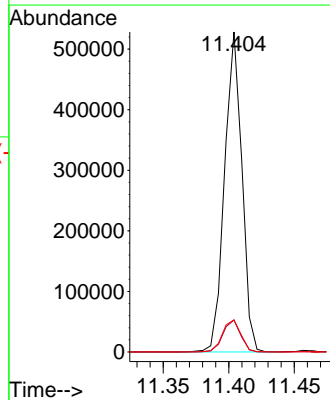
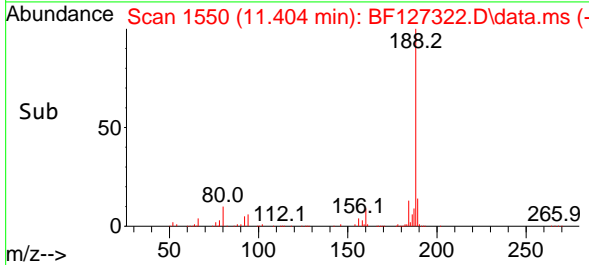


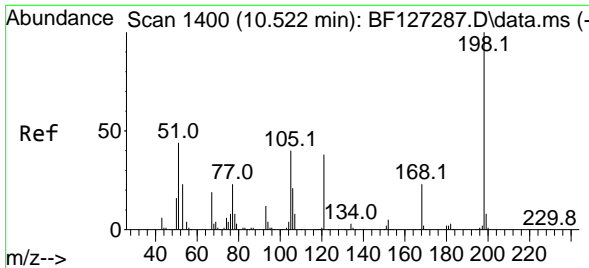
#64
 Phenanthrene-d10
 Concen: 20.000 ng
 RT: 11.404 min Scan# 1550
 Delta R.T. -0.000 min
 Lab File: BF127322.D
 Acq: 15 Mar 2022 13:08



Tgt Ion: 188 Resp: 484107

Ion	Ratio	Lower	Upper
188	100		
94	9.9	10.1	15.1#
80	10.0	11.8	17.6#



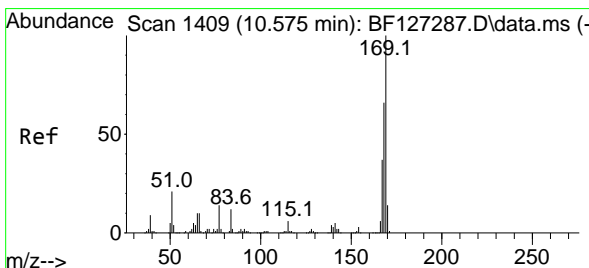
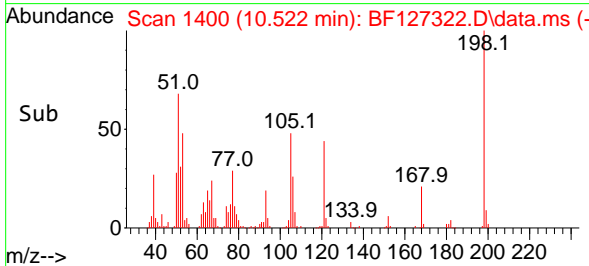
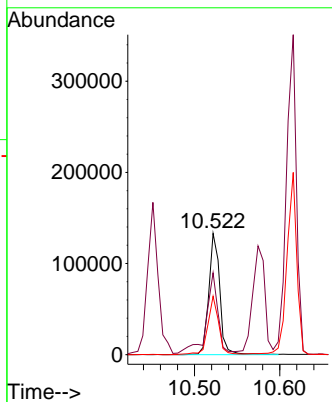
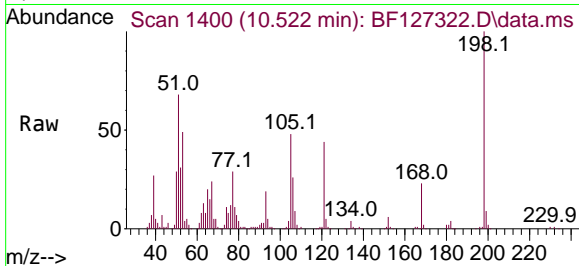


#65
 4,6-Dinitro-2-methylphenol
 Concen: 39.922 ng
 RT: 10.522 min Scan# 1410
 Delta R.T. -0.000 min
 Lab File: BF127322.D
 Acq: 15 Mar 2022 13:08

Instrument :
 BNA_F
 ClientSampleId :
 PB143267BS

Tgt Ion:198 Resp: 119162

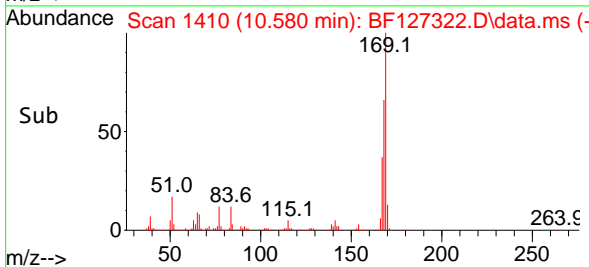
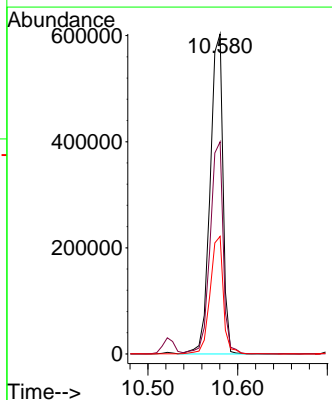
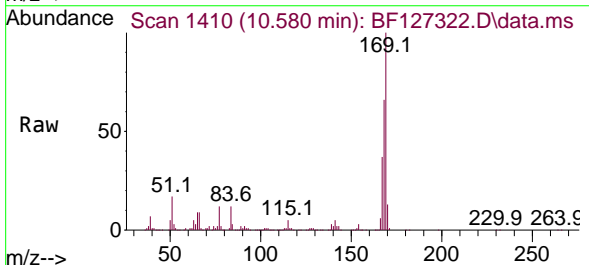
Ion	Ratio	Lower	Upper
198	100		
51	67.5	32.0	72.0
105	48.1	32.7	72.7

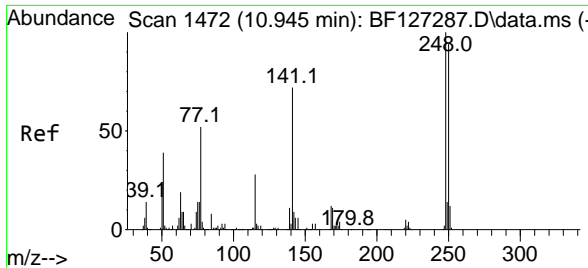


#66
 n-Nitrosodiphenylamine
 Concen: 39.712 ng
 RT: 10.580 min Scan# 1410
 Delta R.T. 0.006 min
 Lab File: BF127322.D
 Acq: 15 Mar 2022 13:08

Tgt Ion:169 Resp: 597075

Ion	Ratio	Lower	Upper
169	100		
168	66.3	53.4	80.0
167	36.7	29.4	44.0



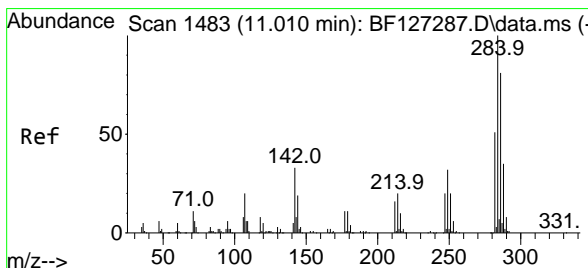
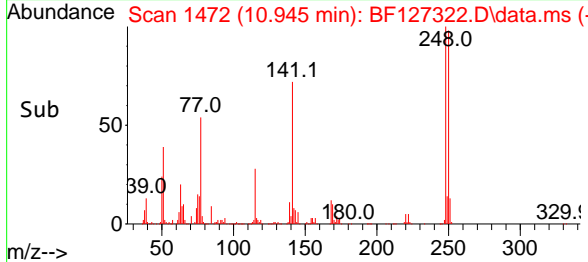
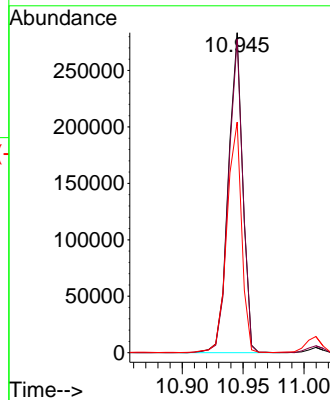
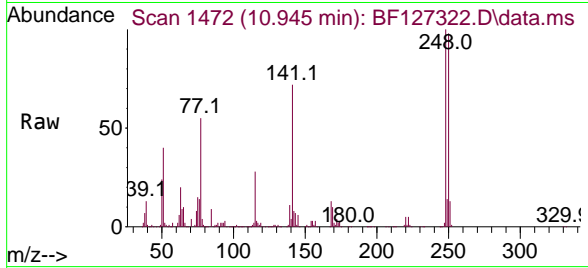


#67
 4-Bromophenyl-phenylether
 Concen: 39.815 ng
 RT: 10.945 min Scan# 1472
 Delta R.T. -0.000 min
 Lab File: BF127322.D
 Acq: 15 Mar 2022 13:08

Instrument :
 BNA_F
 ClientSampleId :
 PB143267BS

Tgt Ion:248 Resp: 232345

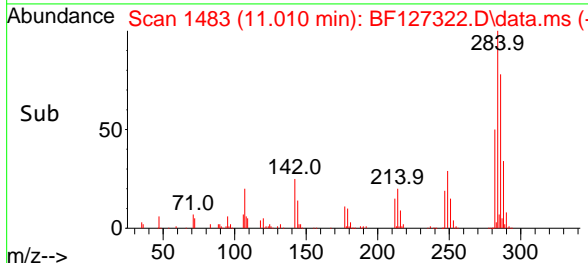
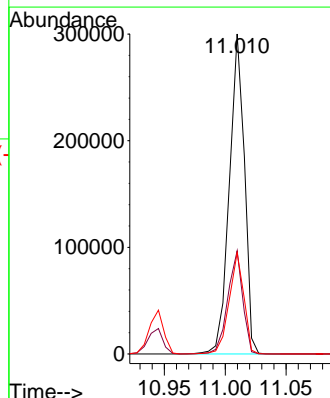
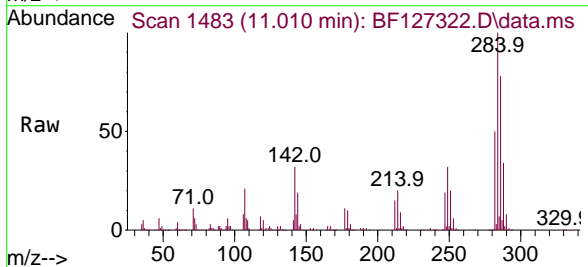
Ion	Ratio	Lower	Upper
248	100		
250	97.9	76.2	114.4
141	72.1	66.2	99.4

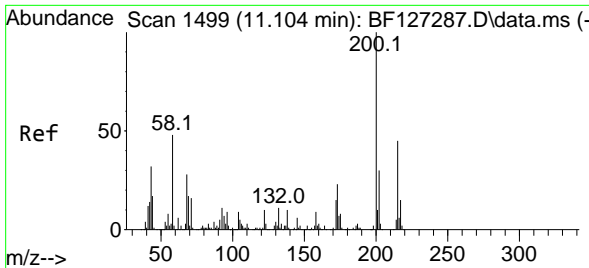


#68
 Hexachlorobenzene
 Concen: 40.596 ng
 RT: 11.010 min Scan# 1483
 Delta R.T. -0.000 min
 Lab File: BF127322.D
 Acq: 15 Mar 2022 13:08

Tgt Ion:284 Resp: 258187

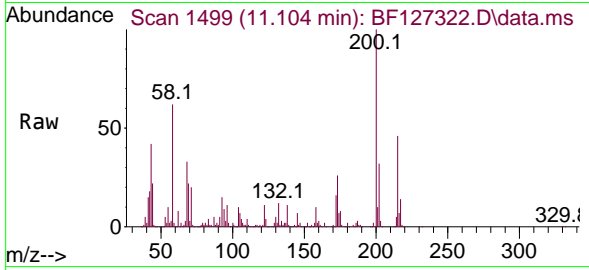
Ion	Ratio	Lower	Upper
284	100		
142	32.2	30.7	46.1
249	31.7	21.1	31.7



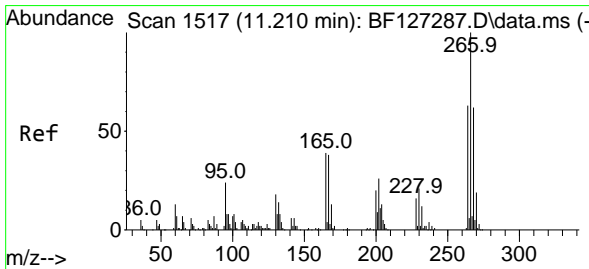
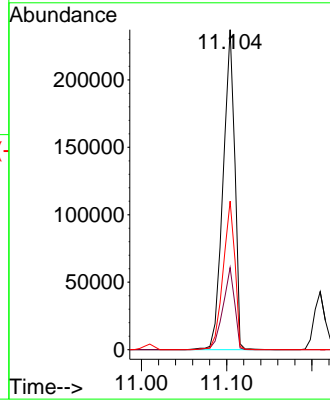
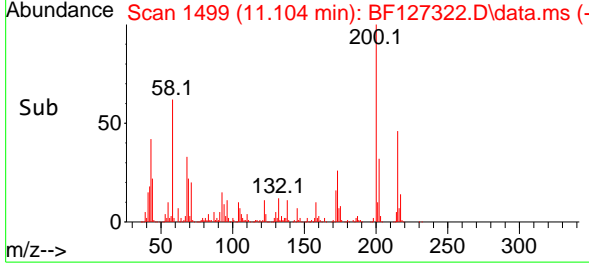


#69
 Atrazine
 Concen: 43.573 ng
 RT: 11.104 min Scan# 1499
 Delta R.T. -0.000 min
 Lab File: BF127322.D
 Acq: 15 Mar 2022 13:08

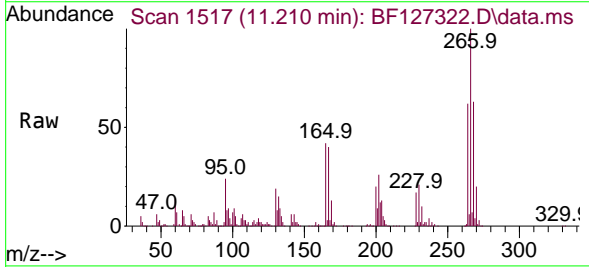
Instrument :
 BNA_F
 ClientSampleId :
 PB143267BS



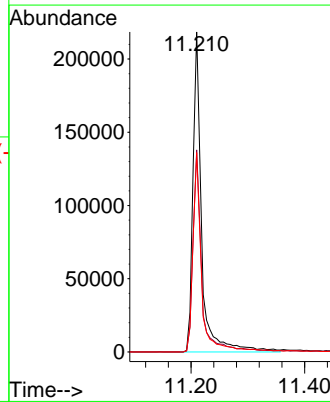
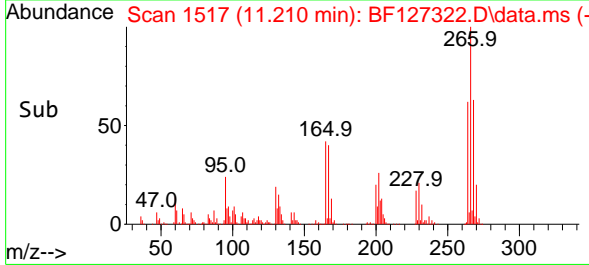
Tgt Ion:200 Resp: 226063
 Ion Ratio Lower Upper
 200 100
 173 25.6 9.2 49.2
 215 46.4 23.2 63.2

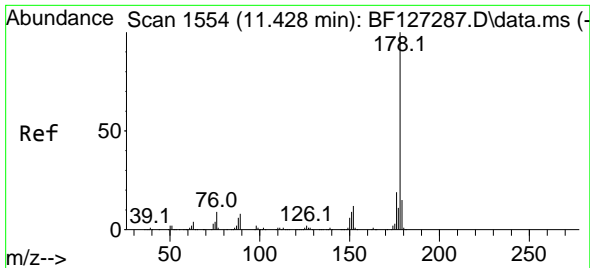


#70
 Pentachlorophenol
 Concen: 90.930 ng
 RT: 11.210 min Scan# 1517
 Delta R.T. -0.000 min
 Lab File: BF127322.D
 Acq: 15 Mar 2022 13:08



Tgt Ion:266 Resp: 233493
 Ion Ratio Lower Upper
 266 100
 268 63.2 52.3 78.5
 264 62.3 50.4 75.6



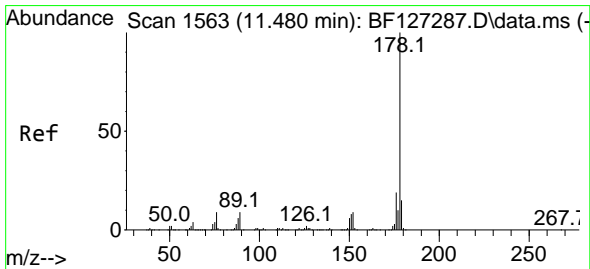
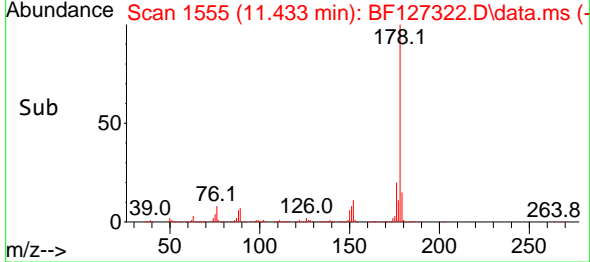
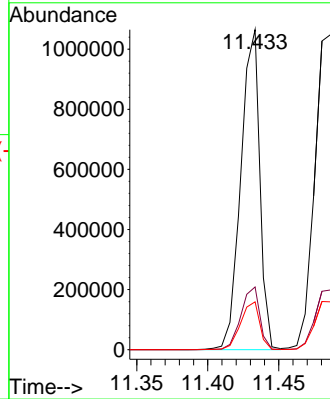
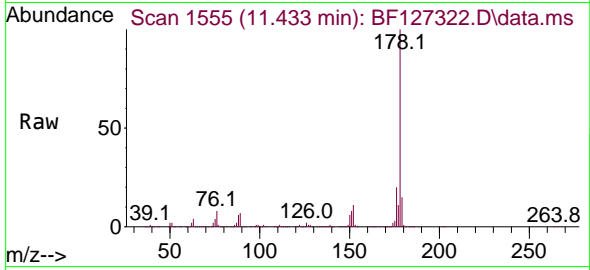


#71
 Phenanthrene
 Concen: 38.780 ng
 RT: 11.433 min Scan# 11
 Delta R.T. 0.006 min
 Lab File: BF127322.D
 Acq: 15 Mar 2022 13:08

Instrument :
 BNA_F
 ClientSampleId :
 PB143267BS

Tgt Ion:178 Resp: 991036

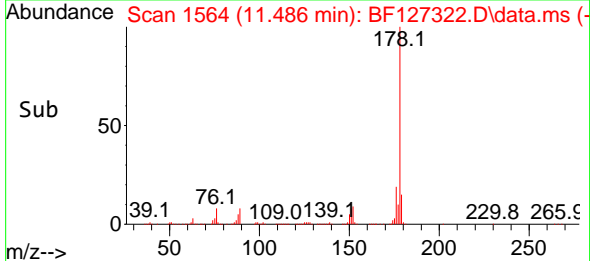
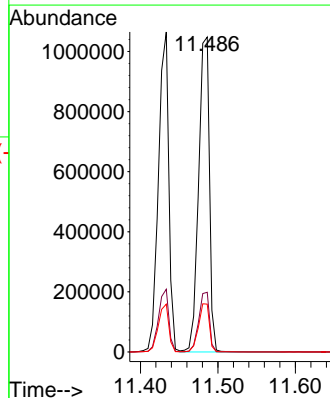
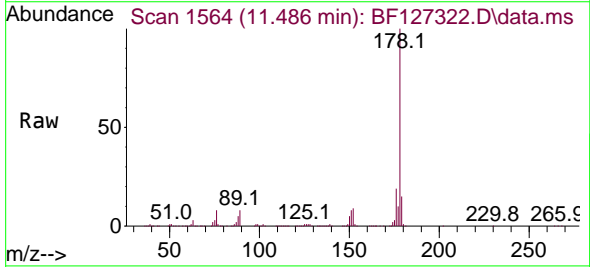
Ion	Ratio	Lower	Upper
178	100		
176	19.6	15.7	23.5
179	14.9	12.3	18.5

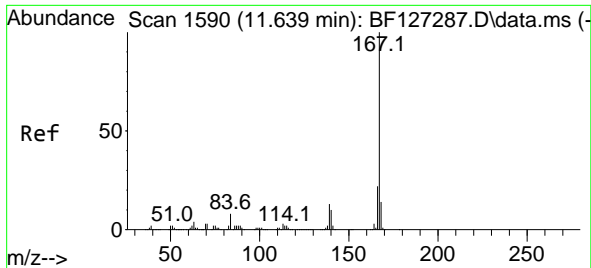


#72
 Anthracene
 Concen: 40.162 ng
 RT: 11.486 min Scan# 1564
 Delta R.T. 0.006 min
 Lab File: BF127322.D
 Acq: 15 Mar 2022 13:08

Tgt Ion:178 Resp: 1016437

Ion	Ratio	Lower	Upper
178	100		
176	19.0	15.0	22.6
179	15.2	12.5	18.7





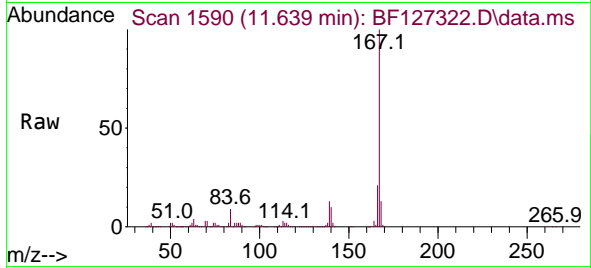
#73
 Carbazole
 Concen: 37.783 ng
 RT: 11.639 min Scan# 11
 Delta R.T. -0.000 min
 Lab File: BF127322.D
 Acq: 15 Mar 2022 13:08

Instrument :

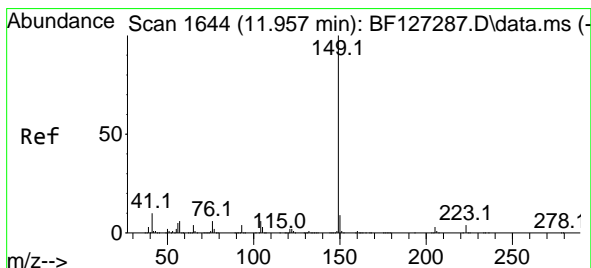
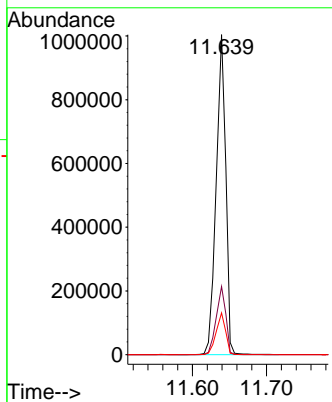
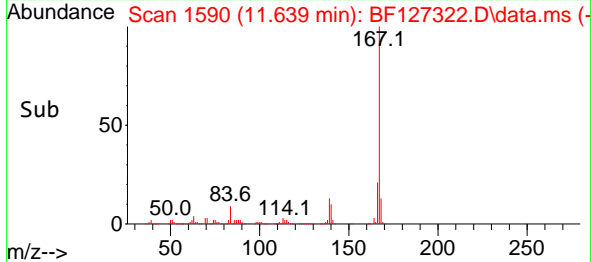
BNA_F

Client Sample Id :

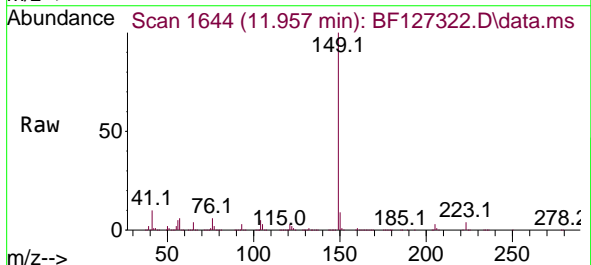
PB143267BS



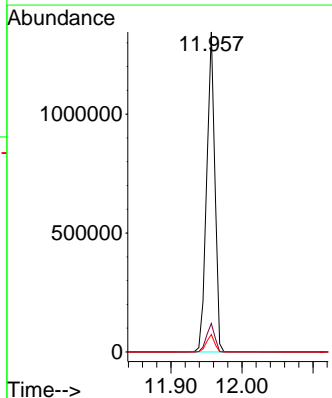
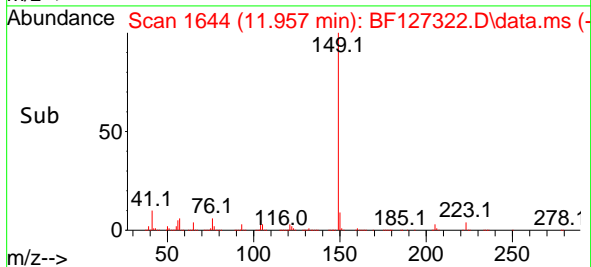
Tgt Ion:167 Resp: 900478
 Ion Ratio Lower Upper
 167 100
 166 21.3 16.9 25.3
 139 13.1 11.3 16.9

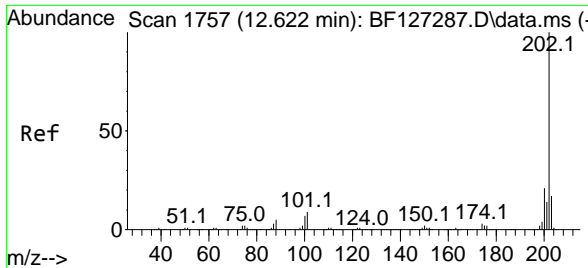


#74
 Di-n-butylphthalate
 Concen: 38.802 ng
 RT: 11.957 min Scan# 1644
 Delta R.T. -0.000 min
 Lab File: BF127322.D
 Acq: 15 Mar 2022 13:08



Tgt Ion:149 Resp: 1081651
 Ion Ratio Lower Upper
 149 100
 150 8.9 7.2 10.8
 104 5.5 4.2 6.2



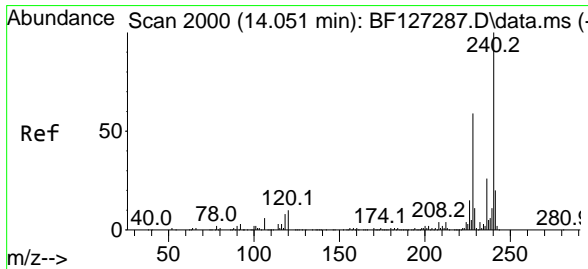
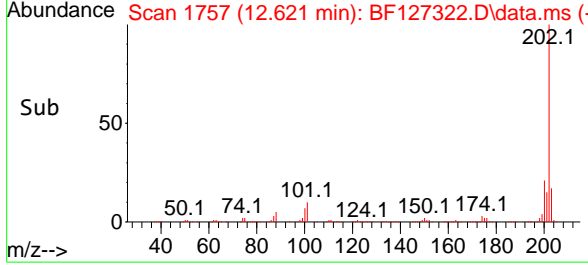
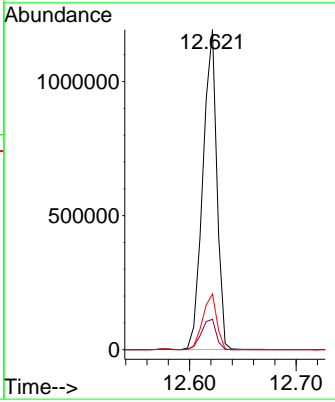
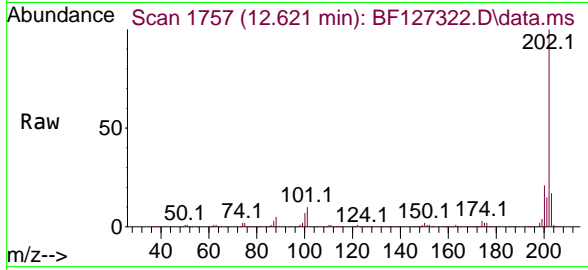


#75
 Fluoranthene
 Concen: 38.115 ng
 RT: 12.621 min Scan# 1757
 Delta R.T. -0.000 min
 Lab File: BF127322.D
 Acq: 15 Mar 2022 13:08

Instrument : BNA_F
 ClientSampleId : PB143267BS

Tgt Ion: 202 Resp: 1089094

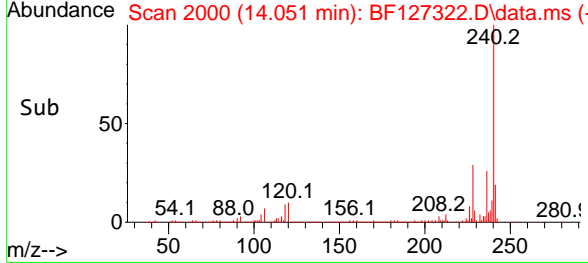
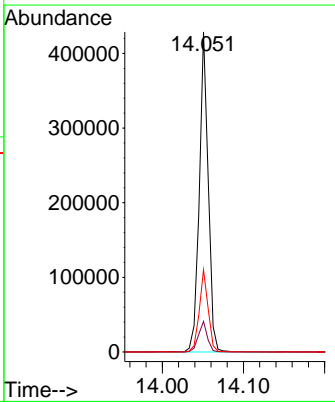
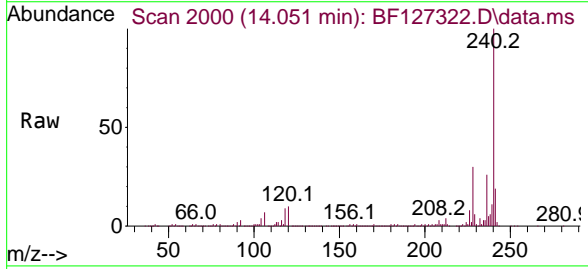
Ion	Ratio	Lower	Upper
202	100		
101	9.5	0.0	35.7
203	17.4	0.0	37.1

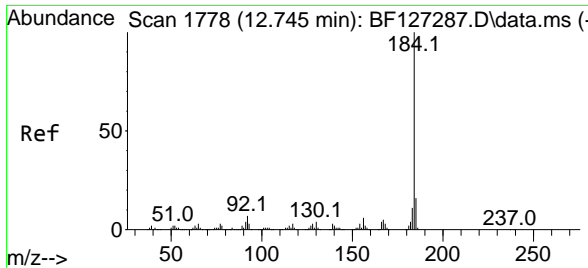


#76
 Chrysene-d12
 Concen: 20.000 ng
 RT: 14.051 min Scan# 2000
 Delta R.T. -0.000 min
 Lab File: BF127322.D
 Acq: 15 Mar 2022 13:08

Tgt Ion: 240 Resp: 325994

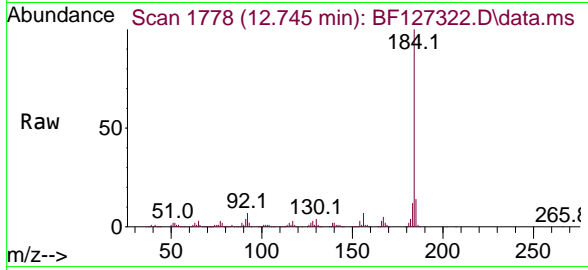
Ion	Ratio	Lower	Upper
240	100		
120	9.6	14.4	21.6#
236	25.7	20.5	30.7





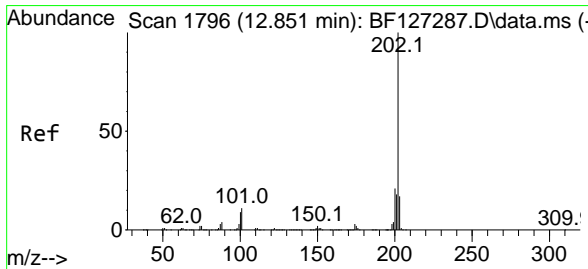
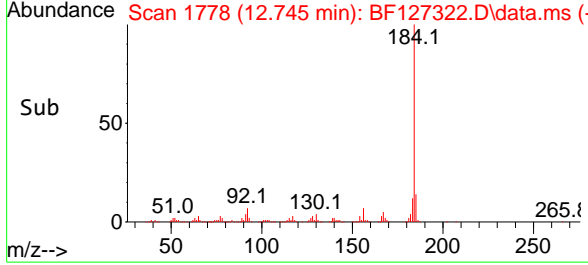
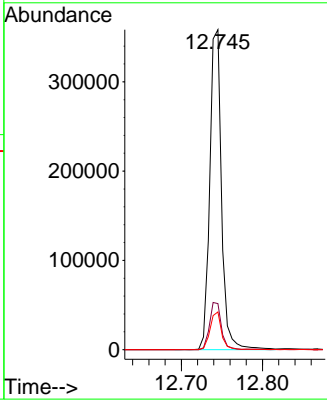
#77
 Benzidine
 Concen: 43.322 ng
 RT: 12.745 min Scan# 1778
 Delta R.T. -0.000 min
 Lab File: BF127322.D
 Acq: 15 Mar 2022 13:08

Instrument : BNA_F
 ClientSampleId : PB143267BS



Tgt Ion:184 Resp: 359136

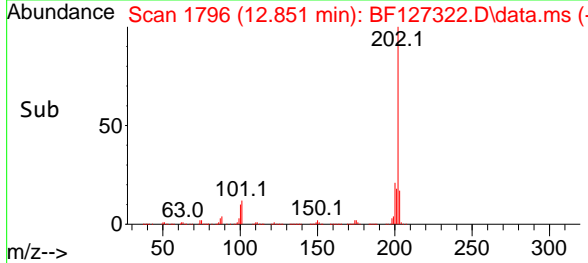
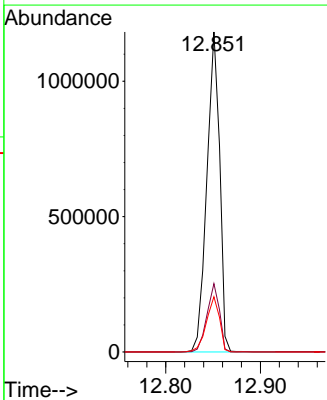
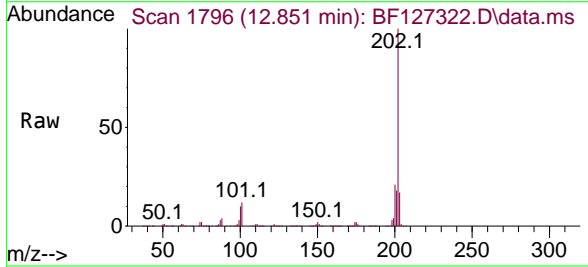
Ion	Ratio	Lower	Upper
184	100		
185	14.4	11.8	17.8
183	11.8	8.2	12.2

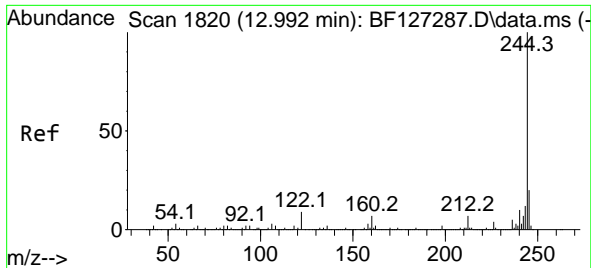


#78
 Pyrene
 Concen: 43.629 ng
 RT: 12.851 min Scan# 1796
 Delta R.T. -0.000 min
 Lab File: BF127322.D
 Acq: 15 Mar 2022 13:08

Tgt Ion:202 Resp: 1107820

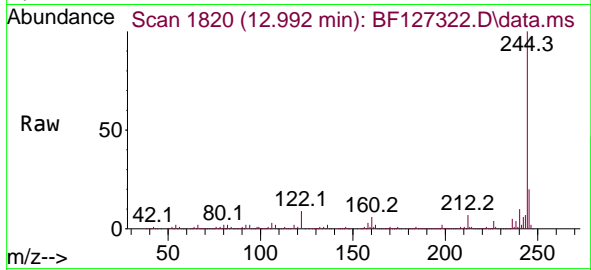
Ion	Ratio	Lower	Upper
202	100		
200	21.3	16.6	24.8
203	17.3	13.8	20.8



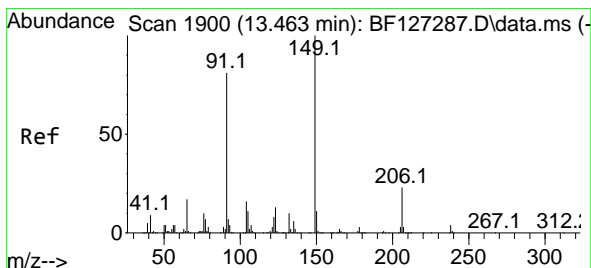
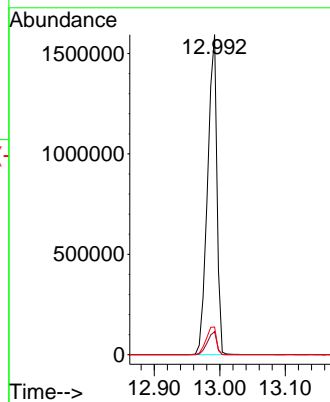
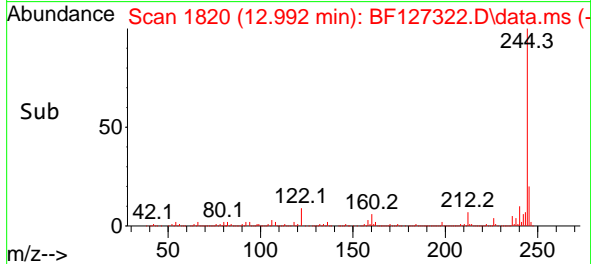


#79
 Terphenyl-d14
 Concen: 83.574 ng
 RT: 12.992 min Scan# 1820
 Delta R.T. -0.000 min
 Lab File: BF127322.D
 Acq: 15 Mar 2022 13:08

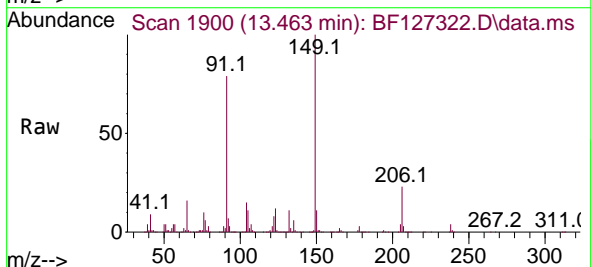
Instrument :
 BNA_F
 ClientSampleId :
 PB143267BS



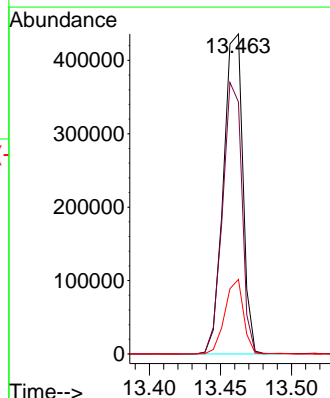
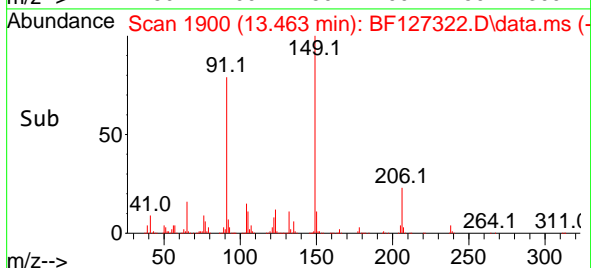
Tgt Ion:244 Resp: 1582201
 Ion Ratio Lower Upper
 244 100
 212 7.2 5.0 7.4
 122 8.7 13.3 19.9#

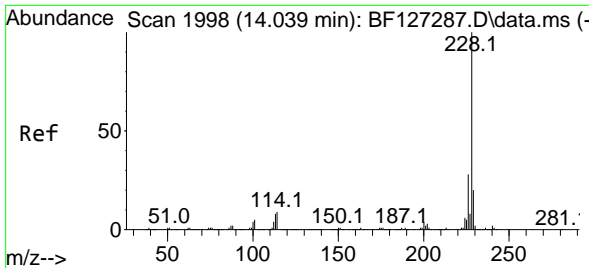


#80
 Butylbenzylphthalate
 Concen: 42.435 ng
 RT: 13.463 min Scan# 1900
 Delta R.T. -0.000 min
 Lab File: BF127322.D
 Acq: 15 Mar 2022 13:08



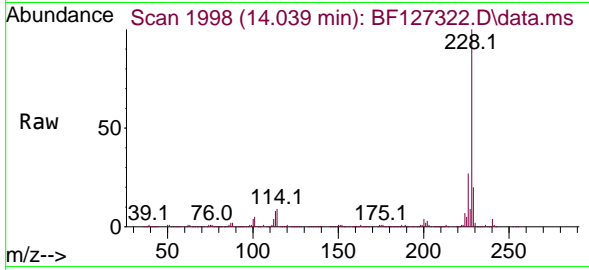
Tgt Ion:149 Resp: 414687
 Ion Ratio Lower Upper
 149 100
 91 78.7 70.5 105.7
 206 23.3 12.6 19.0#





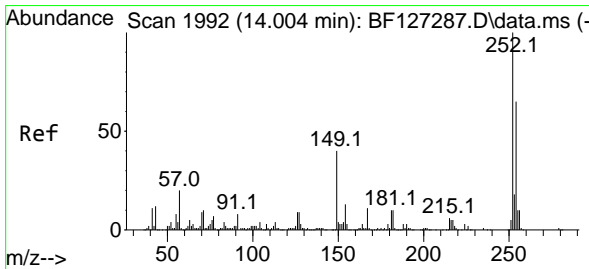
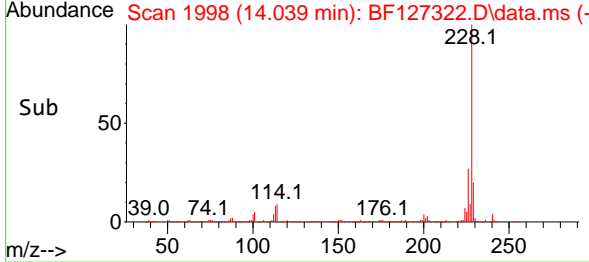
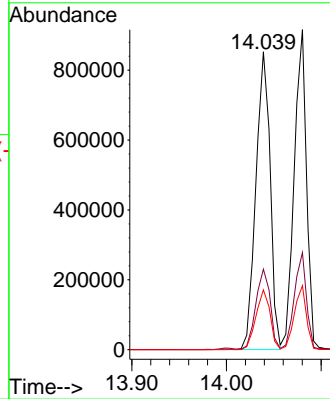
#81
 Benzo(a)anthracene
 Concen: 40.753 ng
 RT: 14.039 min Scan# 1998
 Delta R.T. -0.000 min
 Lab File: BF127322.D
 Acq: 15 Mar 2022 13:08

Instrument : BNA_F
 ClientSampleId : PB143267BS



Tgt Ion:228 Resp: 894528

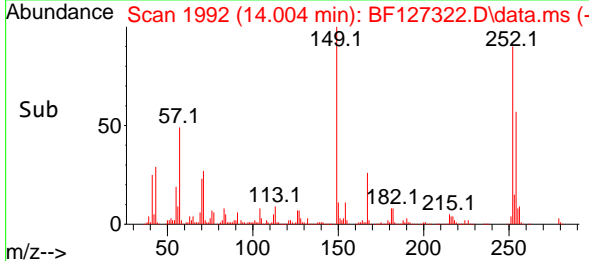
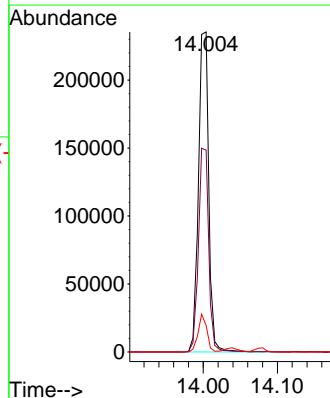
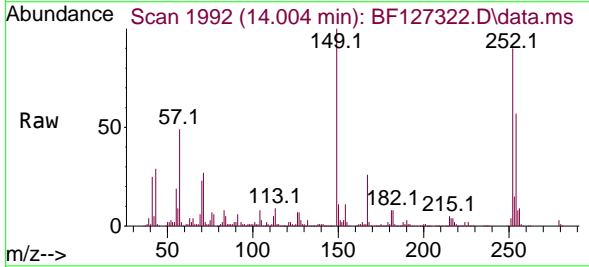
Ion	Ratio	Lower	Upper
228	100		
226	27.0	21.4	32.0
229	20.1	15.4	23.2

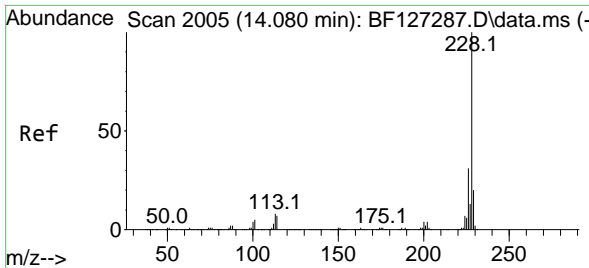


#82
 3,3'-Dichlorobenzidine
 Concen: 33.060 ng
 RT: 14.004 min Scan# 1992
 Delta R.T. -0.000 min
 Lab File: BF127322.D
 Acq: 15 Mar 2022 13:08

Tgt Ion:252 Resp: 225629

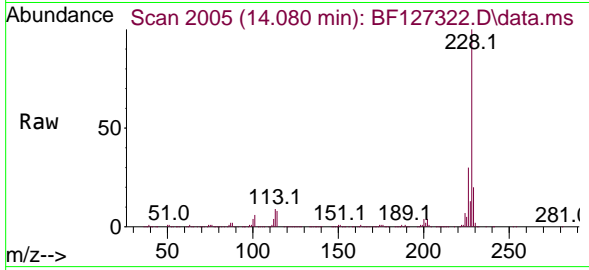
Ion	Ratio	Lower	Upper
252	100		
254	63.1	51.0	76.4
126	8.3	13.4	20.0



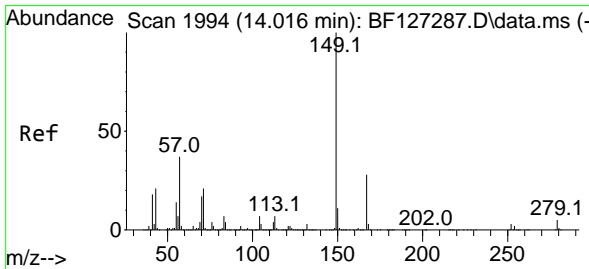
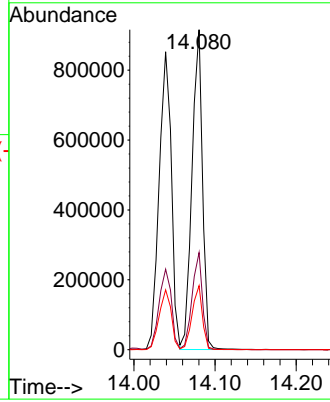
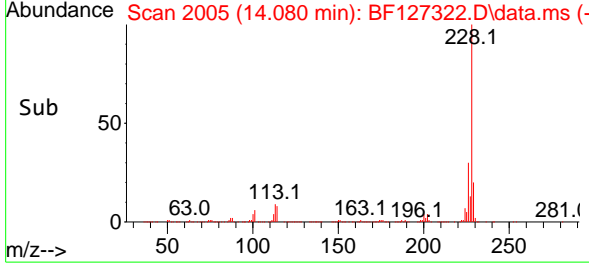


#83
 Chrysene
 Concen: 40.459 ng
 RT: 14.080 min Scan# 2005
 Delta R.T. -0.000 min
 Lab File: BF127322.D
 Acq: 15 Mar 2022 13:08

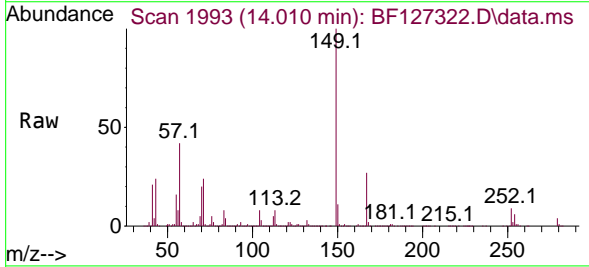
Instrument : BNA_F
 ClientSampleId : PB143267BS



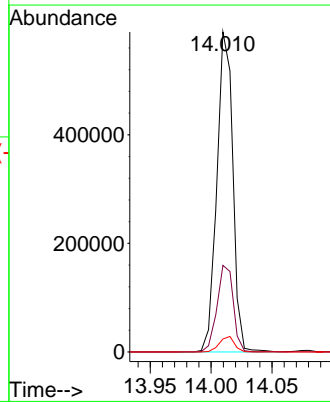
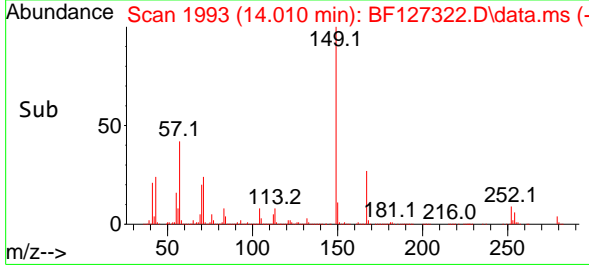
Tgt Ion:228 Resp: 826005
 Ion Ratio Lower Upper
 228 100
 226 30.4 23.7 35.5
 229 20.0 15.5 23.3

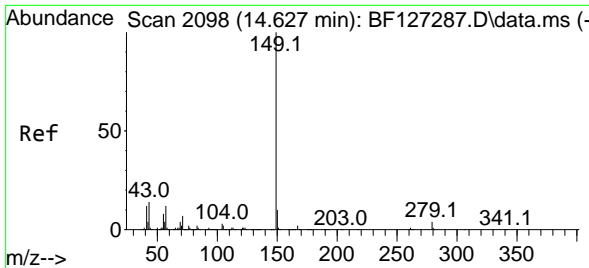


#84
 Bis(2-ethylhexyl)phthalate
 Concen: 40.994 ng
 RT: 14.010 min Scan# 1993
 Delta R.T. -0.006 min
 Lab File: BF127322.D
 Acq: 15 Mar 2022 13:08



Tgt Ion:149 Resp: 539259
 Ion Ratio Lower Upper
 149 100
 167 27.1 21.4 32.2
 279 4.1 2.4 3.6#



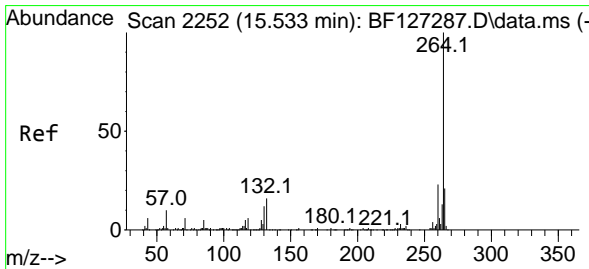
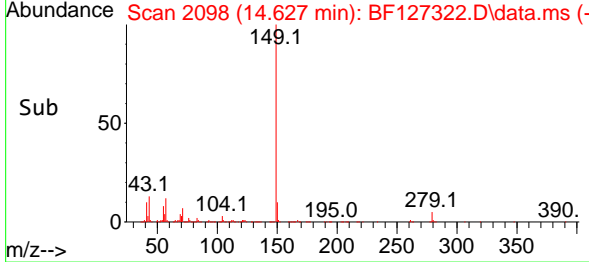
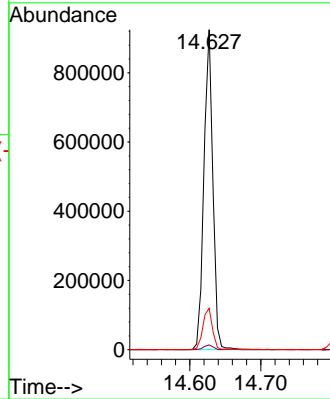
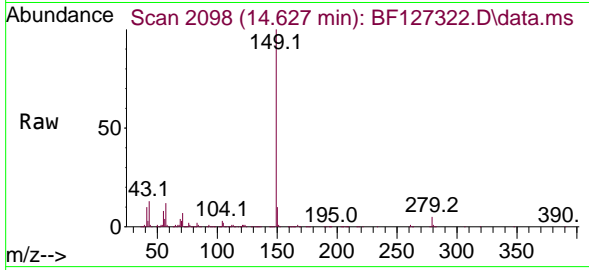


#85
 Di-n-octyl phthalate
 Concen: 40.665 ng
 RT: 14.627 min Scan# 20
 Delta R.T. -0.000 min
 Lab File: BF127322.D
 Acq: 15 Mar 2022 13:08

Instrument :
 BNA_F
 ClientSampleId :
 PB143267BS

Tgt Ion:149 Resp: 809652

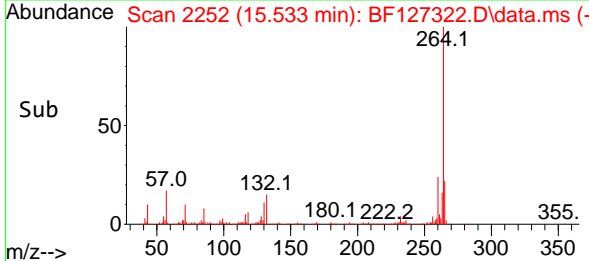
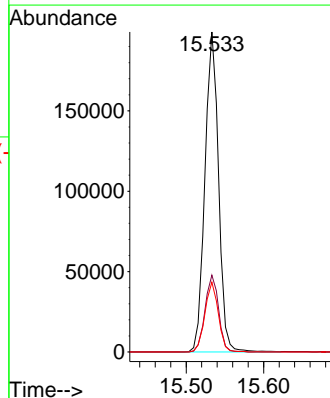
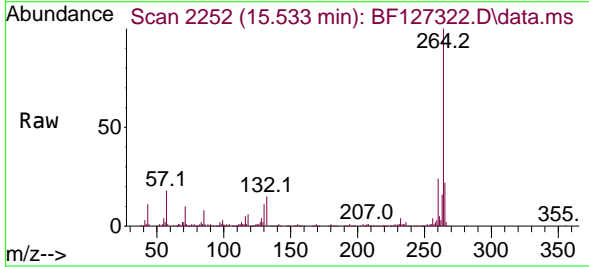
Ion	Ratio	Lower	Upper
149	100		
167	1.6	1.1	1.7
43	13.9	9.9	14.9

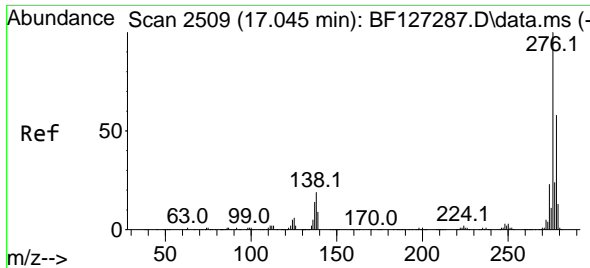


#86
 Perylene-d12
 Concen: 20.000 ng
 RT: 15.533 min Scan# 2252
 Delta R.T. -0.000 min
 Lab File: BF127322.D
 Acq: 15 Mar 2022 13:08

Tgt Ion:264 Resp: 242935

Ion	Ratio	Lower	Upper
264	100		
260	24.0	19.2	28.8
265	21.8	17.4	26.2





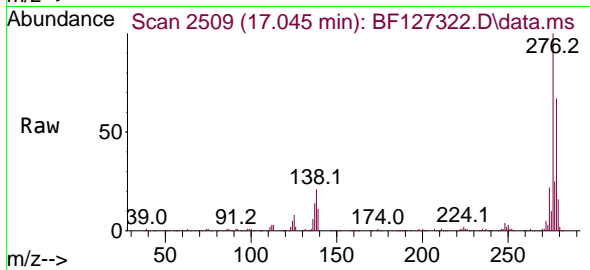
#87
 Indeno(1,2,3-cd)pyrene
 Concen: 45.921 ng
 RT: 17.045 min Scan# 2178
 Delta R.T. -0.000 min
 Lab File: BF127322.D
 Acq: 15 Mar 2022 13:08

Instrument :

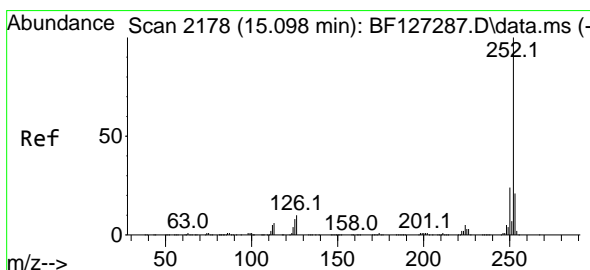
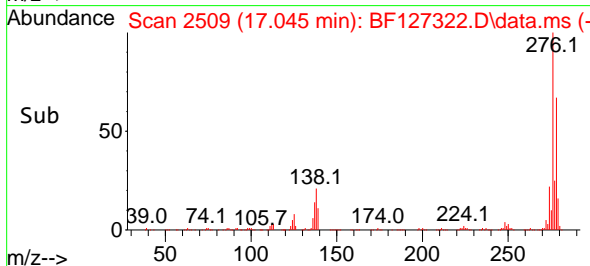
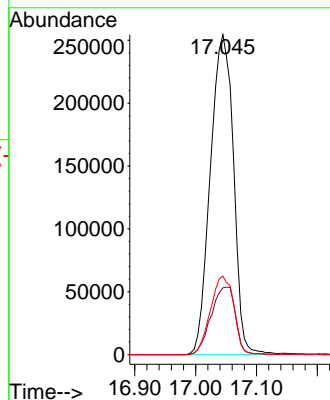
BNA_F

Client Sample Id :

PB143267BS

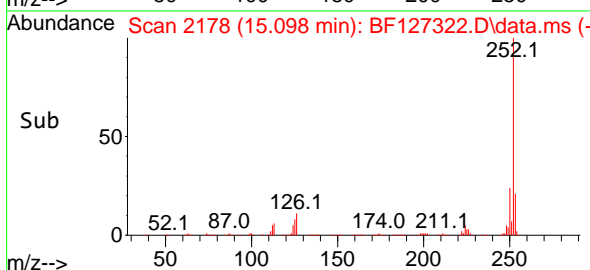
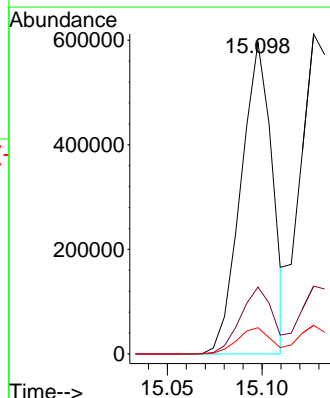
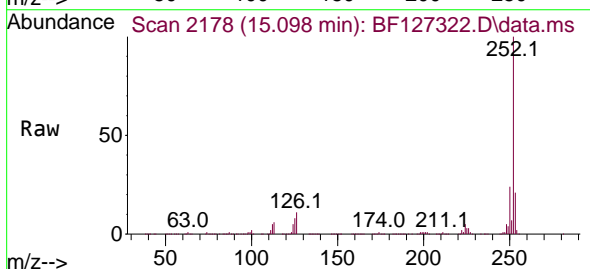


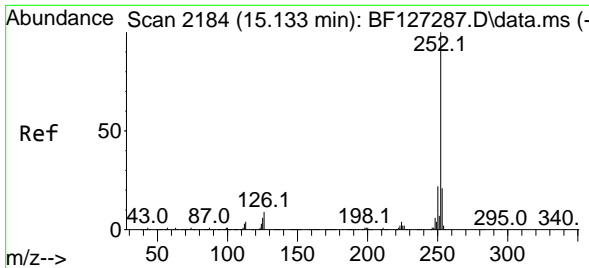
Tgt Ion: 276 Resp: 672046
 Ion Ratio Lower Upper
 276 100
 138 22.3 29.2 43.8#
 277 25.1 19.8 29.8



#88
 Benzo(b)fluoranthene
 Concen: 43.192 ng
 RT: 15.098 min Scan# 2178
 Delta R.T. -0.000 min
 Lab File: BF127322.D
 Acq: 15 Mar 2022 13:08

Tgt Ion: 252 Resp: 688742
 Ion Ratio Lower Upper
 252 100
 253 21.5 17.8 26.8
 125 8.4 12.4 18.6#



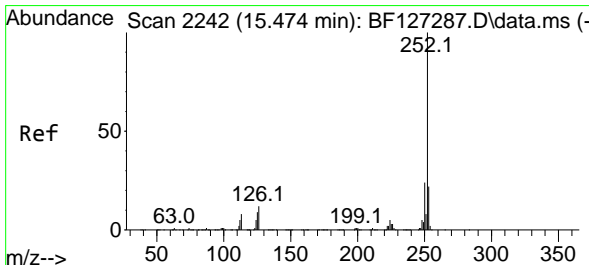
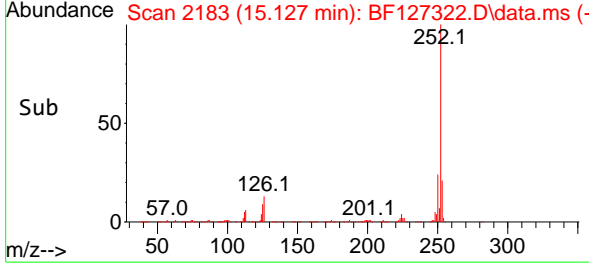
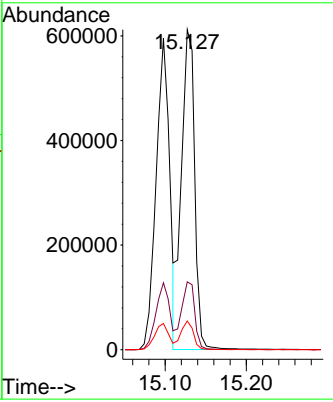
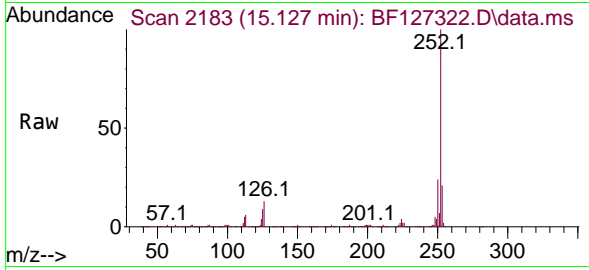


#89
 Benzo(k)fluoranthene
 Concen: 46.176 ng
 RT: 15.127 min Scan# 2183
 Delta R.T. -0.006 min
 Lab File: BF127322.D
 Acq: 15 Mar 2022 13:08

Instrument : BNA_F
 Client Sample Id : PB143267BS

Tgt Ion:252 Resp: 692344

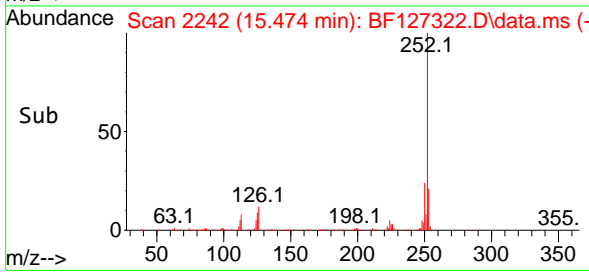
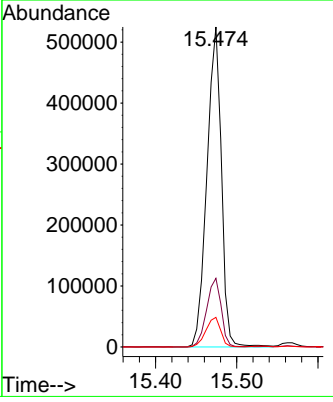
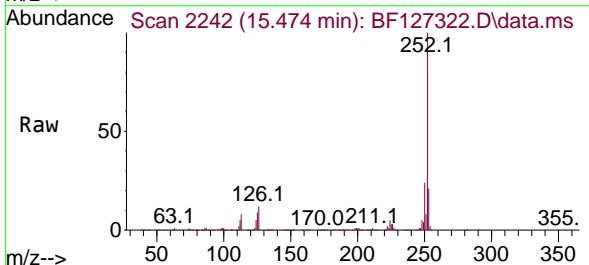
Ion	Ratio	Lower	Upper
252	100		
253	21.2	17.5	26.3
125	8.9	11.8	17.6#

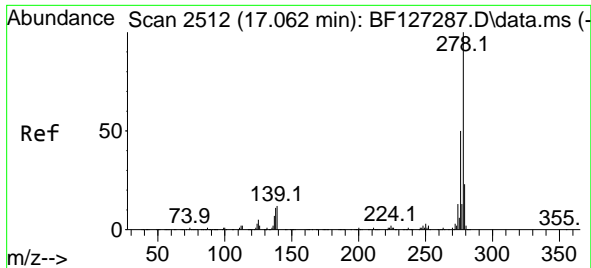


#90
 Benzo(a)pyrene
 Concen: 51.716 ng
 RT: 15.474 min Scan# 2242
 Delta R.T. -0.000 min
 Lab File: BF127322.D
 Acq: 15 Mar 2022 13:08

Tgt Ion:252 Resp: 649402

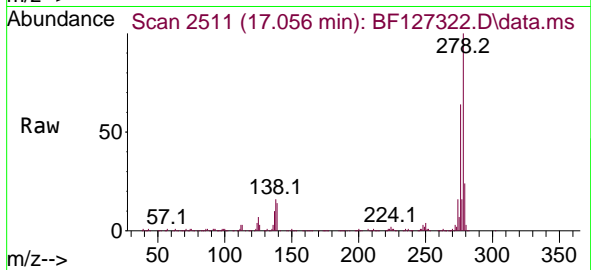
Ion	Ratio	Lower	Upper
252	100		
253	21.5	17.1	25.7
125	9.3	13.0	19.6#



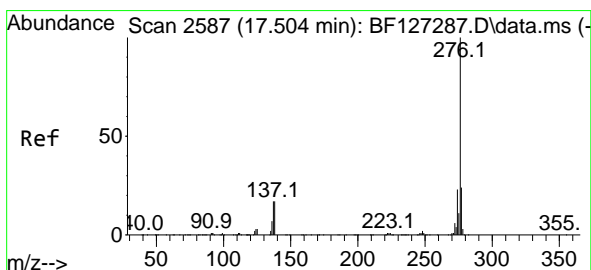
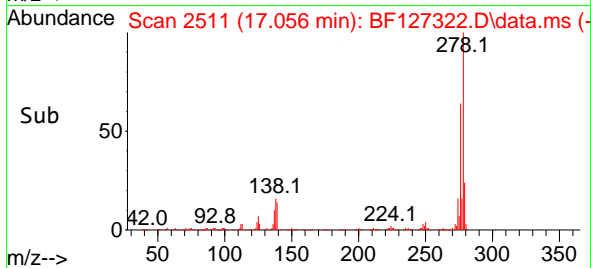
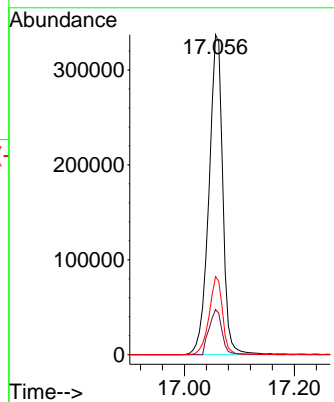


#91
 Dibenzo(a,h)anthracene
 Concen: 48.394 ng
 RT: 17.056 min Scan# 2511
 Delta R.T. -0.006 min
 Lab File: BF127322.D
 Acq: 15 Mar 2022 13:08

Instrument :
 BNA_F
 ClientSampleId :
 PB143267BS



Tgt Ion:278 Resp: 589460
 Ion Ratio Lower Upper
 278 100
 139 14.1 18.0 27.0#
 279 24.4 18.6 27.8



#92
 Benzo(g,h,i)perylene
 Concen: 50.045 ng
 RT: 17.504 min Scan# 2587
 Delta R.T. -0.000 min
 Lab File: BF127322.D
 Acq: 15 Mar 2022 13:08

Tgt Ion:276 Resp: 594593
 Ion Ratio Lower Upper
 276 100
 277 23.4 18.5 27.7
 138 18.2 25.9 38.9#

