

Data Path : Z:\svoasrv\HPCHEM1\BNA_F\Data\BF031522\
 Data File : BF127321.D
 Acq On : 15 Mar 2022 12:40
 Operator : CG\JU
 Sample : PB143267BL
 Misc :
 ALS Vial : 3 Sample Multiplier: 1

Instrument :
 BNA_F
 ClientSampleId :
 PB143267BL

Integration Parameters: rteint.p
 Integrator: RTE
 Smoothing : ON Filtering: 5
 Sampling : 1 Min Area: 3 % of largest Peak
 Start Thrs: 0.2 Max Peaks: 100
 Stop Thrs : 0 Peak Location: TOP

If leading or trailing edge < 100 prefer < Baseline drop else tangent >
 Peak separation: 5

Method : Z:\svoasrv\HPCHEM1\BNA_F\Methods\8270-BF031022.M
 Title : ASP BNA STANDARDS FOR 5 POINT CALIBRATION

Signal : TIC: BF127321.D\data.ms

peak #	R.T. min	first scan	max scan	last scan	PK TY	peak height	corr. area	corr. % max.	% of total
1	5.510	543	548	551	rBV	3847880	4430093	80.80%	13.635%
2	6.504	711	717	720	rBV	3348143	4600146	83.90%	14.158%
3	6.863	775	778	782	rBV	936515	803236	14.65%	2.472%
4	7.440	869	876	878	rBV	2466790	3239063	59.08%	9.969%
5	8.151	991	997	1000	rBV	1035557	1054063	19.22%	3.244%
6	9.228	1173	1180	1183	rBV	4628325	5191020	94.68%	15.977%
7	9.904	1289	1295	1299	rBV	1290686	1206991	22.01%	3.715%
8	10.704	1424	1431	1434	rBV	3110500	3177102	57.95%	9.778%
9	11.398	1545	1549	1553	rBV	1500948	1227987	22.40%	3.779%
10	12.992	1814	1820	1823	rBV	5011112	5482862	100.00%	16.875%
11	14.045	1995	1999	2010	rBV	1169426	1041796	19.00%	3.206%
12	15.527	2246	2251	2263	rBV	617997	824153	15.03%	2.537%
13	17.251	2527	2544	2555	rBV3	44384	212550	3.88%	0.654%

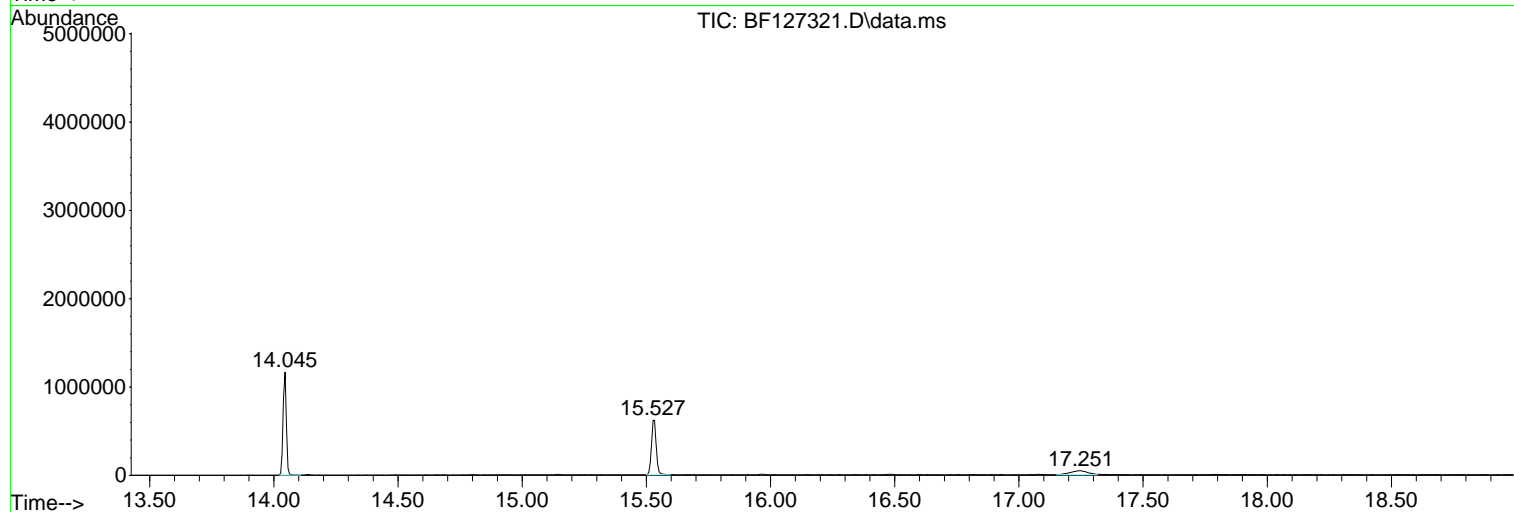
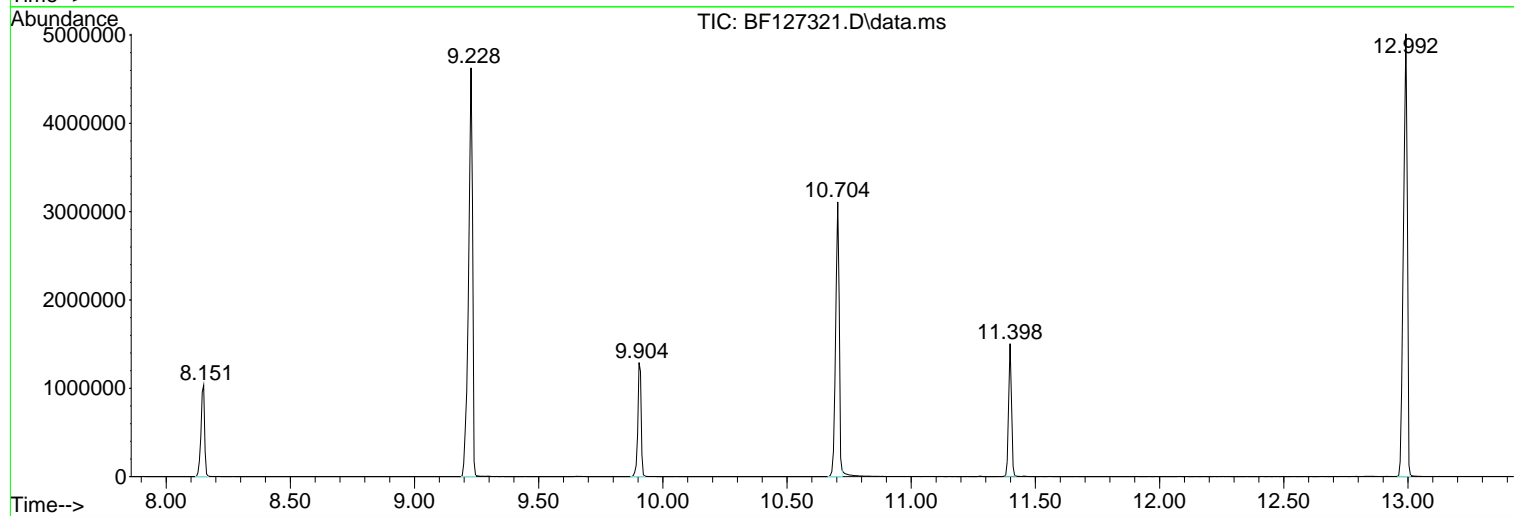
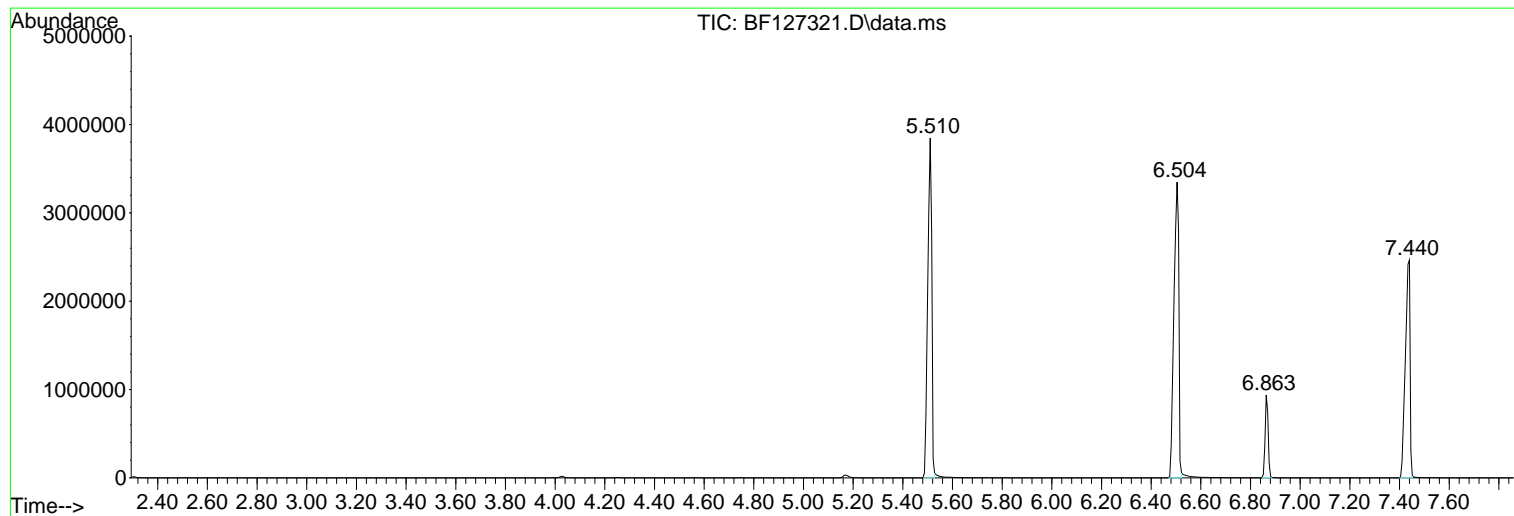
Sum of corrected areas: 32491062

Data Path : Z:\svoasrv\HPCHEM1\BNA_F\Data\BF031522\
Data File : BF127321.D
Acq On : 15 Mar 2022 12:40
Operator : CG\JU
Sample : PB143267BL
Misc :
ALS Vial : 3 Sample Multiplier: 1

Instrument :
BNA_F
ClientSampleId :
PB143267BL

Quant Method : Z:\svoasrv\HPCHEM1\BNA_F\Methods\8270-BF031022.M
Quant Title : ASP BNA STANDARDS FOR 5 POINT CALIBRATION

TIC Library : C:\Database\NIST20.L
TIC Integration Parameters: LSCINT.P



Data Path : Z:\svoasrv\HPCHEM1\BNA_F\Data\BF031522\
 Data File : BF127321.D
 Acq On : 15 Mar 2022 12:40
 Operator : CG\JU
 Sample : PB143267BL
 Misc :
 ALS Vial : 3 Sample Multiplier: 1

Instrument :
 BNA_F
 ClientSampleId :
 PB143267BL

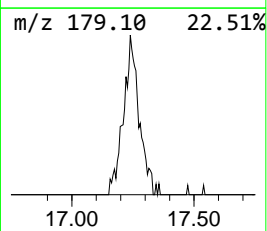
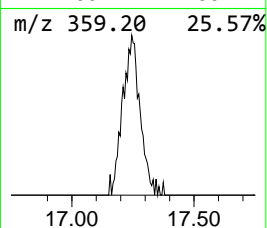
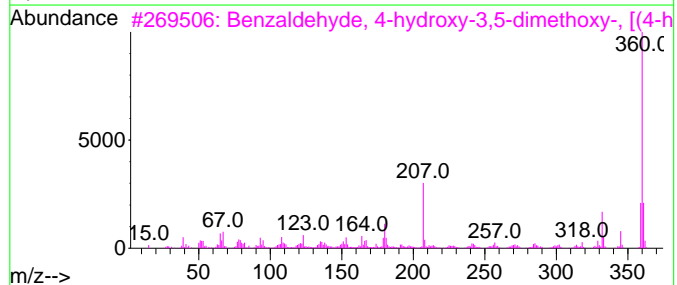
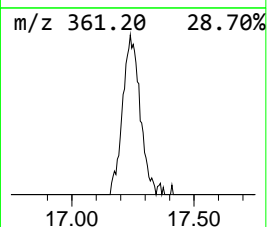
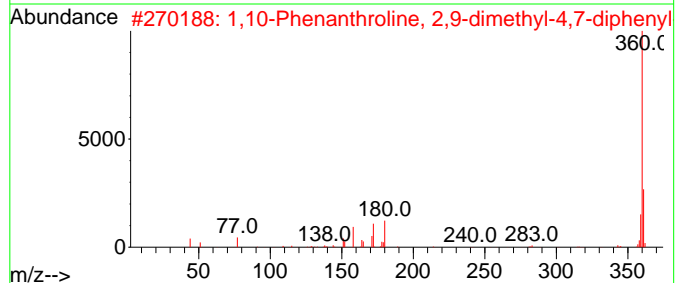
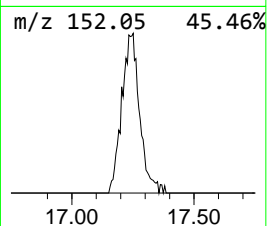
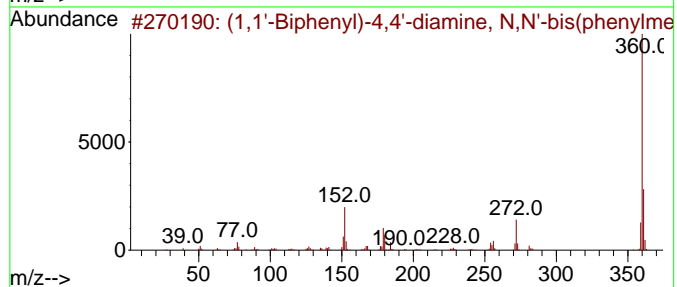
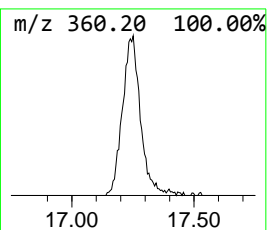
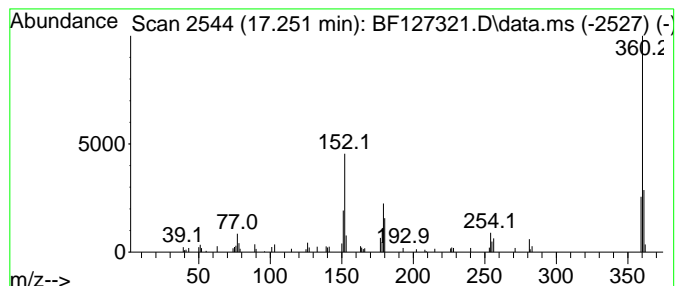
Quant Method : Z:\svoasrv\HPCHEM1\BNA_F\Methods\8270-BF031022.M
 Quant Title : ASP BNA STANDARDS FOR 5 POINT CALIBRATION

TIC Library : C:\Database\NIST20.L
 TIC Integration Parameters: LSCINT.P

 Peak Number 1 (1,1'-Biphenyl)-4,4'-diamin... Concentration Rank 1

R.T.	EstConc	Area	Relative to ISTD	R.T.
17.251	5.16 ng	212550	Perylene-d12	15.533

Hit#	of 5	Tentative ID	MW	MolForm	CAS#	Qual
1		(1,1'-Biphenyl)-4,4'-diamine, N,...	360	C26H20N2	006311-48-4	87
2		1,10-Phenanthroline, 2,9-dimethy...	360	C26H20N2	004733-39-5	47
3		Benzaldehyde, 4-hydroxy-3,5-dime...	360	C18H20N2O6	014414-32-5	47
4		N,N'-di-2-Naphthyl-p-phenylenedi...	360	C26H20N2	000093-46-9	38
5		1,3,2-Dioxaborolane, bis(spiro[4...	360	C20H13B06	1000150-23-7	37



Data Path : Z:\svoasrv\HPCHEM1\BNA_F\Data\BF031522\
Data File : BF127321.D
Acq On : 15 Mar 2022 12:40
Operator : CG\JU
Sample : PB143267BL
Misc :
ALS Vial : 3 Sample Multiplier: 1

Instrument :
BNA_F
ClientSampleId :
PB143267BL

Quant Method : Z:\svoasrv\HPCHEM1\BNA_F\Methods\8270-BF031022.M
Quant Title : ASP BNA STANDARDS FOR 5 POINT CALIBRATION

TIC Library : C:\Database\NIST0.L
TIC Integration Parameters: LSCINT.P

TIC Top Hit name	RT	EstConc	Units	Response	--Internal Standard--			
					#	RT	Resp	Conc
(1,1'-Biphenyl)...	17.251	5.2	ng	212550	6	15.533	824153	20.0