

Data Path : Z:\HPCHEM1\BNA_F\DATA\BF031616\
 Data File : BF085476.D
 Acq On : 16 Mar 2016 22:01
 Operator : UM/SJ
 Sample : H1788-03
 Misc :
 ALS Vial : 10 Sample Multiplier: 1

Instrument :
 BNA_F
 ClientSampleId :
 SB-3(7-8)

Quant Time: Mar 17 00:52:34 2016
 Quant Method : Z:\HPCHEM1\BNA_F\METHODS\8270-BF031516.M
 Quant Title : ASP BNA STANDARDS FOR 5 POINT CALIBRATION
 QLast Update : Tue Mar 15 18:57:05 2016
 Response via : Initial Calibration

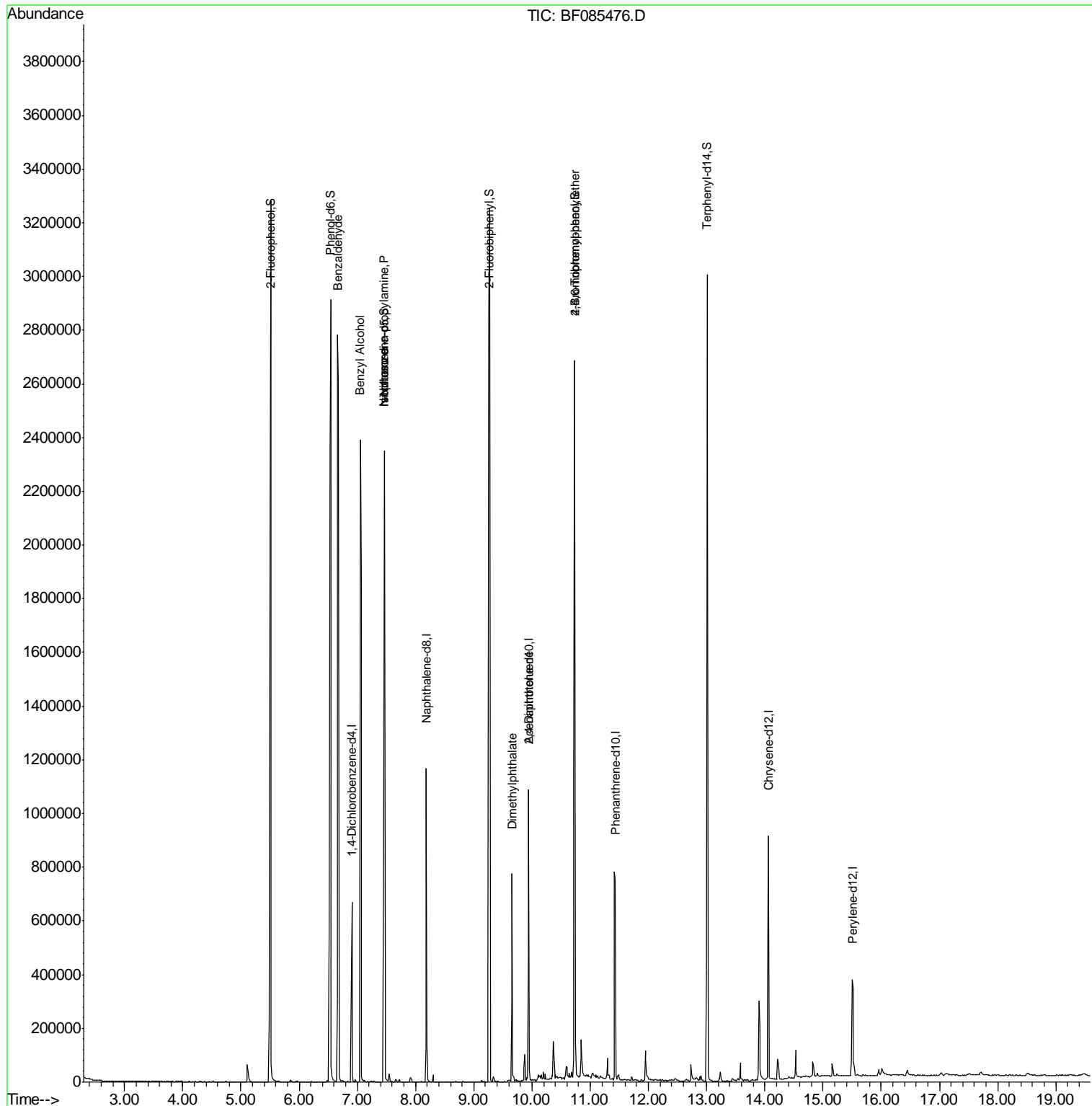
Internal Standards	R.T.	QIon	Response	Conc	Units	Dev(Min)
1) 1,4-Dichlorobenzene-d4	6.90	152	121606	20.00	ng	-0.01
21) Naphthalene-d8	8.18	136	495785	20.00	ng	-0.02
38) Acenaphthene-d10	9.94	164	233398	20.00	ng	-0.01
63) Phenanthrene-d10	11.43	188	427815	20.00	ng	-0.01
75) Chrysene-d12	14.06	240	291193	20.00	ng	-0.02
86) Perylene-d12	15.51	264	198217	20.00	ng	-0.02
System Monitoring Compounds						
5) 2-Fluorophenol	5.51	112	1194363	168.83	ng	0.00
7) Phenol-d6	6.54	99	1586073	172.84	ng	-0.01
23) Nitrobenzene-d5	7.46	82	845992	100.89	ng	-0.02
41) 2,4,6-Tribromophenol	10.73	330	344496	160.25	ng	-0.02
44) 2-Fluorobiphenyl	9.27	172	1526857	113.49	ng	-0.01
78) Terphenyl-d14	13.01	244	1365018	106.04	ng	-0.02
Target Compounds						
9) Benzaldehyde	6.66	77	25927	5.06	ng	82
15) Benzyl Alcohol	7.05	79	14544	2.22	ng	# 49
19) n-Nitroso-di-n-propylamine	7.46	70	113002	20.56	ng	# 77
25) Isophorone	7.46	82	648144	37.90	ng	# 67
49) Dimethylphthalate	9.66	163	347152	20.39	ng	99
56) 2,4-Dinitrotoluene	9.94	165	29949	6.35	ng	# 22
66) 4-Bromophenyl-phenylether	10.73	248	24595	5.68	ng	# 1

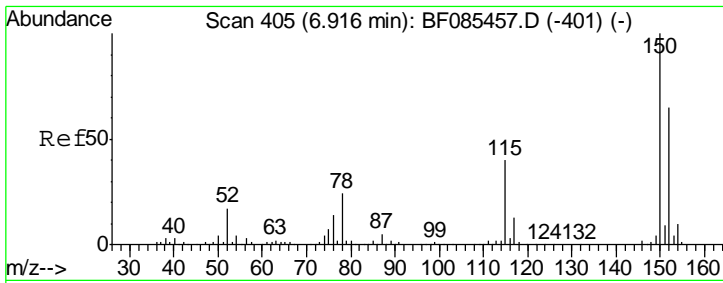
(#) = qualifier out of range (m) = manual integration (+) = signals summed

Data Path : Z:\HPCHEM1\BNA_F\DATA\BF031616\
 Data File : BF085476.D
 Acq On : 16 Mar 2016 22:01
 Operator : UM/SJ
 Sample : H1788-03
 Misc :
 ALS Vial : 10 Sample Multiplier: 1

Instrument :
 BNA_F
 Client Sampled :
 SB-3(7-8)

Quant Time: Mar 17 00:52:34 2016
 Quant Method : Z:\HPCHEM1\BNA_F\METHODS\8270-BF031516.M
 Quant Title : ASP BNA STANDARDS FOR 5 POINT CALIBRATION
 QLast Update : Tue Mar 15 18:57:05 2016
 Response via : Initial Calibration



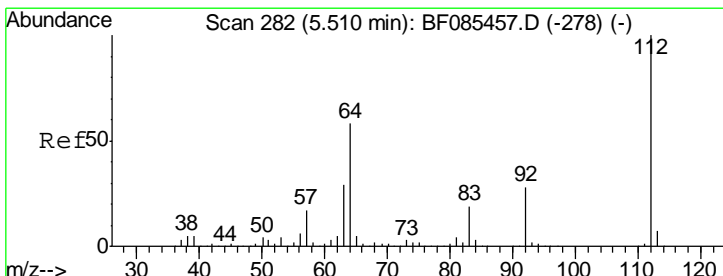
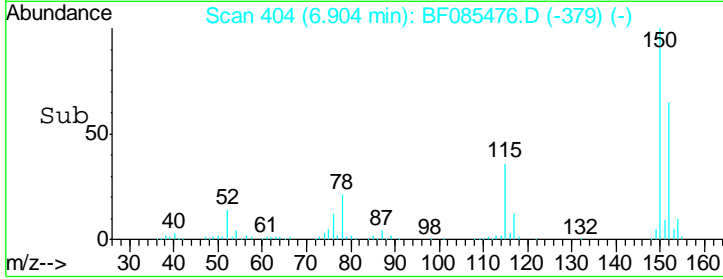
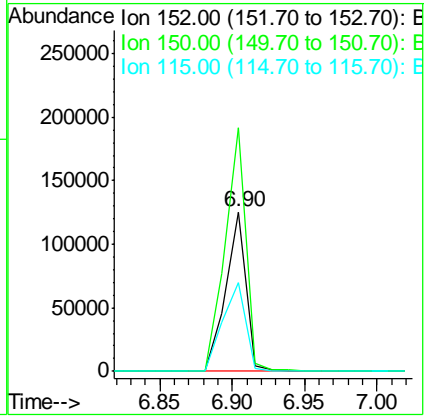
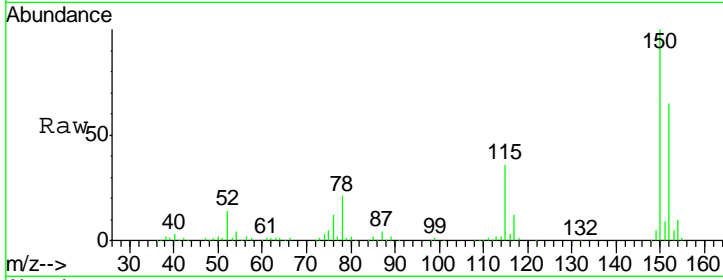


#1
 1,4-Dichlorobenzene-d4
 Concen: 20.00 ng
 RT: 6.90 min Scan# 404
 Delta R.T. -0.01 min
 Lab File: BF085476.D
 Acq: 16 Mar 2016 22:01

Instrument :
 BNA_F
ClientSampled :
 SB-3(7-8)

Tgt Ion:152 Resp: 121606

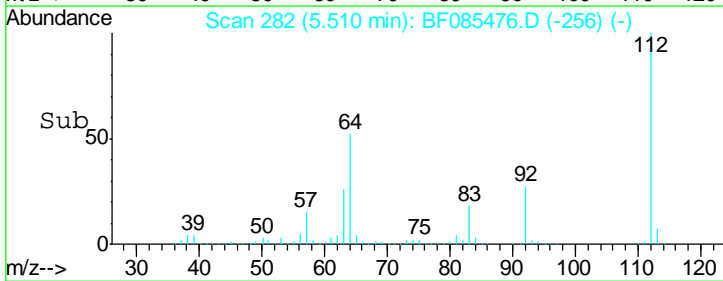
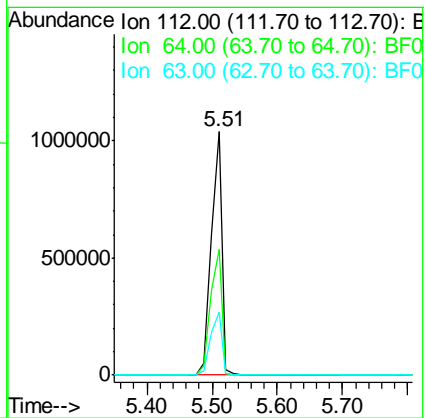
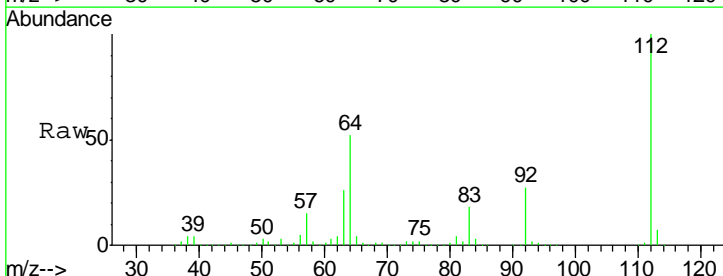
Ion	Ratio	Lower	Upper
152	100		
150	152.7	124.6	186.8
115	55.6	46.6	70.0

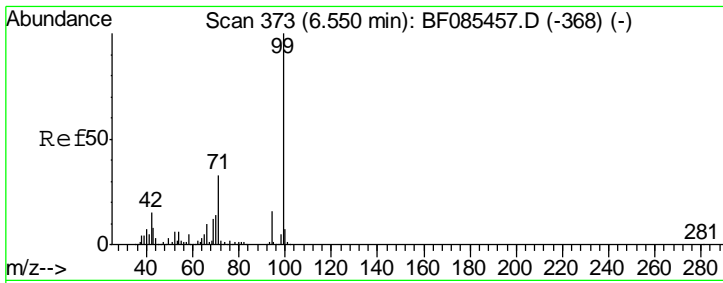


#5
 2-Fluorophenol
 Concen: 168.83 ng
 RT: 5.51 min Scan# 282
 Delta R.T. -0.00 min
 Lab File: BF085476.D
 Acq: 16 Mar 2016 22:01

Tgt Ion:112 Resp: 1194363

Ion	Ratio	Lower	Upper
112	100		
64	51.8	49.0	73.4
63	26.0	24.8	37.2

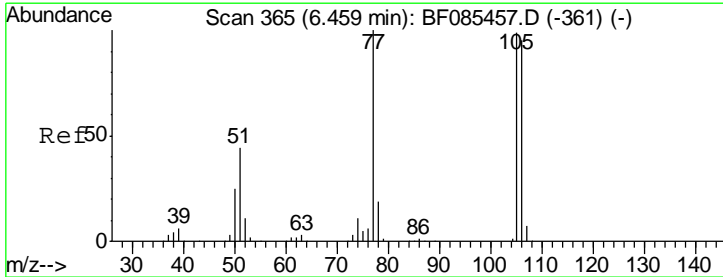
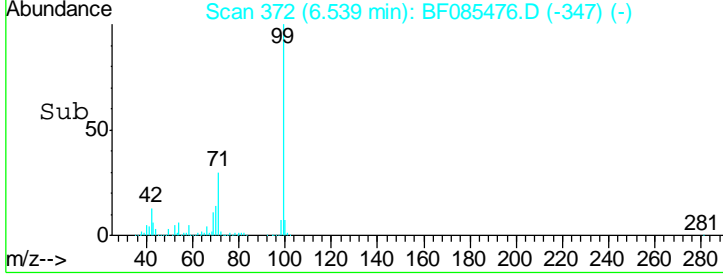
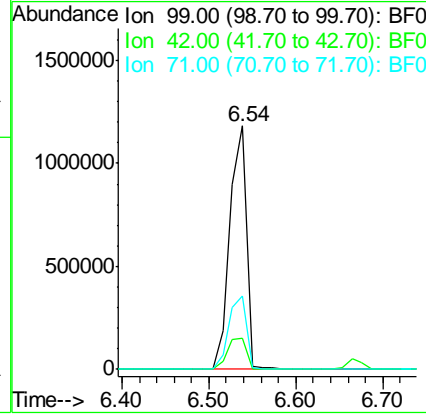
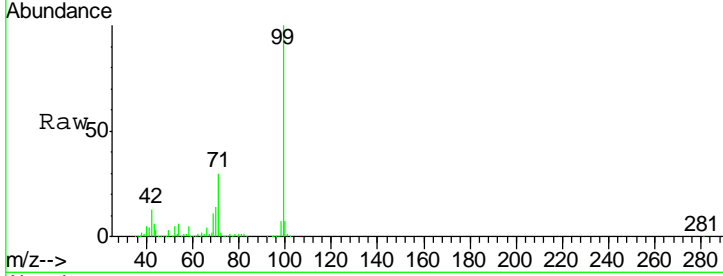




#7
 Phenol-d6
 Concen: 172.84 ng
 RT: 6.54 min Scan# 372
 Delta R.T. -0.01 min
 Lab File: BF085476.D
 Acq: 16 Mar 2016 22:01

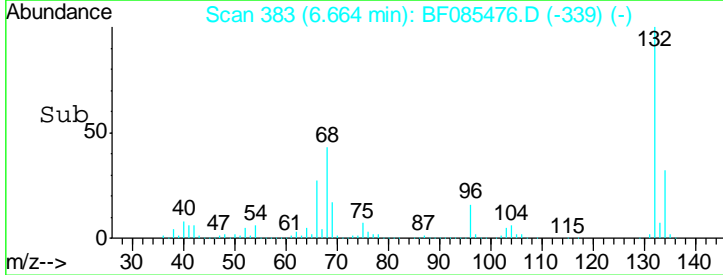
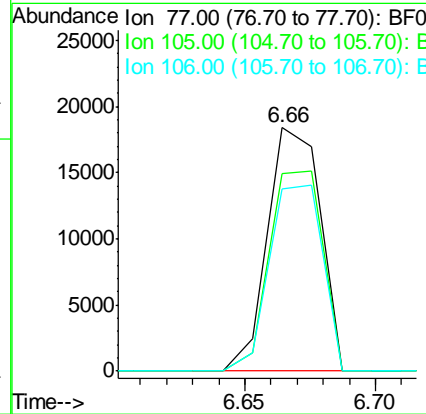
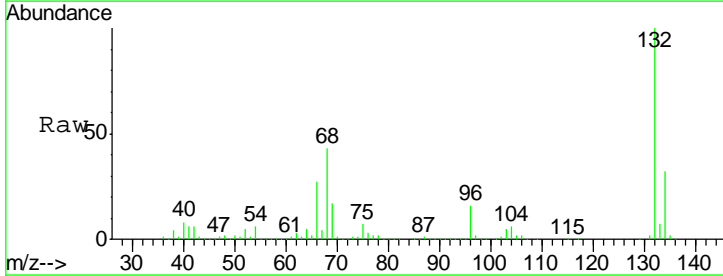
Instrument :
 BNA_F
 ClientSampled :
 SB-3(7-8)

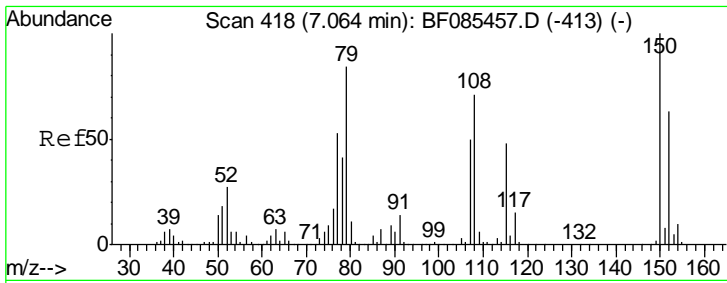
Tgt Ion	Resp	Lower	Upper
99	1586073		
42	12.7	13.6	20.4#
71	30.2	26.7	40.1



#9
 Benzaldehyde
 Concen: 5.06 ng
 RT: 6.66 min Scan# 383
 Delta R.T. 0.21 min
 Lab File: BF085476.D
 Acq: 16 Mar 2016 22:01

Tgt Ion	Resp	Lower	Upper
77	25927		
105	80.9	78.2	118.2
106	75.0	72.9	112.9

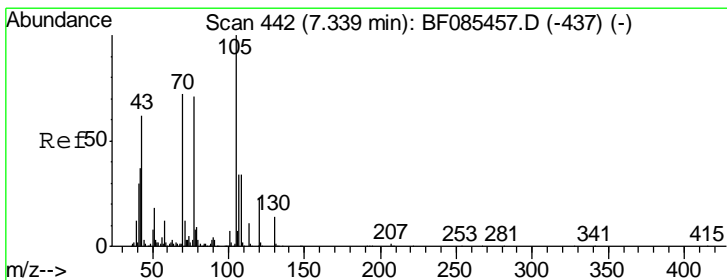
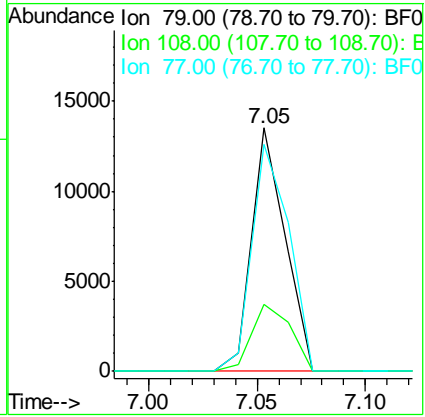
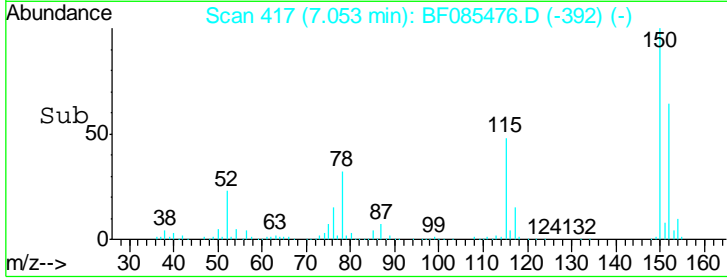
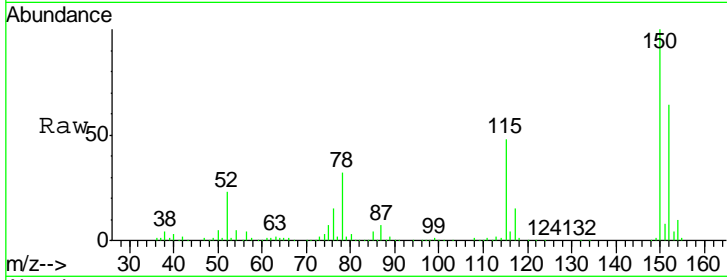




#15
 Benzyl Alcohol
 Concen: 2.22 ng
 RT: 7.05 min Scan# 417
 Delta R.T. -0.01 min
 Lab File: BF085476.D
 Acq: 16 Mar 2016 22:01

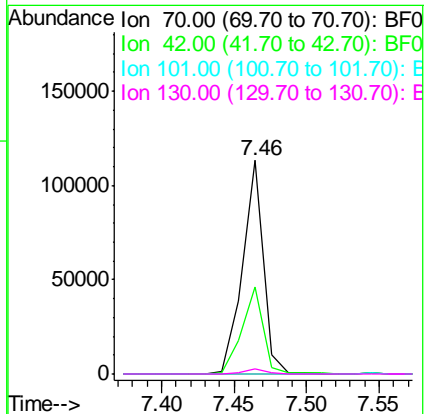
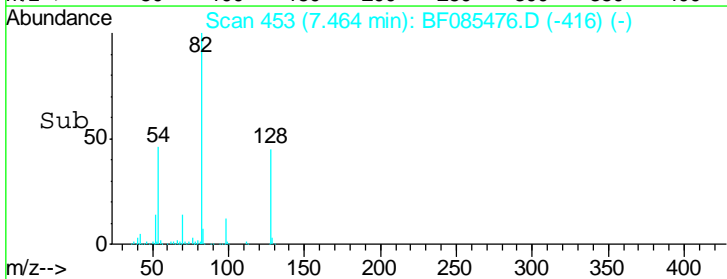
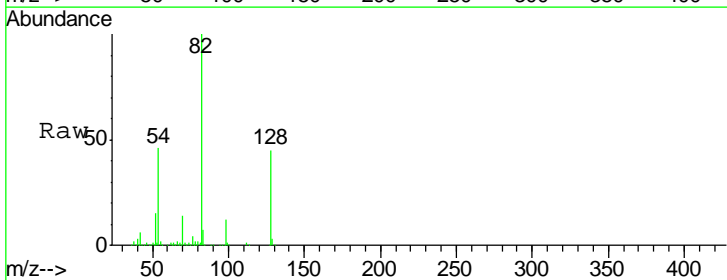
Instrument :
 BNA_F
ClientSampled :
 SB-3(7-8)

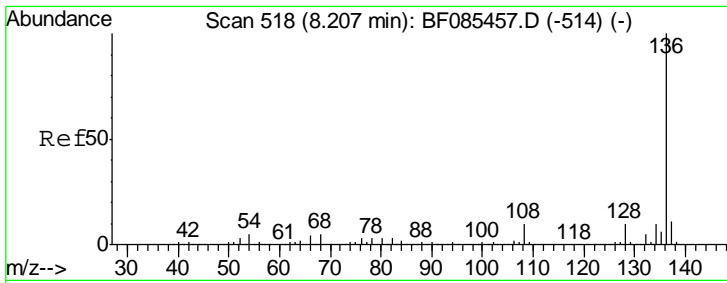
Tgt Ion	Resp	Lower	Upper
79	14544		
108	27.3	62.9	94.3#
77	93.4	49.5	74.3#



#19
 n-Nitroso-di-n-propylamine
 Concen: 20.56 ng
 RT: 7.46 min Scan# 453
 Delta R.T. 0.13 min
 Lab File: BF085476.D
 Acq: 16 Mar 2016 22:01

Tgt Ion	Resp	Lower	Upper
70	113002		
42	41.0	37.7	56.5
101	0.0	8.2	12.4#
130	2.2	20.5	30.7#

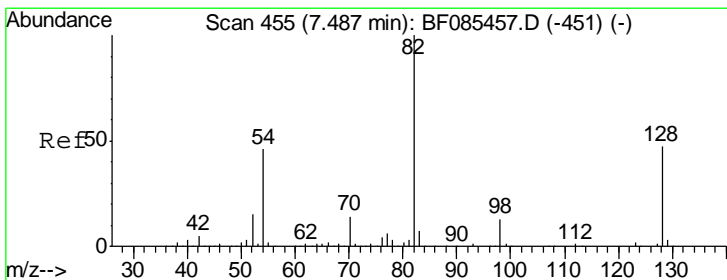
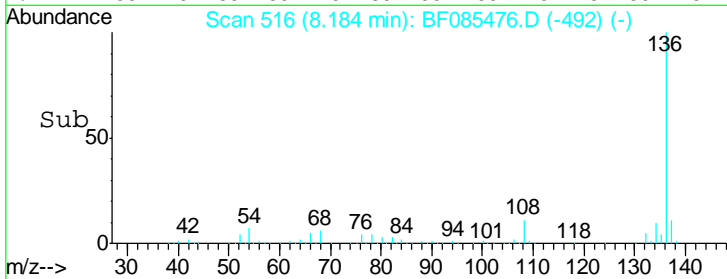
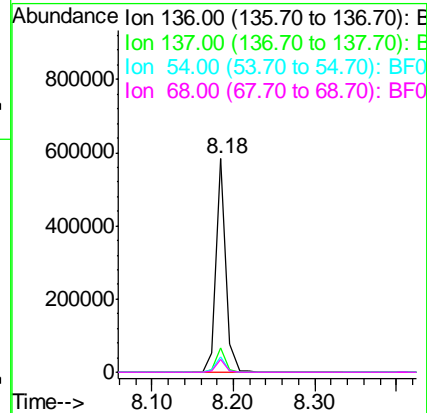
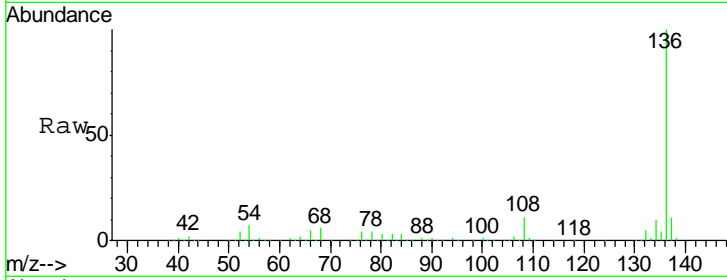




#21
 Naphthalene-d8
 Concen: 20.00 ng
 RT: 8.18 min Scan# 516
 Delta R.T. -0.02 min
 Lab File: BF085476.D
 Acq: 16 Mar 2016 22:01

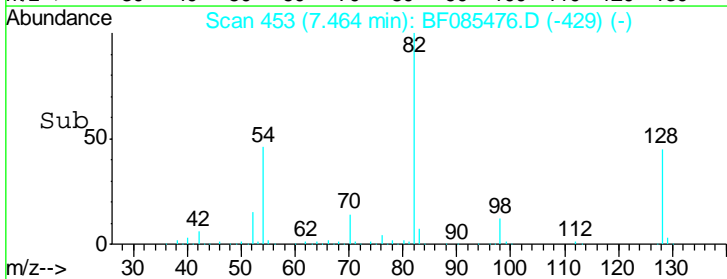
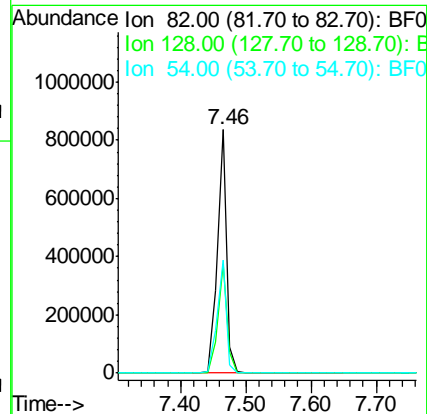
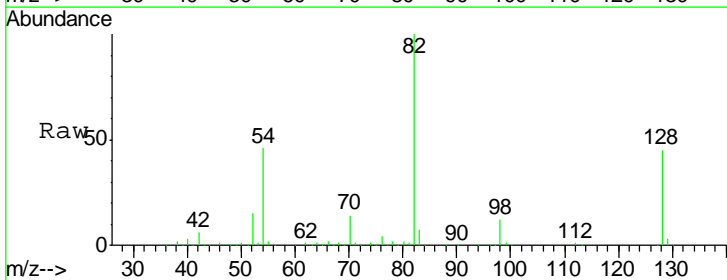
Instrument :
 BNA_F
 ClientSampleID :
 SB-3(7-8)

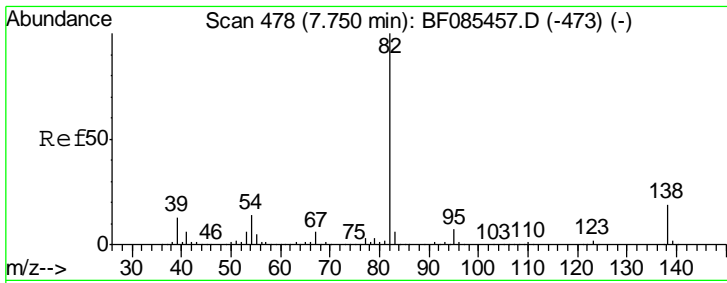
Tgt Ion	Resp	Lower	Upper
136	100		
137	11.2	9.3	13.9
54	7.3	7.4	11.2#
68	5.9	6.0	9.0#



#23
 Nitrobenzene-d5
 Concen: 100.89 ng
 RT: 7.46 min Scan# 453
 Delta R.T. -0.02 min
 Lab File: BF085476.D
 Acq: 16 Mar 2016 22:01

Tgt Ion	Resp	Lower	Upper
82	100		
128	45.0	34.5	51.7
54	46.4	39.3	58.9

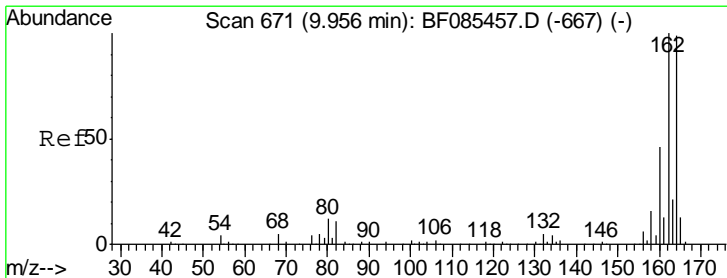
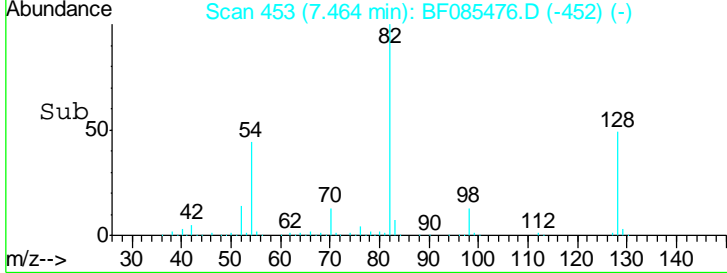
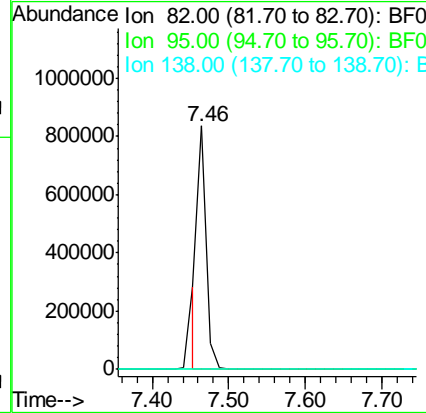
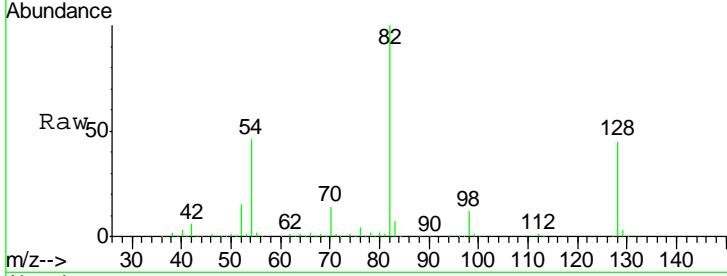




#25
 Isophorone
 Concen: 37.90 ng
 RT: 7.46 min Scan# 453
 Delta R.T. -0.29 min
 Lab File: BF085476.D
 Acq: 16 Mar 2016 22:01

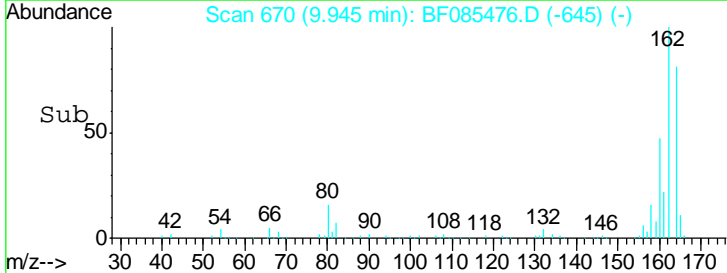
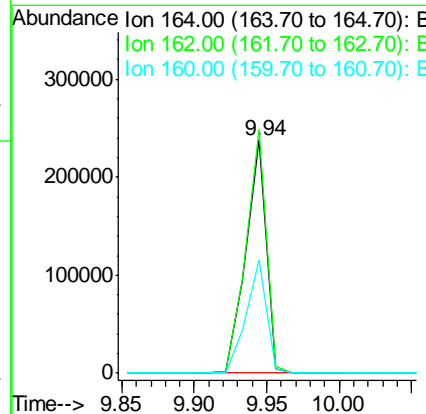
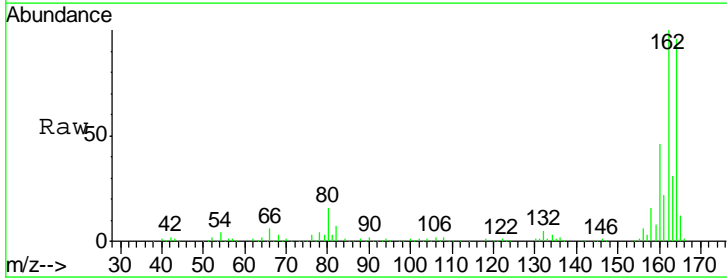
Instrument :
 BNA_F
 ClientSampled :
 SB-3(7-8)

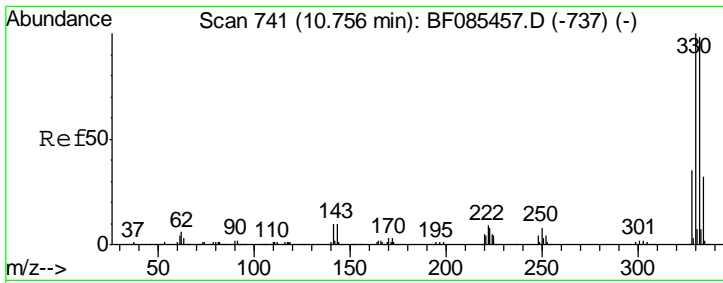
Tgt Ion	Resp	Lower	Upper
82	100		
95	0.0	5.4	8.2#
138	0.0	13.3	19.9#



#38
 Acenaphthene-d10
 Concen: 20.00 ng
 RT: 9.94 min Scan# 670
 Delta R.T. -0.01 min
 Lab File: BF085476.D
 Acq: 16 Mar 2016 22:01

Tgt Ion	Resp	Lower	Upper
164	100		
162	104.4	83.3	124.9
160	48.4	37.9	56.9

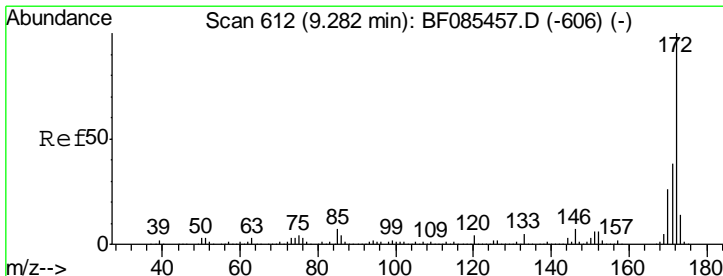
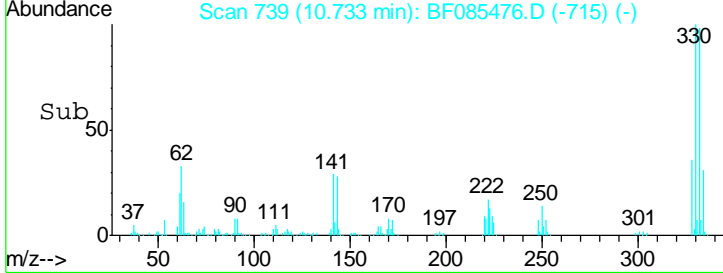
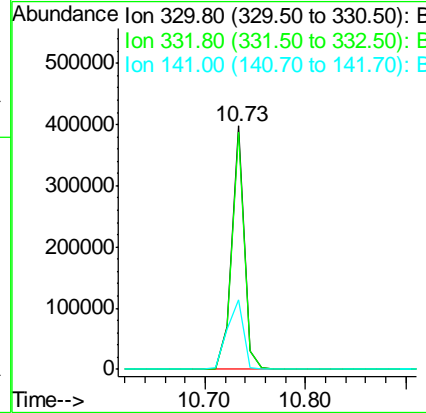
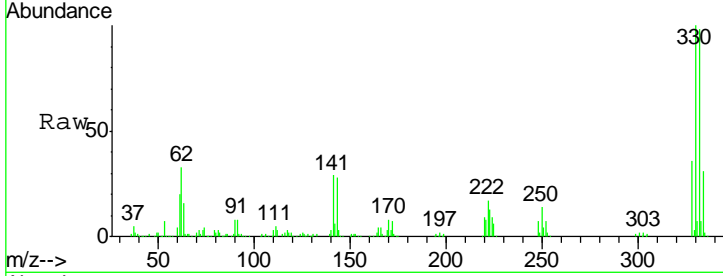




#41
 2,4,6-Tribromophenol
 Concen: 160.25 ng
 RT: 10.73 min Scan# 739
 Delta R.T. -0.02 min
 Lab File: BF085476.D
 Acq: 16 Mar 2016 22:01

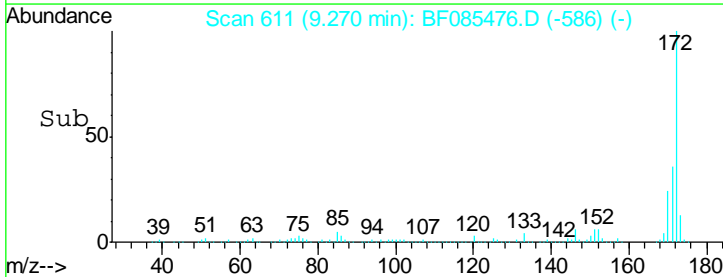
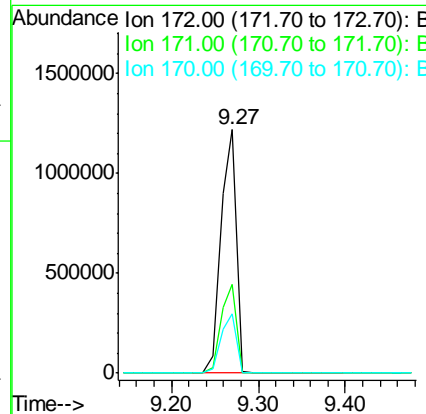
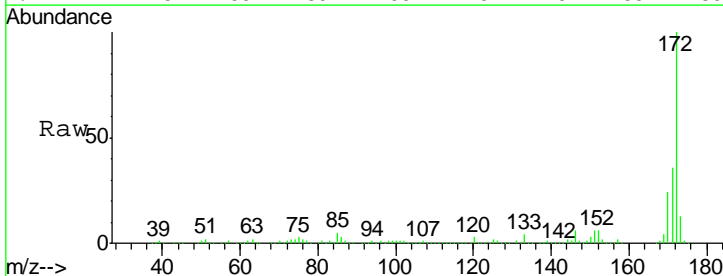
Instrument :
 BNA_F
 ClientSampleID :
 SB-3(7-8)

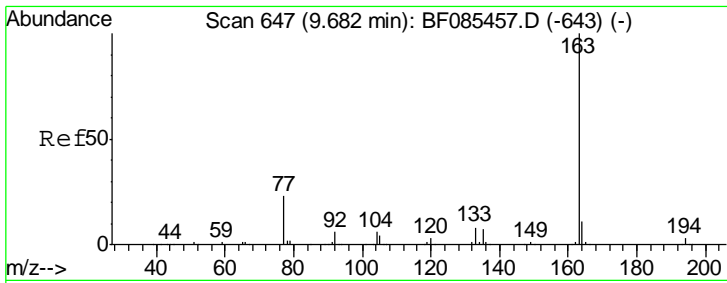
Tgt Ion	Resp	Lower	Upper
330	100		
332	97.9	77.1	115.7
141	37.5	35.0	52.6



#44
 2-Fluorobiphenyl
 Concen: 113.49 ng
 RT: 9.27 min Scan# 611
 Delta R.T. -0.01 min
 Lab File: BF085476.D
 Acq: 16 Mar 2016 22:01

Tgt Ion	Resp	Lower	Upper
172	100		
171	36.3	29.3	43.9
170	24.3	20.0	30.0

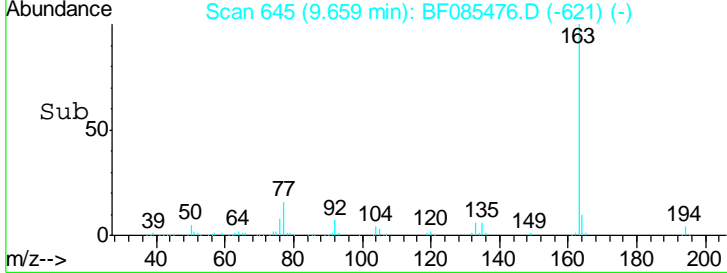
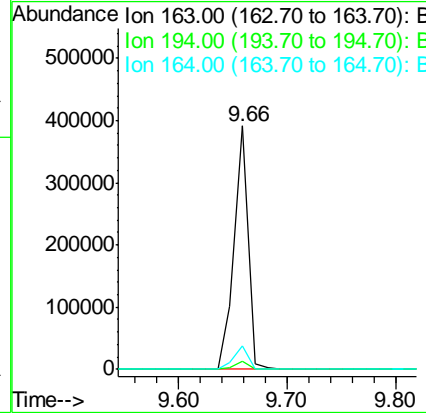
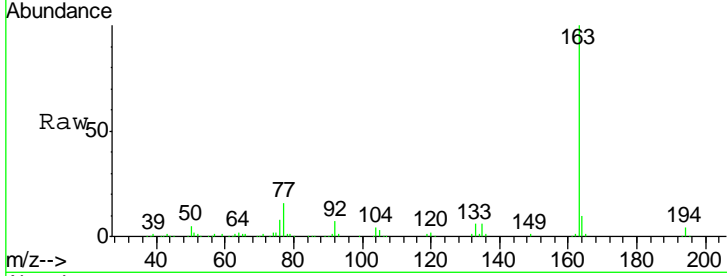




#49
 Dimethylphthalate
 Concen: 20.39 ng
 RT: 9.66 min Scan# 645
 Delta R.T. -0.02 min
 Lab File: BF085476.D
 Acq: 16 Mar 2016 22:01

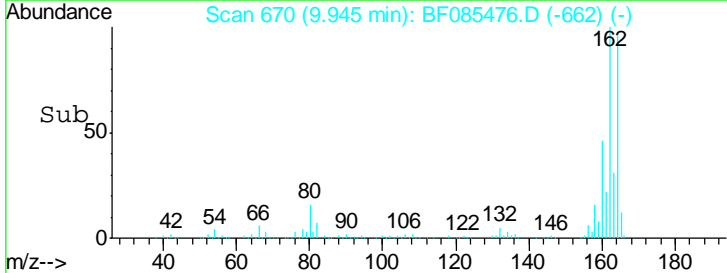
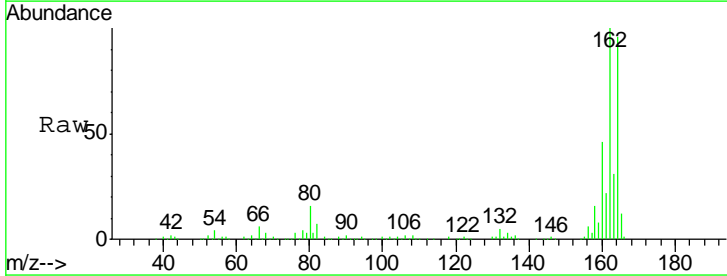
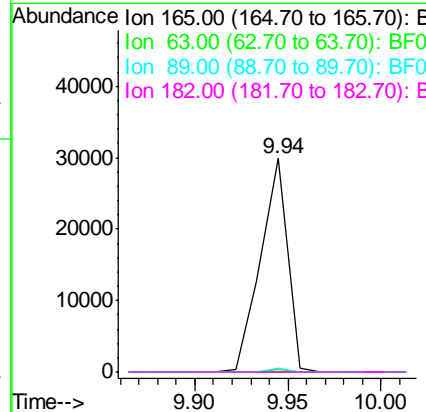
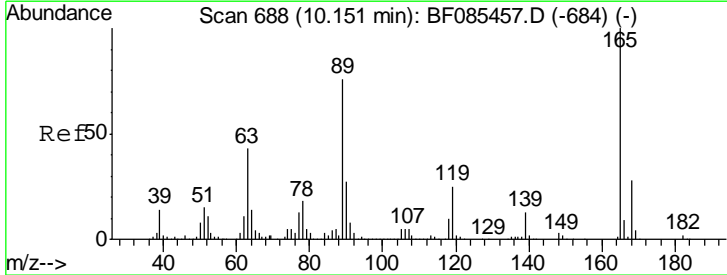
Instrument :
 BNA_F
 ClientSampled :
 SB-3(7-8)

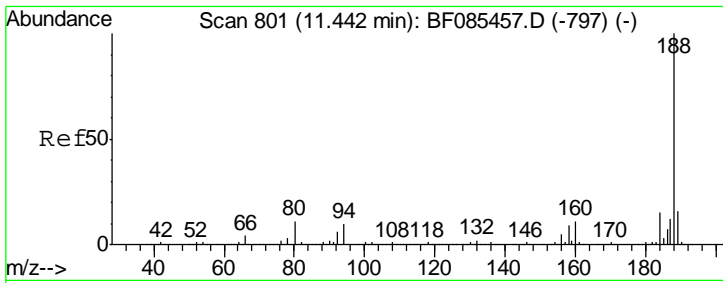
Tgt Ion	Resp	Lower	Upper
163	100		
194	3.6	3.1	4.7
164	9.7	8.2	12.4



#56
 2,4-Dinitrotoluene
 Concen: 6.35 ng
 RT: 9.94 min Scan# 670
 Delta R.T. -0.21 min
 Lab File: BF085476.D
 Acq: 16 Mar 2016 22:01

Tgt Ion	Resp	Lower	Upper
165	100		
63	1.3	35.4	53.0#
89	1.5	61.9	92.9#
182	0.0	1.9	2.9#

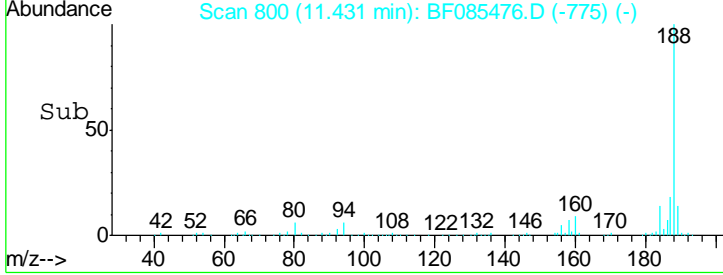
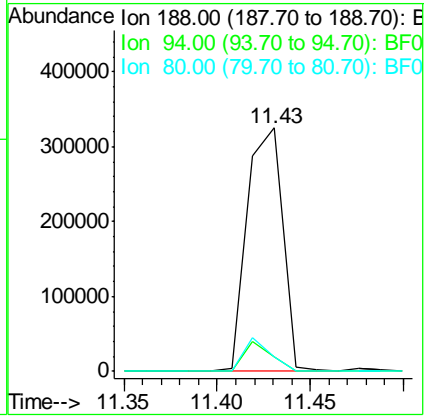
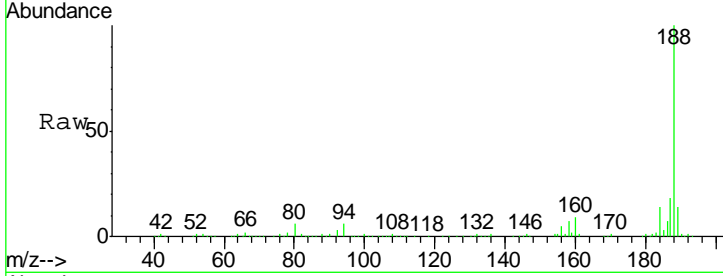




#63
 Phenanthrene-d10
 Concen: 20.00 ng
 RT: 11.43 min Scan# 800
 Delta R.T. -0.01 min
 Lab File: BF085476.D
 Acq: 16 Mar 2016 22:01

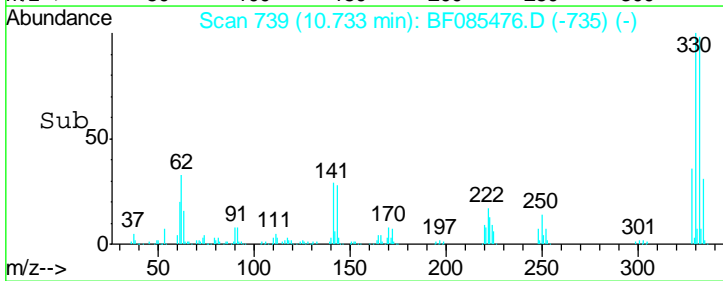
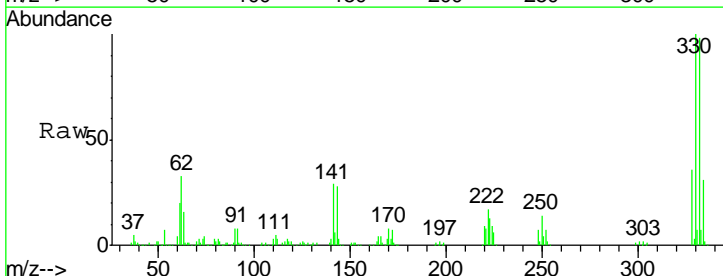
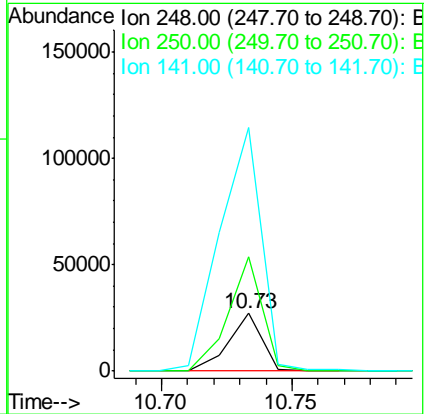
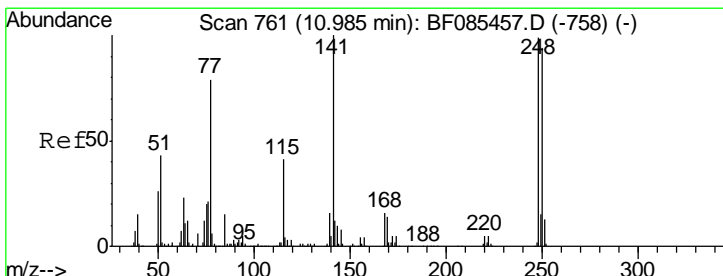
Instrument :
 BNA_F
ClientSampled :
 SB-3(7-8)

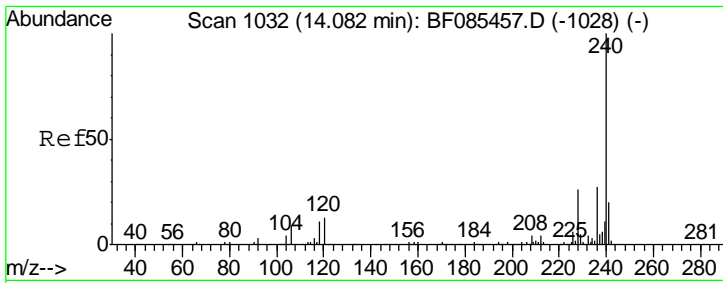
Tgt Ion	Resp	Lower	Upper
188	100		
94	6.0	7.0	10.6#
80	5.8	7.4	11.0#



#66
 4-Bromophenyl-phenylether
 Concen: 5.68 ng
 RT: 10.73 min Scan# 739
 Delta R.T. -0.25 min
 Lab File: BF085476.D
 Acq: 16 Mar 2016 22:01

Tgt Ion	Resp	Lower	Upper
248	100		
250	198.0	77.1	115.7#
141	419.9	66.2	99.2#

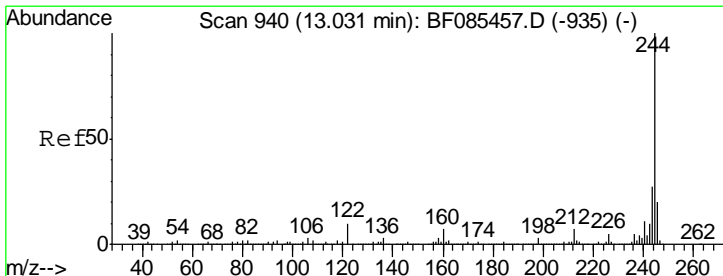
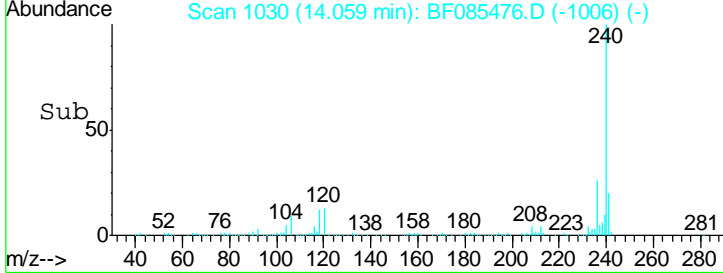
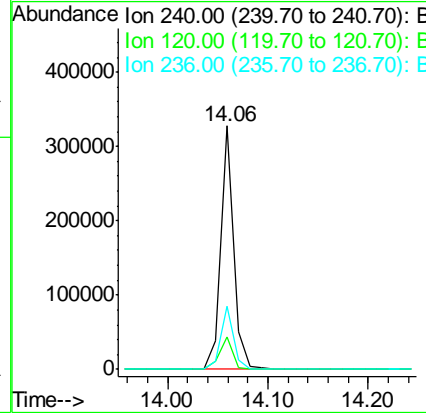
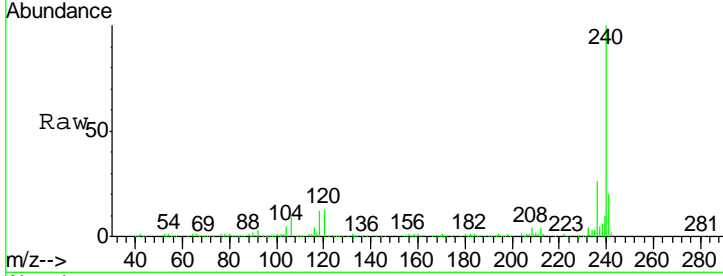




#75
 Chrysene-d12
 Concen: 20.00 ng
 RT: 14.06 min Scan# 1030
 Delta R.T. -0.02 min
 Lab File: BF085476.D
 Acq: 16 Mar 2016 22:01

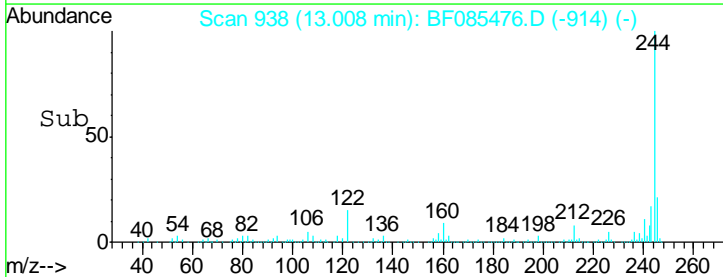
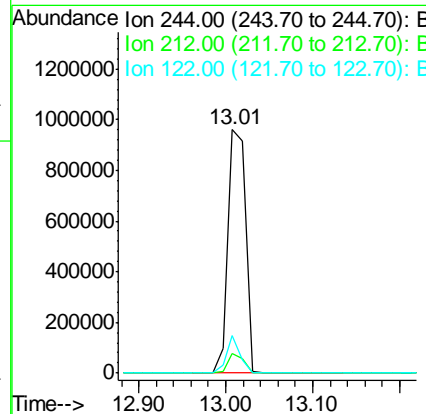
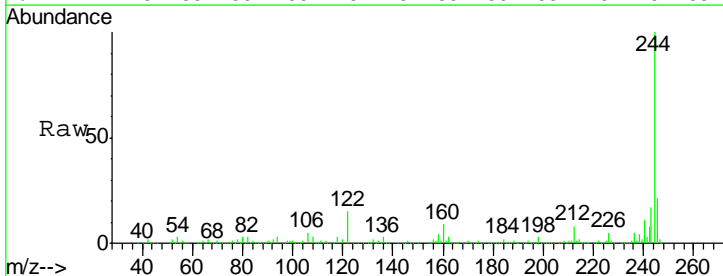
Instrument :
 BNA_F
 ClientSampled :
 SB-3(7-8)

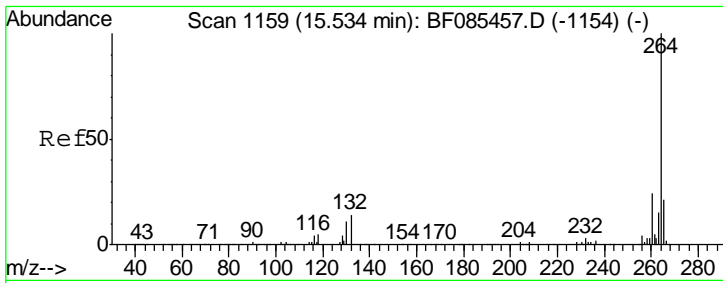
Tgt Ion	Resp	Lower	Upper
240	291193		
120	13.4	5.3	7.9#
236	26.1	20.7	31.1



#78
 Terphenyl-d14
 Concen: 106.04 ng
 RT: 13.01 min Scan# 938
 Delta R.T. -0.02 min
 Lab File: BF085476.D
 Acq: 16 Mar 2016 22:01

Tgt Ion	Resp	Lower	Upper
244	1365018		
212	7.8	6.4	9.6
122	15.5	11.4	17.2





#86
 Perylene-d12
 Concen: 20.00 ng
 RT: 15.51 min Scan# 1157
 Delta R.T. -0.02 min
 Lab File: BF085476.D
 Acq: 16 Mar 2016 22:01

Instrument :
 BNA_F
ClientSampled :
 SB-3(7-8)

Tgt Ion	Resp	Lower	Upper
264	198217		
260	24.1	19.2	28.8
265	21.5	17.3	25.9

