

Data Path : Z:\HPCHEM1\BNA F\DATA\BF031617\
 Data File : BF093716.D
 Acq On : 16 Mar 2017 19:51
 Operator : SJ/MA
 Sample : I2258-01
 Misc :
 ALS Vial : 15 Sample Multiplier: 1

Instrument :
 BNA_F
 ClientSampleId :
 GRINNELL-TOPSOIL

Quant Time: Mar 17 03:36:04 2017
 Quant Method : Z:\HPCHEM1\BNA F\METHODS\8270-BF030717.M
 Quant Title : ASP BNA STANDARDS FOR 5 POINT CALIBRATION
 QLast Update : Mon Mar 13 15:05:08 2017
 Response via : Initial Calibration

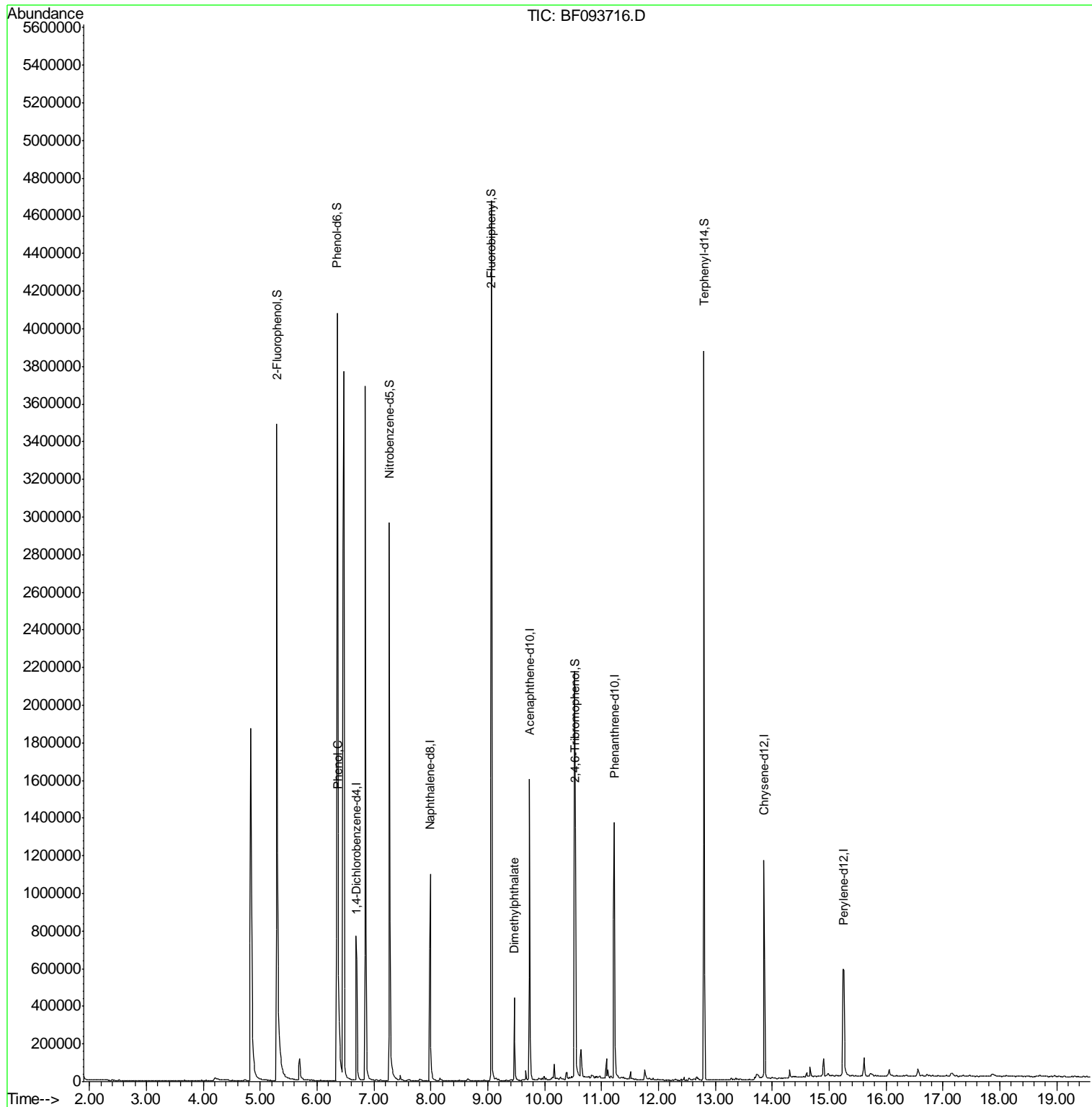
Internal Standards	R.T.	QIon	Response	Conc	Units	Dev(Min)
1) 1,4-Dichlorobenzene-d4	6.70	152	177814	20.00	ng	-0.02
21) Naphthalene-d8	7.99	136	691130	20.00	ng	-0.02
38) Acenaphthene-d10	9.74	164	340906	20.00	ng	-0.02
63) Phenanthrene-d10	11.22	188	638367	20.00	ng	-0.02
75) Chrysene-d12	13.85	240	491024	20.00	ng	-0.03
86) Perylene-d12	15.26	264	343485	20.00	ng	-0.02
System Monitoring Compounds						
5) 2-Fluorophenol	5.29	112	1389553	130.06	ng	-0.02
7) Phenol-d6	6.36	99	1680581	124.74	ng	-0.02
23) Nitrobenzene-d5	7.27	82	1077517	86.50	ng	-0.03
41) 2,4,6-Tribromophenol	10.54	330	315350	141.98	ng	-0.01
44) 2-Fluorobiphenyl	9.06	172	1599690	87.28	ng	-0.02
78) Terphenyl-d14	12.80	244	1279065	67.73	ng	-0.02
Target Compounds						
10) Phenol	6.37	94	143514	8.69	ng	86
49) Dimethylphthalate	9.46	163	204992	9.07	ng	# 99

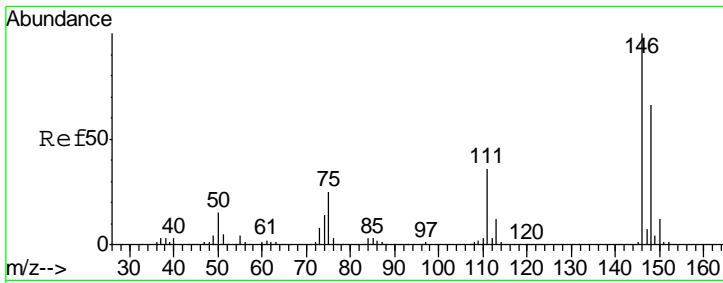
(#) = qualifier out of range (m) = manual integration (+) = signals summed

Data Path : Z:\HPCHEM1\BNA F\DATA\BF031617\
 Data File : BF093716.D
 Acq On : 16 Mar 2017 19:51
 Operator : SJ/MA
 Sample : I2258-01
 Misc :
 ALS Vial : 15 Sample Multiplier: 1

Instrument :
 BNA_F
 ClientSampleId :
 GRINNELL-TOPSOIL

Quant Time: Mar 17 03:36:04 2017
 Quant Method : Z:\HPCHEM1\BNA F\METHODS\8270-BF030717.M
 Quant Title : ASP BNA STANDARDS FOR 5 POINT CALIBRATION
 QLast Update : Mon Mar 13 15:05:08 2017
 Response via : Initial Calibration

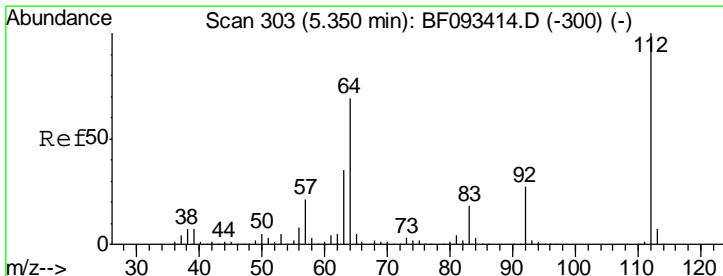
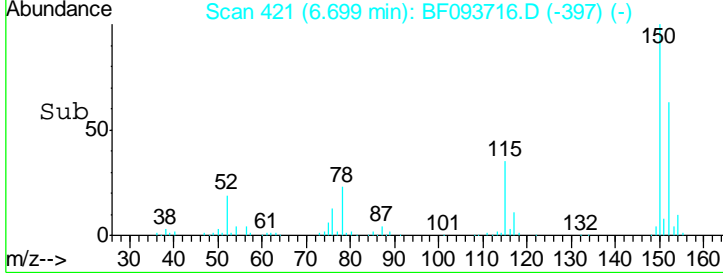
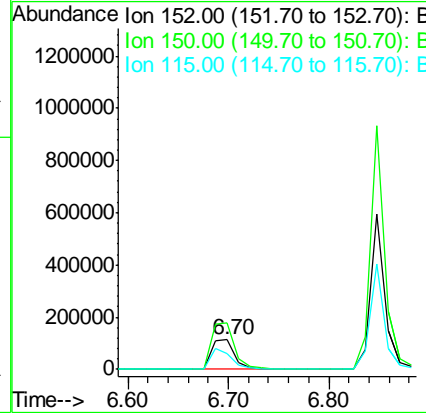
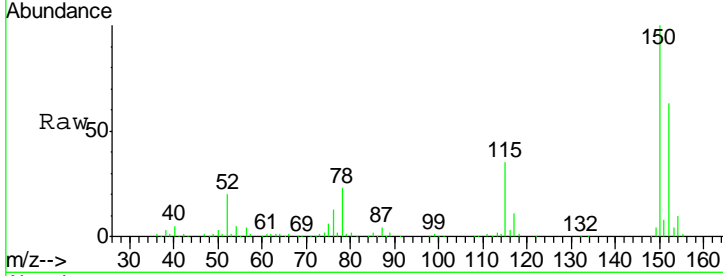




#1
 1,4-Dichlorobenzene-d4
 Concen: 20.00 ng
 RT: 6.70 min Scan# 421
 Delta R.T. -0.02 min
 Lab File: BF093716.D
 Acq: 16 Mar 2017 19:51

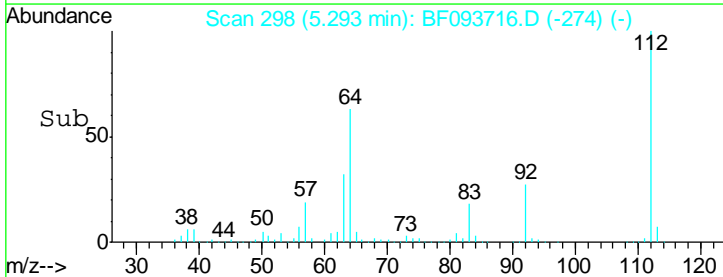
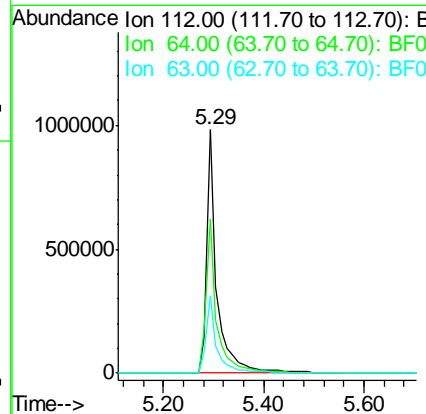
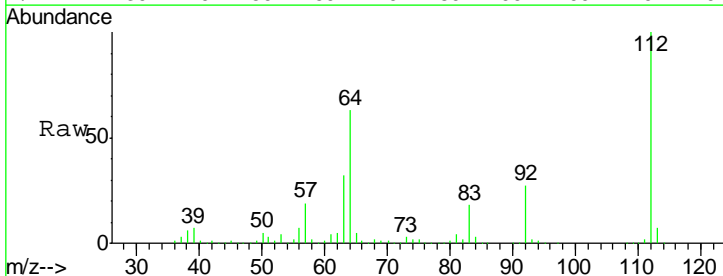
Instrument :
 BNA_F
 ClientSampleId :
 GRINNELL-TOPSOIL

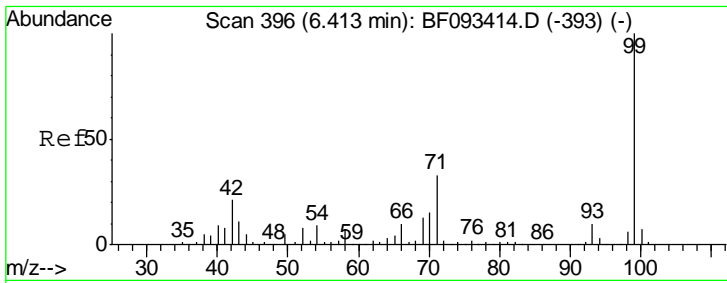
Tgt Ion	Resp	Lower	Upper
152	177814		
150	159.5	124.9	187.3
115	55.5	46.0	69.0



#5
 2-Fluorophenol
 Concen: 130.06 ng
 RT: 5.29 min Scan# 298
 Delta R.T. -0.02 min
 Lab File: BF093716.D
 Acq: 16 Mar 2017 19:51

Tgt Ion	Resp	Lower	Upper
112	1389553		
64	63.0	46.1	69.1
63	31.8	23.8	35.6



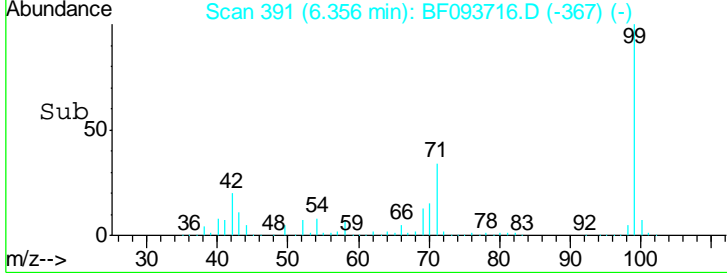
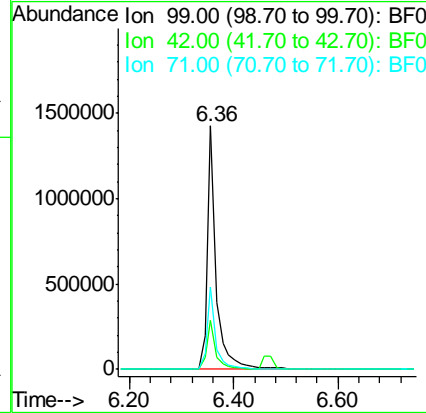
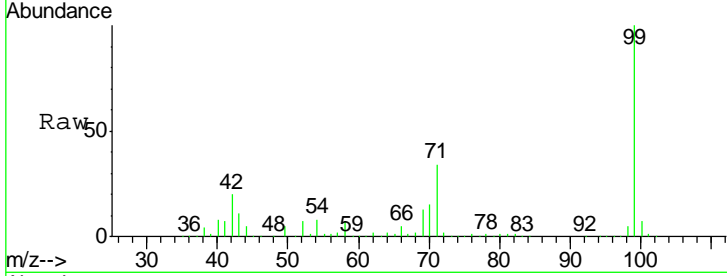


#7
 Phenol-d6
 Concen: 124.74 ng
 RT: 6.36 min Scan# 391
 Delta R.T. -0.02 min
 Lab File: BF093716.D
 Acq: 16 Mar 2017 19:51

Instrument :
 BNA_F
ClientSampled :
 GRINNELL-TOPSOIL

Tgt Ion: 99 Resp: 1680581

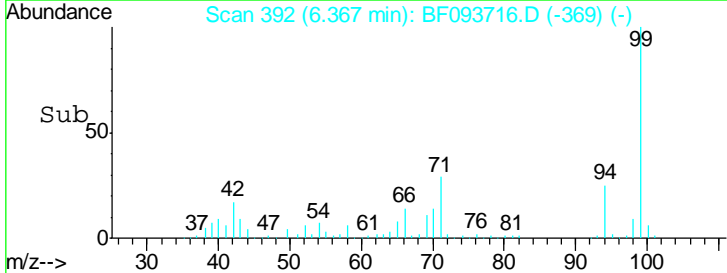
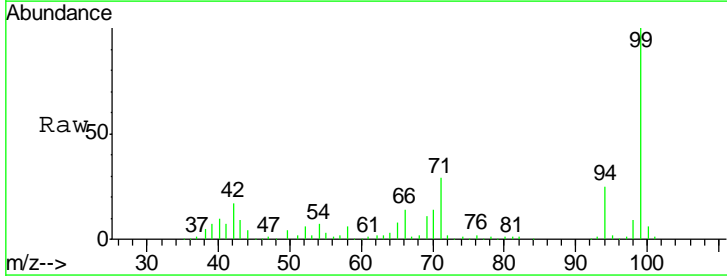
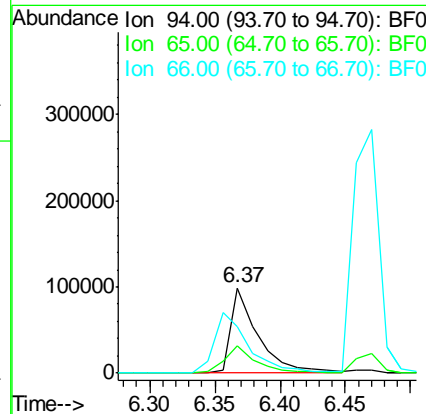
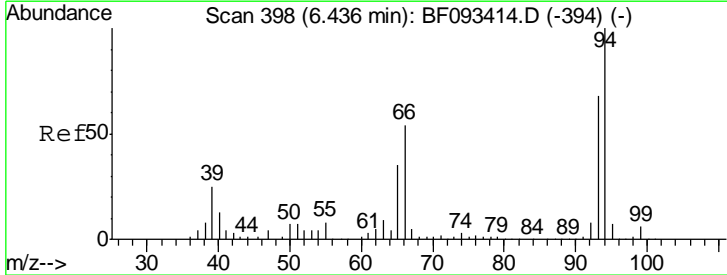
Ion	Ratio	Lower	Upper
99	100		
42	20.4	15.6	23.4
71	33.7	27.5	41.3

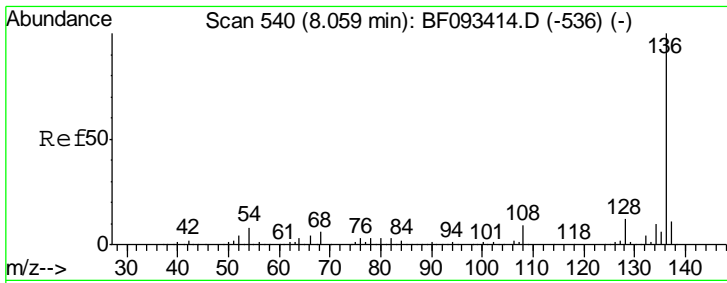


#10
 Phenol
 Concen: 8.69 ng
 RT: 6.37 min Scan# 392
 Delta R.T. -0.03 min
 Lab File: BF093716.D
 Acq: 16 Mar 2017 19:51

Tgt Ion: 94 Resp: 143514

Ion	Ratio	Lower	Upper
94	100		
65	31.5	21.4	61.4
66	54.6	44.0	84.0

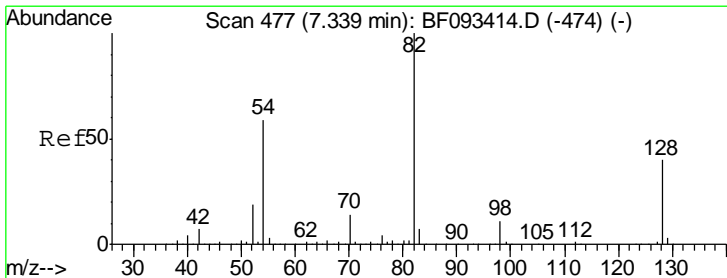
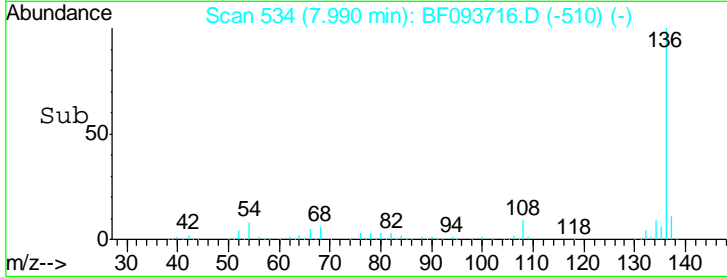
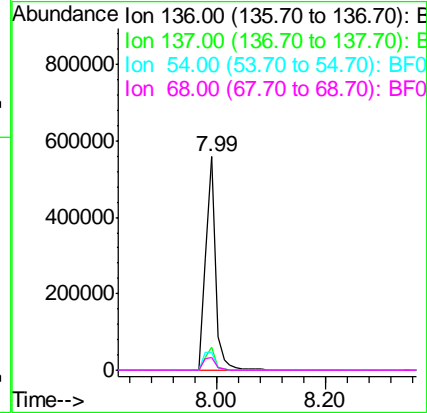
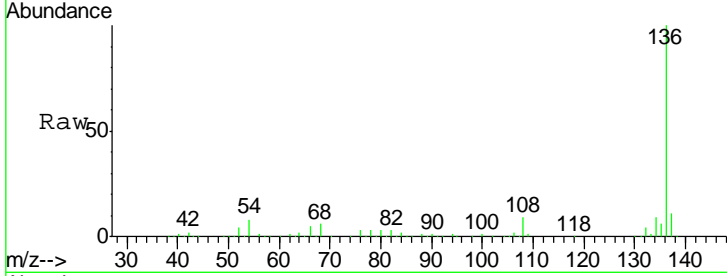




#21
 Naphthalene-d8
 Concen: 20.00 ng
 RT: 7.99 min Scan# 534
 Delta R.T. -0.02 min
 Lab File: BF093716.D
 Acq: 16 Mar 2017 19:51

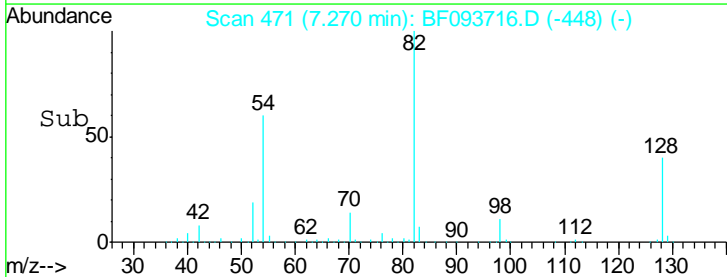
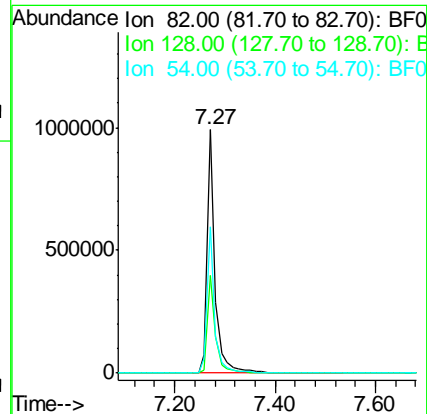
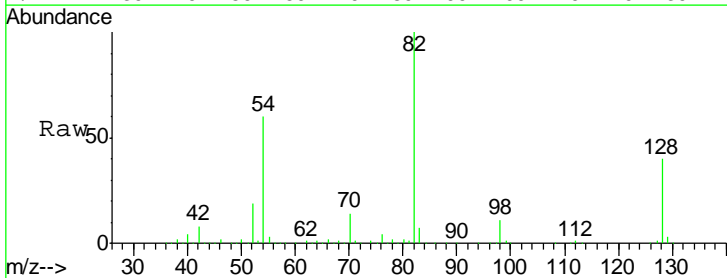
Instrument :
 BNA_F
 ClientSampleId :
 GRINNELL-TOPSOIL

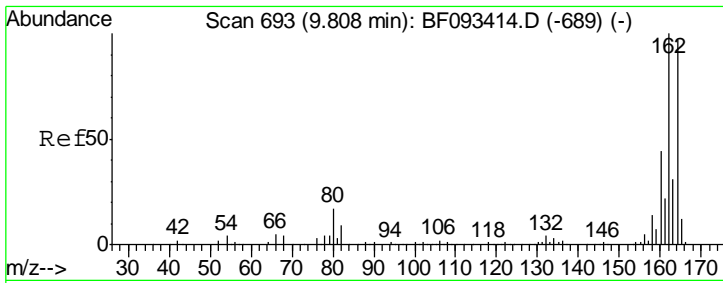
Tgt Ion	Resp	Lower	Upper
136	100		
137	10.6	8.4	12.6
54	8.3	4.5	6.7#
68	6.0	3.6	5.4#



#23
 Nitrobenzene-d5
 Concen: 86.50 ng
 RT: 7.27 min Scan# 471
 Delta R.T. -0.03 min
 Lab File: BF093716.D
 Acq: 16 Mar 2017 19:51

Tgt Ion	Resp	Lower	Upper
82	100		
128	40.1	34.6	52.0
54	60.2	39.5	59.3#

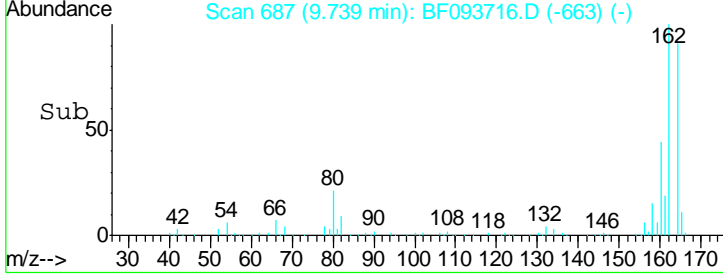
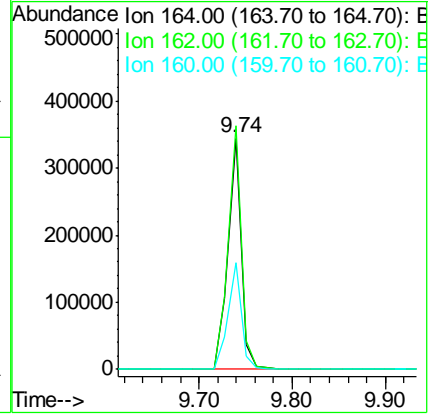
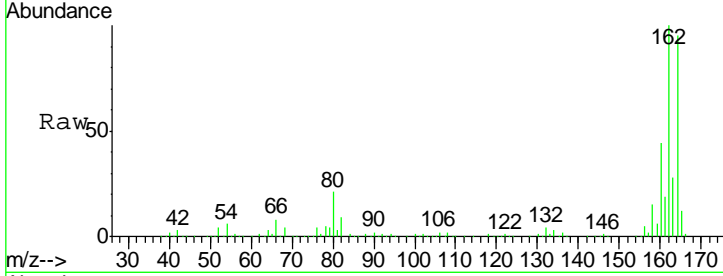




#38
 Acenaphthene-d10
 Concen: 20.00 ng
 RT: 9.74 min Scan# 687
 Delta R.T. -0.02 min
 Lab File: BF093716.D
 Acq: 16 Mar 2017 19:51

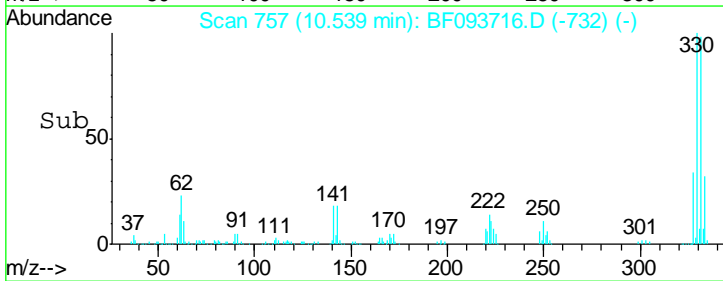
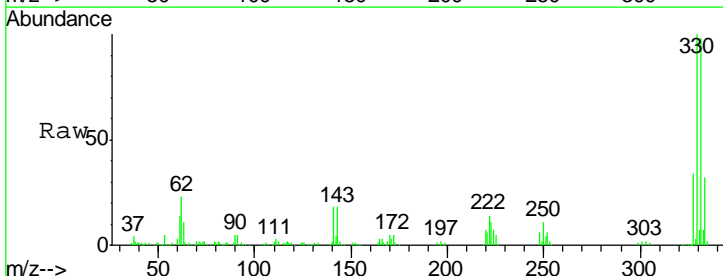
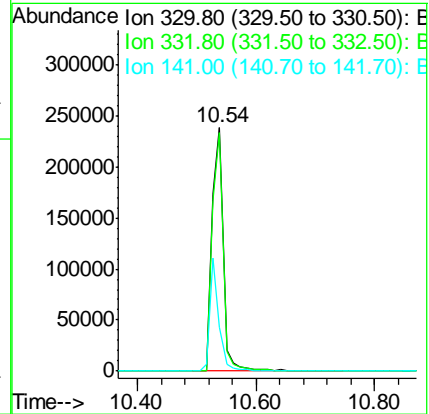
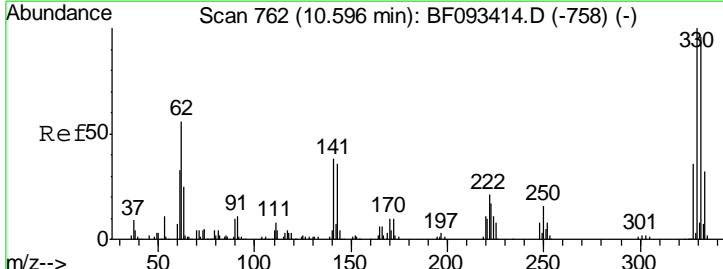
Instrument :
 BNA_F
ClientSampleId :
 GRINNELL-TOPSOIL

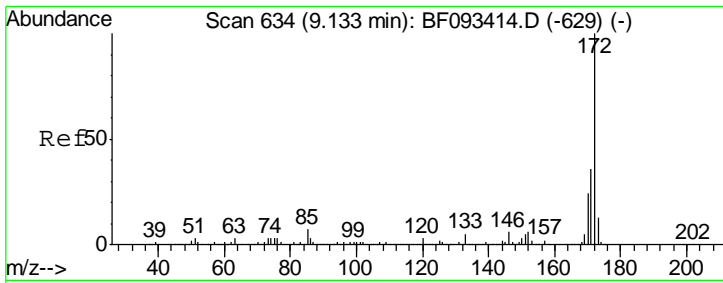
Tgt Ion	Resp	Lower	Upper
164	100		
162	105.3	80.2	120.2
160	46.1	36.9	55.3



#41
 2,4,6-Tribromophenol
 Concen: 141.98 ng
 RT: 10.54 min Scan# 757
 Delta R.T. -0.01 min
 Lab File: BF093716.D
 Acq: 16 Mar 2017 19:51

Tgt Ion	Resp	Lower	Upper
330	100		
332	97.2	77.4	116.2
141	37.9	34.1	51.1

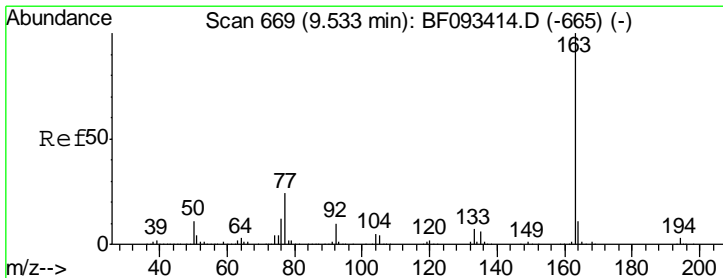
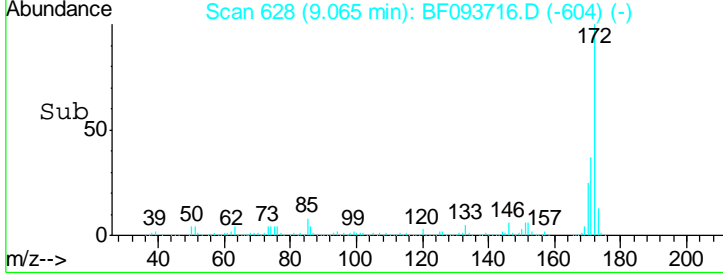
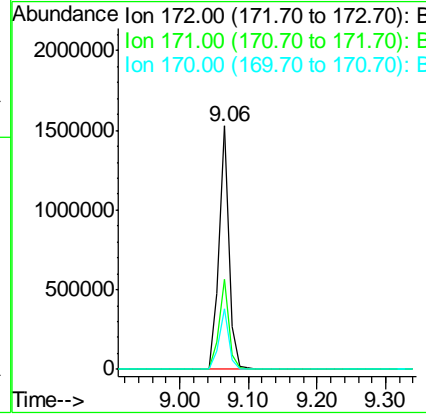
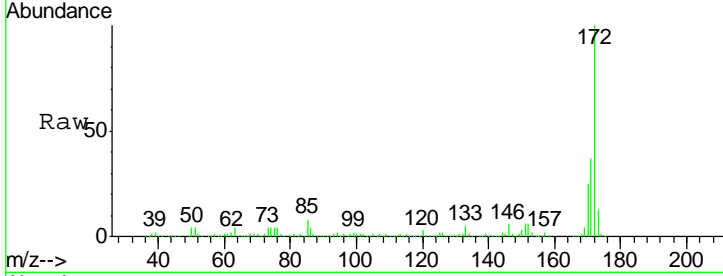




#44
 2-Fluorobiphenyl
 Concen: 87.28 ng
 RT: 9.06 min Scan# 628
 Delta R.T. -0.02 min
 Lab File: BF093716.D
 Acq: 16 Mar 2017 19:51

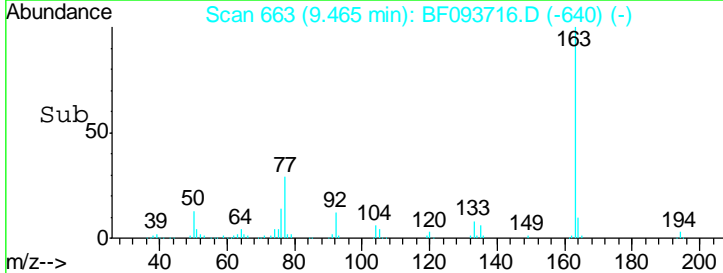
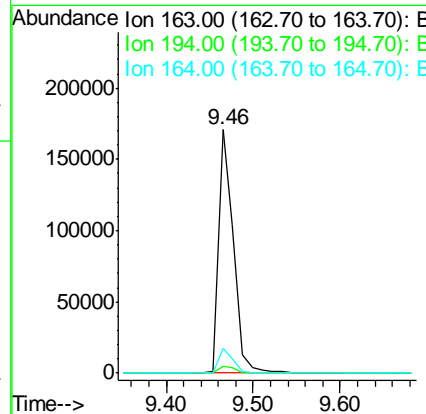
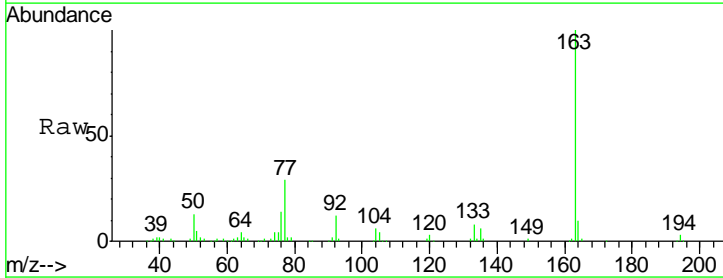
Instrument :
 BNA_F
 ClientSampleId :
 GRINNELL-TOPSOIL

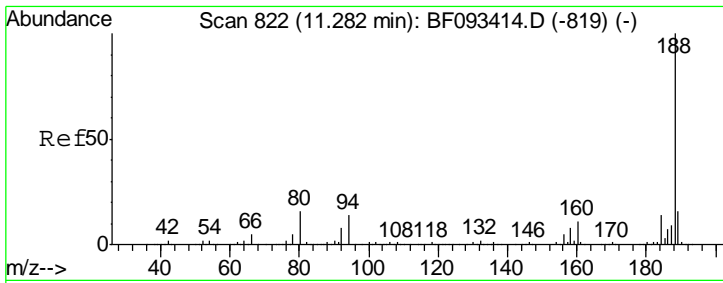
Tgt Ion	Resp	Lower	Upper
172	1599690		
171	36.8	29.4	44.0
170	24.7	20.2	30.4



#49
 Dimethylphthalate
 Concen: 9.07 ng
 RT: 9.46 min Scan# 663
 Delta R.T. -0.03 min
 Lab File: BF093716.D
 Acq: 16 Mar 2017 19:51

Tgt Ion	Resp	Lower	Upper
163	204992		
194	2.8	3.0	4.4#
164	10.1	8.0	12.0

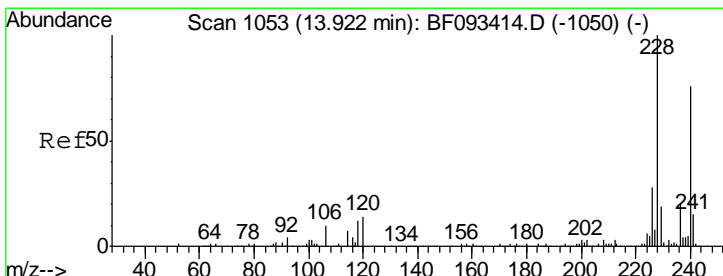
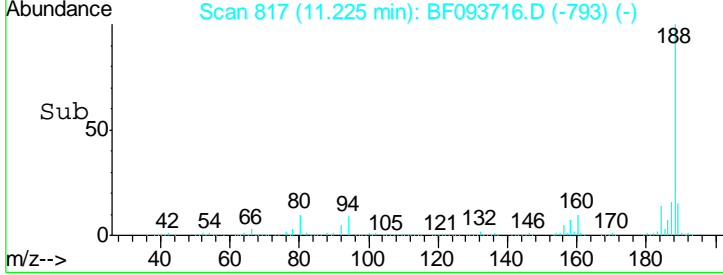
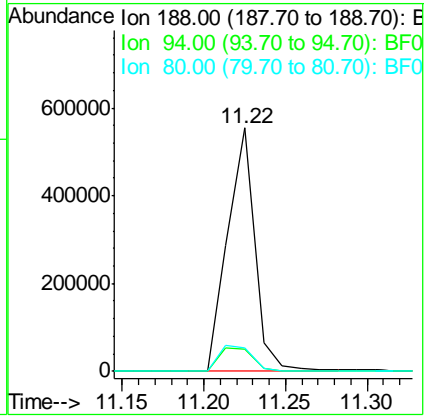
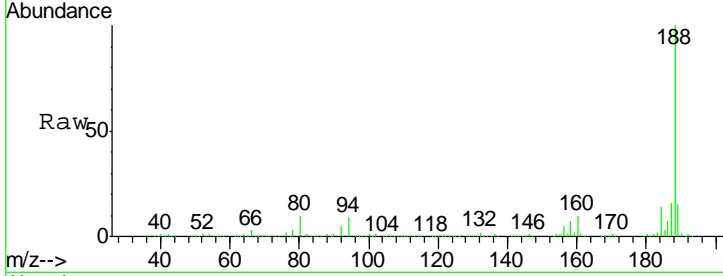




#63
 Phenanthrene-d10
 Concen: 20.00 ng
 RT: 11.22 min Scan# 817
 Delta R.T. -0.02 min
 Lab File: BF093716.D
 Acq: 16 Mar 2017 19:51

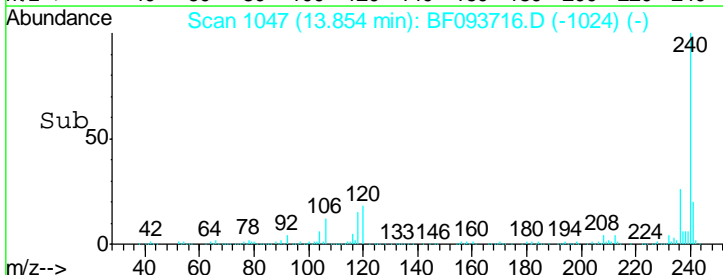
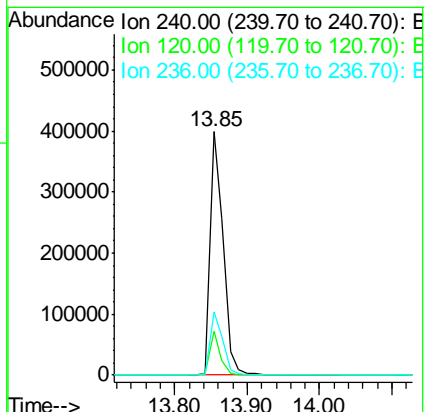
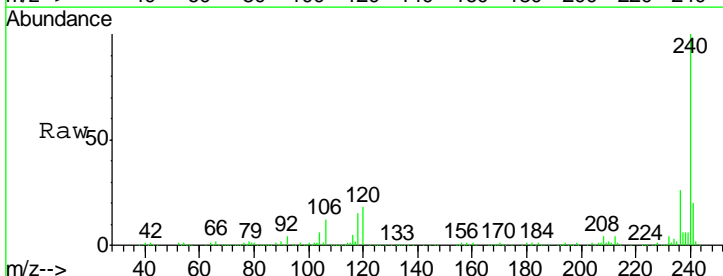
Instrument :
 BNA_F
ClientSampled :
 GRINNELL-TOPSOIL

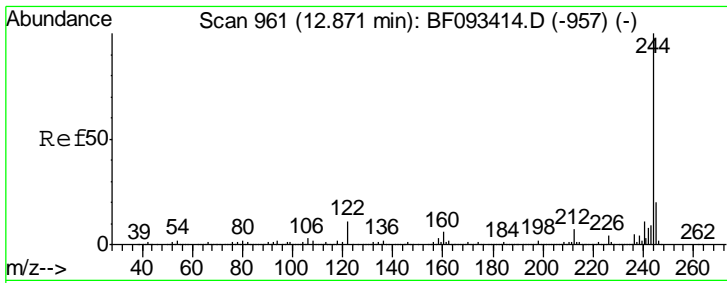
Tgt Ion	Resp	Lower	Upper
188	100		
94	9.1	10.0	15.0#
80	9.7	11.2	16.8#



#75
 Chrysene-d12
 Concen: 20.00 ng
 RT: 13.85 min Scan# 1047
 Delta R.T. -0.03 min
 Lab File: BF093716.D
 Acq: 16 Mar 2017 19:51

Tgt Ion	Resp	Lower	Upper
240	100		
120	17.8	12.9	19.3
236	26.0	20.9	31.3



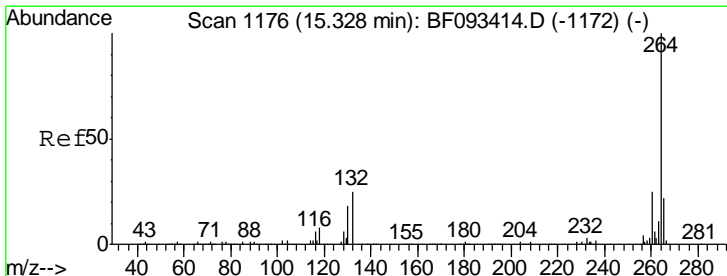
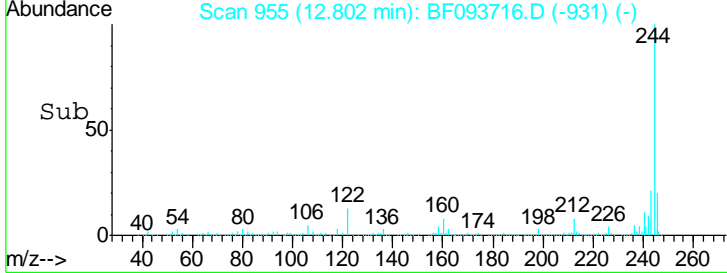
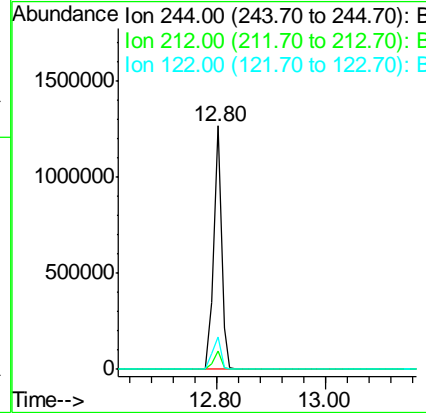
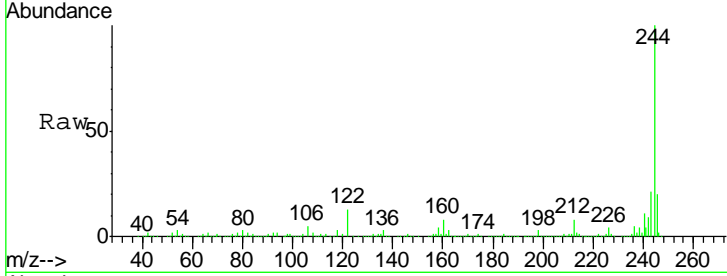


#78
 Terphenyl-d14
 Concen: 67.73 ng
 RT: 12.80 min Scan# 955
 Delta R.T. -0.02 min
 Lab File: BF093716.D
 Acq: 16 Mar 2017 19:51

Instrument :
 BNA_F
ClientSampleId :
 GRINNELL-TOPSOIL

Tgt Ion: 244 Resp: 1279065

Ion	Ratio	Lower	Upper
244	100		
212	7.7	6.2	9.2
122	13.4	11.4	17.2



#86
 Perylene-d12
 Concen: 20.00 ng
 RT: 15.26 min Scan# 1170
 Delta R.T. -0.02 min
 Lab File: BF093716.D
 Acq: 16 Mar 2017 19:51

Tgt Ion: 264 Resp: 343485

Ion	Ratio	Lower	Upper
264	100		
260	24.0	19.2	28.8
265	21.1	17.4	26.0

