

Data Path : Z:\HPCHEM1\BNA\_F\DATA\BF031816\  
 Data File : BF085558.D  
 Acq On : 19 Mar 2016 7:03  
 Operator : UM/SJ  
 Sample : H1788-09  
 Misc :  
 ALS Vial : 22 Sample Multiplier: 1

Instrument :  
 BNA\_F  
 ClientSampleId :  
 TW-5

Integration Parameters: rteint.p  
 Integrator: RTE  
 Smoothing : ON Filtering: 5  
 Sampling : 1 Min Area: 3 % of largest Peak  
 Start Thrs: 0.2 Max Peaks: 100  
 Stop Thrs : 0 Peak Location: TOP

If leading or trailing edge < 100 prefer < Baseline drop else tangent >  
 Peak separation: 5

Method : Z:\HPCHEM1\BNA\_F\METHODS\8270-BF031816.M  
 Title : ASP BNA STANDARDS FOR 5 POINT CALIBRATION

Signal : TIC

peak #	R.T. min	first scan	max scan	last scan	PK TY	peak height	corr. area	corr. % max.	% of total
1	3.281	80	87	88	rVB2	108314	101946	2.66%	0.402%
2	5.041	239	241	246	rBV	26221	41449	1.08%	0.164%
3	5.441	274	276	279	rBV	1092896	1541562	40.27%	6.084%
4	6.482	364	367	369	rBV	728892	987636	25.80%	3.898%
5	6.619	376	379	381	rBV	2798051	2651685	69.27%	10.466%
6	6.847	397	399	402	rBV	690089	729682	19.06%	2.880%
7	7.007	410	413	416	rBV	2586662	2430316	63.48%	9.592%
8	7.419	446	449	451	rBV	2104587	2198279	57.42%	8.676%
9	8.139	509	512	514	rBV	1087300	1013951	26.49%	4.002%
10	9.213	603	606	609	rBV	3455491	3543879	92.57%	13.987%
11	9.888	663	665	668	rBV	1197834	1074653	28.07%	4.241%
12	10.676	731	734	737	rBV	1950568	2214877	57.86%	8.742%
13	11.373	792	795	797	rBV	1293827	1124515	29.37%	4.438%
14	12.779	916	918	921	rBV2	66683	66653	1.74%	0.263%
15	12.962	931	934	936	rBV	3615262	3828302	100.00%	15.110%
16	14.002	1023	1025	1028	rBV	1005036	981298	25.63%	3.873%
17	15.431	1147	1150	1153	rBV	684693	806170	21.06%	3.182%

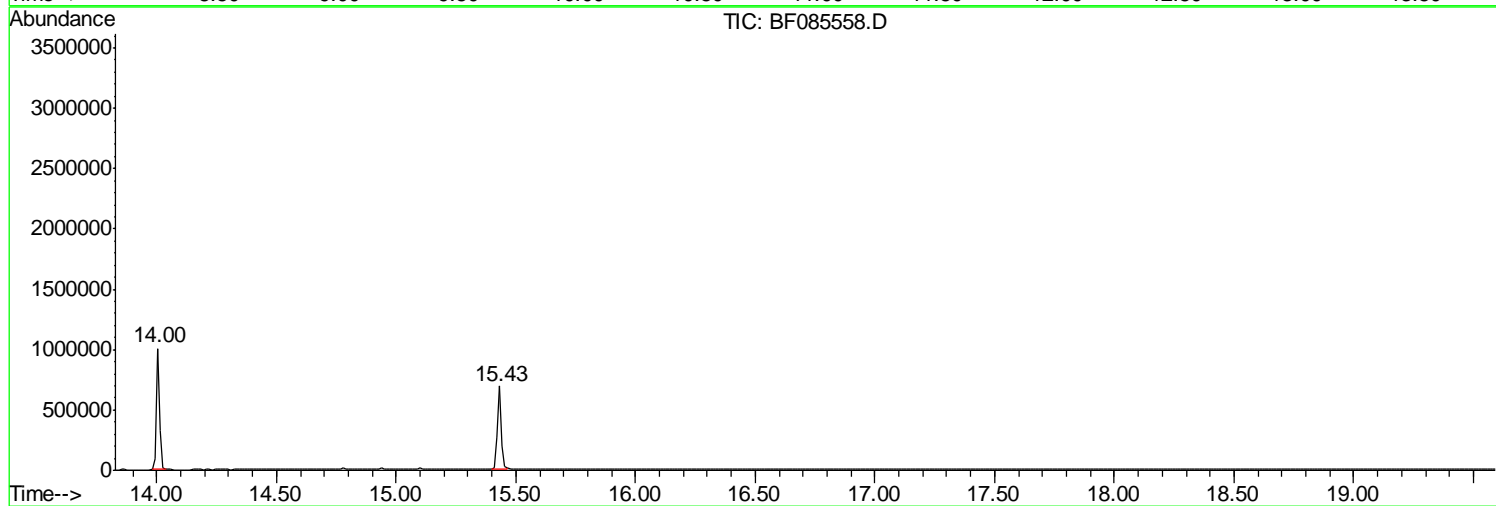
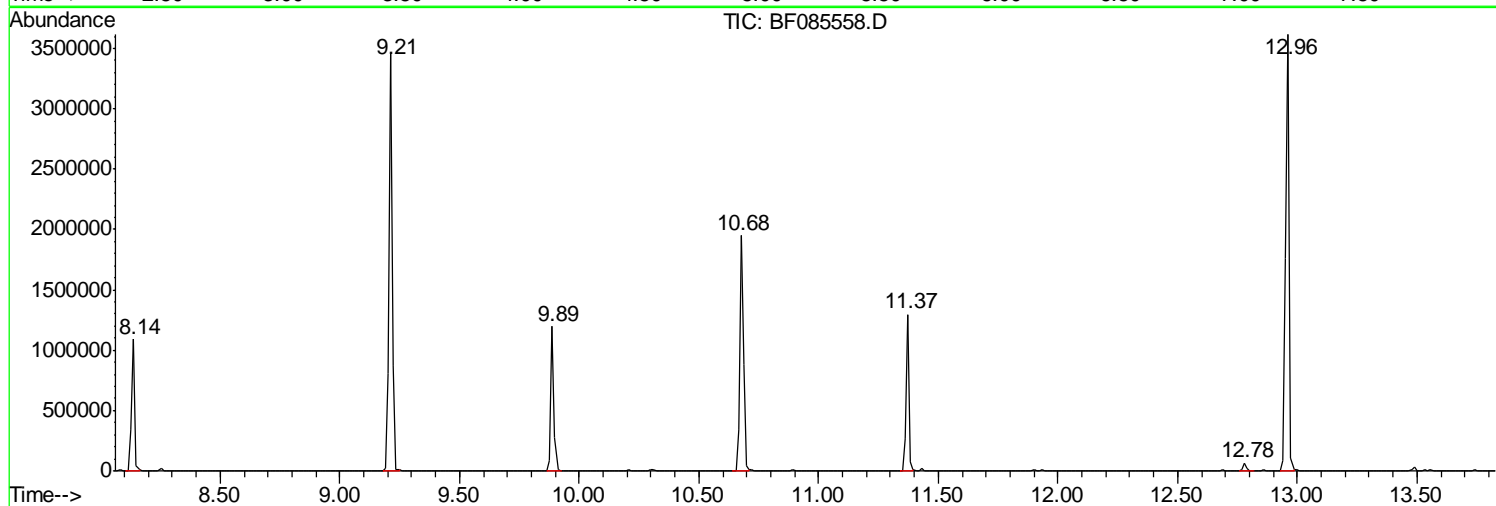
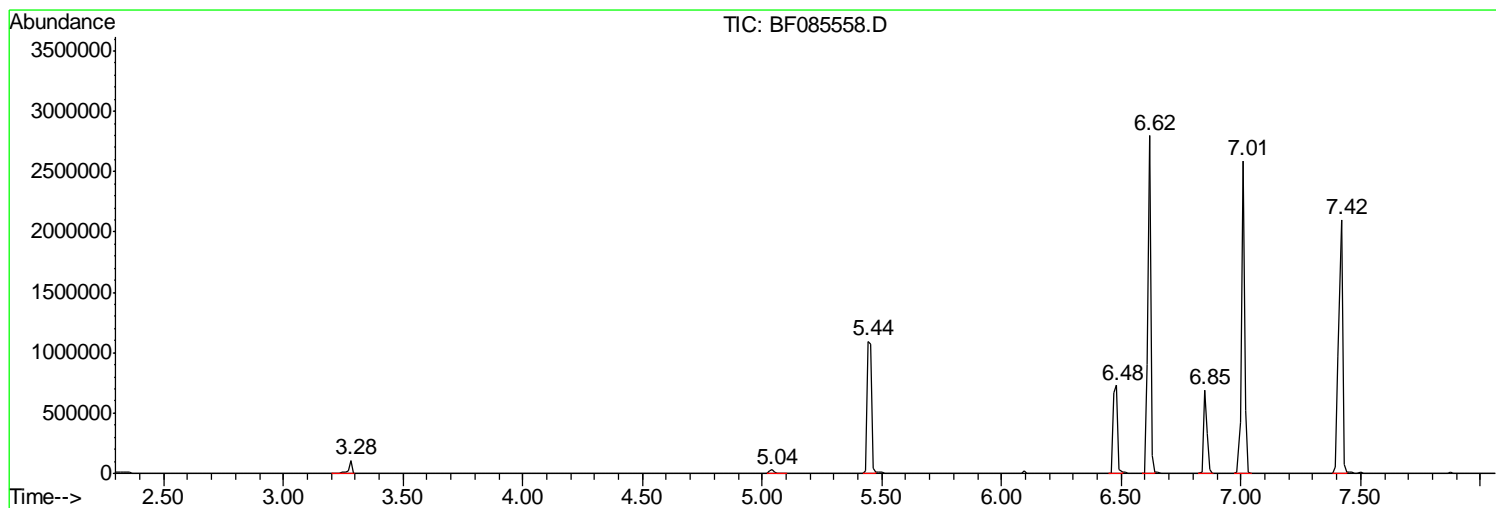
Sum of corrected areas: 25336853

Data Path : Z:\HPCHEM1\BNA\_F\DATA\BF031816\  
Data File : BF085558.D  
Acq On : 19 Mar 2016 7:03  
Operator : UM/SJ  
Sample : H1788-09  
Misc :  
ALS Vial : 22 Sample Multiplier: 1

Instrument :  
BNA\_F  
ClientSampled :  
TW-5

Quant Method : Z:\HPCHEM1\BNA\_F\METHODS\8270-BF031816.M  
Quant Title : ASP BNA STANDARDS FOR 5 POINT CALIBRATION

TIC Library : C:\DATABASE\NIST02.L  
TIC Integration Parameters: LSCINT.P



Data Path : Z:\HPCHEM1\BNA\_F\DATA\BF031816\  
 Data File : BF085558.D  
 Acq On : 19 Mar 2016 7:03  
 Operator : UM/SJ  
 Sample : H1788-09  
 Misc :  
 ALS Vial : 22 Sample Multiplier: 1

Instrument :  
 BNA\_F  
 ClientSampleID :  
 TW-5

Quant Method : Z:\HPCHEM1\BNA\_F\METHODS\8270-BF031816.M  
 Quant Title : ASP BNA STANDARDS FOR 5 POINT CALIBRATION

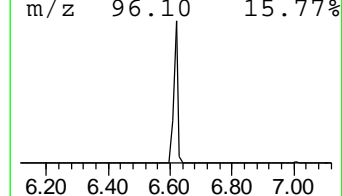
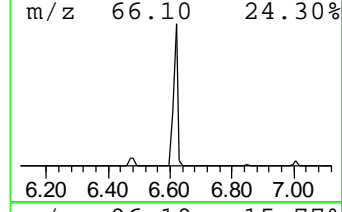
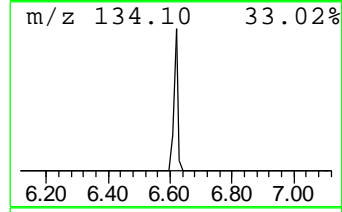
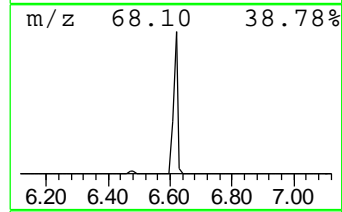
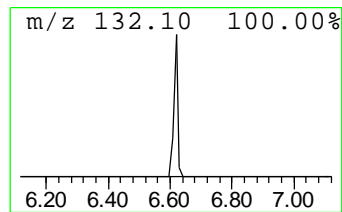
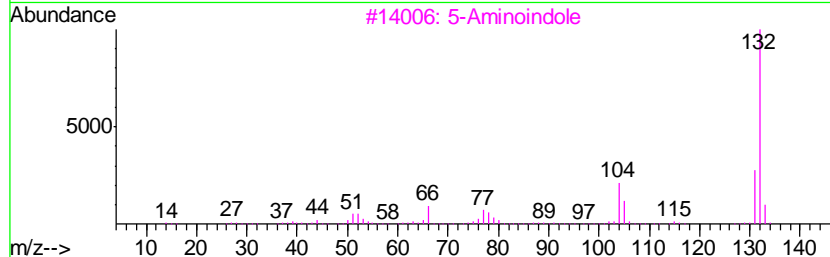
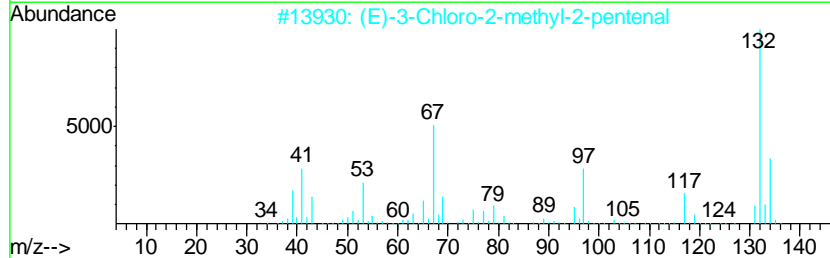
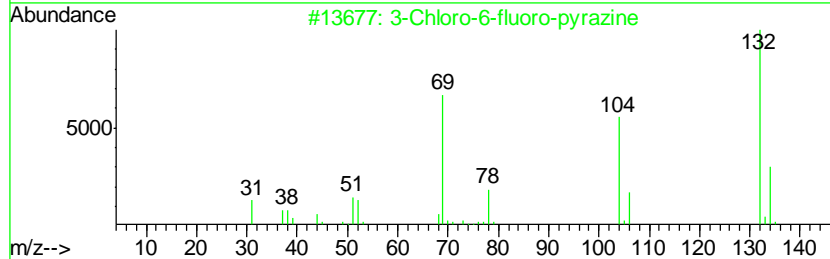
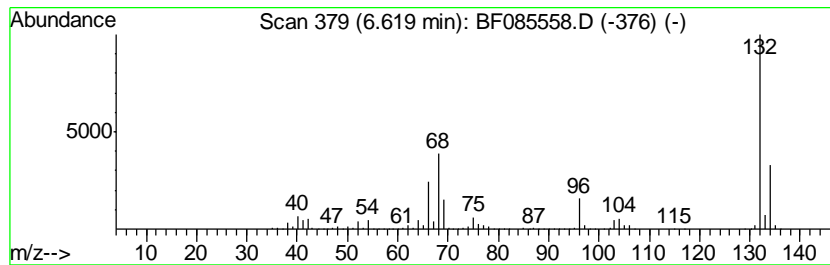
TIC Library : C:\DATABASE\NIST02.L  
 TIC Integration Parameters: LSCINT.P

\*\*\*\*\*  
 Peak Number 2 unknown6.62 Concentration Rank 1

R.T.	EstConc	Area	Relative to ISTD	R.T.
6.62	72.68 ng	2651690	1,4-Dichlorobenzene-d4	6.85

Hit#	of	Tentative ID	MW	MolForm	CAS#	Qual
1	5	3-Chloro-6-fluoro-pyrazine	132	C4H2ClFN2	1000146-10-7	27
2		(E)-3-Chloro-2-methyl-2-pentenal	132	C6H9ClO	031357-76-3	12
3		5-Aminoindole	132	C8H8N2	005192-03-0	12
4		4-Chloro-6-fluoro-pyrimidine	132	C4H2ClFN2	051422-01-6	9
5		4-Chloro-2-fluoro-pyrimidine	132	C4H2ClFN2	051422-00-5	9



Data Path : Z:\HPCHEM1\BNA\_F\DATA\BF031816\  
Data File : BF085558.D  
Acq On : 19 Mar 2016 7:03  
Operator : UM/SJ  
Sample : H1788-09  
Misc :  
ALS Vial : 22 Sample Multiplier: 1

Instrument :  
BNA\_F  
ClientSampleId :  
TW-5

Quant Method : Z:\HPCHEM1\BNA\_F\METHODS\8270-BF031816.M  
Quant Title : ASP BNA STANDARDS FOR 5 POINT CALIBRATION

TIC Library : C:\DATABASE\NIST02.L  
TIC Integration Parameters: LSCINT.P

TIC Top Hit name	RT	EstConc	Units	Response	--Internal Standard--			
					#	RT	Resp	Conc
unknown6.62	6.62	72.7	ng	2651690	1	6.85	729682	20.0