

Data Path : Z:\svoasrv\HPCHEM1\BNA_F\Data\BF032125\
 Data File : BF142024.D
 Acq On : 21 Mar 2025 11:55
 Operator : RC/JU
 Sample : PB167228BL
 Misc :
 ALS Vial : 3 Sample Multiplier: 1

Instrument :
 BNA_F
 ClientSampleId :
 PB167228BL

Integration Parameters: rteint.p
 Integrator: RTE
 Smoothing : ON Filtering: 5
 Sampling : 1 Min Area: 3 % of largest Peak
 Start Thrs: 0.2 Max Peaks: 100
 Stop Thrs : 0 Peak Location: TOP

If leading or trailing edge < 100 prefer < Baseline drop else tangent >
 Peak separation: 5

Method : Z:\svoasrv\HPCHEM1\BNA_F\Methods\8270-BF031025.M
 Title : ASP BNA STANDARDS FOR 5 POINT CALIBRATION

Signal : TIC: BF142024.D\data.ms

peak #	R.T. min	first scan	max scan	last scan	PK TY	peak height	corr. area	corr. % max.	% of total
1	2.210	7	20	28	rVB	47808	94431	1.63%	0.292%
2	3.993	316	323	334	rVB	60855	98163	1.69%	0.304%
3	5.498	572	579	584	rBV	3022966	4117772	70.86%	12.739%
4	6.498	742	749	754	rBV	2825962	4059231	69.85%	12.558%
5	6.875	807	813	818	rBV	687805	858117	14.77%	2.655%
6	7.434	901	908	913	rBV	2014940	2785374	47.93%	8.617%
7	8.157	1025	1031	1053	rBV	820081	1142520	19.66%	3.535%
8	9.228	1207	1213	1232	rBV	4339780	5811029	100.00%	17.977%
9	9.910	1323	1329	1345	rBV	1054167	1352492	23.27%	4.184%
10	10.698	1457	1463	1482	rBV	2943020	3817725	65.70%	11.811%
11	11.392	1576	1581	1589	rBV	985936	1329970	22.89%	4.114%
12	12.980	1845	1851	1856	rBV	4283055	5537954	95.30%	17.132%
13	14.033	2025	2030	2042	rVB	516660	700297	12.05%	2.166%
14	15.510	2275	2281	2300	rVB	328704	619305	10.66%	1.916%

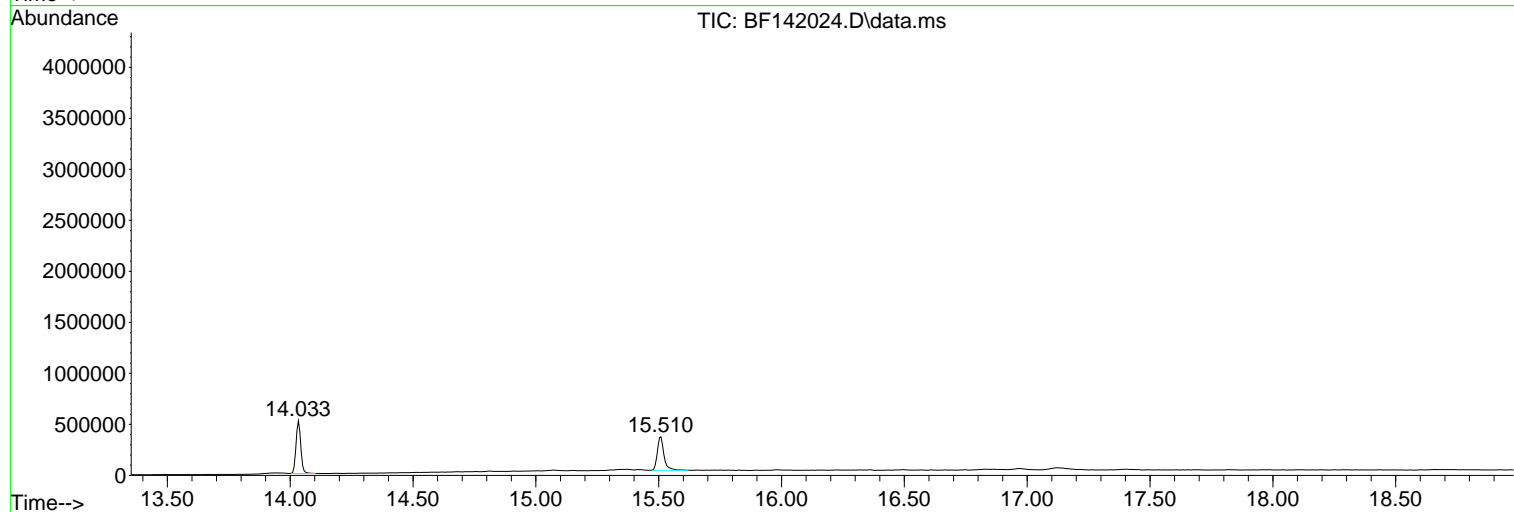
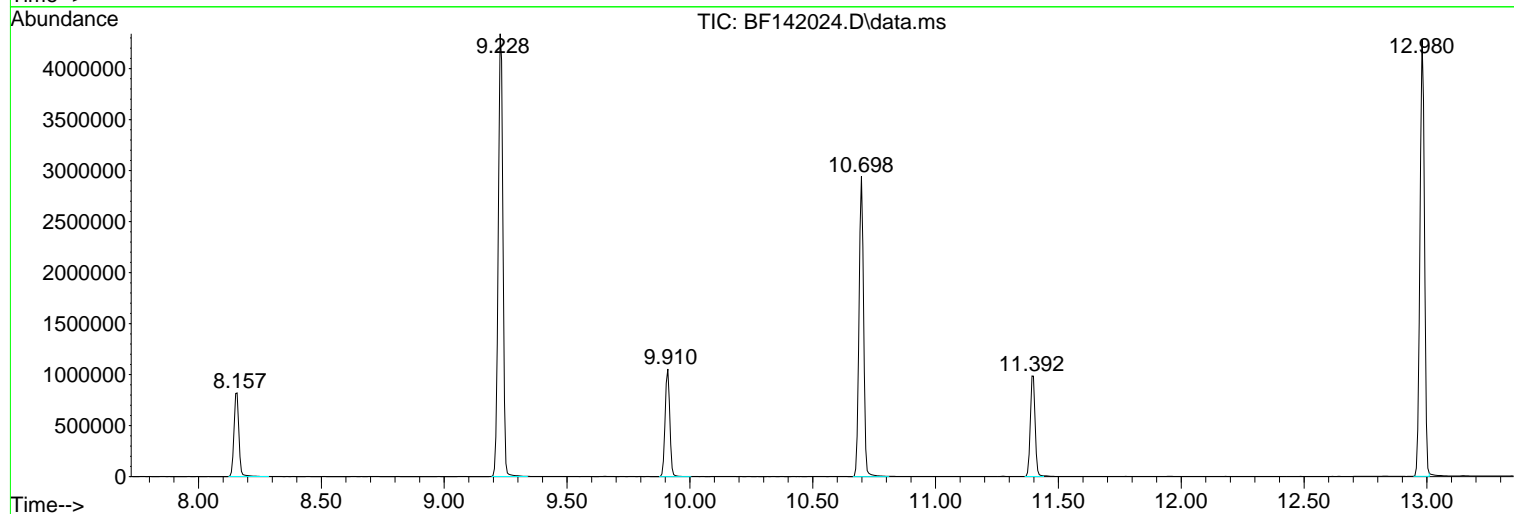
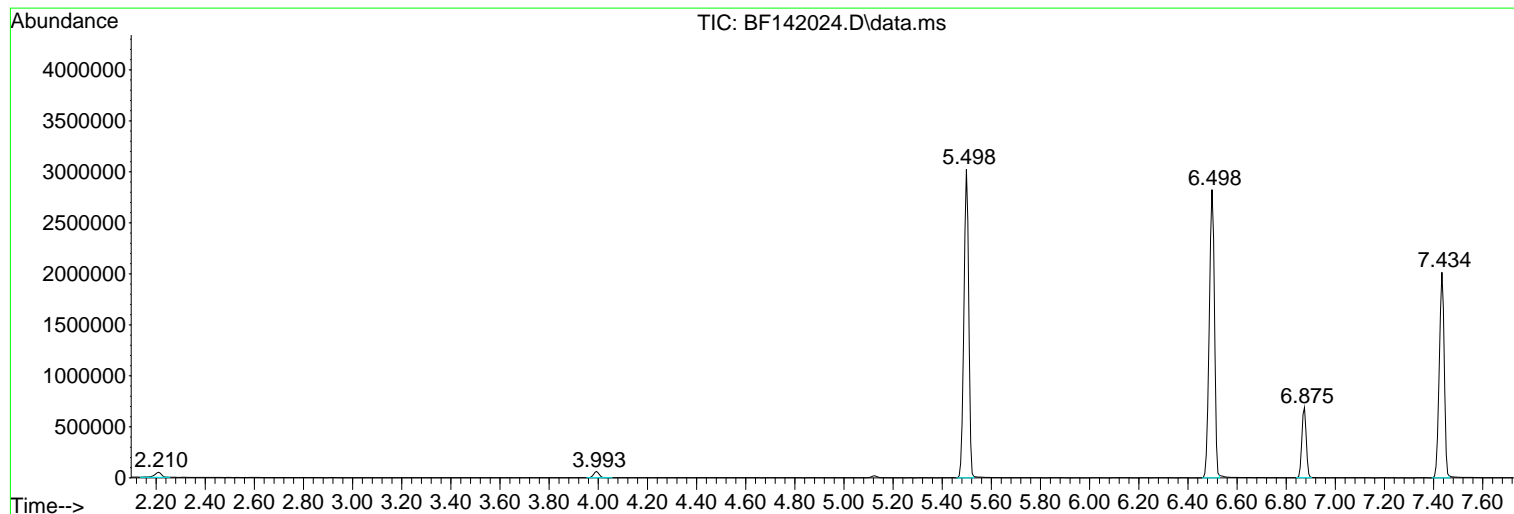
Sum of corrected areas: 32324380

Data Path : Z:\svoasrv\HPCHEM1\BNA_F\Data\BF032125\
Data File : BF142024.D
Acq On : 21 Mar 2025 11:55
Operator : RC/JU
Sample : PB167228BL
Misc :
ALS Vial : 3 Sample Multiplier: 1

Instrument :
BNA_F
ClientSampleId :
PB167228BL

Quant Method : Z:\svoasrv\HPCHEM1\BNA_F\Methods\8270-BF031025.M
Quant Title : ASP BNA STANDARDS FOR 5 POINT CALIBRATION

TIC Library : C:\Database\NIST20.L
TIC Integration Parameters: LSCINT.P



Data Path : Z:\svoasrv\HPCHEM1\BNA_F\Data\BF032125\
 Data File : BF142024.D
 Acq On : 21 Mar 2025 11:55
 Operator : RC/JU
 Sample : PB167228BL
 Misc :
 ALS Vial : 3 Sample Multiplier: 1

Instrument :
 BNA_F
 ClientSampleId :
 PB167228BL

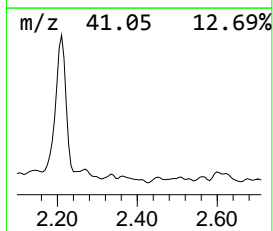
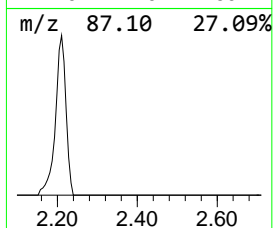
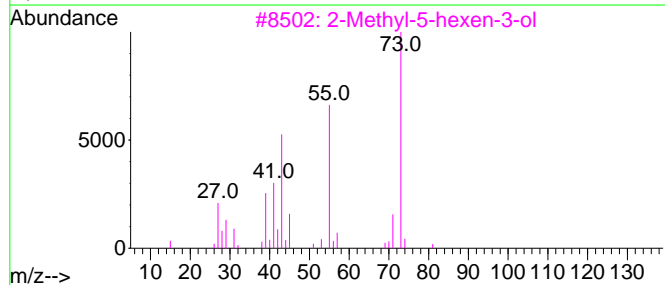
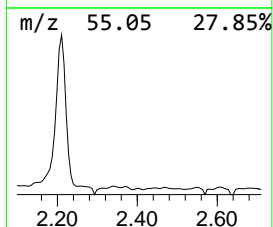
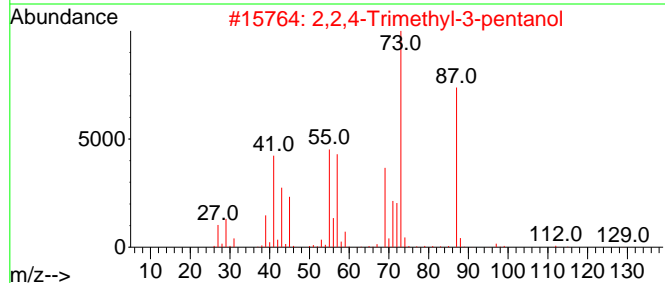
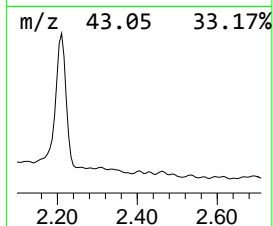
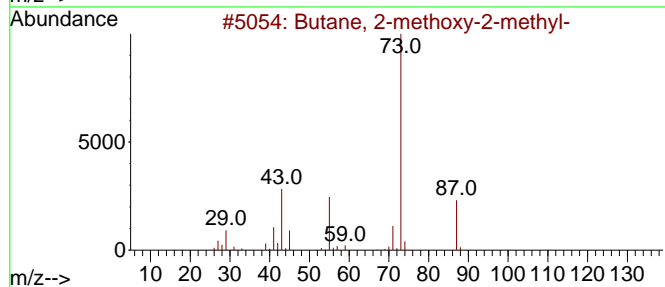
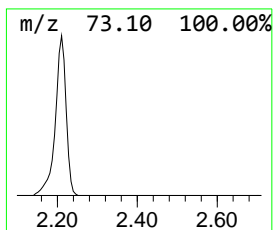
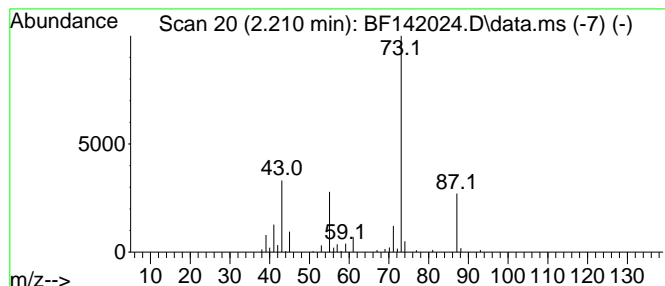
Quant Method : Z:\svoasrv\HPCHEM1\BNA_F\Methods\8270-BF031025.M
 Quant Title : ASP BNA STANDARDS FOR 5 POINT CALIBRATION

TIC Library : C:\Database\NIST20.L
 TIC Integration Parameters: LSCINT.P

 Peak Number 1 Butane, 2-methoxy-2-methyl- Concentration Rank 2

R.T.	EstConc	Area	Relative to ISTD	R.T.
2.210	2.20 ng	94431	1,4-Dichlorobenzene-d4	6.875

Hit#	of	5	Tentative ID	MW	MolForm	CAS#	Qual
1			Butane, 2-methoxy-2-methyl-	102	C6H14O	000994-05-8	83
2			2,2,4-Trimethyl-3-pentanol	130	C8H18O	005162-48-1	40
3			2-Methyl-5-hexen-3-ol	114	C7H14O	032815-70-6	25
4			Octanal, 7-methoxy-3,7-dimethyl-	186	C11H22O2	003613-30-7	12
5			Boronic acid, ethyl-, dimethyl e...	102	C4H11BO2	007318-82-3	12



Data Path : Z:\svoasrv\HPCHEM1\BNA_F\Data\BF032125\
Data File : BF142024.D
Acq On : 21 Mar 2025 11:55
Operator : RC/JU
Sample : PB167228BL
Misc :
ALS Vial : 3 Sample Multiplier: 1

Instrument :
BNA_F
ClientSampleId :
PB167228BL

Quant Method : Z:\svoasrv\HPCHEM1\BNA_F\Methods\8270-BF031025.M
Quant Title : ASP BNA STANDARDS FOR 5 POINT CALIBRATION

TIC Library : C:\Database\NIST0.L
TIC Integration Parameters: LSCINT.P

TIC Top Hit name	RT	EstConc	Units	Response	--Internal Standard--			
					#	RT	Resp	Conc
Butane, 2-metho...	2.210	2.2	ng	94431	1	6.875	858117	20.0