

Data Path : Z:\HPCHEM1\BNA\_F\DATA\BF032415\  
 Data File : BF077942.D  
 Acq On : 25 Mar 2015 7:54  
 Operator : TP/IZ  
 Sample : G1615-10  
 Misc :  
 ALS Vial : 33 Sample Multiplier: 1

Instrument :  
 BNA\_F  
 ClientSampleId :  
 SB-19-2

Integration Parameters: rteint.p  
 Integrator: RTE  
 Smoothing : ON Filtering: 5  
 Sampling : 1 Min Area: 3 % of largest Peak  
 Start Thrs: 0.2 Max Peaks: 100  
 Stop Thrs : 0 Peak Location: TOP

If leading or trailing edge < 100 prefer < Baseline drop else tangent >  
 Peak separation: 5

Method : Z:\HPCHEM1\BNA\_F\METHODS\8270-BF031115.M  
 Title : ASP BNA STANDARDS FOR 5 POINT CALIBRATION

Signal : TIC

peak #	R.T. min	first scan	max scan	last scan	PK TY	peak height	corr. area	corr. % max.	% of total
1	1.047	10	14	17	rVB	476710	793154	23.74%	5.044%
2	1.264	30	33	36	rBV	3044707	3340433	100.00%	21.243%
3	1.390	40	44	47	rBV	466422	732670	21.93%	4.659%
4	1.550	56	58	61	rVB	56090	64016	1.92%	0.407%
5	1.767	75	77	88	rVB	60821	94957	2.84%	0.604%
6	4.864	346	348	354	rBV	101393	125666	3.76%	0.799%
7	5.402	393	395	398	rBV	699357	853109	25.54%	5.425%
8	6.693	506	508	511	rBV	764900	879796	26.34%	5.595%
9	6.830	518	520	523	rBV	1048517	962900	28.83%	6.124%
10	7.116	543	545	548	rVB	278507	251744	7.54%	1.601%
11	7.299	559	561	564	rBV	639909	754479	22.59%	4.798%
12	7.813	603	606	608	rBV	652437	571057	17.10%	3.632%
13	8.693	681	683	686	rBV	400461	353536	10.58%	2.248%
14	10.042	799	801	804	rBV	1441873	1255194	37.58%	7.982%
15	10.556	843	846	848	rBV	162171	201792	6.04%	1.283%
16	10.865	871	873	876	rVB	459468	416602	12.47%	2.649%
17	11.848	956	959	961	rBV	553907	676175	20.24%	4.300%
18	12.602	1023	1025	1027	rBV	41189	40408	1.21%	0.257%
19	12.705	1031	1034	1036	rVB	422581	448982	13.44%	2.855%
20	14.694	1205	1208	1211	rBV	1386312	1442127	43.17%	9.171%
21	15.894	1308	1313	1319	rBV2	40683	112826	3.38%	0.718%
22	15.986	1319	1321	1324	rVV	469376	527553	15.79%	3.355%
23	17.780	1475	1478	1482	rBV	373572	572633	17.14%	3.642%
24	18.214	1513	1516	1521	rVB	39817	76453	2.29%	0.486%
25	18.763	1561	1564	1568	rBV	39548	93472	2.80%	0.594%
26	19.414	1619	1621	1626	rVB2	39698	82865	2.48%	0.527%

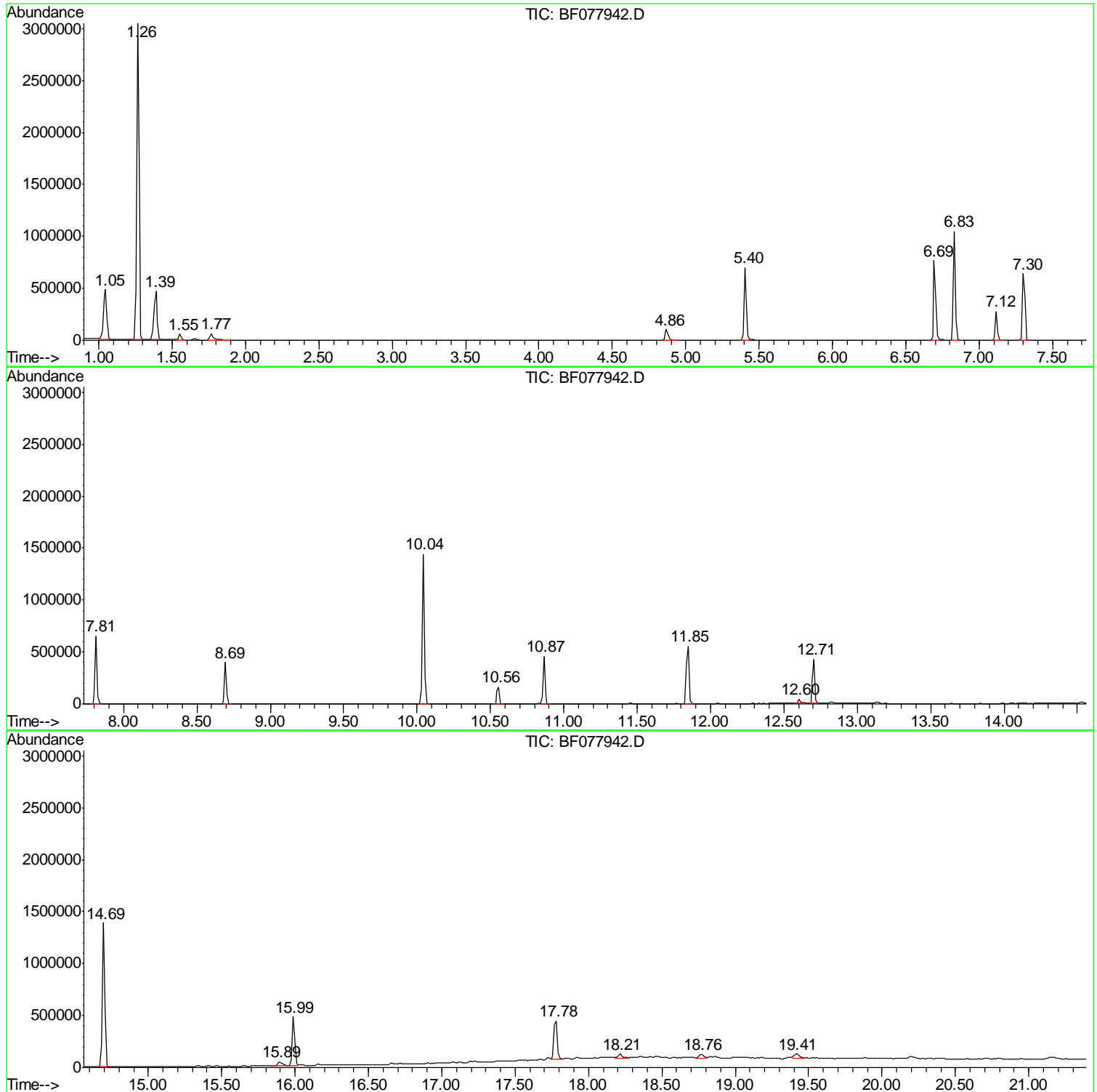
Sum of corrected areas: 15724599

Data Path : Z:\HPCHEM1\BNA\_F\DATA\BF032415\  
Data File : BF077942.D  
Acq On : 25 Mar 2015 7:54  
Operator : TP/IZ  
Sample : G1615-10  
Misc :  
ALS Vial : 33 Sample Multiplier: 1

Instrument :  
BNA\_F  
ClientSampleId :  
SB-19-2

Quant Method : Z:\HPCHEM1\BNA\_F\METHODS\8270-BF031115.M  
Quant Title : ASP BNA STANDARDS FOR 5 POINT CALIBRATION

TIC Library : C:\DATABASE\NIST02.L  
TIC Integration Parameters: LSCINT.P



Data Path : Z:\HPCHEM1\BNA\_F\DATA\BF032415\  
 Data File : BF077942.D  
 Acq On : 25 Mar 2015 7:54  
 Operator : TP/IZ  
 Sample : G1615-10  
 Misc :  
 ALS Vial : 33 Sample Multiplier: 1

Instrument :  
 BNA\_F  
 ClientSampled :  
 SB-19-2

Quant Method : Z:\HPCHEM1\BNA\_F\METHODS\8270-BF031115.M  
 Quant Title : ASP BNA STANDARDS FOR 5 POINT CALIBRATION

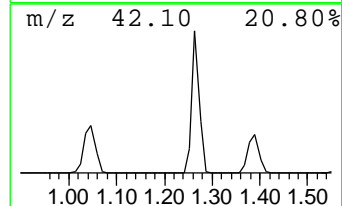
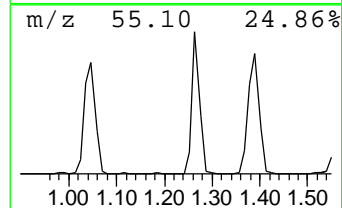
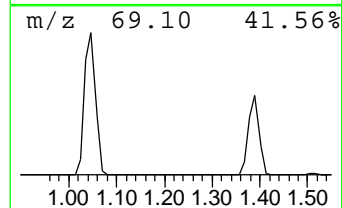
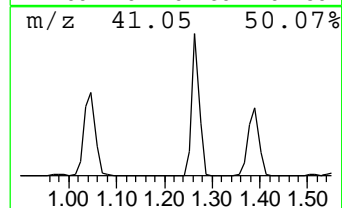
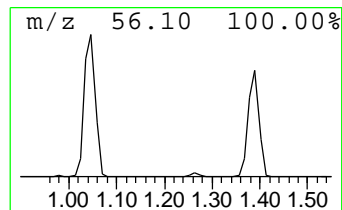
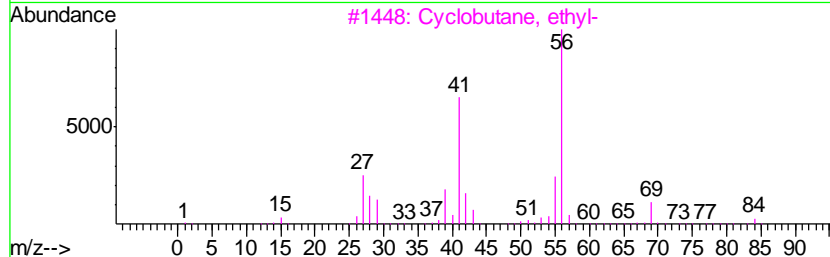
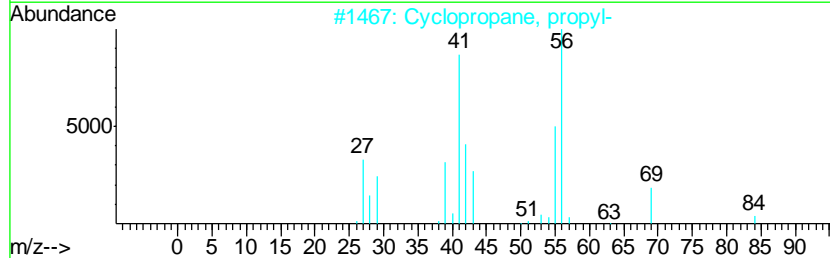
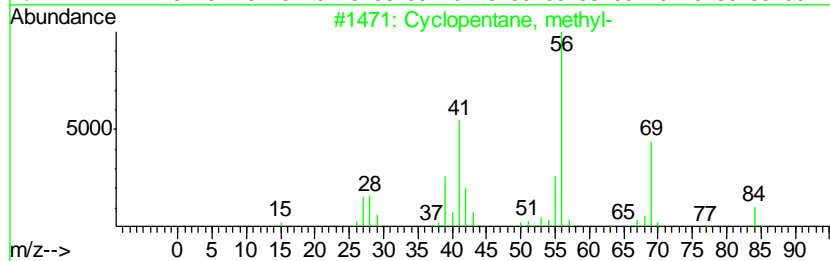
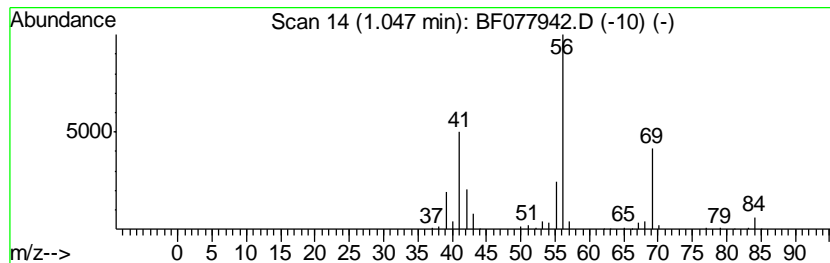
TIC Library : C:\DATABASE\NIST02.L  
 TIC Integration Parameters: LSCINT.P

\*\*\*\*\*  
 Peak Number 1 Cyclopentane, methyl- Concentration Rank 3

R.T.	EstConc	Area	Relative to ISTD	R.T.
1.05	63.01 ng	793154	1,4-Dichlorobenzene-d4	7.12

Hit#	of	Tentative ID	MW	MolForm	CAS#	Qual
1	5	Cyclopentane, methyl-	84	C6H12	000096-37-7	87
2		Cyclopropane, propyl-	84	C6H12	002415-72-7	78
3		Cyclobutane, ethyl-	84	C6H12	004806-61-5	72
4		Propane, 2-cyclopropyl-	84	C6H12	003638-35-5	64
5		Cyclopentane, 1,1-dimethyl-	98	C7H14	001638-26-2	56



Data Path : Z:\HPCHEM1\BNA\_F\DATA\BF032415\  
 Data File : BF077942.D  
 Acq On : 25 Mar 2015 7:54  
 Operator : TP/IZ  
 Sample : G1615-10  
 Misc :  
 ALS Vial : 33 Sample Multiplier: 1

Instrument :  
 BNA\_F  
 ClientSampled :  
 SB-19-2

Quant Method : Z:\HPCHEM1\BNA\_F\METHODS\8270-BF031115.M  
 Quant Title : ASP BNA STANDARDS FOR 5 POINT CALIBRATION

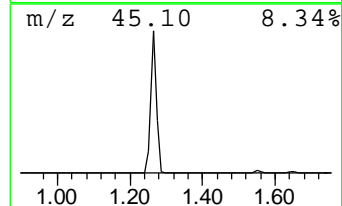
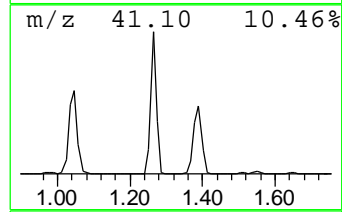
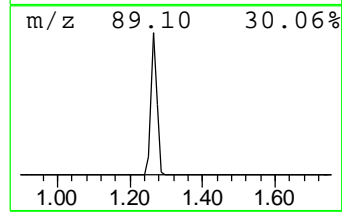
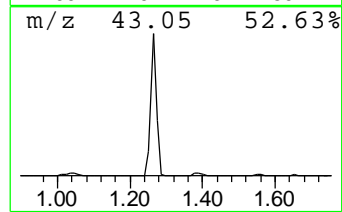
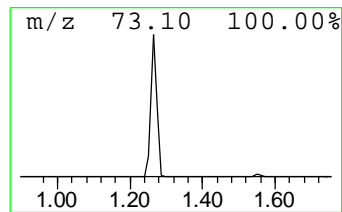
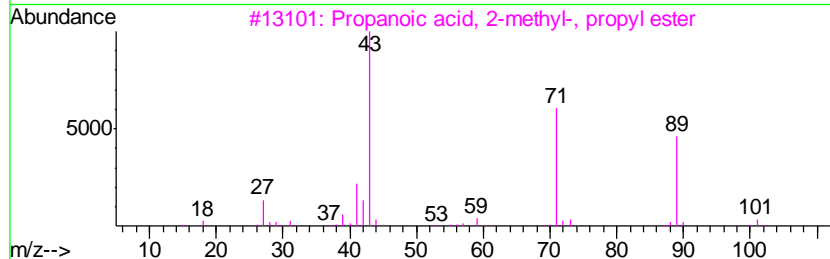
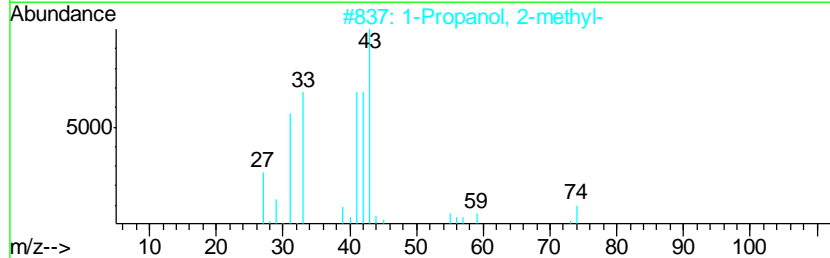
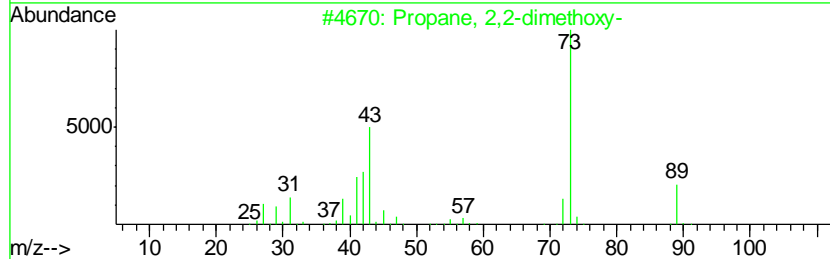
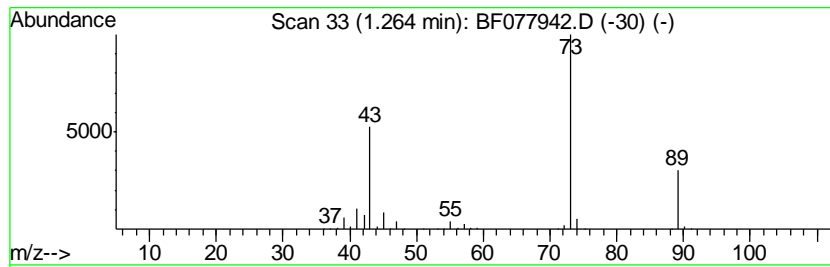
TIC Library : C:\DATABASE\NIST02.L  
 TIC Integration Parameters: LSCINT.P

\*\*\*\*\*  
 Peak Number 2 Propane, 2,2-dimethoxy- Concentration Rank 1

R.T.	EstConc	Area	Relative to ISTD	R.T.
1.26	265.38 ng	3340430	1,4-Dichlorobenzene-d4	7.12

Hit#	of	Tentative ID	MW	MolForm	CAS#	Qual
1	5	Propane, 2,2-dimethoxy-	104	C5H12O2	000077-76-9	72
2		1-Propanol, 2-methyl-	74	C4H10O	000078-83-1	9
3		Propanoic acid, 2-methyl-, propy...	130	C7H14O2	000644-49-5	9
4		Propane, 2-methoxy-2-methyl-	88	C5H12O	001634-04-4	9
5		1-Hexen-4-ol, 1-chloro-3,5-dimet...	162	C8H15ClO	100244-09-5	9



Data Path : Z:\HPCHEM1\BNA\_F\DATA\BF032415\  
 Data File : BF077942.D  
 Acq On : 25 Mar 2015 7:54  
 Operator : TP/IZ  
 Sample : G1615-10  
 Misc :  
 ALS Vial : 33 Sample Multiplier: 1

Instrument :  
 BNA\_F  
 ClientSampled :  
 SB-19-2

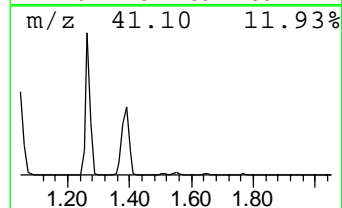
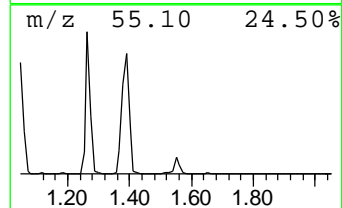
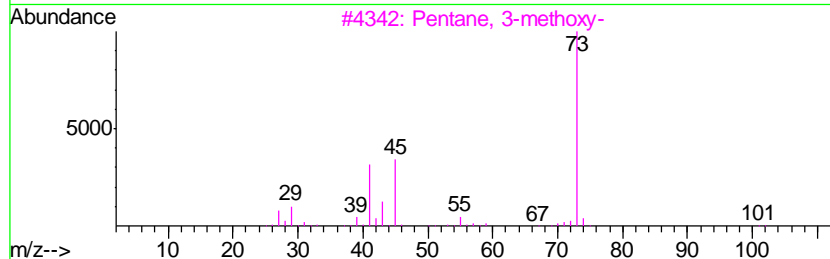
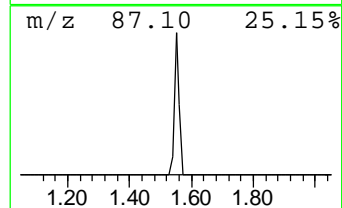
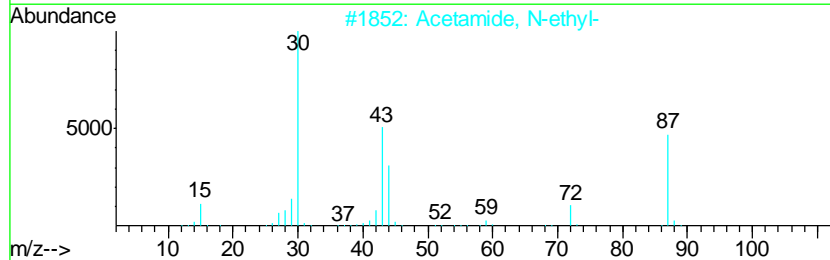
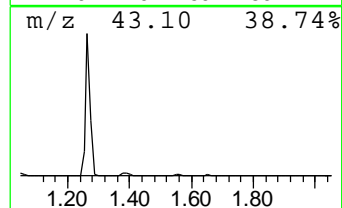
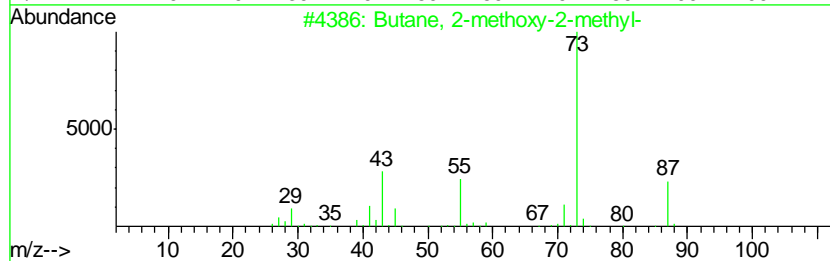
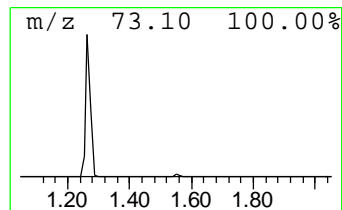
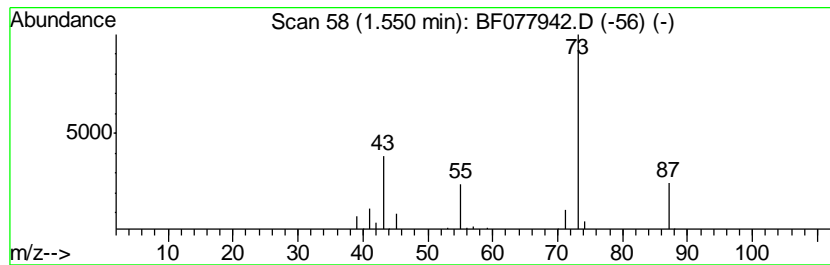
Quant Method : Z:\HPCHEM1\BNA\_F\METHODS\8270-BF031115.M  
 Quant Title : ASP BNA STANDARDS FOR 5 POINT CALIBRATION

TIC Library : C:\DATABASE\NIST02.L  
 TIC Integration Parameters: LSCINT.P

\*\*\*\*\*  
 Peak Number 4 Butane, 2-methoxy-2-methyl- Concentration Rank 8

R.T.	EstConc	Area	Relative to ISTD	R.T.
1.55	5.09 ng	64016	1,4-Dichlorobenzene-d4	7.12

Hit#	of	Tentative ID	MW	MolForm	CAS#	Qual
1	5	Butane, 2-methoxy-2-methyl-	102	C6H14O	000994-05-8	83
2		Acetamide, N-ethyl-	87	C4H9NO	000625-50-3	25
3		Pentane, 3-methoxy-	102	C6H14O	036839-67-5	17
4		1,3-Dioxolane, 2-methyl-	88	C4H8O2	000497-26-7	9
5		N-Ethylformamide	73	C3H7NO	000627-45-2	9



Data Path : Z:\HPCHEM1\BNA\_F\DATA\BF032415\  
 Data File : BF077942.D  
 Acq On : 25 Mar 2015 7:54  
 Operator : TP/IZ  
 Sample : G1615-10  
 Misc :  
 ALS Vial : 33 Sample Multiplier: 1

Instrument :  
 BNA\_F  
 ClientSampled :  
 SB-19-2

Quant Method : Z:\HPCHEM1\BNA\_F\METHODS\8270-BF031115.M  
 Quant Title : ASP BNA STANDARDS FOR 5 POINT CALIBRATION

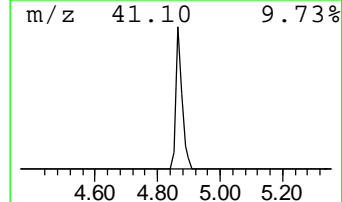
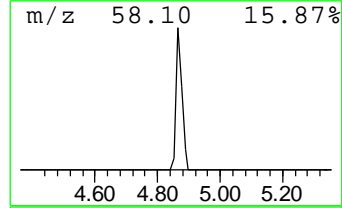
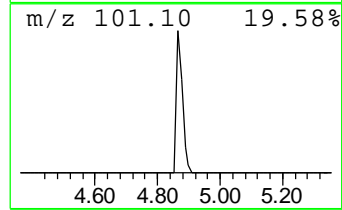
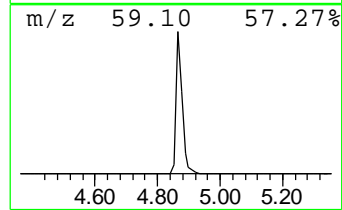
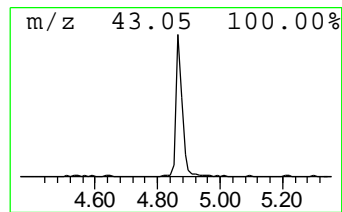
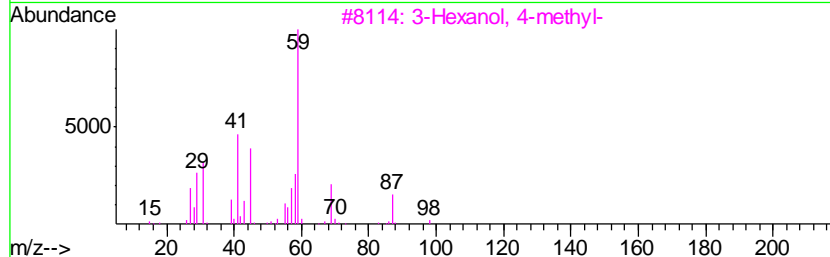
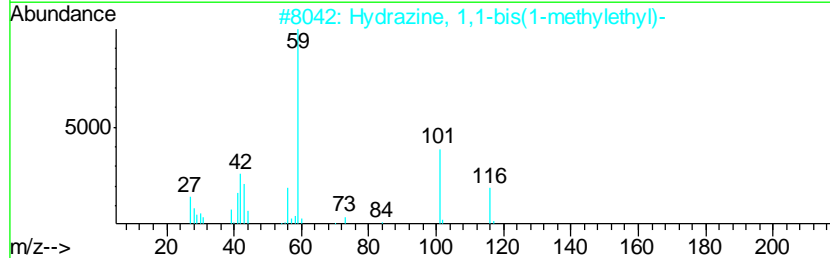
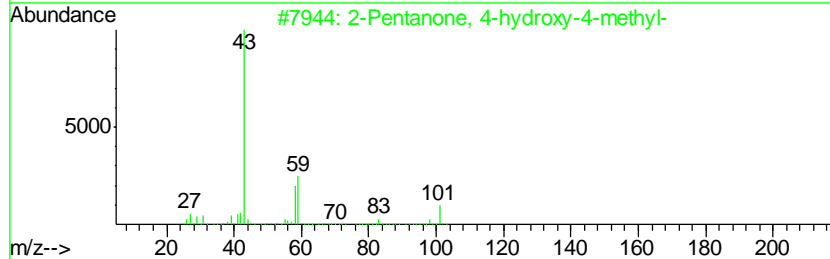
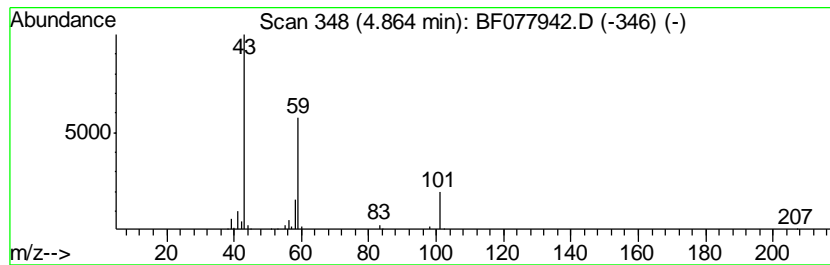
TIC Library : C:\DATABASE\NIST02.L  
 TIC Integration Parameters: LSCINT.P

\*\*\*\*\*  
 Peak Number 6 2-Pentanone, 4-hydroxy-4-me... Concentration Rank 6

R.T.	EstConc	Area	Relative to ISTD	R.T.
4.86	9.98 ng	125666	1,4-Dichlorobenzene-d4	7.12

Hit#	of	Tentative ID	MW	MolForm	CAS#	Qual
1	5	2-Pentanone, 4-hydroxy-4-methyl-	116	C6H12O2	000123-42-2	64
2		Hydrazine, 1,1-bis(1-methylethyl)-	116	C6H16N2	000921-14-2	28
3		3-Hexanol, 4-methyl-	116	C7H16O	000615-29-2	28
4		Acetic acid, cyano-, 1,1-dimethy...	141	C7H11NO2	001116-98-9	25
5		2,3-Butanedione, monooxime	101	C4H7NO2	000057-71-6	9



Data Path : Z:\HPCHEM1\BNA\_F\DATA\BF032415\  
 Data File : BF077942.D  
 Acq On : 25 Mar 2015 7:54  
 Operator : TP/IZ  
 Sample : G1615-10  
 Misc :  
 ALS Vial : 33 Sample Multiplier: 1

Instrument :  
 BNA\_F  
 ClientSampleID :  
 SB-19-2

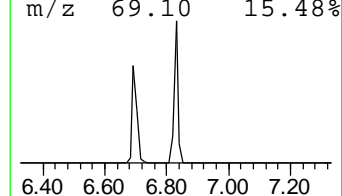
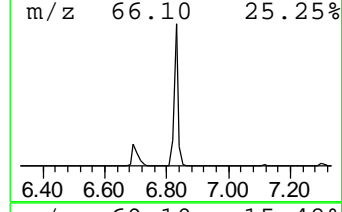
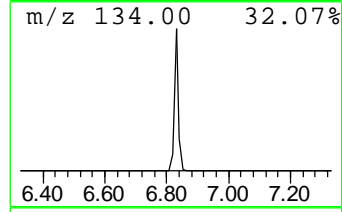
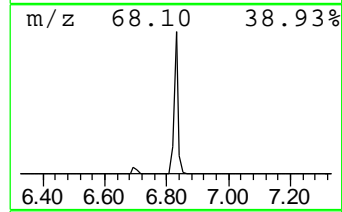
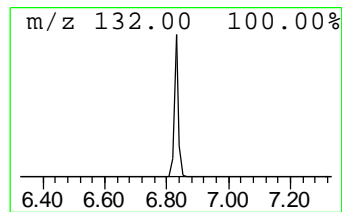
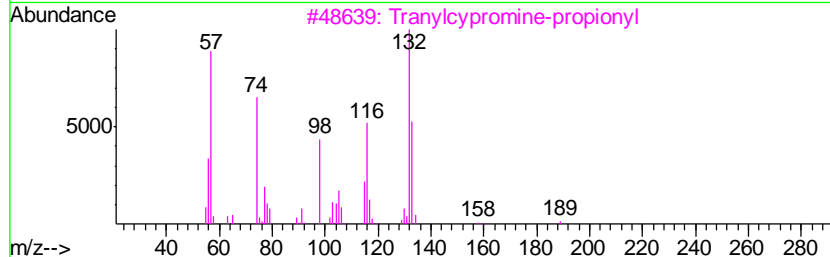
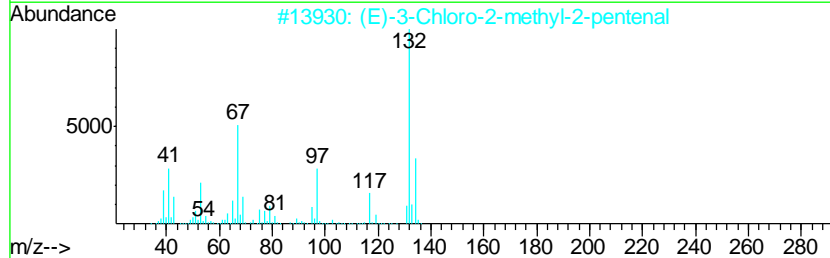
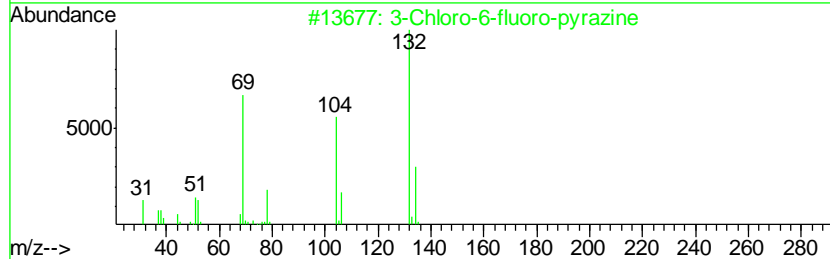
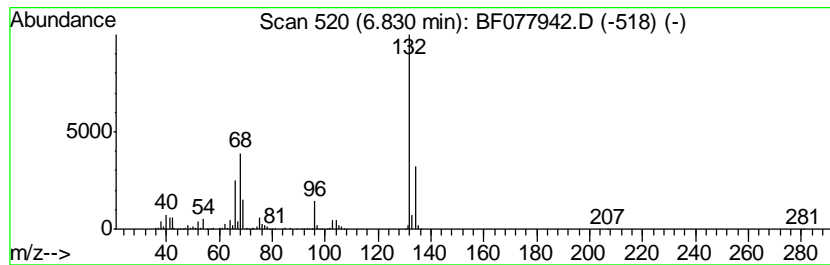
Quant Method : Z:\HPCHEM1\BNA\_F\METHODS\8270-BF031115.M  
 Quant Title : ASP BNA STANDARDS FOR 5 POINT CALIBRATION

TIC Library : C:\DATABASE\NIST02.L  
 TIC Integration Parameters: LSCINT.P

\*\*\*\*\*  
 Peak Number 7 unknown6.83 Concentration Rank 2

R.T.	EstConc	Area	Relative to ISTD	R.T.
6.83	76.50 ng	962900	1,4-Dichlorobenzene-d4	7.12

Hit#	of	Tentative ID	MW	MolForm	CAS#	Qual
1	5	3-Chloro-6-fluoro-pyrazine	132	C4H2ClFN2	1000146-10-7	27
2		(E)-3-Chloro-2-methyl-2-pentenal	132	C6H9ClO	031357-76-3	27
3		Tranylcypromine-propionyl	189	C12H15NO	1000123-86-3	10
4		Bicyclo[4.2.0]octa-1,3,5-triene,...	132	C10H12	028749-81-7	9
5		4-Methylpyrrolo[1,2-a]pyrazine	132	C8H8N2	064608-60-2	9



Data Path : Z:\HPCHEM1\BNA\_F\DATA\BF032415\  
 Data File : BF077942.D  
 Acq On : 25 Mar 2015 7:54  
 Operator : TP/IZ  
 Sample : G1615-10  
 Misc :  
 ALS Vial : 33 Sample Multiplier: 1

Instrument :  
 BNA\_F  
 ClientSampleID :  
 SB-19-2

Quant Method : Z:\HPCHEM1\BNA\_F\METHODS\8270-BF031115.M  
 Quant Title : ASP BNA STANDARDS FOR 5 POINT CALIBRATION

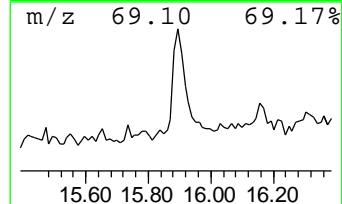
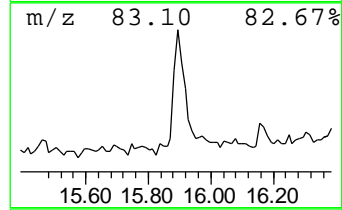
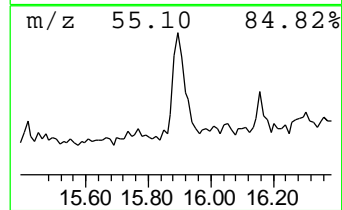
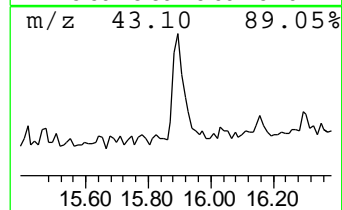
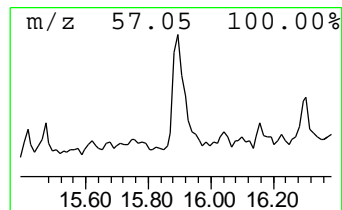
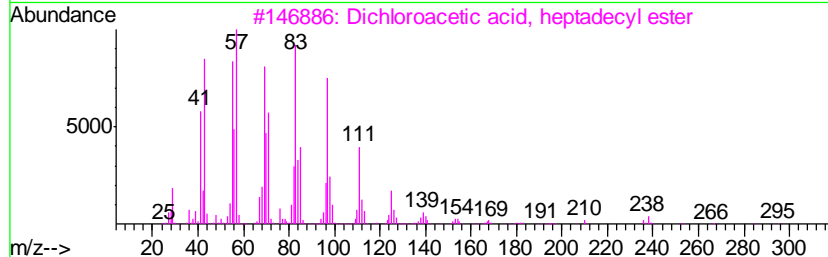
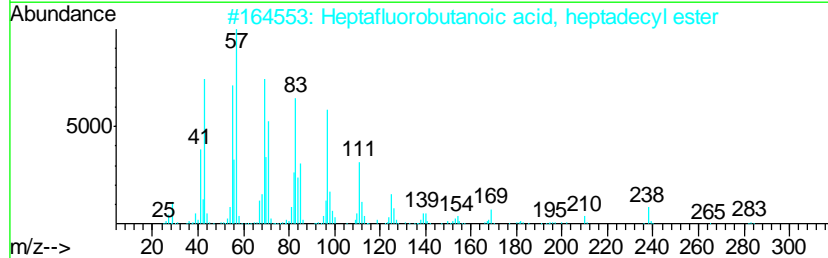
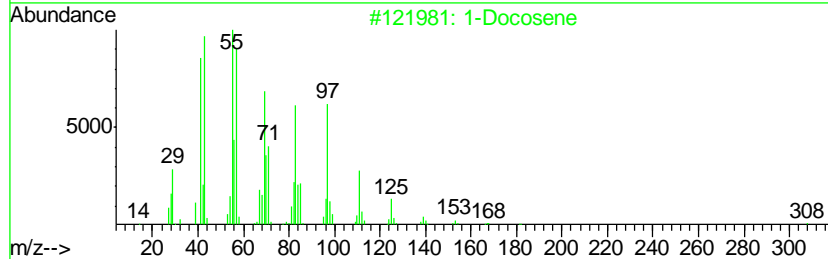
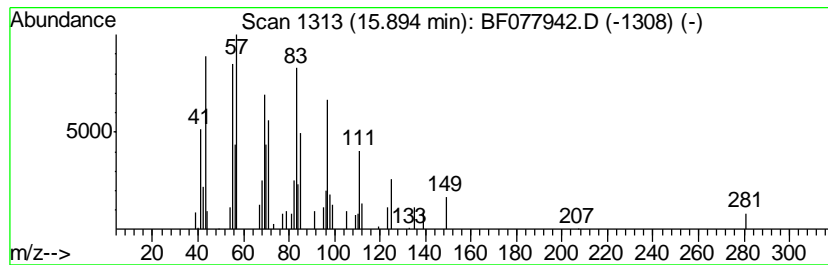
TIC Library : C:\DATABASE\NIST02.L  
 TIC Integration Parameters: LSCINT.P

\*\*\*\*\*  
 Peak Number 9 1-Docosene Concentration Rank 9

R.T.	EstConc	Area	Relative to ISTD	R.T.
15.89	4.28 ng	112826	Chrysene-d12	15.99

Hit#	of	Tentative ID	MW	MolForm	CAS#	Qual
1	5	1-Docosene	308	C22H44	001599-67-3	90
2		Heptafluorobutanoic acid, heptad...	452	C21H35F7O2	1000282-97-3	90
3		Dichloroacetic acid, heptadecyl ...	366	C19H36Cl2O2	1000282-98-2	90
4		Pentafluoropropionic acid, hepta...	402	C20H35F5O2	1000283-04-2	87
5		Trichloroacetic acid, hexadecyl ...	386	C18H33Cl3O2	074339-54-1	87





Data Path : Z:\HPCHEM1\BNA\_F\DATA\BF032415\  
 Data File : BF077942.D  
 Acq On : 25 Mar 2015 7:54  
 Operator : TP/IZ  
 Sample : G1615-10  
 Misc :  
 ALS Vial : 33 Sample Multiplier: 1

Instrument :  
 BNA\_F  
 ClientSampled :  
 SB-19-2

Quant Method : Z:\HPCHEM1\BNA\_F\METHODS\8270-BF031115.M  
 Quant Title : ASP BNA STANDARDS FOR 5 POINT CALIBRATION

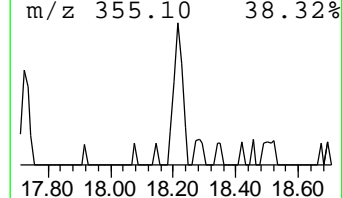
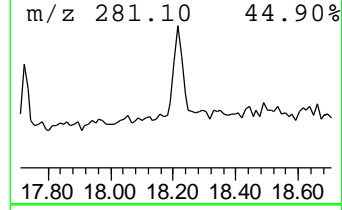
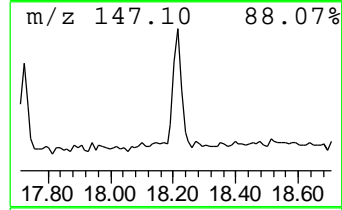
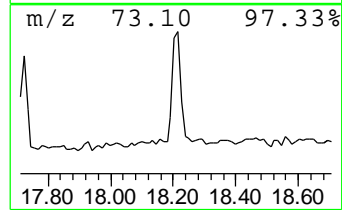
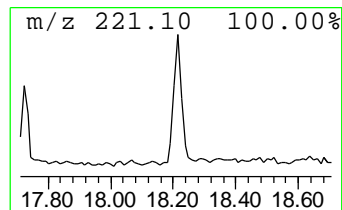
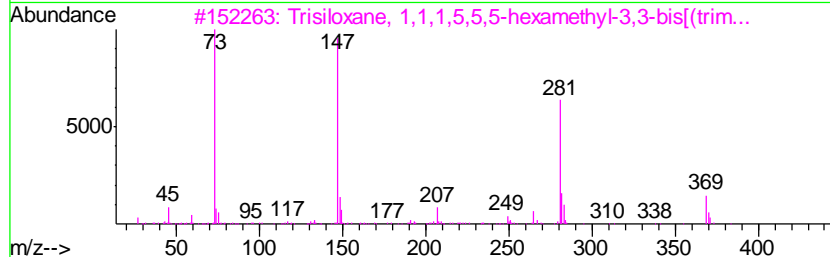
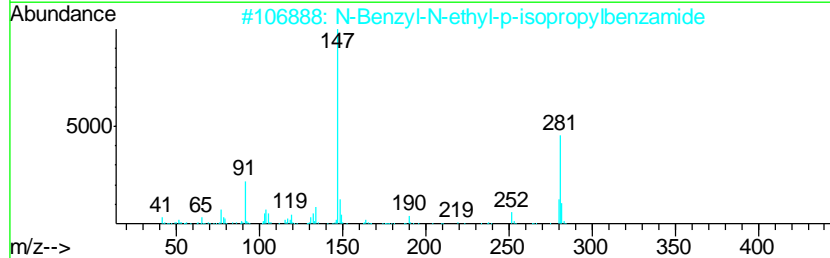
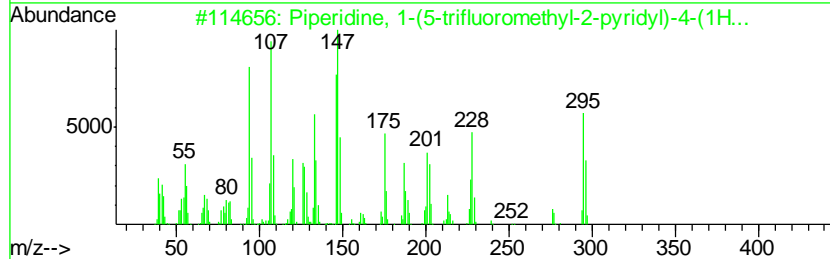
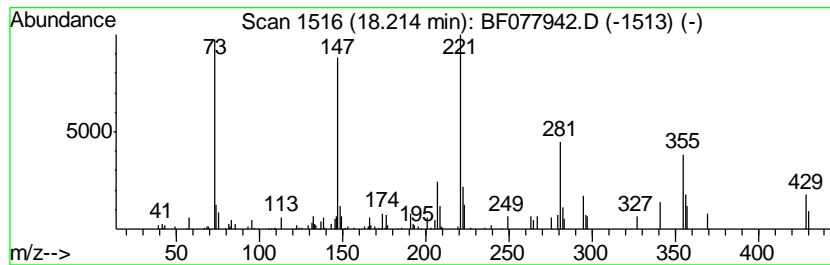
TIC Library : C:\DATABASE\NIST02.L  
 TIC Integration Parameters: LSCINT.P

\*\*\*\*\*  
 Peak Number 10 Piperidine, 1-(5-trifluorom... Concentration Rank 12

R.T.	EstConc	Area	Relative to ISTD	R.T.
18.21	2.67 ng	76453	Perylene-d12	17.78

Hit#	of	Tentative ID	MW	MolForm	CAS#	Qual
1	5	Piperidine, 1-(5-trifluoromethyl...	295	C15H16F3N3	1000268-74-7	56
2		N-Benzyl-N-ethyl-p-isopropylbenz...	281	C19H23NO	015089-22-2	25
3		Trisiloxane, 1,1,1,5,5,5-hexamet...	384	C12H36O4Si5	003555-47-3	22
4		3,4-Bis-(methylthio)-quinoline	221	C11H11NS2	074579-34-3	18
5		Naphtho[2,1-b](4H)-pyran-2-carbo...	316	C20H13FN2O	084186-25-4	14



Data Path : Z:\HPCHEM1\BNA\_F\DATA\BF032415\  
 Data File : BF077942.D  
 Acq On : 25 Mar 2015 7:54  
 Operator : TP/IZ  
 Sample : G1615-10  
 Misc :  
 ALS Vial : 33 Sample Multiplier: 1

Instrument :  
 BNA\_F  
 ClientSampleID :  
 SB-19-2

Quant Method : Z:\HPCHEM1\BNA\_F\METHODS\8270-BF031115.M  
 Quant Title : ASP BNA STANDARDS FOR 5 POINT CALIBRATION

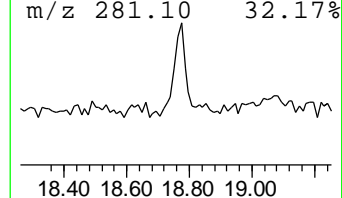
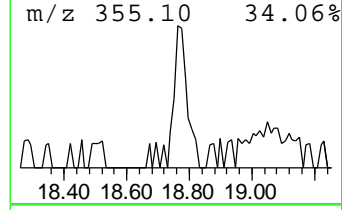
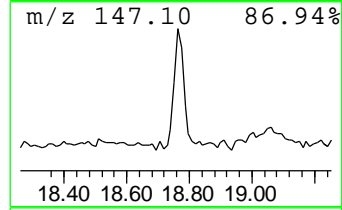
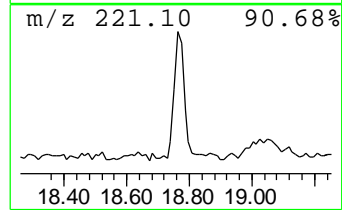
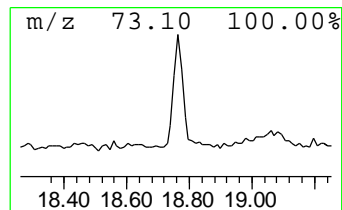
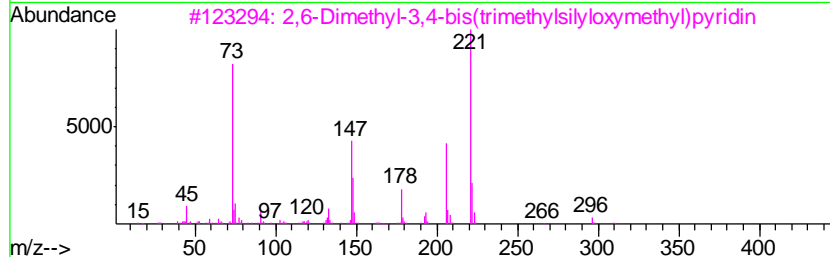
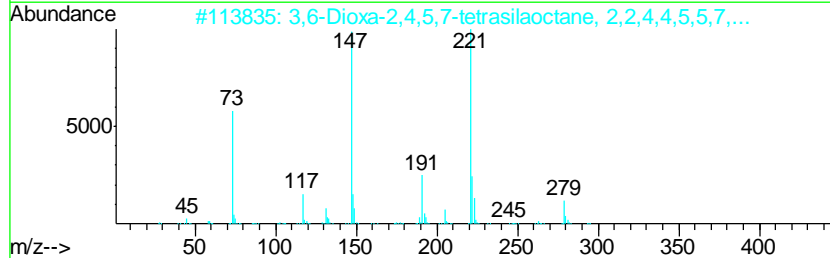
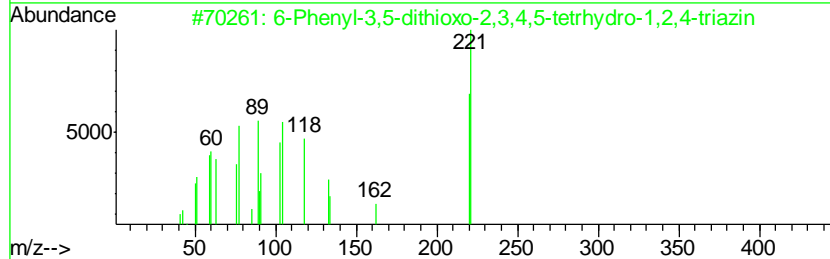
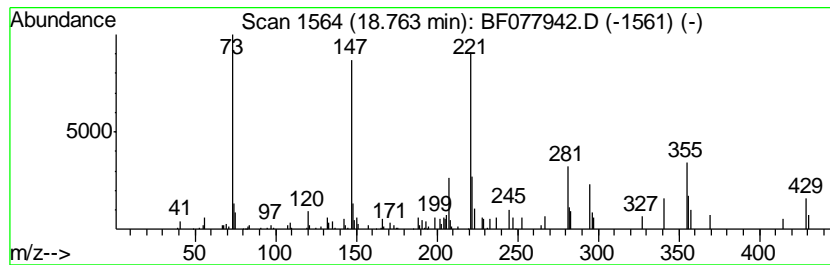
TIC Library : C:\DATABASE\NIST02.L  
 TIC Integration Parameters: LSCINT.P

\*\*\*\*\*  
 Peak Number 11 unknown18.76 Concentration Rank 10

R.T.	EstConc	Area	Relative to ISTD	R.T.
18.76	3.26 ng	93472	Perylene-d12	17.78

Hit#	of	Tentative ID	MW	MolForm	CAS#	Qual
1	5	6-Phenyl-3,5-dithioxo-2,3,4,5-te...	221	C9H7N3S2	038119-57-2	35
2		3,6-Dioxa-2,4,5,7-tetrasilaoctan...	294	C10H30O2Si4	004342-25-0	32
3		2,6-Dimethyl-3,4-bis(trimethylsi...	311	C15H29NO2Si2	1000079-52-1	23
4		N-Benzyl-N-ethyl-p-isopropylbenz...	281	C19H23NO	015089-22-2	22
5		dl-Xylitol, cyclic 2,3-(phenylbo...	238	C11H15BO5	074793-46-7	18



Data Path : Z:\HPCHEM1\BNA\_F\DATA\BF032415\  
 Data File : BF077942.D  
 Acq On : 25 Mar 2015 7:54  
 Operator : TP/IZ  
 Sample : G1615-10  
 Misc :  
 ALS Vial : 33 Sample Multiplier: 1

Instrument :  
 BNA\_F  
 ClientSampleID :  
 SB-19-2

Quant Method : Z:\HPCHEM1\BNA\_F\METHODS\8270-BF031115.M  
 Quant Title : ASP BNA STANDARDS FOR 5 POINT CALIBRATION

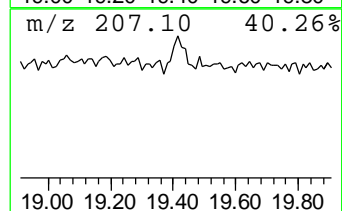
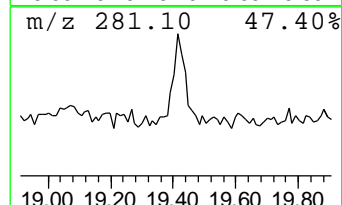
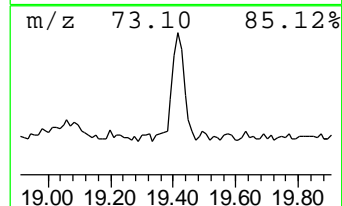
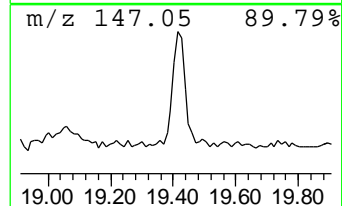
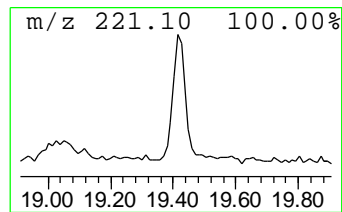
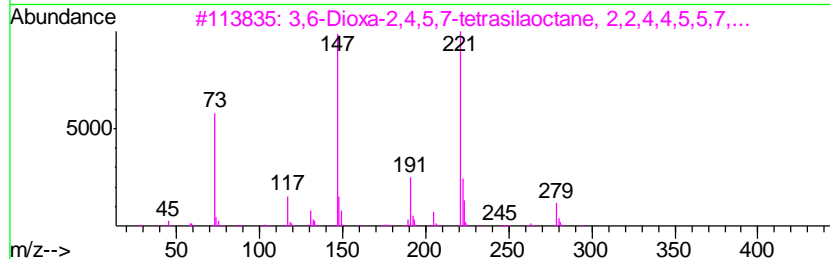
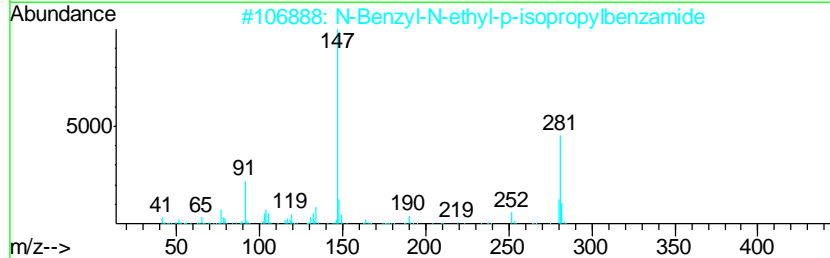
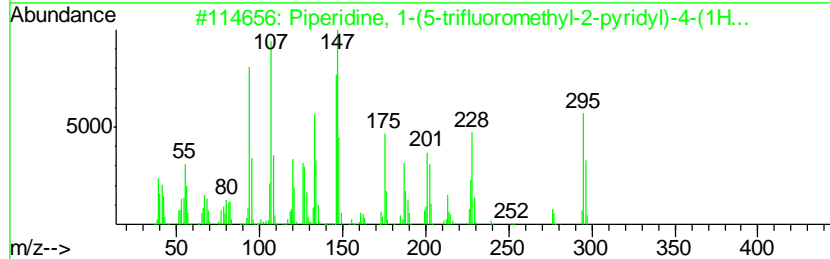
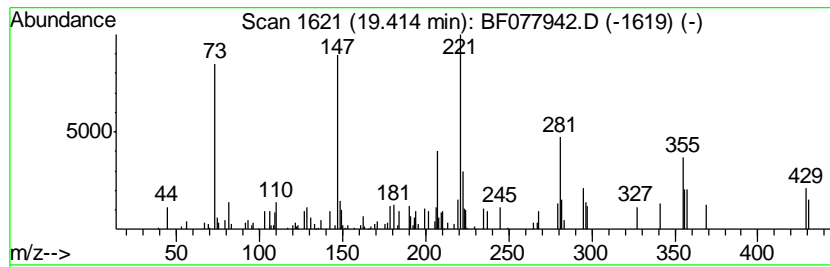
TIC Library : C:\DATABASE\NIST02.L  
 TIC Integration Parameters: LSCINT.P

\*\*\*\*\*  
 Peak Number 12 unknown19.41 Concentration Rank 11

R.T.	EstConc	Area	Relative to ISTD	R.T.
19.41	2.89 ng	82865	Perylene-d12	17.78

Hit#	of	Tentative ID	MW	MolForm	CAS#	Qual
1	5	Piperidine, 1-(5-trifluoromethyl...	295	C15H16F3N3	1000268-74-7	64
2		N-Benzyl-N-ethyl-p-isopropylbenz...	281	C19H23NO	015089-22-2	25
3		3,6-Dioxa-2,4,5,7-tetrasilaoctan...	294	C10H30O2Si4	004342-25-0	16
4		Dithioerythritol, O,O',S,S'-tetr...	442	C16H42O2S2Si4	1000079-30-7	16
5		(E)-2-Hydroxy-4'-cyano-stilbene	221	C15H11NO	1000147-85-5	14



Data Path : Z:\HPCHEM1\BNA\_F\DATA\BF032415\  
 Data File : BF077942.D  
 Acq On : 25 Mar 2015 7:54  
 Operator : TP/IZ  
 Sample : G1615-10  
 Misc :  
 ALS Vial : 33 Sample Multiplier: 1

Instrument :  
 BNA\_F  
 ClientSampleId :  
 SB-19-2

Quant Method : Z:\HPCHEM1\BNA\_F\METHODS\8270-BF031115.M  
 Quant Title : ASP BNA STANDARDS FOR 5 POINT CALIBRATION

TIC Library : C:\DATABASE\NIST02.L  
 TIC Integration Parameters: LSCINT.P

TIC Top Hit name	RT	EstConc	Units	Response	--Internal Standard--			
					#	RT	Resp	Conc
Cyclopentane, met...	1.05	63.0	ng	793154	1	7.12	251744	20.0
Propane, 2,2-dime...	1.26	265.4	ng	3340430	1	7.12	251744	20.0
Butane, 2-methoxy...	1.55	5.1	ng	64016	1	7.12	251744	20.0
2-Pentanone, 4-hy...	4.86	10.0	ng	125666	1	7.12	251744	20.0
unknown6.83	6.83	76.5	ng	962900	1	7.12	251744	20.0
1-Docosene	15.89	4.3	ng	112826	5	15.99	527553	20.0
Piperidine, 1-(5-...	18.21	2.7	ng	76453	6	17.78	572633	20.0
unknown18.76	18.76	3.3	ng	93472	6	17.78	572633	20.0
unknown19.41	19.41	2.9	ng	82865	6	17.78	572633	20.0