

Data Path : Z:\HPCHEM1\BNA F\DATA\BF032516\
 Data File : BF085788.D
 Acq On : 26 Mar 2016 3:53
 Operator : UM/SJ
 Sample : H1923-04
 Misc :
 ALS Vial : 38 Sample Multiplier: 1

Instrument :
 BNA_F
 ClientSampleId :
 S-PG-D(0-6)

Integration Parameters: rteint.p
 Integrator: RTE
 Smoothing : ON
 Sampling : 1
 Start Thrs: 0.2
 Stop Thrs : 0

Filtering: 5
 Min Area: 3 % of largest Peak
 Max Peaks: 100
 Peak Location: TOP

If leading or trailing edge < 100 prefer < Baseline drop else tangent >
 Peak separation: 5

Method : Z:\HPCHEM1\BNA F\METHODS\8270-BF032416.M
 Title : ASP BNA STANDARDS FOR 5 POINT CALIBRATION

Signal : TIC

peak #	R.T. min	first scan	max scan	last scan	PK TY	peak height	corr. area	corr. % max.	% of total
1	4.996	234	237	248	rBV	551632	837796	34.39%	3.164%
2	5.430	272	275	277	rBV	2044464	2377853	97.61%	8.980%
3	5.830	308	310	312	rBV	64174	73919	3.03%	0.279%
4	6.470	363	366	368	rBV	1649659	2335054	95.85%	8.819%
5	6.596	374	377	379	rBV	2488084	2436064	100.00%	9.200%
6	6.825	395	397	399	rBV	754315	645595	26.50%	2.438%
7	6.985	408	411	413	rBV	1686309	1968605	80.81%	7.435%
8	7.385	444	446	449	rBV	1079570	1486365	61.02%	5.614%
9	7.499	452	456	460	rVB	29872	51464	2.11%	0.194%
10	8.105	507	509	512	rBV	718181	749708	30.78%	2.831%
11	8.402	532	535	539	rBV2	18264	27052	1.11%	0.102%
12	9.190	601	604	606	rBV	1777970	2198499	90.25%	8.303%
13	9.579	636	638	642	rVB	372154	310633	12.75%	1.173%
14	9.796	655	657	659	rVB	71305	55373	2.27%	0.209%
15	9.865	661	663	665	rBV	683222	670234	27.51%	2.531%
16	10.299	697	701	702	rBV2	62918	108182	4.44%	0.409%
17	10.516	717	720	721	rBV	30335	44698	1.83%	0.169%
18	10.653	729	732	734	rBV	1002354	1133078	46.51%	4.279%
19	10.768	740	742	748	rBV	90318	110430	4.53%	0.417%
20	10.962	756	759	761	rBV2	12725	27270	1.12%	0.103%
21	11.019	761	764	766	rVB3	18296	29086	1.19%	0.110%
22	11.214	779	781	782	rBV	63264	54460	2.24%	0.206%
23	11.339	790	792	796	rBV2	517590	655499	26.91%	2.476%
24	11.419	796	799	801	rVB2	28286	47474	1.95%	0.179%
25	11.579	810	813	817	rBV3	26128	42905	1.76%	0.162%
26	11.636	817	818	821	rBV	27179	28289	1.16%	0.107%
27	11.876	837	839	844	rBV	180775	202228	8.30%	0.764%
28	11.956	844	846	850	rVB2	31500	50957	2.09%	0.192%
29	12.174	863	865	870	rVB2	16113	30270	1.24%	0.114%
30	12.299	872	876	877	rBV3	18663	29480	1.21%	0.111%
31	12.391	882	884	886	rVV	20731	24941	1.02%	0.094%
32	12.437	886	888	890	rVB	16663	26697	1.10%	0.101%
33	12.551	896	898	900	rBV	194311	204707	8.40%	0.773%
34	12.597	900	902	905	rVV3	20387	47204	1.94%	0.178%

Data Path : Z:\HPCHEM1\BNA F\DATA\BF032516\
 Data File : BF085788.D
 Acq On : 26 Mar 2016 3:53
 Operator : UM/SJ
 Sample : H1923-04
 Misc :
 ALS Vial : 38 Sample Multiplier: 1

Instrument :
 BNA_F
 ClientSampleId :
 S-PG-D(0-6)

Integration Parameters: rteint.p
 Integrator: RTE
 Smoothing : ON Filtering: 5
 Sampling : 1 Min Area: 3 % of largest Peak
 Start Thrs: 0.2 Max Peaks: 100
 Stop Thrs : 0 Peak Location: TOP

If leading or trailing edge < 100 prefer < Baseline drop else tangent >
 Peak separation: 5

Method : Z:\HPCHEM1\BNA F\METHODS\8270-BF032416.M
 Title : ASP BNA STANDARDS FOR 5 POINT CALIBRATION

35	12.654	905	907	909	rVV2	77753	99907	4.10%	0.377%
36	12.745	913	915	917	rVV	80822	132165	5.43%	0.499%
37	12.779	917	918	921	rVV	193575	195169	8.01%	0.737%
38	12.825	921	922	926	rVV2	26292	32013	1.31%	0.121%
39	12.928	928	931	933	rVV	1800599	1654298	67.91%	6.248%
40	12.997	935	937	939	rBV2	17359	34687	1.42%	0.131%
41	13.111	943	947	949	rVV	28132	52581	2.16%	0.199%
42	13.157	949	951	954	rVV2	55261	72032	2.96%	0.272%
43	13.214	954	956	960	rVB2	22079	31993	1.31%	0.121%
44	13.454	975	977	979	rVB	69861	53231	2.19%	0.201%
45	13.499	979	981	982	rBV	64823	65952	2.71%	0.249%
46	13.614	990	991	994	rVB	25727	31691	1.30%	0.120%
47	13.728	998	1001	1002	rBV2	30731	43290	1.78%	0.163%
48	13.774	1002	1005	1007	rVV3	60827	100499	4.13%	0.380%
49	13.831	1007	1010	1014	rVV	182963	302555	12.42%	1.143%
50	13.980	1019	1023	1024	rBV2	744138	1364710	56.02%	5.154%
51	14.082	1029	1032	1033	rBV2	30132	42477	1.74%	0.160%
52	14.140	1035	1037	1042	rVB2	85512	115742	4.75%	0.437%
53	14.368	1055	1057	1059	rBV	16941	25333	1.04%	0.096%
54	14.448	1061	1064	1071	rBV2	132467	267725	10.99%	1.011%
55	14.745	1087	1090	1093	rBV	62821	97955	4.02%	0.370%
56	14.882	1099	1102	1103	rVB	52841	64205	2.64%	0.242%
57	14.997	1109	1112	1115	rBV	94755	181509	7.45%	0.686%
58	15.065	1115	1118	1119	rVV	163251	204698	8.40%	0.773%
59	15.100	1119	1121	1126	rVB2	51776	114206	4.69%	0.431%
60	15.283	1135	1137	1140	rVB	57470	72030	2.96%	0.272%
61	15.340	1140	1142	1144	rBV	69570	86218	3.54%	0.326%
62	15.397	1144	1147	1153	rBV	395935	554731	22.77%	2.095%
63	15.603	1163	1165	1168	rBV2	57821	112185	4.61%	0.424%
64	15.831	1182	1185	1187	rBV	125082	217613	8.93%	0.822%
65	15.888	1187	1190	1193	rVV4	35913	92304	3.79%	0.349%
66	16.300	1223	1226	1231	rBV3	29646	73605	3.02%	0.278%
67	16.574	1247	1250	1253	rBV3	34240	61199	2.51%	0.231%
68	16.780	1266	1268	1271	rBV2	32397	66249	2.72%	0.250%
69	16.848	1272	1274	1279	rVB	43440	86256	3.54%	0.326%
70	17.203	1302	1305	1309	rVB	27906	60053	2.47%	0.227%
71	17.328	1312	1316	1322	rVV8	28305	95705	3.93%	0.361%

Data Path : Z:\HPCHEM1\BNA F\DATA\BF032516\
Data File : BF085788.D
Acq On : 26 Mar 2016 3:53
Operator : UM/SJ
Sample : H1923-04
Misc :
ALS Vial : 38 Sample Multiplier: 1

Instrument :
BNA_F
ClientSampleId :
S-PG-D(0-6)

Integration Parameters: rteint.p
Integrator: RTE
Smoothing : ON Filtering: 5
Sampling : 1 Min Area: 3 % of largest Peak
Start Thrs: 0.2 Max Peaks: 100
Stop Thrs : 0 Peak Location: TOP

If leading or trailing edge < 100 prefer < Baseline drop else tangent >
Peak separation: 5

Method : Z:\HPCHEM1\BNA F\METHODS\8270-BF032416.M
Title : ASP BNA STANDARDS FOR 5 POINT CALIBRATION

72	17.614	1339	1341	1344	rVB3	25011	36424	1.50%	0.138%
73	17.751	1350	1353	1358	rVB6	24920	67306	2.76%	0.254%
74	18.003	1371	1375	1379	rBV6	20122	62550	2.57%	0.236%
75	18.083	1379	1382	1384	rBV4	19407	52036	2.14%	0.197%
76	18.277	1396	1399	1406	rVB7	34493	116714	4.79%	0.441%
77	18.494	1416	1418	1419	rBV2	20639	25480	1.05%	0.096%
78	19.340	1490	1492	1494	rBV2	21228	36882	1.51%	0.139%

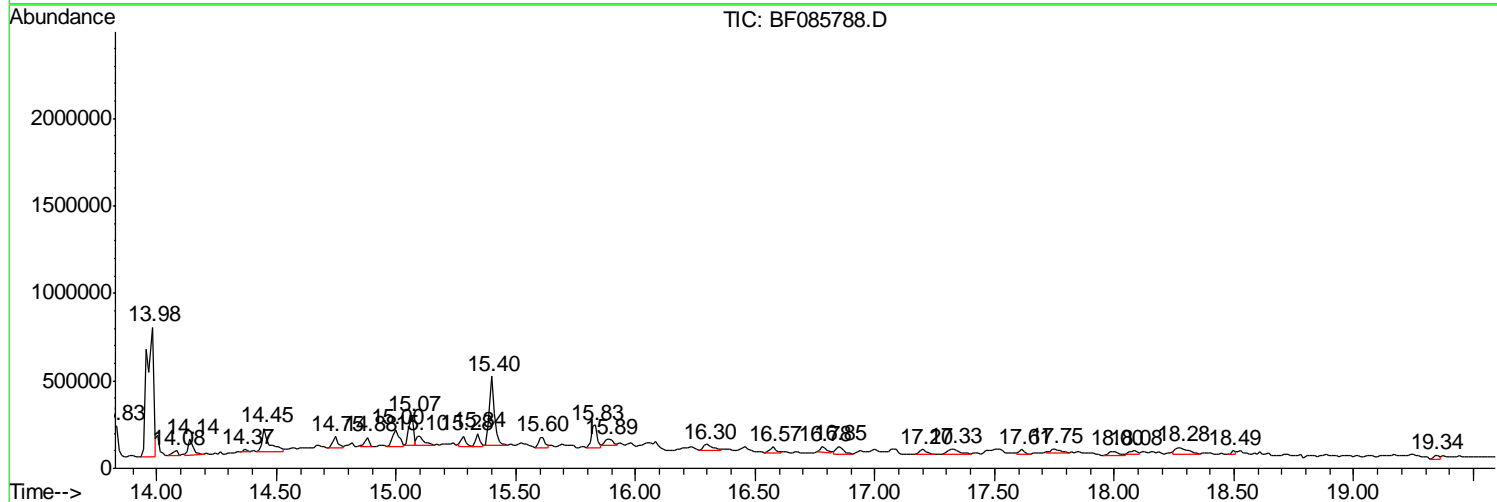
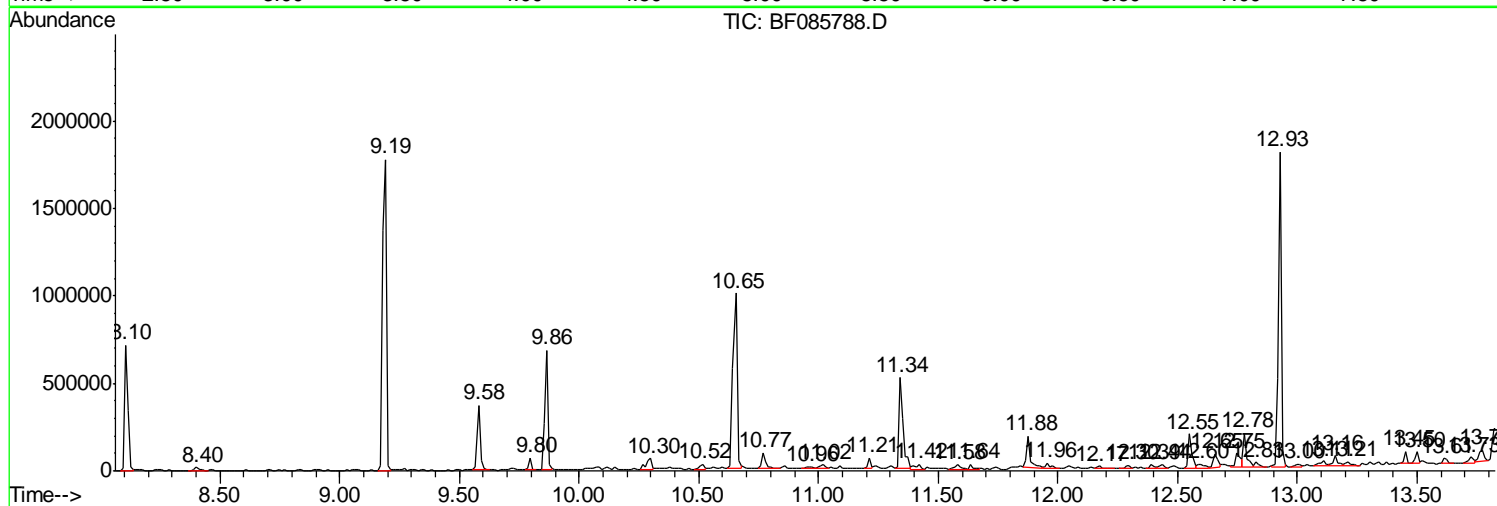
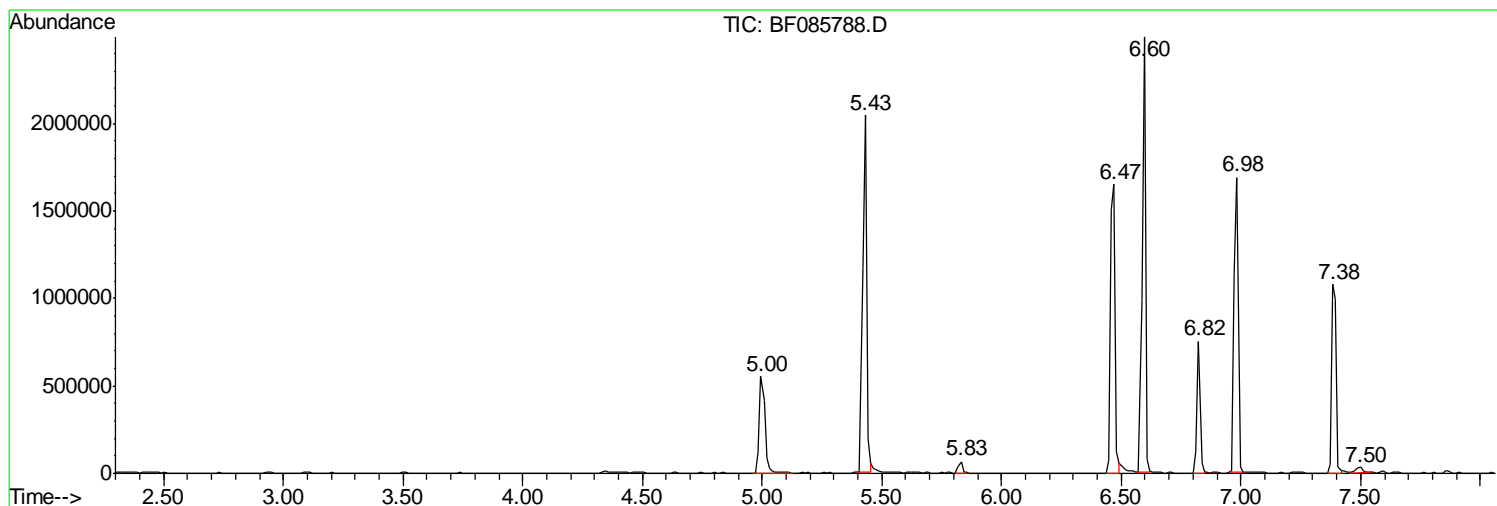
Sum of corrected areas: 26478232

Data Path : Z:\HPCHEM1\BNA F\DATA\BF032516\
 Data File : BF085788.D
 Acq On : 26 Mar 2016 3:53
 Operator : UM/SJ
 Sample : H1923-04
 Misc :
 ALS Vial : 38 Sample Multiplier: 1

Instrument :
 BNA_F
 Client Sampled :
 S-PG-D(0-6)

Quant Method : Z:\HPCHEM1\BNA F\METHODS\8270-BF032416.M
 Quant Title : ASP BNA STANDARDS FOR 5 POINT CALIBRATION

TIC Library : C:\DATABASE\NIST02.L
 TIC Integration Parameters: LSCINT.P



Data Path : Z:\HPCHEM1\BNA F\DATA\BF032516\
 Data File : BF085788.D
 Acq On : 26 Mar 2016 3:53
 Operator : UM/SJ
 Sample : H1923-04
 Misc :
 ALS Vial : 38 Sample Multiplier: 1

Instrument :
 BNA_F
 ClientSampleID :
 S-PG-D(0-6)

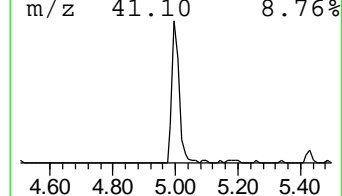
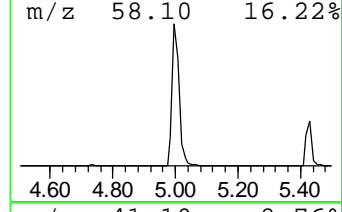
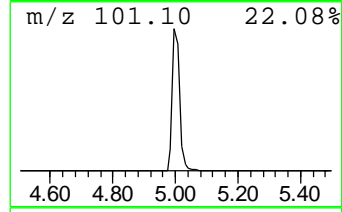
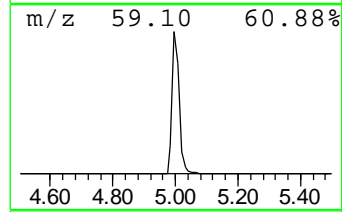
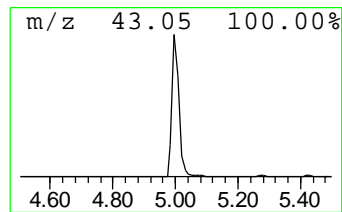
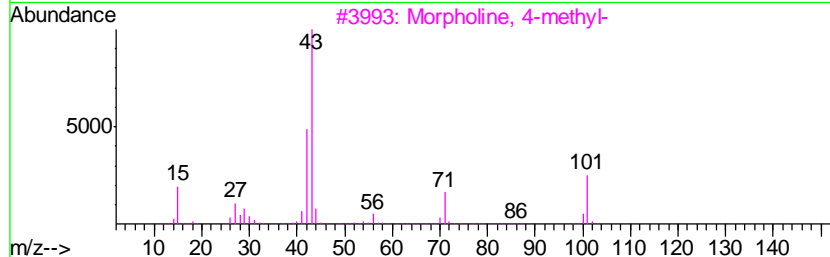
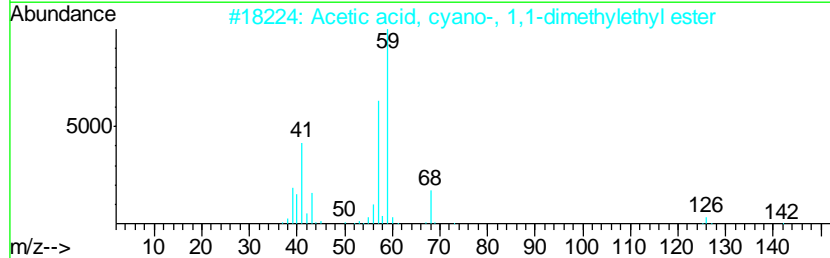
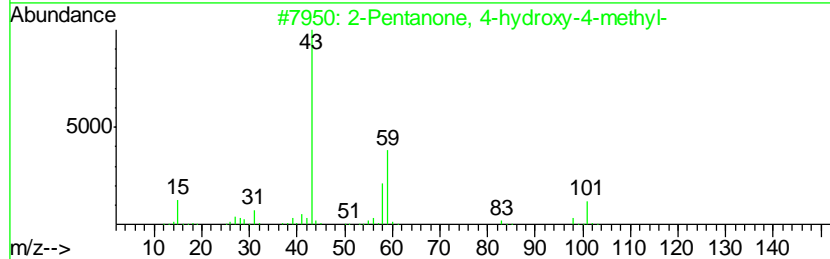
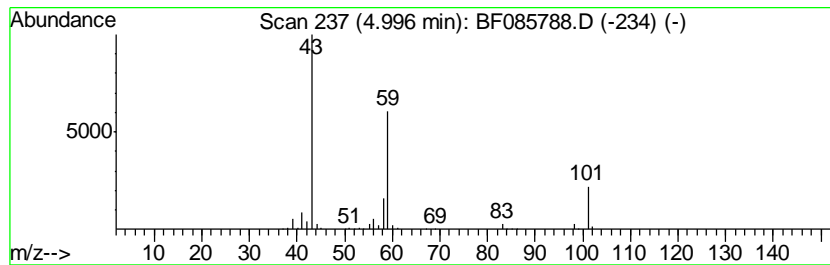
Quant Method : Z:\HPCHEM1\BNA F\METHODS\8270-BF032416.M
 Quant Title : ASP BNA STANDARDS FOR 5 POINT CALIBRATION

TIC Library : C:\DATABASE\NIST02.L
 TIC Integration Parameters: LSCINT.P

 Peak Number 1 2-Pentanone, 4-hydroxy-4-me... Concentration Rank 3

R.T.	EstConc	Area	Relative to ISTD	R.T.
5.00	25.95 ng	837796	1,4-Dichlorobenzene-d4	6.82

Hit#	of	Tentative ID	MW	MolForm	CAS#	Qual
1	5	2-Pentanone, 4-hydroxy-4-methyl-	116	C6H12O2	000123-42-2	56
2		Acetic acid, cyano-, 1,1-dimethyl...	141	C7H11NO2	001116-98-9	23
3		Morpholine, 4-methyl-	101	C5H11NO	000109-02-4	9
4		5-Hexen-2-one	98	C6H10O	000109-49-9	9
5		2,3-Butanedione, monooxime	101	C4H7NO2	000057-71-6	9



Data Path : Z:\HPCHEM1\BNA F\DATA\BF032516\
 Data File : BF085788.D
 Acq On : 26 Mar 2016 3:53
 Operator : UM/SJ
 Sample : H1923-04
 Misc :
 ALS Vial : 38 Sample Multiplier: 1

Instrument :
 BNA_F
 ClientSampleID :
 S-PG-D(0-6)

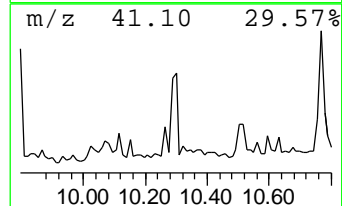
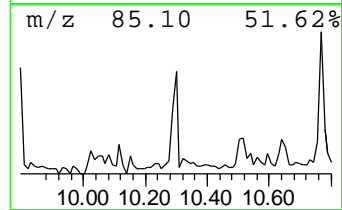
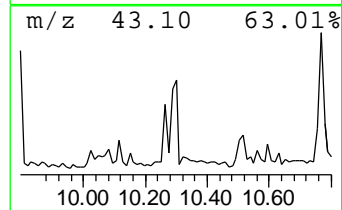
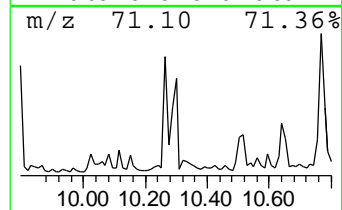
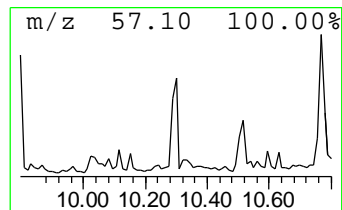
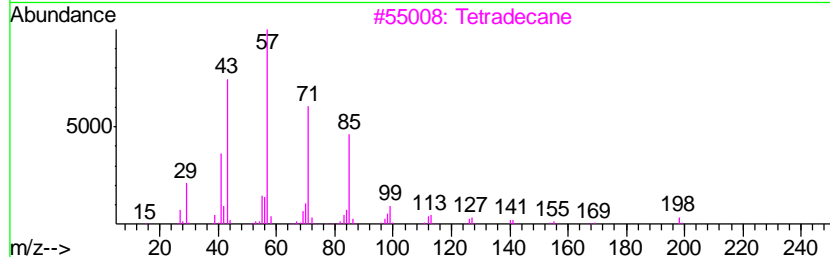
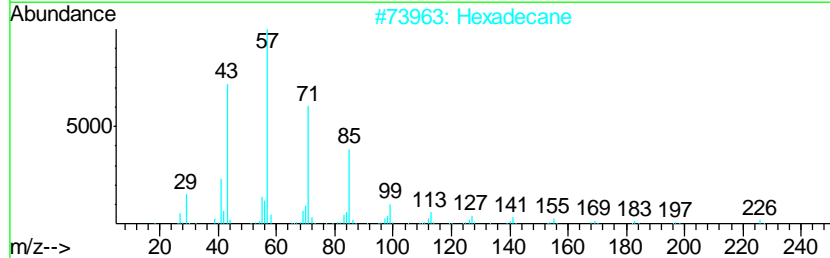
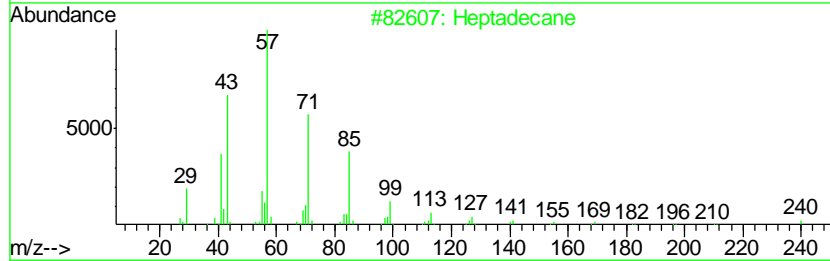
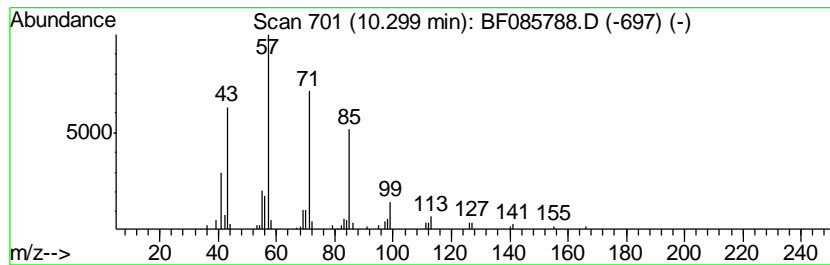
Quant Method : Z:\HPCHEM1\BNA F\METHODS\8270-BF032416.M
 Quant Title : ASP BNA STANDARDS FOR 5 POINT CALIBRATION

TIC Library : C:\DATABASE\NIST02.L
 TIC Integration Parameters: LSCINT.P

 Peak Number 4 Heptadecane Concentration Rank 16

R.T.	EstConc	Area	Relative to ISTD	R.T.
10.30	3.23 ng	108182	Acenaphthene-d10	9.86

Hit#	of	Tentative ID	MW	MolForm	CAS#	Qual
1	5	Heptadecane	240	C17H36	000629-78-7	91
2		Hexadecane	226	C16H34	000544-76-3	90
3		Tetradecane	198	C14H30	000629-59-4	86
4		Heptadecane, 2,6,10,15-tetramethyl-	296	C21H44	054833-48-6	72
5		Eicosane	282	C20H42	000112-95-8	64



Data Path : Z:\HPCHEM1\BNA F\DATA\BF032516\
 Data File : BF085788.D
 Acq On : 26 Mar 2016 3:53
 Operator : UM/SJ
 Sample : H1923-04
 Misc :
 ALS Vial : 38 Sample Multiplier: 1

Instrument :
 BNA_F
 ClientSampleID :
 S-PG-D(0-6)

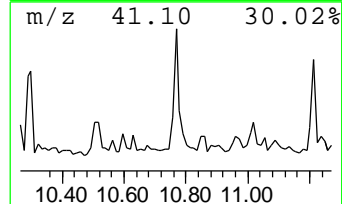
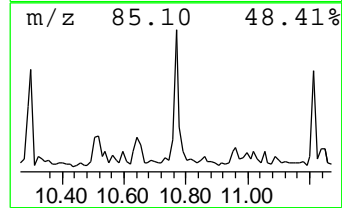
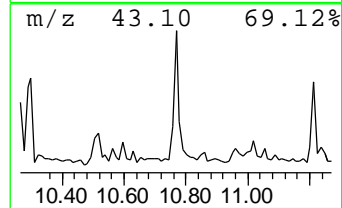
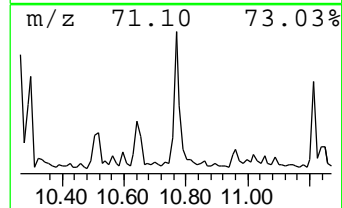
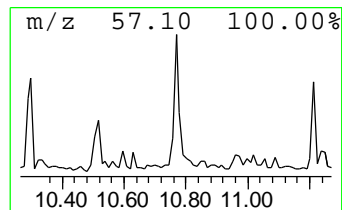
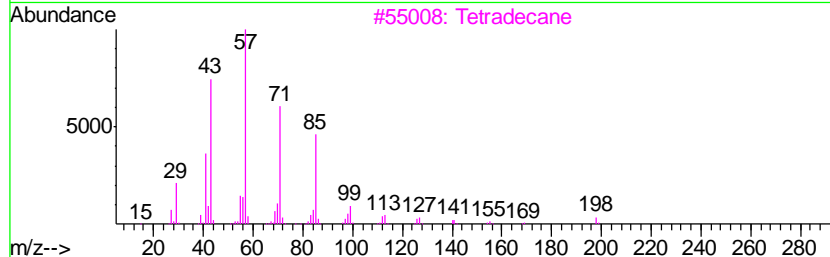
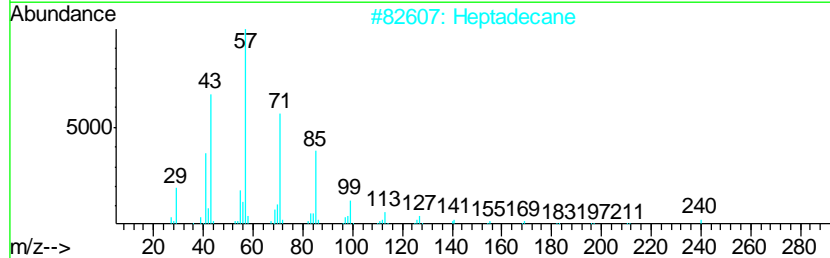
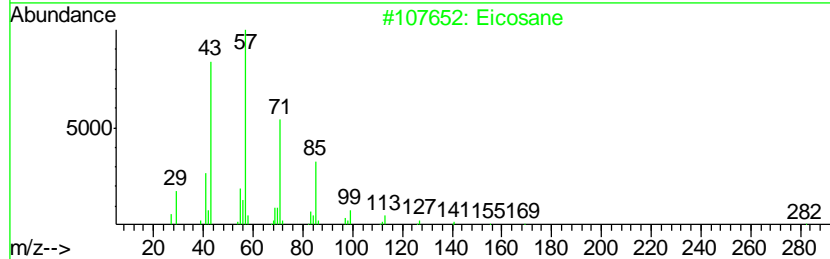
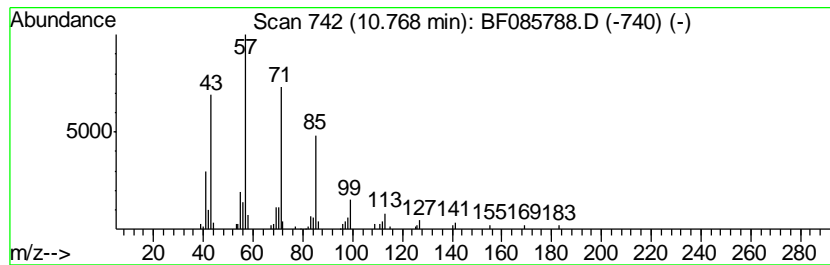
Quant Method : Z:\HPCHEM1\BNA F\METHODS\8270-BF032416.M
 Quant Title : ASP BNA STANDARDS FOR 5 POINT CALIBRATION

TIC Library : C:\DATABASE\NIST02.L
 TIC Integration Parameters: LSCINT.P

 Peak Number 5 Eicosane Concentration Rank 14

R.T.	EstConc	Area	Relative to ISTD	R.T.
10.77	3.37 ng	110430	Phenanthrene-d10	11.34

Hit#	of	Tentative ID	MW	MolForm	CAS#	Qual
1	5	Eicosane	282	C20H42	000112-95-8	91
2		Heptadecane	240	C17H36	000629-78-7	91
3		Tetradecane	198	C14H30	000629-59-4	91
4		Hexadecane	226	C16H34	000544-76-3	91
5		Octadecane	254	C18H38	000593-45-3	91



Data Path : Z:\HPCHEM1\BNA F\DATA\BF032516\
 Data File : BF085788.D
 Acq On : 26 Mar 2016 3:53
 Operator : UM/SJ
 Sample : H1923-04
 Misc :
 ALS Vial : 38 Sample Multiplier: 1

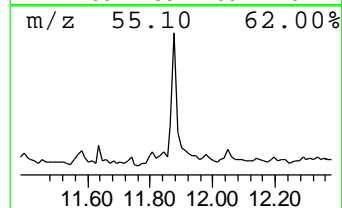
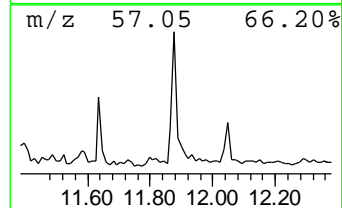
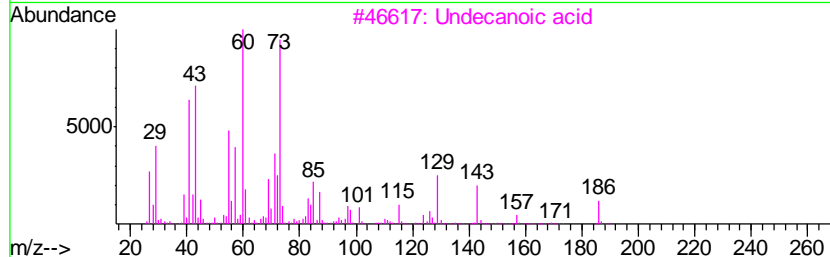
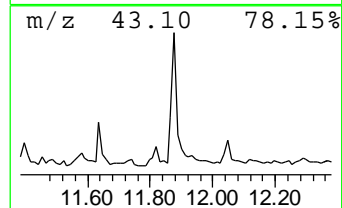
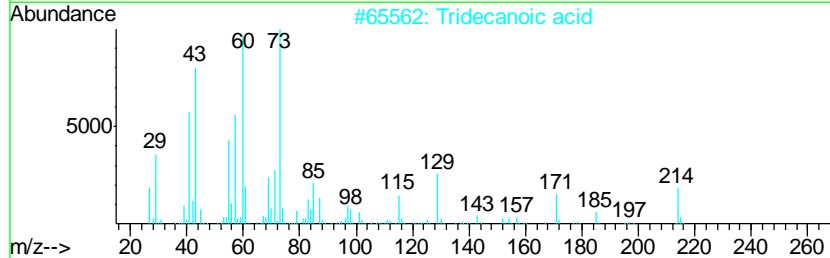
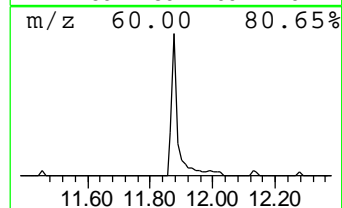
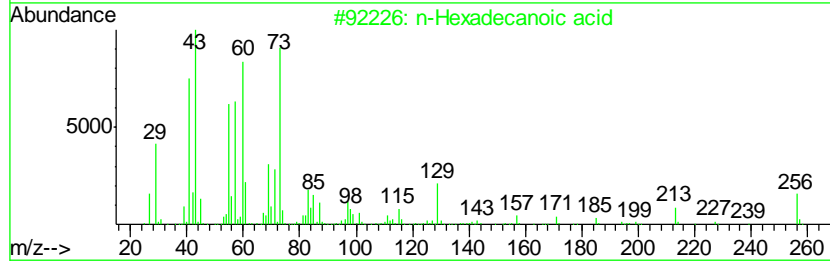
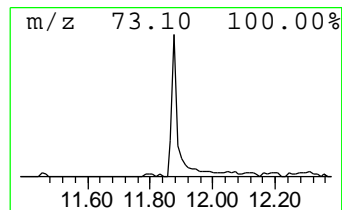
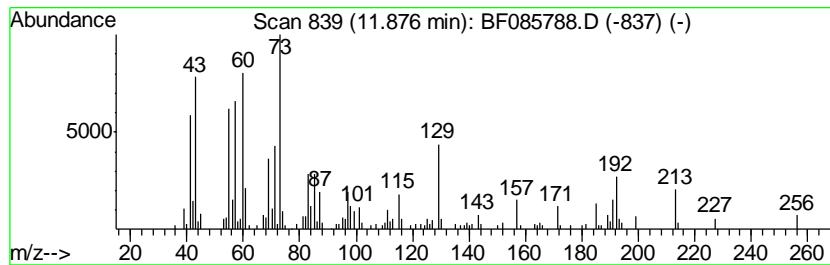
Instrument :
 BNA_F
 ClientSampleID :
 S-PG-D(0-6)

Quant Method : Z:\HPCHEM1\BNA F\METHODS\8270-BF032416.M
 Quant Title : ASP BNA STANDARDS FOR 5 POINT CALIBRATION

TIC Library : C:\DATABASE\NIST02.L
 TIC Integration Parameters: LSCINT.P

 Peak Number 6 n-Hexadecanoic acid Concentration Rank 6

R.T.	EstConc	Area	Relative to ISTD	R.T.		
11.88	6.17 ng	202228	Phenanthrene-d10	11.34		
Hit# of	5	Tentative ID	MW	MolForm	CAS#	Qual
1		n-Hexadecanoic acid	256	C16H32O2	000057-10-3	87
2		Tridecanoic acid	214	C13H26O2	000638-53-9	76
3		Undecanoic acid	186	C11H22O2	000112-37-8	72
4		n-Decanoic acid	172	C10H20O2	000334-48-5	70
5		Pentadecanoic acid	242	C15H30O2	001002-84-2	64



Data Path : Z:\HPCHEM1\BNA F\DATA\BF032516\
 Data File : BF085788.D
 Acq On : 26 Mar 2016 3:53
 Operator : UM/SJ
 Sample : H1923-04
 Misc :
 ALS Vial : 38 Sample Multiplier: 1

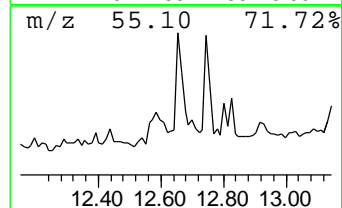
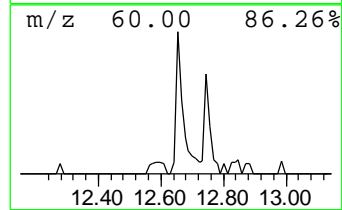
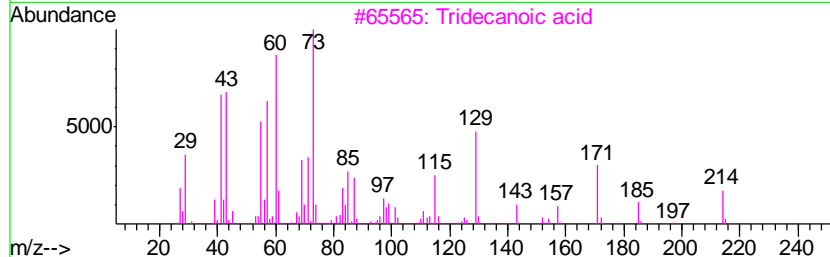
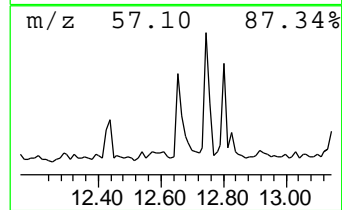
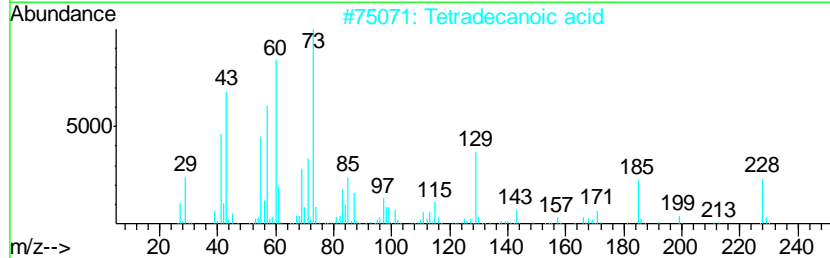
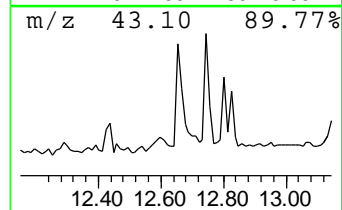
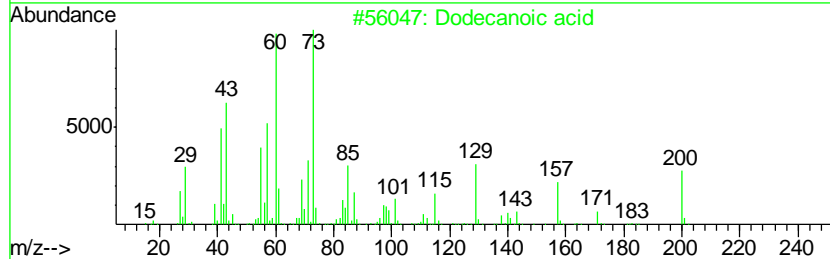
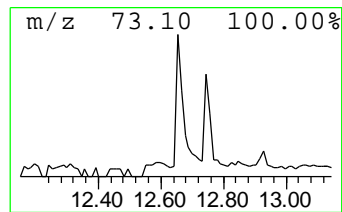
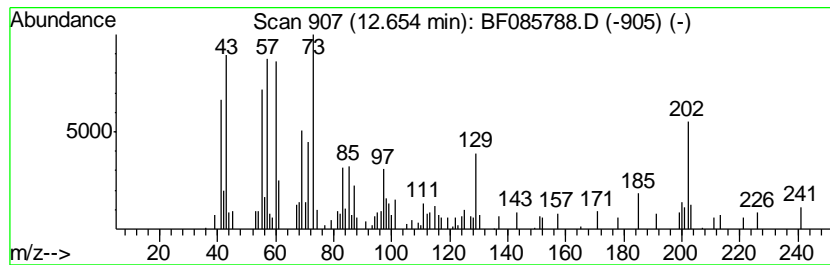
Instrument :
 BNA_F
 ClientSampleID :
 S-PG-D(0-6)

Quant Method : Z:\HPCHEM1\BNA F\METHODS\8270-BF032416.M
 Quant Title : ASP BNA STANDARDS FOR 5 POINT CALIBRATION

TIC Library : C:\DATABASE\NIST02.L
 TIC Integration Parameters: LSCINT.P

 Peak Number 7 Dodecanoic acid Concentration Rank 18

R.T.	EstConc	Area	Relative to ISTD	R.T.		
12.65	3.05 ng	99907	Phenanthrene-d10	11.34		
Hit# of	5	Tentative ID	MW	MolForm	CAS#	Qual
1		Dodecanoic acid	200	C12H24O2	000143-07-7	90
2		Tetradecanoic acid	228	C14H28O2	000544-63-8	74
3		Tridecanoic acid	214	C13H26O2	000638-53-9	58
4		Acetamide, N-(4-hydroxycyclohexy...	157	C8H15NO2	027489-61-8	18
5		Nonahexacontanoic acid	999	C69H138O2	040710-32-5	15



Data Path : Z:\HPCHEM1\BNA F\DATA\BF032516\
 Data File : BF085788.D
 Acq On : 26 Mar 2016 3:53
 Operator : UM/SJ
 Sample : H1923-04
 Misc :
 ALS Vial : 38 Sample Multiplier: 1

Instrument :
 BNA_F
 ClientSampleID :
 S-PG-D(0-6)

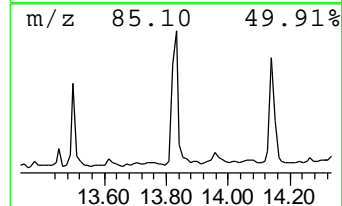
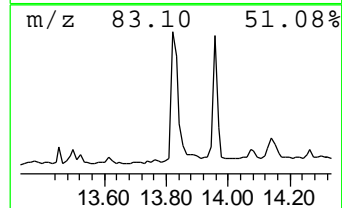
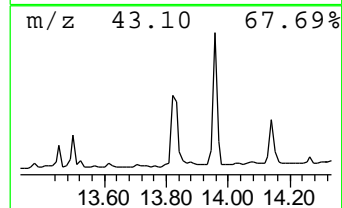
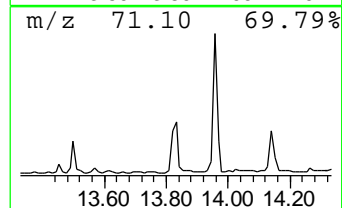
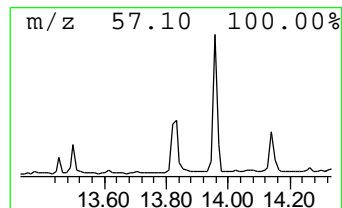
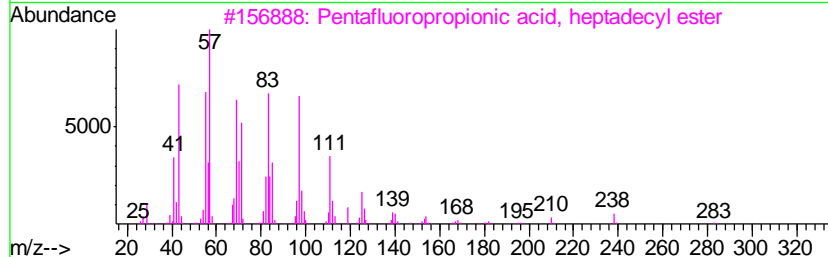
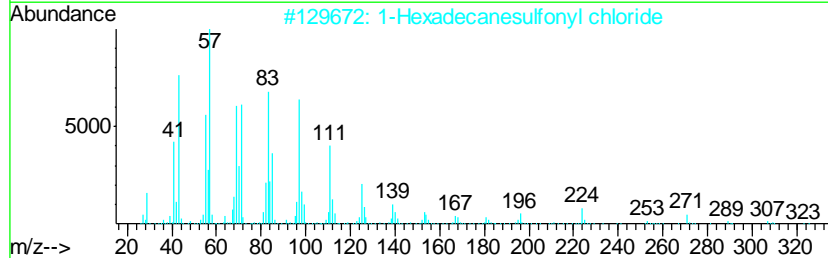
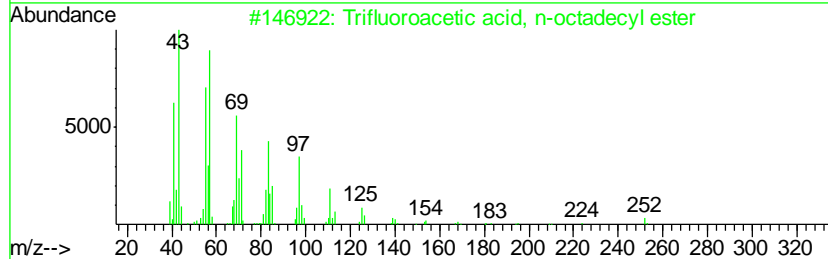
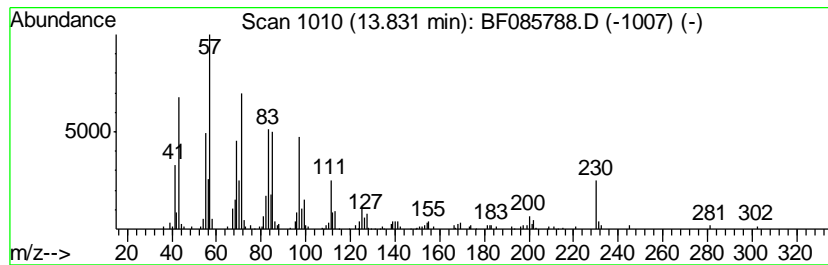
Quant Method : Z:\HPCHEM1\BNA F\METHODS\8270-BF032416.M
 Quant Title : ASP BNA STANDARDS FOR 5 POINT CALIBRATION

TIC Library : C:\DATABASE\NIST02.L
 TIC Integration Parameters: LSCINT.P

 Peak Number 8 Trifluoroacetic acid, n-oct... Concentration Rank 7

R.T.	EstConc	Area	Relative to ISTD	R.T.
13.83	4.43 ng	302555	Chrysene-d12	13.98

Hit#	of	Tentative ID	MW	MolForm	CAS#	Qual
1	5	Trifluoroacetic acid, n-octadecy...	366	C20H37F3O2	079392-43-1	74
2		1-Hexadecanesulfonyl chloride	324	C16H33ClO2S	038775-38-1	68
3		Pentafluoropropionic acid, hepta...	402	C20H35F5O2	1000283-04-2	64
4		Ethanol, 2-(tetradecyloxy)-	258	C16H34O2	002136-70-1	62
5		Heptafluorobutanoic acid, heptad...	452	C21H35F7O2	1000282-97-3	60



Data Path : Z:\HPCHEM1\BNA F\DATA\BF032516\
 Data File : BF085788.D
 Acq On : 26 Mar 2016 3:53
 Operator : UM/SJ
 Sample : H1923-04
 Misc :
 ALS Vial : 38 Sample Multiplier: 1

Instrument :
 BNA_F
 ClientSampleID :
 S-PG-D(0-6)

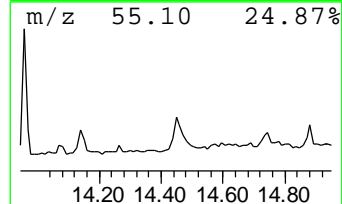
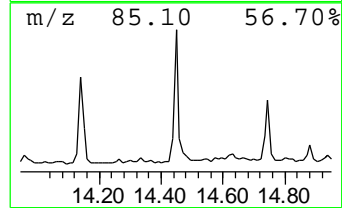
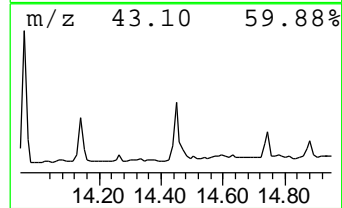
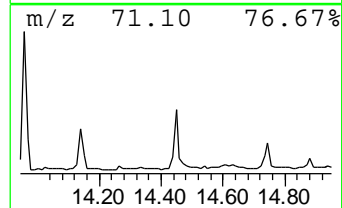
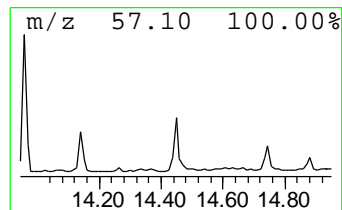
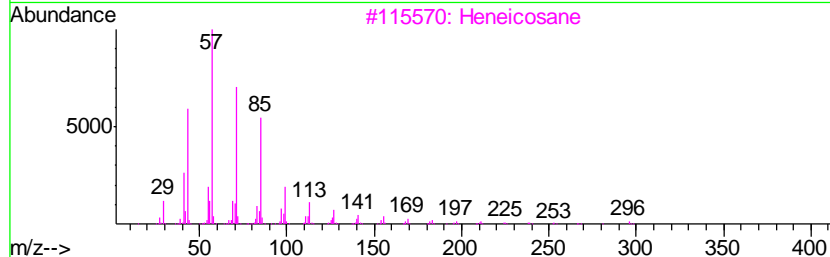
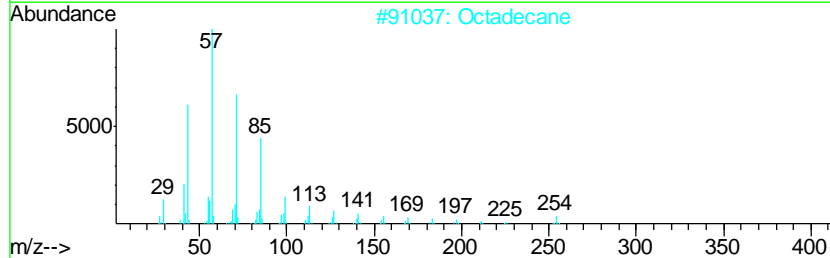
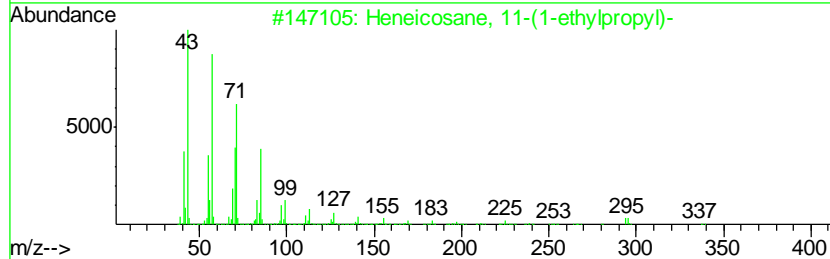
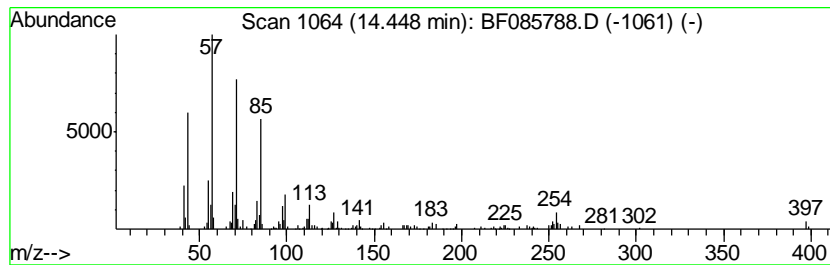
Quant Method : Z:\HPCHEM1\BNA F\METHODS\8270-BF032416.M
 Quant Title : ASP BNA STANDARDS FOR 5 POINT CALIBRATION

TIC Library : C:\DATABASE\NIST02.L
 TIC Integration Parameters: LSCINT.P

 Peak Number 9 Heneicosane, 11-(1-ethylpro... Concentration Rank 11

R.T.	EstConc	Area	Relative to ISTD	R.T.
14.45	3.92 ng	267725	Chrysene-d12	13.98

Hit#	of	Tentative ID	MW	MolForm	CAS#	Qual
1	5	Heneicosane, 11-(1-ethylpropyl)-	366	C26H54	055282-11-6	90
2		Octadecane	254	C18H38	000593-45-3	90
3		Heneicosane	296	C21H44	000629-94-7	90
4		Octacosane	394	C28H58	000630-02-4	90
5		Triacotane	422	C30H62	000638-68-6	87



Data Path : Z:\HPCHEM1\BNA F\DATA\BF032516\
 Data File : BF085788.D
 Acq On : 26 Mar 2016 3:53
 Operator : UM/SJ
 Sample : H1923-04
 Misc :
 ALS Vial : 38 Sample Multiplier: 1

Instrument :
 BNA_F
 ClientSampleID :
 S-PG-D(0-6)

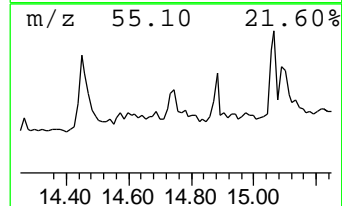
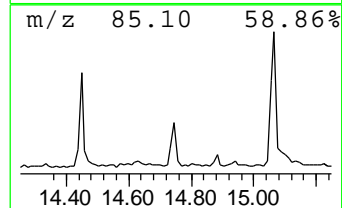
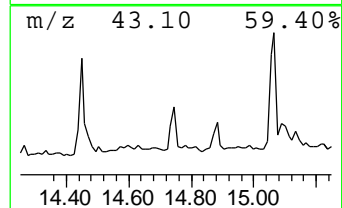
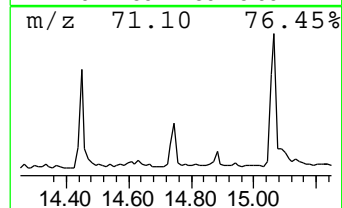
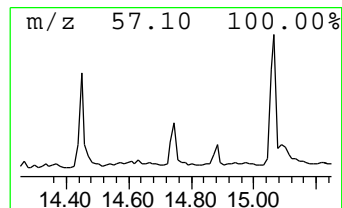
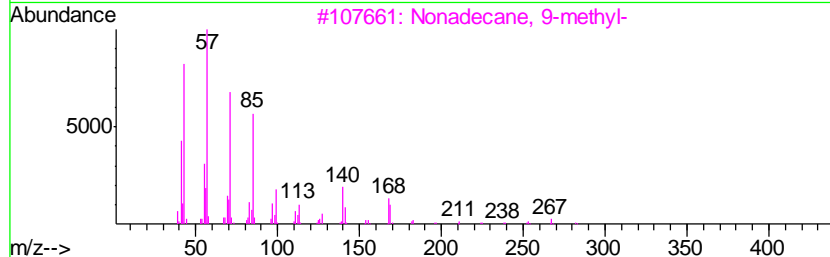
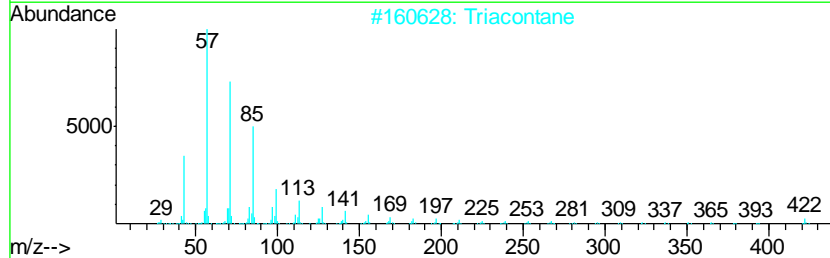
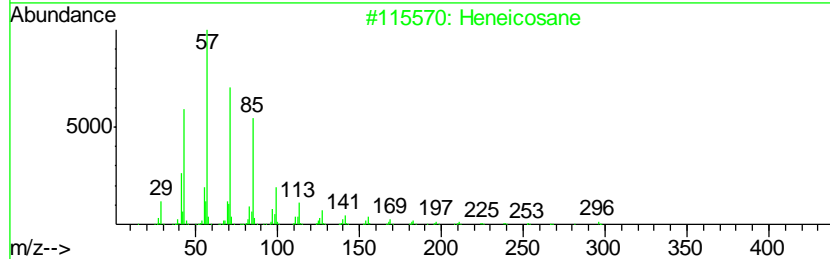
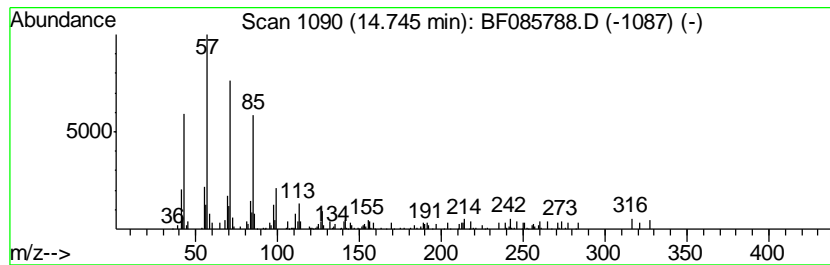
Quant Method : Z:\HPCHEM1\BNA F\METHODS\8270-BF032416.M
 Quant Title : ASP BNA STANDARDS FOR 5 POINT CALIBRATION

TIC Library : C:\DATABASE\NIST02.L
 TIC Integration Parameters: LSCINT.P

 Peak Number 10 Heneicosane Concentration Rank 12

R.T.	EstConc	Area	Relative to ISTD	R.T.
14.75	3.53 ng	97955	Perylene-d12	15.40

Hit#	of	Tentative ID	MW	MolForm	CAS#	Qual
1	5	Heneicosane	296	C21H44	000629-94-7	81
2		Triacontane	422	C30H62	000638-68-6	81
3		Nonadecane, 9-methyl-	282	C20H42	013287-24-6	74
4		Docosane	310	C22H46	000629-97-0	74
5		Nonadecane, 2-methyl-	282	C20H42	001560-86-7	72



Data Path : Z:\HPCHEM1\BNA F\DATA\BF032516\
 Data File : BF085788.D
 Acq On : 26 Mar 2016 3:53
 Operator : UM/SJ
 Sample : H1923-04
 Misc :
 ALS Vial : 38 Sample Multiplier: 1

Instrument :
 BNA_F
 ClientSampled :
 S-PG-D(0-6)

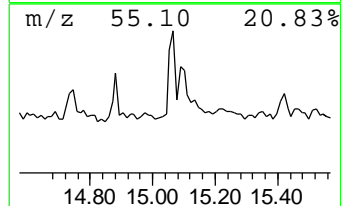
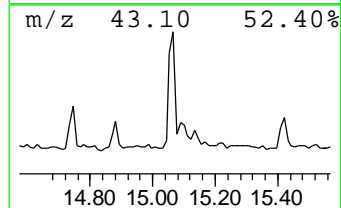
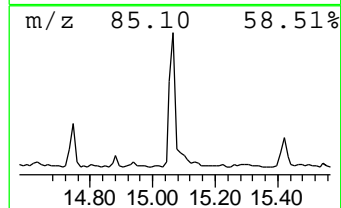
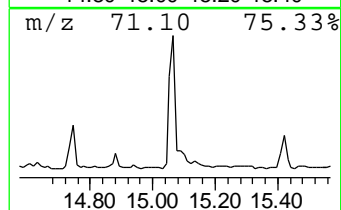
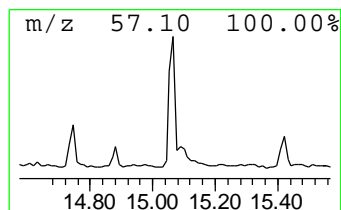
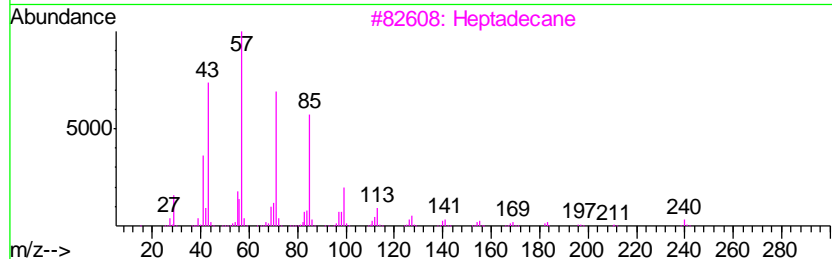
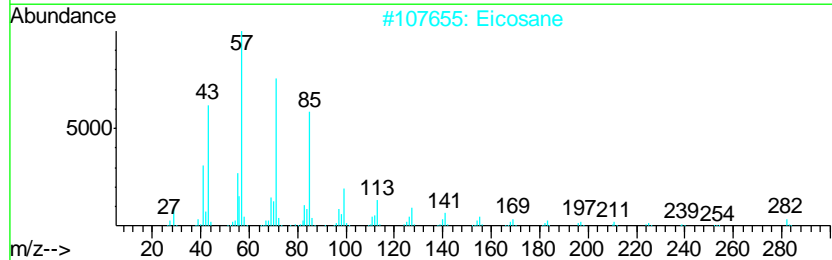
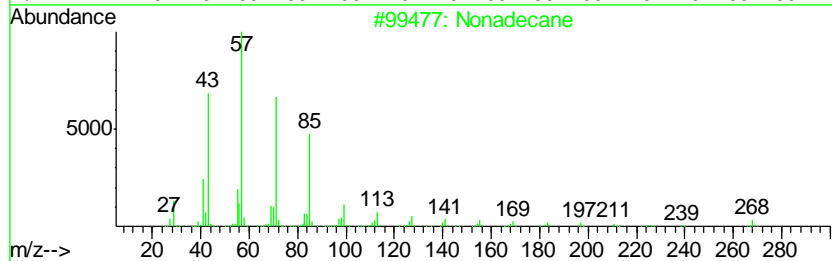
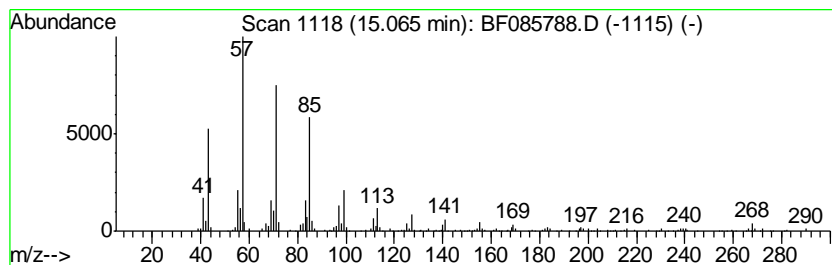
Quant Method : Z:\HPCHEM1\BNA F\METHODS\8270-BF032416.M
 Quant Title : ASP BNA STANDARDS FOR 5 POINT CALIBRATION

TIC Library : C:\DATABASE\NIST02.L
 TIC Integration Parameters: LSCINT.P

 Peak Number 11 Nonadecane Concentration Rank 5

R.T.	EstConc	Area	Relative to ISTD	R.T.
15.07	7.38 ng	204698	Perylene-d12	15.40

Hit#	of	Tentative ID	MW	MolForm	CAS#	Qual
1	5	Nonadecane	268	C19H40	000629-92-5	96
2		Eicosane	282	C20H42	000112-95-8	93
3		Heptadecane	240	C17H36	000629-78-7	93
4		Tetratriacontane	479	C34H70	014167-59-0	90
5		Dodecane, 2-methyl-	184	C13H28	001560-97-0	90



Data Path : Z:\HPCHEM1\BNA F\DATA\BF032516\
 Data File : BF085788.D
 Acq On : 26 Mar 2016 3:53
 Operator : UM/SJ
 Sample : H1923-04
 Misc :
 ALS Vial : 38 Sample Multiplier: 1

Instrument :
 BNA_F
 ClientSampleID :
 S-PG-D(0-6)

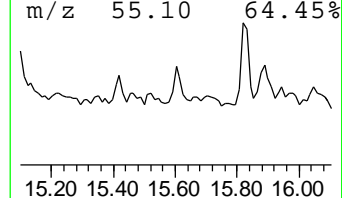
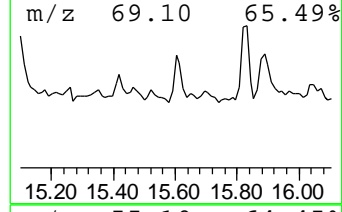
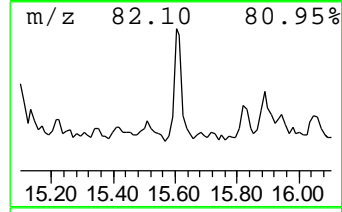
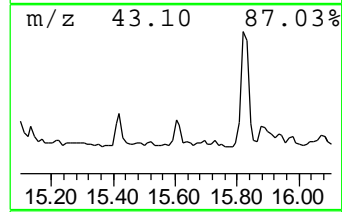
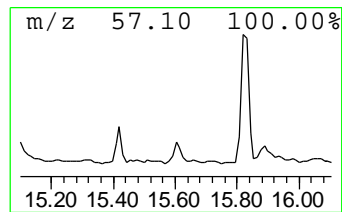
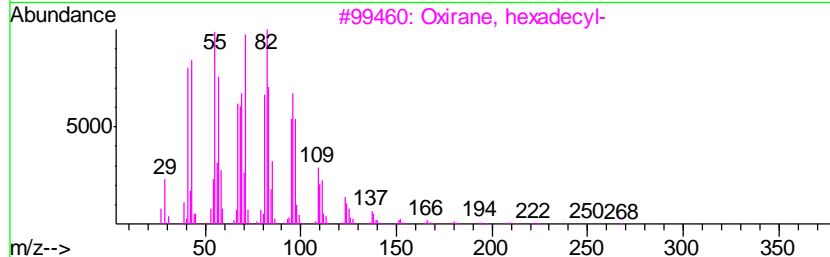
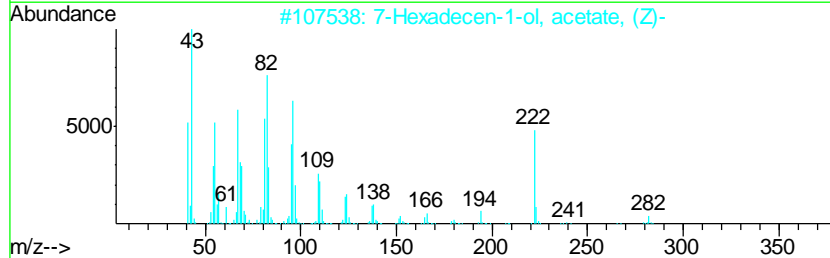
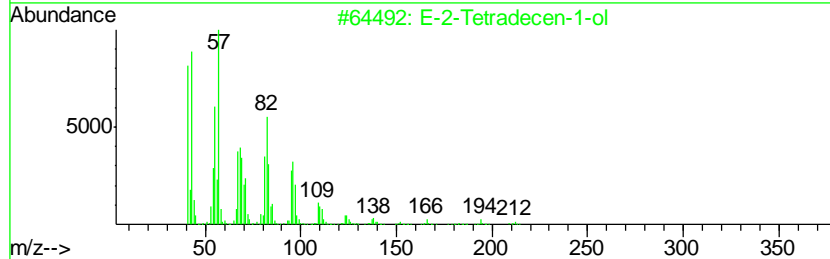
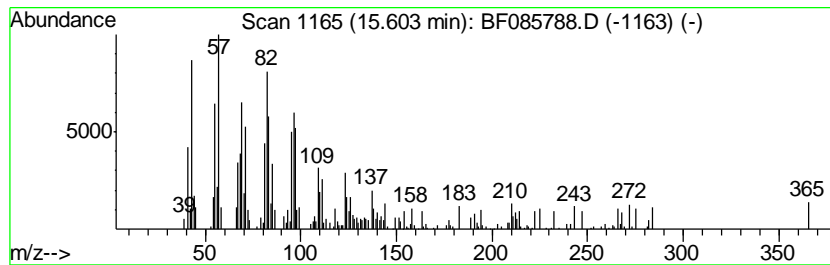
Quant Method : Z:\HPCHEM1\BNA F\METHODS\8270-BF032416.M
 Quant Title : ASP BNA STANDARDS FOR 5 POINT CALIBRATION

TIC Library : C:\DATABASE\NIST02.L
 TIC Integration Parameters: LSCINT.P

 Peak Number 14 E-2-Tetradecen-1-ol Concentration Rank 10

R.T.	EstConc	Area	Relative to ISTD	R.T.
15.60	4.04 ng	112185	Perylene-d12	15.40

Hit#	of	Tentative ID	MW	MolForm	CAS#	Qual
1	5	E-2-Tetradecen-1-ol	212	C14H28O	1000130-83-7	93
2		7-Hexadecen-1-ol, acetate, (Z)-	282	C18H34O2	023192-42-9	83
3		Oxirane, hexadecyl-	268	C18H36O	007390-81-0	76
4		E,E-3,13-Octadecadien-1-ol	266	C18H34O	1000131-08-9	70
5		Pentadecanal-	226	C15H30O	002765-11-9	64



Data Path : Z:\HPCHEM1\BNA F\DATA\BF032516\
 Data File : BF085788.D
 Acq On : 26 Mar 2016 3:53
 Operator : UM/SJ
 Sample : H1923-04
 Misc :
 ALS Vial : 38 Sample Multiplier: 1

Instrument :
 BNA_F
 ClientSampleID :
 S-PG-D(0-6)

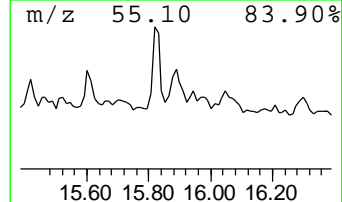
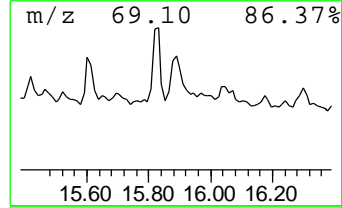
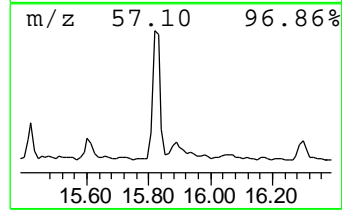
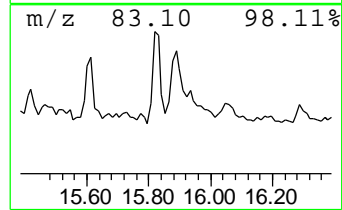
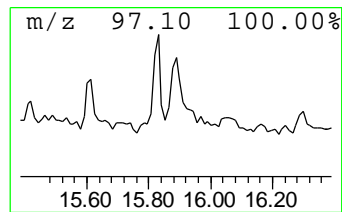
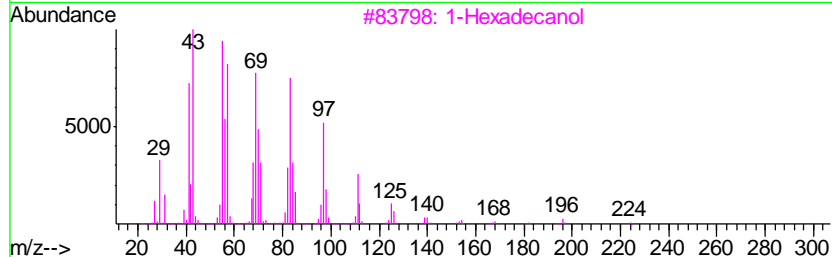
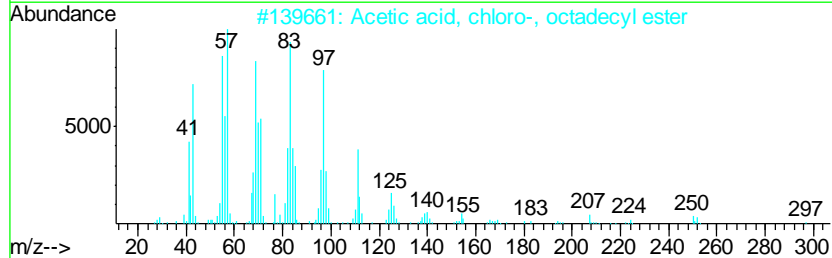
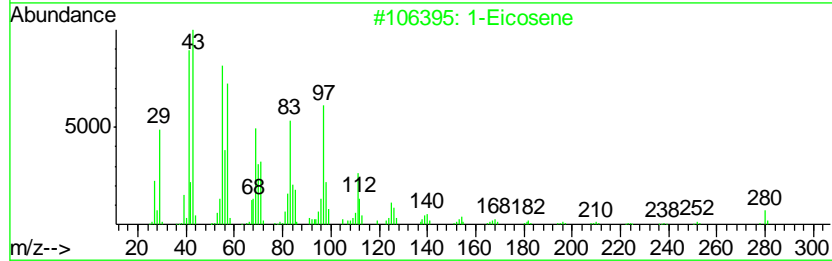
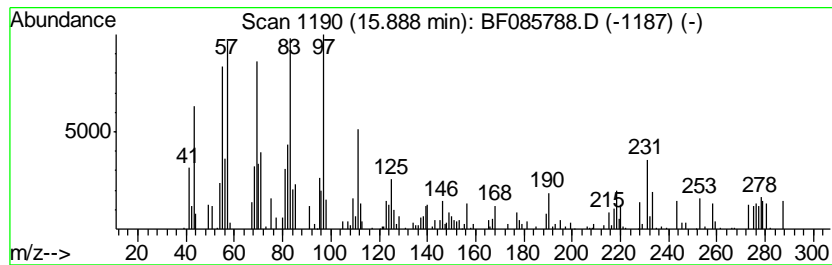
Quant Method : Z:\HPCHEM1\BNA F\METHODS\8270-BF032416.M
 Quant Title : ASP BNA STANDARDS FOR 5 POINT CALIBRATION

TIC Library : C:\DATABASE\NIST02.L
 TIC Integration Parameters: LSCINT.P

 Peak Number 16 1-Eicosene Concentration Rank 15

R.T.	EstConc	Area	Relative to ISTD	R.T.
15.89	3.33 ng	92304	Perylene-d12	15.40

Hit#	of	Tentative ID	MW	MolForm	CAS#	Qual
1	5	1-Eicosene	280	C20H40	003452-07-1	78
2		Acetic acid, chloro-, octadecyl ...	346	C20H39ClO2	005348-82-3	72
3		1-Hexadecanol	242	C16H34O	036653-82-4	72
4		Cyclopentane, 1,1,3-trimethyl-	112	C8H16	004516-69-2	58
5		Cyclooctane, 1,2-diethyl-	168	C12H24	023609-46-3	53



Data Path : Z:\HPCHEM1\BNA F\DATA\BF032516\
 Data File : BF085788.D
 Acq On : 26 Mar 2016 3:53
 Operator : UM/SJ
 Sample : H1923-04
 Misc :
 ALS Vial : 38 Sample Multiplier: 1

Instrument :
 BNA_F
 ClientSampleID :
 S-PG-D(0-6)

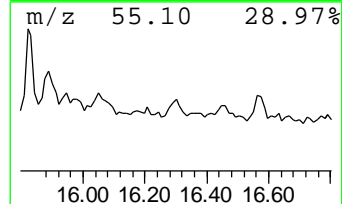
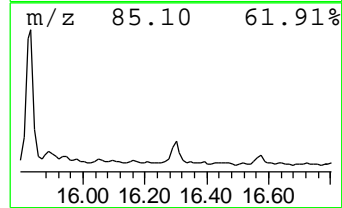
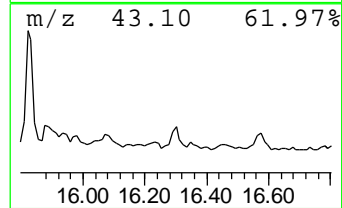
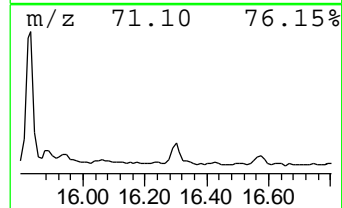
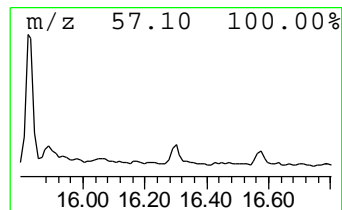
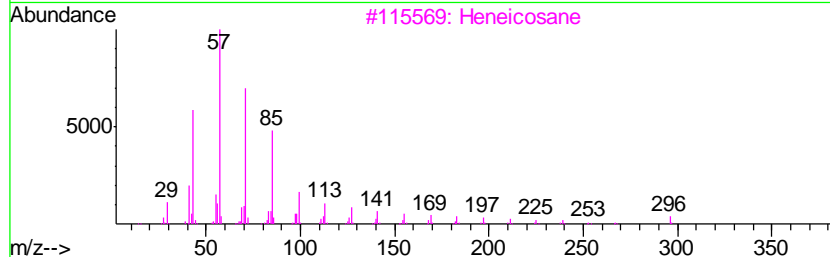
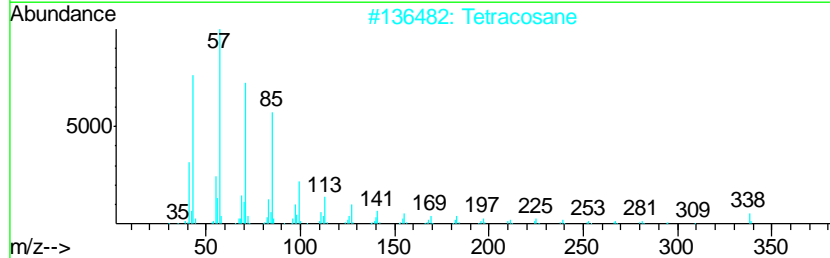
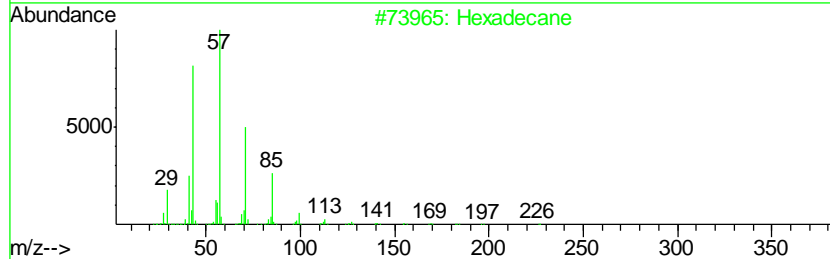
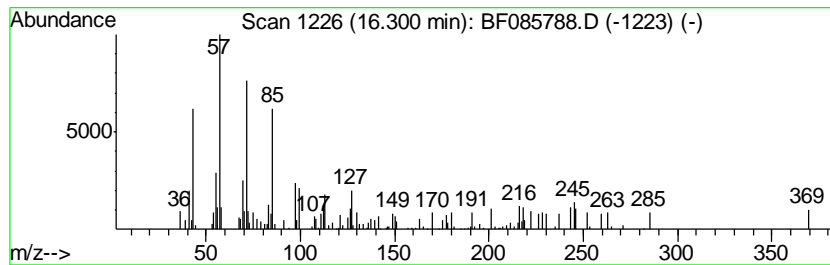
Quant Method : Z:\HPCHEM1\BNA F\METHODS\8270-BF032416.M
 Quant Title : ASP BNA STANDARDS FOR 5 POINT CALIBRATION

TIC Library : C:\DATABASE\NIST02.L
 TIC Integration Parameters: LSCINT.P

 Peak Number 17 Hexadecane Concentration Rank 19

R.T.	EstConc	Area	Relative to ISTD	R.T.
16.30	2.65 ng	73605	Perylene-d12	15.40

Hit#	of	Tentative ID	MW	MolForm	CAS#	Qual
1	5	Hexadecane	226	C16H34	000544-76-3	58
2		Tetracosane	338	C24H50	000646-31-1	53
3		Heneicosane	296	C21H44	000629-94-7	50
4		Docosane, 11-butyl-	366	C26H54	013475-76-8	50
5		Heptadecane, 9-octyl-	352	C25H52	007225-64-1	50



Data Path : Z:\HPCHEM1\BNA F\DATA\BF032516\
 Data File : BF085788.D
 Acq On : 26 Mar 2016 3:53
 Operator : UM/SJ
 Sample : H1923-04
 Misc :
 ALS Vial : 38 Sample Multiplier: 1

Instrument :
 BNA_F
 ClientSampled :
 S-PG-D(0-6)

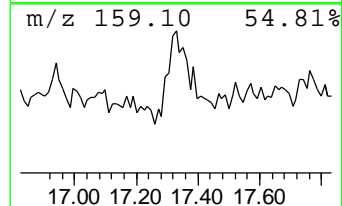
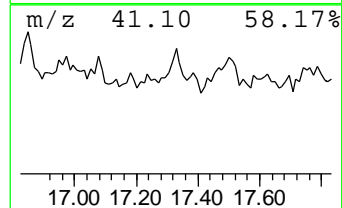
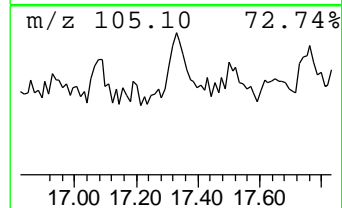
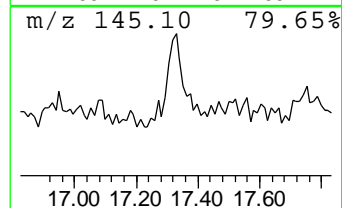
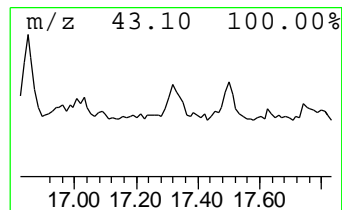
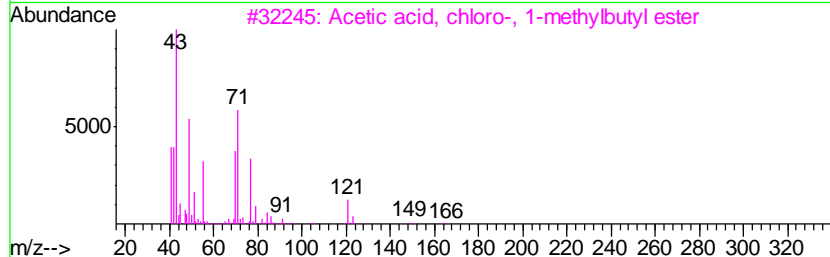
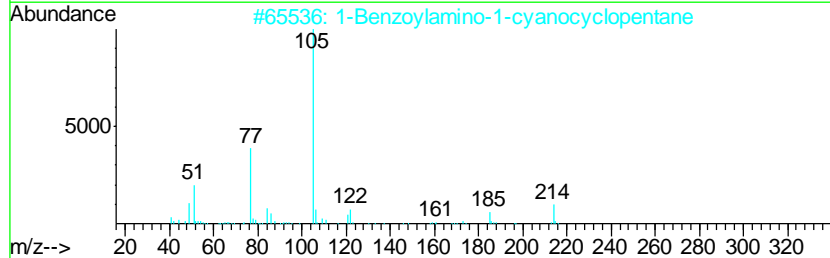
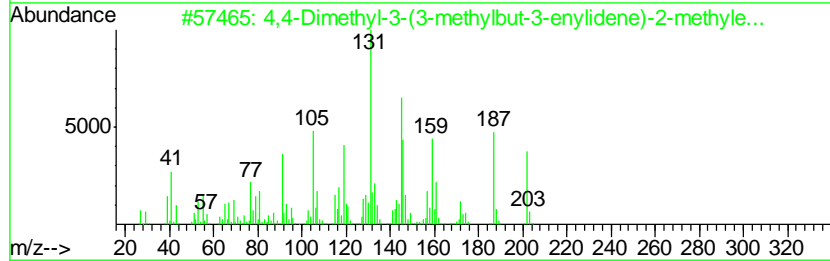
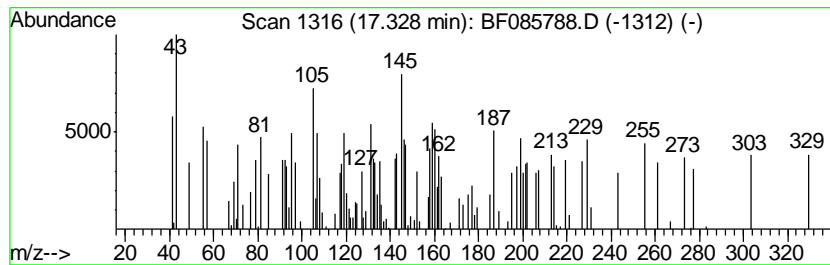
Quant Method : Z:\HPCHEM1\BNA F\METHODS\8270-BF032416.M
 Quant Title : ASP BNA STANDARDS FOR 5 POINT CALIBRATION

TIC Library : C:\DATABASE\NIST02.L
 TIC Integration Parameters: LSCINT.P

 Peak Number 19 unknown17.33 Concentration Rank 13

R.T.	EstConc	Area	Relative to ISTD	R.T.
17.33	3.45 ng	95705	Perylene-d12	15.40

Hit#	of	Tentative ID	MW	MolForm	CAS#	Qual
1	4,4-Dimethyl-3-(3-methylbut-3-en...	202	C15H22	079718-83-5	44	
2	1-Benzoylamino-1-cyanocyclopentane	214	C13H14N2O	091806-24-5	10	
3	Acetic acid, chloro-, 1-methylbu...	164	C7H13ClO2	090380-52-2	10	
4	2-Acetamidoquinoxaline	187	C10H9N3O	006479-24-9	9	
5	Propane, 1-bromo-3-chloro-	156	C3H6BrCl	000109-70-6	9	



Data Path : Z:\HPCHEM1\BNA F\DATA\BF032516\
 Data File : BF085788.D
 Acq On : 26 Mar 2016 3:53
 Operator : UM/SJ
 Sample : H1923-04
 Misc :
 ALS Vial : 38 Sample Multiplier: 1

Instrument :
 BNA_F
 ClientSampled :
 S-PG-D(0-6)

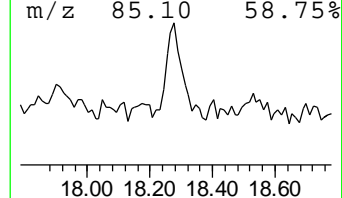
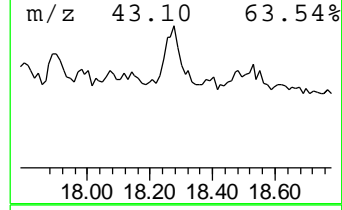
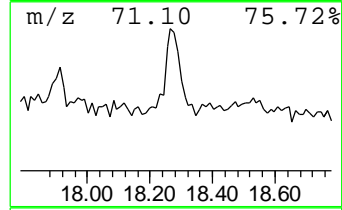
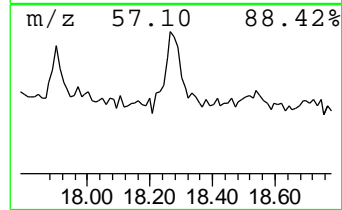
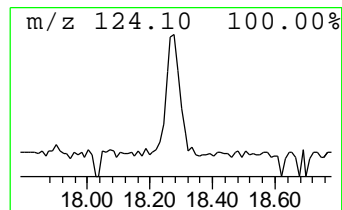
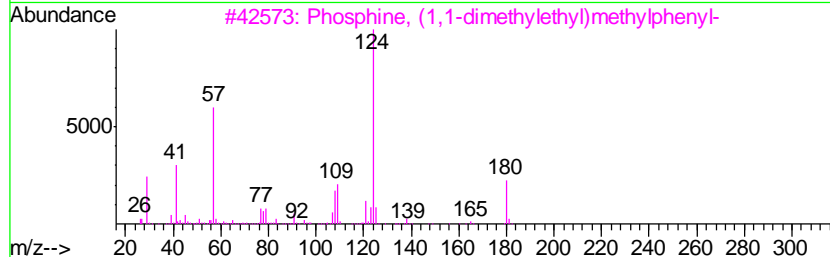
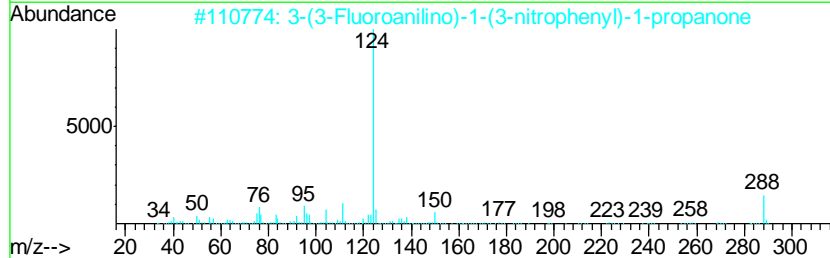
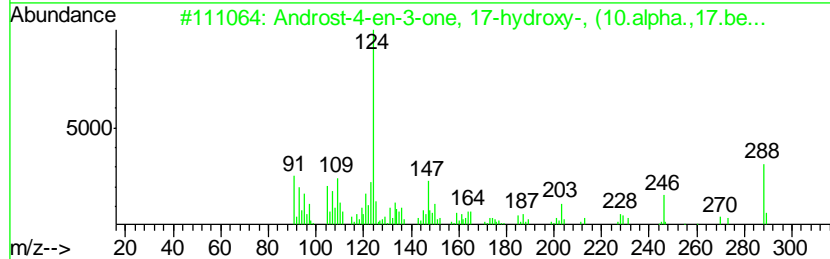
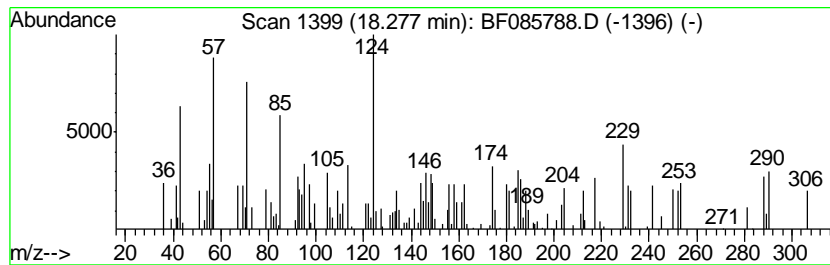
Quant Method : Z:\HPCHEM1\BNA F\METHODS\8270-BF032416.M
 Quant Title : ASP BNA STANDARDS FOR 5 POINT CALIBRATION

TIC Library : C:\DATABASE\NIST02.L
 TIC Integration Parameters: LSCINT.P

 Peak Number 20 unknown18.28 Concentration Rank 8

R.T.	EstConc	Area	Relative to ISTD	R.T.
18.28	4.21 ng	116714	Perylene-d12	15.40

Hit#	of	Tentative ID	MW	MolForm	CAS#	Qual
1	5	Androst-4-en-3-one, 17-hydroxy-, ...	288	C19H28O2	000604-39-7	25
2		3-(3-Fluoroanilino)-1-(3-nitroph...	288	C15H13FN2O3	300726-64-1	22
3		Phosphine, (1,1-dimethylethyl)me...	180	C11H17P	007621-16-1	15
4		Tetramethyl methylenediphosphonate	232	C5H14O6P2	016001-93-7	12
5		Androstan-3,11,17-triol, (3.alpha...	308	C19H32O3	004484-95-1	12



Data Path : Z:\HPCHEM1\BNA_F\DATA\BF032516\
 Data File : BF085788.D
 Acq On : 26 Mar 2016 3:53
 Operator : UM/SJ
 Sample : H1923-04
 Misc :
 ALS Vial : 38 Sample Multiplier: 1

Instrument :
 BNA_F
 ClientSampleId :
 S-PG-D(0-6)

Quant Method : Z:\HPCHEM1\BNA_F\METHODS\8270-BF032416.M
 Quant Title : ASP BNA STANDARDS FOR 5 POINT CALIBRATION

TIC Library : C:\DATABASE\NIST02.L
 TIC Integration Parameters: LSCINT.P

TIC Top Hit name	RT	EstConc	Units	Response	--Internal Standard--			
					#	RT	Resp	Conc
2-Pentanone, 4-hy...	5.00	25.9	ng	837796	1	6.82	645595	20.0
Heptadecane	10.30	3.2	ng	108182	3	9.86	670234	20.0
Eicosane	10.77	3.4	ng	110430	4	11.34	655499	20.0
n-Hexadecanoic acid	11.88	6.2	ng	202228	4	11.34	655499	20.0
Dodecanoic acid	12.65	3.0	ng	99907	4	11.34	655499	20.0
Trifluoroacetic a...	13.83	4.4	ng	302555	5	13.98	1364710	20.0
Heneicosane, 11-(...	14.45	3.9	ng	267725	5	13.98	1364710	20.0
Heneicosane	14.75	3.5	ng	97955	6	15.40	554731	20.0
Nonadecane	15.07	7.4	ng	204698	6	15.40	554731	20.0
E-2-Tetradecen-1-ol	15.60	4.0	ng	112185	6	15.40	554731	20.0
1-Eicosene	15.89	3.3	ng	92304	6	15.40	554731	20.0
Hexadecane	16.30	2.6	ng	73605	6	15.40	554731	20.0
unknown17.33	17.33	3.5	ng	95705	6	15.40	554731	20.0
unknown18.28	18.28	4.2	ng	116714	6	15.40	554731	20.0