

Data Path : Z:\SVOASRV\HPCHEM1\BNA_F\DATA\BF032520\
 Data File : BF119523.D
 Acq On : 26 Mar 2020 2:43
 Operator : CG/JU
 Sample : L2013-07 10X
 Misc :
 ALS Vial : 26 Sample Multiplier: 1

Instrument :
 BNA_F
 ClientSampleId :
 GHD1-BC-IB-0-5

Quant Time: Mar 26 07:00:21 2020
 Quant Method : Z:\SVOASRV\HPCHEM1\BNA_F\METHODS\8270-BF031820.M
 Quant Title : ASP BNA STANDARDS FOR 5 POINT CALIBRATION
 QLast Update : Wed Mar 18 15:11:18 2020
 Response via : Initial Calibration

Internal Standards	R.T.	QIon	Response	Conc	Units	Dev(Min)
1) 1,4-Dichlorobenzene-d4	6.84	152	283284	20.00	ng	-0.02
21) Naphthalene-d8	8.13	136	1052825	20.00	ng	-0.02
39) Acenaphthene-d10	9.89	164	538664	20.00	ng	-0.02
64) Phenanthrene-d10	11.37	188	951623	20.00	ng	-0.02
76) Chrysene-d12	14.01	240	547590	20.00	ng	-0.02
87) Perylene-d12	15.48	264	566306	20.00	ng	-0.02

System Monitoring Compounds	R.T.	QIon	Response	Conc	Units	Dev(Min)
5) 2-Fluorophenol	5.44	112	199414	11.21	ng	-0.02
7) Phenol-d6	6.45	99	257558	11.33	ng	-0.02
23) Nitrobenzene-d5	7.40	82	153541	7.93	ng	-0.02
42) 2,4,6-Tribromophenol	10.67	330	66094	11.89	ng	-0.02
45) 2-Fluorobiphenyl	9.20	172	317002	8.72	ng	-0.02
79) Terphenyl-d14	12.96	244	294678	10.54	ng	-0.02

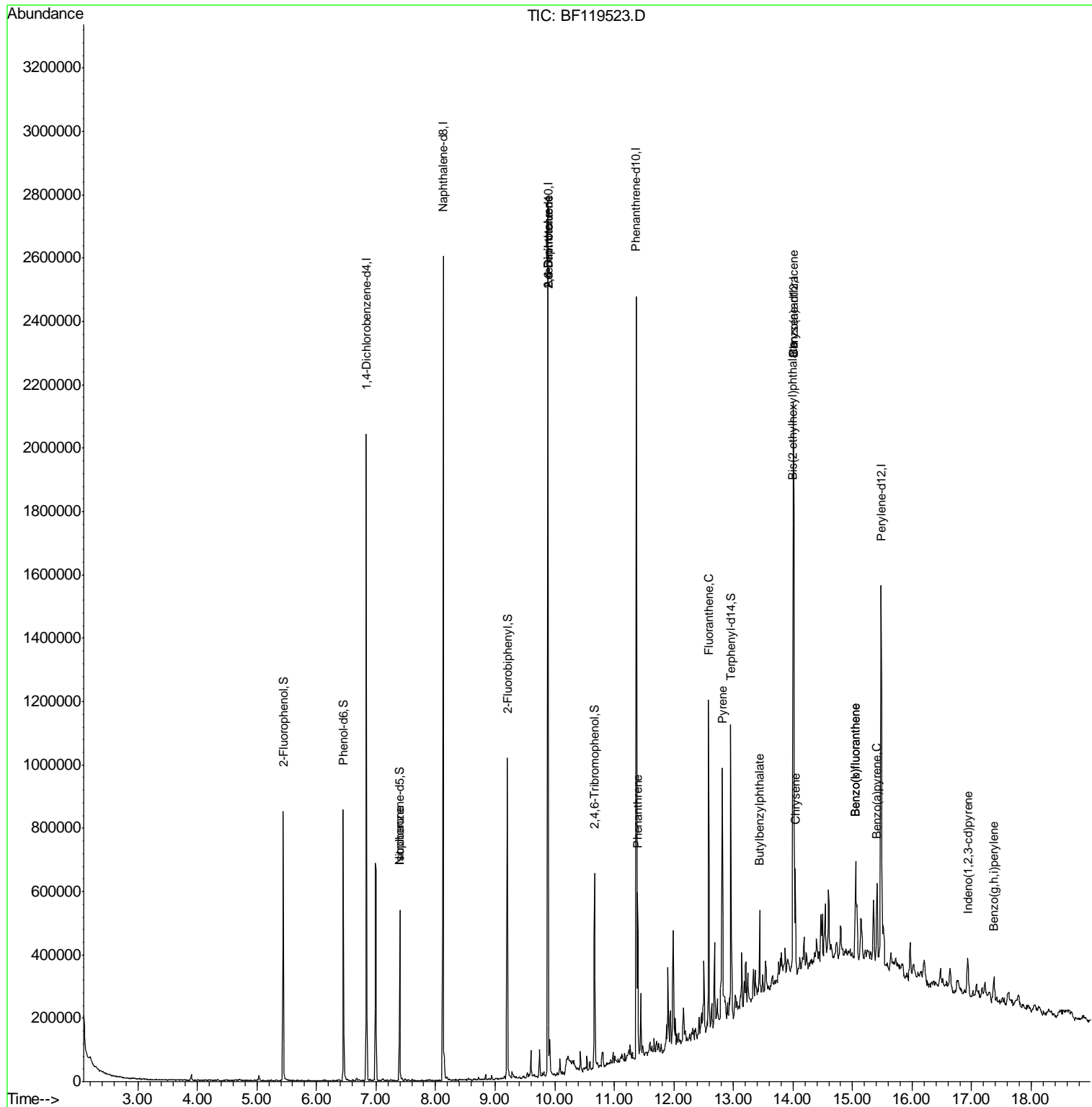
Target Compounds	R.T.	QIon	Response	Conc	Units	Qvalue
25) Isophorone	7.40	82	153363	3.903	ng	# 66
51) 2,6-Dinitrotoluene	9.89	165	69028	8.417	ng	# 18
57) 2,4-Dinitrotoluene	9.89	165	69299	6.708	ng	# 25
71) Phenanthrene	11.39	178	171286	3.471	ng	99
75) Fluoranthene	12.59	202	385821	7.225	ng	97
78) Pyrene	12.82	202	333427	7.419	ng	97
80) Butylbenzylphthalate	13.44	149	55644	3.061	ng	93
81) Benzo(a)anthracene	14.00	228	155083	4.355	ng	96
83) Chrysene	14.04	228	136543	3.715	ng	96
84) Bis(2-ethylhexyl)phthalate	14.00	149	142560	6.579	ng	97
86) Indeno(1,2,3-cd)pyrene	16.93	276	80962	2.339	ng	# 92
88) Benzo(b)fluoranthene	15.05	252	238342	6.300	ng	98
89) Benzo(k)fluoranthene	15.05	252	238197	6.613	ng	99
90) Benzo(a)pyrene	15.42	252	131520	3.826	ng	97
92) Benzo(g,h,i)perylene	17.37	276	74211	2.457	ng	# 92

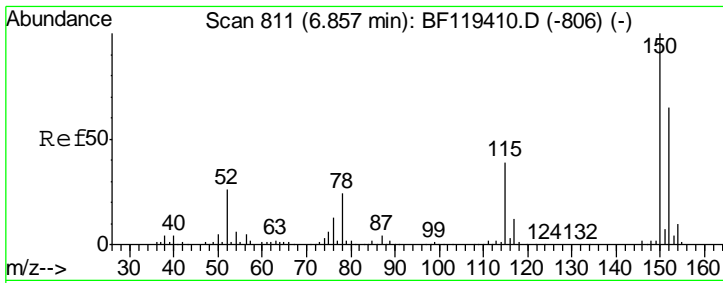
(#) = qualifier out of range (m) = manual integration (+) = signals summed

Data Path : Z:\SVOASRV\HPCHEM1\BNA_F\DATA\BF032520\
 Data File : BF119523.D
 Acq On : 26 Mar 2020 2:43
 Operator : CG/JU
 Sample : L2013-07 10X
 Misc :
 ALS Vial : 26 Sample Multiplier: 1

Instrument :
 BNA_F
 Client Sampled :
 GHD1-BC-IB-0-5

Quant Time: Mar 26 07:00:21 2020
 Quant Method : Z:\SVOASRV\HPCHEM1\BNA_F\METHODS\8270-BF031820.M
 Quant Title : ASP BNA STANDARDS FOR 5 POINT CALIBRATION
 QLast Update : Wed Mar 18 15:11:18 2020
 Response via : Initial Calibration

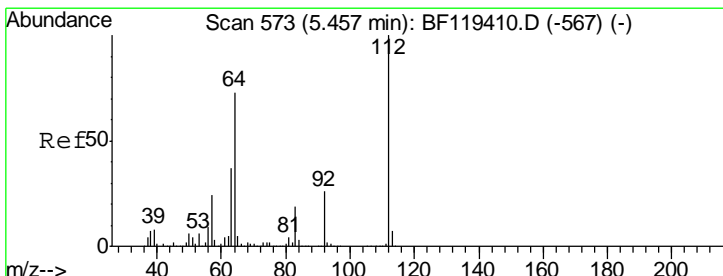
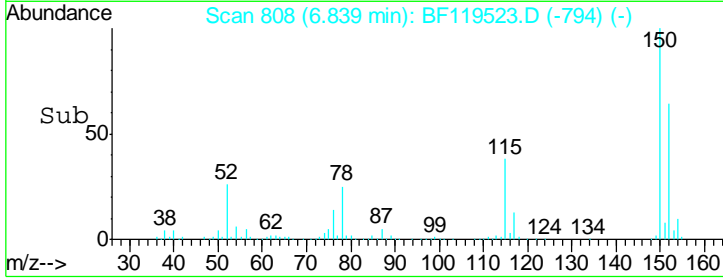
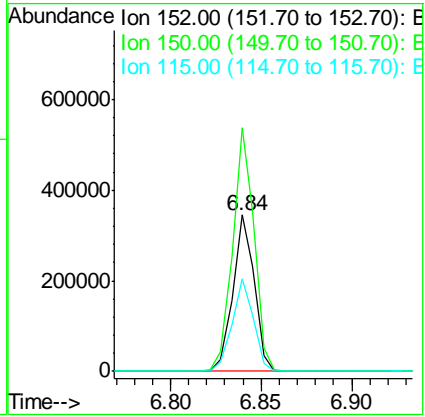
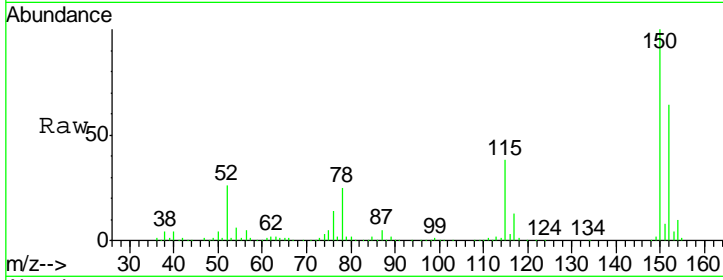




#1
 1,4-Dichlorobenzene-d4
 Concen: 20.000 ng
 RT: 6.84 min Scan# 808
 Delta R.T. -0.02 min
 Lab File: BF119523.D
 Acq: 26 Mar 2020 2:43

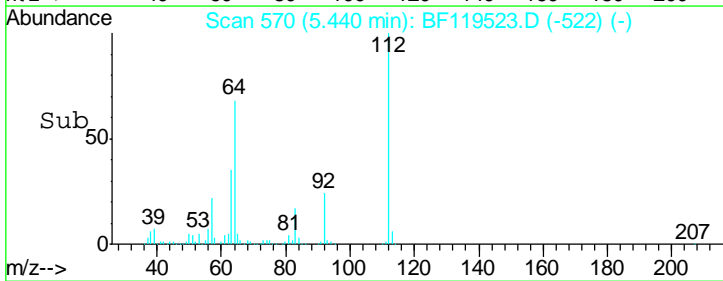
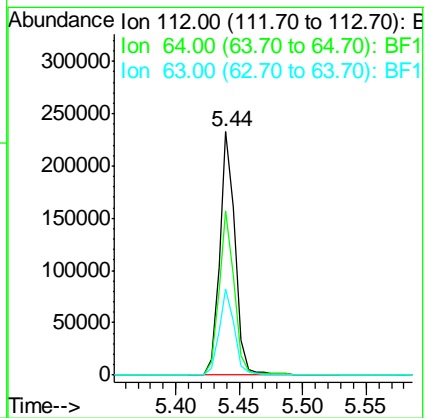
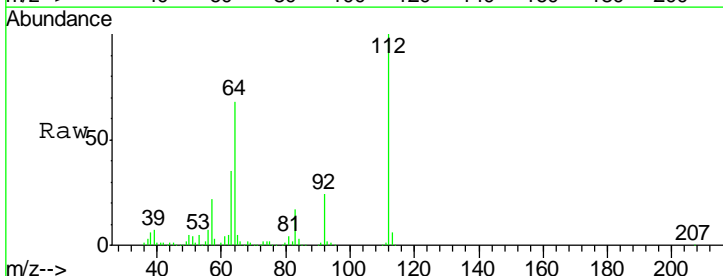
Instrument :
 BNA_F
ClientSampled :
 GHD1-BC-IB-0-5

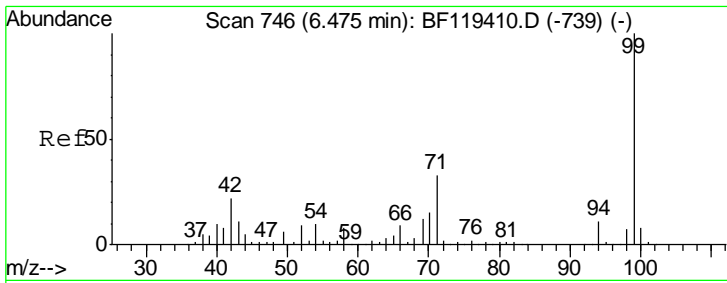
Tgt Ion	Resp	Lower	Upper
152	283284		
152	100		
150	155.6	123.9	185.9
115	58.8	47.8	71.6



#5
 2-Fluorophenol
 Concen: 11.206 ng
 RT: 5.44 min Scan# 570
 Delta R.T. -0.02 min
 Lab File: BF119523.D
 Acq: 26 Mar 2020 2:43

Tgt Ion	Resp	Lower	Upper
112	199414		
112	100		
64	67.6	58.1	87.1
63	35.5	29.7	44.5

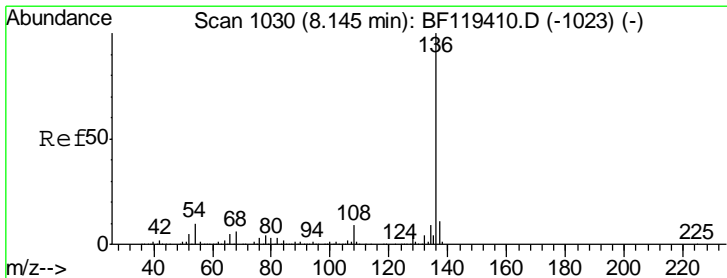
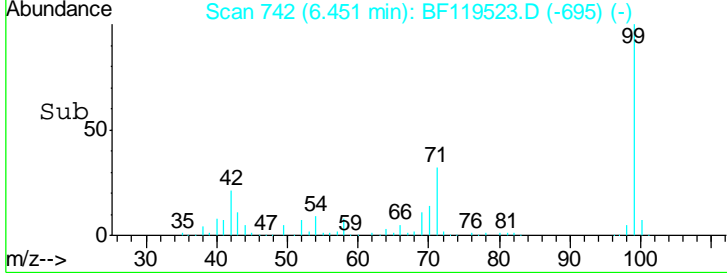
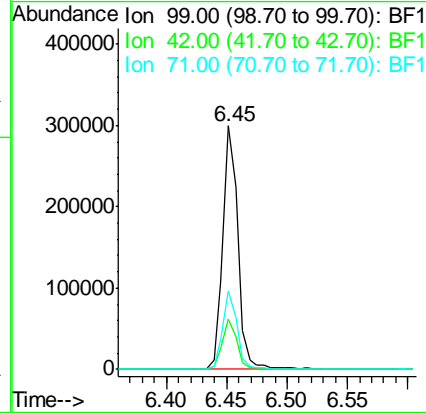
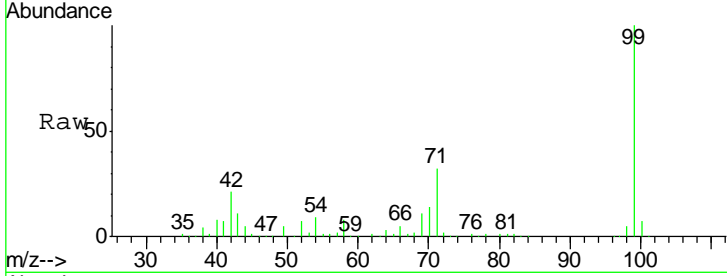




#7
 Phenol-d6
 Concen: 11.330 ng
 RT: 6.45 min Scan# 742
 Delta R.T. -0.02 min
 Lab File: BF119523.D
 Acq: 26 Mar 2020 2:43

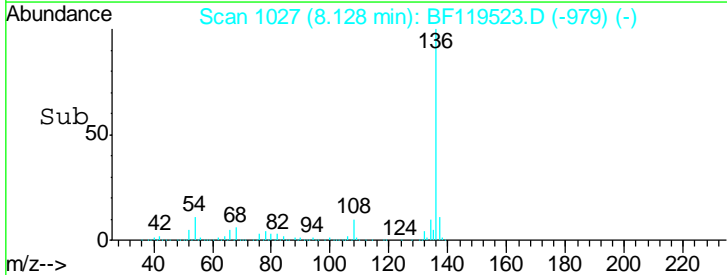
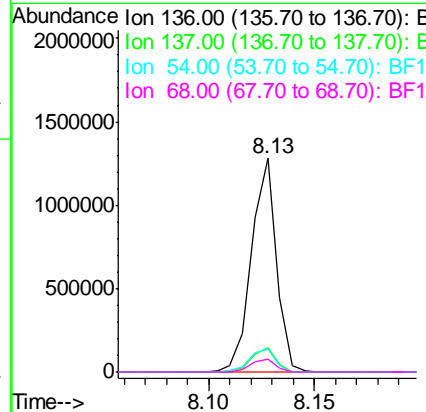
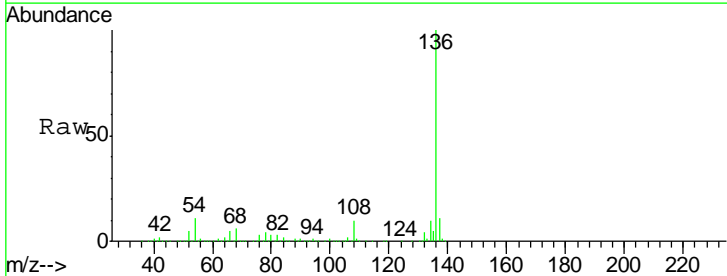
Instrument :
 BNA_F
 ClientSampleId :
 GHD1-BC-IB-0-5

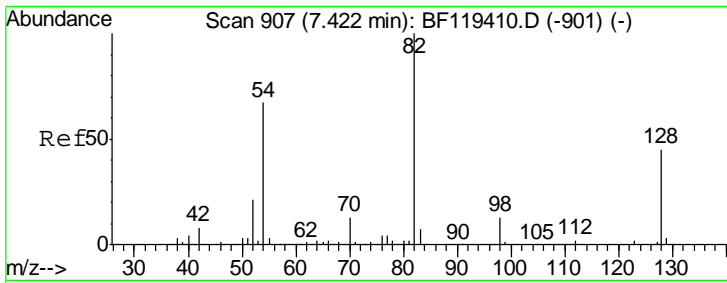
Tgt Ion	Resp	Lower	Upper
99	257558		
42	20.9	17.8	26.6
71	32.1	26.0	39.0



#21
 Naphthalene-d8
 Concen: 20.000 ng
 RT: 8.13 min Scan# 1027
 Delta R.T. -0.02 min
 Lab File: BF119523.D
 Acq: 26 Mar 2020 2:43

Tgt Ion	Resp	Lower	Upper
136	1052825		
137	11.2	8.4	12.6
54	10.7	8.3	12.5
68	5.9	4.9	7.3

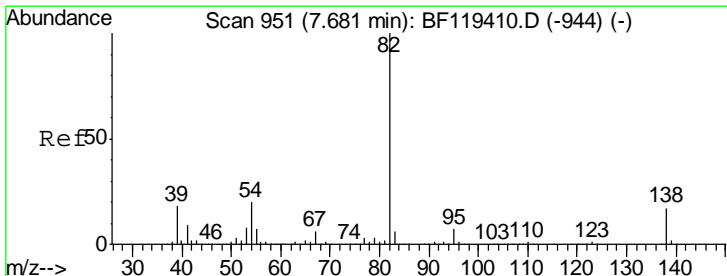
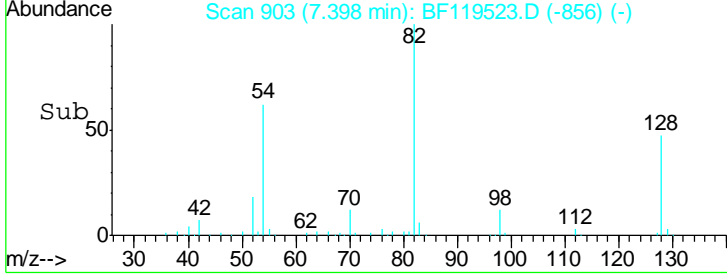
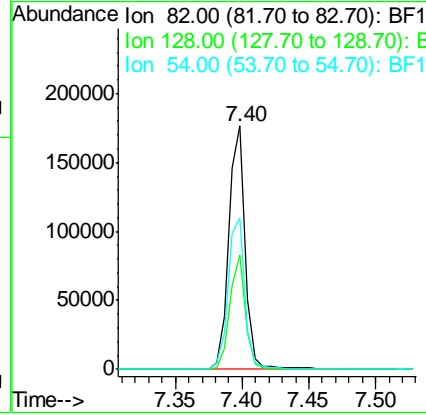
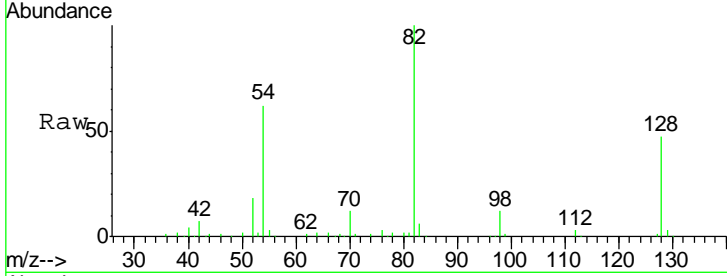




#23
 Nitrobenzene-d5
 Concen: 7.926 ng
 RT: 7.40 min Scan# 903
 Delta R.T. -0.02 min
 Lab File: BF119523.D
 Acq: 26 Mar 2020 2:43

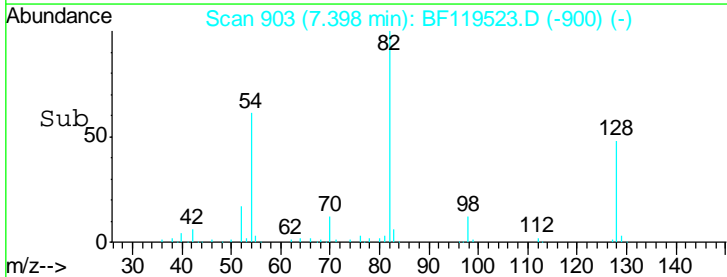
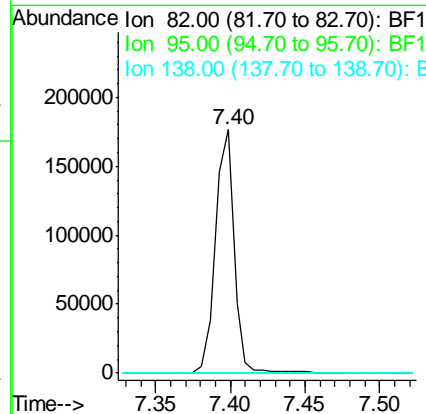
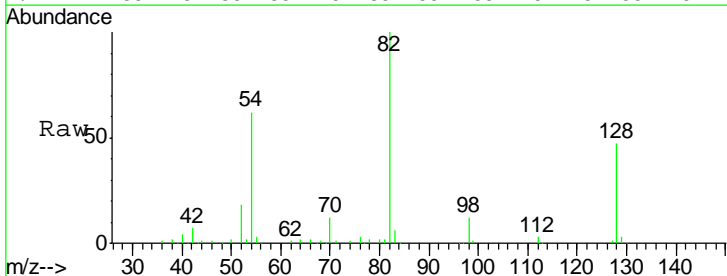
Instrument :
 BNA_F
ClientSampled :
 GHD1-BC-IB-0-5

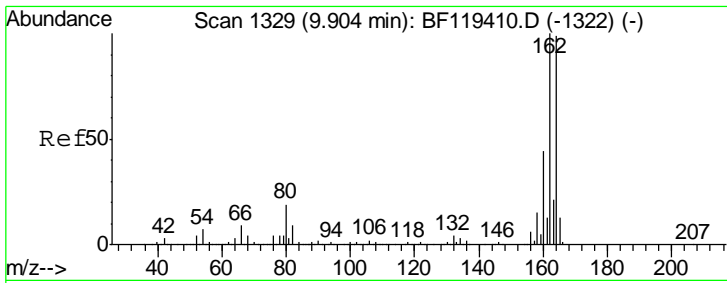
Tgt Ion	Resp	Lower	Upper
82	100		
128	47.1	35.8	53.8
54	62.4	53.4	80.0



#25
 Isophorone
 Concen: 3.903 ng
 RT: 7.40 min Scan# 903
 Delta R.T. -0.28 min
 Lab File: BF119523.D
 Acq: 26 Mar 2020 2:43

Tgt Ion	Resp	Lower	Upper
82	100		
95	0.0	5.4	8.2#
138	0.0	13.8	20.8#

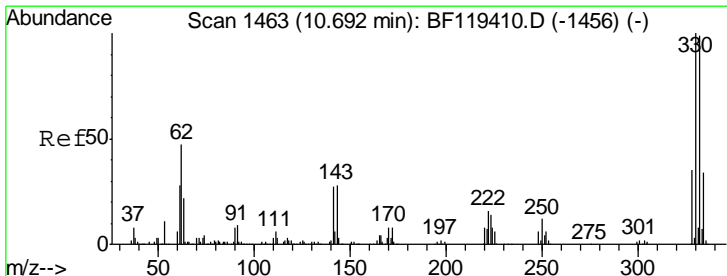
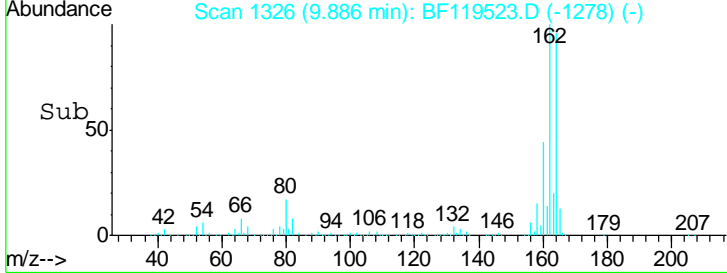
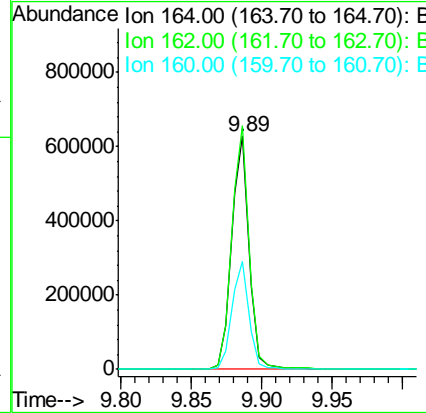
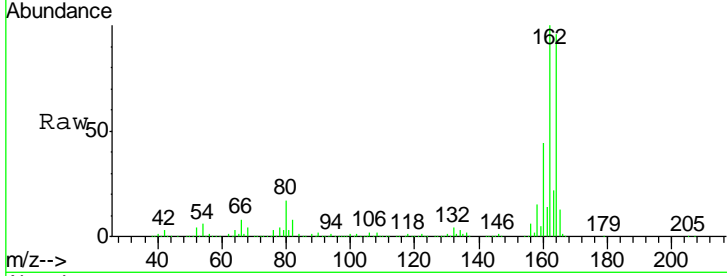




#39
 Acenaphthene-d10
 Concen: 20.000 ng
 RT: 9.89 min Scan# 1326
 Delta R.T. -0.02 min
 Lab File: BF119523.D
 Acq: 26 Mar 2020 2:43

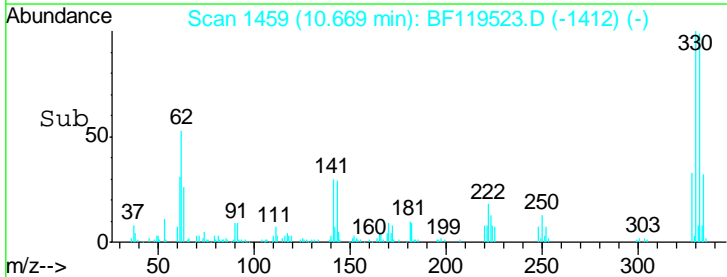
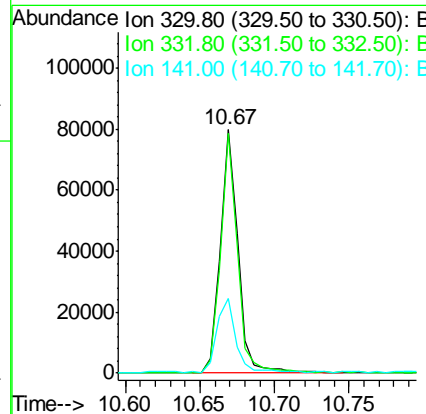
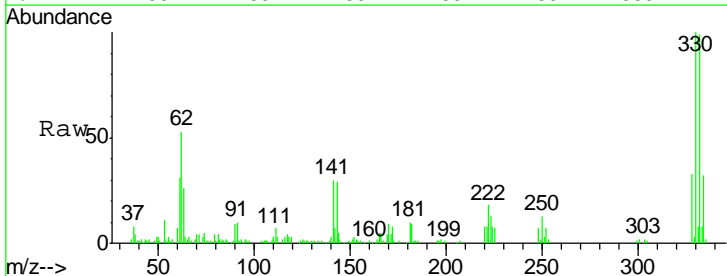
Instrument :
 BNA_F
 ClientSampled :
 GHD1-BC-IB-0-5

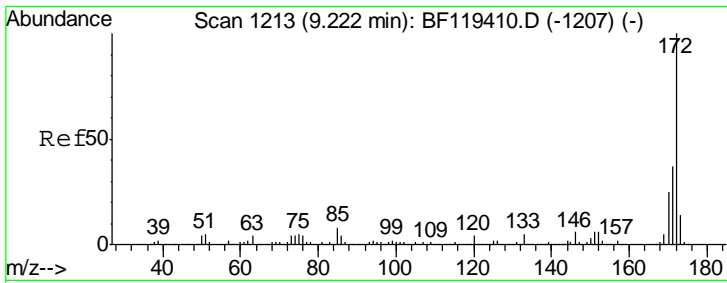
Tgt Ion	Resp	Lower	Upper
164	100		
162	104.5	80.7	121.1
160	46.2	35.5	53.3



#42
 2,4,6-Tribromophenol
 Concen: 11.893 ng
 RT: 10.67 min Scan# 1459
 Delta R.T. -0.02 min
 Lab File: BF119523.D
 Acq: 26 Mar 2020 2:43

Tgt Ion	Resp	Lower	Upper
330	100		
332	94.3	77.6	116.4
141	33.9	26.6	40.0

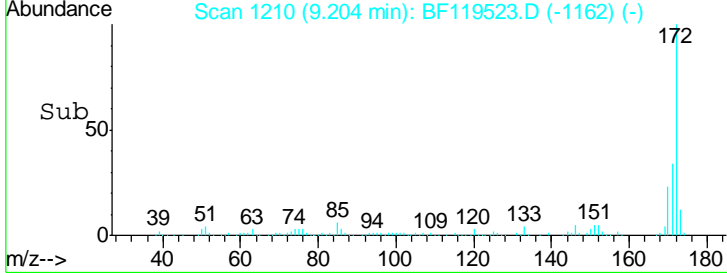
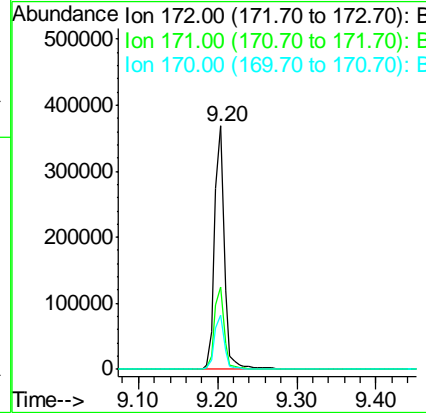
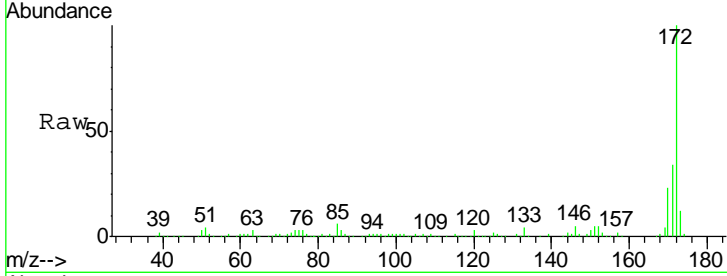




#45
 2-Fluorobiphenyl
 Concen: 8.718 ng
 RT: 9.20 min Scan# 1210
 Delta R.T. -0.02 min
 Lab File: BF119523.D
 Acq: 26 Mar 2020 2:43

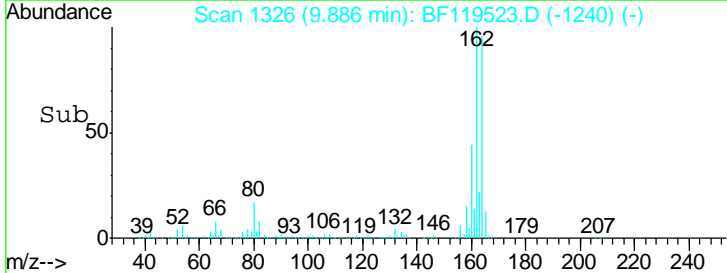
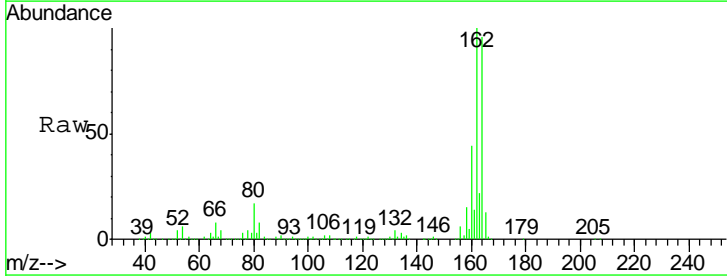
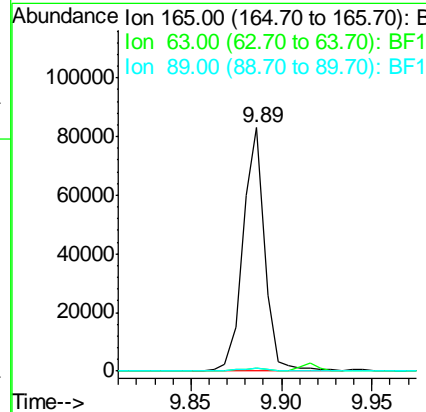
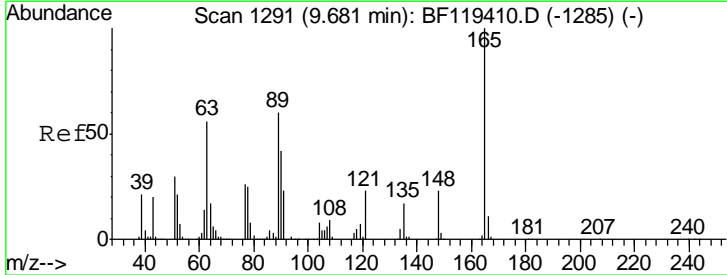
Instrument :
 BNA_F
ClientSampled :
 GHD1-BC-IB-0-5

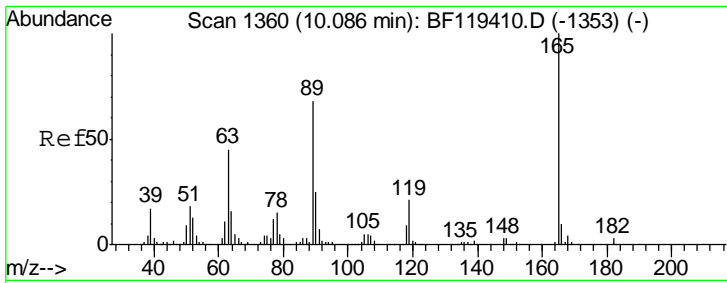
Tgt Ion	Resp	Lower	Upper
172	100		
171	34.1	29.9	44.9
170	22.5	20.1	30.1



#51
 2,6-Dinitrotoluene
 Concen: 8.417 ng
 RT: 9.89 min Scan# 1326
 Delta R.T. 0.21 min
 Lab File: BF119523.D
 Acq: 26 Mar 2020 2:43

Tgt Ion	Resp	Lower	Upper
165	100		
63	1.2	57.3	85.9#
89	1.0	47.8	71.8#

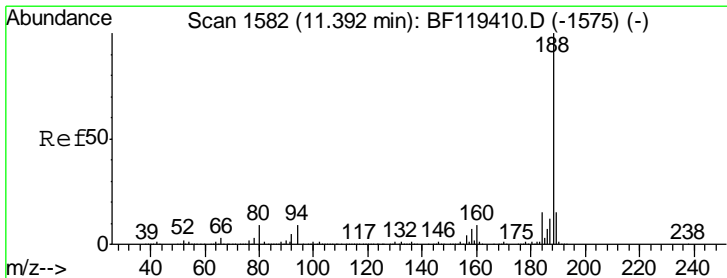
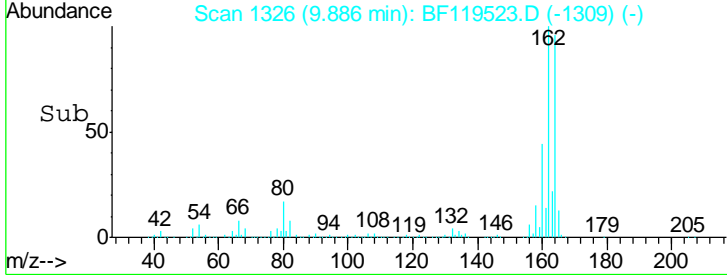
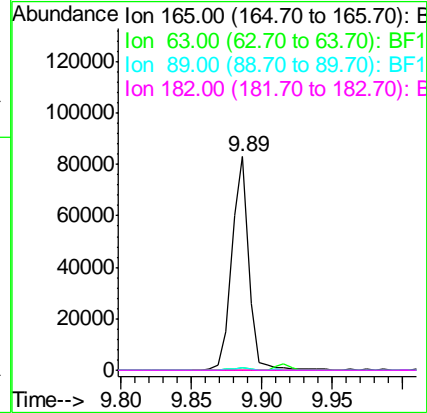
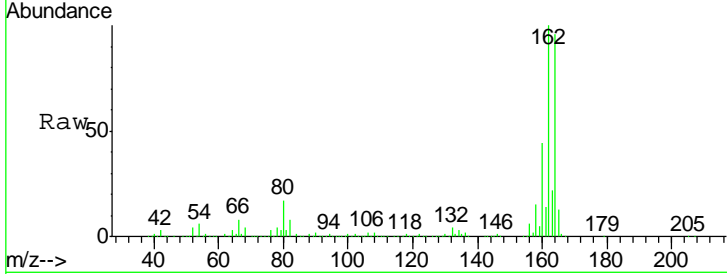




#57
 2,4-Dinitrotoluene
 Concen: 6.708 ng
 RT: 9.89 min Scan# 1326
 Delta R.T. -0.20 min
 Lab File: BF119523.D
 Acq: 26 Mar 2020 2:43

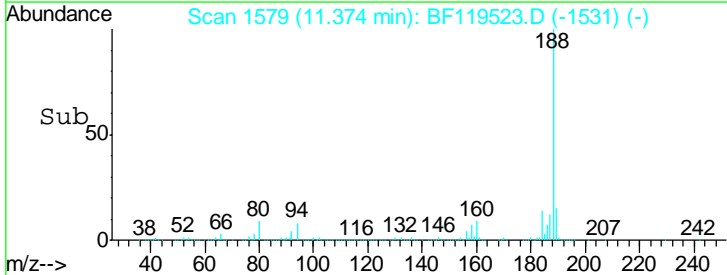
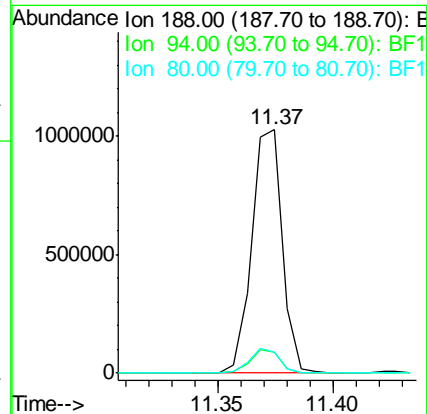
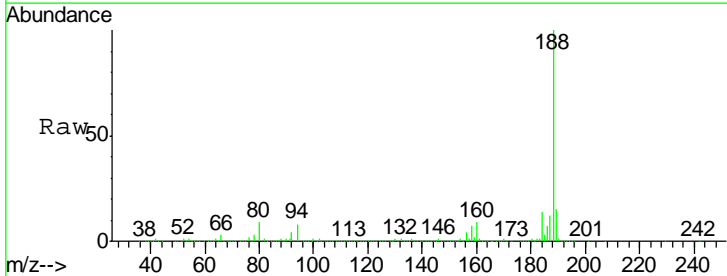
Instrument :
 BNA_F
 ClientSampled :
 GHD1-BC-IB-0-5

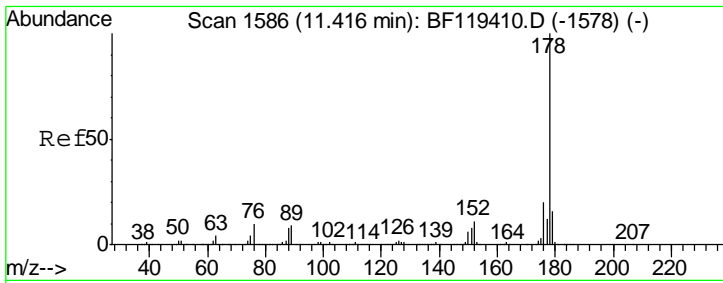
Tgt Ion	Resp	Lower	Upper
165	100		
63	1.2	36.2	54.4#
89	1.0	54.3	81.5#
182	0.0	2.0	3.0#



#64
 Phenanthrene-d10
 Concen: 20.000 ng
 RT: 11.37 min Scan# 1579
 Delta R.T. -0.02 min
 Lab File: BF119523.D
 Acq: 26 Mar 2020 2:43

Tgt Ion	Resp	Lower	Upper
188	100		
94	8.5	7.1	10.7
80	8.5	7.5	11.3

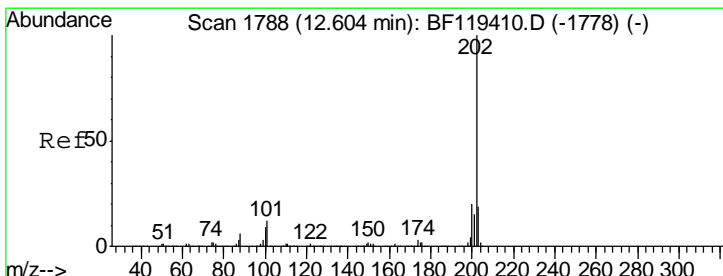
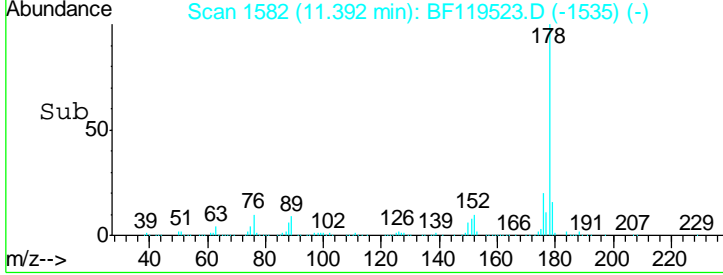
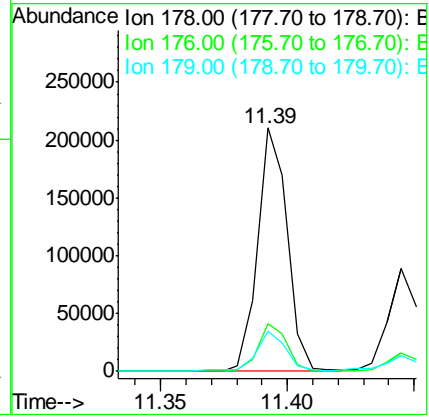
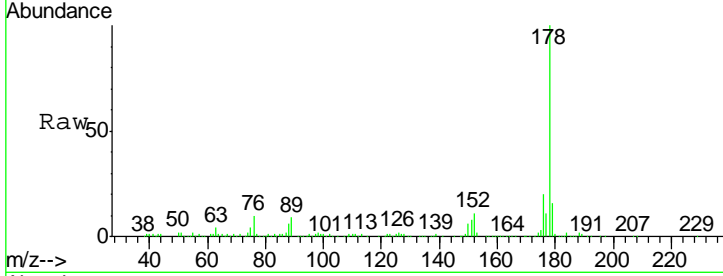




#71
 Phenanthrene
 Concen: 3.471 ng
 RT: 11.39 min Scan# 1582
 Delta R.T. -0.02 min
 Lab File: BF119523.D
 Acq: 26 Mar 2020 2:43

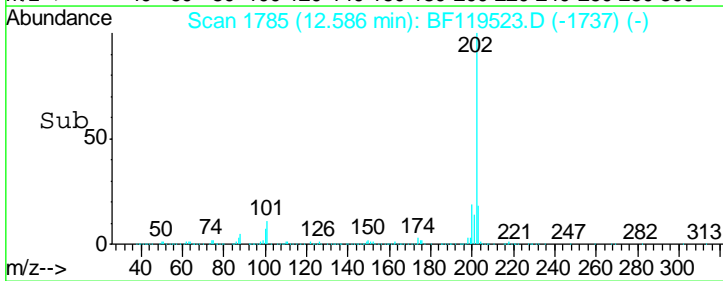
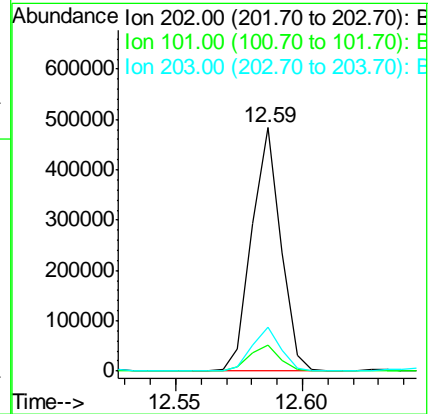
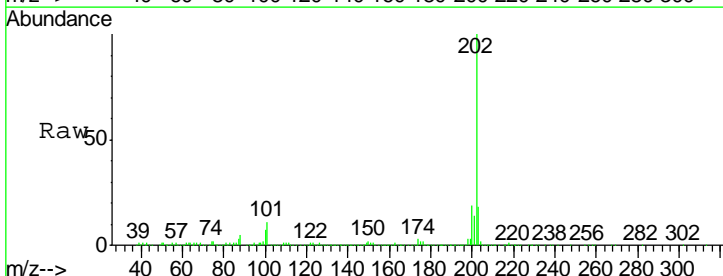
Instrument :
 BNA_F
 ClientSampled :
 GHD1-BC-IB-0-5

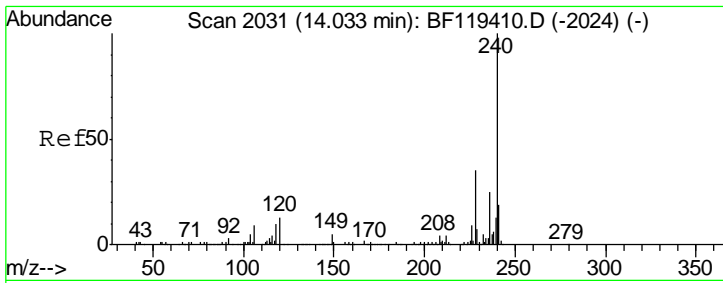
Tgt Ion	Resp	Lower	Upper
178	171286		
176	19.5	16.2	24.4
179	16.4	12.9	19.3



#75
 Fluoranthene
 Concen: 7.225 ng
 RT: 12.59 min Scan# 1785
 Delta R.T. -0.02 min
 Lab File: BF119523.D
 Acq: 26 Mar 2020 2:43

Tgt Ion	Resp	Lower	Upper
202	385821		
101	10.6	0.0	32.4
203	17.8	0.0	38.5

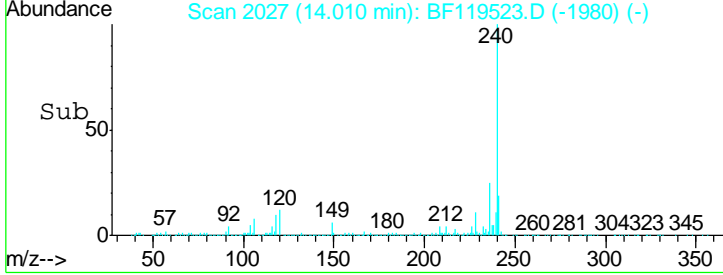
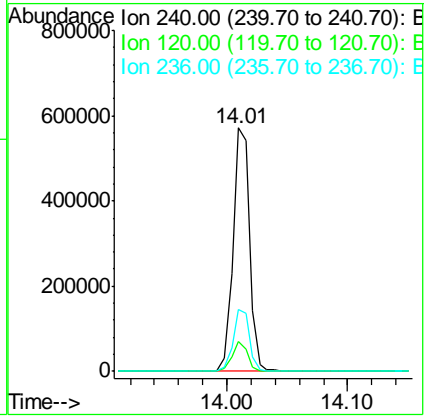
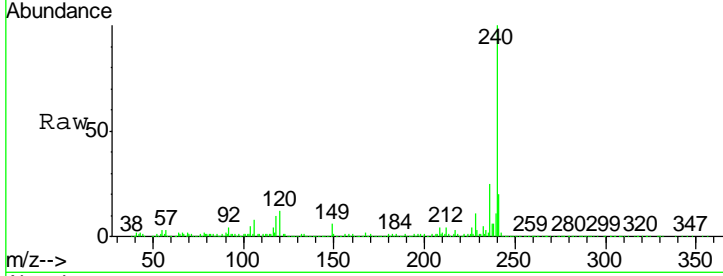




#76
 Chrysene-d12
 Concen: 20.000 ng
 RT: 14.01 min Scan# 2027
 Delta R.T. -0.02 min
 Lab File: BF119523.D
 Acq: 26 Mar 2020 2:43

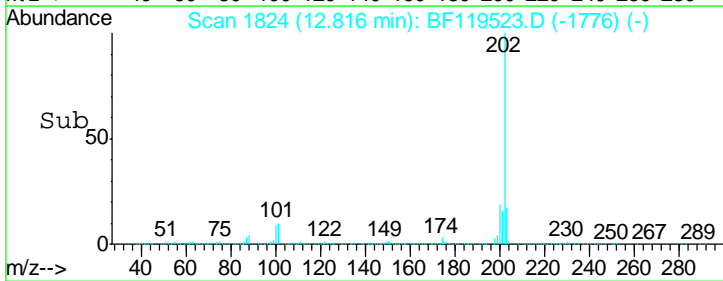
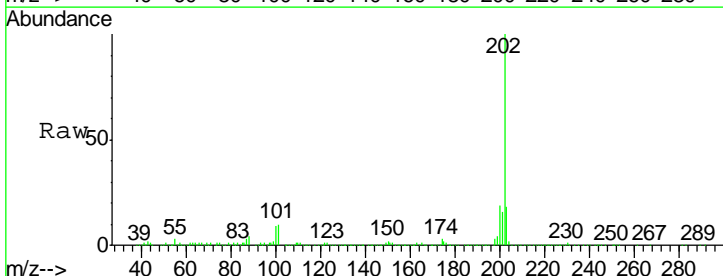
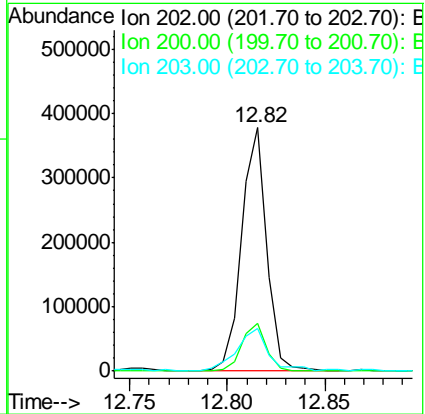
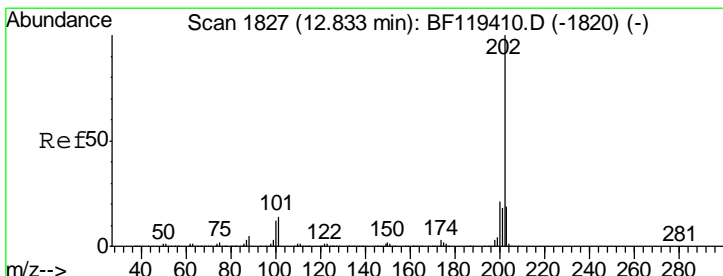
Instrument :
 BNA_F
ClientSampled :
 GHD1-BC-IB-0-5

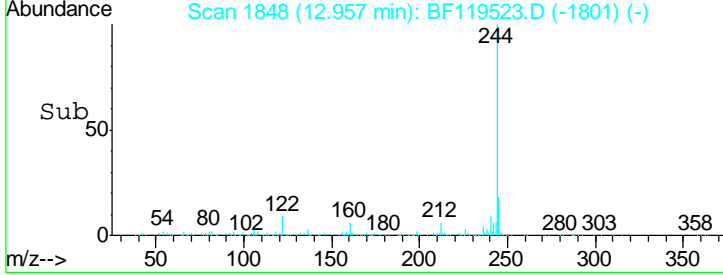
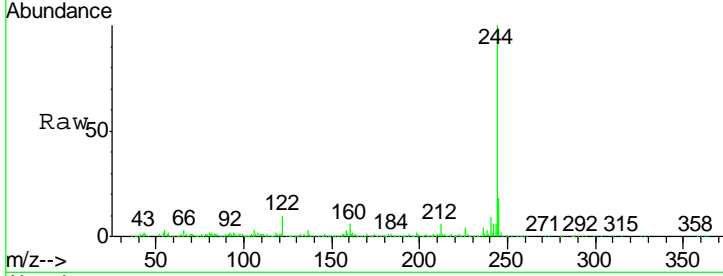
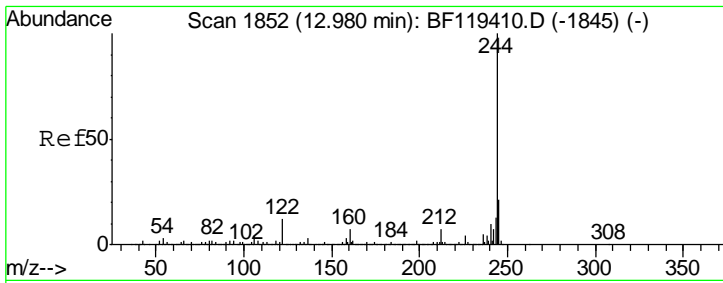
Tgt Ion	Resp	Lower	Upper
240	100		
120	12.4	10.2	15.4
236	25.4	20.4	30.6



#78
 Pyrene
 Concen: 7.419 ng
 RT: 12.82 min Scan# 1824
 Delta R.T. -0.02 min
 Lab File: BF119523.D
 Acq: 26 Mar 2020 2:43

Tgt Ion	Resp	Lower	Upper
202	100		
200	19.4	16.8	25.2
203	17.7	14.8	22.2

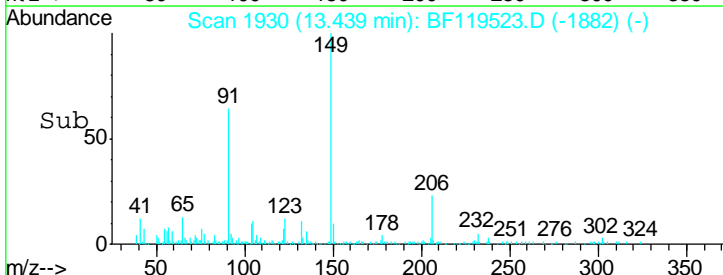
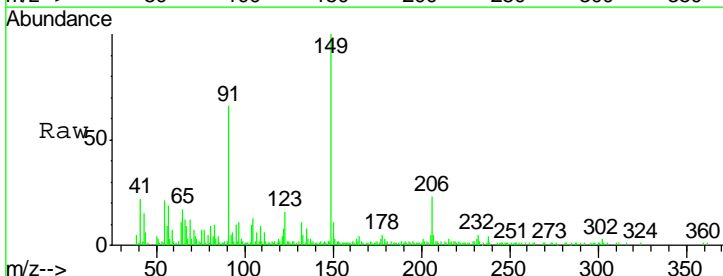
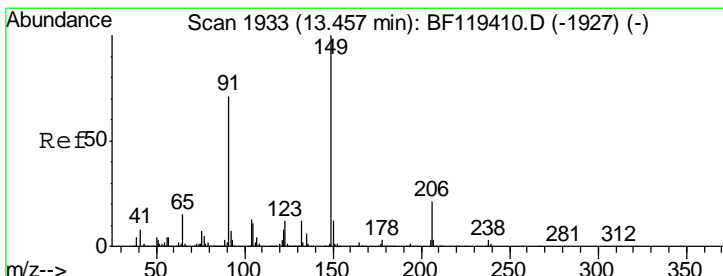
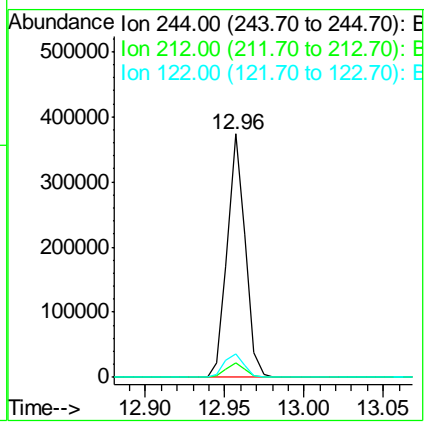




#79
 Terphenyl-d14
 Concen: 10.543 ng
 RT: 12.96 min Scan# 1848
 Delta R.T. -0.02 min
 Lab File: BF119523.D
 Acq: 26 Mar 2020 2:43

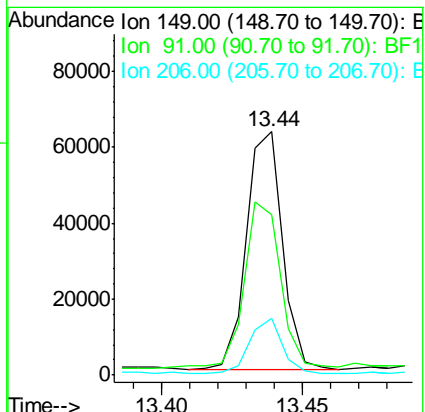
Instrument :
 BNA_F
ClientSampleId :
 GHD1-BC-IB-0-5

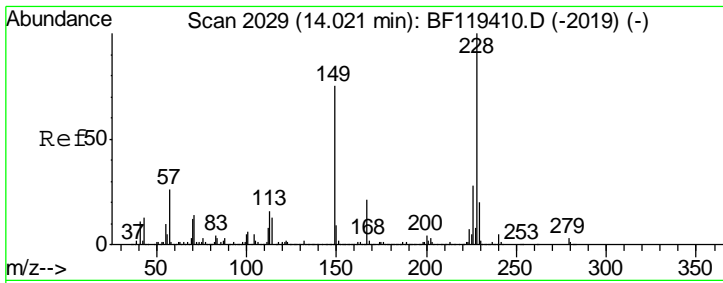
Tgt Ion	Resp	Lower	Upper
244	100		
212	6.2	5.7	8.5
122	9.8	9.8	14.8#



#80
 Butylbenzylphthalate
 Concen: 3.061 ng
 RT: 13.44 min Scan# 1930
 Delta R.T. -0.02 min
 Lab File: BF119523.D
 Acq: 26 Mar 2020 2:43

Tgt Ion	Resp	Lower	Upper
149	100		
91	65.6	57.0	85.6
206	23.1	16.4	24.6

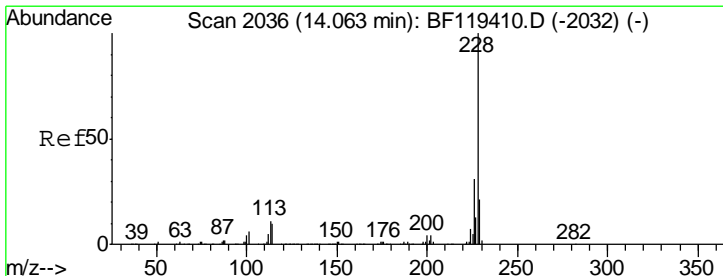
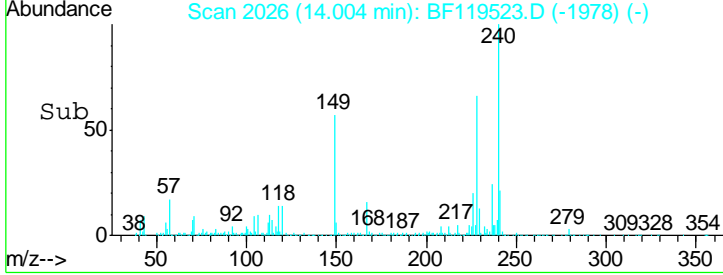
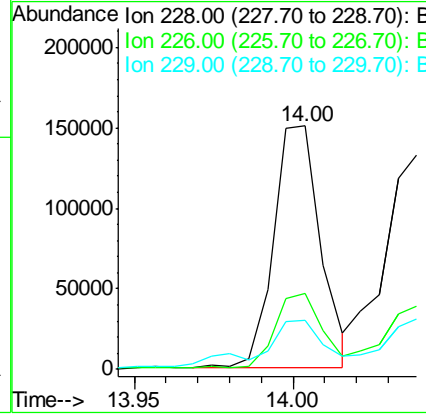
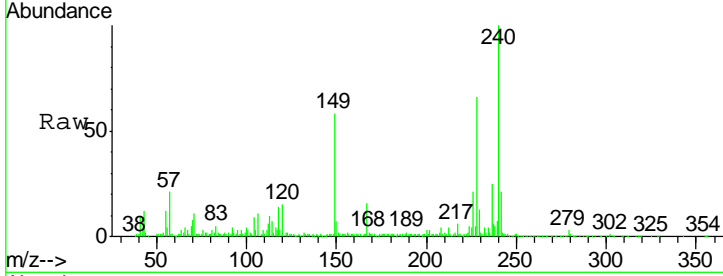




#81
 Benzo(a)anthracene
 Concen: 4.355 ng
 RT: 14.00 min Scan# 2026
 Delta R.T. -0.02 min
 Lab File: BF119523.D
 Acq: 26 Mar 2020 2:43

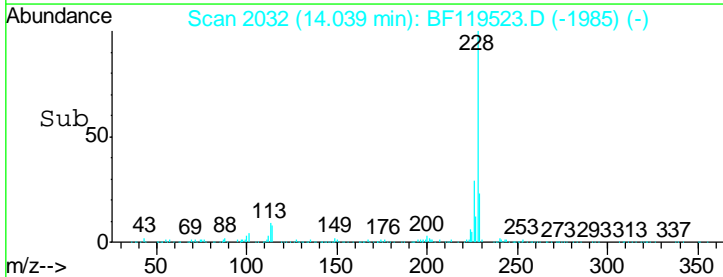
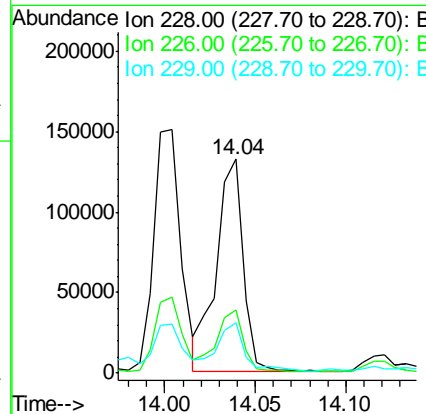
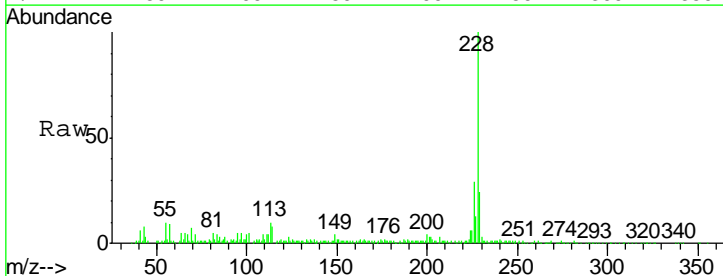
Instrument :
 BNA_F
 ClientSampleId :
 GHD1-BC-IB-0-5

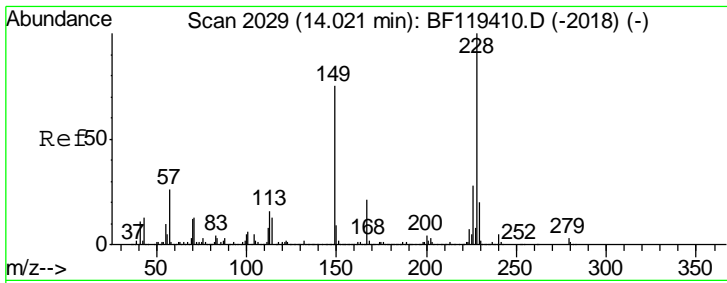
Tgt Ion	Resp	Lower	Upper
228	100		
226	31.3	22.3	33.5
229	20.4	16.3	24.5



#83
 Chrysene
 Concen: 3.715 ng
 RT: 14.04 min Scan# 2032
 Delta R.T. -0.02 min
 Lab File: BF119523.D
 Acq: 26 Mar 2020 2:43

Tgt Ion	Resp	Lower	Upper
228	100		
226	29.5	24.8	37.2
229	23.6	16.6	25.0

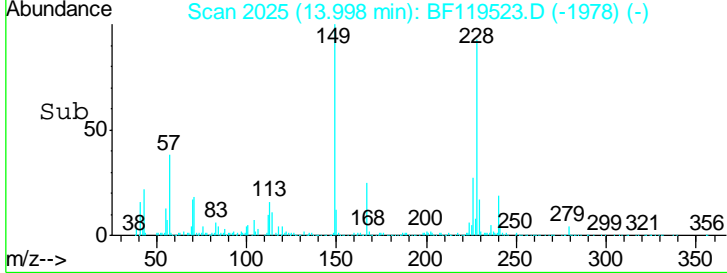
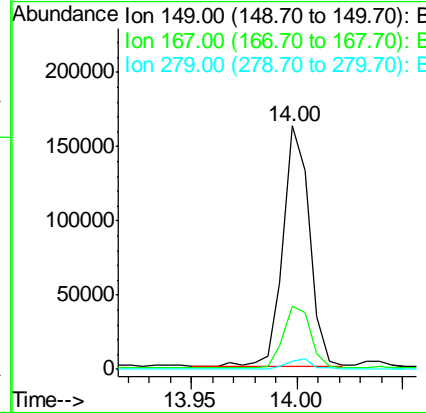
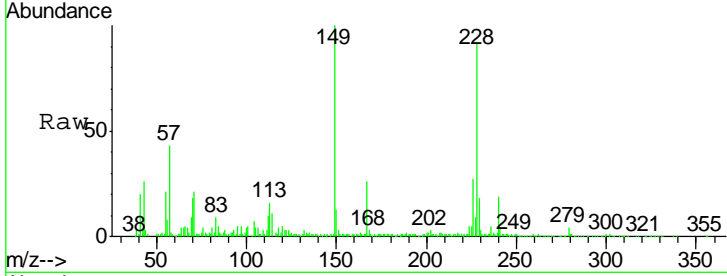




#84
 Bis(2-ethylhexyl)phthalate
 Concen: 6.579 ng
 RT: 14.00 min Scan# 2025
 Delta R.T. -0.02 min
 Lab File: BF119523.D
 Acq: 26 Mar 2020 2:43

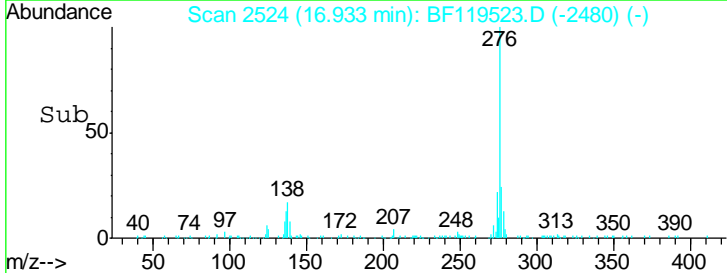
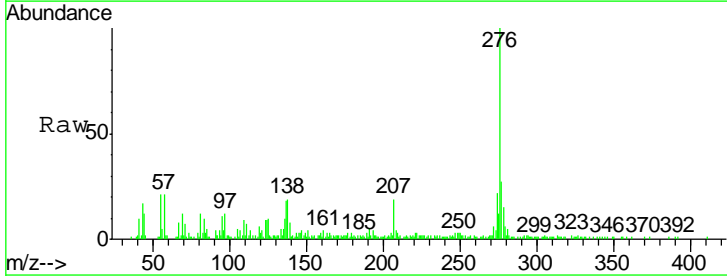
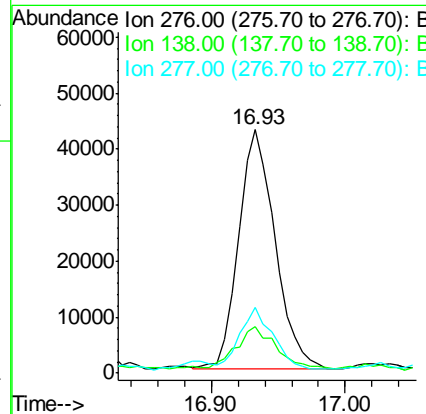
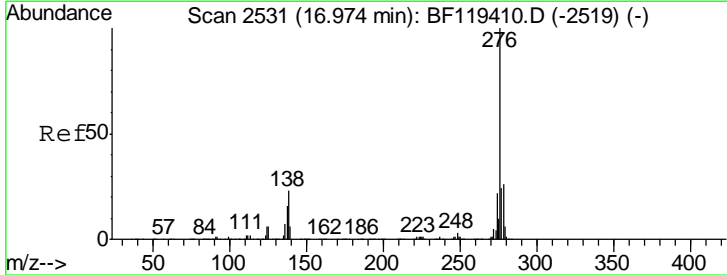
Instrument :
 BNA_F
ClientSampleId :
 GHD1-BC-IB-0-5

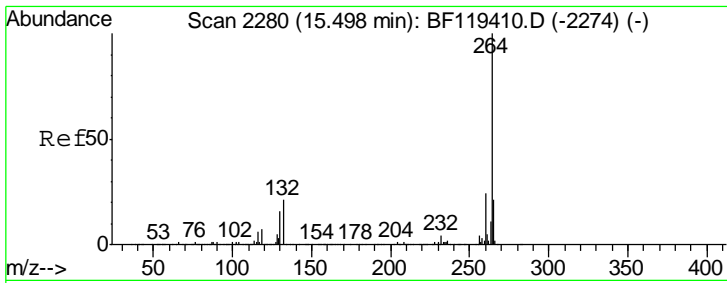
Tgt Ion	Resp	Lower	Upper
149	100		
167	25.7	22.0	33.0
279	3.5	3.2	4.8



#86
 Indeno(1,2,3-cd)pyrene
 Concen: 2.339 ng
 RT: 16.93 min Scan# 2524
 Delta R.T. -0.04 min
 Lab File: BF119523.D
 Acq: 26 Mar 2020 2:43

Tgt Ion	Resp	Lower	Upper
276	100		
138	20.5	21.3	31.9#
277	23.6	20.2	30.2

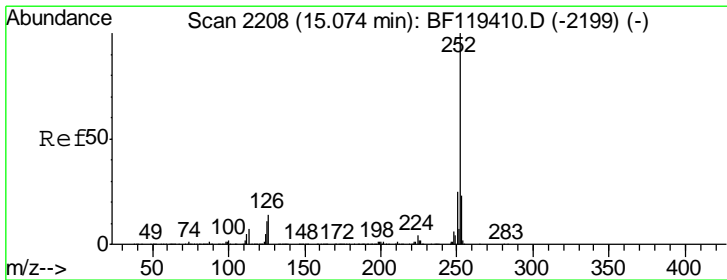
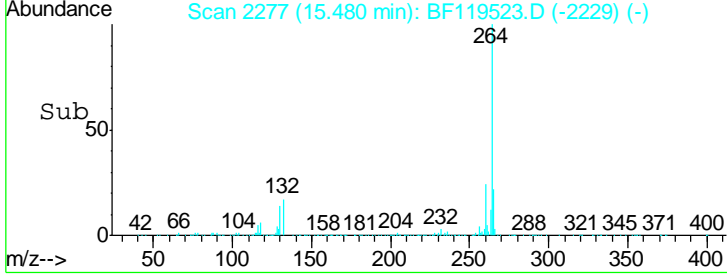
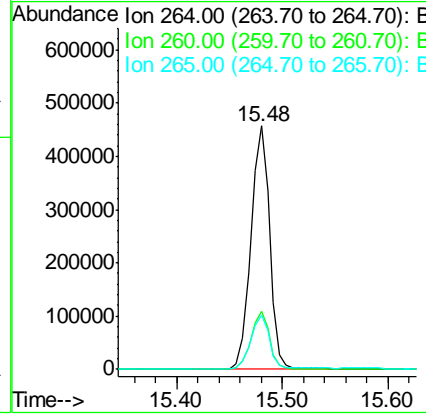
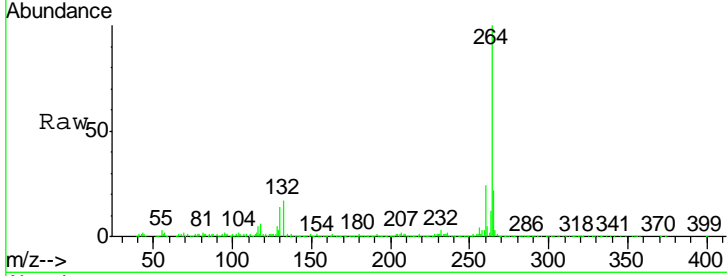




#87
 Perylene-d12
 Concen: 20.000 ng
 RT: 15.48 min Scan# 2277
 Delta R.T. -0.02 min
 Lab File: BF119523.D
 Acq: 26 Mar 2020 2:43

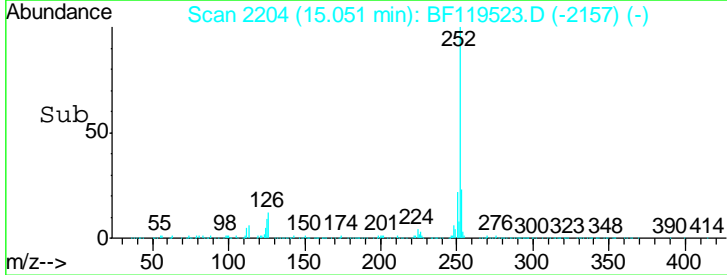
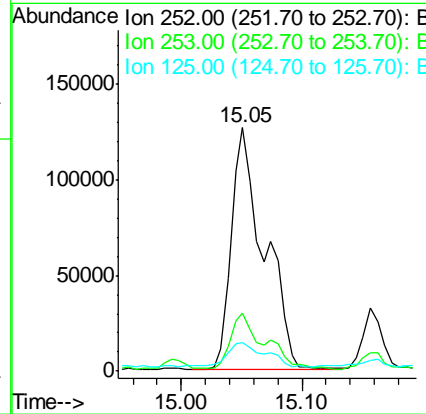
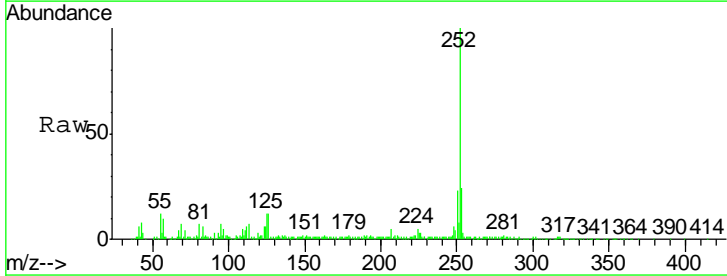
Instrument :
 BNA_F
ClientSampleId :
 GHD1-BC-IB-0-5

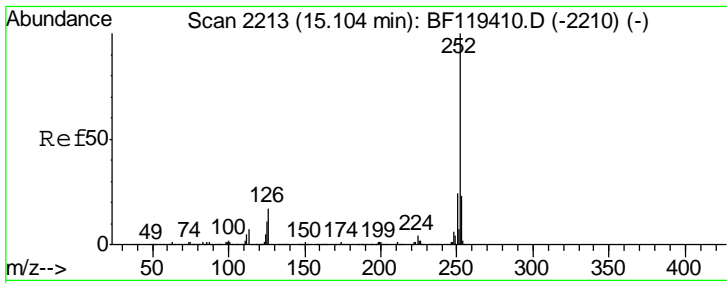
Tgt Ion	Resp	Lower	Upper
264	100		
260	24.0	19.2	28.8
265	22.4	16.9	25.3



#88
 Benzo(b)fluoranthene
 Concen: 6.300 ng
 RT: 15.05 min Scan# 2204
 Delta R.T. -0.02 min
 Lab File: BF119523.D
 Acq: 26 Mar 2020 2:43

Tgt Ion	Resp	Lower	Upper
252	100		
253	23.7	18.2	27.4
125	11.5	8.8	13.2

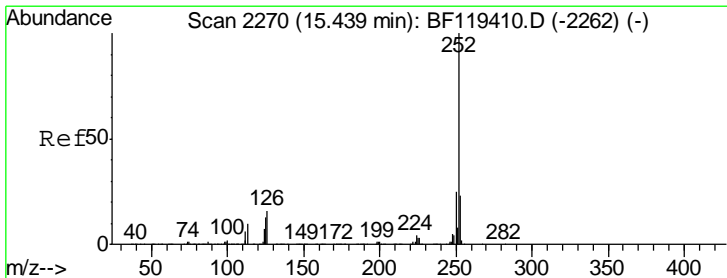
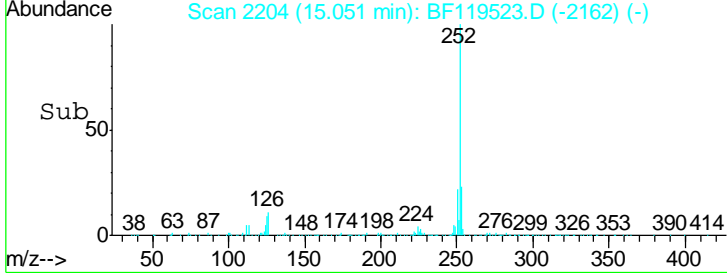
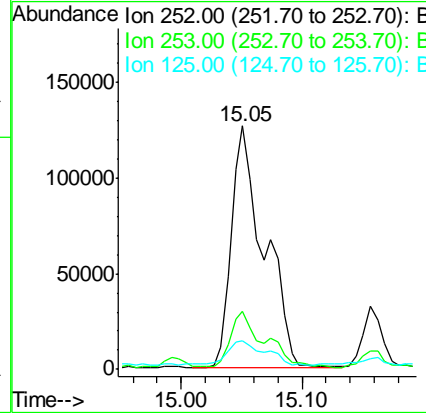
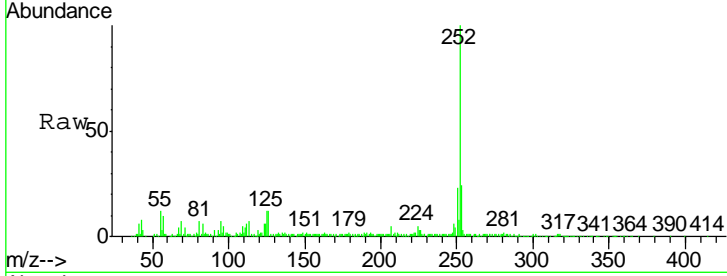




#89
 Benzo(k)fluoranthene
 Concen: 6.613 ng
 RT: 15.05 min Scan# 2204
 Delta R.T. -0.05 min
 Lab File: BF119523.D
 Acq: 26 Mar 2020 2:43

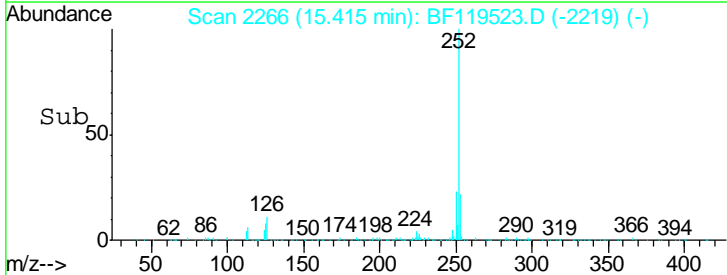
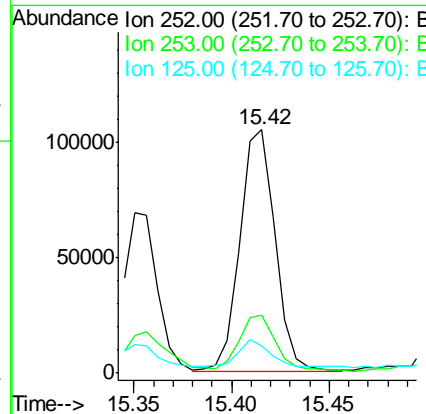
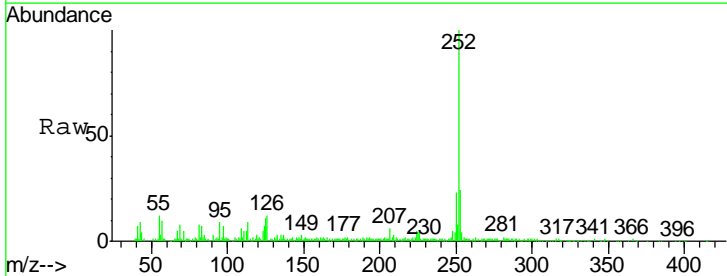
Instrument :
 BNA_F
 ClientSampled :
 GHD1-BC-IB-0-5

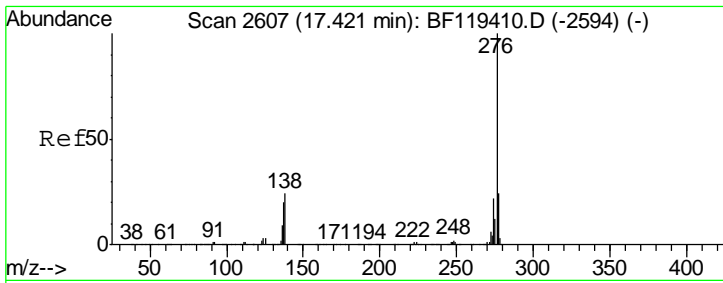
Tgt Ion	Resp	Lower	Upper
252	100		
253	23.7	18.2	27.4
125	11.5	9.0	13.4



#90
 Benzo(a)pyrene
 Concen: 3.826 ng
 RT: 15.42 min Scan# 2266
 Delta R.T. -0.02 min
 Lab File: BF119523.D
 Acq: 26 Mar 2020 2:43

Tgt Ion	Resp	Lower	Upper
252	100		
253	23.7	18.2	27.4
125	11.1	10.2	15.2





#92
 Benzo(g,h,i)perylene
 Concen: 2.457 ng
 RT: 17.37 min Scan# 2599
 Delta R.T. -0.05 min
 Lab File: BF119523.D
 Acq: 26 Mar 2020 2:43

Instrument :
 BNA_F
 ClientSampleId :
 GHD1-BC-IB-0-5

Tgt Ion	Ion	Ratio	Lower	Upper
276	100			
277	29.0	18.8	28.2	
138	26.4	19.1	28.7	

