

Data Path : Z:\HPCHEM1\BNA F\DATA\BF032618\  
 Data File : BF103921.D  
 Acq On : 26 Mar 2018 13:05  
 Operator : JU/SJ  
 Sample : J1994-03  
 Misc :  
 ALS Vial : 10 Sample Multiplier: 1

Instrument :  
 BNA\_F  
 ClientSampleId :  
 PR-MW-02-031918

Integration Parameters: rteint.p  
 Integrator: RTE  
 Smoothing : ON Filtering: 5  
 Sampling : 1 Min Area: 3 % of largest Peak  
 Start Thrs: 0.2 Max Peaks: 100  
 Stop Thrs : 0 Peak Location: TOP

If leading or trailing edge < 100 prefer < Baseline drop else tangent >  
 Peak separation: 5

Method : Z:\HPCHEM1\BNA F\METHODS\8270-BF031518.M  
 Title : ASP BNA STANDARDS FOR 5 POINT CALIBRATION

Signal : TIC

peak #	R.T. min	first scan	max scan	last scan	PK TY	peak height	corr. area	corr. % max.	% of total
1	2.298	31	36	43	rVB	364399	467791	10.64%	1.305%
2	4.763	449	455	460	rBV2	63533	75541	1.72%	0.211%
3	5.204	527	530	537	rBV	150106	169303	3.85%	0.472%
4	5.322	545	550	556	rVB4	42580	48151	1.10%	0.134%
5	5.598	592	597	600	rBV	1693689	1676096	38.14%	4.677%
6	5.775	619	627	629	rBV3	46302	48352	1.10%	0.135%
7	5.922	649	652	657	rVB	52762	49442	1.12%	0.138%
8	5.998	661	665	669	rBV2	63133	64260	1.46%	0.179%
9	6.304	714	717	720	rBV	59455	54928	1.25%	0.153%
10	6.333	720	722	726	rVB	55078	44112	1.00%	0.123%
11	6.592	762	766	773	rBV	1187460	1059722	24.11%	2.957%
12	6.657	773	777	782	rVB	43052	47489	1.08%	0.133%
13	6.745	787	792	795	rBV	3275032	3054562	69.50%	8.523%
14	6.975	827	831	834	rBV	946875	768575	17.49%	2.145%
15	7.028	837	840	845	rVB	262512	201853	4.59%	0.563%
16	7.133	853	858	860	rBV	3098162	2851002	64.87%	7.955%
17	7.151	860	861	869	rVB2	322264	292107	6.65%	0.815%
18	7.216	869	872	874	rBV	201980	165690	3.77%	0.462%
19	7.286	880	884	885	rBV	78090	63052	1.43%	0.176%
20	7.304	885	887	891	rVB	105360	92112	2.10%	0.257%
21	7.369	894	898	901	rBV2	56480	64439	1.47%	0.180%
22	7.504	917	921	922	rBV	135477	126073	2.87%	0.352%
23	7.539	922	927	930	rVV	2637521	2645630	60.20%	7.382%
24	7.604	934	938	943	rVB3	110278	132194	3.01%	0.369%
25	7.657	943	947	952	rBV3	106311	117059	2.66%	0.327%
26	7.716	952	957	959	rBV3	35137	44868	1.02%	0.125%
27	7.851	977	980	984	rVB	65545	65334	1.49%	0.182%
28	7.898	984	988	991	rBV2	143670	153759	3.50%	0.429%
29	7.933	991	994	997	rVB4	59589	75631	1.72%	0.211%
30	7.986	1000	1003	1007	rBV	788931	718755	16.35%	2.006%
31	8.063	1012	1016	1018	rBV3	38644	48043	1.09%	0.134%
32	8.092	1018	1021	1023	rVV2	66592	56607	1.29%	0.158%
33	8.210	1033	1041	1043	rBV6	81658	146580	3.34%	0.409%
34	8.257	1043	1049	1053	rVV	1270234	1323167	30.11%	3.692%

Data Path : Z:\HPCHEM1\BNA F\DATA\BF032618\  
 Data File : BF103921.D  
 Acq On : 26 Mar 2018 13:05  
 Operator : JU/SJ  
 Sample : J1994-03  
 Misc :  
 ALS Vial : 10 Sample Multiplier: 1

Instrument :  
 BNA\_F  
 ClientSampleId :  
 PR-MW-02-031918

Integration Parameters: rteint.p  
 Integrator: RTE  
 Smoothing : ON  
 Sampling : 1  
 Start Thrs: 0.2  
 Stop Thrs : 0  
 Filtering: 5  
 Min Area: 3 % of largest Peak  
 Max Peaks: 100  
 Peak Location: TOP

If leading or trailing edge < 100 prefer < Baseline drop else tangent >  
 Peak separation: 5

Method : Z:\HPCHEM1\BNA F\METHODS\8270-BF031518.M  
 Title : ASP BNA STANDARDS FOR 5 POINT CALIBRATION

35	8.298	1053	1056	1059	rVB2	193280	174848	3.98%	0.488%
36	8.375	1065	1069	1071	rBV2	58752	60719	1.38%	0.169%
37	8.404	1071	1074	1076	rBV	89743	72910	1.66%	0.203%
38	8.451	1079	1082	1087	rVB	129964	126186	2.87%	0.352%
39	8.510	1087	1092	1094	rBV2	490295	531948	12.10%	1.484%
40	8.633	1110	1113	1118	rVB2	91318	89976	2.05%	0.251%
41	8.680	1118	1121	1123	rBV2	46545	46632	1.06%	0.130%
42	8.716	1125	1127	1131	rVV2	123784	127780	2.91%	0.357%
43	8.757	1131	1134	1139	rVV4	161570	261282	5.95%	0.729%
44	8.810	1139	1143	1145	rVV2	75356	89592	2.04%	0.250%
45	8.845	1145	1149	1153	rVV4	87338	142420	3.24%	0.397%
46	8.916	1156	1161	1163	rVV2	214060	227951	5.19%	0.636%
47	8.939	1163	1165	1168	rVB2	64493	57893	1.32%	0.162%
48	9.027	1177	1180	1182	rBV2	51778	54830	1.25%	0.153%
49	9.074	1185	1188	1190	rVV4	85686	78065	1.78%	0.218%
50	9.145	1196	1200	1202	rBV2	40330	47058	1.07%	0.131%
51	9.192	1202	1208	1210	rVV3	80929	103514	2.36%	0.289%
52	9.286	1218	1224	1227	rBV4	157934	224526	5.11%	0.626%
53	9.333	1227	1232	1235	rBV	4201220	4115928	93.65%	11.485%
54	9.480	1251	1257	1258	rBV3	62662	74832	1.70%	0.209%
55	9.716	1294	1297	1302	rBV	150418	149807	3.41%	0.418%
56	9.827	1313	1316	1321	rVB3	37052	45777	1.04%	0.128%
57	9.927	1330	1333	1337	rVB	69262	58322	1.33%	0.163%
58	10.016	1344	1348	1359	rVB	1375045	1241913	28.26%	3.465%
59	10.427	1415	1418	1421	rBV2	81424	67504	1.54%	0.188%
60	10.810	1478	1483	1487	rBV	2613990	2710148	61.66%	7.562%
61	10.904	1496	1499	1508	rVB	58210	74571	1.70%	0.208%
62	11.510	1598	1602	1605	rBV	1415490	1197908	27.26%	3.342%
63	13.098	1867	1872	1875	rBV	3980521	4394970	100.00%	12.263%
64	13.974	2018	2021	2030	rBV	215471	219672	5.00%	0.613%
65	14.162	2049	2053	2060	rBV	1235352	1087174	24.74%	3.034%
66	15.709	2310	2316	2325	rBV	633951	869926	19.79%	2.427%

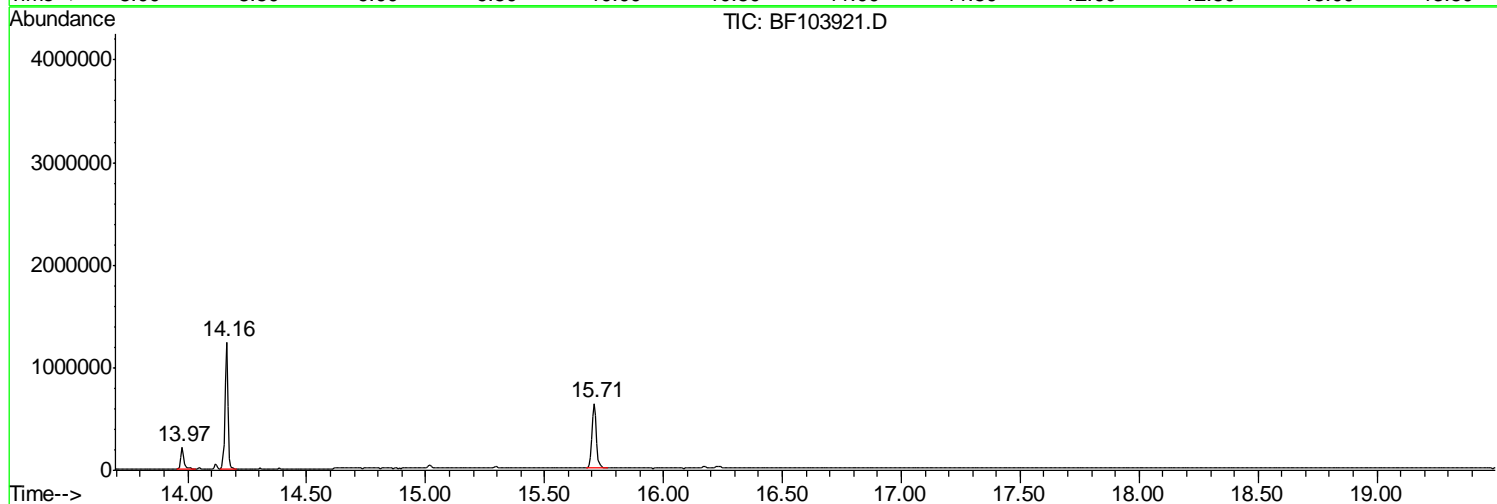
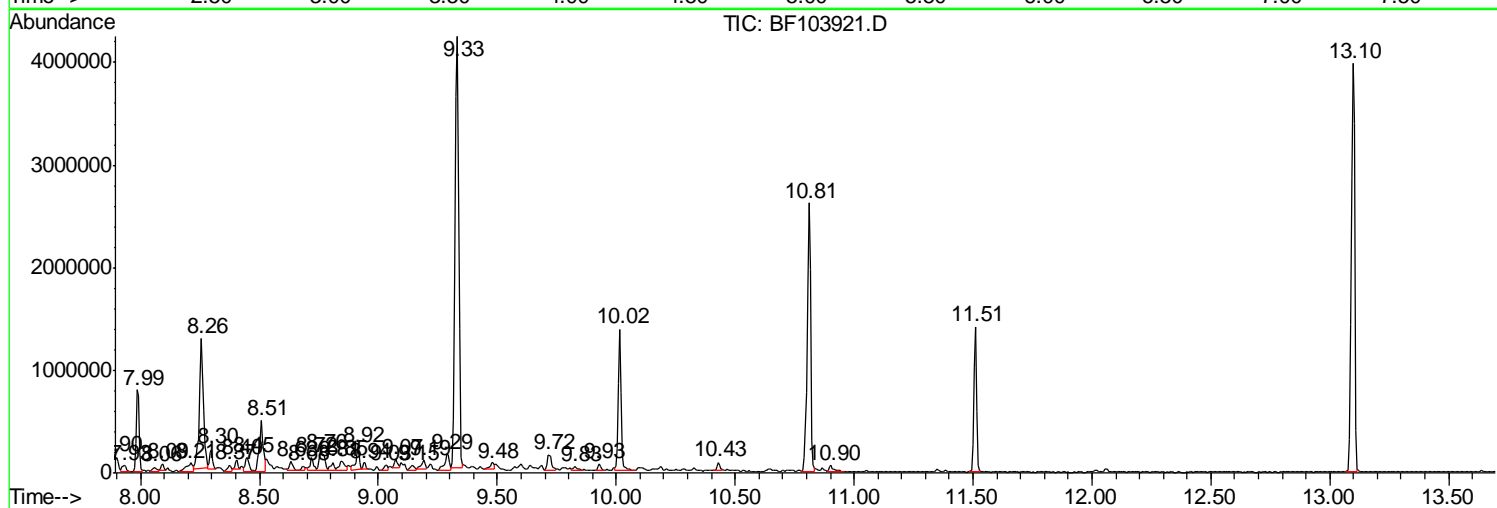
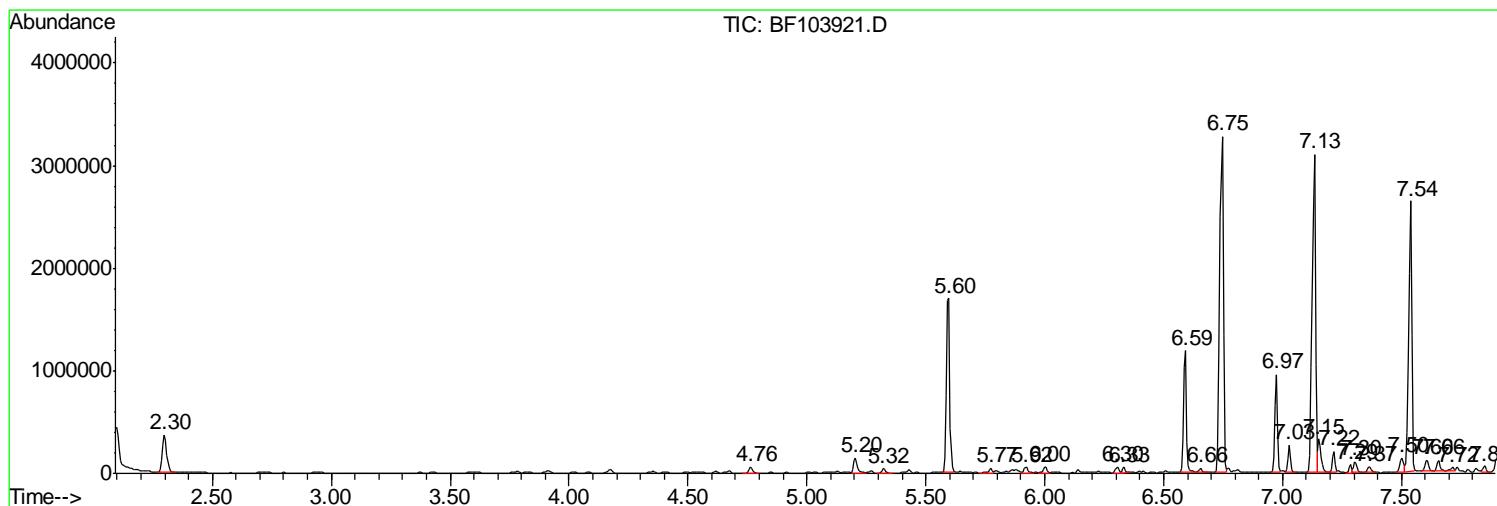
Sum of corrected areas: 35838861

Data Path : Z:\HPCHEM1\BNA F\DATA\BF032618\  
 Data File : BF103921.D  
 Acq On : 26 Mar 2018 13:05  
 Operator : JU/SJ  
 Sample : J1994-03  
 Misc :  
 ALS Vial : 10 Sample Multiplier: 1

Instrument :  
 BNA\_F  
 Client Sampled :  
 PR-MW-02-031918

Quant Method : Z:\HPCHEM1\BNA F\METHODS\8270-BF031518.M  
 Quant Title : ASP BNA STANDARDS FOR 5 POINT CALIBRATION

TIC Library : C:\DATABASE\NIST11.L  
 TIC Integration Parameters: LSCINT.P



Data Path : Z:\HPCHEM1\BNA F\DATA\BF032618\  
 Data File : BF103921.D  
 Acq On : 26 Mar 2018 13:05  
 Operator : JU/SJ  
 Sample : J1994-03  
 Misc :  
 ALS Vial : 10 Sample Multiplier: 1

Instrument :  
 BNA\_F  
 ClientSampleID :  
 PR-MW-02-031918

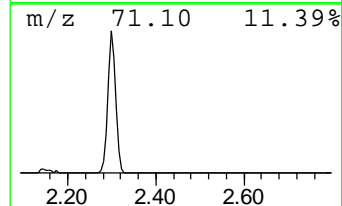
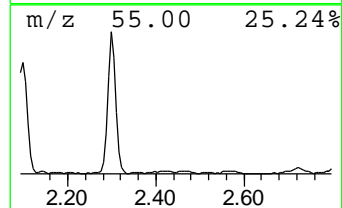
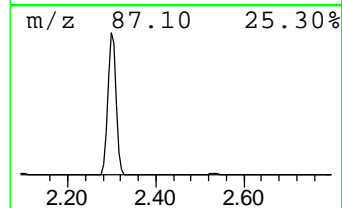
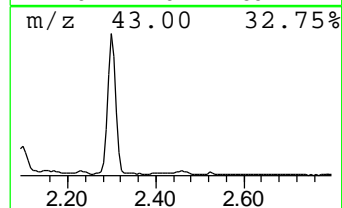
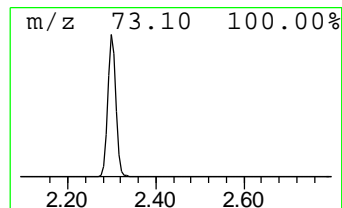
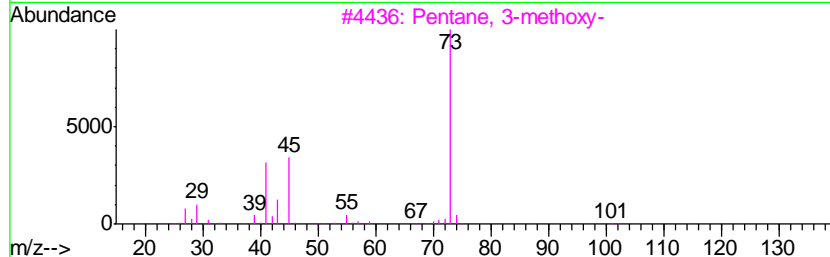
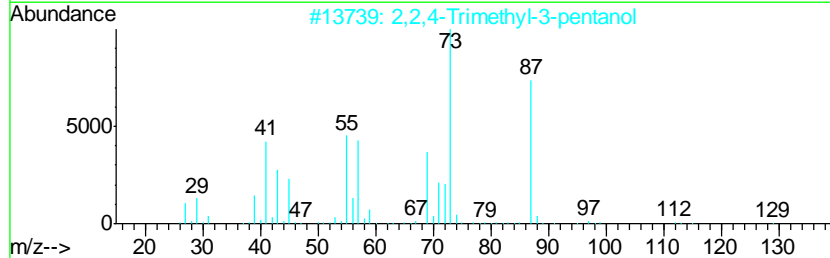
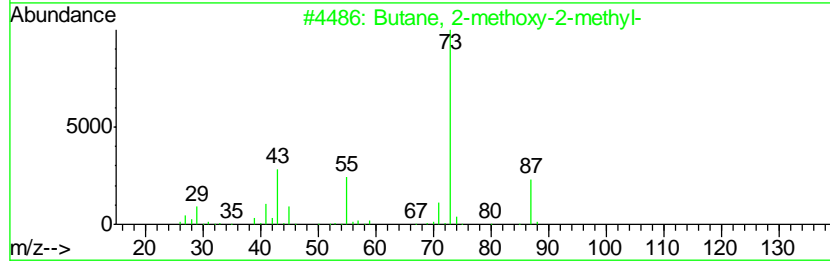
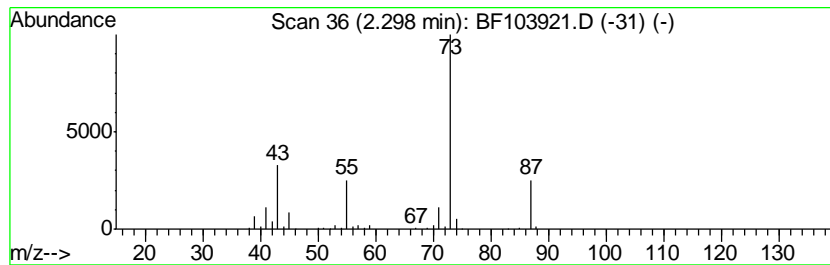
Quant Method : Z:\HPCHEM1\BNA F\METHODS\8270-BF031518.M  
 Quant Title : ASP BNA STANDARDS FOR 5 POINT CALIBRATION

TIC Library : C:\DATABASE\NIST11.L  
 TIC Integration Parameters: LSCINT.P

\*\*\*\*\*  
 Peak Number 1 Butane, 2-methoxy-2-methyl- Concentration Rank 3

R.T.	EstConc	Area	Relative to ISTD	R.T.
2.30	12.17 ng	467791	1,4-Dichlorobenzene-d4	6.97

Hit#	of	Tentative ID	MW	MolForm	CAS#	Qual
1	5	Butane, 2-methoxy-2-methyl-	102	C6H14O	000994-05-8	78
2		2,2,4-Trimethyl-3-pentanol	130	C8H18O	005162-48-1	39
3		Pentane, 3-methoxy-	102	C6H14O	036839-67-5	23
4		Silane, tetramethyl-	88	C4H12Si	000075-76-3	17
5		Acetamide, N-ethyl-	87	C4H9NO	000625-50-3	9



Data Path : Z:\HPCHEM1\BNA F\DATA\BF032618\  
 Data File : BF103921.D  
 Acq On : 26 Mar 2018 13:05  
 Operator : JU/SJ  
 Sample : J1994-03  
 Misc :  
 ALS Vial : 10 Sample Multiplier: 1

Instrument :  
 BNA\_F  
 ClientSampled :  
 PR-MW-02-031918

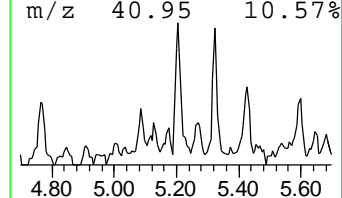
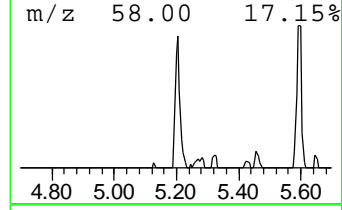
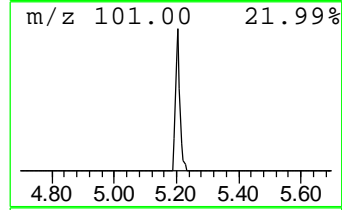
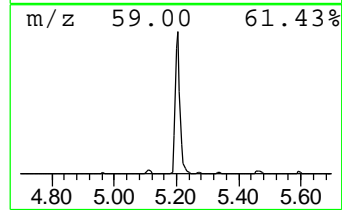
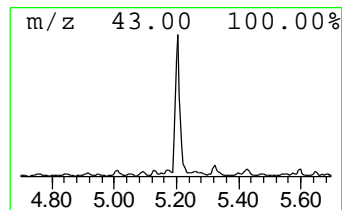
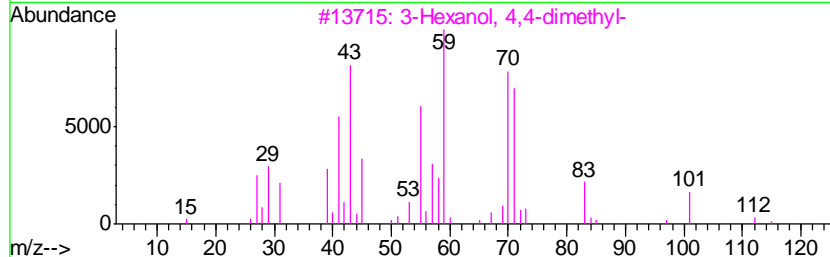
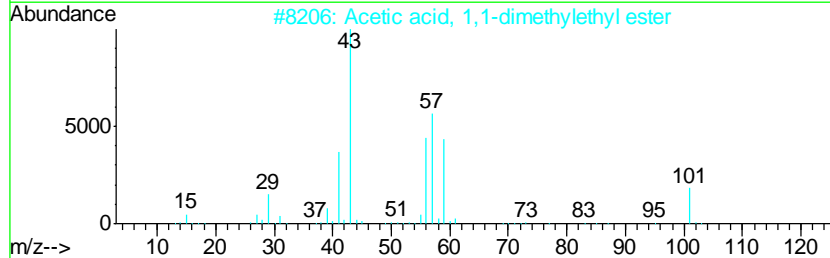
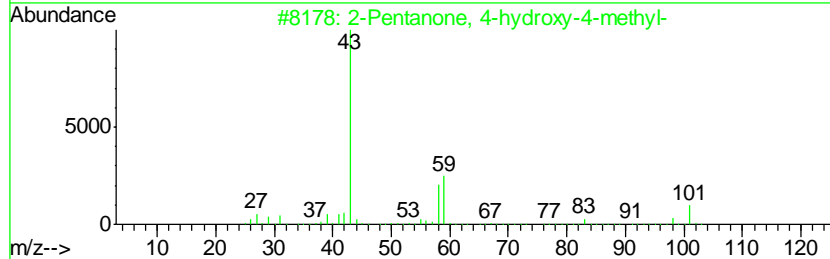
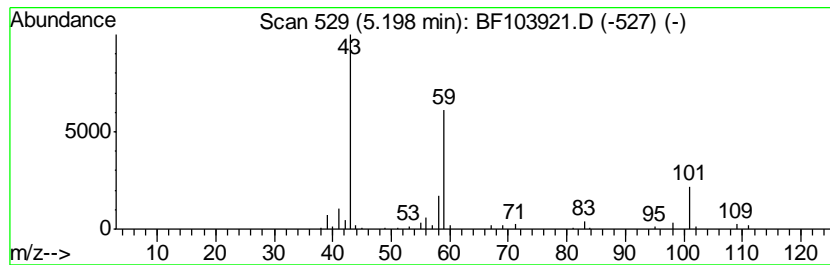
Quant Method : Z:\HPCHEM1\BNA F\METHODS\8270-BF031518.M  
 Quant Title : ASP BNA STANDARDS FOR 5 POINT CALIBRATION

TIC Library : C:\DATABASE\NIST11.L  
 TIC Integration Parameters: LSCINT.P

\*\*\*\*\*  
 Peak Number 2 unknown5.20 Concentration Rank 8

R.T.	EstConc	Area	Relative to ISTD	R.T.
5.20	4.41 ng	169303	1,4-Dichlorobenzene-d4	6.97

Hit#	of	Tentative ID	MW	MolForm	CAS#	Qual
1	5	2-Pentanone, 4-hydroxy-4-methyl-	116	C6H12O2	000123-42-2	42
2		Acetic acid, 1,1-dimethylethyl e...	116	C6H12O2	000540-88-5	36
3		3-Hexanol, 4,4-dimethyl-	130	C8H18O	019550-09-5	25
4		Methyl 16-methoxyheptadecanoate	314	C19H38O3	1000110-18-2	16
5		3-Hydroxy-3-methyl-2-butanone	102	C5H10O2	000115-22-0	16



Data Path : Z:\HPCHEM1\BNA F\DATA\BF032618\  
 Data File : BF103921.D  
 Acq On : 26 Mar 2018 13:05  
 Operator : JU/SJ  
 Sample : J1994-03  
 Misc :  
 ALS Vial : 10 Sample Multiplier: 1

Instrument :  
 BNA\_F  
 ClientSampleID :  
 PR-MW-02-031918

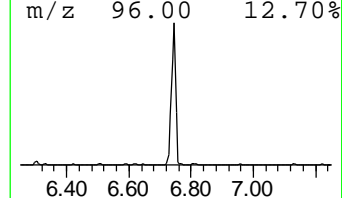
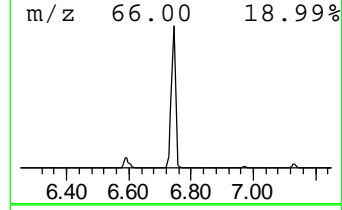
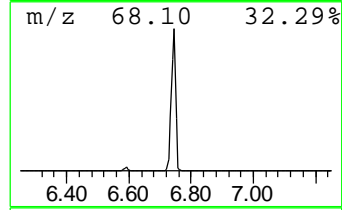
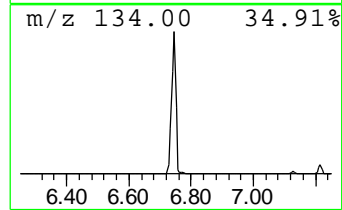
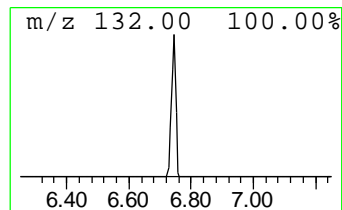
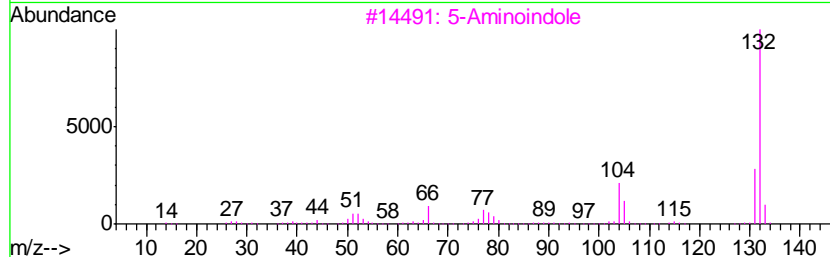
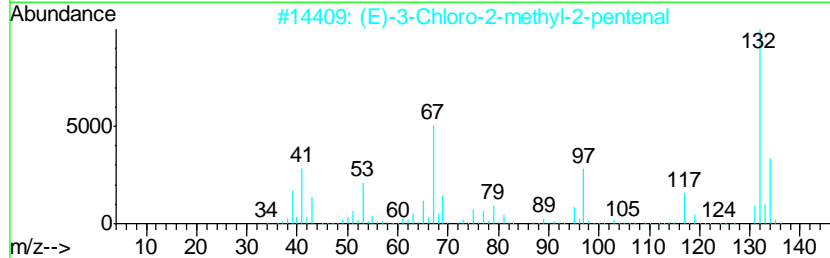
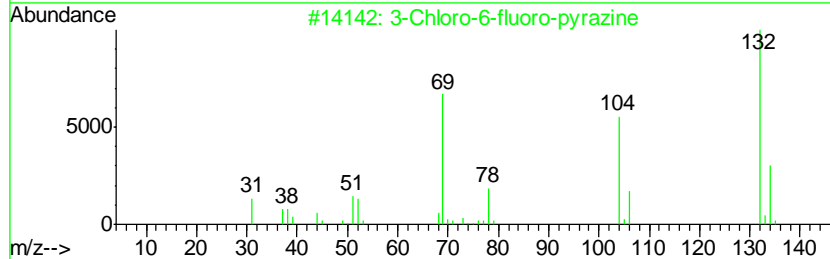
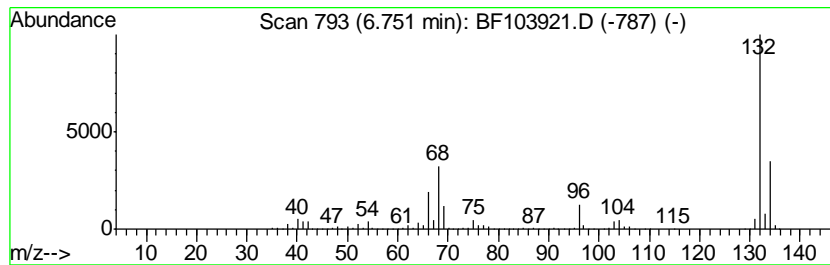
Quant Method : Z:\HPCHEM1\BNA F\METHODS\8270-BF031518.M  
 Quant Title : ASP BNA STANDARDS FOR 5 POINT CALIBRATION

TIC Library : C:\DATABASE\NIST11.L  
 TIC Integration Parameters: LSCINT.P

\*\*\*\*\*  
 Peak Number 3 unknown6.75 Concentration Rank 1

R.T.	EstConc	Area	Relative to ISTD	R.T.
6.75	79.49 ng	3054560	1,4-Dichlorobenzene-d4	6.97

Hit#	of	Tentative ID	MW	MolForm	CAS#	Qual
1	5	3-Chloro-6-fluoro-pyrazine	132	C4H2ClFN2	1000146-10-7	27
2		(E)-3-Chloro-2-methyl-2-pentenal	132	C6H9ClO	031357-76-3	16
3		5-Aminoindole	132	C8H8N2	005192-03-0	12
4		Tranylcypromine-propionyl	189	C12H15NO	1000123-86-3	10
5		4-Chloro-6-fluoro-pyrimidine	132	C4H2ClFN2	051422-01-6	9



Data Path : Z:\HPCHEM1\BNA F\DATA\BF032618\  
 Data File : BF103921.D  
 Acq On : 26 Mar 2018 13:05  
 Operator : JU/SJ  
 Sample : J1994-03  
 Misc :  
 ALS Vial : 10 Sample Multiplier: 1

Instrument :  
 BNA\_F  
 ClientSampleID :  
 PR-MW-02-031918

Quant Method : Z:\HPCHEM1\BNA F\METHODS\8270-BF031518.M  
 Quant Title : ASP BNA STANDARDS FOR 5 POINT CALIBRATION

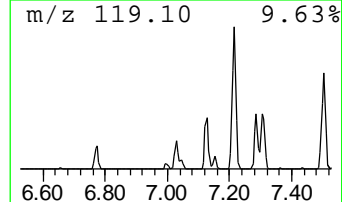
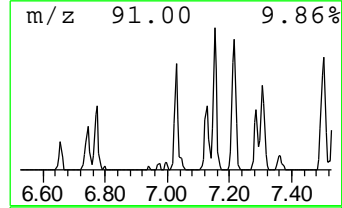
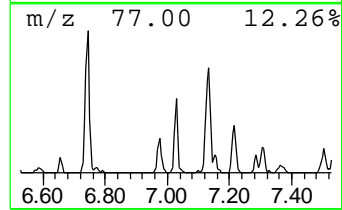
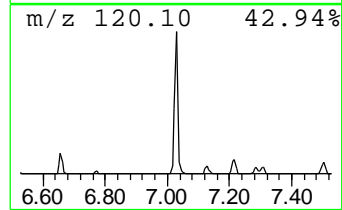
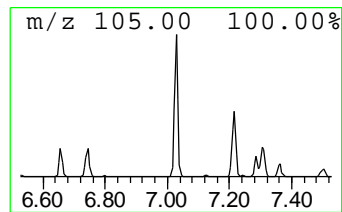
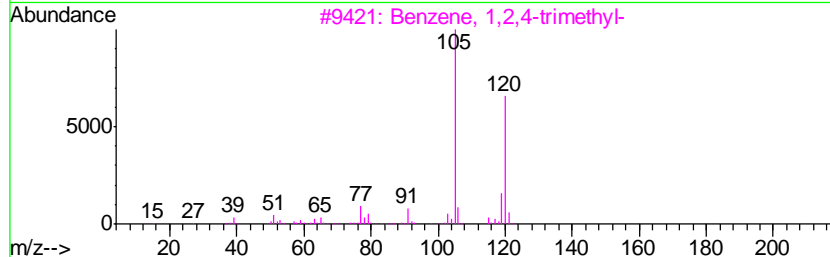
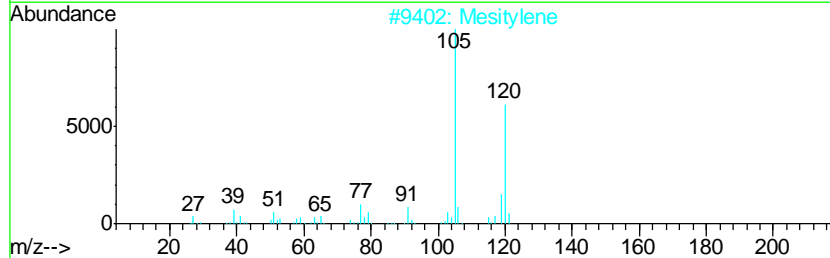
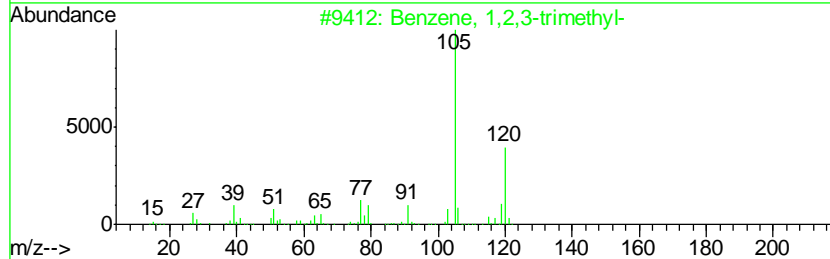
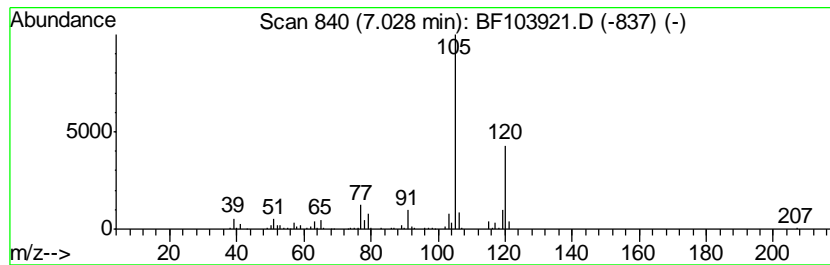
TIC Library : C:\DATABASE\NIST11.L  
 TIC Integration Parameters: LSCINT.P

\*\*\*\*\*  
 Peak Number 4 Benzene, 1,2,3-trimethyl- Concentration Rank 7

R.T.	EstConc	Area	Relative to ISTD	R.T.
7.03	5.25 ng	201853	1,4-Dichlorobenzene-d4	6.97

Hit#	of	Tentative ID	MW	MolForm	CAS#	Qual
1	5	Benzene, 1,2,3-trimethyl-	120	C9H12	000526-73-8	95
2		Mesitylene	120	C9H12	000108-67-8	91
3		Benzene, 1,2,4-trimethyl-	120	C9H12	000095-63-6	91
4		Benzene, 1-ethyl-3-methyl-	120	C9H12	000620-14-4	91
5		Benzene, 1-ethyl-4-methyl-	120	C9H12	000622-96-8	90



Data Path : Z:\HPCHEM1\BNA F\DATA\BF032618\  
 Data File : BF103921.D  
 Acq On : 26 Mar 2018 13:05  
 Operator : JU/SJ  
 Sample : J1994-03  
 Misc :  
 ALS Vial : 10 Sample Multiplier: 1

Instrument :  
 BNA\_F  
 ClientSampleId :  
 PR-MW-02-031918

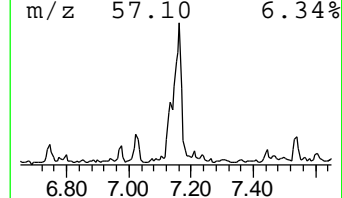
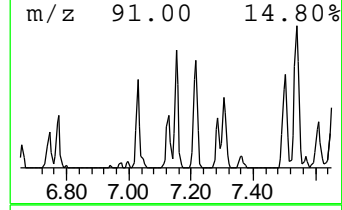
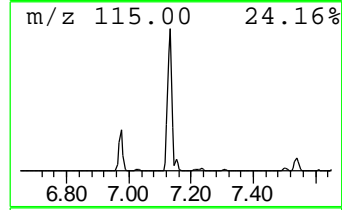
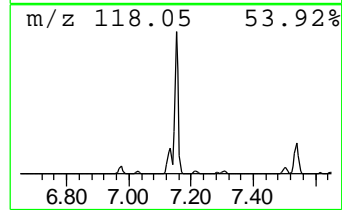
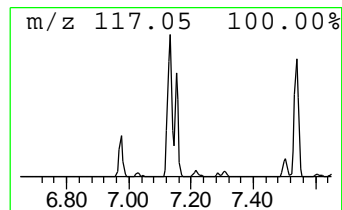
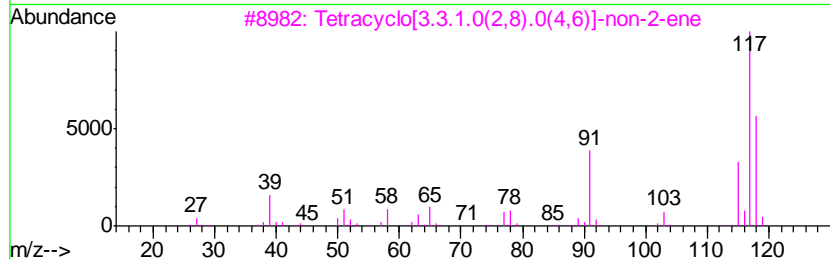
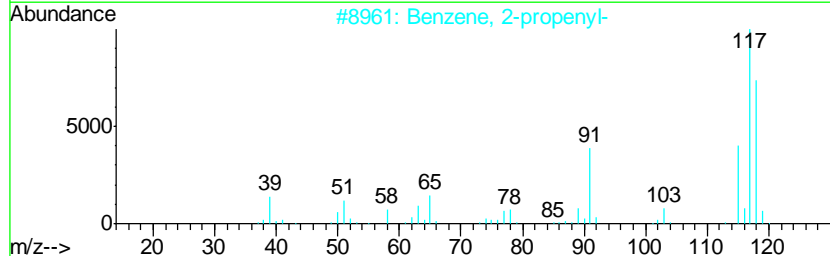
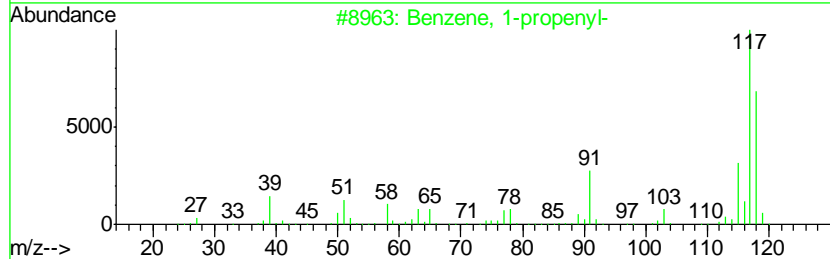
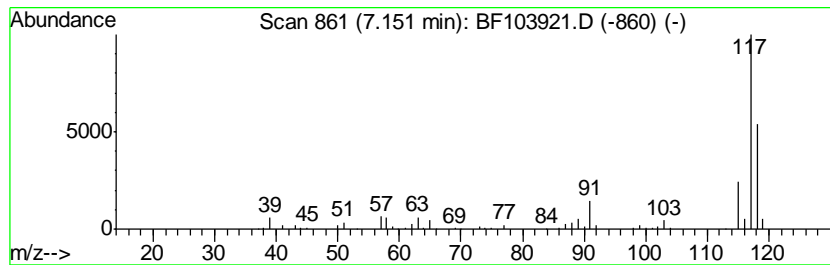
Quant Method : Z:\HPCHEM1\BNA F\METHODS\8270-BF031518.M  
 Quant Title : ASP BNA STANDARDS FOR 5 POINT CALIBRATION

TIC Library : C:\DATABASE\NIST11.L  
 TIC Integration Parameters: LSCINT.P

\*\*\*\*\*  
 Peak Number 6 Benzene, 1-propenyl- Concentration Rank 6

R.T.	EstConc	Area	Relative to ISTD	R.T.
7.15	7.60 ng	292107	1,4-Dichlorobenzene-d4	6.97

Hit#	of	Tentative ID	MW	MolForm	CAS#	Qual
1	5	Benzene, 1-propenyl-	118	C9H10	000637-50-3	87
2		Benzene, 2-propenyl-	118	C9H10	000300-57-2	87
3		Tetracyclo[3.3.1.0(2,8).0(4,6)]-	118	C9H10	1000191-13-7	80
4		Benzene, cyclopropyl-	118	C9H10	000873-49-4	80
5		Indane	118	C9H10	000496-11-7	72





Data Path : Z:\HPCHEM1\BNA F\DATA\BF032618\  
 Data File : BF103921.D  
 Acq On : 26 Mar 2018 13:05  
 Operator : JU/SJ  
 Sample : J1994-03  
 Misc :  
 ALS Vial : 10 Sample Multiplier: 1

Instrument :  
 BNA\_F  
 ClientSampleID :  
 PR-MW-02-031918

Quant Method : Z:\HPCHEM1\BNA F\METHODS\8270-BF031518.M  
 Quant Title : ASP BNA STANDARDS FOR 5 POINT CALIBRATION

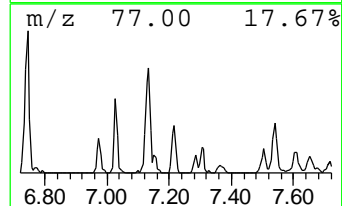
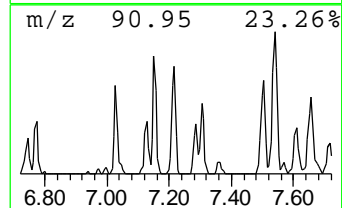
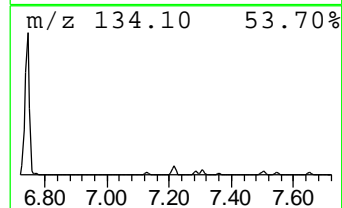
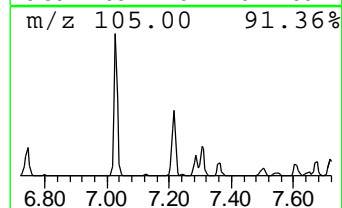
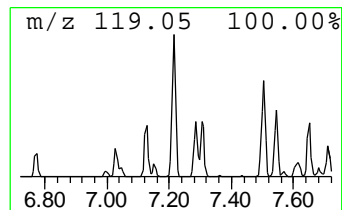
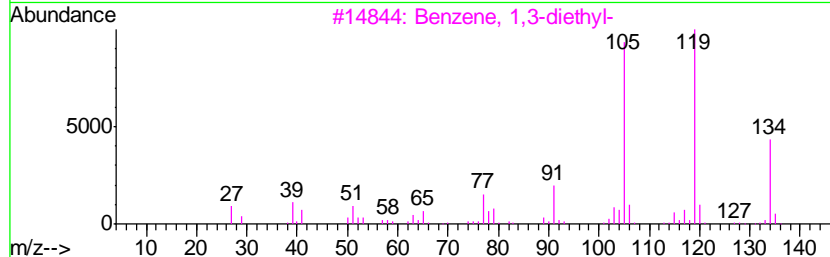
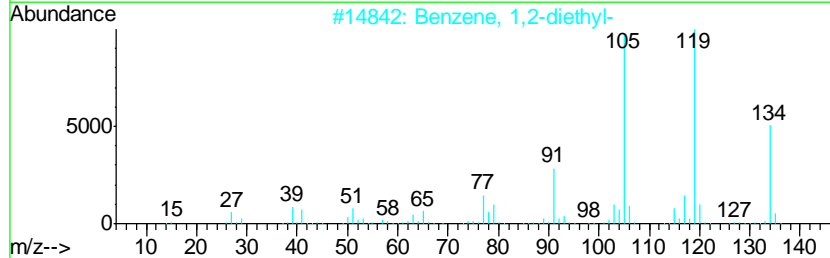
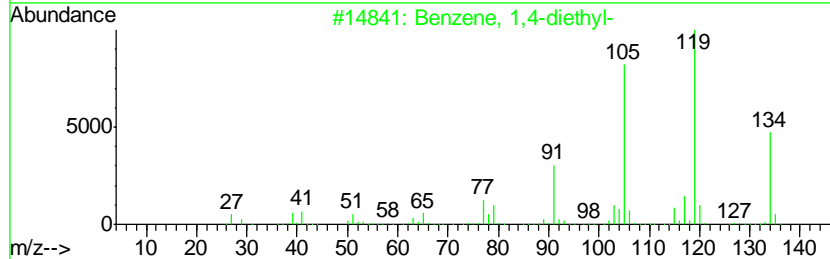
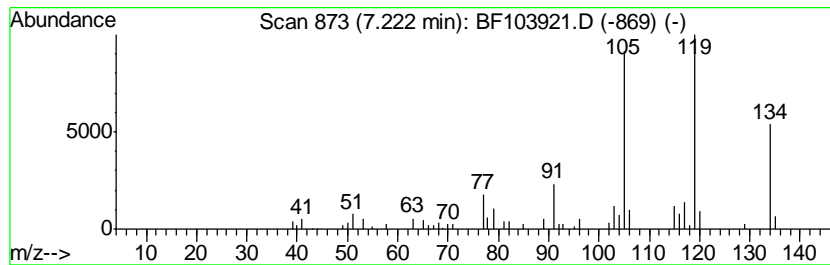
TIC Library : C:\DATABASE\NIST11.L  
 TIC Integration Parameters: LSCINT.P

\*\*\*\*\*  
 Peak Number 7 Benzene, 1,4-diethyl- Concentration Rank 9

R.T.	EstConc	Area	Relative to ISTD	R.T.
7.22	4.31 ng	165690	1,4-Dichlorobenzene-d4	6.97

Hit#	of	Tentative ID	MW	MolForm	CAS#	Qual
1	5	Benzene, 1,4-diethyl-	134	C10H14	000105-05-5	97
2		Benzene, 1,2-diethyl-	134	C10H14	000135-01-3	96
3		Benzene, 1,3-diethyl-	134	C10H14	000141-93-5	96
4		Benzene, 1-ethyl-3,5-dimethyl-	134	C10H14	000934-74-7	90
5		Benzene, 2-ethyl-1,3-dimethyl-	134	C10H14	002870-04-4	83



Data Path : Z:\HPCHEM1\BNA F\DATA\BF032618\  
 Data File : BF103921.D  
 Acq On : 26 Mar 2018 13:05  
 Operator : JU/SJ  
 Sample : J1994-03  
 Misc :  
 ALS Vial : 10 Sample Multiplier: 1

Instrument :  
 BNA\_F  
 ClientSampleID :  
 PR-MW-02-031918

Quant Method : Z:\HPCHEM1\BNA F\METHODS\8270-BF031518.M  
 Quant Title : ASP BNA STANDARDS FOR 5 POINT CALIBRATION

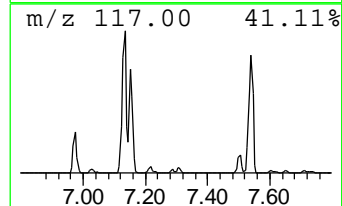
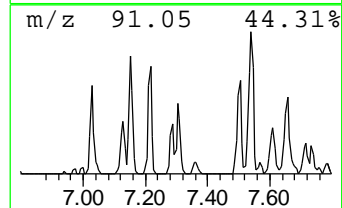
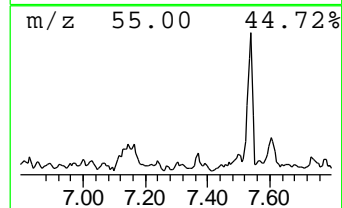
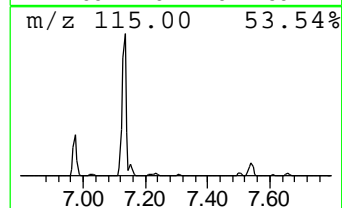
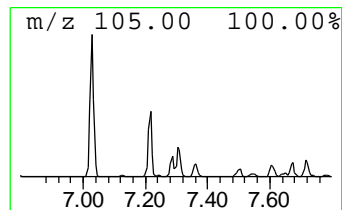
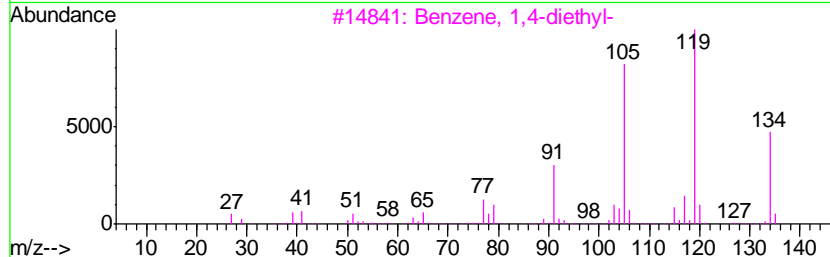
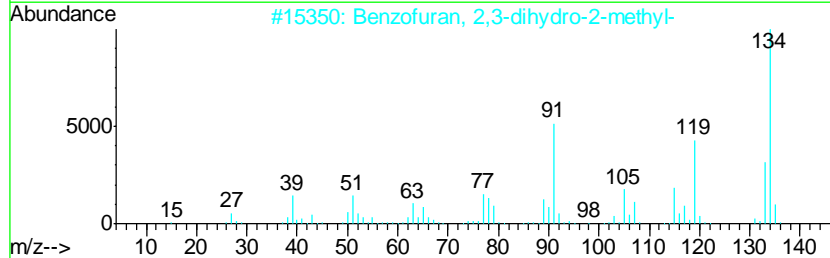
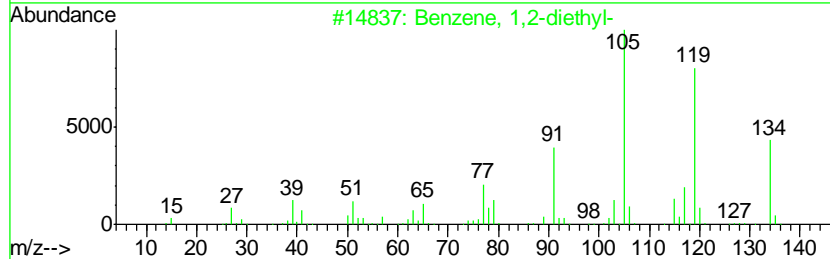
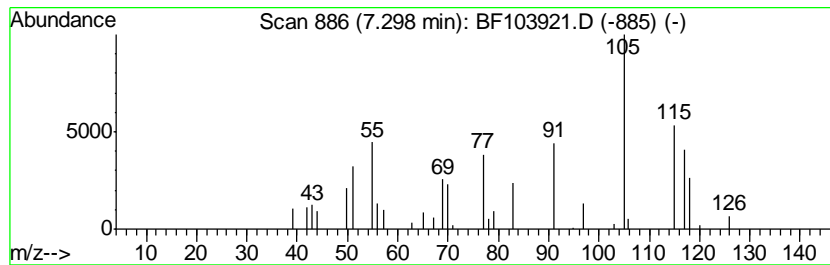
TIC Library : C:\DATABASE\NIST11.L  
 TIC Integration Parameters: LSCINT.P

\*\*\*\*\*  
 Peak Number 8 Benzene, 1,2-diethyl- Concentration Rank 14

R.T.	EstConc	Area	Relative to ISTD	R.T.
7.30	2.40 ng	92112	1,4-Dichlorobenzene-d4	6.97

Hit#	of	Tentative ID	MW	MolForm	CAS#	Qual
1	5	Benzene, 1,2-diethyl-	134	C10H14	000135-01-3	98
2		Benzofuran, 2,3-dihydro-2-methyl-	134	C9H10O	001746-11-8	80
3		Benzene, 1,4-diethyl-	134	C10H14	000105-05-5	80
4		Benzene, 1,3-diethyl-	134	C10H14	000141-93-5	80
5		1,4-Cyclohexadiene, 3-ethenyl-1,...	134	C10H14	062338-57-2	64



Data Path : Z:\HPCHEM1\BNA F\DATA\BF032618\  
 Data File : BF103921.D  
 Acq On : 26 Mar 2018 13:05  
 Operator : JU/SJ  
 Sample : J1994-03  
 Misc :  
 ALS Vial : 10 Sample Multiplier: 1

Instrument :  
 BNA\_F  
 ClientSampled :  
 PR-MW-02-031918

Quant Method : Z:\HPCHEM1\BNA F\METHODS\8270-BF031518.M  
 Quant Title : ASP BNA STANDARDS FOR 5 POINT CALIBRATION

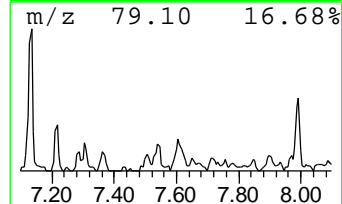
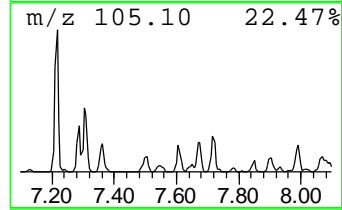
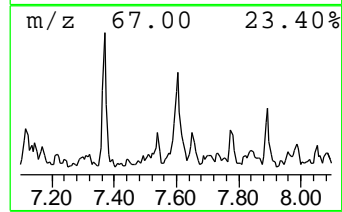
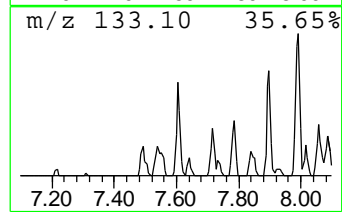
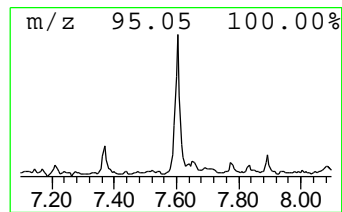
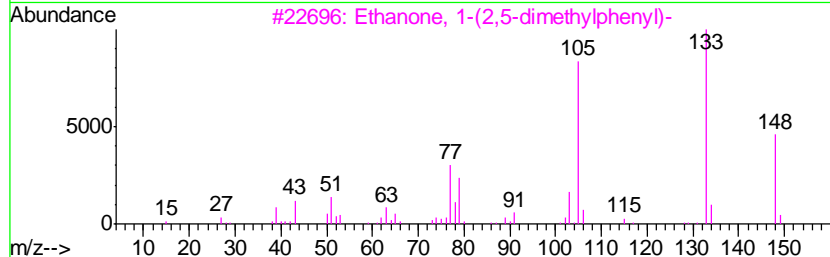
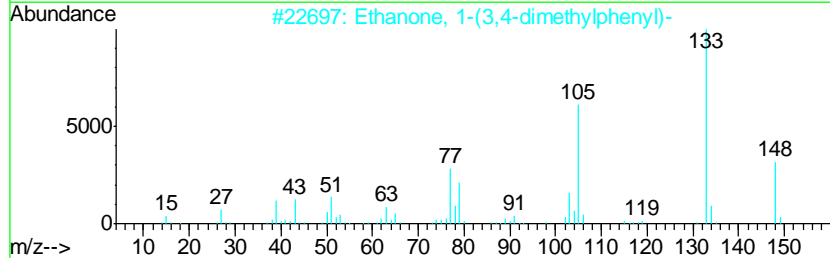
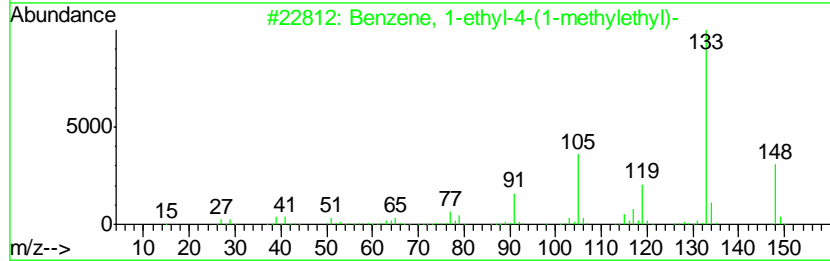
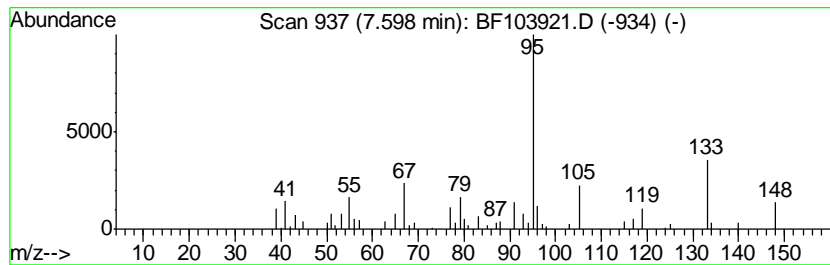
TIC Library : C:\DATABASE\NIST11.L  
 TIC Integration Parameters: LSCINT.P

\*\*\*\*\*  
 Peak Number 9 unknown7.60 Concentration Rank 13

R.T.	EstConc	Area	Relative to ISTD	R.T.
7.60	3.44 ng	132194	1,4-Dichlorobenzene-d4	6.97

Hit#	of	Tentative ID	MW	MolForm	CAS#	Qual
1	5	Benzene, 1-ethyl-4-(1-methylethyl)-	148	C11H16	004218-48-8	42
2		Ethanone, 1-(3,4-dimethylphenyl)-	148	C10H12O	003637-01-2	35
3		Ethanone, 1-(2,5-dimethylphenyl)-	148	C10H12O	002142-73-6	35
4		Ethanone, 1-(2,4-dimethylphenyl)-	148	C10H12O	000089-74-7	35
5		Benzene, 1-ethyl-2,4,5-trimethyl-	148	C11H16	017851-27-3	27



Data Path : Z:\HPCHEM1\BNA F\DATA\BF032618\  
 Data File : BF103921.D  
 Acq On : 26 Mar 2018 13:05  
 Operator : JU/SJ  
 Sample : J1994-03  
 Misc :  
 ALS Vial : 10 Sample Multiplier: 1

Instrument :  
 BNA\_F  
 ClientSampleId :  
 PR-MW-02-031918

Quant Method : Z:\HPCHEM1\BNA F\METHODS\8270-BF031518.M  
 Quant Title : ASP BNA STANDARDS FOR 5 POINT CALIBRATION

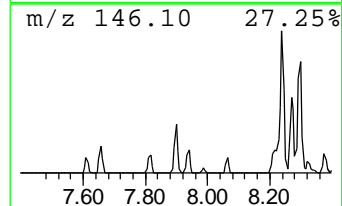
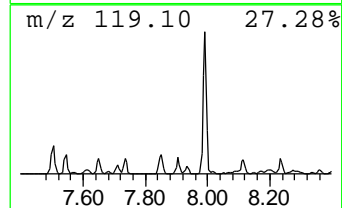
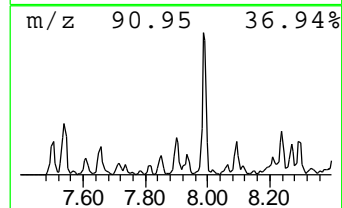
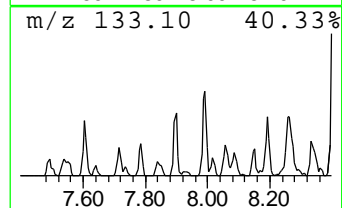
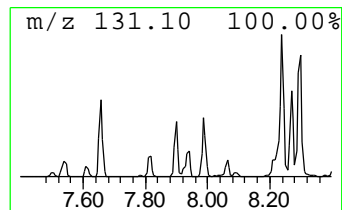
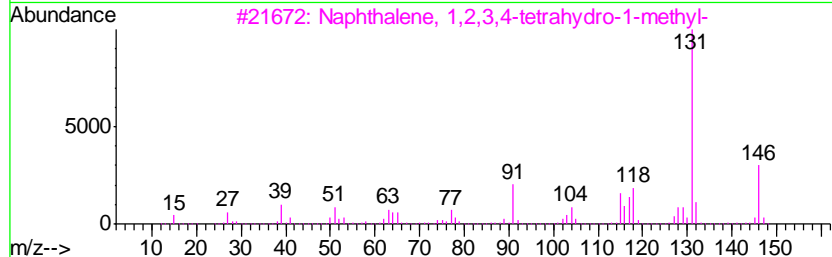
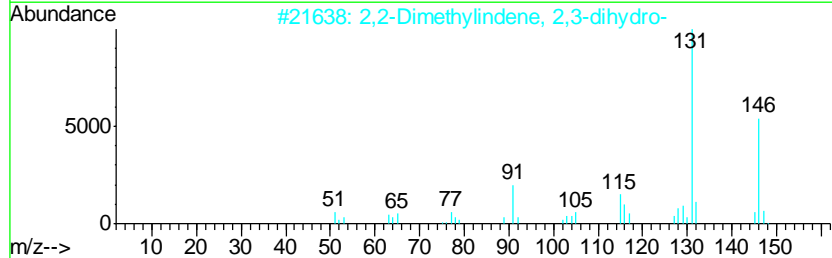
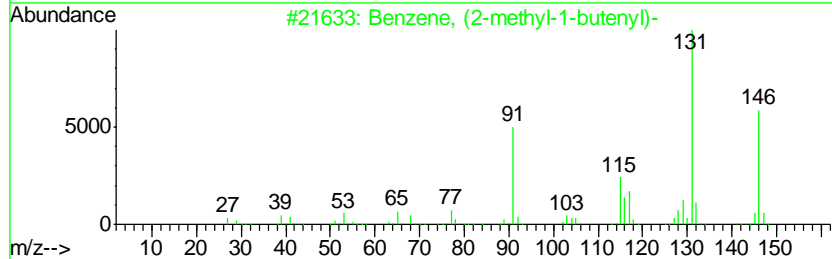
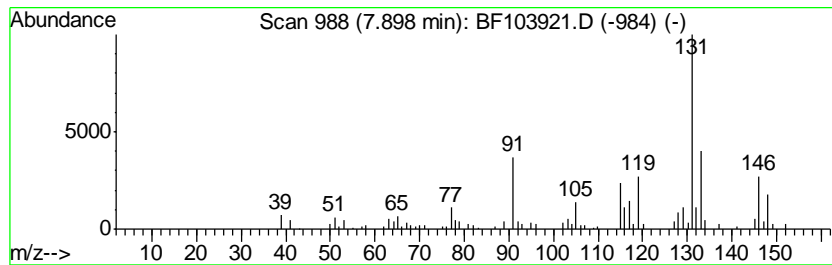
TIC Library : C:\DATABASE\NIST11.L  
 TIC Integration Parameters: LSCINT.P

\*\*\*\*\*  
 Peak Number 10 Benzene, (2-methyl-1-butenyl)- Concentration Rank 15

R.T.	EstConc	Area	Relative to ISTD	R.T.
7.90	2.32 ng	153759	Naphthalene-d8	8.26

Hit#	of	Tentative ID	MW	MolForm	CAS#	Qual
1	5	Benzene, (2-methyl-1-butenyl)-	146	C11H14	056253-64-6	96
2		2,2-Dimethylindene, 2,3-dihydro-	146	C11H14	020836-11-7	83
3		Naphthalene, 1,2,3,4-tetrahydro-...	146	C11H14	001559-81-5	83
4		1H-Indene, 2,3-dihydro-1,6-dimet...	146	C11H14	017059-48-2	60
5		Benzene, 1-methyl-2-(1-methyl-2-...	146	C11H14	097664-19-2	60



Data Path : Z:\HPCHEM1\BNA F\DATA\BF032618\  
 Data File : BF103921.D  
 Acq On : 26 Mar 2018 13:05  
 Operator : JU/SJ  
 Sample : J1994-03  
 Misc :  
 ALS Vial : 10 Sample Multiplier: 1

Instrument :  
 BNA\_F  
 ClientSampled :  
 PR-MW-02-031918

Quant Method : Z:\HPCHEM1\BNA F\METHODS\8270-BF031518.M  
 Quant Title : ASP BNA STANDARDS FOR 5 POINT CALIBRATION

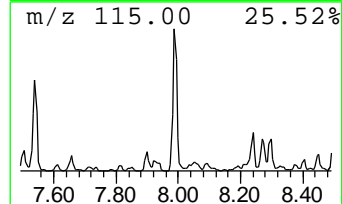
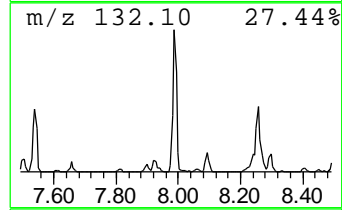
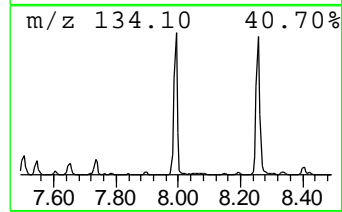
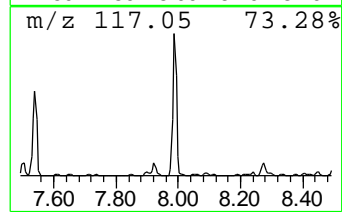
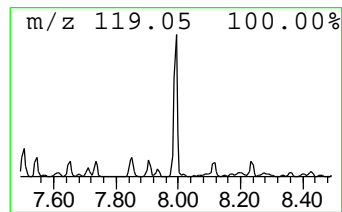
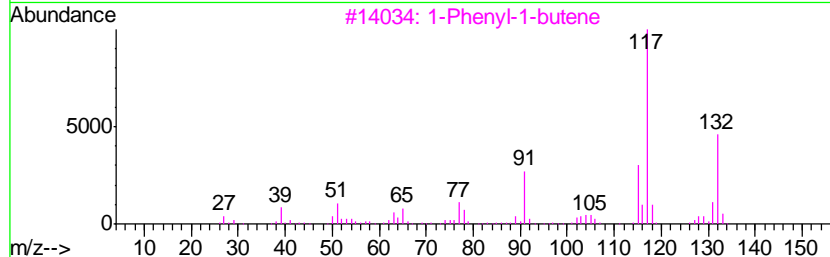
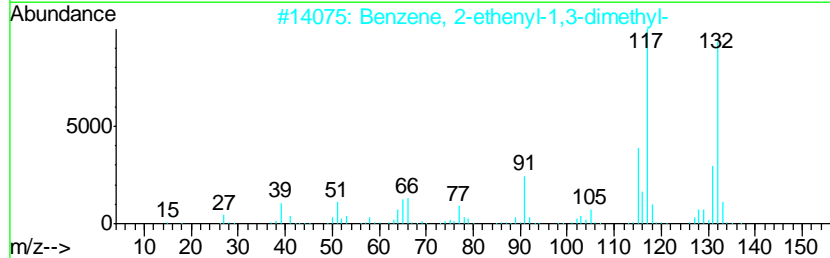
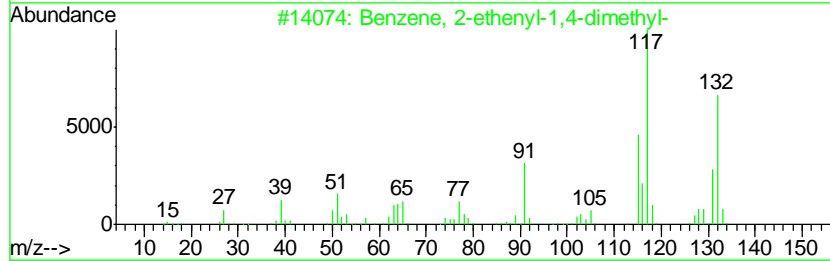
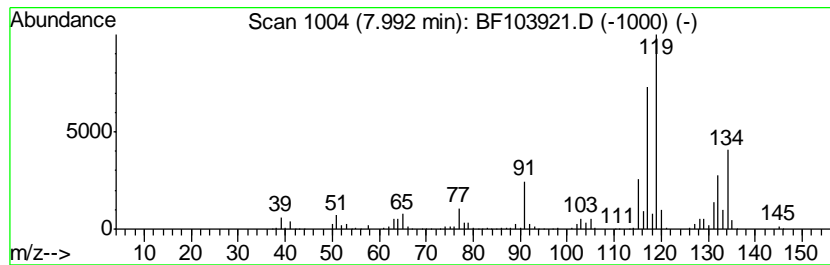
TIC Library : C:\DATABASE\NIST11.L  
 TIC Integration Parameters: LSCINT.P

\*\*\*\*\*  
 Peak Number 11 Benzene, 2-ethenyl-1,4-dime... Concentration Rank 4

R.T.	EstConc	Area	Relative to ISTD	R.T.
7.99	10.86 ng	718755	Naphthalene-d8	8.26

Hit#	of	Tentative ID	MW	MolForm	CAS#	Qual
1	5	Benzene, 2-ethenyl-1,4-dimethyl-	132	C10H12	002039-89-6	95
2		Benzene, 2-ethenyl-1,3-dimethyl-	132	C10H12	002039-90-9	86
3		1-Phenyl-1-butene	132	C10H12	000824-90-8	70
4		Benzene, 1-methyl-2-(2-propenyl)-	132	C10H12	001587-04-8	70
5		Benzene, 1-ethenyl-3-ethyl-	132	C10H12	007525-62-4	70



Data Path : Z:\HPCHEM1\BNA F\DATA\BF032618\  
 Data File : BF103921.D  
 Acq On : 26 Mar 2018 13:05  
 Operator : JU/SJ  
 Sample : J1994-03  
 Misc :  
 ALS Vial : 10 Sample Multiplier: 1

Instrument :  
 BNA\_F  
 ClientSampled :  
 PR-MW-02-031918

Quant Method : Z:\HPCHEM1\BNA F\METHODS\8270-BF031518.M  
 Quant Title : ASP BNA STANDARDS FOR 5 POINT CALIBRATION

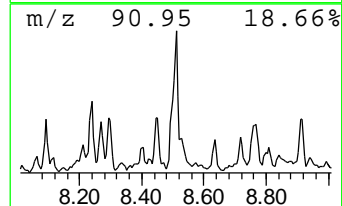
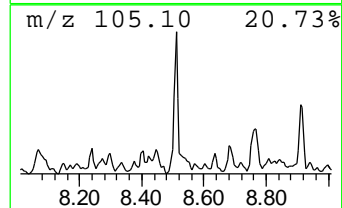
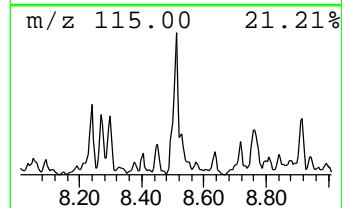
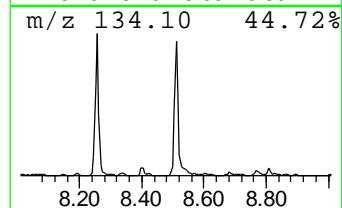
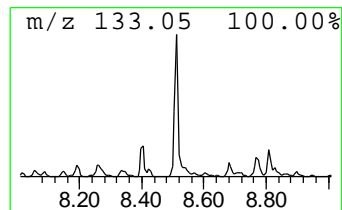
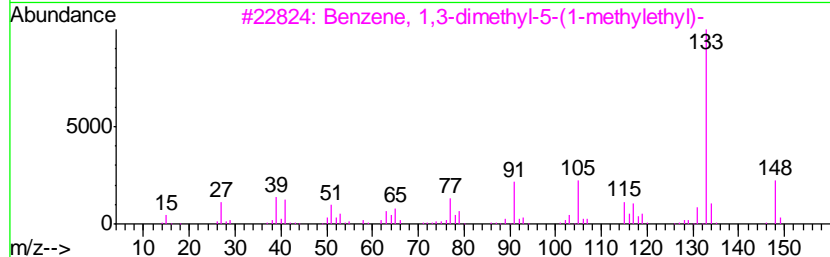
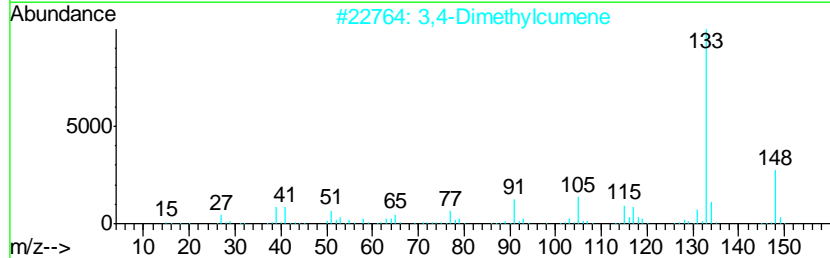
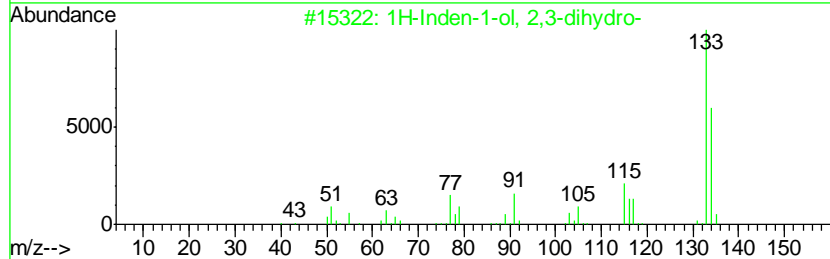
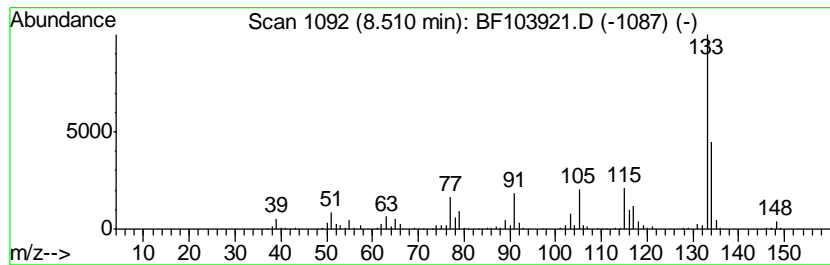
TIC Library : C:\DATABASE\NIST11.L  
 TIC Integration Parameters: LSCINT.P

\*\*\*\*\*  
 Peak Number 12 1H-Inden-1-ol, 2,3-dihydro- Concentration Rank 5

R.T.	EstConc	Area	Relative to ISTD	R.T.
8.51	8.04 ng	531948	Napthalene-d8	8.26

Hit#	of	Tentative ID	MW	MolForm	CAS#	Qual
1	5	1H-Inden-1-ol, 2,3-dihydro-	134	C9H10O	006351-10-6	94
2		3,4-Dimethylcumene	148	C11H16	1000370-34-1	53
3		Benzene, 1,3-dimethyl-5-(1-methy...	148	C11H16	004706-90-5	53
4		Pyrazine, 2-methyl-5-(2-propenyl)-	134	C8H10N2	055138-63-1	50
5		Benzene, 1-ethyl-4-(1-methylethyl)-	148	C11H16	004218-48-8	50



Data Path : Z:\HPCHEM1\BNA F\DATA\BF032618\  
 Data File : BF103921.D  
 Acq On : 26 Mar 2018 13:05  
 Operator : JU/SJ  
 Sample : J1994-03  
 Misc :  
 ALS Vial : 10 Sample Multiplier: 1

Instrument :  
 BNA\_F  
 ClientSampleID :  
 PR-MW-02-031918

Quant Method : Z:\HPCHEM1\BNA F\METHODS\8270-BF031518.M  
 Quant Title : ASP BNA STANDARDS FOR 5 POINT CALIBRATION

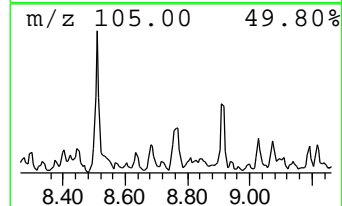
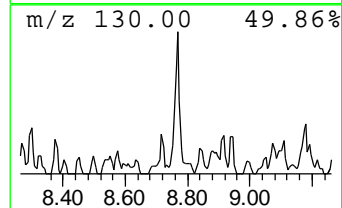
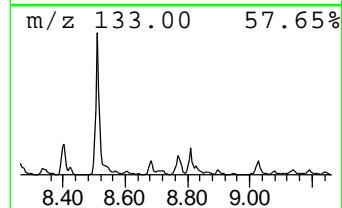
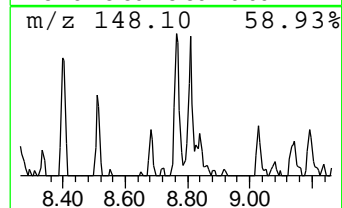
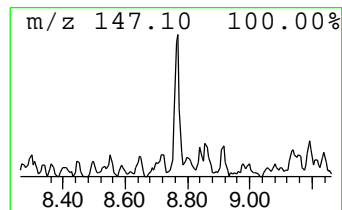
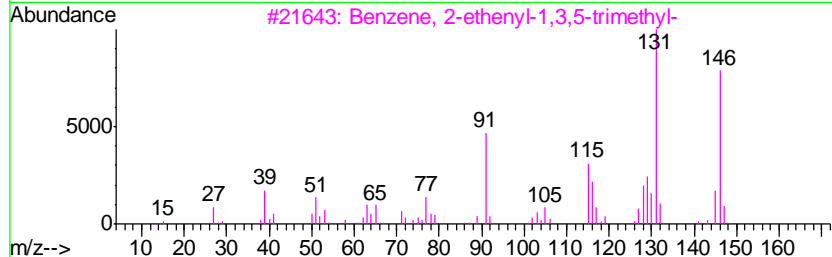
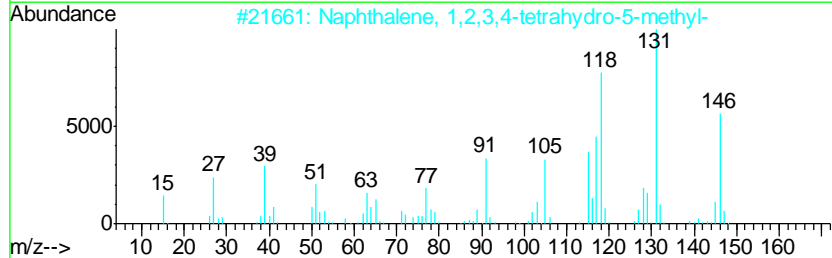
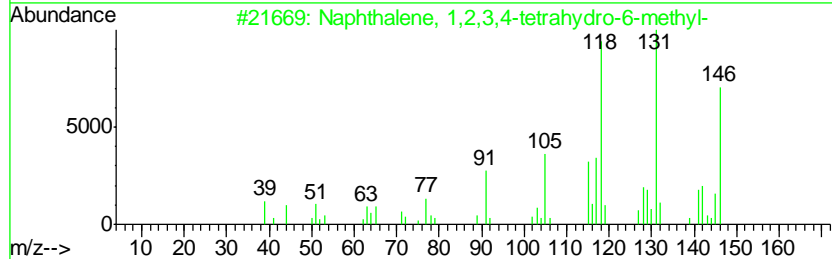
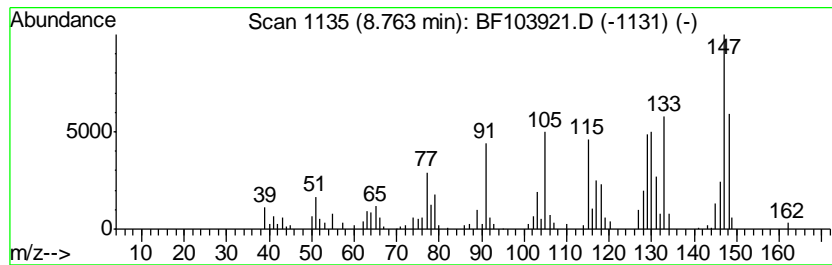
TIC Library : C:\DATABASE\NIST11.L  
 TIC Integration Parameters: LSCINT.P

\*\*\*\*\*  
 Peak Number 13 Naphthalene, 1,2,3,4-tetra... Concentration Rank 11

R.T.	EstConc	Area	Relative to ISTD	R.T.
8.76	3.95 ng	261282	Naphthalene-d8	8.26

Hit#	of	Tentative ID	MW	MolForm	CAS#	Qual
1	5	Naphthalene, 1,2,3,4-tetrahydro-...	146	C11H14	001680-51-9	89
2		Naphthalene, 1,2,3,4-tetrahydro-...	146	C11H14	002809-64-5	86
3		Benzene, 2-ethenyl-1,3,5-trimethyl-	146	C11H14	000769-25-5	60
4		Benzene, (1-methylenebutyl)-	146	C11H14	005676-32-4	46
5		2,3,4,5,6,7-Hexahydro-1H-cyclope...	146	C11H14	1000189-31-0	46



Data Path : Z:\HPCHEM1\BNA F\DATA\BF032618\  
 Data File : BF103921.D  
 Acq On : 26 Mar 2018 13:05  
 Operator : JU/SJ  
 Sample : J1994-03  
 Misc :  
 ALS Vial : 10 Sample Multiplier: 1

Instrument :  
 BNA\_F  
 ClientSampleId :  
 PR-MW-02-031918

Quant Method : Z:\HPCHEM1\BNA F\METHODS\8270-BF031518.M  
 Quant Title : ASP BNA STANDARDS FOR 5 POINT CALIBRATION

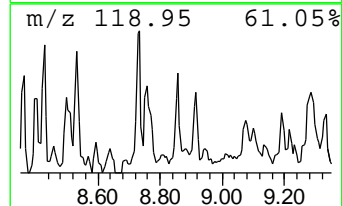
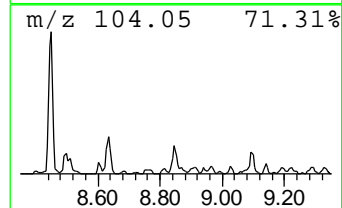
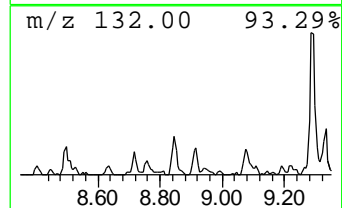
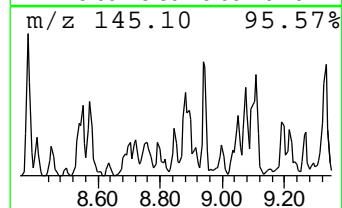
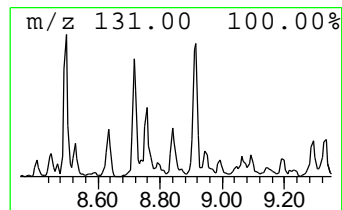
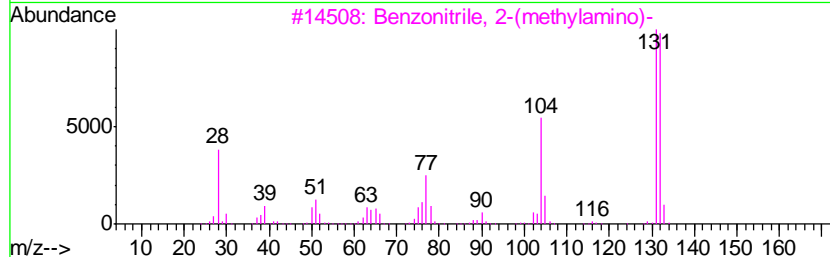
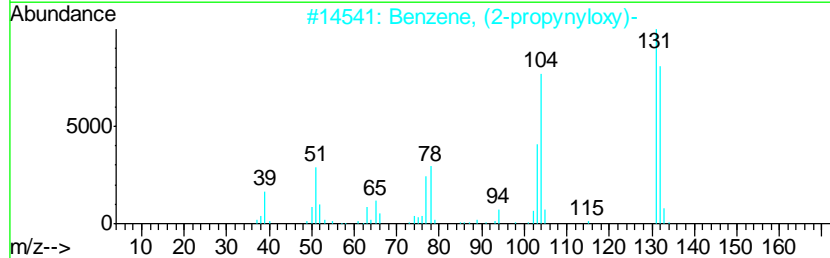
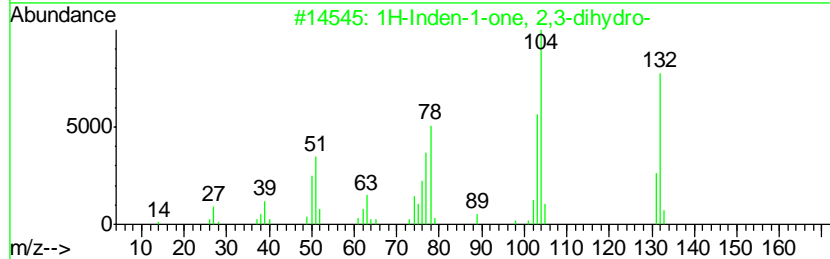
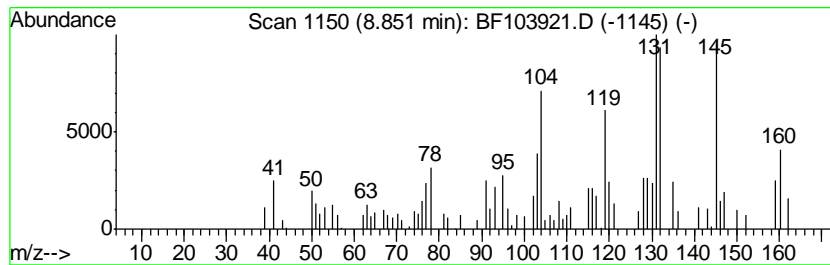
TIC Library : C:\DATABASE\NIST11.L  
 TIC Integration Parameters: LSCINT.P

\*\*\*\*\*  
 Peak Number 14 1H-Inden-1-one, 2,3-dihydro- Concentration Rank 16

R.T.	EstConc	Area	Relative to ISTD	R.T.
8.85	2.15 ng	142420	Naphthalene-d8	8.26

Hit#	of	Tentative ID	MW	MolForm	CAS#	Qual
1	5	1H-Inden-1-one, 2,3-dihydro-	132	C9H8O	000083-33-0	72
2		Benzene, (2-propynyloxy)-	132	C9H8O	013610-02-1	60
3		Benzonitrile, 2-(methylamino)-	132	C8H8N2	017583-40-3	49
4		Tricyclo[4.2.1.1(2,5)]deca-3,7-d...	160	C10H8O2	014224-65-8	43
5		4-Methyl-2H-benzopyrane	146	C10H10O	021776-94-3	43





Data Path : Z:\HPCHEM1\BNA F\DATA\BF032618\  
 Data File : BF103921.D  
 Acq On : 26 Mar 2018 13:05  
 Operator : JU/SJ  
 Sample : J1994-03  
 Misc :  
 ALS Vial : 10 Sample Multiplier: 1

Instrument :  
 BNA\_F  
 ClientSampled :  
 PR-MW-02-031918

Quant Method : Z:\HPCHEM1\BNA F\METHODS\8270-BF031518.M  
 Quant Title : ASP BNA STANDARDS FOR 5 POINT CALIBRATION

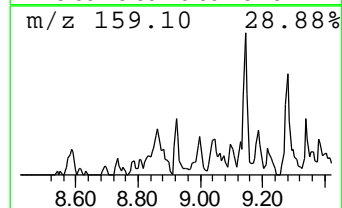
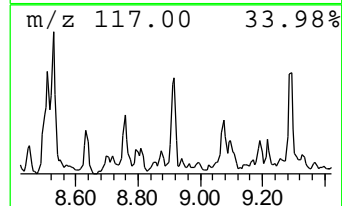
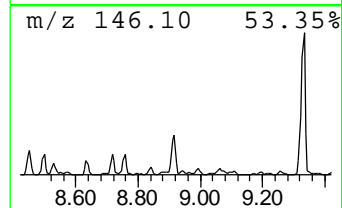
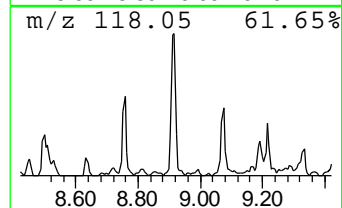
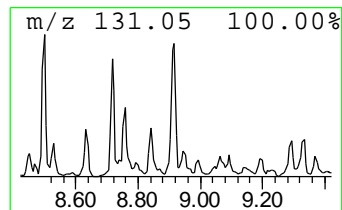
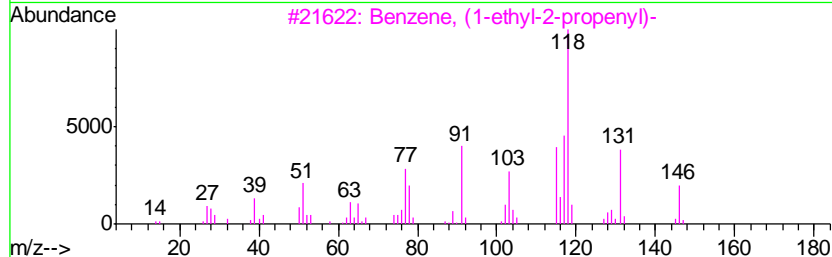
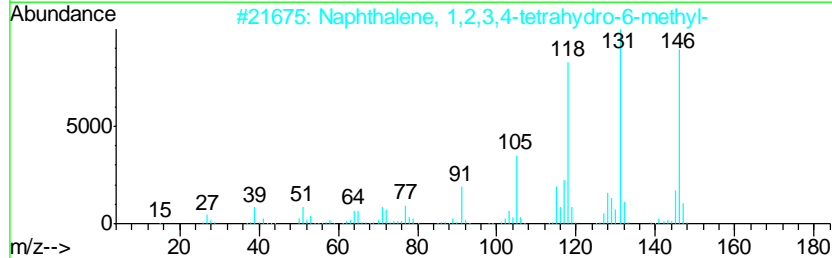
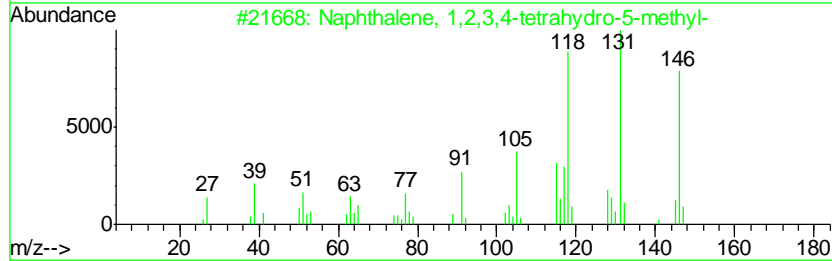
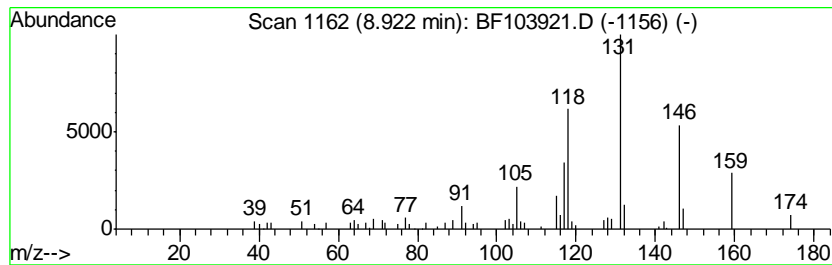
TIC Library : C:\DATABASE\NIST11.L  
 TIC Integration Parameters: LSCINT.P

\*\*\*\*\*  
 Peak Number 15 Naphthalene, 1,2,3,4-tetra... Concentration Rank 12

R.T.	EstConc	Area	Relative to ISTD	R.T.
8.92	3.45 ng	227951	Naphthalene-d8	8.26

Hit#	of	Tentative ID	MW	MolForm	CAS#	Qual
1	5	Naphthalene, 1,2,3,4-tetrahydro-...	146	C11H14	002809-64-5	95
2		Naphthalene, 1,2,3,4-tetrahydro-...	146	C11H14	001680-51-9	93
3		Benzene, (1-ethyl-2-propenyl)-	146	C11H14	019947-22-9	76
4		Benzene, (2-methyl-1-butenyl)-	146	C11H14	056253-64-6	70
5		2,3,4,5,6,7-Hexahydro-1H-cyclope...	146	C11H14	1000189-31-0	64



Data Path : Z:\HPCHEM1\BNA F\DATA\BF032618\  
 Data File : BF103921.D  
 Acq On : 26 Mar 2018 13:05  
 Operator : JU/SJ  
 Sample : J1994-03  
 Misc :  
 ALS Vial : 10 Sample Multiplier: 1

Instrument :  
 BNA\_F  
 ClientSampleId :  
 PR-MW-02-031918

Quant Method : Z:\HPCHEM1\BNA F\METHODS\8270-BF031518.M  
 Quant Title : ASP BNA STANDARDS FOR 5 POINT CALIBRATION

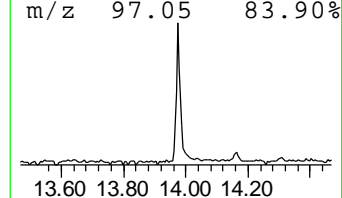
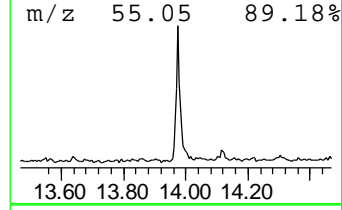
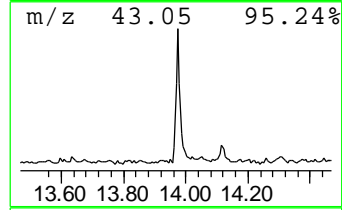
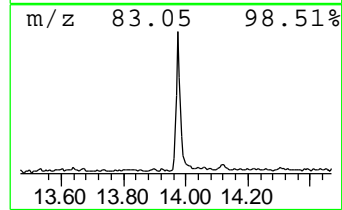
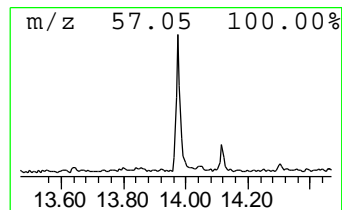
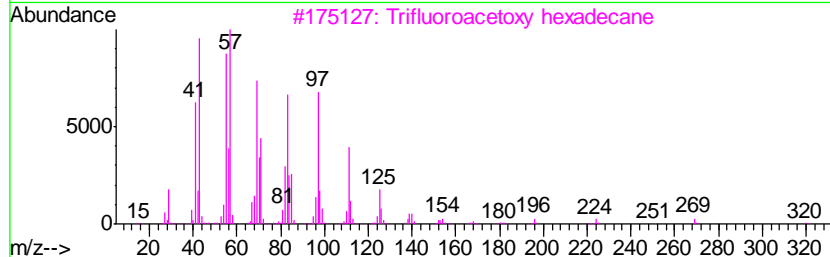
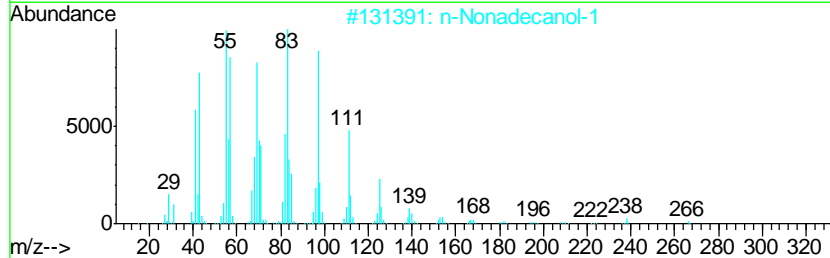
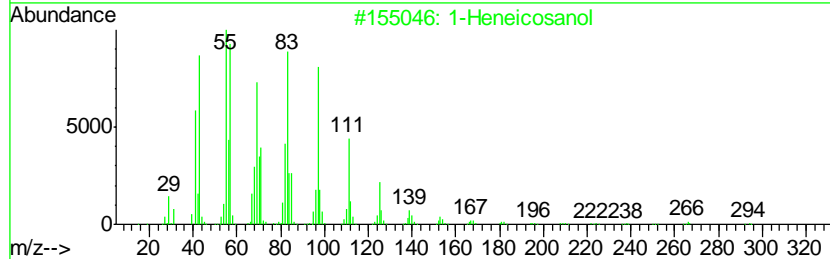
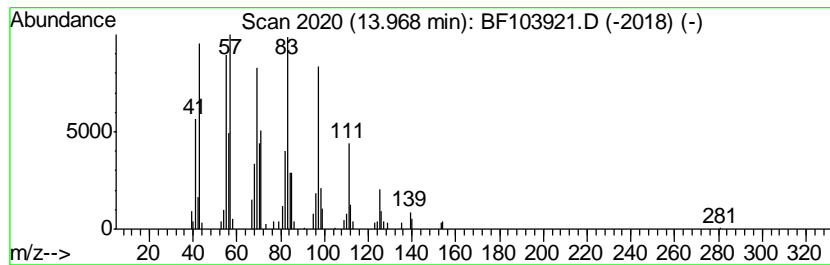
TIC Library : C:\DATABASE\NIST11.L  
 TIC Integration Parameters: LSCINT.P

\*\*\*\*\*  
 Peak Number 16 1-Heneicosanol Concentration Rank 10

R.T.	EstConc	Area	Relative to ISTD	R.T.
13.97	4.04 ng	219672	Chrysene-d12	14.16

Hit#	of	Tentative ID	MW	MolForm	CAS#	Qual
1	5	1-Heneicosanol	312	C21H44O	015594-90-8	95
2		n-Nonadecanol-1	284	C19H40O	001454-84-8	94
3		Trifluoroacetoxy hexadecane	338	C18H33F3O2	006222-03-3	93
4		Heptadecyl trifluoroacetate	352	C19H35F3O2	1000351-87-0	93
5		n-Tetracosanol-1	354	C24H50O	000506-51-4	91



Data Path : Z:\HPCHEM1\BNA\_F\DATA\BF032618\  
 Data File : BF103921.D  
 Acq On : 26 Mar 2018 13:05  
 Operator : JU/SJ  
 Sample : J1994-03  
 Misc :  
 ALS Vial : 10 Sample Multiplier: 1

Instrument :  
 BNA\_F  
 ClientSampleId :  
 PR-MW-02-031918

Quant Method : Z:\HPCHEM1\BNA\_F\METHODS\8270-BF031518.M  
 Quant Title : ASP BNA STANDARDS FOR 5 POINT CALIBRATION

TIC Library : C:\DATABASE\NIST11.L  
 TIC Integration Parameters: LSCINT.P

TIC Top Hit name	RT	EstConc	Units	Response	--Internal Standard--			
					#	RT	Resp	Conc
Butane, 2-methoxy...	2.30	12.2	ng	467791	1	6.97	768575	20.0
unknown5.20	5.20	4.4	ng	169303	1	6.97	768575	20.0
unknown6.75	6.75	79.5	ng	3054560	1	6.97	768575	20.0
Benzene, 1,2,3-tr...	7.03	5.3	ng	201853	1	6.97	768575	20.0
Benzene, 1-propenyl-	7.15	7.6	ng	292107	1	6.97	768575	20.0
Benzene, 1,4-diet...	7.22	4.3	ng	165690	1	6.97	768575	20.0
Benzene, 1,2-diet...	7.30	2.4	ng	92112	1	6.97	768575	20.0
unknown7.60	7.60	3.4	ng	132194	1	6.97	768575	20.0
Benzene, (2-methy...	7.90	2.3	ng	153759	2	8.26	1323170	20.0
Benzene, 2-etheny...	7.99	10.9	ng	718755	2	8.26	1323170	20.0
1H-Inden-1-ol, 2,...	8.51	8.0	ng	531948	2	8.26	1323170	20.0
Naphthalene, 1,2,...	8.76	4.0	ng	261282	2	8.26	1323170	20.0
1H-Inden-1-one, 2...	8.85	2.1	ng	142420	2	8.26	1323170	20.0
Naphthalene, 1,2,...	8.92	3.5	ng	227951	2	8.26	1323170	20.0
1-Heneicosanol	13.97	4.0	ng	219672	5	14.16	1087170	20.0