

Data Path : Z:\svoasrv\HPCHEM1\BNA_F\Data\BF032621\
 Data File : BF123491.D
 Acq On : 26 Mar 2021 17:50
 Operator : JU/CG
 Sample : M1770-22
 Misc :
 ALS Vial : 16 Sample Multiplier: 1

Instrument :
 BNA_F
 ClientSampleId :
 MW-102S

Quant Time: Mar 26 22:58:09 2021
 Quant Method : Z:\SVOASRV\HPCHEM1\BNA_F\METHODS\8270-BF032321.M
 Quant Title : ASP BNA STANDARDS FOR 5 POINT CALIBRATION
 QLast Update : Fri Mar 26 12:51:59 2021
 Response via : Initial Calibration

Compound	R.T.	QIon	Response	Conc	Units	Dev(Min)
Internal Standards						
1) 1,4-Dichlorobenzene-d4	6.898	152	254579	20.00	ng	0.00
21) Naphthalene-d8	8.186	136	949604	20.00	ng	# 0.00
39) Acenaphthene-d10	9.945	164	529041	20.00	ng	0.00
64) Phenanthrene-d10	11.433	188	936904	20.00	ng	0.00
76) Chrysene-d12	14.080	240	619243	20.00	ng	0.00
86) Perylene-d12	15.574	264	470980	20.00	ng	0.00
System Monitoring Compounds						
5) 2-Fluorophenol	5.522	112	938756	60.33	ng	0.00
7) Phenol-d6	6.516	99	746524	36.04	ng	-0.01
23) Nitrobenzene-d5	7.463	82	1611934	91.61	ng	0.00
42) 2,4,6-Tribromophenol	10.733	330	763067	129.01	ng	0.00
45) 2-Fluorobiphenyl	9.263	172	2820790	76.17	ng	0.00
79) Terphenyl-d14	13.027	244	2982562	81.63	ng	0.00

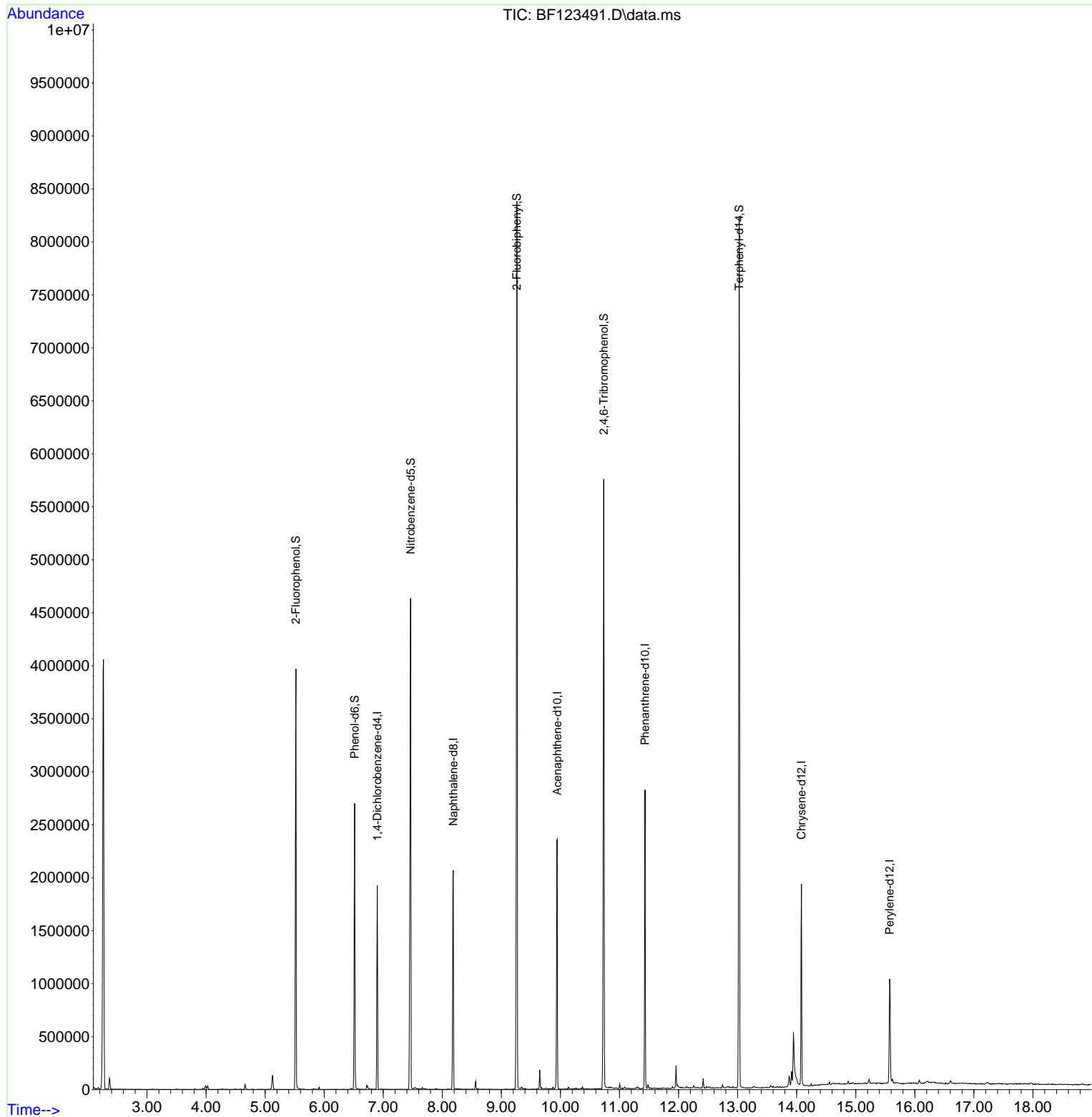
Target Compounds Qvalue

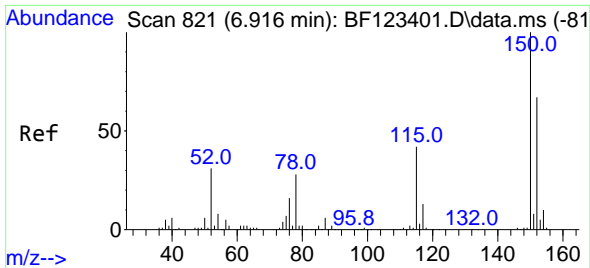
(#) = qualifier out of range (m) = manual integration (+) = signals summed

Data Path : Z:\svoasrv\HPCHEM1\BNA_F\Data\BF032621\
 Data File : BF123491.D
 Acq On : 26 Mar 2021 17:50
 Operator : JU/CG
 Sample : M1770-22
 Misc :
 ALS Vial : 16 Sample Multiplier: 1

Instrument :
 BNA_F
 ClientSampleId :
 MW-102S

Quant Time: Mar 26 22:58:09 2021
 Quant Method : Z:\SVOASRV\HPCHEM1\BNA_F\METHODS\8270-BF032321.M
 Quant Title : ASP BNA STANDARDS FOR 5 POINT CALIBRATION
 QLast Update : Fri Mar 26 12:51:59 2021
 Response via : Initial Calibration

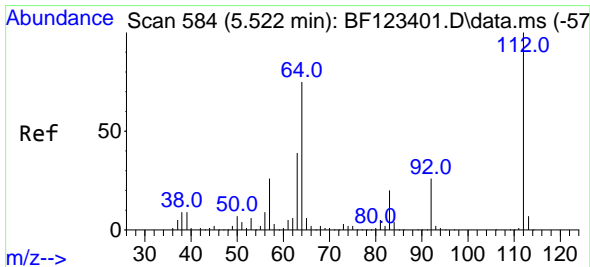
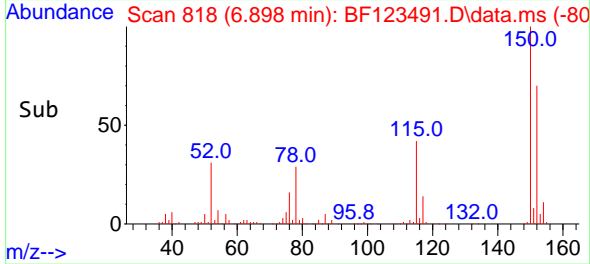
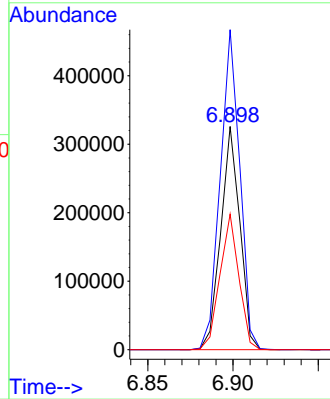
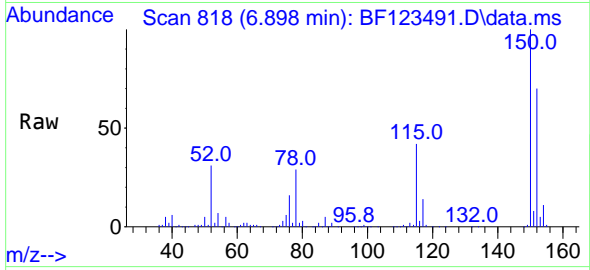




#1
 1,4-Dichlorobenzene-d4
 Concen: 20.00 ng
 RT: 6.898 min Scan# 818
 Delta R.T. 0.000 min
 Lab File: BF123491.D
 Acq: 26 Mar 2021 17:50

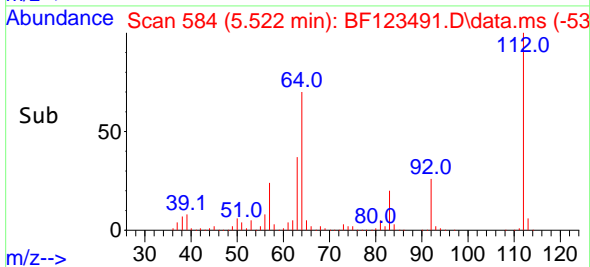
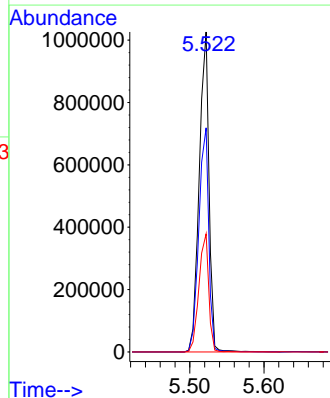
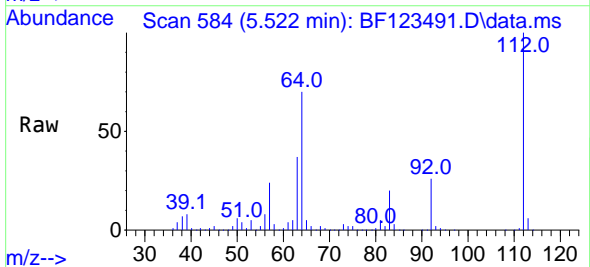
Instrument :
 BNA_F
 ClientSampled :
 MW-102S

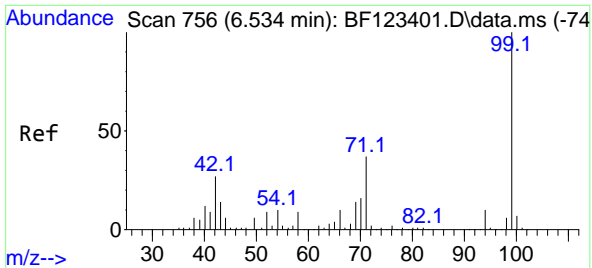
Tgt Ion:152 Resp: 254579
 Ion Ratio Lower Upper
 152 100
 150 143.4 125.8 188.6
 115 60.7 49.3 73.9



#5
 2-Fluorophenol
 Concen: 60.33 ng
 RT: 5.522 min Scan# 584
 Delta R.T. 0.006 min
 Lab File: BF123491.D
 Acq: 26 Mar 2021 17:50

Tgt Ion:112 Resp: 938756
 Ion Ratio Lower Upper
 112 100
 64 70.1 46.9 70.3
 63 36.9 24.5 36.7#

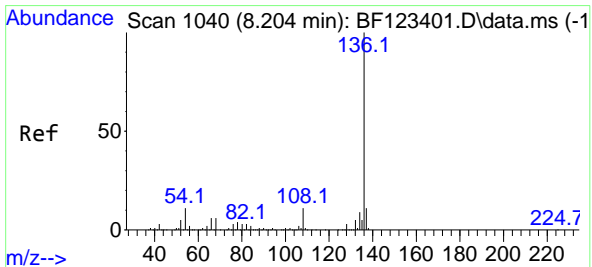
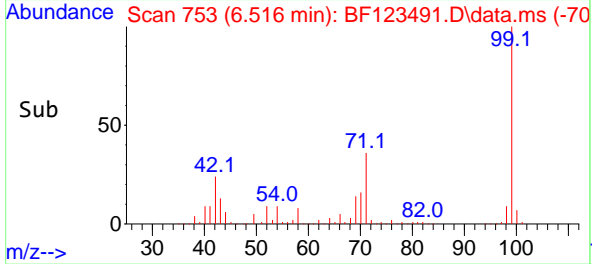
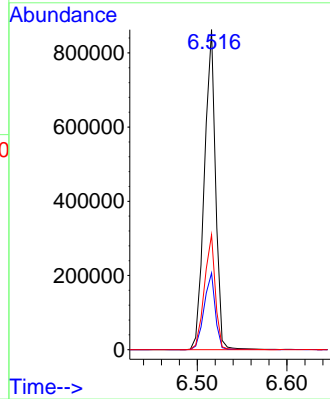
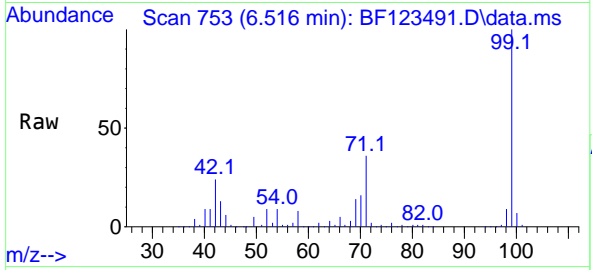




#7
Phenol-d6
Concen: 36.04 ng
RT: 6.516 min Scan# 753
Delta R.T. -0.012 min
Lab File: BF123491.D
Acq: 26 Mar 2021 17:50

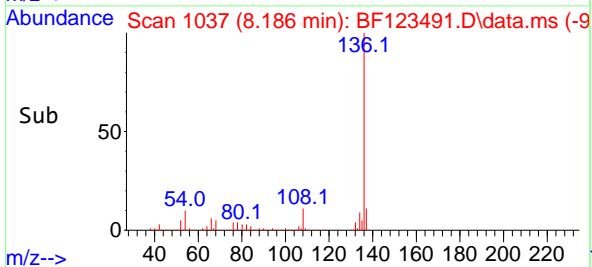
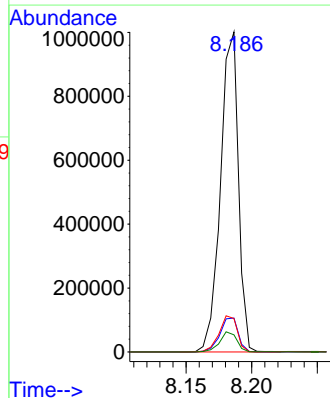
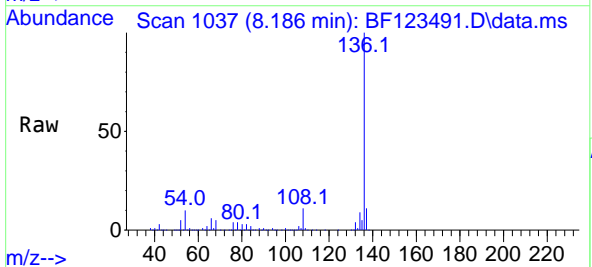
Instrument :
BNA_F
ClientSampled :
MW-102S

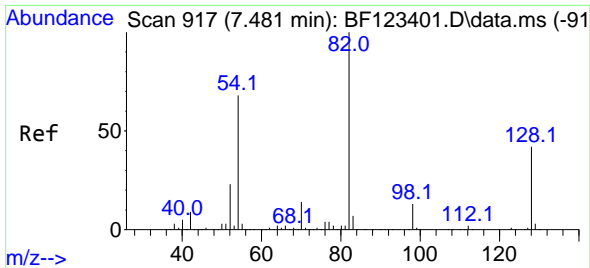
Tgt Ion: 99 Resp: 746524
Ion Ratio Lower Upper
99 100
42 24.0 13.8 20.6#
71 35.9 26.9 40.3



#21
Naphthalene-d8
Concen: 20.00 ng
RT: 8.186 min Scan# 1037
Delta R.T. 0.000 min
Lab File: BF123491.D
Acq: 26 Mar 2021 17:50

Tgt Ion: 136 Resp: 949604
Ion Ratio Lower Upper
136 100
137 10.6 8.8 13.2
54 10.5 5.5 8.3#
68 5.3 4.6 6.8



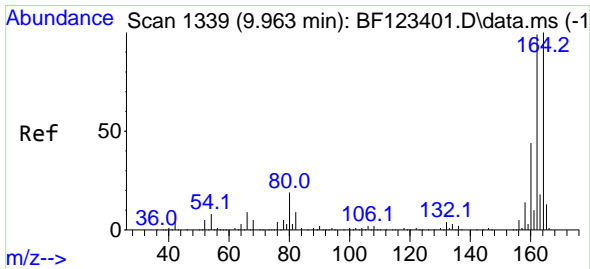
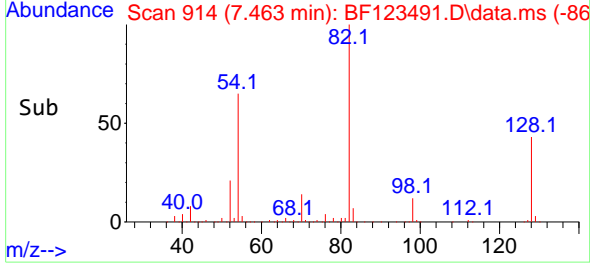
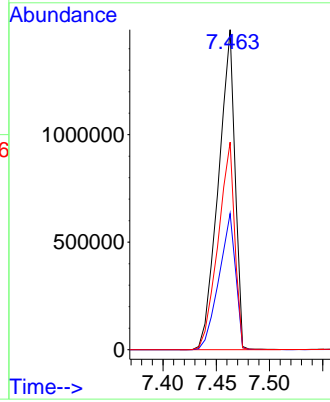
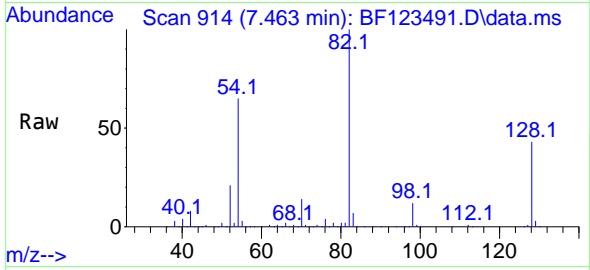


#23
 Nitrobenzene-d5
 Concen: 91.61 ng
 RT: 7.463 min Scan# 914
 Delta R.T. 0.000 min
 Lab File: BF123491.D
 Acq: 26 Mar 2021 17:50

Instrument :
 BNA_F
 ClientSampled :
 MW-102S

Tgt Ion: 82 Resp: 1611934

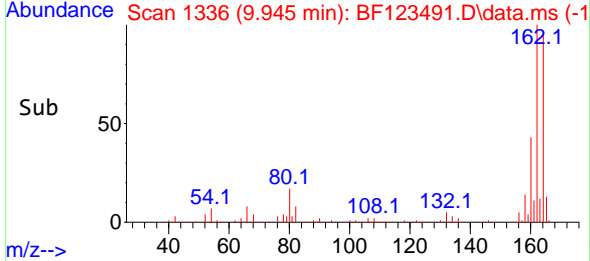
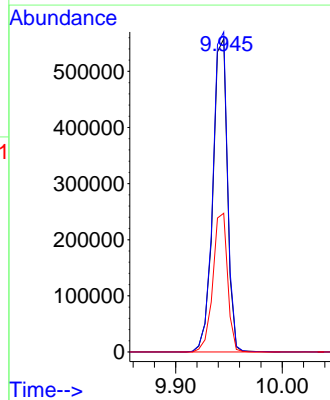
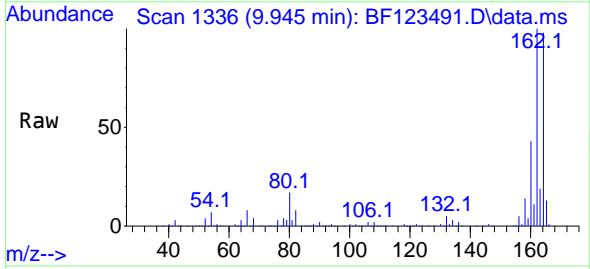
Ion	Ratio	Lower	Upper
82	100		
128	42.6	37.0	55.4
54	64.8	38.4	57.6#

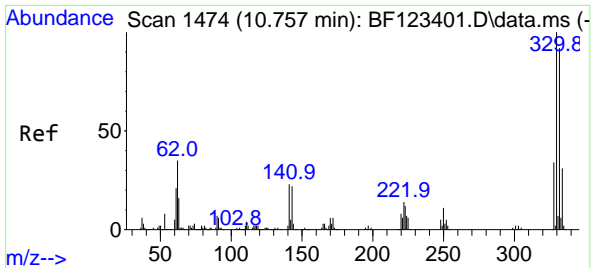


#39
 Acenaphthene-d10
 Concen: 20.00 ng
 RT: 9.945 min Scan# 1336
 Delta R.T. 0.000 min
 Lab File: BF123491.D
 Acq: 26 Mar 2021 17:50

Tgt Ion: 164 Resp: 529041

Ion	Ratio	Lower	Upper
164	100		
162	102.2	80.8	121.2
160	44.3	35.4	53.0



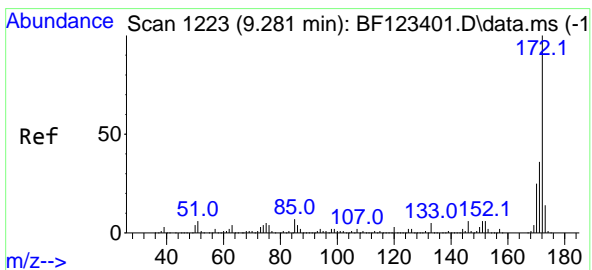
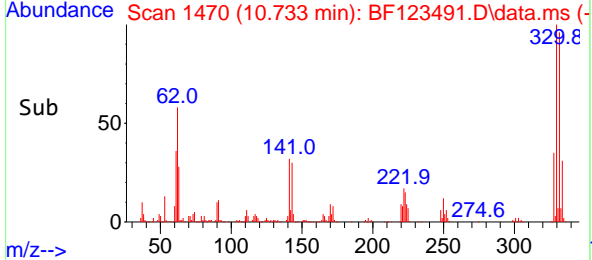
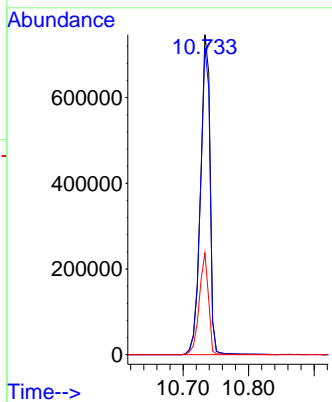
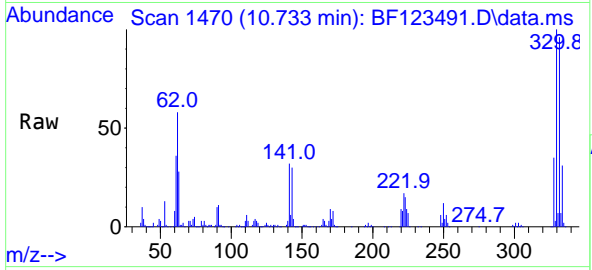


#42
 2,4,6-Tribromophenol
 Concen: 129.01 ng
 RT: 10.733 min Scan# 1470
 Delta R.T. -0.006 min
 Lab File: BF123491.D
 Acq: 26 Mar 2021 17:50

Instrument :
 BNA_F
ClientSampled :
 MW-102S

Tgt Ion: 330 Resp: 763067

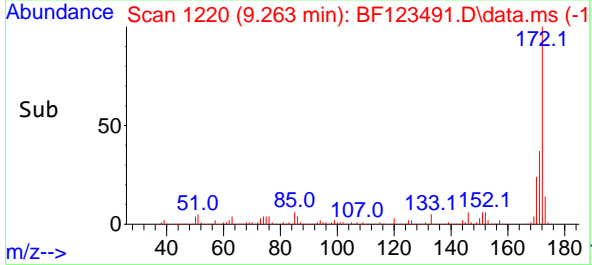
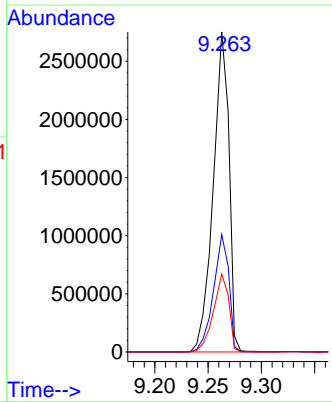
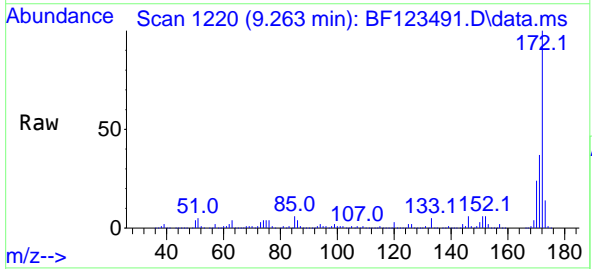
Ion	Ratio	Lower	Upper
330	100		
332	96.2	77.5	116.3
141	30.4	23.8	35.8

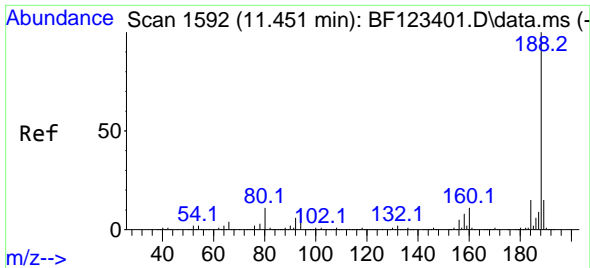


#45
 2-Fluorobiphenyl
 Concen: 76.17 ng
 RT: 9.263 min Scan# 1220
 Delta R.T. 0.000 min
 Lab File: BF123491.D
 Acq: 26 Mar 2021 17:50

Tgt Ion: 172 Resp: 2820790

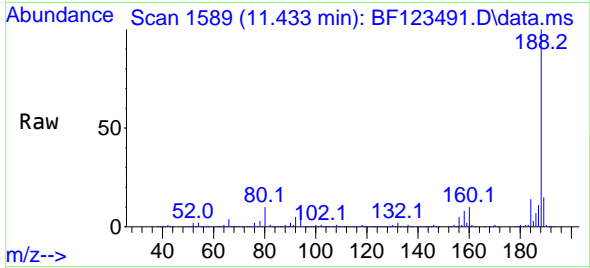
Ion	Ratio	Lower	Upper
172	100		
171	36.7	29.6	44.4
170	24.4	19.5	29.3



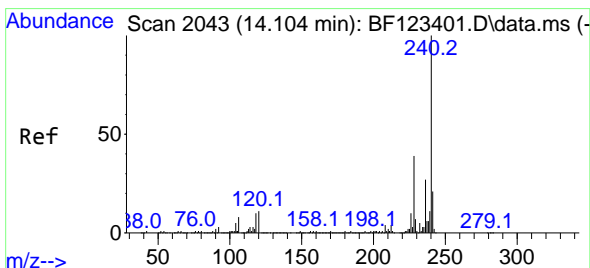
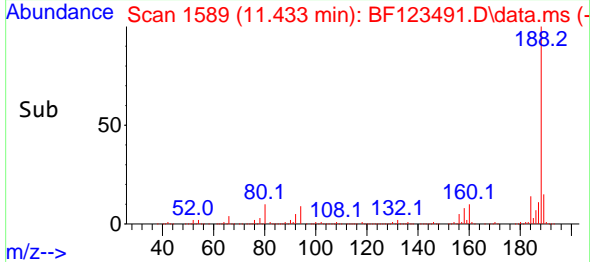
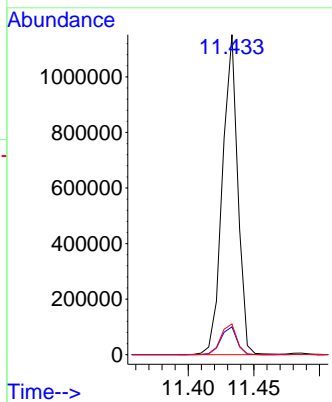


#64
 Phenanthrene-d10
 Concen: 20.00 ng
 RT: 11.433 min Scan# 1589
 Delta R.T. 0.000 min
 Lab File: BF123491.D
 Acq: 26 Mar 2021 17:50

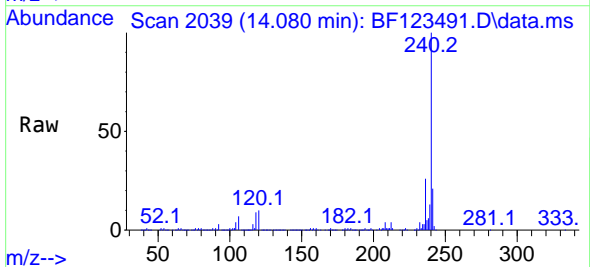
Instrument :
 BNA_F
 ClientSampled :
 MW-102S



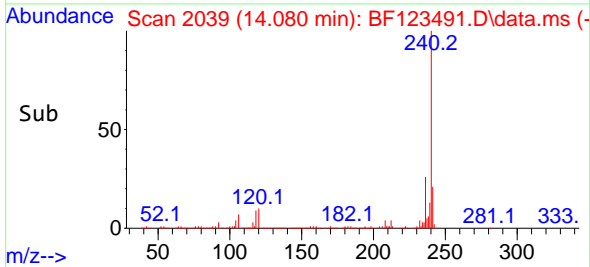
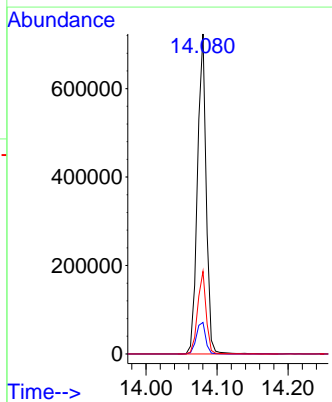
Tgt Ion:188 Resp: 936904
 Ion Ratio Lower Upper
 188 100
 94 8.7 7.4 11.2
 80 9.6 8.2 12.4

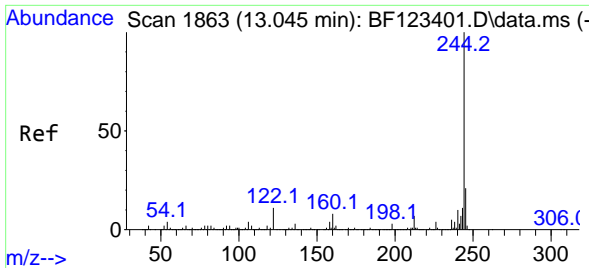


#76
 Chrysene-d12
 Concen: 20.00 ng
 RT: 14.080 min Scan# 2039
 Delta R.T. -0.006 min
 Lab File: BF123491.D
 Acq: 26 Mar 2021 17:50



Tgt Ion:240 Resp: 619243
 Ion Ratio Lower Upper
 240 100
 120 9.8 8.6 12.8
 236 25.8 20.3 30.5

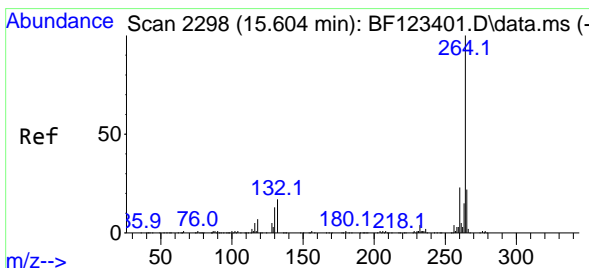
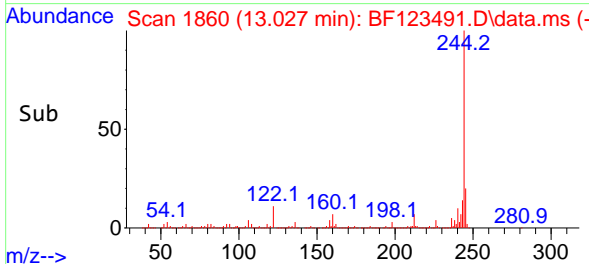
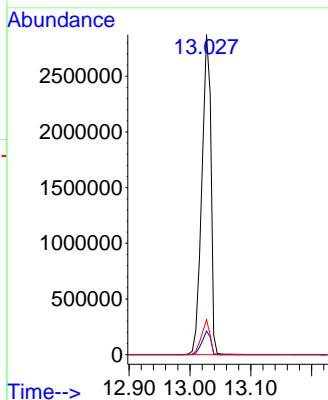
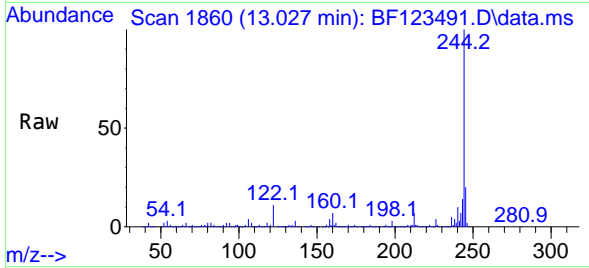




#79
 Terphenyl-d14
 Concen: 81.63 ng
 RT: 13.027 min Scan# 1860
 Delta R.T. 0.000 min
 Lab File: BF123491.D
 Acq: 26 Mar 2021 17:50

Instrument :
 BNA_F
 ClientSampled :
 MW-102S

Tgt Ion:244 Resp: 2982562
 Ion Ratio Lower Upper
 244 100
 212 7.4 5.7 8.5
 122 10.9 8.3 12.5



#86
 Perylene-d12
 Concen: 20.00 ng
 RT: 15.574 min Scan# 2293
 Delta R.T. -0.006 min
 Lab File: BF123491.D
 Acq: 26 Mar 2021 17:50

Tgt Ion:264 Resp: 470980
 Ion Ratio Lower Upper
 264 100
 260 22.7 18.6 28.0
 265 22.0 17.0 25.6

