

Data Path : Z:\HPCHEM1\BNA_F\DATA\BF032715\
 Data File : BF078041.D
 Acq On : 27 Mar 2015 17:22
 Operator : TP/IZ
 Sample : G1642-13
 Misc :
 ALS Vial : 7 Sample Multiplier: 1

Instrument :
 BNA_F
 ClientSampleId :
 MW-14

Quant Time: Mar 28 04:27:06 2015
 Quant Method : Z:\HPCHEM1\BNA_F\METHODS\8270-BF031115.M
 Quant Title : ASP BNA STANDARDS FOR 5 POINT CALIBRATION
 QLast Update : Sat Mar 28 05:12:59 2015
 Response via : Initial Calibration

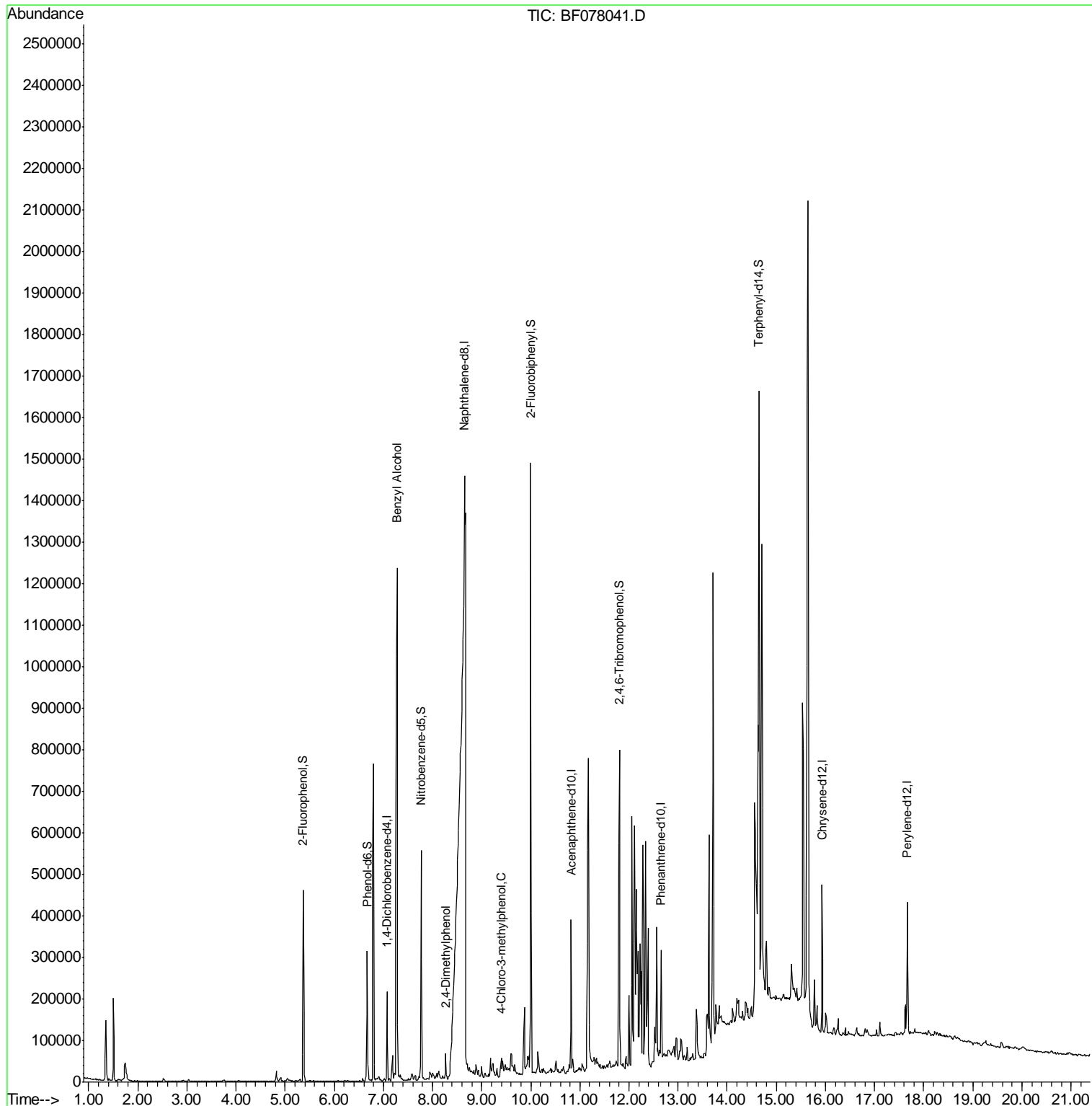
Internal Standards	R.T.	QIon	Response	Conc	Units	Dev(Min)
1) 1,4-Dichlorobenzene-d4	7.07	152	36507	20.00	ng	0.00
21) Naphthalene-d8	8.65	136	134654	20.00	ng	0.00
38) Acenaphthene-d10	10.82	164	72330	20.00	ng	0.00
63) Phenanthrene-d10	12.65	188	140261	20.00	ng	-0.01
75) Chrysene-d12	15.93	240	150715	20.00	ng	0.00
86) Perylene-d12	17.67	264	140934	20.00	ng	0.05
System Monitoring Compounds						
5) 2-Fluorophenol	5.37	112	150791	72.10	ng	0.00
7) Phenol-d6	6.67	99	124284	48.10	ng	0.00
23) Nitrobenzene-d5	7.77	82	209232	101.86	ng	-0.01
41) 2,4,6-Tribromophenol	11.80	330	101531	146.71	ng	0.00
44) 2-Fluorobiphenyl	10.00	172	470892	95.68	ng	0.00
78) Terphenyl-d14	14.65	244	483669	78.39	ng	0.00
Target Compounds						
15) Benzyl Alcohol	7.28	79	256265	127.05	ng	96
27) 2,4-Dimethylphenol	8.27	122	12649	6.41	ng	99
36) 4-Chloro-3-methylphenol	9.40	107	5284	2.79	ng	# 14
76) Benzidine	14.32	184	306	Below Cal		# 42

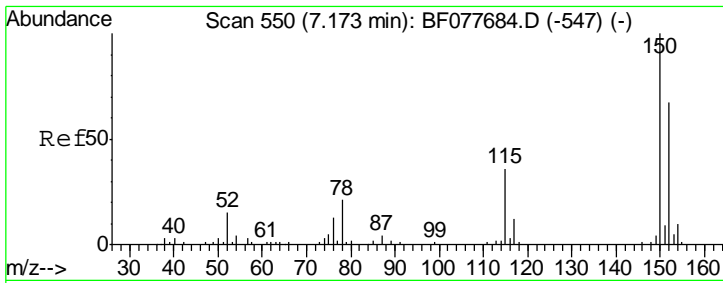
(#) = qualifier out of range (m) = manual integration (+) = signals summed

Data Path : Z:\HPCHEM1\BNA_F\DATA\BF032715\
 Data File : BF078041.D
 Acq On : 27 Mar 2015 17:22
 Operator : TP/IZ
 Sample : G1642-13
 Misc :
 ALS Vial : 7 Sample Multiplier: 1

Instrument :
 BNA_F
 ClientSampleId :
 MW-14

Quant Time: Mar 28 04:27:06 2015
 Quant Method : Z:\HPCHEM1\BNA_F\METHODS\8270-BF031115.M
 Quant Title : ASP BNA STANDARDS FOR 5 POINT CALIBRATION
 QLast Update : Sat Mar 28 05:12:59 2015
 Response via : Initial Calibration

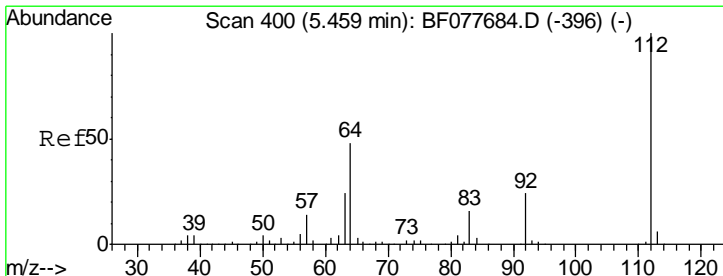
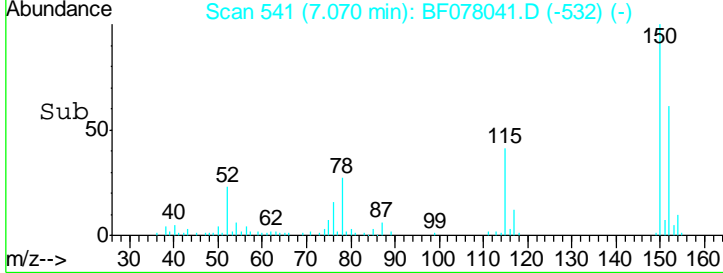
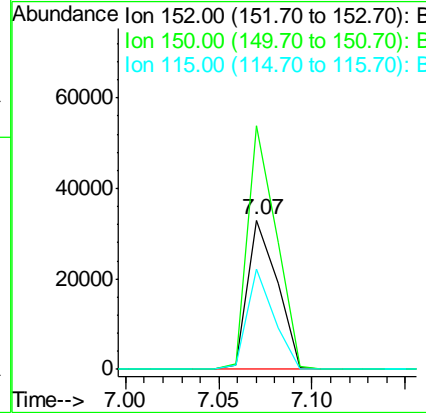
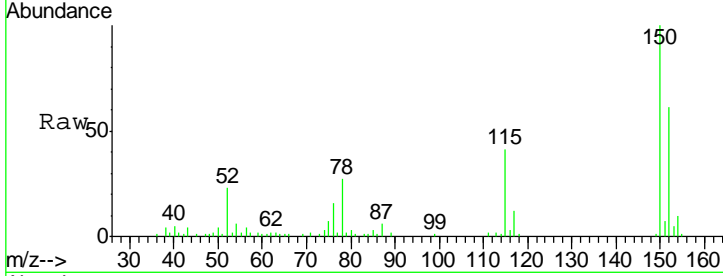




#1
 1,4-Dichlorobenzene-d4
 Concen: 20.00 ng
 RT: 7.07 min Scan# 541
 Delta R.T. -0.00 min
 Lab File: BF078041.D
 Acq: 27 Mar 2015 17:22

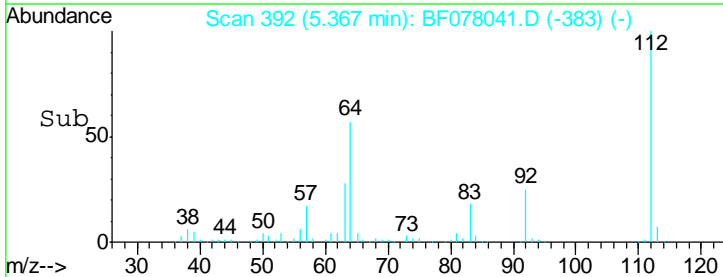
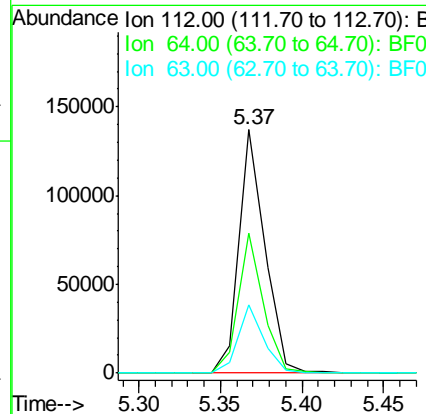
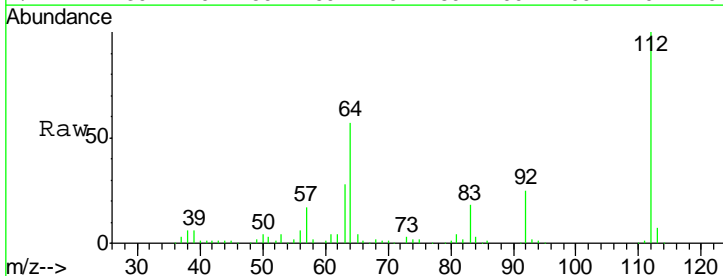
Instrument :
 BNA_F
ClientSampled :
 MW-14

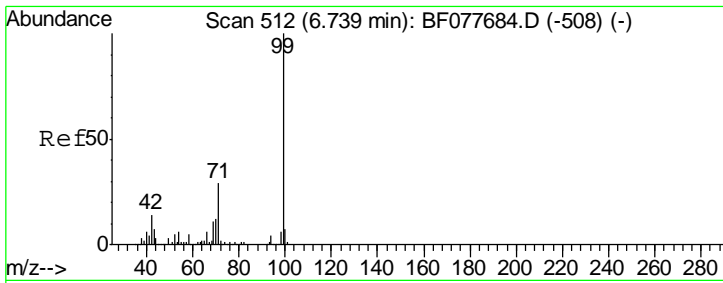
Tgt Ion	Resp	Lower	Upper
152	36507		
150	163.4	119.5	179.3
115	67.6	43.0	64.4



#5
 2-Fluorophenol
 Concen: 72.10 ng
 RT: 5.37 min Scan# 392
 Delta R.T. -0.00 min
 Lab File: BF078041.D
 Acq: 27 Mar 2015 17:22

Tgt Ion	Resp	Lower	Upper
112	150791		
64	57.3	38.6	57.8
63	28.1	19.3	28.9

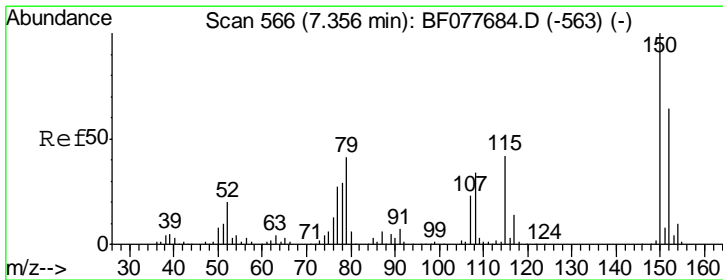
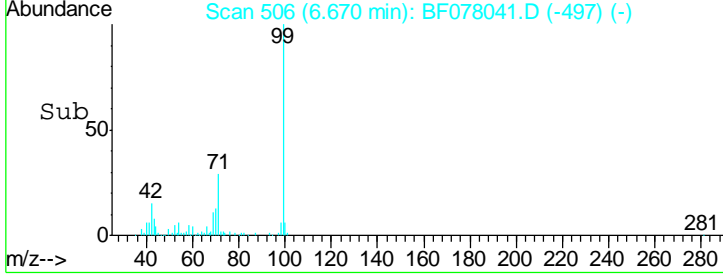
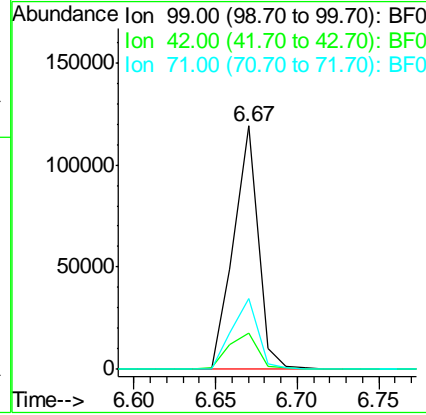
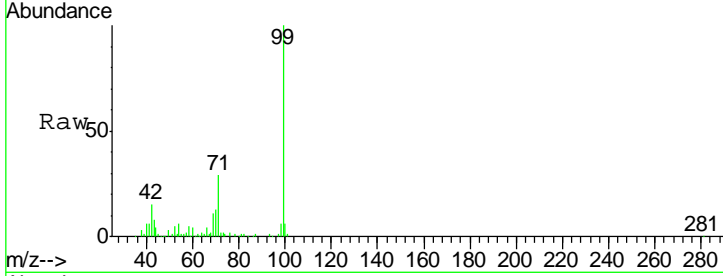




#7
 Phenol-d6
 Concen: 48.10 ng
 RT: 6.67 min Scan# 506
 Delta R.T. -0.00 min
 Lab File: BF078041.D
 Acq: 27 Mar 2015 17:22

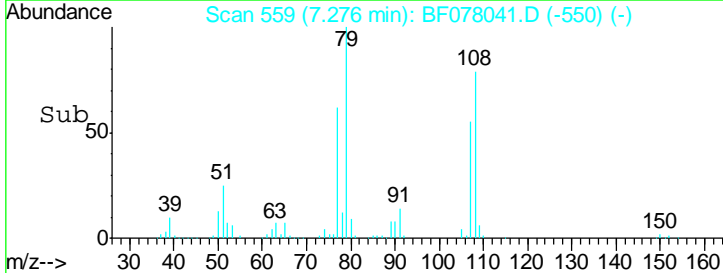
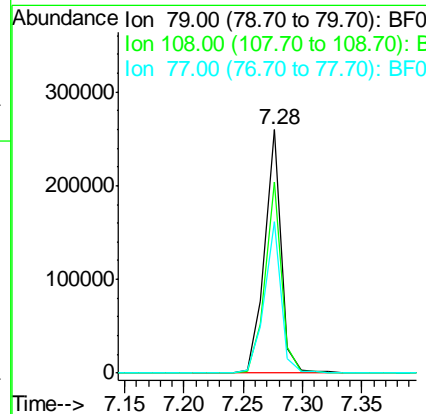
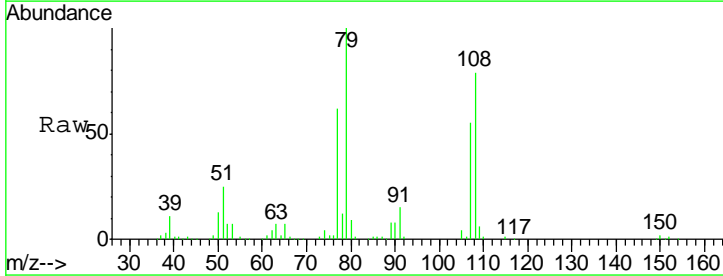
Instrument :
 BNA_F
 ClientSampled :
 MW-14

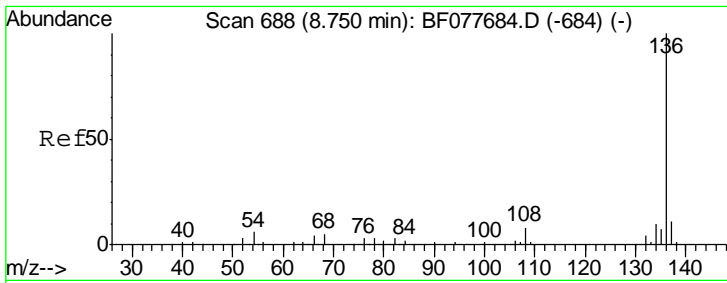
Tgt Ion	Resp	Lower	Upper
99	124284		
42	15.1	11.0	16.4
71	29.2	23.4	35.2



#15
 Benzyl Alcohol
 Concen: 127.05 ng
 RT: 7.28 min Scan# 559
 Delta R.T. -0.00 min
 Lab File: BF078041.D
 Acq: 27 Mar 2015 17:22

Tgt Ion	Resp	Lower	Upper
79	256265		
108	78.5	65.0	97.4
77	62.2	53.0	79.6



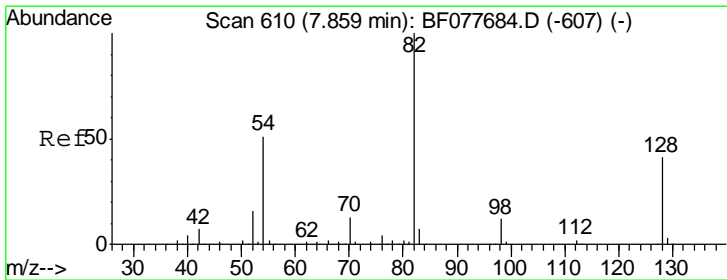
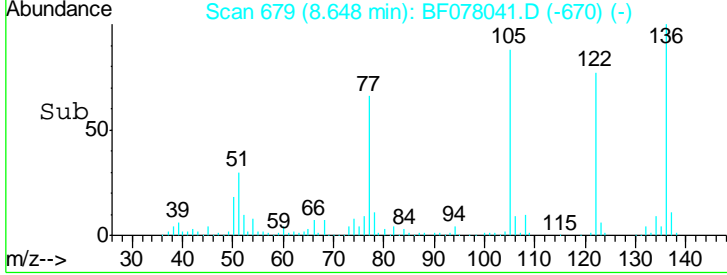
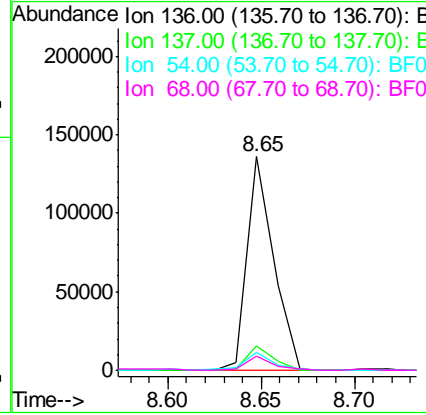
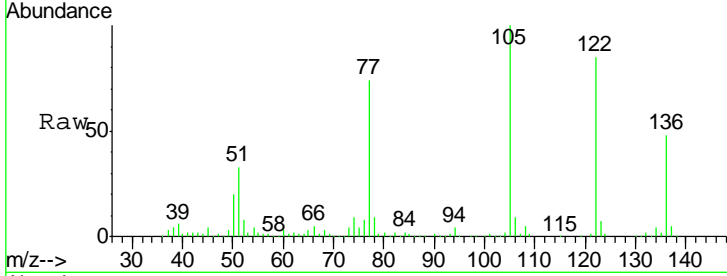


#21
 Naphthalene-d8
 Concen: 20.00 ng
 RT: 8.65 min Scan# 679
 Delta R.T. -0.00 min
 Lab File: BF078041.D
 Acq: 27 Mar 2015 17:22

Instrument :
 BNA_F
ClientSampled :
 MW-14

Tgt Ion: 136 Resp: 134654

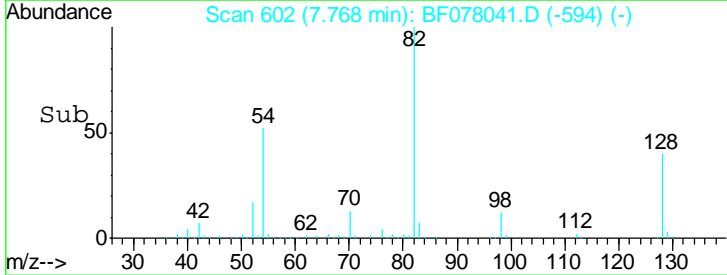
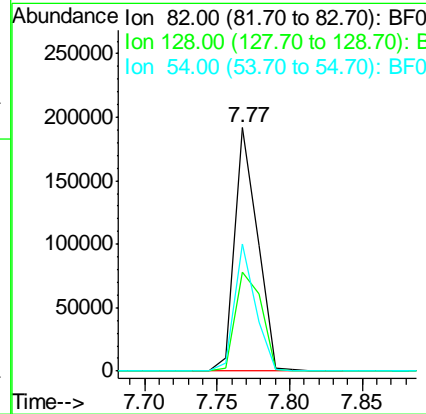
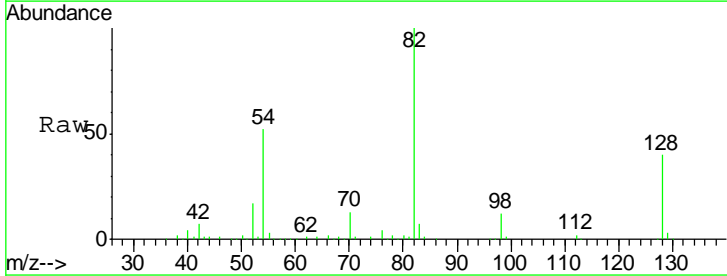
Ion	Ratio	Lower	Upper
136	100		
137	11.1	8.7	13.1
54	8.1	4.6	6.8#
68	6.9	3.7	5.5#

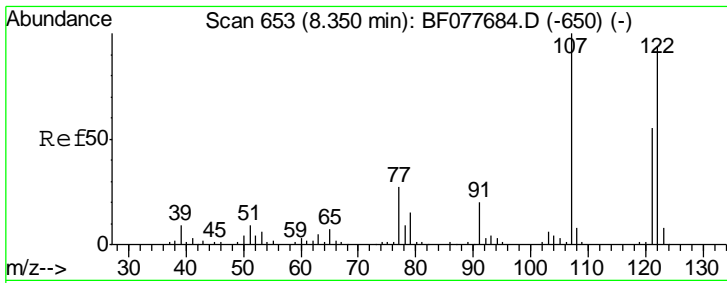


#23
 Nitrobenzene-d5
 Concen: 101.86 ng
 RT: 7.77 min Scan# 602
 Delta R.T. -0.01 min
 Lab File: BF078041.D
 Acq: 27 Mar 2015 17:22

Tgt Ion: 82 Resp: 209232

Ion	Ratio	Lower	Upper
82	100		
128	40.5	32.8	49.2
54	52.2	40.6	60.8

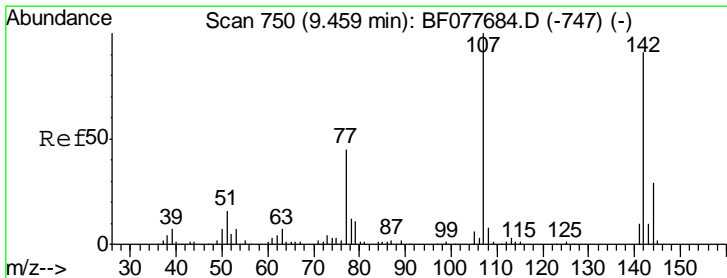
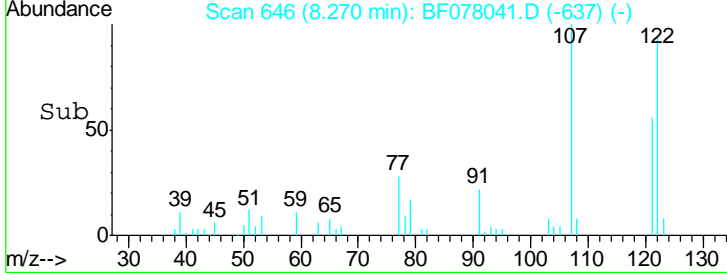
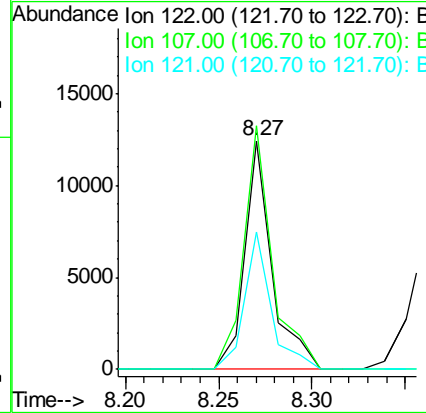
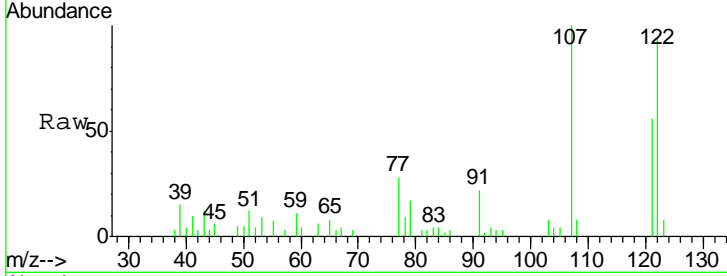




#27
 2,4-Dimethylphenol
 Concen: 6.41 ng
 RT: 8.27 min Scan# 646
 Delta R.T. -0.00 min
 Lab File: BF078041.D
 Acq: 27 Mar 2015 17:22

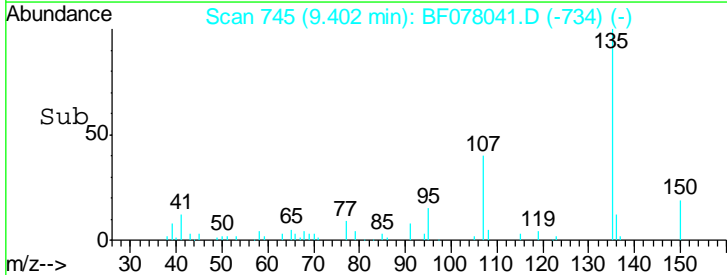
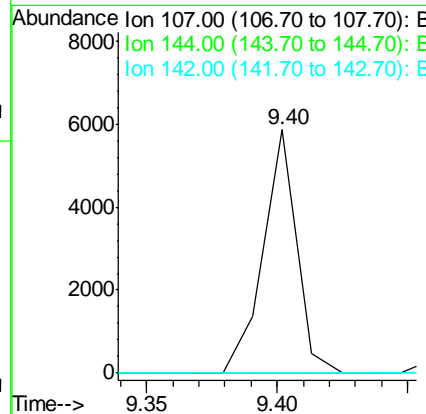
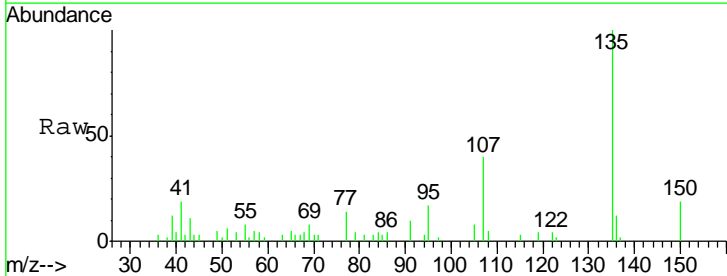
Instrument :
 BNA_F
 ClientSampled :
 MW-14

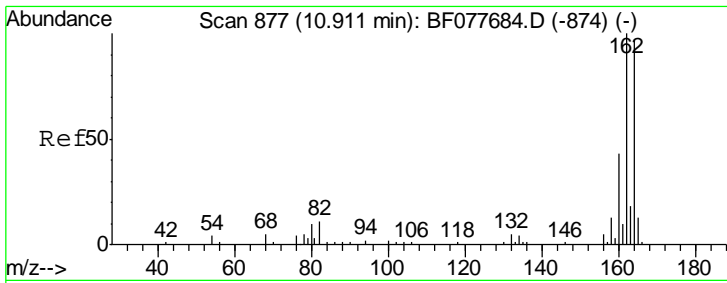
Tgt Ion	Resp	Lower	Upper
122	12649		
107	106.4	84.7	127.1
121	59.9	46.6	69.8



#36
 4-Chloro-3-methylphenol
 Concen: 2.79 ng
 RT: 9.40 min Scan# 745
 Delta R.T. 0.02 min
 Lab File: BF078041.D
 Acq: 27 Mar 2015 17:22

Tgt Ion	Resp	Lower	Upper
107	5284		
144	0.0	23.3	34.9#
142	0.0	72.6	109.0#

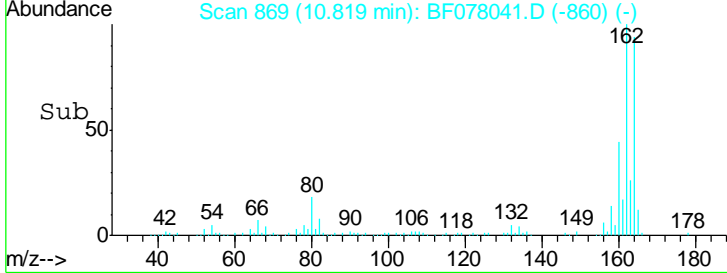
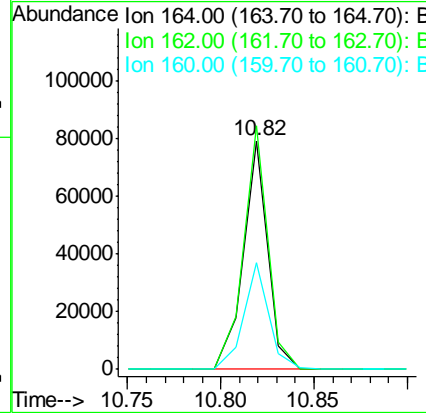
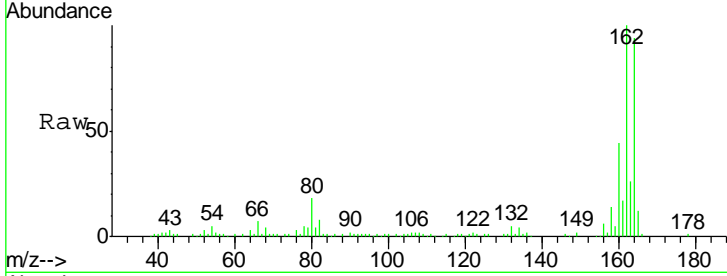




#38
 Acenaphthene-d10
 Concen: 20.00 ng
 RT: 10.82 min Scan# 869
 Delta R.T. -0.00 min
 Lab File: BF078041.D
 Acq: 27 Mar 2015 17:22

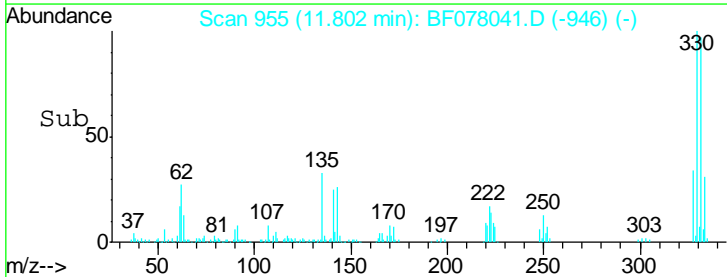
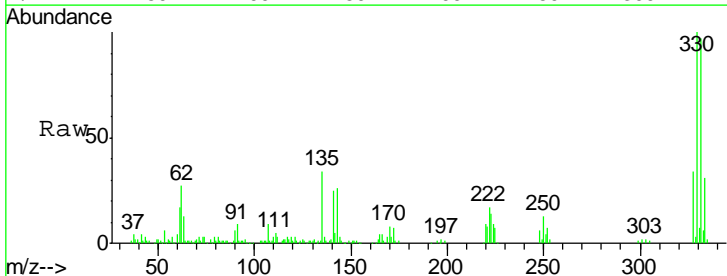
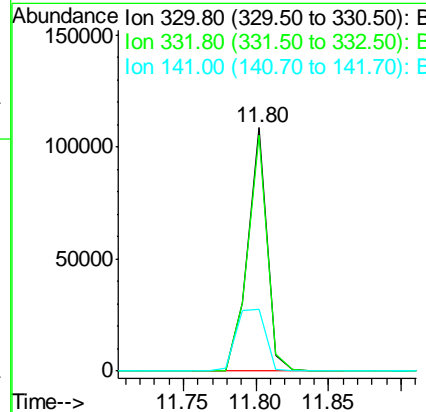
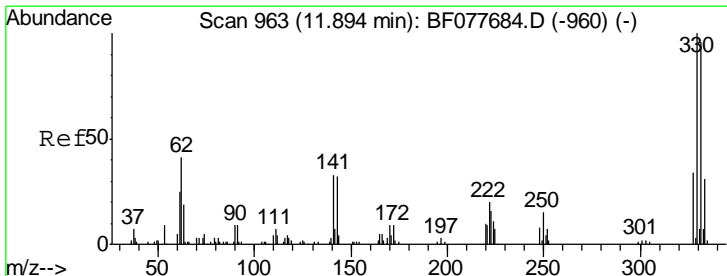
Instrument :
 BNA_F
 ClientSampled :
 MW-14

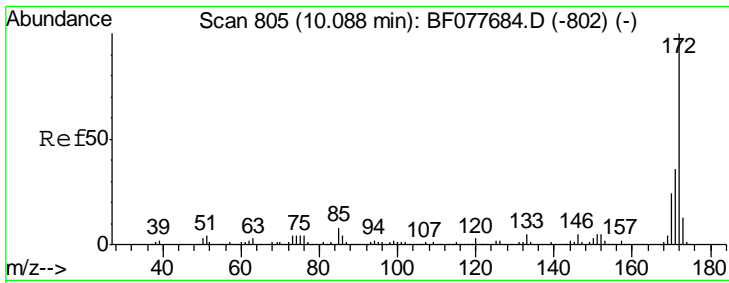
Tgt Ion	Resp	Lower	Upper
164	100		
162	106.4	82.4	123.6
160	46.4	35.8	53.6



#41
 2,4,6-Tribromophenol
 Concen: 146.71 ng
 RT: 11.80 min Scan# 955
 Delta R.T. -0.00 min
 Lab File: BF078041.D
 Acq: 27 Mar 2015 17:22

Tgt Ion	Resp	Lower	Upper
330	100		
332	97.4	0.0	0.0#
141	39.1	0.0	0.0#

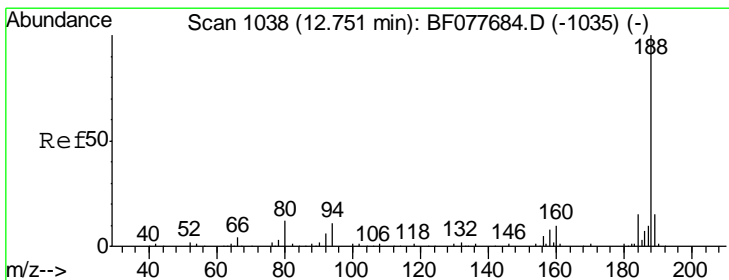
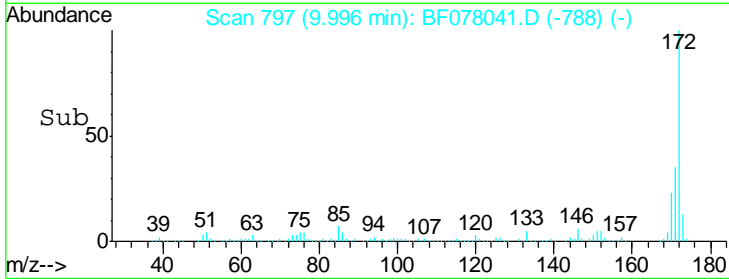
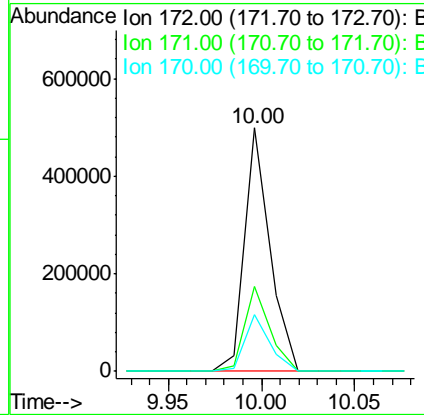
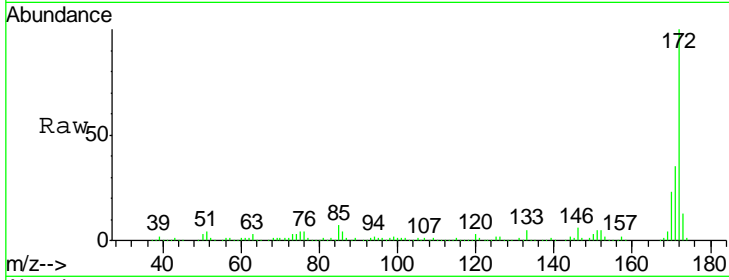




#44
 2-Fluorobiphenyl
 Concen: 95.68 ng
 RT: 10.00 min Scan# 797
 Delta R.T. -0.00 min
 Lab File: BF078041.D
 Acq: 27 Mar 2015 17:22

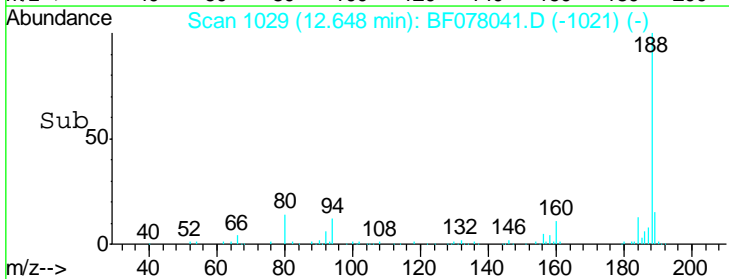
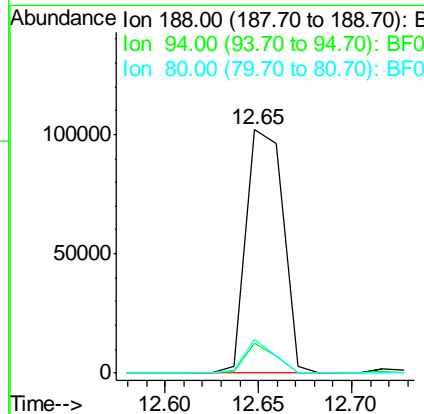
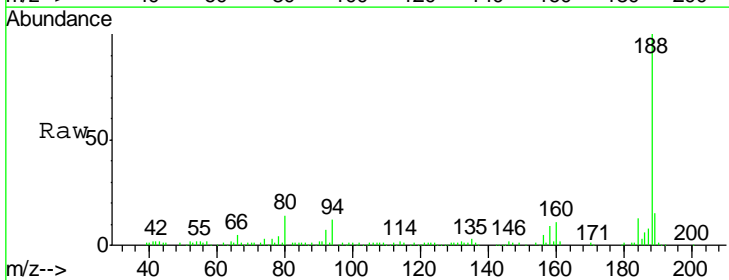
Instrument :
 BNA_F
ClientSampled :
 MW-14

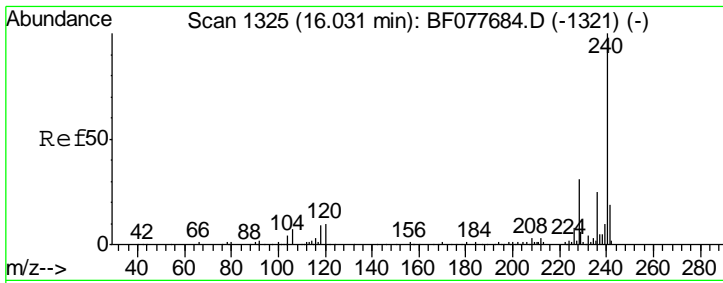
Tgt Ion	Resp	Lower	Upper
172	470892		
171	34.8	28.5	42.7
170	23.3	18.8	28.2



#63
 Phenanthrene-d10
 Concen: 20.00 ng
 RT: 12.65 min Scan# 1029
 Delta R.T. -0.01 min
 Lab File: BF078041.D
 Acq: 27 Mar 2015 17:22

Tgt Ion	Resp	Lower	Upper
188	140261		
94	12.5	8.7	13.1
80	13.8	9.3	13.9

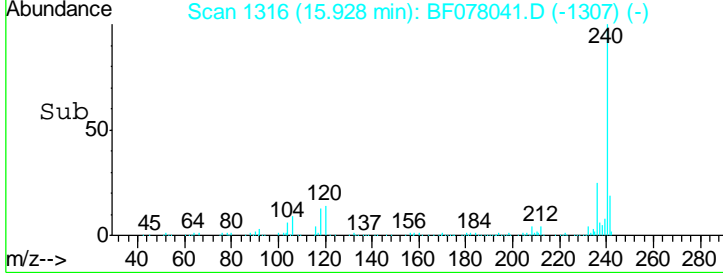
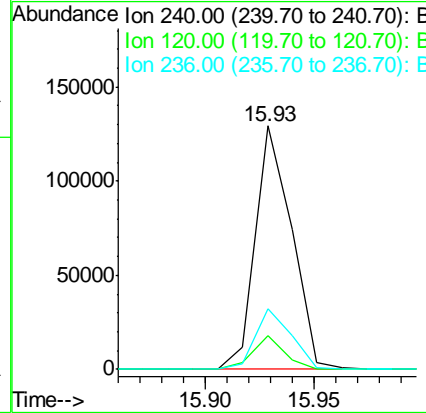
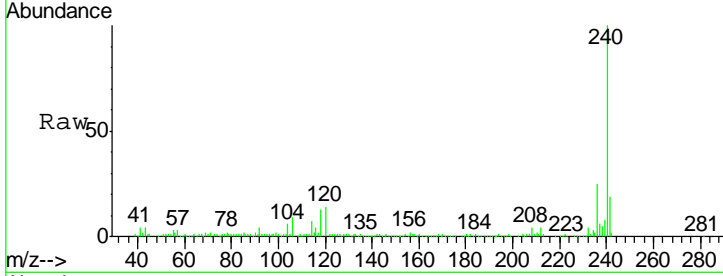




#75
 Chrysene-d12
 Concen: 20.00 ng
 RT: 15.93 min Scan# 1316
 Delta R.T. -0.00 min
 Lab File: BF078041.D
 Acq: 27 Mar 2015 17:22

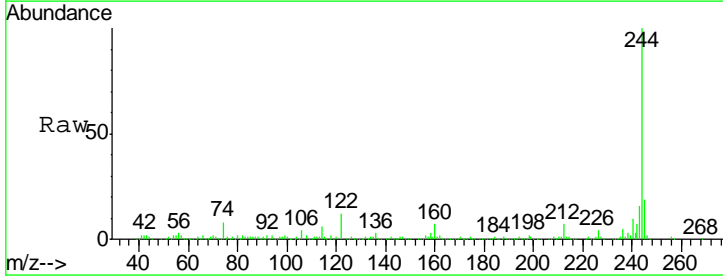
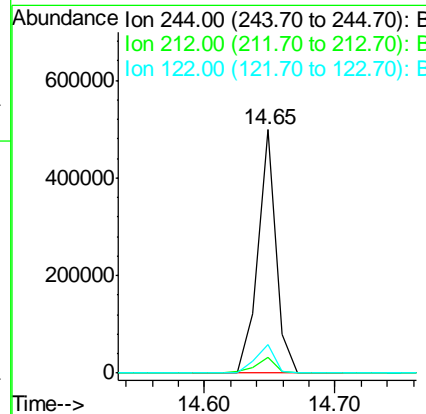
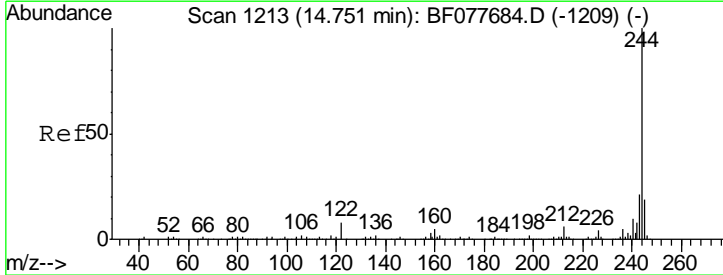
Instrument :
 BNA_F
 ClientSampled :
 MW-14

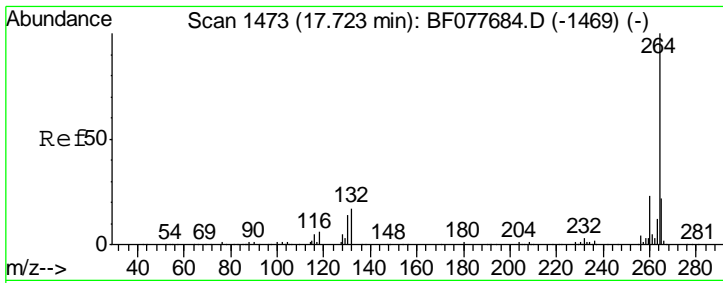
Tgt Ion	Resp	Lower	Upper
240	150715		
120	14.1	8.2	12.2#
236	25.0	20.0	30.0



#78
 Terphenyl-d14
 Concen: 78.39 ng
 RT: 14.65 min Scan# 1204
 Delta R.T. -0.00 min
 Lab File: BF078041.D
 Acq: 27 Mar 2015 17:22

Tgt Ion	Resp	Lower	Upper
244	483669		
212	6.7	4.9	7.3
122	11.5	6.2	9.4#

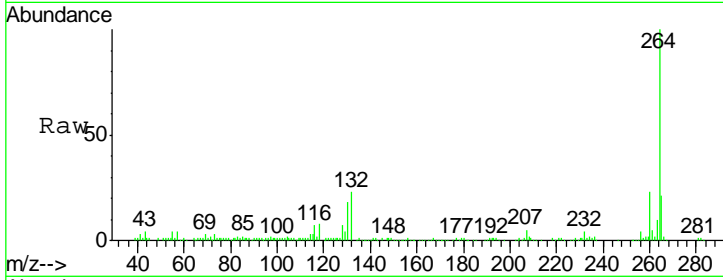




#86
 Perylene-d12
 Concen: 20.00 ng
 RT: 17.67 min Scan# 1468
 Delta R.T. 0.05 min
 Lab File: BF078041.D
 Acq: 27 Mar 2015 17:22

Instrument :
 BNA_F
 ClientSampled :
 MW-14

Tgt Ion	Resp	Lower	Upper
264	140934		
260	23.0	18.6	27.8
265	20.8	17.3	25.9



Abundance Ion 264.00 (263.70 to 264.70): E
 Ion 260.00 (259.70 to 260.70): E
 Ion 265.00 (264.70 to 265.70): E

