

Data Path : Z:\svoasrv\HPCHEM1\BNA_F\Data\BF032725\
 Data File : BF142140.D
 Acq On : 27 Mar 2025 22:40
 Operator : RC/JU
 Sample : Q1648-12
 Misc :
 ALS Vial : 15 Sample Multiplier: 1

Instrument :
 BNA_F
 ClientSampleId :
 TP-8

Quant Time: Mar 28 01:58:18 2025
 Quant Method : Z:\svoasrv\HPCHEM1\BNA_F\Methods\8270-BF031025.M
 Quant Title : ASP BNA STANDARDS FOR 5 POINT CALIBRATION
 QLast Update : Mon Mar 10 15:46:22 2025
 Response via : Initial Calibration

Compound	R.T.	QIon	Response	Conc	Units	Dev(Min)

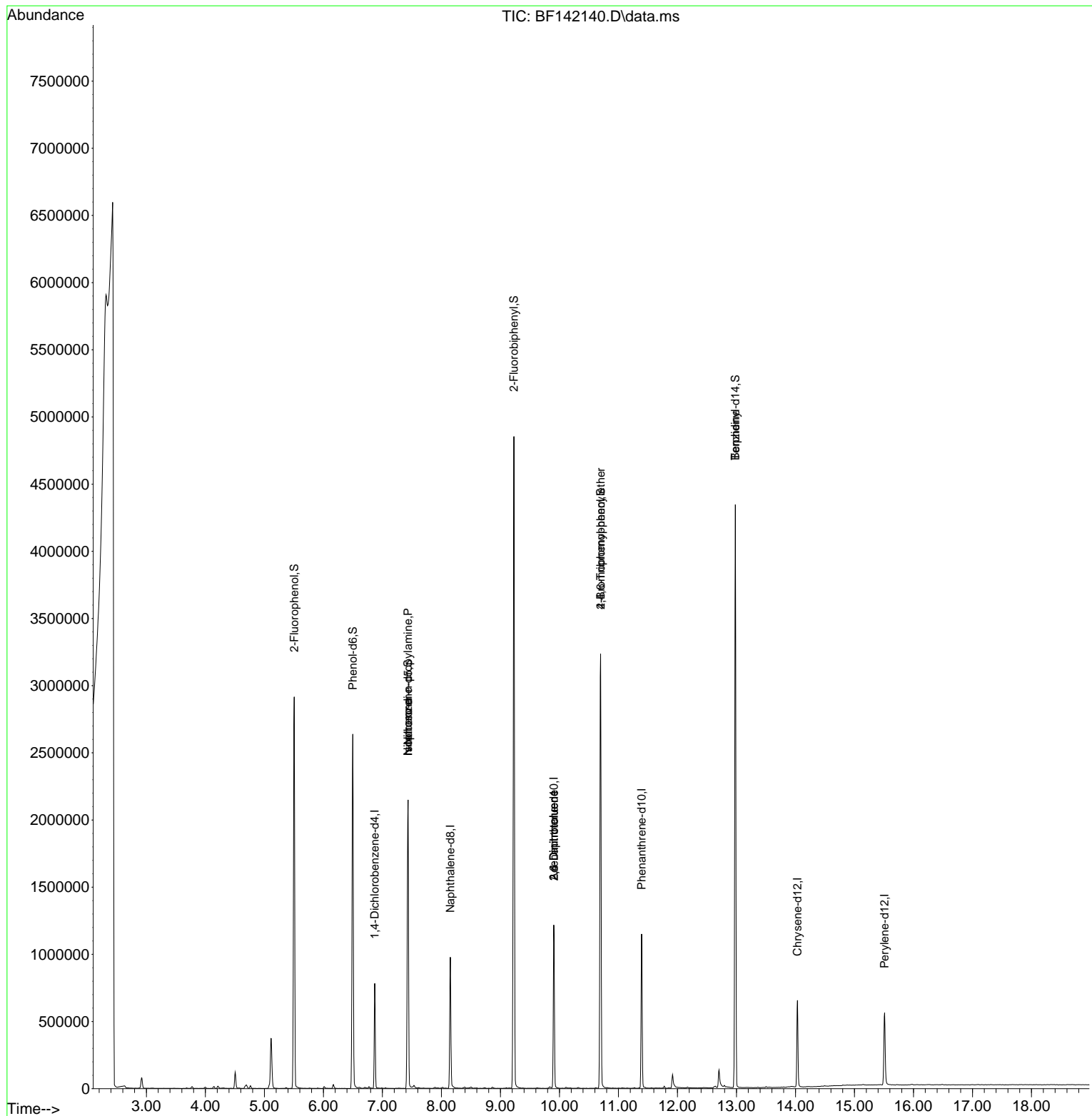
Internal Standards						
1) 1,4-Dichlorobenzene-d4	6.869	152	165654	20.000	ng	-0.01
21) Naphthalene-d8	8.151	136	658734	20.000	ng	-0.01
39) Acenaphthene-d10	9.904	164	375866	20.000	ng	-0.01
64) Phenanthrene-d10	11.392	188	594037	20.000	ng	-0.01
76) Chrysene-d12	14.033	240	336163	20.000	ng	0.00
86) Perylene-d12	15.510	264	345220	20.000	ng	0.00
System Monitoring Compounds						
5) 2-Fluorophenol	5.504	112	1209669	121.874	ng	0.01
7) Phenol-d6	6.498	99	1380651	109.251	ng	0.00
23) Nitrobenzene-d5	7.434	82	1076752	91.987	ng	-0.01
42) 2,4,6-Tribromophenol	10.698	330	657309	137.848	ng	0.00
45) 2-Fluorobiphenyl	9.228	172	2261128	91.489	ng	-0.01
79) Terphenyl-d14	12.980	244	2156340	94.836	ng	0.00
Target Compounds						
19) n-Nitroso-di-n-propyla...	7.434	70	148215	18.252	ng	# 77
25) Isophorone	7.434	82	1062803	51.365	ng	# 64
51) 2,6-Dinitrotoluene	9.904	165	48889	8.921	ng	# 23
57) 2,4-Dinitrotoluene	9.904	165	48889	6.830	ng	# 24
67) 4-Bromophenyl-phenylether	10.698	248	41116	5.511	ng	# 1
77) Benzidine	12.980	184	28923	6.167	ng	# 92

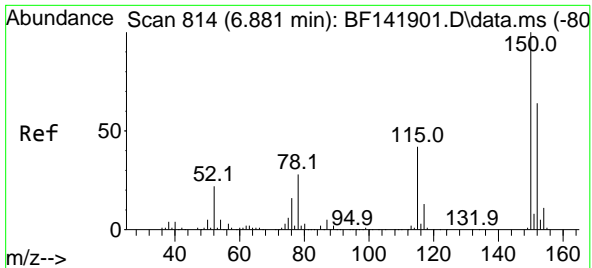
(#) = qualifier out of range (m) = manual integration (+) = signals summed

Data Path : Z:\svoasrv\HPCHEM1\BNA_F\Data\BF032725\
 Data File : BF142140.D
 Acq On : 27 Mar 2025 22:40
 Operator : RC/JU
 Sample : Q1648-12
 Misc :
 ALS Vial : 15 Sample Multiplier: 1

Instrument :
 BNA_F
 ClientSampleId :
 TP-8

Quant Time: Mar 28 01:58:18 2025
 Quant Method : Z:\svoasrv\HPCHEM1\BNA_F\Methods\8270-BF031025.M
 Quant Title : ASP BNA STANDARDS FOR 5 POINT CALIBRATION
 QLast Update : Mon Mar 10 15:46:22 2025
 Response via : Initial Calibration

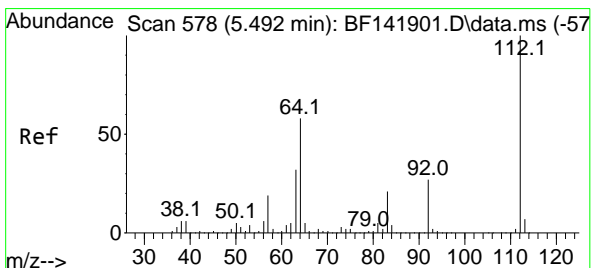
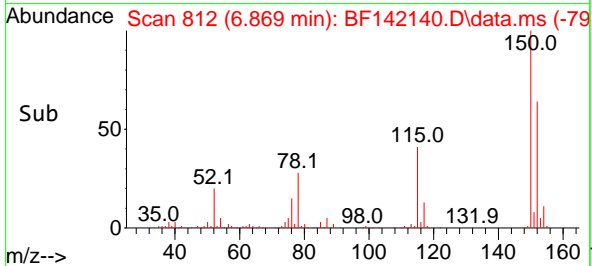
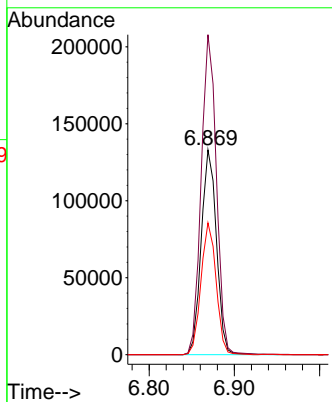
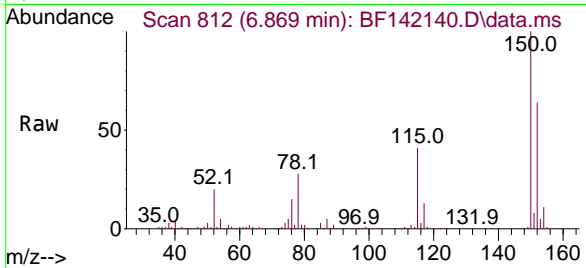




#1
 1,4-Dichlorobenzene-d4
 Concen: 20.000 ng
 RT: 6.869 min Scan# 81
 Delta R.T. -0.012 min
 Lab File: BF142140.D
 Acq: 27 Mar 2025 22:40

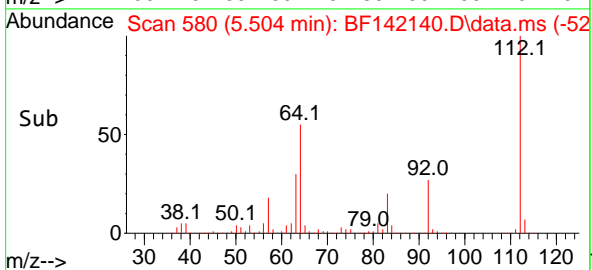
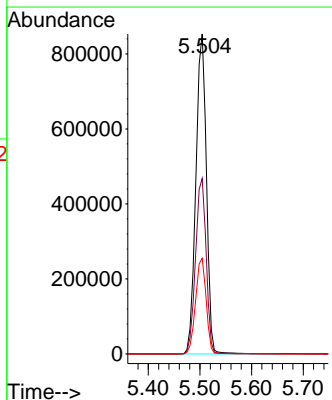
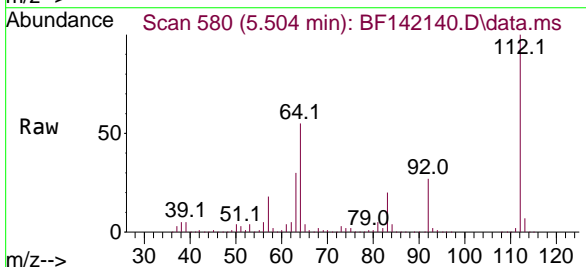
Instrument :
 BNA_F
 ClientSampleId :
 TP-8

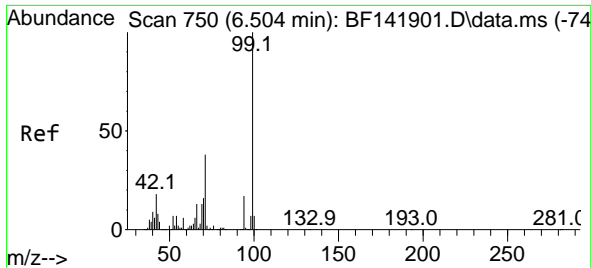
Tgt Ion:152 Resp: 165654
 Ion Ratio Lower Upper
 152 100
 150 156.2 127.4 191.2
 115 64.3 51.9 77.9



#5
 2-Fluorophenol
 Concen: 121.874 ng
 RT: 5.504 min Scan# 580
 Delta R.T. 0.012 min
 Lab File: BF142140.D
 Acq: 27 Mar 2025 22:40

Tgt Ion:112 Resp: 1209669
 Ion Ratio Lower Upper
 112 100
 64 54.8 46.5 69.7
 63 29.9 25.4 38.2

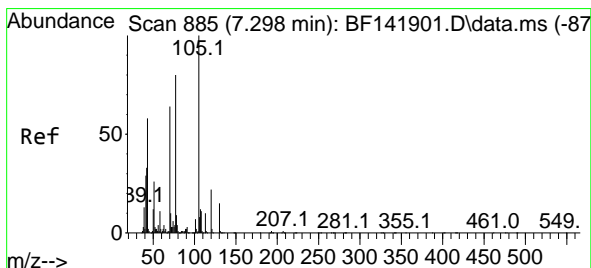
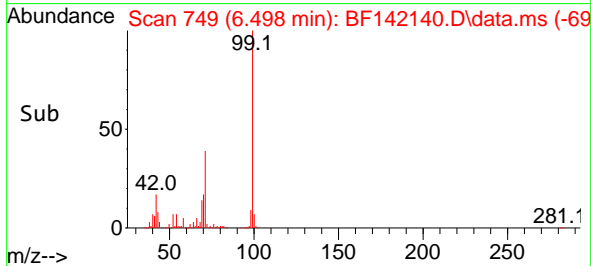
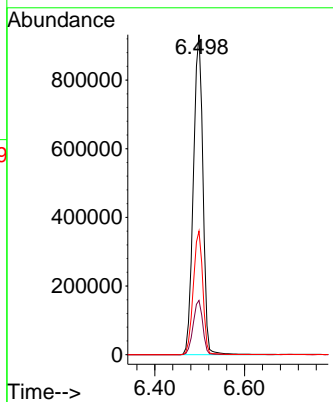
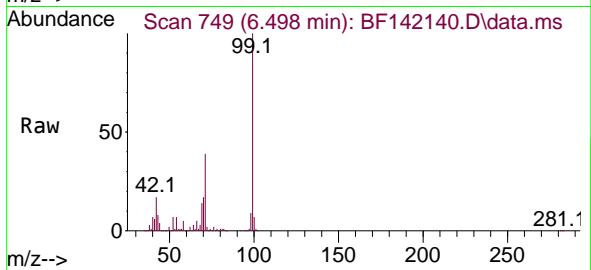




#7
 Phenol-d6
 Concen: 109.251 ng
 RT: 6.498 min Scan# 74
 Delta R.T. -0.006 min
 Lab File: BF142140.D
 Acq: 27 Mar 2025 22:40

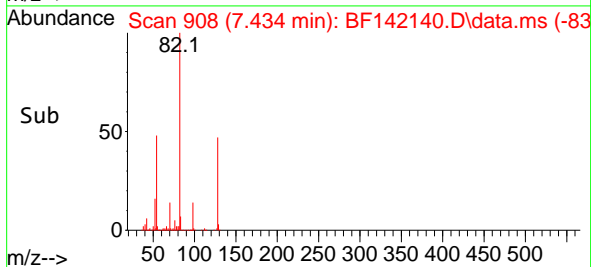
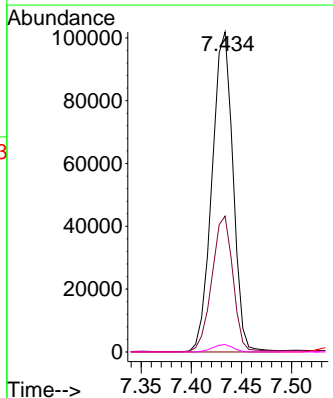
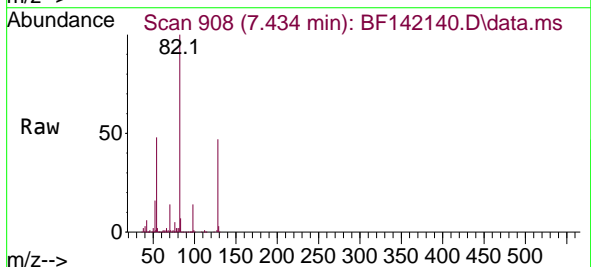
Instrument :
 BNA_F
 ClientSampleId :
 TP-8

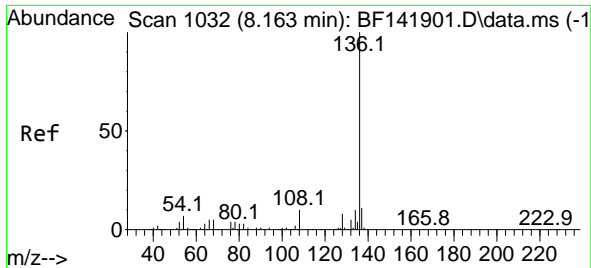
Tgt Ion: 99 Resp: 1380651
 Ion Ratio Lower Upper
 99 100
 42 17.0 14.6 21.8
 71 38.6 30.8 46.2



#19
 n-Nitroso-di-n-propylamine
 Concen: 18.252 ng
 RT: 7.434 min Scan# 908
 Delta R.T. 0.135 min
 Lab File: BF142140.D
 Acq: 27 Mar 2025 22:40

Tgt Ion: 70 Resp: 148215
 Ion Ratio Lower Upper
 70 100
 42 42.5 41.4 62.0
 101 0.0 8.2 12.2#
 130 2.3 18.2 27.4#



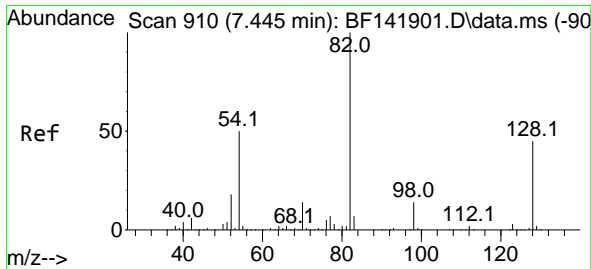
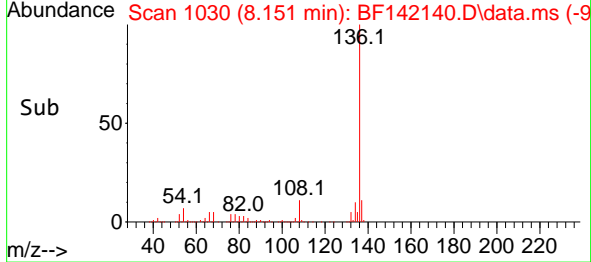
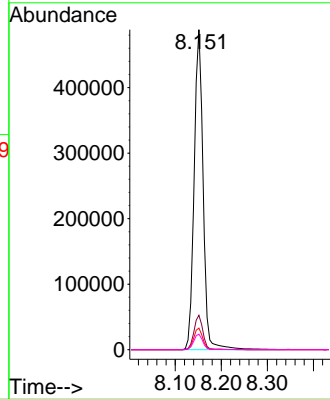
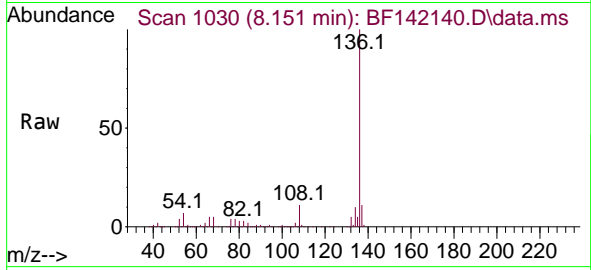


#21
 Naphthalene-d8
 Concen: 20.000 ng
 RT: 8.151 min Scan# 10
 Delta R.T. -0.012 min
 Lab File: BF142140.D
 Acq: 27 Mar 2025 22:40

Instrument :
 BNA_F
 ClientSampleId :
 TP-8

Tgt Ion:136 Resp: 658734

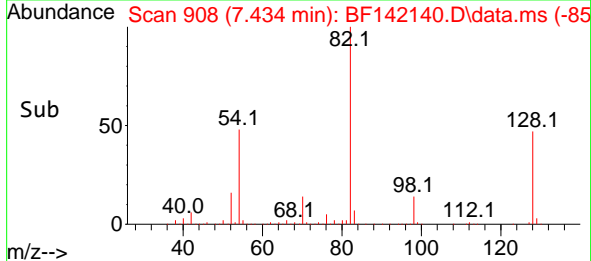
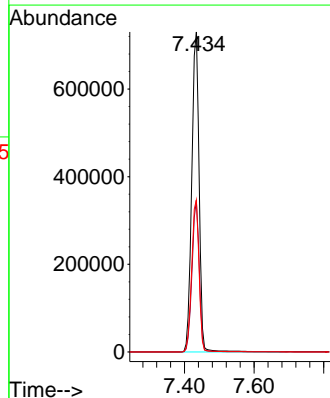
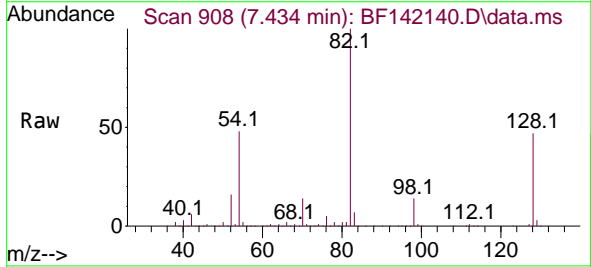
Ion	Ratio	Lower	Upper
136	100		
137	10.8	8.8	13.2
54	6.8	5.8	8.8
68	4.9	4.1	6.1

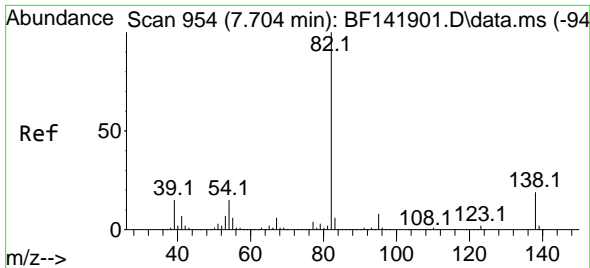


#23
 Nitrobenzene-d5
 Concen: 91.987 ng
 RT: 7.434 min Scan# 908
 Delta R.T. -0.012 min
 Lab File: BF142140.D
 Acq: 27 Mar 2025 22:40

Tgt Ion: 82 Resp: 1076752

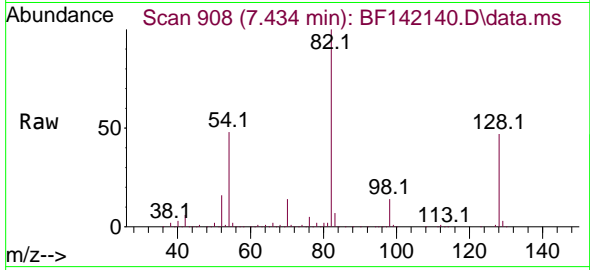
Ion	Ratio	Lower	Upper
82	100		
128	47.4	36.0	54.0
54	47.5	39.6	59.4



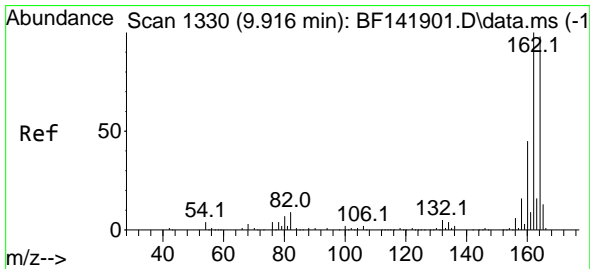
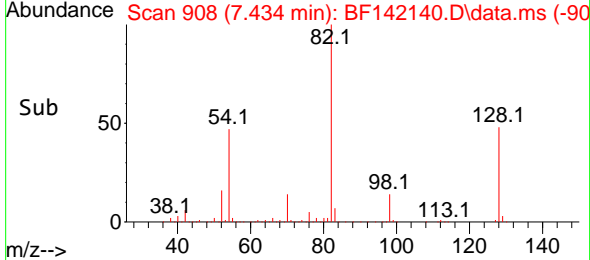
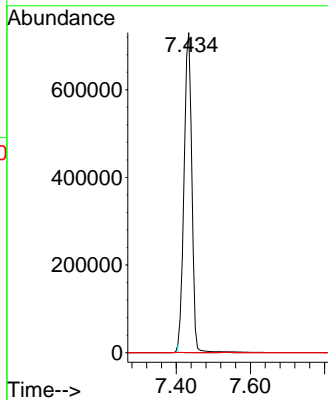


#25
 Isophorone
 Concen: 51.365 ng
 RT: 7.434 min Scan# 90
 Delta R.T. -0.270 min
 Lab File: BF142140.D
 Acq: 27 Mar 2025 22:40

Instrument :
 BNA_F
 ClientSampleId :
 TP-8

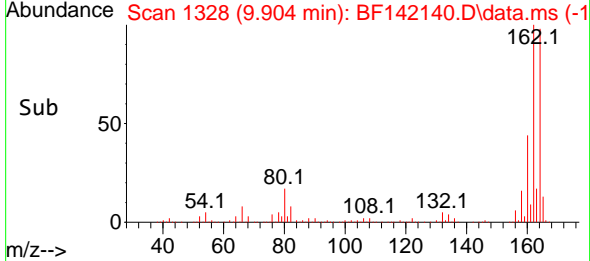
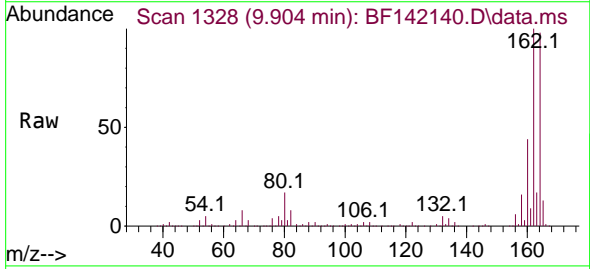
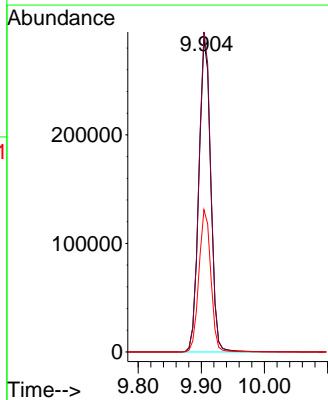


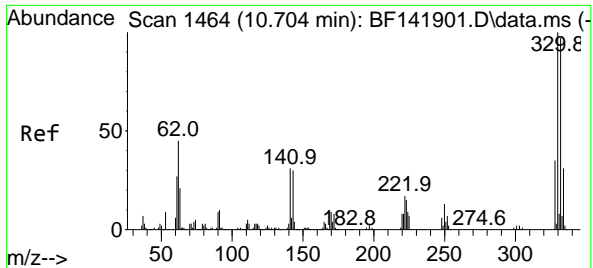
Tgt Ion: 82 Resp: 1062803
 Ion Ratio Lower Upper
 82 100
 95 0.0 6.4 9.6#
 138 0.0 14.9 22.3#



#39
 Acenaphthene-d10
 Concen: 20.000 ng
 RT: 9.904 min Scan# 1328
 Delta R.T. -0.012 min
 Lab File: BF142140.D
 Acq: 27 Mar 2025 22:40

Tgt Ion: 164 Resp: 375866
 Ion Ratio Lower Upper
 164 100
 162 102.3 81.8 122.6
 160 45.5 36.7 55.1



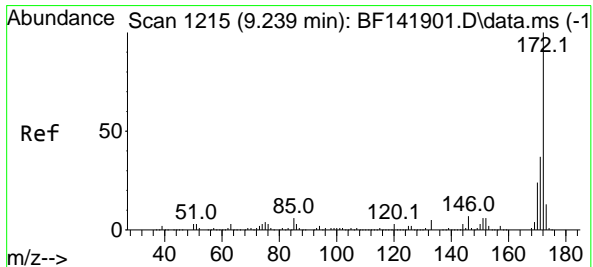
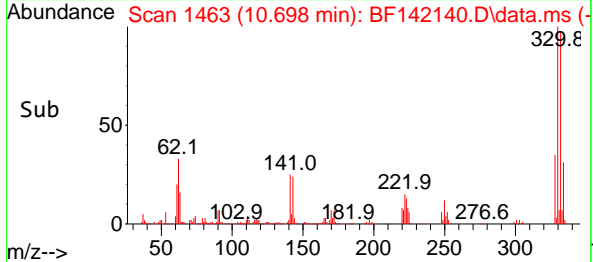
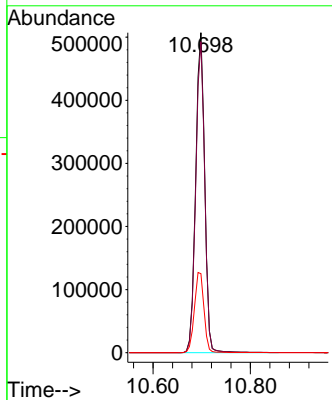
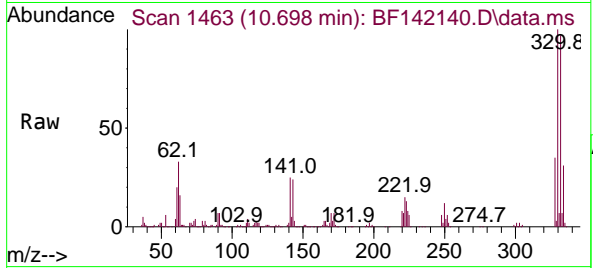


#42
 2,4,6-Tribromophenol
 Concen: 137.848 ng
 RT: 10.698 min Scan# 1463
 Delta R.T. -0.006 min
 Lab File: BF142140.D
 Acq: 27 Mar 2025 22:40

Instrument : BNA_F
 ClientSampleId : TP-8

Tgt Ion: 330 Resp: 657309

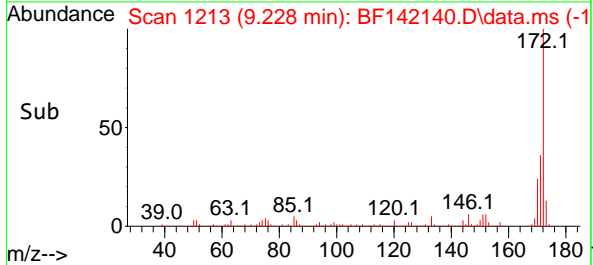
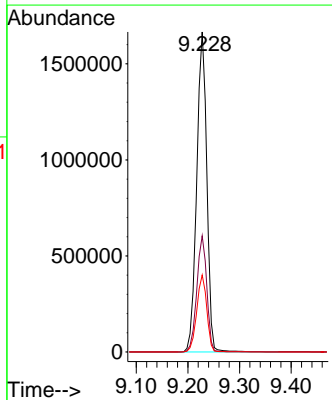
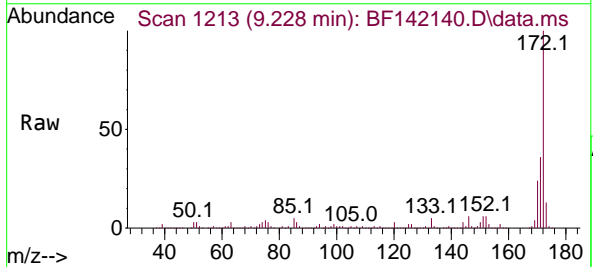
Ion	Ratio	Lower	Upper
330	100		
332	97.1	77.6	116.4
141	26.7	24.7	37.1

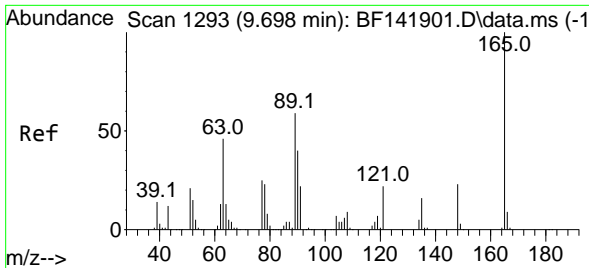


#45
 2-Fluorobiphenyl
 Concen: 91.489 ng
 RT: 9.228 min Scan# 1213
 Delta R.T. -0.012 min
 Lab File: BF142140.D
 Acq: 27 Mar 2025 22:40

Tgt Ion: 172 Resp: 2261128

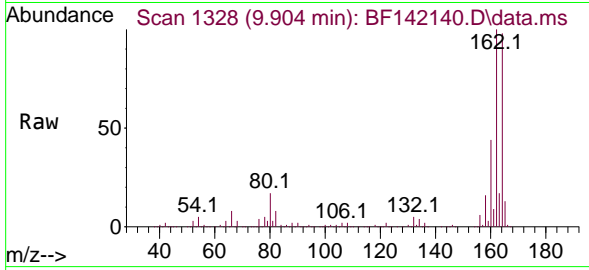
Ion	Ratio	Lower	Upper
172	100		
171	36.3	29.3	43.9
170	24.1	19.4	29.0



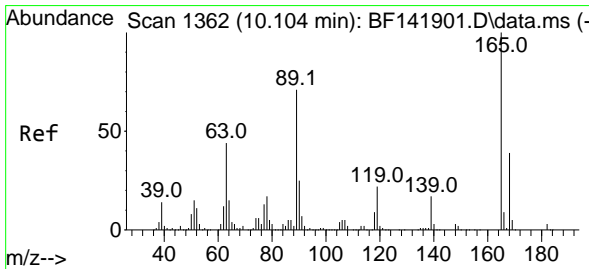
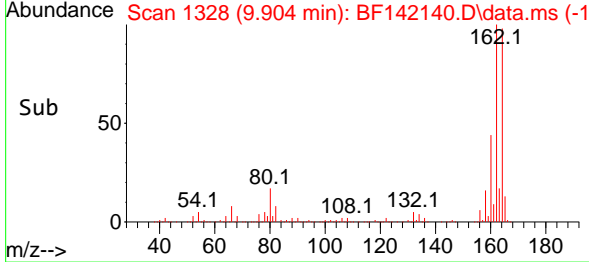
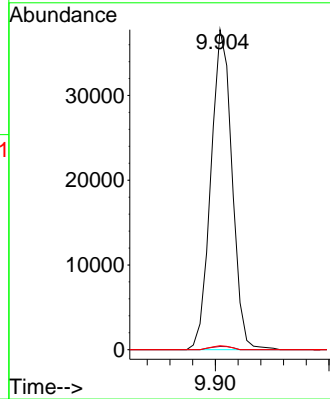


#51
 2,6-Dinitrotoluene
 Concen: 8.921 ng
 RT: 9.904 min Scan# 1328
 Delta R.T. 0.206 min
 Lab File: BF142140.D
 Acq: 27 Mar 2025 22:40

Instrument :
 BNA_F
 ClientSampleId :
 TP-8

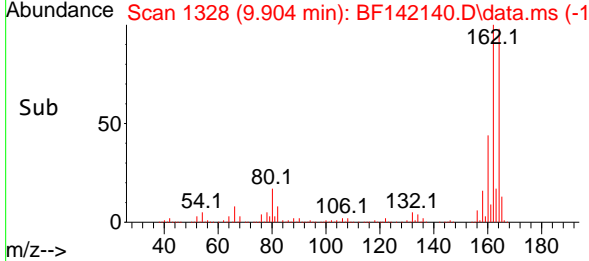
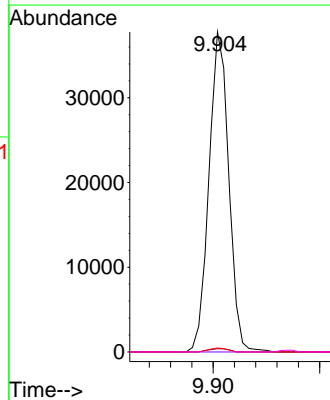
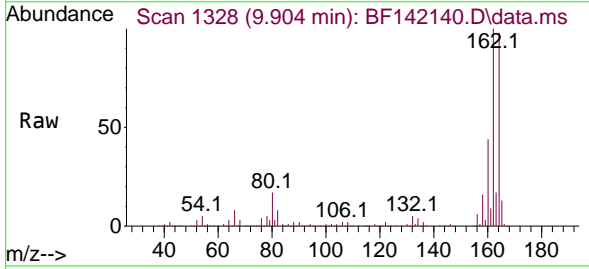


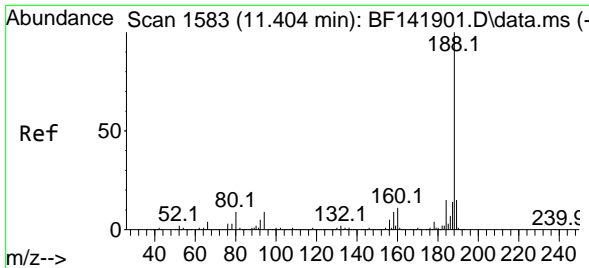
Tgt Ion:165 Resp: 48889
 Ion Ratio Lower Upper
 165 100
 63 1.0 47.0 70.4#
 89 1.2 47.4 71.2#



#57
 2,4-Dinitrotoluene
 Concen: 6.830 ng
 RT: 9.904 min Scan# 1328
 Delta R.T. -0.200 min
 Lab File: BF142140.D
 Acq: 27 Mar 2025 22:40

Tgt Ion:165 Resp: 48889
 Ion Ratio Lower Upper
 165 100
 63 1.0 35.4 53.2#
 89 1.2 56.6 84.8#
 182 0.0 2.2 3.4#



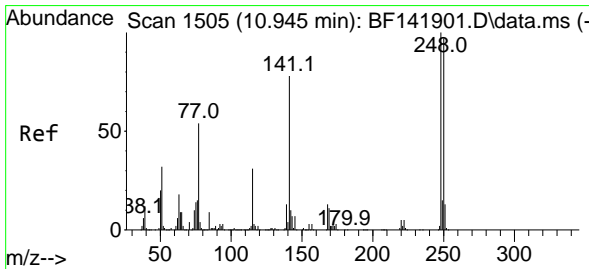
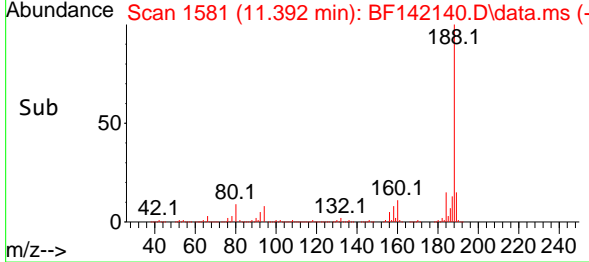
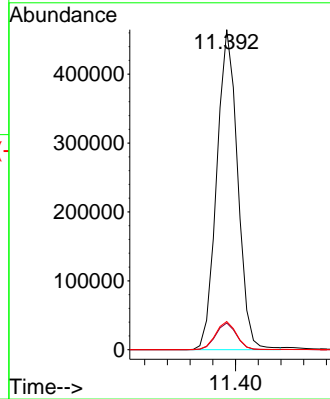
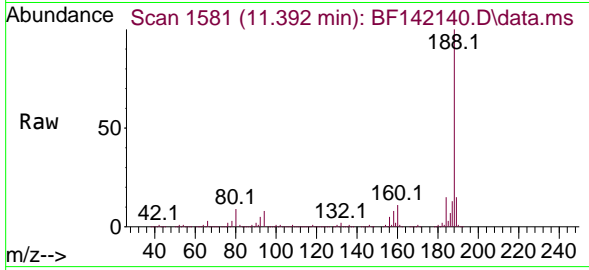


#64
 Phenanthrene-d10
 Concen: 20.000 ng
 RT: 11.392 min Scan# 11
 Delta R.T. -0.012 min
 Lab File: BF142140.D
 Acq: 27 Mar 2025 22:40

Instrument :
 BNA_F
 ClientSampleId :
 TP-8

Tgt Ion:188 Resp: 594037

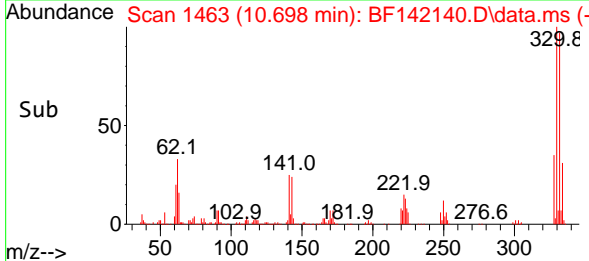
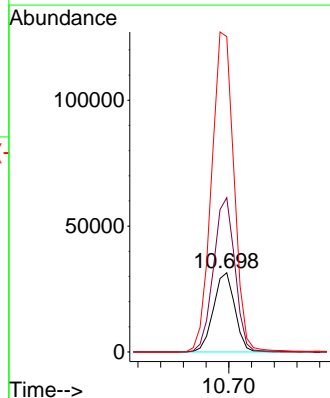
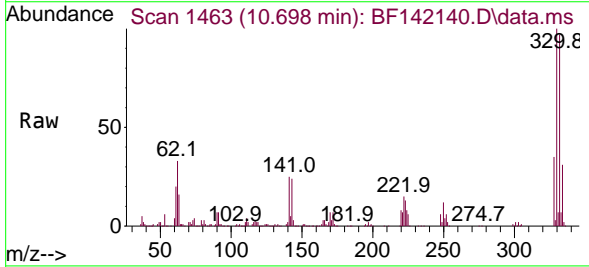
Ion	Ratio	Lower	Upper
188	100		
94	8.3	6.8	10.2
80	8.8	7.6	11.4

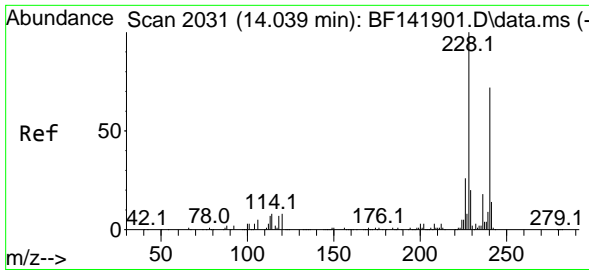


#67
 4-Bromophenyl-phenylether
 Concen: 5.511 ng
 RT: 10.698 min Scan# 1463
 Delta R.T. -0.247 min
 Lab File: BF142140.D
 Acq: 27 Mar 2025 22:40

Tgt Ion:248 Resp: 41116

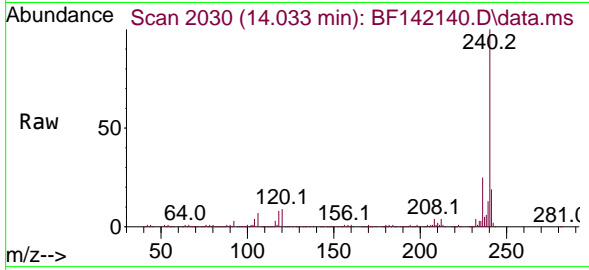
Ion	Ratio	Lower	Upper
248	100		
250	194.6	77.8	116.8#
141	397.9	62.6	93.8#



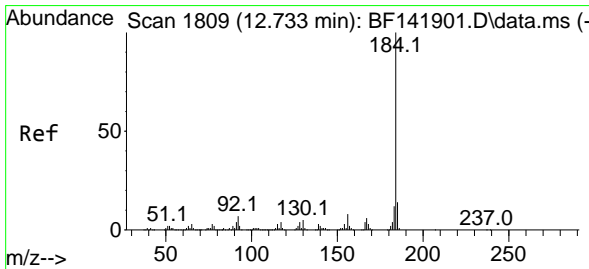
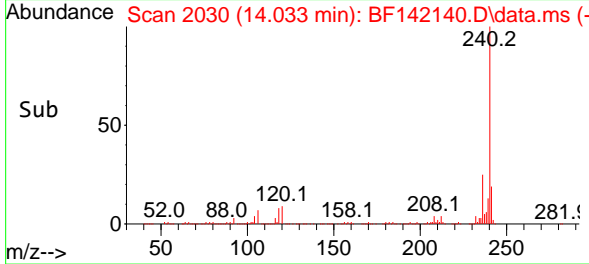
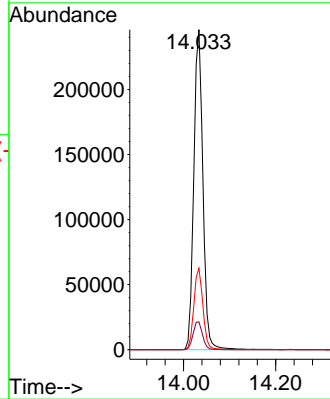


#76
 Chrysene-d12
 Concen: 20.000 ng
 RT: 14.033 min Scan# 2030
 Delta R.T. -0.006 min
 Lab File: BF142140.D
 Acq: 27 Mar 2025 22:40

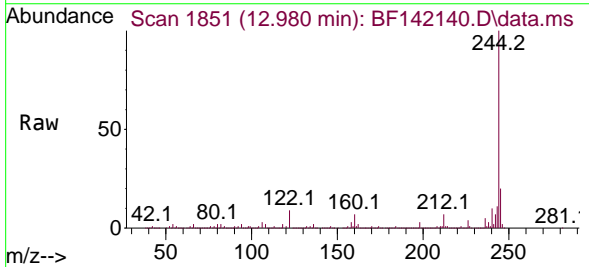
Instrument :
 BNA_F
 ClientSampleId :
 TP-8



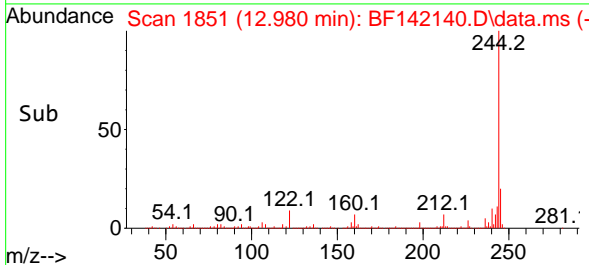
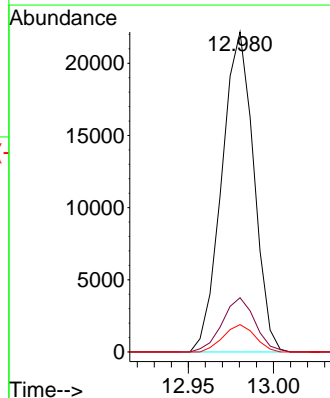
Tgt Ion:240 Resp: 336163
 Ion Ratio Lower Upper
 240 100
 120 8.7 8.4 12.6
 236 25.4 20.5 30.7

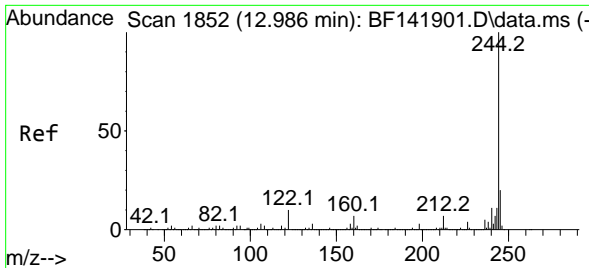


#77
 Benzdine
 Concen: 6.167 ng
 RT: 12.980 min Scan# 1851
 Delta R.T. 0.247 min
 Lab File: BF142140.D
 Acq: 27 Mar 2025 22:40



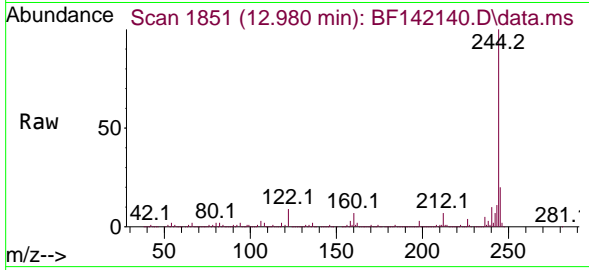
Tgt Ion:184 Resp: 28923
 Ion Ratio Lower Upper
 184 100
 185 17.0 11.5 17.3
 183 8.5 9.7 14.5#



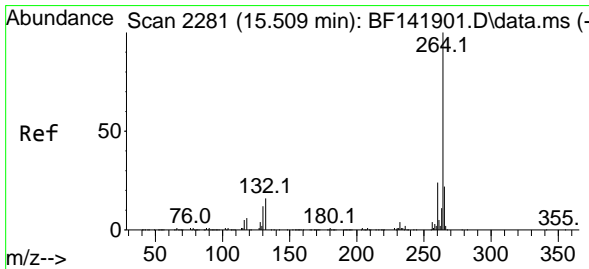
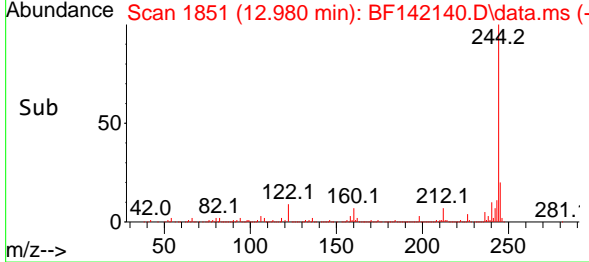
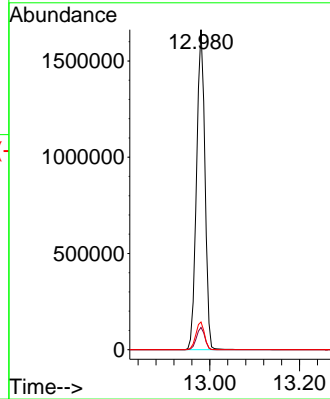


#79
 Terphenyl-d14
 Concen: 94.836 ng
 RT: 12.980 min Scan# 1851
 Delta R.T. -0.006 min
 Lab File: BF142140.D
 Acq: 27 Mar 2025 22:40

Instrument :
 BNA_F
 ClientSampleId :
 TP-8



Tgt Ion:244 Resp: 2156340
 Ion Ratio Lower Upper
 244 100
 212 7.0 6.0 9.0
 122 8.7 7.7 11.5



#86
 Perylene-d12
 Concen: 20.000 ng
 RT: 15.510 min Scan# 2281
 Delta R.T. 0.000 min
 Lab File: BF142140.D
 Acq: 27 Mar 2025 22:40

Tgt Ion:264 Resp: 345220
 Ion Ratio Lower Upper
 264 100
 260 23.3 19.1 28.7
 265 21.4 17.5 26.3

