

Data Path : Z:\HPCHEM1\BNA F\DATA\BF032817\
 Data File : BF094008.D
 Acq On : 28 Mar 2017 22:26
 Operator : SJ/MA
 Sample : I2421-02
 Misc :
 ALS Vial : 17 Sample Multiplier: 1

Instrument :
 BNA_F
 ClientSampleId :
 HHD-GW1

Quant Time: Mar 29 04:03:27 2017
 Quant Method : Z:\HPCHEM1\BNA F\METHODS\8270-BF032217.M
 Quant Title : ASP BNA STANDARDS FOR 5 POINT CALIBRATION
 QLast Update : Mon Mar 27 16:10:49 2017
 Response via : Initial Calibration

Internal Standards	R.T.	QIon	Response	Conc	Units	Dev(Min)
1) 1,4-Dichlorobenzene-d4	5.93	152	171620	20.00	ng	-0.02
21) Naphthalene-d8	7.43	136	702318	20.00	ng	-0.03
38) Acenaphthene-d10	9.57	164	321617	20.00	ng	-0.03
63) Phenanthrene-d10	11.39	188	557294	20.00	ng	-0.03
75) Chrysene-d12	14.64	240	369521	20.00	ng	-0.04
86) Perylene-d12	16.27	264	273852	20.00	ng	-0.04
System Monitoring Compounds						
5) 2-Fluorophenol	4.47	112	1291554	127.11	ng	0.00
7) Phenol-d6	5.53	99	1573345	125.17	ng	-0.02
23) Nitrobenzene-d5	6.58	82	1127141	91.59	ng	-0.02
41) 2,4,6-Tribromophenol	10.55	330	380675	149.79	ng	-0.02
44) 2-Fluorobiphenyl	8.76	172	2062666	97.82	ng	-0.02
78) Terphenyl-d14	13.38	244	1618127	98.15	ng	-0.02

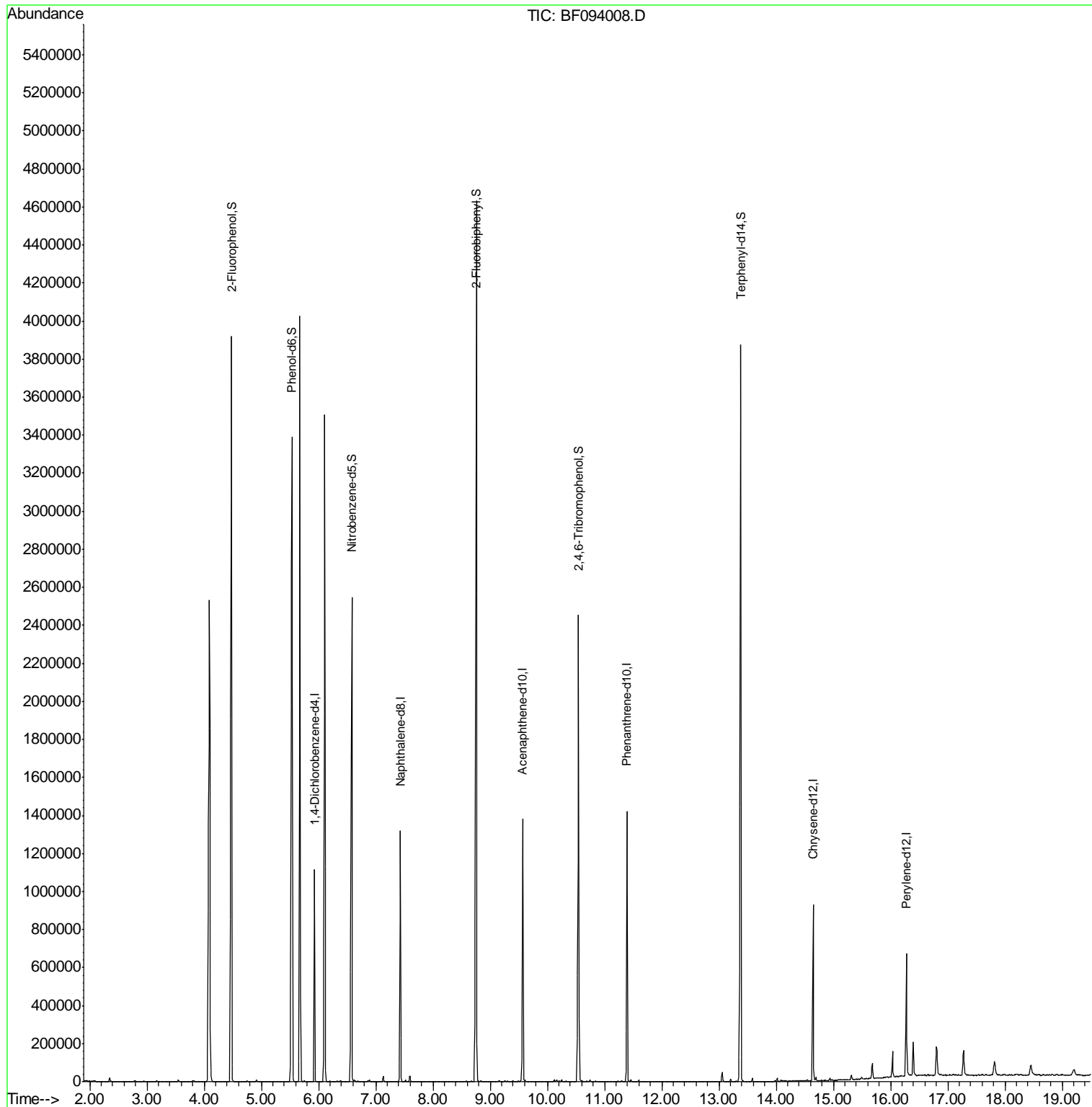
Target Compounds Qvalue

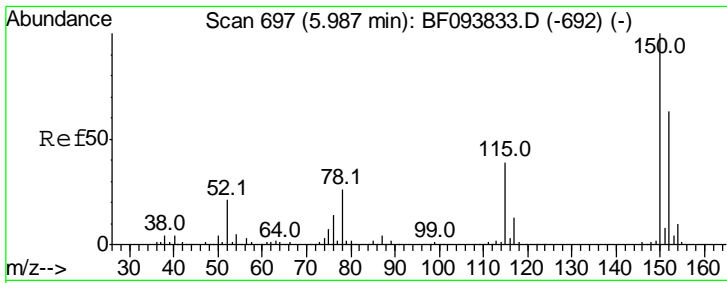
(#) = qualifier out of range (m) = manual integration (+) = signals summed

Data Path : Z:\HPCHEM1\BNA F\DATA\BF032817\
 Data File : BF094008.D
 Acq On : 28 Mar 2017 22:26
 Operator : SJ/MA
 Sample : I2421-02
 Misc :
 ALS Vial : 17 Sample Multiplier: 1

Instrument :
 BNA_F
 ClientSampleId :
 HHD-GW1

Quant Time: Mar 29 04:03:27 2017
 Quant Method : Z:\HPCHEM1\BNA F\METHODS\8270-BF032217.M
 Quant Title : ASP BNA STANDARDS FOR 5 POINT CALIBRATION
 QLast Update : Mon Mar 27 16:10:49 2017
 Response via : Initial Calibration



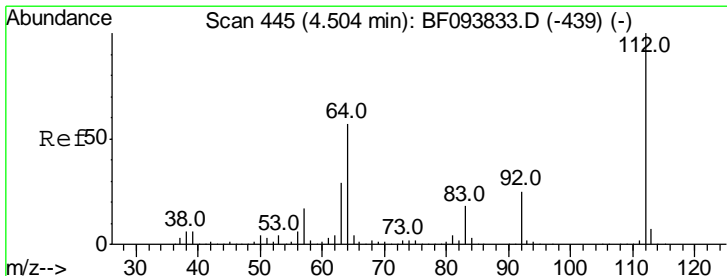
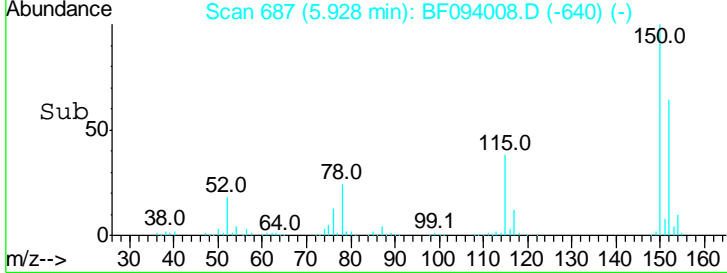
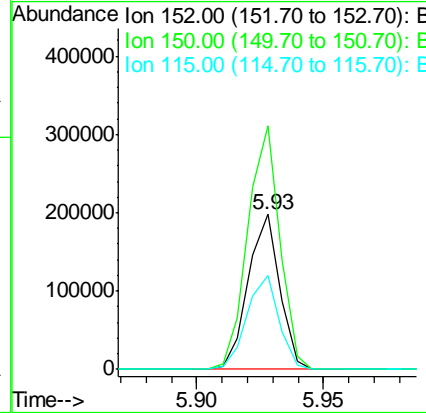
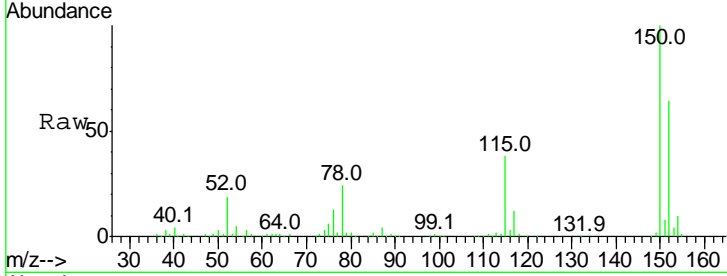


#1
 1,4-Dichlorobenzene-d4
 Concen: 20.00 ng
 RT: 5.93 min Scan# 687
 Delta R.T. -0.02 min
 Lab File: BF094008.D
 Acq: 28 Mar 2017 22:26

Instrument :
 BNA_F
ClientSampled :
 HHD-GW1

Tgt Ion:152 Resp: 171620

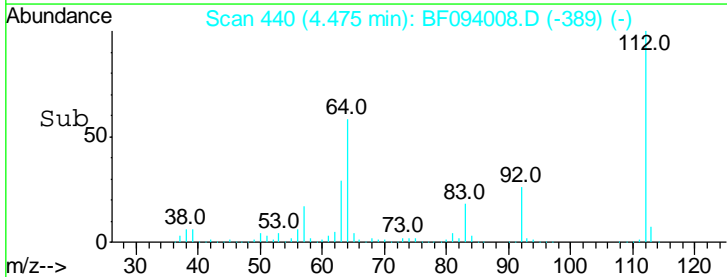
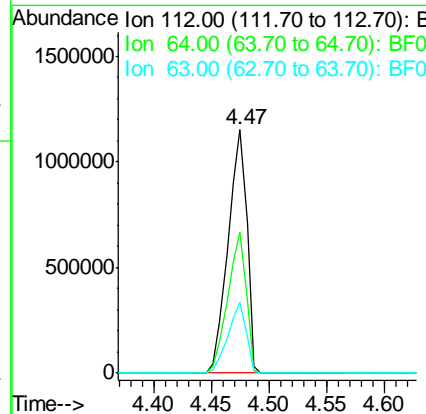
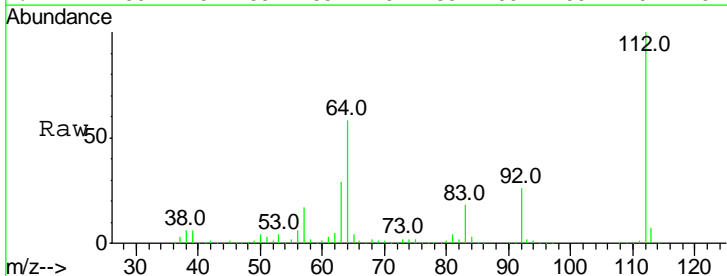
Ion	Ratio	Lower	Upper
152	100		
150	156.8	126.2	189.2
115	60.2	52.2	78.2

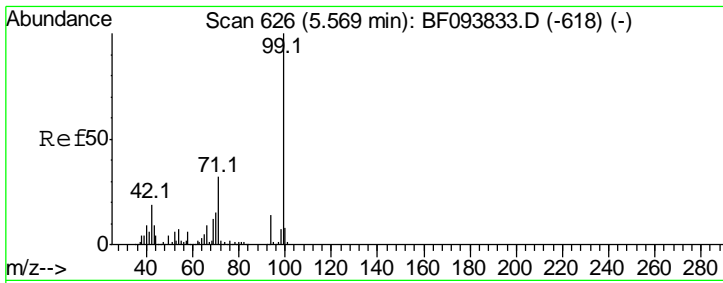


#5
 2-Fluorophenol
 Concen: 127.11 ng
 RT: 4.47 min Scan# 440
 Delta R.T. 0.00 min
 Lab File: BF094008.D
 Acq: 28 Mar 2017 22:26

Tgt Ion:112 Resp: 1291554

Ion	Ratio	Lower	Upper
112	100		
64	58.1	46.0	69.0
63	29.1	23.4	35.0

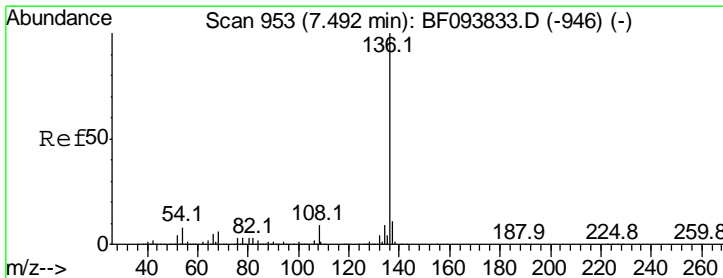
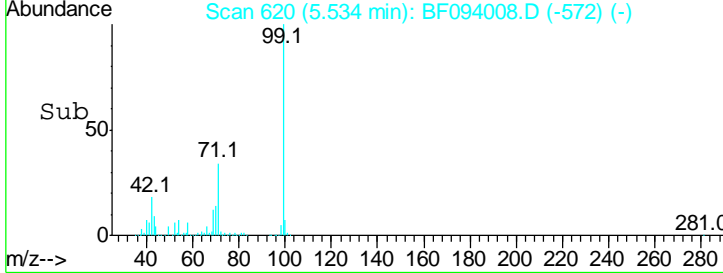
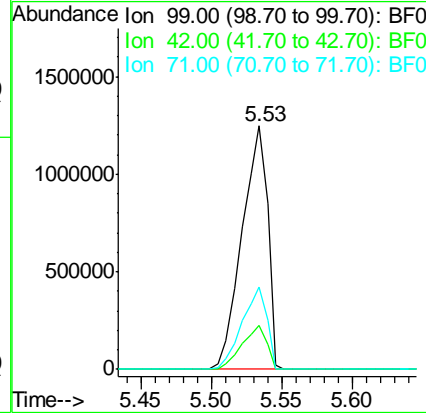
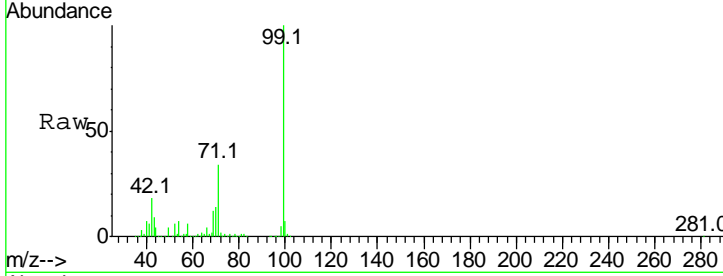




#7
 Phenol-d6
 Concen: 125.17 ng
 RT: 5.53 min Scan# 620
 Delta R.T. -0.02 min
 Lab File: BF094008.D
 Acq: 28 Mar 2017 22:26

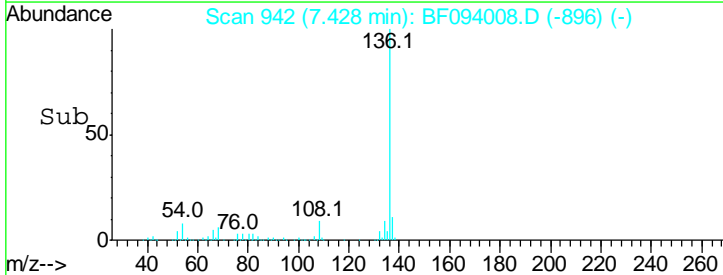
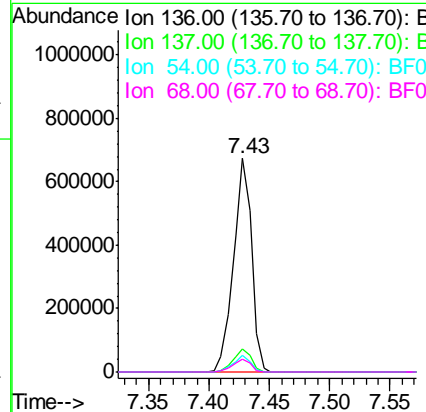
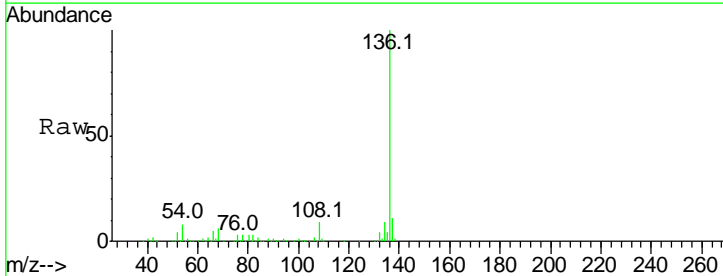
Instrument :
 BNA_F
ClientSampled :
 HHD-GW1

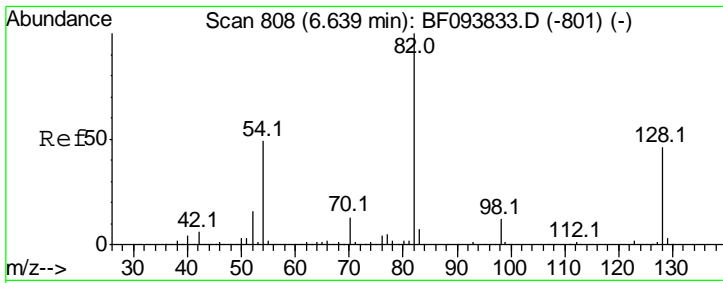
Tgt Ion	Resp	Lower	Upper
99	1573345		
99	100		
42	17.9	13.5	20.3
71	33.7	24.5	36.7



#21
 Naphthalene-d8
 Concen: 20.00 ng
 RT: 7.43 min Scan# 942
 Delta R.T. -0.03 min
 Lab File: BF094008.D
 Acq: 28 Mar 2017 22:26

Tgt Ion	Resp	Lower	Upper
136	702318		
136	100		
137	11.0	8.5	12.7
54	7.8	4.9	7.3#
68	5.9	4.1	6.1



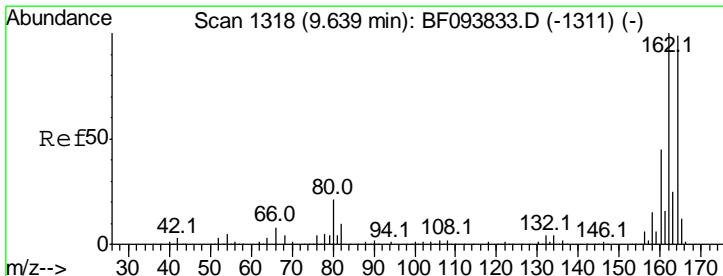
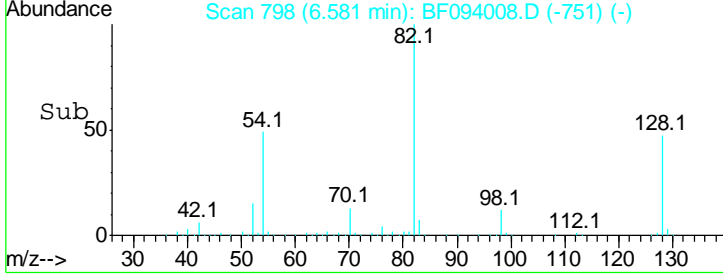
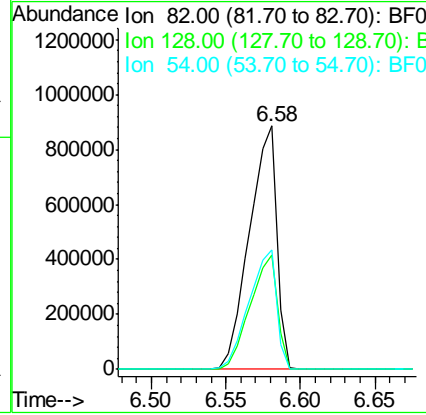
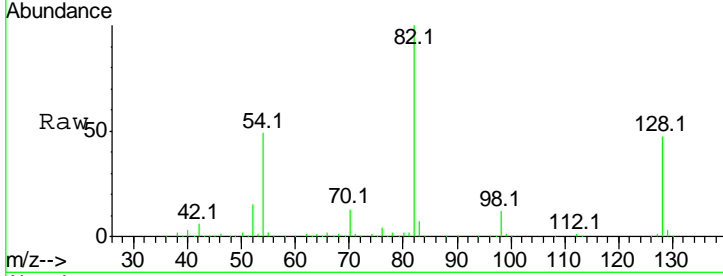


#23
 Nitrobenzene-d5
 Concen: 91.59 ng
 RT: 6.58 min Scan# 798
 Delta R.T. -0.02 min
 Lab File: BF094008.D
 Acq: 28 Mar 2017 22:26

Instrument :
 BNA_F
ClientSampled :
 HHD-GW1

Tot Ion: 82 Resp: 1127141

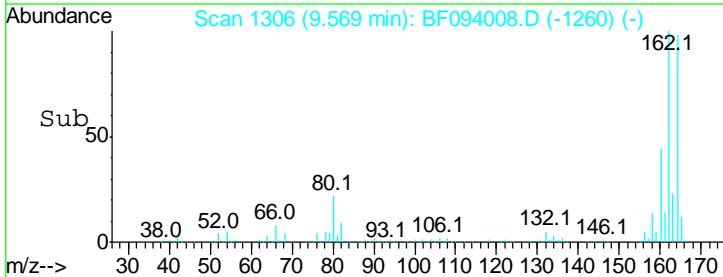
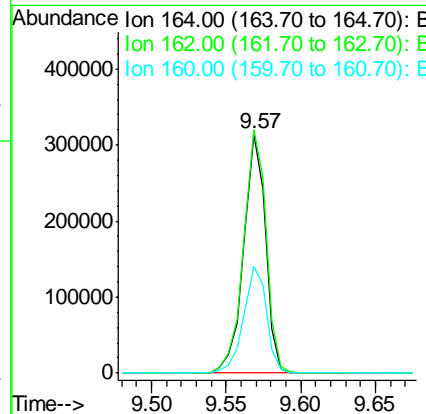
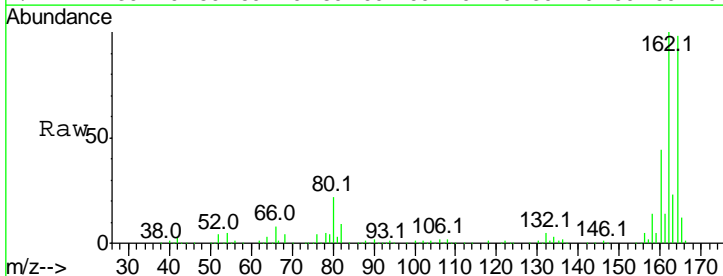
Ion	Ratio	Lower	Upper
82	100		
128	46.9	34.0	51.0
54	49.2	42.2	63.2

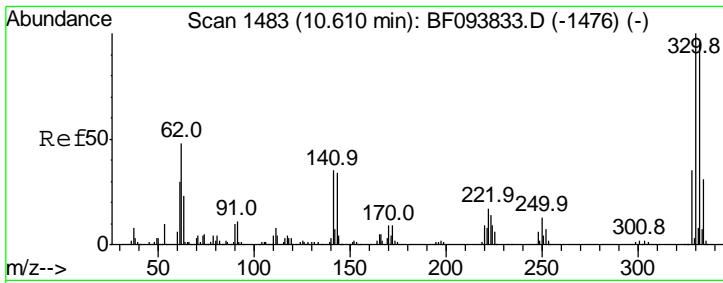


#38
 Acenaphthene-d10
 Concen: 20.00 ng
 RT: 9.57 min Scan# 1306
 Delta R.T. -0.03 min
 Lab File: BF094008.D
 Acq: 28 Mar 2017 22:26

Tgt Ion: 164 Resp: 321617

Ion	Ratio	Lower	Upper
164	100		
162	101.8	82.6	123.8
160	44.7	36.2	54.2

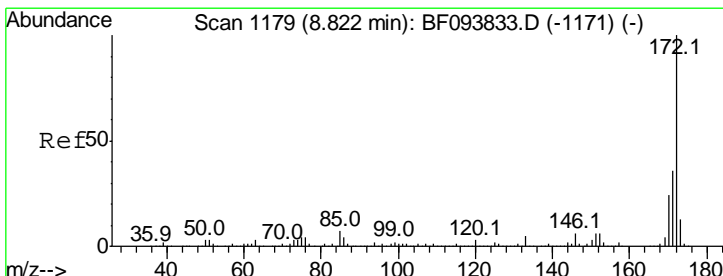
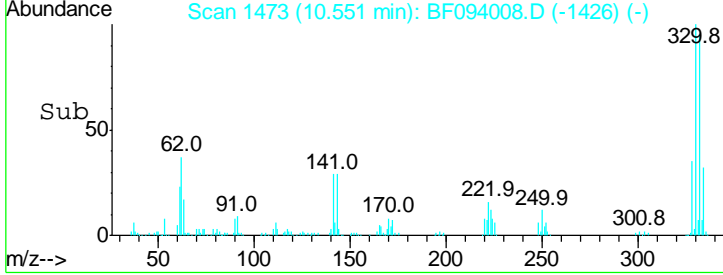
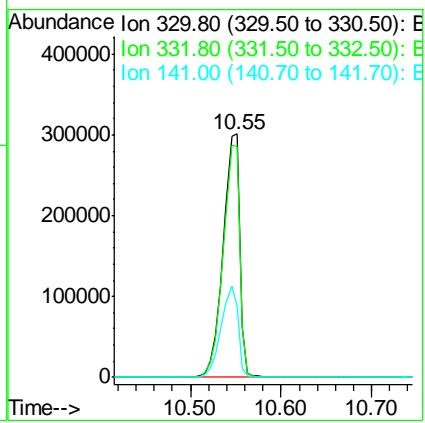
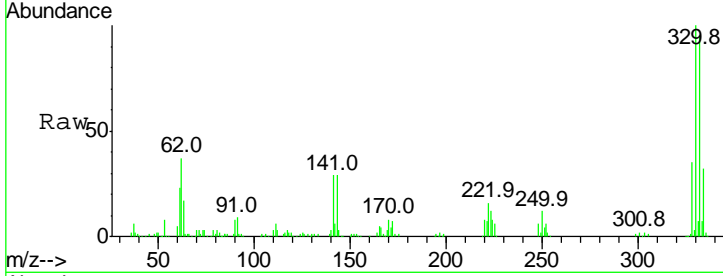




#41
 2,4,6-Tribromophenol
 Concen: 149.79 ng
 RT: 10.55 min Scan# 1473
 Delta R.T. -0.02 min
 Lab File: BF094008.D
 Acq: 28 Mar 2017 22:26

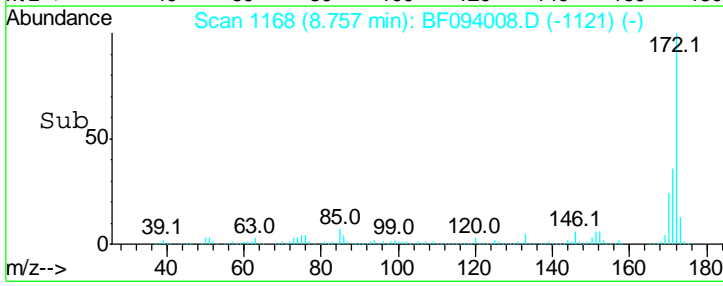
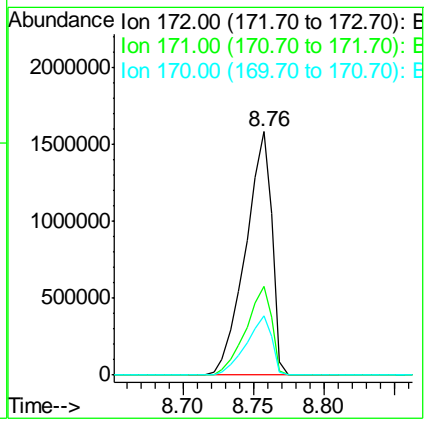
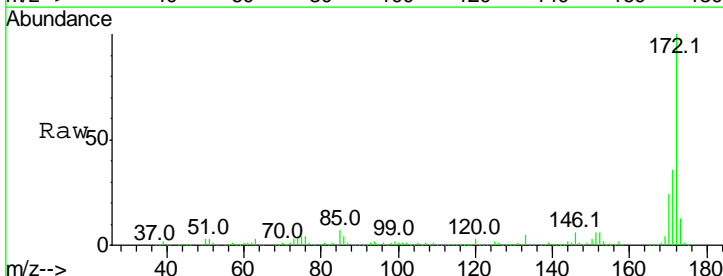
Instrument :
 BNA_F
 ClientSampled :
 HHD-GW1

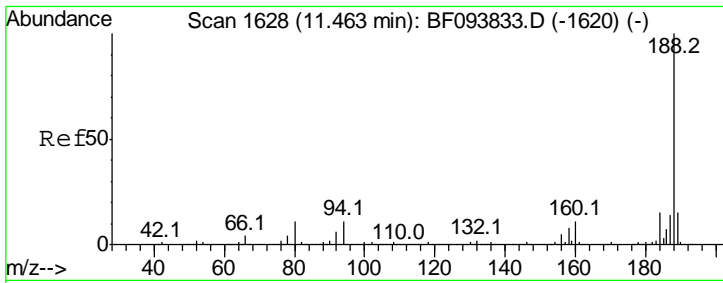
Tgt Ion	Resp	Lower	Upper
330	100		
332	95.3	76.6	115.0
141	38.2	31.4	47.2



#44
 2-Fluorobiphenyl
 Concen: 97.82 ng
 RT: 8.76 min Scan# 1168
 Delta R.T. -0.02 min
 Lab File: BF094008.D
 Acq: 28 Mar 2017 22:26

Tgt Ion	Resp	Lower	Upper
172	100		
171	36.3	29.6	44.4
170	24.2	19.8	29.8

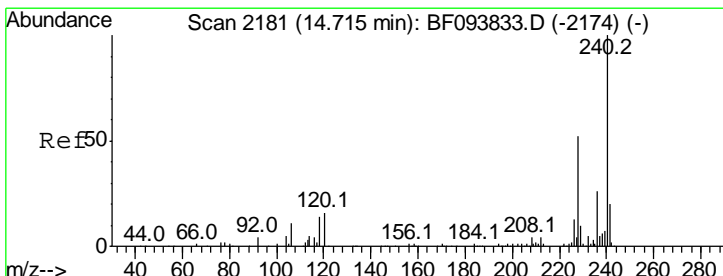
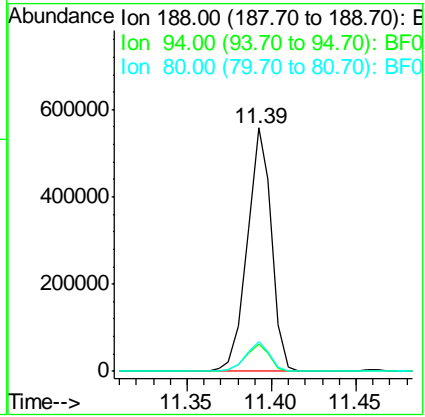
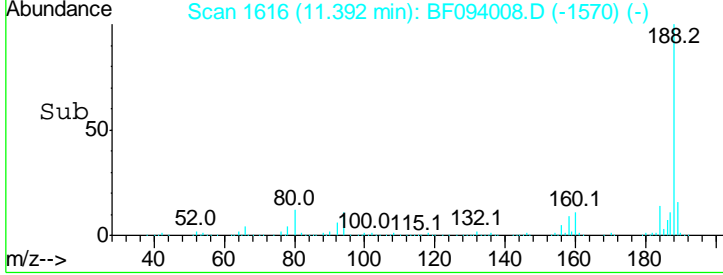
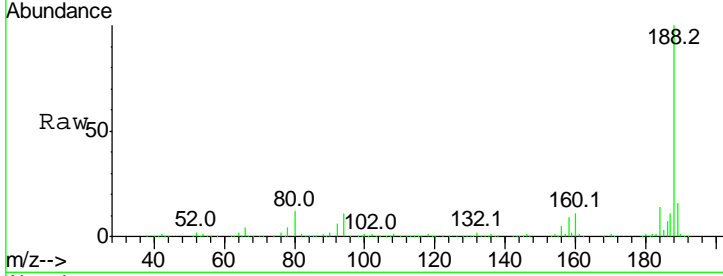




#63
 Phenanthrene-d10
 Concen: 20.00 ng
 RT: 11.39 min Scan# 1616
 Delta R.T. -0.03 min
 Lab File: BF094008.D
 Acq: 28 Mar 2017 22:26

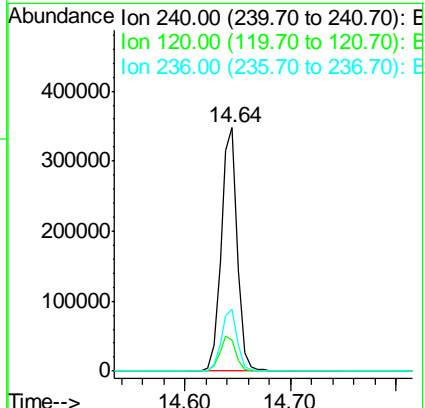
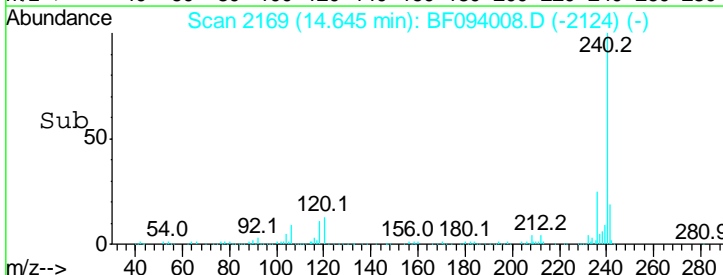
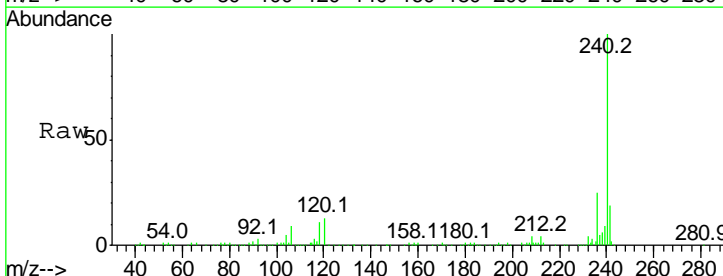
Instrument :
 BNA_F
 ClientSampled :
 HHD-GW1

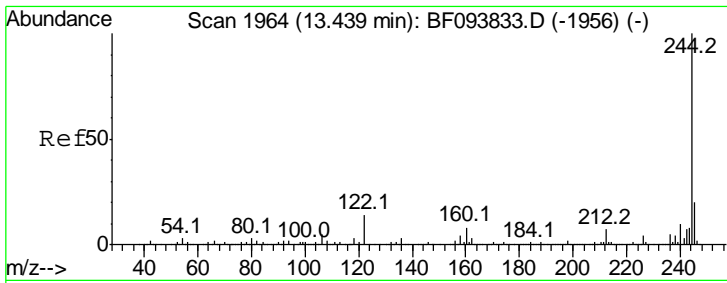
Tgt Ion	Resp	Lower	Upper
188	100		
94	11.1	9.4	14.2
80	12.3	10.2	15.2



#75
 Chrysene-d12
 Concen: 20.00 ng
 RT: 14.64 min Scan# 2169
 Delta R.T. -0.04 min
 Lab File: BF094008.D
 Acq: 28 Mar 2017 22:26

Tgt Ion	Resp	Lower	Upper
240	100		
120	12.9	5.8	8.8#
236	25.2	20.5	30.7



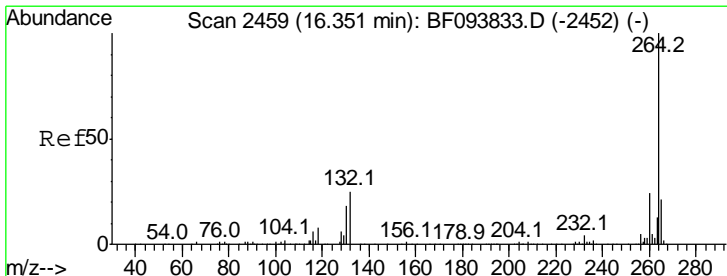
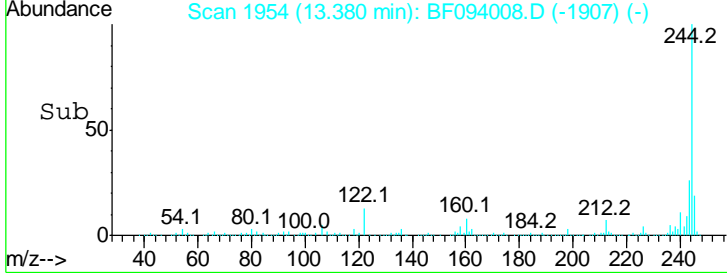
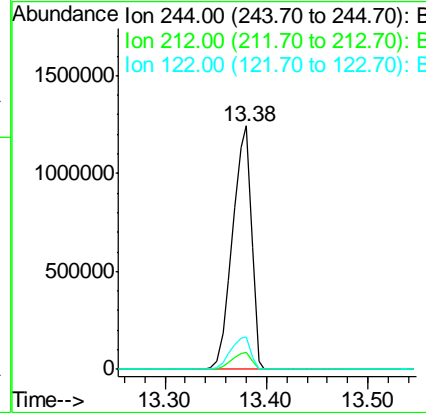
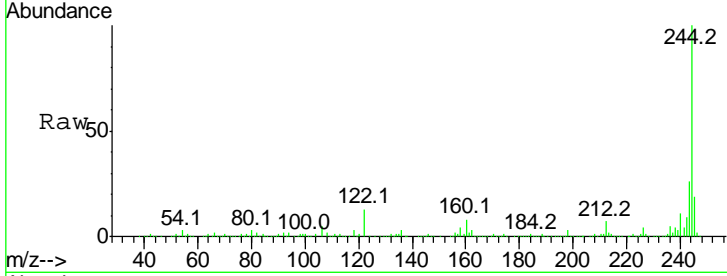


#78
 Terphenyl-d14
 Concen: 98.15 ng
 RT: 13.38 min Scan# 1954
 Delta R.T. -0.02 min
 Lab File: BF094008.D
 Acq: 28 Mar 2017 22:26

Instrument :
 BNA_F
 ClientSampled :
 HHD-GW1

Tgt Ion: 244 Resp: 1618127

Ion	Ratio	Lower	Upper
244	100		
212	7.2	6.0	9.0
122	13.2	10.3	15.5



#86
 Perylene-d12
 Concen: 20.00 ng
 RT: 16.27 min Scan# 2446
 Delta R.T. -0.04 min
 Lab File: BF094008.D
 Acq: 28 Mar 2017 22:26

Tgt Ion: 264 Resp: 273852

Ion	Ratio	Lower	Upper
264	100		
260	23.4	19.5	29.3
265	21.8	17.2	25.8

