

Data Path : Z:\HPCHEM1\BNA F\DATA\BF040216\
 Data File : BF085995.D
 Acq On : 2 Apr 2016 7:22
 Operator : UM/SJ
 Sample : H2055-02
 Misc :
 ALS Vial : 33 Sample Multiplier: 1

Instrument :
 BNA_F
 ClientSampled :
 BH-2(5-10)

Integration Parameters: rteint.p
 Integrator: RTE
 Smoothing : ON Filtering: 5
 Sampling : 1 Min Area: 3 % of largest Peak
 Start Thrs: 0.2 Max Peaks: 100
 Stop Thrs : 0 Peak Location: TOP

If leading or trailing edge < 100 prefer < Baseline drop else tangent >
 Peak separation: 5

Method : Z:\HPCHEM1\BNA F\METHODS\8270-BF040216.M
 Title : ASP BNA STANDARDS FOR 5 POINT CALIBRATION

Signal : TIC

peak #	R.T. min	first scan	max scan	last scan	PK TY	peak height	corr. area	corr. % max.	% of total
1	4.956	250	251	258	rBV	30547	55753	2.39%	0.273%
2	5.367	285	287	309	rBV	1851629	1865108	79.94%	9.142%
3	6.407	376	378	381	rBV	1479655	1801285	77.20%	8.829%
4	6.544	387	390	392	rBV	1439759	2001499	85.78%	9.810%
5	6.773	408	410	416	rBV	652309	592611	25.40%	2.905%
6	6.922	421	423	426	rBV	1258729	1506835	64.58%	7.386%
7	7.333	457	459	462	rBV	863173	1255824	53.82%	6.155%
8	8.053	520	522	525	rBV	766512	776846	33.30%	3.808%
9	9.128	614	616	619	rBV	1732025	2056179	88.13%	10.078%
10	9.528	649	651	654	rBV	212240	207973	8.91%	1.019%
11	9.745	668	670	672	rBV	48920	39983	1.71%	0.196%
12	9.802	673	675	678	rVV	615636	848944	36.39%	4.161%
13	10.236	712	713	715	rVB	49280	64599	2.77%	0.317%
14	10.465	729	733	736	rBV2	24160	46530	1.99%	0.228%
15	10.602	742	745	747	rBV2	1104538	1474083	63.18%	7.225%
16	10.716	753	755	759	rBV	83019	101104	4.33%	0.496%
17	11.162	792	794	795	rBV	41771	36171	1.55%	0.177%
18	11.288	803	805	808	rBV	969960	932591	39.97%	4.571%
19	11.825	850	852	860	rBV	80926	107300	4.60%	0.526%
20	12.602	918	920	926	rBV	38900	59263	2.54%	0.290%
21	12.877	941	944	946	rBV	2247279	2333203	100.00%	11.436%
22	13.357	982	986	988	rBV	22311	25002	1.07%	0.123%
23	13.779	1020	1023	1033	rBV	186171	466091	19.98%	2.285%
24	13.928	1033	1036	1038	rBV	788727	885582	37.96%	4.341%
25	14.431	1078	1080	1083	rBV3	9212	24169	1.04%	0.118%
26	14.751	1106	1108	1110	rVB	48843	47452	2.03%	0.233%
27	15.334	1156	1159	1166	rBV	495481	759467	32.55%	3.723%
28	15.837	1199	1203	1205	rBV4	11025	30477	1.31%	0.149%

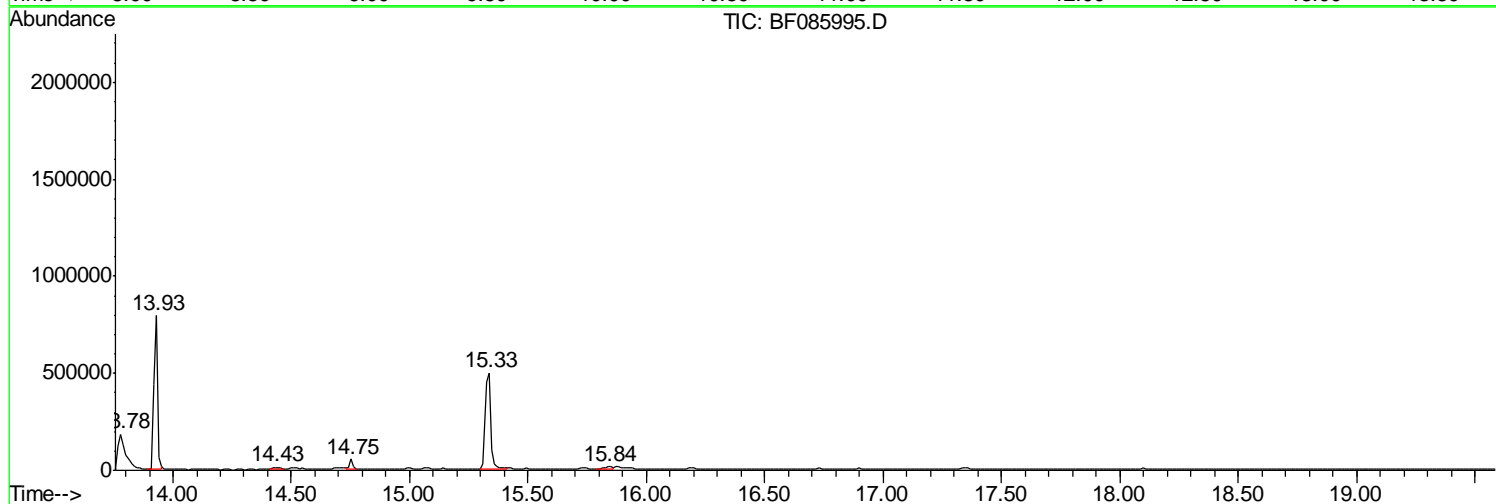
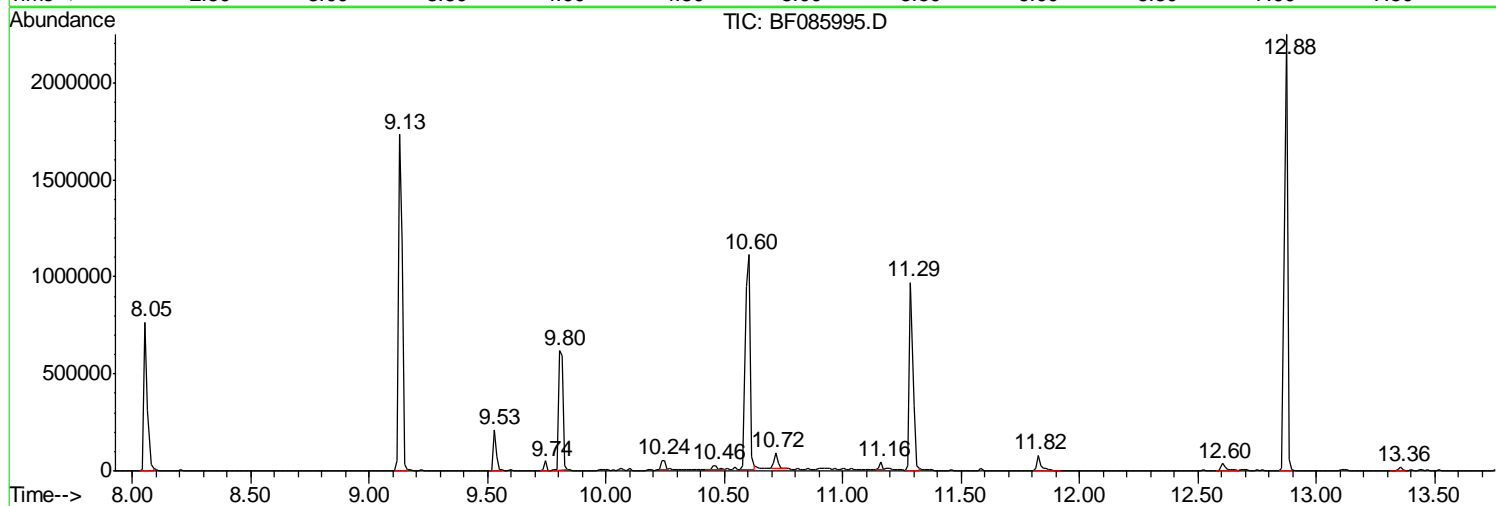
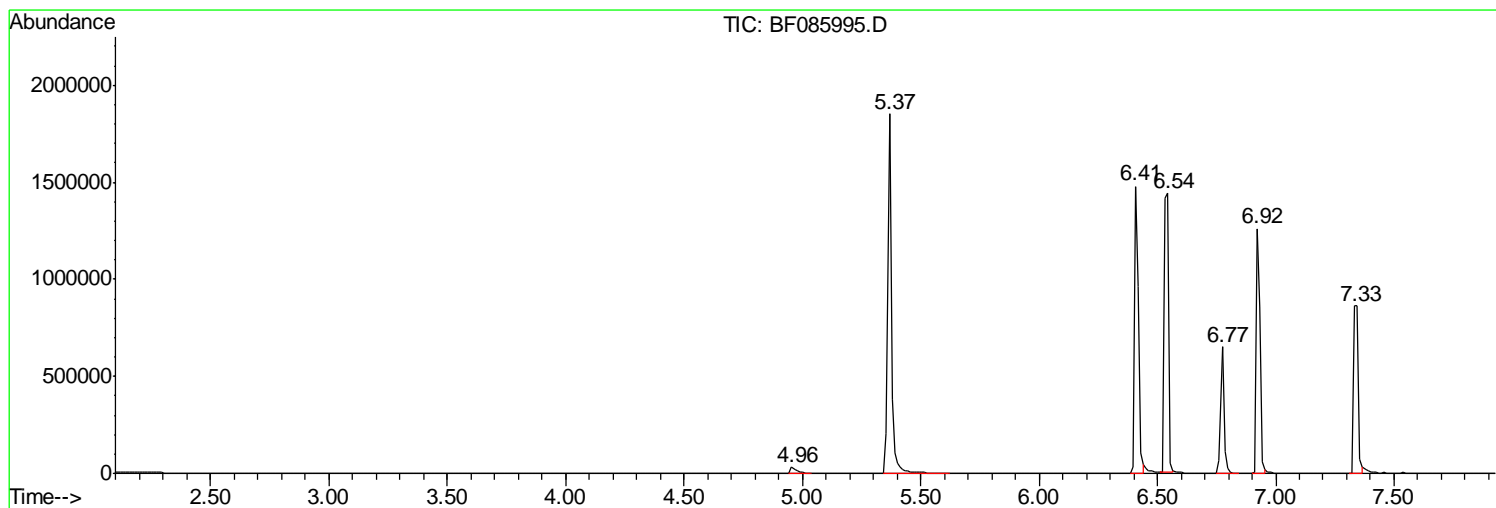
Sum of corrected areas: 20401924

Data Path : Z:\HPCHEM1\BNA F\DATA\BF040216\
Data File : BF085995.D
Acq On : 2 Apr 2016 7:22
Operator : UM/SJ
Sample : H2055-02
Misc :
ALS Vial : 33 Sample Multiplier: 1

Instrument :
BNA_F
ClientSampled :
BH-2(5-10)

Quant Method : Z:\HPCHEM1\BNA F\METHODS\8270-BF040216.M
Quant Title : ASP BNA STANDARDS FOR 5 POINT CALIBRATION

TIC Library : C:\DATABASE\NIST02.L
TIC Integration Parameters: LSCINT.P



Data Path : Z:\HPCHEM1\BNA F\DATA\BF040216\
 Data File : BF085995.D
 Acq On : 2 Apr 2016 7:22
 Operator : UM/SJ
 Sample : H2055-02
 Misc :
 ALS Vial : 33 Sample Multiplier: 1

Instrument :
 BNA_F
 ClientSampled :
 BH-2(5-10)

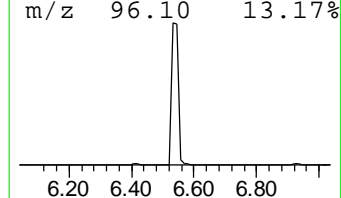
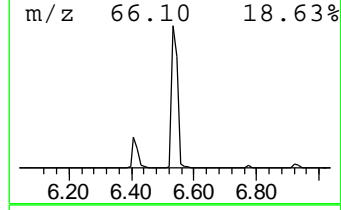
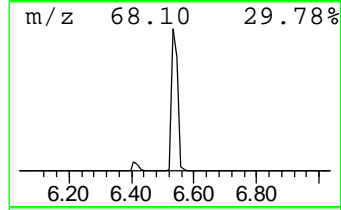
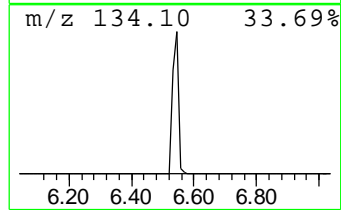
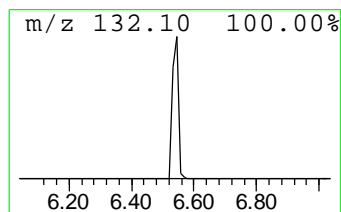
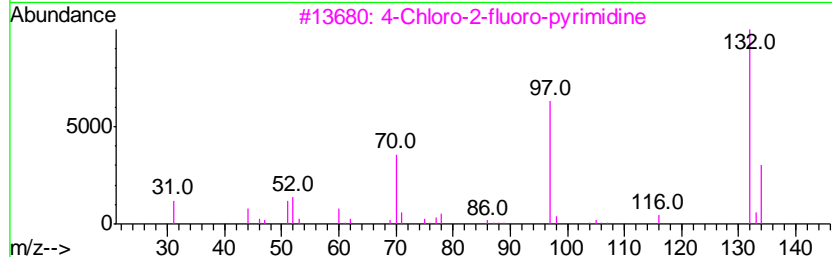
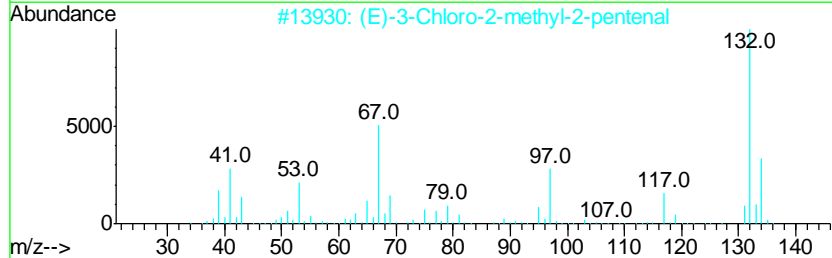
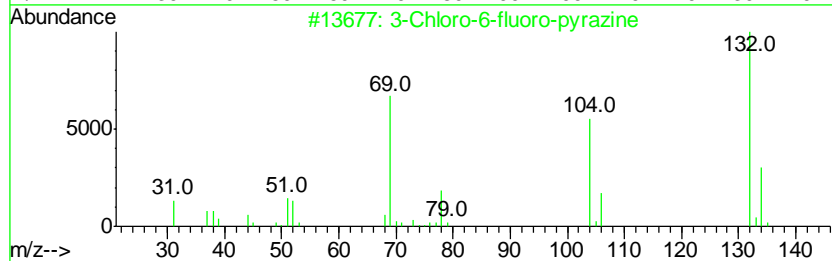
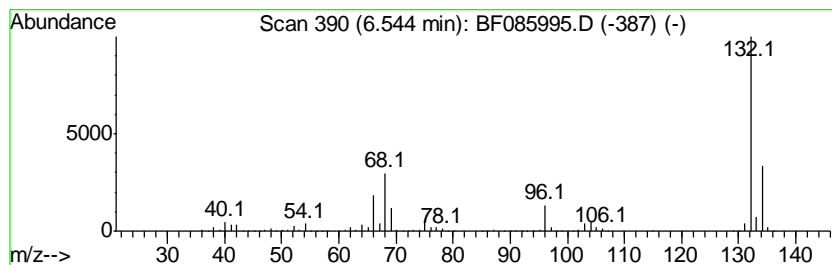
Quant Method : Z:\HPCHEM1\BNA F\METHODS\8270-BF040216.M
 Quant Title : ASP BNA STANDARDS FOR 5 POINT CALIBRATION

TIC Library : C:\DATABASE\NIST02.L
 TIC Integration Parameters: LSCINT.P

 Peak Number 1 3-Chloro-6-fluoro-pyrazine Concentration Rank 1

R.T.	EstConc	Area	Relative to ISTD	R.T.
6.54	67.55 ng	2001500	1,4-Dichlorobenzene-d4	6.77

Hit#	of	Tentative ID	MW	MolForm	CAS#	Qual
1	5	3-Chloro-6-fluoro-pyrazine	132	C4H2ClFN2	1000146-10-7	52
2		(E)-3-Chloro-2-methyl-2-pentenal	132	C6H9ClO	031357-76-3	40
3		4-Chloro-2-fluoro-pyrimidine	132	C4H2ClFN2	051422-00-5	9
4		5-Fluoro-2-chloropyrimidine	132	C4H2ClFN2	062802-42-0	9
5		2H-Cyclopenta[d]pyridazine, 2-me...	132	C8H8N2	022291-85-6	9



Data Path : Z:\HPCHEM1\BNA F\DATA\BF040216\
 Data File : BF085995.D
 Acq On : 2 Apr 2016 7:22
 Operator : UM/SJ
 Sample : H2055-02
 Misc :
 ALS Vial : 33 Sample Multiplier: 1

Instrument :
 BNA_F
 ClientSampleID :
 BH-2(5-10)

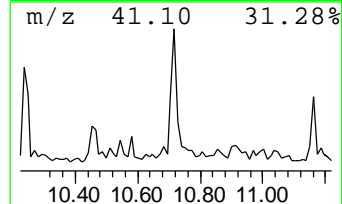
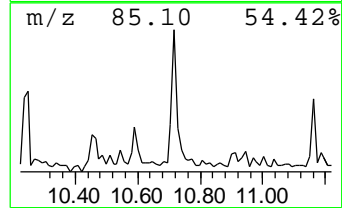
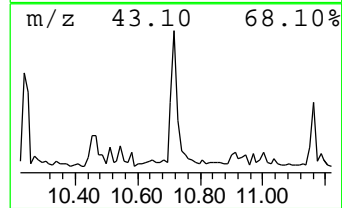
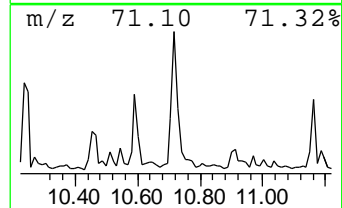
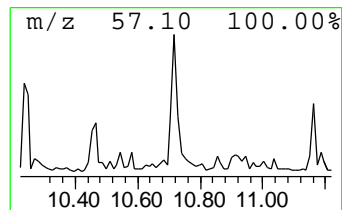
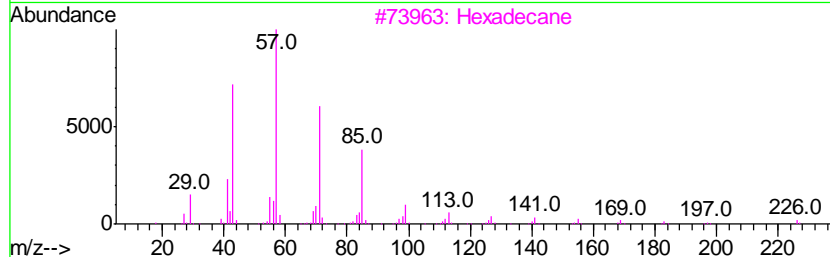
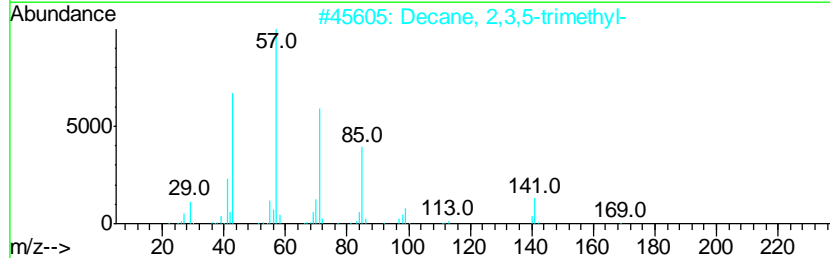
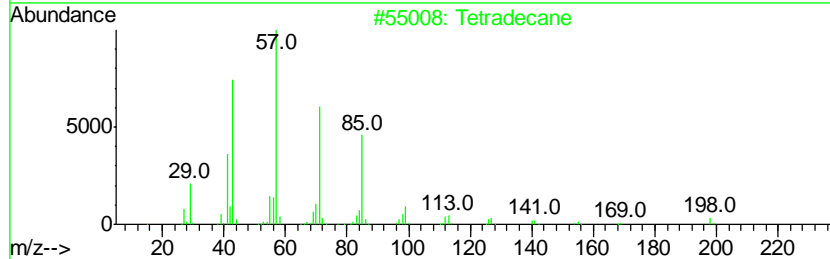
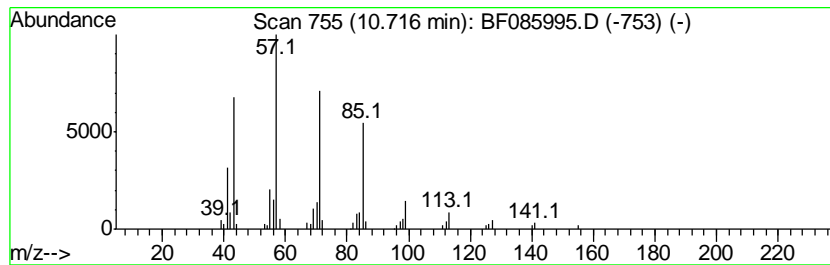
Quant Method : Z:\HPCHEM1\BNA F\METHODS\8270-BF040216.M
 Quant Title : ASP BNA STANDARDS FOR 5 POINT CALIBRATION

TIC Library : C:\DATABASE\NIST02.L
 TIC Integration Parameters: LSCINT.P

 Peak Number 3 Tetradecane Concentration Rank 5

R.T.	EstConc	Area	Relative to ISTD	R.T.
10.72	2.17 ng	101104	Phenanthrene-d10	11.29

Hit#	of	Tentative ID	MW	MolForm	CAS#	Qual
1	5	Tetradecane	198	C14H30	000629-59-4	87
2		Decane, 2,3,5-trimethyl-	184	C13H28	062238-11-3	86
3		Hexadecane	226	C16H34	000544-76-3	86
4		Eicosane	282	C20H42	000112-95-8	83
5		Octane, 2,4,6-trimethyl-	156	C11H24	062016-37-9	80



Data Path : Z:\HPCHEM1\BNA F\DATA\BF040216\
 Data File : BF085995.D
 Acq On : 2 Apr 2016 7:22
 Operator : UM/SJ
 Sample : H2055-02
 Misc :
 ALS Vial : 33 Sample Multiplier: 1

Instrument :
 BNA_F
 ClientSampled :
 BH-2(5-10)

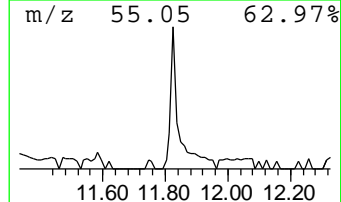
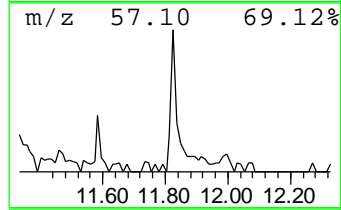
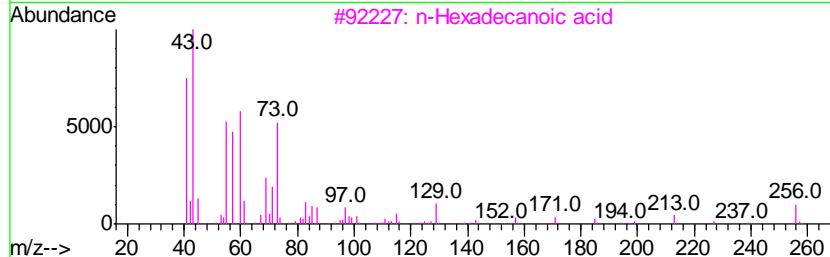
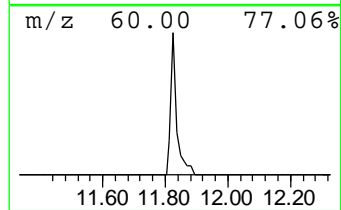
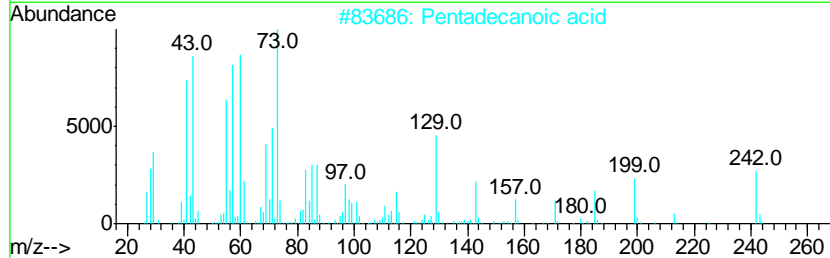
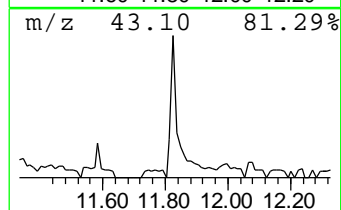
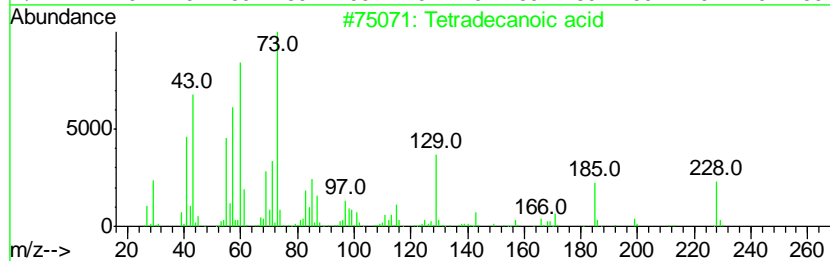
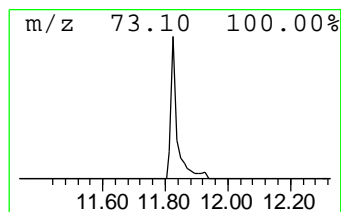
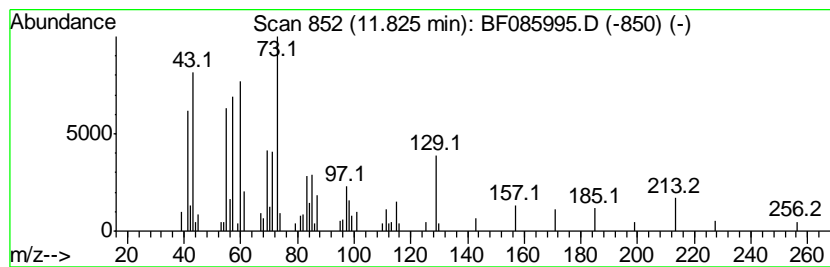
Quant Method : Z:\HPCHEM1\BNA F\METHODS\8270-BF040216.M
 Quant Title : ASP BNA STANDARDS FOR 5 POINT CALIBRATION

TIC Library : C:\DATABASE\NIST02.L
 TIC Integration Parameters: LSCINT.P

 Peak Number 4 Tetradecanoic acid Concentration Rank 4

R.T.	EstConc	Area	Relative to ISTD	R.T.
11.83	2.30 ng	107300	Phenanthrene-d10	11.29

Hit#	of	Tentative ID	MW	MolForm	CAS#	Qual
1	5	Tetradecanoic acid	228	C14H28O2	000544-63-8	83
2		Pentadecanoic acid	242	C15H30O2	001002-84-2	74
3		n-Hexadecanoic acid	256	C16H32O2	000057-10-3	72
4		n-Decanoic acid	172	C10H20O2	000334-48-5	59
5		2-Octane isothiocyanate	171	C9H17NS	069626-80-8	14



Data Path : Z:\HPCHEM1\BNA F\DATA\BF040216\
 Data File : BF085995.D
 Acq On : 2 Apr 2016 7:22
 Operator : UM/SJ
 Sample : H2055-02
 Misc :
 ALS Vial : 33 Sample Multiplier: 1

Instrument :
 BNA_F
 ClientSampled :
 BH-2(5-10)

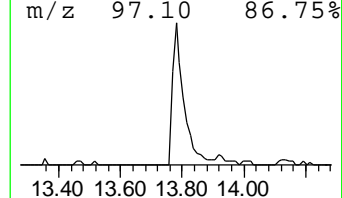
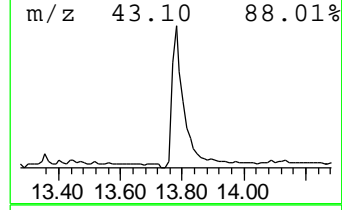
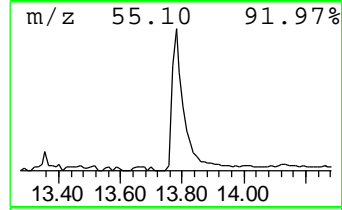
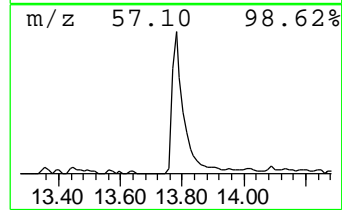
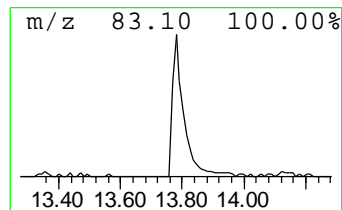
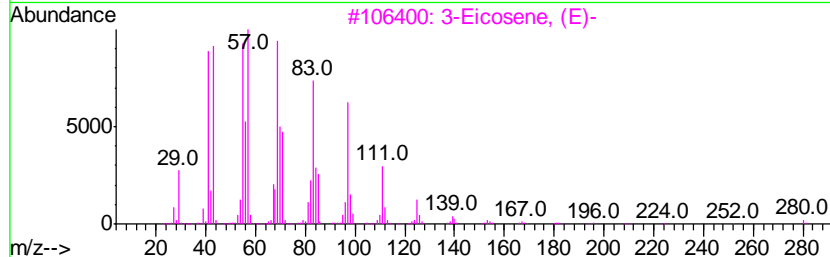
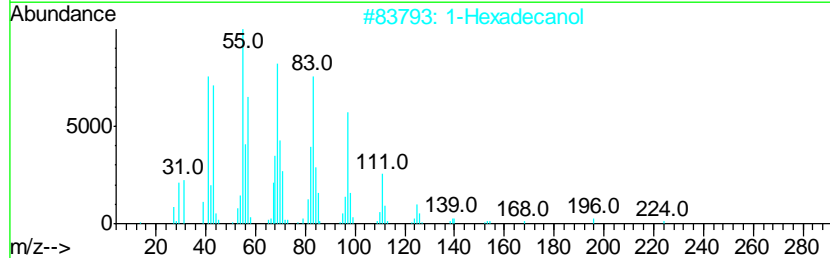
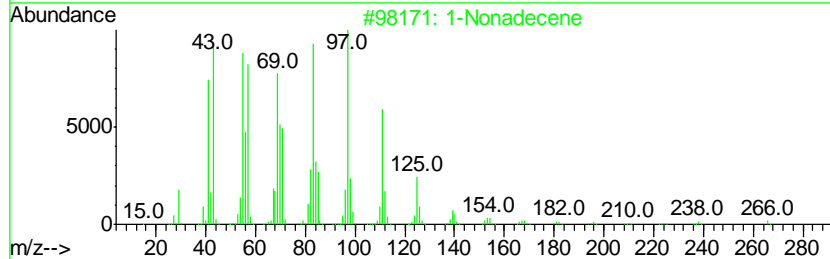
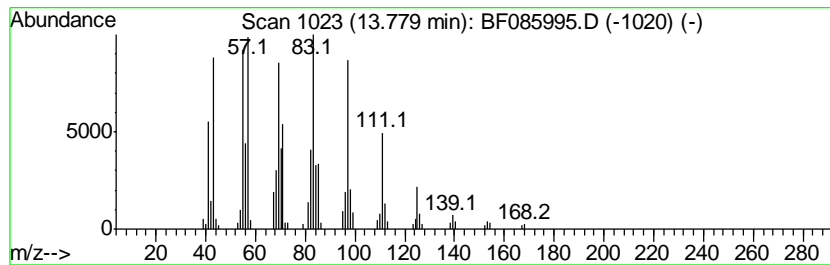
Quant Method : Z:\HPCHEM1\BNA F\METHODS\8270-BF040216.M
 Quant Title : ASP BNA STANDARDS FOR 5 POINT CALIBRATION

TIC Library : C:\DATABASE\NIST02.L
 TIC Integration Parameters: LSCINT.P

 Peak Number 5 1-Nonadecene Concentration Rank 3

R.T.	EstConc	Area	Relative to ISTD	R.T.
13.78	10.53 ng	466091	Chrysene-d12	13.93

Hit#	of	Tentative ID	MW	MolForm	CAS#	Qual
1	5	1-Nonadecene	266	C19H38	018435-45-5	91
2		1-Hexadecanol	242	C16H34O	036653-82-4	91
3		3-Eicosene, (E)-	280	C20H40	074685-33-9	90
4		3-Chloropropionic acid, heptadec...	346	C20H39ClO2	1000283-05-1	83
5		Trichloroacetic acid, hexadecyl ...	386	C18H33Cl3O2	074339-54-1	81



Data Path : Z:\HPCHEM1\BNA_F\DATA\BF040216\
Data File : BF085995.D
Acq On : 2 Apr 2016 7:22
Operator : UM/SJ
Sample : H2055-02
Misc :
ALS Vial : 33 Sample Multiplier: 1

Instrument :
BNA_F
ClientSampleId :
BH-2(5-10)

Quant Method : Z:\HPCHEM1\BNA_F\METHODS\8270-BF040216.M
Quant Title : ASP BNA STANDARDS FOR 5 POINT CALIBRATION

TIC Library : C:\DATABASE\NIST02.L
TIC Integration Parameters: LSCINT.P

TIC Top Hit name	RT	EstConc	Units	Response	--Internal Standard--			
					#	RT	Resp	Conc
3-Chloro-6-fluoro...	6.54	67.5	ng	2001500	1	6.77	592611	20.0
Tetradecane	10.72	2.2	ng	101104	4	11.29	932591	20.0
Tetradecanoic acid	11.83	2.3	ng	107300	4	11.29	932591	20.0
1-Nonadecene	13.78	10.5	ng	466091	5	13.93	885582	20.0