

Data Path : \\74.0.250.170\SVOASRV\HPCHEM1\BNA\_F\DATA\BF040218\  
 Data File : BF104131.D  
 Acq On : 2 Apr 2018 13:29  
 Operator : JU/SJ  
 Sample : J2142-09  
 Misc :  
 ALS Vial : 8 Sample Multiplier: 1

Instrument :  
 BNA\_F  
 ClientSampleId :  
 GB-RT-2342

Integration Parameters: rteint.p  
 Integrator: RTE  
 Smoothing : ON  
 Sampling : 1  
 Start Thrs: 0.2  
 Stop Thrs : 0  
 Filtering: 5  
 Min Area: 3 % of largest Peak  
 Max Peaks: 100  
 Peak Location: TOP

If leading or trailing edge < 100 prefer < Baseline drop else tangent >  
 Peak separation: 5

Method : Z:\HPCHEM1\BNA\_F\METHODS\8270-BF032818.M  
 Title : ASP BNA STANDARDS FOR 5 POINT CALIBRATION

Signal : TIC

peak #	R.T. min	first scan	max scan	last scan	PK TY	peak height	corr. area	corr. % max.	% of total
1	2.281	28	33	39	rVB	75161	102444	4.64%	0.476%
2	5.187	523	527	537	rBV	295220	368232	16.68%	1.712%
3	5.593	592	596	632	rBV	969247	1591875	72.09%	7.400%
4	6.592	762	766	786	rBV	1426673	2076697	94.05%	9.654%
5	6.728	786	789	812	rVB	1713993	2108972	95.51%	9.804%
6	6.957	825	828	850	rVV	342848	527488	23.89%	2.452%
7	7.110	850	854	884	rVB	1579001	1741759	78.88%	8.097%
8	7.522	921	924	948	rBV	925986	1401473	63.47%	6.515%
9	7.675	948	950	962	rVB3	22856	38019	1.72%	0.177%
10	8.239	1042	1046	1068	rBV	581529	763361	34.57%	3.549%
11	9.310	1224	1228	1237	rBV	2166443	2208156	100.00%	10.265%
12	9.416	1244	1246	1254	rVB4	17397	25911	1.17%	0.120%
13	9.698	1288	1294	1301	rBV	128652	152434	6.90%	0.709%
14	9.904	1326	1329	1333	rVB	57705	44269	2.00%	0.206%
15	9.998	1341	1345	1356	rBV	811757	883584	40.01%	4.107%
16	10.404	1411	1414	1417	rVB	68916	47138	2.13%	0.219%
17	10.792	1476	1480	1492	rBV	996023	1226772	55.56%	5.703%
18	10.875	1492	1494	1506	rVB	53138	79993	3.62%	0.372%
19	11.492	1595	1599	1611	rBV	775239	1010450	45.76%	4.697%
20	11.998	1682	1685	1688	rBV2	53780	60488	2.74%	0.281%
21	12.110	1700	1704	1706	rBV3	20141	24250	1.10%	0.113%
22	12.545	1774	1778	1782	rBV4	18358	22862	1.04%	0.106%
23	12.710	1802	1806	1815	rBV	226645	260401	11.79%	1.211%
24	12.869	1829	1833	1839	rBV6	12513	22794	1.03%	0.106%
25	12.939	1839	1845	1851	rBV	182817	255534	11.57%	1.188%
26	13.074	1864	1868	1879	rBV	1922728	2150508	97.39%	9.997%
27	13.151	1879	1881	1889	rVB6	22307	42341	1.92%	0.197%
28	13.269	1893	1901	1906	rBV4	30982	62108	2.81%	0.289%
29	13.504	1938	1941	1946	rBV5	16357	28284	1.28%	0.131%
30	13.963	2015	2019	2025	rBV2	185376	231494	10.48%	1.076%
31	14.163	2048	2053	2067	rBV2	632972	1014781	45.96%	4.717%
32	15.268	2237	2241	2244	rBV	64420	116474	5.27%	0.541%
33	15.592	2293	2296	2300	rBV	32736	41124	1.86%	0.191%
34	15.662	2305	2308	2313	rVV	48984	77160	3.49%	0.359%

Data Path : \\74.0.250.170\SVOASRV\HPCHEM1\BNA\_F\DATA\BF040218\  
Data File : BF104131.D  
Acq On : 2 Apr 2018 13:29  
Operator : JU/SJ  
Sample : J2142-09  
Misc :  
ALS Vial : 8 Sample Multiplier: 1

Instrument :  
BNA\_F  
ClientSampleId :  
GB-RT-2342

Integration Parameters: rteint.p  
Integrator: RTE  
Smoothing : ON Filtering: 5  
Sampling : 1 Min Area: 3 % of largest Peak  
Start Thrs: 0.2 Max Peaks: 100  
Stop Thrs : 0 Peak Location: TOP

If leading or trailing edge < 100 prefer < Baseline drop else tangent >  
Peak separation: 5

Method : Z:\HPCHEM1\BNA\_F\METHODS\8270-BF032818.M  
Title : ASP BNA STANDARDS FOR 5 POINT CALIBRATION

35	15.727	2314	2319	2338	rVB	382224	701907	31.79%	3.263%
----	--------	------	------	------	-----	--------	--------	--------	--------

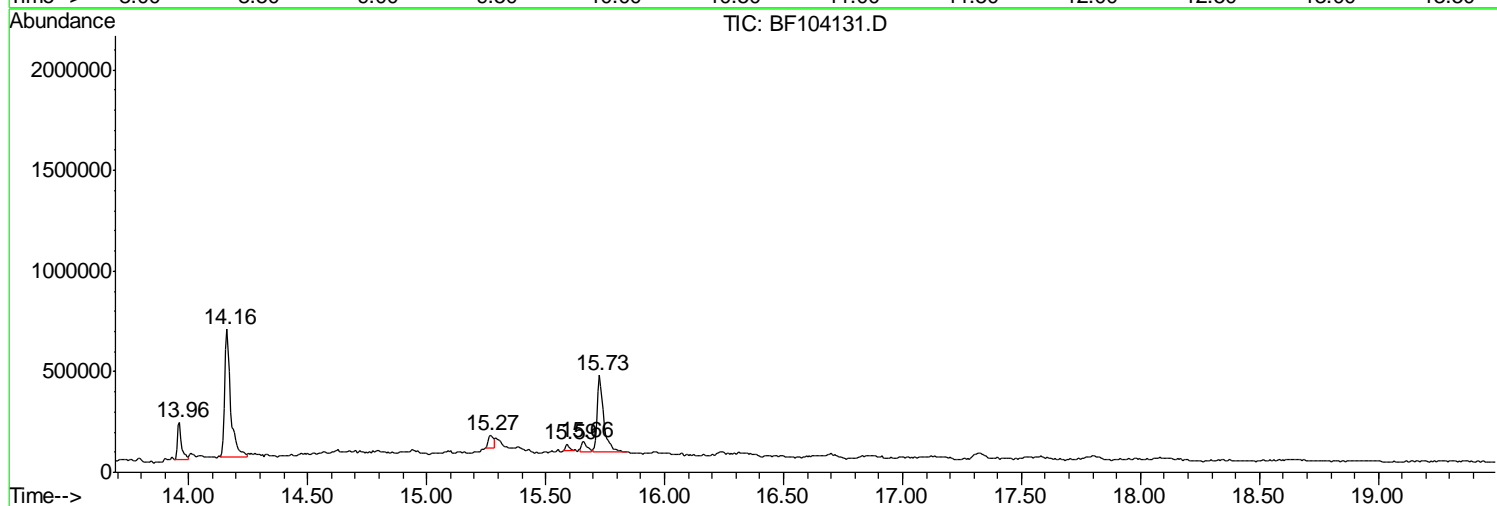
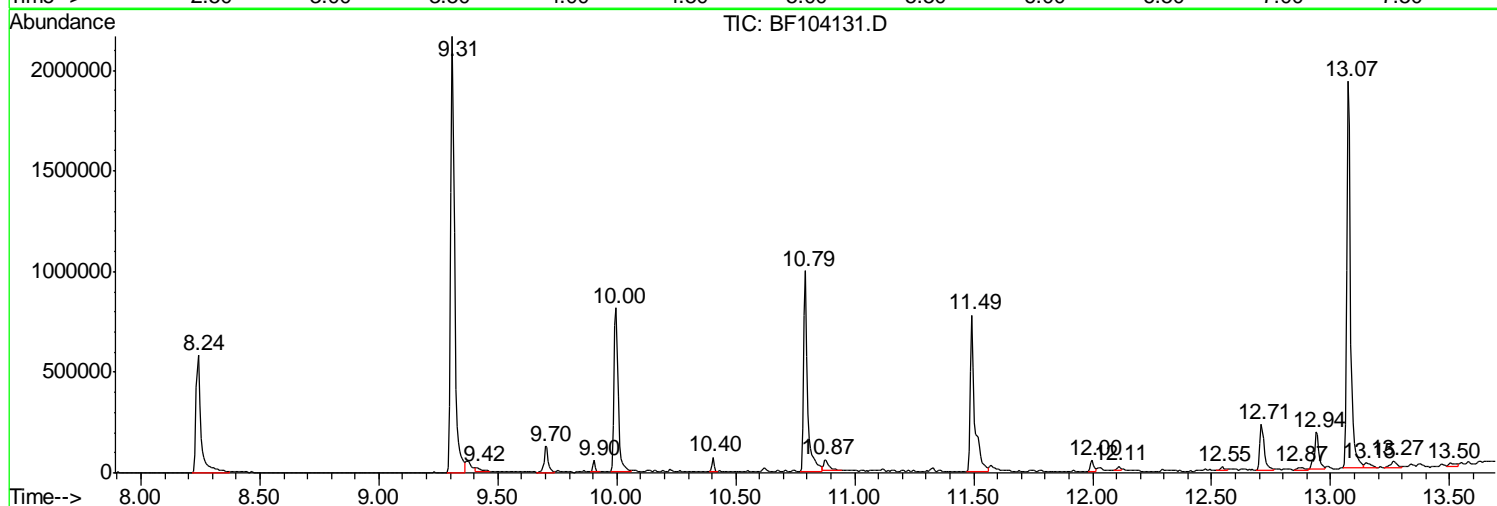
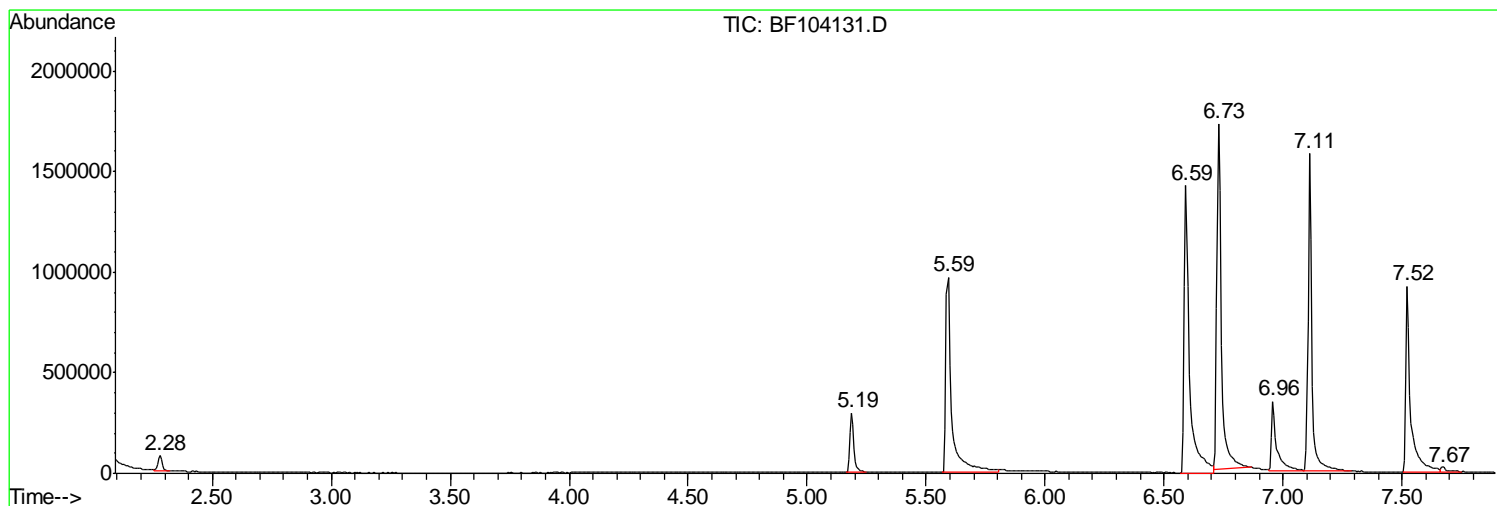
Sum of corrected areas: 21511537

Data Path : \\74.0.250.170\SVOASRV\HPCHEM1\BNA F\DATA\BF040218\  
 Data File : BF104131.D  
 Acq On : 2 Apr 2018 13:29  
 Operator : JU/SJ  
 Sample : J2142-09  
 Misc :  
 ALS Vial : 8 Sample Multiplier: 1

Instrument :  
 BNA\_F  
 ClientSampleId :  
 GB-RT-2342

Quant Method : Z:\HPCHEM1\BNA F\METHODS\8270-BF032818.M  
 Quant Title : ASP BNA STANDARDS FOR 5 POINT CALIBRATION

TIC Library : C:\DATABASE\NIST11.L  
 TIC Integration Parameters: LSCINT.P



Data Path : \\74.0.250.170\SVOASRV\HPCHEM1\BNA F\DATA\BF040218\  
 Data File : BF104131.D  
 Acq On : 2 Apr 2018 13:29  
 Operator : JU/SJ  
 Sample : J2142-09  
 Misc :  
 ALS Vial : 8 Sample Multiplier: 1

Instrument :  
 BNA\_F  
 ClientSampleID :  
 GB-RT-2342

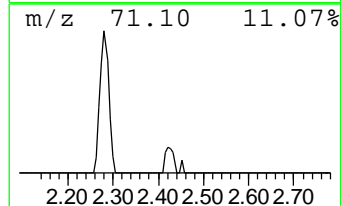
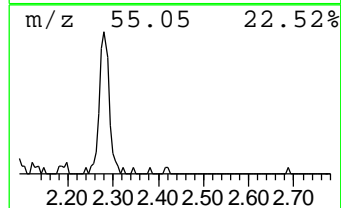
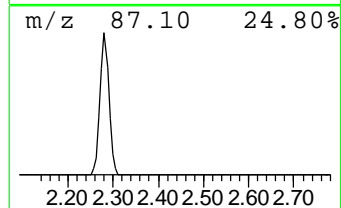
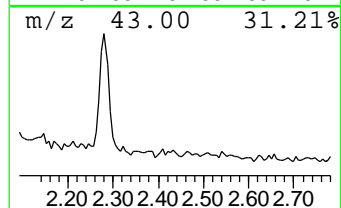
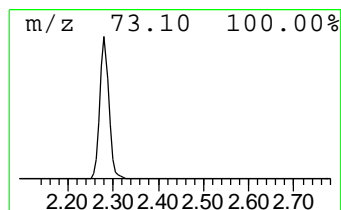
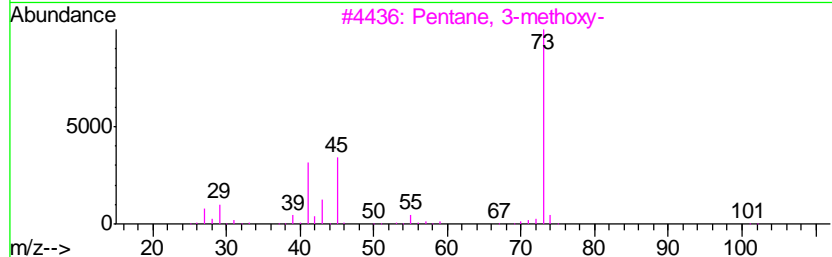
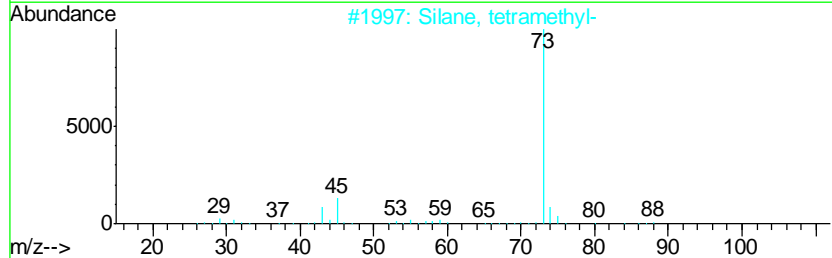
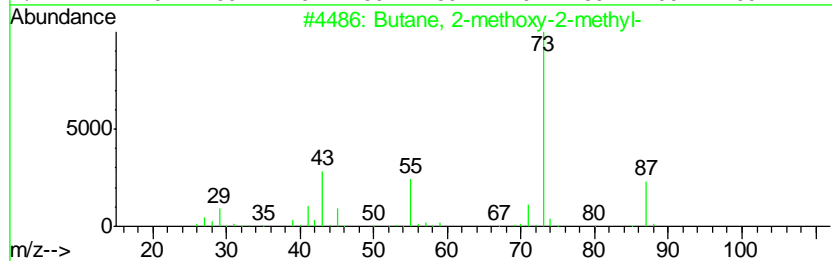
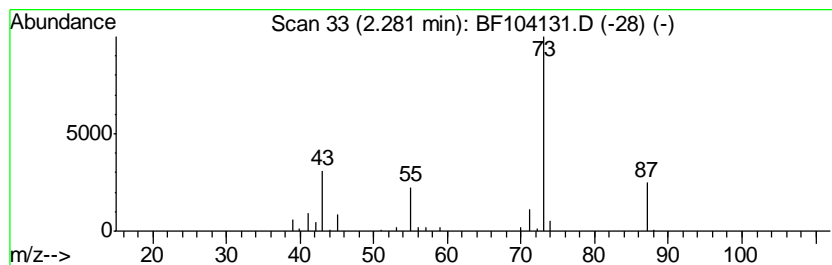
Quant Method : Z:\HPCHEM1\BNA F\METHODS\8270-BF032818.M  
 Quant Title : ASP BNA STANDARDS FOR 5 POINT CALIBRATION

TIC Library : C:\DATABASE\NIST11.L  
 TIC Integration Parameters: LSCINT.P

\*\*\*\*\*  
 Peak Number 1 Butane, 2-methoxy-2-methyl- Concentration Rank 5

R.T.	EstConc	Area	Relative to ISTD	R.T.
2.28	3.88 ng	102444	1,4-Dichlorobenzene-d4	6.96

Hit#	of	Tentative ID	MW	MolForm	CAS#	Qual
1	5	Butane, 2-methoxy-2-methyl-	102	C6H14O	000994-05-8	72
2		Silane, tetramethyl-	88	C4H12Si	000075-76-3	25
3		Pentane, 3-methoxy-	102	C6H14O	036839-67-5	23
4		1,3-Dioxolane, 2-methyl-	88	C4H8O2	000497-26-7	9
5		N-Ethylformamide	73	C3H7NO	000627-45-2	9



Data Path : \\74.0.250.170\SVOASRV\HPCHEM1\BNA F\DATA\BF040218\  
 Data File : BF104131.D  
 Acq On : 2 Apr 2018 13:29  
 Operator : JU/SJ  
 Sample : J2142-09  
 Misc :  
 ALS Vial : 8 Sample Multiplier: 1

Instrument :  
 BNA\_F  
 ClientSampled :  
 GB-RT-2342

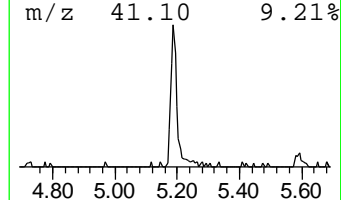
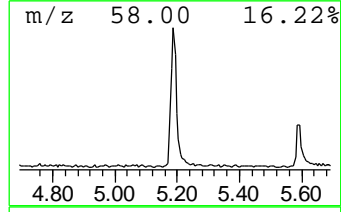
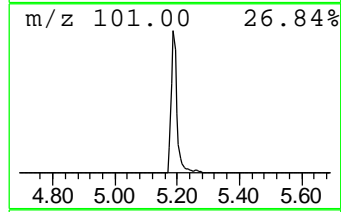
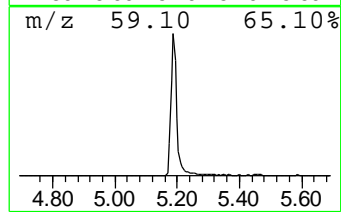
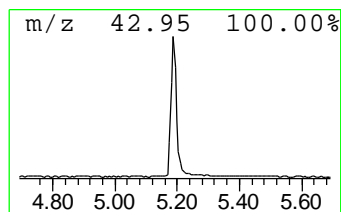
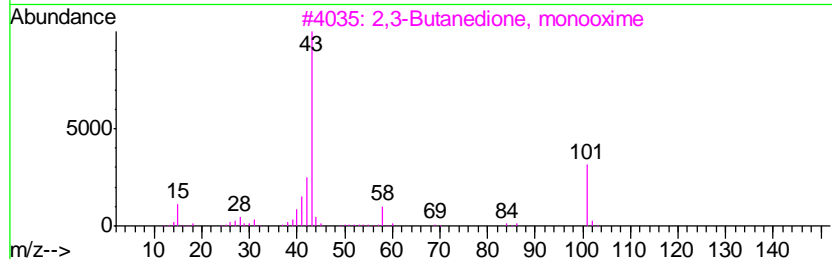
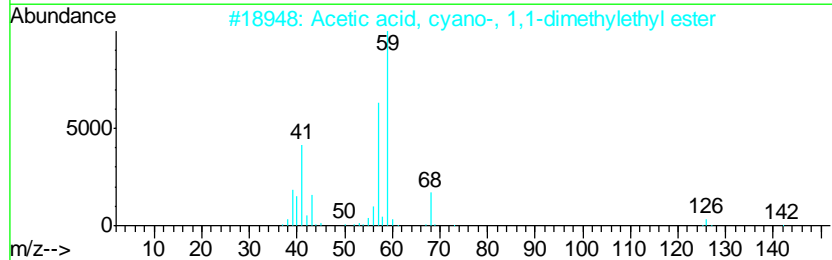
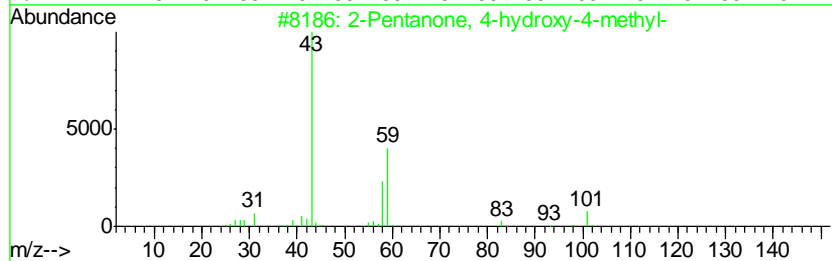
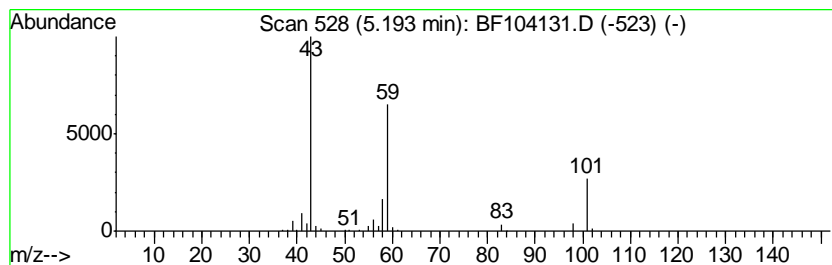
Quant Method : Z:\HPCHEM1\BNA F\METHODS\8270-BF032818.M  
 Quant Title : ASP BNA STANDARDS FOR 5 POINT CALIBRATION

TIC Library : C:\DATABASE\NIST11.L  
 TIC Integration Parameters: LSCINT.P

\*\*\*\*\*  
 Peak Number 2 2-Pentanone, 4-hydroxy-4-me... Concentration Rank 3

R.T.	EstConc	Area	Relative to ISTD	R.T.
5.19	13.96 ng	368232	1,4-Dichlorobenzene-d4	6.96

Hit#	of	Tentative ID	MW	MolForm	CAS#	Qual
1	5	2-Pentanone, 4-hydroxy-4-methyl-	116	C6H12O2	000123-42-2	56
2		Acetic acid, cyano-, 1,1-dimethy...	141	C7H11NO2	001116-98-9	25
3		2,3-Butanedione, monooxime	101	C4H7NO2	000057-71-6	9
4		5-Hexen-2-one	98	C6H10O	000109-49-9	9
5		(+)-4-Amino-4,5-dihydro-2(3H)-f...	101	C4H7NO2	016504-58-8	9



Data Path : \\74.0.250.170\SVOASRV\HPCHEM1\BNA F\DATA\BF040218\  
 Data File : BF104131.D  
 Acq On : 2 Apr 2018 13:29  
 Operator : JU/SJ  
 Sample : J2142-09  
 Misc :  
 ALS Vial : 8 Sample Multiplier: 1

Instrument :  
 BNA\_F  
 ClientSampleID :  
 GB-RT-2342

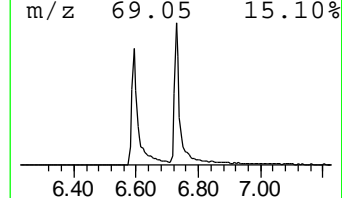
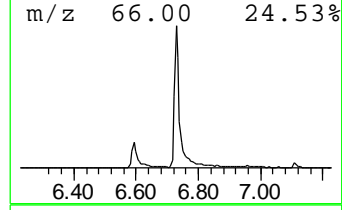
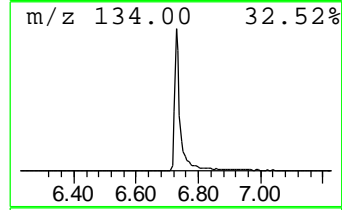
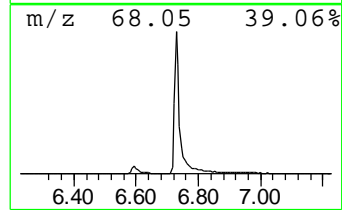
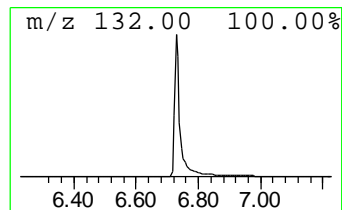
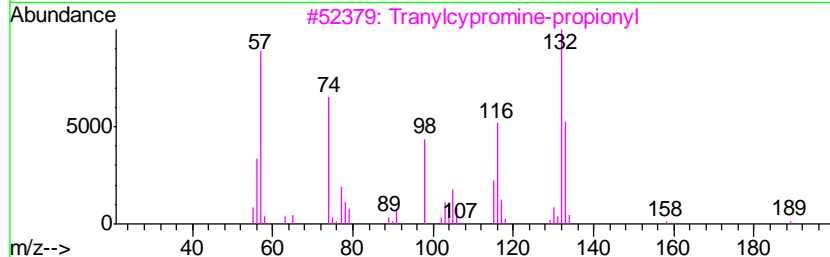
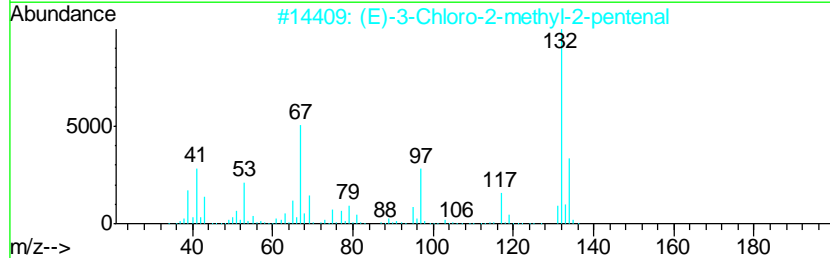
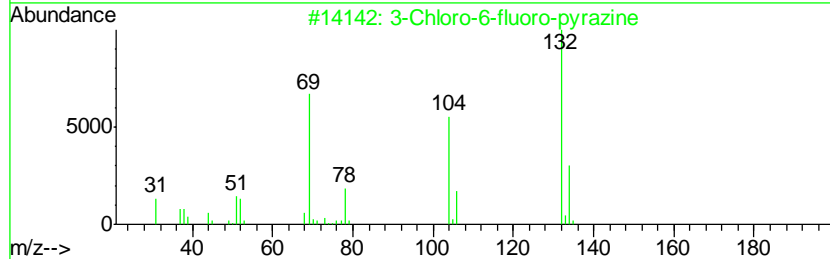
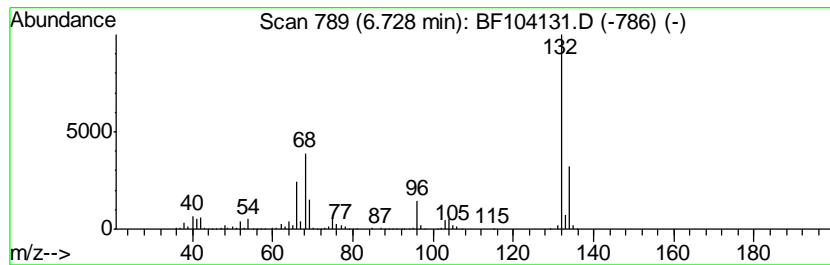
Quant Method : Z:\HPCHEM1\BNA F\METHODS\8270-BF032818.M  
 Quant Title : ASP BNA STANDARDS FOR 5 POINT CALIBRATION

TIC Library : C:\DATABASE\NIST11.L  
 TIC Integration Parameters: LSCINT.P

\*\*\*\*\*  
 Peak Number 3 unknown6.73 Concentration Rank 1

R.T.	EstConc	Area	Relative to ISTD	R.T.
6.73	79.96 ng	2108970	1,4-Dichlorobenzene-d4	6.96

Hit#	of	Tentative ID	MW	MolForm	CAS#	Qual
1	5	3-Chloro-6-fluoro-pyrazine	132	C4H2ClFN2	1000146-10-7	27
2		(E)-3-Chloro-2-methyl-2-pentenal	132	C6H9ClO	031357-76-3	17
3		Tranlycypromine-propionyl	189	C12H15NO	1000123-86-3	10
4		4-Chloro-6-fluoro-pyrimidine	132	C4H2ClFN2	051422-01-6	9
5		4-Methylpyrrolo[1,2-a]pyrazine	132	C8H8N2	064608-60-2	9



Data Path : \\74.0.250.170\SVOASRV\HPCHEM1\BNA F\DATA\BF040218\  
 Data File : BF104131.D  
 Acq On : 2 Apr 2018 13:29  
 Operator : JU/SJ  
 Sample : J2142-09  
 Misc :  
 ALS Vial : 8 Sample Multiplier: 1

Instrument :  
 BNA\_F  
 ClientSampleID :  
 GB-RT-2342

Quant Method : Z:\HPCHEM1\BNA F\METHODS\8270-BF032818.M  
 Quant Title : ASP BNA STANDARDS FOR 5 POINT CALIBRATION

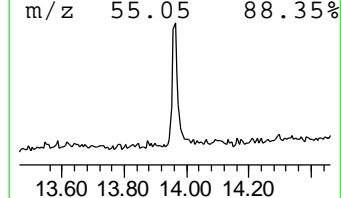
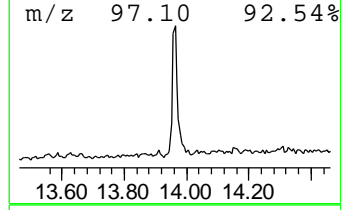
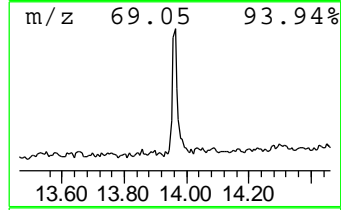
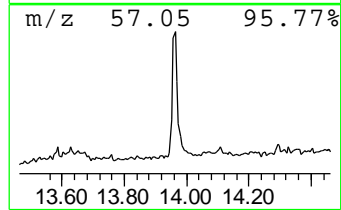
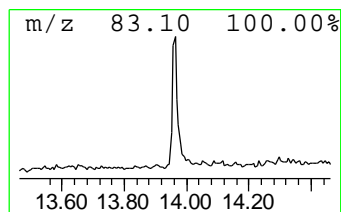
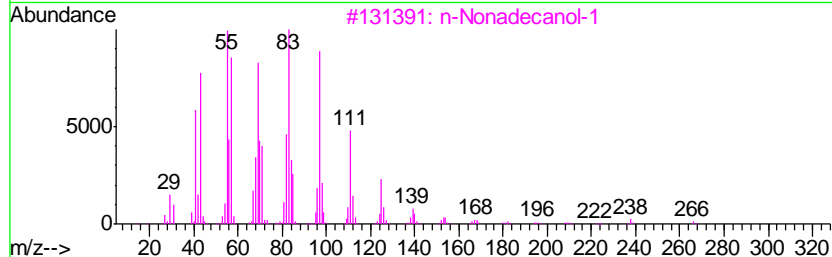
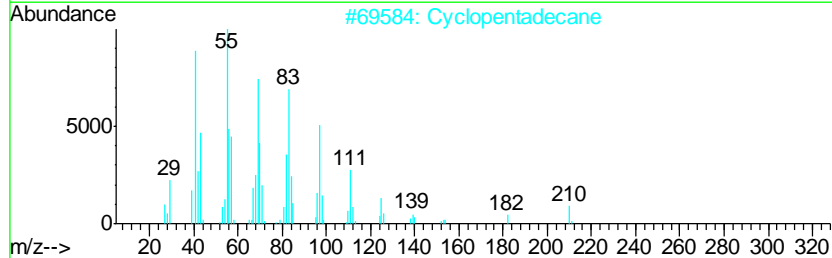
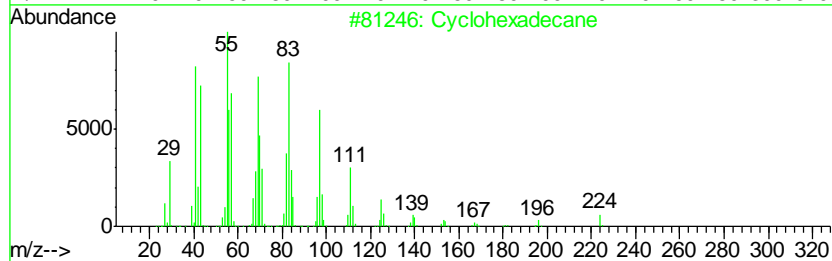
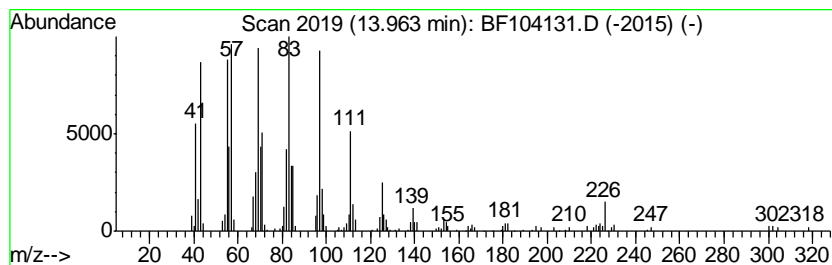
TIC Library : C:\DATABASE\NIST11.L  
 TIC Integration Parameters: LSCINT.P

\*\*\*\*\*  
 Peak Number 5 Cyclohexadecane Concentration Rank 4

R.T.	EstConc	Area	Relative to ISTD	R.T.
13.96	4.56 ng	231494	Chrysene-d12	14.16

Hit#	of	Tentative ID	MW	MolForm	CAS#	Qual
1	5	Cyclohexadecane	224	C16H32	000295-65-8	97
2		Cyclopentadecane	210	C15H30	000295-48-7	97
3		n-Nonadecanol-1	284	C19H40O	001454-84-8	95
4		n-Tetracosanol-1	354	C24H50O	000506-51-4	95
5		1-Heneicosyl formate	340	C22H44O2	077899-03-7	95



Data Path : \\74.0.250.170\SVOASRV\HPCHEM1\BNA\_F\DATA\BF040218\  
Data File : BF104131.D  
Acq On : 2 Apr 2018 13:29  
Operator : JU/SJ  
Sample : J2142-09  
Misc :  
ALS Vial : 8 Sample Multiplier: 1

Instrument :  
BNA\_F  
ClientSampleId :  
GB-RT-2342

Quant Method : Z:\HPCHEM1\BNA\_F\METHODS\8270-BF032818.M  
Quant Title : ASP BNA STANDARDS FOR 5 POINT CALIBRATION

TIC Library : C:\DATABASE\NIST11.L  
TIC Integration Parameters: LSCINT.P

TIC Top Hit name	RT	EstConc	Units	Response	--Internal Standard--			
					#	RT	Resp	Conc
Butane, 2-methoxy...	2.28	3.9	ng	102444	1	6.96	527488	20.0
2-Pentanone, 4-hy...	5.19	14.0	ng	368232	1	6.96	527488	20.0
unknown6.73	6.73	80.0	ng	2108970	1	6.96	527488	20.0
Cyclohexadecane	13.96	4.6	ng	231494	5	14.16	1014780	20.0