

Data Path : Z:\HPCHEM1\BNA F\DATA\BF040815\
 Data File : BF078350.D
 Acq On : 8 Apr 2015 22:56
 Operator : TP/IZ
 Sample : G1794-05
 Misc :
 ALS Vial : 12 Sample Multiplier: 1

Instrument :
 BNA_F
 ClientSampleId :
 OUTFALL-2

Integration Parameters: rteint.p
 Integrator: RTE
 Smoothing : ON
 Sampling : 1
 Start Thrs: 0.2
 Stop Thrs : 0

Filtering: 5
 Min Area: 3 % of largest Peak
 Max Peaks: 100
 Peak Location: TOP

If leading or trailing edge < 100 prefer < Baseline drop else tangent >
 Peak separation: 5

Method : Z:\HPCHEM1\BNA F\METHODS\8270-BF040115.M
 Title : ASP BNA STANDARDS FOR 5 POINT CALIBRATION

Signal : TIC

peak #	R.T. min	first scan	max scan	last scan	PK TY	peak height	corr. area	corr. % max.	% of total
1	1.092	15	18	20	rBV	1268878	1396358	100.00%	6.182%
2	1.195	23	27	30	rVB	237910	425439	30.47%	1.883%
3	1.344	38	40	43	rVB	115723	126507	9.06%	0.560%
4	1.652	65	67	77	rVB	48797	75550	5.41%	0.334%
5	4.613	324	326	331	rBV	62991	98776	7.07%	0.437%
6	5.184	373	376	379	rBV	731018	812651	58.20%	3.598%
7	6.510	490	492	500	rVB	572143	867787	62.15%	3.842%
8	6.624	500	502	505	rBV	642324	887547	63.56%	3.929%
9	6.910	525	527	530	rBB	243763	232264	16.63%	1.028%
10	7.093	541	543	546	rBV	559818	657300	47.07%	2.910%
11	7.607	586	588	591	rBV	406416	510509	36.56%	2.260%
12	8.487	663	665	670	rVB2	361306	401606	28.76%	1.778%
13	9.379	740	743	745	rVB	98244	119435	8.55%	0.529%
14	9.493	750	753	755	rBV	85941	73894	5.29%	0.327%
15	9.836	781	783	786	rBV	966722	930613	66.65%	4.120%
16	9.962	792	794	795	rBV	25123	31945	2.29%	0.141%
17	10.156	808	811	813	rBB	24204	37095	2.66%	0.164%
18	10.236	816	818	820	rVV	31655	44474	3.18%	0.197%
19	10.270	820	821	824	rVB	26780	25591	1.83%	0.113%
20	10.350	826	828	830	rBV	45024	40023	2.87%	0.177%
21	10.648	852	854	856	rBV	306409	379753	27.20%	1.681%
22	10.693	856	858	860	rVB	296261	272213	19.49%	1.205%
23	10.911	875	877	879	rBV	155013	169498	12.14%	0.750%
24	11.333	912	914	916	rVB	196400	234819	16.82%	1.040%
25	11.413	917	921	922	rBV	16808	28902	2.07%	0.128%
26	11.436	922	923	925	rVV	34828	24590	1.76%	0.109%
27	11.528	930	931	932	rBV	31020	30437	2.18%	0.135%
28	11.551	932	933	935	rVB	26198	30570	2.19%	0.135%
29	11.631	937	940	942	rBV	622253	647509	46.37%	2.866%
30	12.008	969	973	975	rBV2	25342	43443	3.11%	0.192%
31	12.316	997	1000	1001	rBV	31463	33010	2.36%	0.146%
32	12.351	1001	1003	1005	rVB	66073	58349	4.18%	0.258%
33	12.476	1012	1014	1015	rBV	335762	366212	26.23%	1.621%
34	12.511	1015	1017	1019	rVV	1192644	1112468	79.67%	4.925%

Data Path : Z:\HPCHEM1\BNA F\DATA\BF040815\
 Data File : BF078350.D
 Acq On : 8 Apr 2015 22:56
 Operator : TP/IZ
 Sample : G1794-05
 Misc :
 ALS Vial : 12 Sample Multiplier: 1

Instrument :
 BNA_F
 ClientSampleId :
 OUTFALL-2

Integration Parameters: rteint.p
 Integrator: RTE
 Smoothing : ON
 Sampling : 1
 Start Thrs: 0.2
 Stop Thrs : 0

Filtering: 5
 Min Area: 3 % of largest Peak
 Max Peaks: 100
 Peak Location: TOP

If leading or trailing edge < 100 prefer < Baseline drop else tangent >
 Peak separation: 5

Method : Z:\HPCHEM1\BNA F\METHODS\8270-BF040115.M
 Title : ASP BNA STANDARDS FOR 5 POINT CALIBRATION

35	12.568	1019	1022	1025	rVV	271602	343048	24.57%	1.519%
36	12.614	1025	1026	1030	rVB	17000	29513	2.11%	0.131%
37	12.785	1039	1041	1043	rBV	151665	137501	9.85%	0.609%
38	13.105	1067	1069	1071	rBV	85547	91766	6.57%	0.406%
39	13.139	1071	1072	1075	rVB	129690	120627	8.64%	0.534%
40	13.196	1075	1077	1079	rBV	54486	59631	4.27%	0.264%
41	13.231	1079	1080	1082	rVV2	139683	199266	14.27%	0.882%
42	13.482	1100	1102	1106	rVB2	72355	109690	7.86%	0.486%
43	13.791	1127	1129	1131	rBV	27576	42247	3.03%	0.187%
44	13.825	1131	1132	1136	rVV2	22061	42337	3.03%	0.187%
45	13.894	1136	1138	1142	rVB4	13532	33893	2.43%	0.150%
46	13.974	1142	1145	1148	rBV	1022373	1123043	80.43%	4.972%
47	14.054	1151	1152	1154	rBV2	19304	22444	1.61%	0.099%
48	14.157	1158	1161	1163	rBV	42606	48823	3.50%	0.216%
49	14.248	1166	1169	1171	rBV	931769	1079635	77.32%	4.779%
50	14.282	1171	1172	1174	rVV	22738	29781	2.13%	0.132%
51	14.328	1174	1176	1177	rVB	26673	34433	2.47%	0.152%
52	14.419	1182	1184	1186	rBV	43080	80492	5.76%	0.356%
53	14.477	1186	1189	1191	rVB	757413	936187	67.04%	4.144%
54	14.534	1191	1194	1196	rBV2	37357	73521	5.27%	0.325%
55	14.579	1196	1198	1200	rVB	24136	23789	1.70%	0.105%
56	14.671	1204	1206	1208	rVB	166341	180060	12.89%	0.797%
57	14.751	1211	1213	1215	rBV	154381	164799	11.80%	0.730%
58	14.797	1215	1217	1218	rBV	89934	105588	7.56%	0.467%
59	14.831	1218	1220	1222	rVB	42114	59995	4.30%	0.266%
60	14.899	1225	1226	1228	rVB	26458	31623	2.26%	0.140%
61	14.945	1228	1230	1233	rBV	25652	42099	3.01%	0.186%
62	15.208	1249	1253	1256	rVB	24455	50566	3.62%	0.224%
63	15.300	1256	1261	1264	rBV4	27031	79891	5.72%	0.354%
64	15.425	1270	1272	1274	rBV	64869	86554	6.20%	0.383%
65	15.471	1274	1276	1279	rBV2	70178	134516	9.63%	0.595%
66	15.517	1279	1280	1282	rVB2	37370	39891	2.86%	0.177%
67	15.562	1282	1284	1287	rVB2	33187	57655	4.13%	0.255%
68	15.654	1287	1292	1295	rBV3	51075	141096	10.10%	0.625%
69	15.734	1295	1299	1301	rBV2	581994	1093175	78.29%	4.839%
70	15.780	1301	1303	1305	rVV	368518	476825	34.15%	2.111%
71	15.814	1305	1306	1308	rVB2	32646	31722	2.27%	0.140%

Data Path : Z:\HPCHEM1\BNA F\DATA\BF040815\
 Data File : BF078350.D
 Acq On : 8 Apr 2015 22:56
 Operator : TP/IZ
 Sample : G1794-05
 Misc :
 ALS Vial : 12 Sample Multiplier: 1

Instrument :
 BNA_F
 ClientSampleId :
 OUTFALL-2

Integration Parameters: rteint.p
 Integrator: RTE
 Smoothing : ON
 Sampling : 1
 Start Thrs: 0.2
 Stop Thrs : 0

Filtering: 5
 Min Area: 3 % of largest Peak
 Max Peaks: 100
 Peak Location: TOP

If leading or trailing edge < 100 prefer < Baseline drop else tangent >
 Peak separation: 5

Method : Z:\HPCHEM1\BNA F\METHODS\8270-BF040115.M
 Title : ASP BNA STANDARDS FOR 5 POINT CALIBRATION

72	15.871	1308	1311	1313	rBV	96233	138058	9.89%	0.611%
73	15.917	1313	1315	1319	rBV5	13399	28450	2.04%	0.126%
74	15.997	1320	1322	1324	rVB	63326	71353	5.11%	0.316%
75	16.042	1324	1326	1333	rVB	52881	93988	6.73%	0.416%
76	16.145	1333	1335	1338	rBV2	17977	52507	3.76%	0.232%
77	16.237	1340	1343	1345	rBV	69458	98342	7.04%	0.435%
78	16.282	1345	1347	1349	rVB3	29760	48930	3.50%	0.217%
79	16.351	1350	1353	1354	rBV	40146	64330	4.61%	0.285%
80	16.408	1357	1358	1360	rVV2	47592	51560	3.69%	0.228%
81	16.454	1360	1362	1364	rVV3	45982	73881	5.29%	0.327%
82	16.500	1364	1366	1369	rVB	33839	50351	3.61%	0.223%
83	16.557	1369	1371	1374	rBV3	11755	26566	1.90%	0.118%
84	16.625	1374	1377	1379	rBV4	38285	68938	4.94%	0.305%
85	16.843	1394	1396	1398	rBV	20331	27218	1.95%	0.120%
86	17.014	1408	1411	1416	rBV	390711	807565	57.83%	3.575%
87	17.128	1419	1421	1423	rVB	66613	73984	5.30%	0.328%
88	17.231	1428	1430	1433	rBV2	63818	132534	9.49%	0.587%
89	17.323	1436	1438	1441	rVB	203138	229060	16.40%	1.014%
90	17.380	1441	1443	1446	rVB	295585	360549	25.82%	1.596%
91	17.448	1446	1449	1451	rBV	353536	475554	34.06%	2.105%
92	17.620	1461	1464	1465	rBV2	31387	71703	5.14%	0.317%
93	17.791	1476	1479	1482	rVB3	38740	66614	4.77%	0.295%
94	17.940	1490	1492	1494	rVB	33141	47219	3.38%	0.209%
95	17.997	1494	1497	1499	rBV	31361	57288	4.10%	0.254%
96	18.568	1545	1547	1550	rVB2	29015	49629	3.55%	0.220%
97	18.706	1557	1559	1564	rVB2	137708	279092	19.99%	1.236%
98	18.866	1571	1573	1575	rBV	33497	72799	5.21%	0.322%
99	19.071	1588	1591	1599	rVB	124586	265936	19.04%	1.177%
100	19.231	1603	1605	1606	rBV	27452	40183	2.88%	0.178%

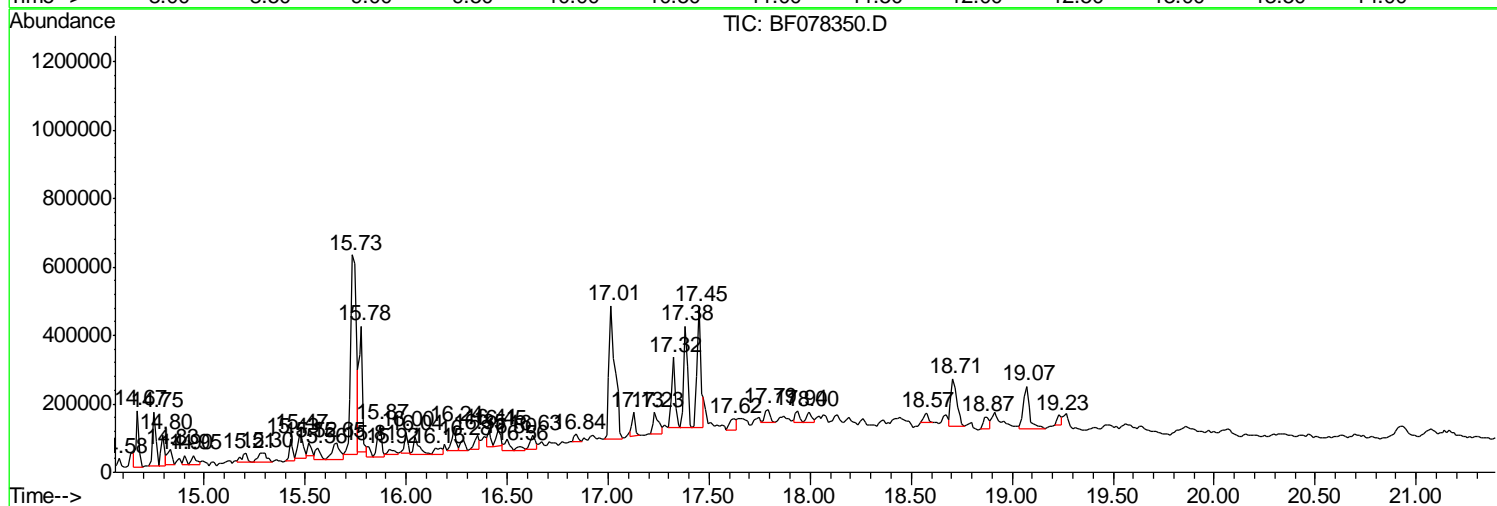
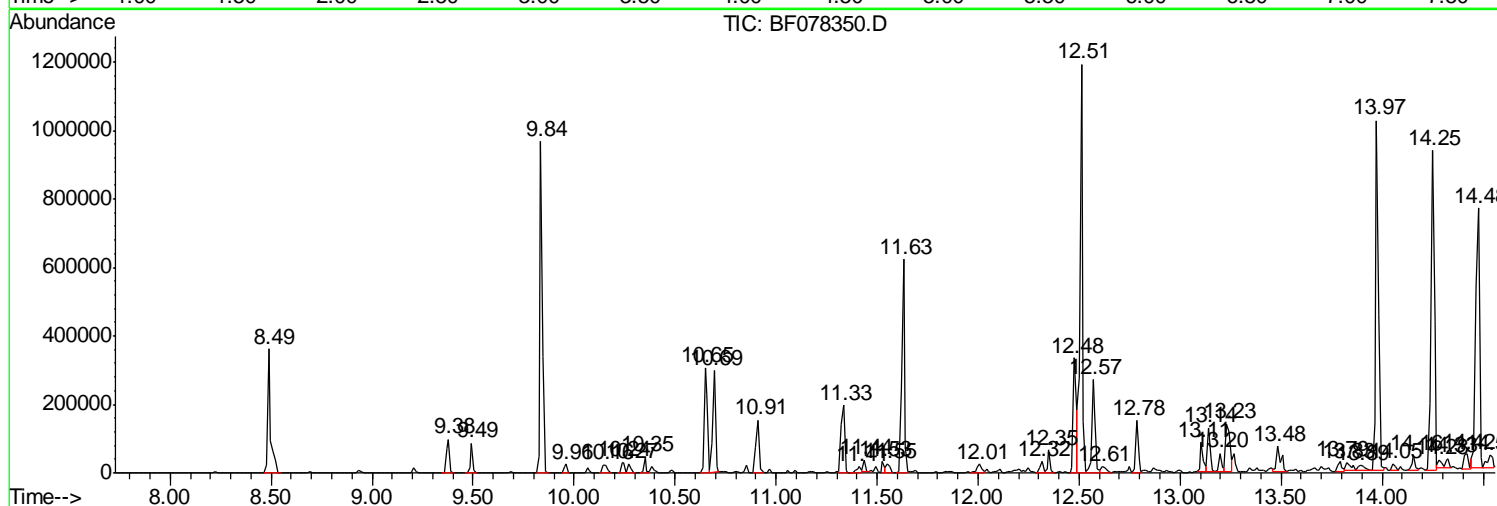
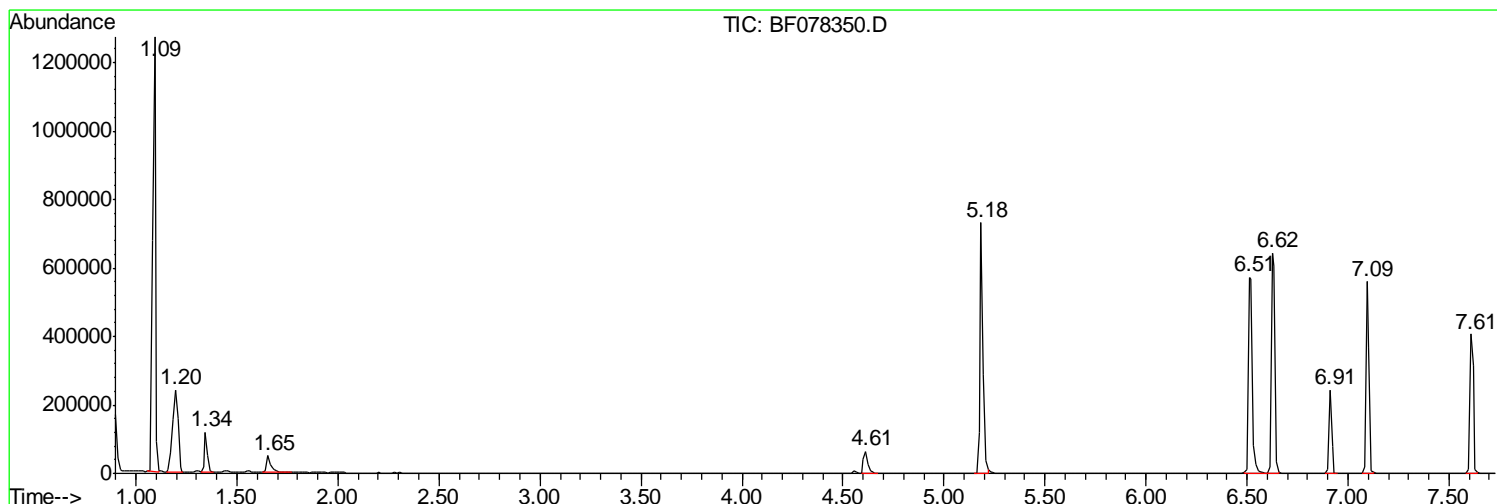
Sum of corrected areas: 22589040

Data Path : Z:\HPCHEM1\BNA F\DATA\BF040815\
 Data File : BF078350.D
 Acq On : 8 Apr 2015 22:56
 Operator : TP/IZ
 Sample : G1794-05
 Misc :
 ALS Vial : 12 Sample Multiplier: 1

Instrument :
 BNA_F
 Client Sampled :
 OUTFALL-2

Quant Method : Z:\HPCHEM1\BNA F\METHODS\8270-BF040115.M
 Quant Title : ASP BNA STANDARDS FOR 5 POINT CALIBRATION

TIC Library : C:\DATABASE\NIST02.L
 TIC Integration Parameters: LSCINT.P



Data Path : Z:\HPCHEM1\BNA F\DATA\BF040815\
 Data File : BF078350.D
 Acq On : 8 Apr 2015 22:56
 Operator : TP/IZ
 Sample : G1794-05
 Misc :
 ALS Vial : 12 Sample Multiplier: 1

Instrument :
 BNA_F
 ClientSampled :
 OUTFALL-2

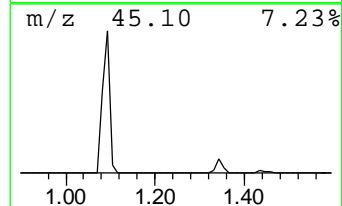
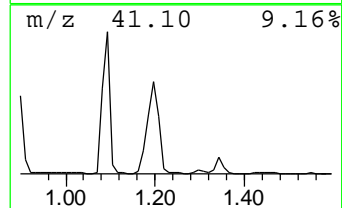
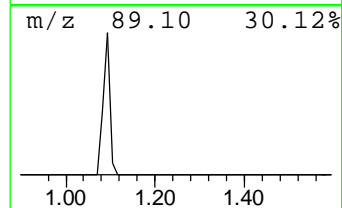
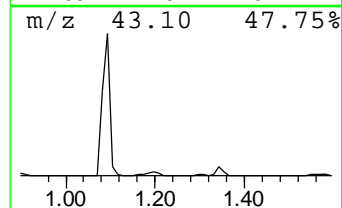
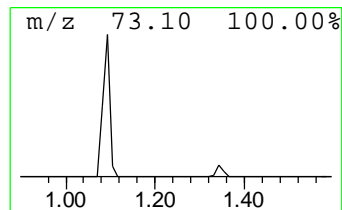
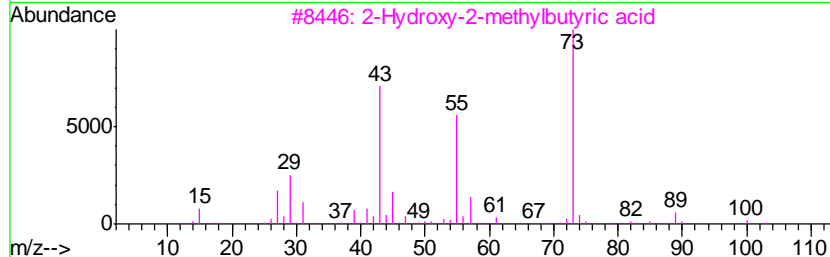
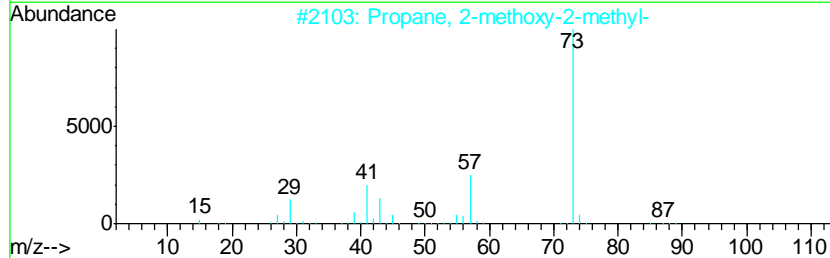
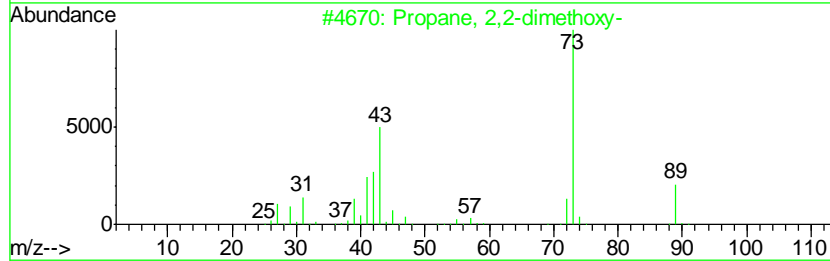
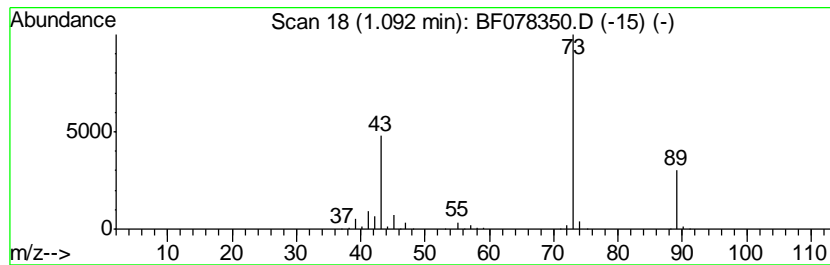
Quant Method : Z:\HPCHEM1\BNA F\METHODS\8270-BF040115.M
 Quant Title : ASP BNA STANDARDS FOR 5 POINT CALIBRATION

TIC Library : C:\DATABASE\NIST02.L
 TIC Integration Parameters: LSCINT.P

 Peak Number 1 unknown1.09 Concentration Rank 1

R.T.	EstConc	Area	Relative to ISTD	R.T.
1.09	120.24 ng	1396360	1,4-Dichlorobenzene-d4	6.91

Hit#	of	Tentative ID	MW	MolForm	CAS#	Qual
1	5	Propane, 2,2-dimethoxy-	104	C5H12O2	000077-76-9	38
2		Propane, 2-methoxy-2-methyl-	88	C5H12O	001634-04-4	9
3		2-Hydroxy-2-methylbutyric acid	118	C5H10O3	003739-30-8	9
4		Borane, dimethoxy-	74	C2H7BO2	004542-61-4	7
5		N-Ethylformamide	73	C3H7NO	000627-45-2	5



Data Path : Z:\HPCHEM1\BNA F\DATA\BF040815\
 Data File : BF078350.D
 Acq On : 8 Apr 2015 22:56
 Operator : TP/IZ
 Sample : G1794-05
 Misc :
 ALS Vial : 12 Sample Multiplier: 1

Instrument :
 BNA_F
 ClientSampled :
 OUTFALL-2

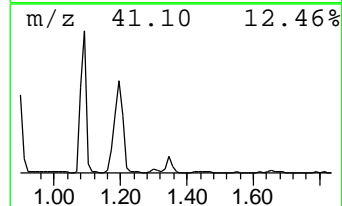
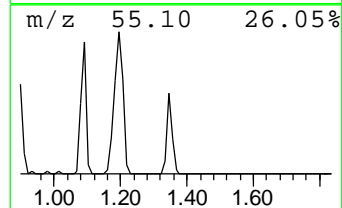
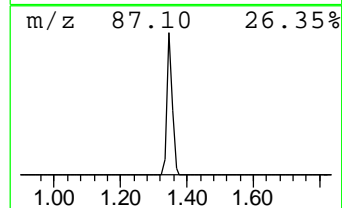
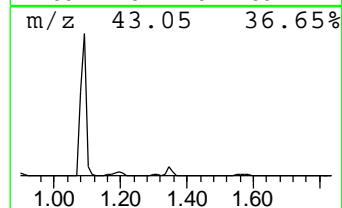
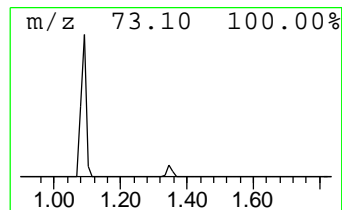
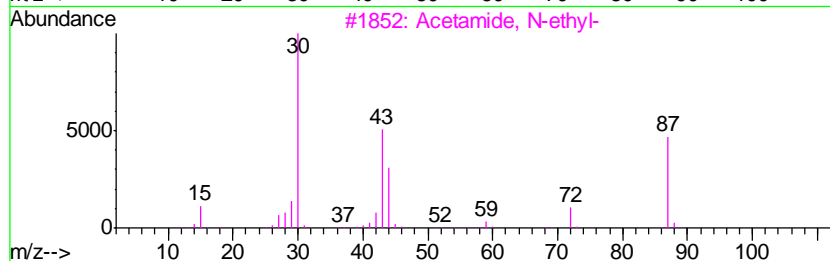
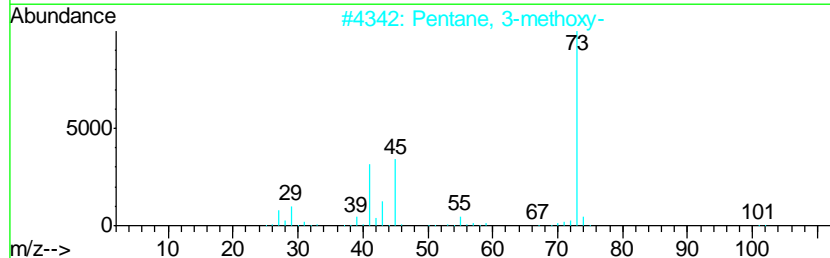
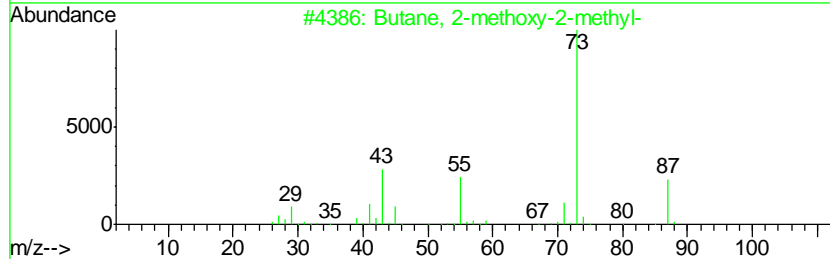
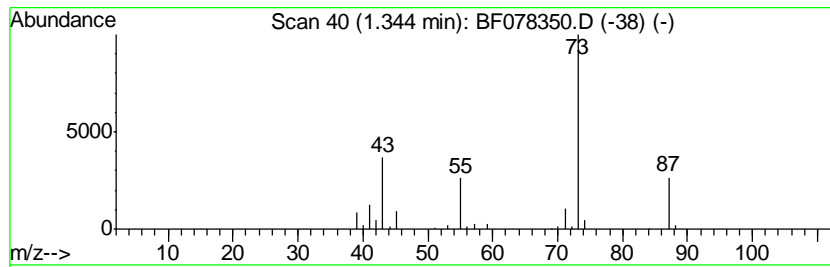
Quant Method : Z:\HPCHEM1\BNA F\METHODS\8270-BF040115.M
 Quant Title : ASP BNA STANDARDS FOR 5 POINT CALIBRATION

TIC Library : C:\DATABASE\NIST02.L
 TIC Integration Parameters: LSCINT.P

 Peak Number 3 Butane, 2-methoxy-2-methyl- Concentration Rank 5

R.T.	EstConc	Area	Relative to ISTD	R.T.
1.34	10.89 ng	126507	1,4-Dichlorobenzene-d4	6.91

Hit#	of	Tentative ID	MW	MolForm	CAS#	Qual
1	5	Butane, 2-methoxy-2-methyl-	102	C6H14O	000994-05-8	78
2		Pentane, 3-methoxy-	102	C6H14O	036839-67-5	17
3		Acetamide, N-ethyl-	87	C4H9NO	000625-50-3	10
4		1,3-Dioxolane, 2-methyl-	88	C4H8O2	000497-26-7	9
5		N-Ethylformamide	73	C3H7NO	000627-45-2	9



Data Path : Z:\HPCHEM1\BNA F\DATA\BF040815\
 Data File : BF078350.D
 Acq On : 8 Apr 2015 22:56
 Operator : TP/IZ
 Sample : G1794-05
 Misc :
 ALS Vial : 12 Sample Multiplier: 1

Instrument :
 BNA_F
 ClientSampled :
 OUTFALL-2

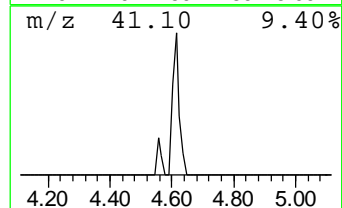
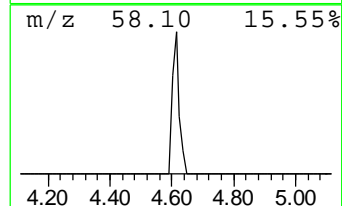
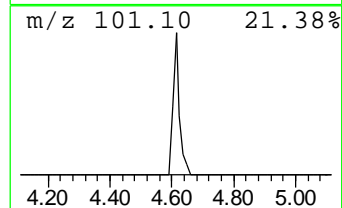
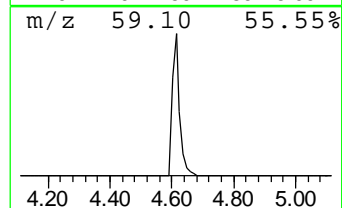
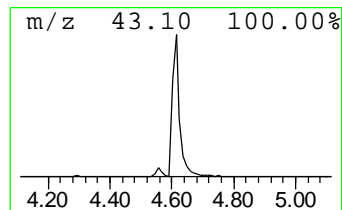
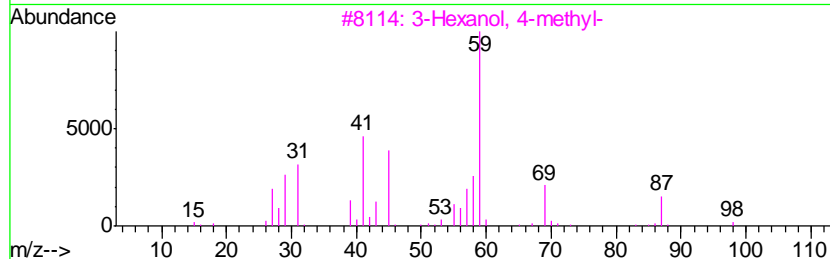
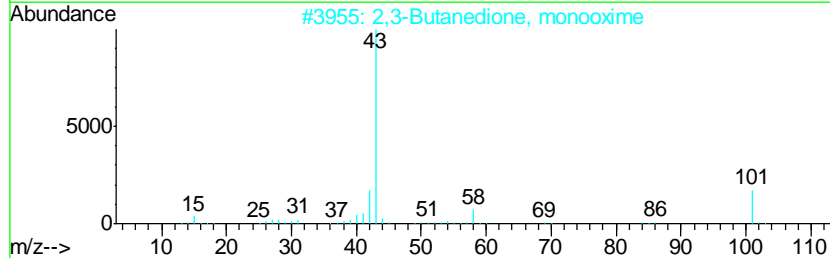
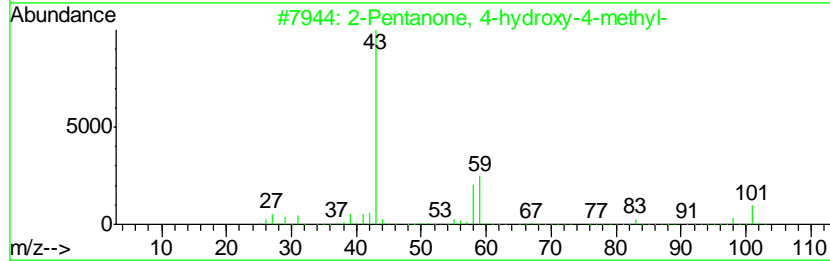
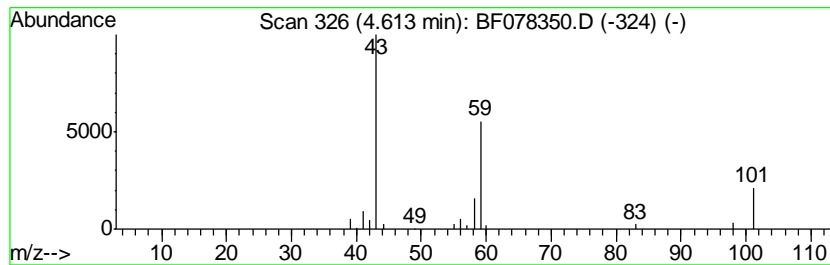
Quant Method : Z:\HPCHEM1\BNA F\METHODS\8270-BF040115.M
 Quant Title : ASP BNA STANDARDS FOR 5 POINT CALIBRATION

TIC Library : C:\DATABASE\NIST02.L
 TIC Integration Parameters: LSCINT.P

 Peak Number 5 2-Pentanone, 4-hydroxy-4-me... Concentration Rank 8

R.T.	EstConc	Area	Relative to ISTD	R.T.
4.61	8.51 ng	98776	1,4-Dichlorobenzene-d4	6.91

Hit#	of	Tentative ID	MW	MolForm	CAS#	Qual
1	5	2-Pentanone, 4-hydroxy-4-methyl-	116	C6H12O2	000123-42-2	64
2		2,3-Butanedione, monooxime	101	C4H7NO2	000057-71-6	9
3		3-Hexanol, 4-methyl-	116	C7H16O	000615-29-2	9
4		Acetic acid, 1,1-dimethylethyl e...	116	C6H12O2	000540-88-5	9
5		4-Hydroxy-3-hexanone	116	C6H12O2	004984-85-4	9



Data Path : Z:\HPCHEM1\BNA F\DATA\BF040815\
 Data File : BF078350.D
 Acq On : 8 Apr 2015 22:56
 Operator : TP/IZ
 Sample : G1794-05
 Misc :
 ALS Vial : 12 Sample Multiplier: 1

Instrument :
 BNA_F
 ClientSampleID :
 OUTFALL-2

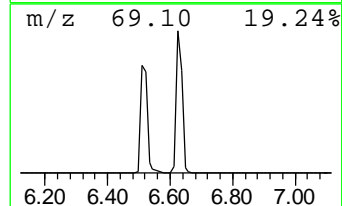
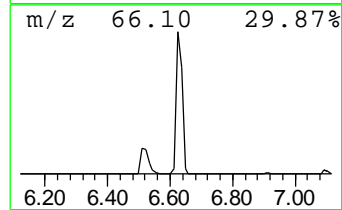
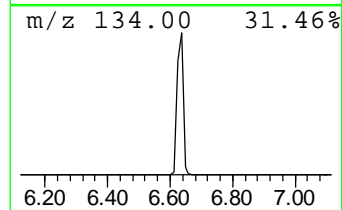
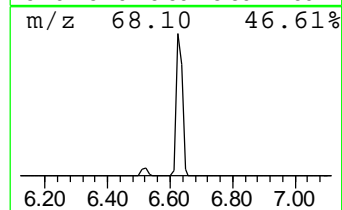
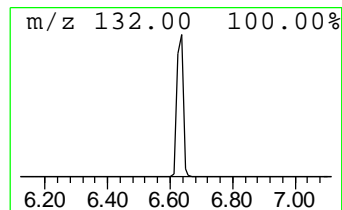
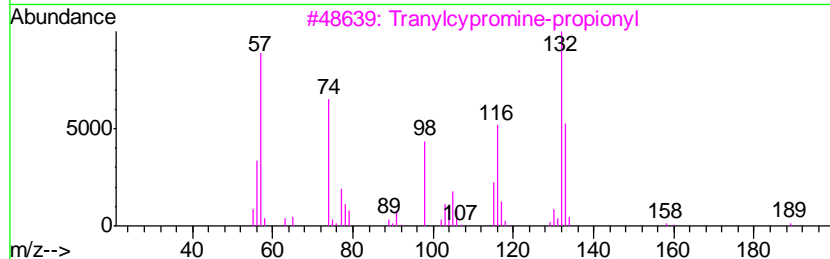
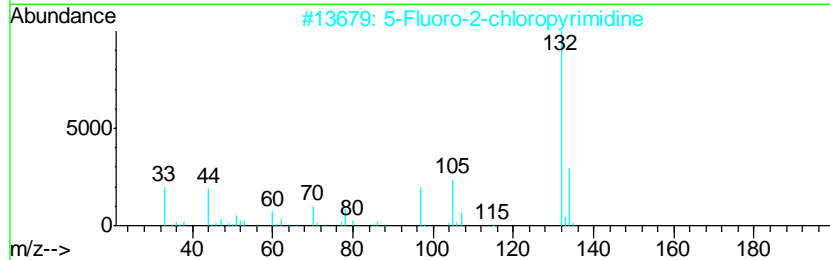
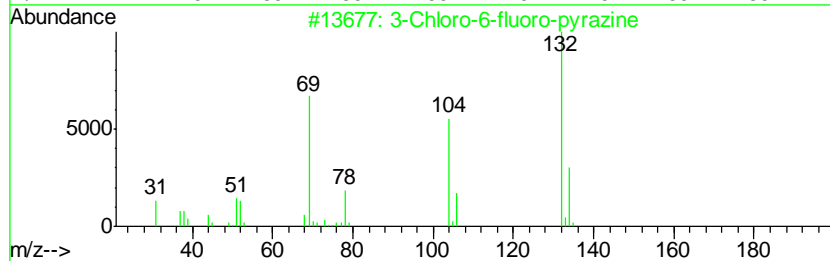
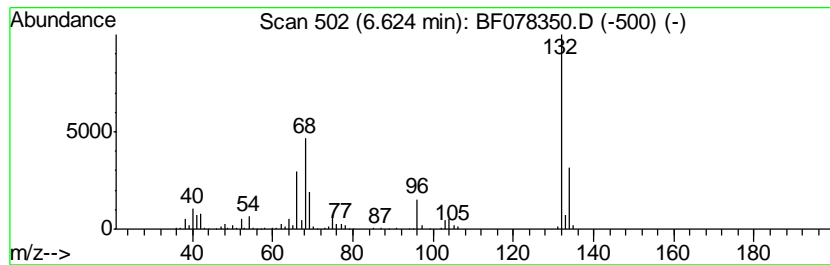
Quant Method : Z:\HPCHEM1\BNA F\METHODS\8270-BF040115.M
 Quant Title : ASP BNA STANDARDS FOR 5 POINT CALIBRATION

TIC Library : C:\DATABASE\NIST02.L
 TIC Integration Parameters: LSCINT.P

 Peak Number 6 unknown6.62 Concentration Rank 2

R.T.	EstConc	Area	Relative to ISTD	R.T.
6.62	76.43 ng	887547	1,4-Dichlorobenzene-d4	6.91

Hit#	of	Tentative ID	MW	MolForm	CAS#	Qual
1	5	3-Chloro-6-fluoro-pyrazine	132	C4H2ClFN2	1000146-10-7	27
2		5-Fluoro-2-chloropyrimidine	132	C4H2ClFN2	062802-42-0	12
3		Tranylcypromine-propionyl	189	C12H15NO	1000123-86-3	10
4		5-Aminoindole	132	C8H8N2	005192-03-0	10
5		Bicyclo[4.2.0]octa-1,3,5-triene,...	132	C10H12	028749-81-7	9



Data Path : Z:\HPCHEM1\BNA F\DATA\BF040815\
 Data File : BF078350.D
 Acq On : 8 Apr 2015 22:56
 Operator : TP/IZ
 Sample : G1794-05
 Misc :
 ALS Vial : 12 Sample Multiplier: 1

Instrument :
 BNA_F
 ClientSampleID :
 OUTFALL-2

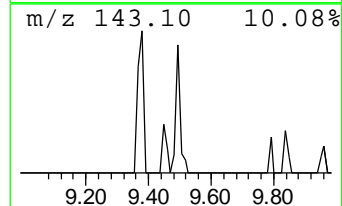
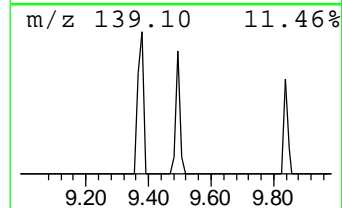
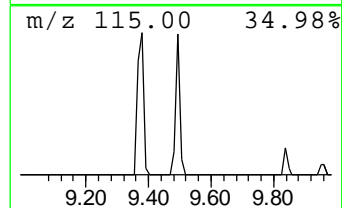
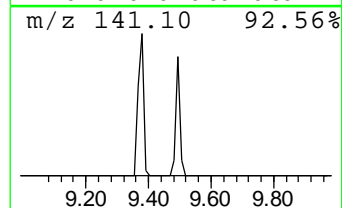
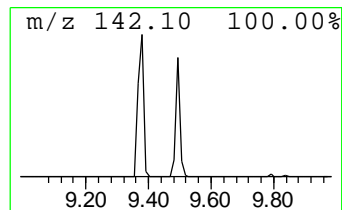
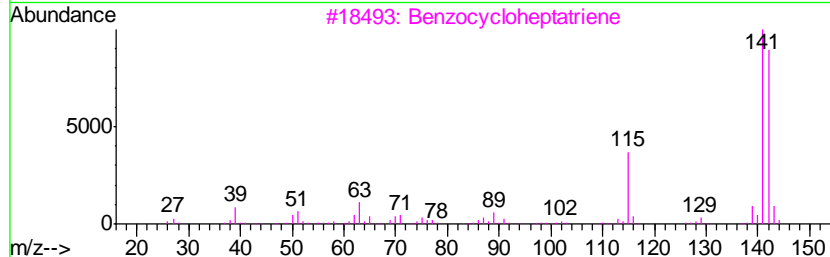
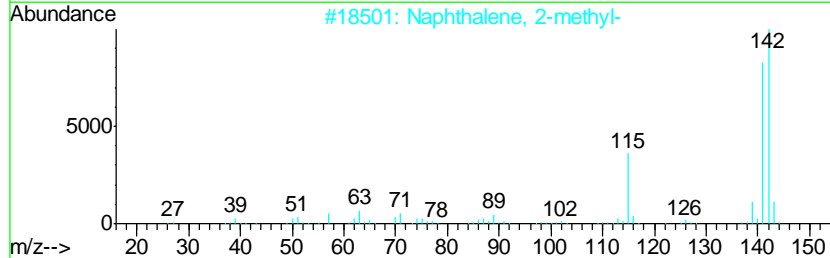
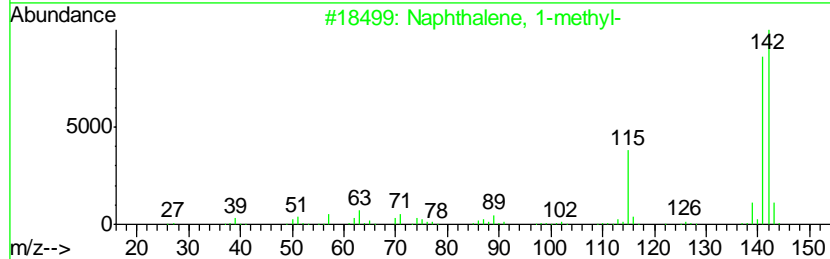
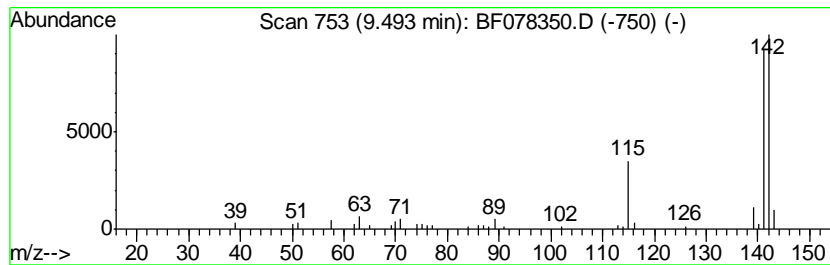
Quant Method : Z:\HPCHEM1\BNA F\METHODS\8270-BF040115.M
 Quant Title : ASP BNA STANDARDS FOR 5 POINT CALIBRATION

TIC Library : C:\DATABASE\NIST02.L
 TIC Integration Parameters: LSCINT.P

 Peak Number 8 Naphthalene, 1-methyl- Concentration Rank 14

R.T.	EstConc	Area	Relative to ISTD	R.T.
9.49	3.68 ng	73894	Naphthalene-d8	8.49

Hit#	of	Tentative ID	MW	MolForm	CAS#	Qual
1	5	Naphthalene, 1-methyl-	142	C11H10	000090-12-0	96
2		Naphthalene, 2-methyl-	142	C11H10	000091-57-6	96
3		Benzocycloheptatriene	142	C11H10	000264-09-5	91
4		1,4-Methanonaphthalene, 1,4-dihy...	142	C11H10	004453-90-1	91
5		1H-Indene, 1-ethylidene-	142	C11H10	002471-83-2	46



Data Path : Z:\HPCHEM1\BNA F\DATA\BF040815\
 Data File : BF078350.D
 Acq On : 8 Apr 2015 22:56
 Operator : TP/IZ
 Sample : G1794-05
 Misc :
 ALS Vial : 12 Sample Multiplier: 1

Instrument :
 BNA_F
 ClientSampleID :
 OUTFALL-2

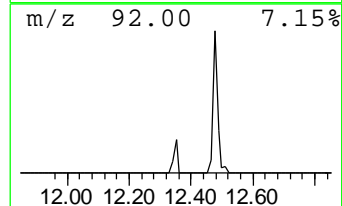
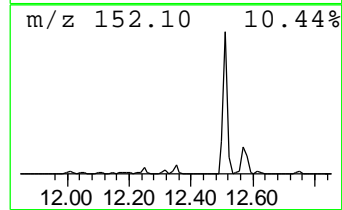
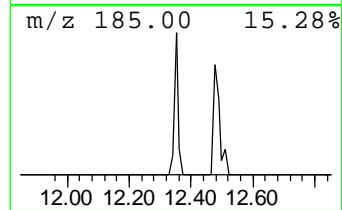
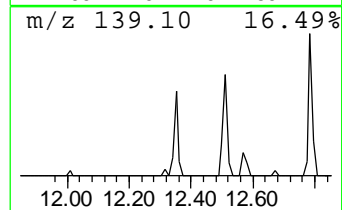
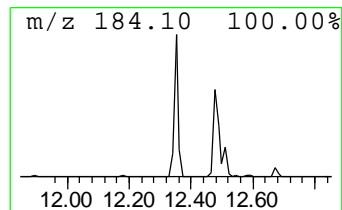
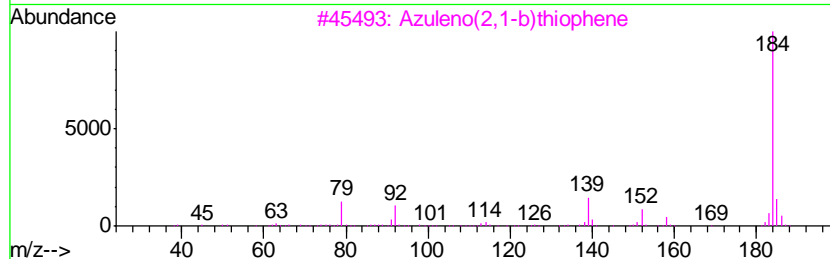
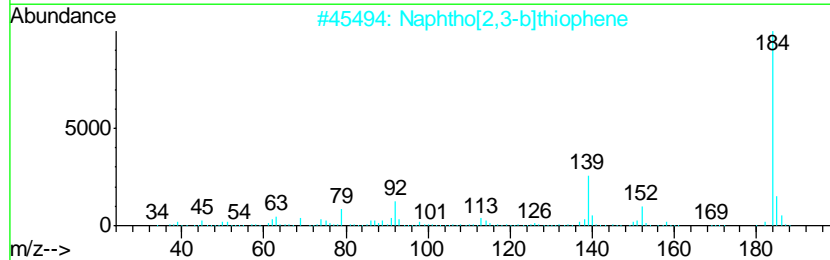
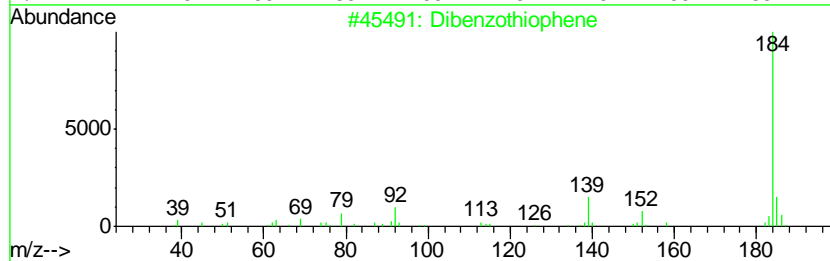
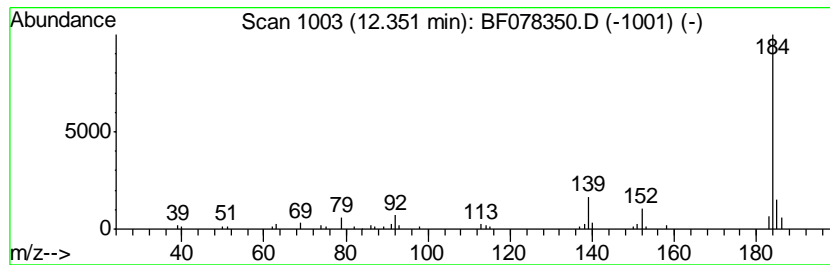
Quant Method : Z:\HPCHEM1\BNA F\METHODS\8270-BF040115.M
 Quant Title : ASP BNA STANDARDS FOR 5 POINT CALIBRATION

TIC Library : C:\DATABASE\NIST02.L
 TIC Integration Parameters: LSCINT.P

 Peak Number 9 Dibenzothiophene Concentration Rank 17

R.T.	EstConc	Area	Relative to ISTD	R.T.
12.35	3.19 ng	58349	Phenanthrene-d10	12.48

Hit#	of	Tentative ID	MW	MolForm	CAS#	Qual
1	5	Dibenzothiophene	184	C12H8S	000132-65-0	96
2		Naphtho[2,3-b]thiophene	184	C12H8S	000268-77-9	94
3		Azuleno(2,1-b)thiophene	184	C12H8S	000248-13-5	90
4		Naphthalene, 2-ethenyl-6-methoxy-	184	C13H12O	063444-51-9	80
5		1,1'-Biphenyl, 2-methoxy-	184	C13H12O	000086-26-0	72



Data Path : Z:\HPCHEM1\BNA F\DATA\BF040815\
 Data File : BF078350.D
 Acq On : 8 Apr 2015 22:56
 Operator : TP/IZ
 Sample : G1794-05
 Misc :
 ALS Vial : 12 Sample Multiplier: 1

Instrument :
 BNA_F
 ClientSampleID :
 OUTFALL-2

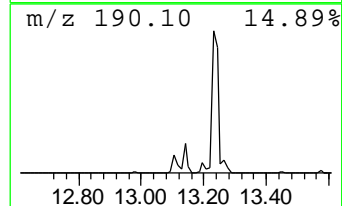
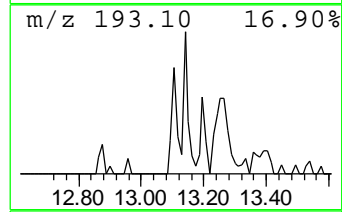
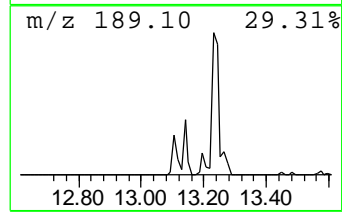
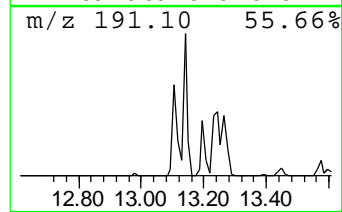
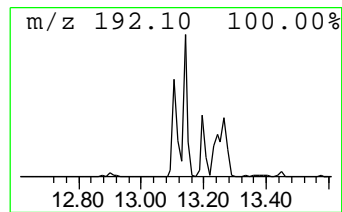
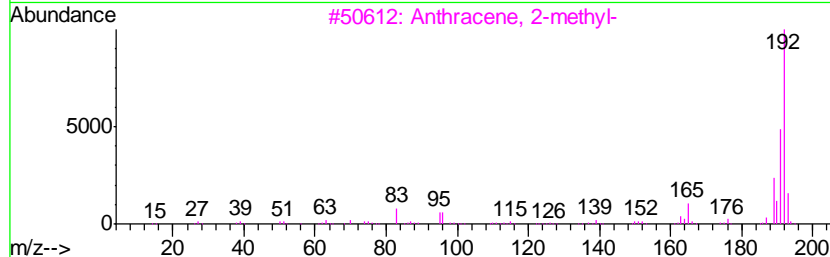
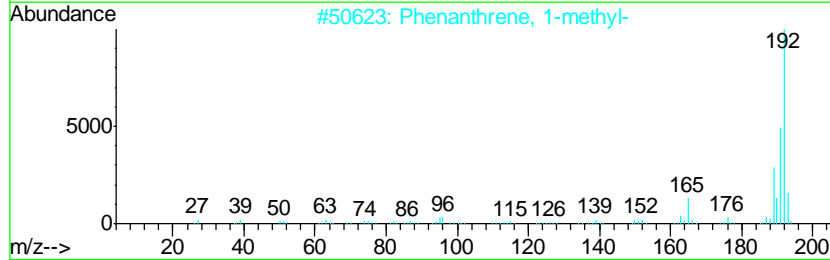
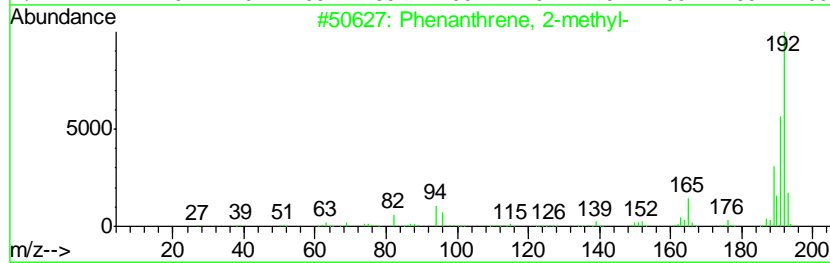
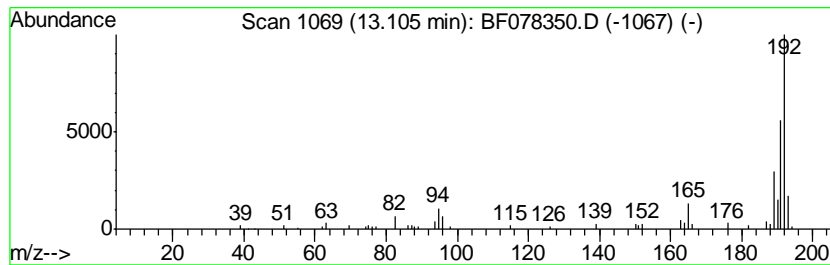
Quant Method : Z:\HPCHEM1\BNA F\METHODS\8270-BF040115.M
 Quant Title : ASP BNA STANDARDS FOR 5 POINT CALIBRATION

TIC Library : C:\DATABASE\NIST02.L
 TIC Integration Parameters: LSCINT.P

 Peak Number 10 Phenanthrene, 2-methyl- Concentration Rank 13

R.T.	EstConc	Area	Relative to ISTD	R.T.
13.11	5.01 ng	91766	Phenanthrene-d10	12.48

Hit#	of	Tentative ID	MW	MolForm	CAS#	Qual
1	5	Phenanthrene, 2-methyl-	192	C15H12	002531-84-2	97
2		Phenanthrene, 1-methyl-	192	C15H12	000832-69-9	97
3		Anthracene, 2-methyl-	192	C15H12	000613-12-7	96
4		1H-Cyclopropa[1]phenanthrene, 1a, ...	192	C15H12	000949-41-7	96
5		1H-Indene, 2-phenyl-	192	C15H12	004505-48-0	95



Data Path : Z:\HPCHEM1\BNA F\DATA\BF040815\
 Data File : BF078350.D
 Acq On : 8 Apr 2015 22:56
 Operator : TP/IZ
 Sample : G1794-05
 Misc :
 ALS Vial : 12 Sample Multiplier: 1

Instrument :
 BNA_F
 ClientSampleId :
 OUTFALL-2

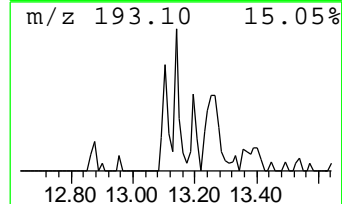
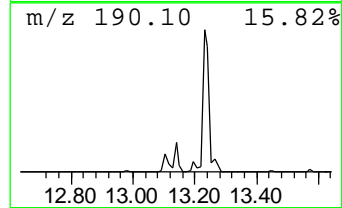
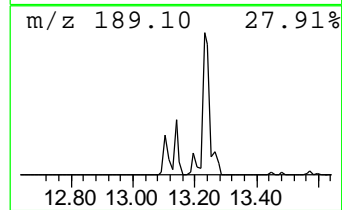
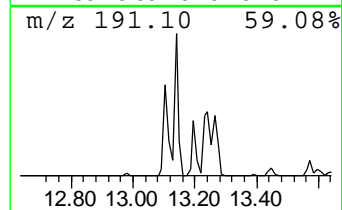
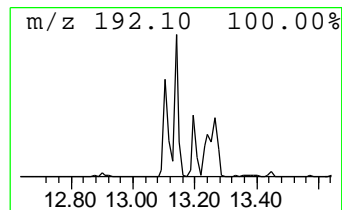
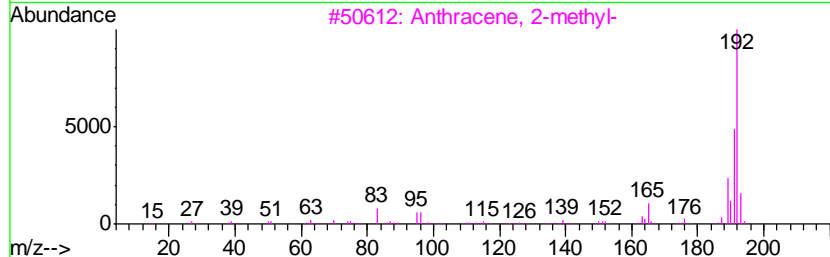
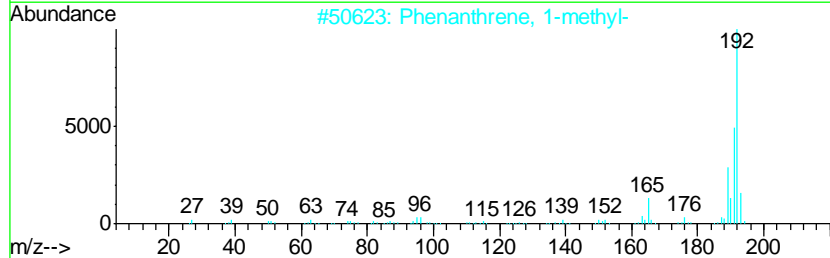
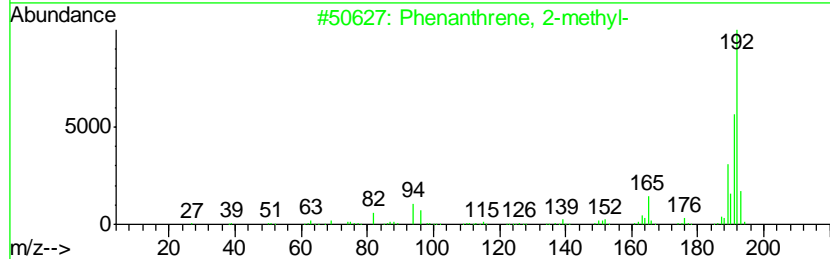
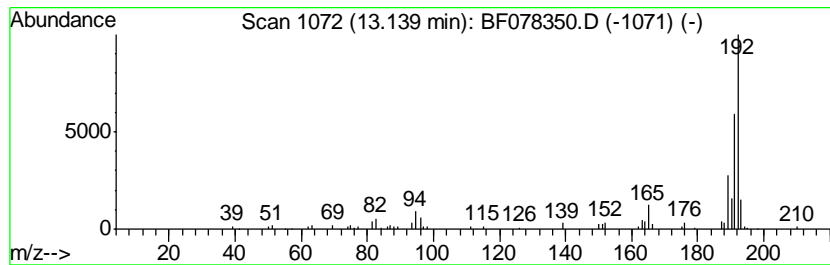
Quant Method : Z:\HPCHEM1\BNA F\METHODS\8270-BF040115.M
 Quant Title : ASP BNA STANDARDS FOR 5 POINT CALIBRATION

TIC Library : C:\DATABASE\NIST02.L
 TIC Integration Parameters: LSCINT.P

 Peak Number 11 Anthracene, 2-methyl- Concentration Rank 9

R.T.	EstConc	Area	Relative to ISTD	R.T.
13.14	6.59 ng	120627	Phenanthrene-d10	12.48

Hit#	of	Tentative ID	MW	MolForm	CAS#	Qual
1	5	Phenanthrene, 2-methyl-	192	C15H12	002531-84-2	98
2		Phenanthrene, 1-methyl-	192	C15H12	000832-69-9	97
3		Anthracene, 2-methyl-	192	C15H12	000613-12-7	96
4		Anthracene, 1-methyl-	192	C15H12	000610-48-0	95
5		Anthracene, 9-methyl-	192	C15H12	000779-02-2	94



Data Path : Z:\HPCHEM1\BNA F\DATA\BF040815\
 Data File : BF078350.D
 Acq On : 8 Apr 2015 22:56
 Operator : TP/IZ
 Sample : G1794-05
 Misc :
 ALS Vial : 12 Sample Multiplier: 1

Instrument :
 BNA_F
 ClientSampled :
 OUTFALL-2

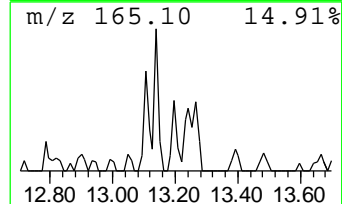
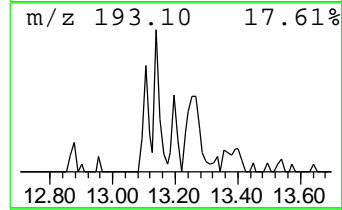
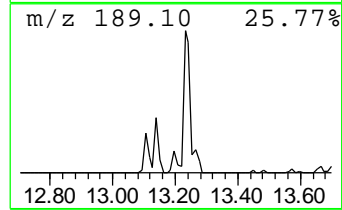
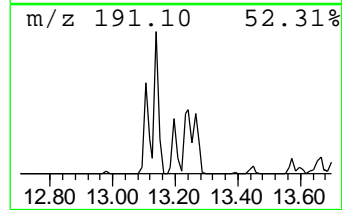
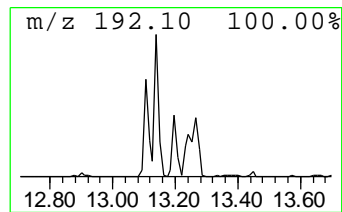
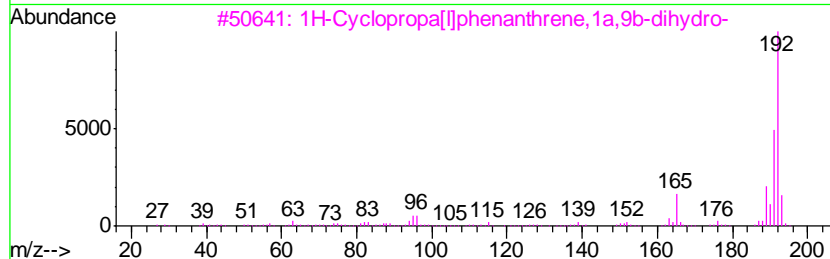
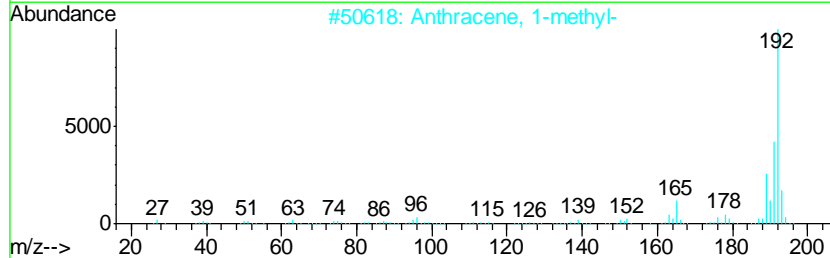
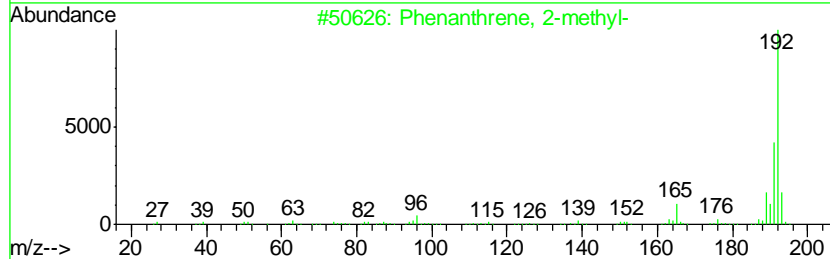
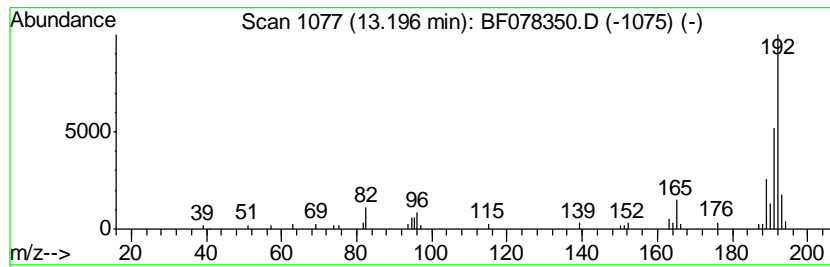
Quant Method : Z:\HPCHEM1\BNA F\METHODS\8270-BF040115.M
 Quant Title : ASP BNA STANDARDS FOR 5 POINT CALIBRATION

TIC Library : C:\DATABASE\NIST02.L
 TIC Integration Parameters: LSCINT.P

 Peak Number 12 Anthracene, 1-methyl- Concentration Rank 16

R.T.	EstConc	Area	Relative to ISTD	R.T.
13.20	3.26 ng	59631	Phenanthrene-d10	12.48

Hit#	of	Tentative ID	MW	MolForm	CAS#	Qual
1	5	Phenanthrene, 2-methyl-	192	C15H12	002531-84-2	96
2		Anthracene, 1-methyl-	192	C15H12	000610-48-0	96
3		1H-Cyclopropa[1]phenanthrene,1a,...	192	C15H12	000949-41-7	96
4		Phenanthrene, 1-methyl-	192	C15H12	000832-69-9	96
5		Anthracene, 2-methyl-	192	C15H12	000613-12-7	94



Data Path : Z:\HPCHEM1\BNA F\DATA\BF040815\
 Data File : BF078350.D
 Acq On : 8 Apr 2015 22:56
 Operator : TP/IZ
 Sample : G1794-05
 Misc :
 ALS Vial : 12 Sample Multiplier: 1

Instrument :
 BNA_F
 ClientSampled :
 OUTFALL-2

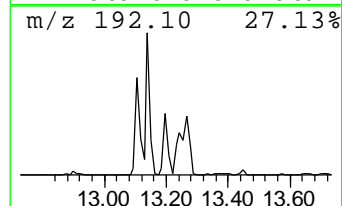
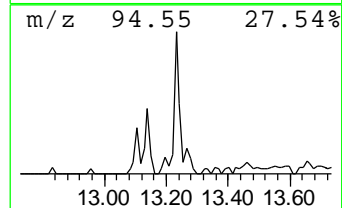
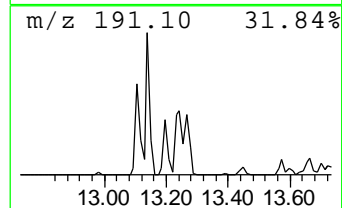
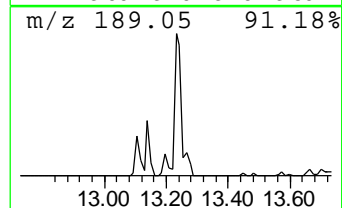
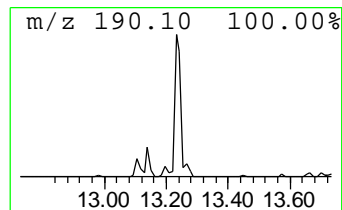
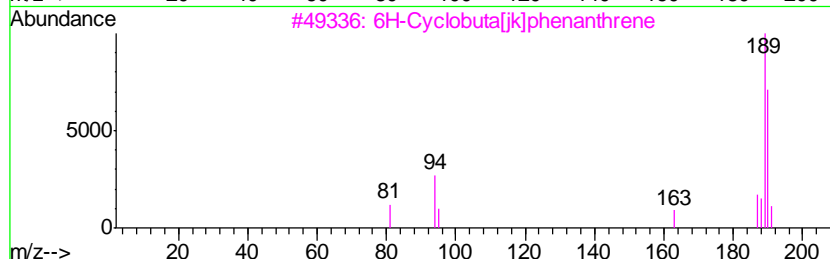
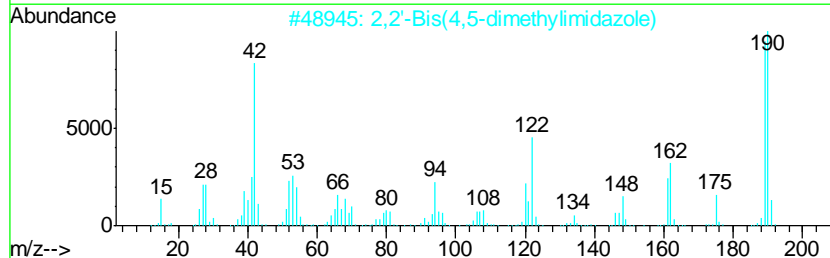
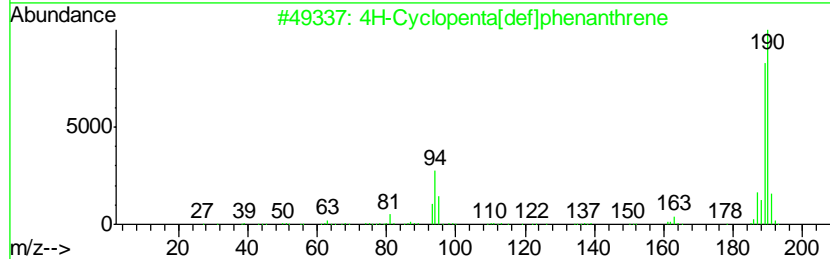
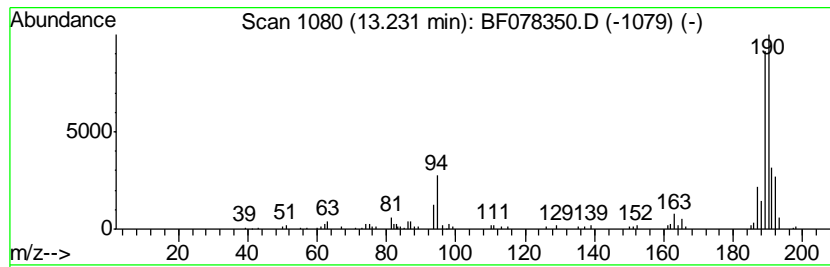
Quant Method : Z:\HPCHEM1\BNA F\METHODS\8270-BF040115.M
 Quant Title : ASP BNA STANDARDS FOR 5 POINT CALIBRATION

TIC Library : C:\DATABASE\NIST02.L
 TIC Integration Parameters: LSCINT.P

 Peak Number 13 4H-Cyclopenta[def]phenanthrene Concentration Rank 6

R.T.	EstConc	Area	Relative to ISTD	R.T.
13.23	10.88 ng	199266	Phenanthrene-d10	12.48

Hit#	of	Tentative ID	MW	MolForm	CAS#	Qual
1	5	4H-Cyclopenta[def]phenanthrene	190	C15H10	000203-64-5	94
2		2,2'-Bis(4,5-dimethylimidazole)	190	C10H14N4	069286-06-2	45
3		6H-Cyclobuta[ik]phenanthrene	190	C15H10	083469-43-6	33
4		1,4-Naphthalenedione, 2,5-dihydr...	190	C10H6O4	004923-55-1	25
5		Pyrimidine, 2-chloro-5-phenyl-	190	C10H7ClN2	022536-62-5	17



Data Path : Z:\HPCHEM1\BNA F\DATA\BF040815\
 Data File : BF078350.D
 Acq On : 8 Apr 2015 22:56
 Operator : TP/IZ
 Sample : G1794-05
 Misc :
 ALS Vial : 12 Sample Multiplier: 1

Instrument :
 BNA_F
 ClientSampleId :
 OUTFALL-2

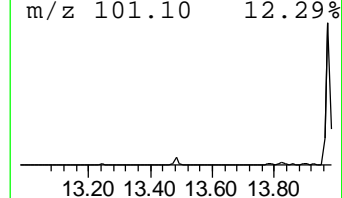
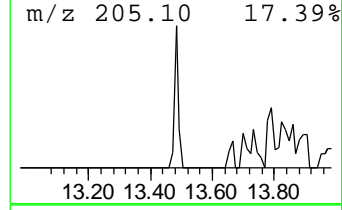
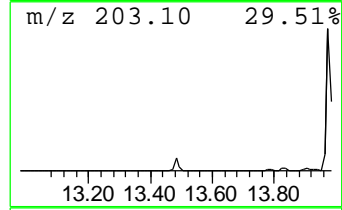
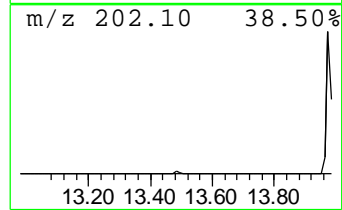
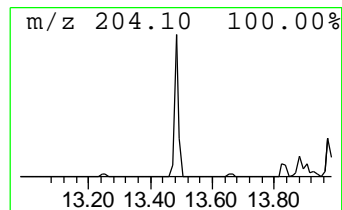
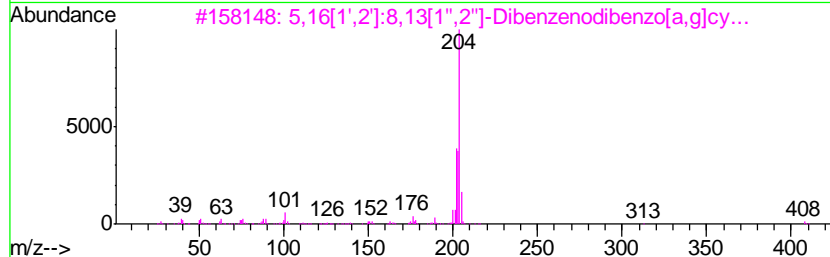
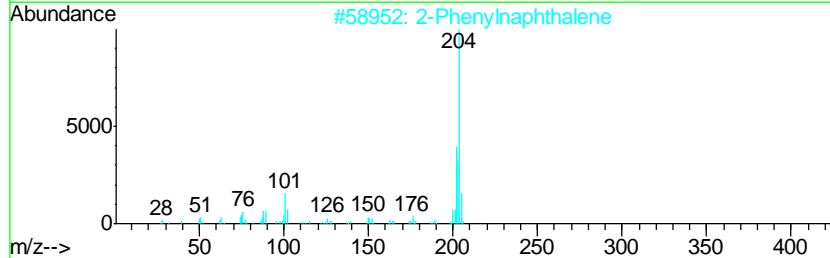
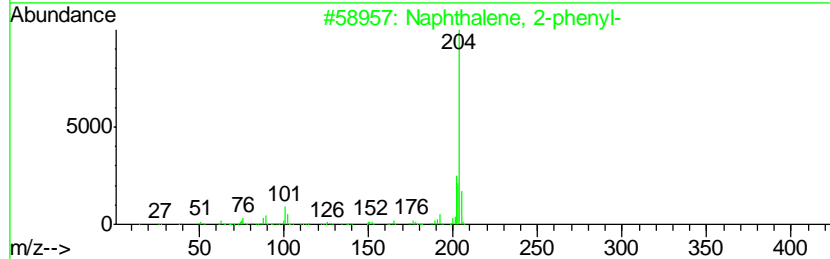
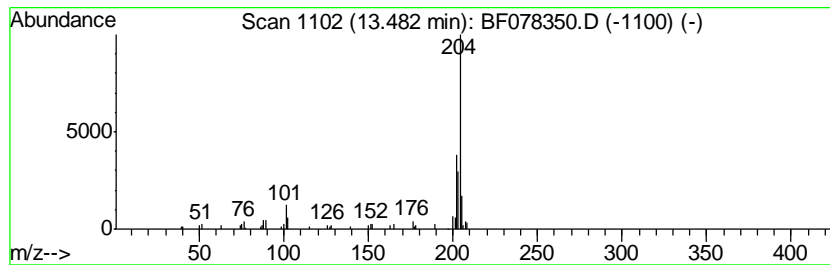
Quant Method : Z:\HPCHEM1\BNA F\METHODS\8270-BF040115.M
 Quant Title : ASP BNA STANDARDS FOR 5 POINT CALIBRATION

TIC Library : C:\DATABASE\NIST02.L
 TIC Integration Parameters: LSCINT.P

 Peak Number 14 Naphthalene, 2-phenyl- Concentration Rank 11

R.T.	EstConc	Area	Relative to ISTD	R.T.
13.48	5.99 ng	109690	Phenanthrene-d10	12.48

Hit#	of	Tentative ID	MW	MolForm	CAS#	Qual
1	5	Naphthalene, 2-phenyl-	204	C16H12	000612-94-2	96
2		2-Phenylnaphthalene	204	C16H12	035465-71-5	93
3		5,16[1',2']: ⁸ ,13[1'',2'']-Dibenz...	408	C32H24	005672-97-9	86
4		Tricyclo[8.2.2.2(4,7)]hexadeca-2...	204	C16H12	006572-60-7	70
5		Naphthalene, 1-phenyl-	204	C16H12	000605-02-7	70



Data Path : Z:\HPCHEM1\BNA F\DATA\BF040815\
 Data File : BF078350.D
 Acq On : 8 Apr 2015 22:56
 Operator : TP/IZ
 Sample : G1794-05
 Misc :
 ALS Vial : 12 Sample Multiplier: 1

Instrument :
 BNA_F
 ClientSampleId :
 OUTFALL-2

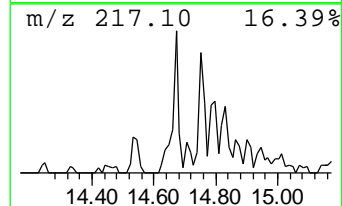
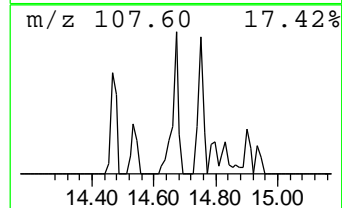
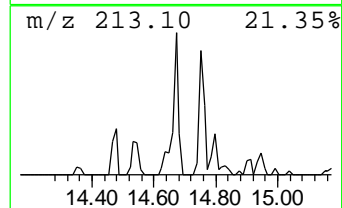
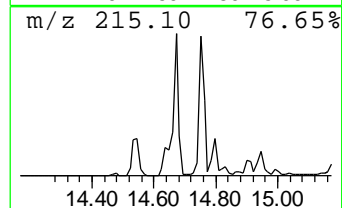
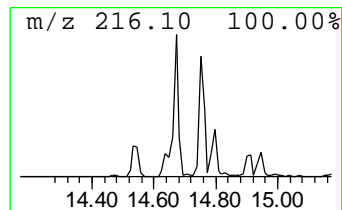
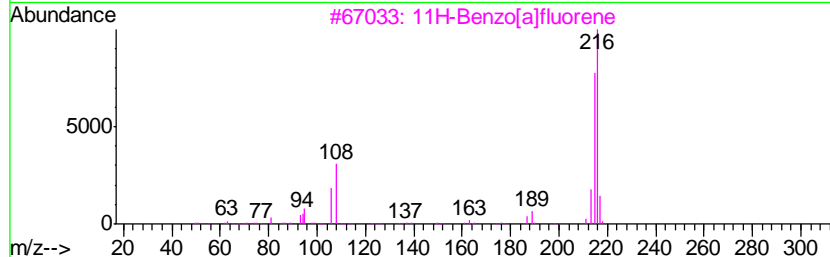
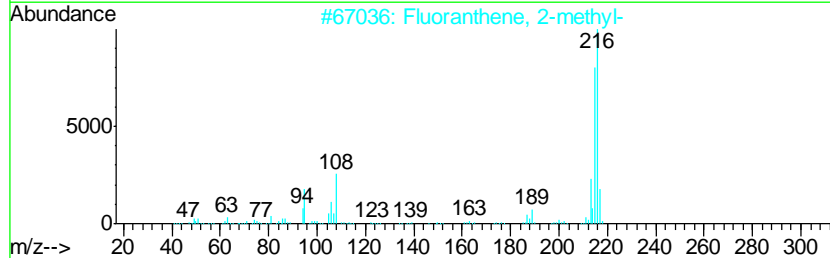
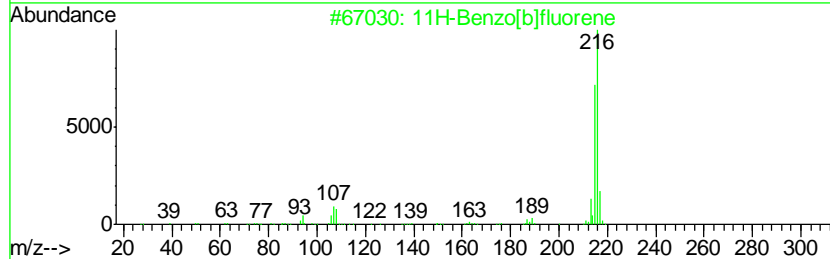
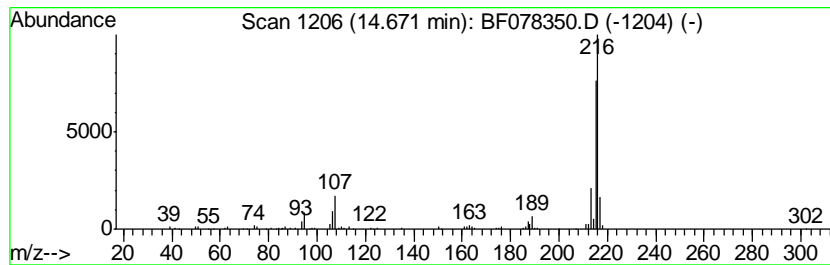
Quant Method : Z:\HPCHEM1\BNA F\METHODS\8270-BF040115.M
 Quant Title : ASP BNA STANDARDS FOR 5 POINT CALIBRATION

TIC Library : C:\DATABASE\NIST02.L
 TIC Integration Parameters: LSCINT.P

 Peak Number 15 11H-Benzo[b]fluorene Concentration Rank 15

R.T.	EstConc	Area	Relative to ISTD	R.T.
14.67	3.29 ng	180060	Chrysene-d12	15.75

Hit#	of	Tentative ID	MW	MolForm	CAS#	Qual
1	5	11H-Benzo[b]fluorene	216	C17H12	000243-17-4	95
2		Fluoranthene, 2-methyl-	216	C17H12	033543-31-6	95
3		11H-Benzo[a]fluorene	216	C17H12	000238-84-6	91
4		Pyrene, 1-methyl-	216	C17H12	002381-21-7	90
5		Pyrene, 2-methyl-	216	C17H12	003442-78-2	80



Data Path : Z:\HPCHEM1\BNA F\DATA\BF040815\
 Data File : BF078350.D
 Acq On : 8 Apr 2015 22:56
 Operator : TP/IZ
 Sample : G1794-05
 Misc :
 ALS Vial : 12 Sample Multiplier: 1

Instrument :
 BNA_F
 ClientSampleID :
 OUTFALL-2

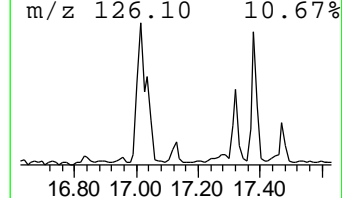
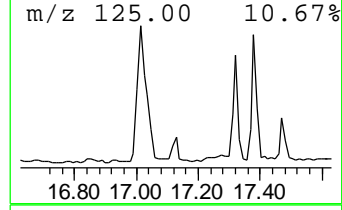
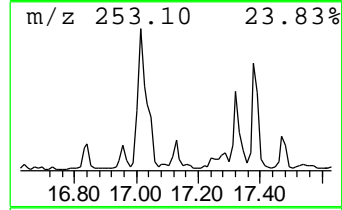
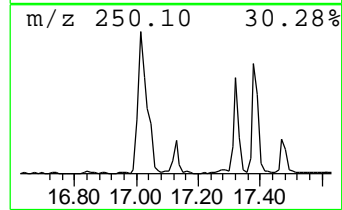
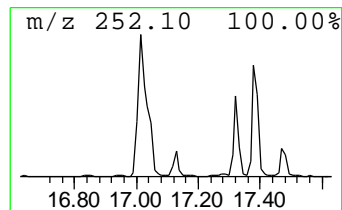
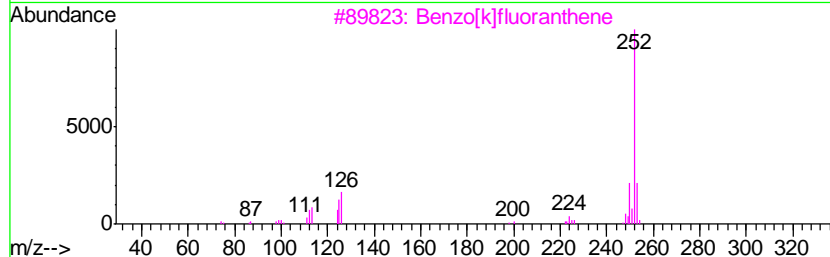
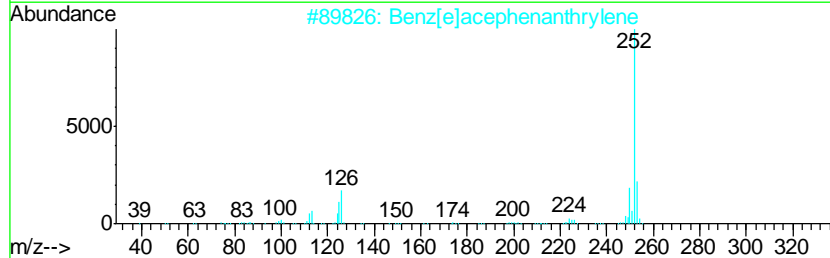
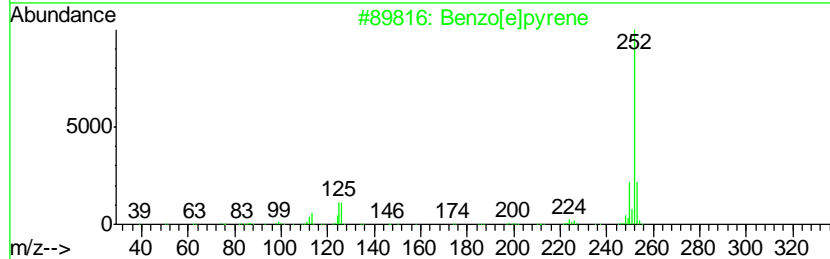
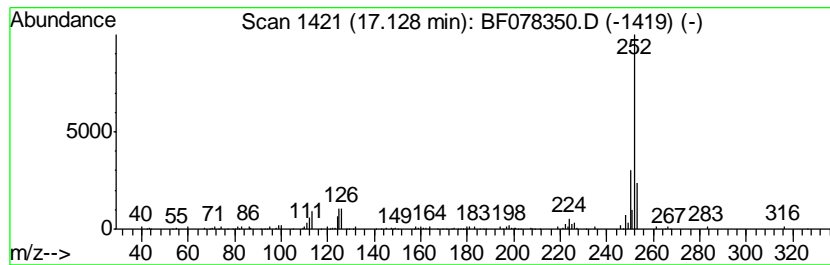
Quant Method : Z:\HPCHEM1\BNA F\METHODS\8270-BF040115.M
 Quant Title : ASP BNA STANDARDS FOR 5 POINT CALIBRATION

TIC Library : C:\DATABASE\NIST02.L
 TIC Integration Parameters: LSCINT.P

 Peak Number 16 Benzo[e]pyrene Concentration Rank 18

R.T.	EstConc	Area	Relative to ISTD	R.T.
17.13	3.11 ng	73984	Perylene-d12	17.45

Hit#	of	Tentative ID	MW	MolForm	CAS#	Qual
1	5	Benzo[e]pyrene	252	C20H12	000192-97-2	93
2		Benz[e]acephenanthrylene	252	C20H12	000205-99-2	93
3		Benzo[k]fluoranthene	252	C20H12	000207-08-9	93
4		Benzo[a]pyrene	252	C20H12	000050-32-8	76
5		Perylene	252	C20H12	000198-55-0	68



Data Path : Z:\HPCHEM1\BNA F\DATA\BF040815\
 Data File : BF078350.D
 Acq On : 8 Apr 2015 22:56
 Operator : TP/IZ
 Sample : G1794-05
 Misc :
 ALS Vial : 12 Sample Multiplier: 1

Instrument :
 BNA_F
 ClientSampleID :
 OUTFALL-2

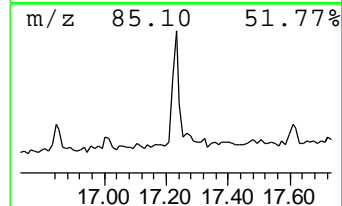
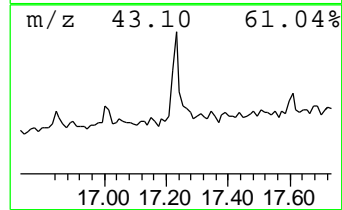
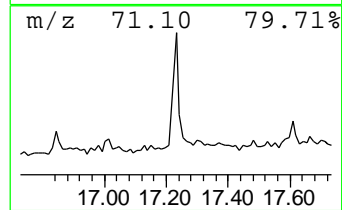
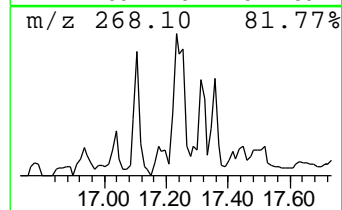
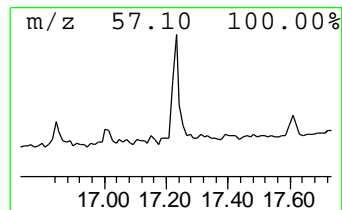
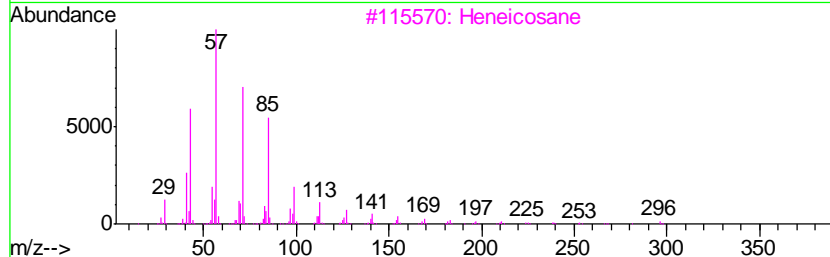
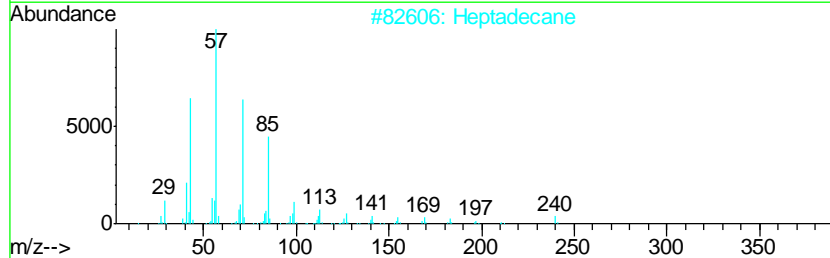
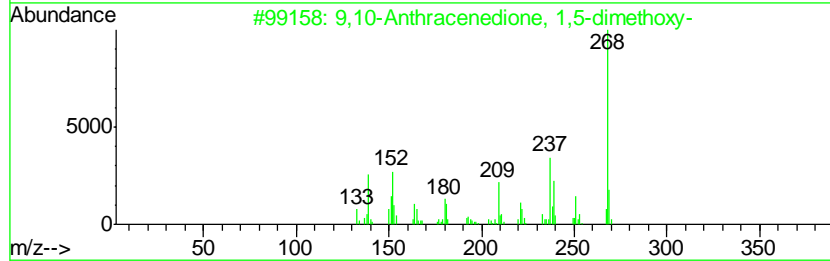
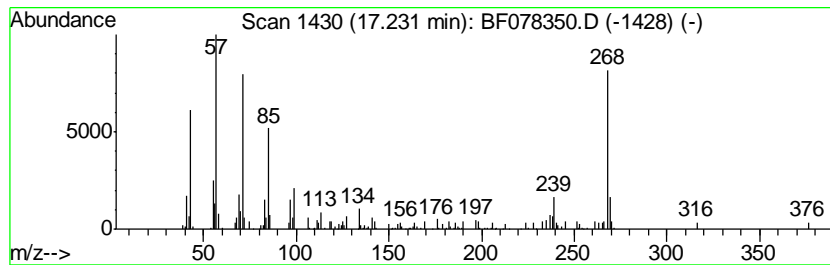
Quant Method : Z:\HPCHEM1\BNA F\METHODS\8270-BF040115.M
 Quant Title : ASP BNA STANDARDS FOR 5 POINT CALIBRATION

TIC Library : C:\DATABASE\NIST02.L
 TIC Integration Parameters: LSCINT.P

 Peak Number 17 9,10-Anthracenedione, 1,5-d... Concentration Rank 12

R.T.	EstConc	Area	Relative to ISTD	R.T.
17.23	5.57 ng	132534	Perylene-d12	17.45

Hit#	of	Tentative ID	MW	MolForm	CAS#	Qual
1	5	9,10-Anthracenedione, 1,5-dimeth...	268	C16H12O4	006448-90-4	64
2		Heptadecane	240	C17H36	000629-78-7	60
3		Heneicosane	296	C21H44	000629-94-7	49
4		Octadecane, 1-iodo-	380	C18H37I	000629-93-6	46
5		Tetradecane	198	C14H30	000629-59-4	46



Data Path : Z:\HPCHEM1\BNA F\DATA\BF040815\
 Data File : BF078350.D
 Acq On : 8 Apr 2015 22:56
 Operator : TP/IZ
 Sample : G1794-05
 Misc :
 ALS Vial : 12 Sample Multiplier: 1

Instrument :
 BNA_F
 ClientSampleID :
 OUTFALL-2

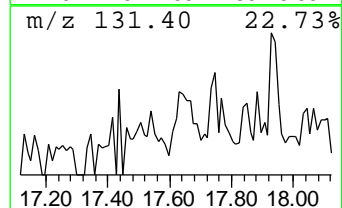
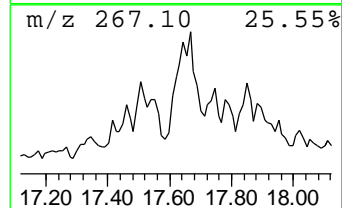
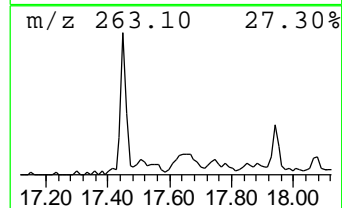
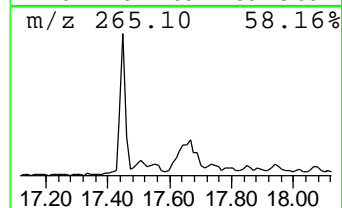
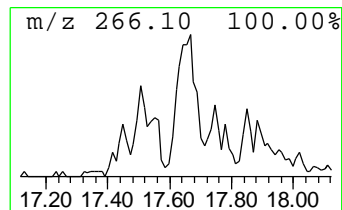
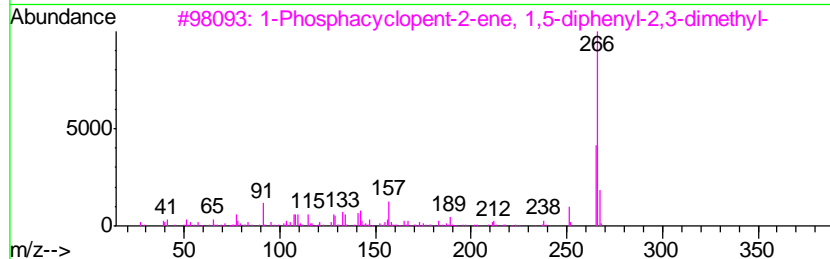
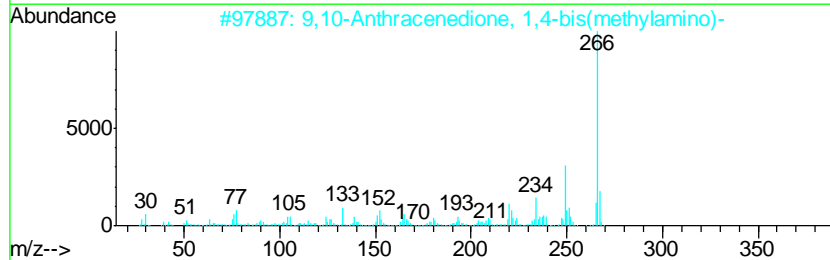
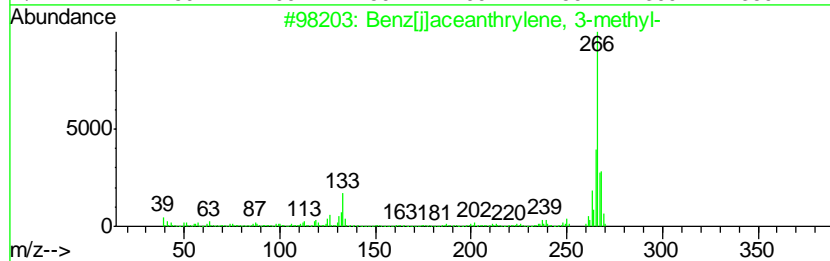
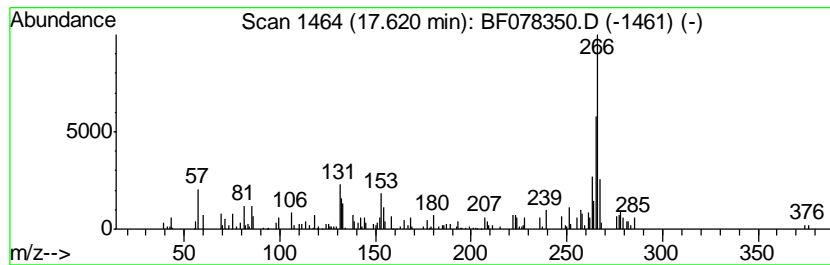
Quant Method : Z:\HPCHEM1\BNA F\METHODS\8270-BF040115.M
 Quant Title : ASP BNA STANDARDS FOR 5 POINT CALIBRATION

TIC Library : C:\DATABASE\NIST02.L
 TIC Integration Parameters: LSCINT.P

 Peak Number 19 Benz[j]aceanthrylene, 3-met... Concentration Rank 20

R.T.	EstConc	Area	Relative to ISTD	R.T.
17.62	3.02 ng	71703	Perylene-d12	17.45

Hit#	of	Tentative ID	MW	MolForm	CAS#	Qual
1	5	Benz[j]aceanthrylene, 3-methyl-	266	C21H14	003343-10-0	62
2		9,10-Anthracenedione, 1,4-bis(me...	266	C16H14N2O2	002475-44-7	55
3		1-Phosphacyclopent-2-ene, 1,5-di...	266	C18H19P	1000162-78-2	50
4		11H-Indeno[2,1-a]phenanthrene	266	C21H14	000220-97-3	50
5		Thiazole, 4-phenyl-2-(4-tolylami...	266	C16H14N2S	016098-04-7	50



Data Path : Z:\HPCHEM1\BNA F\DATA\BF040815\
 Data File : BF078350.D
 Acq On : 8 Apr 2015 22:56
 Operator : TP/IZ
 Sample : G1794-05
 Misc :
 ALS Vial : 12 Sample Multiplier: 1

Instrument :
 BNA_F
 ClientSampleID :
 OUTFALL-2

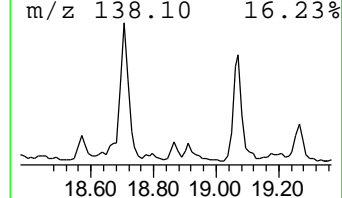
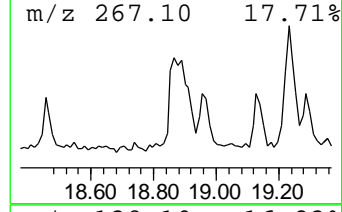
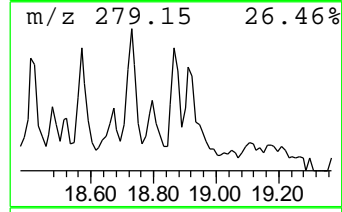
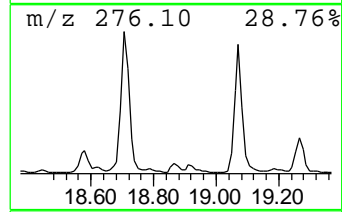
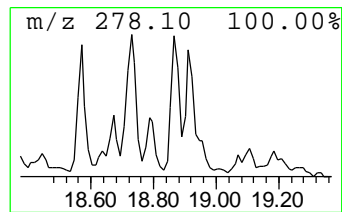
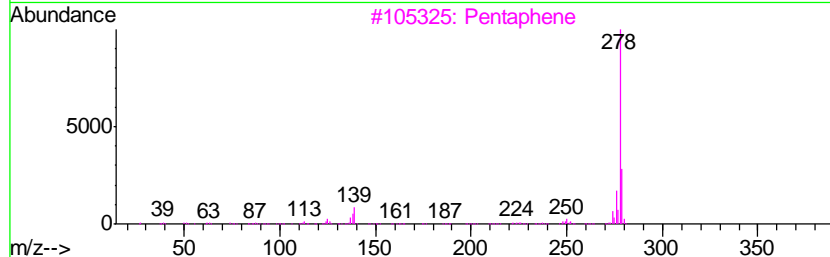
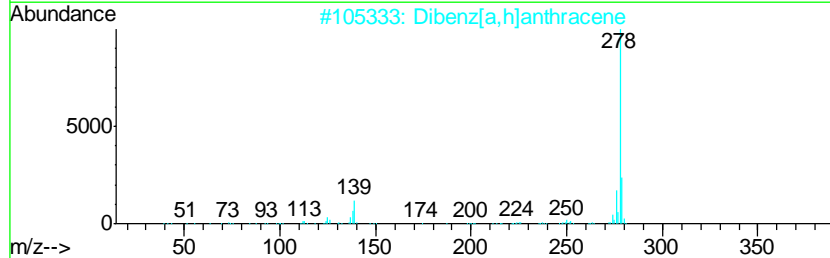
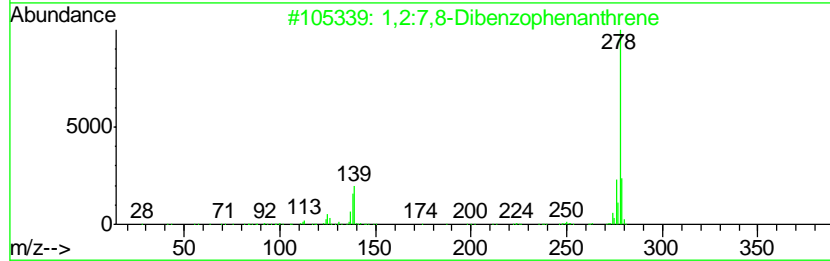
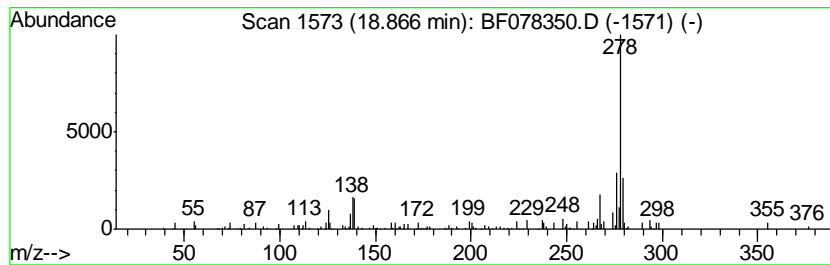
Quant Method : Z:\HPCHEM1\BNA F\METHODS\8270-BF040115.M
 Quant Title : ASP BNA STANDARDS FOR 5 POINT CALIBRATION

TIC Library : C:\DATABASE\NIST02.L
 TIC Integration Parameters: LSCINT.P

 Peak Number 20 1,2:7,8-Dibenzophenanthrene Concentration Rank 19

R.T.	EstConc	Area	Relative to ISTD	R.T.
18.87	3.06 ng	72799	Perylene-d12	17.45

Hit#	of	Tentative ID	MW	MolForm	CAS#	Qual
1	5	1,2:7,8-Dibenzophenanthrene	278	C22H14	000213-46-7	96
2		Dibenz[a,h]anthracene	278	C22H14	000053-70-3	86
3		Pentaphene	278	C22H14	000222-93-5	83
4		Benzo[b]triphenylene	278	C22H14	000215-58-7	83
5		Benzo[a]naphthacene	278	C22H14	000226-88-0	62



Data Path : Z:\HPCHEM1\BNA_F\DATA\BF040815\
 Data File : BF078350.D
 Acq On : 8 Apr 2015 22:56
 Operator : TP/IZ
 Sample : G1794-05
 Misc :
 ALS Vial : 12 Sample Multiplier: 1

Instrument :
 BNA_F
 ClientSampleId :
 OUTFALL-2

Quant Method : Z:\HPCHEM1\BNA_F\METHODS\8270-BF040115.M
 Quant Title : ASP BNA STANDARDS FOR 5 POINT CALIBRATION

TIC Library : C:\DATABASE\NIST02.L
 TIC Integration Parameters: LSCINT.P

TIC Top Hit name	RT	EstConc	Units	Response	--Internal Standard--			
					#	RT	Resp	Conc
unknown1.09	1.09	120.2	ng	1396360	1	6.91	232264	20.0
Butane, 2-methoxy...	1.34	10.9	ng	126507	1	6.91	232264	20.0
2-Pentanone, 4-hy...	4.61	8.5	ng	98776	1	6.91	232264	20.0
unknown6.62	6.62	76.4	ng	887547	1	6.91	232264	20.0
Naphthalene, 1-me...	9.49	3.7	ng	73894	2	8.49	401606	20.0
Dibenzothiophene	12.35	3.2	ng	58349	4	12.48	366212	20.0
Phenanthrene, 2-m...	13.11	5.0	ng	91766	4	12.48	366212	20.0
Anthracene, 2-met...	13.14	6.6	ng	120627	4	12.48	366212	20.0
Anthracene, 1-met...	13.20	3.3	ng	59631	4	12.48	366212	20.0
4H-Cyclopenta[def...	13.23	10.9	ng	199266	4	12.48	366212	20.0
Naphthalene, 2-ph...	13.48	6.0	ng	109690	4	12.48	366212	20.0
11H-Benzo[b]fluorene	14.67	3.3	ng	180060	5	15.75	1093180	20.0
Benzo[e]pyrene	17.13	3.1	ng	73984	6	17.45	475554	20.0
9,10-Anthracenedi...	17.23	5.6	ng	132534	6	17.45	475554	20.0
Benz[j]aceanthryl...	17.62	3.0	ng	71703	6	17.45	475554	20.0
1,2:7,8-Dibenzoph...	18.87	3.1	ng	72799	6	17.45	475554	20.0