

Data Path : Z:\HPCHEM1\BNA F\DATA\BF040915\
 Data File : BF078392.D
 Acq On : 10 Apr 2015 9:14
 Operator : TP/IZ
 Sample : G1793-08DL 5X
 Misc :
 ALS Vial : 33 Sample Multiplier: 1

Instrument :
 BNA_F
 ClientSampleId :
 SB-6DDL

Manual Integrations
 APPROVED

apatel
 4/10/2015 5:13:46 PM

Quant Time: Apr 10 12:55:25 2015
 Quant Method : Z:\HPCHEM1\BNA F\METHODS\8270-BF040115.M
 Quant Title : ASP BNA STANDARDS FOR 5 POINT CALIBRATION
 QLast Update : Thu Apr 09 11:29:31 2015
 Response via : Initial Calibration

Internal Standards	R.T.	QIon	Response	Conc	Units	Dev(Min)	
1) 1,4-Dichlorobenzene-d4	6.89	152	38307	20.00	ng	0.00	
21) Naphthalene-d8	8.46	136	158460	20.00	ng	0.00	
38) Acenaphthene-d10	10.63	164	77831	20.00	ng	-0.01	
63) Phenanthrene-d10	12.45	188	149333	20.00	ng	-0.01	
75) Chrysene-d12	15.72	240	149304	20.00	ng	-0.02	
86) Perylene-d12	17.49	264	144259	20.00	ng	0.03	
System Monitoring Compounds							
5) 2-Fluorophenol	5.15	112	53073	22.84	ng	-0.02	
7) Phenol-d6	6.49	99	74245	25.50	ng	0.01	
23) Nitrobenzene-d5	7.58	82	36671	14.03	ng	0.00	
41) 2,4,6-Tribromophenol	11.60	330	11858	18.37	ng	-0.02	
44) 2-Fluorobiphenyl	9.81	172	82151	15.09	ng	0.00	
78) Terphenyl-d14	14.44	244	77669	11.75	ng	-0.02	
Target Compounds							
31) Naphthalene	8.49	128	254576	30.87	ng		Qvalue 100
37) 2-Methylnaphthalene	9.34	142	45303	8.09	ng		99
45) 1,1'-Biphenyl	9.93	154	21799	3.42	ng		98
51) Acenaphthene	10.66	154	41904	9.20	ng		99
57) Fluorene	11.30	166	31398	5.57	ng		99
70) Phenanthrene	12.48	178	160816	18.62	ng		100
71) Anthracene	12.55	178	47050	5.53	ng		99
74) Fluoranthene	13.94	202	74582	8.19	ng		98
77) Pyrene	14.23	202	108820	11.61	ng		99
80) Benzo(a)anthracene	15.71	228	35047	3.95	ng	#	79
82) Chrysene	15.76	228	24083	2.89	ng		97
87) Benzo(b)fluoranthene	17.04	252	26942m	3.02	ng		
89) Benzo(a)pyrene	17.43	252	28178	3.62	ng	#	82
91) Benzo(g,h,i)perylene	19.14	276	15983m	2.05	ng		

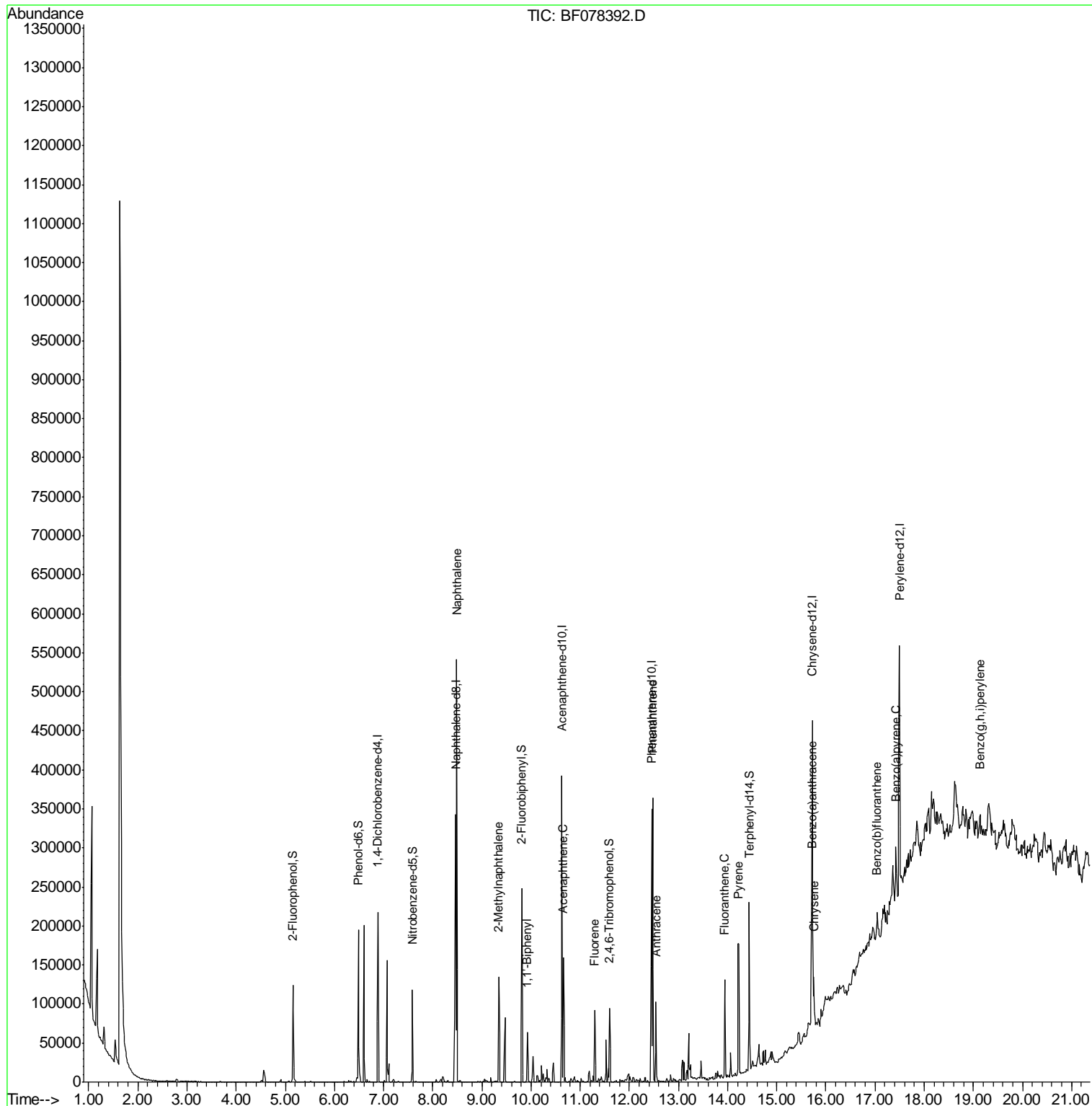
(#) = qualifier out of range (m) = manual integration (+) = signals summed

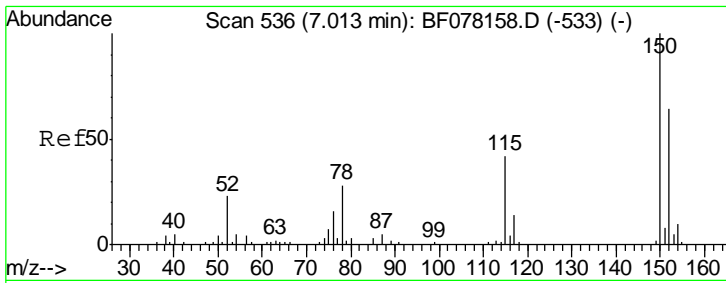
Data Path : Z:\HPCHEM1\BNA F\DATA\BF040915\
 Data File : BF078392.D
 Acq On : 10 Apr 2015 9:14
 Operator : TP/IZ
 Sample : G1793-08DL 5X
 Misc :
 ALS Vial : 33 Sample Multiplier: 1

Instrument :
 BNA_F
 ClientSampled :
 SB-6DDL

Manual Integrations
 APPROVED
 apatel
 4/10/2015 5:13:46 PM

Quant Time: Apr 10 12:55:25 2015
 Quant Method : Z:\HPCHEM1\BNA F\METHODS\8270-BF040115.M
 Quant Title : ASP BNA STANDARDS FOR 5 POINT CALIBRATION
 QLast Update : Thu Apr 09 11:29:31 2015
 Response via : Initial Calibration



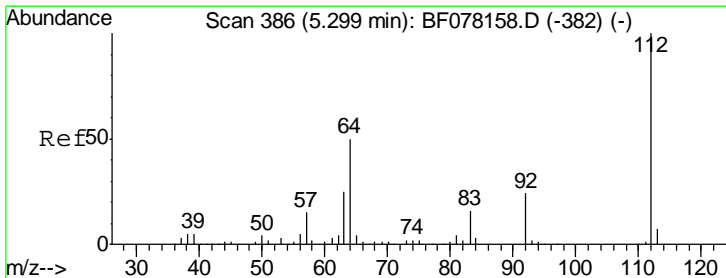
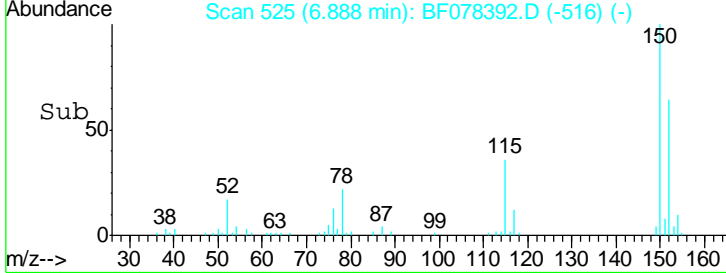
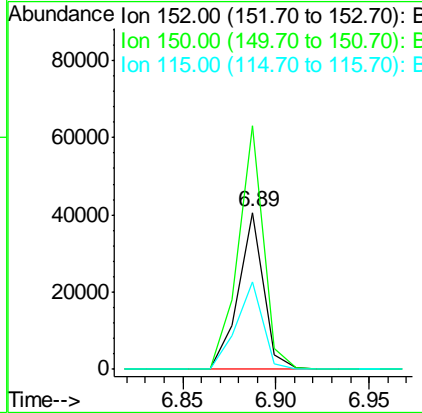
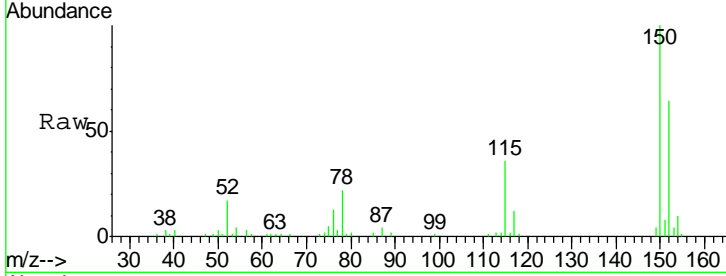


#1
 1,4-Dichlorobenzene-d4
 Concen: 20.00 ng
 RT: 6.89 min Scan# 525
 Delta R.T. 0.00 min
 Lab File: BF078392.D
 Acq: 10 Apr 2015 9:14

Instrument :
 BNA_F
ClientSampled :
 SB-6DDL

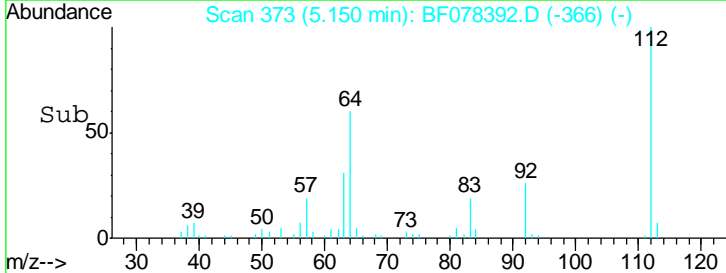
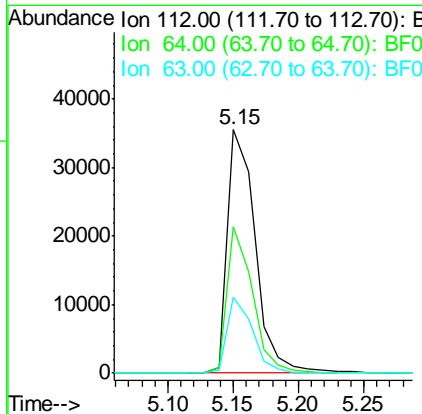
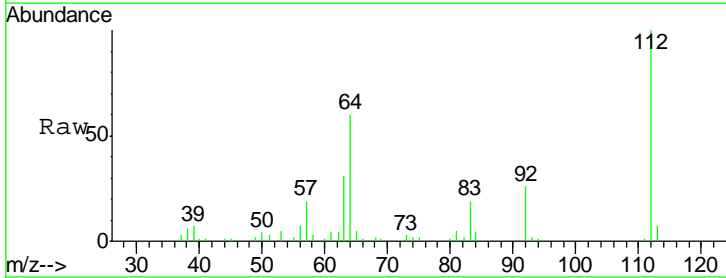
Tgt Ion	Resp	Lower	Upper
152	38307		
152	100		
150	155.4	125.9	188.9
115	55.5	52.7	79.1

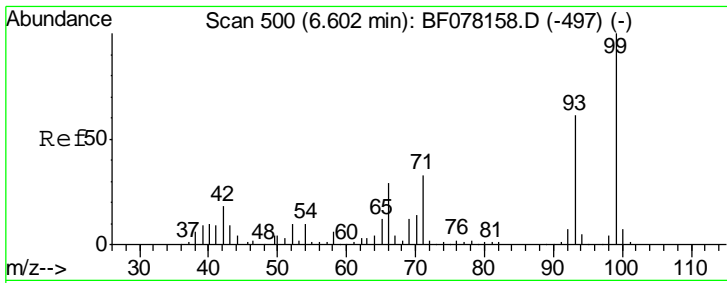
Manual Integrations
APPROVED
 apatel
 4/10/2015 5:13:46 PM



#5
 2-Fluorophenol
 Concen: 22.84 ng
 RT: 5.15 min Scan# 373
 Delta R.T. -0.02 min
 Lab File: BF078392.D
 Acq: 10 Apr 2015 9:14

Tgt Ion	Resp	Lower	Upper
112	53073		
112	100		
64	60.1	39.9	59.9#
63	31.0	20.2	30.4#



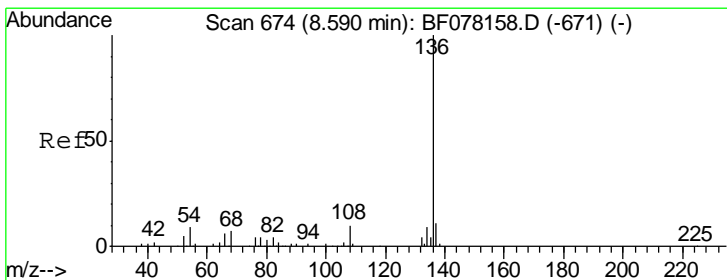
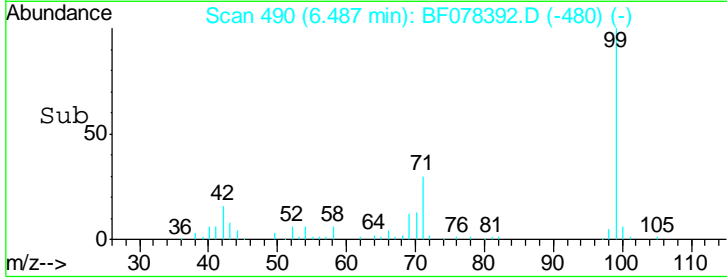
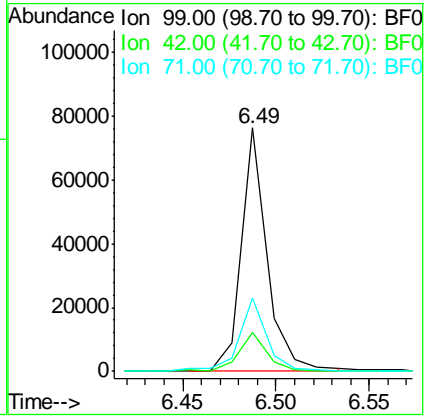
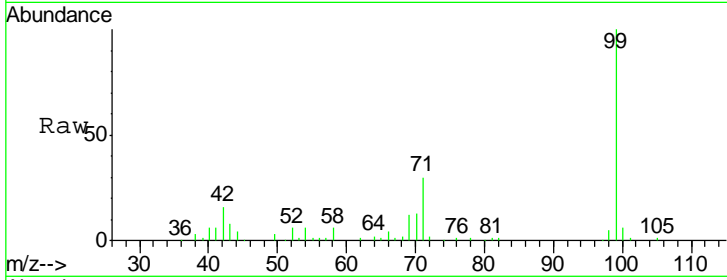


#7
 Phenol-d6
 Concen: 25.50 ng
 RT: 6.49 min Scan# 490
 Delta R.T. 0.01 min
 Lab File: BF078392.D
 Acq: 10 Apr 2015 9:14

Instrument :
 BNA_F
ClientSampled :
 SB-6DDL

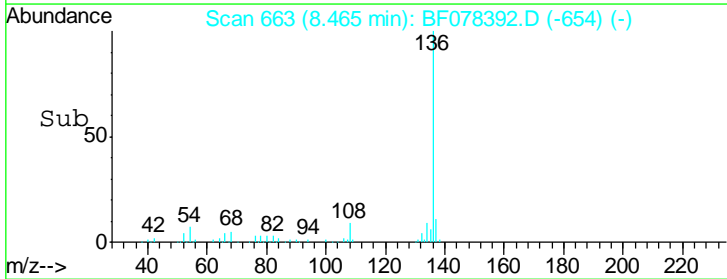
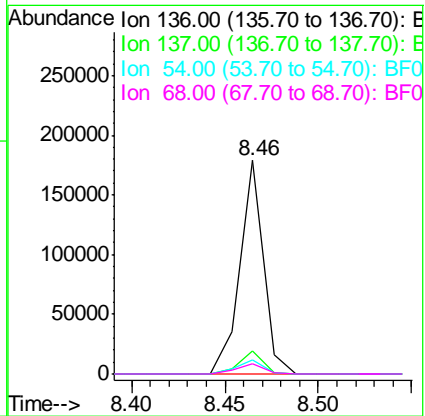
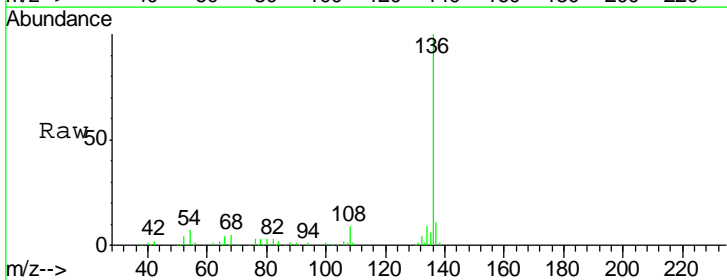
Tgt Ion	Resp	Lower	Upper
99	74245		
99	100		
42	15.9	14.8	22.2
71	30.0	26.6	39.8

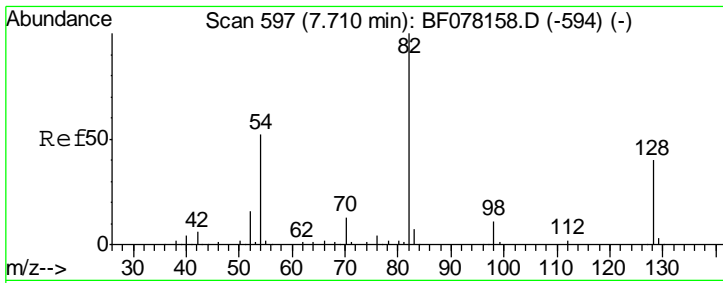
Manual Integrations
APPROVED
 apatel
 4/10/2015 5:13:46 PM



#21
 Naphthalene-d8
 Concen: 20.00 ng
 RT: 8.46 min Scan# 663
 Delta R.T. 0.00 min
 Lab File: BF078392.D
 Acq: 10 Apr 2015 9:14

Tgt Ion	Resp	Lower	Upper
136	158460		
136	100		
137	10.8	9.0	13.4
54	6.6	7.0	10.6#
68	5.0	5.4	8.2#



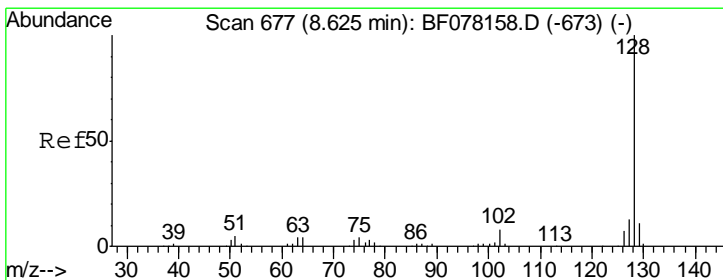
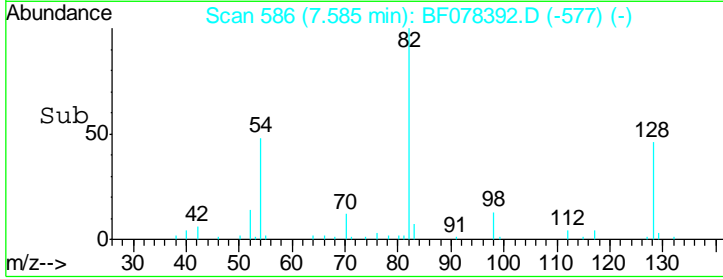
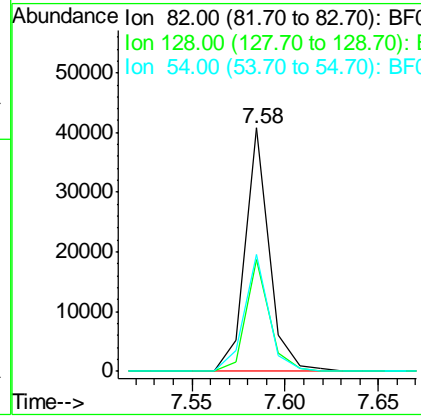
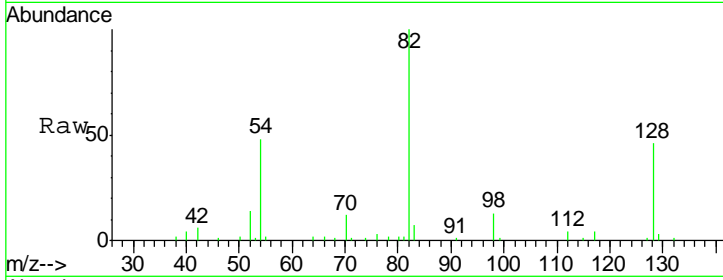


#23
 Nitrobenzene-d5
 Concen: 14.03 ng
 RT: 7.58 min Scan# 586
 Delta R.T. 0.00 min
 Lab File: BF078392.D
 Acq: 10 Apr 2015 9:14

Instrument :
 BNA_F
ClientSampled :
 SB-6DDL

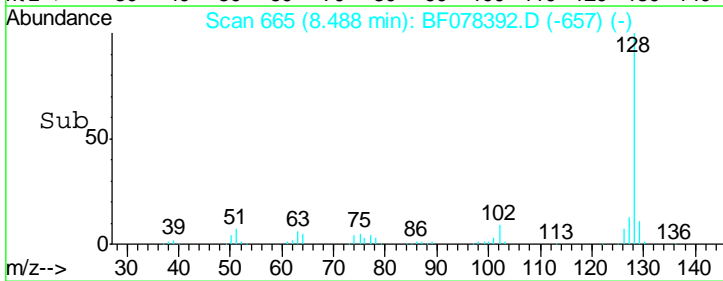
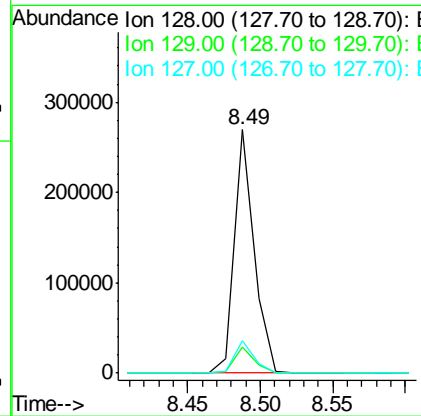
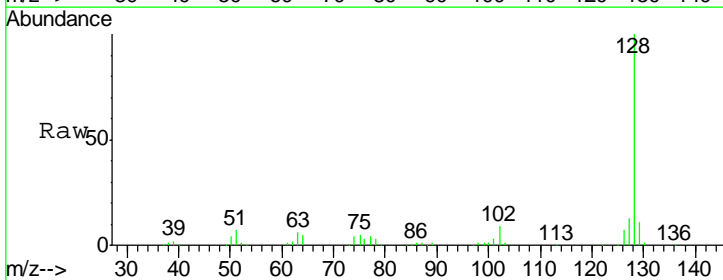
Tgt Ion	Resp	Lower	Upper
82	36671		
128	45.8	31.8	47.8
54	48.1	41.5	62.3

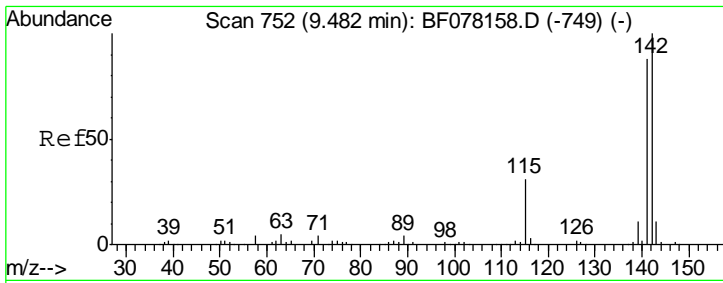
Manual Integrations
APPROVED
 apatel
 4/10/2015 5:13:46 PM



#31
 Naphthalene
 Concen: 30.87 ng
 RT: 8.49 min Scan# 665
 Delta R.T. -0.01 min
 Lab File: BF078392.D
 Acq: 10 Apr 2015 9:14

Tgt Ion	Resp	Lower	Upper
128	254576		
129	10.7	8.6	12.8
127	13.2	10.7	16.1



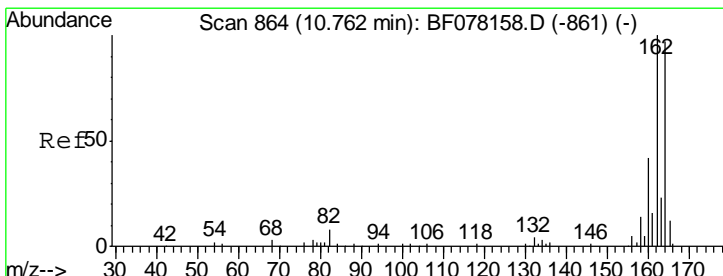
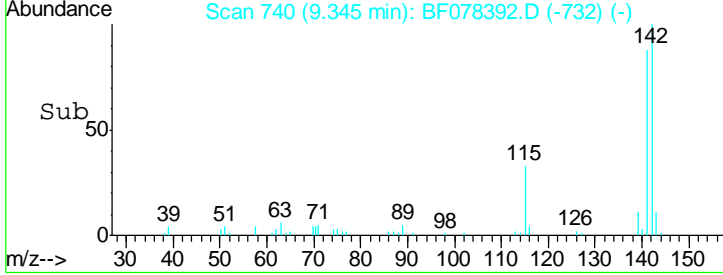
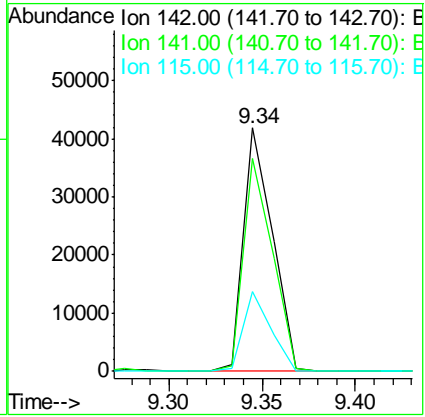
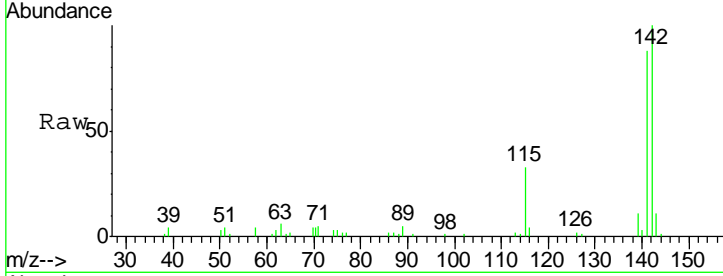


#37
 2-Methylnaphthalene
 Concen: 8.09 ng
 RT: 9.34 min Scan# 740
 Delta R.T. -0.01 min
 Lab File: BF078392.D
 Acq: 10 Apr 2015 9:14

Instrument :
 BNA_F
 ClientSampled :
 SB-6DDL

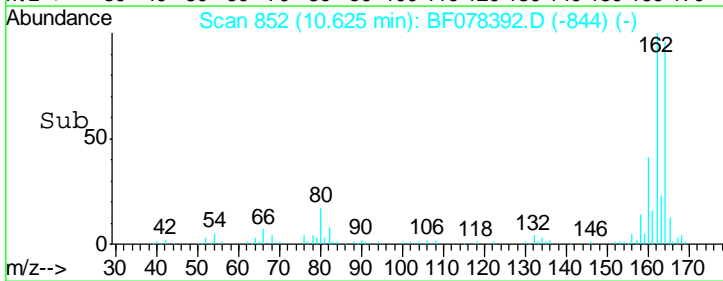
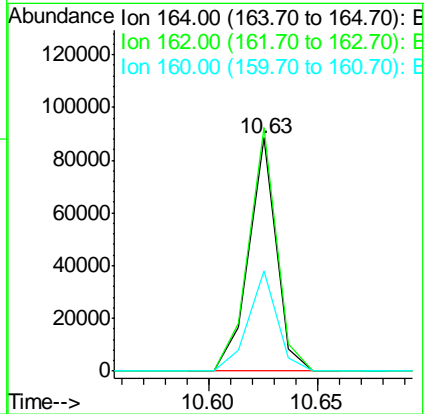
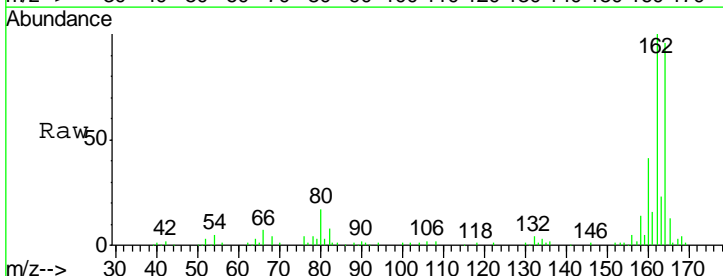
Tgt Ion	Resp	Lower	Upper
142	45303		
141	87.5	70.3	105.5
115	33.0	24.6	37.0

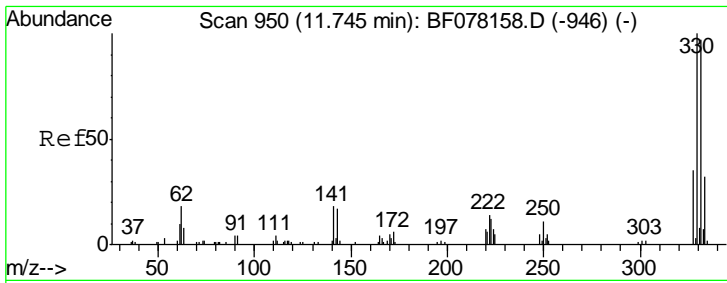
Manual Integrations
APPROVED
 apatel
 4/10/2015 5:13:46 PM



#38
 Acenaphthene-d10
 Concen: 20.00 ng
 RT: 10.63 min Scan# 852
 Delta R.T. -0.01 min
 Lab File: BF078392.D
 Acq: 10 Apr 2015 9:14

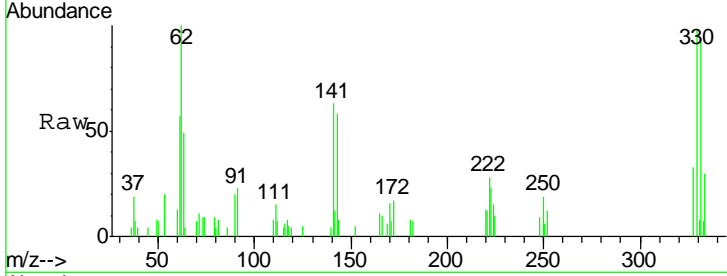
Tgt Ion	Resp	Lower	Upper
164	77831		
162	104.6	82.2	123.2
160	42.9	34.7	52.1





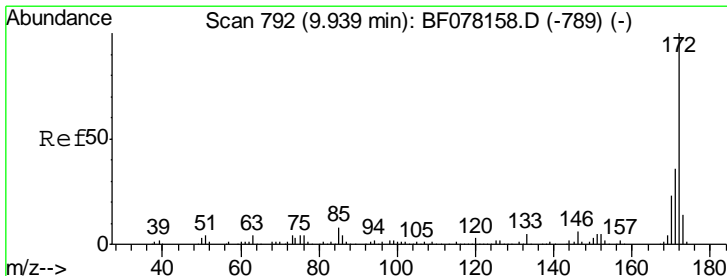
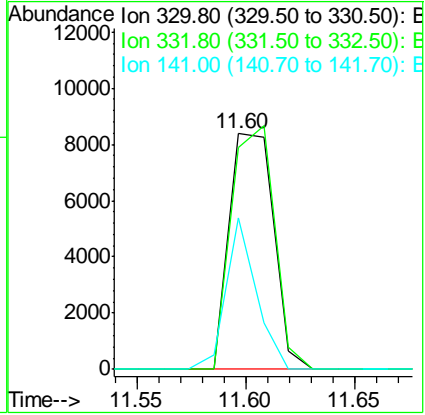
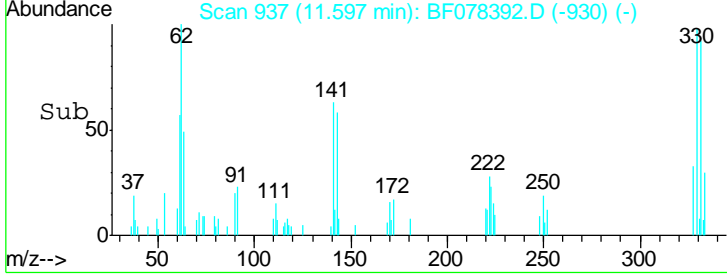
#41
 2,4,6-Tribromophenol
 Concen: 18.37 ng
 RT: 11.60 min Scan# 937
 Delta R.T. -0.02 min
 Lab File: BF078392.D
 Acq: 10 Apr 2015 9:14

Instrument :
 BNA_F
ClientSampled :
 SB-6DDL

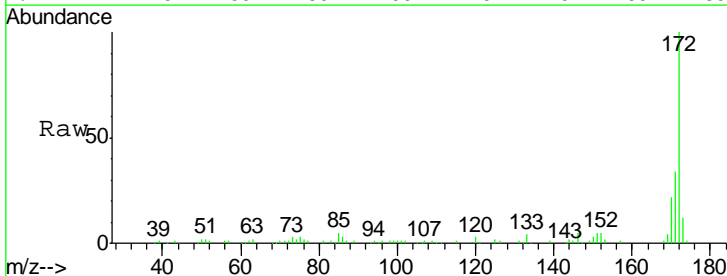


Tgt Ion	Resp	Lower	Upper
330	11858		
330	100		
332	100.4	78.6	117.8
141	43.8	31.2	46.8

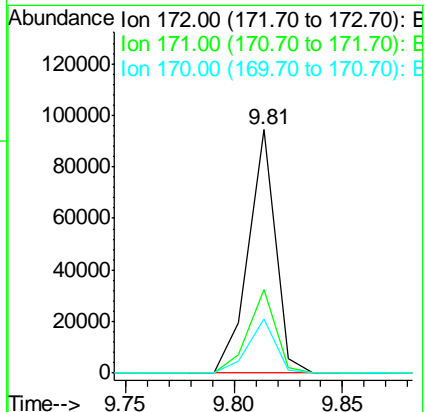
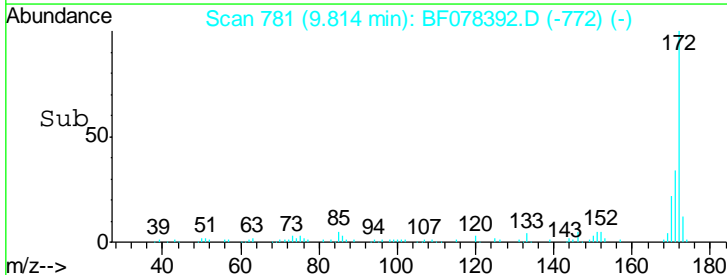
Manual Integrations
APPROVED
 apatel
 4/10/2015 5:13:46 PM

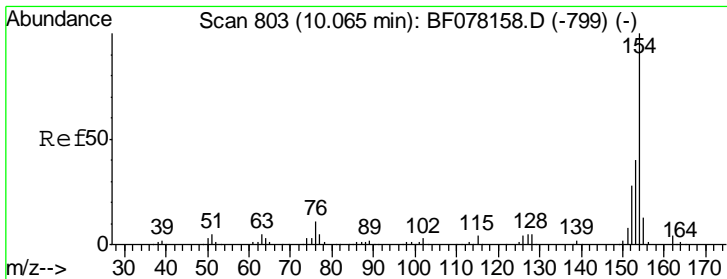


#44
 2-Fluorobiphenyl
 Concen: 15.09 ng
 RT: 9.81 min Scan# 781
 Delta R.T. 0.00 min
 Lab File: BF078392.D
 Acq: 10 Apr 2015 9:14



Tgt Ion	Resp	Lower	Upper
172	82151		
172	100		
171	34.4	28.6	42.8
170	22.3	18.5	27.7



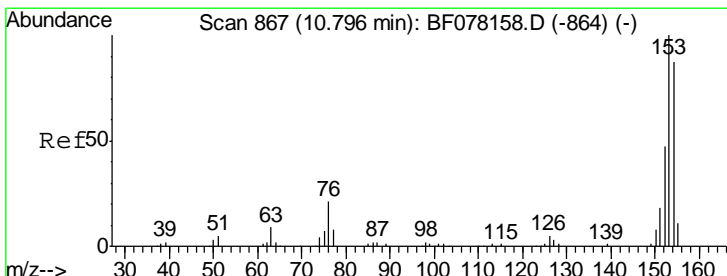
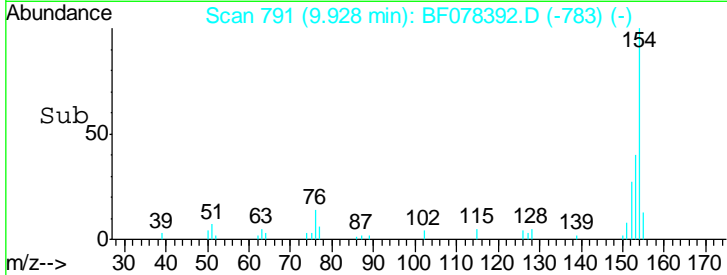
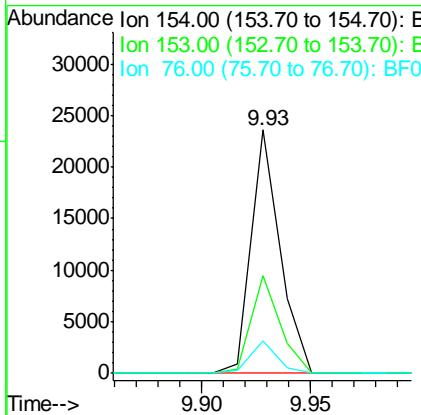
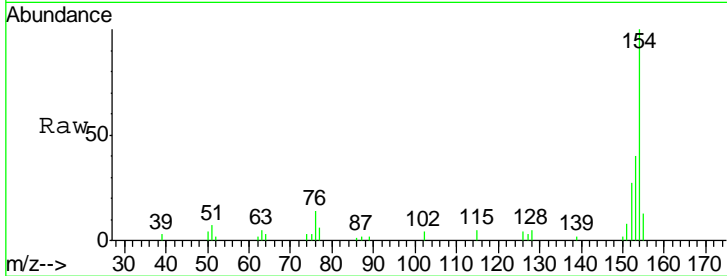


#45
 1,1'-Biphenyl
 Concen: 3.42 ng
 RT: 9.93 min Scan# 791
 Delta R.T. -0.01 min
 Lab File: BF078392.D
 Acq: 10 Apr 2015 9:14

Instrument :
 BNA_F
ClientSampled :
 SB-6DDL

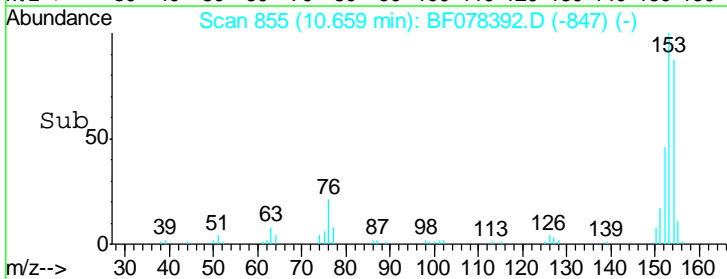
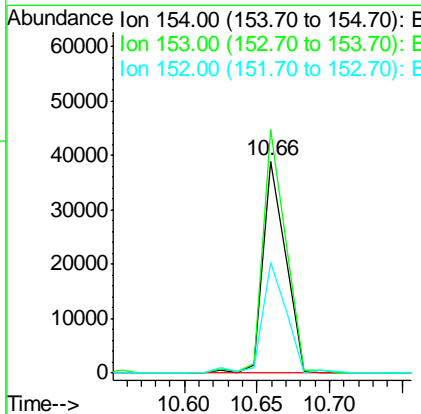
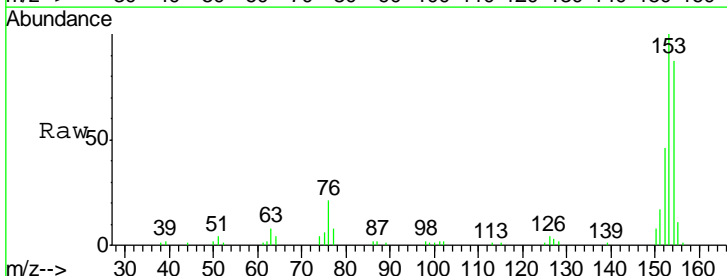
Tgt Ion	Resp	Lower	Upper
154	100		
153	40.1	20.0	60.0
76	13.6	0.0	30.6

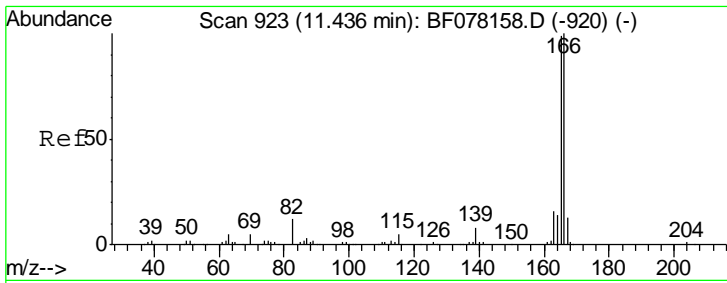
Manual Integrations
APPROVED
 apatel
 4/10/2015 5:13:46 PM



#51
 Acenaphthene
 Concen: 9.20 ng
 RT: 10.66 min Scan# 855
 Delta R.T. -0.01 min
 Lab File: BF078392.D
 Acq: 10 Apr 2015 9:14

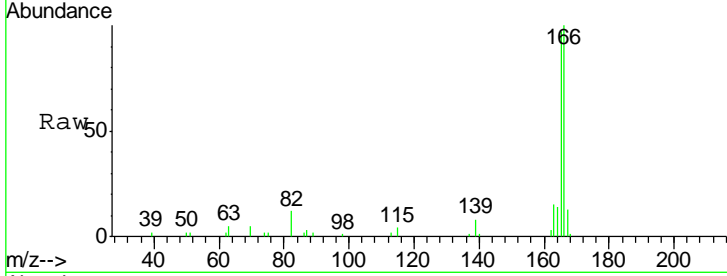
Tgt Ion	Resp	Lower	Upper
154	100		
153	114.9	91.4	137.2
152	52.4	43.0	64.6





#57
 Fluorene
 Concen: 5.57 ng
 RT: 11.30 min Scan# 911
 Delta R.T. -0.01 min
 Lab File: BF078392.D
 Acq: 10 Apr 2015 9:14

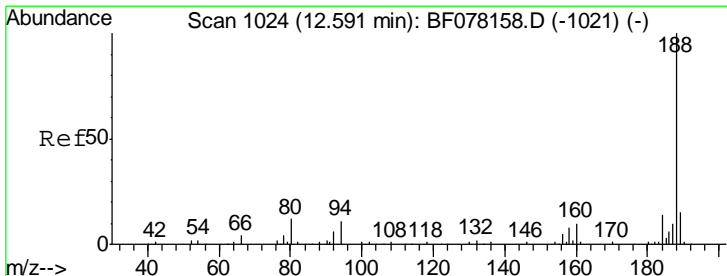
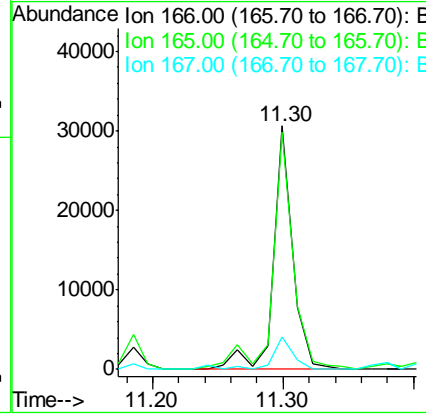
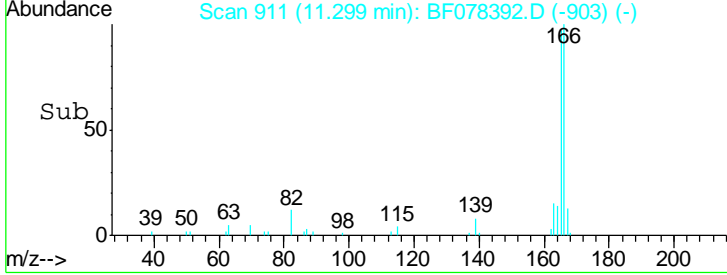
Instrument :
 BNA_F
ClientSampled :
 SB-6DDL



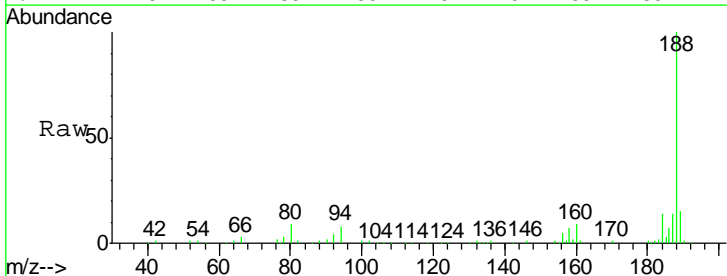
Tgt Ion: 166 Resp: 31398

Ion	Ratio	Lower	Upper
166	100		
165	97.4	78.9	118.3
167	13.1	10.7	16.1

Manual Integrations
APPROVED
 apatel
 4/10/2015 5:13:46 PM

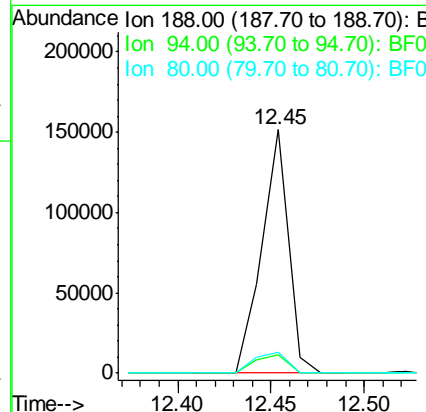
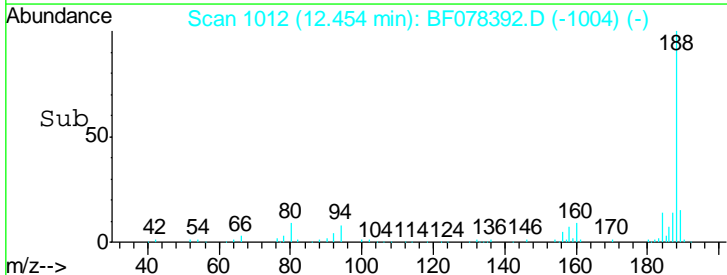


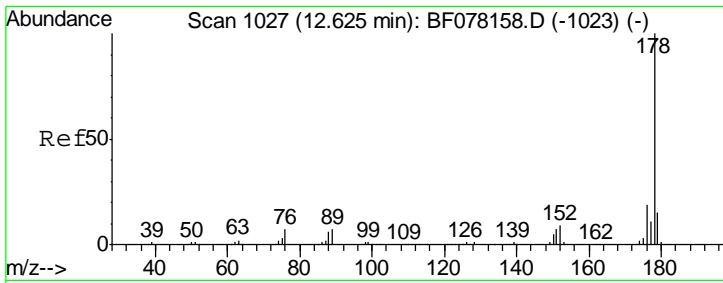
#63
 Phenanthrene-d10
 Concen: 20.00 ng
 RT: 12.45 min Scan# 1012
 Delta R.T. -0.01 min
 Lab File: BF078392.D
 Acq: 10 Apr 2015 9:14



Tgt Ion: 188 Resp: 149333

Ion	Ratio	Lower	Upper
188	100		
94	7.7	9.0	13.4#
80	8.7	9.5	14.3#



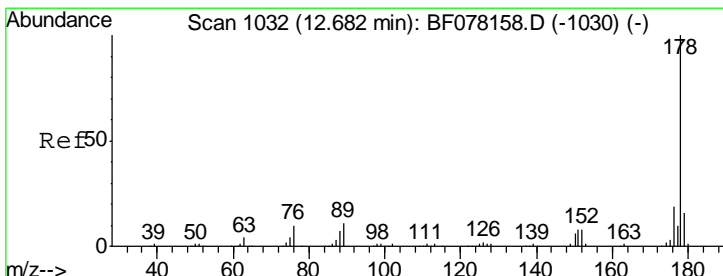
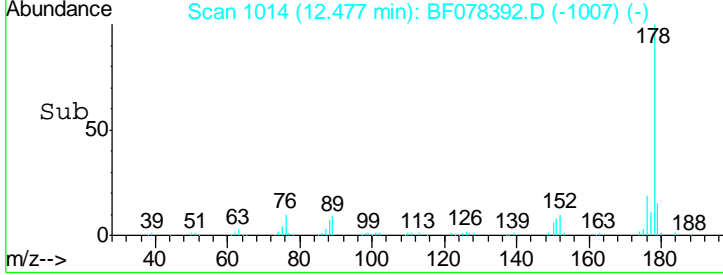
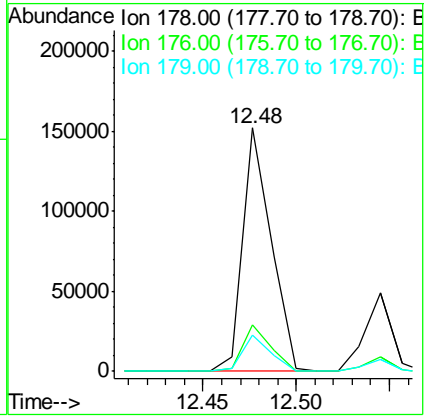
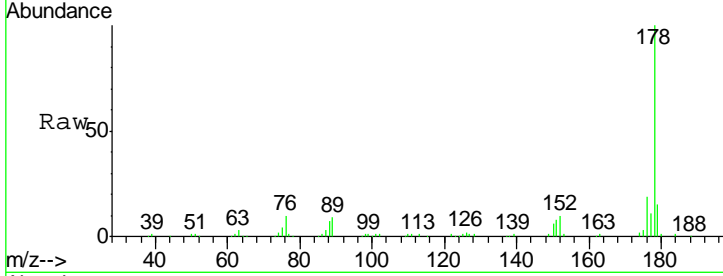


#70
 Phenanthrene
 Concen: 18.62 ng
 RT: 12.48 min Scan# 1014
 Delta R.T. -0.02 min
 Lab File: BF078392.D
 Acq: 10 Apr 2015 9:14

Instrument :
 BNA_F
 ClientSampled :
 SB-6DDL

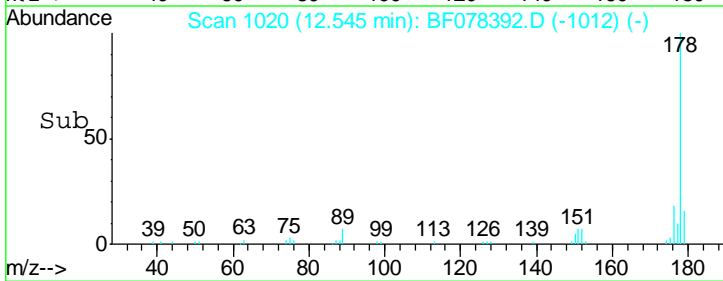
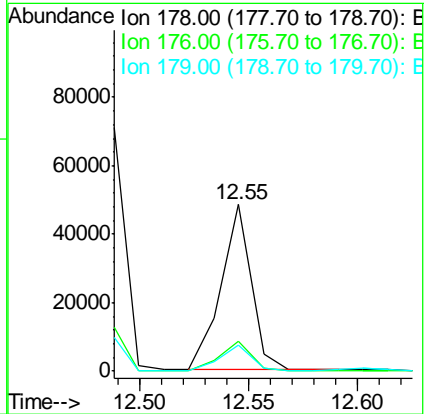
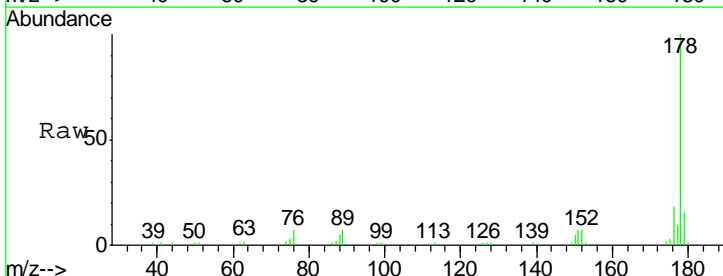
Tgt Ion	Resp	Lower	Upper
178	160816		
176	19.2	15.4	23.0
179	15.1	12.2	18.2

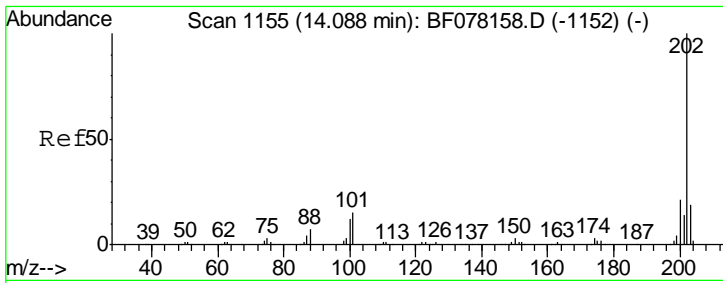
Manual Integrations
 APPROVED
 apatel
 4/10/2015 5:13:46 PM



#71
 Anthracene
 Concen: 5.53 ng
 RT: 12.55 min Scan# 1020
 Delta R.T. -0.01 min
 Lab File: BF078392.D
 Acq: 10 Apr 2015 9:14

Tgt Ion	Resp	Lower	Upper
178	47050		
176	18.0	14.8	22.2
179	15.9	12.4	18.6



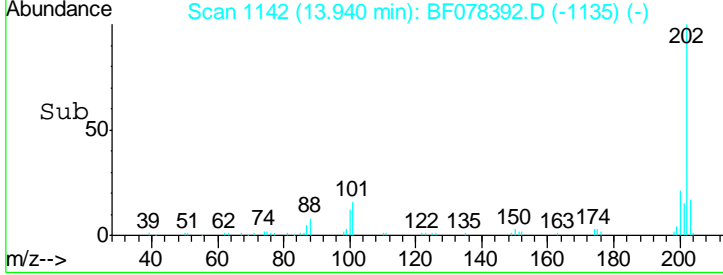
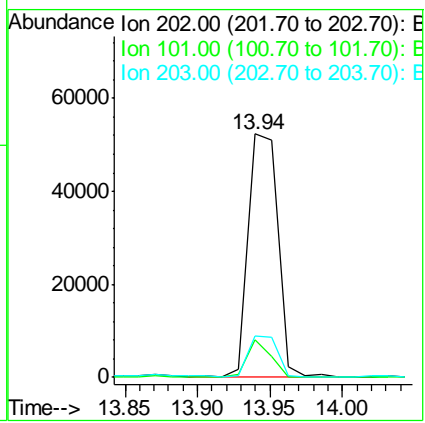
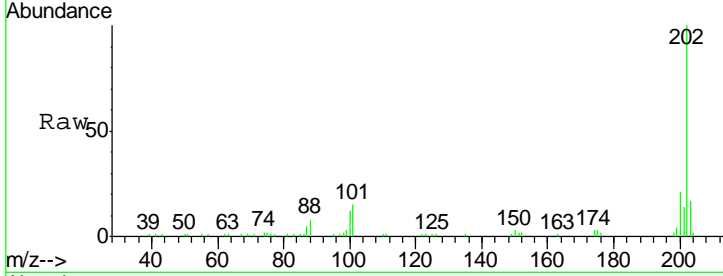


#74
 Fluoranthene
 Concen: 8.19 ng
 RT: 13.94 min Scan# 1142
 Delta R.T. -0.02 min
 Lab File: BF078392.D
 Acq: 10 Apr 2015 9:14

Instrument :
 BNA_F
ClientSampled :
 SB-6DDL

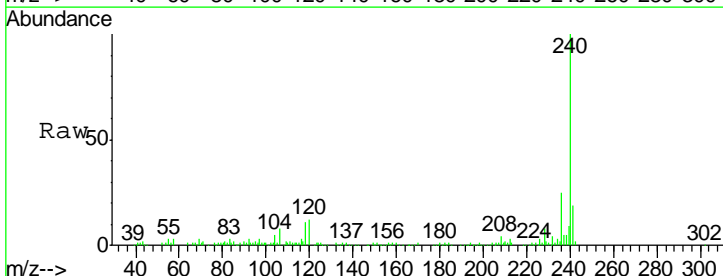
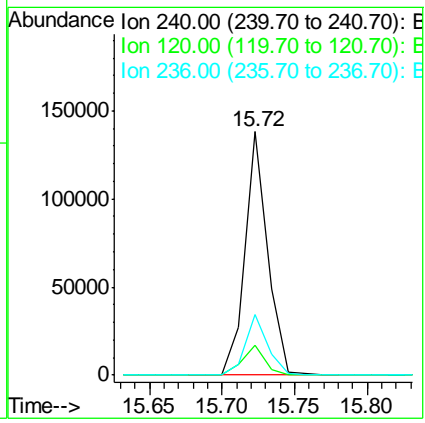
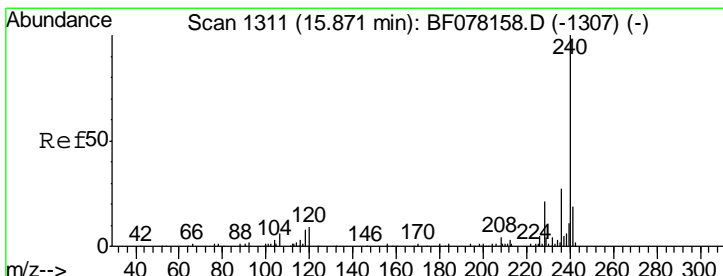
Tgt Ion	Resp	Lower	Upper
202	74582		
101	15.5	0.0	35.2
203	17.2	0.0	38.5

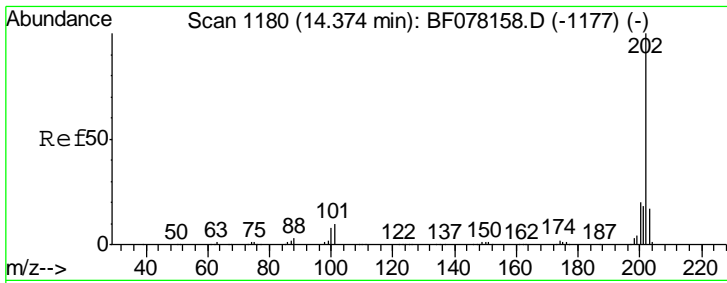
Manual Integrations
APPROVED
 apatel
 4/10/2015 5:13:46 PM



#75
 Chrysene-d12
 Concen: 20.00 ng
 RT: 15.72 min Scan# 1298
 Delta R.T. -0.02 min
 Lab File: BF078392.D
 Acq: 10 Apr 2015 9:14

Tgt Ion	Resp	Lower	Upper
240	149304		
120	12.1	7.1	10.7#
236	25.1	21.4	32.2



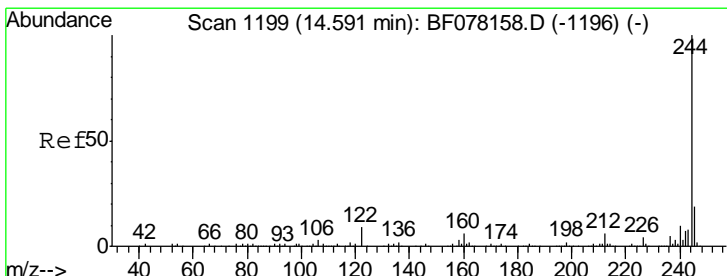
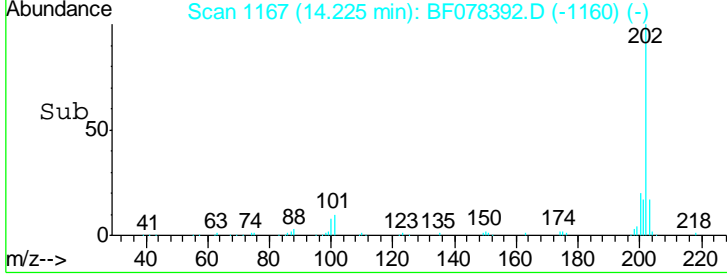
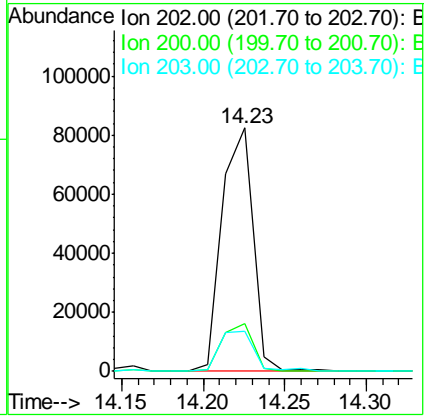
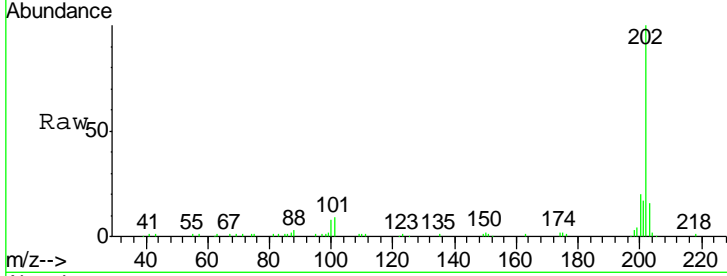


#77
 Pyrene
 Concen: 11.61 ng
 RT: 14.23 min Scan# 1167
 Delta R.T. -0.02 min
 Lab File: BF078392.D
 Acq: 10 Apr 2015 9:14

Instrument :
 BNA_F
 ClientSampled :
 SB-6DDL

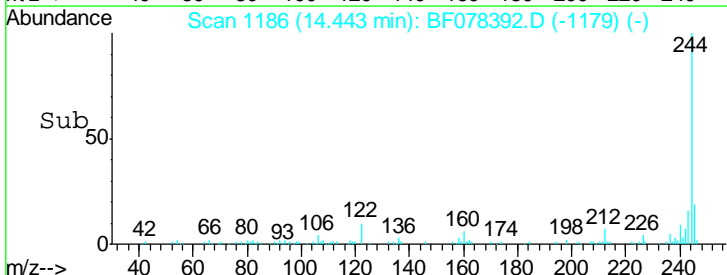
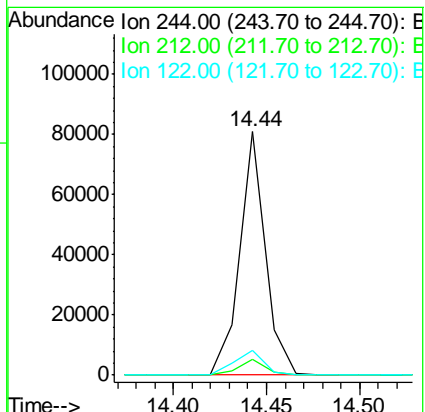
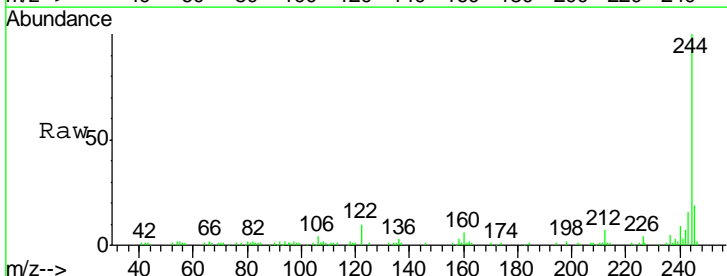
Tgt Ion	Resp	Lower	Upper
202	108820		
200	19.9	16.3	24.5
203	16.5	13.8	20.6

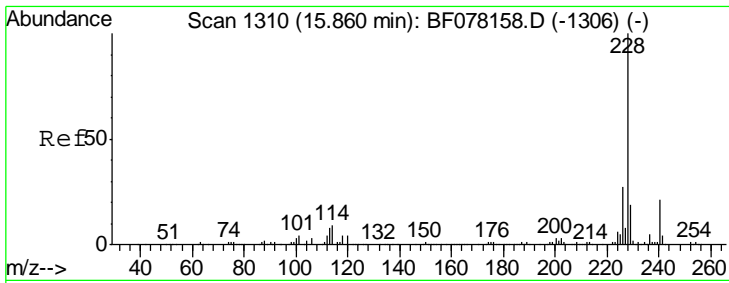
Manual Integrations
APPROVED
 apatel
 4/10/2015 5:13:46 PM



#78
 Terphenyl-d14
 Concen: 11.75 ng
 RT: 14.44 min Scan# 1186
 Delta R.T. -0.02 min
 Lab File: BF078392.D
 Acq: 10 Apr 2015 9:14

Tgt Ion	Resp	Lower	Upper
244	77669		
212	6.6	5.0	7.4
122	10.0	7.1	10.7



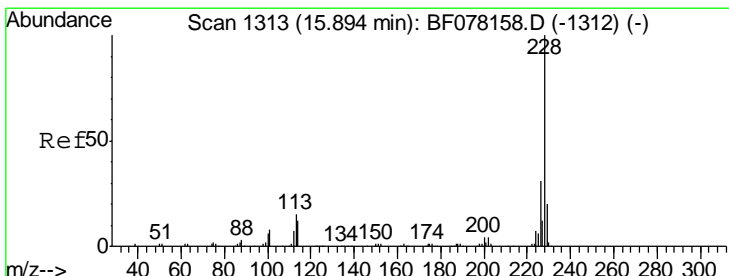
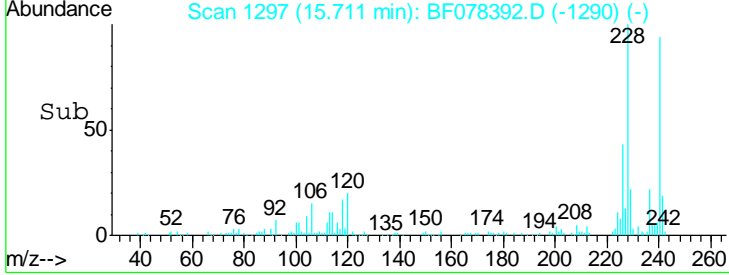
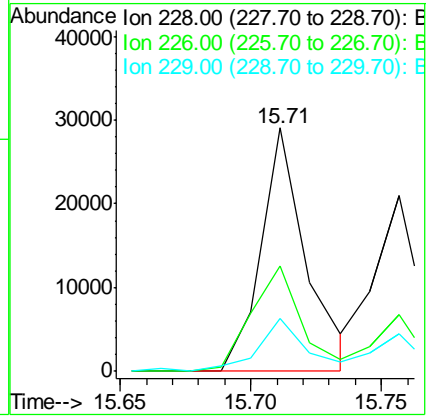
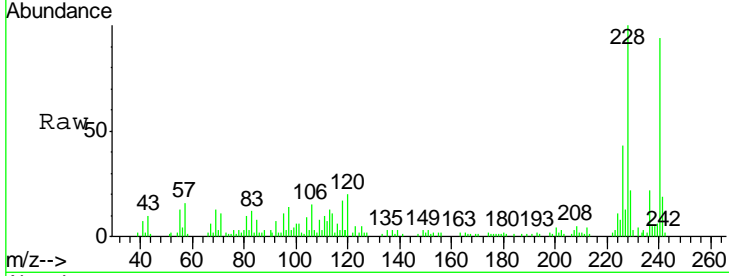


#80
 Benzo(a)anthracene
 Concen: 3.95 ng
 RT: 15.71 min Scan# 1297
 Delta R.T. -0.02 min
 Lab File: BF078392.D
 Acq: 10 Apr 2015 9:14

Instrument :
 BNA_F
ClientSampled :
 SB-6DDL

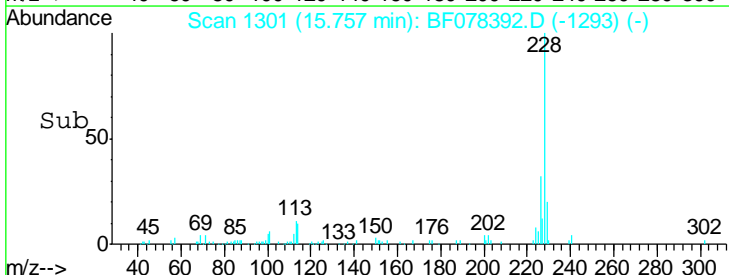
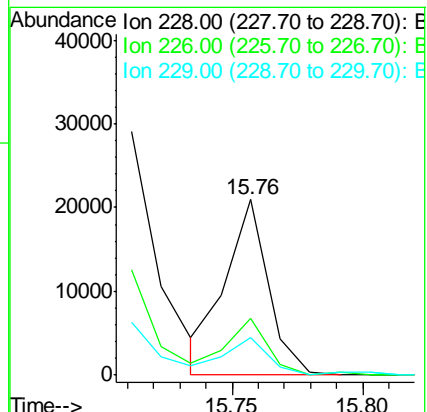
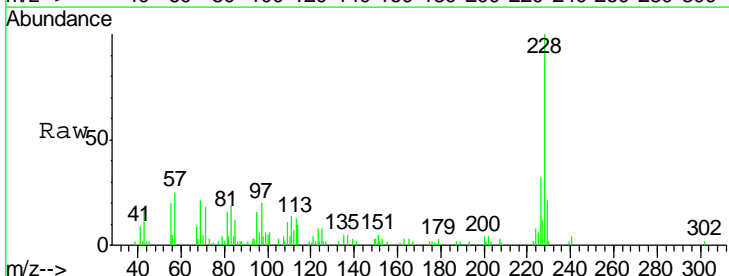
Tgt Ion	Resp	Lower	Upper
228	35047		
226	43.2	21.3	31.9#
229	21.9	15.4	23.2

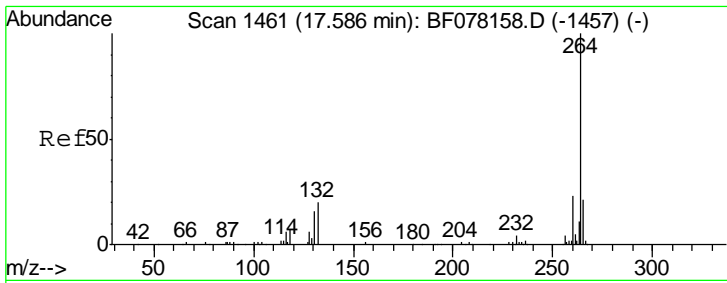
Manual Integrations
APPROVED
 apatel
 4/10/2015 5:13:46 PM



#82
 Chrysene
 Concen: 2.89 ng
 RT: 15.76 min Scan# 1301
 Delta R.T. -0.01 min
 Lab File: BF078392.D
 Acq: 10 Apr 2015 9:14

Tgt Ion	Resp	Lower	Upper
228	24083		
226	32.3	24.2	36.4
229	21.2	15.8	23.8



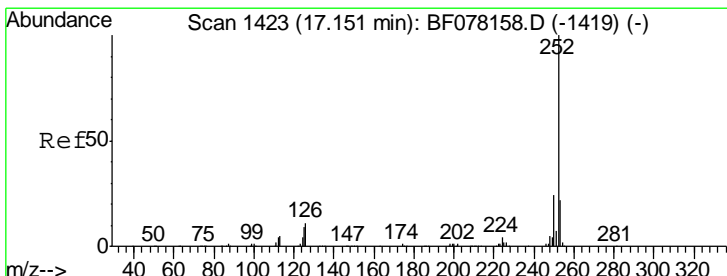
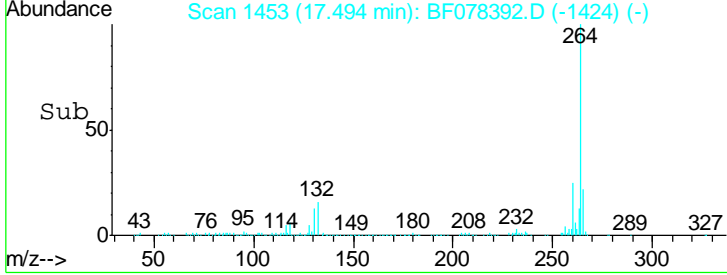
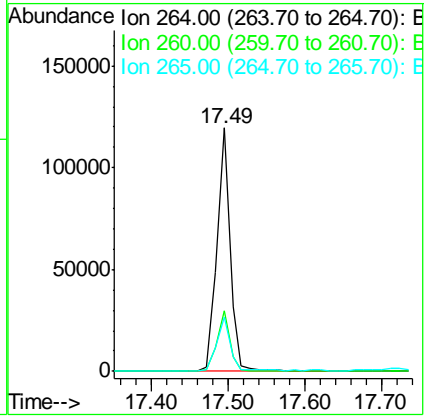
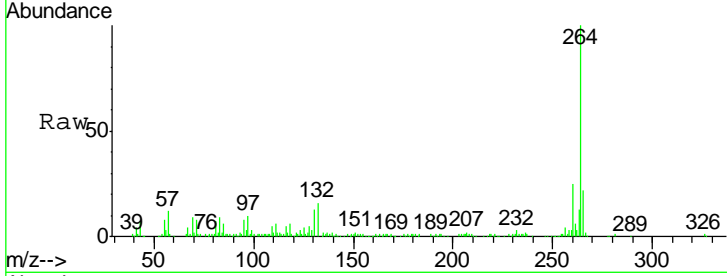


#86
 Perylene-d12
 Concen: 20.00 ng
 RT: 17.49 min Scan# 1453
 Delta R.T. 0.03 min
 Lab File: BF078392.D
 Acq: 10 Apr 2015 9:14

Instrument :
 BNA_F
ClientSampled :
 SB-6DDL

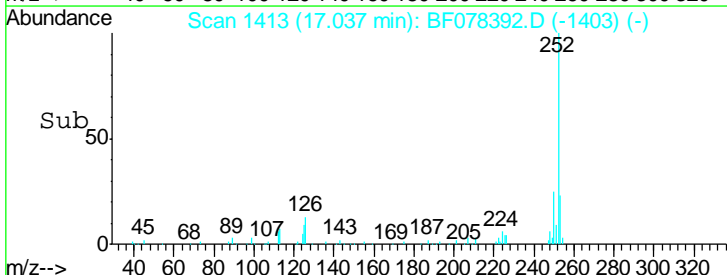
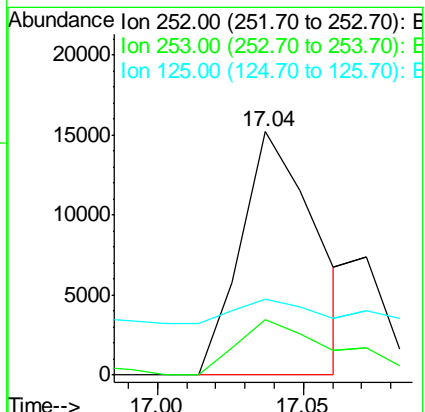
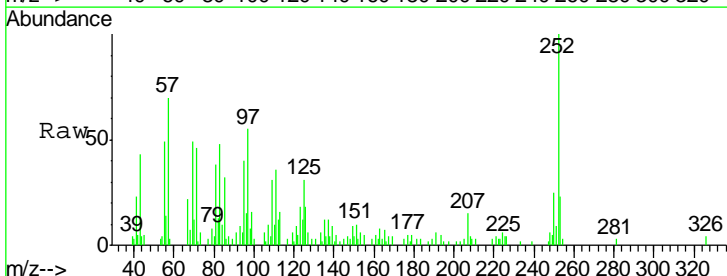
Tgt Ion	Resp	Lower	Upper
264	100		
260	24.7	18.6	27.8
265	22.1	17.0	25.6

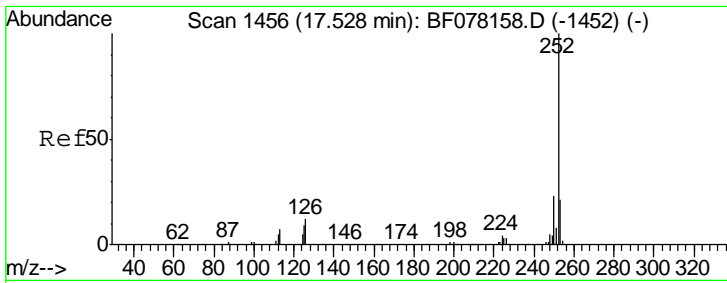
Manual Integrations
APPROVED
 apatel
 4/10/2015 5:13:46 PM



#87
 Benzo(b)fluoranthene
 Concen: 3.02 ng m
 RT: 17.04 min Scan# 1413
 Delta R.T. 0.01 min
 Lab File: BF078392.D
 Acq: 10 Apr 2015 9:14

Tgt Ion	Resp	Lower	Upper
252	100		
253	22.9	17.2	25.8
125	31.0	7.0	10.4#



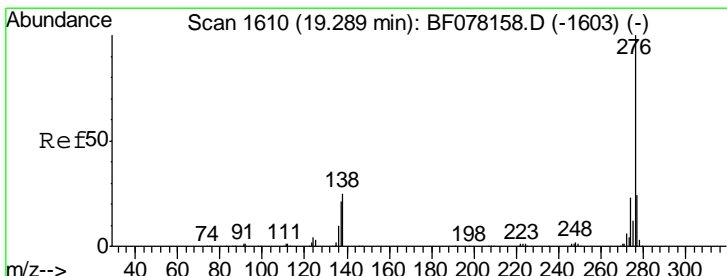
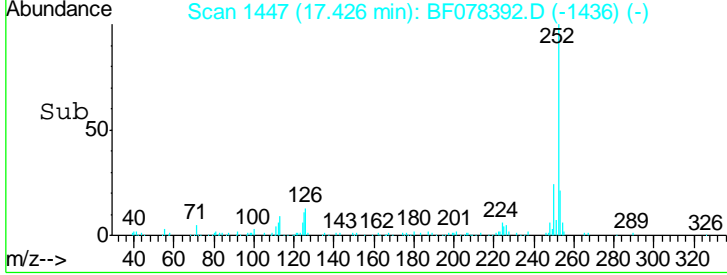
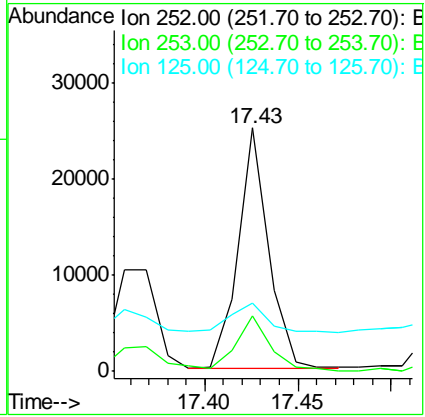
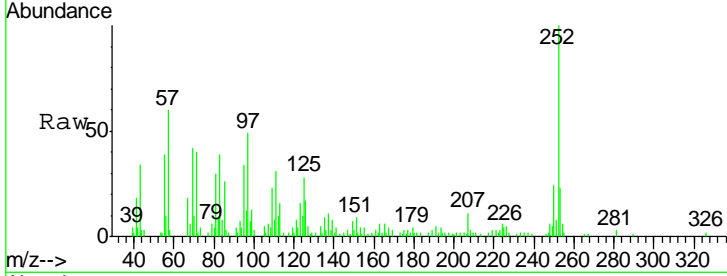


#89
 Benzo(a)pyrene
 Concen: 3.62 ng
 RT: 17.43 min Scan# 1447
 Delta R.T. 0.02 min
 Lab File: BF078392.D
 Acq: 10 Apr 2015 9:14

Instrument :
 BNA_F
 ClientSampled :
 SB-6DDL

Tgt Ion	Resp	Lower	Upper
252	28178		
253	22.6	16.8	25.2
125	27.8	7.4	11.0#

Manual Integrations
 APPROVED
 apatel
 4/10/2015 5:13:46 PM



#91
 Benzo(g,h,i)perylene
 Concen: 2.05 ng m
 RT: 19.14 min Scan# 1597
 Delta R.T. -0.02 min
 Lab File: BF078392.D
 Acq: 10 Apr 2015 9:14

Tgt Ion	Resp	Lower	Upper
276	15983		
277	24.8	19.0	28.4
138	32.6	19.9	29.9#

