

Data Path : Z:\SVOASRV\HPCHEM1\BNA F\DATA\BF040919\
 Data File : BF113671.D
 Acq On : 9 Apr 2019 19:57
 Operator : JU/SJ
 Sample : K2199-06
 Misc :
 ALS Vial : 20 Sample Multiplier: 1

Instrument :
 BNA_F
 ClientSampleId :

Quant Time: Apr 10 02:25:34 2019
 Quant Method : Z:\SVOASRV\HPCHEM1\BNA F\METHODS\8270-BF040319.M
 Quant Title : ASP BNA STANDARDS FOR 5 POINT CALIBRATION
 QLast Update : Thu Apr 04 04:05:31 2019
 Response via : Initial Calibration

Internal Standards	R.T.	QIon	Response	Conc	Units	Dev(Min)
1) 1,4-Dichlorobenzene-d4	6.68	152	107221	20.00	ng	0.00
21) Naphthalene-d8	7.96	136	398810	20.00	ng	0.00
39) Acenaphthene-d10	9.71	164	178712	20.00	ng	-0.01
64) Phenanthrene-d10	11.19	188	317336	20.00	ng	-0.01
76) Chrysene-d12	13.83	240	318967	20.00	ng	-0.02
87) Perylene-d12	15.23	264	297302	20.00	ng	-0.02

System Monitoring Compounds	R.T.	QIon	Response	Conc	Units	Dev(Min)
5) 2-Fluorophenol	5.30	112	722706	114.94	ng	0.00
7) Phenol-d6	6.33	99	839509	108.33	ng	0.00
23) Nitrobenzene-d5	7.25	82	622992	91.50	ng	-0.01
42) 2,4,6-Tribromophenol	10.50	330	284335	132.45	ng	-0.01
45) 2-Fluorobiphenyl	9.03	172	1141697	102.85	ng	-0.02
79) Terphenyl-d14	12.77	244	1120797	71.54	ng	-0.02

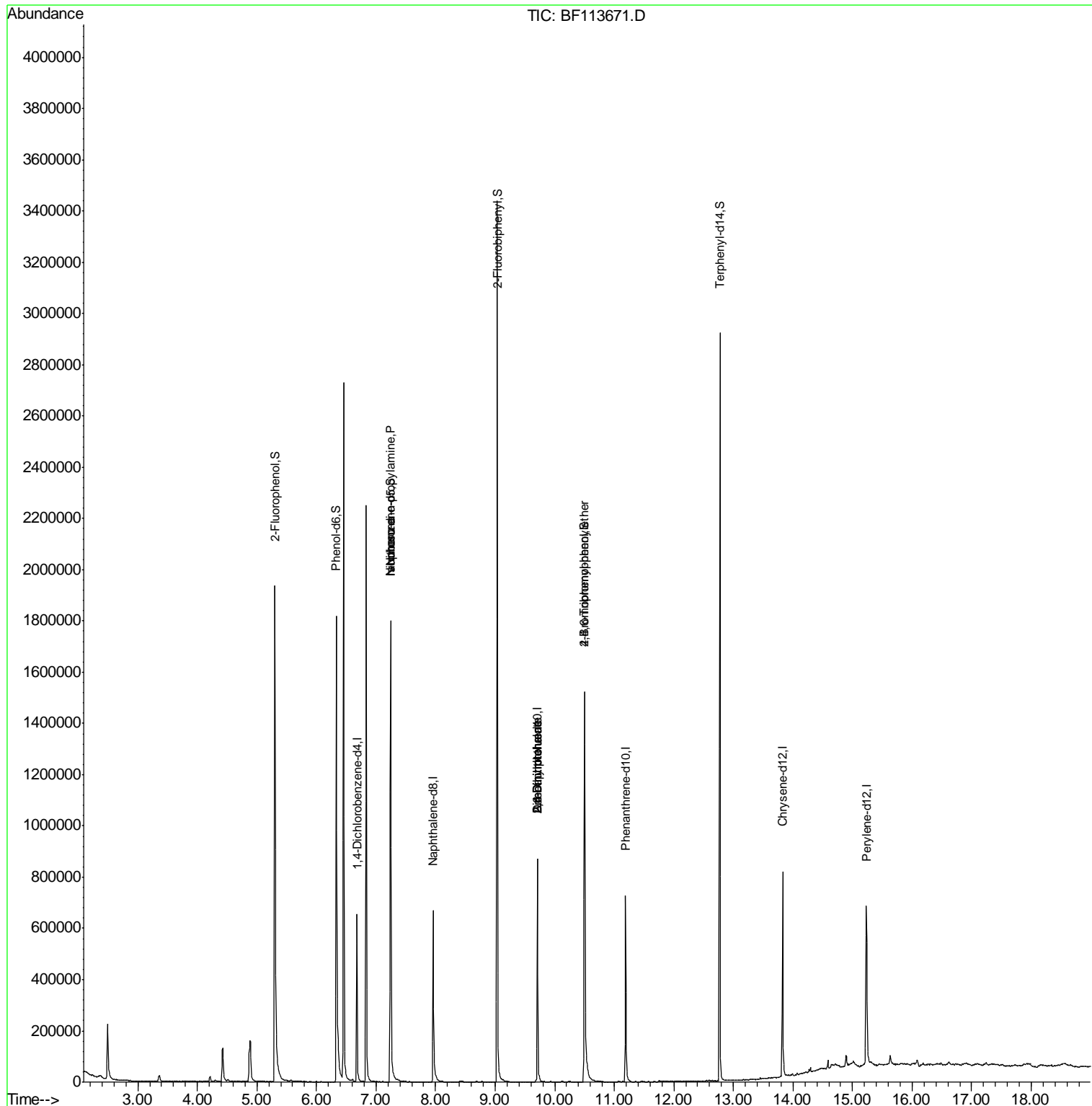
Target Compounds	R.T.	QIon	Response	Conc	Units	Qvalue
19) n-Nitroso-di-n-propylamine	7.25	70	79078	16.548	ng	# 77
25) Isophorone	7.25	82	622989	47.500	ng	# 64
50) Dimethylphthalate	9.71	163	43049	3.268	ng	# 1
51) 2,6-Dinitrotoluene	9.71	165	21948	7.558	ng	# 26
57) 2,4-Dinitrotoluene	9.71	165	21948	6.250	ng	# 23
67) 4-Bromophenyl-phenylether	10.50	248	15643	4.395	ng	# 1

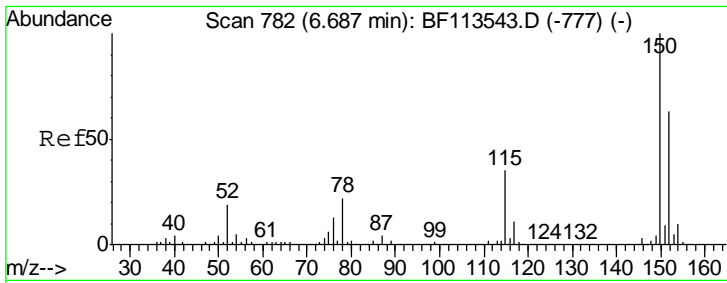
(#) = qualifier out of range (m) = manual integration (+) = signals summed

Data Path : Z:\SVOASRV\HPCHEM1\BNA F\DATA\BF040919\
 Data File : BF113671.D
 Acq On : 9 Apr 2019 19:57
 Operator : JU/SJ
 Sample : K2199-06
 Misc :
 ALS Vial : 20 Sample Multiplier: 1

Instrument :
 BNA_F
 ClientSampled :

Quant Time: Apr 10 02:25:34 2019
 Quant Method : Z:\SVOASRV\HPCHEM1\BNA F\METHODS\8270-BF040319.M
 Quant Title : ASP BNA STANDARDS FOR 5 POINT CALIBRATION
 QLast Update : Thu Apr 04 04:05:31 2019
 Response via : Initial Calibration

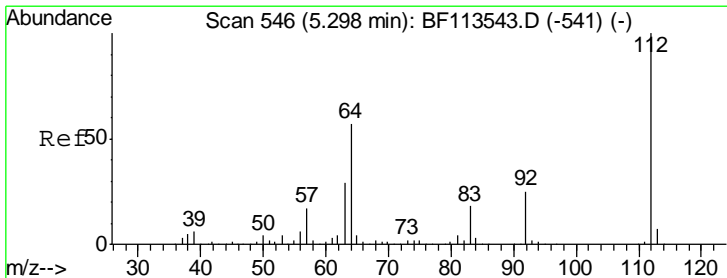
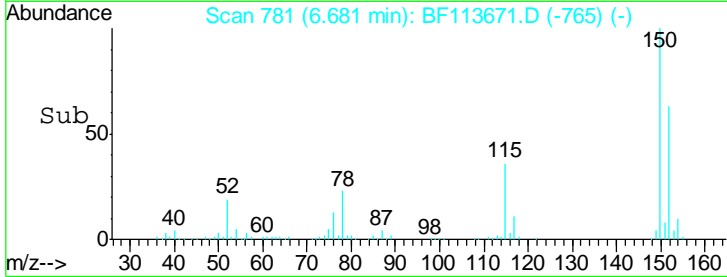
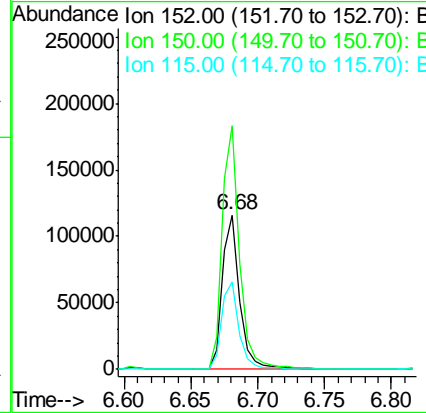
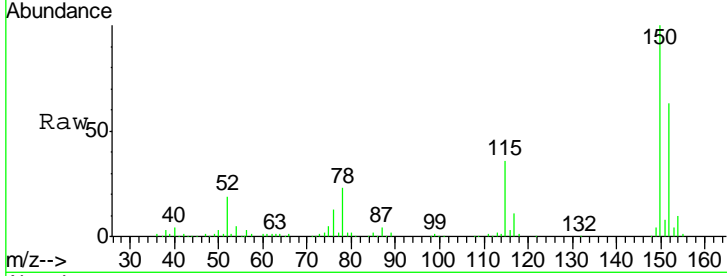




#1
 1,4-Dichlorobenzene-d4
 Concen: 20.000 ng
 RT: 6.68 min Scan# 781
 Delta R.T. -0.01 min
 Lab File: BF113671.D
 Acq: 9 Apr 2019 19:57

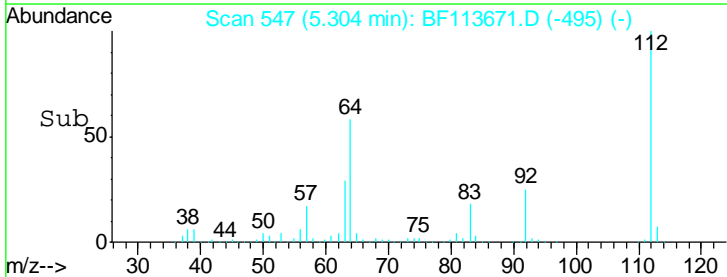
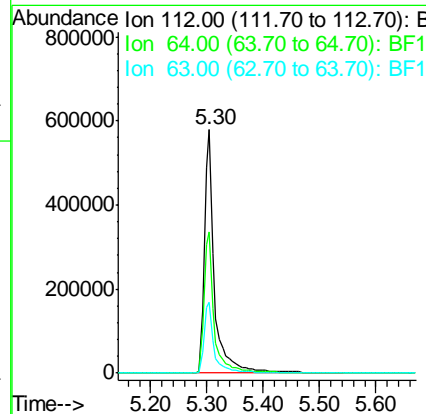
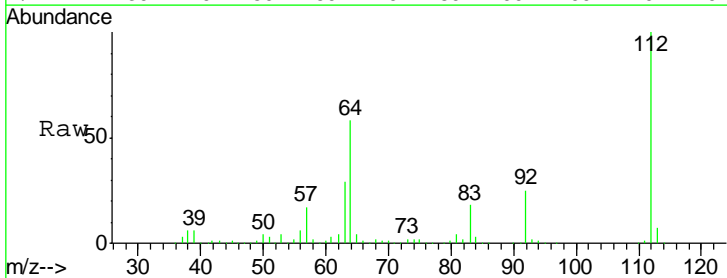
Instrument :
 BNA_F
 ClientSampled :

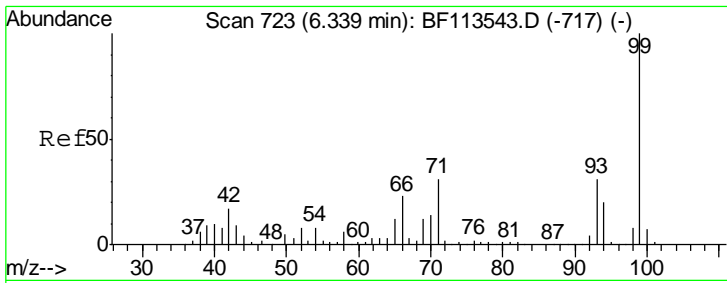
Tgt Ion	Resp	Lower	Upper
152	107221		
150	157.6	124.7	187.1
115	56.3	46.0	69.0



#5
 2-Fluorophenol
 Concen: 114.938 ng
 RT: 5.30 min Scan# 547
 Delta R.T. 0.01 min
 Lab File: BF113671.D
 Acq: 9 Apr 2019 19:57

Tgt Ion	Resp	Lower	Upper
112	722706		
64	57.9	49.2	73.8
63	29.1	24.9	37.3

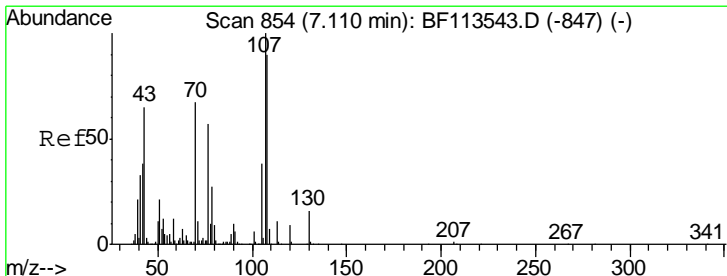
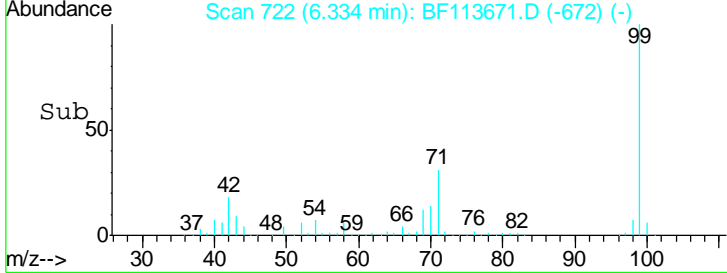
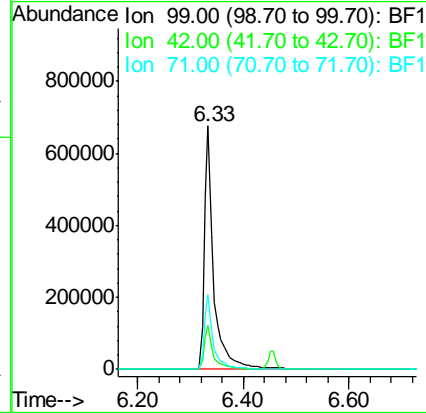
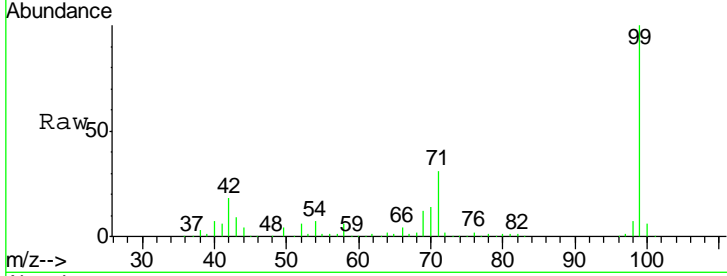




#7
 Phenol-d6
 Concen: 108.328 ng
 RT: 6.33 min Scan# 722
 Delta R.T. -0.01 min
 Lab File: BF113671.D
 Acq: 9 Apr 2019 19:57

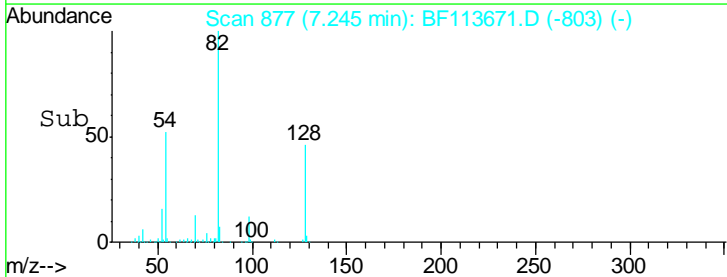
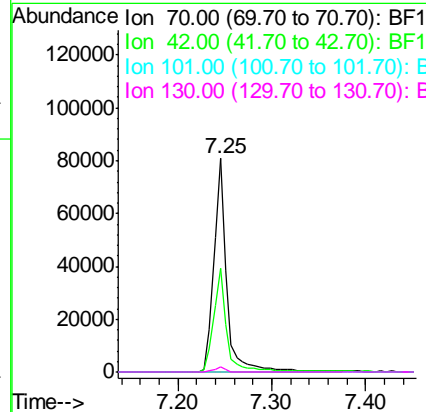
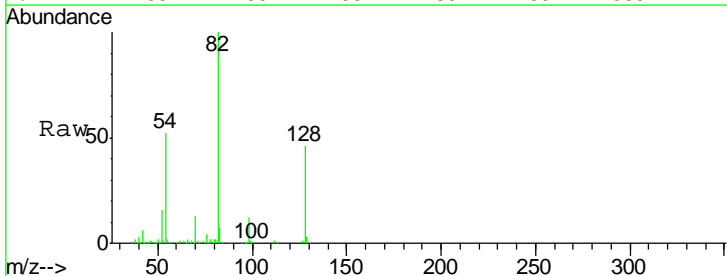
Instrument :
 BNA_F
 ClientSampled :

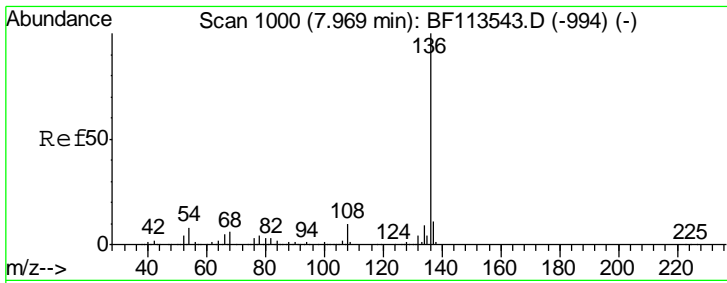
Tgt Ion	Resp	Lower	Upper
99	100		
42	17.9	14.8	22.2
71	30.9	24.9	37.3



#19
 n-Nitroso-di-n-propylamine
 Concen: 16.548 ng
 RT: 7.25 min Scan# 877
 Delta R.T. 0.14 min
 Lab File: BF113671.D
 Acq: 9 Apr 2019 19:57

Tgt Ion	Resp	Lower	Upper
70	100		
42	48.5	48.4	72.6
101	0.0	7.8	11.8#
130	2.3	18.2	27.4#



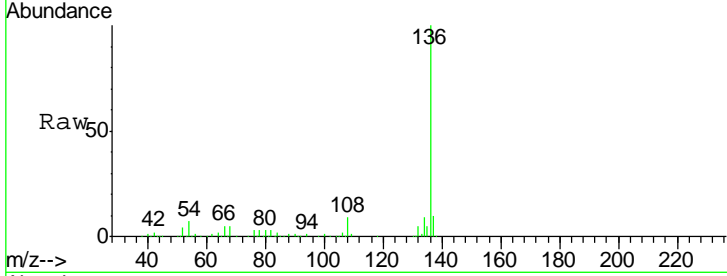


#21
 Naphthalene-d8
 Concen: 20.000 ng
 RT: 7.96 min Scan# 999
 Delta R.T. -0.01 min
 Lab File: BF113671.D
 Acq: 9 Apr 2019 19:57

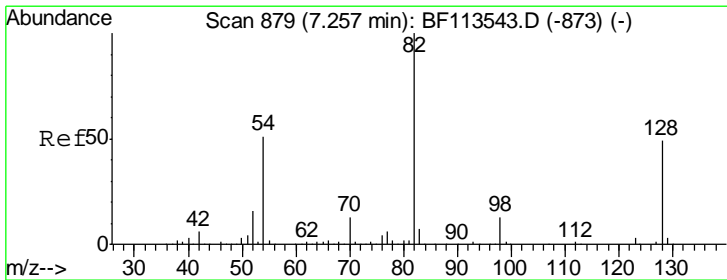
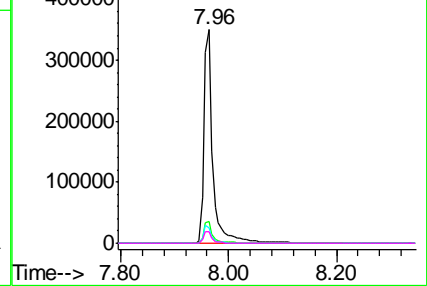
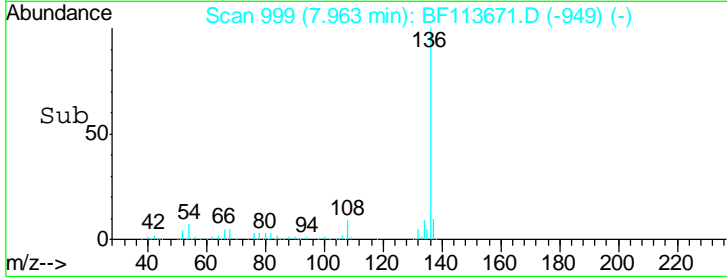
Instrument :
 BNA_F
 ClientSampled :

Tgt Ion: 136 Resp: 398810

Ion	Ratio	Lower	Upper
136	100		
137	10.4	8.9	13.3
54	7.3	7.0	10.6
68	5.4	4.8	7.2



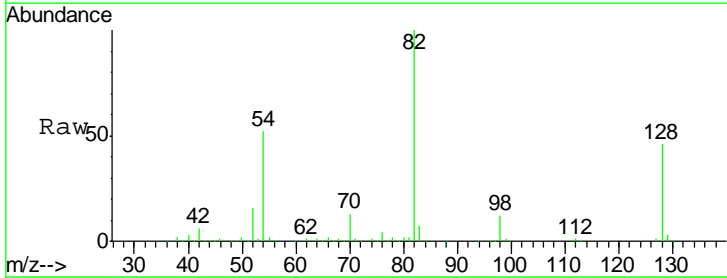
Abundance Ion 136.00 (135.70 to 136.70): E
 Ion 137.00 (136.70 to 137.70): E
 Ion 54.00 (53.70 to 54.70): BF1
 Ion 68.00 (67.70 to 68.70): BF1



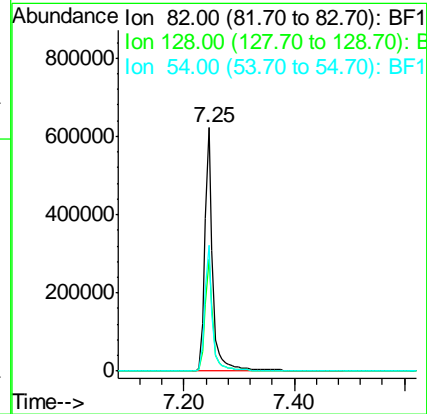
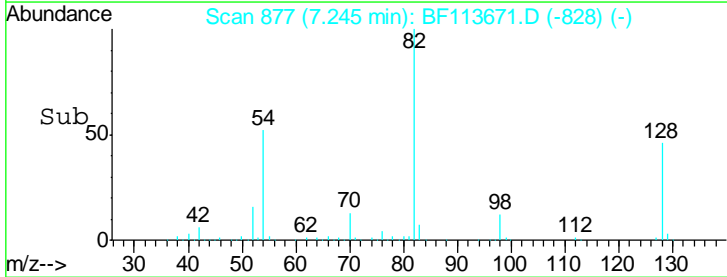
#23
 Nitrobenzene-d5
 Concen: 91.502 ng
 RT: 7.25 min Scan# 877
 Delta R.T. -0.01 min
 Lab File: BF113671.D
 Acq: 9 Apr 2019 19:57

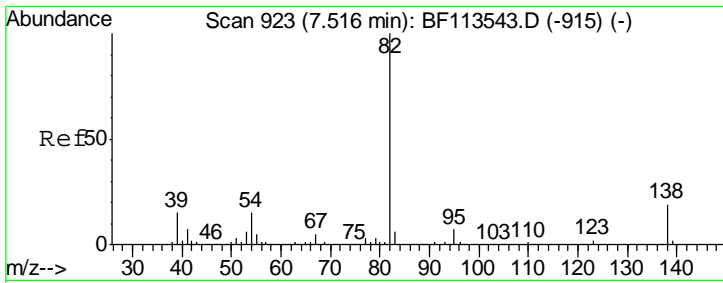
Tgt Ion: 82 Resp: 622992

Ion	Ratio	Lower	Upper
82	100		
128	45.9	36.5	54.7
54	51.8	42.2	63.2



Abundance Ion 82.00 (81.70 to 82.70): BF1
 Ion 128.00 (127.70 to 128.70): E
 Ion 54.00 (53.70 to 54.70): BF1

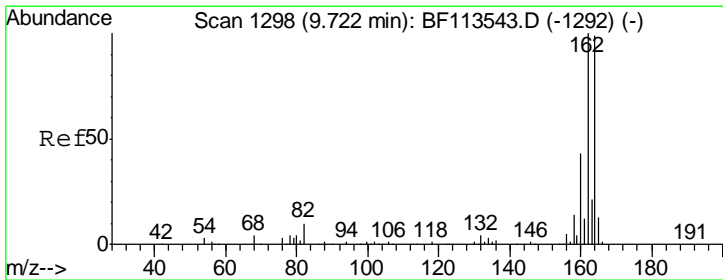
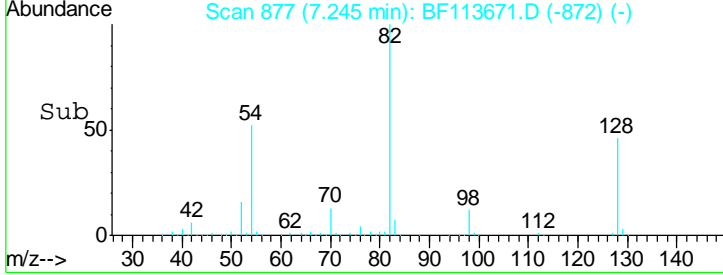
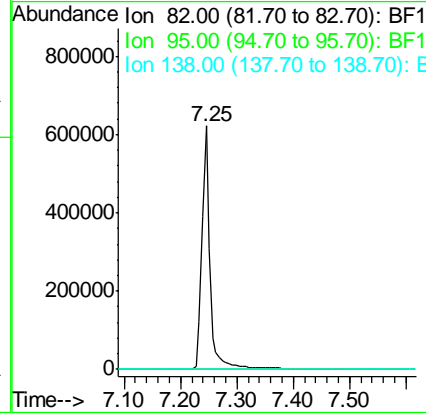
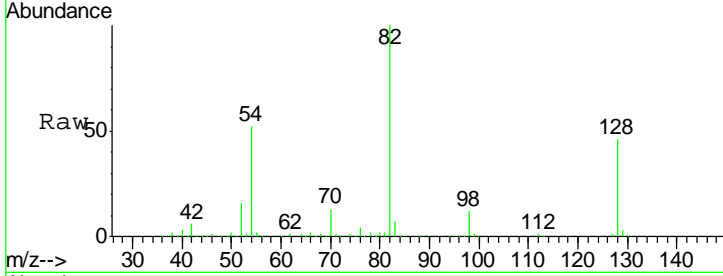




#25
 Isophorone
 Concen: 47.500 ng
 RT: 7.25 min Scan# 877
 Delta R.T. -0.27 min
 Lab File: BF113671.D
 Acq: 9 Apr 2019 19:57

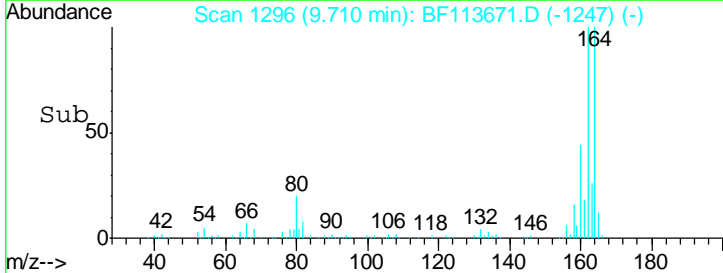
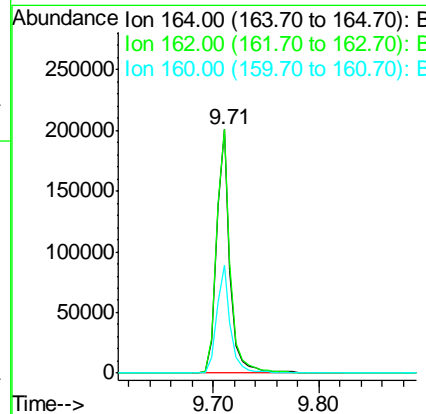
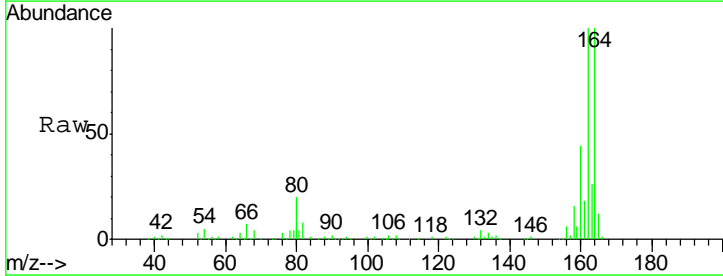
Instrument :
 BNA_F
 ClientSampled :

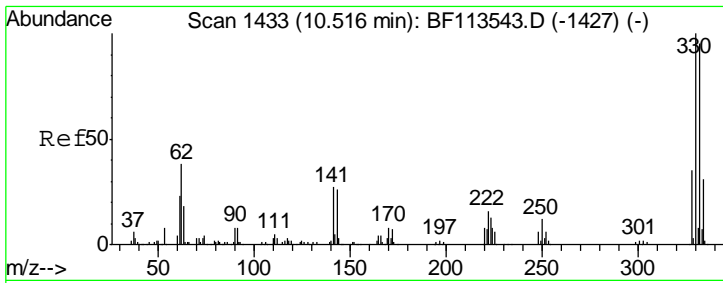
Tgt Ion	Resp	Lower	Upper
82	100		
95	0.0	5.5	8.3#
138	0.0	15.2	22.8#



#39
 Acenaphthene-d10
 Concen: 20.000 ng
 RT: 9.71 min Scan# 1296
 Delta R.T. -0.01 min
 Lab File: BF113671.D
 Acq: 9 Apr 2019 19:57

Tgt Ion	Resp	Lower	Upper
164	100		
162	99.8	81.8	122.6
160	44.3	36.4	54.6

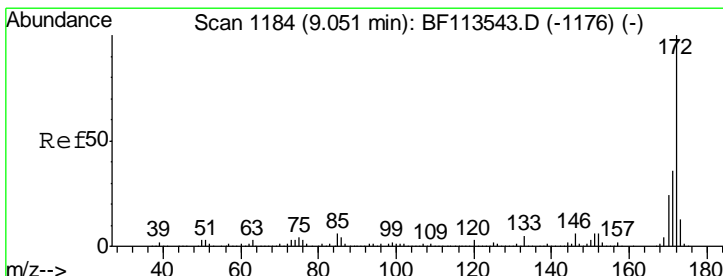
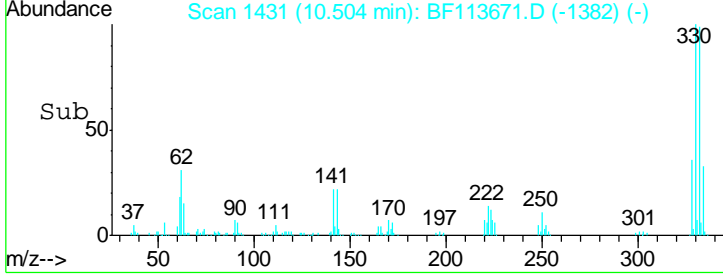
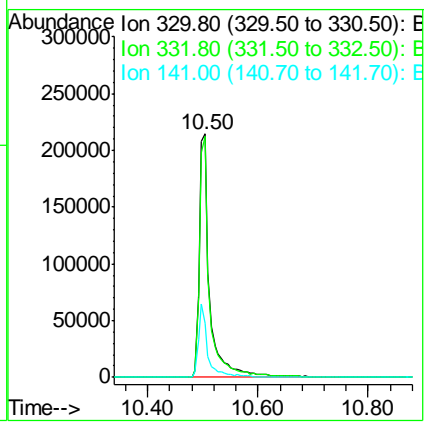
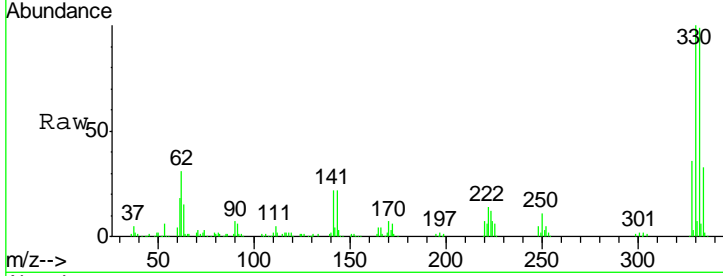




#42
 2,4,6-Tribromophenol
 Concen: 132.448 ng
 RT: 10.50 min Scan# 1431
 Delta R.T. -0.01 min
 Lab File: BF113671.D
 Acq: 9 Apr 2019 19:57

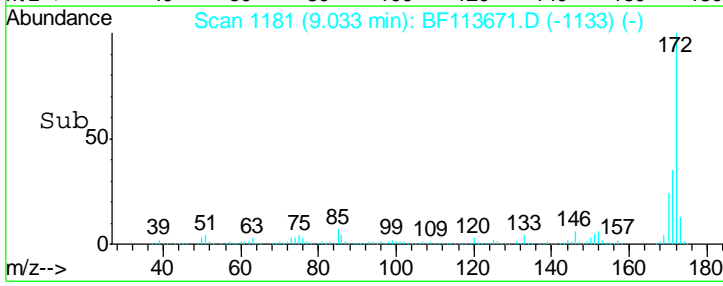
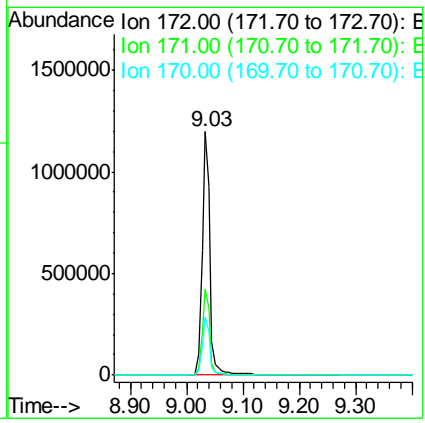
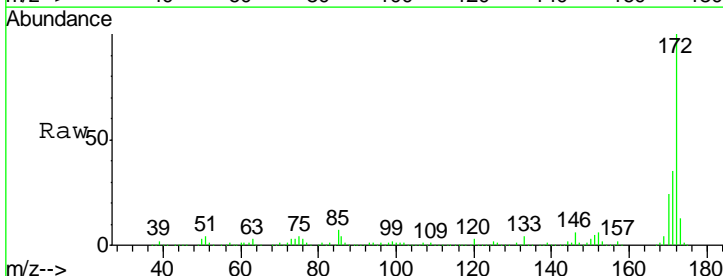
Instrument :
 BNA_F
 ClientSampled :

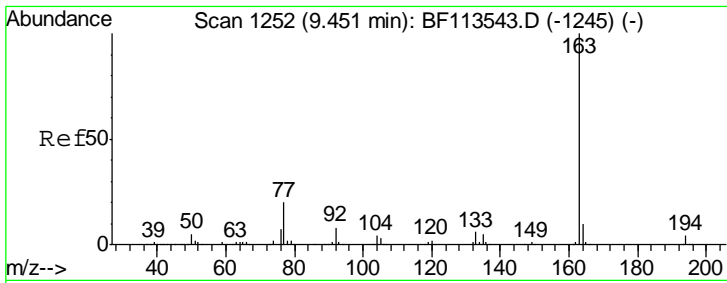
Tgt Ion	Resp	Lower	Upper
330	100		
332	96.3	77.8	116.6
141	27.0	22.7	34.1



#45
 2-Fluorobiphenyl
 Concen: 102.847 ng
 RT: 9.03 min Scan# 1181
 Delta R.T. -0.02 min
 Lab File: BF113671.D
 Acq: 9 Apr 2019 19:57

Tgt Ion	Resp	Lower	Upper
172	100		
171	35.5	29.0	43.6
170	24.1	19.5	29.3

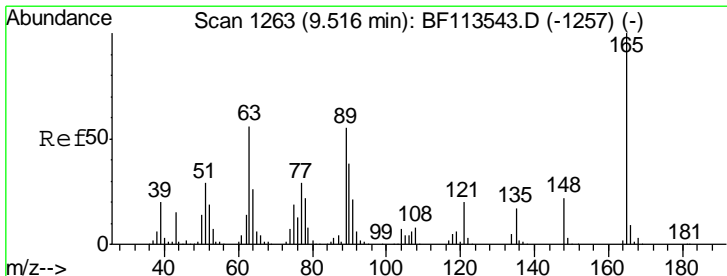
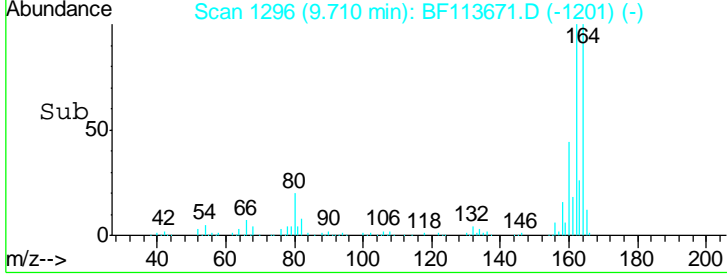
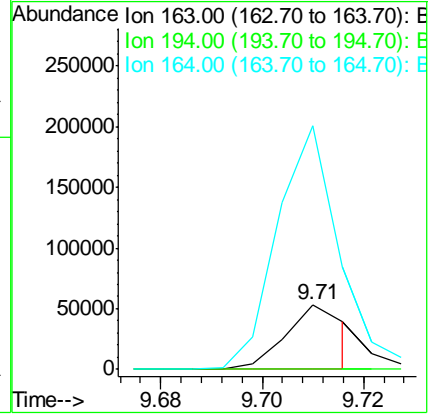
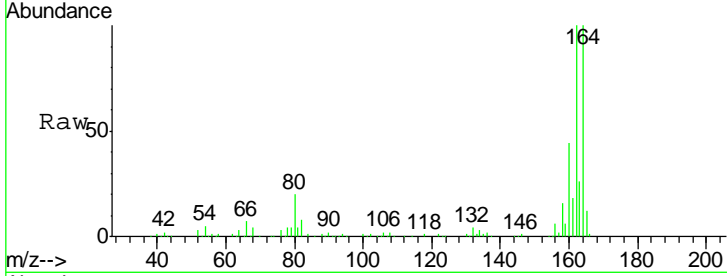




#50
 Dimethylphthalate
 Concen: 3.268 ng
 RT: 9.71 min Scan# 1296
 Delta R.T. 0.26 min
 Lab File: BF113671.D
 Acq: 9 Apr 2019 19:57

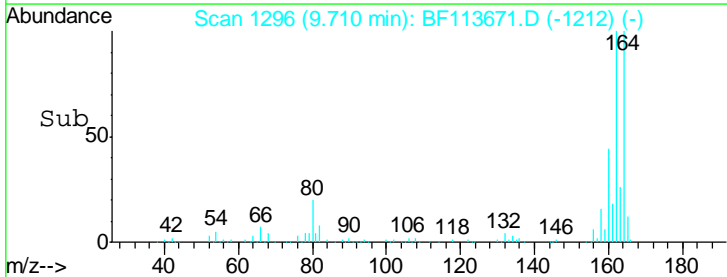
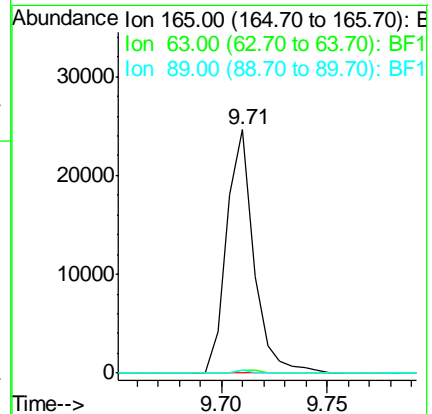
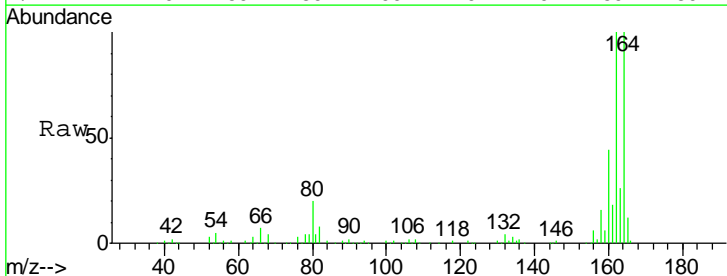
Instrument :
 BNA_F
 ClientSampled :

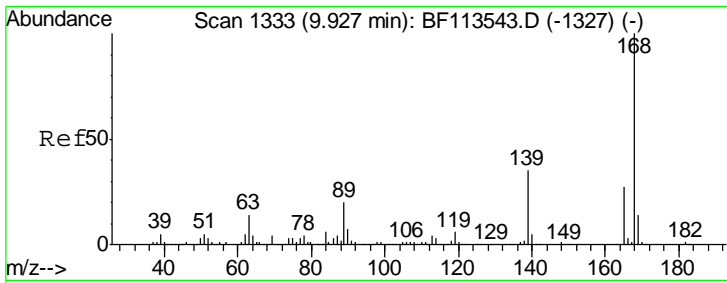
Tgt Ion	Resp	Lower	Upper
163	43049		
194	0.0	3.0	4.6#
164	377.4	8.1	12.1#



#51
 2,6-Dinitrotoluene
 Concen: 7.558 ng
 RT: 9.71 min Scan# 1296
 Delta R.T. 0.19 min
 Lab File: BF113671.D
 Acq: 9 Apr 2019 19:57

Tgt Ion	Resp	Lower	Upper
165	21948		
63	1.3	43.4	65.0#
89	1.4	43.1	64.7#

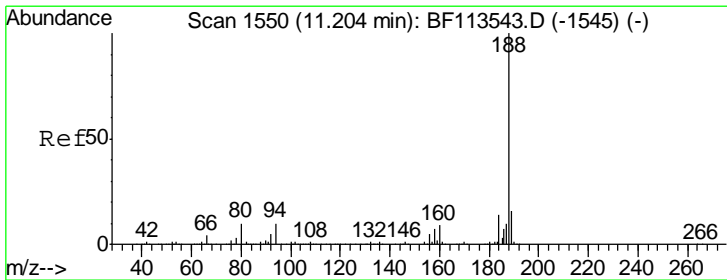
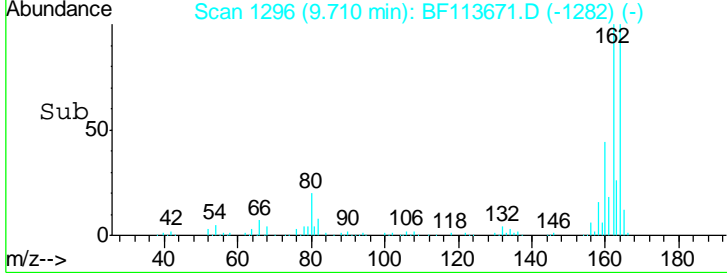
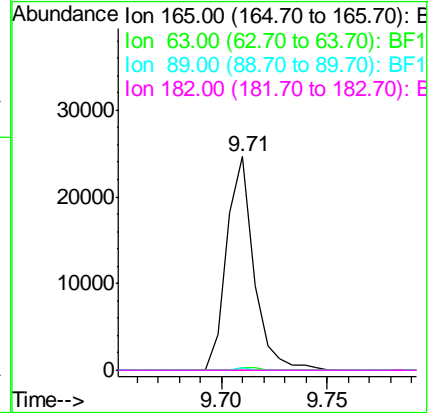
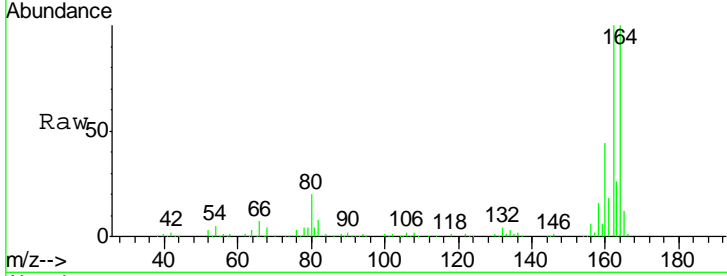




#57
 2,4-Dinitrotoluene
 Concen: 6.250 ng
 RT: 9.71 min Scan# 1296
 Delta R.T. -0.22 min
 Lab File: BF113671.D
 Acq: 9 Apr 2019 19:57

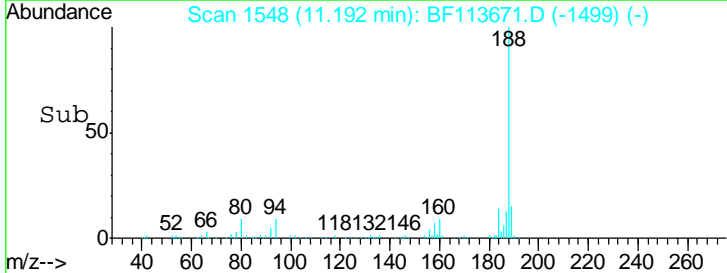
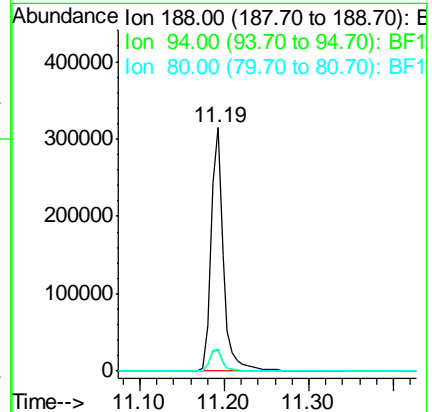
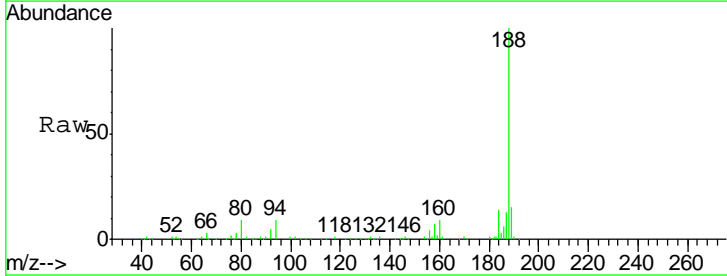
Instrument :
 BNA_F
 ClientSampled :

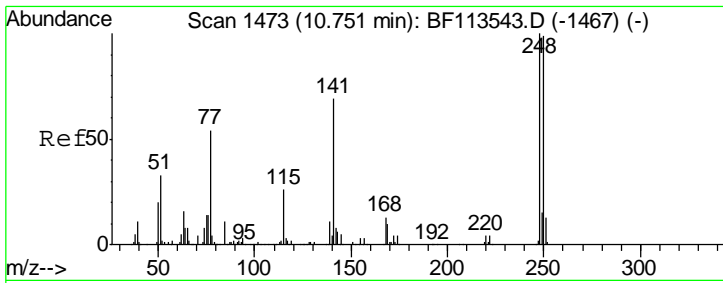
Tgt Ion	Resp	Lower	Upper
165	100		
63	1.3	37.5	56.3#
89	1.4	57.4	86.2#
182	0.0	2.0	3.0#



#64
 Phenanthrene-d10
 Concen: 20.000 ng
 RT: 11.19 min Scan# 1548
 Delta R.T. -0.01 min
 Lab File: BF113671.D
 Acq: 9 Apr 2019 19:57

Tgt Ion	Resp	Lower	Upper
188	100		
94	8.6	7.0	10.6
80	8.9	7.7	11.5

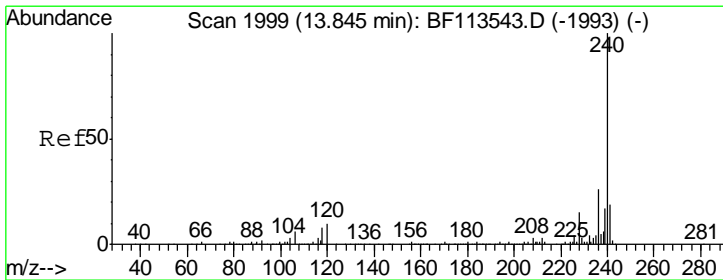
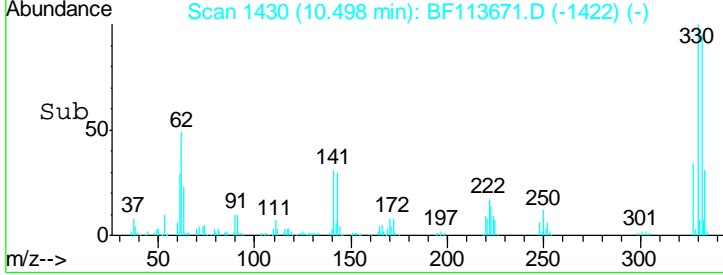
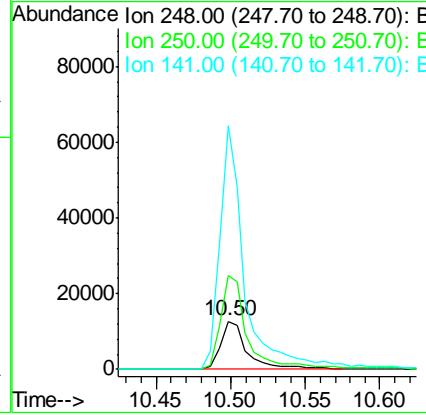
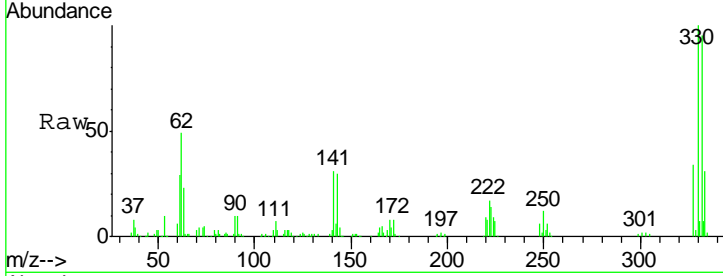




#67
 4-Bromophenyl-phenylether
 Concen: 4.395 ng
 RT: 10.50 min Scan# 1430
 Delta R.T. -0.25 min
 Lab File: BF113671.D
 Acq: 9 Apr 2019 19:57

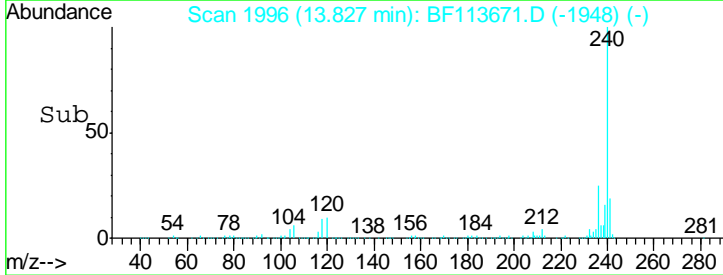
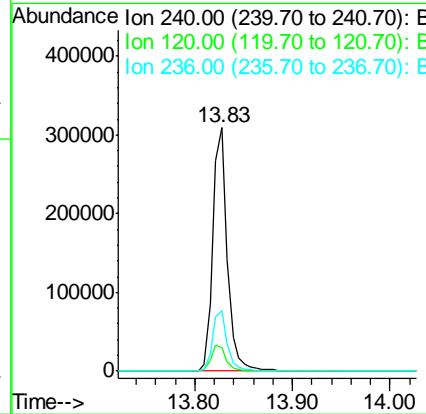
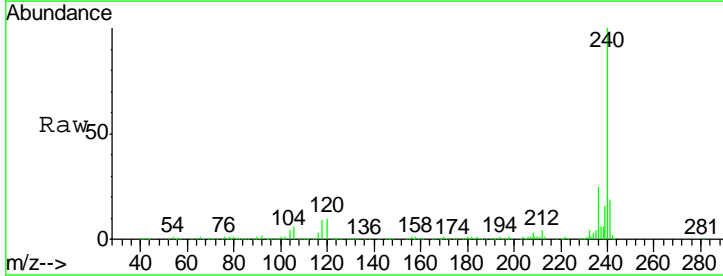
Instrument :
 BNA_F
 ClientSampled :

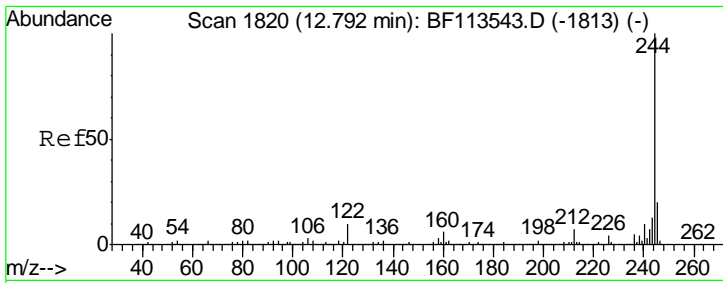
Tgt Ion	Resp	Lower	Upper
248	15643		
250	194.7	78.3	117.5#
141	505.7	56.2	84.4#



#76
 Chrysene-d12
 Concen: 20.000 ng
 RT: 13.83 min Scan# 1996
 Delta R.T. -0.02 min
 Lab File: BF113671.D
 Acq: 9 Apr 2019 19:57

Tgt Ion	Resp	Lower	Upper
240	318967		
240	100		
120	9.8	8.8	13.2
236	24.9	20.9	31.3



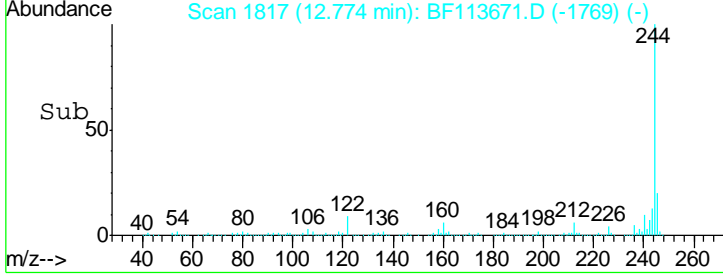
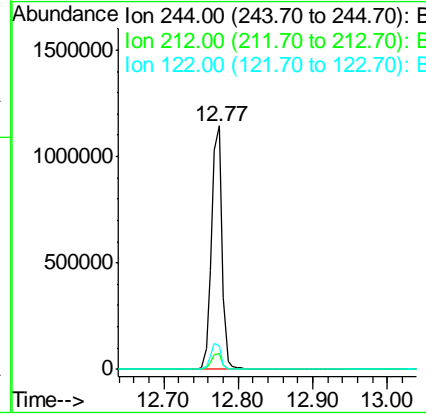
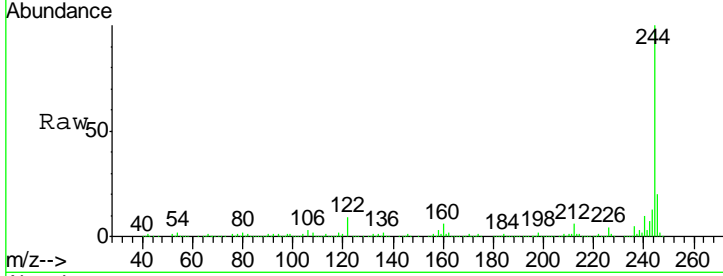


#79
 Terphenyl-d14
 Concen: 71.542 ng
 RT: 12.77 min Scan# 1817
 Delta R.T. -0.02 min
 Lab File: BF113671.D
 Acq: 9 Apr 2019 19:57

Instrument :
 BNA_F
 ClientSampled :

Tgt Ion: 244 Resp: 1120797

Ion	Ratio	Lower	Upper
244	100		
212	6.4	5.5	8.3
122	9.4	8.6	13.0



#87
 Perylene-d12
 Concen: 20.000 ng
 RT: 15.23 min Scan# 2235
 Delta R.T. -0.02 min
 Lab File: BF113671.D
 Acq: 9 Apr 2019 19:57

Tgt Ion: 264 Resp: 297302

Ion	Ratio	Lower	Upper
264	100		
260	24.0	19.1	28.7
265	22.0	17.1	25.7

