

Data Path : Z:\HPCHEM1\BNA F\DATA\BF041117\  
 Data File : BF094360.D  
 Acq On : 11 Apr 2017 19:51  
 Operator : SJ/MA  
 Sample : I2620-11  
 Misc :  
 ALS Vial : 9 Sample Multiplier: 1

Instrument :  
 BNA\_F  
 ClientSampleId :  
 SOUTH-MAHWAH

Integration Parameters: rteint.p  
 Integrator: RTE  
 Smoothing : ON  
 Sampling : 1  
 Start Thrs: 0.2  
 Stop Thrs : 0

Filtering: 5  
 Min Area: 3 % of largest Peak  
 Max Peaks: 100  
 Peak Location: TOP

If leading or trailing edge < 100 prefer < Baseline drop else tangent >  
 Peak separation: 5

Method : Z:\HPCHEM1\BNA F\METHODS\8270-BF032217.M  
 Title : ASP BNA STANDARDS FOR 5 POINT CALIBRATION

Signal : TIC

peak #	R.T. min	first scan	max scan	last scan	PK TY	peak height	corr. area	corr. % max.	% of total
1	2.040	15	26	32	rVB2	165413	344417	6.07%	0.340%
2	3.457	263	267	275	rVB	336194	383037	6.75%	0.378%
3	3.963	349	353	363	rBV	383765	509328	8.98%	0.503%
4	4.381	419	424	427	rBV	3538916	3516032	61.98%	3.472%
5	4.645	466	469	475	rVB2	311387	361974	6.38%	0.357%
6	4.869	504	507	513	rBV	95466	96511	1.70%	0.095%
7	5.463	601	608	613	rVB2	3105244	4276053	75.37%	4.222%
8	5.581	623	628	631	rBV	3731636	4014345	70.76%	3.964%
9	5.657	637	641	644	rVB	287343	248685	4.38%	0.246%
10	5.687	644	646	652	rVB	103018	95757	1.69%	0.095%
11	5.822	665	669	673	rBV	906390	831867	14.66%	0.821%
12	6.004	695	700	703	rBV	3205828	3299666	58.16%	3.258%
13	6.292	742	749	753	rBV	429195	431868	7.61%	0.426%
14	6.481	774	781	784	rBV	2178833	2769923	48.83%	2.735%
15	6.545	788	792	795	rVV	195016	177441	3.13%	0.175%
16	6.587	795	799	802	rVB	102469	91548	1.61%	0.090%
17	6.928	854	857	864	rVB	129646	140016	2.47%	0.138%
18	7.122	886	890	895	rBV	112080	118649	2.09%	0.117%
19	7.281	912	917	920	rBV2	70287	69712	1.23%	0.069%
20	7.328	920	925	927	rVV	1140271	1111974	19.60%	1.098%
21	7.351	927	929	932	rVV	106128	93762	1.65%	0.093%
22	7.398	932	937	941	rVB	63201	71551	1.26%	0.071%
23	7.804	999	1006	1009	rBV	87334	102702	1.81%	0.101%
24	7.886	1015	1020	1027	rBV3	130497	176522	3.11%	0.174%
25	8.039	1042	1046	1050	rVB2	68763	95045	1.68%	0.094%
26	8.092	1052	1055	1058	rBV3	60521	67062	1.18%	0.066%
27	8.498	1121	1124	1128	rBV3	76375	90131	1.59%	0.089%
28	8.539	1128	1131	1135	rBV3	133905	211906	3.74%	0.209%
29	8.657	1144	1151	1154	rBV	3653738	4329037	76.31%	4.275%
30	8.745	1162	1166	1171	rBV2	319510	416475	7.34%	0.411%
31	8.798	1172	1175	1178	rBV4	101795	144353	2.54%	0.143%
32	8.875	1185	1188	1191	rVB3	141387	147970	2.61%	0.146%
33	8.969	1201	1204	1206	rBV3	105259	119843	2.11%	0.118%
34	9.063	1217	1220	1222	rBV2	255225	276098	4.87%	0.273%

Data Path : Z:\HPCHEM1\BNA F\DATA\BF041117\  
 Data File : BF094360.D  
 Acq On : 11 Apr 2017 19:51  
 Operator : SJ/MA  
 Sample : I2620-11  
 Misc :  
 ALS Vial : 9 Sample Multiplier: 1

Instrument :  
 BNA\_F  
 Client Sampled :  
 SOUTH-MAHWAH

Integration Parameters: rteint.p  
 Integrator: RTE  
 Smoothing : ON  
 Sampling : 1  
 Start Thrs: 0.2  
 Stop Thrs : 0

Filtering: 5  
 Min Area: 3 % of largest Peak  
 Max Peaks: 100  
 Peak Location: TOP

If leading or trailing edge < 100 prefer < Baseline drop else tangent >  
 Peak separation: 5

Method : Z:\HPCHEM1\BNA F\METHODS\8270-BF032217.M  
 Title : ASP BNA STANDARDS FOR 5 POINT CALIBRATION

35	9.122	1226	1230	1232	rVV	1239747	1259116	22.19%	1.243%
36	9.151	1232	1235	1237	rVV	353912	391375	6.90%	0.386%
37	9.192	1239	1242	1248	rVB2	429760	597339	10.53%	0.590%
38	9.310	1259	1262	1266	rBV2	613764	843696	14.87%	0.833%
39	9.369	1267	1272	1276	rVB	1622434	2015546	35.53%	1.990%
40	9.416	1277	1280	1283	rVV3	301962	358335	6.32%	0.354%
41	9.469	1283	1289	1295	rBV3	1252640	2298003	40.51%	2.269%
42	9.533	1297	1300	1302	rBV2	527673	482309	8.50%	0.476%
43	9.610	1310	1313	1316	rBV2	285184	378388	6.67%	0.374%
44	9.692	1323	1327	1330	rVB	1442500	1405556	24.78%	1.388%
45	9.751	1334	1337	1340	rBV	884619	934211	16.47%	0.922%
46	9.886	1356	1360	1367	rBV2	1026694	1996967	35.20%	1.972%
47	9.945	1367	1370	1373	rVV2	508606	600708	10.59%	0.593%
48	9.986	1374	1377	1381	rBV	1548577	1645744	29.01%	1.625%
49	10.269	1422	1425	1427	rBV	1002039	1107635	19.52%	1.094%
50	10.292	1427	1429	1432	rVB	1731863	1548890	27.30%	1.529%
51	10.357	1437	1440	1444	rVB	1347093	1647098	29.03%	1.626%
52	10.498	1462	1464	1466	rVB	777910	580382	10.23%	0.573%
53	10.722	1500	1502	1507	rVB	845305	819160	14.44%	0.809%
54	10.839	1519	1522	1524	rBV	1442907	1481423	26.11%	1.463%
55	10.869	1524	1527	1531	rVB	1829156	1796895	31.67%	1.774%
56	10.945	1537	1540	1545	rVB	1770900	1923508	33.91%	1.899%
57	11.080	1560	1563	1570	rBV	1463325	1892855	33.37%	1.869%
58	11.304	1597	1601	1608	rVB2	2601415	3323210	58.58%	3.281%
59	11.392	1610	1616	1619	rVV	3164541	5178249	91.28%	5.113%
60	11.427	1619	1622	1625	rVB	2997371	3474780	61.25%	3.431%
61	11.504	1631	1635	1638	rVB	2999030	3669252	64.68%	3.623%
62	11.645	1654	1659	1664	rVB	2932301	4579067	80.72%	4.522%
63	11.857	1690	1695	1698	rBV	3656168	5673098	100.00%	5.602%
64	11.916	1698	1705	1708	rVV	2434670	5236942	92.31%	5.171%
65	11.951	1708	1711	1717	rVB	2444534	3026127	53.34%	2.988%
66	12.033	1721	1725	1727	rVB	2368777	2705166	47.68%	2.671%
67	12.169	1743	1748	1750	rBV	2530947	3354541	59.13%	3.312%
68	12.374	1778	1783	1786	rVB	2971660	3815801	67.26%	3.768%

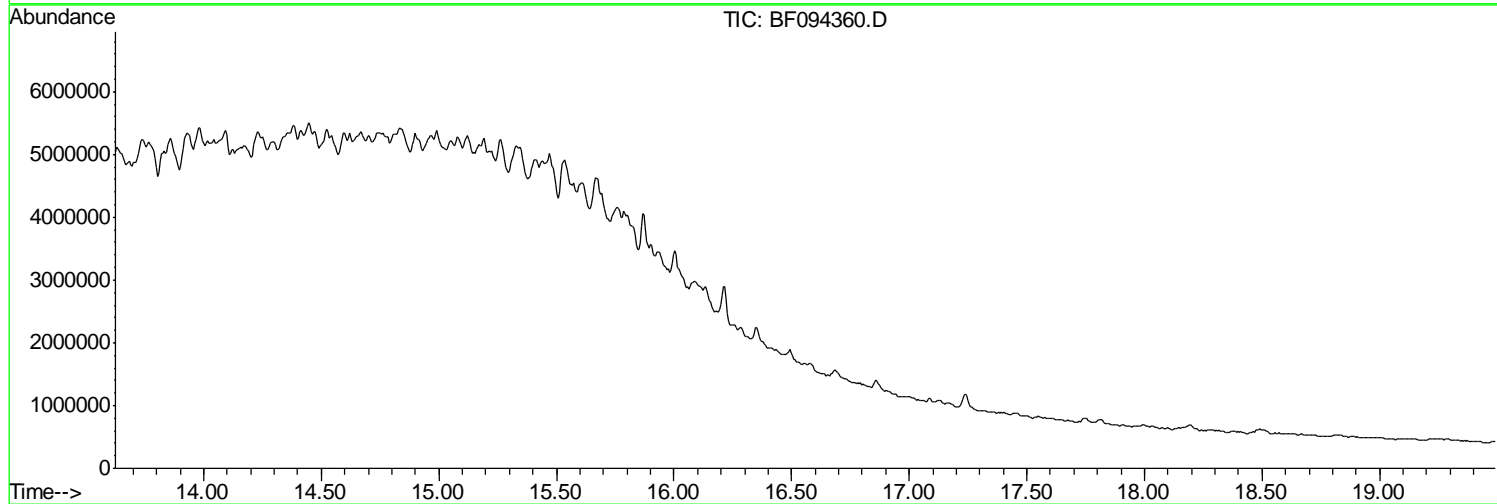
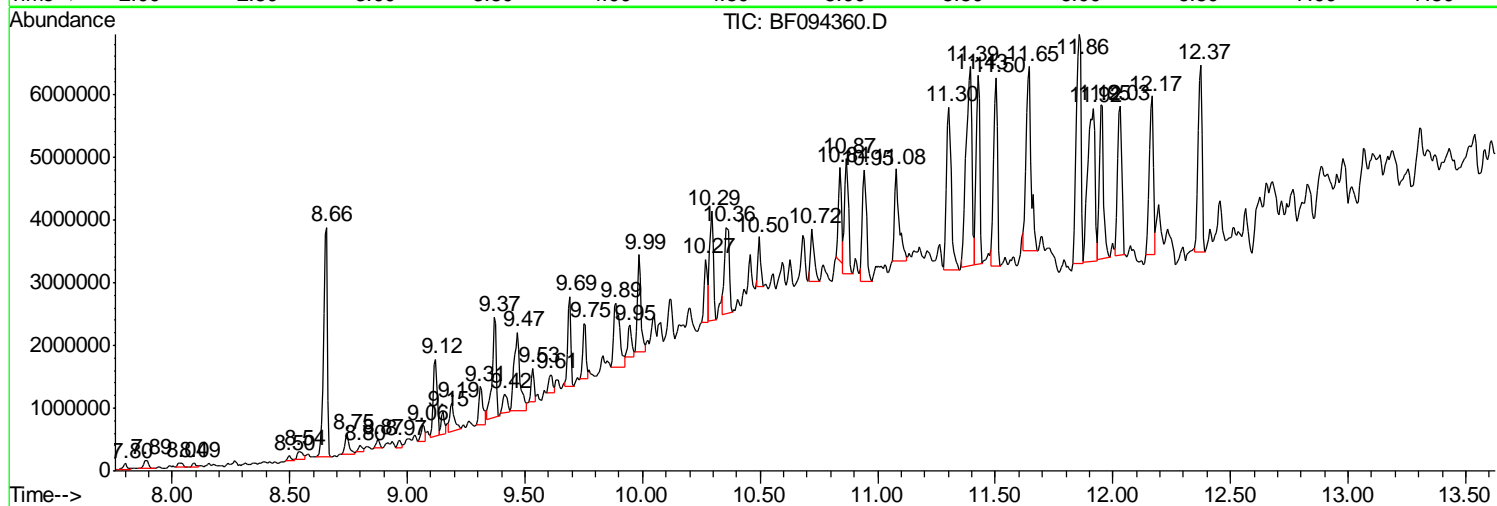
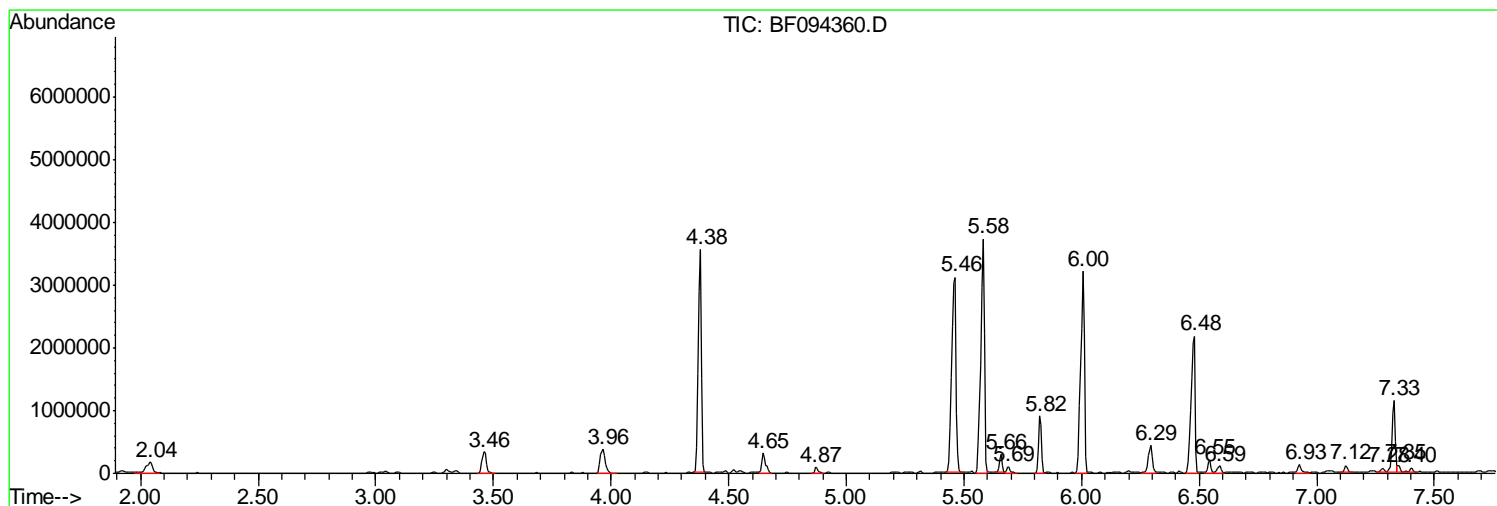
Sum of corrected areas: 101272632

Data Path : Z:\HPCHEM1\BNA F\DATA\BF041117\  
 Data File : BF094360.D  
 Acq On : 11 Apr 2017 19:51  
 Operator : SJ/MA  
 Sample : I2620-11  
 Misc :  
 ALS Vial : 9 Sample Multiplier: 1

**Instrument :**  
 BNA\_F  
**ClientSampleId :**  
 SOUTH-MAHWAH

Quant Method : Z:\HPCHEM1\BNA F\METHODS\8270-BF032217.M  
 Quant Title : ASP BNA STANDARDS FOR 5 POINT CALIBRATION

TIC Library : C:\DATABASE\NIST02.L  
 TIC Integration Parameters: LSCINT.P



Data Path : Z:\HPCHEM1\BNA F\DATA\BF041117\  
 Data File : BF094360.D  
 Acq On : 11 Apr 2017 19:51  
 Operator : SJ/MA  
 Sample : I2620-11  
 Misc :  
 ALS Vial : 9 Sample Multiplier: 1

Instrument :  
 BNA\_F  
 ClientSampleId :  
 SOUTH-MAHWAH

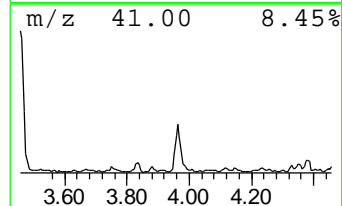
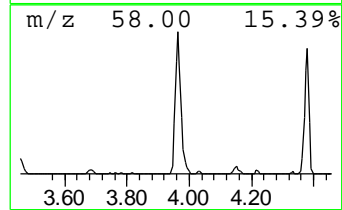
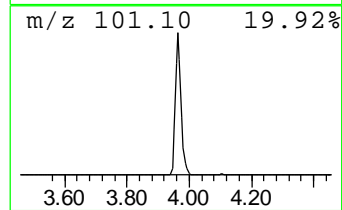
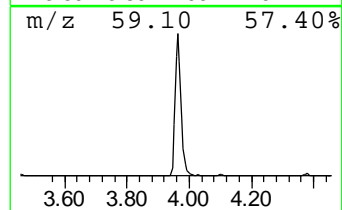
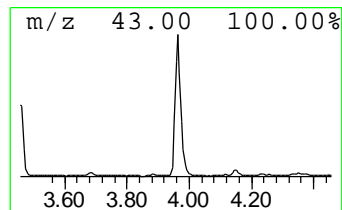
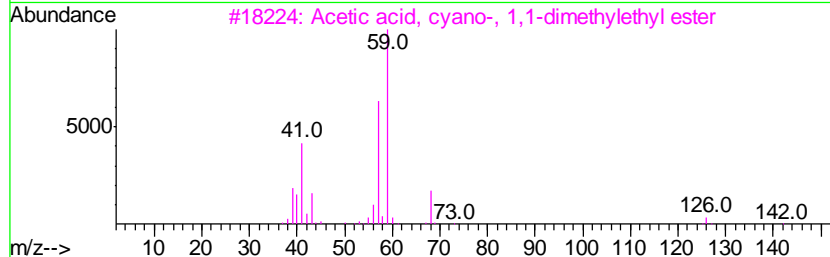
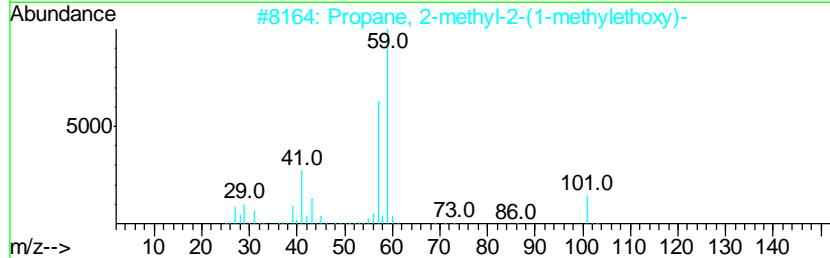
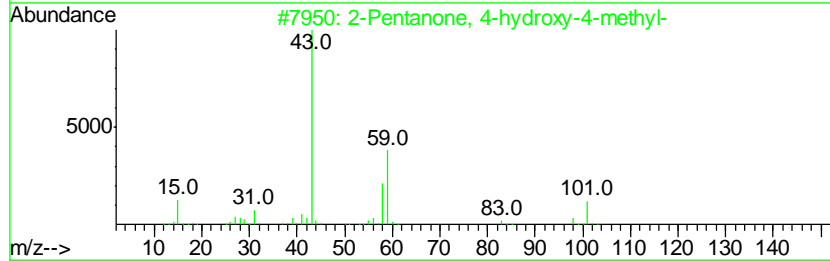
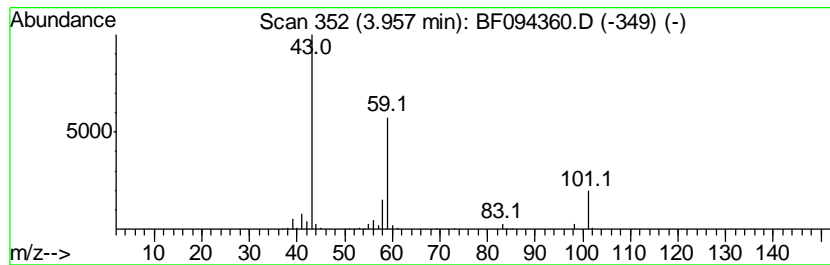
Quant Method : Z:\HPCHEM1\BNA F\METHODS\8270-BF032217.M  
 Quant Title : ASP BNA STANDARDS FOR 5 POINT CALIBRATION

TIC Library : C:\DATABASE\NIST02.L  
 TIC Integration Parameters: LSCINT.P

\*\*\*\*\*  
 Peak Number 1 2-Pentanone, 4-hydroxy-4-me... Concentration Rank 18

R.T.	EstConc	Area	Relative to ISTD	R.T.
3.96	12.25 ng	509328	1,4-Dichlorobenzene-d4	5.82

Hit#	of	Tentative ID	MW	MolForm	CAS#	Qual
1	5	2-Pentanone, 4-hydroxy-4-methyl-	116	C6H12O2	000123-42-2	72
2		Propane, 2-methyl-2-(1-methyleth...	116	C7H16O	017348-59-3	23
3		Acetic acid, cyano-, 1,1-dimethy...	141	C7H11NO2	001116-98-9	17
4		Morpholine, 4-methyl-	101	C5H11NO	000109-02-4	9
5		Butane, 1-ethoxy-	102	C6H14O	000628-81-9	9



Data Path : Z:\HPCHEM1\BNA F\DATA\BF041117\  
 Data File : BF094360.D  
 Acq On : 11 Apr 2017 19:51  
 Operator : SJ/MA  
 Sample : I2620-11  
 Misc :  
 ALS Vial : 9 Sample Multiplier: 1

Instrument :  
 BNA\_F  
 ClientSampleId :  
 SOUTH-MAHWAH

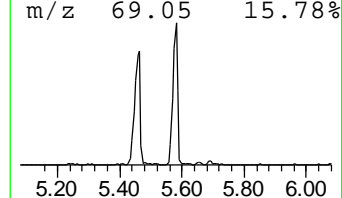
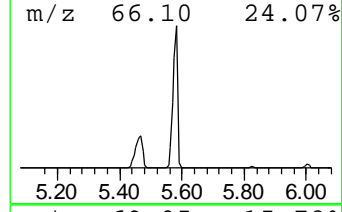
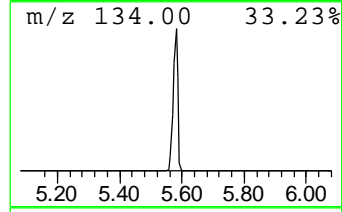
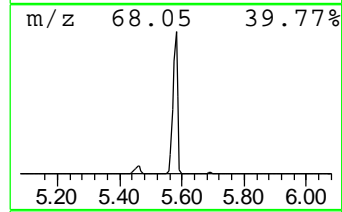
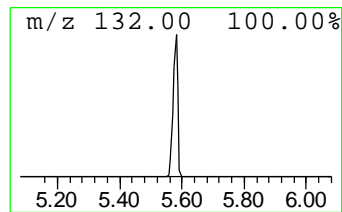
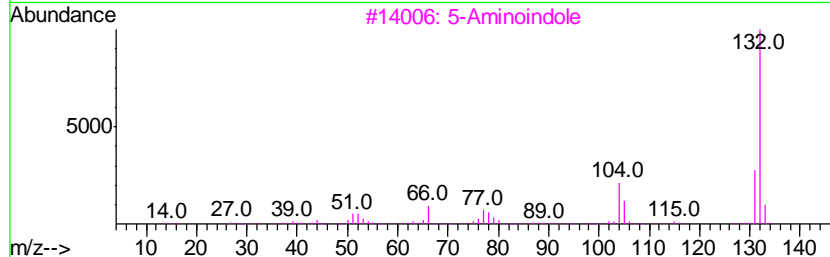
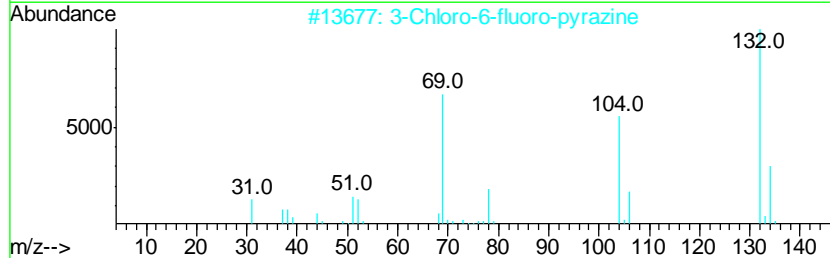
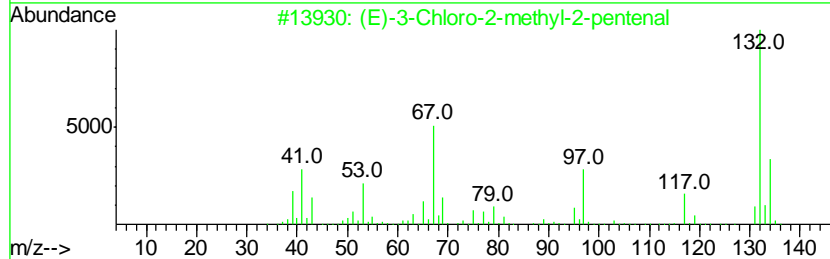
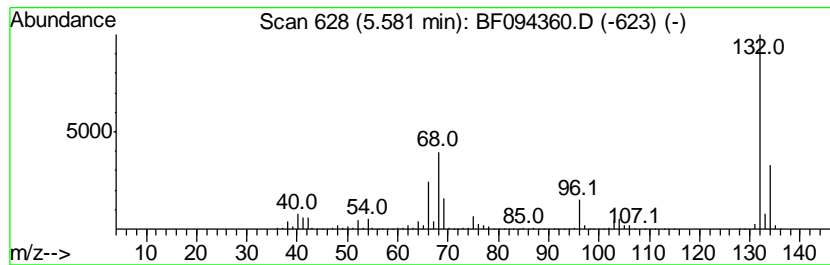
Quant Method : Z:\HPCHEM1\BNA F\METHODS\8270-BF032217.M  
 Quant Title : ASP BNA STANDARDS FOR 5 POINT CALIBRATION

TIC Library : C:\DATABASE\NIST02.L  
 TIC Integration Parameters: LSCINT.P

\*\*\*\*\*  
 Peak Number 2 unknown5.58 Concentration Rank 1

R.T.	EstConc	Area	Relative to ISTD	R.T.
5.58	96.51 ng	4014350	1,4-Dichlorobenzene-d4	5.82

Hit#	of	Tentative ID	MW	MolForm	CAS#	Qual
1	5	(E)-3-Chloro-2-methyl-2-pentenal	132	C6H9ClO	031357-76-3	16
2		3-Chloro-6-fluoro-pyrazine	132	C4H2ClFN2	1000146-10-7	16
3		5-Aminoindole	132	C8H8N2	005192-03-0	12
4		Tranylcypromine-propionyl	189	C12H15NO	1000123-86-3	10
5		Benzene, 1,3,5-trifluoro-	132	C6H3F3	000372-38-3	9



Data Path : Z:\HPCHEM1\BNA F\DATA\BF041117\  
 Data File : BF094360.D  
 Acq On : 11 Apr 2017 19:51  
 Operator : SJ/MA  
 Sample : I2620-11  
 Misc :  
 ALS Vial : 9 Sample Multiplier: 1

Instrument :  
 BNA\_F  
 ClientSampleID :  
 SOUTH-MAHWAH

Quant Method : Z:\HPCHEM1\BNA F\METHODS\8270-BF032217.M  
 Quant Title : ASP BNA STANDARDS FOR 5 POINT CALIBRATION

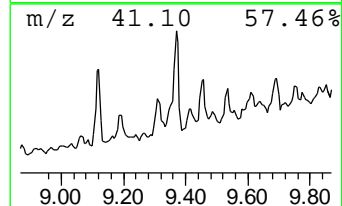
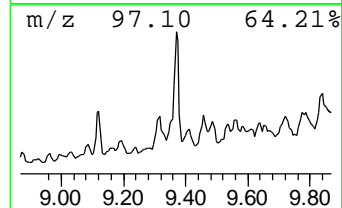
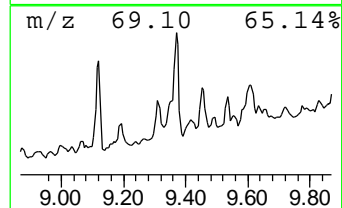
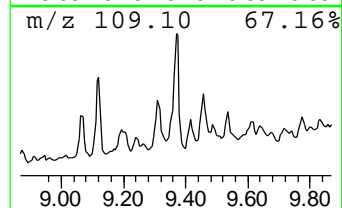
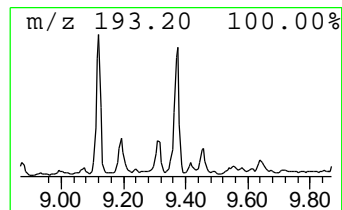
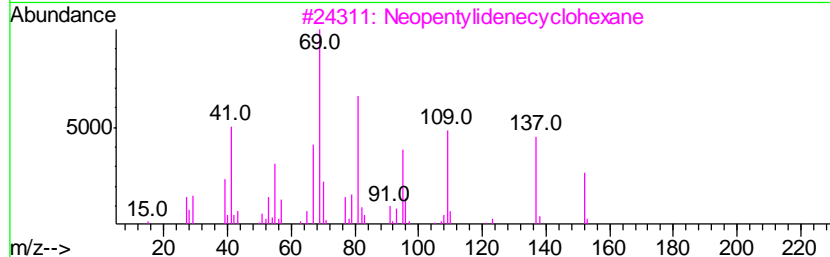
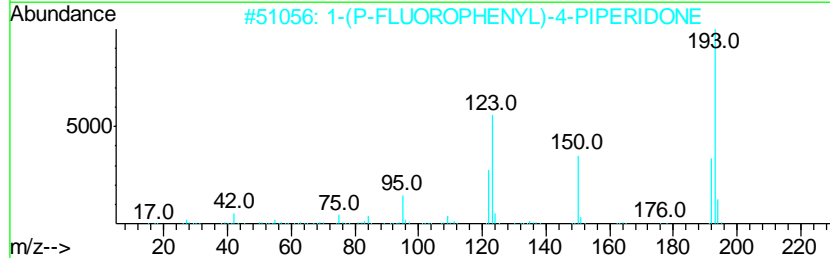
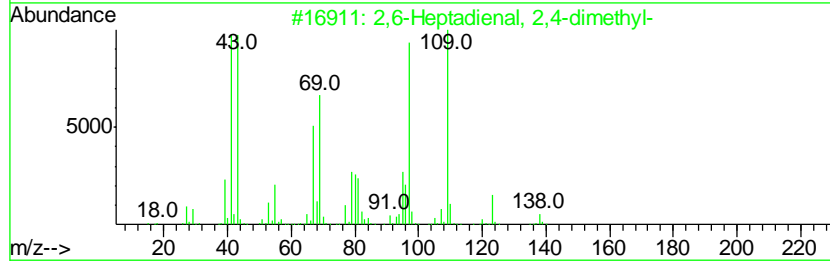
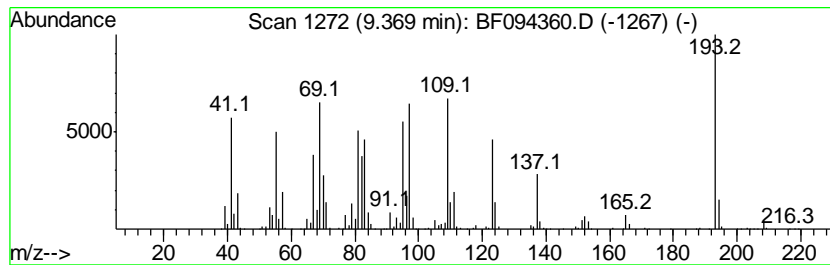
TIC Library : C:\DATABASE\NIST02.L  
 TIC Integration Parameters: LSCINT.P

\*\*\*\*\*  
 Peak Number 4 unknown9.37 Concentration Rank 12

R.T.	EstConc	Area	Relative to ISTD	R.T.
9.37	17.54 ng	201550	Acenaphthene-d10	9.47

Hit#	of	Tentative ID	MW	MolForm	CAS#	Qual
1	5	2,6-Heptadienal, 2,4-dimethyl-	138	C9H14O	085136-08-9	38
2		1-(P-FLUOROPHENYL)-4-PIPERIDONE	193	C11H12FNO	1000238-56-7	30
3		Neopentylidenecyclohexane	152	C11H20	039546-80-0	25
4		Bicyclo[2.2.1]heptane, 1,3,3-tri...	138	C10H18	006248-88-0	18
5		1,2,4,4-Tetramethylcyclopentene	124	C9H16	065378-76-9	15



Data Path : Z:\HPCHEM1\BNA F\DATA\BF041117\  
 Data File : BF094360.D  
 Acq On : 11 Apr 2017 19:51  
 Operator : SJ/MA  
 Sample : I2620-11  
 Misc :  
 ALS Vial : 9 Sample Multiplier: 1

Instrument :  
 BNA\_F  
 ClientSampleID :  
 SOUTH-MAHWAH

Quant Method : Z:\HPCHEM1\BNA F\METHODS\8270-BF032217.M  
 Quant Title : ASP BNA STANDARDS FOR 5 POINT CALIBRATION

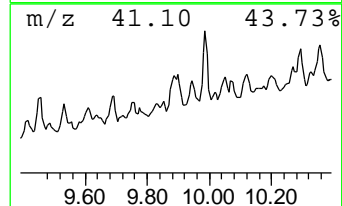
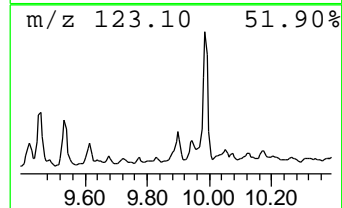
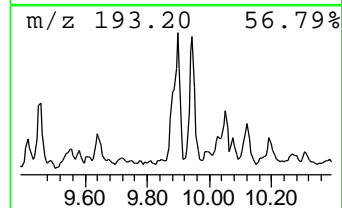
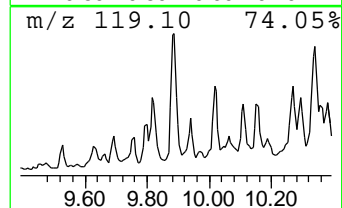
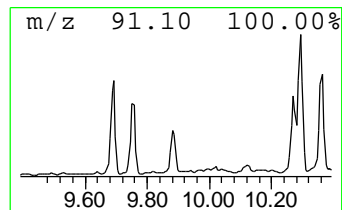
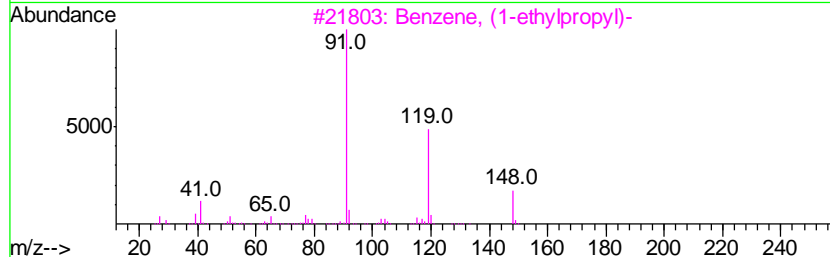
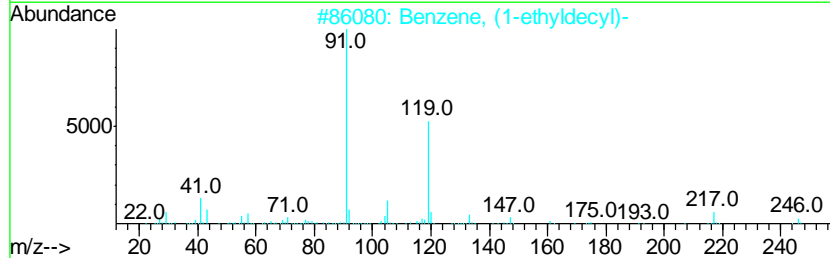
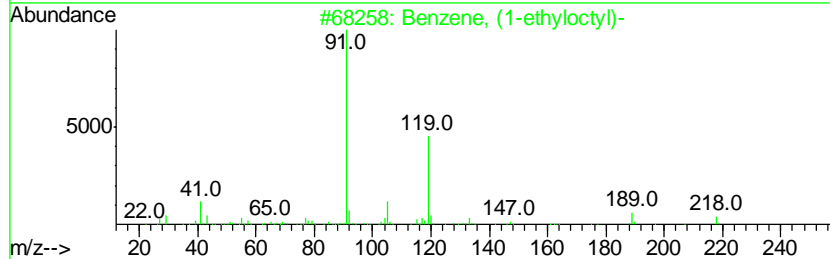
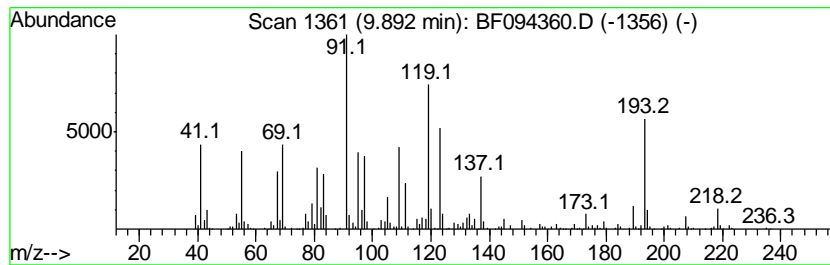
TIC Library : C:\DATABASE\NIST02.L  
 TIC Integration Parameters: LSCINT.P

\*\*\*\*\*  
 Peak Number 6 Benzene, (1-ethyloctyl)- Concentration Rank 13

R.T.	EstConc	Area	Relative to ISTD	R.T.
9.89	17.38 ng	1996970	Acenaphthene-d10	9.47

Hit#	of	Tentative ID	MW	MolForm	CAS#	Qual
1	5	Benzene, (1-ethyloctyl)-	218	C16H26	004621-36-7	95
2		Benzene, (1-ethyldecyl)-	246	C18H30	002400-00-2	50
3		Benzene, (1-ethylpropyl)-	148	C11H16	001196-58-3	47
4		Aziridine, 1-phenyl-	119	C8H9N	000696-18-4	38
5		(1-(Methylthio)propyl)benzene	166	C10H14S	022906-19-0	38



Data Path : Z:\HPCHEM1\BNA F\DATA\BF041117\  
 Data File : BF094360.D  
 Acq On : 11 Apr 2017 19:51  
 Operator : SJ/MA  
 Sample : I2620-11  
 Misc :  
 ALS Vial : 9 Sample Multiplier: 1

Instrument :  
 BNA\_F  
 ClientSampleId :  
 SOUTH-MAHWAH

Quant Method : Z:\HPCHEM1\BNA F\METHODS\8270-BF032217.M  
 Quant Title : ASP BNA STANDARDS FOR 5 POINT CALIBRATION

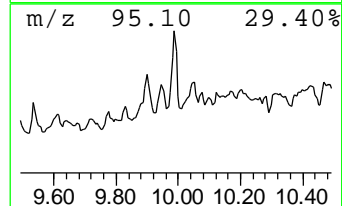
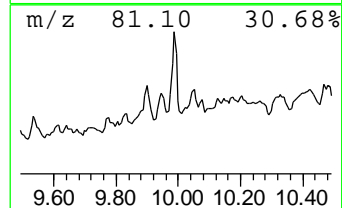
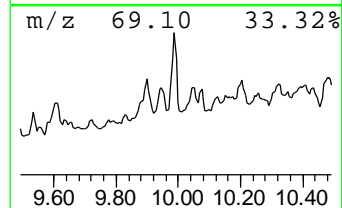
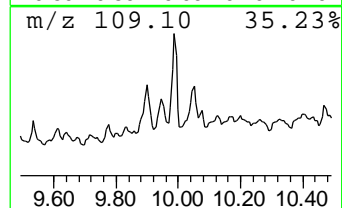
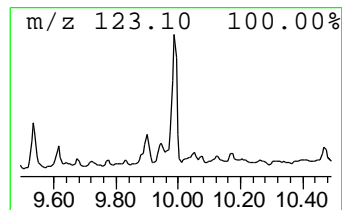
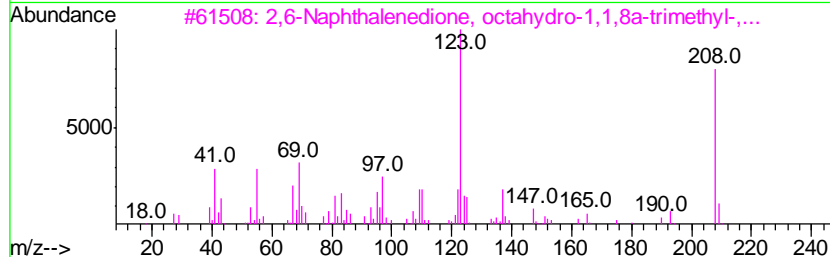
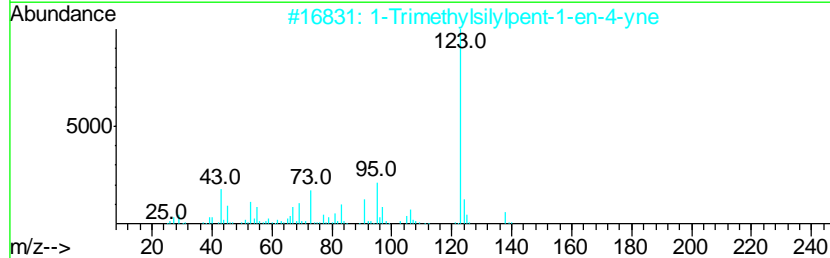
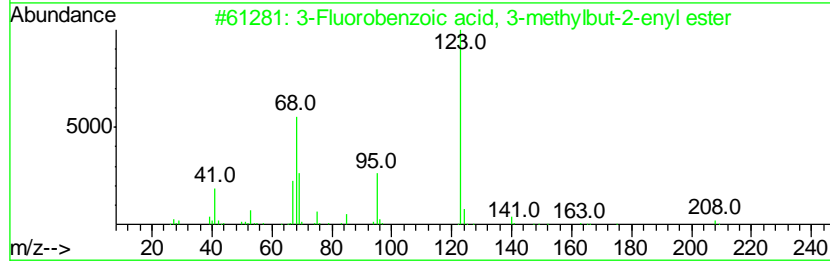
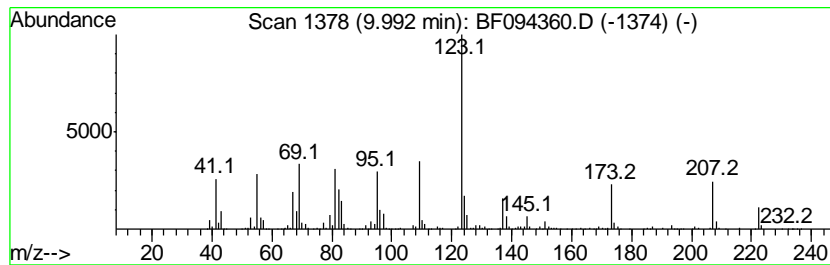
TIC Library : C:\DATABASE\NIST02.L  
 TIC Integration Parameters: LSCINT.P

\*\*\*\*\*  
 Peak Number 7 unknown9.99 Concentration Rank 16

R.T.	EstConc	Area	Relative to ISTD	R.T.
9.99	14.32 ng	1645740	Acenaphthene-d10	9.47

Hit#	of	Tentative ID	MW	MolForm	CAS#	Qual
1	5	3-Fluorobenzoic acid, 3-methylbu...	208	C12H13FO2	154559-38-3	46
2		1-Trimethylsilylpent-1-en-4-yne	138	C8H14Si	079516-25-9	43
3		2,6-Naphthalenedione, octahydro-...	208	C13H20O2	057289-16-4	40
4		Cyclohexene, 1,5,5-trimethyl-6-a...	180	C12H20O	211563-96-1	40
5		Cyclohexanone, 2,5-dimethyl-2-(1...	166	C11H18O	006711-26-8	38





Data Path : Z:\HPCHEM1\BNA F\DATA\BF041117\  
 Data File : BF094360.D  
 Acq On : 11 Apr 2017 19:51  
 Operator : SJ/MA  
 Sample : I2620-11  
 Misc :  
 ALS Vial : 9 Sample Multiplier: 1

Instrument :  
 BNA\_F  
 ClientSampleId :  
 SOUTH-MAHWAH

Quant Method : Z:\HPCHEM1\BNA F\METHODS\8270-BF032217.M  
 Quant Title : ASP BNA STANDARDS FOR 5 POINT CALIBRATION

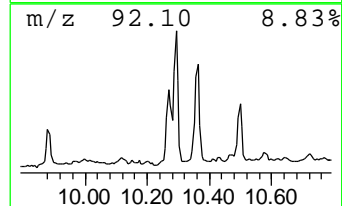
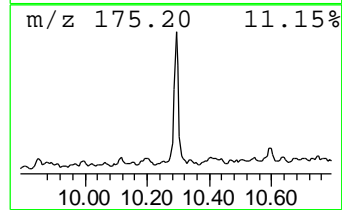
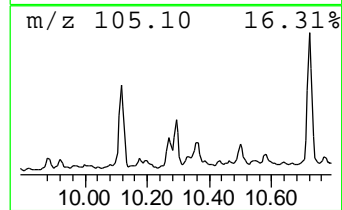
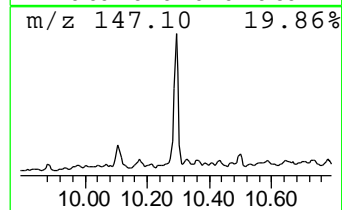
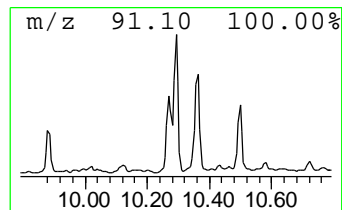
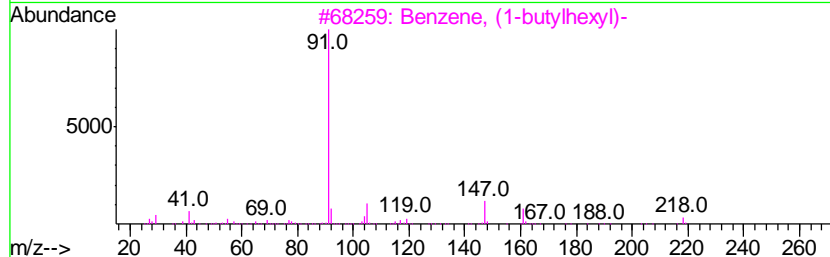
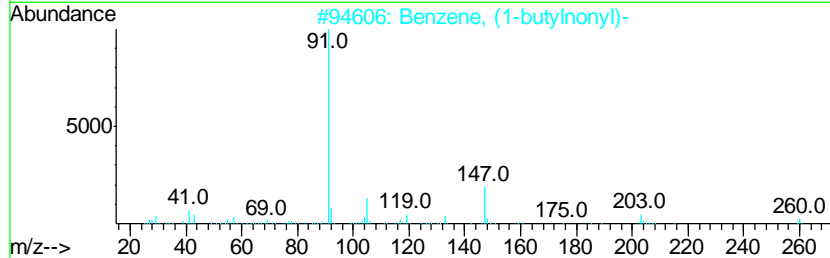
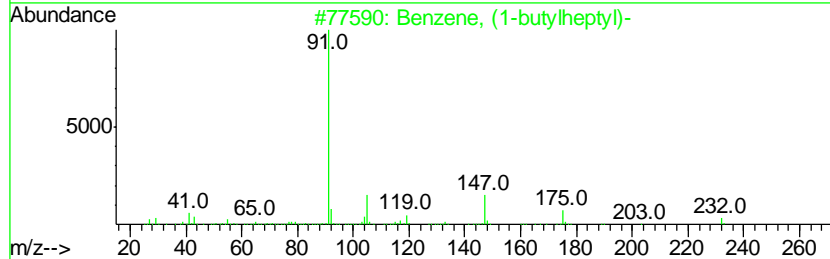
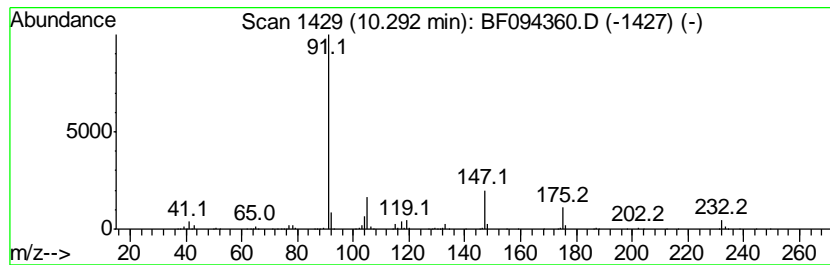
TIC Library : C:\DATABASE\NIST02.L  
 TIC Integration Parameters: LSCINT.P

\*\*\*\*\*  
 Peak Number 8 Benzene, (1-butylheptyl)- Concentration Rank 17

R.T.	EstConc	Area	Relative to ISTD	R.T.
10.29	13.48 ng	1548890	Acenaphthene-d10	9.47

Hit#	of	Tentative ID	MW	MolForm	CAS#	Qual
1	5	Benzene, (1-butylheptyl)-	232	C17H28	004537-15-9	97
2		Benzene, (1-butylonyl)-	260	C19H32	004534-50-3	50
3		Benzene, (1-butylhexyl)-	218	C16H26	004537-11-5	50
4		Benzene, (1-butylloctyl)-	246	C18H30	002719-63-3	45
5		Benzene, (1,1-diethylpropyl)-	176	C13H20	004170-84-7	43



Data Path : Z:\HPCHEM1\BNA F\DATA\BF041117\  
 Data File : BF094360.D  
 Acq On : 11 Apr 2017 19:51  
 Operator : SJ/MA  
 Sample : I2620-11  
 Misc :  
 ALS Vial : 9 Sample Multiplier: 1

Instrument :  
 BNA\_F  
 ClientSampled :  
 SOUTH-MAHWAH

Quant Method : Z:\HPCHEM1\BNA F\METHODS\8270-BF032217.M  
 Quant Title : ASP BNA STANDARDS FOR 5 POINT CALIBRATION

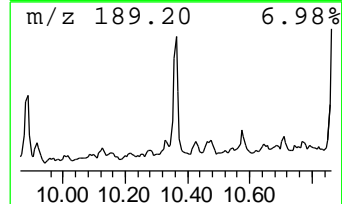
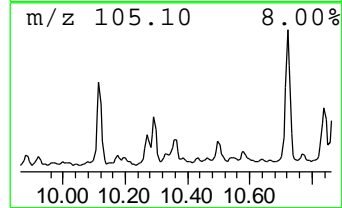
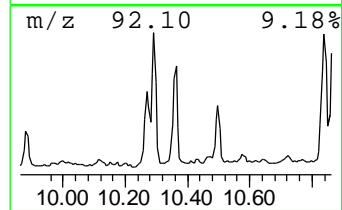
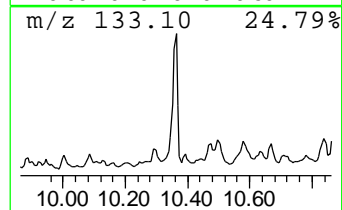
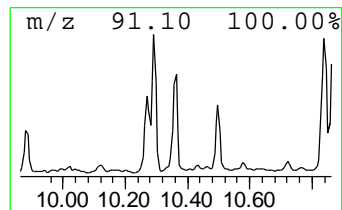
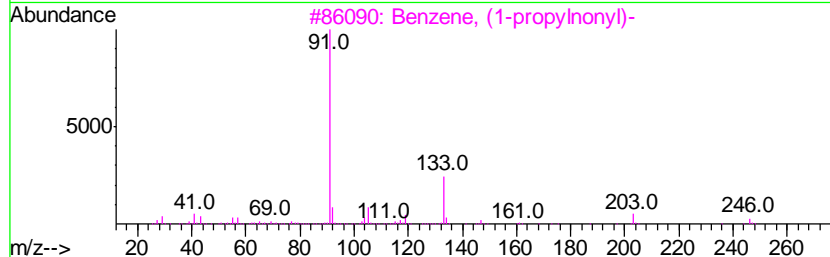
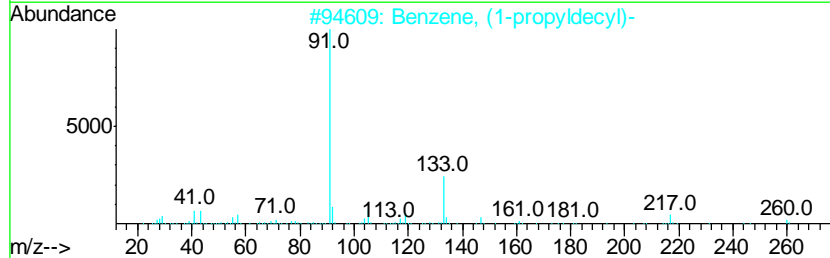
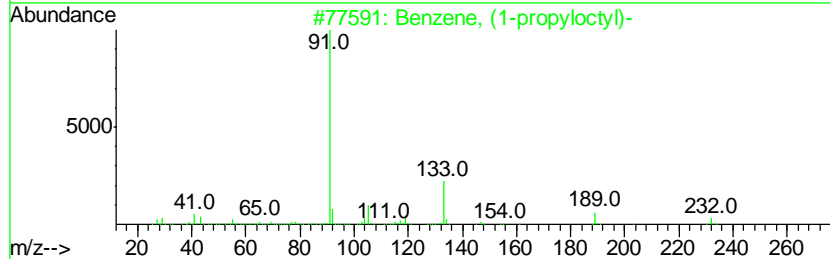
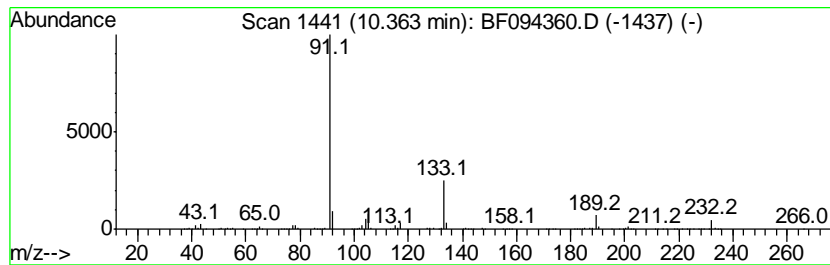
TIC Library : C:\DATABASE\NIST02.L  
 TIC Integration Parameters: LSCINT.P

\*\*\*\*\*  
 Peak Number 9 Benzene, (1-propyloctyl)- Concentration Rank 15

R.T.	EstConc	Area	Relative to ISTD	R.T.
10.36	14.34 ng	1647100	Acenaphthene-d10	9.47

Hit#	of	Tentative ID	MW	MolForm	CAS#	Qual
1	5	Benzene, (1-propyloctyl)-	232	C17H28	004536-86-1	94
2		Benzene, (1-propyldecyl)-	260	C19H32	004534-51-4	53
3		Benzene, (1-propylnonyl)-	246	C18H30	002719-64-4	53
4		Benzene, (1-propylheptyl)-	218	C16H26	004537-12-6	47
5		1-Imidazolidinecarboxylic acid, ...	290	C16H22N2O3	1000196-90-6	38



Data Path : Z:\HPCHEM1\BNA F\DATA\BF041117\  
 Data File : BF094360.D  
 Acq On : 11 Apr 2017 19:51  
 Operator : SJ/MA  
 Sample : I2620-11  
 Misc :  
 ALS Vial : 9 Sample Multiplier: 1

Instrument :  
 BNA\_F  
 ClientSampled :  
 SOUTH-MAHWAH

Quant Method : Z:\HPCHEM1\BNA F\METHODS\8270-BF032217.M  
 Quant Title : ASP BNA STANDARDS FOR 5 POINT CALIBRATION

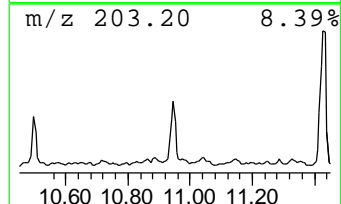
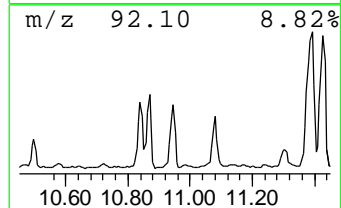
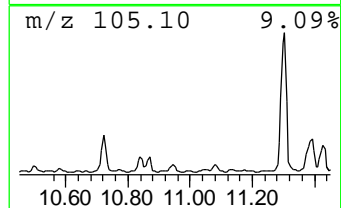
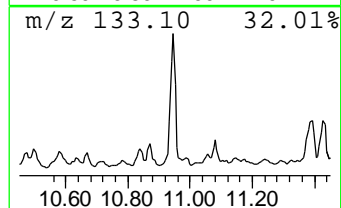
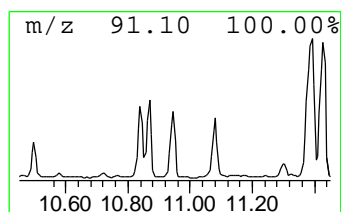
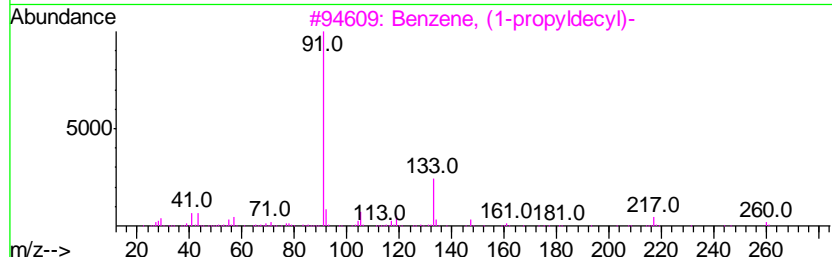
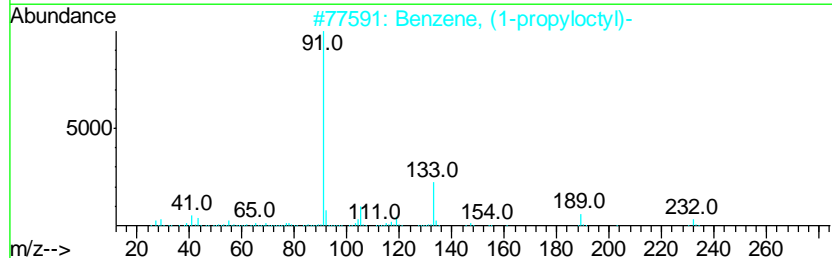
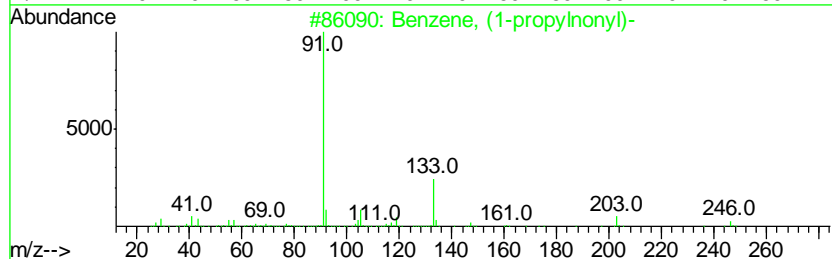
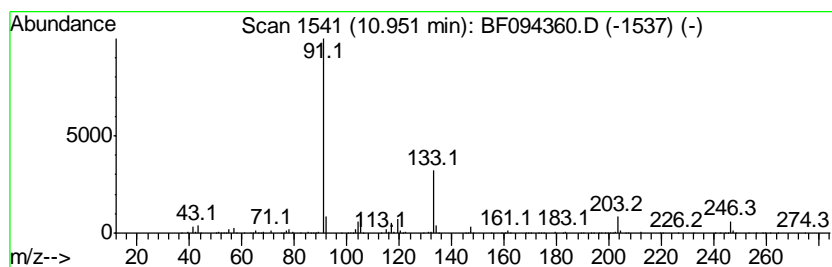
TIC Library : C:\DATABASE\NIST02.L  
 TIC Integration Parameters: LSCINT.P

\*\*\*\*\*  
 Peak Number 10 Benzene, (1-propylonyl)- Concentration Rank 20

R.T.	EstConc	Area	Relative to ISTD	R.T.
10.95	11.58 ng	1923510	Phenanthrene-d10	11.31

Hit#	of	Tentative ID	MW	MolForm	CAS#	Qual
1	5	Benzene, (1-propylonyl)-	246	C18H30	002719-64-4	96
2		Benzene, (1-propyloctyl)-	232	C17H28	004536-86-1	72
3		Benzene, (1-propyldecyl)-	260	C19H32	004534-51-4	56
4		Benzene, (1-propylheptyl)-	218	C16H26	004537-12-6	53
5		Benzene, (1-ethyldecyl)-	246	C18H30	002400-00-2	43



Data Path : Z:\HPCHEM1\BNA F\DATA\BF041117\  
 Data File : BF094360.D  
 Acq On : 11 Apr 2017 19:51  
 Operator : SJ/MA  
 Sample : I2620-11  
 Misc :  
 ALS Vial : 9 Sample Multiplier: 1

Instrument :  
 BNA\_F  
 ClientSampleId :  
 SOUTH-MAHWAH

Quant Method : Z:\HPCHEM1\BNA F\METHODS\8270-BF032217.M  
 Quant Title : ASP BNA STANDARDS FOR 5 POINT CALIBRATION

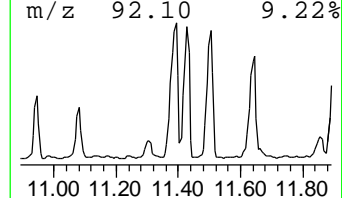
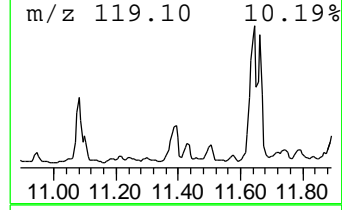
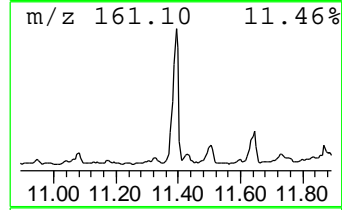
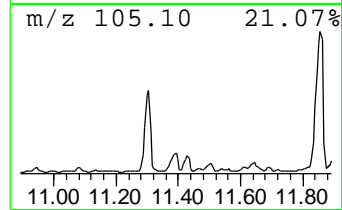
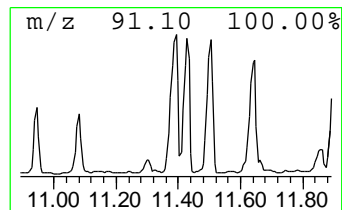
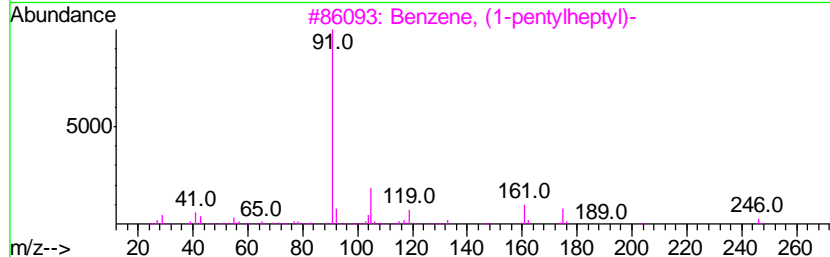
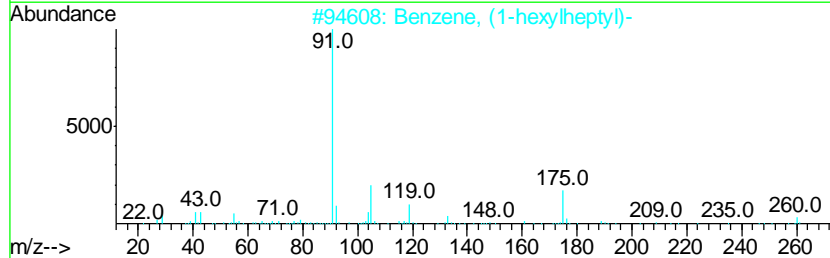
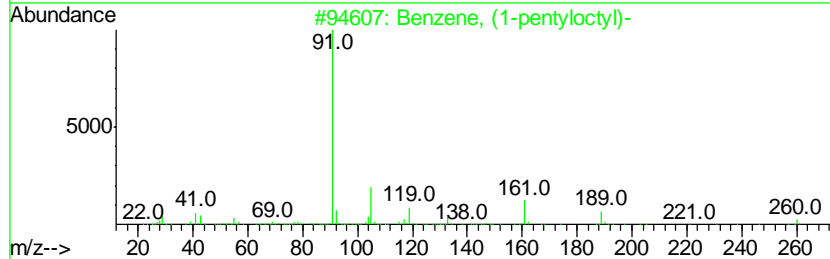
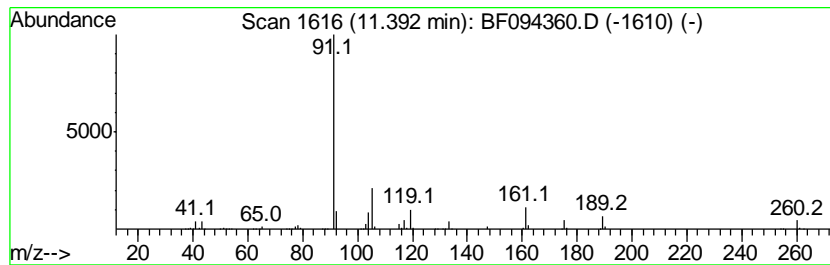
TIC Library : C:\DATABASE\NIST02.L  
 TIC Integration Parameters: LSCINT.P

\*\*\*\*\*  
 Peak Number 11 Benzene, (1-pentyloctyl)- Concentration Rank 5

R.T.	EstConc	Area	Relative to ISTD	R.T.
11.39	31.16 ng	5178250	Phenanthrene-d10	11.31

Hit#	of	Tentative ID	MW	MolForm	CAS#	Qual
1	5	Benzene, (1-pentyloctyl)-	260	C19H32	004534-49-0	94
2		Benzene, (1-hexylheptyl)-	260	C19H32	002400-01-3	74
3		Benzene, (1-pentylheptyl)-	246	C18H30	002719-62-2	59
4		Benzene, (1-propyloctyl)-	232	C17H28	004536-86-1	47
5		Benzene, (1-pentylhexyl)-	232	C17H28	004537-14-8	40



Data Path : Z:\HPCHEM1\BNA F\DATA\BF041117\  
 Data File : BF094360.D  
 Acq On : 11 Apr 2017 19:51  
 Operator : SJ/MA  
 Sample : I2620-11  
 Misc :  
 ALS Vial : 9 Sample Multiplier: 1

Instrument :  
 BNA\_F  
 ClientSampleId :  
 SOUTH-MAHWAH

Quant Method : Z:\HPCHEM1\BNA F\METHODS\8270-BF032217.M  
 Quant Title : ASP BNA STANDARDS FOR 5 POINT CALIBRATION

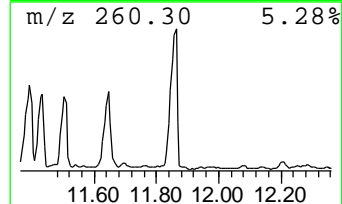
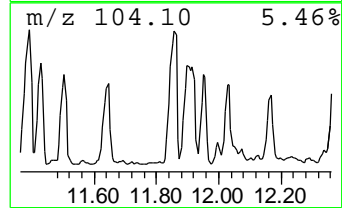
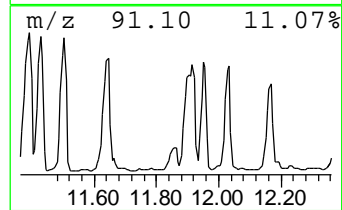
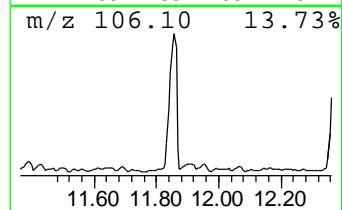
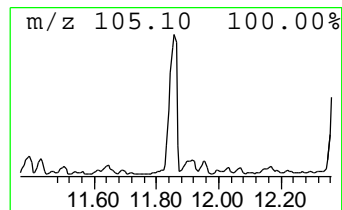
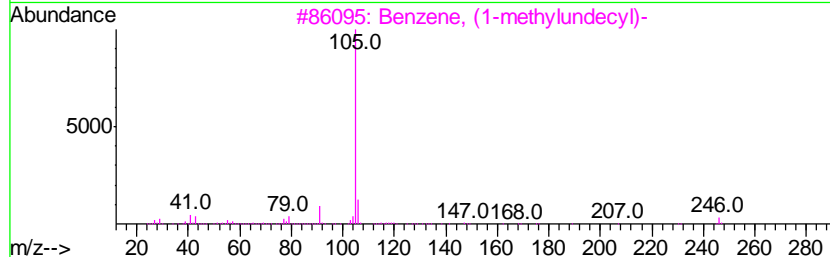
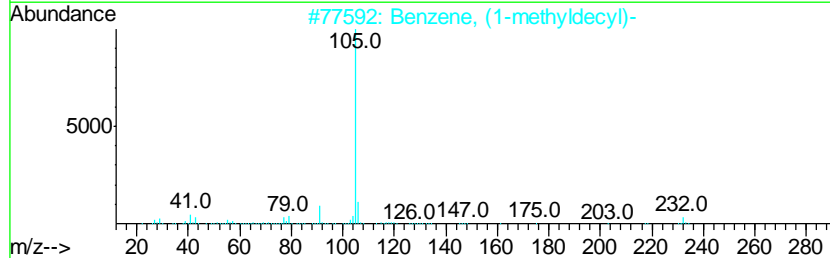
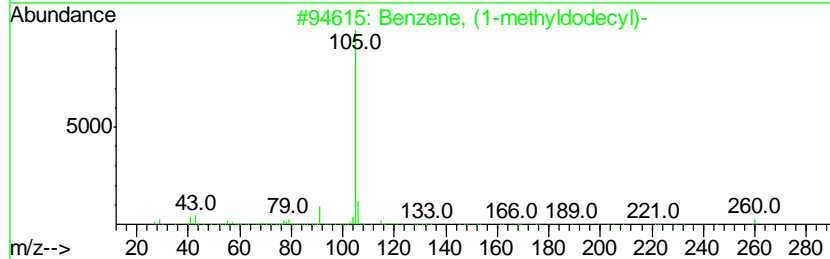
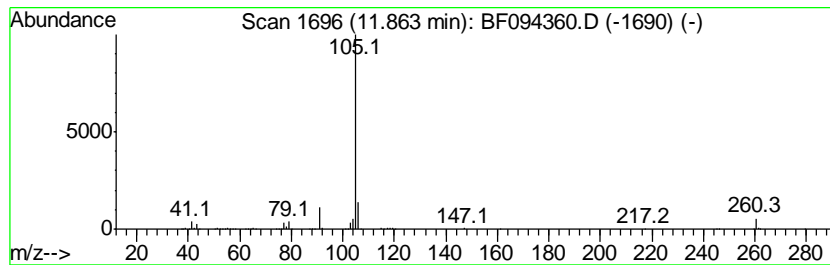
TIC Library : C:\DATABASE\NIST02.L  
 TIC Integration Parameters: LSCINT.P

\*\*\*\*\*  
 Peak Number 15 Benzene, (1-methyldodecyl)- Concentration Rank 3

R.T.	EstConc	Area	Relative to ISTD	R.T.
11.86	34.14 ng	5673100	Phenanthrene-d10	11.31

Hit#	of	Tentative ID	MW	MolForm	CAS#	Qual
1	5	Benzene, (1-methyldodecyl)-	260	C19H32	004534-53-6	90
2		Benzene, (1-methyldecyl)-	232	C17H28	004536-88-3	72
3		Benzene, (1-methylundecyl)-	246	C18H30	002719-61-1	72
4		Benzene, (1-methylnonyl)-	218	C16H26	004537-13-7	72
5		1-Hexene, 3-methyl-6-phenyl-4-(1...	294	C21H26O	1000194-52-4	45



Data Path : Z:\HPCHEM1\BNA F\DATA\BF041117\  
 Data File : BF094360.D  
 Acq On : 11 Apr 2017 19:51  
 Operator : SJ/MA  
 Sample : I2620-11  
 Misc :  
 ALS Vial : 9 Sample Multiplier: 1

Instrument :  
 BNA\_F  
 ClientSampleId :  
 SOUTH-MAHWAH

Quant Method : Z:\HPCHEM1\BNA F\METHODS\8270-BF032217.M  
 Quant Title : ASP BNA STANDARDS FOR 5 POINT CALIBRATION

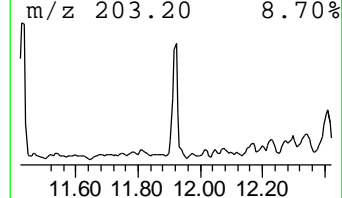
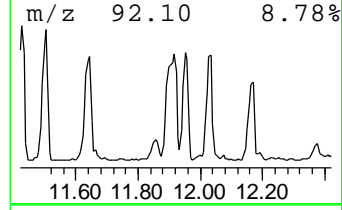
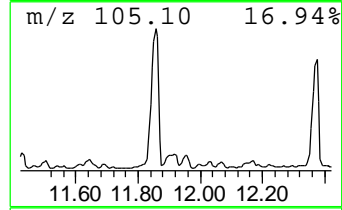
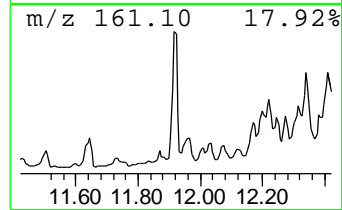
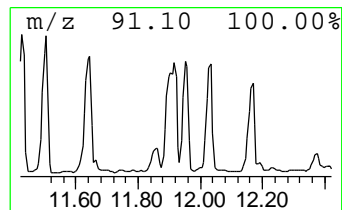
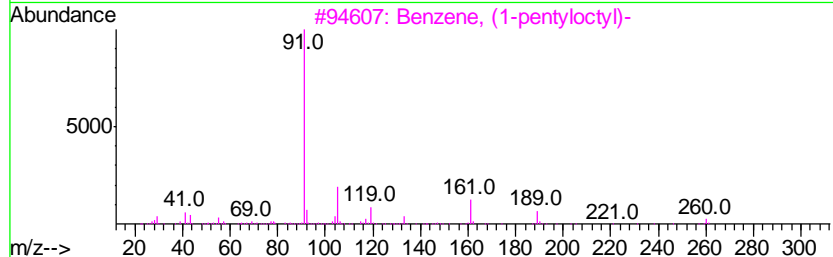
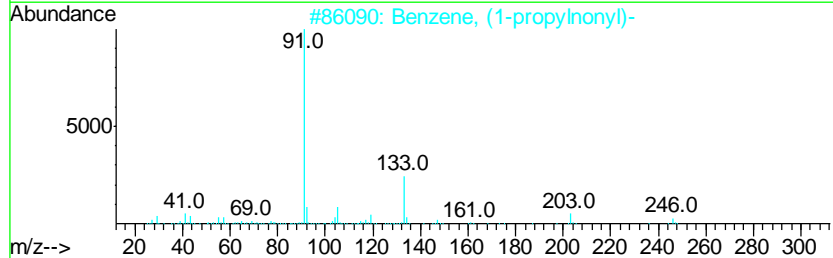
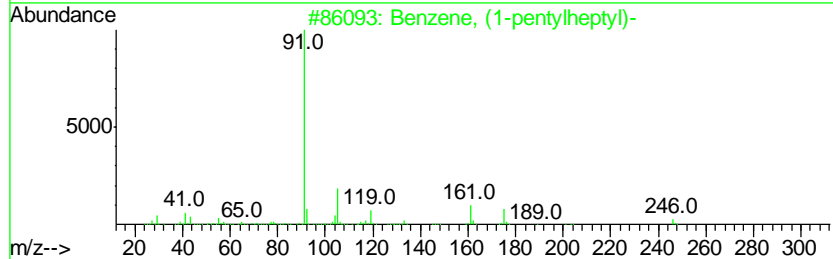
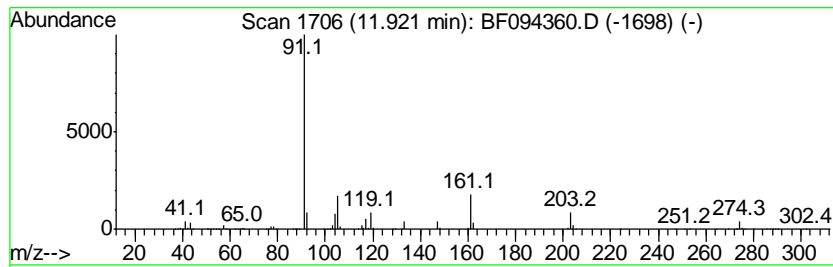
TIC Library : C:\DATABASE\NIST02.L  
 TIC Integration Parameters: LSCINT.P

\*\*\*\*\*  
 Peak Number 16 Benzene, (1-pentylheptyl)- Concentration Rank 4

R.T.	EstConc	Area	Relative to ISTD	R.T.
11.92	31.52 ng	5236940	Phenanthrene-d10	11.31

Hit#	of	Tentative ID	MW	MolForm	CAS#	Qual
1	5	Benzene, (1-pentylheptyl)-	246	C18H30	002719-62-2	59
2		Benzene, (1-propylnonyl)-	246	C18H30	002719-64-4	59
3		Benzene, (1-pentylloctyl)-	260	C19H32	004534-49-0	59
4		Benzene, (1-butylnonyl)-	260	C19H32	004534-50-3	53
5		Benzene, (1-pentylhexyl)-	232	C17H28	004537-14-8	53



Data Path : Z:\HPCHEM1\BNA F\DATA\BF041117\  
 Data File : BF094360.D  
 Acq On : 11 Apr 2017 19:51  
 Operator : SJ/MA  
 Sample : I2620-11  
 Misc :  
 ALS Vial : 9 Sample Multiplier: 1

Instrument :  
 BNA\_F  
 ClientSampled :  
 SOUTH-MAHWAH

Quant Method : Z:\HPCHEM1\BNA F\METHODS\8270-BF032217.M  
 Quant Title : ASP BNA STANDARDS FOR 5 POINT CALIBRATION

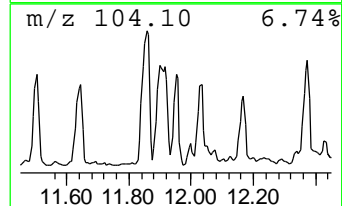
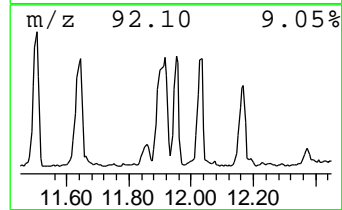
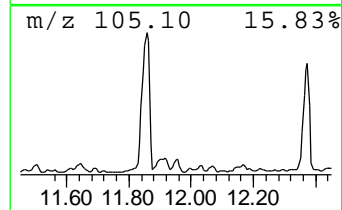
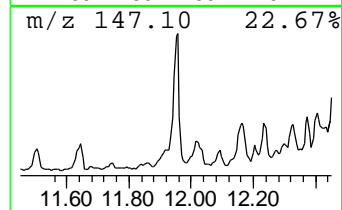
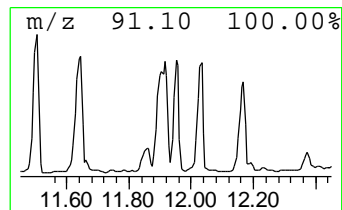
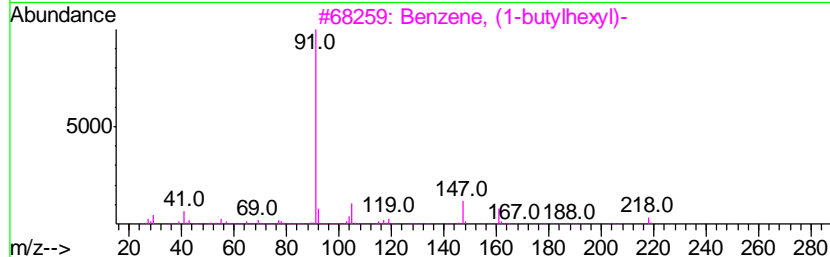
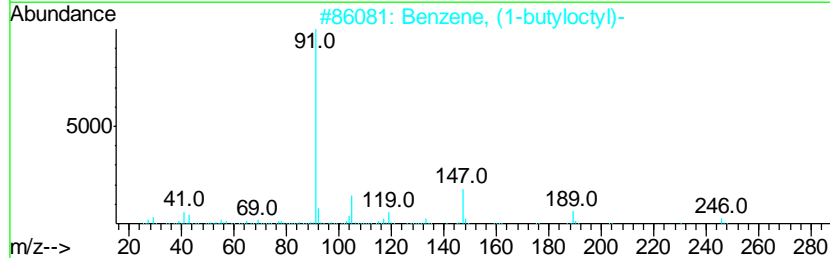
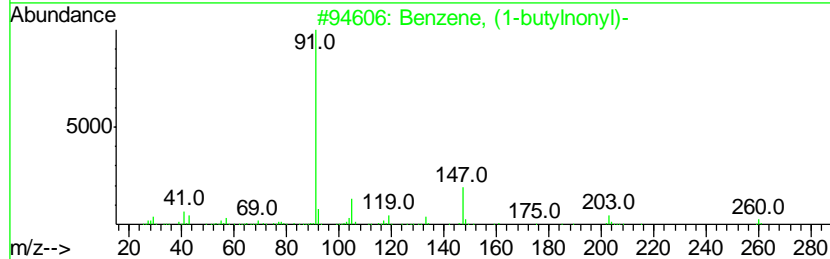
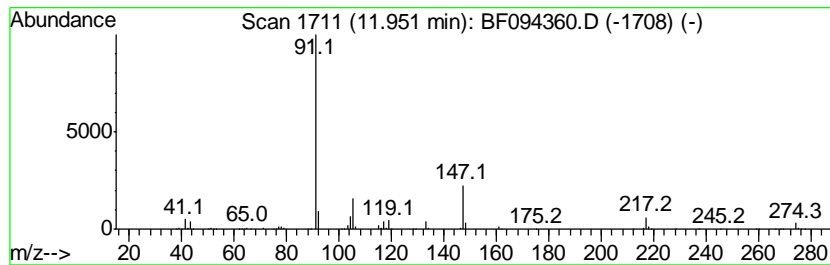
TIC Library : C:\DATABASE\NIST02.L  
 TIC Integration Parameters: LSCINT.P

\*\*\*\*\*  
 Peak Number 17 Benzene, (1-butylnonyl)- Concentration Rank 11

R.T.	EstConc	Area	Relative to ISTD	R.T.
11.95	18.21 ng	3026130	Phenanthrene-d10	11.31

Hit#	of	Tentative ID	MW	MolForm	CAS#	Qual
1	5	Benzene, (1-butylnonyl)-	260	C19H32	004534-50-3	87
2		Benzene, (1-butyloctyl)-	246	C18H30	002719-63-3	64
3		Benzene, (1-butylhexyl)-	218	C16H26	004537-11-5	56
4		Benzene, (1-ethyldecyl)-	246	C18H30	002400-00-2	50
5		Benzene, (1-butylheptyl)-	232	C17H28	004537-15-9	50



Data Path : Z:\HPCHEM1\BNA F\DATA\BF041117\  
 Data File : BF094360.D  
 Acq On : 11 Apr 2017 19:51  
 Operator : SJ/MA  
 Sample : I2620-11  
 Misc :  
 ALS Vial : 9 Sample Multiplier: 1

Instrument :  
 BNA\_F  
 ClientSampleId :  
 SOUTH-MAHWAH

Quant Method : Z:\HPCHEM1\BNA F\METHODS\8270-BF032217.M  
 Quant Title : ASP BNA STANDARDS FOR 5 POINT CALIBRATION

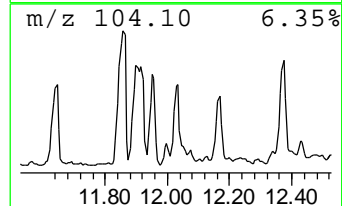
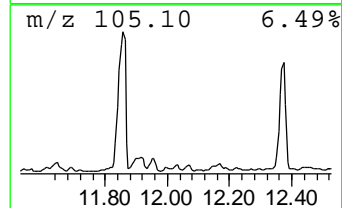
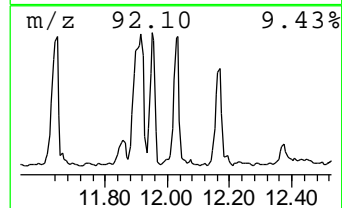
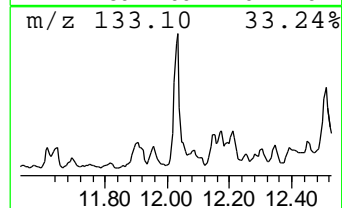
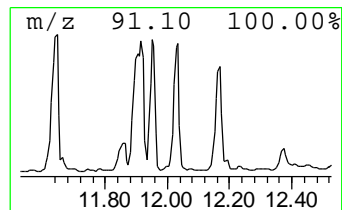
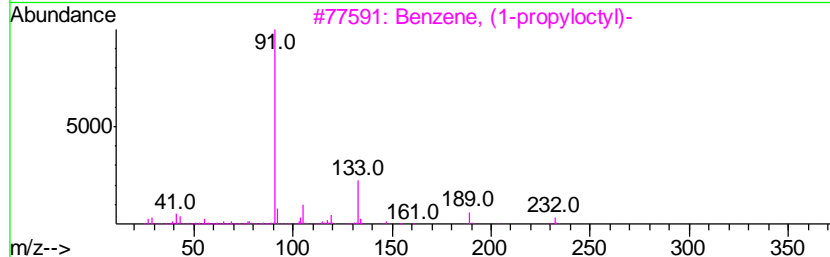
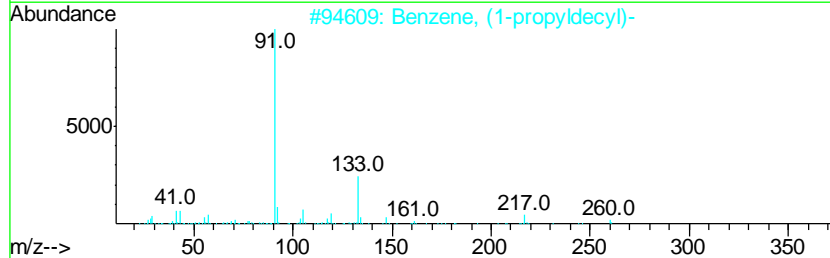
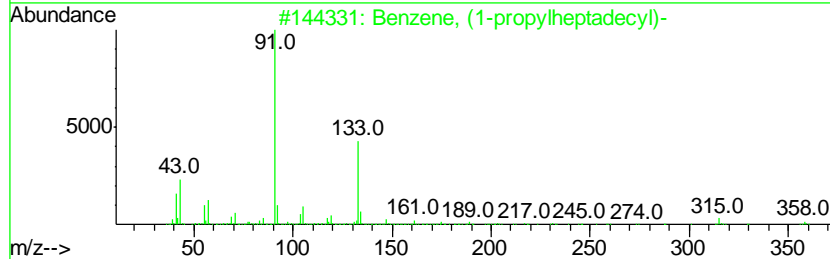
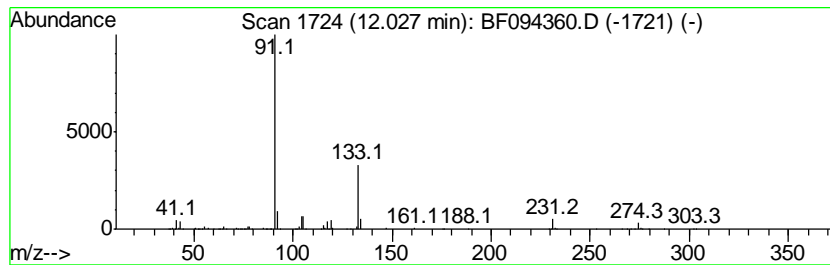
TIC Library : C:\DATABASE\NIST02.L  
 TIC Integration Parameters: LSCINT.P

\*\*\*\*\*  
 Peak Number 18 Benzene, (1-propylheptadecyl)- Concentration Rank 14

R.T.	EstConc	Area	Relative to ISTD	R.T.
12.03	16.28 ng	2705170	Phenanthrene-d10	11.31

Hit#	of	Tentative ID	MW	MolForm	CAS#	Qual
1	5	Benzene, (1-propylheptadecyl)-	358	C26H46	002400-03-5	72
2		Benzene, (1-propyldecyl)-	260	C19H32	004534-51-4	59
3		Benzene, (1-propyloctyl)-	232	C17H28	004536-86-1	56
4		Benzene, (1-propylnonyl)-	246	C18H30	002719-64-4	56
5		Benzene, (1-propylheptyl)-	218	C16H26	004537-12-6	40





Data Path : Z:\HPCHEM1\BNA F\DATA\BF041117\  
 Data File : BF094360.D  
 Acq On : 11 Apr 2017 19:51  
 Operator : SJ/MA  
 Sample : I2620-11  
 Misc :  
 ALS Vial : 9 Sample Multiplier: 1

Instrument :  
 BNA\_F  
 ClientSampleId :  
 SOUTH-MAHWAH

Quant Method : Z:\HPCHEM1\BNA F\METHODS\8270-BF032217.M  
 Quant Title : ASP BNA STANDARDS FOR 5 POINT CALIBRATION

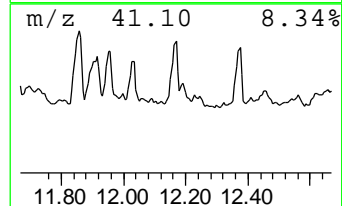
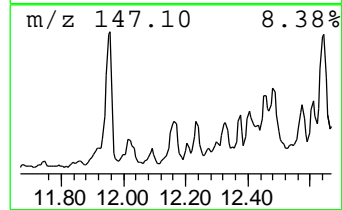
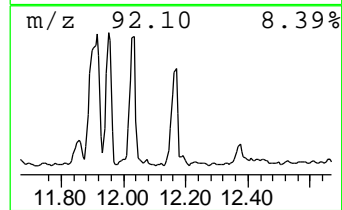
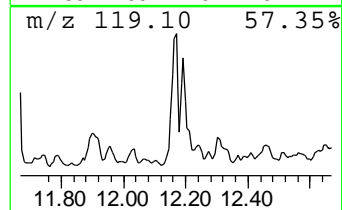
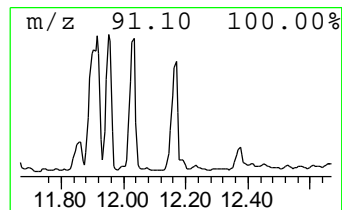
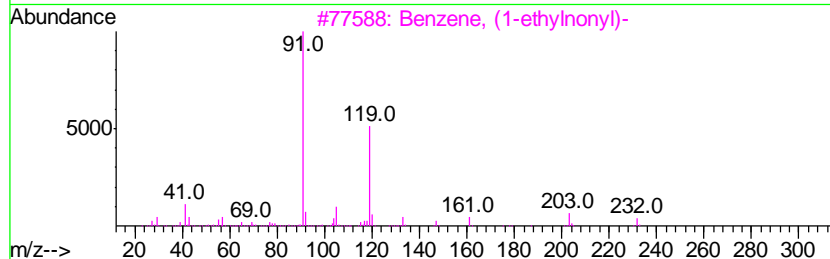
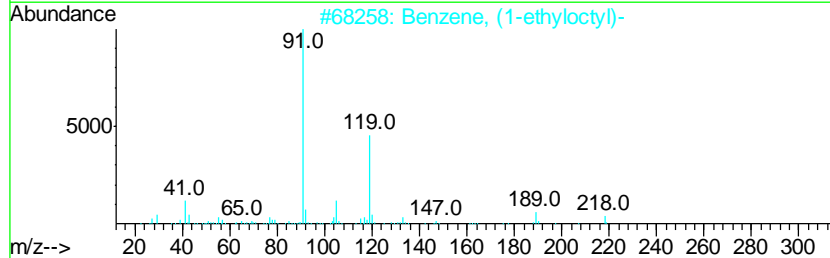
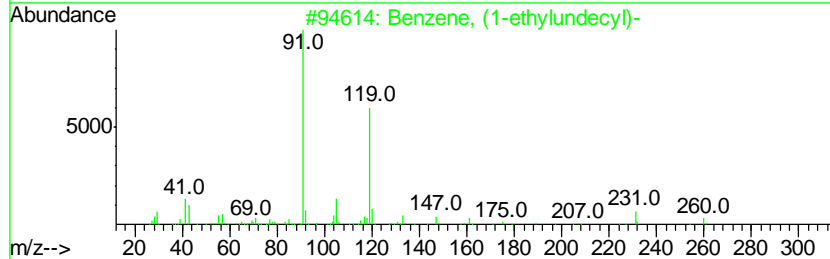
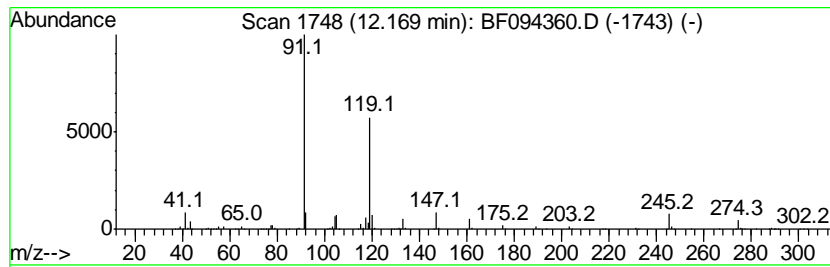
TIC Library : C:\DATABASE\NIST02.L  
 TIC Integration Parameters: LSCINT.P

\*\*\*\*\*  
 Peak Number 19 Benzene, (1-ethylundecyl)- Concentration Rank 10

R.T.	EstConc	Area	Relative to ISTD	R.T.
12.17	20.19 ng	3354540	Phenanthrene-d10	11.31

Hit#	of	Tentative ID	MW	MolForm	CAS#	Qual
1	5	Benzene, (1-ethylundecyl)-	260	C19H32	004534-52-5	64
2		Benzene, (1-ethyloctyl)-	218	C16H26	004621-36-7	64
3		Benzene, (1-ethylnonyl)-	232	C17H28	004536-87-2	56
4		Pentadecane, 3-phenyl-	288	C21H36	004534-65-0	53
5		Benzene, (1-ethyldecyl)-	246	C18H30	002400-00-2	50



Data Path : Z:\HPCHEM1\BNA F\DATA\BF041117\  
 Data File : BF094360.D  
 Acq On : 11 Apr 2017 19:51  
 Operator : SJ/MA  
 Sample : I2620-11  
 Misc :  
 ALS Vial : 9 Sample Multiplier: 1

Instrument :  
 BNA\_F  
 ClientSampleId :  
 SOUTH-MAHWAH

Quant Method : Z:\HPCHEM1\BNA F\METHODS\8270-BF032217.M  
 Quant Title : ASP BNA STANDARDS FOR 5 POINT CALIBRATION

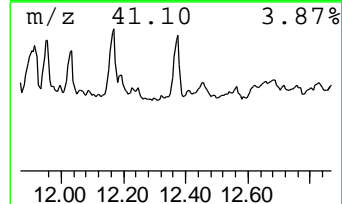
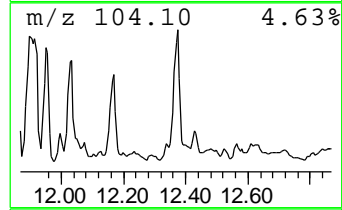
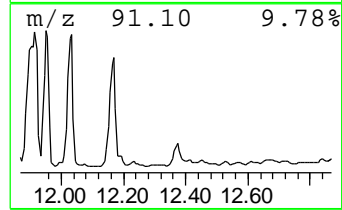
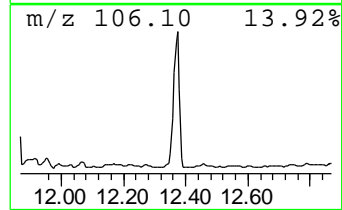
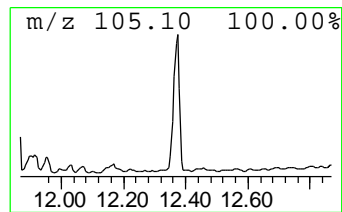
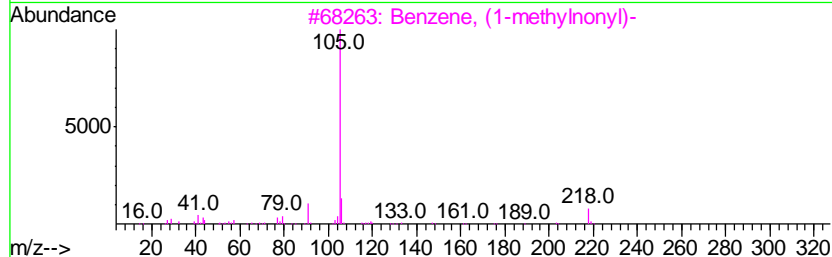
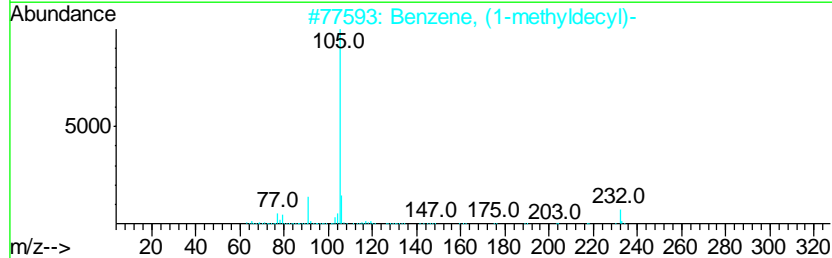
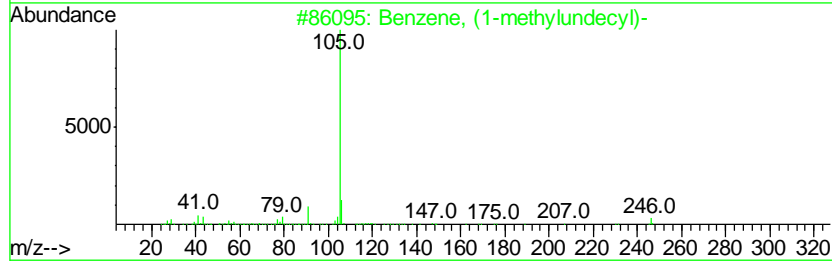
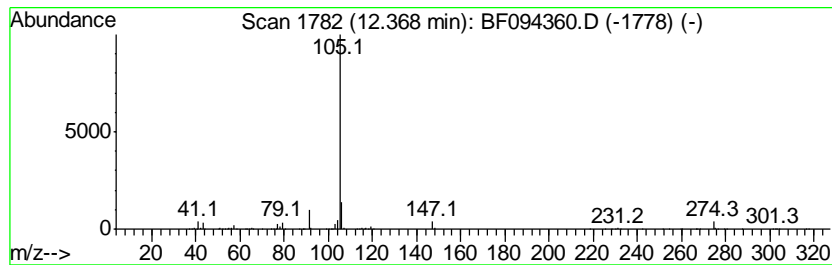
TIC Library : C:\DATABASE\NIST02.L  
 TIC Integration Parameters: LSCINT.P

\*\*\*\*\*  
 Peak Number 20 Benzene, (1-methylundecyl)- Concentration Rank 7

R.T.	EstConc	Area	Relative to ISTD	R.T.
12.37	22.96 ng	3815800	Phenanthrene-d10	11.31

Hit#	of	Tentative ID	MW	MolForm	CAS#	Qual
1	5	Benzene, (1-methylundecyl)-	246	C18H30	002719-61-1	59
2		Benzene, (1-methyldecyl)-	232	C17H28	004536-88-3	59
3		Benzene, (1-methylnonyl)-	218	C16H26	004537-13-7	59
4		Benzene, (1-methyldodecyl)-	260	C19H32	004534-53-6	59
5		Benzene, (1-methyltridecyl)-	274	C20H34	004534-59-2	50



Data Path : Z:\HPCHEM1\BNA\_F\DATA\BF041117\  
 Data File : BF094360.D  
 Acq On : 11 Apr 2017 19:51  
 Operator : SJ/MA  
 Sample : I2620-11  
 Misc :  
 ALS Vial : 9 Sample Multiplier: 1

Instrument :  
 BNA\_F  
 ClientSampleId :  
 SOUTH-MAHWAH

Quant Method : Z:\HPCHEM1\BNA\_F\METHODS\8270-BF032217.M  
 Quant Title : ASP BNA STANDARDS FOR 5 POINT CALIBRATION

TIC Library : C:\DATABASE\NIST02.L  
 TIC Integration Parameters: LSCINT.P

TIC Top Hit name	RT	EstConc	Units	Response	--Internal Standard--			
					#	RT	Resp	Conc
2-Pentanone, 4-hy...	3.96	12.3	ng	509328	1	5.82	831867	20.0
unknown5.58	5.58	96.5	ng	4014350	1	5.82	831867	20.0
unknown9.37	9.37	17.5	ng	2015550	3	9.47	2298000	20.0
Benzene, (1-ethyl...	9.89	17.4	ng	1996970	3	9.47	2298000	20.0
unknown9.99	9.99	14.3	ng	1645740	3	9.47	2298000	20.0
Benzene, (1-butyl...	10.29	13.5	ng	1548890	3	9.47	2298000	20.0
Benzene, (1-propy...	10.36	14.3	ng	1647100	3	9.47	2298000	20.0
Benzene, (1-propy...	10.95	11.6	ng	1923510	4	11.31	3323210	20.0
Benzene, (1-penty...	11.39	31.2	ng	5178250	4	11.31	3323210	20.0
Benzene, (1-methy...	11.86	34.1	ng	5673100	4	11.31	3323210	20.0
Benzene, (1-penty...	11.92	31.5	ng	5236940	4	11.31	3323210	20.0
Benzene, (1-butyl...	11.95	18.2	ng	3026130	4	11.31	3323210	20.0
Benzene, (1-propy...	12.03	16.3	ng	2705170	4	11.31	3323210	20.0
Benzene, (1-ethyl...	12.17	20.2	ng	3354540	4	11.31	3323210	20.0
Benzene, (1-methy...	12.37	23.0	ng	3815800	4	11.31	3323210	20.0