

Data Path : Z:\HPCHEM1\BNA F\DATA\BF041117\  
 Data File : BF094367.D  
 Acq On : 11 Apr 2017 23:04  
 Operator : SJ/MA  
 Sample : I2625-02  
 Misc :  
 ALS Vial : 16 Sample Multiplier: 1

Instrument :  
 BNA\_F  
 ClientSampleId :  
 IM-TS-EME-08

Integration Parameters: rteint.p  
 Integrator: RTE  
 Smoothing : ON Filtering: 5  
 Sampling : 1 Min Area: 3 % of largest Peak  
 Start Thrs: 0.2 Max Peaks: 100  
 Stop Thrs : 0 Peak Location: TOP

If leading or trailing edge < 100 prefer < Baseline drop else tangent >  
 Peak separation: 5

Method : Z:\HPCHEM1\BNA F\METHODS\8270-BF032217.M  
 Title : ASP BNA STANDARDS FOR 5 POINT CALIBRATION

Signal : TIC

peak #	R.T. min	first scan	max scan	last scan	PK TY	peak height	corr. area	corr. % max.	% of total
1	3.969	350	354	360	rBV	258947	305364	8.96%	0.948%
2	4.387	421	425	429	rBV	2845038	2861480	84.01%	8.880%
3	5.469	603	609	615	rVB	2758631	3305035	97.03%	10.256%
4	5.587	624	629	632	rBV	3168498	3158885	92.74%	9.803%
5	5.828	666	670	674	rBV	885080	787058	23.11%	2.442%
6	6.010	696	701	704	rBV	2588486	2586944	75.95%	8.028%
7	6.481	775	781	784	rBV	1840450	2041745	59.94%	6.336%
8	7.334	920	926	929	rBV	1027392	1039743	30.52%	3.226%
9	8.657	1144	1151	1154	rBV	3319239	3406321	100.00%	10.570%
10	9.151	1231	1235	1239	rBV	565527	547710	16.08%	1.700%
11	9.469	1282	1289	1294	rBV2	983727	1050828	30.85%	3.261%
12	10.063	1386	1390	1394	rVB	65106	58902	1.73%	0.183%
13	10.451	1450	1456	1459	rBV	1476585	1543180	45.30%	4.789%
14	10.645	1486	1489	1497	rVB	71410	93892	2.76%	0.291%
15	10.804	1512	1516	1521	rBV	66821	70276	2.06%	0.218%
16	11.204	1581	1584	1588	rBV	54272	51821	1.52%	0.161%
17	11.292	1595	1599	1607	rBV	878224	927431	27.23%	2.878%
18	11.404	1614	1618	1620	rBV	53099	53392	1.57%	0.166%
19	11.433	1620	1623	1627	rVB	114097	117004	3.43%	0.363%
20	11.733	1671	1674	1680	rVB	55548	62319	1.83%	0.193%
21	12.033	1720	1725	1733	rBV2	196500	286948	8.42%	0.890%
22	12.233	1755	1759	1764	rBV5	43116	71202	2.09%	0.221%
23	12.486	1798	1802	1803	rBV	54250	66471	1.95%	0.206%
24	12.633	1824	1827	1831	rBV	127826	144297	4.24%	0.448%
25	12.721	1838	1842	1843	rBV3	47291	60630	1.78%	0.188%
26	12.757	1844	1848	1851	rVV3	182638	256940	7.54%	0.797%
27	12.786	1851	1853	1857	rVB	58276	55512	1.63%	0.172%
28	12.939	1869	1879	1888	rBV	671735	1417800	41.62%	4.400%
29	13.274	1931	1936	1940	rBV	1981452	2333213	68.50%	7.240%
30	13.321	1940	1944	1947	rVB	161818	195236	5.73%	0.606%
31	13.868	2034	2037	2039	rBV	86109	93310	2.74%	0.290%
32	13.910	2039	2044	2049	rVB	218613	356061	10.45%	1.105%
33	14.145	2079	2084	2088	rBV2	190417	259580	7.62%	0.806%
34	14.451	2133	2136	2140	rVB	102513	116783	3.43%	0.362%

Data Path : Z:\HPCHEM1\BNA\_F\DATA\BF041117\  
Data File : BF094367.D  
Acq On : 11 Apr 2017 23:04  
Operator : SJ/MA  
Sample : I2625-02  
Misc :  
ALS Vial : 16 Sample Multiplier: 1

Instrument :  
BNA\_F  
ClientSampleId :  
IM-TS-EME-08

Integration Parameters: rteint.p  
Integrator: RTE  
Smoothing : ON Filtering: 5  
Sampling : 1 Min Area: 3 % of largest Peak  
Start Thrs: 0.2 Max Peaks: 100  
Stop Thrs : 0 Peak Location: TOP

If leading or trailing edge < 100 prefer < Baseline drop else tangent >  
Peak separation: 5

Method : Z:\HPCHEM1\BNA\_F\METHODS\8270-BF032217.M  
Title : ASP BNA STANDARDS FOR 5 POINT CALIBRATION

35	14.551	2149	2153	2157	rBV	746072	801835	23.54%	2.488%
36	15.945	2387	2390	2393	rVB	174238	182025	5.34%	0.565%
37	16.180	2426	2430	2436	rVB	592473	777500	22.83%	2.413%
38	16.474	2477	2480	2483	rBV	206503	233004	6.84%	0.723%
39	16.574	2494	2497	2507	rVB	278332	447493	13.14%	1.389%

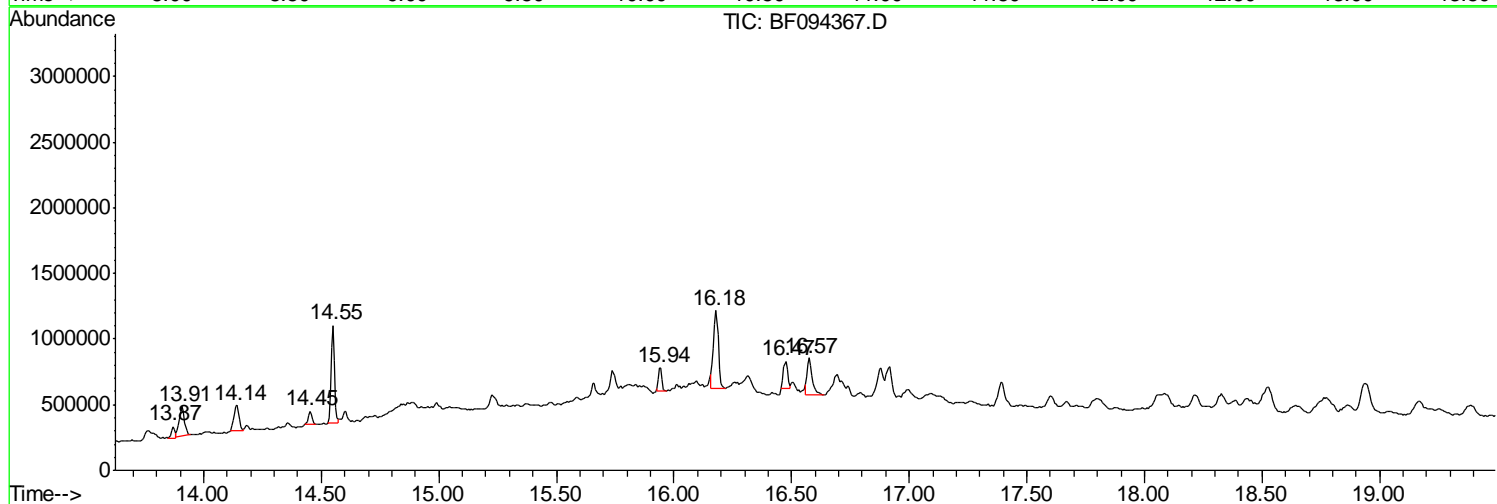
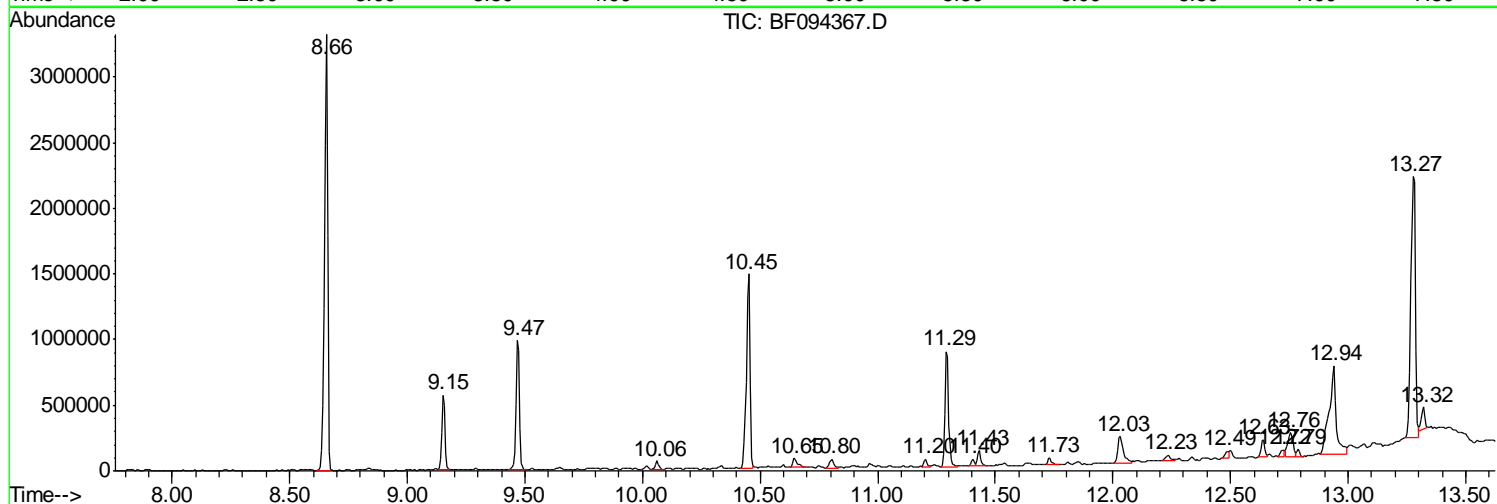
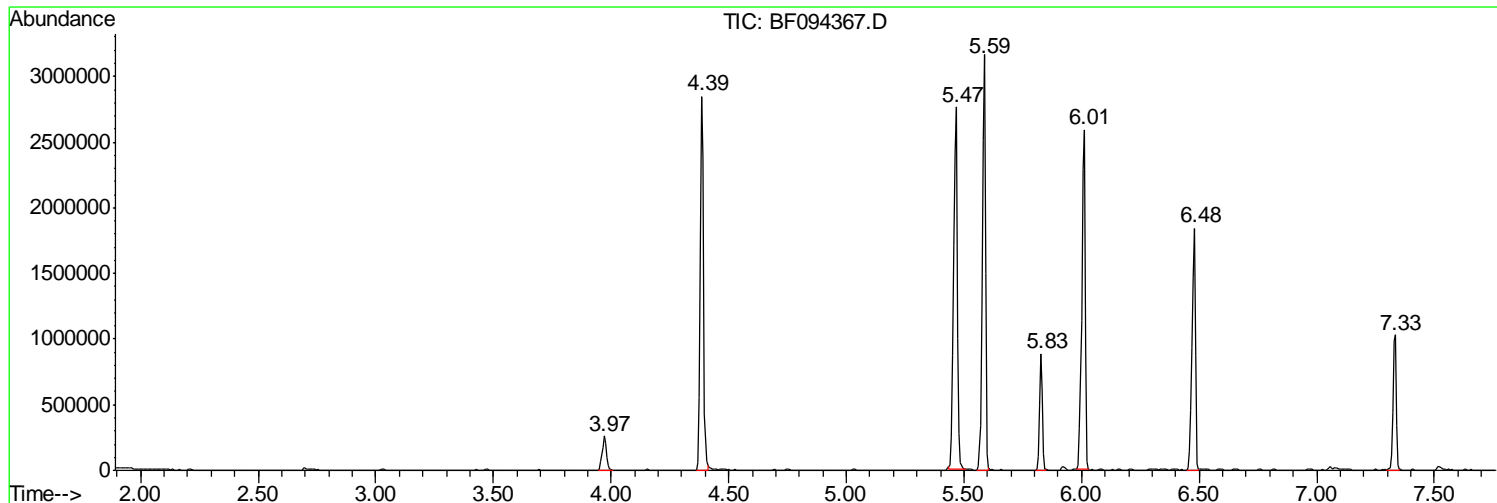
Sum of corrected areas: 32225170

Data Path : Z:\HPCHEM1\BNA F\DATA\BF041117\  
 Data File : BF094367.D  
 Acq On : 11 Apr 2017 23:04  
 Operator : SJ/MA  
 Sample : I2625-02  
 Misc :  
 ALS Vial : 16 Sample Multiplier: 1

Instrument :  
 BNA\_F  
 ClientSampleId :  
 IM-TS-EME-08

Quant Method : Z:\HPCHEM1\BNA F\METHODS\8270-BF032217.M  
 Quant Title : ASP BNA STANDARDS FOR 5 POINT CALIBRATION

TIC Library : C:\DATABASE\NIST02.L  
 TIC Integration Parameters: LSCINT.P



Data Path : Z:\HPCHEM1\BNA F\DATA\BF041117\  
 Data File : BF094367.D  
 Acq On : 11 Apr 2017 23:04  
 Operator : SJ/MA  
 Sample : I2625-02  
 Misc :  
 ALS Vial : 16 Sample Multiplier: 1

Instrument :  
 BNA\_F  
 ClientSampleID :  
 IM-TS-EME-08

Quant Method : Z:\HPCHEM1\BNA F\METHODS\8270-BF032217.M  
 Quant Title : ASP BNA STANDARDS FOR 5 POINT CALIBRATION

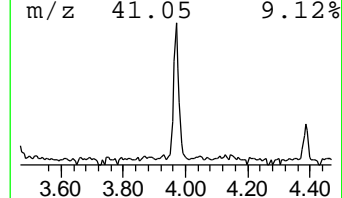
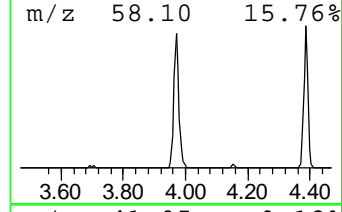
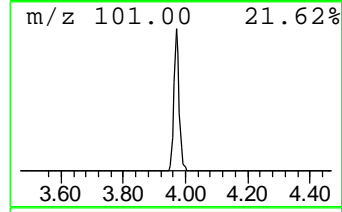
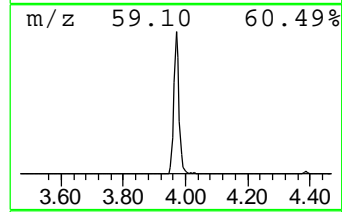
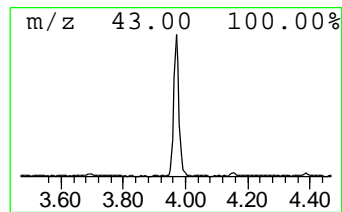
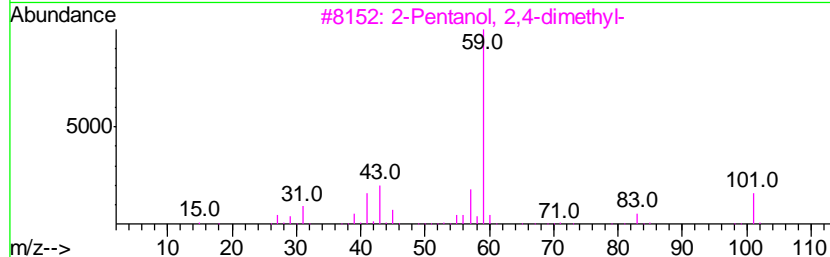
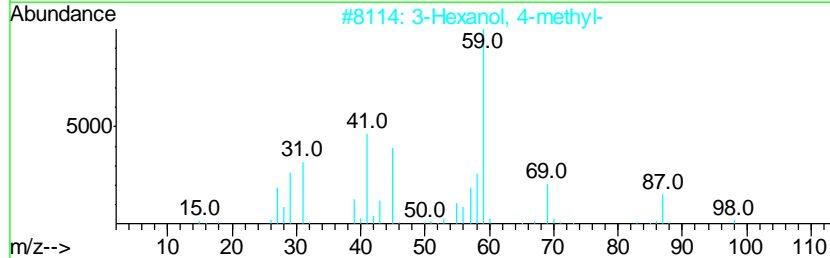
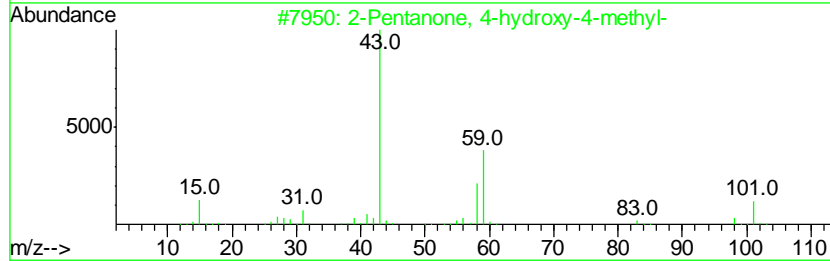
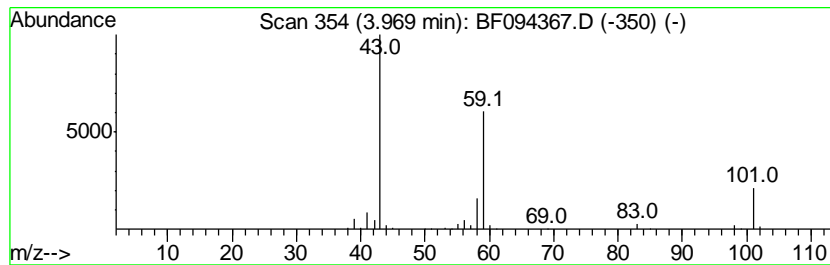
TIC Library : C:\DATABASE\NIST02.L  
 TIC Integration Parameters: LSCINT.P

\*\*\*\*\*  
 Peak Number 1 2-Pentanone, 4-hydroxy-4-me... Concentration Rank 6

R.T.	EstConc	Area	Relative to ISTD	R.T.
3.97	7.76 ng	305364	1,4-Dichlorobenzene-d4	5.83

Hit#	of	Tentative ID	MW	MolForm	CAS#	Qual
1	5	2-Pentanone, 4-hydroxy-4-methyl-	116	C6H12O2	000123-42-2	56
2		3-Hexanol, 4-methyl-	116	C7H16O	000615-29-2	28
3		2-Pentanol, 2,4-dimethyl-	116	C7H16O	000625-06-9	23
4		Acetic acid, cyano-, 1,1-dimethyl...	141	C7H11NO2	001116-98-9	17
5		Butane, 1-ethoxy-	102	C6H14O	000628-81-9	9



Data Path : Z:\HPCHEM1\BNA F\DATA\BF041117\  
 Data File : BF094367.D  
 Acq On : 11 Apr 2017 23:04  
 Operator : SJ/MA  
 Sample : I2625-02  
 Misc :  
 ALS Vial : 16 Sample Multiplier: 1

Instrument :  
 BNA\_F  
 ClientSampleId :  
 IM-TS-EME-08

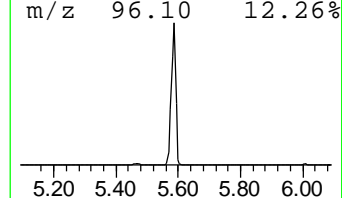
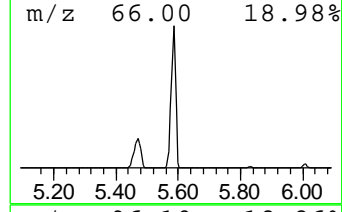
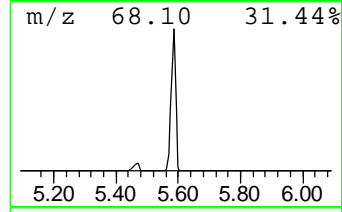
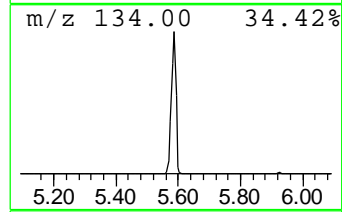
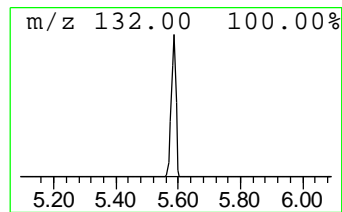
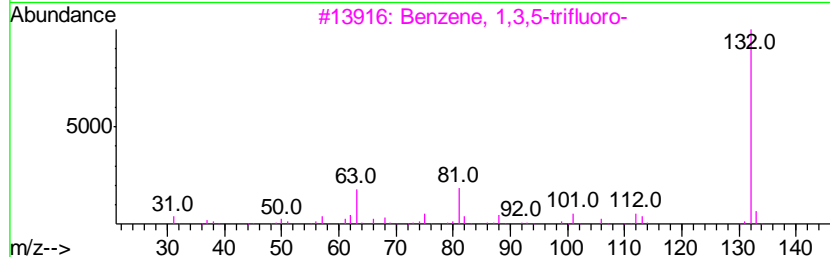
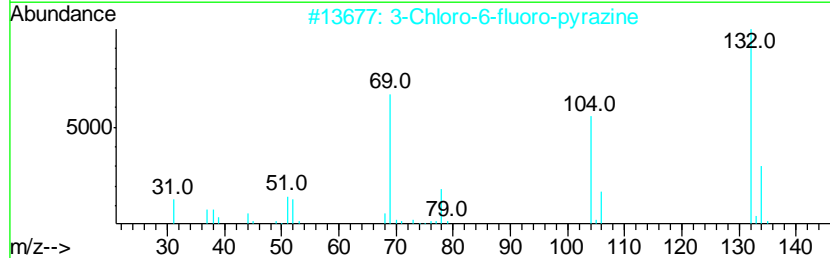
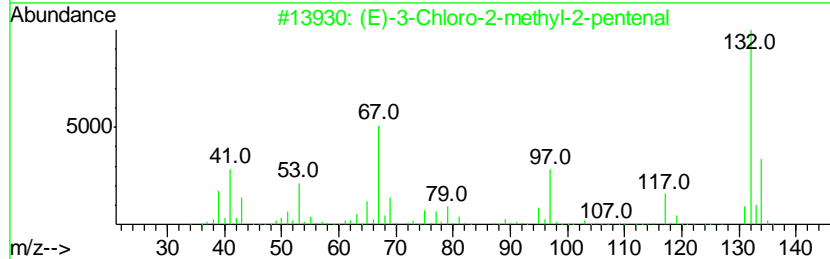
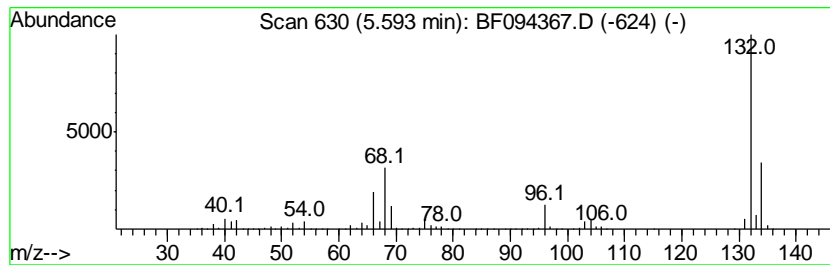
Quant Method : Z:\HPCHEM1\BNA F\METHODS\8270-BF032217.M  
 Quant Title : ASP BNA STANDARDS FOR 5 POINT CALIBRATION

TIC Library : C:\DATABASE\NIST02.L  
 TIC Integration Parameters: LSCINT.P

\*\*\*\*\*  
 Peak Number 2 unknown5.59 Concentration Rank 1

R.T.	EstConc	Area	Relative to ISTD	R.T.
5.59	80.27 ng	3158890	1,4-Dichlorobenzene-d4	5.83

Hit#	of	Tentative ID	MW	MolForm	CAS#	Qual
1	5	(E)-3-Chloro-2-methyl-2-pentenal	132	C6H9ClO	031357-76-3	17
2		3-Chloro-6-fluoro-pyrazine	132	C4H2ClFN2	1000146-10-7	16
3		Benzene, 1,3,5-trifluoro-	132	C6H3F3	000372-38-3	9
4		4-Chloro-6-fluoro-pyrimidine	132	C4H2ClFN2	051422-01-6	9
5		4-Methylpyrrolo[1,2-a]pyrazine	132	C8H8N2	064608-60-2	9



Data Path : Z:\HPCHEM1\BNA F\DATA\BF041117\  
 Data File : BF094367.D  
 Acq On : 11 Apr 2017 23:04  
 Operator : SJ/MA  
 Sample : I2625-02  
 Misc :  
 ALS Vial : 16 Sample Multiplier: 1

Instrument :  
 BNA\_F  
 ClientSampleID :  
 IM-TS-EME-08

Quant Method : Z:\HPCHEM1\BNA F\METHODS\8270-BF032217.M  
 Quant Title : ASP BNA STANDARDS FOR 5 POINT CALIBRATION

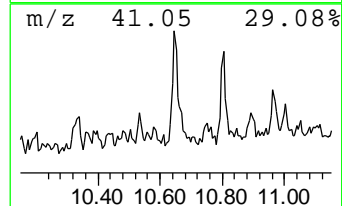
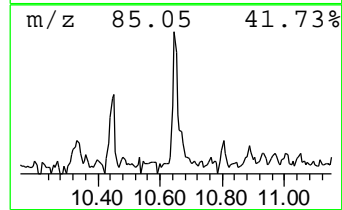
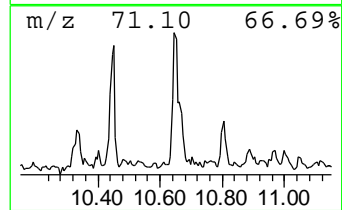
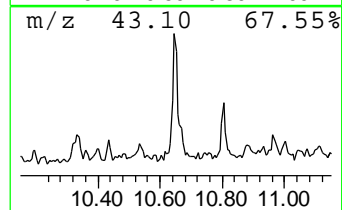
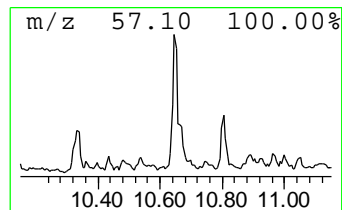
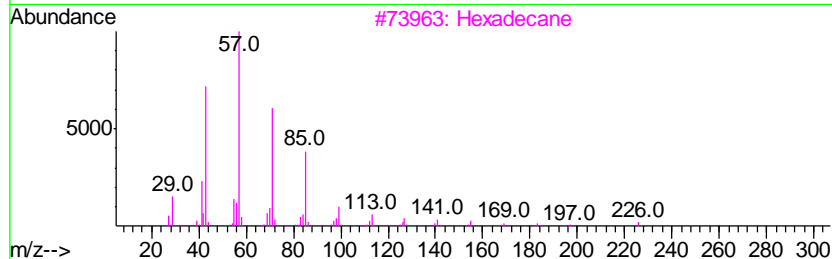
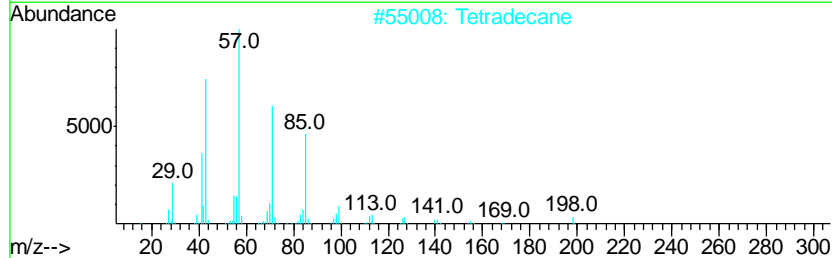
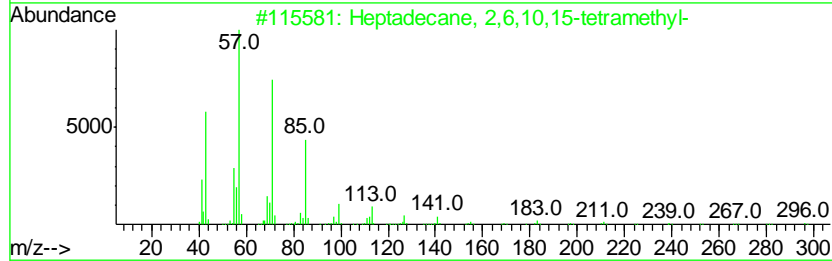
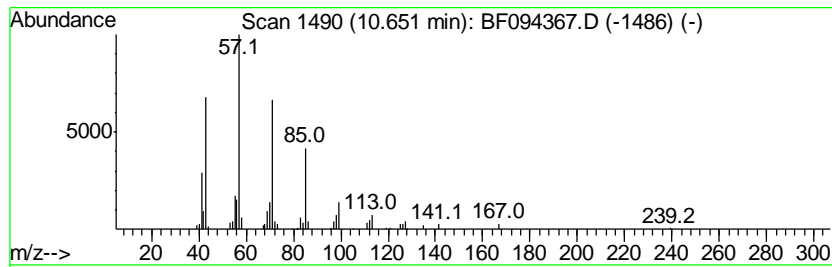
TIC Library : C:\DATABASE\NIST02.L  
 TIC Integration Parameters: LSCINT.P

\*\*\*\*\*  
 Peak Number 4 Heptadecane, 2,6,10,15-tetr... Concentration Rank 16

R.T.	EstConc	Area	Relative to ISTD	R.T.
10.65	2.02 ng	93892	Phenanthrene-d10	11.29

Hit#	of	Tentative ID	MW	MolForm	CAS#	Qual
1	5	Heptadecane, 2,6,10,15-tetramethyl-	296	C21H44	054833-48-6	90
2		Tetradecane	198	C14H30	000629-59-4	90
3		Hexadecane	226	C16H34	000544-76-3	90
4		Pentadecane	212	C15H32	000629-62-9	90
5		Eicosane	282	C20H42	000112-95-8	86



Data Path : Z:\HPCHEM1\BNA F\DATA\BF041117\  
 Data File : BF094367.D  
 Acq On : 11 Apr 2017 23:04  
 Operator : SJ/MA  
 Sample : I2625-02  
 Misc :  
 ALS Vial : 16 Sample Multiplier: 1

Instrument :  
 BNA\_F  
 ClientSampleID :  
 IM-TS-EME-08

Quant Method : Z:\HPCHEM1\BNA F\METHODS\8270-BF032217.M  
 Quant Title : ASP BNA STANDARDS FOR 5 POINT CALIBRATION

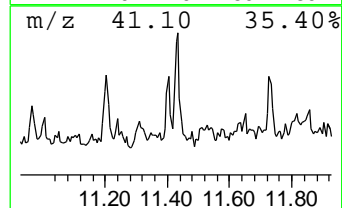
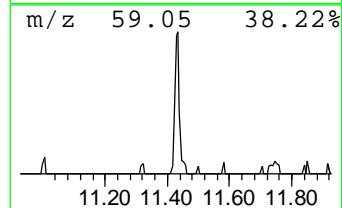
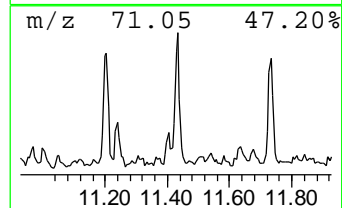
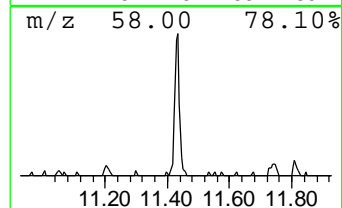
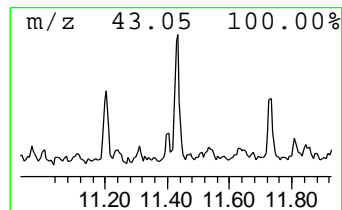
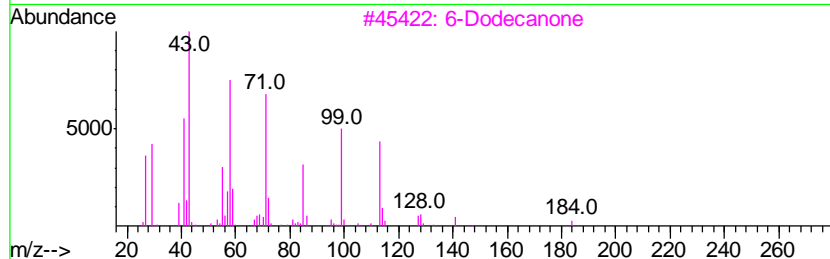
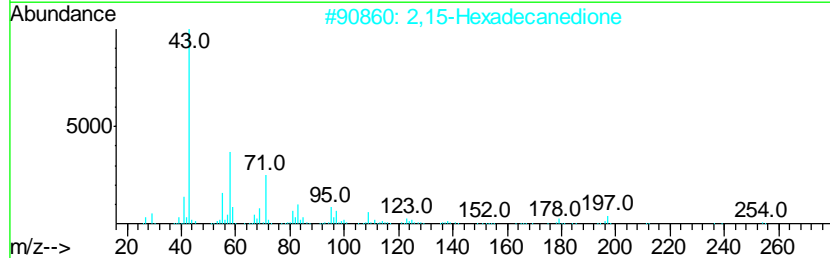
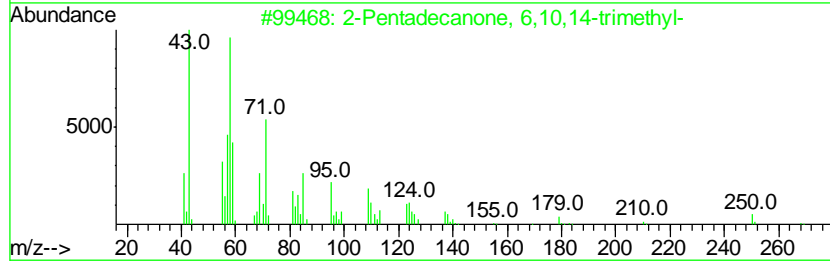
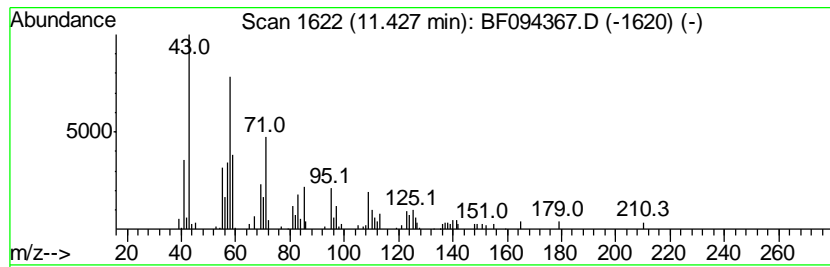
TIC Library : C:\DATABASE\NIST02.L  
 TIC Integration Parameters: LSCINT.P

\*\*\*\*\*  
 Peak Number 5 2-Pentadecanone, 6,10,14-tr... Concentration Rank 14

R.T.	EstConc	Area	Relative to ISTD	R.T.
11.43	2.52 ng	117004	Phenanthrene-d10	11.29

Hit#	of	Tentative ID	MW	MolForm	CAS#	Qual
1	5	2-Pentadecanone, 6,10,14-trimethyl-	268	C18H36O	000502-69-2	87
2		2,15-Hexadecanedione	254	C16H30O2	018650-13-0	59
3		6-Dodecanone	184	C12H24O	006064-27-3	40
4		6-Methyl-2-tridecanone	212	C14H28O	073105-73-4	38
5		2-Isopropyl-5-oxohexanal	156	C9H16O2	015303-46-5	37



Data Path : Z:\HPCHEM1\BNA F\DATA\BF041117\  
 Data File : BF094367.D  
 Acq On : 11 Apr 2017 23:04  
 Operator : SJ/MA  
 Sample : I2625-02  
 Misc :  
 ALS Vial : 16 Sample Multiplier: 1

Instrument :  
 BNA\_F  
 ClientSampleID :  
 IM-TS-EME-08

Quant Method : Z:\HPCHEM1\BNA F\METHODS\8270-BF032217.M  
 Quant Title : ASP BNA STANDARDS FOR 5 POINT CALIBRATION

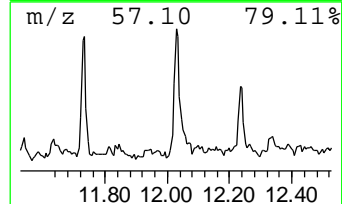
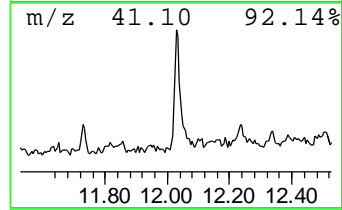
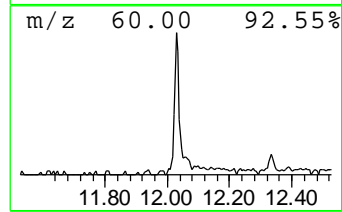
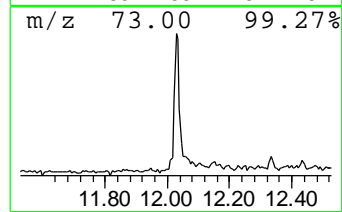
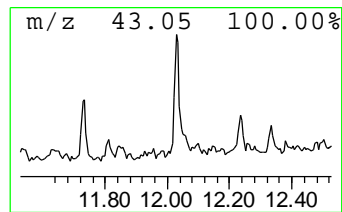
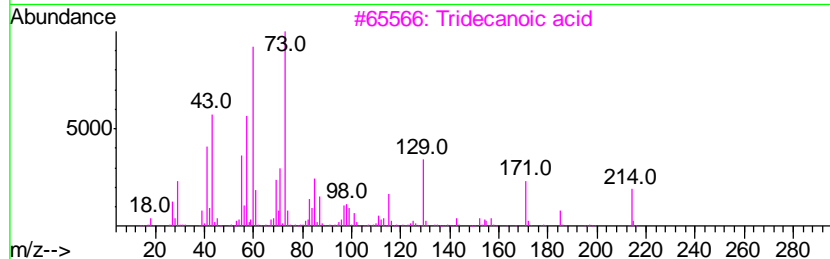
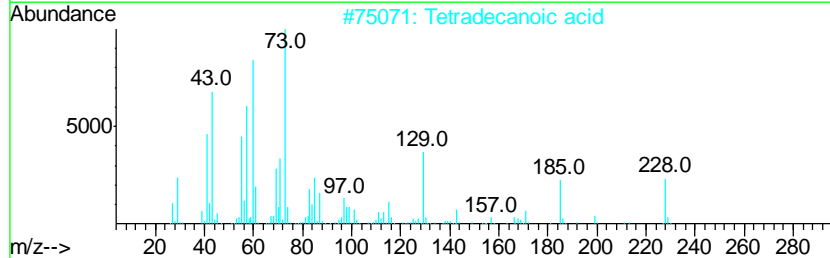
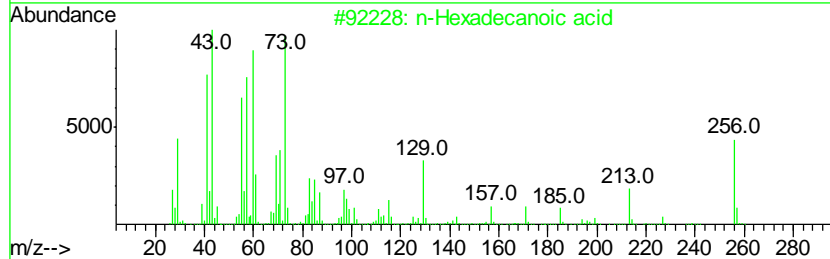
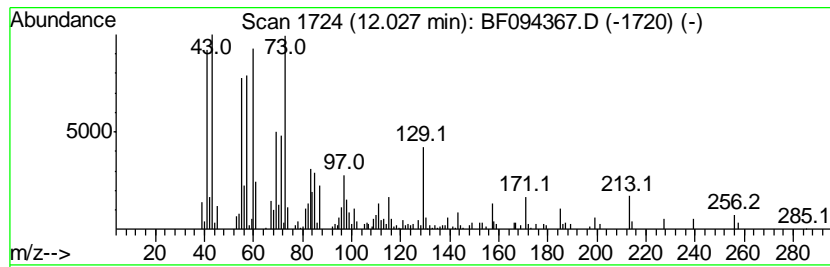
TIC Library : C:\DATABASE\NIST02.L  
 TIC Integration Parameters: LSCINT.P

\*\*\*\*\*  
 Peak Number 6 n-Hexadecanoic acid Concentration Rank 8

R.T.	EstConc	Area	Relative to ISTD	R.T.
12.03	6.19 ng	286948	Phenanthrene-d10	11.29

Hit#	of	Tentative ID	MW	MolForm	CAS#	Qual
1	5	n-Hexadecanoic acid	256	C16H32O2	000057-10-3	90
2		Tetradecanoic acid	228	C14H28O2	000544-63-8	80
3		Tridecanoic acid	214	C13H26O2	000638-53-9	76
4		Pentadecanoic acid	242	C15H30O2	001002-84-2	72
5		Dodecanoic acid	200	C12H24O2	000143-07-7	62





Data Path : Z:\HPCHEM1\BNA F\DATA\BF041117\  
 Data File : BF094367.D  
 Acq On : 11 Apr 2017 23:04  
 Operator : SJ/MA  
 Sample : I2625-02  
 Misc :  
 ALS Vial : 16 Sample Multiplier: 1

Instrument :  
 BNA\_F  
 ClientSampleID :  
 IM-TS-EME-08

Quant Method : Z:\HPCHEM1\BNA F\METHODS\8270-BF032217.M  
 Quant Title : ASP BNA STANDARDS FOR 5 POINT CALIBRATION

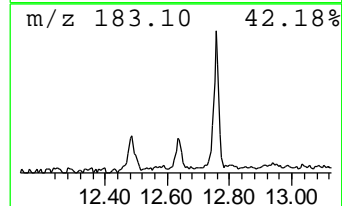
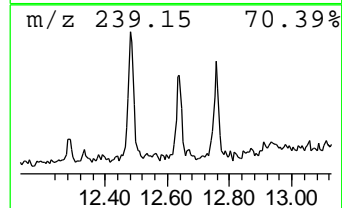
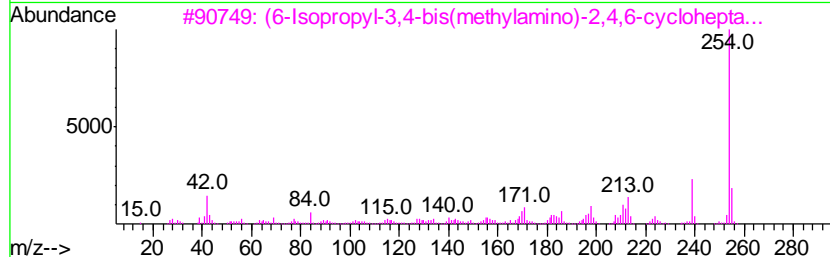
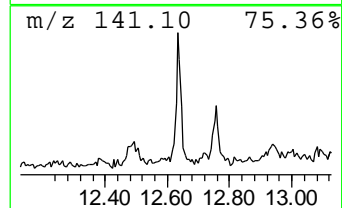
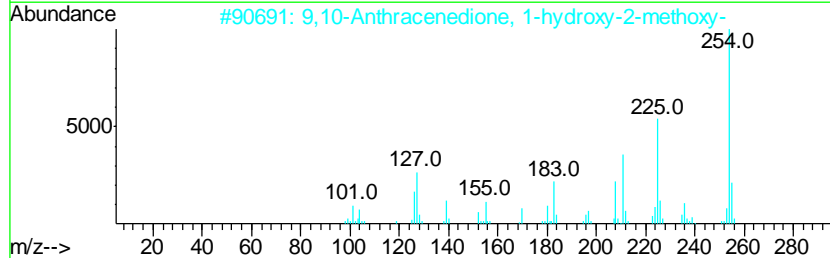
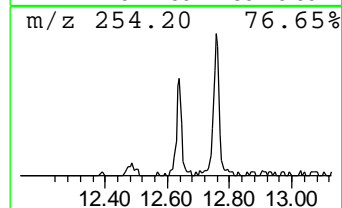
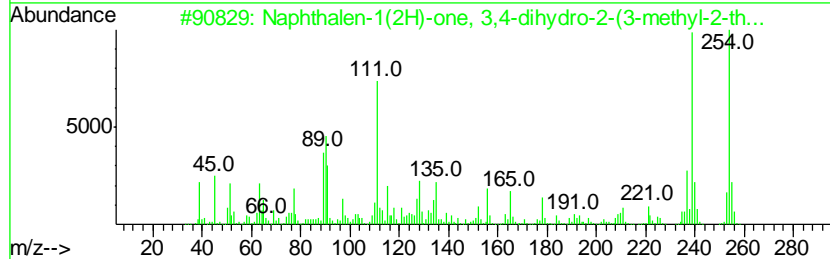
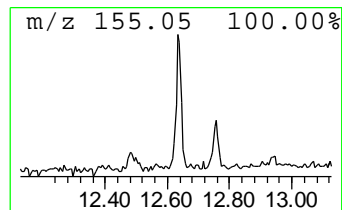
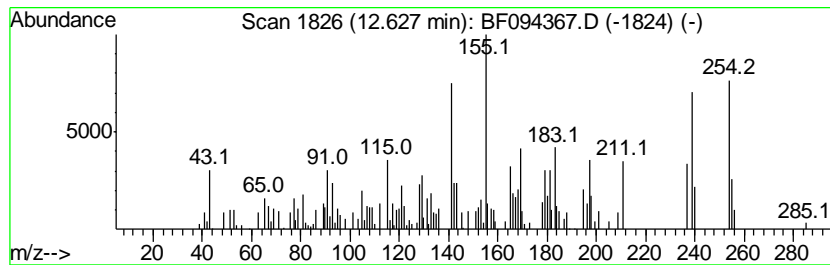
TIC Library : C:\DATABASE\NIST02.L  
 TIC Integration Parameters: LSCINT.P

\*\*\*\*\*  
 Peak Number 7 unknown12.63 Concentration Rank 12

R.T.	EstConc	Area	Relative to ISTD	R.T.
12.63	3.11 ng	144297	Phenanthrene-d10	11.29

Hit#	of	Tentative ID	MW	MolForm	CAS#	Qual
1	5	Naphthalen-1(2H)-one, 3,4-dihydr...	254	C16H14OS	351066-46-1	46
2		9,10-Anthracenedione, 1-hydroxy-...	254	C15H10O4	006003-11-8	35
3		(6-Isopropyl-3,4-bis(methylamino)...	254	C15H18N4	014203-76-0	30
4		Pyrrolo[3,2- $\alpha$ ]quinoline, 9-metho...	254	C16H18N2O	199918-71-3	30
5		Benzenamine, 3,5-dimethyl-5-nitr...	254	C16H18N2O	295780-40-4	30



Data Path : Z:\HPCHEM1\BNA F\DATA\BF041117\  
 Data File : BF094367.D  
 Acq On : 11 Apr 2017 23:04  
 Operator : SJ/MA  
 Sample : I2625-02  
 Misc :  
 ALS Vial : 16 Sample Multiplier: 1

Instrument :  
 BNA\_F  
 ClientSampleID :  
 IM-TS-EME-08

Quant Method : Z:\HPCHEM1\BNA F\METHODS\8270-BF032217.M  
 Quant Title : ASP BNA STANDARDS FOR 5 POINT CALIBRATION

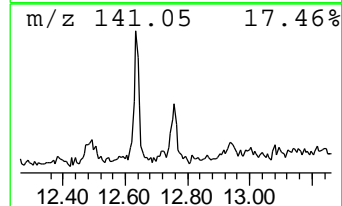
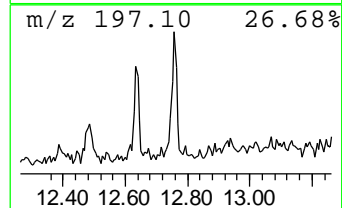
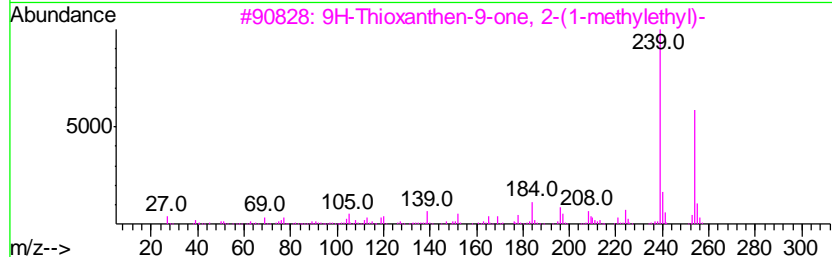
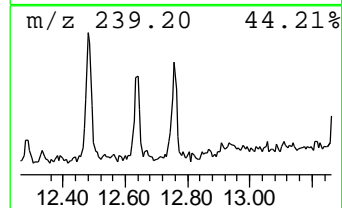
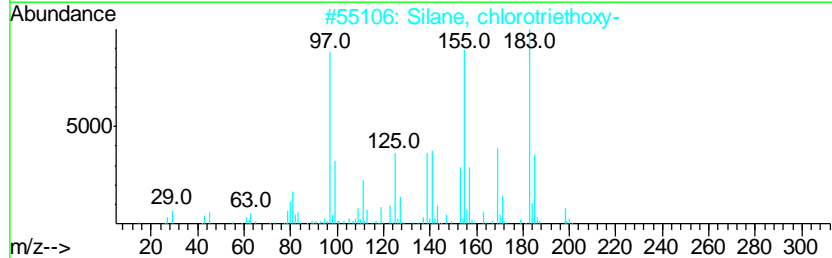
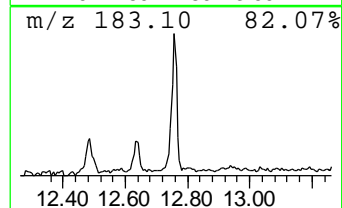
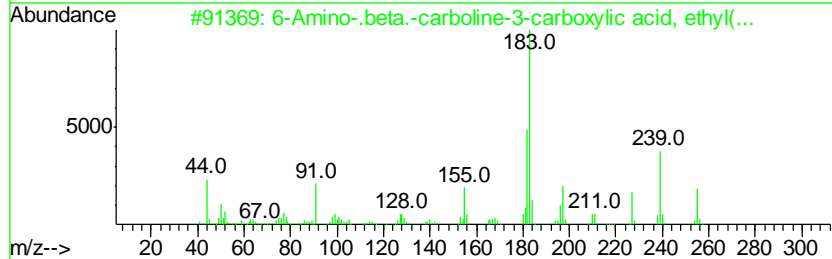
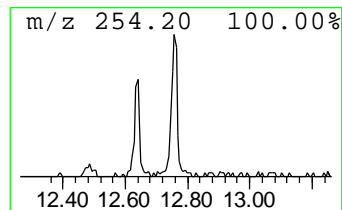
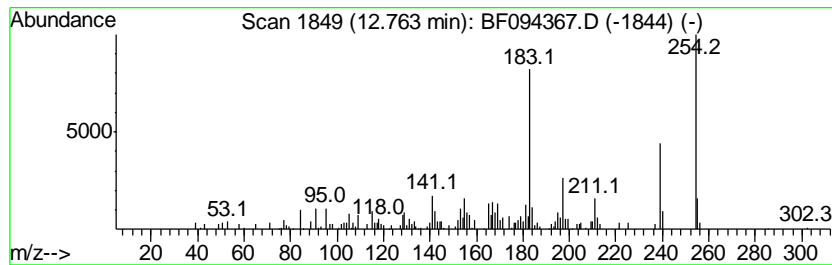
TIC Library : C:\DATABASE\NIST02.L  
 TIC Integration Parameters: LSCINT.P

\*\*\*\*\*  
 Peak Number 8 6-Amino-.beta.-carboline-3-... Concentration Rank 10

R.T.	EstConc	Area	Relative to ISTD	R.T.
12.76	5.54 ng	256940	Phenanthrene-d10	11.29

Hit#	of	Tentative ID	MW	MolForm	CAS#	Qual
1	5	6-Amino-.beta.-carboline-3-carbo...	255	C14H13N3O2	078539-57-8	64
2		Silane, chlorotriethoxy-	198	C6H15ClO3Si	004667-99-6	60
3		9H-Thioxanthen-9-one, 2-(1-methy...	254	C16H14OS	005495-84-1	49
4		1,2,3,4-Tetrahydrobenzimidazo[2,...	239	C14H13N3O	024415-63-2	41
5		1-Propene, 1,2-bis(4-methoxyphen...	254	C17H18O2	020802-02-2	38



Data Path : Z:\HPCHEM1\BNA F\DATA\BF041117\  
 Data File : BF094367.D  
 Acq On : 11 Apr 2017 23:04  
 Operator : SJ/MA  
 Sample : I2625-02  
 Misc :  
 ALS Vial : 16 Sample Multiplier: 1

Instrument :  
 BNA\_F  
 ClientSampleId :  
 IM-TS-EME-08

Quant Method : Z:\HPCHEM1\BNA F\METHODS\8270-BF032217.M  
 Quant Title : ASP BNA STANDARDS FOR 5 POINT CALIBRATION

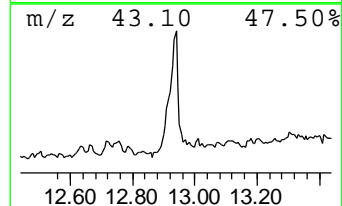
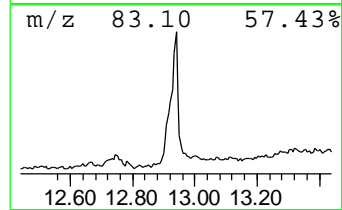
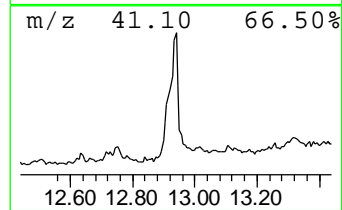
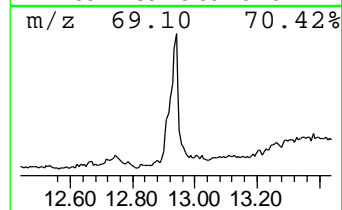
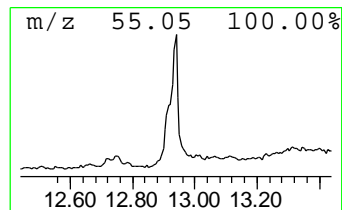
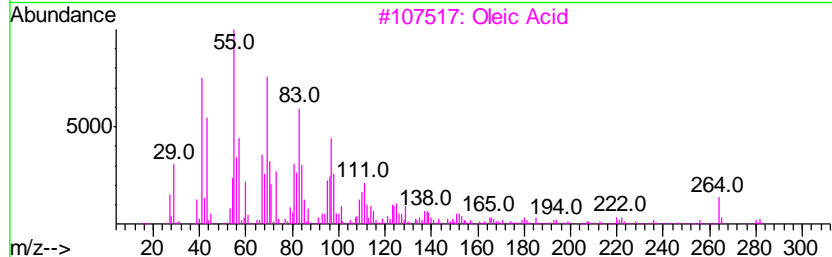
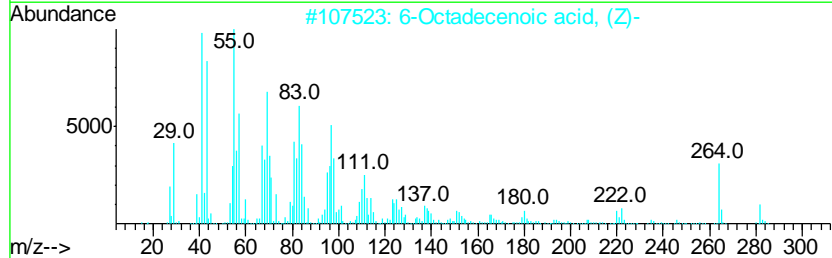
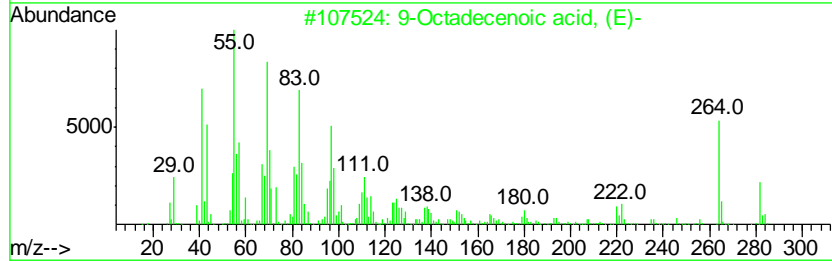
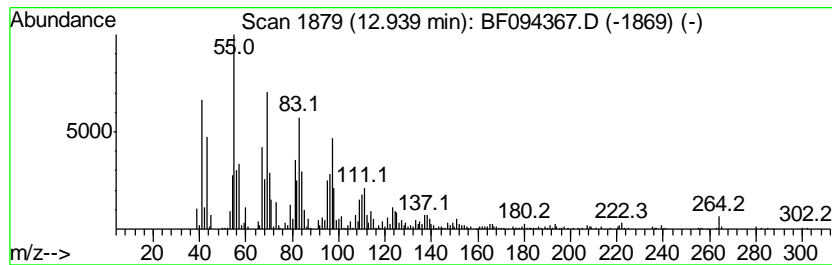
TIC Library : C:\DATABASE\NIST02.L  
 TIC Integration Parameters: LSCINT.P

\*\*\*\*\*  
 Peak Number 9 9-Octadecenoic acid, (E)- Concentration Rank 3

R.T.	EstConc	Area	Relative to ISTD	R.T.
12.94	35.36 ng	1417800	Chrysene-d12	14.55

Hit#	of	Tentative ID	MW	MolForm	CAS#	Qual
1	5	9-Octadecenoic acid, (E)-	282	C18H34O2	000112-79-8	94
2		6-Octadecenoic acid, (Z)-	282	C18H34O2	000593-39-5	91
3		Oleic Acid	282	C18H34O2	000112-80-1	89
4		15-Tetracosenoic acid, methyl es...	380	C25H48O2	002733-88-2	87
5		9-Octadecenoic acid (Z)-, 2,3-di...	356	C21H40O4	000111-03-5	81



Data Path : Z:\HPCHEM1\BNA F\DATA\BF041117\  
 Data File : BF094367.D  
 Acq On : 11 Apr 2017 23:04  
 Operator : SJ/MA  
 Sample : I2625-02  
 Misc :  
 ALS Vial : 16 Sample Multiplier: 1

Instrument :  
 BNA\_F  
 ClientSampleID :  
 IM-TS-EME-08

Quant Method : Z:\HPCHEM1\BNA F\METHODS\8270-BF032217.M  
 Quant Title : ASP BNA STANDARDS FOR 5 POINT CALIBRATION

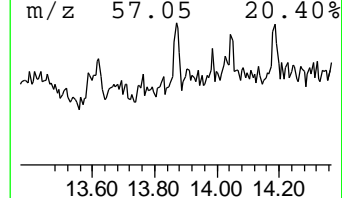
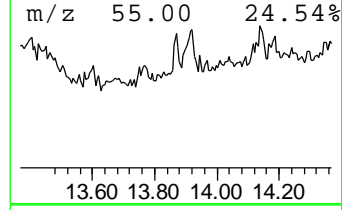
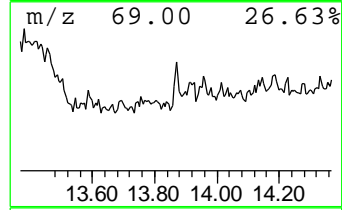
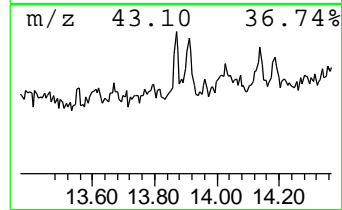
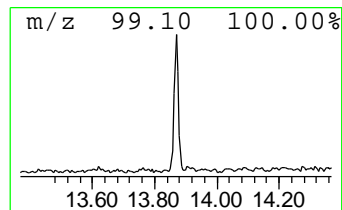
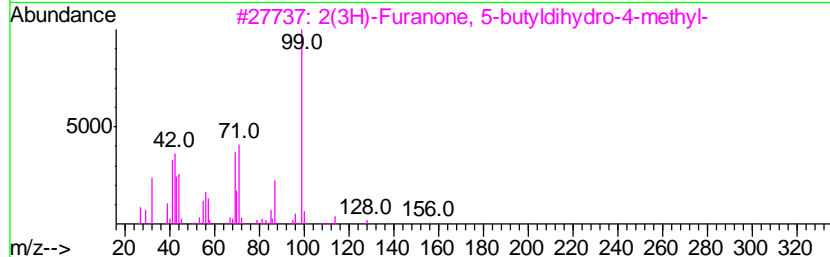
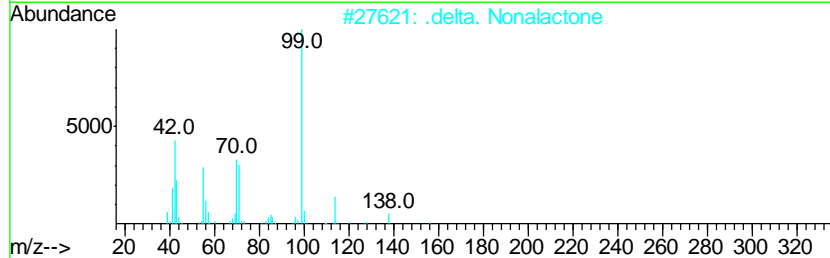
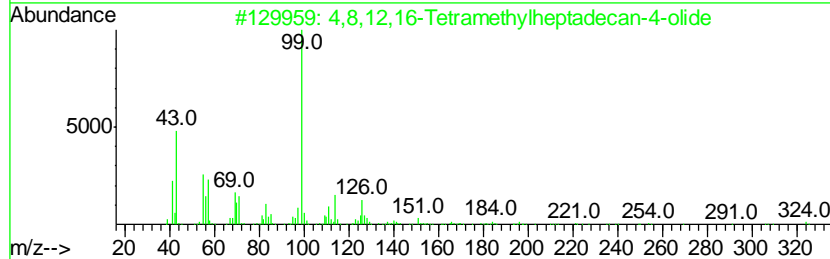
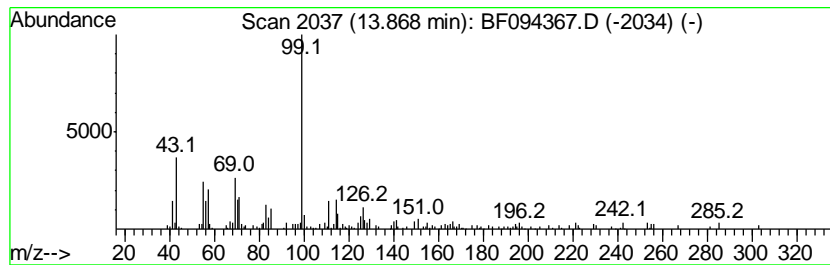
TIC Library : C:\DATABASE\NIST02.L  
 TIC Integration Parameters: LSCINT.P

\*\*\*\*\*  
 Peak Number 10 4,8,12,16-Tetramethylheptad... Concentration Rank 15

R.T.	EstConc	Area	Relative to ISTD	R.T.
13.87	2.33 ng	93310	Chrysene-d12	14.55

Hit#	of	Tentative ID	MW	MolForm	CAS#	Qual
1	5	4,8,12,16-Tetramethylheptadecan-...	324	C21H40O2	096168-15-9	72
2		.delta. Nonalactone	156	C9H16O2	003301-94-8	58
3		2(3H)-Furanone, 5-butyldihydro-4...	156	C9H16O2	039212-23-2	53
4		Tetrahydrofuran-2-one, 3-[2-pent...	168	C10H16O2	1000132-08-6	53
5		2(3H)-Furanone, 5-butyldihydro-4...	156	C9H16O2	055013-32-6	53



Data Path : Z:\HPCHEM1\BNA F\DATA\BF041117\  
 Data File : BF094367.D  
 Acq On : 11 Apr 2017 23:04  
 Operator : SJ/MA  
 Sample : I2625-02  
 Misc :  
 ALS Vial : 16 Sample Multiplier: 1

Instrument :  
 BNA\_F  
 ClientSampleId :  
 IM-TS-EME-08

Quant Method : Z:\HPCHEM1\BNA F\METHODS\8270-BF032217.M  
 Quant Title : ASP BNA STANDARDS FOR 5 POINT CALIBRATION

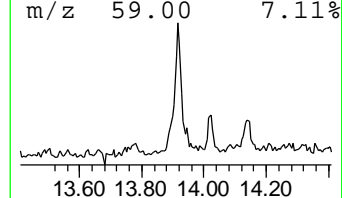
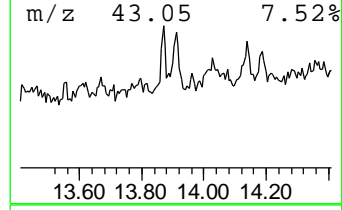
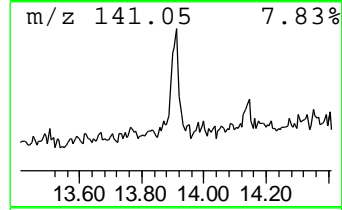
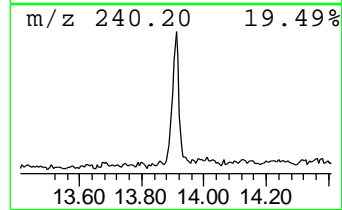
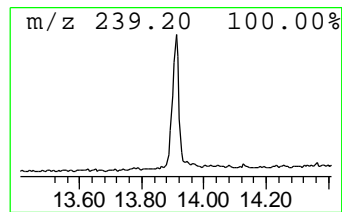
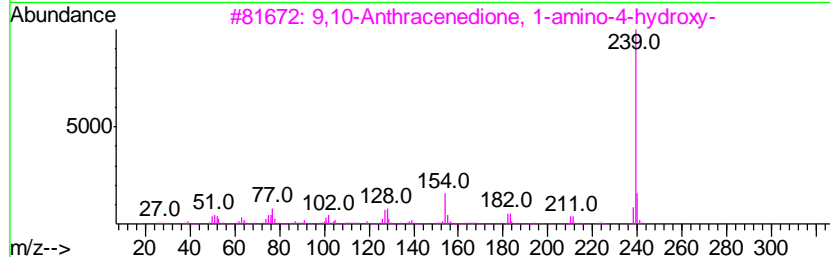
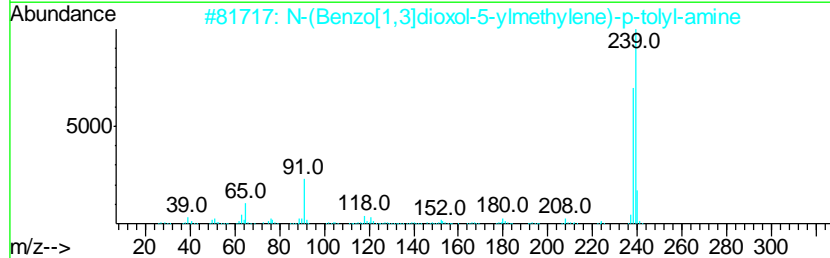
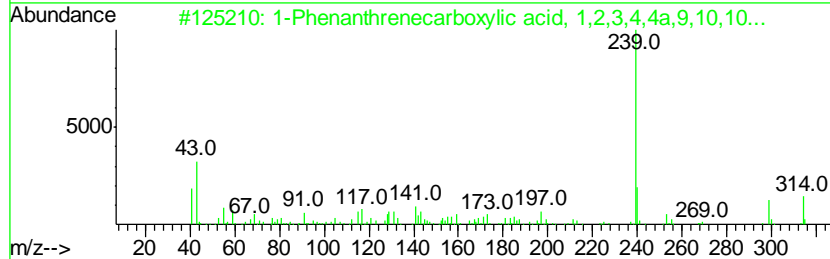
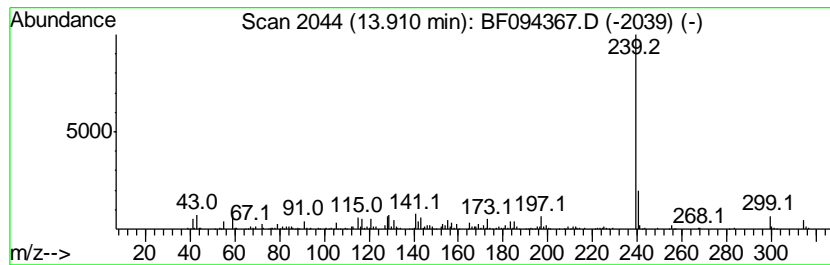
TIC Library : C:\DATABASE\NIST02.L  
 TIC Integration Parameters: LSCINT.P

\*\*\*\*\*  
 Peak Number 11 1-Phenanthrenecarboxylic ac... Concentration Rank 5

R.T.	EstConc	Area	Relative to ISTD	R.T.
13.91	8.88 ng	356061	Chrysene-d12	14.55

Hit#	of	Tentative ID	MW	MolForm	CAS#	Qual
1	5	1-Phenanthrenecarboxylic acid, 1...	314	C21H30O2	001235-74-1	89
2		N-(Benzo[1,3]dioxol-5-ylmethylen...	239	C15H13NO2	007402-58-6	59
3		9,10-Anthracenedione, 1-amino-4-...	239	C14H9NO3	000116-85-8	45
4		4-(4-Oxo-1,2,3,4,6,7,12,12b-octa...	326	C19H22N2O3	1000137-91-1	45
5		Indole, 3-imidazolo[2,1-b]thiazoo...	239	C13H9N3S	292855-05-1	45



Data Path : Z:\HPCHEM1\BNA F\DATA\BF041117\  
 Data File : BF094367.D  
 Acq On : 11 Apr 2017 23:04  
 Operator : SJ/MA  
 Sample : I2625-02  
 Misc :  
 ALS Vial : 16 Sample Multiplier: 1

Instrument :  
 BNA\_F  
 ClientSampled :  
 IM-TS-EME-08

Quant Method : Z:\HPCHEM1\BNA F\METHODS\8270-BF032217.M  
 Quant Title : ASP BNA STANDARDS FOR 5 POINT CALIBRATION

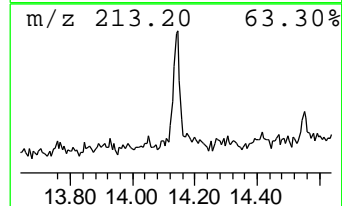
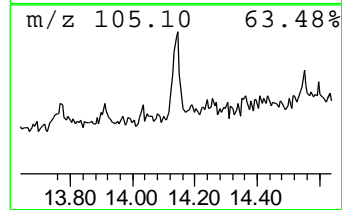
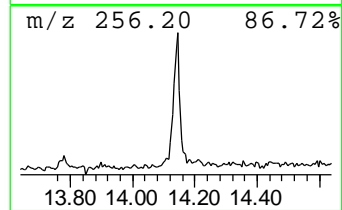
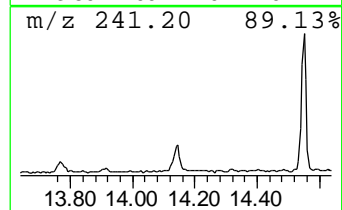
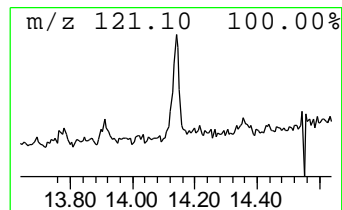
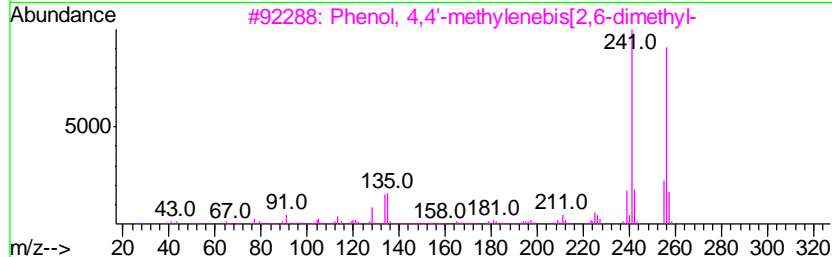
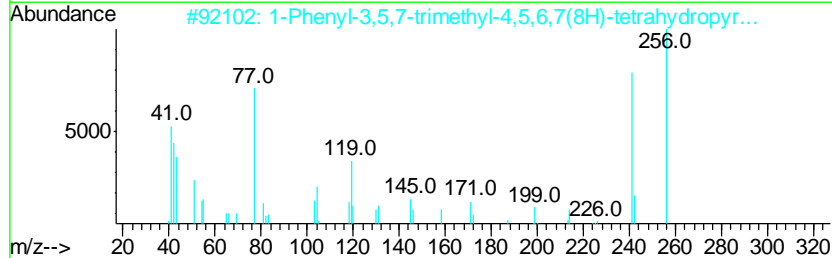
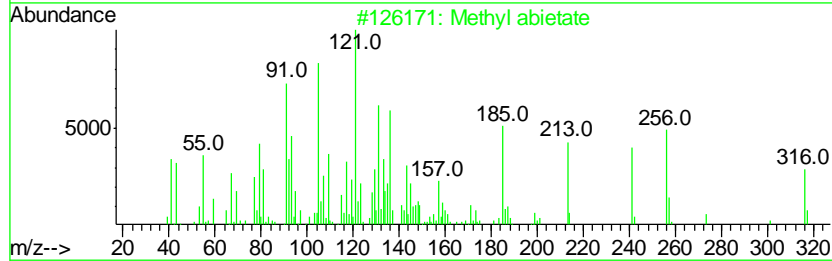
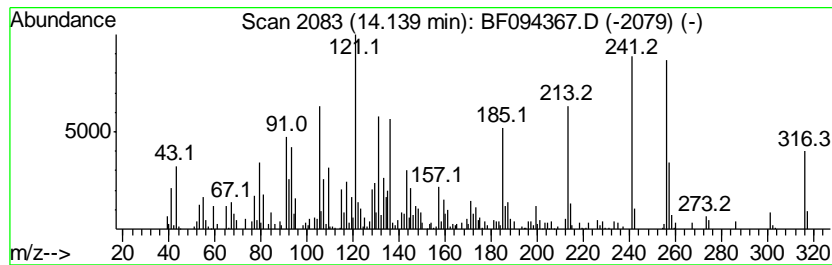
TIC Library : C:\DATABASE\NIST02.L  
 TIC Integration Parameters: LSCINT.P

\*\*\*\*\*  
 Peak Number 12 Methyl abietate Concentration Rank 7

R.T.	EstConc	Area	Relative to ISTD	R.T.
14.14	6.47 ng	259580	Chrysene-d12	14.55

Hit#	of	Tentative ID	MW	MolForm	CAS#	Qual
1	5	Methyl abietate	316	C21H32O2	000127-25-3	99
2		1-Phenyl-3,5,7-trimethyl-4,5,6,7...	256	C15H20N4	064899-25-8	35
3		Phenol, 4,4'-methylenebis[2,6-di...	256	C17H20O2	005384-21-4	30
4		3,4-Dihydro-3,3-dimethyl-1,9(2H,...	241	C15H15NO2	1000212-95-2	25
5		1H-Pyrrole, 3-ethyl-5-[(4-ethyl-...	256	C17H24N2	002407-83-2	22



Data Path : Z:\HPCHEM1\BNA F\DATA\BF041117\  
 Data File : BF094367.D  
 Acq On : 11 Apr 2017 23:04  
 Operator : SJ/MA  
 Sample : I2625-02  
 Misc :  
 ALS Vial : 16 Sample Multiplier: 1

Instrument :  
 BNA\_F  
 ClientSampleId :  
 IM-TS-EME-08

Quant Method : Z:\HPCHEM1\BNA F\METHODS\8270-BF032217.M  
 Quant Title : ASP BNA STANDARDS FOR 5 POINT CALIBRATION

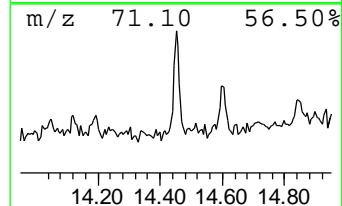
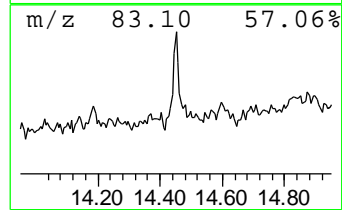
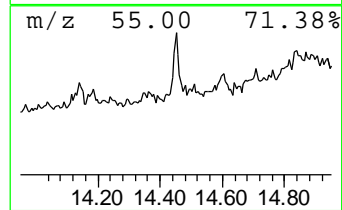
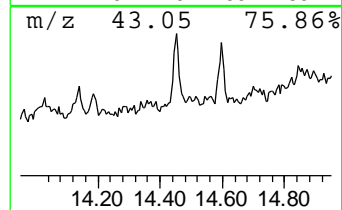
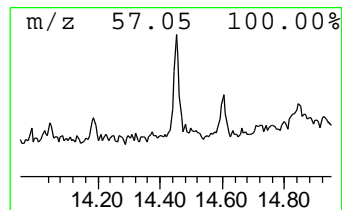
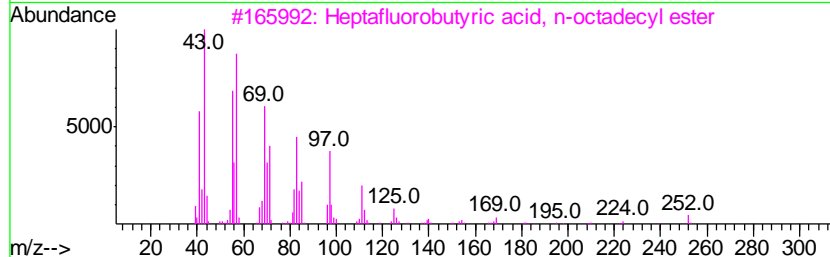
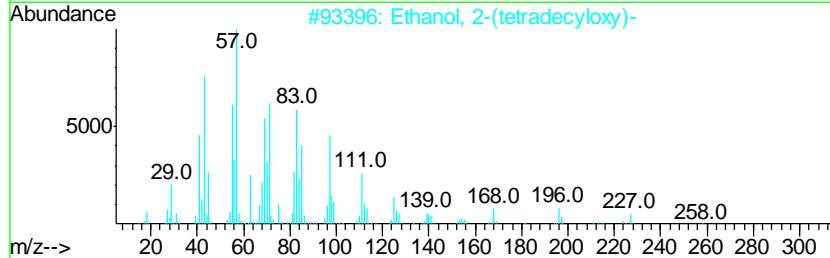
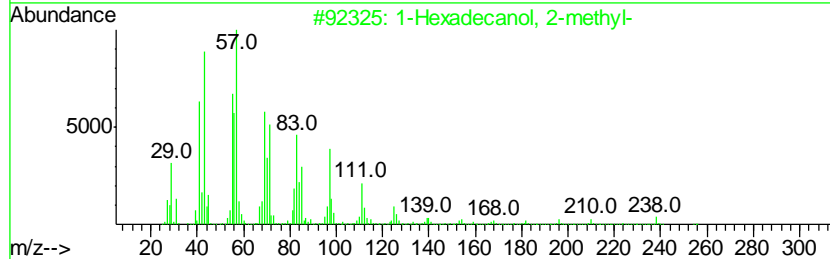
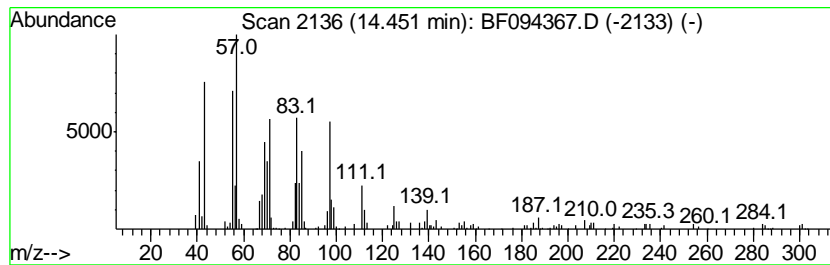
TIC Library : C:\DATABASE\NIST02.L  
 TIC Integration Parameters: LSCINT.P

\*\*\*\*\*  
 Peak Number 13 1-Hexadecanol, 2-methyl- Concentration Rank 13

R.T.	EstConc	Area	Relative to ISTD	R.T.
14.45	2.91 ng	116783	Chrysene-d12	14.55

Hit#	of	Tentative ID	MW	MolForm	CAS#	Qual
1	5	1-Hexadecanol, 2-methyl-	256	C17H36O	002490-48-4	91
2		Ethanol, 2-(tetradecyloxy)-	258	C16H34O2	002136-70-1	91
3		Heptafluorobutyric acid, n-octad...	466	C22H37F7O2	000400-57-7	80
4		Cyclopentadecane	210	C15H30	000295-48-7	78
5		13-Tetradecen-1-ol acetate	254	C16H30O2	056221-91-1	78



Data Path : Z:\HPCHEM1\BNA F\DATA\BF041117\  
 Data File : BF094367.D  
 Acq On : 11 Apr 2017 23:04  
 Operator : SJ/MA  
 Sample : I2625-02  
 Misc :  
 ALS Vial : 16 Sample Multiplier: 1

Instrument :  
 BNA\_F  
 ClientSampleID :  
 IM-TS-EME-08

Quant Method : Z:\HPCHEM1\BNA F\METHODS\8270-BF032217.M  
 Quant Title : ASP BNA STANDARDS FOR 5 POINT CALIBRATION

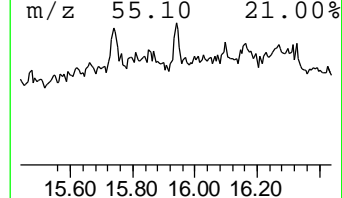
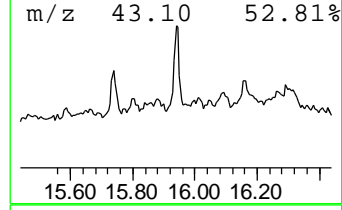
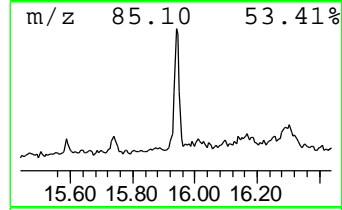
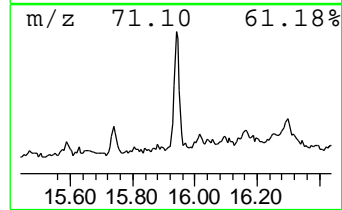
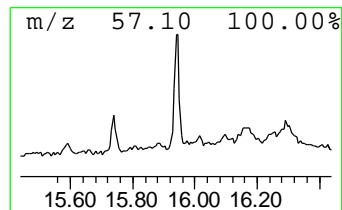
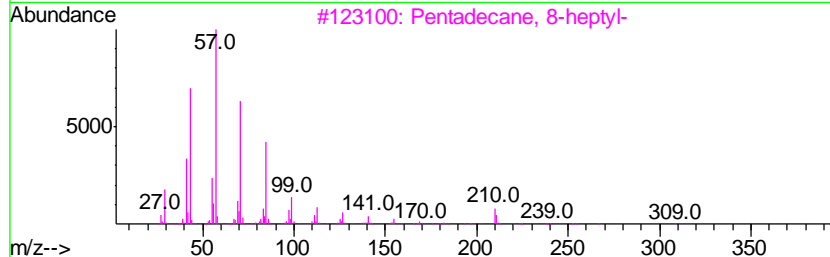
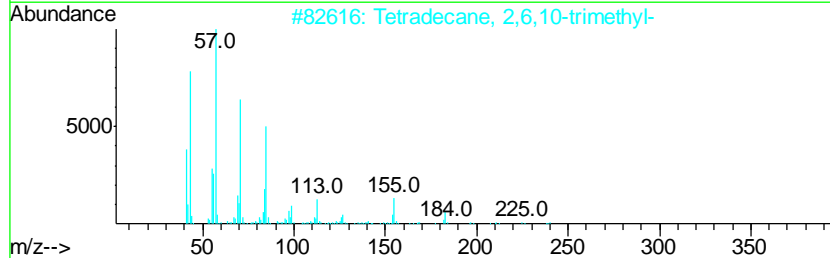
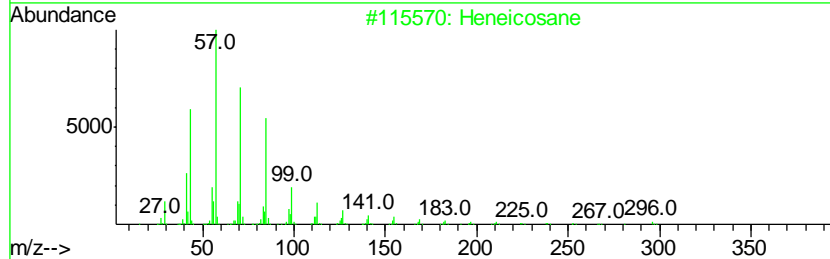
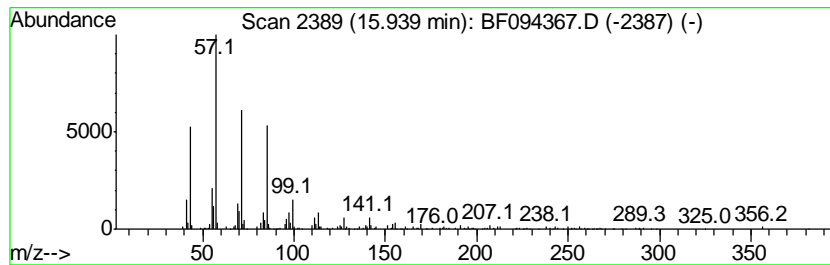
TIC Library : C:\DATABASE\NIST02.L  
 TIC Integration Parameters: LSCINT.P

\*\*\*\*\*  
 Peak Number 14 Heneicosane Concentration Rank 11

R.T.	EstConc	Area	Relative to ISTD	R.T.
15.94	4.68 ng	182025	Perylene-d12	16.18

Hit#	of	Tentative ID	MW	MolForm	CAS#	Qual
1	5	Heneicosane	296	C21H44	000629-94-7	90
2		Tetradecane, 2,6,10-trimethyl-	240	C17H36	014905-56-7	90
3		Pentadecane, 8-heptyl-	310	C22H46	071005-15-7	87
4		Decane, 3,8-dimethyl-	170	C12H26	017312-55-9	87
5		Octadecane	254	C18H38	000593-45-3	86





Data Path : Z:\HPCHEM1\BNA F\DATA\BF041117\  
 Data File : BF094367.D  
 Acq On : 11 Apr 2017 23:04  
 Operator : SJ/MA  
 Sample : I2625-02  
 Misc :  
 ALS Vial : 16 Sample Multiplier: 1

Instrument :  
 BNA\_F  
 ClientSampleID :  
 IM-TS-EME-08

Quant Method : Z:\HPCHEM1\BNA F\METHODS\8270-BF032217.M  
 Quant Title : ASP BNA STANDARDS FOR 5 POINT CALIBRATION

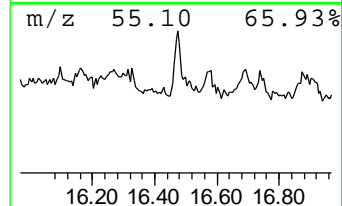
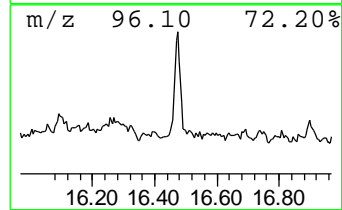
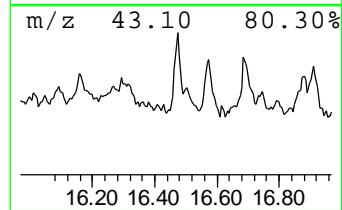
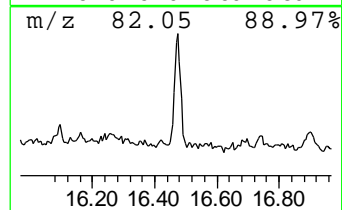
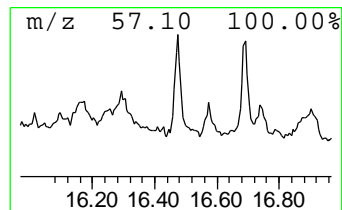
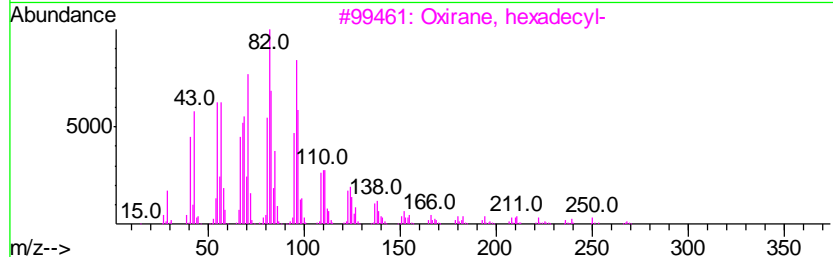
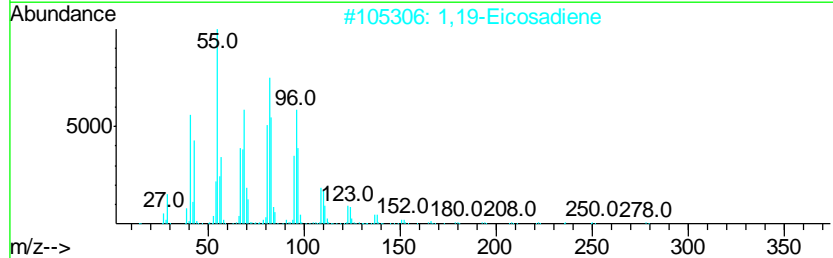
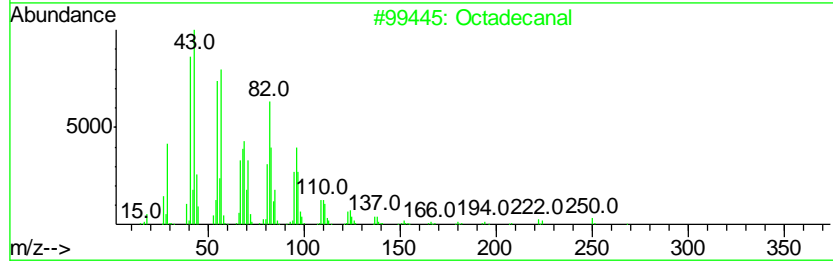
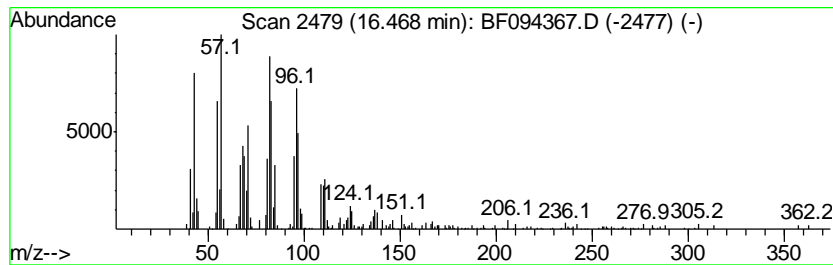
TIC Library : C:\DATABASE\NIST02.L  
 TIC Integration Parameters: LSCINT.P

\*\*\*\*\*  
 Peak Number 15 Octadecanal Concentration Rank 9

R.T.	EstConc	Area	Relative to ISTD	R.T.
16.47	5.99 ng	233004	Perylene-d12	16.18

Hit#	of	Tentative ID	MW	MolForm	CAS#	Qual
1	5	Octadecanal	268	C18H36O	000638-66-4	90
2		1,19-Eicosadiene	278	C20H38	014811-95-1	72
3		Oxirane, hexadecyl-	268	C18H36O	007390-81-0	72
4		Cyclododecanol	184	C12H24O	001724-39-6	70
5		Oxirane, heptadecyl-	282	C19H38O	067860-04-2	59



Data Path : Z:\HPCHEM1\BNA F\DATA\BF041117\  
 Data File : BF094367.D  
 Acq On : 11 Apr 2017 23:04  
 Operator : SJ/MA  
 Sample : I2625-02  
 Misc :  
 ALS Vial : 16 Sample Multiplier: 1

Instrument :  
 BNA\_F  
 ClientSampleID :  
 IM-TS-EME-08

Quant Method : Z:\HPCHEM1\BNA F\METHODS\8270-BF032217.M  
 Quant Title : ASP BNA STANDARDS FOR 5 POINT CALIBRATION

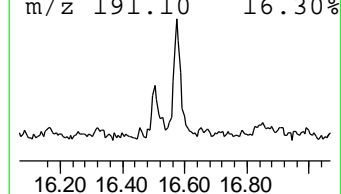
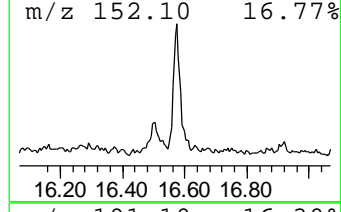
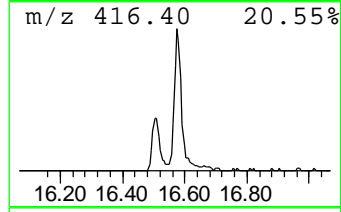
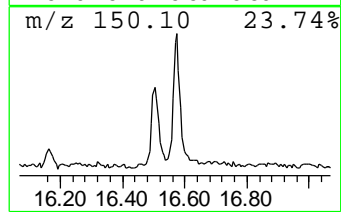
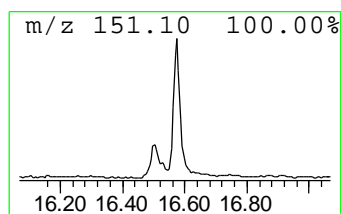
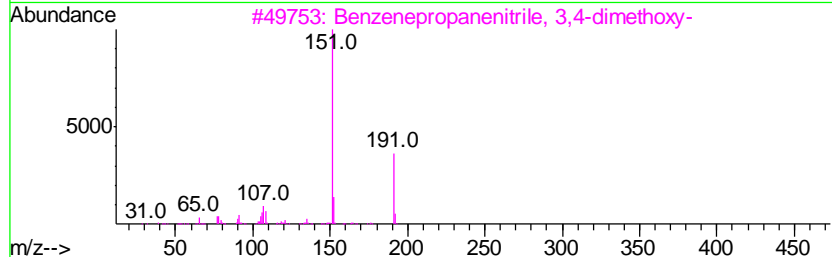
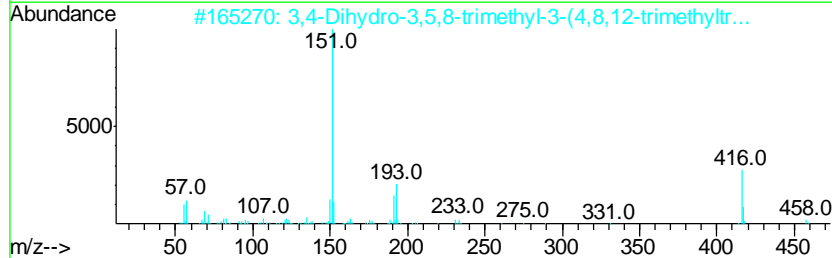
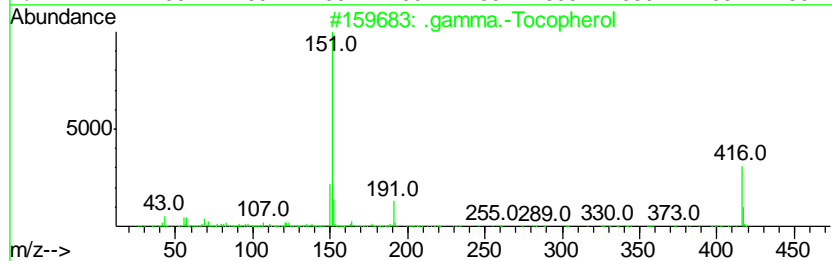
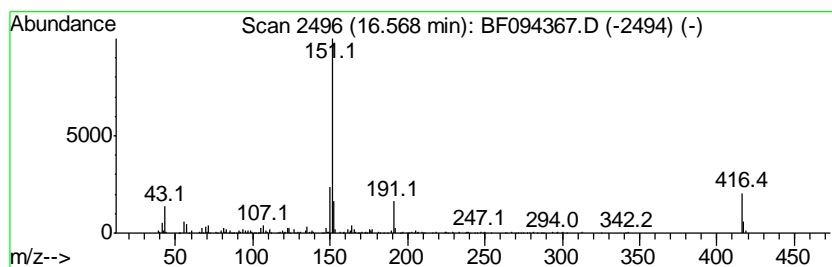
TIC Library : C:\DATABASE\NIST02.L  
 TIC Integration Parameters: LSCINT.P

\*\*\*\*\*  
 Peak Number 16 .gamma.-Tocopherol Concentration Rank 4

R.T.	EstConc	Area	Relative to ISTD	R.T.
16.57	11.51 ng	447493	Perylene-d12	16.18

Hit#	of	Tentative ID	MW	MolForm	CAS#	Qual
1	5	.gamma.-Tocopherol	416	C28H48O2	007616-22-0	97
2		3,4-Dihydro-3,5,8-trimethyl-3-(4...	458	C30H50O3	1000105-71-9	72
3		Benzenepropanenitrile, 3,4-dimet...	191	C11H13NO2	049621-56-9	58
4		Silane, 2-butenylmethoxymethylph...	206	C12H18OSi	076557-76-1	38
5		3-Hydroxy-7-methoxy-3-phenyl-4-c...	270	C16H14O4	018380-57-9	38



Data Path : Z:\HPCHEM1\BNA\_F\DATA\BF041117\  
 Data File : BF094367.D  
 Acq On : 11 Apr 2017 23:04  
 Operator : SJ/MA  
 Sample : I2625-02  
 Misc :  
 ALS Vial : 16 Sample Multiplier: 1

Instrument :  
 BNA\_F  
 ClientSampleId :  
 IM-TS-EME-08

Quant Method : Z:\HPCHEM1\BNA\_F\METHODS\8270-BF032217.M  
 Quant Title : ASP BNA STANDARDS FOR 5 POINT CALIBRATION

TIC Library : C:\DATABASE\NIST02.L  
 TIC Integration Parameters: LSCINT.P

TIC Top Hit name	RT	EstConc	Units	Response	--Internal Standard--			
					#	RT	Resp	Conc
2-Pentanone, 4-hy...	3.97	7.8	ng	305364	1	5.83	787058	20.0
unknown5.59	5.59	80.3	ng	3158890	1	5.83	787058	20.0
Heptadecane, 2,6,...	10.65	2.0	ng	93892	4	11.29	927431	20.0
2-Pentadecanone, ...	11.43	2.5	ng	117004	4	11.29	927431	20.0
n-Hexadecanoic acid	12.03	6.2	ng	286948	4	11.29	927431	20.0
unknown12.63	12.63	3.1	ng	144297	4	11.29	927431	20.0
6-Amino-.beta.-ca...	12.76	5.5	ng	256940	4	11.29	927431	20.0
9-Octadecenoic ac...	12.94	35.4	ng	1417800	5	14.55	801835	20.0
4,8,12,16-Tetrame...	13.87	2.3	ng	93310	5	14.55	801835	20.0
1-Phenanthrenecar...	13.91	8.9	ng	356061	5	14.55	801835	20.0
Methyl abietate	14.14	6.5	ng	259580	5	14.55	801835	20.0
1-Hexadecanol, 2-...	14.45	2.9	ng	116783	5	14.55	801835	20.0
Heneicosane	15.94	4.7	ng	182025	6	16.18	777500	20.0
Octadecanal	16.47	6.0	ng	233004	6	16.18	777500	20.0
.gamma.-Tocopherol	16.57	11.5	ng	447493	6	16.18	777500	20.0